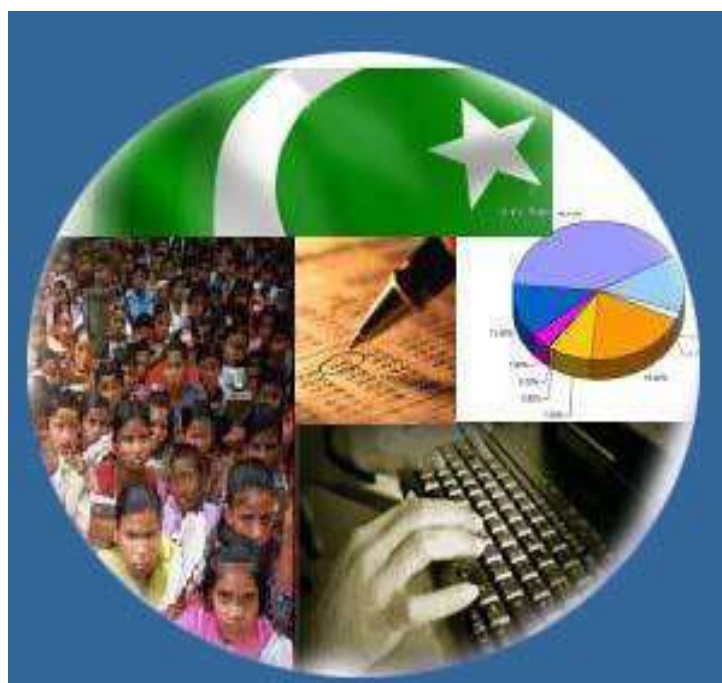




Monthly Review on Price Indices



March, 2022
(Base Year 2015-16)

Government of Pakistan
Ministry of Planning, Development & Special Initiatives
Pakistan Bureau of Statistics
Islamabad

PRICE STATISTICS TEAM

S#	Name	Designation
1.	Dr. Naeem Uz Zafar	Chief Statistician
2.	Syed Ejaz Wasti	Member (National Accounts/Prices)
3.	Dr. Bahrawar Jan	Deputy Director General
4.	Mr. Naseer Ahmad	Director
5.	Dr. Ahtasham Gul	Chief Statistical Officer
6.	Mr. Tauseef ul Hassan Hai	Assistant Census Commissioner
7.	Mr. Adnan Shams	Statistical Officer
8.	Mr. Muhammad Mazhar	Statistical Officer
7.	Mr. Umar Farooq	Statistical Assistant
8.	Mrs. Madiha Gulfraz	Statistical Assistant
9.	Mrs. Humail Fatima	Statistical Assistant
10	Sheikh Muhammad Umar Farooq	Statistical Assistant
11.	Mr. Ansar Mahmood	Statistical Assistant

IT & SOFTWARE TEAM

1.	Mrs. Sobia Munawar	Director (DP)
2.	Mr. Muhammad Ehtesham	Director (DP)
3.	Mr. Raja Aurangzeb	Data Processing Assistant
4.	Mr. Muhammad Kibria	Data Processing Assistant
5.	Mr. Muhammad Irfan Bajwa	Data Processing Assistant

Inflation in Brief

- CPI inflation General**, increased by 12.7% on year-on-year basis in March 2022 as compared to an increase of 12.2% in the previous month and 9.1% in March 2021. On month-on-month basis, it increased by 0.8% in March 2022 as compared to increase of 1.2% in the previous month and increase of 0.4% in March 2021.
- CPI inflation Urban**, increased by 11.9% on year-on-year basis in March 2022 as compared to an increase of 11.5% in the previous month and 8.7% in March 2021. On month-on-month basis, it increased by 0.7% in March 2022 as compared to increase of 0.9% in the previous month and increase of 0.3% in March 2021.
- CPI inflation Rural**, increased by 13.9% on year-on-year basis in March 2022 as compared to an increase of 13.3% in the previous month and 9.5% in March 2021. On month-on-month basis, it increased by 1.0% in March 2022 as compared to increase of 1.5% in the previous month and increase of 0.5% in March 2021.
- SPI inflation** on YoY increased by 13.0% in March 2022 as compared to an increase of 18.7% a month earlier and an increase of 18.7% in March 2021. On MoM basis, it increased by 0.6% in March 2022 as compared to increase of 1.3% a month earlier and increase of 5.7% in March 2021.
- WPI inflation** on YoY basis increased by 23.8% in March 2022 as compared to an increase of 23.6% a month earlier and an increase of 14.6% in March 2021. WPI inflation on MoM basis increased by 3.9% in March 2022 as compared to increase of 1.9% a month earlier and an increase of 3.7% in corresponding month i.e. March 2021.
- Figures 1 and 2 show graphically the yearly data of Table 1.a for Urban and Rural CPI while Table 1.1 shows "Period Average" and "YoY" percent changes in indices of three years.

Table 1.a General Inflation (%) (Base 2015-16)																		
PERIOD	CPI														SPI**		WPI	
	General						Food				Non-Food							
	National		Urban		Rural		Urban		Rural		Urban		Rural		YoY	MoM	YoY	MoM
	YoY	MoM	YoY	MoM	YoY	MoM	YoY	MoM	YoY	MoM	YoY	MoM	YoY	MoM				
May-20	8.2	0.3	7.3	0.3	9.7	0.3	10.6	1.5	13.7	1.4	5.4	-0.4	6.4	-0.5	11.0	2.2	1.5	-2.1
Jun-20	8.6	0.8	7.6	0.7	10.0	1.0	12.9	1.8	15.2	2.0	4.7	0.0	5.8	0.1	11.5	1.4	0.9	-0.3
Jul-20	9.3	2.5	7.8	2.2	11.6	3.0	15.1	3.0	17.8	4.0	3.9	1.7	6.5	2.2	13.7	3.0	3.2	5.4
Aug-20	8.2	0.6	7.1	0.8	9.9	0.4	11.3	-0.3	13.5	-0.9	4.8	1.5	6.8	1.5	11.7	0.9	3.3	1.3
Sep-20	9.0	1.5	7.7	1.3	11.1	2.0	12.4	3.0	15.8	3.8	5.0	0.2	7.2	0.3	12.0	2.1	4.3	1.0
Oct-20	8.9	1.7	7.3	1.3	11.3	2.4	13.9	2.8	17.7	4.3	3.6	0.3	5.8	0.5	12.3	3.0	5.1	2.9
Nov-20	8.3	0.8	7.0	0.6	10.5	1.1	13.0	1.6	16.1	2.0	3.4	0.1	5.5	0.2	9.9	1.1	5.0	-0.9
Dec-20	8.0	-0.7	7.0	-0.3	9.5	-1.2	12.6	-2.1	13.4	-3.4	3.8	0.7	6.1	1.0	9.1	-2.7	5.7	0.3
Jan-21	5.7	-0.2	5.0	-0.2	6.6	-0.3	7.3	-2.1	7.2	-2.2	3.7	1.1	6.1	1.5	7.7	-0.8	6.4	2.5
Feb-21	8.7	1.8	8.6	2.3	8.8	1.1	10.3	1.3	9.1	0.2	7.6	2.8	8.6	2.0	11.9	3.1	9.5	2.2
Mar-21	9.1	0.4	8.7	0.3	9.5	0.5	11.5	1.7	11.1	1.5	7.1	-0.6	8.1	-0.4	18.7	5.7	14.6	3.7
Apr-21	11.1	1.0	11.0	1.3	11.3	0.6	15.7	2.7	14.1	0.9	8.2	0.5	8.9	0.3	21.3	0.4	16.6	-0.4
May-21	10.9	0.1	10.8	0.2	10.9	-0.03	15.3	1.1	12.8	0.2	8.3	-0.3	9.2	-0.3	19.7	0.8	19.4	0.3
Jun-21	9.7	-0.3	9.6	-0.4	9.7	-0.1	11.0	-1.9	9.8	-0.8	8.8	0.5	9.7	0.6	17.6	-0.4	20.9	0.9
Jul-21	8.4	1.3	8.7	1.29	8.0	1.4	9.4	1.5	7.3	1.6	8.2	1.1	8.7	1.2	16.2	1.8	17.3	2.3
Aug-21	8.4	0.6	8.3	0.5	8.4	0.7	10.2	0.5	9.1	0.8	7.2	0.5	7.7	0.6	15.9	0.7	17.1	1.2
Sep-21	9.0	2.1	9.1	2.0	8.8	2.3	10.8	3.6	9.1	3.7	8.1	1.1	8.5	1.0	16.6	2.7	19.6	3.2
Oct-21	9.2	1.9	9.6	1.7	8.7	2.2	9.4	1.5	7.2	2.6	9.7	1.8	10.0	1.9	15.2	2.1	21.2	4.2
Nov-21	11.5	3.0	12.0	2.9	10.9	3.1	11.9	3.9	8.6	3.3	12.0	2.2	13.0	3.0	18.1	3.6	27.0	3.8
Dec-21	12.3	-0.02	12.7	0.3	11.6	-0.5	11.7	-2.3	9.0	-3.1	13.4	2.0	14.0	1.9	20.9	-0.4	26.2	-0.2
Jan-22	13.0	0.4	13.0	0.1	12.9	0.9	13.3	-0.8	11.8	0.4	12.8	0.6	13.9	1.4	20.9	-0.8	24.0	0.6
Feb-22	12.2	1.2	11.5	0.9	13.3	1.5	14.3	2.2	14.6	2.6	9.9	0.2	12.2	0.4	18.7	1.3	23.6	1.9
Mar-22	12.7	0.8	11.9	0.7	13.9	1.0	14.5	1.8	15.5	2.3	10.4	-0.1	12.5	-0.2	13.0	0.6	23.8	3.9

** SPI for quintile 1. Digits 0.0* are due to rounding off.

Core inflation (NFNE)

7. Measured by **non-food non-energy Urban** increased by 8.9% on (YoY) basis in March, 2022 as compared to an increase of 7.8% in the previous month and 6.3% in March, 2021. On (MoM) basis, it increased by 1.2% in March, 2022 as compared to increase of 0.8% in previous month, and an increase of 0.2% in corresponding month of last year i.e. March, 2021.
8. Measured by **non-food non-energy Rural** increased by 10.3% on (YoY) basis in March, 2022 as compared to an increase of 9.4% in the previous month and 7.3% in March, 2021. On (MoM) basis, it increased by 1.1% in March, 2022 as compared to an increase of 0.9% in previous month, and an increase of 0.3% in corresponding month of last year i.e. March, 2021.

Core inflation (Trimmed)

9. Measured by 20% **weighted trimmed mean Urban** increased by 10.5% on (YoY) basis in March, 2022 as compared to 9.8% in the previous month and 8.1% in March, 2021. On (MoM) basis, it increased by 0.8% in March, 2022 as compared to an increase of 0.8% in the previous month and an increase of 0.4% in corresponding month of last year i.e. March, 2021.
10. Measured by 20% **weighted trimmed mean Rural** increased by 11.7% on (YoY) basis in March, 2022 as compared to 11.3% in the previous month and by 9.4% in March, 2021. On (MoM) basis, it increased by 0.8% in March, 2022 as compared to an increase of 1.2% in the previous month and an increase of 0.3% in corresponding month of last year i.e. March, 2021.

Table 1.b Core Inflation (%) (Base 2015-16)

Period	NFNE				Trimmed			
	Urban		Rural		Urban		Rural	
	YoY	MoM	YoY	MoM	YoY	MoM	YoY	MoM
Mar-21	6.3	0.2	7.3	0.3	8.1	0.4	9.4	0.3
Apr-21	7.0	0.9	7.7	0.7	9.8	0.6	10.6	0.2
May-21	6.8	0.2	7.6	0.3	10.0	0.2	10.3	0.4
Jun-21	6.7	0.3	7.3	0.4	9.4	0.3	9.8	0.6
Jul-21	6.9	0.8	6.9	0.7	9.0	0.8	8.4	0.8
Aug-21	6.3	0.2	6.2	0.2	7.8	0.4	7.8	0.6
Sep-21	6.4	0.4	6.2	0.5	8.7	0.9	8.2	1.2
Oct-21	6.7	0.9	6.7	1.0	8.7	1.1	8.2	1.6
Nov-21	7.6	1.1	8.2	1.8	9.8	1.7	9.5	2.2
Dec-21	8.3	1.1	8.9	1.1	10.8	1.1	10.3	1.0
Jan-22	8.2	0.8	9.0	1.2	10.6	0.5	10.9	1.1
Feb-22	7.8	0.8	9.4	0.9	9.8	0.8	11.3	1.2
Mar-22	8.9	1.2	10.3	1.1	10.5	0.8	11.7	0.8

Table 1.1 Period Average and Y-o-Y % Change

INDEX	Average July- March % changes			March over March % changes		
	2021-2022	2020-2021	2019-2020	2021-2022	2020-2021	2019-2020
CPI (National)	10.77	8.34	11.53	12.72	9.05	10.24
CPI (Urban)	10.78	7.36	11.08	11.94	8.75	9.31
CPI (Rural)	10.75	9.83	12.23	13.88	9.51	11.67
SPI	17.26	11.91	14.85	13.02	18.70	11.78
WPI	22.27	6.35	13.00	23.78	14.59	9.26

Figure 1: Urban Inflation - YoY, Special Indices

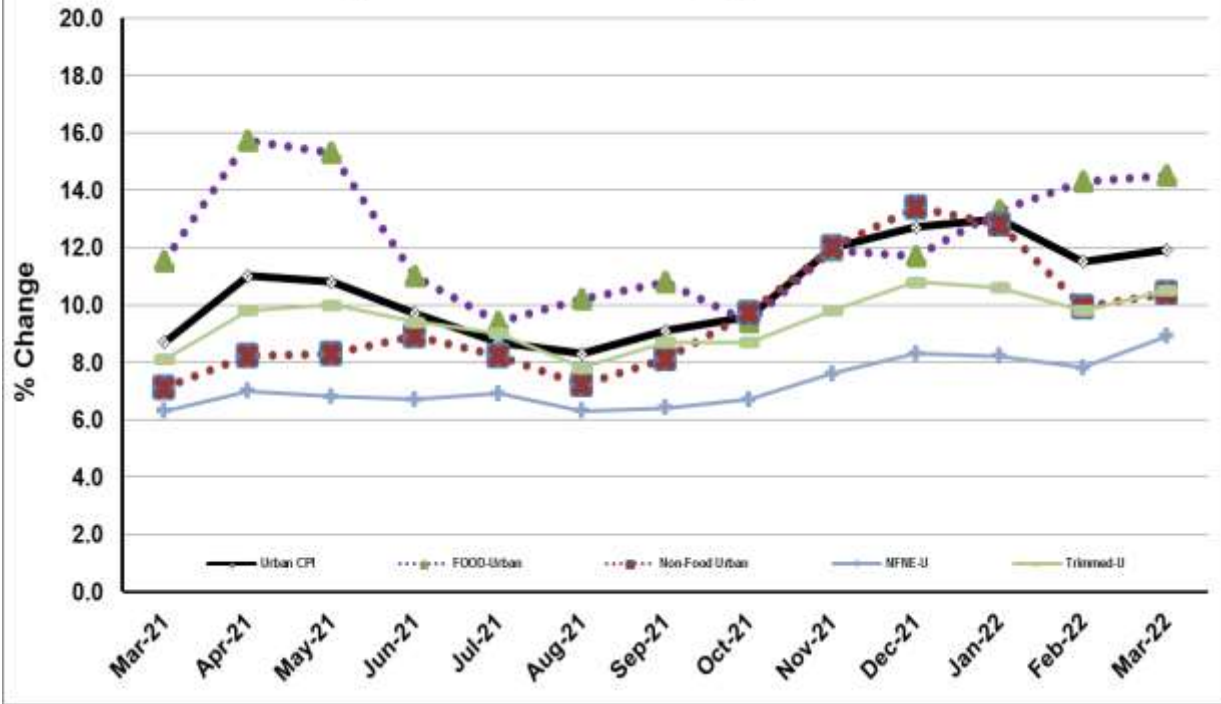


Figure 2: Rural Inflation - YoY, Special Indices

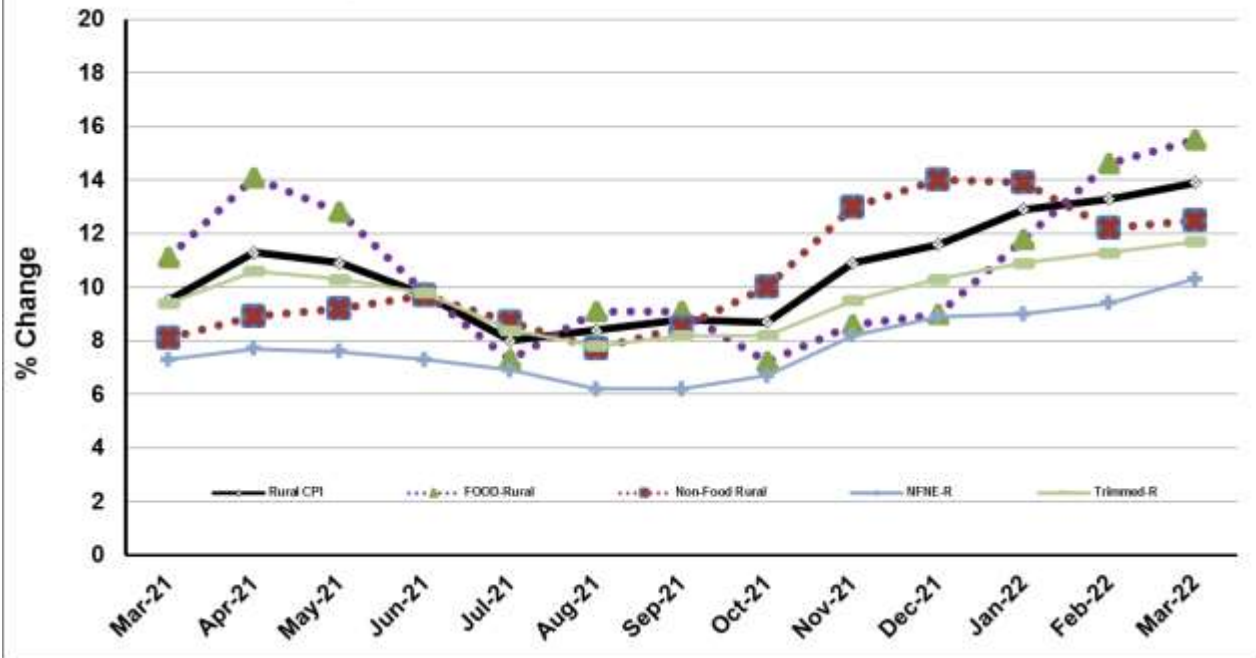


Figure 3: UCPI Inflation MoM, Special Indices

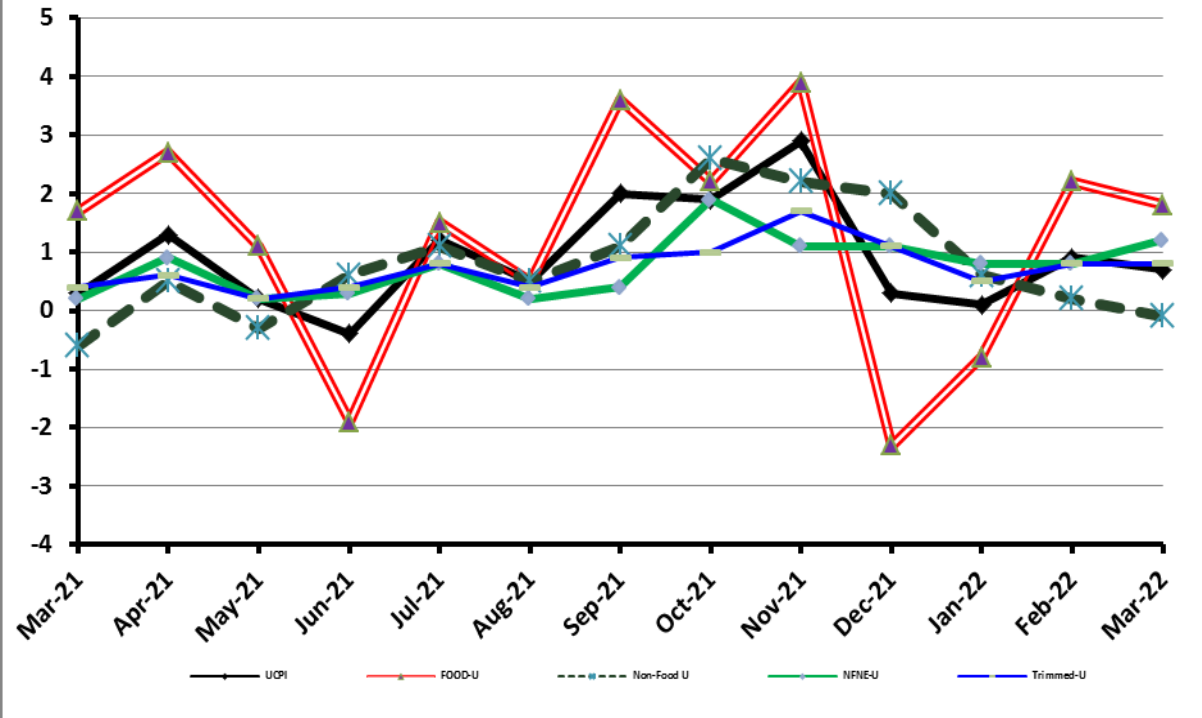


Figure 4: RPI Inflation MoM, Special Indices

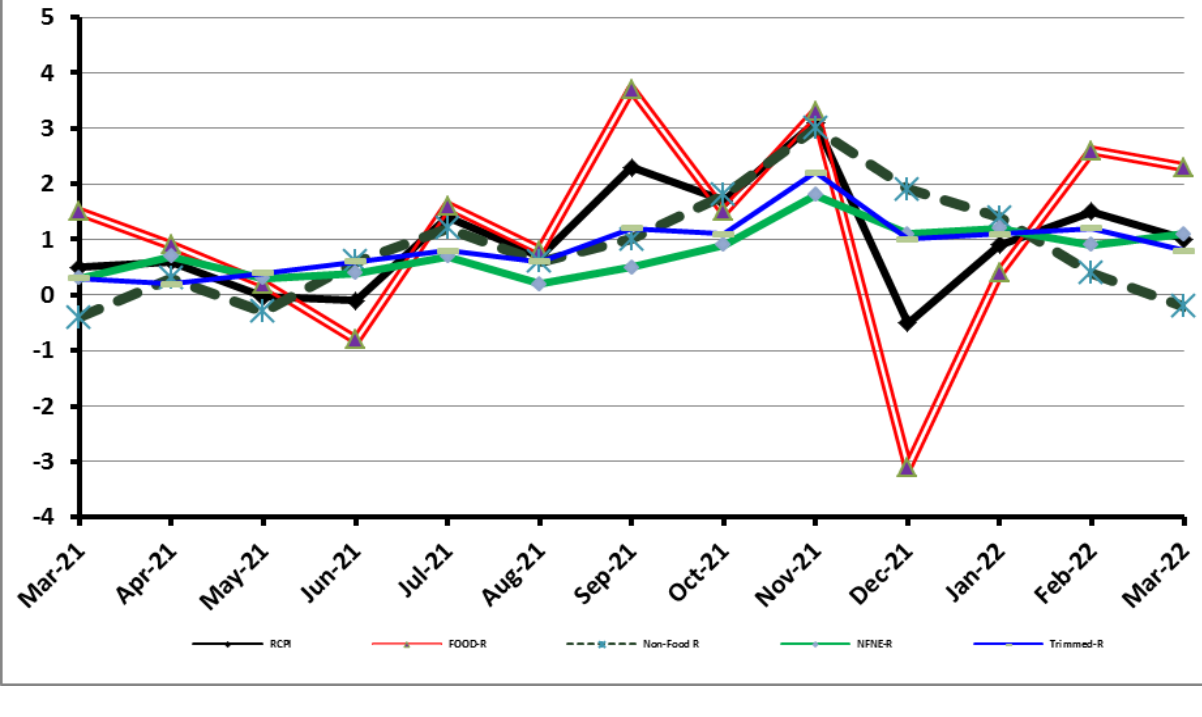


Figure 5: CPI Y.o.Y (National, Urban, Rural)

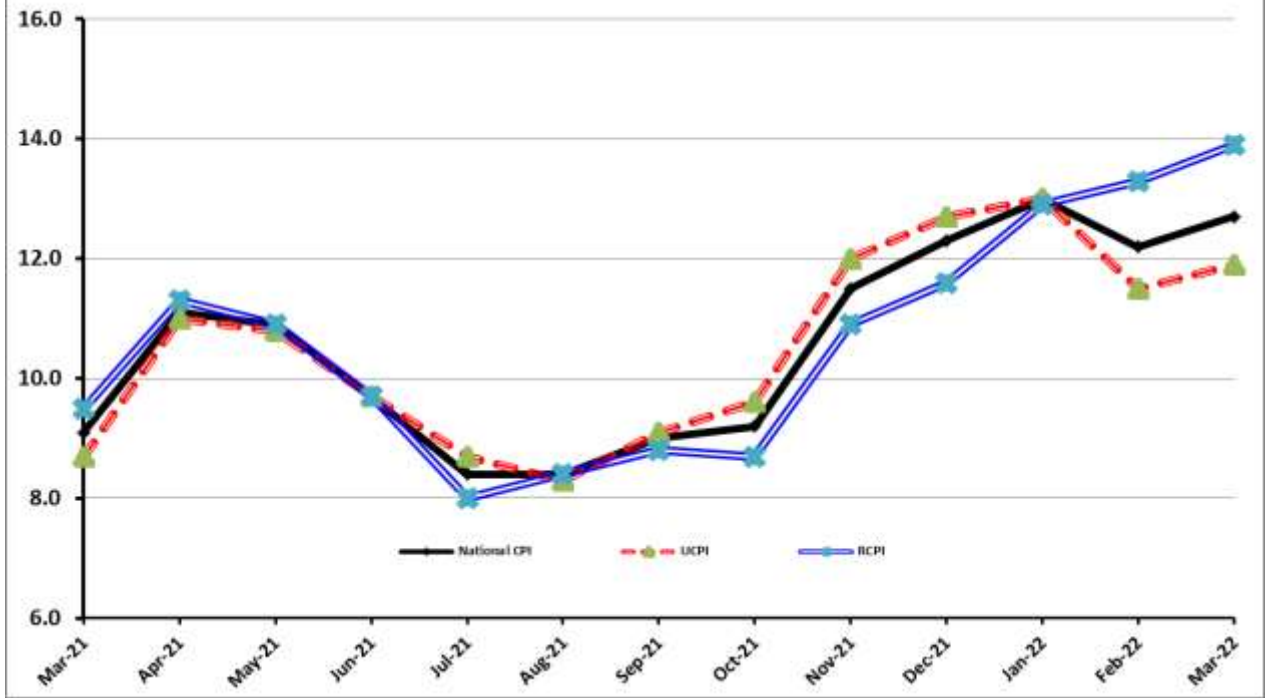
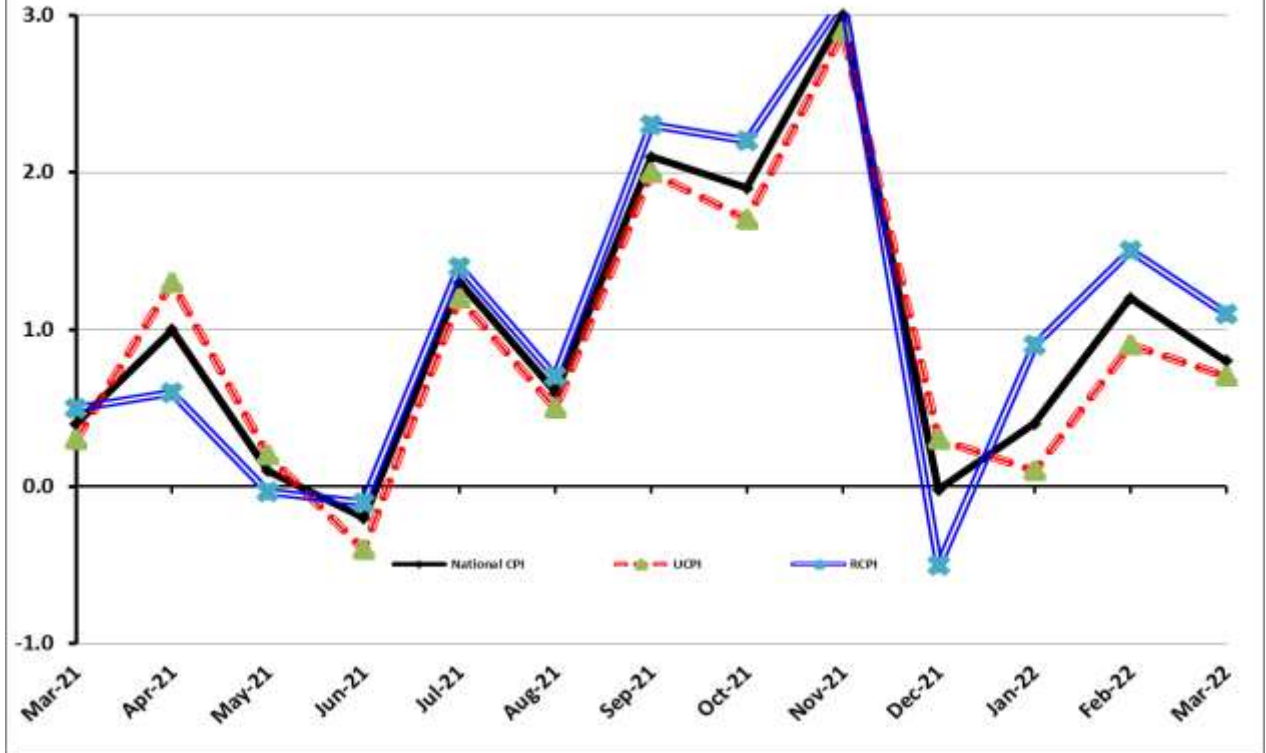


Figure 6: CPI M.o.M (National, Urban, Rural)



I. National Consumer Price Index (N-CPI)

The **National Consumer Price Index** for **March 2022** is **increased** by 0.79% over **February 2022** and increased by 12.72% over corresponding month of the last year i.e. **March 2021**.

Table 1: Consumer Price Index (National) by Group of Commodities and Services (Base 2015-16)									
No	Group	Group Weight (%)	Indices			% Change March 2022 Over		Impact (In % points) March 2022 Over	
			Mar 22	Feb 22	Mar 21	Feb 22	Mar 21	Feb 22	Mar 21
	General	100.00	161.88	160.61	143.61	0.79	12.72	0.79	12.72
1.	Food & Non-alcoholic Bev.	34.58	170.06	166.31	147.49	2.25	15.30	0.81	5.43
	<i>Non-perishable Food Items</i>	29.60	172.40	167.93	152.12	2.66	13.33	0.82	4.18
	<i>Perishable Food Items</i>	4.99	156.19	156.72	120.02	-0.34	30.13	-0.02	1.26
2.	Alcoholic Bev. & Tobacco	1.02	147.13	147.07	144.48	0.04	1.83	0.00	0.02
3.	Clothing & Footwear	8.60	161.16	159.56	146.94	1.00	9.67	0.09	0.85
4.	Housing, Water, Electricity, Gas & Fuels	23.63	152.19	155.68	140.48	-2.25	8.33	-0.51	1.93
5.	Furnishing & Household Equipment Maintenance	4.10	158.42	156.31	139.20	1.36	13.81	0.05	0.55
6.	Health	2.79	167.01	166.06	151.85	0.57	9.99	0.02	0.29
7.	Transport	5.91	180.85	180.29	143.25	0.31	26.25	0.02	1.55
8.	Communication	2.21	110.31	110.29	107.57	0.03	2.55	0.00	0.04
9.	Recreation & Culture	1.59	136.71	134.90	125.05	1.34	9.32	0.02	0.13
10.	Education	3.79	155.72	148.76	143.83	4.68	8.26	0.16	0.31
11.	Restaurants & Hotels	6.92	161.81	160.41	141.25	0.88	14.56	0.06	0.99
12.	Miscellaneous	4.87	168.77	166.07	150.17	1.63	12.39	0.08	0.63

II. Urban Consumer Price Index (UCPI)

The Urban Consumer Price Index for **March 2022** is increased by 0.65% over **February 2022** and increased by 11.94% over corresponding month of the last year i.e. **March 2021**.

Table 2: Consumer Price Index (Urban) by Group of Commodities and Services (Base 2015-16)

No	Group	Group Weight (%)	Indices			% Change March 2022 Over		Impact (In % points) March 2022 Over	
			Mar 22	Feb 22	Mar 21	Feb 22	Mar 21	Feb 22	Mar 21
	General	100.00	160.07	159.03	142.99	0.65	11.94	0.65	11.94
1.	Food & Non-alcoholic Bev.	30.42	168.17	164.76	146.51	2.07	14.78	0.65	4.61
	<i>Non-perishable Food Items</i>	25.97	170.35	166.05	150.79	2.59	12.97	0.70	3.55
	<i>Perishable Food Items</i>	4.46	155.53	157.22	121.56	-1.07	27.95	-0.05	1.06
2.	Alcoholic Bev.& Tobacco	0.85	155.67	155.56	153.44	0.07	1.45	0.00	0.01
3.	Clothing & Footwear	8.01	158.48	157.08	144.65	0.89	9.56	0.07	0.77
4.	Housing, Water, Electricity, Gas & Fuels	27.03	151.06	154.52	141.07	-2.24	7.08	-0.59	1.89
5.	Furnishing & Household Equip. & Maintenance	4.09	155.73	154.01	138.33	1.12	12.58	0.04	0.50
6.	Health	2.31	167.16	165.61	151.94	0.94	10.02	0.02	0.25
7.	Transport	6.14	182.29	181.41	144.34	0.49	26.29	0.03	1.63
8.	Communication	2.35	112.57	112.56	108.95	0.01	3.32	0.00	0.06
9.	Recreation & Culture	1.73	132.47	131.23	121.89	0.94	8.68	0.01	0.13
10.	Education	4.88	159.39	150.87	146.26	5.65	8.98	0.26	0.45
11.	Restaurants & Hotels	7.41	160.94	159.82	140.53	0.70	14.52	0.05	1.06
12.	Miscellaneous	4.77	167.48	164.52	149.64	1.80	11.92	0.09	0.60

Main contributors to month-on-month and year-on-year percentage changes are given below and detail is given in **Annexure-A**.

1. MONTH-ON-MONTH Top few commodities which varied from previous month are given below:

FOOD

Increased: Chicken (33.63%), Fruits (15.17%), Mustard Oil (8.73%), Vegetable ghee (8.32%), Onions (7.01%), Cooking Oil (5.05%), Gram whole (2.11%), Tea (1.92%), Milk (1.52%) and Besan (0.91%).

Decreased: Tomatoes (36.53%), Eggs (14.75%), Wheat (4.89%), Potatoes (3.68%), Condiments & Spices (2.38%), Gur (1.10%), Wheat flour (1.08%) and Sugar (1.02%).

NON-FOOD

Increased: Liquefied Hydrocarbons (7.79%), Woolen Cloth (3.14%), Furniture & Furnishing (2.53%), Construction Input Items (2.00%), Stationery (1.83%), Motor Vehicles (1.76%), Cotton Cloth (1.42%), Motor Vehicle Accessories (1.36%) and Washing Soap/Detergents/Match Box (1.01%).

Decreased: Electricity Charges (13.40%), Motor Fuel (1.95%) and Solid Fuel (0.09%).

2. YEAR-ON-YEAR: Top few commodities which varied from corresponding month of previous year i.e. March, 2021 are given below:

FOOD

Increased: Tomatoes (148.65%), Mustard Oil (59.91%), Vegetable Ghee (49.56%), Cooking Oil (48.05%), Pulse Masoor (38.32%), Vegetables (34.92%), Fruits (32.00%), Gram whole (25.37%), Meat (23.68%), Chicken (19.59%) and Beans (13.62%).

Decreased: Pulse Moong (27.11%), Eggs (20.32%), Condiments & Spices (15.41%), Sugar (10.7%) and Potatoes (9.49%).

NON-FOOD

Increased: Liquefied Hydrocarbons (78.88%), Motor Fuel (36.98%), Cleaning & Laundering (23.60%), Washing Soap/Detergents/Match Box (16.71%), Motor Vehicle Accessories (15.63%) and Solid Fuel (12.88%).

III. Rural Consumer Price Index (RCPI)

The Rural Consumer Price Index for March 2022 is increased by 1.00% over February 2022 and increased by 13.88% over corresponding month of the last year i.e. March 2021.

Table 3: Consumer Price Index (Rural) by Group of Commodities and Services (Base 2015-16)

No	Group	Group Weight (%)	Indices			% Change March 2022 Over		Impact (In % points) March 2022 Over	
			Mar 22	Feb 22	Mar 21	Feb 22	Mar 21	Feb 22	Mar 21
	General	100.00	164.62	162.99	144.55	1.00	13.88	1.00	13.88
1.	Food & Non-alcoholic Bev.	40.87	172.19	168.06	148.60	2.46	15.87	1.03	6.67
	<i>Non-perishable Food Items</i>	35.08	174.70	170.03	153.61	2.75	13.73	1.01	5.12
	<i>Perishable Food Items</i>	5.79	156.95	156.14	118.23	0.52	32.75	0.03	1.55
2.	Alcoholic Bev. & Tobacco	1.28	138.51	138.51	135.45	0.00	2.26	0.00	0.03
3.	Clothing & Footwear	9.48	164.57	162.73	149.87	1.13	9.81	0.11	0.96
4.	Housing, Water, Electricity, Gas & Fuels	18.49	154.67	158.25	139.19	-2.26	11.12	-0.41	1.98
5.	Furnishing & Household Equip. & Maintenance	4.10	162.48	159.76	140.50	1.70	15.64	0.07	0.62
6.	Health	3.51	166.87	166.51	151.76	0.22	9.96	0.01	0.37
7.	Transport	5.56	178.44	178.43	141.43	0.01	26.17	0.00	1.42
8.	Communication	1.99	106.30	106.24	105.11	0.06	1.13	0.00	0.02
9.	Recreation & Culture	1.38	144.74	141.86	131.05	2.03	10.45	0.02	0.13
10.	Education	2.13	143.04	141.47	135.46	1.11	5.60	0.02	0.11
11.	Restaurants & Hotels	6.19	163.39	161.47	142.56	1.19	14.61	0.07	0.89
12.	Miscellaneous	5.02	170.62	168.29	150.92	1.38	13.05	0.07	0.68

Main contributors to Month-on-Month and Year-on-Year percentage changes are given below and detail is given in **Annexure-B**.

1. MONTH-ON-MONTH Top few commodities which varied from previous month are given below:

FOOD

Increased: Chicken (33.34%), Fruits (16.67%), Cooking Oil (12.35%), Vegetable Ghee (10.30%), Onions (6.50%), Mustard Oil (5.54%), Vegetables (4.65%), Beans (2.83%), Tea (2.33%), Gram Whole (1.74%), Besan (1.62%) and Milk (1.16%).

Decreased: Tomatoes (33.87%), Eggs (13.97%), Potatoes (3.78%), Wheat (2.39%), Wheat Flour (1.32%), Gur (1.20%) and Pulse Moong (0.23%)

NON-FOOD

Increased: Liquefied Hydrocarbons (5.58%), Stationery (3.35%), Construction Input Items (3.34%), Washing Soaps/Detergents/Match Box (2.47%), Cotton Cloth (2.34%), Cleaning & Laundering (2.24%) and Readymade Garments (1.74%).

Decreased: Electricity Charges (13.40%), Motor Fuels (2.24%) and Solid Fuel (0.20%).

2. YEAR-ON-YEAR: Top few commodities which varied from corresponding month of previous year i.e. March 2021 are given below:

FOOD

Increased: Tomatoes (158.82%), Cooking Oil (63.47%), Mustard Oil (57.2%), Vegetable Ghee (56.43%), Vegetables (45.62%), Fruits (37.80%), Pulse Masoor (37.46%), Gram Whole (33.39%), Meat (25.19%), Beans (17.38%), Wheat Flour (16.22%), Chicken (15.09%) and Tea (11.74%).

Decreased: Pulse Moong (27.05%), Eggs (15.05%), Condiments & Spices (14.89%), Sugar (9.62%) and Potatoes (9.00%).

NON-FOOD

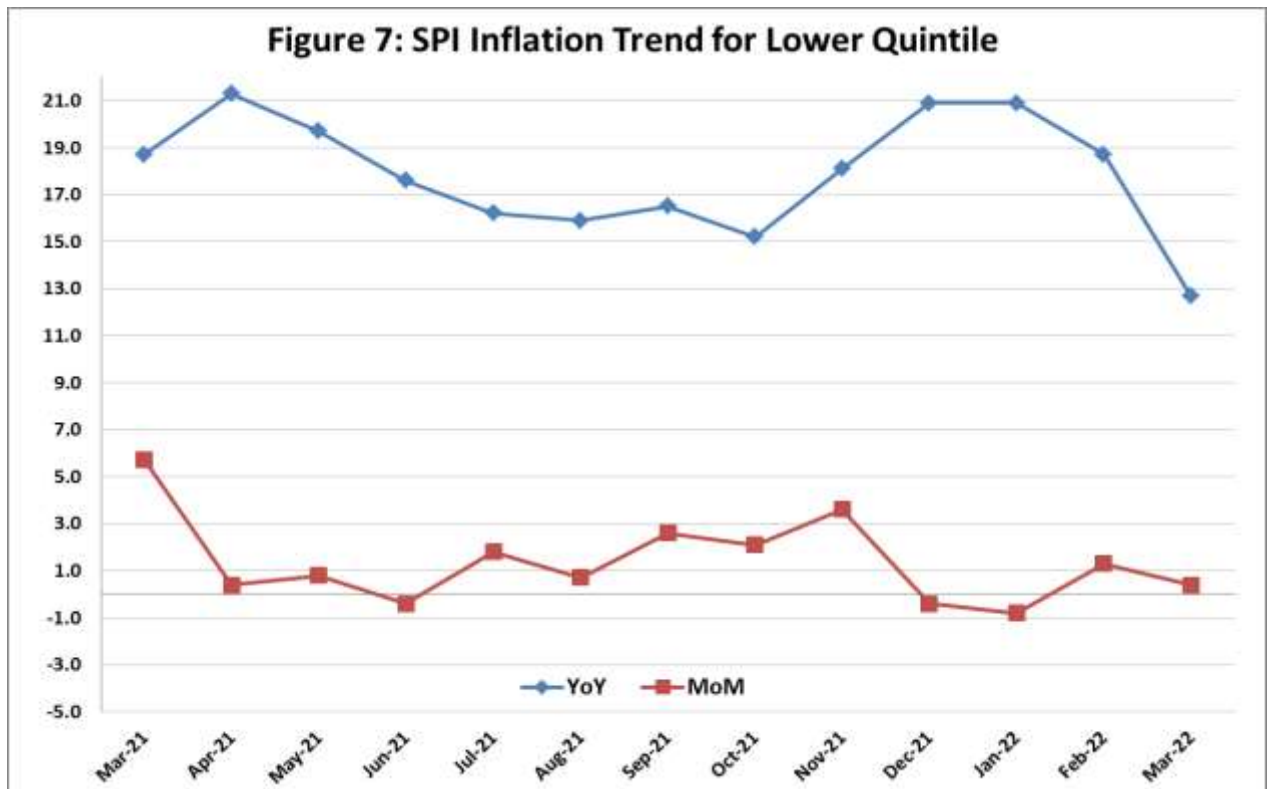
Increased: Liquefied Hydrocarbons (59.03%), Motor Fuels (35.77%), Washing Soaps/Detergents/Match Box (19.85%), Cleaning & Laundering (19.28%), Motor Vehicles Accessories (16.32%), Construction Input Items (16.07%), Solid Fuel (15.07%) and Hosiery (15.04%).

IV. Sensitive Price Indicator

Quintile-wise percentage changes YoY and MoM are given below in Table 4. The series from March 2021 to March 2022 is also graphed below in Figure 7.

Table 4: Sensitive Price Indicator (Base 2015-16)					
Quintiles	Indices			% Change March 2022 Over	
	Mar, 2022	Feb, 2022	Mar, 2021	Feb, 2022	Mar, 2021
1	178.78	177.64	158.18	0.64	13.02
2	169.44	168.90	148.37	0.32	14.20
3	171.32	169.79	149.15	0.90	14.86
4	167.98	165.99	145.49	1.20	15.46
5	172.13	171.10	147.39	0.60	16.79
Combined	170.63	169.60	147.39	0.61	15.77

Table 4.1 : Weekly Percentage Change of SPI During March - 2022					
Quintiles	% Change with Previous week				
	03-03-2022	10-03-2022	17-03-2022	24-03-2022	31-03-2022
Quintile 1	0.12	0.48	-0.99	1.24	0.91
Combined	0.04	0.52	-1.37	1.1	0.53



V. Wholesale Price Index

The Wholesale Price Index for March, 2022 increased by 3.86% over February, 2022. It increased by 23.78% over the corresponding month of the last year i.e. March, 2021. YoY and MoM movements, from March, 2021 to March, 2022 are also graphed below in Figure 8.

Table 5: Wholesale Price Index by Group of Commodities (Base 2015-16)

No	Group	Group Weight (%)	Indices			% Change March 2022 Over		Impact (In % points) March 2022 Over	
			Mar 22	Feb 22	Mar 21	Feb 22	Mar 21	Feb 22	Mar 21
	General	100.00	201.43	193.95	162.73	3.86	23.78	3.86	23.78
1	Agriculture Forestry & Fishery	25.77	206.82	204.55	164.20	1.11	25.96	0.30	6.75
2	Ores/Minerals, Elec., Gas & Water	12.01	194.00	185.27	171.15	4.71	13.35	0.54	1.69
3	Food, Beverages, Tobacco, Textiles & Leather Products	31.11	182.00	177.39	159.33	2.60	14.23	0.74	4.33
	i. Food Products, Beverages & Tobacco	20.07	177.32	170.52	151.60	3.99	16.97	0.70	3.17
	ii. Textiles & Apparels	10.33	194.74	194.29	177.01	0.23	10.02	0.02	1.13
	iii. Leather Products	0.71	129.02	126.23	120.94	2.21	6.68	0.01	0.04
4	Other Transportable Goods	22.40	231.35	214.05	163.34	8.08	41.64	2.00	9.36
5	Metal Product, Machinery & Equipment	8.72	188.22	182.00	157.32	3.42	19.64	0.28	1.65

Main contributors to month-on-month and year-on-year percentage changes are given below and detail is given in **Annexure-C**.

1. MONTH-ON-MONTH: Top few commodities which varied from previous month are given below:

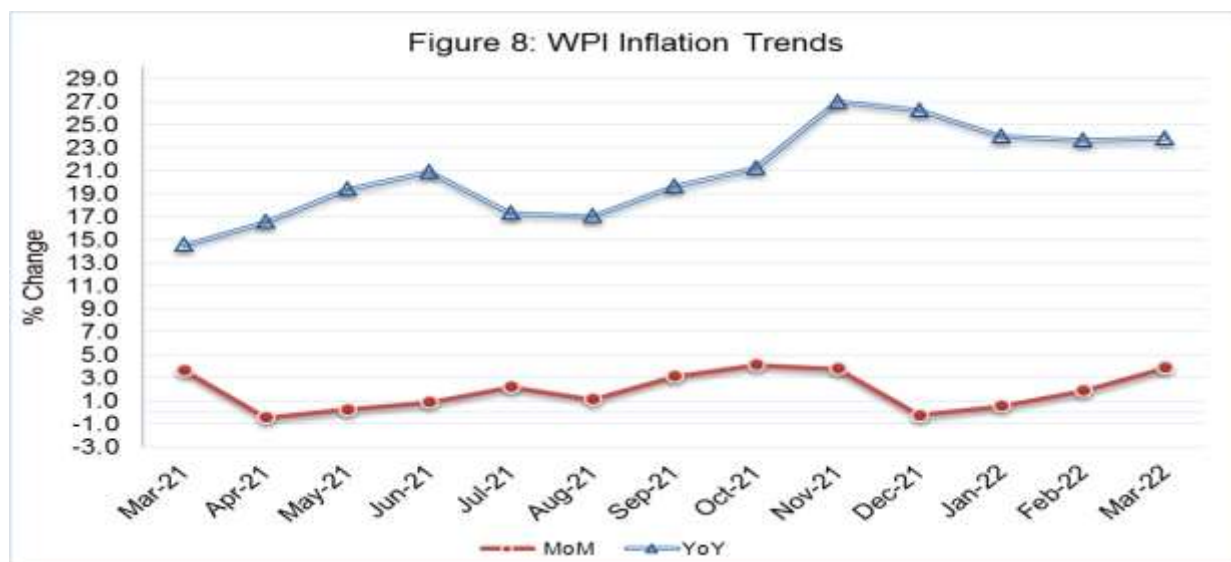
Increased: Coal (57.42%), Poultry (32.70%), Furnace Oil (29.50%), Concrete Mixture (26.97%), Air Conditioners (19.50%), Fruits (16.81%), Chuff Cutter (15.39%), Tractors (15.37%), Vegetable Ghee (14.53%), Vegetable Oils (8.49%), Cement (6.70%), Bicycles (5.77%), Leather (5.56%), Chemicals (5.19%), Milk (4.63%), Coffee & Tea (4.46%), Maize (3.43%) and Kerosene Oil (3.32%).

Decreased: Eggs (14.33%), Stimulant & Spice Crops (10.85%), Vegetables (7.37%), Potatoes (5.69%), Motor Spirit (2.68%), Bajra (2.65%), Wheat (2.29%), Diesel (1.91%) and Fish (1.05%)

2. YEAR-ON-YEAR: Top few commodities which varied from previous year are given below:

Increased: Furnace Oil (74.62%), Cultivators (68.18%), Vegetable Ghee (64.06%), Oil Seeds (63.32%), Concrete Mixture (63.24%), Fibre Crops (62.89%), Vegetables (58.03%), Coal (57.42%), Kerosene Oil (53.31%), Chemicals (50.12%), Steel Bar & Sheets (47.22%), Vegetable Oils (42.14%), Fertilizers (38.38%), Diesel (37.2%), Motor Spirit (37.14%), Fruits (31.60%), Tractors (30.77%), Bed Foam (28.94%), Cement (27.48%) and Poultry (24.72%).

Decreased: Spices (35.76%), Eggs (23.14%), Stimulant & Spice Crops (22.24%), Sugar (9.26%), Maize (3.53%) and Potatoes (3.16%).



Annexure A:CPI (Urban) Index Numbers by Commodity Groups & Commodities (2015-16=100)

Item and Specification	Weight	Index Numbers			% Change in Mar 2022 over		
		Mar 22	Feb 22	Mar 21	Feb 2022	Mar 2021	
General	100.0000	160.07	159.03	142.99	+	0.65	+ 11.94
Food and non-alcoholic Bevera	30.4215	168.17	164.76	146.51	+	2.07	+ 14.78
01 Wheat	0.6120	176.80	185.89	169.23	-	4.89	+ 4.47
02 Wheat flour	3.0075	155.97	157.68	139.04	-	1.08	+ 12.18
03 Wheat products	0.0936	180.71	174.10	160.24	+	3.80	+ 12.77
04 Besan	0.0830	140.28	139.01	126.25	+	0.91	+ 11.11
05 Rice	1.1804	157.93	156.84	142.43	+	0.69	+ 10.88
06 Bakery and confectionary	0.4770	166.04	164.74	143.03	+	0.79	+ 16.09
07 Nimco	0.1224	172.11	169.35	141.67	+	1.63	+ 21.49
08 Meat	2.0411	194.83	193.27	157.53	+	0.81	+ 23.68
09 Chicken	1.3631	206.67	154.66	172.82	+	33.63	+ 19.59
10 Fish	0.3855	123.38	124.33	115.39	-	0.76	+ 6.92
11 Milk fresh	7.1070	155.45	153.12	139.22	+	1.52	+ 11.66
12 Milk products	0.6407	157.87	156.51	142.41	+	0.87	+ 10.86
13 Milk powder	0.3106	156.17	145.86	136.73	+	7.07	+ 14.22
14 Eggs	0.5083	153.41	179.95	192.54	-	14.75	- 20.32
15 Butter	0.0932	224.43	208.20	191.73	+	7.80	+ 17.06
16 Mustard oil	0.0120	247.02	227.19	154.47	+	8.73	+ <u>59.91</u>
17 Cooking oil	1.1016	250.86	238.81	169.44	+	5.05	+ 48.05
18 Vegetable ghee	1.0324	267.27	246.75	178.71	+	8.32	+ 49.56
19 Dry fruits	0.3299	152.94	152.61	141.80	+	0.22	+ 7.86
20 Fresh fruits	1.4363	172.19	149.51	130.45	+	15.17	+ 32.00
21 Pulse masoor	0.1624	149.15	148.48	107.83	+	0.45	+ 38.32
22 Pulse moong	0.1697	109.54	110.31	150.28	-	0.70	- 27.11
23 Pulse mash	0.1152	118.85	118.96	113.12	-	0.09	+ 5.07
24 Pulse gram	0.1660	138.31	138.43	126.88	-	0.09	+ 9.01
25 Gram whole	0.0912	160.58	157.26	128.08	+	2.11	+ 25.37
26 Beans	0.0408	181.26	179.97	159.53	+	0.72	+ 13.62
27 Potatoes	0.4496	148.23	153.89	163.78	-	3.68	- 9.49
28 Onions	0.5928	90.20	84.29	86.94	+	7.01	+ 3.75
29 Tomatoes	0.3459	182.91	288.19	73.56	-	36.53	+ <u>148.6</u>
30 Fresh vegetables	1.5306	160.82	161.29	119.20	-	0.29	+ 34.92
31 Sugar	1.1130	141.36	142.81	158.29	-	1.02	- 10.70
32 Gur	0.0379	160.81	162.60	144.83	-	1.10	+ 11.03
33 Honey	0.1017	156.08	156.03	131.08	+	0.03	+ 19.07
34 Sweetmeat	0.3535	186.04	183.39	149.91	+	1.45	+ 24.10
35 Ice cream	0.1044	147.48	146.93	137.47	+	0.37	+ 7.28
36 Condiments and Spices	1.3340	175.93	180.21	207.97	-	2.38	- 15.41
37 Dessert preparation	0.0419	140.80	139.72	131.54	+	0.77	+ 7.04
38 Tea	0.8427	158.48	155.49	140.83	+	1.92	+ 12.53
39 Beverages	0.8906	140.01	138.19	130.41	+	1.32	+ 7.36
Alcoholic Beverages, Tobacco	0.8540	155.67	155.56	153.44	+	0.07	+ 1.45
40 Cigarettes	0.7167	141.09	141.09	141.06	+	0.00	+ 0.02
41 Pan prepared	0.1373	231.75	231.10	218.11	+	0.28	+ 6.25
Clothing and footwear	8.0096	158.48	157.08	144.65	+	0.89	+ 9.56
42 Cotton cloth	2.2227	165.48	163.16	149.21	+	1.42	+ 10.90
43 Woolen cloth	0.8361	153.75	149.07	140.20	+	3.14	+ 9.66
44 Readymade garments	1.3196	146.41	146.03	137.77	+	0.26	+ 6.27
45 Woolen readymade garments	0.4307	159.54	159.54	142.21	+	0.00	+ 12.19
46 Tailoring	1.0741	156.47	155.59	143.43	+	0.57	+ 9.09
47 Hosiery	0.4070	154.65	153.93	141.45	+	0.47	+ 9.33
48 Dopatta	0.1713	136.27	134.42	128.26	+	1.38	+ 6.25
49 Cleaning and Laundering	0.0665	182.58	181.31	147.72	+	0.70	+ 23.60
50 Footwear	1.4816	165.08	165.07	150.68	+	0.01	+ 9.56
Housing, water, Elec., Gas an	27.0332	151.06	154.52	141.07	-	2.24	+ 7.08
51 House rent	19.2558	144.19	144.19	135.86	+	0.00	+ 6.13
52 Construction input items	0.3765	169.00	165.69	150.90	+	2.00	+ 11.99
53 Construction wage rates	0.2025	166.59	166.27	154.60	+	0.19	+ 7.76
54 Water supply	0.5269	164.74	163.51	158.19	+	0.75	+ 4.14
55 Garbage collection	0.1064	182.71	182.71	173.70	+	0.00	+ 5.19
56 Electricity charges	4.5562	148.98	172.03	142.12	-	13.40	+ 4.83
57 Gas charges	1.0807	216.94	216.94	216.94	+	0.00	+ 0.00
58 Liquefied Hydrocarbons	0.5064	261.95	243.01	146.44	+	7.79	+ <u>78.88</u>
59 Solid Fuel	0.4218	137.02	137.15	121.39	-	0.09	+ 12.88

Annexure A:CPI (Urban) Index Numbers by Commodity Groups & Commodities (2015-16=100)

Item and Specification	Weight	Index Numbers			% Change in Mar 2022 over			
		Mar 22	Feb 22	Mar 21	Feb 2022	Mar 2021		
<i>Furnishing and household equi</i>	4.0937	155.73	154.01	138.33	+	1.12	+	12.58
60 Furniture and furnishing	0.4750	154.19	150.38	140.45	+	2.53	+	9.78
61 Carpets	0.0308	121.86	121.67	113.21	+	0.16	+	7.64
62 Household textiles	0.3420	142.76	141.86	134.74	+	0.63	+	5.95
63 Household Equipments	1.0032	156.11	153.72	138.46	+	1.55	+	12.75
64 Plastic products	0.0536	135.42	134.53	121.98	+	0.66	+	11.02
65 Major tools & Equipments	0.0084	152.12	151.49	137.94	+	0.42	+	10.28
66 Washing soap/detergents/match	1.4112	165.23	163.58	141.57	+	1.01	+	16.71
67 Household servant	0.7695	147.34	147.16	134.66	+	0.12	+	9.42
<i>Health</i>	2.3098	167.16	165.61	151.94	+	0.94	+	10.02
68 Drugs and medicines	1.0735	169.37	166.91	151.74	+	1.47	+	11.62
69 Therapeutic Appliances and Eq	0.0054	122.87	122.47	116.53	+	0.33	+	5.44
70 Doctor (MBBS) clinic fee	0.4044	207.52	206.40	190.20	+	0.54	+	9.11
71 Dental services	0.0156	135.34	135.20	128.10	+	0.10	+	5.65
72 Medical tests	0.2367	142.89	142.66	133.32	+	0.16	+	7.18
73 Hospitals services	0.5742	145.87	145.15	134.03	+	0.50	+	8.83
<i>Transport</i>	6.1368	182.29	181.41	144.34	+	0.49	+	26.29
74 Motor vehicles	0.8097	169.77	166.83	153.87	+	1.76	+	10.33
75 Motor vehicle accessories	0.1941	161.89	159.72	140.01	+	1.36	+	15.63
76 Motor fuel	2.9088	210.22	214.41	153.47	-	1.95	+	36.98
77 Mechanical services	0.4290	154.90	153.70	136.87	+	0.78	+	13.17
78 Motor vehicle tax	0.0482	136.37	136.37	126.72	+	0.00	+	7.62
79 Transport services	1.7470	151.85	143.67	127.54	+	5.69	+	19.06
<i>Communication</i>	2.3536	112.57	112.56	108.95	+	0.01	+	3.32
80 Postal services	0.0190	164.62	164.62	161.25	+	0.00	+	2.09
81 Communication apparatus	0.4524	129.54	129.48	119.49	+	0.05	+	8.41
82 Communication Services	1.8822	107.97	107.97	105.89	+	0.00	+	1.96
<i>Recreation and culture</i>	1.7301	132.47	131.23	121.89	+	0.94	+	8.68
83 Recreation and culture	0.6478	118.21	117.46	113.44	+	0.64	+	4.20
84 Text books	0.6655	135.16	134.06	120.80	+	0.82	+	11.89
85 Newspapers	0.0716	151.55	151.55	151.55	+	0.00	+	0.00
86 stationery	0.3452	150.07	147.38	133.68	+	1.83	+	12.26
<i>Education</i>	4.8807	159.39	150.87	146.26	+	5.65	+	8.98
87 Education	4.8807	159.39	150.87	146.26	+	5.65	+	8.98
<i>Restaurants and hotels</i>	7.4050	160.94	159.82	140.53	+	0.70	+	14.52
88 Readymade food	5.5235	163.34	161.98	142.01	+	0.84	+	15.02
89 Marriage Hall Charges	1.7514	156.20	156.03	137.88	+	0.11	+	13.29
90 Accommodation Services	0.1301	122.69	118.79	113.20	+	3.28	+	8.38
<i>Misc. goods and services</i>	4.7720	167.48	164.52	149.64	+	1.80	+	11.92
91 Personal Grooming Services	0.8001	152.27	151.34	137.64	+	0.61	+	10.63
92 Electrical Appliances for Per	0.0465	132.18	131.65	118.43	+	0.40	+	11.61
93 Appliances/Articles/Products	2.9807	154.47	152.39	140.61	+	1.36	+	9.86
94 Personal Effects n.e.c.	0.9447	223.16	215.56	189.82	+	3.53	+	17.56

Annexure B:CPI (Rural) Index Numbers by Commodity Groups & Commodities (2015-16=100)

Item and Specification	Weight	Index Numbers			% Change in Mar 2022 over			
		Mar 22	Feb 22	Mar 21	Feb 2022	Mar 2021		
General	100.0000	164.62	162.99	144.55	+	1.00	+	13.88
Food and non-alcoholic Bevera	40.8668	172.19	168.06	148.60	+	2.46	+	15.87
01 Wheat	3.4736	182.28	186.74	173.64	-	2.39	+	4.98
02 Wheat Flour	3.4297	168.73	170.98	145.18	-	1.32	+	16.22
03 Wheat Products	0.1068	167.63	167.19	148.91	+	0.26	+	12.57
04 Besan	0.0728	144.71	142.40	130.17	+	1.62	+	11.17
05 Rice	1.5501	201.10	200.24	184.95	+	0.43	+	8.73
06 Bakery and Confectionary	0.3702	168.58	166.78	142.26	+	1.08	+	18.50
07 Nimco	0.0774	159.87	152.22	130.38	+	5.03	+	22.62
08 Meat	1.7146	197.84	195.72	158.03	+	1.08	+	25.19
09 Chicken	1.4641	213.34	160.00	185.37	+	33.34	+	15.09
10 Fish	0.2640	138.65	138.01	125.39	+	0.46	+	10.58
11 Milk fresh	10.3803	147.78	146.08	132.55	+	1.16	+	11.49
12 Milk products	0.9624	144.25	143.32	131.43	+	0.65	+	9.75
13 Milk powder	0.1062	135.55	133.75	128.02	+	1.35	+	5.88
14 Eggs	0.5665	157.09	182.59	184.92	-	13.97	-	15.05
15 Butter	0.3333	169.47	165.12	145.69	+	2.63	+	16.32
16 Mustard oil	0.0136	248.86	235.79	158.31	+	5.54	+	57.20
17 Cooking oil	0.6011	301.03	267.93	184.15	+	12.35	+	63.47
18 Vegetable ghee	2.3764	298.49	270.62	190.81	+	10.30	+	56.43
19 Dry fruits	0.2496	174.45	174.01	156.20	+	0.25	+	11.68
20 Fresh fruits	1.4505	172.60	147.94	125.25	+	16.67	+	37.80
21 Pulse Masoor	0.2076	159.17	158.40	115.79	+	0.49	+	37.46
22 Pulse Moong	0.2510	115.60	115.87	158.46	-	0.23	-	27.05
23 Pulse Mash	0.1465	115.81	115.61	111.21	+	0.17	+	4.14
24 Pulse Gram	0.2751	139.63	139.37	127.01	+	0.19	+	9.94
25 Gram Whole	0.1116	164.72	161.91	123.49	+	1.74	+	33.39
26 Beans	0.0896	197.00	191.58	167.83	+	2.83	+	17.38
27 Potatoes	0.7437	152.66	158.66	167.75	-	3.78	-	9.00
28 Onions	0.8965	83.71	78.60	82.81	+	6.50	+	1.09
29 Tomatoes	0.5069	178.95	270.60	69.14	-	33.87	+	158.8
30 Fresh Vegetables	2.0947	172.85	165.17	118.70	+	4.65	+	45.62
31 Sugar	2.0296	143.15	142.97	158.39	+	0.13	-	9.62
32 Gur	0.1522	150.32	152.15	140.92	-	1.20	+	6.67
33 Honey	0.0296	160.45	160.45	135.28	+	0.00	+	18.61
34 Sweetmeat	0.3967	166.69	163.01	135.12	+	2.26	+	23.36
35 Ice Cream	0.0568	144.57	143.50	135.87	+	0.75	+	6.40
36 Condiments and Spices	1.4919	161.16	159.93	189.35	+	0.77	-	14.89
37 Dessert Preparation	0.0133	139.21	136.43	129.67	+	2.04	+	7.36
38 Tea	1.2566	154.31	150.80	138.10	+	2.33	+	11.74
39 Beverages	0.5537	140.84	140.00	131.10	+	0.60	+	7.43
Alcoholic Beverages, Tobacco	1.2786	138.51	138.51	135.45	+	0.00	+	2.26
40 Cigarettes	1.2364	136.55	136.55	134.13	+	0.00	+	1.80
41 Pan Prepared	0.0422	195.89	195.89	174.00	+	0.00	+	12.58
Clothing and footwear	9.4826	164.57	162.73	149.87	+	1.13	+	9.81
42 Cotton Cloth	2.8381	179.95	175.84	165.05	+	2.34	+	9.03
43 Woolen Cloth	1.0959	157.53	156.46	142.14	+	0.68	+	10.83
44 Readymade Garments	1.1345	157.00	154.31	139.22	+	1.74	+	12.77
45 Woolen Readymade Garments	0.5401	164.85	164.85	143.31	+	0.00	+	15.03
46 Tailoring	1.2999	157.60	157.54	146.82	+	0.04	+	7.34
47 Hosiery	0.4322	207.08	206.54	180.00	+	0.26	+	15.04
48 Dopatta	0.2078	154.50	152.51	138.48	+	1.30	+	11.57
49 Cleaning and Laundering	0.0176	169.05	165.35	141.72	+	2.24	+	19.28
50 Footwear	1.9165	146.40	146.02	136.53	+	0.26	+	7.23
Housing, water, Elec., Gas an	18.4853	154.67	158.25	139.19	-	2.26	+	11.12
51 House Rent	8.6110	145.08	145.08	136.97	+	0.00	+	5.92
52 Construction Input Items	0.6306	150.27	145.41	129.47	+	3.34	+	16.07
53 Construction Wage Rates	0.2526	171.77	171.08	155.79	+	0.40	+	10.26
54 Water Supply	0.0645	218.49	218.49	214.98	+	0.00	+	1.63
55 Garbage Collection	0.0080	160.34	160.34	142.31	+	0.00	+	12.67
56 Electricity Charges	3.4431	148.98	172.03	142.12	-	13.40	+	4.83
57 Liquefied Hydrocarbons	0.9994	214.96	203.60	135.17	+	5.58	+	59.03
58 Solid Fuel	4.4761	162.75	163.07	141.43	-	0.20	+	15.07

Annexure B:CPI (Rural) Index Numbers by Commodity Groups & Commodities (2015-16=100)

Item and Specification	Weight	Index Numbers			% Change in Mar 2022 over	
		Mar 22	Feb 22	Mar 21	Feb 2022	Mar 2021
<i>Furnishing and household equi</i>	4.1031	162.48	159.76	140.50	+	15.64
59 Furniture and Furnishing	0.5786	160.79	159.57	141.78	+	13.41
60 Household Textiles	0.4382	151.32	151.19	133.67	+	13.20
61 Household Equipments	1.2774	165.57	162.76	147.21	+	12.47
62 Plastic Products	0.0776	174.69	173.09	155.81	+	12.12
63 Major Tools and Equipments	0.0324	140.46	140.28	124.08	+	13.20
64 Washing Soaps, Detergents and	1.6989	163.48	159.54	136.40	+	19.85
<i>Health</i>	3.5141	166.87	166.51	151.76	+	9.96
65 Drugs and Medicines	1.5792	172.57	174.21	153.28	-	12.58
66 Doctor Clinic Fee	0.5128	204.84	200.60	185.37	+	10.50
67 Dental Services	0.0181	143.11	139.88	132.61	+	7.92
68 Medical Tests	0.3967	161.68	160.46	153.97	+	5.01
69 Hospitals Services	1.0073	141.07	139.94	131.75	+	7.07
<i>Transport</i>	5.5580	178.44	178.43	141.43	+	26.17
70 Motor Vehicles	0.7305	144.91	142.67	132.29	+	9.54
71 Motor Vehicles Accessories	0.1572	162.26	160.50	139.49	+	16.32
72 Motor Fuels	2.4932	206.53	211.27	152.12	-	35.77
73 Mechanical Services	0.3645	165.07	165.07	155.26	+	6.32
74 Motor Vehicle Tax	0.0174	120.86	120.86	127.98	+	5.56
75 Transport Services	1.7952	157.77	152.22	127.78	+	23.47
<i>Communication</i>	1.9940	106.30	106.24	105.11	+	1.13
76 Postal Services	0.0070	149.43	149.43	149.43	+	0.00
77 Communication Apparatus	0.3362	124.45	124.10	120.50	+	3.28
78 Communication Services	1.6508	102.42	102.42	101.79	+	0.62
<i>Recreation and culture</i>	1.3764	144.74	141.86	131.05	+	10.45
79 Recreation and Culture	0.4763	147.98	145.16	133.47	+	10.87
80 Text Books	0.5047	127.43	126.15	117.28	+	8.65
81 Newspapers	0.0230	165.56	165.56	165.56	+	0.00
82 Stationery	0.3724	162.75	157.48	144.51	+	12.62
<i>Education</i>	2.1342	143.04	141.47	135.46	+	5.60
83 Education	2.1342	143.04	141.47	135.46	+	5.60
<i>Restaurants and hotels</i>	6.1895	163.39	161.47	142.56	+	14.61
84 Readymade Food	3.8001	176.16	174.17	152.83	+	15.27
85 Marriage Hall Charges	2.2525	145.61	143.68	127.73	+	14.00
86 Accommodation Services	0.1369	101.62	101.62	101.62	+	0.00
<i>Misc. goods and services</i>	5.0174	170.62	168.29	150.92	+	13.05
87 Personal Grooming Services	1.5363	176.78	175.52	155.21	+	13.90
88 Appliances/Articles/Products	2.2746	143.44	142.18	131.79	+	8.84
89 Personal Effects n.e.c.	1.2065	214.03	208.32	181.51	+	17.92

Annexure C: Wholesale Price Indices by Major Groups & Commodities

(2015-16=100)

Item and Specification	Weight	Index Numbers			% Change in Mar 2022 over		
		Mar 22	Feb 22	Mar 21	Feb 2022	Mar 2021	
General	100.0000	201.43	193.95	162.73	+	3.86	+ 23.78
Agriculture Forestry & Fisher	25.7674	206.82	204.55	164.20	+	1.11	+ 25.96
001 Wheat	0.6297	174.36	178.44	169.40	-	2.29	+ 2.93
002 Maize	0.6764	170.90	165.23	177.16	+	3.43	- 3.53
003 Rice	2.4413	182.96	183.25	170.94	-	0.16	+ 7.03
004 Sorghum / Jowar	0.0214	233.80	232.83	215.25	+	0.42	+ 8.62
005 Millet / Bajra	0.0374	193.35	198.62	163.77	-	2.65	+ 18.06
006 Vegetables	1.2441	191.86	207.13	121.41	-	7.37	+ <u>58.03</u>
007 Fresh Fruits	1.5144	190.35	162.96	144.64	+	16.81	+ 31.60
008 Dry Fruits	0.2478	144.82	145.30	137.67	-	0.33	+ 5.19
009 Cotton Seeds	1.1511	146.82	146.34	140.12	+	0.33	+ 4.78
010 Other Oil Seeds	0.0722	257.11	254.33	157.43	+	1.09	+ <u>63.32</u>
011 Edible Roots / Potatoes	0.2540	171.12	181.45	176.71	-	5.69	- 3.16
012 Stimulant & Spice Crops	0.1634	199.65	223.94	256.76	-	10.85	- 22.24
013 Pulses	0.4901	154.58	153.12	134.29	+	0.95	+ 15.11
014 Sugar Crops	1.0725	157.93	157.93	139.03	+	0.00	+ 13.59
015 Fibre Crops	5.3169	374.33	374.01	229.80	+	0.09	+ <u>62.89</u>
016 Unmanufactured Tobacco	0.0742	259.68	258.38	233.67	+	0.50	+ 11.13
017 Poultry	0.5633	200.87	151.37	161.06	+	32.70	+ 24.72
018 Raw Milk from Bovine Animals	7.0279	153.70	149.91	138.78	+	2.53	+ 10.75
019 Eggs	0.5034	147.05	171.64	191.31	-	14.33	- 23.14
020 Raw Animal Materials / Wool	0.0351	108.00	108.00	105.62	+	0.00	+ 2.25
021 Hides, Skins & Fur Skins, Raw	0.4834	33.33	33.45	34.48	-	0.36	- 3.34
022 Fuel Wood in Logs	0.0179	134.22	139.90	129.65	-	4.06	+ 3.52
023 Fish Live Fresh or Chilled	1.7295	158.50	160.19	158.20	-	1.05	+ 0.19
Ores/Minerals, Elec., Gas & W	12.0069	194.00	185.27	171.15	+	4.71	+ 13.35
024 Coal not Agglomerated	0.7508	119.31	75.79	75.79	+	<u>57.42</u>	+ <u>57.42</u>
025 Natural Gas Liquefied	5.7065	210.43	209.19	203.20	+	0.59	+ 3.56
026 Salt & Pure Sodium Chloride	0.0584	189.94	188.39	168.93	+	0.82	+ 12.44
027 Electrical Energy	5.4912	187.19	175.35	150.91	+	6.75	+ 24.04
Food, Beverages, Tobacco, Textil	31.1122	182.00	177.39	159.33	+	2.60	+ 14.23
Food Products, Beverages &	20.0718	177.32	170.52	151.60	+	3.99	+ 16.97
028 Meat of Animals	3.4559	196.60	194.21	161.96	+	1.23	+ 21.39
029 Vegetables & Fruit Juice	0.0058	130.12	128.91	117.39	+	0.94	+ 10.84
030 Dried Fruits & Nuts	0.1733	185.58	185.58	177.25	+	0.00	+ 4.70
031 Fruit Juices	0.3880	135.97	136.33	131.32	-	0.26	+ 3.54
032 Vegetable Oils Refined	1.9242	220.22	202.98	154.93	+	8.49	+ 42.14
033 Vegetable Ghee	1.5632	297.78	260.01	181.51	+	14.53	+ <u>64.06</u>
034 Oil Cakes	0.9611	186.63	183.38	166.27	+	1.77	+ 12.25
035 Processed Liquid Milk	4.4437	154.18	147.36	143.47	+	4.63	+ 7.46
036 Milk & Cream in Solid Form	0.0316	143.15	144.98	133.90	-	1.26	+ 6.91
037 Ice Cream	0.0047	148.21	148.21	137.64	+	0.00	+ 7.68
038 Dairy Products N.E.C	0.0117	150.50	145.03	140.73	+	3.77	+ 6.94
039 Wheat Flour	2.3034	166.54	167.58	148.26	-	0.62	+ 12.33
040 Other Cereal Flour	0.0604	146.79	146.72	132.83	+	0.05	+ 10.51
041 Sugar Refined	1.7975	142.46	142.80	156.99	-	0.24	- 9.26
042 Chocolate	0.0139	90.05	89.55	88.95	+	0.56	+ 1.24
043 Sugar Confectionary	0.0738	189.00	189.00	187.19	+	0.00	+ 0.97
044 Coffee & Tea	0.7303	150.61	144.18	129.85	+	4.46	+ 15.99
045 Spices	0.1449	219.44	219.14	341.59	+	0.14	- 35.76
046 Other Food Products	0.0336	118.94	120.16	117.57	-	1.02	+ 1.17
047 Mineral Water	0.0207	139.24	133.79	125.24	+	4.07	+ 11.18
048 Beverages	0.6303	135.43	133.97	129.97	+	1.09	+ 4.20
049 Tobacco Products	1.2998	104.23	104.23	104.23	+	0.00	+ 0.00
Textiles & Apparels	10.3289	194.74	194.29	177.01	+	0.23	+ 10.02
050 Cotton Yarn	5.2491	239.61	239.61	218.76	+	0.00	+ 9.53
051 Nylon Yarn	0.1719	95.24	95.24	95.24	+	0.00	+ 0.00
052 Blended Yarn	0.1689	148.12	148.12	133.08	+	0.00	+ 11.30
053 Woven Fabrics	0.0128	170.33	170.33	152.49	+	0.00	+ 11.70
054 Cotton Fabrics	0.6343	174.86	174.67	156.01	+	0.11	+ 12.08
055 Other Fabrics	1.1016	128.53	127.04	116.18	+	1.17	+ 10.63
056 Silk & Rayon Fabrics	0.7350	181.84	178.96	150.60	+	1.61	+ 20.74
057 Towels	0.1235	153.10	150.42	132.31	+	1.78	+ 15.71
058 Blankets	0.0029	105.56	105.56	104.95	+	0.00	+ 0.58
059 Bed Sheets	0.0913	132.62	132.62	123.12	+	0.00	+ 7.72

Annexure C: Wholesale Price Indices by Major Groups & Commodities

(2015-16=100)

Item and Specification	Weight	Index Numbers			% Change in Mar 2022 over	
		Mar 22	Feb 22	Mar 21	Feb 2022	Mar 2021
060 Quilts	0.0019	131.51	131.51	117.24	+ 0.00	+ 12.17
061 Woolen Carpets	0.0383	146.63	146.63	137.01	+ 0.00	+ 7.02
062 Synthetic Carpets	0.0566	125.27	125.11	116.51	+ 0.13	+ 7.52
063 Hosiery Products	0.8832	146.70	146.70	130.98	+ 0.00	+ 12.00
064 Readymade Garments	1.0576	141.93	141.51	138.04	+ 0.30	+ 2.82
Leather Products	0.7115	129.02	126.23	120.94	+ 2.21	+ 6.68
065 Leather Without Hair	0.2973	126.46	119.80	112.56	+ 5.56	+ 12.35
066 Other Leather N.E.C	0.2567	118.07	118.07	111.77	+ 0.00	+ 5.64
067 Footwear's	0.1575	151.69	151.69	151.69	+ 0.00	+ 0.00
Other Transportable Goods	22.3979	231.35	214.05	163.34	+ 8.08	+ 41.64
068 Timber	0.0165	164.93	164.93	152.83	+ 0.00	+ 7.92
069 Printing Paper	0.4279	130.70	130.70	130.70	+ 0.00	+ 0.00
070 Hard Board	0.1579	146.50	146.50	146.50	+ 0.00	+ 0.00
071 Motor Spirit	1.6268	211.53	217.35	154.24	- 2.68	+ 37.14
072 Diesel Oil	5.4849	219.14	223.41	159.72	- 1.91	+ 37.20
073 Kerosene Oil	0.2151	246.24	238.32	160.62	+ 3.32	+ <u>53.31</u>
074 Furnace Oil	3.2664	501.26	387.08	287.05	+ 29.50	+ <u>74.62</u>
075 Mobil Oil	0.7114	145.07	145.07	122.54	+ 0.00	+ 18.39
076 Chemicals	1.7720	216.07	205.40	143.93	+ 5.19	+ <u>50.12</u>
077 Dyeing Material	0.1539	146.16	146.16	146.16	+ 0.00	+ 0.00
078 Fertilizers	2.8657	152.97	151.80	110.54	+ 0.77	+ 38.38
079 Pesticides	0.2763	147.77	146.51	141.99	+ 0.86	+ 4.07
080 Insecticides	0.1276	111.49	111.49	111.49	+ 0.00	+ 0.00
081 Paints & Varnishes	0.1916	154.44	154.17	136.88	+ 0.18	+ 12.83
082 Medicines	1.1428	168.24	164.46	149.23	+ 2.30	+ 12.74
083 Soaps & Detergents	0.8168	134.14	133.66	116.15	+ 0.36	+ 15.49
084 Auto Tires	0.2703	150.35	149.86	126.14	+ 0.33	+ 19.19
085 Plastic Products	0.4550	125.96	125.96	117.99	+ 0.00	+ 6.75
086 Glass sheets	0.2089	151.54	151.16	147.41	+ 0.25	+ 2.80
087 Other Glass Articles	0.1635	158.06	158.06	149.95	+ 0.00	+ 5.41
088 Ceramics & Sanitary Fixture	0.0244	138.35	138.35	126.79	+ 0.00	+ 9.12
089 Bricks, Blocks & Tiles	0.1566	146.48	144.95	133.86	+ 1.06	+ 9.43
090 Cement	1.8145	157.81	147.90	123.79	+ 6.70	+ 27.48
091 Bed Foam	0.0006	200.24	199.32	155.30	+ 0.46	+ 28.94
092 Matches	0.0505	1226.9	1226.9	1173.30	+ 0.00	+ 4.57
Metal Product, Machinery & Eq	8.7156	188.22	182.00	157.32	+ 3.42	+ 19.64
093 Steel Bar & Sheets	1.4615	265.67	257.51	180.46	+ 3.17	+ 47.22
094 Pipe Fittings	0.0780	214.15	214.15	169.43	+ 0.00	+ 26.39
095 Steel Products	0.3879	141.22	141.22	134.30	+ 0.00	+ 5.15
096 Engines & Motors	0.0046	117.67	117.67	107.29	+ 0.00	+ 9.67
097 Vacuum Pumps	0.0155	107.56	107.56	107.56	+ 0.00	+ 0.00
098 Air Conditioners	0.0049	154.32	129.14	123.30	+ 19.50	+ 25.16
099 Cultivators	0.0551	174.49	174.49	103.75	+ 0.00	+ <u>68.18</u>
100 Chuff Cutter	0.1293	214.29	185.71	121.43	+ 15.39	+ <u>76.47</u>
101 Tractors	0.0028	169.16	146.62	129.36	+ 15.37	+ 30.77
102 Lathe Machines	0.0525	270.02	270.02	217.68	+ 0.00	+ 24.04
103 Concrete Mixture	0.0107	163.24	128.57	100.00	+ 26.97	+ <u>63.24</u>
104 Fridge, WashM, SewM, Fans, Iron	1.1645	171.87	171.18	158.30	+ 0.40	+ 8.57
105 Electric Wires	0.0912	148.23	148.23	144.65	+ 0.00	+ 2.47
106 Lighting Equipments	1.4431	134.82	134.82	119.49	+ 0.00	+ 12.83
107 Radio & Television	0.1843	112.72	108.13	106.16	+ 4.24	+ 6.18
108 Motor Vehicles	0.0244	168.42	168.42	158.44	+ 0.00	+ 6.30
109 Motorcycles	0.2570	160.30	156.65	131.90	+ 2.33	+ 21.53
110 Bicycles	3.3483	194.03	183.45	172.55	+ 5.77	+ 12.45