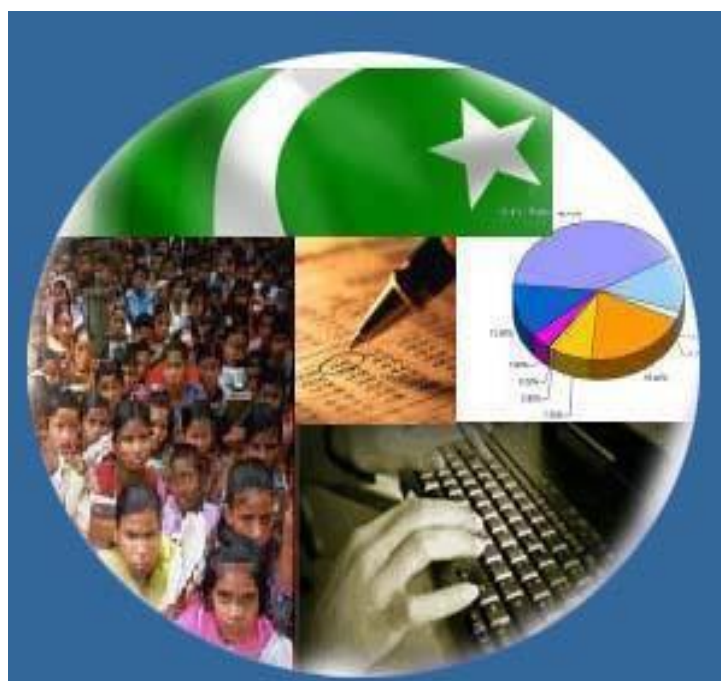




Monthly Review on Price Indices



January, 2022
(Base Year 2015-16)

Government of Pakistan
Ministry of Planning, Development & Special Initiatives
Pakistan Bureau of Statistics
Islamabad

PRICE STATISTICS TEAM

S#	Name	Designation
1.	Dr. Naeem Uz Zafar	Chief Statistician
2.	Syed Ejaz Wasti	Member (National Accounts/Prices)
3.	Dr. Bahrawar Jan	Deputy Director General
4.	Mr. Naseer Ahmad	Director
5.	Dr. Ahtasham Gul	Chief Statistical Officer
6.	Mr. Tauseef ul Hassan Hai	Assistant Census Commissioner
7.	Mr. Adnan Shams	Statistical Officer
8.	Mr. Muhammad Mazhar	Statistical Officer
7.	Mr. Umar Farooq	Statistical Assistant
8.	Mrs. Madiha Gulfraz	Statistical Assistant
9.	Mrs. Humail Fatima	Statistical Assistant
10	Sh. Muhammad Umar Farooq	Statistical Assistant
11.	Mr. Ansar Mahmood	Statistical Assistant

IT & SOFTWARE TEAM

1.	Mrs. Sobia Munawar	Director (DP)
2.	Mr. Muhammad Ehtesham	Director (DP)
3.	Mr. Raja Aurangzeb	Data Processing Assistant
4.	Mr. Muhammad Kibria	Data Processing Assistant
5.	Mr. Muhammad Irfan Bajwa	Data Processing Assistant

Inflation in Brief

- CPI inflation General**, increased by 13.0% on year-on-year basis in January 2022 as compared to an increase of 12.3% in the previous month and 5.7% in January 2021. On month-on-month basis, it increased by 0.4% in January 2022 as compared to decrease of -0.02% in the previous month and a decrease of -0.2% in January 2021.
- CPI inflation Urban**, increased by 13.0% on year-on-year basis in January 2022 as compared to an increase of 12.7% in the previous month and 5.0% in January 2021. On month-on-month basis, it increased by 0.1% in January 2022 as compared to increase of 0.3% in the previous month and a decrease of -0.2% in January 2021.
- CPI inflation Rural**, increased by 12.9% on year-on-year basis in January 2022 as compared to an increase of 11.6% in the previous month and 6.6% in January 2021. On month-on-month basis, it increased by 0.9% in January 2022 as compared to decrease of -0.5% in the previous month and a decrease of -0.3% in January 2021.
- SPI inflation** on YoY increased by 20.9% in January 2022 as compared to an increase of 20.9% a month earlier and an increase of 7.7% in January 2021. On MoM basis, it decreased by -0.8% in January 2022 as compared to decrease of -0.4% a month earlier and a decrease of -0.8% in January 2021.
- WPI inflation** on YoY basis increased by 24.0% in January 2022 as compared to an increase of 26.2% a month earlier and an increase of 6.4% in January 2021. WPI inflation on MoM basis increased by 0.6% in January 2022 as compared to a decrease of -0.2% a month earlier and an increase of 2.5% in corresponding month i.e. January 2021.
- Figures 1 and 2 show graphically the yearly data of Table 1.a for Urban and Rural CPI while Table 1.1 shows "Period Average" and "YoY" percent changes in indices of three years.

Table 1.a General Inflation (%) (Base 2015-16)																		
PERIOD	CPI														SPI**		WPI	
	General						Food				Non-Food							
	National		Urban		Rural		Urban		Rural		Urban		Rural		YoY	MoM	YoY	MoM
	YoY	MoM	YoY	MoM	YoY	MoM	YoY	MoM	YoY	MoM	YoY	MoM	YoY	MoM				
Apr-20	8.5	-0.8	7.7	-0.7	9.8	-1.1	10.4	-1.0	12.9	-1.7	6.2	-0.5	7.4	-0.5	9.3	-1.8	4.9	-2.0
May-20	8.2	0.3	7.3	0.3	9.7	0.3	10.6	1.5	13.7	1.4	5.4	-0.4	6.4	-0.5	11.0	2.2	1.5	-2.1
Jun-20	8.6	0.8	7.6	0.7	10.0	1.0	12.9	1.8	15.2	2.0	4.7	0.0	5.8	0.1	11.5	1.4	0.9	-0.3
Jul-20	9.3	2.5	7.8	2.2	11.6	3.0	15.1	3.0	17.8	4.0	3.9	1.7	6.5	2.2	13.7	3.0	3.2	5.4
Aug-20	8.2	0.6	7.1	0.8	9.9	0.4	11.3	-0.3	13.5	-0.9	4.8	1.5	6.8	1.5	11.7	0.9	3.3	1.3
Sep-20	9.0	1.5	7.7	1.3	11.1	2.0	12.4	3.0	15.8	3.8	5.0	0.2	7.2	0.3	12.0	2.1	4.3	1.0
Oct-20	8.9	1.7	7.3	1.3	11.3	2.4	13.9	2.8	17.7	4.3	3.6	0.3	5.8	0.5	12.3	3.0	5.1	2.9
Nov-20	8.3	0.8	7.0	0.6	10.5	1.1	13.0	1.6	16.1	2.0	3.4	0.1	5.5	0.2	9.9	1.1	5.0	-0.9
Dec-20	8.0	-0.7	7.0	-0.3	9.5	-1.2	12.6	-2.1	13.4	-3.4	3.8	0.7	6.1	1.0	9.1	-2.7	5.7	0.3
Jan-21	5.7	-0.2	5.0	-0.2	6.6	-0.3	7.3	-2.1	7.2	-2.2	3.7	1.1	6.1	1.5	7.7	-0.8	6.4	2.5
Feb-21	8.7	1.8	8.6	2.3	8.8	1.1	10.3	1.3	9.1	0.2	7.6	2.8	8.6	2.0	11.9	3.1	9.5	2.2
Mar-21	9.1	0.4	8.7	0.3	9.5	0.5	11.5	1.7	11.1	1.5	7.1	-0.6	8.1	-0.4	18.7	5.7	14.6	3.7
Apr-21	11.1	1.0	11.0	1.3	11.3	0.6	15.7	2.7	14.1	0.9	8.2	0.5	8.9	0.3	21.3	0.4	16.6	-0.4
May-21	10.9	0.1	10.8	0.2	10.9	-0.03	15.3	1.1	12.8	0.2	8.3	-0.3	9.2	-0.3	19.7	0.8	19.4	0.3
Jun-21	9.7	-0.3	9.6	-0.4	9.7	-0.1	11.0	-1.9	9.8	-0.8	8.8	0.5	9.7	0.6	17.6	-0.4	20.9	0.9
Jul-21	8.4	1.3	8.7	1.29	8.0	1.4	9.4	1.5	7.3	1.6	8.2	1.1	8.7	1.2	16.2	1.8	17.3	2.3
Aug-21	8.4	0.6	8.3	0.5	8.4	0.7	10.2	0.5	9.1	0.8	7.2	0.5	7.7	0.6	15.9	0.7	17.1	1.2
Sep-21	9.0	2.1	9.1	2.0	8.8	2.3	10.8	3.6	9.1	3.7	8.1	1.1	8.5	1.0	16.6	2.7	19.6	3.2
Oct-21	9.2	1.9	9.6	1.7	8.7	2.2	9.4	1.5	7.2	2.6	9.7	1.8	10.0	1.9	15.2	2.1	21.2	4.2
Nov-21	11.5	3.0	12.0	2.9	10.9	3.1	11.9	3.9	8.6	3.3	12.0	2.2	13.0	3.0	18.1	3.6	27.0	3.8
Dec-21	12.3	-0.02	12.7	0.3	11.6	-0.5	11.7	-2.3	9.0	-3.1	13.4	2.0	14.0	1.9	20.9	-0.4	26.2	-0.2
Jan-22	13.0	0.4	13.0	0.1	12.9	0.9	13.3	-0.8	11.8	0.4	12.8	0.6	13.9	1.4	20.9	-0.8	24.0	0.6

** SPI for quintile 1. Digits 0.0* are due to rounding off.

Core inflation (NFNE)

7. Measured by **non-food non-energy Urban** increased by 8.2% on (YoY) basis in January, 2022 as compared to an increase of 8.3% in the previous month and 5.4% in January, 2021. On (MoM) basis, it increased by 0.8% in January, 2022 as compared to increase of 1.1% in previous month, and an increase of 0.9% in corresponding month of last year i.e. January, 2021.
8. Measured by **non-food non-energy Rural** increased by 9.0% on (YoY) basis in January, 2022 as compared to an increase of 8.9% in the previous month and 7.8% in January, 2021. On (MoM) basis, it increased by 1.2% in January, 2022 as compared to an increase of 1.1% in previous month, and an increase of 1.1% in corresponding month of last year i.e. January, 2021.

Core inflation (Trimmed)

9. Measured by 20% **weighted trimmed mean Urban** increased by 10.6% on (YoY) basis in January, 2022 as compared to 10.8% in the previous month and 5.7% in January, 2021. On (MoM) basis, it increased by 0.5% in January, 2022 as compared to an increase of 1.1% in the previous month and an increase of 1.0% in corresponding month of last year i.e. January, 2021.
10. Measured by 20% **weighted trimmed mean Rural** increased by 10.9% on (YoY) basis in January, 2022 as compared to 10.3% in the previous month and by 8.1% in January, 2021. On (MoM) basis, it increased by 1.1% in January, 2022 as compared to an increase of 1.0% in the previous month and an increase of 1.2% in corresponding month of last year i.e. January, 2021.

Table 1.b Core Inflation (%) (Base 2015-16)

Period	NFNE				Trimmed			
	Urban		Rural		Urban		Rural	
	YoY	MoM	YoY	MoM	YoY	MoM	YoY	MoM
Jan-21	5.4	0.9	7.8	1.1	5.7	1.0	8.1	1.2
Feb-21	6.4	1.1	7.7	0.5	7.9	1.0	9.2	0.5
Mar-21	6.3	0.2	7.3	0.3	8.1	0.4	9.4	0.3
Apr-21	7.0	0.9	7.7	0.7	9.8	0.6	10.6	0.2
May-21	6.8	0.2	7.6	0.3	10.0	0.2	10.3	0.4
Jun-21	6.7	0.3	7.3	0.4	9.4	0.3	9.8	0.6
Jul-21	6.9	0.8	6.9	0.7	9.0	0.8	8.4	0.8
Aug-21	6.3	0.2	6.2	0.2	7.8	0.4	7.8	0.6
Sep-21	6.4	0.4	6.2	0.5	8.7	0.9	8.2	1.2
Oct-21	6.7	0.9	6.7	1.0	8.7	1.1	8.2	1.6
Nov-21	7.6	1.1	8.2	1.8	9.8	1.7	9.5	2.2
Dec-21	8.3	1.1	8.9	1.1	10.8	1.1	10.3	1.0
Jan-22	8.2	0.8	9.0	1.2	10.6	0.5	10.9	1.1

Table 1.1 Period Average and Y-o-Y % Change

INDEX	Average Jul - Jan % changes			Jan over Jan % changes		
	2021-2022	2020-2021	2019-2020	2021-2022	2020-2021	2019-2020
CPI (National)	10.26	8.19	11.60	12.96	5.65	14.57
CPI (Urban)	10.51	6.98	11.32	12.99	5.03	13.41
CPI (Rural)	9.92	10.02	12.03	12.93	6.59	16.36
SPI	17.70	10.92	15.35	20.90	7.68	18.26
WPI	21.83	4.72	13.61	23.96	6.37	15.36

Figure 1: Urban Inflation - YoY, Special Indices

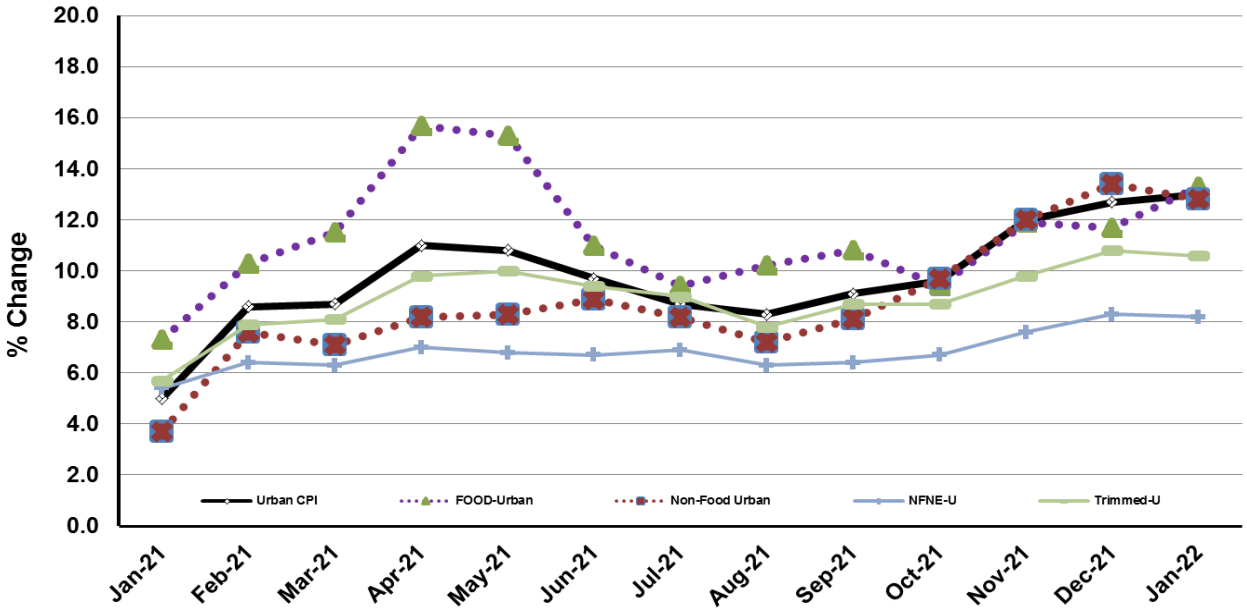


Figure 2: Rural Inflation - YoY, Special Indices

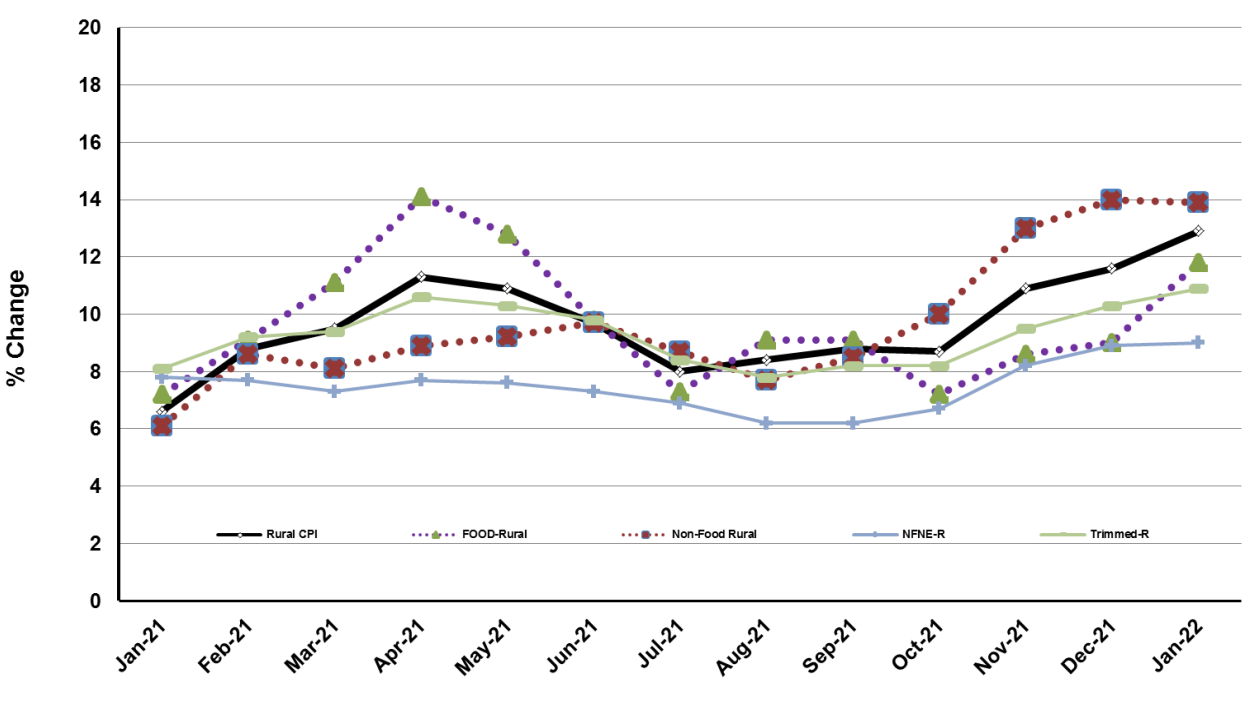


Figure 3: UCPI Inflation MoM, Special Indices

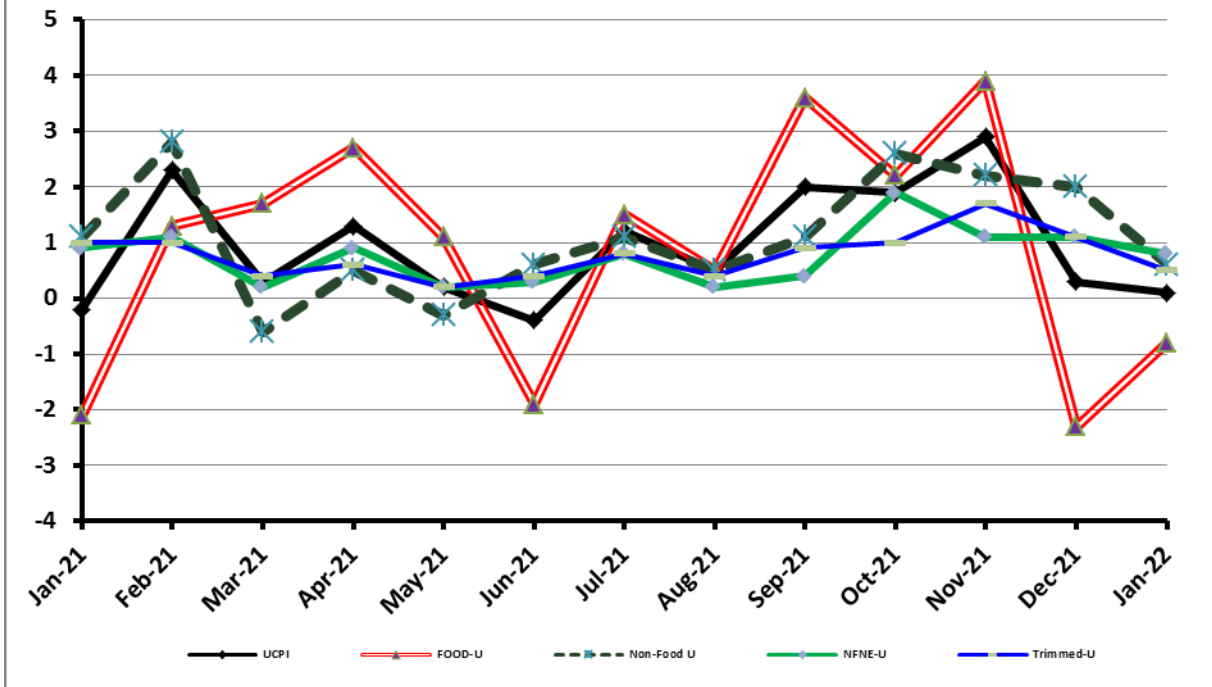


Figure 4: RPI Inflation MoM, Special Indices

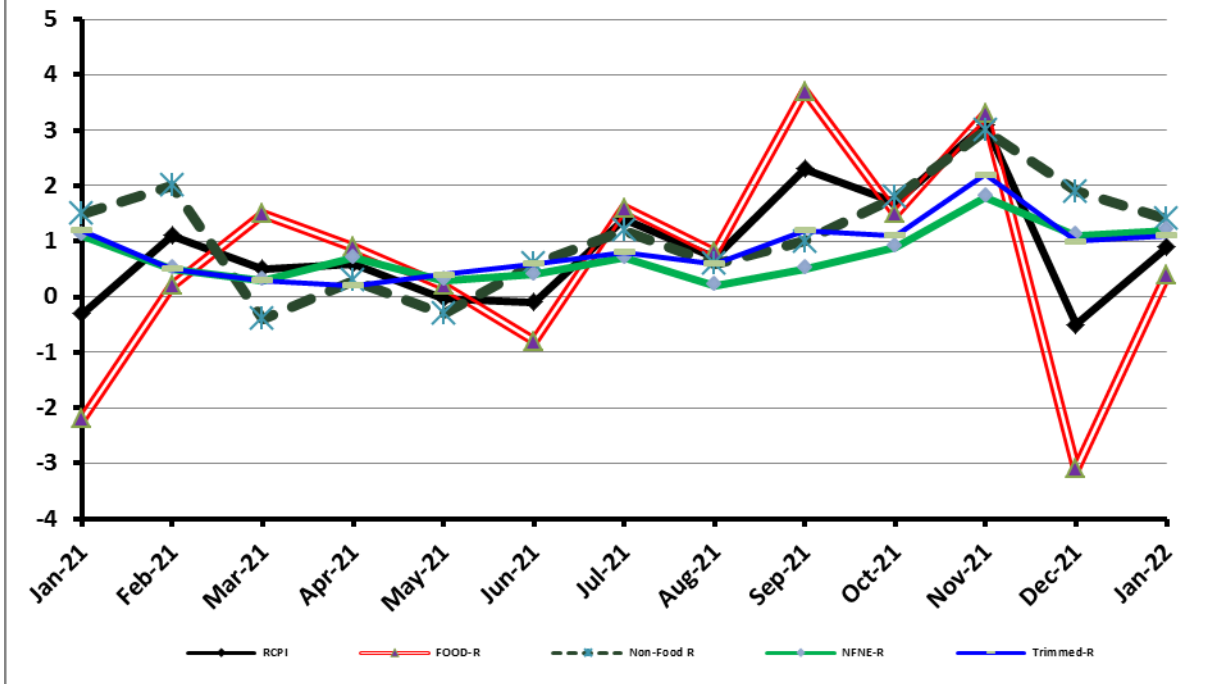


Figure 5: CPI Y.o.Y (National, Urban, Rural)

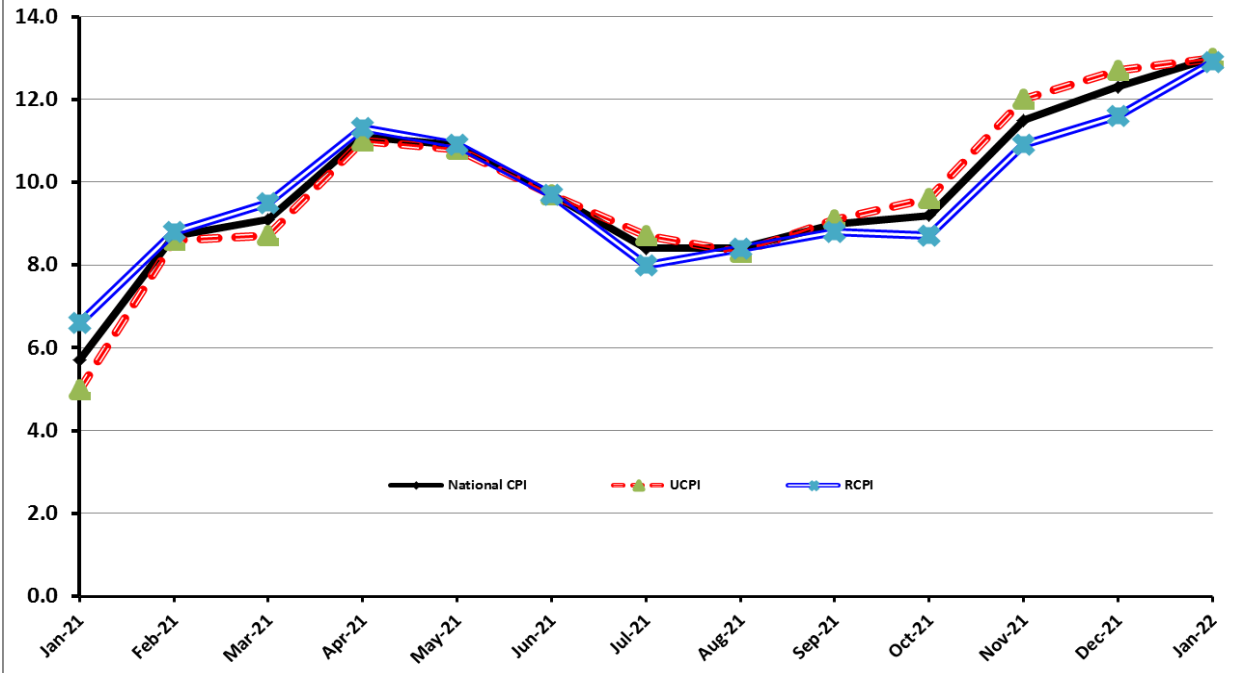
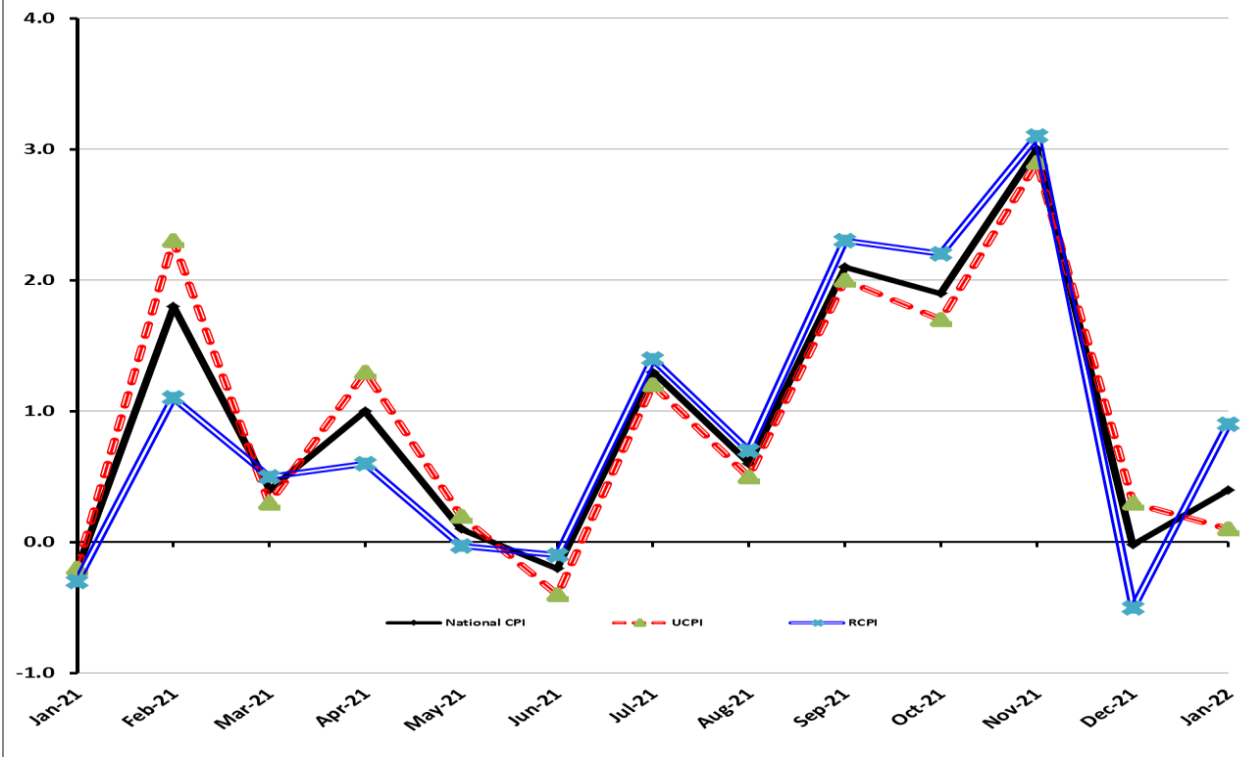


Figure 6: CPI M.o.M (National, Urban, Rural)



I. National Consumer Price Index (N-CPI)

The **National Consumer Price Index** for **January 2022** is **increased** by 0.39% over **December 2021** and increased by 12.96% over corresponding month of the last year i.e. **January 2021**.

Table 1: Consumer Price Index (National) by Group of Commodities and Services (Base 2015-16)

No	Group	Group Weight (%)	Indices			% Change January 2022 Over		Impact (In % points) January 2022 Over	
			Jan 22	Dec 21	Jan 21	Dec 21	Jan 21	Dec 21	Jan 21
	General	100.00	158.78	158.16	140.56	0.39	12.96	0.39	12.96
1.	Food & Non-alcoholic Bev.	34.58	162.23	162.96	143.79	-0.45	12.82	-0.16	4.54
	<i>Non-perishable Food Items</i>	29.60	166.40	165.99	146.26	0.25	13.77	0.08	4.24
	<i>Perishable Food Items</i>	4.99	137.44	145.01	129.13	-5.22	6.43	-0.24	0.29
2.	Alcoholic Bev. & Tobacco	1.02	146.68	146.48	143.77	0.14	2.02	0.00	0.02
3.	Clothing & Footwear	8.60	158.03	156.81	142.14	0.78	11.18	0.07	0.97
4.	Housing, Water, Electricity, Gas & Fuels	23.63	158.15	156.63	136.89	0.97	15.53	0.23	3.57
5.	Furnishing & Household Equipment Maintenance	4.10	153.62	152.01	135.91	1.06	13.03	0.04	0.52
6.	Health	2.79	162.66	161.46	149.03	0.74	9.15	0.02	0.27
7.	Transport	5.91	174.08	172.34	141.48	1.01	23.05	0.07	1.37
8.	Communication	2.21	110.27	110.11	107.51	0.14	2.57	0.00	0.04
9.	Recreation & Culture	1.59	134.17	133.60	124.41	0.43	7.84	0.01	0.11
10.	Education	3.79	148.36	147.76	143.81	0.41	3.17	0.01	0.12
11.	Restaurants & Hotels	6.92	157.78	156.27	139.66	0.97	12.97	0.07	0.89
12.	Miscellaneous	4.87	164.33	162.99	148.93	0.82	10.34	0.04	0.53

II. Urban Consumer Price Index (UCPI)

The Urban Consumer Price Index of **January 2022** is increased by 0.06% over **December 2021** and increased by 12.99% over corresponding month of the last year i.e. **January 2021**.

Table 2: Consumer Price Index (Urban) by Group of Commodities and Services (Base 2015-16)

No	Group	Group Weight (%)	Indices			% Change January 2022 Over		Impact (In % points) January 2022 Over	
			Jan 22	Dec 21	Jan 21	Dec 21	Jan 21	Dec 21	Jan 21
	General	100.00	157.56	157.46	139.45	0.06	12.99	0.06	12.99
1.	Food & Non-alcoholic Bev.	30.42	161.12	162.85	141.87	-1.06	13.57	-0.33	4.20
	<i>Non-perishable Food Items</i>	25.97	165.25	165.94	144.08	-0.42	14.69	-0.11	3.94
	<i>Perishable Food Items</i>	4.46	137.08	144.84	128.98	-5.36	6.28	-0.22	0.26
2.	Alcoholic Bev.& Tobacco	0.85	155.25	155.24	152.14	0.01	2.04	0.00	0.02
3.	Clothing & Footwear	8.01	155.09	153.96	137.97	0.73	12.41	0.06	0.98
4.	Housing, Water, Electricity, Gas & Fuels	27.03	157.06	156.18	137.52	0.56	14.21	0.15	3.79
5.	Furnishing & Household Equip. & Maintenance	4.09	150.95	149.61	134.95	0.90	11.86	0.04	0.47
6.	Health	2.31	162.93	162.05	148.06	0.54	10.04	0.01	0.25
7.	Transport	6.14	175.48	174.72	142.26	0.43	23.35	0.03	1.46
8.	Communication	2.35	112.55	112.43	108.87	0.11	3.38	0.00	0.06
9.	Recreation & Culture	1.73	130.97	130.62	121.14	0.27	8.11	0.00	0.12
10.	Education	4.88	150.69	150.01	146.25	0.45	3.04	0.02	0.16
11.	Restaurants & Hotels	7.41	156.62	155.66	138.39	0.62	13.17	0.05	0.97
12.	Miscellaneous	4.77	162.52	161.40	147.67	0.69	10.06	0.03	0.51

Main contributors to month-on-month and year-on-year percentage changes are given below and detail is given in **Annexure-A**.

1. MONTH-ON-MONTH Top few commodities which varied from previous month are given below:

FOOD

Increased: Pulse Masoor (6.13%), Gram whole (4.79%), Fruits (4.11%), Besan (3.82%), Pulse Gram (3.44%), Pulse Mash (3.37%), Wheat (2.68%), Pulse Moong (1.88%), Meat (1.78%) and Rice (1.28%).

Decreased: Tomatoes (42.88%), Potatoes (13.32%), Condiments & Spices (7.50%), Chicken (2.24%), Vegetables (1.65%), Wheat flour (1.28%) and Eggs (1.13%)

NON-FOOD

Increased: Woolen Readymade Garments (6.67%), Solid Fuel (5.16%), Hosiery (1.93%), Motor Fuel (1.75%), Cleaning & Laundering (1.59%), Washing soap/Detergents/Match Box (1.46%) and Liquefied Hydrocarbons (1.29%).

Decreased: Electricity charges (2.52%) and Construction Input Items (0.08%)

2. YEAR-ON-YEAR: Top few commodities which varied from corresponding month of previous year i.e. January, 2021 are given below:

FOOD

Increased: Cooking Oil (54.33%), Vegetable Ghee (47.4%), Mustard Oil (46.68%), Pulse Masoor (41.3%), Fruits (28.35%), Gram Whole (24.7%), Meat (22.38%), Chicken (17.08%), Pulse Gram (15.67%), Beans (15.37%), Pulse Mash (12.46%) and Vegetables (11.58%).

Decreased: Tomatoes (41.95%), Pulse Moong (24.69%), Onions (4.39%) and Condiments & Spices (2.58%)

NON-FOOD

Increased: Electricity Charges (56.20%), Liquefied Hydrocarbons (53.35%), Motor Fuel (36.22%), Footwear (25.47%), Cleaning & Laundering (22.03%), Washing soap/Detergents/Match Box (17.95%), Motor Vehicle Accessories (14.04%), Woolen Readymade Garments (13.03%) and Plastic Products (11.72%).

III. Rural Consumer Price Index (RCPI)

The Rural Consumer Price Index of January 2022 is increased by 0.89% over December 2021 and increased by 12.93% over corresponding month of the last year i.e. January 2021.

Table 3: Consumer Price Index (Rural) by Group of Commodities and Services (Base 2015-16)

No	Group	Group Weight (%)	Indices			% Change January 2022 Over		Impact (In % points) January 2022 Over	
			Jan 22	Dec 21	Jan 21	Dec 21	Jan 21	Dec 21	Jan 21
	General	100.00	160.62	159.21	142.23	0.89	12.93	0.89	12.93
1.	Food & Non-alcoholic Bev.	40.87	163.47	163.09	145.94	0.23	12.01	0.10	5.04
	<i>Non-perishable Food Items</i>	35.08	167.69	166.04	148.69	0.99	12.78	0.36	4.69
	<i>Perishable Food Items</i>	5.79	137.86	145.21	129.31	-5.06	6.61	-0.27	0.35
2.	Alcoholic Bev. & Tobacco	1.28	138.04	137.65	135.33	0.28	2.00	0.00	0.02
3.	Clothing & Footwear	9.48	161.77	160.44	147.45	0.83	9.71	0.08	0.95
4.	Housing, Water, Electricity, Gas & Fuels	18.49	160.55	157.61	135.50	1.87	18.49	0.34	3.26
5.	Furnishing & Household Equip. & Maintenance	4.10	157.65	155.63	137.36	1.30	14.77	0.05	0.59
6.	Health	3.51	162.39	160.88	149.99	0.94	8.27	0.03	0.31
7.	Transport	5.56	171.75	168.37	140.17	2.01	22.53	0.12	1.23
8.	Communication	1.99	106.20	105.97	105.08	0.22	1.07	0.00	0.02
9.	Recreation & Culture	1.38	140.24	139.24	130.62	0.72	7.36	0.01	0.09
10.	Education	2.13	140.32	139.98	135.37	0.24	3.66	0.00	0.07
11.	Restaurants & Hotels	6.19	159.88	157.36	141.96	1.60	12.62	0.10	0.78
12.	Miscellaneous	5.02	166.93	165.27	150.73	1.00	10.75	0.05	0.57

Main contributors to Month-on-Month and Year-on-Year percentage changes are given below and detail is given in **Annexure-B**.

1. MONTH-ON-MONTH Top few commodities which varied from previous month are given below:

FOOD

Increased: Pulse Masoor (6.97%), Fruits (6.66%), Pulse Gram (4.55%), Gram Whole (4.43%), Pulse Mash (4.09%), Vegetables (3.64%), Eggs (2.69%), Pulse Moong (2.66%), Besan (2.25%), Meat (2.24%), Sugar (1.93%), Cooking oil (1.71%), Mustard oil (1.54%) and Rice (0.88%).

Decreased: Tomatoes (47.89%), Potatoes (12.74%), Onions (2.78%) and Chicken (0.47%).

NON-FOOD

Increased: Solid Fuel (6.65%), Cleaning & Laundering (2.90%), Woolen Readymade Garments (2.88%), Footwear (2.72%), Household Textiles (2.66%), Plastic Products (2.60%), Stationery (2.10%), Motor Fuels (2.03%), Washing Soaps/Detergents/Match Box (1.77%) and Hosiery (0.79%).

Decreased: Electricity Charges (2.52%) and Liquefied Hydrocarbons (0.19%).

2. YEAR-ON-YEAR: Top few commodities which varied from corresponding month of previous year i.e. January 2021 are given below:

FOOD

Increased: Cooking Oil (50.33%), Mustard Oil (49.73%), Vegetable Ghee (49.27%), Pulse Masoor (36.22%), Fruits (29.35%), Gram Whole (29.34%), Meat (21.96%), Vegetables (18.19%), Chicken (17.17%), Beans (13.97%), Besan (12.54%), Pulse Gram (11.63%) and Milk (10.22%).

Decreased: Tomatoes (46.2%), Pulse Moong (24.59%), Condiments & Spices (14.78%) and Onions (7.75%)

NON-FOOD

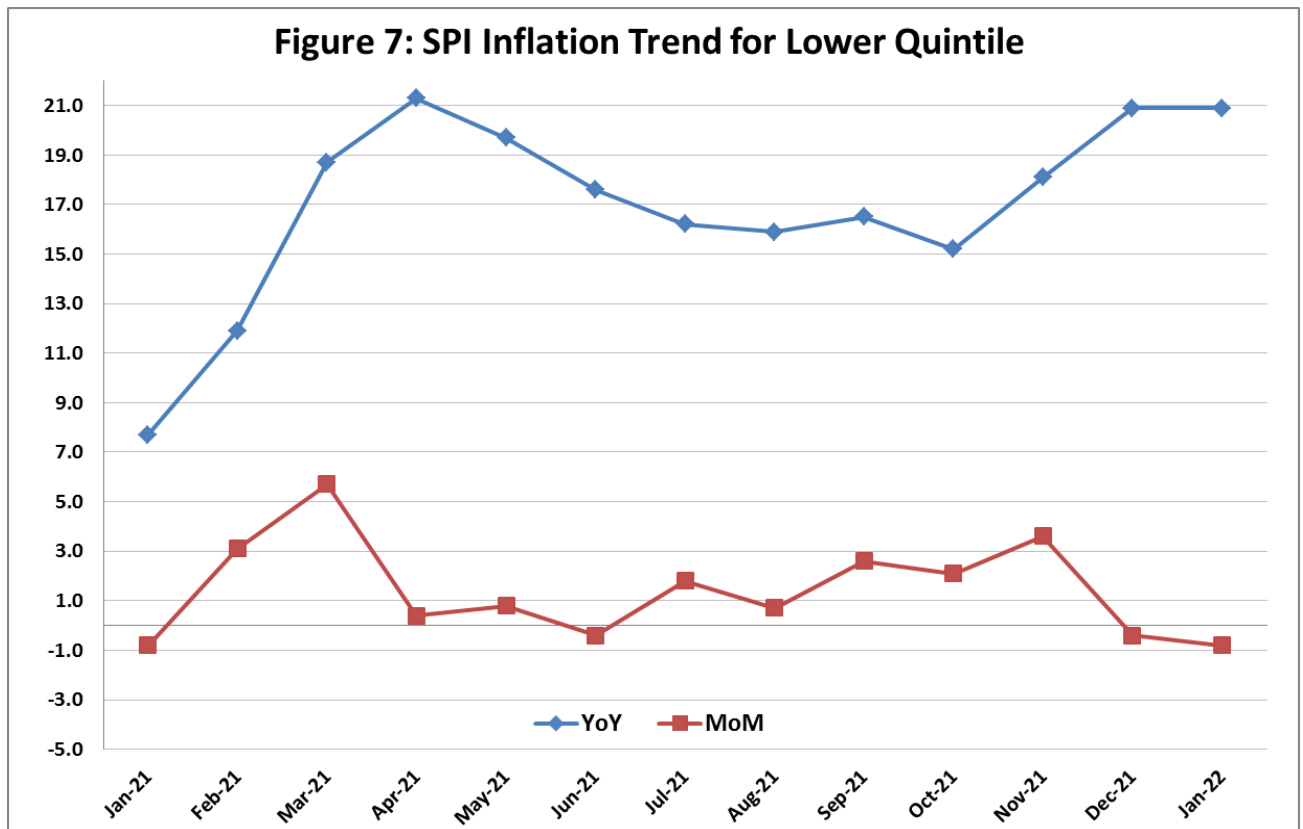
Increased: Electricity Charges (56.20%), Liquefied Hydrocarbons (42.05%), Motor Fuels (34.86%), Washing Soaps/Detergents/Match Box (18.20%), Woolen Readymade Garments (15.63%), Cleaning & Laundering (15.44%), Hosiery (14.62%), Solid Fuel (14.02%), Woolen Cloth (13.74%), Motor Vehicles Accessories (13.34%) and Furniture & Furnishing (12.54%).

IV. Sensitive Price Indicator

Quintile-wise percentage changes YoY and MoM are given below in Table 4. The series from January 2021 to January 2022 is also graphed below in Figure 7.

Table 4: Sensitive Price Indicator (Base 2015-16)					
Quintiles	Indices			% Change January 2022 Over	
	January, 2022	December, 2021	January, 2021	December, 2021	January, 2021
1	175.42	176.81	145.09	-0.79	20.90
2	166.85	167.72	140.35	-0.52	18.88
3	167.47	168.43	142.24	-0.57	17.74
4	163.47	164.34	139.14	-0.53	17.49
5	168.97	169.07	141.10	-0.06	19.75
Combined	167.41	167.79	140.08	-0.23	19.51

Table 4.1 : Weekly Percentage Change of SPI During January - 2022				
Quintiles	% Change with Previous week			
	06-01-2022	13-01-2022	20-01-2022	27-01-2022
Quintile 1	-0.28	-0.3	0.02	-0.07
Combined	0.08	-0.43	-0.06	-0.11



V. Wholesale Price Index

The Wholesale Price Index for January, 2022 increased by 0.65% over December, 2021. It increased by 23.96% over the corresponding month of the last year i.e. January, 2021. YoY and MoM movements, from January, 2021 to January, 2022 are also graphed below in Figure 8.

Table 5: Wholesale Price Index by Group of Commodities (Base 2015-16)

No	Group	Group Weight (%)	Indices			% Change January 2022 Over		Impact (In % points) January 2022 Over	
			Jan 22	Dec 21	Jan 21	Dec 21	Jan 21	Dec 21	Jan 21
	General	100.00	190.31	189.09	153.53	0.65	23.96	0.65	23.96
1	Agriculture Forestry & Fishery	25.77	197.32	189.92	154.41	3.90	27.79	1.01	7.20
2	Ores/Minerals, Elec., Gas & Water	12.01	193.43	194.94	169.13	-0.77	14.37	-0.10	1.90
3	Food, Beverages, Tobacco, Textiles & Leather Products	31.11	177.06	176.19	147.49	0.49	20.05	0.14	5.99
	i. Food Products, Beverages & Tobacco	20.07	170.16	168.85	147.69	0.78	15.21	0.14	2.94
	ii. Textiles & Apparels	10.33	193.97	193.88	149.05	0.05	30.14	0.00	3.02
	iii. Leather Products	0.71	126.23	126.23	119.35	0.00	5.76	0.00	0.03
4	Other Transportable Goods	22.40	202.36	206.13	151.47	-1.83	33.60	-0.45	7.43
5	Metal Product, Machinery & Equipment	8.72	181.56	180.93	156.32	0.35	16.15	0.03	1.43

Main contributors to month-on-month and year-on-year percentage changes are given below and detail is given in **Annexure-C**.

1. MONTH-ON-MONTH: Top few commodities which varied from previous month are given below:

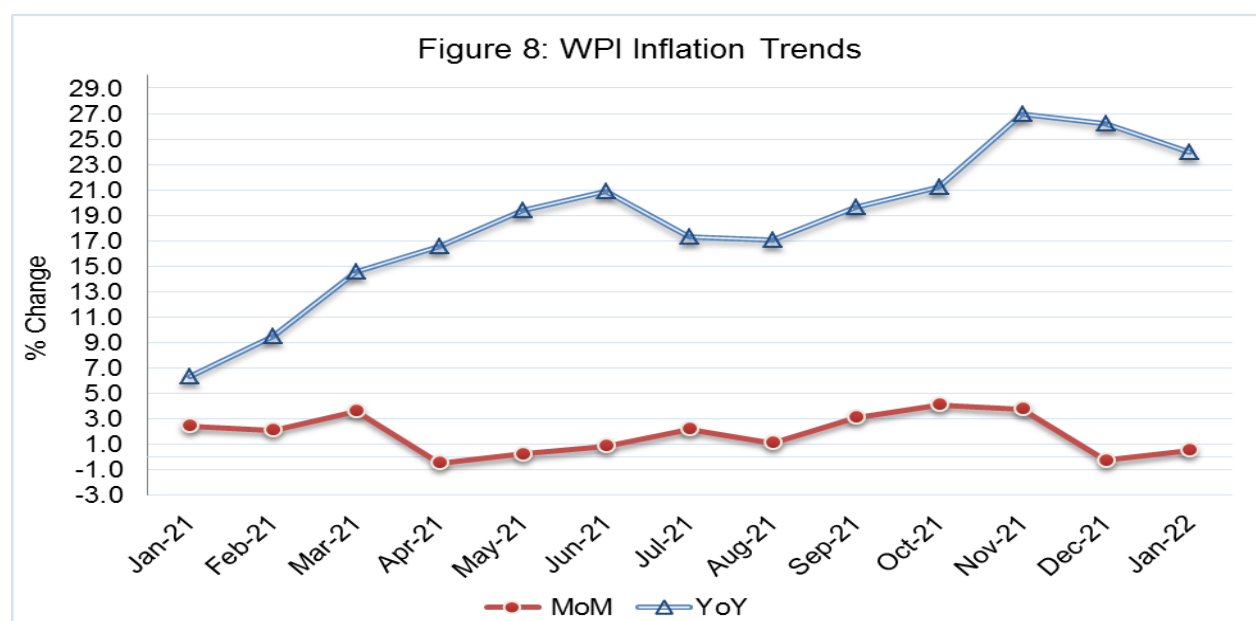
Increased: Jowar (14.19%), Fibre Crops (11.17%), Cereal Flour (6.59%), Bajra (6.04%), Chemicals (3.71%), Wheat (3.32%), Milk (3.29%), Pulses (2.76%), Quilts (2.39%), Eggs (2.27%), Motor Spirit (2.18%), Diesel (2.14%), Fertilizers (1.87%), Kerosene Oil (1.73%), Maize (1.73%), Fruits (1.43%), Sugar (1.30%) and Timber (1.08%).

Decreased: Spices (34.29%), Furnace Oil (11.05%), Potatoes (10.88%), Poultry (7.28%), Electrical Energy (1.84%) and Vegetables (1.25%).

2. YEAR-ON-YEAR: Top few commodities which varied from previous year are given below:

Increased: Fibre Crops (79.77%), Kerosene Oil (53.01%), Oil Seeds (48.34%), Vegetable Ghee (46.35%), Cotton Yarn (45.36%), Chemicals (44.47%), Fertilizers (44.35%), Furnace Oil (44.07%), Steel Bar & Sheets (43.63%), Vegetable Oils (42.57%), Diesel (40.59%), Motor Spirit (36.13%), Electrical Energy (32.84%), Vegetables (25.62%), Bajra (25.42%), Pulses (24.23%), Cement (20.54%), Mobil Oil (19.58%) and Meat (19.46%).

Decreased: Spices (28.94%), Stimulant & Spice Crops (14.27%) and Maize(5.67%).



Annexure A:CPI (Urban) Index Numbers by Commodity Groups & Commodities (2015-16=100)

Item and Specification	Weight	Index Numbers			% Change in Jan 2022 over			
		Jan 22	Dec 21	Jan 21	Dec 2021	Jan 2021		
General	100.0000	157.56	157.46	139.45	+	0.06	+ 12.99	
Food and non-alcoholic Bevera	30.4215	161.12	162.85	141.87	-	1.06	+ 13.57	
01 Wheat	0.6120	183.87	179.07	168.98	+	2.68	+	8.81
02 Wheat flour	3.0075	158.31	160.37	136.70	-	1.28	+	15.81
03 Wheat products	0.0936	171.61	170.40	154.97	+	0.71	+	10.74
04 Besan	0.0830	136.30	131.29	121.77	+	3.82	+	11.93
05 Rice	1.1804	154.07	152.12	138.51	+	1.28	+	11.23
06 Bakery and confectionary	0.4770	162.82	161.51	142.16	+	0.81	+	14.53
07 Nimco	0.1224	166.44	163.59	137.11	+	1.74	+	21.39
08 Meat	2.0411	190.88	187.55	155.97	+	1.78	+	22.38
09 Chicken	1.3631	138.57	141.75	118.35	-	2.24	+	17.08
10 Fish	0.3855	120.35	119.87	118.09	+	0.40	+	1.91
11 Milk fresh	7.1070	152.90	153.75	137.63	-	0.55	+	11.09
12 Milk products	0.6407	155.89	157.39	140.25	-	0.95	+	11.15
13 Milk powder	0.3106	144.37	143.67	135.28	+	0.49	+	6.72
14 Eggs	0.5083	204.06	206.39	190.20	-	1.13	+	7.29
15 Butter	0.0932	207.46	206.36	191.20	+	0.53	+	8.50
16 Mustard oil	0.0120	214.24	213.12	146.06	+	0.53	+	46.68
17 Cooking oil	1.1016	233.50	233.42	151.30	+	0.03	+	<u>54.33</u>
18 Vegetable ghee	1.0324	240.31	240.29	163.03	+	0.01	+	47.40
19 Dry fruits	0.3299	151.54	150.51	145.49	+	0.68	+	4.16
20 Fresh fruits	1.4363	139.31	133.81	108.54	+	4.11	+	28.35
21 Pulse masoor	0.1624	146.75	138.27	103.86	+	6.13	+	41.30
22 Pulse moong	0.1697	111.13	109.08	147.57	+	1.88	-	24.69
23 Pulse mash	0.1152	118.56	114.69	105.42	+	3.37	+	12.46
24 Pulse gram	0.1660	134.56	130.09	116.33	+	3.44	+	15.67
25 Gram whole	0.0912	154.81	147.73	124.15	+	4.79	+	24.70
26 Beans	0.0408	180.91	179.31	156.81	+	0.89	+	15.37
27 Potatoes	0.4496	170.39	196.57	171.71	-	13.32	-	0.77
28 Onions	0.5928	92.43	92.99	96.67	-	0.60	-	4.39
29 Tomatoes	0.3459	98.79	172.94	170.19	-	42.88	-	41.95
30 Fresh vegetables	1.5306	145.71	148.15	130.59	-	1.65	+	11.58
31 Sugar	1.1130	148.70	147.76	149.69	+	0.64	-	0.66
32 Gur	0.0379	162.29	162.39	143.28	-	0.06	+	13.27
33 Honey	0.1017	155.88	151.26	130.72	+	3.05	+	19.25
34 Sweetmeat	0.3535	182.68	180.22	148.82	+	1.36	+	22.75
35 Ice cream	0.1044	146.93	146.93	136.35	+	0.00	+	7.76
36 Condiments and Spices	1.3340	192.68	208.31	197.79	-	7.50	-	2.58
37 Dessert preparation	0.0419	134.51	133.41	127.16	+	0.82	+	5.78
38 Tea	0.8427	152.87	152.80	140.74	+	0.05	+	8.62
39 Beverages	0.8906	135.43	135.42	128.02	+	0.01	+	5.79
Alcoholic Beverages, Tobacco	0.8540	155.25	155.24	152.14	+	0.01	+ 2.04	
40 Cigarettes	0.7167	141.09	141.09	141.02	+	0.00	+	0.05
41 Pan prepared	0.1373	229.15	229.08	210.17	+	0.03	+	9.03
Clothing and footwear	8.0096	155.09	153.96	137.97	+	0.73	+ 12.41	
42 Cotton cloth	2.2227	157.39	156.54	143.01	+	0.54	+	10.06
43 Woolen cloth	0.8361	148.89	148.70	137.04	+	0.13	+	8.65
44 Readymade garments	1.3196	145.32	144.88	133.57	+	0.30	+	8.80
45 Woolen readymade garments	0.4307	159.42	149.45	141.04	+	6.67	+	13.03
46 Tailoring	1.0741	155.42	155.10	142.46	+	0.21	+	9.10
47 Hosiery	0.4070	150.87	148.02	138.26	+	1.93	+	9.12
48 Dopatta	0.1713	133.66	131.81	127.61	+	1.40	+	4.74
49 Cleaning and laundering	0.0665	179.22	176.42	146.87	+	1.59	+	22.03
50 Footwear	1.4816	164.88	164.83	131.41	+	0.03	+	25.47
Housing, water, Elec., Gas an	27.0332	157.06	156.18	137.52	+	0.56	+ 14.21	
51 House rent	19.2558	144.19	142.06	135.86	+	1.50	+	6.13
52 Construction input items	0.3765	165.13	165.26	149.44	-	0.08	+	10.50
53 Construction wage rates	0.2025	165.66	165.44	153.39	+	0.13	+	8.00
54 Water supply	0.5269	163.51	163.00	157.86	+	0.31	+	3.58
55 Garbage collection	0.1064	181.75	179.94	173.35	+	1.01	+	4.85
56 Electricity charges	4.5562	186.50	191.32	119.40	-	2.52	+	<u>56.20</u>
57 Gas charges	1.0807	216.94	216.94	216.94	+	0.00	+	0.00

Annexure A:CPI (Urban) Index Numbers by Commodity Groups & Commodities (2015-16=100)

Item and Specification	Weight	Index Numbers			% Change in Jan 2022 over	
		Jan 22	Dec 21	Jan 21	Dec 2021	Jan 2021
58 Liquefied Hydrocarbons	0.5064	250.94	247.74	163.64	+ 1.29	+ <u>53.35</u>
59 Solid Fuel	0.4218	135.04	128.41	121.54	+ 5.16	+ 11.11
<i>Furnishing and household equi</i>	4.0937	150.95	149.61	134.95	+ 0.90	+ 11.86
60 Furniture and furnishing	0.4750	149.88	148.91	139.61	+ 0.65	+ 7.36
61 Carpets	0.0308	121.35	121.31	112.80	+ 0.03	+ 7.58
62 Household textiles	0.3420	140.23	139.57	133.54	+ 0.47	+ 5.01
63 Household Equipments	1.0032	152.64	152.32	134.03	+ 0.21	+ 13.88
64 Plastic products	0.0536	134.17	133.03	120.09	+ 0.86	+ 11.72
65 Major tools & Equipments	0.0084	149.89	147.86	135.02	+ 1.37	+ 11.01
66 Washing soap/detergents/match	1.4112	160.05	157.75	135.69	+ 1.46	+ 17.95
67 Household servant	0.7695	139.87	138.35	134.48	+ 1.10	+ 4.01
<i>Health</i>	2.3098	162.93	162.05	148.06	+ 0.54	+ 10.04
68 Drugs and medicines	1.0735	164.68	163.73	146.90	+ 0.58	+ 12.10
69 Therapeutic Appliances and Eq	0.0054	120.14	119.84	115.16	+ 0.25	+ 4.32
70 Doctor (MBBS) clinic fee	0.4044	203.20	202.10	186.63	+ 0.54	+ 8.88
71 Dental services	0.0156	130.63	130.59	124.53	+ 0.03	+ 4.90
72 Medical tests	0.2367	138.48	137.30	131.84	+ 0.86	+ 5.04
73 Hospitals services	0.5742	142.65	142.18	130.70	+ 0.33	+ 9.14
<i>Transport</i>	6.1368	175.48	174.72	142.26	+ 0.43	+ 23.35
74 Motor vehicles	0.8097	163.90	163.80	152.30	+ 0.06	+ 7.62
75 Motor vehicle accessories	0.1941	157.22	156.28	137.86	+ 0.60	+ 14.04
76 Motor fuel	2.9088	205.68	202.14	150.99	+ 1.75	+ 36.22
77 Mechanical services	0.4290	149.70	147.77	136.24	+ 1.31	+ 9.88
78 Motor vehicle tax	0.0482	136.37	136.37	126.72	+ 0.00	+ 7.62
79 Transport services	1.7470	139.99	143.85	125.47	- 2.68	+ 11.57
<i>Communication</i>	2.3536	112.55	112.43	108.87	+ 0.11	+ 3.38
80 Postal services	0.0190	164.62	163.41	151.88	+ 0.74	+ 8.39
81 Communication apparatus	0.4524	129.41	128.86	119.48	+ 0.43	+ 8.31
82 Communication Services	1.8822	107.97	107.97	105.89	+ 0.00	+ 1.96
<i>Recreation and culture</i>	1.7301	130.97	130.62	121.14	+ 0.27	+ 8.11
83 Recreation and culture	0.6478	117.37	117.36	112.16	+ 0.01	+ 4.65
84 Text books	0.6655	134.04	134.04	120.80	+ 0.00	+ 10.96
85 Newspapers	0.0716	151.55	151.55	151.55	+ 0.00	+ 0.00
86 stationery	0.3452	146.28	144.58	132.33	+ 1.18	+ 10.54
<i>Education</i>	4.8807	150.69	150.01	146.25	+ 0.45	+ 3.04
87 Education	4.8807	150.69	150.01	146.25	+ 0.45	+ 3.04
<i>Restaurants and hotels</i>	7.4050	156.62	155.66	138.39	+ 0.62	+ 13.17
88 Readymade food	5.5235	158.16	156.96	139.43	+ 0.76	+ 13.43
89 Marriage Hall Charges	1.7514	154.59	154.31	136.99	+ 0.18	+ 12.85
90 Accommodation Services	0.1301	118.71	118.71	113.20	+ 0.00	+ 4.87
<i>Misc. goods and services</i>	4.7720	162.52	161.40	147.67	+ 0.69	+ 10.06
91 Personal Grooming Services	0.8001	144.92	144.86	136.72	+ 0.04	+ 6.00
92 Electrical Appliances for Per	0.0465	130.92	130.12	118.43	+ 0.61	+ 10.55
93 Appliances/Articles/Products	2.9807	151.09	150.40	135.37	+ 0.46	+ 11.61
94 Personal Effects n.e.c.	0.9447	215.02	211.64	197.20	+ 1.60	+ 9.04

Annexure B:CPI (Rural) Index Numbers by Commodity Groups & Commodities (2015-16=100)

Item and Specification	Weight	Index Numbers			% Change in Jan 2022 over	
		Jan 22	Dec 21	Jan 21	Dec 2021	Jan 2021
General	100.0000	160.62	159.21	142.23	+ 0.89	+ 12.93
Food and non-alcoholic Bevera	40.8668	163.47	163.09	145.94	+ 0.23	+ 12.01
01 Wheat	3.4736	181.42	179.03	173.11	+ 1.33	+ 4.80
02 Wheat Flour	3.4297	167.73	166.43	145.39	+ 0.78	+ 15.37
03 Wheat Products	0.1068	165.19	163.12	149.59	+ 1.27	+ 10.43
04 Besan	0.0728	138.73	135.68	123.27	+ 2.25	+ 12.54
05 Rice	1.5501	193.90	192.20	181.70	+ 0.88	+ 6.71
06 Bakery and Confectionary	0.3702	162.59	157.89	142.01	+ 2.98	+ 14.49
07 Nimco	0.0774	147.22	143.72	129.01	+ 2.44	+ 14.12
08 Meat	1.7146	191.35	187.16	156.90	+ 2.24	+ 21.96
09 Chicken	1.4641	147.16	147.85	125.59	- 0.47	+ 17.17
10 Fish	0.2640	133.78	133.23	125.92	+ 0.41	+ 6.24
11 Milk fresh	10.3803	145.40	145.08	131.92	+ 0.22	+ 10.22
12 Milk products	0.9624	142.90	142.10	129.87	+ 0.56	+ 10.03
13 Milk powder	0.1062	132.85	131.99	127.19	+ 0.65	+ 4.45
14 Eggs	0.5665	205.15	199.77	197.09	+ 2.69	+ 4.09
15 Butter	0.3333	159.08	158.36	144.40	+ 0.45	+ 10.17
16 Mustard oil	0.0136	223.86	220.46	149.51	+ 1.54	+ 49.73
17 Cooking oil	0.6011	258.26	253.91	171.79	+ 1.71	+ 50.33
18 Vegetable ghee	2.3764	261.94	258.29	175.48	+ 1.41	+ 49.27
19 Dry fruits	0.2496	171.86	168.67	156.19	+ 1.89	+ 10.03
20 Fresh fruits	1.4505	138.94	130.27	107.41	+ 6.66	+ 29.35
21 Pulse Masoor	0.2076	151.98	142.08	111.57	+ 6.97	+ 36.22
22 Pulse Moong	0.2510	117.29	114.25	155.53	+ 2.66	- 24.59
23 Pulse Mash	0.1465	116.35	111.78	107.40	+ 4.09	+ 8.33
24 Pulse Gram	0.2751	133.20	127.40	119.32	+ 4.55	+ 11.63
25 Gram Whole	0.1116	154.10	147.56	119.14	+ 4.43	+ 29.34
26 Beans	0.0896	188.59	188.20	165.47	+ 0.21	+ 13.97
27 Potatoes	0.7437	192.53	220.64	182.42	- 12.74	+ 5.54
28 Onions	0.8965	83.28	85.66	90.28	- 2.78	- 7.75
29 Tomatoes	0.5069	90.70	174.07	168.60	- 47.89	- 46.20
30 Fresh Vegetables	2.0947	149.18	143.94	126.22	+ 3.64	+ 18.19
31 Sugar	2.0296	150.96	148.10	148.75	+ 1.93	+ 1.49
32 Gur	0.1522	156.86	157.25	141.23	- 0.25	+ 11.07
33 Honey	0.0296	158.11	155.72	130.58	+ 1.53	+ 21.08
34 Sweetmeat	0.3967	159.40	156.53	134.72	+ 1.83	+ 18.32
35 Ice Cream	0.0568	143.50	142.84	133.02	+ 0.46	+ 7.88
36 Condiments and Spices	1.4919	162.02	161.83	190.13	+ 0.12	- 14.78
37 Dessert Preparation	0.0133	135.12	134.01	124.47	+ 0.83	+ 8.56
38 Tea	1.2566	150.24	150.24	137.95	+ 0.00	+ 8.91
39 Beverages	0.5537	139.17	139.14	129.89	+ 0.02	+ 7.14
Alcoholic Beverages, Tobacco	1.2786	138.04	137.65	135.33	+ 0.28	+ 2.00
40 Cigarettes	1.2364	136.31	135.94	134.03	+ 0.27	+ 1.70
41 Pan Prepared	0.0422	188.81	187.85	173.46	+ 0.51	+ 8.85
Clothing and footwear	9.4826	161.77	160.44	147.45	+ 0.83	+ 9.71
42 Cotton Cloth	2.8381	174.71	174.71	160.94	+ 0.00	+ 8.56
43 Woolen Cloth	1.0959	155.16	154.10	136.42	+ 0.69	+ 13.74
44 Readymade Garments	1.1345	153.42	153.39	137.69	+ 0.02	+ 11.42
45 Woolen Readymade Garments	0.5401	164.85	160.24	142.57	+ 2.88	+ 15.63
46 Tailoring	1.2999	156.58	156.08	146.44	+ 0.32	+ 6.92
47 Hosiery	0.4322	203.91	202.31	177.90	+ 0.79	+ 14.62
48 Dopatta	0.2078	151.14	150.25	137.50	+ 0.59	+ 9.92
49 Cleaning and Laundering	0.0176	163.40	158.80	141.54	+ 2.90	+ 15.44
50 Footwear	1.9165	145.64	141.78	135.89	+ 2.72	+ 7.17
Housing, water, Elec., Gas an	18.4853	160.55	157.61	135.50	+ 1.87	+ 18.49
51 House Rent	8.6110	145.08	142.07	136.97	+ 2.12	+ 5.92
52 Construction Input Items	0.6306	146.13	145.84	132.24	+ 0.20	+ 10.50
53 Construction Wage Rates	0.2526	170.81	170.35	154.36	+ 0.27	+ 10.66
54 Water Supply	0.0645	218.49	218.49	214.98	+ 0.00	+ 1.63
55 Garbage Collection	0.0080	158.32	158.32	142.31	+ 0.00	+ 11.25
56 Electricity Charges	3.4431	186.50	191.32	119.40	- 2.52	+ 56.20
57 Liquefied Hydrocarbons	0.9994	202.85	203.23	142.80	- 0.19	+ 42.05
58 Solid Fuel	4.4761	161.53	151.46	141.67	+ 6.65	+ 14.02

Annexure B:CPI (Rural) Index Numbers by Commodity Groups & Commodities (2015-16=100)

Item and Specification	Weight	Index Numbers			% Change in Jan 2022 over			
		Jan 22	Dec 21	Jan 21	Dec 2021	Jan 2021		
<i>Furnishing and household equi</i>	4.1031	157.65	155.63	137.36	+	1.30	+	14.77
59 Furniture and Furnishing	0.5786	158.85	158.41	141.15	+	0.28	+	12.54
60 Household Textiles	0.4382	150.64	146.73	133.02	+	2.66	+	13.25
61 Household Equipments	1.2774	161.37	160.34	143.57	+	0.64	+	12.40
62 Plastic Products	0.0776	169.08	164.80	153.31	+	2.60	+	10.29
63 Major Tools and Equipments	0.0324	137.50	136.48	122.41	+	0.75	+	12.33
64 Washing Soaps, Detergents and	1.6989	156.11	153.39	132.07	+	1.77	+	18.20
<i>Health</i>	3.5141	162.39	160.88	149.99	+	0.94	+	8.27
65 Drugs and Medicines	1.5792	166.44	163.93	151.04	+	1.53	+	10.20
66 Doctor Clinic Fee	0.5128	200.51	198.47	184.30	+	1.03	+	8.80
67 Dental Services	0.0181	139.88	139.88	126.65	+	0.00	+	10.45
68 Medical Tests	0.3967	157.02	157.02	153.43	+	0.00	+	2.34
69 Hospitals Services	1.0073	139.15	138.86	129.94	+	0.21	+	7.09
<i>Transport</i>	5.5580	171.75	168.37	140.17	+	2.01	+	22.53
70 Motor Vehicles	0.7305	142.63	142.59	130.38	+	0.03	+	9.40
71 Motor Vehicles Accessories	0.1572	157.75	155.99	139.18	+	1.13	+	13.34
72 Motor Fuels	2.4932	201.85	197.84	149.67	+	2.03	+	34.86
73 Mechanical Services	0.3645	158.60	158.60	155.26	+	0.00	+	2.15
74 Motor Vehicle Tax	0.0174	120.86	120.86	127.98	+	0.00	-	5.56
75 Transport Services	1.7952	146.19	141.45	128.10	+	3.35	+	14.12
<i>Communication</i>	1.9940	106.20	105.97	105.08	+	0.22	+	1.07
76 Postal Services	0.0070	149.43	149.43	149.43	+	0.00	+	0.00
77 Communication Apparatus	0.3362	123.86	122.46	120.28	+	1.14	+	2.98
78 Communication Services	1.6508	102.42	102.42	101.79	+	0.00	+	0.62
<i>Recreation and culture</i>	1.3764	140.24	139.24	130.62	+	0.72	+	7.36
79 Recreation and Culture	0.4763	142.65	142.27	133.06	+	0.27	+	7.21
80 Text Books	0.5047	126.09	126.09	117.28	+	0.00	+	7.51
81 Newspapers	0.0230	165.56	165.56	165.56	+	0.00	+	0.00
82 Stationery	0.3724	154.76	151.57	143.43	+	2.10	+	7.90
<i>Education</i>	2.1342	140.32	139.98	135.37	+	0.24	+	3.66
83 Education	2.1342	140.32	139.98	135.37	+	0.24	+	3.66
<i>Restaurants and hotels</i>	6.1895	159.88	157.36	141.96	+	1.60	+	12.62
84 Readymade Food	3.8001	171.59	168.67	151.84	+	1.73	+	13.01
85 Marriage Hall Charges	2.2525	143.68	141.66	127.73	+	1.43	+	12.49
86 Accommodation Services	0.1369	101.62	101.62	101.62	+	0.00	+	0.00
<i>Misc. goods and services</i>	5.0174	166.93	165.27	150.73	+	1.00	+	10.75
87 Personal Grooming Services	1.5363	173.90	170.96	151.29	+	1.72	+	14.94
88 Appliances/Articles/Products	2.2746	140.77	139.87	129.56	+	0.64	+	8.65
89 Personal Effects n.e.c.	1.2065	207.36	205.91	189.95	+	0.70	+	9.17

Annexure C: Wholesale Price Indices by Major Groups & Commodities

(2015-16=100)

Item and Specification	Weight	Index Numbers			% Change in Jan 2022 over		
		Jan 22	Dec 21	Jan 21	Dec 2021	Jan 2021	
General	100.0000	190.31	189.09	153.53	+	0.65	+ 23.96
Agriculture Forestry & Fisher	25.7674	197.32	189.92	154.41	+	3.90	+ 27.79
001 Wheat	0.6297	183.73	177.82	166.90	+	3.32	+
002 Maize	0.6764	167.89	165.04	177.99	+	1.73	- 5.67
003 Rice	2.4413	179.21	179.21	167.89	+	0.00	+
004 Sorghum / Jowar	0.0214	232.37	203.49	199.03	+	14.19	+
005 Millet / Bajra	0.0374	200.96	189.52	160.23	+	6.04	+
006 Vegetables	1.2441	167.72	169.84	133.51	-	1.25	+
007 Fresh Fruits	1.5144	140.76	138.78	120.36	+	1.43	+
008 Dry Fruits	0.2478	144.24	143.26	137.49	+	0.68	+
009 Cotton Seeds	1.1511	144.95	145.41	142.03	-	0.32	+
010 Other Oil Seeds	0.0722	235.15	233.96	158.52	+	0.51	+
011 Edible Roots / Potatoes	0.2540	200.02	224.43	195.52	-	10.88	+
012 Stimulant & Spice Crops	0.1634	227.06	225.73	264.86	+	0.59	-
013 Pulses	0.4901	152.37	148.28	122.65	+	2.76	+
014 Sugar Crops	1.0725	154.99	157.96	143.24	-	1.88	+
015 Fibre Crops	5.3169	355.48	319.75	197.74	+	11.17	+
016 Unmanufactured Tobacco	0.0742	257.66	256.82	221.46	+	0.33	+
017 Poultry	0.5633	131.91	142.26	115.05	-	7.28	+
018 Raw Milk from Bovine Animals	7.0279	149.37	148.90	134.81	+	0.32	+
019 Eggs	0.5034	206.49	201.91	187.55	+	2.27	+
020 Raw Animal Materials / Wool	0.0351	108.11	108.11	105.50	+	0.00	+
021 Hides, Skins & Fur Skins, Raw	0.4834	33.15	33.13	30.68	+	0.06	+
022 Fuel Wood in Logs	0.0179	138.13	137.21	128.11	+	0.67	+
023 Fish Live Fresh or Chilled	1.7295	159.31	158.57	158.30	+	0.47	+
Ores/Minerals, Elec., Gas & W	12.0069	193.43	194.94	169.13	-	0.77	+ 14.37
024 Coal not Agglomerated	0.7508	75.79	75.79	75.79	+	0.00	+
025 Natural Gas Liquefied	5.7065	209.04	208.98	204.15	+	0.03	+
026 Salt & Pure Sodium Chloride	0.0584	196.27	170.18	168.75	+	15.33	+
027 Electrical Energy	5.4912	193.27	196.89	145.49	-	1.84	+
Food, Beverages, Tobacco, Textil	31.1122	177.06	176.19	147.49	+	0.49	+ 20.05
Food Products, Beverages &	20.0718	170.16	168.85	147.69	+	0.78	+ 15.21
028 Meat of Animals	3.4559	192.39	190.89	161.05	+	0.79	+
029 Vegetables & Fruit Juice	0.0058	128.58	127.33	114.63	+	0.98	+
030 Dried Fruits & Nuts	0.1733	185.27	182.98	184.90	+	1.25	+
031 Fruit Juices	0.3880	133.71	132.53	128.61	+	0.89	+
032 Vegetable Oils Refined	1.9242	201.01	199.26	140.99	+	0.88	+
033 Vegetable Ghee	1.5632	250.25	249.77	170.99	+	0.19	+
034 Oil Cakes	0.9611	183.74	180.43	157.17	+	1.83	+
035 Processed Liquid Milk	4.4437	148.99	144.24	143.36	+	3.29	+
036 Milk & Cream in Solid Form	0.0316	144.20	137.67	133.20	+	4.74	+
037 Ice Cream	0.0047	148.21	148.21	137.64	+	0.00	+
038 Dairy Products N.E.C	0.0117	144.24	143.55	140.21	+	0.48	+
039 Wheat Flour	2.3034	168.05	166.34	148.26	+	1.03	+
040 Other Cereal Flour	0.0604	145.66	136.65	119.00	+	6.59	+
041 Sugar Refined	1.7975	148.98	147.07	147.48	+	1.30	+
042 Chocolate	0.0139	89.55	89.55	88.54	+	0.00	+
043 Sugar Confectionary	0.0738	188.88	188.88	186.36	+	0.00	+
044 Coffee & Tea	0.7303	143.17	142.93	129.86	+	0.17	+
045 Spices	0.1449	220.27	335.20	309.97	-	34.29	-
046 Other Food Products	0.0336	120.16	119.82	117.57	+	0.28	+
047 Mineral Water	0.0207	127.89	127.09	125.24	+	0.63	+
048 Beverages	0.6303	134.37	134.20	129.38	+	0.13	+
049 Tobacco Products	1.2998	104.23	104.23	104.23	+	0.00	+
Textiles & Apparels	10.3289	193.97	193.88	149.05	+	0.05	+ 30.14
050 Cotton Yarn	5.2491	239.61	239.61	164.84	+	0.00	+
051 Nylon Yarn	0.1719	95.24	95.24	95.24	+	0.00	+
052 Blended Yarn	0.1689	148.12	148.12	120.22	+	0.00	+
053 Woven Fabrics	0.0128	170.33	170.33	144.61	+	0.00	+
054 Cotton Fabrics	0.6343	174.31	173.53	155.34	+	0.45	+
055 Other Fabrics	1.1016	126.80	126.80	114.90	+	0.00	+
056 Silk & Reyon Fabrics	0.7350	178.38	178.09	148.72	+	0.16	+
057 Towels	0.1235	149.36	147.63	132.31	+	1.17	+
058 Blankets	0.0029	105.46	105.33	104.95	+	0.12	+
059 Bed Sheets	0.0913	127.92	127.92	122.05	+	0.00	+

Annexure C: Wholesale Price Indices by Major Groups & Commodities

(2015-16=100)

Item and Specification	Weight	Index Numbers			% Change in Jan 2022 over			
		Jan 22	Dec 21	Jan 21	Dec 2021	Jan 2021		
060 Quilts	0.0019	125.25	122.33	117.24	+	2.39	+	6.83
061 Woolen Carpets	0.0383	146.63	146.63	137.01	+	0.00	+	7.02
062 Synthetic Carpets	0.0566	125.11	125.11	116.17	+	0.00	+	7.70
063 Hosiery Products	0.8832	144.90	144.90	130.78	+	0.00	+	10.80
064 Readymade Garments	1.0576	141.38	141.38	137.99	+	0.00	+	2.46
Leather Products	0.7115	126.23	126.23	119.35	+	0.00	+	5.76
065 Leather Without Hair	0.2973	119.80	119.80	108.77	+	0.00	+	10.14
066 Other Leather N.E.C	0.2567	118.07	118.07	111.77	+	0.00	+	5.64
067 Footwear's	0.1575	151.69	151.69	151.69	+	0.00	+	0.00
Other Transportable Goods	22.3979	202.36	206.13	151.47	-	1.83	+	33.60
068 Timber	0.0165	164.93	163.17	152.83	+	1.08	+	7.92
069 Printing Paper	0.4279	130.70	130.70	130.70	+	0.00	+	0.00
070 Hard Board	0.1579	146.50	146.50	146.50	+	0.00	+	0.00
071 Motor Spirit	1.6268	206.38	201.98	151.61	+	2.18	+	36.13
072 Diesel Oil	5.4849	212.38	207.94	151.06	+	2.14	+	40.59
073 Kerosene Oil	0.2151	225.50	221.67	147.38	+	1.73	+	<u>53.01</u>
074 Furnace Oil	3.2664	340.72	383.05	236.50	-	11.05	+	44.07
075 Mobil Oil	0.7114	144.86	144.86	121.14	+	0.00	+	19.58
076 Chemicals	1.7720	204.03	196.73	141.23	+	3.71	+	44.47
077 Dyeing Material	0.1539	146.16	146.16	146.16	+	0.00	+	0.00
078 Fertilizers	2.8657	144.03	141.39	99.78	+	1.87	+	44.35
079 Pesticides	0.2763	146.51	146.51	141.99	+	0.00	+	3.18
080 Insecticides	0.1276	111.49	111.49	111.49	+	0.00	+	0.00
081 Paints & Varnishes	0.1916	154.17	154.17	135.82	+	0.00	+	13.51
082 Medicines	1.1428	162.79	161.83	146.31	+	0.59	+	11.26
083 Soaps & Detergents	0.8168	131.99	131.30	111.18	+	0.53	+	18.72
084 Auto Tyres	0.2703	149.76	149.76	125.48	+	0.00	+	19.35
085 Plastic Products	0.4550	125.26	125.15	117.76	+	0.09	+	6.37
086 Glass sheets	0.2089	150.58	149.94	147.24	+	0.43	+	2.27
087 Other Glass Articles	0.1635	158.06	158.06	149.95	+	0.00	+	5.41
088 Ceramics & Sanitary Fixture	0.0244	138.35	137.83	124.21	+	0.38	+	11.38
089 Bricks, Blocks & Tiles	0.1566	144.48	146.59	132.53	-	1.44	+	9.02
090 Cement	1.8145	148.36	148.67	123.08	-	0.21	+	20.54
091 Bed Foam	0.0006	198.56	198.34	149.96	+	0.11	+	32.41
092 Matches	0.0505	1201.5	1198.4	1171.7	+	0.26	+	2.54
Metal Product, Machinery & Eq	8.7156	181.56	180.93	156.32	+	0.35	+	16.15
093 Steel Bar & Sheets	1.4615	257.95	259.36	179.59	-	0.54	+	43.63
094 Pipe Fittings	0.0780	214.15	214.15	169.43	+	0.00	+	26.39
095 Steel Products	0.3879	141.04	140.76	134.24	+	0.20	+	5.07
096 Engines & Motors	0.0046	117.67	117.67	107.29	+	0.00	+	9.67
097 Vacuum Pumps	0.0155	107.56	107.56	107.56	+	0.00	+	0.00
098 Air Conditioners	0.0049	129.14	129.14	123.30	+	0.00	+	4.74
099 Cultivators	0.0551	174.49	174.49	103.75	+	0.00	+	<u>68.18</u>
100 Chuff Cutter	0.1293	185.71	128.57	110.00	+	44.44	+	<u>68.83</u>
101 Tractors	0.0028	146.62	146.62	129.36	+	0.00	+	13.34
102 Lathe Machines	0.0525	270.02	270.02	217.68	+	0.00	+	24.04
103 Concrete Mixture	0.0107	128.57	128.57	100.00	+	0.00	+	28.57
104 Fridge, WashM, SewM, Fans, Iron	1.1645	171.18	171.18	154.69	+	0.00	+	10.66
105 Electric Wires	0.0912	148.23	148.23	144.65	+	0.00	+	2.47
106 Lighting Equipments	1.4431	131.75	131.75	119.49	+	0.00	+	10.26
107 Radio & Television	0.1843	108.07	108.07	105.55	+	0.00	+	2.39
108 Motor Vehicles	0.0244	168.42	166.28	157.19	+	1.29	+	7.14
109 Motorcycles	0.2570	156.65	156.65	125.84	+	0.00	+	24.48
110 Bicycles	3.3483	183.45	183.45	172.55	+	0.00	+	6.32