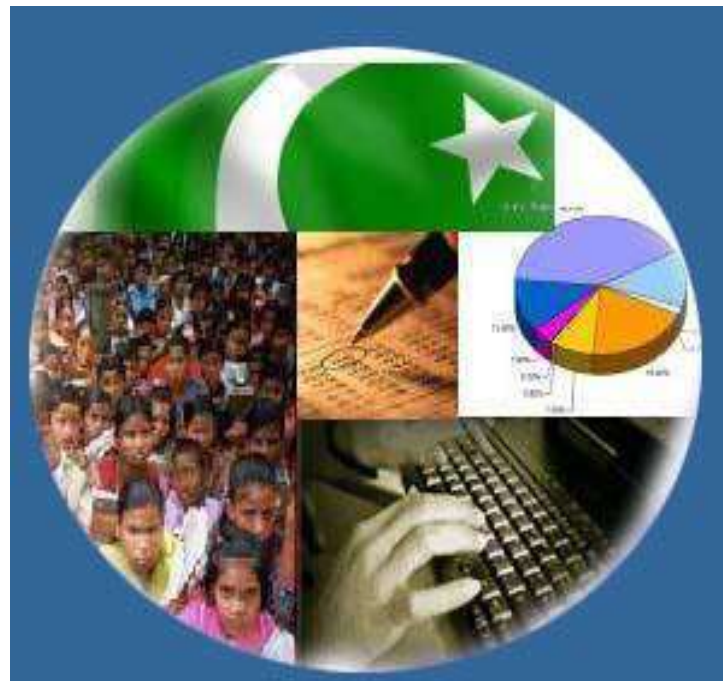




Monthly Review on Price Indices



March 2025
(Base Year 2015-16)

Government of Pakistan
Ministry of Planning, Development & Special Initiatives
Pakistan Bureau of Statistics
Islamabad

PRICE STATISTICS TEAM

S#	Name	Designation
1.	Dr. Naeem Uz Zafar (S.I)	Chief Statistician
2.	Dr. Bahrawar Jan	Deputy Director General
3.	Mr. Naseer Ahmad	Director
4.	Dr. Ahtasham Gul	Chief Statistical Officer
5.	Mr. Adnan Shams	Statistical Officer
6.	Mr. Kashif Ali	Statistical Officer
7.	Miss. Umaira Zareen	Statistical Officer
8.	Mr. Abdul Qadir	Statistical Officer
9.	Mrs. Safia Akram	Statistical Officer
10.	Mrs. Faiza Razzaq	Statistical Officer
11.	Mr. Umer Farooq	Statistical Assistant
12.	Mr. Ansar Mahmood	Statistical Assistant
13.	Mrs. Madiha Gulfraz	Statistical Assistant
14.	Mrs. Humail Fatima	Statistical Assistant
15.	Mr. Muhammad Asif	Statistical Assistant

IT & SOFTWARE TEAM

1.	Mr. Muhammad Sarwar Gondal (S.I)	Member (Support Services)
2.	Mr. Muhammad Ehtesham	Director (DP)
3.	Mrs. Sobia Munawar	Director (DP)
4.	Mr. Arsalan Bashir	Data Processing Officer
5.	Mr. Muhammad Kibria	Data Processing Officer

Inflation in Brief

- CPI inflation General**, decreased to 0.7% on year-on-year basis in March 2025 as compared to 1.5% of the previous month and 20.7% in March 2024. On month-on-month basis, it increased by 0.9% in March 2025 as compared to a decrease of 0.8% in the previous month and an increase of 1.7% in March 2024.
- CPI inflation Urban**, decreased to 1.2% on year-on-year basis in March 2025 as compared to 1.8% of the previous month and 21.9% in March 2024. On month-on-month basis, it increased by 0.8% in March 2025 as compared to a decrease of 0.7% in the previous and an increase of 1.4% in March 2024.
- CPI inflation Rural**, showing no change on year-on-year basis in March 2025 as compared to 1.1% of the previous month and 19.0% in March 2024. On month-on-month basis, it increased by 1.1% in March 2025 as compared to a decrease of 1.1% in the previous month and an increase of 2.1% in March 2024.
- SPI inflation** on YoY decreased to -2.3% in March 2025 as compared to -0.2% a month earlier and 25.9% in March 2024. On MoM basis, it decreased by 0.1% in March 2025 as compared to a decrease of 1.6% a month earlier and an increase of 2.1% in March 2024.
- WPI inflation** on YoY basis decreased by 1.6% in March 2025 as compare to a decrease 0.7% a month earlier and an increase of 14.8% in March 2024. On MoM basis, it increased by 0.3% in March 2025 as compared to a decrease of 0.2% in the previous month and an increase of 1.3% of the corresponding month of last year i.e. March 2024.
- Figures 1 and 2 show graphically the yearly data of Table 1.a for Urban and Rural CPI while Table 1.1 shows "Period Average" and "YoY" percentage changes in indices of last twenty-two months.

Table 1.a General Inflation (%) (Base 2015-16)																		
PERIOD	CPI														SPI**		WPI	
	General						Food				Non-Food							
	National		Urban		Rural		Urban		Rural		Urban		Rural		YoY	MoM	YoY	MoM
	YoY	MoM	YoY	MoM	YoY	MoM	YoY	MoM	YoY	MoM	YoY	MoM	YoY	MoM				
Jun-23	29.4	-0.3	27.3	0.1	32.4	-0.8	40.8	0.1	41.5	-1.6	18.7	0.1	23.8	0.1	34.9	0.2	22.4	-0.3
Jul-23	28.3	3.5	26.3	3.6	31.3	3.3	40.2	3.7	41.3	3.5	17.3	3.5	22.0	3.0	29.3	2.8	23.1	2.5
Aug-23	27.4	1.7	25.0	1.6	30.9	1.9	38.8	0.6	40.6	0.8	16.3	2.4	22.0	3.1	27.9	4.1	24.3	4.2
Sep-23	31.4	2.0	29.7	1.7	33.9	2.5	33.9	1.5	35.4	1.8	26.8	1.8	32.3	3.2	32.0	1.7	26.4	3.1
Oct-23	26.8	1.0	25.5	1.1	28.7	0.9	28.9	0.6	28.6	0.7	23.1	1.4	28.8	1.1	34.2	0.2	24.6	-1.9
Nov-23	29.2	2.7	30.4	4.3	27.5	0.4	29.8	0.8	29.2	1.0	30.9	7.0	25.9	-0.2	30.6	3.3	26.4	1.4
Dec-23	29.7	0.8	30.9	0.7	27.9	1.0	28.8	-0.7	29.3	0.1	32.4	1.8	26.4	1.8	35.3	3.8	27.3	0.0
Jan-24	28.3	1.8	30.2	1.8	25.7	1.9	27.4	2.8	25.1	2.3	32.3	1.1	26.3	1.4	36.2	2.0	27.0	1.5
Feb-24	23.1	0.0	24.9	0.2	20.5	-0.3	20.2	-1.5	19.0	-1.1	28.2	1.5	22.1	0.6	30.4	-0.8	18.7	1.1
Mar-24	20.7	1.7	21.9	1.4	19.0	2.1	16.6	2.4	17.1	2.8	25.8	0.7	21.0	1.4	25.9	2.1	14.8	1.3
Apr-24	17.3	-0.4	19.4	-0.1	14.5	-0.9	11.3	-1.3	9.5	-2.6	25.6	0.8	20.0	0.8	21.6	-0.7	13.9	-0.7
May-24	11.8	-3.2	14.3	-2.8	8.2	-3.9	2.2	-6.3	-0.1	-7.4	23.6	-0.4	17.2	-0.4	15.3	-4.0	9.9	-2.5
Jun-24	12.6	0.5	14.9	0.6	9.3	0.3	2.6	0.4	1.3	-0.2	24.3	0.7	17.9	0.8	16.6	1.3	10.6	0.4
July-24	11.1	2.1	13.2	2.0	8.1	2.2	3.4	4.5	1.3	3.6	20.7	0.5	15.5	0.9	15.7	2.0	10.4	2.3
Aug-24	9.6	0.4	11.7	0.3	6.7	0.6	4.1	1.3	1.9	1.3	17.4	-0.4	11.9	-0.2	10.8	-0.3	6.3	0.3
Sep-24	6.9	-0.5	9.3	-0.5	3.6	-0.5	1.7	-0.8	-0.9	-1.0	15.0	-0.3	8.4	-0.1	9.2	0.2	1.9	-1.1
Oct-24	7.2	1.2	9.3	1.1	4.2	1.5	2.7	1.6	0.6	2.2	14.2	0.7	8.0	0.8	9.7	0.6	3.9	0.0
Nov-24	4.9	0.5	5.2	0.5	4.3	0.5	1.7	-0.2	-0.2	0.2	7.8	1.0	9.1	0.8	7.3	1.0	2.3	-0.1
Dec-24	4.1	0.1	4.4	-0.1	3.6	0.3	2.5	0.1	-0.2	0.1	5.7	-0.2	7.6	0.5	4.2	0.8	1.9	-0.4
Jan-25	2.4	0.2	2.7	0.2	1.9	0.2	-0.6	-0.3	-2.9	-0.4	5.0	0.5	7.0	0.9	0.7	-1.4	0.6	0.2
Feb-25	1.5	-0.8	1.8	-0.7	1.1	-1.1	-0.9	-1.8	-4.3	-2.5	3.6	0.1	6.6	0.3	-0.2	-1.6	-0.7	-0.2
Mar-25	0.7	0.9	1.2	0.8	0.0	1.1	-1.7	1.6	-5.4	1.6	3.1	0.2	5.6	0.5	-2.3	-0.1	-1.6	0.3

** SPI for quintile 1. Digits 0.0* are due to rounding off.

Core inflation (NFNE)

7. Measured by **non-food non-energy Urban** increased by 8.2% on (YoY) basis in March 2025 as compared to 7.8% of the previous month and an increase of 12.8% in March 2024. On (MoM) basis, it increased by 0.5% in March 2025 as compared to 0.3% in previous month and an increase of 0.1% in corresponding month of last year i.e. March, 2024.
8. Measured by **non-food non-energy Rural** decreased to 10.2% on (YoY) basis in March 2025 as compared to 10.4% of the previous month and an increase of 20.0% in March 2024. On (MoM) basis, it increased by 0.7% in March 2025 as compared to an increase of 0.4% in previous month and an increase of 0.8% in corresponding month of last year i.e. March 2024.

Core inflation (Trimmed)

9. Measured by 20% **weighted trimmed mean Urban** increased by 4.8% on (YoY) basis in March 2025 as compared to 4.6% of the previous month and 14.8% in March 2024. On (MoM) basis, it increased by 0.3% in March 2025 as compared to an increase of 0.1% in the previous month and an increase of 0.6% in corresponding month of last year i.e. March 2024.
10. Measured by 20% **weighted trimmed mean Rural** decreased to 4.8% on (YoY) basis in March 2025 as compared to 5.2% of the previous month and 18.4% in March 2024. On (MoM) basis, it increased by 0.4% in March 2025 as compared an increase of 0.1% in the previous month and an increase of 0.9% in corresponding month of last year i.e. March 2024.

Table 1.b Core Inflation (%) (Base 2015-16)

Period	NFNE				Trimmed			
	Urban		Rural		Urban		Rural	
	YoY	MoM	YoY	MoM	YoY	MoM	YoY	MoM
Mar-24	12.8	0.1	20.0	0.8	14.8	0.6	18.4	0.9
Apr-24	13.1	2.1	19.3	2.0	13.4	0.5	15.0	0.6
May-24	12.3	0.4	17.0	0.5	11.0	-0.5	10.6	-0.9
June-24	12.2	0.6	17.0	0.9	10.3	0.6	11.0	0.5
July-24	11.7	0.7	16.9	1.1	10.3	1.2	11.3	1.7
Aug-24	10.2	0.4	14.4	0.6	8.0	0.2	9.6	0.4
Sep-24	9.3	0.2	12.1	0.5	7.1	-0.1	7.4	-0.1
Oct-24	8.6	0.6	11.7	0.7	6.4	0.7	7.2	1.0
Nov-24	8.9	1.2	10.9	0.7	7.5	0.6	7.8	0.5
Dec-24	8.1	0.2	10.7	0.6	6.2	0.1	6.5	0.6
Jan-25	7.8	0.8	10.4	0.9	5.4	0.6	5.4	0.7
Feb-25	7.8	0.3	10.4	0.4	4.6	0.1	5.2	0.1
Mar-25	8.2	0.5	10.2	0.7	4.8	0.3	4.8	0.4

Table 1.1 Period Average and Y-o-Y % Change

INDEX	Average July - March % Changes			March over March % Changes		
	2024-2025	2023-2024	2022-2023	2024-2025	2023-2024	2022-2023
CPI (National)	5.25	27.06	27.26	0.69	20.68	35.37
CPI (Urban)	6.35	27.13	25.04	1.16	21.90	32.97
CPI (Rural)	3.68	26.97	30.56	0.02	18.97	38.88
SPI	5.84	31.26	30.50	-2.31	25.86	40.44
WPI	2.68	23.43	34.15	-1.60	14.78	37.52

Figure 1: Urban Inflation - YoY, Special Indices

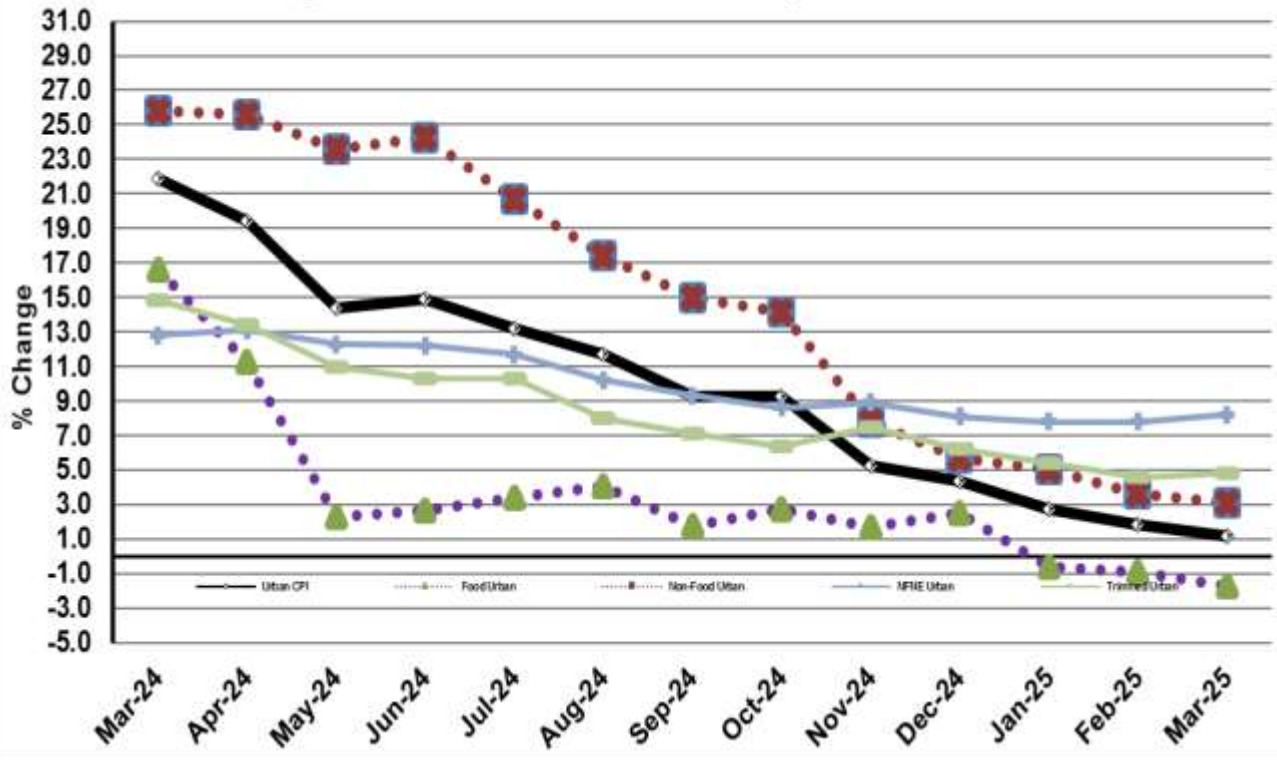


Figure 2: Rural Inflation - YoY, Special Indices

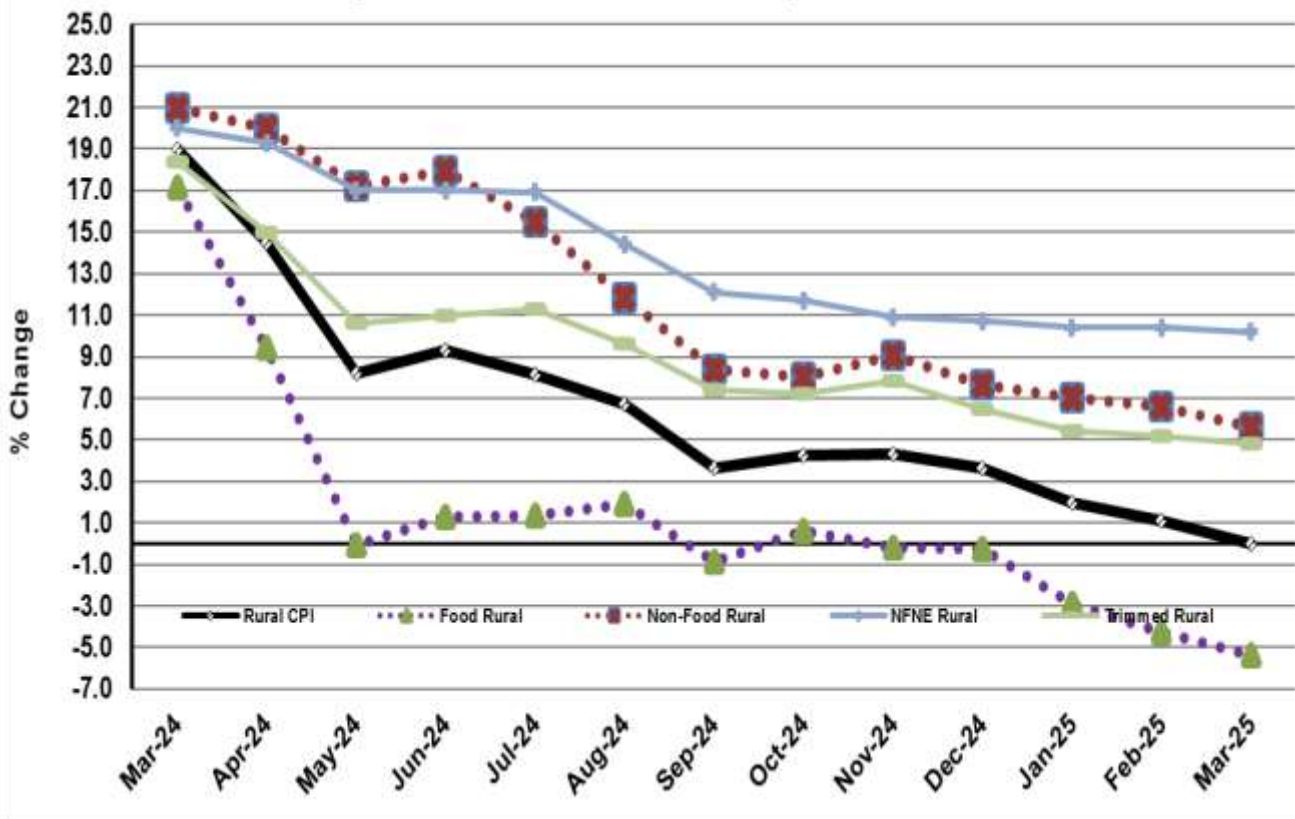


Figure 3: Urban Inflation - MoM, Special Indices

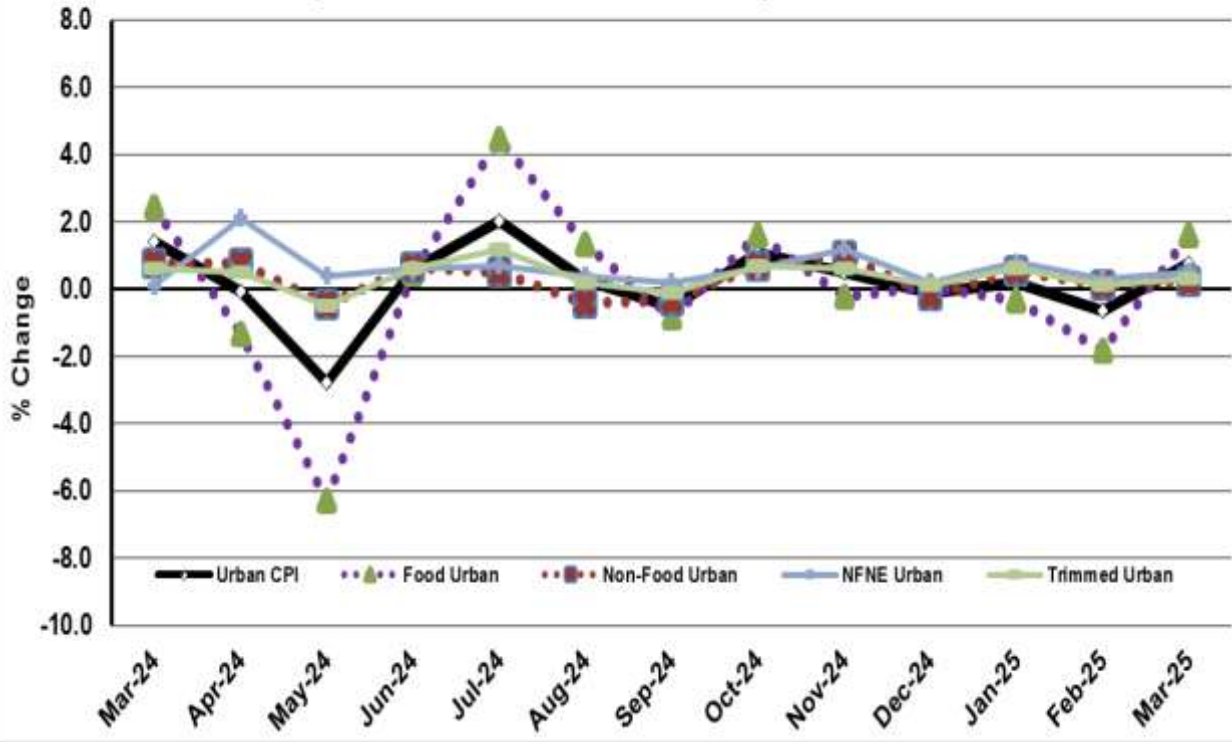
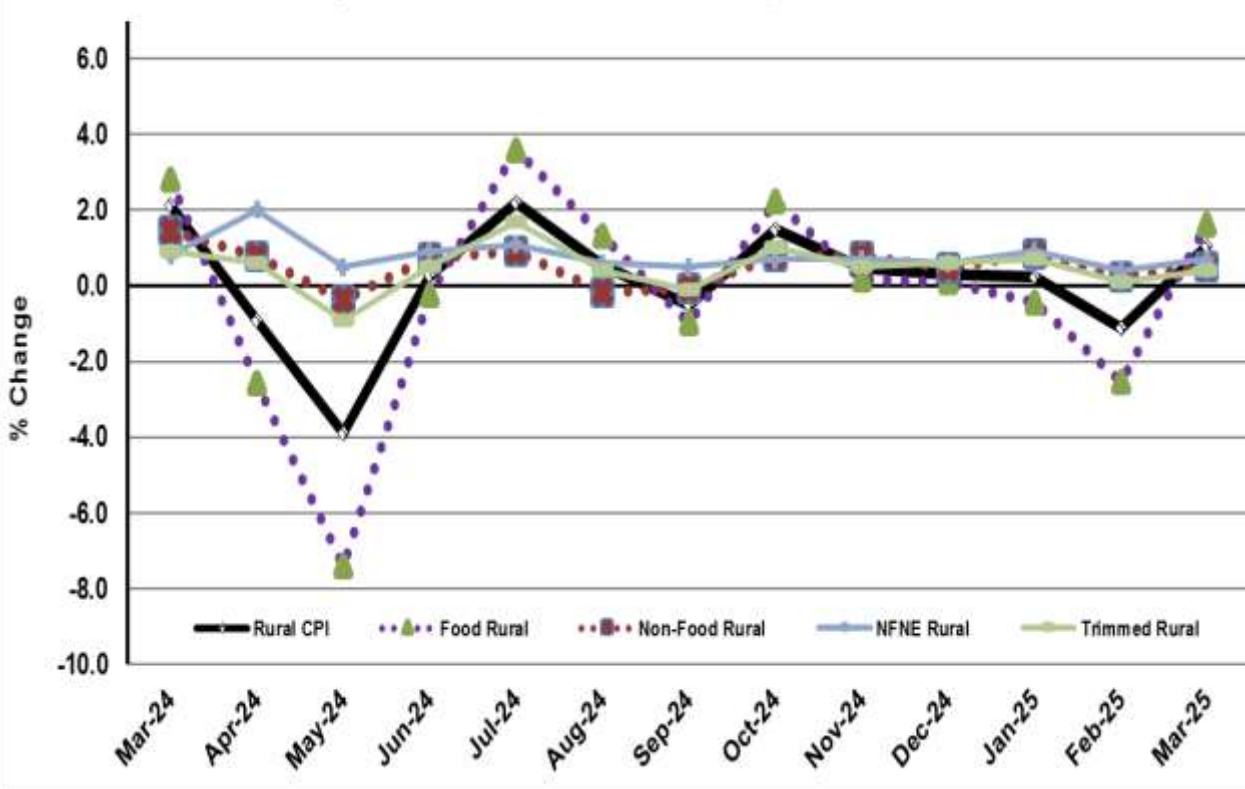
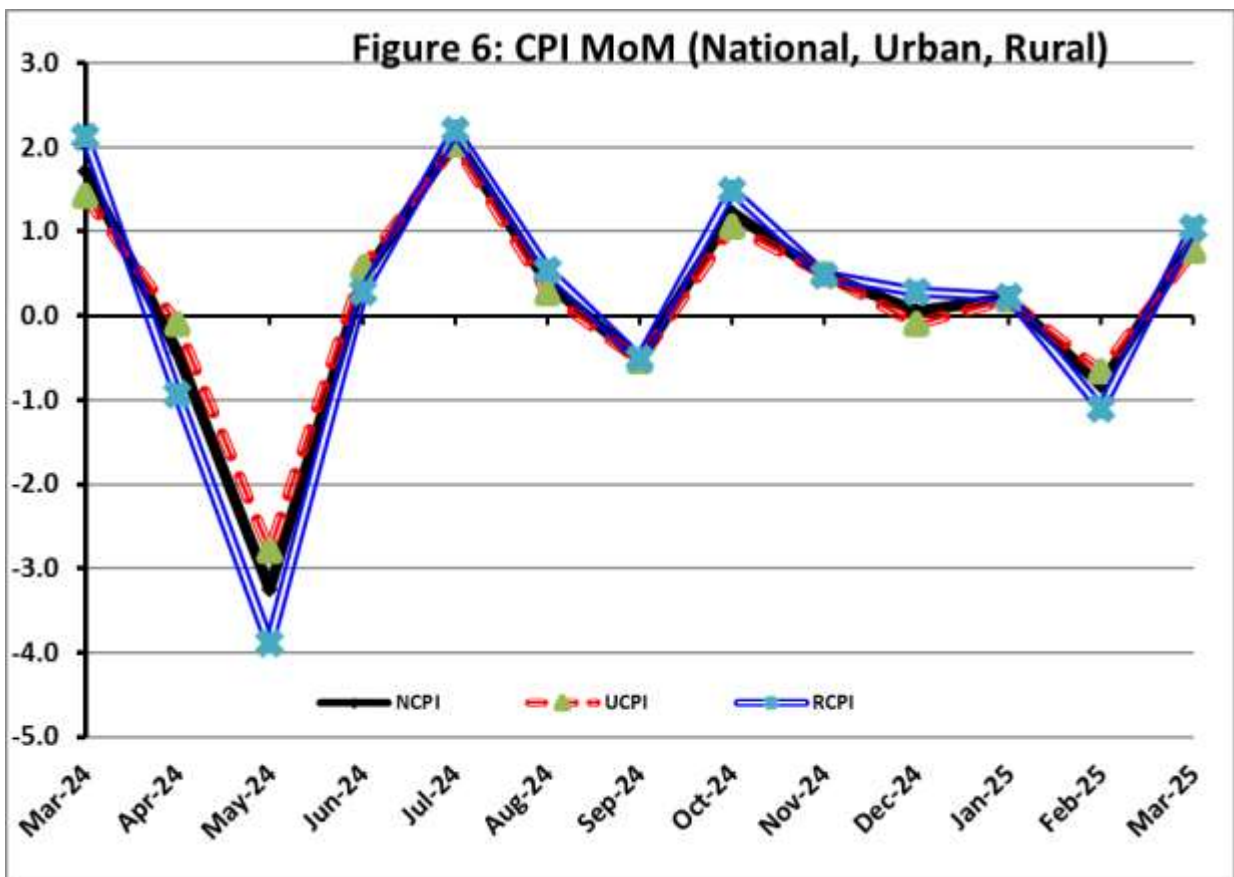
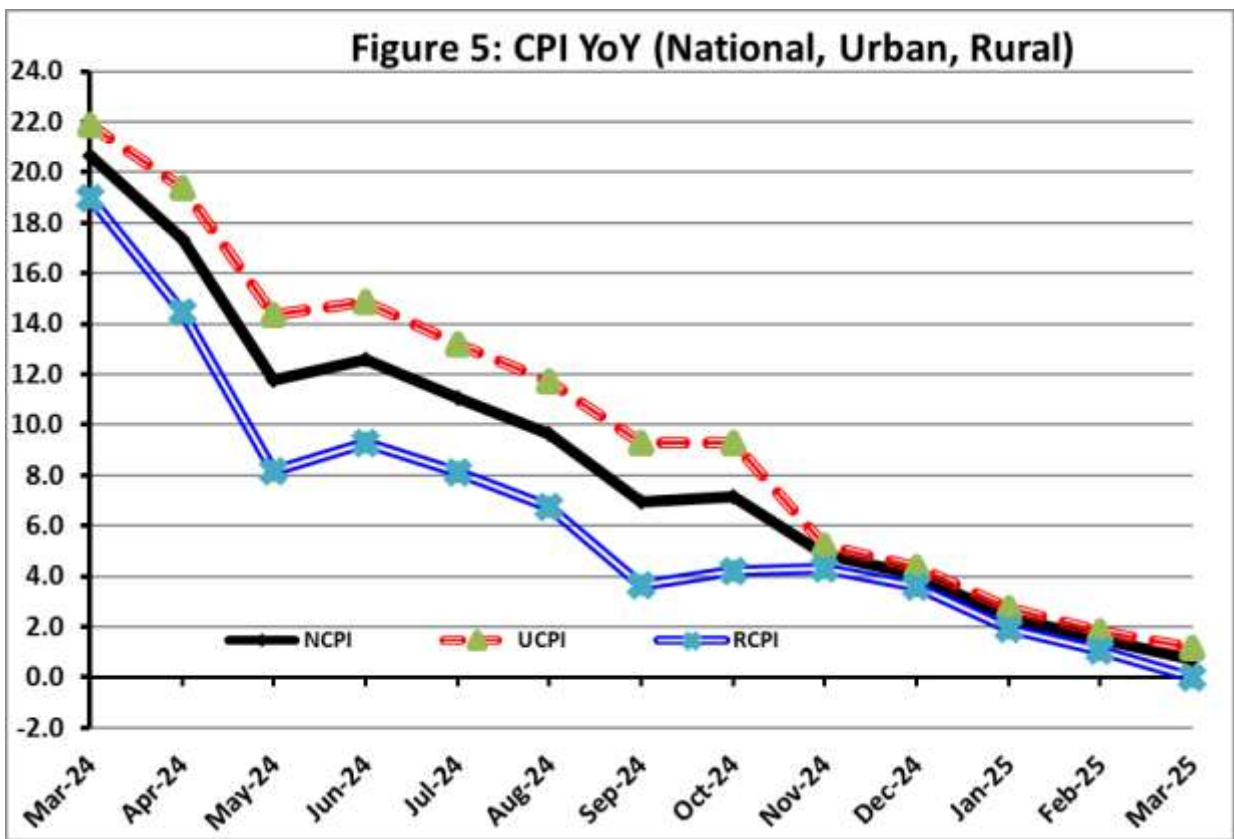


Figure 4: Rural Inflation - MoM, Special Indices





I. National Consumer Price Index (N-CPI)

The **National Consumer Price Index** for **March 2025** is increased by **0.89%** over **February 2025** and **0.69%** over corresponding month of the last year i.e. **March 2024**.

Table 1: Consumer Price Index (National) by Group of Commodities and Services (Base 2015-16)

No	Group	Group Weight (%)	Indices			% Change Mar 2025 Over		Impact (In % points) Mar 2025 Over	
			Mar 25	Feb 25	Mar 24	Feb 25	Mar 24	Feb 25	Mar 24
	General	100.00	266.29	263.95	264.46	0.89	0.69	0.89	0.69
1.	Food & Non-alcoholic Bev.	34.58	278.34	273.24	293.36	1.87	-5.12	0.67	-1.96
	<i>Non-perishable Food Items</i>	29.60	285.59	282.41	286.00	1.13	-0.14	0.36	-0.05
	<i>Perishable Food Items</i>	4.99	235.33	218.84	337.05	7.53	-30.18	0.31	-1.92
2.	Alcoholic Bev. & Tobacco	1.02	393.38	389.99	365.80	0.87	7.54	0.01	0.11
3.	Clothing & Footwear	8.60	258.98	255.41	228.13	1.40	13.53	0.12	1.00
4.	Housing, Water, Electricity, Gas & Fuels	23.63	238.95	239.26	244.24	-0.13	-2.17	-0.03	-0.47
5.	Furnishing & Household Equipment Maintenance	4.10	275.38	274.96	265.47	0.15	3.73	0.01	0.15
6.	Health	2.79	269.34	269.16	236.68	0.07	13.80	0.00	0.34
7.	Transport	5.91	307.71	308.55	311.46	-0.27	-1.20	-0.02	-0.08
8.	Communication	2.21	134.89	134.89	134.83	0.00	0.04	0.00	0.00
9.	Recreation & Culture	1.59	276.36	277.89	256.67	-0.55	7.67	-0.01	0.12
10.	Education	3.79	209.89	206.38	187.50	1.70	11.94	0.05	0.32
11.	Restaurants & Hotels	6.92	284.79	284.26	266.35	0.19	6.92	0.01	0.48
12.	Miscellaneous	4.87	313.93	309.92	276.81	1.29	13.41	0.07	0.68

II. Urban Consumer Price Index (UCPI)

The Urban Consumer Price Index for **March 2025** is increased by **0.78%** over **February 2025** and **1.16%** over corresponding month of the last year i.e. **March 2024**.

Table 2: Consumer Price Index (Urban) by Group of Commodities and Services (Base 2015-16)

No	Group	Group Weight (%)	Indices			% Change Mar 2025 Over		Impact (In % points) Mar 2025 Over	
			Mar 25	Feb 25	Mar 24	Feb 25	Mar 24	Feb 25	Mar 24
	General	100.00	262.48	260.46	259.47	0.78	1.16	0.78	1.16
1.	Food & Non-alcoholic Bev.	30.42	277.04	271.84	286.46	1.91	-3.29	0.61	-1.10
	<i>Non-perishable Food Items</i>	25.97	284.44	281.18	279.63	1.16	1.72	0.33	0.48
	<i>Perishable Food Items</i>	4.46	233.91	217.41	326.28	7.59	-28.31	0.28	-1.59
2.	Alcoholic Bev. & Tobacco	0.85	414.86	410.59	386.20	1.04	7.42	0.01	0.09
3.	Clothing & Footwear	8.01	249.74	246.69	216.67	1.24	15.26	0.09	1.02
4.	Housing, Water, Electricity, Gas & Fuels	27.03	244.31	244.76	250.13	-0.18	-2.33	-0.05	-0.61
5.	Furnishing & Household Equip. & Maintenance	4.09	264.94	264.72	256.37	0.08	3.34	0.00	0.14
6.	Health	2.31	271.71	271.35	236.76	0.13	14.76	0.00	0.31
7.	Transport	6.14	302.14	303.09	305.33	-0.31	-1.04	-0.02	-0.08
8.	Communication	2.35	138.38	138.38	138.77	0.00	-0.28	0.00	0.00
9.	Recreation & Culture	1.73	258.99	260.96	246.16	-0.75	5.21	-0.01	0.09
10.	Education	4.88	203.07	200.61	188.09	1.23	7.96	0.05	0.28
11.	Restaurants & Hotels	7.41	280.73	280.26	265.74	0.17	5.64	0.01	0.43
12.	Miscellaneous	4.77	304.14	299.81	271.71	1.44	11.94	0.08	0.60

Main contributors to month-on-month and year-on-year percentage changes are given below and detail is given in **Annexure-A**.

1. MONTH-ON-MONTH Top few commodities which varied from previous month i.e. February, 2025 are given below:

FOOD

Increased: Tomatoes (36.35%), Fresh Fruits (18.66%), Eggs (14.92%), Sugar (11.48%), Chicken (10.87%), Fresh Vegetables (6.13%), Condiments and Spices (2.79%), Butter (2.70%), Meat (1.60%) and Pulse Moong (0.70%).

decreased: Onions (14.89%), Tea (7.69%), Potatoes (6.83%), Besan (5.10%), Pulse Gram (4.62%), Pulse Mash (3.40%), Gram Whole (2.78%), Beans (2.59%), Fish (2.11%), Vegetable Ghee (1.59%), Wheat Flour (1.03%), Pulse Masoor (0.79%), Cooking Oil (0.73%), Rice (0.51%), Wheat Products (0.13%), Milk Products (0.09%) and Dry Fruits (0.09%).

NON-FOOD:

Increased: Readymade Garments (2.15%), Tailoring (1.84%), Liquified Hydrocarbons (1.83%), Cotton Cloth (1.74%), Accommodation Services (1.47%), Hosiry (1.33%), Education (1.23%) and Plastic Products (1.02%).

Decreased: Text Books (1.44%), Electricity Charges (1.27%), Transport Services (0.56%), Motor Fuel (0.35%), Stationery (0.17%) and Construcion Input Items (0.15%).

YEAR-ON-YEAR: Top few commodities which varied from corresponding month of previous year i.e. March, 2024 are given below:

FOOD

Increased: Pulse Moong (31.02%), Butter (23.84%), Besan (21.66%), Honey (21.02%), Milk Powder (20.63%), Pulse Gram (19.42%), Sugar (18.75%), Fresh Fruits (18.31%), Chicken (17.20%), Meat (15.87%), Vegetable Ghee (15.69%), Fish (13.42%), Mustard Oil (11.81%), Milk Fresh (11.20%) and Cooking Oil (11.08%).

Decreased: Onions (71.15%), Tomatoes (53.77%), Wheat (34.53%), Wheat Flour (34.52%), Fresh Vegetables (31.36%), Tea (17.13%), Pulse Mash (15.41%), Wheat Products (12.51%), Pulse Masoor (12.39%), Potatoes (7.40%) and Rice (5.75%).

NON-FOOD:

Increased: Motor Vehicle Tax (168.79%), Footwear (31.89%), Dental Services (27.20%), Medical Tests (15.53%) and Drugs & Medicines (15.26%).

Decreased: Electricity Charges (21.65%), Motor Fuel (7.01%), Liquified Hydrocarbons (3.77%), Communication Apparatus (1.28%) and Washing Soap/Detergents/Match Box (0.79%).

III. Rural Consumer Price Index (RCPI)

The Rural Consumer Price Index for March 2025 is increased by 1.05% over February 2025 and 0.02% over corresponding month of the last year i.e. March 2024.

Table 3: Consumer Price Index (Rural) by Group of Commodities and Services (Base 2015-16)

No	Group	Group Weight (%)	Indices			% Change Mar 2025 Over		Impact (In % points) Mar 2025 Over	
			Mar 25	Feb 25	Mar 24	Feb 25	Mar 24	Feb 25	Mar 24
	General	100.00	272.05	269.22	272.00	1.05	0.02	1.05	0.02
1.	Food & Non-alcoholic Bev.	40.87	279.81	274.82	301.11	1.82	-7.07	0.76	-3.20
	<i>Non-perishable Food Items</i>	<i>35.08</i>	<i>286.87</i>	<i>283.78</i>	<i>293.12</i>	<i>1.09</i>	<i>-2.13</i>	<i>0.40</i>	<i>-0.81</i>
	<i>Perishable Food Items</i>	<i>5.79</i>	<i>236.98</i>	<i>220.51</i>	<i>349.57</i>	<i>7.47</i>	<i>-32.21</i>	<i>0.35</i>	<i>-2.40</i>
2.	Alcoholic Bev. & Tobacco	1.28	371.72	369.21	345.24	0.68	7.67	0.01	0.12
3.	Clothing & Footwear	9.48	270.77	266.53	242.74	1.59	11.55	0.15	0.98
4.	Housing, Water, Electricity, Gas & Fuels	18.49	227.13	227.13	231.25	0.00	-1.78	0.00	-0.28
5.	Furnishing & Household Equip. & Maintenance	4.10	291.09	290.37	279.16	0.25	4.27	0.01	0.18
6.	Health	3.51	266.98	266.98	236.60	0.00	12.84	0.00	0.39
7.	Transport	5.56	317.00	317.65	321.67	-0.20	-1.45	-0.01	-0.10
8.	Communication	1.99	128.68	128.68	127.82	0.00	0.67	0.00	0.01
9.	Recreation & Culture	1.38	309.31	310.02	276.61	-0.23	11.82	0.00	0.17
10.	Education	2.13	233.45	226.30	185.46	3.16	25.88	0.06	0.38
11.	Restaurants & Hotels	6.19	292.11	291.47	267.45	0.22	9.22	0.01	0.56
12.	Miscellaneous	5.02	327.98	324.44	284.12	1.09	15.44	0.07	0.81

Main contributors to Month-on-Month and Year-on-Year percentage changes are given below and detail is given in **Annexure-B**.

1. MONTH-ON-MONTH Top few commodities which varied from previous month i.e. February, 2025 are given below:

FOOD

Increased: Fresh Fruits (24.62%), Tomatoes (22.11%), Chicken (15.40%), Eggs (14.32%), Sugar (11.31%), Fresh Vegetables (6.34%), Meat (2.92%), Wheat (1.50%), Honey (1.39%) and Beverages (0.86%).

Decreased: Onions (18.09%), Tea (10.01%), Pulse Gram (8.29%), Besan (8.04%), Pulse Mash (4.96%), Gram Whole (2.94%), Fish (2.88%), Potatoes (1.76%), Pulse Masoor (1.38%), Wheat Products (1.18%), Pulse Moong (1.04%), Condiments and Spices (0.72%), Beans (0.59%), Vegetable Ghee (0.47%) and Wheat Flour (0.46%).

NON-FOOD

Increased: Tailoring (5.13%), Education (3.16%), Readymade Garments (2.97%), Liquefied Hydrocarbons (2.53%), Cotton Cloth (1.56%), Footwear (0.95%), Medical Tests (0.83%) and Construction Wage Rates (0.63%).

Decreased: Electricity Charges (1.27%), Text Books (0.91%), Woolen Cloth (0.89%), Cleaning and Laundering (0.6%), Construction Input Items (0.57%), Motor Fuels (0.38%) and Drugs & Medicines (0.15%).

YEAR-ON-YEAR: Top few commodities which varied from corresponding month of previous year i.e. March, 2024 are given below:

FOOD

Increased: Pulse Moong (29.40%), Milk Powder (26.72%), Besan (21.35%), Meat (21.17%), Honey (19.97%), Pulse Gram (19.94%), Fresh Fruits (19.15%), Sugar (18.55%), Chicken (16.76%), Butter (16.36%), Vegetable Ghee (15.92%) and Cooking Oil (14.69%).

Decreased: Onions (71.13%), Tomatoes (56.33%), Wheat Flour (36.38%), Wheat (34.83%), Fresh Vegetables (34.25%), Tea (15.38%), Wheat Products (15.14%), Pulse Mash (13.39%), Pulse Masoor (7.72%), Potatoes (6.39%) and Rice (5.69%).

NON-FOOD

Increased: Motor Vehicle Tax (126.61%), Education (25.88%), Dental Services (19.53%), Drugs and Medicines (17.23%), Recreation and Culture (16.43%), Cotton Cloth (13.69%), Tailoring (12.71%), Plastic Products (12.47%) and Stationery (12.34%).

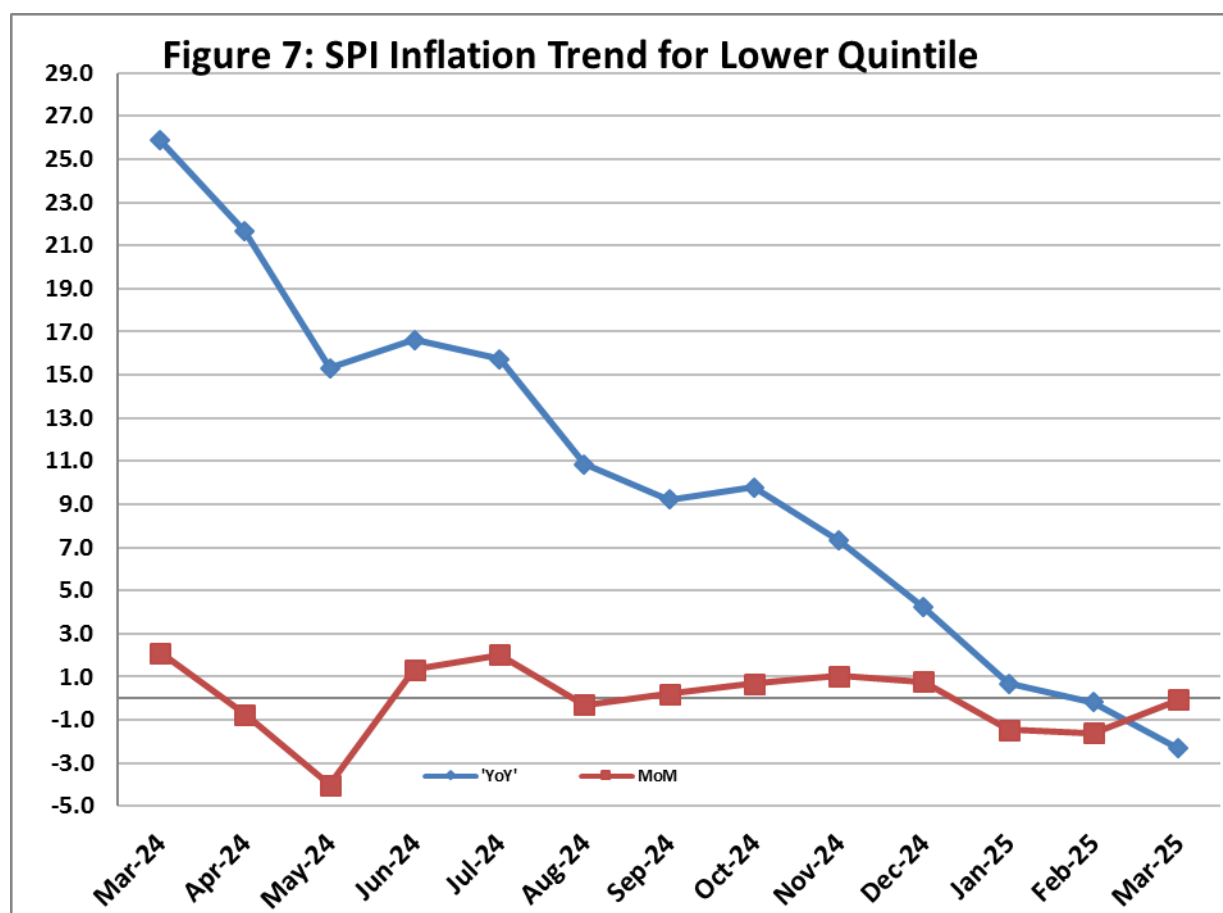
Decreased: Electricity Charges (21.65%), Motor Fuels (7.71%), Liquefied Hydrocarbons (4.79%) and Washing Soaps, Detergents and Match Box (0.65%).

IV. Sensitive Price Indicator

Quintile-wise percentage changes YoY and MoM are given below in Table 4. The series from March 2024 to March 2025 is also graphed below in Figure 7.

Table 4: Sensitive Price Indicator (Base 2015-16)					
Quintiles	Indices			% Change Mar 2025 Over	
	Mar 25	Feb 25	Mar 24	Feb 25	Mar 24
1	308.72	308.94	316.02	-0.07	-2.31
2	306.82	306.66	314.50	0.05	-2.44
3	329.72	329.37	336.05	0.11	-1.88
4	319.46	318.68	323.50	0.24	-1.25
5	321.34	320.29	322.80	0.33	-0.45
Combined	319.83	318.97	324.06	0.27	-1.31

Table 4.1: Weekly Percentage Change of SPI During February 2025				
Quintiles	% Change over Previous week			
	06-03-2025	13-03-2025	20-03-2025	27-03-2025
Quintile 1	-0.20	0.10	-0.39	-0.21
Combined	-0.09	0.22	-0.35	-0.15



V. Wholesale Price Index

The Wholesale Price Index for **March, 2025** is increased by **0.29%** over **February 2025**. It decreased by **1.60%** over the corresponding month of the last year i.e. **March, 2024**. YoY and MoM movements, from March, 2024 to March, 2025 are also graphed below in Figure 8.

Table 5: Wholesale Price Index by Group of Commodities (Base 2015-16)

No	Group	Group Weight (%)	Indices			% Change Mar 2025 Over		Impact (In % points) Mar 2025 Over	
			Mar 25	Feb 25	Mar 24	Feb 25	Mar 24	Feb 25	Mar 24
	General	100.00	312.85	311.94	317.95	0.29	-1.60	0.29	-1.60
1	Agriculture Forestry & Fishery	25.77	280.94	276.43	299.87	1.63	-6.31	0.37	-1.53
2	Ores/Minerals, Elec., Gas & Water	12.01	353.52	359.16	387.71	-1.57	-8.82	-0.22	-1.29
3	Food, Beverages, Tobacco, Textiles & Leather Products	31.11	282.50	279.35	263.95	1.13	7.03	0.31	1.82
	i. Food Products, Beverages & Tobacco	20.07	299.83	295.70	279.03	1.40	7.45	0.27	1.31
	ii. Textiles & Apparels	10.33	256.00	254.82	240.03	0.46	6.65	0.04	0.52
	iii. Leather Products	0.71	178.56	174.41	185.68	2.38	-3.83	0.01	-0.02
4	Other Transportable Goods	22.40	340.78	342.96	351.98	-0.64	-3.18	-0.16	-0.79
5	Metal Product, Machinery & Equipment	8.72	387.74	388.47	380.58	-0.19	1.88	-0.02	0.20

Main contributors to month-on-month and year-on-year percentage changes are given below and detail is given in **Annexure-C**.

1. **MONTH-ON-MONTH:** Top few commodities which varied from previous month are given below:

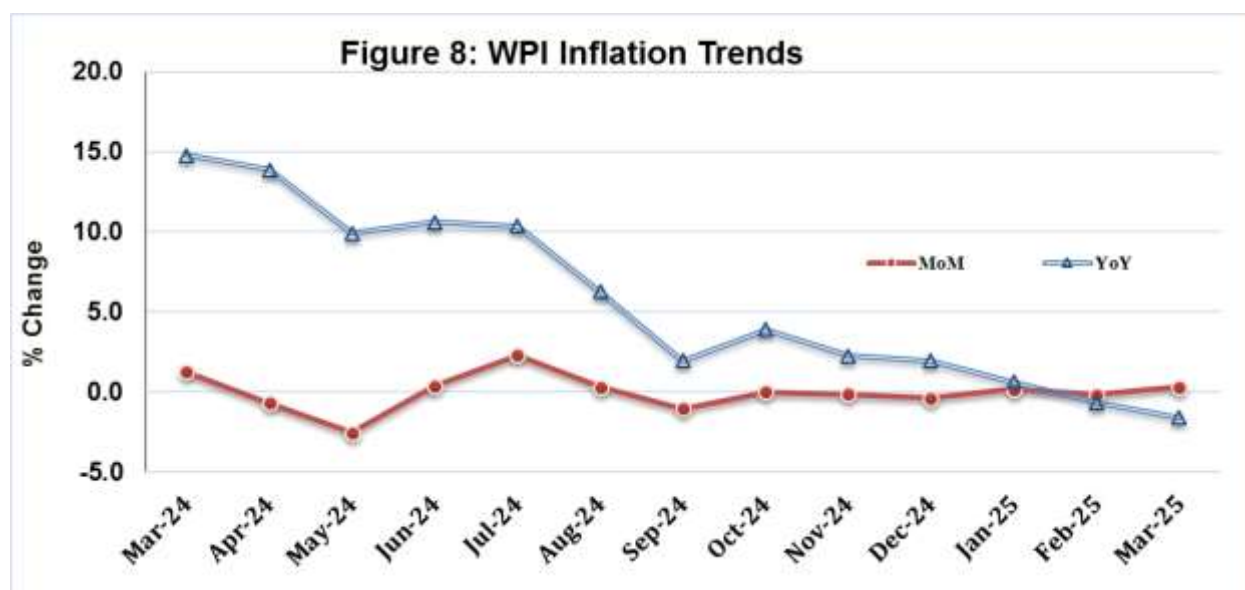
Increased: Fresh Fruits (24.52%), Other Food Products (14.74%), Poultry (14.07%), Eggs (11.91%), Sugar Refined (10.84%), Tobacco Products (7.37%), Millet / Bajra (7.29%), Sugar Crops (6.74%), Sorghum / Jowar (3.68%), Cultivators (2.93%), Fruit Juices (2.17%) and Hosiery Products (2.09%).

Decreased: Edible Roots / Potatoes (9.93%), Other Cereal Flour (6.57%), Electrical Energy (4.00%), Coffee & Tea (3.71%), Fibre Crops (3.10%), Diesel Oil (3.03%), Kerosene Oil (2.96%), Vegetables (2.95%), Pulses (2.80%), Cement (2.57%), Other Oil Seeds (2.35%), Maize (1.92%), Steel Bar & Sheets (1.50%), Rice (0.74%), Vegetable Ghee (0.65%), Stimulant & Spice Crops (0.59%) and Fish Live Fresh or Chilled (0.50%).

YEAR-ON-YEAR: Top few commodities which varied from previous year are given below:

Increased: Sugar Confectionary (32.79%), Millet / Bajra (30.77%), Processed Liquid Milk (25.31%), Electric Wires (25.20%), Hard Board (25.00%), Other Food Products (23.95%), Dyeing Material (23.72%), Other Fabrics (21.89%), Fresh Fruits (21.48%) and Poultry (21.38%).

Decreased: Vegetables (53.23%), Wheat (36.14%), Wheat Flour (34.85%), Electrical Energy (20.41%), Stimulant & Spice Crops (20.38%), Fibre Crops (19.82%), Spices (18.72%), Edible Roots / Potatoes (18.17%) and Kerosene Oil (11.21%).



Annexure A: CPI (Urban) Index Numbers by Commodity Groups & Commodities (2015-16=100)

Item and Specification	Weight	Index Numbers			% Change in Mar 2025 over	
		Mar 25	Feb 25	Mar 24	Feb 2025	Mar 2024
General	100.0000	262.48	260.46	259.47	+ 0.78	+ 1.16
Food and non-alcoholic Beverage	30.4215	277.04	271.84	286.46	+ 1.91	- 3.29
01 Wheat	0.6120	233.62	232.61	356.85	+ 0.43	- 34.53
02 Wheat flour	3.0075	230.33	232.72	351.77	- 1.03	- 34.52
03 Wheat products	0.0936	285.06	285.42	325.81	- 0.13	- 12.51
04 Besan	0.0830	264.73	278.97	217.59	- 5.10	+ 21.66
05 Rice	1.1804	310.05	311.63	328.95	- 0.51	- 5.75
06 Bakery and confectionary	0.4770	265.44	267.82	266.52	- 0.89	- 0.41
07 Nimco	0.1224	298.32	295.66	285.10	+ 0.90	+ 4.64
08 Meat	2.0411	333.93	328.66	288.20	+ 1.60	+ 15.87
09 Chicken	1.3631	345.76	311.85	295.01	+ 10.87	+ 17.20
10 Fish	0.3855	214.24	218.86	188.89	- 2.11	+ 13.42
11 Milk fresh	7.1070	263.01	262.54	236.51	+ 0.18	+ 11.20
12 Milk products	0.6407	265.27	265.51	244.77	- 0.09	+ 8.38
13 Milk powder	0.3106	303.55	303.45	251.64	+ 0.03	+ 20.63
14 Eggs	0.5083	333.99	290.64	311.74	+ 14.92	+ 7.14
15 Butter	0.0932	435.93	424.47	352.02	+ 2.70	+ 23.84
16 Mustard oil	0.0120	319.90	320.88	286.10	- 0.31	+ 11.81
17 Cooking oil	1.1016	331.14	333.57	298.11	- 0.73	+ 11.08
18 Vegetable ghee	1.0324	349.44	355.08	302.05	- 1.59	+ 15.69
19 Dry fruits	0.3299	296.97	297.23	281.90	- 0.09	+ 5.35
20 Fresh fruits	1.4363	295.45	248.99	249.72	+ 18.66	+ 18.31
21 Pulse masoor	0.1624	202.09	203.70	230.68	- 0.79	- 12.39
22 Pulse moong	0.1697	247.56	245.84	188.95	+ 0.70	+ 31.02
23 Pulse mash	0.1152	196.04	202.93	231.75	- 3.40	- 15.41
24 Pulse gram	0.1660	256.39	268.81	214.70	- 4.62	+ 19.42
25 Gram whole	0.0912	285.02	293.18	264.20	- 2.78	+ 7.88
26 Beans	0.0408	379.53	389.63	350.16	- 2.59	+ 8.39
27 Potatoes	0.4496	264.00	283.34	285.11	- 6.83	- 7.40
28 Onions	0.5928	171.31	201.29	593.72	- 14.89	- <u>71.15</u>
29 Tomatoes	0.3459	162.30	119.03	351.06	+ 36.35	- <u>53.77</u>
30 Fresh vegetables	1.5306	203.90	192.12	297.07	+ 6.13	- 31.36
31 Sugar	1.1130	275.23	246.88	231.78	+ 11.48	+ 18.75
32 Gur	0.0379	244.27	243.68	234.11	+ 0.24	+ 4.34
33 Honey	0.1017	220.90	220.17	182.53	+ 0.33	+ 21.02
34 Sweetmeat	0.3535	324.52	322.98	293.74	+ 0.48	+ 10.48
35 Ice cream	0.1044	199.45	199.45	198.48	+ 0.00	+ 0.49
36 Condiments and Spices	1.3340	349.39	339.91	320.44	+ 2.79	+ 9.03
37 Dessert preparation	0.0419	272.19	270.14	264.44	+ 0.76	+ 2.93
38 Tea	0.8427	276.33	299.35	333.43	- 7.69	- 17.13
39 Beverages	0.8906	257.84	256.80	244.57	+ 0.40	+ 5.43
Alcoholic Beverages, Tobacco	0.8540	414.86	410.59	386.20	+ 1.04	+ 7.42
40 Cigarettes	0.7167	407.84	402.86	384.62	+ 1.24	+ 6.04
41 Pan prepared	0.1373	451.52	450.94	394.44	+ 0.13	+ 14.47
Clothing and footwear	8.0096	249.74	246.69	216.67	+ 1.24	+ 15.26
42 Cotton cloth	2.2227	286.41	281.50	248.80	+ 1.74	+ 15.12
43 Woolen cloth	0.8361	238.44	237.12	215.69	+ 0.56	+ 10.55
44 Readymade garments	1.3196	217.20	212.63	198.36	+ 2.15	+ 9.50
45 Woolen readymade garments	0.4307	257.23	257.23	230.68	+ 0.00	+ 11.51
46 Tailoring	1.0741	234.07	229.85	215.73	+ 1.84	+ 8.50
47 Hosiery	0.4070	237.73	234.60	206.99	+ 1.33	+ 14.85
48 Dopatta	0.1713	203.87	200.63	178.53	+ 1.61	+ 14.19
49 Cleaning and laundering	0.0665	266.43	266.32	252.50	+ 0.04	+ 5.52
50 Footwear	1.4816	247.14	247.12	187.39	+ 0.01	+ 31.89
Housing, water, Elec., Gas and Fuels	27.0332	244.31	244.76	250.13	- 0.18	- 2.33
51 House rent	19.2558	168.09	168.09	160.17	+ 0.00	+ 4.94
52 Construction input items	0.3765	263.38	263.77	259.24	- 0.15	+ 1.60
53 Construction wage rates	0.2025	224.08	223.20	213.53	+ 0.39	+ 4.94
54 Water supply	0.5269	228.99	228.99	199.06	+ 0.00	+ 15.04
55 Garbage collection	0.1064	262.68	262.24	246.85	+ 0.17	+ 6.41
56 Electricity charges	4.5562	266.13	269.56	339.66	- 1.27	- 21.65
57 Gas charges	1.0807	1479.08	1479.08	1479.08	+ 0.00	+ 0.00
58 Liquefied Hydrocarbons	0.5064	330.32	324.38	343.26	+ 1.83	- 3.77

Annexure A: CPI (Urban) Index Numbers by Commodity Groups & Commodities (2015-16=100)

Item and Specification	Weight	Index Numbers			% Change in Mar 2025 over	
		Mar 25	Feb 25	Mar 24	Feb 2025	Mar 2024
59 Solid Fuel	0.4218	228.41	227.94	203.06	+ 0.21	+ 12.48
<i>Furnishing and household equipments</i>	4.0937	264.94	264.72	256.37	+ 0.08	+ 3.34
60 Furniture and furnishing	0.4750	258.89	258.02	243.45	+ 0.34	+ 6.34
61 Carpets	0.0308	150.80	150.80	148.03	+ 0.00	+ 1.87
62 Household textiles	0.3420	208.79	208.77	182.73	+ 0.01	+ 14.26
63 Household equipments	1.0032	265.51	265.44	251.94	+ 0.03	+ 5.39
64 Plastic products	0.0536	222.91	220.66	205.44	+ 1.02	+ 8.50
65 Major tools & equipments	0.0084	242.00	241.46	222.76	+ 0.22	+ 8.64
66 Washing soap/detergents/match	1.4112	319.91	319.78	322.47	+ 0.04	- 0.79
67 Household servant	0.7695	199.81	199.69	189.91	+ 0.06	+ 5.21
<i>Health</i>	2.3098	271.71	271.35	236.76	+ 0.13	+ 14.76
68 Drugs and medicines	1.0735	292.70	292.45	253.95	+ 0.09	+ 15.26
69 Therapeutic Appliances and Equipment	0.0054	154.81	154.81	147.55	+ 0.00	+ 4.92
70 Doctor (MBBS) clinic fee	0.4044	337.27	336.38	293.79	+ 0.26	+ 14.80
71 Dental services	0.0156	225.18	223.27	177.03	+ 0.86	+ 27.20
72 Medical tests	0.2367	213.60	213.10	184.89	+ 0.23	+ 15.53
73 Hospitals services	0.5742	212.62	212.51	188.30	+ 0.05	+ 12.92
<i>Transport</i>	6.1368	302.14	303.09	305.33	- 0.31	- 1.04
74 Motor vehicles	0.8097	259.38	259.34	255.69	+ 0.02	+ 1.44
75 Motor vehicle accessories	0.1941	265.06	264.18	252.48	+ 0.33	+ 4.98
76 Motor fuel	2.9088	349.70	350.94	376.07	- 0.35	- 7.01
77 Mechanical services	0.4290	233.29	233.04	219.88	+ 0.11	+ 6.10
78 Motor vehicle tax	0.0482	399.23	399.23	148.53	+ 0.00	+ 168.79
79 Transport services	1.7470	261.11	262.57	241.73	- 0.56	+ 8.02
<i>Communication</i>	2.3536	138.38	138.38	138.77	+ 0.00	- 0.28
80 Postal services	0.0190	217.79	217.79	207.37	+ 0.00	+ 5.02
81 Communication apparatus	0.4524	188.43	188.43	190.87	+ 0.00	- 1.28
82 Communication Services	1.8822	125.55	125.55	125.55	+ 0.00	+ 0.00
<i>Recreation and culture</i>	1.7301	258.99	260.96	246.16	- 0.75	+ 5.21
83 Recreation and culture	0.6478	154.84	154.84	148.85	+ 0.00	+ 4.02
84 Text books	0.6655	329.07	333.89	314.48	- 1.44	+ 4.64
85 Newspapers	0.0716	216.94	216.94	211.87	+ 0.00	+ 2.39
86 stationery	0.3452	328.06	328.63	304.15	- 0.17	+ 7.86
<i>Education</i>	4.8807	203.07	200.61	188.09	+ 1.23	+ 7.96
87 Education	4.8807	203.07	200.61	188.09	+ 1.23	+ 7.96
<i>Restaurants and hotels</i>	7.4050	280.73	280.26	265.74	+ 0.17	+ 5.64
88 Readymade food	5.5235	288.41	287.84	273.29	+ 0.20	+ 5.53
89 Marriage Hall Charges	1.7514	263.95	263.95	249.33	+ 0.00	+ 5.86
90 Accommodation Services	0.1301	180.92	178.30	166.21	+ 1.47	+ 8.85
<i>Misc. goods and services</i>	4.7720	304.14	299.81	271.71	+ 1.44	+ 11.94
91 Personal Grooming Services	0.8001	259.17	257.13	239.46	+ 0.79	+ 8.23
92 Electrical Appliances for Per	0.0465	177.90	177.43	161.72	+ 0.26	+ 10.00
93 Appliances/Articles/Products	2.9807	275.56	272.16	257.89	+ 1.25	+ 6.85
94 Personal Effects n.e.c.	0.9447	438.64	429.18	348.03	+ 2.20	+ 26.04

Annexure B: CPI (Rural) Index Numbers by Commodity Groups & Commodities (2015-16=100)

Item and Specification	Weight	Index Numbers			% Change in Mar 2025 over			
		Mar 25	Feb 25	Mar 24	Feb 2025	Mar 2024		
General	100.0000	272.05	269.22	272.00	+	1.05	+	0.02
Food and non-alcoholic Beverage	40.8668	279.81	274.82	301.11	+	1.82	-	7.07
01 Wheat	3.4736	239.50	235.97	367.50	+	1.50	-	34.83
02 Wheat Flour	3.4297	231.99	233.07	364.64	-	0.46	-	36.38
03 Wheat Products	0.1068	283.42	286.80	333.97	-	1.18	-	15.14
04 Besan	0.0728	282.35	307.05	232.68	-	8.04	+	21.35
05 Rice	1.5501	411.75	412.76	436.61	-	0.24	-	5.69
06 Bakery and Confectionary	0.3702	308.32	306.90	307.88	+	0.46	+	0.14
07 Nimco	0.0774	302.00	306.34	296.53	-	1.42	+	1.84
08 Meat	1.7146	352.34	342.34	290.77	+	2.92	+	21.17
09 Chicken	1.4641	365.12	316.40	312.71	+	15.40	+	16.76
10 Fish	0.2640	230.79	237.64	206.94	-	2.88	+	11.53
11 Milk fresh	10.3803	259.86	260.55	237.02	-	0.26	+	9.64
12 Milk products	0.9624	256.54	257.19	241.11	-	0.25	+	6.40
13 Milk powder	0.1062	276.89	275.97	218.50	+	0.33	+	26.72
14 Eggs	0.5665	321.67	281.38	300.78	+	14.32	+	6.95
15 Butter	0.3333	306.65	307.05	263.54	-	0.13	+	16.36
16 Mustard oil	0.0136	338.75	339.07	304.20	-	0.09	+	11.36
17 Cooking oil	0.6011	370.68	369.81	323.20	+	0.24	+	14.69
18 Vegetable ghee	2.3764	380.91	382.72	328.60	-	0.47	+	15.92
19 Dry fruits	0.2496	360.80	361.53	322.46	-	0.20	+	11.89
20 Fresh fruits	1.4505	316.98	254.35	266.03	+	24.62	+	19.15
21 Pulse Masoor	0.2076	225.45	228.61	244.31	-	1.38	-	7.72
22 Pulse Moong	0.2510	265.50	268.28	205.17	-	1.04	+	29.40
23 Pulse Mash	0.1465	205.85	216.60	237.67	-	4.96	-	13.39
24 Pulse Gram	0.2751	260.82	284.39	217.45	-	8.29	+	19.94
25 Gram Whole	0.1116	299.78	308.86	276.61	-	2.94	+	8.38
26 Beans	0.0896	407.69	410.10	381.90	-	0.59	+	6.75
27 Potatoes	0.7437	278.25	283.23	297.25	-	1.76	-	6.39
28 Onions	0.8965	166.09	202.78	575.32	-	18.09	-	71.13
29 Tomatoes	0.5069	152.47	124.86	349.18	+	22.11	-	56.33
30 Fresh Vegetables	2.0947	214.73	201.93	326.58	+	6.34	-	34.25
31 Sugar	2.0296	276.21	248.15	233.00	+	11.31	+	18.55
32 Gur	0.1522	239.22	237.61	237.89	+	0.68	+	0.56
33 Honey	0.0296	226.54	223.43	188.83	+	1.39	+	19.97
34 Sweetmeat	0.3967	292.08	288.78	276.27	+	1.14	+	5.72
35 Ice Cream	0.0568	199.34	199.34	197.95	+	0.00	+	0.70
36 Condiments and Spices	1.4919	295.57	297.71	286.78	-	0.72	+	3.07
37 Dessert Preparation	0.0133	268.52	268.52	268.52	+	0.00	+	0.00
38 Tea	1.2566	285.79	317.58	337.75	-	10.01	-	15.38
39 Beverages	0.5537	248.40	246.29	235.14	+	0.86	+	5.64
Alcoholic Beverages, Tobacco	1.2786	371.72	369.21	345.24	+	0.68	+	7.67
40 Cigarettes	1.2364	372.06	369.60	346.06	+	0.67	+	7.51
41 Pan Prepared	0.0422	361.97	357.98	320.98	+	1.11	+	12.77
Clothing and footwear	9.4826	270.77	266.53	242.74	+	1.59	+	11.55
42 Cotton Cloth	2.8381	297.45	292.87	261.63	+	1.56	+	13.69
43 Woolen Cloth	1.0959	255.94	258.25	239.27	-	0.89	+	6.97
44 Readymade Garments	1.1345	247.56	240.43	221.82	+	2.97	+	11.60
45 Woolen Readymade Garments	0.5401	309.66	309.66	268.35	+	0.00	+	15.39
46 Tailoring	1.2999	259.23	246.58	230.00	+	5.13	+	12.71
47 Hosiery	0.4322	346.74	346.40	320.84	+	0.10	+	8.07
48 Dopatta	0.2078	248.36	244.42	228.45	+	1.61	+	8.72
49 Cleaning and Laundering	0.0176	257.03	258.58	248.77	-	0.60	+	3.32
50 Footwear	1.9165	235.78	233.56	214.41	+	0.95	+	9.97
Housing, water, Elec., Gas and Fuels	18.4853	227.13	227.13	231.25	+	0.00	-	1.78
51 House Rent	8.6110	175.84	175.84	166.06	+	0.00	+	5.89
52 Construction Input Items	0.6306	249.88	251.31	230.32	-	0.57	+	8.49
53 Construction Wage Rates	0.2526	241.26	239.74	224.84	+	0.63	+	7.30
54 Water Supply	0.0645	311.91	311.91	292.34	+	0.00	+	6.69
55 Garbage Collection	0.0080	204.36	204.36	189.52	+	0.00	+	7.83
56 Electricity Charges	3.4431	266.13	269.56	339.66	-	1.27	-	21.65
57 Liquefied Hydrocarbons	0.9994	308.76	301.13	324.29	+	2.53	-	4.79
58 Solid Fuel	4.4761	272.39	271.33	252.20	+	0.39	+	8.01

Annexure B: CPI (Rural) Index Numbers by Commodity Groups & Commodities (2015-16=100)

Item and Specification	Weight	Index Numbers			% Change in Mar 2025 over			
		Mar 25	Feb 25	Mar 24	Feb 2025	Mar 2024		
<i>Furnishing and household equipment</i>	4.1031	291.09	290.37	279.16	+	0.25	+	4.27
59 Furniture and Furnishing	0.5786	285.58	285.45	257.30	+	0.05	+	10.99
60 Household Textiles	0.4382	241.37	241.47	220.57	-	0.04	+	9.43
61 Household Equipments	1.2774	289.33	288.28	270.82	+	0.36	+	6.83
62 Plastic Products	0.0776	294.90	294.42	262.20	+	0.16	+	12.47
63 Major Tools and Equipments	0.0324	242.21	241.33	219.48	+	0.36	+	10.36
64 Washing Soaps, Detergents and	1.6989	307.88	306.98	309.90	+	0.29	-	0.65
<i>Health</i>	3.5141	266.98	266.98	236.60	+	0.00	+	12.84
65 Drugs and Medicines	1.5792	317.73	318.21	271.02	-	0.15	+	17.23
66 Doctor Clinic Fee	0.5128	303.77	303.77	281.01	+	0.00	+	8.10
67 Dental Services	0.0181	225.18	225.18	188.38	+	0.00	+	19.53
68 Medical Tests	0.3967	225.24	223.39	211.47	+	0.83	+	6.51
69 Hospitals Services	1.0073	185.87	185.84	170.77	+	0.02	+	8.84
<i>Transport</i>	5.5580	317.00	317.65	321.67	-	0.20	-	1.45
70 Motor Vehicles	0.7305	193.17	193.15	192.76	+	0.01	+	0.21
71 Motor Vehicles Accessories	0.1572	271.27	270.52	258.60	+	0.28	+	4.90
72 Motor Fuels	2.4932	350.72	352.05	380.01	-	0.38	-	7.71
73 Mechanical Services	0.3645	230.99	230.99	221.45	+	0.00	+	4.31
74 Motor Vehicle Tax	0.0174	342.03	342.03	150.93	+	0.00	+	126.61
75 Transport Services	1.7952	341.79	342.03	320.62	-	0.07	+	6.60
<i>Communication</i>	1.9940	128.68	128.68	127.82	+	0.00	+	0.67
76 Postal Services	0.0070	179.32	179.32	179.32	+	0.00	+	0.00
77 Communication Apparatus	0.3362	161.60	161.60	156.53	+	0.00	+	3.24
78 Communication Services	1.6508	121.76	121.76	121.76	+	0.00	+	0.00
<i>Recreation and culture</i>	1.3764	309.31	310.02	276.61	-	0.23	+	11.82
79 Recreation and Culture	0.4763	253.92	252.48	218.09	+	0.57	+	16.43
80 Text Books	0.5047	357.19	360.47	327.72	-	0.91	+	8.99
81 Newspapers	0.0230	242.52	242.52	242.52	+	0.00	+	0.00
82 Stationery	0.3724	319.40	319.40	284.31	+	0.00	+	12.34
<i>Education</i>	2.1342	233.45	226.30	185.46	+	3.16	+	25.88
83 Education	2.1342	233.45	226.30	185.46	+	3.16	+	25.88
<i>Restaurants and hotels</i>	6.1895	292.11	291.47	267.45	+	0.22	+	9.22
84 Readymade Food	3.8001	318.89	317.85	294.27	+	0.33	+	8.37
85 Marriage Hall Charges	2.2525	257.78	257.77	231.55	+	0.00	+	11.33
86 Accommodation Services	0.1369	113.40	113.40	113.40	+	0.00	+	0.00
<i>Misc. goods and services</i>	5.0174	327.98	324.44	284.12	+	1.09	+	15.44
87 Personal Grooming Services	1.5363	307.89	306.05	285.65	+	0.60	+	7.79
88 Appliances/Articles/Products	2.2746	263.33	262.90	242.67	+	0.16	+	8.51
89 Personal Effects n.e.c.	1.2065	475.45	463.85	360.29	+	2.50	+	31.96

Annexure C: Wholesale Price Indices by Major Groups & Commodities (2015-16=100)

Item and Specification	Weight	Index Numbers			% Change in Mar 2025 over	
		Mar 25	Feb 25	Mar 24	Feb 2025	Mar 2024
General	100.0000	312.85	311.94	317.95	+ 0.29	- 1.60
Agriculture Forestry & Fishery	25.7674	280.94	276.43	299.87	+ 1.63	- 6.31
001 Wheat	0.6297	228.79	226.82	358.29	+ 0.87	- 36.14
002 Maize	0.6764	273.70	279.05	245.54	- 1.92	+ 11.47
003 Rice	2.4413	326.34	328.77	359.58	- 0.74	- 9.24
004 Sorghum / Jowar	0.0214	273.62	263.90	298.65	+ 3.68	- 8.38
005 Millet / Bajra	0.0374	327.96	305.69	250.79	+ 7.29	+ 30.77
006 Vegetables	1.2441	210.04	216.43	449.12	- 2.95	- <u>53.23</u>
007 Fresh Fruits	1.5144	359.52	288.73	295.96	+ 24.52	+ 21.48
008 Dry Fruits	0.2478	366.01	364.06	321.99	+ 0.54	+ 13.67
009 Cotton Seeds	1.1511	198.99	196.92	175.59	+ 1.05	+ 13.33
010 Other Oil Seeds	0.0722	275.39	282.03	279.49	- 2.35	- 1.47
011 Edible Roots / Potatoes	0.2540	293.87	326.27	359.11	- 9.93	- 18.17
012 Stimulant & Spice Crops	0.1634	333.37	335.34	418.71	- 0.59	- 20.38
013 Pulses	0.4901	274.02	281.90	271.48	- 2.80	+ 0.94
014 Sugar Crops	1.0725	330.31	309.44	306.05	+ 6.74	+ 7.93
015 Fibre Crops	5.3169	324.80	335.18	405.11	- 3.10	- 19.82
016 Unmanufactured Tobacco	0.0742	571.81	569.34	546.43	+ 0.43	+ 4.64
017 Poultry	0.5633	347.17	304.36	286.01	+ 14.07	+ 21.38
018 Raw Milk from Bovine Animals	7.0279	251.70	247.86	226.55	+ 1.55	+ 11.10
019 Eggs	0.5034	329.50	294.42	312.10	+ 11.91	+ 5.58
020 Raw Animal Materials / Wool	0.0351	254.30	251.59	136.07	+ 1.08	+ <u>86.89</u>
021 Hides, Skins & Fur Skins, Raw	0.4834	59.69	59.72	49.34	- 0.05	+ 20.98
022 Fuel Wood in Logs	0.0179	215.73	215.59	185.87	+ 0.06	+ 16.06
023 Fish Live Fresh or Chilled	1.7295	225.84	226.98	216.65	- 0.50	+ 4.24
Ores/Minerals, Elec., Gas & Water	12.0069	353.52	359.16	387.71	- 1.57	- 8.82
024 Coal not Agglomerated	0.7508	219.17	219.17	194.29	+ 0.00	+ 12.81
025 Natural Gas Liquefied	5.7065	418.86	418.54	419.75	+ 0.08	- 0.21
026 Salt & Pure Sodium Chloride	0.0584	407.95	407.92	354.57	+ 0.01	+ 15.05
027 Electrical Energy	5.4912	303.42	316.06	381.22	- 4.00	- 20.41
Food, Beverages, Tobacco, Textile	31.1122	282.50	279.35	263.95	+ 1.13	+ 7.03
Food Products, Beverages & Tobacco	20.0718	299.83	295.70	279.03	+ 1.40	+ 7.45
028 Meat of Animals	3.4559	329.76	325.25	286.10	+ 1.39	+ 15.26
029 Vegetables & Fruit Juice	0.0058	251.66	251.61	238.43	+ 0.02	+ 5.55
030 Dried Fruits & Nuts	0.1733	389.92	390.92	384.20	- 0.26	+ 1.49
031 Fruit Juices	0.3880	277.93	272.04	257.02	+ 2.17	+ 8.14
032 Vegetable Oils Refined	1.9242	286.79	287.31	271.88	- 0.18	+ 5.48
033 Vegetable Ghee	1.5632	369.68	372.11	312.04	- 0.65	+ 18.47
034 Oil Cakes	0.9611	267.02	265.89	267.35	+ 0.42	- 0.12
035 Processed Liquid Milk	4.4437	320.55	320.55	255.81	+ 0.00	+ 25.31
036 Milk & Cream in Solid Form	0.0316	289.59	289.72	258.39	- 0.04	+ 12.07
037 Ice Cream	0.0047	200.56	200.56	199.18	+ 0.00	+ 0.69
038 Dairy Products N.E.C	0.0117	326.20	326.63	276.46	- 0.13	+ 17.99
039 Wheat Flour	2.3034	228.14	227.82	350.16	+ 0.14	- 34.85
040 Other Cereal Flour	0.0604	276.94	296.40	232.71	- 6.57	+ 19.01
041 Sugar Refined	1.7975	277.44	250.30	235.22	+ 10.84	+ 17.95
042 Chocolate	0.0139	143.40	143.40	122.88	+ 0.00	+ 16.70
043 Sugar Confectionary	0.0738	314.51	313.54	236.84	+ 0.31	+ 32.79
044 Coffee & Tea	0.7303	269.83	280.22	271.36	- 3.71	- 0.56
045 Spices	0.1449	301.74	300.88	371.24	+ 0.29	- 18.72
046 Other Food Products	0.0336	287.42	250.49	231.88	+ 14.74	+ 23.95
047 Mineral Water	0.0207	205.96	205.35	212.01	+ 0.30	- 2.85
048 Beverages	0.6303	261.10	261.51	258.68	- 0.16	+ 0.94
049 Tobacco Products	1.2998	301.20	280.52	259.58	+ 7.37	+ 16.03
Textiles & Apparels	10.3289	256.00	254.82	240.03	+ 0.46	+ 6.65
050 Cotton Yarn	5.2491	239.61	239.61	239.61	+ 0.00	+ 0.00
051 Nylon Yarn	0.1719	95.24	95.24	95.24	+ 0.00	+ 0.00
052 Blended Yarn	0.1689	148.12	148.12	148.12	+ 0.00	+ 0.00
053 Woven Fabrics	0.0128	255.78	255.78	243.83	+ 0.00	+ 4.90
054 Cotton Fabrics	0.6343	341.71	340.86	322.82	+ 0.25	+ 5.85
055 Other Fabrics	1.1016	260.31	259.21	213.57	+ 0.42	+ 21.89
056 Silk & Reyon Fabrics	0.7350	400.42	399.20	354.49	+ 0.31	+ 12.96
057 Towels	0.1235	202.83	202.83	195.75	+ 0.00	+ 3.62

Annexure C: Wholesale Price Indices by Major Groups & Commodities (2015-16=100)

Item and Specification	Weight	Index Numbers			% Change in Mar 2025 over	
		Mar 25	Feb 25	Mar 24	Feb 2025	Mar 2024
058 Blankets	0.0029	158.72	158.72	145.65	+ 0.00	+ 8.97
059 Bed Sheets	0.0913	203.39	203.39	167.37	+ 0.00	+ 21.52
060 Quilts	0.0019	243.00	243.00	234.52	+ 0.00	+ 3.62
061 Woolen Carpets	0.0383	177.15	177.15	173.86	+ 0.00	+ 1.89
062 Synthetic Carpets	0.0566	156.16	156.16	150.83	+ 0.00	+ 3.53
063 Hosiery Products	0.8832	213.56	209.19	192.58	+ 2.09	+ 10.89
064 Readymade Garments	1.0576	279.10	273.70	237.17	+ 1.97	+ 17.68
Leather Products	0.7115	178.56	174.41	185.68	+ 2.38	- 3.83
065 Leather Without Hair	0.2973	174.84	167.33	181.35	+ 4.49	- 3.59
066 Other Leather N.E.C	0.2567	141.18	138.40	158.95	+ 2.01	- 11.18
067 Footwear	0.1575	246.48	246.48	237.41	+ 0.00	+ 3.82
Other Transportable Goods	22.3979	340.78	342.96	351.98	- 0.64	- 3.18
068 Timber	0.0165	237.52	237.52	228.98	+ 0.00	+ 3.73
069 Printing Paper	0.4279	258.64	258.64	230.55	+ 0.00	+ 12.18
070 Hard Board	0.1579	261.62	261.62	209.29	+ 0.00	+ 25.00
071 Motor Spirit	1.6268	362.21	363.67	397.40	- 0.40	- 8.86
072 Diesel Oil	5.4849	326.65	336.87	361.59	- 3.03	- 9.66
073 Kerosene Oil	0.2151	329.71	339.77	371.33	- 2.96	- 11.21
074 Furnace Oil	3.2664	556.43	550.39	605.83	+ 1.10	- 8.15
075 Mobil Oil	0.7114	251.76	251.76	236.05	+ 0.00	+ 6.66
076 Chemicals	1.7720	269.81	269.04	278.10	+ 0.29	- 2.98
077 Dyeing Material	0.1539	272.52	272.52	220.27	+ 0.00	+ 23.72
078 Fertilizers	2.8657	269.90	269.89	270.64	+ 0.00	- 0.27
079 Pesticides	0.2763	210.57	210.57	185.91	+ 0.00	+ 13.26
080 Insecticides	0.1276	174.37	174.37	151.05	+ 0.00	+ 15.44
081 Paints & Varnishes	0.1916	278.01	278.07	269.25	- 0.02	+ 3.25
082 Medicines	1.1428	377.95	375.65	323.95	+ 0.61	+ 16.67
083 Soaps & Detergents	0.8168	238.91	239.93	226.33	- 0.43	+ 5.56
084 Auto Tyres	0.2703	262.60	262.33	246.79	+ 0.10	+ 6.41
085 Plastic Products	0.4550	209.21	209.21	193.80	+ 0.00	+ 7.95
086 Glass sheets	0.2089	393.19	393.19	355.31	+ 0.00	+ 10.66
087 Other Glass Articles	0.1635	217.11	215.98	209.51	+ 0.52	+ 3.63
088 Ceramics & Sanitary Fixture	0.0244	227.85	227.09	207.38	+ 0.33	+ 9.87
089 Bricks, Blocks & Tiles	0.1566	202.76	201.31	190.36	+ 0.72	+ 6.51
090 Cement	1.8145	266.54	273.56	245.68	- 2.57	+ 8.49
091 Bed Foam	0.0006	333.84	333.84	332.28	+ 0.00	+ 0.47
092 Matches	0.0505	3348.99	3329.35	3323.96	+ 0.59	+ 0.75
Metal Product, Machinery & Equipment	8.7156	387.74	388.47	380.58	- 0.19	+ 1.88
093 Steel Bar & Sheets	1.4615	315.39	320.19	352.08	- 1.50	- 10.42
094 Pipe Fittings	0.0780	485.91	485.91	435.75	+ 0.00	+ 11.51
095 Steel Products	0.3879	276.50	276.50	245.52	+ 0.00	+ 12.62
096 Engines & Motors	0.0046	204.19	204.19	186.89	+ 0.00	+ 9.26
097 Vacuum Pumps	0.0155	107.56	107.56	107.56	+ 0.00	+ 0.00
098 Air Conditioners	0.0049	309.58	309.58	304.78	+ 0.00	+ 1.57
099 Cultivators	0.0551	361.67	351.39	361.67	+ 2.93	+ 0.00
100 Chuff Cutter	0.1293	519.00	519.00	504.72	+ 0.00	+ 2.83
101 Tractors	0.0028	320.14	320.14	297.43	+ 0.00	+ 7.64
102 Lathe Machines	0.0525	523.49	523.49	472.24	+ 0.00	+ 10.85
103 Concrete Mixture	0.0107	426.37	426.37	412.08	+ 0.00	+ 3.47
104 Fridge,WashM,SewM,Fans,Iron	1.1645	304.01	304.01	279.22	+ 0.00	+ 8.88
105 Electric Wires	0.0912	361.81	360.52	288.99	+ 0.36	+ 25.20
106 Lighting Equipments	1.4431	757.41	757.41	733.30	+ 0.00	+ 3.29
107 Radio & Television	0.1843	190.53	190.53	196.21	+ 0.00	- 2.89
108 Motor Vehicles	0.0244	261.82	261.82	256.95	+ 0.00	+ 1.90
109 Motorcycles	0.2570	263.76	263.76	263.76	+ 0.00	+ 0.00
110 Bicycles	3.3483	316.55	316.55	308.80	+ 0.00	+ 2.51
