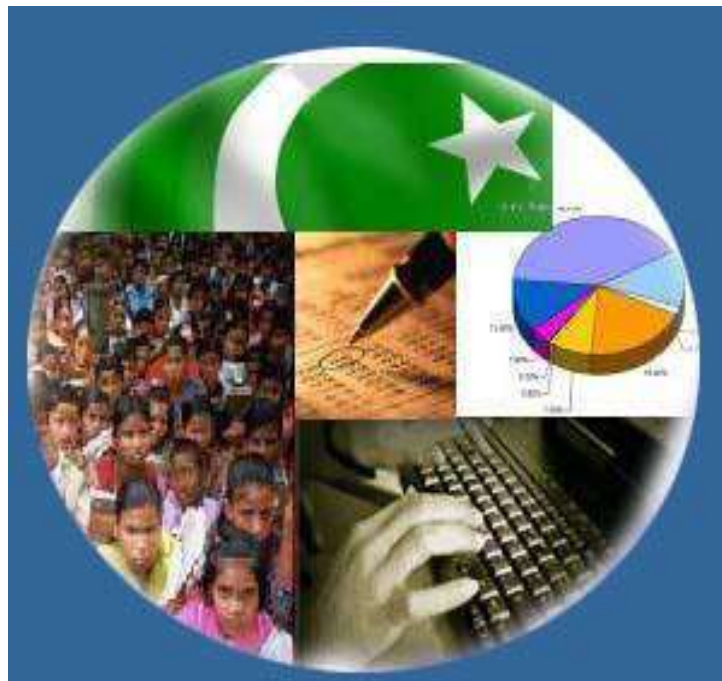




# Monthly Review on Price Indices



**January 2025**  
**(Base Year 2015-16)**

**Government of Pakistan**  
**Ministry of Planning, Development & Special Initiatives**  
**Pakistan Bureau of Statistics**  
**Islamabad**

## **PRICE STATISTICS TEAM**

<b>S#</b>	<b>Name</b>	<b>Designation</b>
1.	Dr. Naeem Uz Zafar (S.I)	Chief Statistician
2.	Dr. Bahrawar Jan	Deputy Director General
3.	Mr. Naseer Ahmad	Director
4.	Dr. Ahtasham Gul	Chief Statistical Officer
5.	Mr. Adnan Shams	Statistical Officer
6.	Mr. Kashif Ali	Statistical Officer
7.	Miss. Umaira Zareen	Statistical Officer
8.	Mr. Abdul Qadir	Statistical Officer
9.	Mrs. Safia Akram	Statistical Officer
10.	Mrs. Faiza Razzaq	Statistical Officer
12.	Mr. Umer Farooq	Statistical Assistant
13.	Mr. Ansar Mahmood	Statistical Assistant
14.	Mrs. Madiha Gulfraz	Statistical Assistant
15.	Mrs. Humail Fatima	Statistical Assistant
16.	Mr. Muhammad Asif	Statistical Assistant

## **IT & SOFTWARE TEAM**

1.	Mr. Muhammad Sarwar Gondal (S.I)	Member (Support Services)
2.	Mr. Muhammad Ehtesham	Director (DP)
3.	Mrs. Sobia Munawar	Director (DP)
4.	Mr. Arsalan Bashir	Data Processing Officer
5.	Mr. Muhammad Kibria	Data Processing Officer

## Inflation in Brief

- CPI inflation General**, decreased to 2.4% on year-on-year basis in January 2025 as compared to 4.1% in the previous month and 28.3% in January 2024. On month-on-month basis, it increased by 0.2% in January 2025 as compared to 0.1% in the previous month and an increase of 1.8% in January 2024.
- CPI inflation Urban**, decreased to 2.7% on year-on-year basis in January 2025 as compared to 4.4% in the previous month and 30.2% in January 2024. On month-on-month basis, it increased to 0.2% in January 2025 as compared to a negative change of 0.1% in the previous month and an increase of 1.8% in January 2024.
- CPI inflation Rural**, decreased to 1.9% on year-on-year basis in January 2025 as compared to 3.6% in the previous month and 25.7% in January 2024. On month-on-month basis, it increased by 0.2% in January 2025 as compared to 0.3% in the previous month and an increase of 1.9% in January 2024.
- SPI inflation** on YoY decreased to 0.7% in January 2025 as compared to 4.2% a month earlier and 36.2% in January 2024. On MoM basis, it decreased to 1.4% in January 2025 as compared to 0.8% a month earlier and an increase of 2.0% in January 2024.
- WPI inflation** on YoY basis decreased to 0.6% in January 2025 as compared to 1.9% a month earlier and an increase of 27.0% in January 2024. On MoM basis, it increased by 0.2% in January 2025 as compared to a decrease of 0.4% in the previous month and 1.5% change was observed in corresponding month of last year i.e. January 2024.
- Figures 1 and 2 show graphically the yearly data of Table 1.a for Urban and Rural CPI while Table 1.1 shows "Period Average" and "YoY" percentage changes in indices of three years.

Table 1.a General Inflation (%) (Base 2015-16)																		
PERIOD	CPI														SPI**		WPI	
	General						Food				Non-Food							
	National		Urban		Rural		Urban		Rural		Urban		Rural		YoY	MoM	YoY	MoM
YoY	MoM	YoY	MoM	YoY	MoM	YoY	MoM	YoY	MoM	YoY	MoM	YoY	MoM	YoY	MoM	YoY	MoM	
Apr-23	36.4	2.4	33.5	2.0	40.7	3.0	46.8	3.4	52.2	4.2	24.9	1.0	29.9	1.6	42.1	2.7	33.4	0.1
May-23	38.0	1.6	35.1	1.5	42.2	1.7	48.1	1.9	52.4	1.4	26.6	1.2	32.5	2.0	43.0	1.3	32.8	1.0
Jun-23	29.4	-0.3	27.3	0.1	32.4	-0.8	40.8	0.1	41.5	-1.6	18.7	0.1	23.8	0.1	34.9	0.2	22.4	-0.3
Jul-23	28.3	3.5	26.3	3.6	31.3	3.3	40.2	3.7	41.3	3.5	17.3	3.5	22.0	3.0	29.3	2.8	23.1	2.5
Aug-23	27.4	1.7	25.0	1.6	30.9	1.9	38.8	0.6	40.6	0.8	16.3	2.4	22.0	3.1	27.9	4.1	24.3	4.2
Sep-23	31.4	2.0	29.7	1.7	33.9	2.5	33.9	1.5	35.4	1.8	26.8	1.8	32.3	3.2	32.0	1.7	26.4	3.1
Oct-23	26.8	1.0	25.5	1.1	28.7	0.9	28.9	0.6	28.6	0.7	23.1	1.4	28.8	1.1	34.2	0.2	24.6	-1.9
Nov-23	29.2	2.7	30.4	4.3	27.5	0.4	29.8	0.8	29.2	1.0	30.9	7.0	25.9	-0.2	30.6	3.3	26.4	1.4
Dec-23	29.7	0.8	30.9	0.7	27.9	1.0	28.8	-0.7	29.3	0.1	32.4	1.8	26.4	1.8	35.3	3.8	27.3	0.0
<b>Jan-24</b>	<b>28.3</b>	<b>1.8</b>	<b>30.2</b>	<b>1.8</b>	<b>25.7</b>	<b>1.9</b>	<b>27.4</b>	<b>2.8</b>	<b>25.1</b>	<b>2.3</b>	<b>32.3</b>	<b>1.1</b>	<b>26.3</b>	<b>1.4</b>	<b>36.2</b>	<b>2.0</b>	<b>27.0</b>	<b>1.5</b>
Feb-24	23.1	0.0	24.9	0.2	20.5	-0.3	20.2	-1.5	19.0	-1.1	28.2	1.5	22.1	0.6	30.4	-0.8	18.7	1.1
Mar-24	20.7	1.7	21.9	1.4	19.0	2.1	16.6	2.4	17.1	2.8	25.8	0.7	21.0	1.4	25.9	2.1	14.8	1.3
Apr-24	17.3	-0.4	19.4	-0.1	14.5	-0.9	11.3	-1.3	9.5	-2.6	25.6	0.8	20.0	0.8	21.6	-0.7	13.9	-0.7
May-24	11.8	-3.2	14.3	-2.8	8.2	-3.9	2.2	-6.3	-0.1	-7.4	23.6	-0.4	17.2	-0.4	15.3	-4.0	9.9	-2.5
Jun-24	12.6	0.5	14.9	0.6	9.3	0.3	2.6	0.4	1.3	-0.2	24.3	0.7	17.9	0.8	16.6	1.3	10.6	0.4
July-24	11.1	2.1	13.2	2.0	8.1	2.2	3.4	4.5	1.3	3.6	20.7	0.5	15.5	0.9	15.7	2.0	10.4	2.3
Aug-24	9.6	0.4	11.7	0.3	6.7	0.6	4.1	1.3	1.9	1.3	17.4	-0.4	11.9	-0.2	10.8	-0.3	6.3	0.3
Sep-24	6.9	-0.5	9.3	-0.5	3.6	-0.5	1.7	-0.8	-0.9	-1.0	15.0	-0.3	8.4	-0.1	9.2	0.2	1.9	-1.1
Oct-24	7.2	1.2	9.3	1.1	4.2	1.5	2.7	1.6	0.6	2.2	14.2	0.7	8.0	0.8	9.7	0.6	3.9	0.0
Nov-24	4.9	0.5	5.2	0.5	4.3	0.5	1.7	-0.2	-0.2	0.2	7.8	1.0	9.1	0.8	7.3	1.0	2.3	-0.1
Dec-24	4.1	0.1	4.4	-0.1	3.6	0.3	2.5	0.1	-0.2	0.1	5.7	-0.2	7.6	0.5	4.2	0.8	1.9	-0.4
<b>Jan-25</b>	<b>2.4</b>	<b>0.2</b>	<b>2.7</b>	<b>0.2</b>	<b>1.9</b>	<b>0.2</b>	<b>-0.6</b>	<b>-0.3</b>	<b>-2.9</b>	<b>-0.4</b>	<b>5.0</b>	<b>0.5</b>	<b>7.0</b>	<b>0.9</b>	<b>0.7</b>	<b>-1.4</b>	<b>0.6</b>	<b>0.2</b>

\*\* SPI for quintile 1. Digits 0.0\* are due to rounding off.

### Core inflation (NFNE)

7. Measured by **non-food non-energy Urban** decreased to 7.8% on (YoY) basis in January 2025 as compared to 8.1% in the previous month and 17.8% in January 2024. On (MoM) basis, it increased by 0.8% in January 2025 as compared to 0.2% in previous month and an increase of 1.1% in corresponding month of last year i.e. January, 2024.
8. Measured by **non-food non-energy Rural** decreased to 10.4% on (YoY) basis in January 2025 as compared to 10.7% in the previous month and 24.6% in January 2024. On (MoM) basis, it increased by 0.9% in January 2025 as compared to an increase of 0.6% in previous month and an increase of 1.2% in corresponding month of last year i.e. January 2024.

### Core inflation (Trimmed)

9. Measured by 20% **weighted trimmed mean Urban** decreased to 5.4% on (YoY) basis in January 2025 as compared to 6.2% in the previous month and 22.1% in January 2024. On (MoM) basis, it increased by 0.6% in January 2025 as compared to 0.1% in the previous month and an increase of 1.0% in corresponding month of last year i.e. January 2024.
10. Measured by 20% **weighted trimmed mean Rural** decreased to 5.4% on (YoY) basis in January 2025 as compared 6.5% in the previous month and 25.8% in January 2024. On (MoM) basis, it increased by 0.7% in January 2025 as compared to 0.6% in the previous month and an increase of 1.2% in corresponding month of last year i.e. January 2024.

**Table 1.b Core Inflation (%) (Base 2015-16)**

Period	NFNE				Trimmed			
	Urban		Rural		Urban		Rural	
	YoY	MoM	YoY	MoM	YoY	MoM	YoY	MoM
Jan-24	17.8	1.1	24.6	1.2	22.1	1.0	25.8	1.2
Feb-24	15.5	0.3	21.9	0.4	16.0	0.3	21.3	0.4
Mar-24	12.8	0.1	20.0	0.8	14.8	0.6	18.4	0.9
Apr-24	13.1	2.1	19.3	2.0	13.4	0.5	15.0	0.6
May-24	12.3	0.4	17.0	0.5	11.0	-0.5	10.6	-0.9
June-24	12.2	0.6	17.0	0.9	10.3	0.6	11.0	0.5
July-24	11.7	0.7	16.9	1.1	10.3	1.2	11.3	1.7
Aug-24	10.2	0.4	14.4	0.6	8.0	0.2	9.6	0.4
Sep-24	9.3	0.2	12.1	0.5	7.1	-0.1	7.4	-0.1
Oct-24	8.6	0.6	11.7	0.7	6.4	0.7	7.2	1.0
Nov-24	8.9	1.2	10.9	0.7	7.5	0.6	7.8	0.5
Dec-24	8.1	0.2	10.7	0.6	6.2	0.1	6.5	0.6
Jan-25	7.8	0.8	10.4	0.9	5.4	0.6	5.4	0.7

**Table 1.1 Period Average and Y-o-Y % Change**

INDEX	Average July - January % Changes			January over January % Changes		
	2024-2025	2023-2024	2022-2023	2024-2025	2023-2024	2022-2023
CPI (National)	6.50	28.73	25.40	2.41	28.34	27.55
CPI (Urban)	7.83	28.32	23.28	2.72	30.23	24.38
CPI (Rural)	4.61	29.30	28.55	1.95	25.69	32.26
SPI	8.03	32.27	28.56	0.67	36.21	30.54
WPI	3.83	25.60	33.26	0.63	26.95	28.53

Figure 1: Urban Inflation - YoY, Special Indices

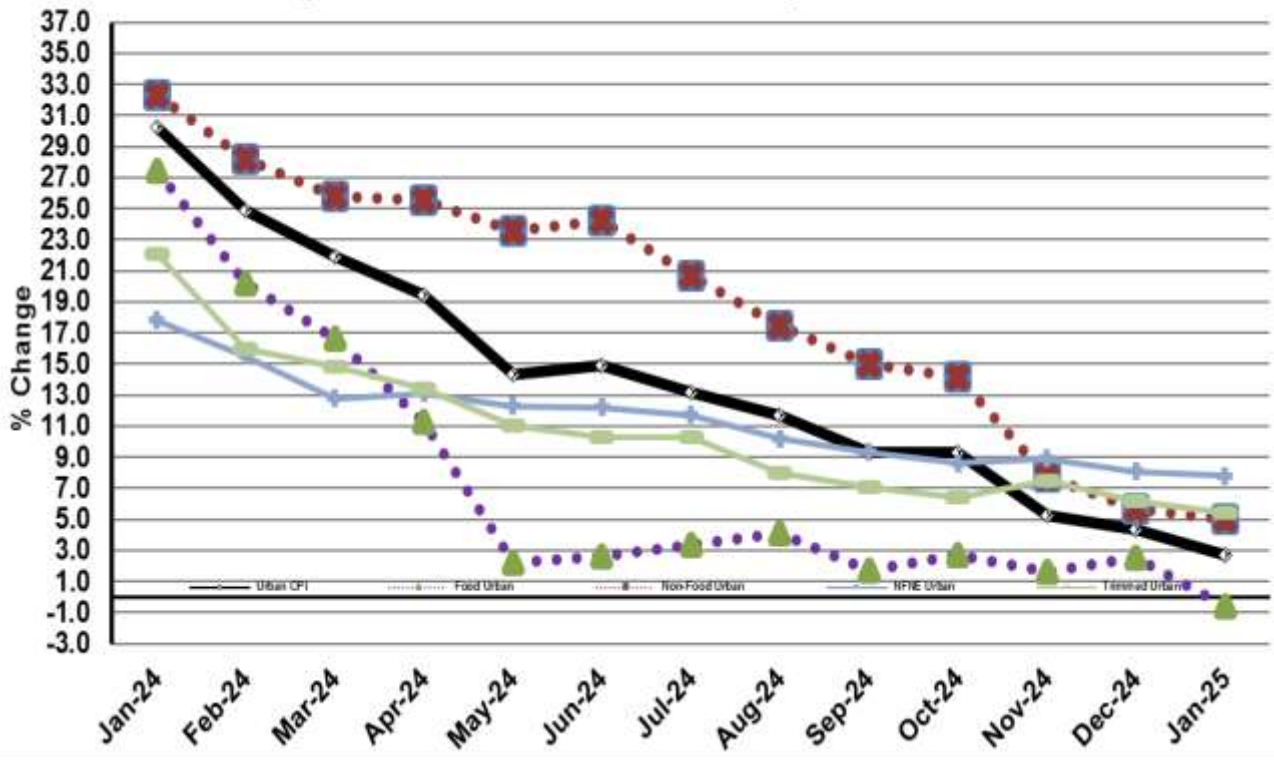


Figure 2: Rural Inflation - YoY, Special Indices

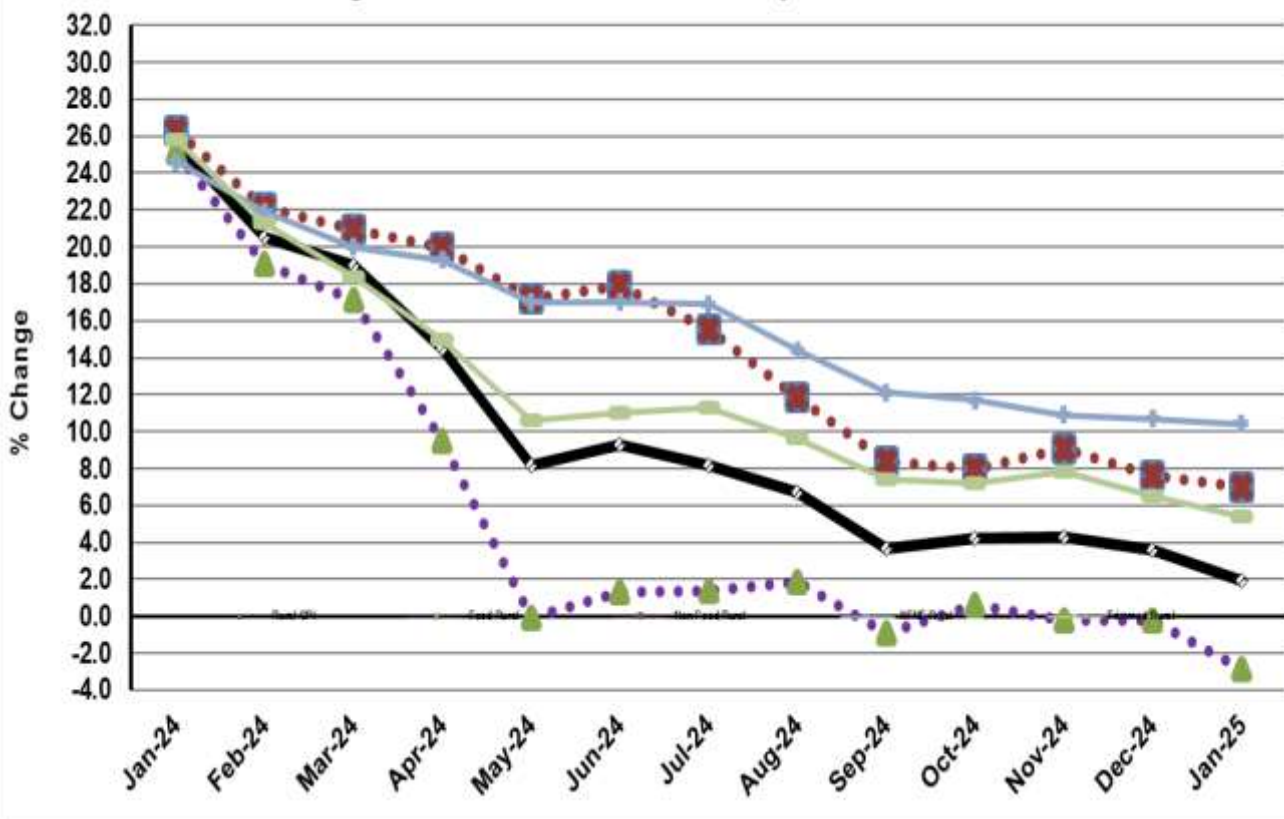


Figure 3: Urban Inflation - MoM, Special Indices

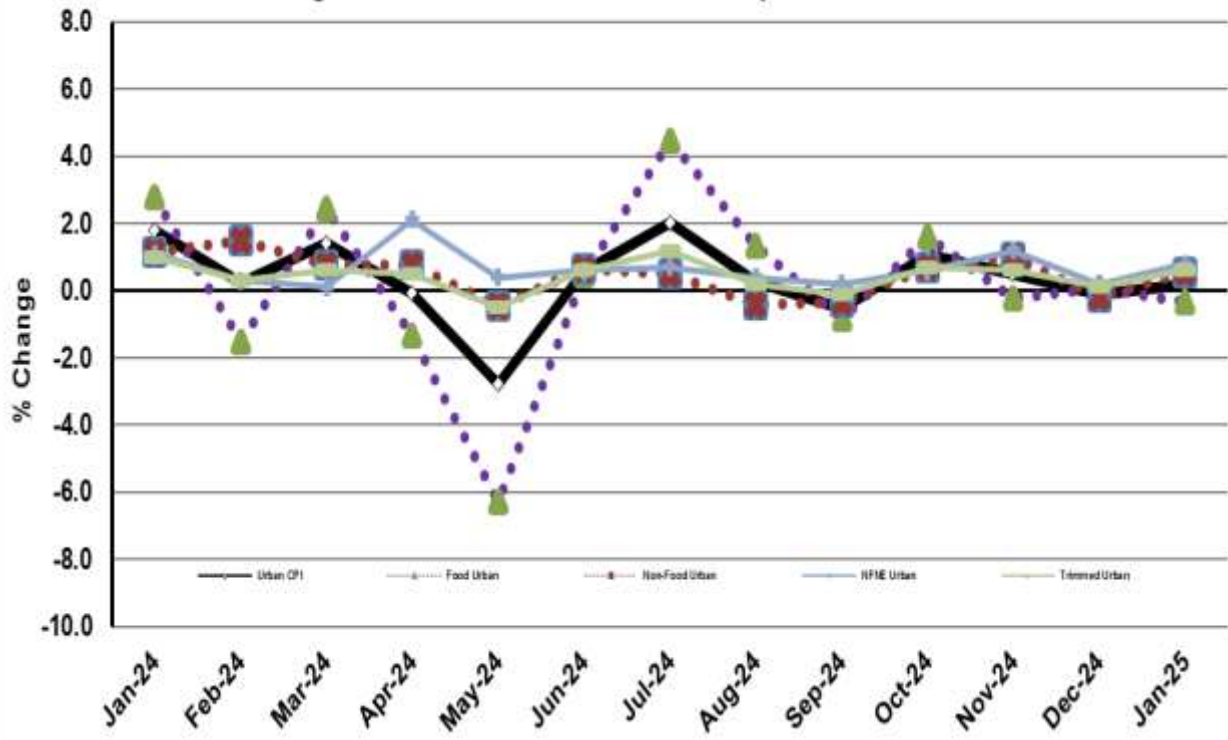


Figure 4: Rural Inflation - MoM, Special Indices

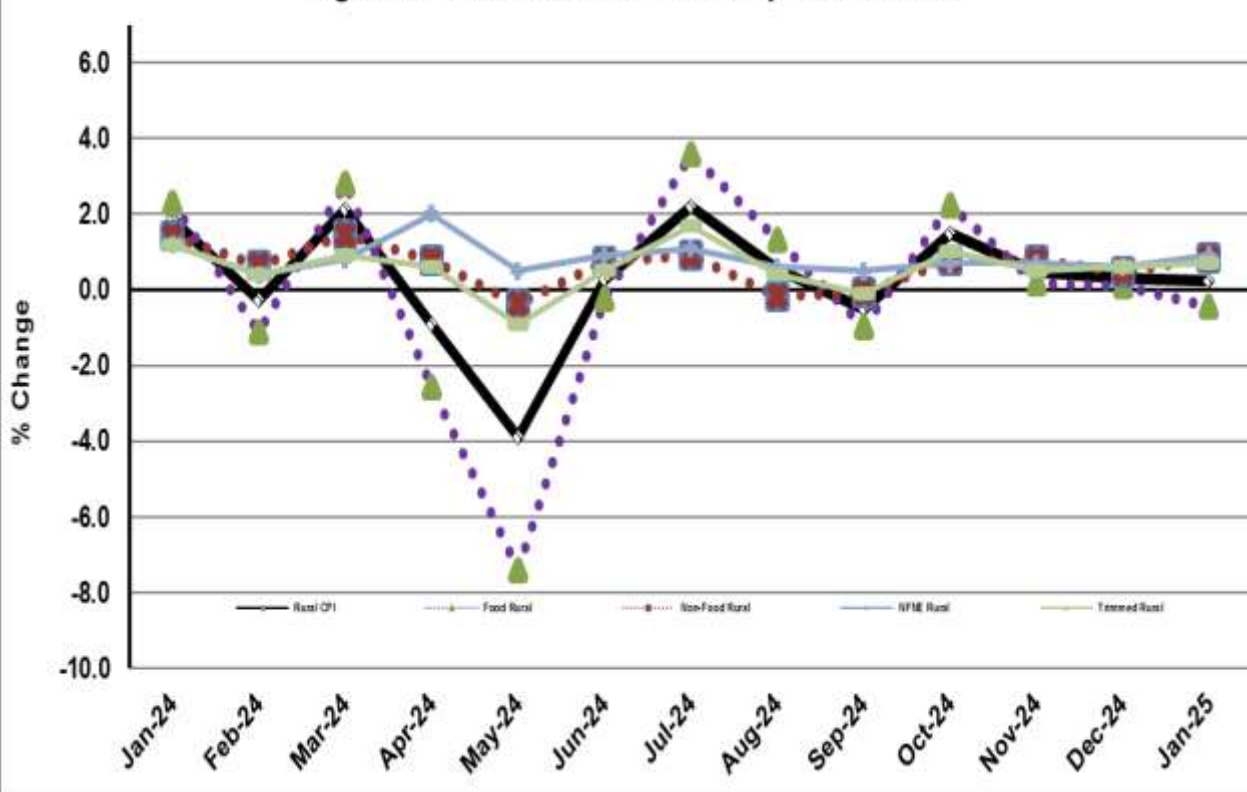




Figure 5: CPI YoY (National, Urban, Rural)

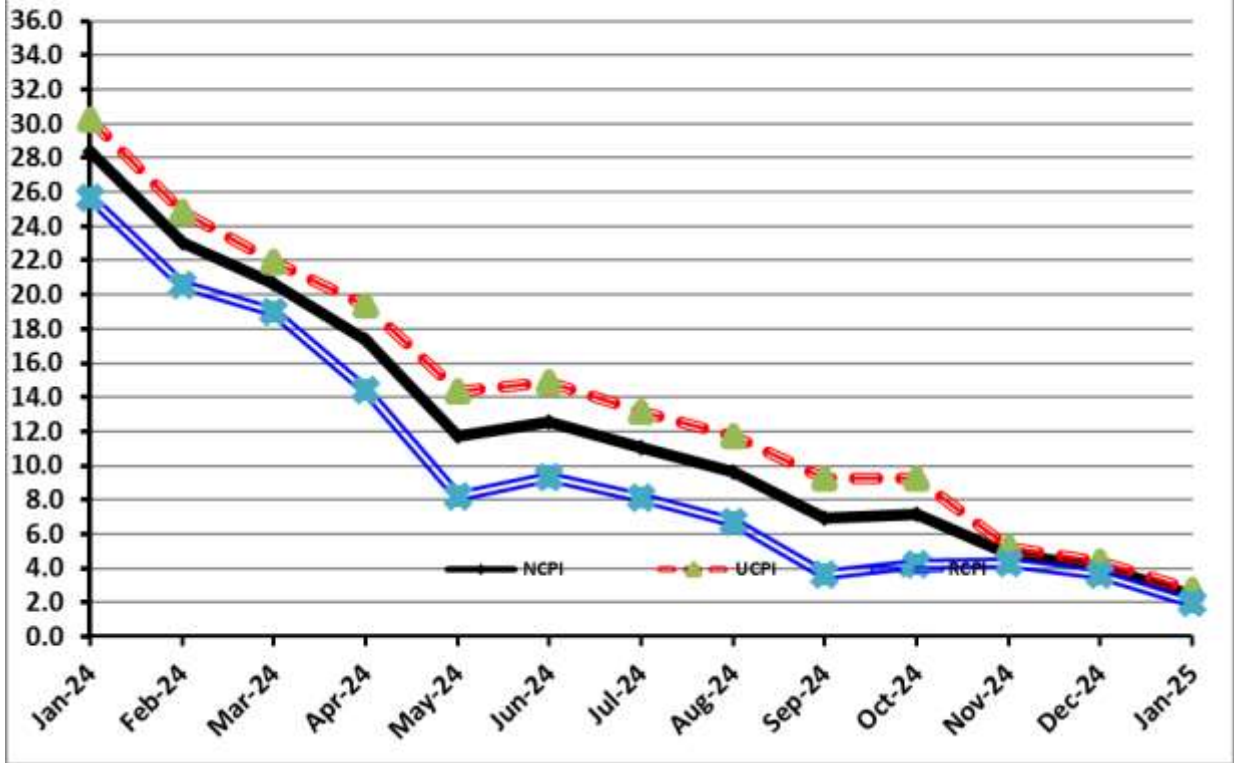
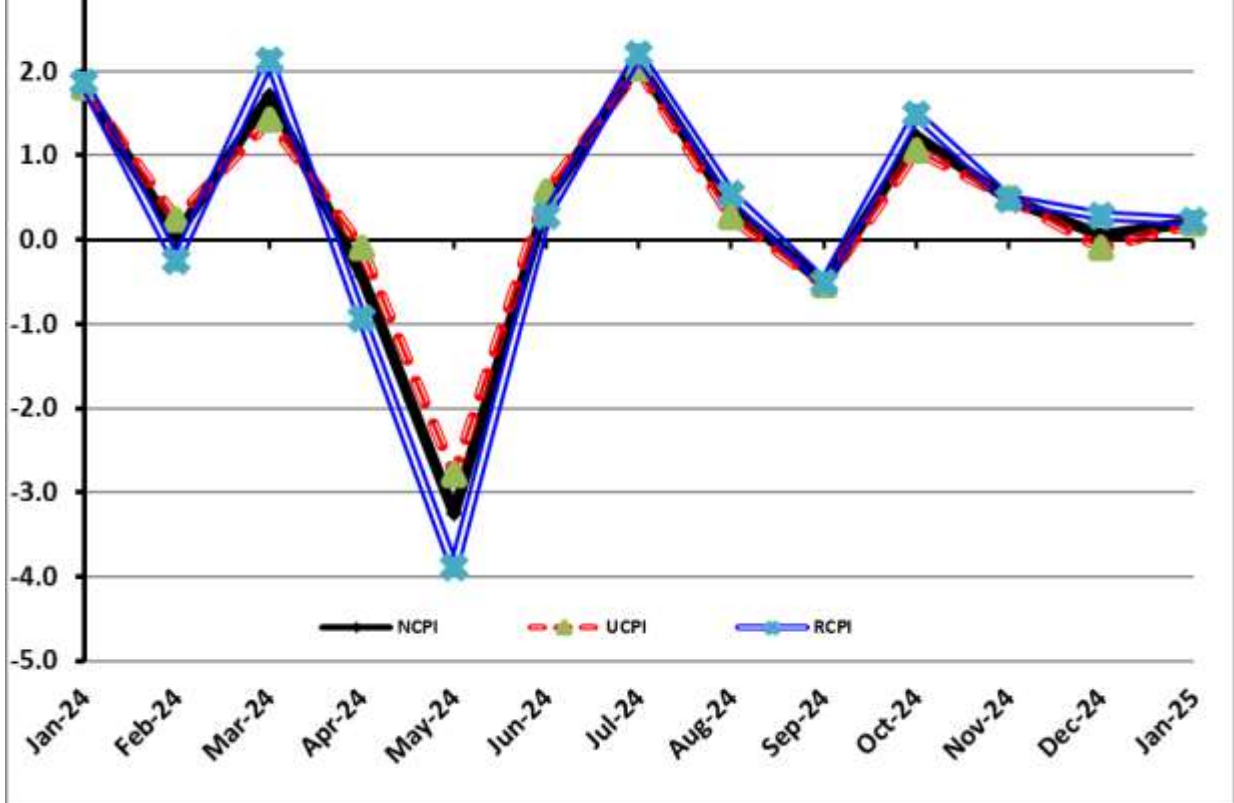


Figure 6: CPI MoM (National, Urban, Rural)



## I. National Consumer Price Index (N-CPI)

The **National Consumer Price Index** for **January 2025** is increased by **0.20%** over **December 2024** and increased to **2.41%** over corresponding month of the last year i.e. **January 2024**.

**Table 1: Consumer Price Index (National) by Group of Commodities and Services (Base 2015-16)**

No	Group	Group Weight (%)	Indices			% Change Jan 2025 Over		Impact (In % points) Jan 2025 Over	
			Jan 25	Dec 24	Jan 24	Dec 24	Jan 24	Dec 24	Jan 24
	<b>General</b>	<b>100.00</b>	<b>266.17</b>	<b>265.63</b>	<b>259.92</b>	<b>0.20</b>	<b>2.41</b>	<b>0.20</b>	<b>2.41</b>
1.	Food & Non-alcoholic Bev.	34.58	280.69	282.32	289.77	-0.58	-3.13	-0.21	-1.21
	<i>Non-perishable Food Items</i>	29.60	284.10	279.03	289.69	1.82	-1.93	0.57	-0.64
	<i>Perishable Food Items</i>	4.99	260.40	301.87	290.26	-13.74	-10.28	-0.78	-0.57
2.	Alcoholic Bev. & Tobacco	1.02	385.70	384.67	365.13	0.27	5.63	0.00	0.08
3.	Clothing & Footwear	8.60	254.80	253.53	223.28	0.50	14.12	0.04	1.04
4.	Housing, Water, Electricity, Gas & Fuels	23.63	240.06	238.43	236.43	0.68	1.53	0.15	0.33
5.	Furnishing & Household Equipment Maintenance	4.10	275.04	273.77	261.81	0.46	5.05	0.02	0.21
6.	Health	2.79	267.65	265.00	234.60	1.00	14.09	0.03	0.35
7.	Transport	5.91	307.61	304.98	305.48	0.86	0.70	0.06	0.05
8.	Communication	2.21	134.89	134.89	134.73	0.00	0.12	0.00	0.00
9.	Recreation & Culture	1.59	277.27	276.71	256.41	0.20	8.13	0.00	0.13
10.	Education	3.79	205.48	205.25	186.15	0.11	10.38	0.00	0.28
11.	Restaurants & Hotels	6.92	283.35	280.75	263.45	0.93	7.55	0.07	0.53
12.	Miscellaneous	4.87	304.90	302.35	272.50	0.84	11.89	0.05	0.61



## II. Urban Consumer Price Index (UCPI)

The Urban Consumer Price Index for **January 2025** is increased by **0.19%** over **December 2024** and increased by **2.72%** over corresponding month of the last year i.e. **January 2024**.

**Table 2: Consumer Price Index (Urban) by Group of Commodities and Services (Base 2015-16)**

No	Group	Group Weight (%)	Indices			% Change Jan 2025 Over		Impact (In % points) Jan 2025 Over	
			Jan 25	Dec 24	Jan 24	Dec 24	Jan 24	Dec 24	Jan 24
	<b>General</b>	<b>100.00</b>	<b>262.17</b>	<b>261.67</b>	<b>255.22</b>	<b>0.19</b>	<b>2.72</b>	<b>0.19</b>	<b>2.72</b>
1.	Food & Non-alcoholic Bev.	30.42	278.37	279.90	284.23	-0.55	-2.06	-0.18	-0.70
	<i>Non-perishable Food Items</i>	25.97	282.91	277.20	284.49	2.06	-0.56	0.57	-0.16
	<i>Perishable Food Items</i>	4.46	251.93	295.67	282.73	-14.79	-10.89	-0.74	-0.54
2.	Alcoholic Bev. & Tobacco	0.85	406.23	405.62	385.76	0.15	5.31	0.00	0.07
3.	Clothing & Footwear	8.01	246.32	245.42	213.55	0.37	15.35	0.03	1.03
4.	Housing, Water, Electricity, Gas & Fuels	27.03	245.50	244.15	241.33	0.55	1.73	0.14	0.44
5.	Furnishing & Household Equip. & Maintenance	4.09	264.44	263.20	253.34	0.47	4.38	0.02	0.18
6.	Health	2.31	270.50	268.54	234.72	0.73	15.24	0.02	0.32
7.	Transport	6.14	302.43	300.02	300.26	0.80	0.72	0.06	0.05
8.	Communication	2.35	138.38	138.40	138.73	-0.01	-0.25	0.00	0.00
9.	Recreation & Culture	1.73	260.67	260.51	246.06	0.06	5.94	0.00	0.10
10.	Education	4.88	200.02	199.96	187.42	0.03	6.72	0.00	0.24
11.	Restaurants & Hotels	7.41	279.39	277.24	262.77	0.78	6.32	0.06	0.48
12.	Miscellaneous	4.77	294.76	292.40	267.64	0.81	10.13	0.04	0.51

Main contributors to month-on-month and year-on-year percentage changes are given below and detail is given in **Annexure-A**.

### 1. MONTH-ON-MONTH Top few commodities which varied from previous month i.e. December, 2024 are given below:

#### **FOOD**

**Increased:** Chicken (35.26%), Pulse Moong (5.43%), Fresh Fruits (5.01%), Cooking Oil (3.92%), Sugar (3.90%), Vegetable Ghee (2.61%), Sweetmeat (1.83%), Honey (1.67%), Mustard Oil (1.60%), Butter (1.32%), Milk Fresh (0.98%), Readymade Food (0.64%), Beans (0.63%), Fish (0.62%), Meat (0.29%), Wheat Flour (0.24%) and Rice (0.22%).

**Decreased:** Potatoes (28.07%), Tomatoes (20.70%), Fresh Vegetables (19.97%), Eggs (14.00%), Onions (13.98%), Pulse Mash (2.63%), Besan (2.40%), Gram Whole (1.44%), Pulse Gram (1.11%), Wheat Products (0.83%), Beverages (0.36%), Wheat (0.31%), Dry Fruits (0.10%) and Pulse Masoor (0.07%).

#### **NON-FOOD:**

**Increased:** Medical Tests (5.36%), Solid Fuel (2.51%), Dental Services (2.22%), Readymade Garments (1.60%), Transport Services (1.50%), House Rent (1.45%), Marriage Hall Charges (1.28%), Personal Grooming Services (1.20%), Cleaning & Laundry (0.98%) and Motor Fuel (0.78%).

**Decreased:** Liquified Hydrocarbons (1.10%), Postal Services (1.09%), Electricity Charges (0.79%) and Construcion Input Items (0.33%).

### YEAR-ON-YEAR: Top few commodities which varied from corresponding month of previous year i.e. January, 2024 are given below:

#### **FOOD**

**Increased:** Potatoes (45.14%), Besan (44.72%), Pulse Gram (41.73%), Pulse Moong (37.33%), Honey (23.24%), Gram Whole (21.00%), Milk Powder (20.59%), Fish (19.70%), Meat (19.50%), Vegetable Ghee (15.45%), Butter (14.92%), Fresh Fruits (12.96%), Mustard Oil (12.59%), Beans (11.89%), Sweetmeat (11.42%), Milk Fresh (11.21%), Milk Products (8.88%) and Cooking Oil (6.63%).

**Decreased:** Onions (41.69%), Wheat (34.34%), Wheat Flour (33.76%), Eggs (28.43%), Fresh Vegetables (18.75%), Wheat Products (10.97%), Tomatoes (10.54%), Pulse Masoor (9.80%), Pulse Mash (9.34%), Tea (8.04%), Rice (5.14%) and Sugar (2.62%).

#### **NON-FOOD:**

**Increased:** Motor Vehicle Tax (168.79%), Footwear (31.88%), Dental Services (26.16%), Drugs & Medicines (16.56%), Medical Tests (15.16%) and Solid Fuel (15.10%).

**Decreased:** Electricity Charges (15.6%), Motor Fuel (2.48%) and Communication Apparatus (1.19%).

### III. Rural Consumer Price Index (RCPI)

The Rural Consumer Price Index for January 2025 is increased by 0.22% over December 2024 and increased by 1.95% over corresponding month of the last year i.e. January 2024.

**Table 3: Consumer Price Index (Rural) by Group of Commodities and Services (Base 2015-16)**

No	Group	Group Weight (%)	Indices			% Change Jan 2025 Over		Impact (In % points) Jan 2025 Over	
			Jan 25	Dec 24	Jan 24	Dec 24	Jan 24	Dec 24	Jan 24
	<b>General</b>	<b>100.00</b>	<b>272.21</b>	<b>271.60</b>	<b>267.01</b>	<b>0.22</b>	<b>1.95</b>	<b>0.22</b>	<b>1.95</b>
1.	Food & Non-alcoholic Bev.	40.87	283.29	285.04	295.99	-0.61	-4.29	-0.26	-1.94
	<i>Non-perishable Food Items</i>	<i>35.08</i>	<i>285.44</i>	<i>281.07</i>	<i>295.49</i>	<i>1.55</i>	<i>-3.40</i>	<i>0.56</i>	<i>-1.32</i>
	<i>Perishable Food Items</i>	<i>5.79</i>	<i>270.25</i>	<i>309.07</i>	<i>299.00</i>	<i>-12.56</i>	<i>-9.62</i>	<i>-0.83</i>	<i>-0.62</i>
2.	Alcoholic Bev. & Tobacco	1.28	364.99	363.54	344.33	0.40	6.00	0.01	0.10
3.	Clothing & Footwear	9.48	265.62	263.86	235.68	0.67	12.70	0.06	1.06
4.	Housing, Water, Electricity, Gas & Fuels	18.49	228.04	225.79	225.61	1.00	1.08	0.15	0.17
5.	Furnishing & Household Equip. & Maintenance	4.10	290.99	289.68	274.56	0.45	5.98	0.02	0.25
6.	Health	3.51	264.82	261.49	234.48	1.27	12.94	0.04	0.40
7.	Transport	5.56	316.24	313.24	314.18	0.96	0.66	0.06	0.04
8.	Communication	1.99	128.68	128.64	127.60	0.03	0.85	0.00	0.01
9.	Recreation & Culture	1.38	308.76	307.45	276.05	0.43	11.85	0.01	0.17
10.	Education	2.13	224.34	223.51	181.78	0.37	23.41	0.01	0.34
11.	Restaurants & Hotels	6.19	290.50	287.08	264.69	1.19	9.75	0.08	0.60
12.	Miscellaneous	5.02	319.46	316.64	279.48	0.89	14.31	0.05	0.75

Main contributors to Month-on-Month and Year-on-Year percentage changes are given below and detail is given in **Annexure-B**.

**1. MONTH-ON-MONTH** Top few commodities which varied from previous month i.e. December, 2024 are given below:

#### **FOOD**

**Increased:** Chicken (33.02%), Fresh Fruits (7.82%), Pulse Moong (4.84%), Sugar (4.82%), Honey (1.74%), Pulse Masoor (1.47%), Vegetable Ghee (1.32%), Readymade Food (1.12%), Sweetmeat (0.93%), Wheat Flour (0.82%), Fish (0.75%), Cooking Oil (0.67%), Rice (0.61%), Milk Fresh (0.60%) and Dry Fruits (0.47%).

**Decreased:** Potatoes (24.09%), Onions (15.68%), Fresh Vegetables (15.28%), Eggs (9.85%), Tomatoes (5.39%), Pulse Gram (4.09%), Pulse Mash (2.93%), Besan (1.29%), Wheat (1.15%), Condiments and Spices (1.03%), Gram Whole (0.67%), Milk Powder (0.01%) and Gur (0.01%).

#### **NON-FOOD**

**Increased:** Doctor Clinic Fee (4.28%), Woolen Readymade Garments (3.63%), House Rent (1.89%), Solid Fuel (1.73%), Medical Tests (1.56%) and Transport Services (1.49%).

**Decreased:** Electricity Charges (0.79%) and Construction Input Items (0.08%).

**YEAR-ON-YEAR:** Top few commodities which varied from corresponding month of previous year i.e. January, 2024 are given below:

#### **FOOD**

**Increased:** Potatoes (49.32%), Besan (45.85%), Pulse Gram (45.24%), Pulse Moong (37.84%), Milk Powder (26.39%), Butter (22.25%), Honey (22.12%), Meat (20.81%), Fish (18.49%), Gram Whole (18.32%), Vegetable Ghee (17.65%), Cooking Oil (15.86%), Dry Fruits (12.17%), Beans (10.96%), Mustard Oil (10.65%), Milk Fresh (10.36%), Milk Products (9.17%) and Fresh Fruits (9.07%)

**Decreased:** Onions (38.92%), Wheat (35.89%), Wheat Flour (35.48%), Eggs (24.52%), Fresh Vegetables (17.82%), Wheat Products (13.00%), Tea (6.44%), Tomatoes (5.21%), Pulse Mash (5.07%), Rice (4.55%), Pulse Masoor (4.47%) and Sugar (3.50%).

#### **NON-FOOD**

**Increased:** Motor Vehicle Tax (126.61%), Education (23.41%), Dental Services (18.41%) and Drugs & Medicines (17.48%).

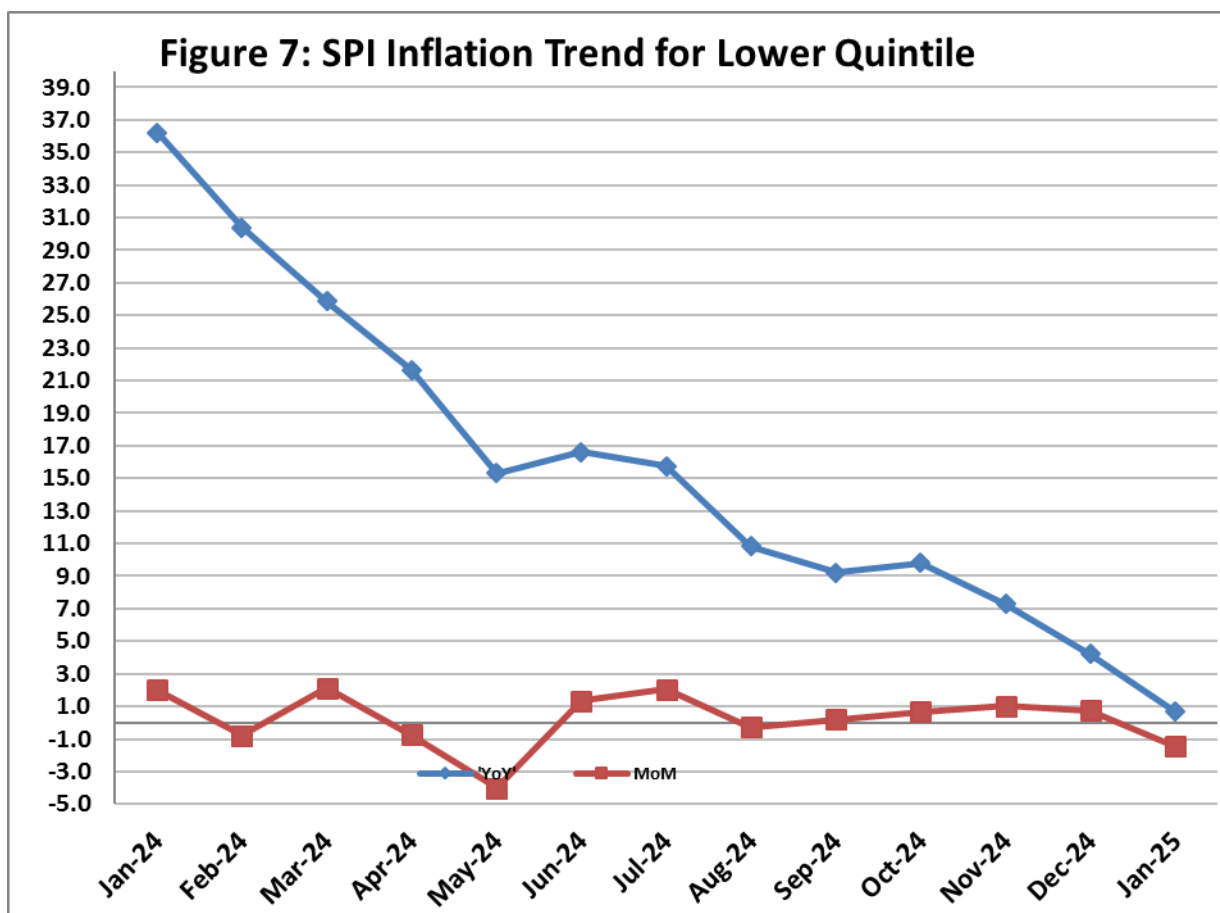
**Decreased:** Electricity Charges (15.60%) and Motor Fuels (2.92%).

## IV. Sensitive Price Indicator

Quintile-wise percentage changes YoY and MoM are given below in Table 4. The series from January 2024 to January 2025 is also graphed below in Figure 7.

Table 4: Sensitive Price Indicator (Base 2015-16)					
Quintiles	Indices			% Change Jan 2025 Over	
	Jan 2025	Dec 2024	Jan 2024	Dec 2024	Jan 2024
1	314.02	318.64	311.93	-1.45	0.67
2	311.04	315.25	309.08	-1.34	0.63
3	333.14	335.92	328.24	-0.83	1.49
4	321.86	323.61	317.09	-0.54	1.50
5	322.71	323.79	316.56	-0.33	1.94
<b>Combined</b>	<b>322.03</b>	<b>324.16</b>	<b>317.23</b>	<b>-0.66</b>	<b>1.51</b>

Table 4.1: Weekly Percentage Change of SPI During January 2025					
Quintiles	% Change over Previous week				
	02-01-2025	09-01-2025	16-01-2025	23-01-2025	30-01-2025
Quintile 1	-0.51	-1.03	-0.62	-1.04	-0.52
<b>Combined</b>	<b>-0.26</b>	<b>-0.65</b>	<b>-0.39</b>	<b>-0.77</b>	<b>-0.36</b>



## V. Wholesale Price Index

The Wholesale Price Index for **January, 2025** is increased by **0.18%** over **December 2024**. It increased by **0.63%** over the corresponding month of the last year i.e. **January, 2024**. YoY and MoM movements, from January, 2024 to January, 2025 are also graphed below in Figure 8.

**Table 5: Wholesale Price Index by Group of Commodities (Base 2015-16)**

No	Group	Group Weight (%)	Indices			% Change Jan 2025 Over		Impact (In % points) Jan 2025 Over	
			Jan 25	Dec 24	Jan 24	Dec 24	Jan 24	Dec 24	Jan 24
	<b>General</b>	<b>100.00</b>	<b>312.51</b>	<b>311.95</b>	<b>310.54</b>	<b>0.18</b>	<b>0.63</b>	<b>0.18</b>	<b>0.63</b>
1	Agriculture Forestry & Fishery	25.77	281.69	281.12	285.82	0.20	-1.44	0.05	-0.34
2	Ores/Minerals, Elec., Gas & Water	12.01	361.36	361.62	381.15	-0.07	-5.19	-0.01	-0.77
3	Food, Beverages, Tobacco, Textiles & Leather Products	31.11	278.47	276.70	262.15	0.64	6.23	0.18	1.63
	i. Food Products, Beverages & Tobacco	20.07	295.03	292.37	277.95	0.91	6.14	0.17	1.10
	ii. Textiles & Apparels	10.33	253.37	253.21	236.72	0.06	7.03	0.01	0.55
	iii. Leather Products	0.71	175.78	175.78	185.68	0.00	-5.33	0.00	-0.02
4	Other Transportable Goods	22.40	339.49	340.06	341.54	-0.17	-0.60	-0.04	-0.15
5	Metal Product, Machinery & Equipment	8.72	388.51	388.24	379.46	0.07	2.38	0.01	0.25

Main contributors to month-on-month and year-on-year percentage changes are given below and detail is given in **Annexure-C**.

### 1. **MONTH-ON-MONTH:** Top few commodities which varied from previous month are given below:

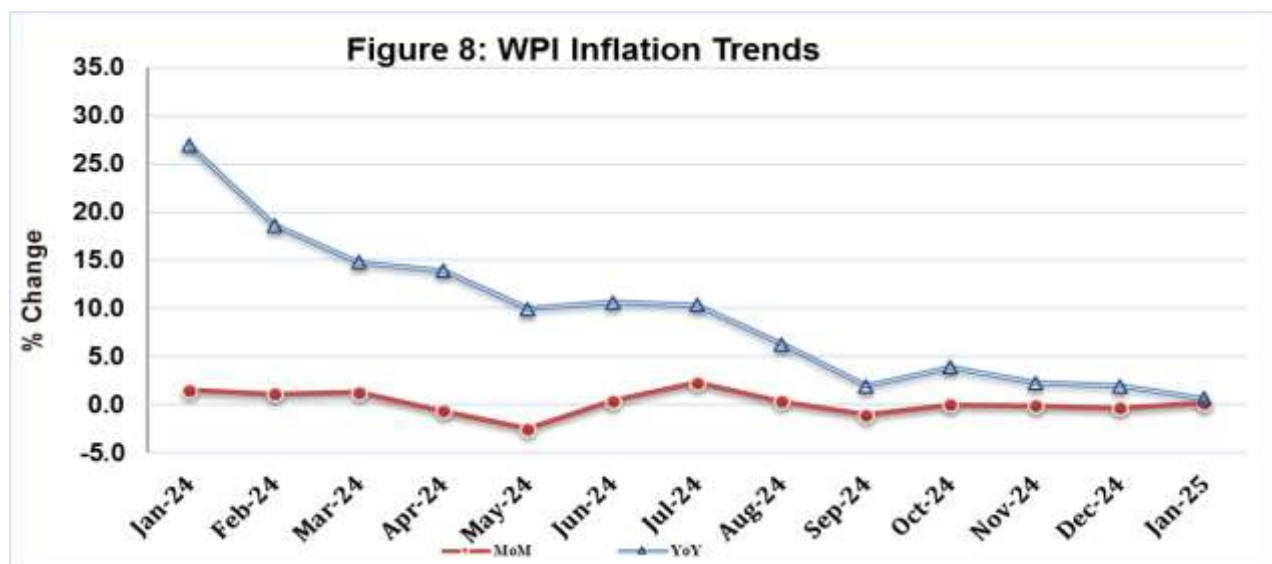
**Increased:** Poultry (37.76%), Millet / Bajra (12.71%), Sugar Crops (10.18%), Engines & Motors (9.26%), Lathe Machines (7.25%), Fibre Crops (6.12%), Sugar Refined (5.63%), Other Food Products (5.44%), Hides, Skins & Fur Skins, Raw (4.62%), Fresh Fruits (3.30%), Chuff Cutter (2.83%), Vegetable Ghee (2.80%), Dry Fruits (2.73%), Fuel Wood in Logs (2.09%) and Meat of Animals (1.49%).

**Decreased:** Edible Roots / Potatoes (41.49%), Vegetables (19.06%), Eggs (15.68%), Pesticides (9.84%), Stimulant & Spice Crops (6.99%), Sorghum / Jowar (6.72%), Pipe Fittings (3.84%), Other Cereal Flour (2.30%), Cement (2.16%), Other Oil Seeds (2.11%), Furnace Oil (1.10%) and Wheat (1.03%).

### **YEAR-ON-YEAR:** Top few commodities which varied from previous year are given below:

**Increased:** Raw Animal Materials / Wool (84.60%), Other Cereal Flour (41.99%), Edible Roots / Potatoes (36.14%), Sugar Confectionary (31.99%), Maize (30.78%), Millet / Bajra (26.22%), Processed Liquid Milk (25.60%), Hard Board (25.00%), Hides, Skins & Fur Skins, Raw (23.80%), Dyeing Material (23.72%), Other Fabrics (22.54%), Bed Sheets (21.74%), Electric Wires (21.31%) and Vegetable Ghee (21.27%).

**Decreased:** Wheat (36.62%), Vegetables (36.48%), Wheat Flour (33.96%), Eggs (32.43%), Spices (18.98%), Kerosene Oil (11.58%), Stimulant & Spice Crops (11.00%), Electrical Energy (10.98%) and Steel Bar & Sheets (8.60%).



**Annexure A: CPI (Urban) Index Numbers by Commodity Groups & Commodities (2015-16=100)**

Item and Specification	Weight	Index Numbers			% Change in Jan 2025 over	
		Jan 25	Dec 24	Jan 24	Dec 2024	Jan 2024
<b>General</b>	<b>100.0000</b>	<b>262.17</b>	<b>261.67</b>	<b>255.22</b>	<b>+ 0.19</b>	<b>+ 2.72</b>
<b>Food and non-alcoholic Beverages</b>	<b>30.4215</b>	<b>278.37</b>	<b>279.90</b>	<b>284.23</b>	<b>- 0.55</b>	<b>- 2.06</b>
01 Wheat	0.6120	239.73	240.47	365.12	- 0.31	- 34.34
02 Wheat flour	3.0075	238.03	237.45	359.34	+ 0.24	- 33.76
03 Wheat products	0.0936	289.03	291.44	324.65	- 0.83	- 10.97
04 Besan	0.0830	305.48	312.98	211.09	- 2.40	+ 44.72
05 Rice	1.1804	310.41	309.73	327.22	+ 0.22	- 5.14
06 Bakery and confectionary	0.4770	264.66	264.44	267.75	+ 0.08	- 1.15
07 Nimco	0.1224	295.60	295.40	281.34	+ 0.07	+ 5.07
08 Meat	2.0411	327.14	326.19	273.76	+ 0.29	+ 19.50
09 Chicken	1.3631	316.64	234.10	313.57	+ 35.26	+ 0.98
10 Fish	0.3855	219.12	217.77	183.05	+ 0.62	+ 19.70
11 Milk fresh	7.1070	262.53	259.98	236.06	+ 0.98	+ 11.21
12 Milk products	0.6407	265.77	265.64	244.09	+ 0.05	+ 8.88
13 Milk powder	0.3106	303.35	303.02	251.56	+ 0.11	+ 20.59
14 Eggs	0.5083	338.87	394.02	473.47	- 14.00	- 28.43
15 Butter	0.0932	401.94	396.71	349.75	+ 1.32	+ 14.92
16 Mustard oil	0.0120	324.74	319.64	288.42	+ 1.60	+ 12.59
17 Cooking oil	1.1016	332.42	319.87	311.76	+ 3.92	+ 6.63
18 Vegetable ghee	1.0324	352.75	343.79	305.54	+ 2.61	+ 15.45
19 Dry fruits	0.3299	297.23	297.52	280.41	- 0.10	+ 6.00
20 Fresh fruits	1.4363	216.54	206.21	191.69	+ 5.01	+ 12.96
21 Pulse masoor	0.1624	206.79	206.94	229.26	- 0.07	- 9.80
22 Pulse moong	0.1697	249.15	236.31	181.42	+ 5.43	+ 37.33
23 Pulse mash	0.1152	208.82	214.47	230.33	- 2.63	- 9.34
24 Pulse gram	0.1660	299.37	302.73	211.23	- 1.11	+ 41.73
25 Gram whole	0.0912	310.11	314.63	256.28	- 1.44	+ 21.00
26 Beans	0.0408	388.80	386.38	347.47	+ 0.63	+ 11.89
27 Potatoes	0.4496	354.62	493.04	244.33	- 28.07	+ 45.14
28 Onions	0.5928	293.83	341.58	503.91	- 13.98	- 41.69
29 Tomatoes	0.3459	275.30	347.16	307.74	- 20.70	- 10.54
30 Fresh vegetables	1.5306	230.73	288.32	283.99	- 19.97	- 18.75
31 Sugar	1.1130	225.78	217.31	231.86	+ 3.90	- 2.62
32 Gur	0.0379	241.77	241.32	236.39	+ 0.19	+ 2.28
33 Honey	0.1017	217.74	214.16	176.68	+ 1.67	+ 23.24
34 Sweetmeat	0.3535	322.82	317.01	289.73	+ 1.83	+ 11.42
35 Ice cream	0.1044	199.45	199.45	198.48	+ 0.00	+ 0.49
36 Condiments and Spices	1.3340	334.59	334.36	315.19	+ 0.07	+ 6.16
37 Dessert preparation	0.0419	270.14	270.14	264.27	+ 0.00	+ 2.22
38 Tea	0.8427	332.73	332.73	361.83	+ 0.00	- 8.04
39 Beverages	0.8906	253.86	254.77	238.57	- 0.36	+ 6.41
<b>Alcoholic Beverages, Tobacco</b>	<b>0.8540</b>	<b>406.23</b>	<b>405.62</b>	<b>385.76</b>	<b>+ 0.15</b>	<b>+ 5.31</b>
40 Cigarettes	0.7167	401.22	401.03	384.62	+ 0.05	+ 4.32
41 Pan prepared	0.1373	432.40	429.58	391.70	+ 0.66	+ 10.39
<b>Clothing and footwear</b>	<b>8.0096</b>	<b>246.32</b>	<b>245.42</b>	<b>213.55</b>	<b>+ 0.37</b>	<b>+ 15.35</b>
42 Cotton cloth	2.2227	280.55	280.39	245.13	+ 0.06	+ 14.45
43 Woolen cloth	0.8361	236.95	235.97	213.22	+ 0.42	+ 11.13
44 Readymade garments	1.3196	212.42	209.07	193.86	+ 1.60	+ 9.57
45 Woolen readymade garments	0.4307	257.10	256.69	230.16	+ 0.16	+ 11.70
46 Tailoring	1.0741	229.72	229.09	208.77	+ 0.28	+ 10.03
47 Hosiery	0.4070	234.38	233.67	205.32	+ 0.30	+ 14.15
48 Dopatta	0.1713	199.95	199.76	177.25	+ 0.10	+ 12.81
49 Cleaning and laundering	0.0665	265.97	263.39	250.04	+ 0.98	+ 6.37
50 Footwear	1.4816	247.08	246.93	187.35	+ 0.06	+ 31.88
<b>Housing, water, Elec., Gas and other Fuels</b>	<b>27.0332</b>	<b>245.50</b>	<b>244.15</b>	<b>241.33</b>	<b>+ 0.55</b>	<b>+ 1.73</b>
51 House rent	19.2558	168.09	165.69	160.17	+ 1.45	+ 4.94
52 Construction input items	0.3765	265.06	265.94	258.59	- 0.33	+ 2.50
53 Construction wage rates	0.2025	221.55	221.36	212.13	+ 0.09	+ 4.44
54 Water supply	0.5269	228.99	228.99	199.06	+ 0.00	+ 15.04
55 Garbage collection	0.1064	261.72	261.28	243.95	+ 0.17	+ 7.28
56 Electricity charges	4.5562	270.31	272.45	320.26	- 0.79	- 15.60
57 Gas charges	1.0807	1479.08	1479.08	1344.19	+ 0.00	+ 10.04
58 Liquified Hydrocarbons	0.5064	353.81	357.75	339.32	- 1.10	+ 4.27

**Annexure A: CPI (Urban) Index Numbers by Commodity Groups & Commodities (2015-16=100)**

Item and Specification	Weight	Index Numbers			% Change in Jan 2025 over			
		Jan 25	Dec 24	Jan 24	Dec 2024	Jan 2024		
59 Solid Fuel	0.4218	231.37	225.71	201.02	+	2.51	+	15.10
<b><i>Furnishing and household equipments</i></b>	<b>4.0937</b>	<b>264.44</b>	<b>263.20</b>	<b>253.34</b>	<b>+</b>	<b>0.47</b>	<b>+</b>	<b>4.38</b>
60 Furniture and furnishing	0.4750	256.78	254.91	237.67	+	0.73	+	8.04
61 Carpets	0.0308	150.80	150.75	147.94	+	0.03	+	1.93
62 Household textiles	0.3420	208.18	207.66	182.37	+	0.25	+	14.15
63 Household equipments	1.0032	264.71	263.75	250.74	+	0.36	+	5.57
64 Plastic products	0.0536	219.27	217.79	204.11	+	0.68	+	7.43
65 Major tools & equipments	0.0084	238.70	237.52	221.17	+	0.50	+	7.93
66 Washing soap/detergents/match	1.4112	320.23	318.22	318.08	+	0.63	+	0.68
67 Household servant	0.7695	199.47	199.33	187.19	+	0.07	+	6.56
<b><i>Health</i></b>	<b>2.3098</b>	<b>270.50</b>	<b>268.54</b>	<b>234.72</b>	<b>+</b>	<b>0.73</b>	<b>+</b>	<b>15.24</b>
68 Drugs and medicines	1.0735	292.08	291.11	250.58	+	0.33	+	16.56
69 Therapeutic Appliances and Equipments	0.0054	154.74	154.64	147.38	+	0.06	+	4.99
70 Doctor (MBBS) clinic fee	0.4044	333.70	332.67	292.60	+	0.31	+	14.05
71 Dental services	0.0156	222.14	217.31	176.08	+	2.22	+	26.16
72 Medical tests	0.2367	212.30	201.50	184.35	+	5.36	+	15.16
73 Hospitals services	0.5742	212.04	211.27	187.50	+	0.36	+	13.09
<b><i>Transport</i></b>	<b>6.1368</b>	<b>302.43</b>	<b>300.02</b>	<b>300.26</b>	<b>+</b>	<b>0.80</b>	<b>+</b>	<b>0.72</b>
74 Motor vehicles	0.8097	259.37	259.37	254.51	+	0.00	+	1.91
75 Motor vehicle accessories	0.1941	263.88	263.75	250.34	+	0.05	+	5.41
76 Motor fuel	2.9088	348.32	345.61	357.18	+	0.78	-	2.48
77 Mechanical services	0.4290	230.98	230.93	218.14	+	0.02	+	5.89
78 Motor vehicle tax	0.0482	399.23	399.23	148.53	+	0.00	+	168.79
79 Transport services	1.7470	265.13	261.21	256.60	+	1.50	+	3.32
<b><i>Communication</i></b>	<b>2.3536</b>	<b>138.38</b>	<b>138.40</b>	<b>138.73</b>	<b>-</b>	<b>0.01</b>	<b>-</b>	<b>0.25</b>
80 Postal services	0.0190	218.04	220.45	207.37	-	1.09	+	5.15
81 Communication apparatus	0.4524	188.43	188.41	190.69	+	0.01	-	1.19
82 Communication Services	1.8822	125.55	125.55	125.55	+	0.00	+	0.00
<b><i>Recreation and culture</i></b>	<b>1.7301</b>	<b>260.67</b>	<b>260.51</b>	<b>246.06</b>	<b>+</b>	<b>0.06</b>	<b>+</b>	<b>5.94</b>
83 Recreation and culture	0.6478	154.82	154.56	148.69	+	0.17	+	4.12
84 Text books	0.6655	332.81	332.81	314.48	+	0.00	+	5.83
85 Newspapers	0.0716	216.94	216.94	211.87	+	0.00	+	2.39
86 stationery	0.3452	329.33	329.01	304.00	+	0.10	+	8.33
<b><i>Education</i></b>	<b>4.8807</b>	<b>200.02</b>	<b>199.96</b>	<b>187.42</b>	<b>+</b>	<b>0.03</b>	<b>+</b>	<b>6.72</b>
87 Education	4.8807	200.02	199.96	187.42	+	0.03	+	6.72
<b><i>Restaurants and hotels</i></b>	<b>7.4050</b>	<b>279.39</b>	<b>277.24</b>	<b>262.77</b>	<b>+</b>	<b>0.78</b>	<b>+</b>	<b>6.32</b>
88 Readymade food	5.5235	286.90	285.08	269.53	+	0.64	+	6.44
89 Marriage Hall Charges	1.7514	263.83	260.50	248.73	+	1.28	+	6.07
90 Accommodation Services	0.1301	169.69	169.66	164.52	+	0.02	+	3.14
<b><i>Misc. goods and services</i></b>	<b>4.7720</b>	<b>294.76</b>	<b>292.40</b>	<b>267.64</b>	<b>+</b>	<b>0.81</b>	<b>+</b>	<b>10.13</b>
91 Personal Grooming Services	0.8001	256.74	253.70	234.38	+	1.20	+	9.54
92 Electrical Appliances for Per	0.0465	177.26	177.15	161.58	+	0.06	+	9.70
93 Appliances/Articles/Products	2.9807	269.20	266.74	254.55	+	0.92	+	5.76
94 Personal Effects n.e.c.	0.9447	413.40	411.80	342.32	+	0.39	+	20.76



**Annexure B: CPI (Rural) Index Numbers by Commodity Groups & Commodities (2015-16=100)**

Item and Specification	Weight	Index Numbers			% Change in Jan 2025 over			
		Jan 25	Dec 24	Jan 24	Dec 2024	Jan 2024		
<b>General</b>	<b>100.0000</b>	<b>272.21</b>	<b>271.60</b>	<b>267.01</b>	<b>+</b>	<b>0.22</b>	<b>+</b>	<b>1.95</b>
<b>Food and non-alcoholic Beverages</b>	<b>40.8668</b>	<b>283.29</b>	<b>285.04</b>	<b>295.99</b>	<b>-</b>	<b>0.61</b>	<b>-</b>	<b>4.29</b>
01 Wheat	3.4736	239.57	242.36	373.71	-	1.15	-	35.89
02 Wheat Flour	3.4297	238.55	236.62	369.73	+	0.82	-	35.48
03 Wheat Products	0.1068	289.20	288.63	332.41	+	0.20	-	13.00
04 Besan	0.0728	324.65	328.88	222.59	-	1.29	+	45.85
05 Rice	1.5501	413.33	410.83	433.03	+	0.61	-	4.55
06 Bakery and Confectionary	0.3702	306.32	305.11	302.82	+	0.40	+	1.16
07 Nimco	0.0774	305.01	303.64	288.81	+	0.45	+	5.61
08 Meat	1.7146	339.25	338.96	280.81	+	0.09	+	20.81
09 Chicken	1.4641	327.03	245.85	315.21	+	33.02	+	3.75
10 Fish	0.2640	237.59	235.83	200.51	+	0.75	+	18.49
11 Milk fresh	10.3803	259.40	257.85	235.05	+	0.60	+	10.36
12 Milk products	0.9624	257.12	256.93	235.52	+	0.07	+	9.17
13 Milk powder	0.1062	275.87	275.91	218.27	-	0.01	+	26.39
14 Eggs	0.5665	350.20	388.48	463.97	-	9.85	-	24.52
15 Butter	0.3333	306.27	306.16	250.53	+	0.04	+	22.25
16 Mustard oil	0.0136	339.82	338.70	307.12	+	0.33	+	10.65
17 Cooking oil	0.6011	373.85	371.36	322.66	+	0.67	+	15.86
18 Vegetable ghee	2.3764	384.33	379.32	326.68	+	1.32	+	17.65
19 Dry fruits	0.2496	362.19	360.48	322.88	+	0.47	+	12.17
20 Fresh fruits	1.4505	223.18	207.00	204.63	+	7.82	+	9.07
21 Pulse Masoor	0.2076	233.80	230.41	244.74	+	1.47	-	4.47
22 Pulse Moong	0.2510	267.75	255.39	194.24	+	4.84	+	37.84
23 Pulse Mash	0.1465	226.34	233.18	238.42	-	2.93	-	5.07
24 Pulse Gram	0.2751	311.88	325.17	214.74	-	4.09	+	45.24
25 Gram Whole	0.1116	323.36	325.53	273.30	-	0.67	+	18.32
26 Beans	0.0896	409.11	408.24	368.71	+	0.21	+	10.96
27 Potatoes	0.7437	385.83	508.25	258.40	-	24.09	+	49.32
28 Onions	0.8965	282.20	334.68	462.02	-	15.68	-	38.92
29 Tomatoes	0.5069	281.04	297.04	296.49	-	5.39	-	5.21
30 Fresh Vegetables	2.0947	251.59	296.97	306.16	-	15.28	-	17.82
31 Sugar	2.0296	226.15	215.76	234.36	+	4.82	-	3.50
32 Gur	0.1522	239.16	239.19	239.57	-	0.01	-	0.17
33 Honey	0.0296	222.19	218.40	181.94	+	1.74	+	22.12
34 Sweetmeat	0.3967	287.86	285.20	269.35	+	0.93	+	6.87
35 Ice Cream	0.0568	199.34	199.34	197.95	+	0.00	+	0.70
36 Condiments and Spices	1.4919	296.03	299.10	280.20	-	1.03	+	5.65
37 Dessert Preparation	0.0133	268.52	268.52	269.02	+	0.00	-	0.19
38 Tea	1.2566	333.85	333.85	356.84	+	0.00	-	6.44
39 Beverages	0.5537	245.04	244.48	231.09	+	0.23	+	6.04
<b>Alcoholic Beverages, Tobacco</b>	<b>1.2786</b>	<b>364.99</b>	<b>363.54</b>	<b>344.33</b>	<b>+</b>	<b>0.40</b>	<b>+</b>	<b>6.00</b>
40 Cigarettes	1.2364	365.23	364.02	345.19	+	0.33	+	5.81
41 Pan Prepared	0.0422	357.98	349.58	319.23	+	2.40	+	12.14
<b>Clothing and footwear</b>	<b>9.4826</b>	<b>265.62</b>	<b>263.86</b>	<b>235.68</b>	<b>+</b>	<b>0.67</b>	<b>+</b>	<b>12.70</b>
42 Cotton Cloth	2.8381	292.21	291.70	249.56	+	0.17	+	17.09
43 Woolen Cloth	1.0959	258.11	256.06	232.36	+	0.80	+	11.08
44 Readymade Garments	1.1345	238.71	236.32	217.97	+	1.01	+	9.52
45 Woolen Readymade Garments	0.5401	309.66	298.80	265.49	+	3.63	+	16.64
46 Tailoring	1.2999	245.65	245.26	221.72	+	0.16	+	10.79
47 Hosiery	0.4322	343.63	340.20	313.60	+	1.01	+	9.58
48 Dopatta	0.2078	244.52	242.71	221.75	+	0.75	+	10.27
49 Cleaning and Laundering	0.0176	251.35	251.35	248.58	+	0.00	+	1.11
50 Footwear	1.9165	232.41	231.35	212.40	+	0.46	+	9.42
<b>Housing, water, Elec., Gas and other Fuels</b>	<b>18.4853</b>	<b>228.04</b>	<b>225.79</b>	<b>225.61</b>	<b>+</b>	<b>1.00</b>	<b>+</b>	<b>1.08</b>
51 House Rent	8.6110	175.84	172.58	166.06	+	1.89	+	5.89
52 Construction Input Items	0.6306	254.64	254.85	228.43	-	0.08	+	11.47
53 Construction Wage Rates	0.2526	238.90	238.26	222.59	+	0.27	+	7.33
54 Water Supply	0.0645	311.91	311.91	292.34	+	0.00	+	6.69
55 Garbage Collection	0.0080	199.91	199.62	189.52	+	0.15	+	5.48
56 Electricity Charges	3.4431	270.31	272.45	320.26	-	0.79	-	15.60
57 Liquified Hydrocarbons	0.9994	319.75	319.27	317.08	+	0.15	+	0.84
58 Solid Fuel	4.4761	269.97	265.39	245.83	+	1.73	+	9.82

**Annexure B: CPI (Rural) Index Numbers by Commodity Groups & Commodities (2015-16=100)**

Item and Specification	Weight	Index Numbers			% Change in Jan 2025 over			
		Jan 25	Dec 24	Jan 24	Dec 2024	Jan 2024		
<b><i>Furnishing and household equipments</i></b>	<b>4.1031</b>	<b>290.99</b>	<b>289.68</b>	<b>274.56</b>	<b>+</b>	<b>0.45</b>	<b>+</b>	<b>5.98</b>
59 Furniture and Furnishing	0.5786	285.49	283.25	249.49	+	0.79	+	14.43
60 Household Textiles	0.4382	240.76	239.72	219.57	+	0.43	+	9.65
61 Household Equipments	1.2774	286.42	285.36	265.99	+	0.37	+	7.68
62 Plastic Products	0.0776	292.58	291.12	257.44	+	0.50	+	13.65
63 Major Tools and Equipments	0.0324	238.97	236.51	217.78	+	1.04	+	9.73
64 Washing Soaps, Detergents and	1.6989	310.16	308.94	305.59	+	0.39	+	1.50
<b><i>Health</i></b>	<b>3.5141</b>	<b>264.82</b>	<b>261.49</b>	<b>234.48</b>	<b>+</b>	<b>1.27</b>	<b>+</b>	<b>12.94</b>
65 Drugs and Medicines	1.5792	315.35	313.71	268.43	+	0.52	+	17.48
66 Doctor Clinic Fee	0.5128	300.90	288.55	279.73	+	4.28	+	7.57
67 Dental Services	0.0181	223.06	219.90	188.38	+	1.44	+	18.41
68 Medical Tests	0.3967	223.28	219.85	211.09	+	1.56	+	5.77
69 Hospitals Services	1.0073	184.34	182.98	168.25	+	0.74	+	9.56
<b><i>Transport</i></b>	<b>5.5580</b>	<b>316.24</b>	<b>313.24</b>	<b>314.18</b>	<b>+</b>	<b>0.96</b>	<b>+</b>	<b>0.66</b>
70 Motor Vehicles	0.7305	193.15	193.13	192.76	+	0.01	+	0.20
71 Motor Vehicles Accessories	0.1572	269.51	269.12	258.45	+	0.14	+	4.28
72 Motor Fuels	2.4932	349.17	346.28	359.68	+	0.83	-	2.92
73 Mechanical Services	0.3645	230.99	229.81	221.45	+	0.51	+	4.31
74 Motor Vehicle Tax	0.0174	342.03	342.03	150.93	+	0.00	+	126.61
75 Transport Services	1.7952	341.75	336.74	325.70	+	1.49	+	4.93
<b><i>Communication</i></b>	<b>1.9940</b>	<b>128.68</b>	<b>128.64</b>	<b>127.60</b>	<b>+</b>	<b>0.03</b>	<b>+</b>	<b>0.85</b>
76 Postal Services	0.0070	179.32	179.32	179.32	+	0.00	+	0.00
77 Communication Apparatus	0.3362	161.60	161.39	155.20	+	0.13	+	4.12
78 Communication Services	1.6508	121.76	121.76	121.76	+	0.00	+	0.00
<b><i>Recreation and culture</i></b>	<b>1.3764</b>	<b>308.76</b>	<b>307.45</b>	<b>276.05</b>	<b>+</b>	<b>0.43</b>	<b>+</b>	<b>11.85</b>
79 Recreation and Culture	0.4763	248.84	247.20	217.18	+	0.66	+	14.58
80 Text Books	0.5047	360.47	360.47	327.72	+	0.00	+	9.99
81 Newspapers	0.0230	242.52	242.52	242.52	+	0.00	+	0.00
82 Stationery	0.3724	319.40	316.65	283.38	+	0.87	+	12.71
<b><i>Education</i></b>	<b>2.1342</b>	<b>224.34</b>	<b>223.51</b>	<b>181.78</b>	<b>+</b>	<b>0.37</b>	<b>+</b>	<b>23.41</b>
83 Education	2.1342	224.34	223.51	181.78	+	0.37	+	23.41
<b><i>Restaurants and hotels</i></b>	<b>6.1895</b>	<b>290.50</b>	<b>287.08</b>	<b>264.69</b>	<b>+</b>	<b>1.19</b>	<b>+</b>	<b>9.75</b>
84 Readymade Food	3.8001	316.28	312.79	290.55	+	1.12	+	8.86
85 Marriage Hall Charges	2.2525	257.77	254.26	230.35	+	1.38	+	11.90
86 Accommodation Services	0.1369	113.40	113.40	112.13	+	0.00	+	1.13
<b><i>Misc. goods and services</i></b>	<b>5.0174</b>	<b>319.46</b>	<b>316.64</b>	<b>279.48</b>	<b>+</b>	<b>0.89</b>	<b>+</b>	<b>14.31</b>
87 Personal Grooming Services	1.5363	306.05	303.83	281.74	+	0.73	+	8.63
88 Appliances/Articles/Products	2.2746	261.93	258.84	238.93	+	1.19	+	9.63
89 Personal Effects n.e.c.	1.2065	445.01	441.92	353.05	+	0.70	+	26.05

**Annexure C: Wholesale Price Indices by Major Groups & Commodities (2015-16=100)**

Item and Specification	Weight	Index Numbers			% Change in Jan 2025 over	
		Jan 25	Dec 24	Jan 24	Dec 2024	Jan 2024
<b>General</b>	<b>100.0000</b>	<b>312.51</b>	<b>311.95</b>	<b>310.54</b>	<b>+ 0.18</b>	<b>+ 0.63</b>
<b>Agriculture Forestry &amp; Fishery</b>	<b>25.7674</b>	<b>281.69</b>	<b>281.12</b>	<b>285.82</b>	<b>+ 0.20</b>	<b>- 1.44</b>
001 Wheat	0.6297	233.24	235.66	368.01	- 1.03	- 36.62
002 Maize	0.6764	281.54	282.26	215.28	- 0.26	+ 30.78
003 Rice	2.4413	329.67	329.07	356.12	+ 0.18	- 7.43
004 Sorghum / Jowar	0.0214	267.64	286.93	280.03	- 6.72	- 4.42
005 Millet / Bajra	0.0374	308.40	273.62	244.34	+ 12.71	+ 26.22
006 Vegetables	1.2441	284.45	351.42	447.82	- 19.06	- 36.48
007 Fresh Fruits	1.5144	237.23	229.66	200.18	+ 3.30	+ 18.51
008 Dry Fruits	0.2478	365.41	355.71	322.38	+ 2.73	+ 13.35
009 Cotton Seeds	1.1511	201.02	201.42	172.67	- 0.20	+ 16.42
010 Other Oil Seeds	0.0722	286.03	292.20	277.77	- 2.11	+ 2.97
011 Edible Roots / Potatoes	0.2540	394.51	674.25	289.78	- 41.49	+ 36.14
012 Stimulant & Spice Crops	0.1634	332.30	357.29	373.38	- 6.99	- 11.00
013 Pulses	0.4901	293.40	294.34	269.26	- 0.32	+ 8.97
014 Sugar Crops	1.0725	305.35	277.13	273.77	+ 10.18	+ 11.54
015 Fibre Crops	5.3169	349.84	329.68	362.34	+ 6.12	- 3.45
016 Unmanufactured Tobacco	0.0742	564.24	570.07	521.36	- 1.02	+ 8.22
017 Poultry	0.5633	308.80	224.16	317.44	+ 37.76	- 2.72
018 Raw Milk from Bovine Animals	7.0279	247.86	246.78	226.55	+ 0.44	+ 9.41
019 Eggs	0.5034	328.69	389.80	486.43	- 15.68	- 32.43
020 Raw Animal Materials / Wool	0.0351	251.59	251.59	136.29	+ 0.00	+ 84.60
021 Hides, Skins & Fur Skins, Raw	0.4834	59.81	57.17	48.31	+ 4.62	+ 23.80
022 Fuel Wood in Logs	0.0179	215.39	210.99	183.72	+ 2.09	+ 17.24
023 Fish Live Fresh or Chilled	1.7295	226.98	228.56	214.76	- 0.69	+ 5.69
<b>Ores/Minerals, Elec., Gas &amp; Water</b>	<b>12.0069</b>	<b>361.36</b>	<b>361.62</b>	<b>381.15</b>	<b>- 0.07</b>	<b>- 5.19</b>
024 Coal not Agglomerated	0.7508	227.51	227.51	194.29	+ 0.00	+ 17.10
025 Natural Gas Liquified	5.7065	420.30	420.77	429.16	- 0.11	- 2.06
026 Salt & Pure Sodium Chloride	0.0584	407.92	407.15	353.50	+ 0.19	+ 15.39
027 Electrical Energy	5.4912	317.91	318.00	357.11	- 0.03	- 10.98
<b>Food, Beverages, Tobacco, Textil</b>	<b>31.1122</b>	<b>278.47</b>	<b>276.70</b>	<b>262.15</b>	<b>+ 0.64</b>	<b>+ 6.23</b>
<b>Food Products, Beverages &amp; Tobacco</b>	<b>20.0718</b>	<b>295.03</b>	<b>292.37</b>	<b>277.95</b>	<b>+ 0.91</b>	<b>+ 6.14</b>
028 Meat of Animals	3.4559	322.41	317.69	274.86	+ 1.49	+ 17.30
029 Vegetables & Fruit Juice	0.0058	250.48	250.48	237.76	+ 0.00	+ 5.35
030 Dried Fruits & Nuts	0.1733	390.92	390.20	386.35	+ 0.18	+ 1.18
031 Fruit Juices	0.3880	270.77	270.91	254.91	- 0.05	+ 6.22
032 Vegetable Oils Refined	1.9242	287.93	287.74	271.51	+ 0.07	+ 6.05
033 Vegetable Ghee	1.5632	375.71	365.49	309.82	+ 2.80	+ 21.27
034 Oil Cakes	0.9611	267.83	269.66	270.11	- 0.68	- 0.84
035 Processed Liquid Milk	4.4437	320.15	320.15	254.89	+ 0.00	+ 25.60
036 Milk & Cream in Solid Form	0.0316	289.97	289.09	258.37	+ 0.30	+ 12.23
037 Ice Cream	0.0047	200.56	200.56	198.75	+ 0.00	+ 0.91
038 Dairy Products N.E.C	0.0117	325.97	325.53	270.15	+ 0.14	+ 20.66
039 Wheat Flour	2.3034	237.86	237.93	360.18	- 0.03	- 33.96
040 Other Cereal Flour	0.0604	323.87	331.50	228.10	- 2.30	+ 41.99
041 Sugar Refined	1.7975	230.93	218.62	234.42	+ 5.63	- 1.49
042 Chocolate	0.0139	143.40	143.40	122.88	+ 0.00	+ 16.70
043 Sugar Confectionary	0.0738	312.20	310.37	236.53	+ 0.59	+ 31.99
044 Coffee & Tea	0.7303	281.01	280.87	276.73	+ 0.05	+ 1.55
045 Spices	0.1449	300.86	300.82	371.35	+ 0.01	- 18.98
046 Other Food Products	0.0336	248.60	235.77	231.04	+ 5.44	+ 7.60
047 Mineral Water	0.0207	206.22	206.22	209.52	+ 0.00	- 1.58
048 Beverages	0.6303	260.59	260.40	255.65	+ 0.07	+ 1.93
049 Tobacco Products	1.2998	280.52	280.52	259.58	+ 0.00	+ 8.07
<b>Textiles &amp; Apparels</b>	<b>10.3289</b>	<b>253.37</b>	<b>253.21</b>	<b>236.72</b>	<b>+ 0.06</b>	<b>+ 7.03</b>
050 Cotton Yarn	5.2491	239.61	239.61	239.61	+ 0.00	+ 0.00
051 Nylon Yarn	0.1719	95.24	95.24	95.24	+ 0.00	+ 0.00
052 Blended Yarn	0.1689	148.12	148.12	148.12	+ 0.00	+ 0.00
053 Woven Fabrics	0.0128	255.78	255.78	237.72	+ 0.00	+ 7.60
054 Cotton Fabrics	0.6343	339.15	338.00	282.53	+ 0.34	+ 20.04
055 Other Fabrics	1.1016	259.21	259.18	211.53	+ 0.01	+ 22.54
056 Silk & Reyon Fabrics	0.7350	398.81	397.67	349.68	+ 0.29	+ 14.05
057 Towels	0.1235	202.83	202.83	193.86	+ 0.00	+ 4.63

**Annexure C: Wholesale Price Indices by Major Groups & Commodities (2015-16=100)**

Item and Specification	Weight	Index Numbers			% Change in Jan 2025 over	
		Jan 25	Dec 24	Jan 24	Dec 2024	Jan 2024
058 Blankets	0.0029	158.72	158.72	145.65	+ 0.00	+ 8.97
059 Bed Sheets	0.0913	203.39	203.39	167.07	+ 0.00	+ 21.74
060 Quilts	0.0019	243.00	243.00	234.52	+ 0.00	+ 3.62
061 Woolen Carpets	0.0383	177.15	177.15	173.86	+ 0.00	+ 1.89
062 Synthetic Carpets	0.0566	156.16	156.16	150.83	+ 0.00	+ 3.53
063 Hosiery Products	0.8832	204.74	204.65	191.34	+ 0.04	+ 7.00
064 Readymade Garments	1.0576	264.59	264.59	235.81	+ 0.00	+ 12.20
<b>Leather Products</b>	<b>0.7115</b>	<b>175.78</b>	<b>175.78</b>	<b>185.68</b>	<b>+ 0.00</b>	<b>- 5.33</b>
065 Leather Without Hair	0.2973	167.33	167.33	181.35	+ 0.00	- 7.73
066 Other Leather N.E.C	0.2567	142.17	142.17	158.95	+ 0.00	- 10.56
067 Footwears	0.1575	246.48	246.48	237.41	+ 0.00	+ 3.82
<b>Other Transportable Goods</b>	<b>22.3979</b>	<b>339.49</b>	<b>340.06</b>	<b>341.54</b>	<b>- 0.17</b>	<b>- 0.60</b>
068 Timber	0.0165	237.52	236.67	224.80	+ 0.36	+ 5.66
069 Printing Paper	0.4279	258.64	258.64	239.03	+ 0.00	+ 8.20
070 Hard Board	0.1579	261.62	261.62	209.29	+ 0.00	+ 25.00
071 Motor Spirit	1.6268	360.41	357.06	373.46	+ 0.94	- 3.49
072 Diesel Oil	5.4849	326.81	323.77	350.88	+ 0.94	- 6.86
073 Kerosene Oil	0.2151	325.75	323.55	368.41	+ 0.68	- 11.58
074 Furnace Oil	3.2664	544.34	550.39	572.56	- 1.10	- 4.93
075 Mobil Oil	0.7114	251.76	251.76	236.05	+ 0.00	+ 6.66
076 Chemicals	1.7720	264.34	264.76	285.24	- 0.16	- 7.33
077 Dyeing Material	0.1539	272.52	272.52	220.27	+ 0.00	+ 23.72
078 Fertilizers	2.8657	271.70	271.22	258.11	+ 0.18	+ 5.27
079 Pesticides	0.2763	211.30	234.35	186.07	- 9.84	+ 13.56
080 Insecticides	0.1276	174.37	174.37	151.05	+ 0.00	+ 15.44
081 Paints & Varnishes	0.1916	278.01	278.01	269.25	+ 0.00	+ 3.25
082 Medicines	1.1428	371.31	370.51	321.67	+ 0.22	+ 15.43
083 Soaps & Detergents	0.8168	237.49	238.02	226.32	- 0.22	+ 4.94
084 Auto Tyres	0.2703	262.09	261.90	246.66	+ 0.07	+ 6.26
085 Plastic Products	0.4550	204.95	204.95	193.13	+ 0.00	+ 6.12
086 Glass sheets	0.2089	383.08	377.72	355.31	+ 1.42	+ 7.82
087 Other Glass Articles	0.1635	215.98	215.81	208.89	+ 0.08	+ 3.39
088 Ceramics & Sanitary Fixture	0.0244	226.07	224.17	204.97	+ 0.85	+ 10.29
089 Bricks, Blocks & Tiles	0.1566	204.62	206.65	192.88	- 0.98	+ 6.09
090 Cement	1.8145	284.03	290.29	243.32	- 2.16	+ 16.73
091 Bed Foam	0.0006	333.84	335.53	332.28	- 0.50	+ 0.47
092 Matches	0.0505	3329.35	3329.35	3319.19	+ 0.00	+ 0.31
<b>Metal Product, Machinery &amp; Equipments</b>	<b>8.7156</b>	<b>388.51</b>	<b>388.24</b>	<b>379.46</b>	<b>+ 0.07</b>	<b>+ 2.38</b>
093 Steel Bar & Sheets	1.4615	321.85	322.03	352.15	- 0.06	- 8.60
094 Pipe Fittings	0.0780	485.91	505.32	428.38	- 3.84	+ 13.43
095 Steel Products	0.3879	276.50	275.75	244.45	+ 0.27	+ 13.11
096 Engines & Motors	0.0046	204.19	186.89	186.89	+ 9.26	+ 9.26
097 Vacuum Pumps	0.0155	107.56	107.56	107.56	+ 0.00	+ 0.00
098 Air Conditioners	0.0049	309.58	309.58	313.62	+ 0.00	- 1.29
099 Cultivators	0.0551	351.39	351.39	361.67	+ 0.00	- 2.84
100 Chuff Cutter	0.1293	519.00	504.72	504.72	+ 2.83	+ 2.83
101 Tractors	0.0028	320.14	320.14	297.43	+ 0.00	+ 7.64
102 Lathe Machines	0.0525	523.49	488.10	467.20	+ 7.25	+ 12.05
103 Concrete Mixture	0.0107	426.37	426.37	369.25	+ 0.00	+ 15.47
104 Fridge,WashM,SewM,Fans,Iron	1.1645	304.01	304.01	279.25	+ 0.00	+ 8.87
105 Electric Wires	0.0912	338.91	338.91	279.37	+ 0.00	+ 21.31
106 Lighting Equipments	1.4431	757.41	757.41	728.27	+ 0.00	+ 4.00
107 Radio & Television	0.1843	190.53	190.53	196.21	+ 0.00	- 2.89
108 Motor Vehicles	0.0244	256.95	256.95	254.58	+ 0.00	+ 0.93
109 Motorcycles	0.2570	263.76	263.76	263.76	+ 0.00	+ 0.00
110 Bicycles	3.3483	316.55	316.55	308.80	+ 0.00	+ 2.51

\*\*\*\*\*