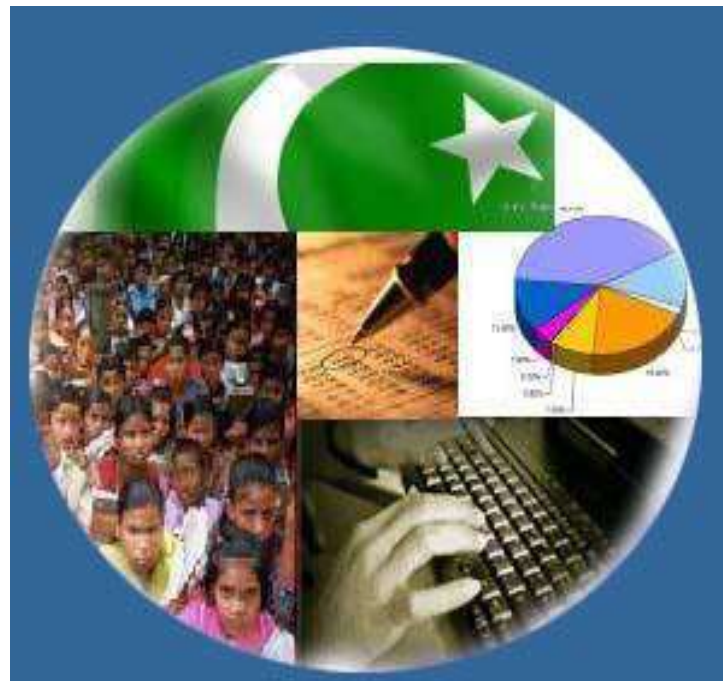




Monthly Review on Price Indices



December 2024
(Base Year 2015-16)

Government of Pakistan
Ministry of Planning, Development & Special Initiatives
Pakistan Bureau of Statistics
Islamabad

PRICE STATISTICS TEAM

S#	Name	Designation
1.	Dr. Naeem Uz Zafar (S.I)	Chief Statistician
2.	Dr. Bahrawar Jan	Deputy Director General
3.	Mr. Naseer Ahmad	Director
4.	Dr. Ahtasham Gul	Chief Statistical Officer
5.	Mr. Adnan Shams	Statistical Officer
6.	Mr. Kashif Ali	Statistical Officer
7.	Miss. Umaira Zareen	Statistical Officer
8.	Mr. Abdul Qadir	Statistical Officer
9.	Mrs. Safia Akram	Statistical Officer
10.	Mrs. Faiza Razzaq	Statistical Officer
12.	Mr. Umer Farooq	Statistical Assistant
13.	Mr. Ansar Mahmood	Statistical Assistant
14.	Mrs. Madiha Gulfraz	Statistical Assistant
15.	Mrs. Humail Fatima	Statistical Assistant
16.	Mr. Muhammad Asif	Statistical Assistant

IT & SOFTWARE TEAM

1.	Mr. Muhammad Sarwar Gondal (S.I)	Member (Support Services)
2.	Mr. Muhammad Ehtesham	Director (DP)
3.	Mrs. Sobia Munawar	Director (DP)
4.	Mr. Arsalan Bashir	Data Processing Officer
5.	Mr. Muhammad Kibria	Data Processing Officer

Inflation in Brief

- CPI inflation General**, decreased to 4.1% on year-on-year basis in December 2024 as compared to 4.9% in the previous month and 29.7% in December 2023. On month-on-month basis, it increased by 0.1% in December 2024 as compared to 0.5% in the previous month and an increase of 0.8% in December 2023.
- CPI inflation Urban**, decreased to 4.4% on year-on-year basis in December 2024 as compared to 5.2% in the previous month and 30.9% in December 2023. On month-on-month basis, it decreased by 0.1% in December 2024 as compared to 0.5% in the previous month and an increase of 0.7% in December 2023.
- CPI inflation Rural**, decreased to 3.6% on year-on-year basis in December 2024 as compared to 4.3% in the previous month and 27.9% in December 2023. On month-on-month basis, it increased by 0.3% in December 2024 as compared to 0.5% in the previous month and an increase of 1.0% in December 2023.
- SPI inflation** on YoY decreased to 4.2% in December 2024 as compared to 7.3% a month earlier and 35.3% in December 2023. On MoM basis, it increased by 0.8% in December 2024 as compared to 1.0% a month earlier and an increase of 3.8% in December 2023.
- WPI inflation** on YoY basis decreased to 1.9% in December 2024 as compared to 2.3% a month earlier and an increase of 27.3% in December 2023. On MoM basis, it decreased by 0.4% in December 2024 as compared to a decrease of 0.1% in the previous month and no change was observed in corresponding month of last year i.e. December 2023.
- Figures 1 and 2 show graphically the yearly data of Table 1.a for Urban and Rural CPI while Table 1.1 shows "Period Average" and "YoY" percentage changes in indices of three years.

Table 1.a General Inflation (%) (Base 2015-16)																		
PERIOD	CPI														SPI**		WPI	
	General						Food				Non-Food							
	National		Urban		Rural		Urban		Rural		Urban		Rural		YoY	MoM	YoY	MoM
	YoY	MoM	YoY	MoM	YoY	MoM	YoY	MoM	YoY	MoM	YoY	MoM	YoY	MoM	YoY	MoM	YoY	MoM
Mar-23	35.4	3.7	33.0	3.9	38.9	3.5	47.1	5.6	50.2	4.5	24.1	2.7	28.5	2.4	40.4	5.8	37.5	4.7
Apr-23	36.4	2.4	33.5	2.0	40.7	3.0	46.8	3.4	52.2	4.2	24.9	1.0	29.9	1.6	42.1	2.7	33.4	0.1
May-23	38.0	1.6	35.1	1.5	42.2	1.7	48.1	1.9	52.4	1.4	26.6	1.2	32.5	2.0	43.0	1.3	32.8	1.0
Jun-23	29.4	-0.3	27.3	0.1	32.4	-0.8	40.8	0.1	41.5	-1.6	18.7	0.1	23.8	0.1	34.9	0.2	22.4	-0.3
Jul-23	28.3	3.5	26.3	3.6	31.3	3.3	40.2	3.7	41.3	3.5	17.3	3.5	22.0	3.0	29.3	2.8	23.1	2.5
Aug-23	27.4	1.7	25.0	1.6	30.9	1.9	38.8	0.6	40.6	0.8	16.3	2.4	22.0	3.1	27.9	4.1	24.3	4.2
Sep-23	31.4	2.0	29.7	1.7	33.9	2.5	33.9	1.5	35.4	1.8	26.8	1.8	32.3	3.2	32.0	1.7	26.4	3.1
Oct-23	26.8	1.0	25.5	1.1	28.7	0.9	28.9	0.6	28.6	0.7	23.1	1.4	28.8	1.1	34.2	0.2	24.6	-1.9
Nov-23	29.2	2.7	30.4	4.3	27.5	0.4	29.8	0.8	29.2	1.0	30.9	7.0	25.9	-0.2	30.6	3.3	26.4	1.4
Dec-23	29.7	0.8	30.9	0.7	27.9	1.0	28.8	-0.7	29.3	0.1	32.4	1.8	26.4	1.8	35.3	3.8	27.3	0.0
Jan-24	28.3	1.8	30.2	1.8	25.7	1.9	27.4	2.8	25.1	2.3	32.3	1.1	26.3	1.4	36.2	2.0	27.0	1.5
Feb-24	23.1	0.0	24.9	0.2	20.5	-0.3	20.2	-1.5	19.0	-1.1	28.2	1.5	22.1	0.6	30.4	-0.8	18.7	1.1
Mar-24	20.7	1.7	21.9	1.4	19.0	2.1	16.6	2.4	17.1	2.8	25.8	0.7	21.0	1.4	25.9	2.1	14.8	1.3
Apr-24	17.3	-0.4	19.4	-0.1	14.5	-0.9	11.3	-1.3	9.5	-2.6	25.6	0.8	20.0	0.8	21.6	-0.7	13.9	-0.7
May-24	11.8	-3.2	14.3	-2.8	8.2	-3.9	2.2	-6.3	-0.1	-7.4	23.6	-0.4	17.2	-0.4	15.3	-4.0	9.9	-2.5
Jun-24	12.6	0.5	14.9	0.6	9.3	0.3	2.6	0.4	1.3	-0.2	24.3	0.7	17.9	0.8	16.6	1.3	10.6	0.4
July-24	11.1	2.1	13.2	2.0	8.1	2.2	3.4	4.5	1.3	3.6	20.7	0.5	15.5	0.9	15.7	2.0	10.4	2.3
Aug-24	9.6	0.4	11.7	0.3	6.7	0.6	4.1	1.3	1.9	1.3	17.4	-0.4	11.9	-0.2	10.8	-0.3	6.3	0.3
Sep-24	6.9	-0.5	9.3	-0.5	3.6	-0.5	1.7	-0.8	-0.9	-1.0	15.0	-0.3	8.4	-0.1	9.2	0.2	1.9	-1.1
Oct-24	7.2	1.2	9.3	1.1	4.2	1.5	2.7	1.6	0.6	2.2	14.2	0.7	8.0	0.8	9.7	0.6	3.9	0.0
Nov-24	4.9	0.5	5.2	0.5	4.3	0.5	1.7	-0.2	-0.2	0.2	7.8	1.0	9.1	0.8	7.3	1.0	2.3	-0.1
Dec-24	4.1	0.1	4.4	-0.1	3.6	0.3	2.5	0.1	-0.2	0.1	5.7	-0.2	7.6	0.5	4.2	0.8	1.9	-0.4

** SPI for quintile 1. Digits 0.0* are due to rounding off.

Core inflation (NFNE)

7. Measured by **non-food non-energy Urban** decreased to 8.1% on (YoY) basis in December 2024 as compared to 8.9% in the previous month and 18.2% in December 2023. On (MoM) basis, it increased by 0.2% in December 2024 as compared to 1.2% in previous month and an increase of 0.8% in corresponding month of last year i.e. December, 2023.
8. Measured by **non-food non-energy Rural** decreased to 10.7% on (YoY) basis in December 2024 as compared to 10.9% in the previous month and 25.1% in December 2023. On (MoM) basis, it increased by 0.6% in December 2024 as compared to an increase of 0.7% in previous month and an increase of 0.9% in corresponding month of last year i.e. December 2023.

Core inflation (Trimmed)

9. Measured by 20% **weighted trimmed mean Urban** decreased to 6.2% on (YoY) basis in December 2024 as compared to 7.5% in the previous month and 23.3% in December 2023. On (MoM) basis, it increased by 0.1% in December 2024 as compared to 0.6% in the previous month and an increase of 0.3% in corresponding month of last year i.e. December 2023.
10. Measured by 20% **weighted trimmed mean Rural** decreased to 6.5% on (YoY) basis in December 2024 as compared 7.8% in the previous month and 28.0% in December 2023. On (MoM) basis, it increased by 0.6% in December 2024 as compared to 0.5% in the previous month and an increase of 0.7% in corresponding month of last year i.e. December 2023.

Table 1.b Core Inflation (%) (Base 2015-16)

Period	NFNE				Trimmed			
	Urban		Rural		Urban		Rural	
	YoY	MoM	YoY	MoM	YoY	MoM	YoY	MoM
Dec-23	18.2	0.8	25.1	0.9	23.3	0.3	28.0	0.7
Jan-24	17.8	1.1	24.6	1.2	22.1	1.0	25.8	1.2
Feb-24	15.5	0.3	21.9	0.4	16.0	0.3	21.3	0.4
Mar-24	12.8	0.1	20.0	0.8	14.8	0.6	18.4	0.9
Apr-24	13.1	2.1	19.3	2.0	13.4	0.5	15.0	0.6
May-24	12.3	0.4	17.0	0.5	11.0	-0.5	10.6	-0.9
June-24	12.2	0.6	17.0	0.9	10.3	0.6	11.0	0.5
July-24	11.7	0.7	16.9	1.1	10.3	1.2	11.3	1.7
Aug-24	10.2	0.4	14.4	0.6	8.0	0.2	9.6	0.4
Sep-24	9.3	0.2	12.1	0.5	7.1	-0.1	7.4	-0.1
Oct-24	8.6	0.6	11.7	0.7	6.4	0.7	7.2	1.0
Nov-24	8.9	1.2	10.9	0.7	7.5	0.6	7.8	0.5
Dec-24	8.1	0.2	10.7	0.6	6.2	0.1	6.5	0.6

Table 1.1 Period Average and Y-o-Y % Change

INDEX	Average July - December % Changes			December over December % Changes		
	2024-2025	2023-2024	2022-2023	2024-2025	2023-2024	2022-2023
CPI (National)	7.22	28.79	25.02	4.07	29.66	24.47
CPI (Urban)	8.74	27.99	23.09	4.38	30.93	21.59
CPI (Rural)	5.08	29.95	27.89	3.62	27.86	28.76
SPI	9.36	31.58	28.21	4.21	35.32	27.79
WPI	4.38	25.37	34.10	1.93	27.33	27.11

Figure 1: Urban Inflation - YoY, Special Indices

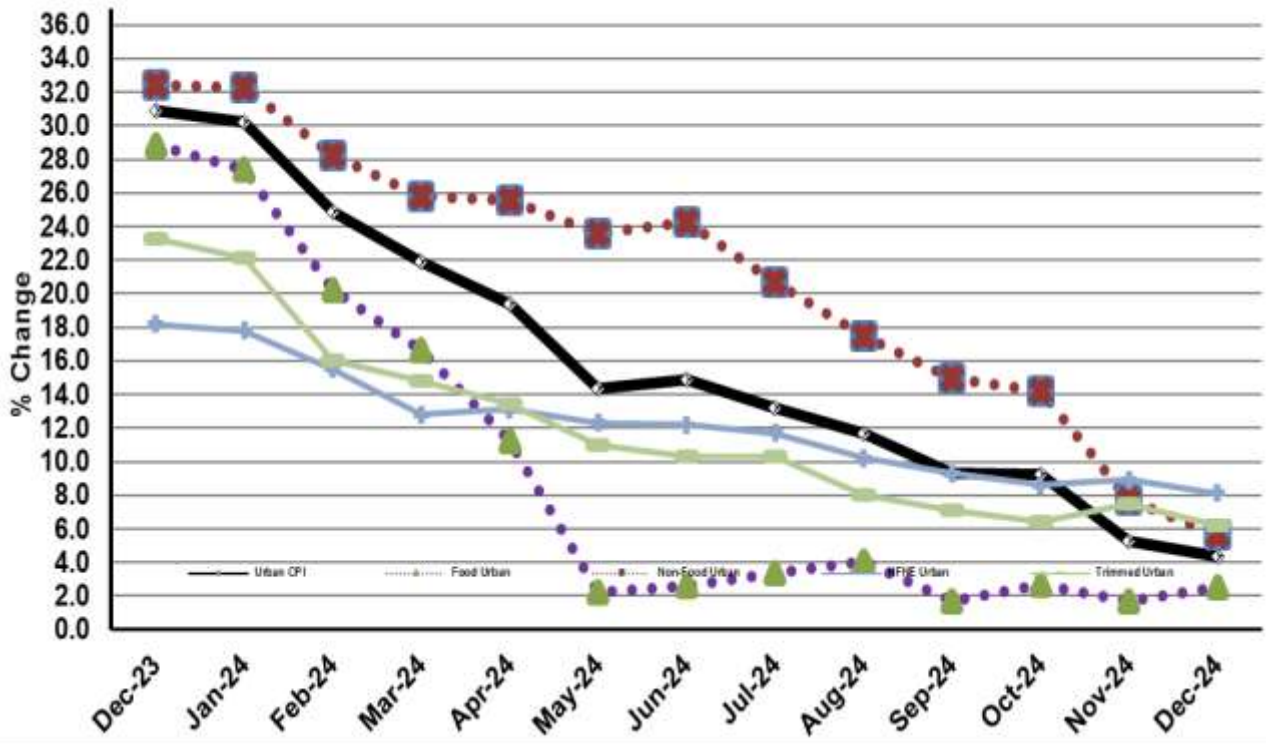


Figure 2: Rural Inflation - YoY, Special Indices



Figure 3: Urban Inflation - MoM, Special Indices

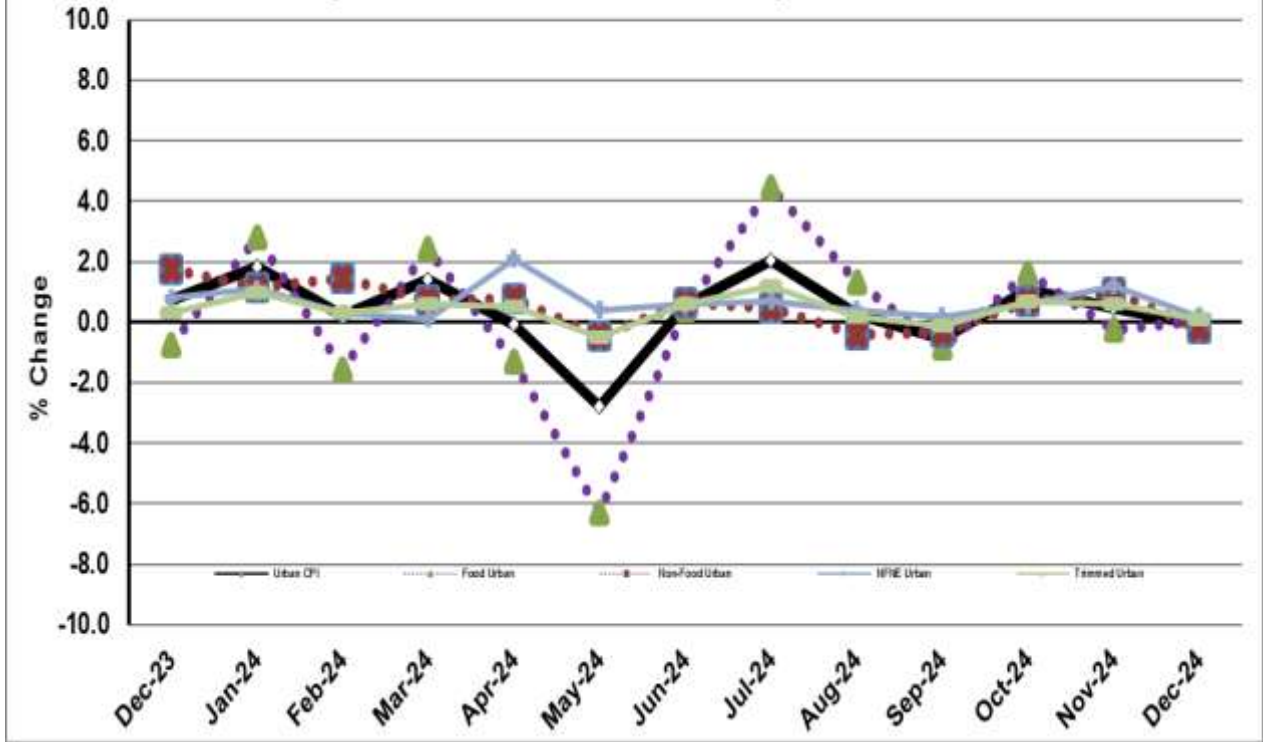


Figure 4: Rural Inflation - MoM, Special Indices

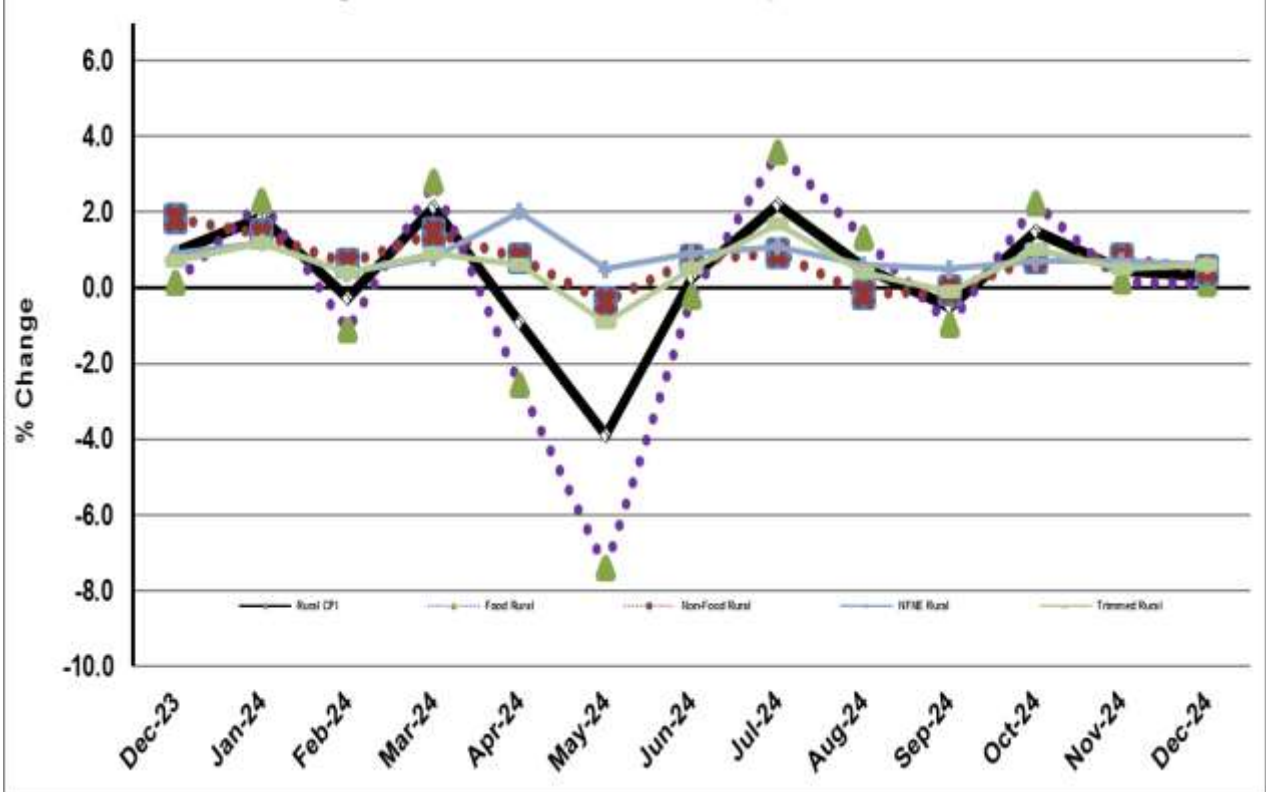


Figure 5: CPI YoY (National, Urban, Rural)

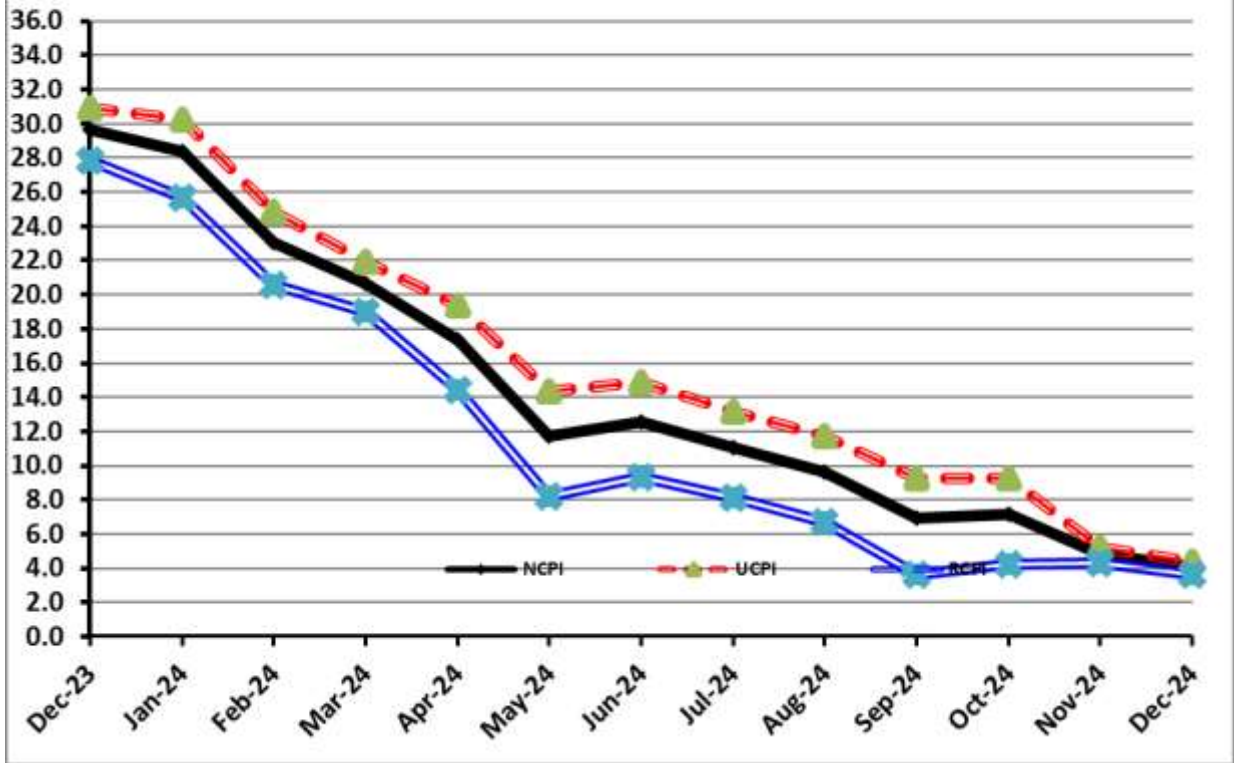
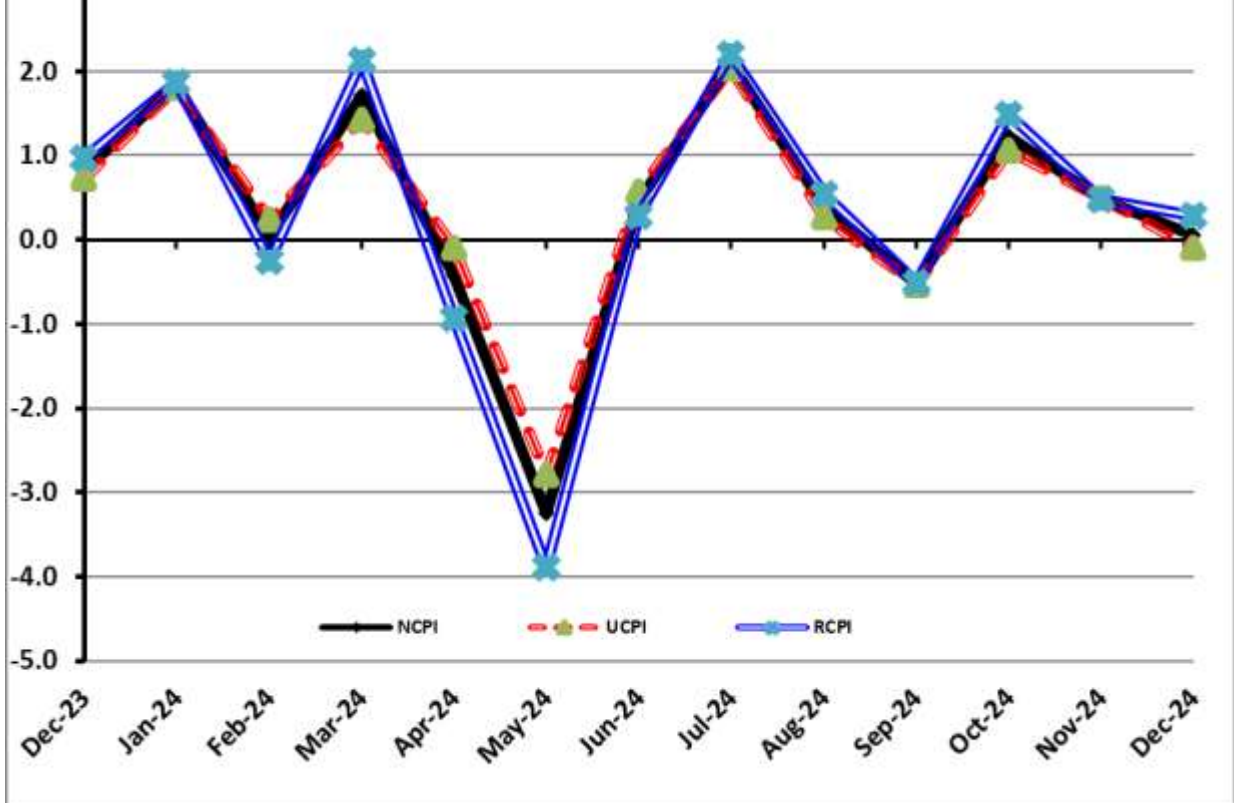


Figure 6: CPI MoM (National, Urban, Rural)



I. National Consumer Price Index (N-CPI)

The **National Consumer Price Index** for **December 2024** is increased by **0.06%** over **November 2024** and increased by **4.07%** over corresponding month of the last year i.e. **December 2023**.

Table 1: Consumer Price Index (National) by Group of Commodities and Services (Base 2015-16)

No	Group	Group Weight (%)	Indices			% Change Dec 2024 Over		Impact (In % points) Dec 2024 Over	
			Dec 24	Nov 24	Dec 23	Nov 24	Dec 23	Nov 24	Dec 23
	General	100.00	265.63	265.46	255.24	0.06	4.07	0.06	4.07
1.	Food & Non-alcoholic Bev.	34.58	282.32	282.28	281.55	0.01	0.27	0.01	0.10
	<i>Non-perishable Food Items</i>	29.60	279.03	278.50	282.99	0.19	-1.40	0.06	-0.46
	<i>Perishable Food Items</i>	4.99	301.87	304.72	272.99	-0.94	10.58	-0.05	0.56
2.	Alcoholic Bev. & Tobacco	1.02	384.67	382.59	364.72	0.54	5.47	0.01	0.08
3.	Clothing & Footwear	8.60	253.53	252.06	221.64	0.58	14.39	0.05	1.07
4.	Housing, Water, Electricity, Gas & Fuels	23.63	238.43	240.27	230.62	-0.77	3.38	-0.16	0.72
5.	Furnishing & Household Equipment Maintenance	4.10	273.77	273.28	260.36	0.18	5.15	0.01	0.22
6.	Health	2.79	265.00	262.62	233.93	0.91	13.28	0.02	0.34
7.	Transport	5.91	304.98	301.79	312.86	1.05	-2.52	0.07	-0.18
8.	Communication	2.21	134.89	134.88	120.20	0.00	12.22	0.00	0.13
9.	Recreation & Culture	1.59	276.71	275.78	256.21	0.34	8.00	0.01	0.13
10.	Education	3.79	205.25	205.21	186.04	0.02	10.32	0.00	0.28
11.	Restaurants & Hotels	6.92	280.75	279.75	260.16	0.36	7.91	0.03	0.56
12.	Miscellaneous	4.87	302.35	300.78	269.77	0.52	12.08	0.03	0.62

II. Urban Consumer Price Index (UCPI)

The Urban Consumer Price Index for **December 2024** is decreased by **0.10%** over **November 2024** and increased to **4.38%** over corresponding month of the last year i.e. **December 2023**.

Table 2: Consumer Price Index (Urban) by Group of Commodities and Services (Base 2015-16)

No	Group	Group Weight (%)	Indices			% Change Dec 2024 Over		Impact (In % points) Dec 2024 Over	
			Dec 24	Nov 24	Dec 23	Nov 24	Dec 23	Nov 24	Dec 23
	General	100.00	261.67	261.92	250.68	-0.10	4.38	-0.10	4.38
1.	Food & Non-alcoholic Bev.	30.42	279.90	279.93	275.22	-0.01	1.70	0.00	0.57
	<i>Non-perishable Food Items</i>	25.97	277.20	277.31	277.10	-0.04	0.04	-0.01	0.01
	<i>Perishable Food Items</i>	4.46	295.67	295.15	264.26	0.18	11.89	0.01	0.56
2.	Alcoholic Bev. & Tobacco	0.85	405.62	403.16	385.43	0.61	5.24	0.01	0.07
3.	Clothing & Footwear	8.01	245.42	244.54	212.48	0.36	15.50	0.03	1.05
4.	Housing, Water, Electricity, Gas & Fuels	27.03	244.15	246.49	236.27	-0.95	3.34	-0.24	0.85
5.	Furnishing & Household Equip. & Maintenance	4.09	263.20	264.13	252.29	-0.35	4.32	-0.01	0.18
6.	Health	2.31	268.54	267.04	234.20	0.56	14.66	0.01	0.32
7.	Transport	6.14	300.02	296.81	305.96	1.08	-1.94	0.08	-0.15
8.	Communication	2.35	138.40	138.39	125.01	0.01	10.71	0.00	0.13
9.	Recreation & Culture	1.73	260.51	260.05	245.92	0.18	5.93	0.00	0.10
10.	Education	4.88	199.96	199.91	187.28	0.03	6.77	0.00	0.25
11.	Restaurants & Hotels	7.41	277.24	276.36	260.11	0.32	6.59	0.02	0.51
12.	Miscellaneous	4.77	292.40	291.88	265.25	0.18	10.24	0.01	0.52

Main contributors to month-on-month and year-on-year percentage changes are given below and detail is given in **Annexure-A**.

1. **MONTH-ON-MONTH** Top few commodities which varied from previous month i.e. **November, 2024** are given below:

FOOD

Increased: Potatoes (12.42%), Fresh Fruits (8.84%), Vegetable Ghee (5.42%), Cooking Oil (4.39%), Mustard Oil (2.96%), Honey (2.69%), Sugar (2.00%), Fish (1.82%), Eggs (1.01%), Meat (0.81%), Beans (0.56%), Dry Fruits (0.32%), Wheat (0.27%), Beverages (0.23%), Pulse Moong (0.20%), Milk Products (0.05%), Milk Powder (0.03%) and Milk Fresh (0.02%).

Decreased: Chicken (13.06%), Pulse Gram (6.94%), Onions (4.91%), Tomatoes (3.28%), Condiments and Spices (2.60%), Pulse Mash (2.59%), Besan (2.55%), Fresh Vegetables (2.27%), Gram Whole (1.49%), Wheat Flour (0.99%), Pulse Masoor (0.75%), Rice (0.74%), Gur (0.50%) and Wheat Products (0.36%).

NON-FOOD:

Increased: Solid Fuel (4.98%), Household Textiles (4.61%), Woolen Readymade Garments (4.07%), Liquefied Hydrocarbons (3.76%), Major Tools & Equipments (1.52%), Transport Services (1.48%) and Motor Fuel (1.25%).

Decreased: Electricity Charges (5.68%) and Construction Input Items (0.06%).

YEAR-ON-YEAR: Top few commodities which varied from corresponding month of previous year i.e. **December, 2023** are given below:

FOOD

Increased: Pulse Gram (54.25%), Besan (52.15%), Tomatoes (44.71%), Potatoes (37.03%), Pulse Moong (34.50%), Fish (25.47%), Gram Whole (24.16%), Honey (22.75%), Meat (21.38%), Milk Powder (20.64%), Butter (14.14%), Beans (13.79%), Fresh Fruits (11.49%), Vegetable Ghee (11.29%), Mustard Oil (10.63%), Dry Fruits (10.50%), Sweetmeat (10.30%), Milk fresh (10.21%) and Fresh Vegetables (9.96%).

Decreased: Wheat (33.82%), Wheat Flour (33.77%), Onions (13.32%), Wheat Products (10.07%), Pulse Masoor (9.21%), Pulse Mash (5.89%), Rice (4.62%), Sugar (3.57%), Tea (3.51%), Eggs (2.45%) and Chicken (1.87%).

NON-FOOD:

Increased: Motor Vehicle Tax (168.79%), Footwear (31.86%), Woolen Readymade Garments (19.16%), Drugs and Medicines (16.35%), Communication Services (15.68%), Household Textiles (15.11%), Water Supply (15.04%), Hosiery (14.61%) and Solid Fuel (14.46%).

Decreased: Electricity Charges (9.44%), Motor Fuel (6.61%) and Communication Apparatus (0.88%).

III. Rural Consumer Price Index (RCPI)

The Rural Consumer Price Index for December 2024 is increased by 0.29% over November 2024 and increased to 3.62% over corresponding month of the last year i.e. December 2023.

Table 3: Consumer Price Index (Rural) by Group of Commodities and Services (Base 2015-16)

No	Group	Group Weight (%)	Indices			% Change Dec 2024 Over		Impact (In % points) Dec 2024 Over	
			Dec 24	Nov 24	Dec 23	Nov 24	Dec 23	Nov 24	Dec 23
	General	100.00	271.60	270.81	262.11	0.29	3.62	0.29	3.62
1.	Food & Non-alcoholic Bev.	40.87	285.04	284.92	288.66	0.04	-1.25	0.02	-0.57
	<i>Non-perishable Food Items</i>	<i>35.08</i>	<i>281.07</i>	<i>279.82</i>	<i>289.57</i>	<i>0.45</i>	<i>-2.94</i>	<i>0.16</i>	<i>-1.14</i>
	<i>Perishable Food Items</i>	<i>5.79</i>	<i>309.07</i>	<i>315.84</i>	<i>283.14</i>	<i>-2.14</i>	<i>9.16</i>	<i>-0.14</i>	<i>0.57</i>
2.	Alcoholic Bev. & Tobacco	1.28	363.54	361.85	343.84	0.47	5.73	0.01	0.10
3.	Clothing & Footwear	9.48	263.86	261.64	233.32	0.85	13.09	0.08	1.11
4.	Housing, Water, Electricity, Gas & Fuels	18.49	225.79	226.55	218.16	-0.34	3.50	-0.05	0.54
5.	Furnishing & Household Equip. & Maintenance	4.10	289.68	287.05	272.51	0.92	6.30	0.04	0.27
6.	Health	3.51	261.49	258.24	233.67	1.26	11.91	0.04	0.37
7.	Transport	5.56	313.24	310.10	324.36	1.01	-3.43	0.06	-0.24
8.	Communication	1.99	128.64	128.64	111.63	0.00	15.24	0.00	0.13
9.	Recreation & Culture	1.38	307.45	305.61	275.74	0.60	11.50	0.01	0.17
10.	Education	2.13	223.51	223.51	181.78	0.00	22.96	0.00	0.34
11.	Restaurants & Hotels	6.19	287.08	285.88	260.26	0.42	10.31	0.03	0.63
12.	Miscellaneous	5.02	316.64	313.56	276.26	0.98	14.62	0.06	0.77

Main contributors to Month-on-Month and Year-on-Year percentage changes are given below and detail is given in **Annexure-B**.

1. MONTH-ON-MONTH Top few commodities which varied from previous month i.e. November, 2024 are given below:

FOOD

Increased: Honey (7.97%), Potatoes (5.68%), Vegetable Ghee (4.73%), Eggs (4.57%), Cooking Oil (4.38%), Fish (3.62%), Mustard Oil (3.44%), Dry Fruits (3.35%), Fresh Fruits (2.93%), Pulse Moong (1.68%), Sugar (1.48%) and Milk Fresh (0.75%).

Decreased: Chicken (12.54%), Tomatoes (7.83%), Fresh Vegetables (4.57%), Pulse Gram (3.88%), Onions (3.04%), Pulse Mash (2.83%), Condiments and Spices (2.42%), Pulse Masoor (1.85%), Gram Whole (1.36%), Besan (0.93%), Wheat Flour (0.59%), Wheat Products (0.52%), Rice (0.05%) and Milk Powder (0.01%).

NON-FOOD

Increased: Solid Fuel (3.23%), Household Textiles (2.53%), Furniture and Furnishing (2.41%), Footwear (2.18%), Drugs & Medicines (2.16%) and Motor Fuels (1.35%).

Decreased: Electricity Charges (5.68%).

YEAR-ON-YEAR: Top few commodities which varied from corresponding month of previous year i.e. December, 2023 are given below:

FOOD

Increased: Pulse Gram (61.36%), Besan (50.66%), Pulse Moong (36.14%), Potatoes (32.05%), Milk Powder (26.61%), Butter (24.91%), Tomatoes (24.35%), Honey (22.70%), Fish (22.13%), Meat (21.49%), Gram Whole (21.19%), Beans (15.53%), Vegetable Ghee (15.44%), Cooking Oil (14.11%), Dry Fruits (13.03%), Mustard Oil (10.96%), Milk Products (10.42%), Milk Fresh (9.95%), Readymade Food (8.35%) and Condiments & Spices (8.13%)

Decreased: Wheat Flour (35.55%), Wheat (34.11%), Wheat Products (12.89%), Tea (5.93%), Sugar (5.64%), Onions (5.10%), Rice (4.70%), Pulse Masoor (3.78%), Chicken (2.49%) and Pulse Mash (0.40%).

NON-FOOD

Increased: Motor Vehicle Tax (126.61%), Education (22.96%), Communication Services (18.70%), Cotton Cloth (17.91%), Drugs & Medicines (17.58%) and Woolen Readymade Garments (16.95%).

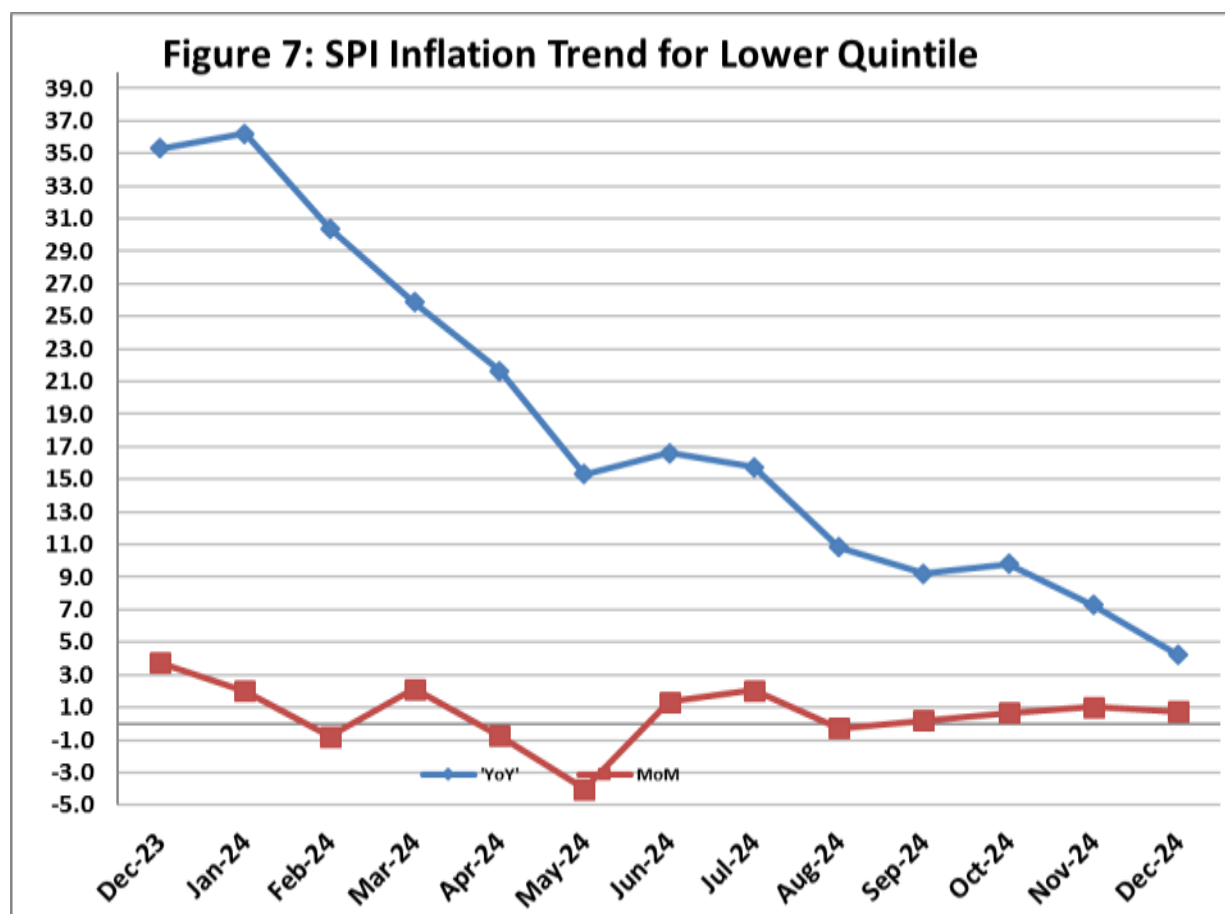
Decreased: Electricity Charges (9.44%), Motor Fuels (7.25%) and Transport Services (0.44%).

IV. Sensitive Price Indicator

Quintile-wise percentage changes YoY and MoM are given below in Table 4. The series from December 2023 to December 2024 is also graphed below in Figure 7.

Table 4: Sensitive Price Indicator (Base 2015-16)					
Quintiles	Indices			% Change Dec 2024 Over	
	Dec 2024	Nov 2024	Dec 2023	Nov 2024	Dec 2023
1	318.64	316.22	305.76	0.77	4.21
2	315.25	313.15	302.61	0.67	4.18
3	335.92	334.04	321.75	0.56	4.40
4	323.61	321.88	310.79	0.54	4.12
5	323.79	322.26	310.73	0.47	4.20
Combined	324.16	322.44	311.06	0.53	4.21

Table 4.1: Weekly Percentage Change of SPI During December 2024				
Quintiles	% Change over Previous week			
	05-12-2024	12-12-2024	19-12-2024	26-12-2024
Quintile 1	-0.44	0.03	0.68	0.69
Combined	-0.34	0.07	0.38	0.80



V. Wholesale Price Index

The Wholesale Price Index for **December, 2024** is decreased by **0.37%** over **November 2024**. It increased to **1.93%** over the corresponding month of the last year i.e. **December, 2023**. YoY and MoM movements, from December, 2023 to December, 2024 are also graphed below in Figure 8.

Table 5: Wholesale Price Index by Group of Commodities (Base 2015-16)

No	Group	Group Weight (%)	Indices			% Change Dec 2024 Over		Impact (In % points) Dec 2024 Over	
			Dec 24	Nov 24	Dec 23	Nov 24	Dec 23	Nov 24	Dec 23
	General	100.00	311.95	313.11	306.05	-0.37	1.93	-0.37	1.93
1	Agriculture Forestry & Fishery	25.77	281.12	283.65	269.72	-0.89	4.23	-0.21	0.96
2	Ores/Minerals, Elec., Gas & Water	12.01	361.62	366.60	372.58	-1.36	-2.94	-0.19	-0.43
3	Food, Beverages, Tobacco, Textiles & Leather Products	31.11	276.70	276.38	260.91	0.12	6.05	0.03	1.61
	i. Food Products, Beverages & Tobacco	20.07	292.37	291.32	276.07	0.36	5.90	0.07	1.07
	ii. Textiles & Apparels	10.33	253.21	253.26	236.63	-0.02	7.01	0.00	0.56
	iii. Leather Products	0.71	175.78	190.25	185.68	-7.61	-5.33	-0.03	-0.02
4	Other Transportable Goods	22.40	340.06	339.62	347.13	0.13	-2.04	0.03	-0.52
5	Metal Product, Machinery & Equipment	8.72	388.24	389.47	377.32	-0.32	2.89	-0.03	0.31

Main contributors to month-on-month and year-on-year percentage changes are given below and detail is given in **Annexure-C**.

1. **MONTH-ON-MONTH:** Top few commodities which varied from previous month are given below:

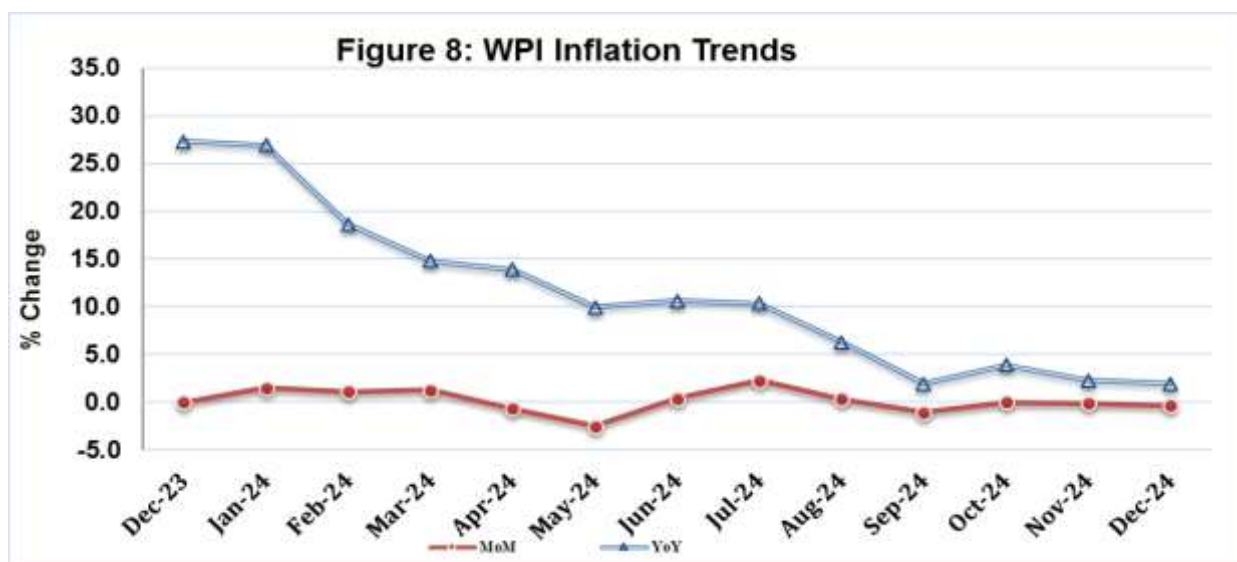
Increased: Edible Roots / Potatoes (31.94%), Pesticides (19.20%), Fresh Fruits (13.60%), Millet / Bajra (7.32%), Fuel Wood in Logs (6.99%), Medicines (5.69%), Glass Sheets (4.86%), Hides, Skins & Fur Skins, Raw (4.76%), Vegetables & Fruit Juice (4.32%), Raw Animal Materials / Wool (3.71%), Oil Cakes (3.11%), Fish Live Fresh or Chilled (2.99%) and Maize (2.82%).

Decreased: Stimulant & Spice Crops (36.94%), Poultry (14.18%), Other Leather (13.64%), Sugar Crops (9.35%), Leather Without Hair (8.35%), Other Cereal Flour (4.47%), Pulses (3.71%), Electrical Energy (3.70%), Eggs (3.16%), Fertilizers (2.88%), Fibre Crops (2.8%) and Timber(2.76%).

YEAR-ON-YEAR: Top few commodities which varied from previous year are given below:

Increased: Raw Animal Materials / Wool (85.62%), Other Cereal Flour (50.96%), Edible Roots / Potatoes (44.23%), Sugar Confectionary (31.28%), Maize (31.25%), Processed Liquid Milk (26.03%), Pesticides (25.95%), Hard Board (25%), Dyeing Material (23.72%), Dairy Products (23.63%), Electric Wires (22.98%), Other Fabrics (22.53%) and Fresh Fruits (21.4%).

Decreased: Wheat (35.78%), Wheat Flour (33.87%), Spices (18.88%), Kerosene Oil (15.87%), Other Leather (10.56%), Diesel Oil (10.23%), Chemicals (9.74%), Steel Bar & Sheets (8.77%), Motor Spirit (8.33%), Leather Without Hair (7.73%), Rice (6.63%), Electrical Energy (6.19%) and Eggs (6.15%).



Annexure A:CPI (Urban) Index Numbers by Commodity Groups & Commodities (2015-16=100)

Item and Specification	Weight	Index Numbers			% Change in Dec 2024 over			
		Dec 24	Nov 24	Dec 23	Nov 2024	Dec 2023		
General	100.0000	261.67	261.92	250.68	-	0.10	+	4.38
Food and non-alcoholic	30.4215	279.90	279.93	275.22	-	0.01	+	1.70
Beverage								
01 Wheat	0.6120	240.47	239.83	363.38	+	0.27	-	33.82
02 Wheat flour	3.0075	237.45	239.82	358.54	-	0.99	-	33.77
03 Wheat products	0.0936	291.44	292.49	324.07	-	0.36	-	10.07
04 Besan	0.0830	312.98	321.18	205.71	-	2.55	+	<u>52.15</u>
05 Rice	1.1804	309.73	312.05	324.72	-	0.74	-	4.62
06 Bakery and confectionary	0.4770	264.44	262.97	266.15	+	0.56	-	0.64
07 Nimco	0.1224	295.40	292.66	278.99	+	0.94	+	5.88
08 Meat	2.0411	326.19	323.58	268.73	+	0.81	+	21.38
09 Chicken	1.3631	234.10	269.26	238.56	-	13.06	-	1.87
10 Fish	0.3855	217.77	213.87	173.56	+	1.82	+	25.47
11 Milk fresh	7.1070	259.98	259.93	235.89	+	0.02	+	10.21
12 Milk products	0.6407	265.64	265.51	243.98	+	0.05	+	8.88
13 Milk powder	0.3106	303.02	302.94	251.17	+	0.03	+	20.64
14 Eggs	0.5083	394.02	390.09	403.90	+	1.01	-	2.45
15 Butter	0.0932	396.71	389.46	347.56	+	1.86	+	14.14
16 Mustard oil	0.0120	319.64	310.45	288.93	+	2.96	+	10.63
17 Cooking oil	1.1016	319.87	306.42	316.01	+	4.39	+	1.22
18 Vegetable ghee	1.0324	343.79	326.11	308.90	+	5.42	+	11.29
19 Dry fruits	0.3299	297.52	296.58	269.25	+	0.32	+	10.50
20 Fresh fruits	1.4363	206.21	189.46	184.95	+	8.84	+	11.49
21 Pulse masoor	0.1624	206.94	208.50	227.94	-	0.75	-	9.21
22 Pulse moong	0.1697	236.31	235.83	175.69	+	0.20	+	34.50
23 Pulse mash	0.1152	214.47	220.18	227.89	-	2.59	-	5.89
24 Pulse gram	0.1660	302.73	325.32	196.26	-	6.94	+	<u>54.25</u>
25 Gram whole	0.0912	314.63	319.38	253.41	-	1.49	+	24.16
26 Beans	0.0408	386.38	384.23	339.57	+	0.56	+	13.79
27 Potatoes	0.4496	493.04	438.57	359.80	+	12.42	+	37.03
28 Onions	0.5928	341.58	359.21	394.09	-	4.91	-	13.32
29 Tomatoes	0.3459	347.16	358.95	239.90	-	3.28	+	44.71
30 Fresh vegetables	1.5306	288.32	295.01	262.21	-	2.27	+	9.96
31 Sugar	1.1130	217.31	213.05	225.35	+	2.00	-	3.57
32 Gur	0.0379	241.32	242.53	229.48	-	0.50	+	5.16
33 Honey	0.1017	214.16	208.55	174.47	+	2.69	+	22.75
34 Sweetmeat	0.3535	317.01	316.56	287.40	+	0.14	+	10.30
35 Ice cream	0.1044	199.45	199.33	198.48	+	0.06	+	0.49
36 Condiments and Spices	1.3340	334.36	343.27	309.81	-	2.60	+	7.92
37 Dessert preparation	0.0419	270.14	270.14	263.38	+	0.00	+	2.57
38 Tea	0.8427	332.73	332.73	344.84	+	0.00	-	3.51
39 Beverages	0.8906	254.77	254.18	234.84	+	0.23	+	8.49
Alcoholic Beverages, Tobacco	0.8540	405.62	403.16	385.43	+	0.61	+	5.24
40 Cigarettes	0.7167	401.03	399.64	384.62	+	0.35	+	4.27
41 Pan prepared	0.1373	429.58	421.50	389.61	+	1.92	+	10.26
Clothing and footwear	8.0096	245.42	244.54	212.48	+	0.36	+	15.50
42 Cotton cloth	2.2227	280.39	280.13	245.08	+	0.09	+	14.41
43 Woolen cloth	0.8361	235.97	235.28	212.27	+	0.29	+	11.17
44 Readymade garments	1.3196	209.07	208.75	193.76	+	0.15	+	7.90
45 Woolen readymade garments	0.4307	256.69	246.66	215.42	+	4.07	+	19.16
46 Tailoring	1.0741	229.09	228.82	208.52	+	0.12	+	9.86
47 Hosiery	0.4070	233.67	232.65	203.89	+	0.44	+	14.61
48 Dopatta	0.1713	199.76	197.45	176.10	+	1.17	+	13.44
49 Cleaning and laundering	0.0665	263.39	263.18	249.82	+	0.08	+	5.43
50 Footwear	1.4816	246.93	246.91	187.26	+	0.01	+	31.86
Housing, water, Elec., Gas and Other Fuels	27.0332	244.15	246.49	236.27	-	0.95	+	3.34
51 House rent	19.2558	165.69	165.69	157.98	+	0.00	+	4.88
52 Construction input items	0.3765	265.94	266.10	259.53	-	0.06	+	2.47
53 Construction wage rates	0.2025	221.36	221.34	212.02	+	0.01	+	4.41
54 Water supply	0.5269	228.99	228.37	199.06	+	0.27	+	15.04
55 Garbage collection	0.1064	261.28	261.18	240.04	+	0.04	+	8.85
56 Electricity charges	4.5562	272.45	288.85	300.86	-	5.68	-	9.44
57 Gas charges	1.0807	1479.08	1479.08	1344.19	+	0.00	+	10.04

Annexure A:CPI (Urban) Index Numbers by Commodity Groups & Commodities (2015-16=100)

	Item and Specification	Weight	Index Numbers			% Change in Dec 2024 over	
			Dec 24	Nov 24	Dec 23	Nov 2024	Dec 2023
58	Liquified Hydrocarbons	0.5064	357.75	344.79	330.95	+ 3.76	+ 8.10
59	Solid Fuel	0.4218	225.71	215.01	197.20	+ 4.98	+ 14.46
	Furnishing and household equipment	4.0937	263.20	264.13	252.29	- 0.35	+ 4.32
60	Furniture and furnishing	0.4750	254.91	254.06	234.17	+ 0.33	+ 8.86
61	Carpets	0.0308	150.75	150.55	147.23	+ 0.13	+ 2.39
62	Household textiles	0.3420	207.66	198.51	180.40	+ 4.61	+ 15.11
63	Household equipments	1.0032	263.75	263.50	249.94	+ 0.09	+ 5.53
64	Plastic products	0.0536	217.79	216.13	202.12	+ 0.77	+ 7.75
65	Major tools & equipments	0.0084	237.52	233.96	220.42	+ 1.52	+ 7.76
66	Washing soap/detergents/match	1.4112	318.22	323.95	317.48	- 1.77	+ 0.23
67	Household servant	0.7695	199.33	198.83	186.99	+ 0.25	+ 6.60
	Health	2.3098	268.54	267.04	234.20	+ 0.56	+ 14.66
68	Drugs and medicines	1.0735	291.11	288.37	250.20	+ 0.95	+ 16.35
69	Therapeutic Appliances and Equipment	0.0054	154.64	153.39	147.02	+ 0.81	+ 5.18
70	Doctor (MBBS) clinic fee	0.4044	332.67	332.65	291.41	+ 0.01	+ 14.16
71	Dental services	0.0156	217.31	216.60	175.02	+ 0.33	+ 24.16
72	Medical tests	0.2367	201.50	200.55	184.16	+ 0.47	+ 9.42
73	Hospitals services	0.5742	211.27	210.81	187.04	+ 0.22	+ 12.95
	Transport	6.1368	300.02	296.81	305.96	+ 1.08	- 1.94
74	Motor vehicles	0.8097	259.37	259.37	254.55	+ 0.00	+ 1.89
75	Motor vehicle accessories	0.1941	263.75	261.00	250.39	+ 1.05	+ 5.34
76	Motor fuel	2.9088	345.61	341.34	370.07	+ 1.25	- 6.61
77	Mechanical services	0.4290	230.93	230.74	217.21	+ 0.08	+ 6.32
78	Motor vehicle tax	0.0482	399.23	399.23	148.53	+ 0.00	+ <u>168.79</u>
79	Transport services	1.7470	261.21	257.39	255.38	+ 1.48	+ 2.28
	Communication	2.3536	138.40	138.39	125.01	+ 0.01	+ 10.71
80	Postal services	0.0190	220.45	219.67	207.37	+ 0.36	+ 6.31
81	Communication apparatus	0.4524	188.41	188.41	190.09	+ 0.00	- 0.88
82	Communication Services	1.8822	125.55	125.55	108.53	+ 0.00	+ 15.68
	Recreation and culture	1.7301	260.51	260.05	245.92	+ 0.18	+ 5.93
83	Recreation and culture	0.6478	154.56	153.91	148.64	+ 0.42	+ 3.98
84	Text books	0.6655	332.81	332.81	314.48	+ 0.00	+ 5.83
85	Newspapers	0.0716	216.94	216.94	211.87	+ 0.00	+ 2.39
86	stationery	0.3452	329.01	327.89	303.40	+ 0.34	+ 8.44
	Education	4.8807	199.96	199.91	187.28	+ 0.03	+ 6.77
87	Education	4.8807	199.96	199.91	187.28	+ 0.03	+ 6.77
	Restaurants and hotels	7.4050	277.24	276.36	260.11	+ 0.32	+ 6.59
88	Readymade food	5.5235	285.08	283.99	267.78	+ 0.38	+ 6.46
89	Marriage Hall Charges	1.7514	260.50	260.26	243.02	+ 0.09	+ 7.19
90	Accommodation Services	0.1301	169.66	169.14	164.52	+ 0.31	+ 3.12
	Misc. goods and services	4.7720	292.40	291.88	265.25	+ 0.18	+ 10.24
91	Personal Grooming Services	0.8001	253.70	253.09	229.18	+ 0.24	+ 10.70
92	Electrical Appliances for Per	0.0465	177.15	177.00	161.44	+ 0.08	+ 9.73
93	Appliances/Articles/Products	2.9807	266.74	266.20	253.33	+ 0.20	+ 5.29
94	Personal Effects n.e.c.	0.9447	411.80	411.42	338.49	+ 0.09	+ 21.66

Annexure B:CPI (Rural) Index Numbers by Commodity Groups & Commodities (2015-16=100)

Item and Specification	Weight	Index Numbers			% Change in Dec 2024 over			
		Dec 24	Nov 24	Dec 23	Nov 2024		Dec 2023	
General	100.0000	271.60	270.81	262.11	+	0.29	+	3.62
Food and non-alcoholic Beverage	40.8668	285.04	284.92	288.66	+	0.04	-	1.25
01 Wheat	3.4736	242.36	241.07	367.85	+	0.54	-	34.11
02 Wheat Flour	3.4297	236.62	238.03	367.12	-	0.59	-	35.55
03 Wheat Products	0.1068	288.63	290.13	331.33	-	0.52	-	12.89
04 Besan	0.0728	328.88	331.96	218.29	-	0.93	+	<u>50.66</u>
05 Rice	1.5501	410.83	411.03	431.11	-	0.05	-	4.70
06 Bakery and Confectionary	0.3702	305.11	303.40	301.62	+	0.56	+	1.16
07 Nimco	0.0774	303.64	299.48	286.67	+	1.39	+	5.92
08 Meat	1.7146	338.96	337.85	279.00	+	0.33	+	21.49
09 Chicken	1.4641	245.85	281.11	252.12	-	12.54	-	2.49
10 Fish	0.2640	235.83	227.60	193.10	+	3.62	+	22.13
11 Milk fresh	10.3803	257.85	255.93	234.51	+	0.75	+	9.95
12 Milk products	0.9624	256.93	256.72	232.69	+	0.08	+	10.42
13 Milk powder	0.1062	275.91	275.94	217.92	-	0.01	+	26.61
14 Eggs	0.5665	388.48	371.49	387.26	+	4.57	+	0.32
15 Butter	0.3333	306.16	304.08	245.11	+	0.68	+	24.91
16 Mustard oil	0.0136	338.70	327.45	305.24	+	3.44	+	10.96
17 Cooking oil	0.6011	371.36	355.77	325.43	+	4.38	+	14.11
18 Vegetable ghee	2.3764	379.32	362.19	328.59	+	4.73	+	15.44
19 Dry fruits	0.2496	360.48	348.79	318.92	+	3.35	+	13.03
20 Fresh fruits	1.4505	207.00	201.10	199.06	+	2.93	+	3.99
21 Pulse Masoor	0.2076	230.41	234.75	239.45	-	1.85	-	3.78
22 Pulse Moong	0.2510	255.39	251.18	187.59	+	1.68	+	36.14
23 Pulse Mash	0.1465	233.18	239.97	234.11	-	2.83	-	0.40
24 Pulse Gram	0.2751	325.17	338.28	201.52	-	3.88	+	<u>61.36</u>
25 Gram Whole	0.1116	325.53	330.03	268.61	-	1.36	+	21.19
26 Beans	0.0896	408.24	407.36	353.35	+	0.22	+	15.53
27 Potatoes	0.7437	508.25	480.95	384.88	+	5.68	+	32.05
28 Onions	0.8965	334.68	345.16	352.65	-	3.04	-	5.10
29 Tomatoes	0.5069	297.04	322.27	238.88	-	7.83	+	24.35
30 Fresh Vegetables	2.0947	296.97	311.19	283.26	-	4.57	+	4.84
31 Sugar	2.0296	215.76	212.62	228.65	+	1.48	-	5.64
32 Gur	0.1522	239.19	238.68	226.93	+	0.21	+	5.40
33 Honey	0.0296	218.40	202.27	178.00	+	7.97	+	22.70
34 Sweetmeat	0.3967	285.20	283.17	268.32	+	0.72	+	6.29
35 Ice Cream	0.0568	199.34	199.34	197.95	+	0.00	+	0.70
36 Condiments and Spices	1.4919	299.10	306.52	276.61	-	2.42	+	8.13
37 Dessert Preparation	0.0133	268.52	268.52	269.02	+	0.00	-	0.19
38 Tea	1.2566	333.85	333.85	354.88	+	0.00	-	5.93
39 Beverages	0.5537	244.48	244.48	230.79	+	0.00	+	5.93
Alcoholic Beverages, Tobacco	1.2786	363.54	361.85	343.84	+	0.47	+	5.73
40 Cigarettes	1.2364	364.02	362.27	344.81	+	0.48	+	5.57
41 Pan Prepared	0.0422	349.58	349.58	315.48	+	0.00	+	10.81
Clothing and footwear	9.4826	263.86	261.64	233.32	+	0.85	+	13.09
42 Cotton Cloth	2.8381	291.70	291.34	247.39	+	0.12	+	17.91
43 Woolen Cloth	1.0959	256.06	254.57	230.10	+	0.59	+	11.28
44 Readymade Garments	1.1345	236.32	236.15	216.98	+	0.07	+	8.91
45 Woolen Readymade Garments	0.5401	298.80	284.62	255.50	+	4.98	+	16.95
46 Tailoring	1.2999	245.26	244.77	221.24	+	0.20	+	10.86
47 Hosiery	0.4322	340.20	339.38	310.47	+	0.24	+	9.58
48 Dopatta	0.2078	242.71	242.19	215.56	+	0.21	+	12.60
49 Cleaning and Laundering	0.0176	251.35	251.35	247.65	+	0.00	+	1.49
50 Footwear	1.9165	231.35	226.42	210.31	+	2.18	+	10.00
Housing, water, Elec., Gas and Other Fuels	18.4853	225.79	226.55	218.16	-	0.34	+	3.50
51 House Rent	8.6110	172.58	172.58	162.17	+	0.00	+	6.42
52 Construction Input Items	0.6306	254.85	252.71	229.63	+	0.85	+	10.98
53 Construction Wage Rates	0.2526	238.26	237.47	221.88	+	0.33	+	7.38
54 Water Supply	0.0645	311.91	311.91	292.34	+	0.00	+	6.69
55 Garbage Collection	0.0080	199.62	199.62	189.52	+	0.00	+	5.33
56 Electricity Charges	3.4431	272.45	288.85	300.86	-	5.68	-	9.44
57 Liquified Hydrocarbons	0.9994	319.27	315.56	306.16	+	1.18	+	4.28
58 Solid Fuel	4.4761	265.39	257.09	239.78	+	3.23	+	10.68

Annexure B:CPI (Rural) Index Numbers by Commodity Groups & Commodities (2015-16=100)

Item and Specification	Weight	Index Numbers			% Change in Dec 2024 over			
		Dec 24	Nov 24	Dec 23	Nov 2024	Dec 2023		
<i>Furnishing and household equipment</i>	4.1031	289.68	287.05	272.51	+	0.92	+	6.30
59 Furniture and Furnishing	0.5786	283.25	276.58	247.30	+	2.41	+	14.54
60 Household Textiles	0.4382	239.72	233.81	215.46	+	2.53	+	11.26
61 Household Equipments	1.2774	285.36	283.96	264.80	+	0.49	+	7.76
62 Plastic Products	0.0776	291.12	281.80	255.93	+	3.31	+	13.75
63 Major Tools and Equipments	0.0324	236.51	233.36	217.49	+	1.35	+	8.75
64 Washing Soaps, Detergents and	1.6989	308.94	307.92	303.42	+	0.33	+	1.82
<i>Health</i>	3.5141	261.49	258.24	233.67	+	1.26	+	11.91
65 Drugs and Medicines	1.5792	313.71	307.09	266.81	+	2.16	+	17.58
66 Doctor Clinic Fee	0.5128	288.55	288.55	279.73	+	0.00	+	3.15
67 Dental Services	0.0181	219.90	219.90	188.38	+	0.00	+	16.73
68 Medical Tests	0.3967	219.85	219.85	210.51	+	0.00	+	4.44
69 Hospitals Services	1.0073	182.98	182.02	168.19	+	0.53	+	8.79
<i>Transport</i>	5.5580	313.24	310.10	324.36	+	1.01	-	3.43
70 Motor Vehicles	0.7305	193.13	193.13	192.75	+	0.00	+	0.20
71 Motor Vehicles Accessories	0.1572	269.12	268.80	257.92	+	0.12	+	4.34
72 Motor Fuels	2.4932	346.28	341.68	373.36	+	1.35	-	7.25
73 Mechanical Services	0.3645	229.81	229.81	221.45	+	0.00	+	3.78
74 Motor Vehicle Tax	0.0174	342.03	342.03	150.93	+	0.00	+	126.61
75 Transport Services	1.7952	336.74	333.45	338.24	+	0.99	-	0.44
<i>Communication</i>	1.9940	128.64	128.64	111.63	+	0.00	+	15.24
76 Postal Services	0.0070	179.32	179.32	179.32	+	0.00	+	0.00
77 Communication Apparatus	0.3362	161.39	161.39	154.64	+	0.00	+	4.36
78 Communication Services	1.6508	121.76	121.76	102.58	+	0.00	+	18.70
<i>Recreation and culture</i>	1.3764	307.45	305.61	275.74	+	0.60	+	11.50
79 Recreation and Culture	0.4763	247.20	242.38	217.03	+	1.99	+	13.90
80 Text Books	0.5047	360.47	360.47	327.72	+	0.00	+	9.99
81 Newspapers	0.0230	242.52	242.52	242.52	+	0.00	+	0.00
82 Stationery	0.3724	316.65	316.03	282.44	+	0.20	+	12.11
<i>Education</i>	2.1342	223.51	223.51	181.78	+	0.00	+	22.96
83 Education	2.1342	223.51	223.51	181.78	+	0.00	+	22.96
<i>Restaurants and hotels</i>	6.1895	287.08	285.88	260.26	+	0.42	+	10.31
84 Readymade Food	3.8001	312.79	310.83	288.68	+	0.63	+	8.35
85 Marriage Hall Charges	2.2525	254.26	254.26	221.33	+	0.00	+	14.88
86 Accommodation Services	0.1369	113.40	113.40	112.13	+	0.00	+	1.13
<i>Misc. goods and services</i>	5.0174	316.64	313.56	276.26	+	0.98	+	14.62
87 Personal Grooming Services	1.5363	303.83	303.16	278.37	+	0.22	+	9.15
88 Appliances/Articles/Products	2.2746	258.84	256.28	237.06	+	1.00	+	9.19
89 Personal Effects n.e.c.	1.2065	441.92	434.79	347.46	+	1.64	+	27.19

Annexure C: Wholesale Price Indices by Major Groups & Commodities (2015-16=100)

Item and Specification	Weight	Index Numbers			% Change in Dec 2024 over		
		Dec 24	Nov 24	Dec 23	Nov 2024	Dec 2023	
General	100.0000	311.95	313.11	306.05	-	0.37	+ 1.93
Agriculture Forestry & Fishery	25.7674	281.12	283.65	269.72	-	0.89	+ 4.23
001 Wheat	0.6297	235.66	236.70	366.95	-	0.44	- 35.78
002 Maize	0.6764	282.26	274.53	215.06	+	2.82	+ 31.25
003 Rice	2.4413	329.07	335.71	352.45	-	1.98	- 6.63
004 Sorghum / Jowar	0.0214	286.93	288.82	280.63	-	0.65	+ 2.24
005 Millet / Bajra	0.0374	273.62	254.96	233.38	+	7.32	+ 17.24
006 Vegetables	1.2441	351.42	350.98	372.23	+	0.13	- 5.59
007 Fresh Fruits	1.5144	229.66	202.16	189.18	+	13.60	+ 21.40
008 Dry Fruits	0.2478	355.71	349.18	323.00	+	1.87	+ 10.13
009 Cotton Seeds	1.1511	201.42	205.54	172.33	-	2.00	+ 16.88
010 Other Oil Seeds	0.0722	292.20	293.71	283.94	-	0.51	+ 2.91
011 Edible Roots / Potatoes	0.2540	674.25	511.02	467.49	+	31.94	+ 44.23
012 Stimulant & Spice Crops	0.1634	357.29	566.58	337.29	-	36.94	+ 5.93
013 Pulses	0.4901	294.34	305.68	260.29	-	3.71	+ 13.08
014 Sugar Crops	1.0725	277.13	305.73	250.51	-	9.35	+ 10.63
015 Fibre Crops	5.3169	329.68	339.17	322.58	-	2.80	+ 2.20
016 Unmanufactured Tobacco	0.0742	570.07	566.21	522.12	+	0.68	+ 9.18
017 Poultry	0.5633	224.16	261.19	230.99	-	14.18	- 2.96
018 Raw Milk from Bovine Animals	7.0279	246.78	246.78	226.55	+	0.00	+ 8.93
019 Eggs	0.5034	389.80	402.53	415.34	-	3.16	- 6.15
020 Raw Animal Materials / Wool	0.0351	251.59	242.58	135.54	+	3.71	+ 85.62
021 Hides, Skins & Fur Skins, Raw	0.4834	57.17	54.57	50.66	+	4.76	+ 12.85
022 Fuel Wood in Logs	0.0179	210.99	197.21	183.72	+	6.99	+ 14.84
023 Fish Live Fresh or Chilled	1.7295	228.56	221.93	209.26	+	2.99	+ 9.22
Ores/Minerals, Elec., Gas & Water	12.0069	361.62	366.60	372.58	-	1.36	- 2.94
024 Coal not Agglomerated	0.7508	227.51	227.51	194.29	+	0.00	+ 17.10
025 Natural Gas Liquified	5.7065	420.77	419.49	428.59	+	0.31	- 1.82
026 Salt & Pure Sodium Chloride	0.0584	407.15	407.14	350.23	+	0.00	+ 16.25
027 Electrical Energy	5.4912	318.00	330.22	339.00	-	3.70	- 6.19
Food, Beverages, Tobacco, Textil	31.1122	276.70	276.38	260.91	+	0.12	+ 6.05
Food Products, Beverages & Tobacco	20.0718	292.37	291.32	276.07	+	0.36	+ 5.90
028 Meat of Animals	3.4559	317.69	317.03	268.89	+	0.21	+ 18.15
029 Vegetables & Fruit Juice	0.0058	250.48	240.11	237.76	+	4.32	+ 5.35
030 Dried Fruits & Nuts	0.1733	390.20	389.75	367.39	+	0.12	+ 6.21
031 Fruit Juices	0.3880	270.91	270.64	250.41	+	0.10	+ 8.19
032 Vegetable Oils Refined	1.9242	287.74	286.39	274.86	+	0.47	+ 4.69
033 Vegetable Ghee	1.5632	365.49	356.36	316.88	+	2.56	+ 15.34
034 Oil Cakes	0.9611	269.66	261.53	261.35	+	3.11	+ 3.18
035 Processed Liquid Milk	4.4437	320.15	320.28	254.03	-	0.04	+ 26.03
036 Milk & Cream in Solid Form	0.0316	289.09	296.19	259.33	-	2.40	+ 11.48
037 Ice Cream	0.0047	200.56	200.56	198.75	+	0.00	+ 0.91
038 Dairy Products N.E.C	0.0117	325.53	325.65	263.32	-	0.04	+ 23.63
039 Wheat Flour	2.3034	237.93	241.94	359.78	-	1.66	- 33.87
040 Other Cereal Flour	0.0604	331.50	347.00	219.59	-	4.47	+ 50.96
041 Sugar Refined	1.7975	218.62	214.65	230.49	+	1.85	- 5.15
042 Chocolate	0.0139	143.40	144.02	122.85	-	0.43	+ 16.73
043 Sugar Confectionary	0.0738	310.37	307.13	236.41	+	1.05	+ 31.28
044 Coffee & Tea	0.7303	280.87	281.18	265.36	-	0.11	+ 5.84
045 Spices	0.1449	300.82	300.81	370.84	+	0.00	- 18.88
046 Other Food Products	0.0336	235.77	235.77	230.54	+	0.00	+ 2.27
047 Mineral Water	0.0207	206.22	206.09	209.13	+	0.06	- 1.39
048 Beverages	0.6303	260.40	264.17	255.18	-	1.43	+ 2.05
049 Tobacco Products	1.2998	280.52	280.52	259.58	+	0.00	+ 8.07
Textiles & Apparels	10.3289	253.21	253.26	236.63	-	0.02	+ 7.01
050 Cotton Yarn	5.2491	239.61	239.61	239.61	+	0.00	+ 0.00
051 Nylon Yarn	0.1719	95.24	95.24	95.24	+	0.00	+ 0.00
052 Blended Yarn	0.1689	148.12	148.12	148.12	+	0.00	+ 0.00
053 Woven Fabrics	0.0128	255.78	255.78	237.72	+	0.00	+ 7.60
054 Cotton Fabrics	0.6343	338.00	336.14	282.53	+	0.55	+ 19.63
055 Other Fabrics	1.1016	259.18	259.14	211.53	+	0.02	+ 22.53
056 Silk & Reyon Fabrics	0.7350	397.67	397.84	349.21	-	0.04	+ 13.88
057 Towels	0.1235	202.83	202.83	193.57	+	0.00	+ 4.78

Annexure C: Wholesale Price Indices by Major Groups & Commodities (2015-16=100)

Item and Specification	Weight	Index Numbers			% Change in Dec 2024 over	
		Dec 24	Nov 24	Dec 23	Nov 2024	Dec 2023
058 Blankets	0.0029	158.72	154.71	145.65	+ 2.59	+ 8.97
059 Bed Sheets	0.0913	203.39	203.64	167.97	- 0.12	+ 21.09
060 Quilts	0.0019	243.00	243.00	222.51	+ 0.00	+ 9.21
061 Woolen Carpets	0.0383	177.15	177.15	173.86	+ 0.00	+ 1.89
062 Synthetic Carpets	0.0566	156.16	156.16	150.83	+ 0.00	+ 3.53
063 Hosiery Products	0.8832	204.65	205.58	190.68	- 0.45	+ 7.33
064 Readymade Garments	1.0576	264.59	265.35	235.81	- 0.29	+ 12.20
Leather Products	0.7115	175.78	190.25	185.68	- 7.61	- 5.33
065 Leather Without Hair	0.2973	167.33	182.58	181.35	- 8.35	- 7.73
066 Other Leather N.E.C	0.2567	142.17	164.62	158.95	- 13.64	- 10.56
067 Footwears	0.1575	246.48	246.48	237.41	+ 0.00	+ 3.82
Other Transportable Goods	22.3979	340.06	339.62	347.13	+ 0.13	- 2.04
068 Timber	0.0165	236.67	243.38	224.45	- 2.76	+ 5.44
069 Printing Paper	0.4279	258.64	262.88	244.33	- 1.61	+ 5.86
070 Hard Board	0.1579	261.62	261.62	209.29	+ 0.00	+ 25.00
071 Motor Spirit	1.6268	357.06	351.63	389.51	+ 1.54	- 8.33
072 Diesel Oil	5.4849	323.77	320.58	360.65	+ 1.00	- 10.23
073 Kerosene Oil	0.2151	323.55	320.79	384.57	+ 0.86	- 15.87
074 Furnace Oil	3.2664	550.39	556.43	583.65	- 1.09	- 5.70
075 Mobil Oil	0.7114	251.76	251.76	236.05	+ 0.00	+ 6.66
076 Chemicals	1.7720	264.76	268.59	293.32	- 1.43	- 9.74
077 Dyeing Material	0.1539	272.52	272.52	220.27	+ 0.00	+ 23.72
078 Fertilizers	2.8657	271.22	279.27	259.54	- 2.88	+ 4.50
079 Pesticides	0.2763	234.35	196.60	186.07	+ 19.20	+ 25.95
080 Insecticides	0.1276	174.37	174.37	151.05	+ 0.00	+ 15.44
081 Paints & Varnishes	0.1916	278.01	276.93	269.25	+ 0.39	+ 3.25
082 Medicines	1.1428	370.51	350.57	306.90	+ 5.69	+ 20.73
083 Soaps & Detergents	0.8168	238.02	234.11	226.45	+ 1.67	+ 5.11
084 Auto Tyres	0.2703	261.90	261.69	246.71	+ 0.08	+ 6.16
085 Plastic Products	0.4550	204.95	206.87	192.69	- 0.93	+ 6.36
086 Glass sheets	0.2089	377.72	360.22	355.31	+ 4.86	+ 6.31
087 Other Glass Articles	0.1635	215.81	215.81	208.80	+ 0.00	+ 3.36
088 Ceramics & Sanitary Fixture	0.0244	224.17	225.53	196.31	- 0.60	+ 14.19
089 Bricks, Blocks & Tiles	0.1566	206.65	203.89	194.26	+ 1.35	+ 6.38
090 Cement	1.8145	290.29	293.30	244.89	- 1.03	+ 18.54
091 Bed Foam	0.0006	335.53	331.21	331.49	+ 1.30	+ 1.22
092 Matches	0.0505	3329.35	3329.35	3306.56	+ 0.00	+ 0.69
Metal Product, Machinery & Equipment	8.7156	388.24	389.47	377.32	- 0.32	+ 2.89
093 Steel Bar & Sheets	1.4615	322.03	326.28	352.99	- 1.30	- 8.77
094 Pipe Fittings	0.0780	505.32	498.57	428.38	+ 1.35	+ 17.96
095 Steel Products	0.3879	275.75	275.75	244.45	+ 0.00	+ 12.80
096 Engines & Motors	0.0046	186.89	186.89	186.89	+ 0.00	+ 0.00
097 Vacuum Pumps	0.0155	107.56	107.56	107.56	+ 0.00	+ 0.00
098 Air Conditioners	0.0049	309.58	309.58	313.62	+ 0.00	- 1.29
099 Cultivators	0.0551	351.39	351.39	361.67	+ 0.00	- 2.84
100 Chuff Cutter	0.1293	504.72	504.72	504.72	+ 0.00	+ 0.00
101 Tractors	0.0028	320.14	320.14	297.43	+ 0.00	+ 7.64
102 Lathe Machines	0.0525	488.10	488.10	467.20	+ 0.00	+ 4.47
103 Concrete Mixture	0.0107	426.37	426.37	369.25	+ 0.00	+ 15.47
104 Fridge,WashM,SewM,Fans,Iron	1.1645	304.01	301.65	279.25	+ 0.78	+ 8.87
105 Electric Wires	0.0912	338.91	335.93	275.58	+ 0.89	+ 22.98
106 Lighting Equipments	1.4431	757.41	757.41	714.75	+ 0.00	+ 5.97
107 Radio & Television	0.1843	190.53	190.53	196.21	+ 0.00	- 2.89
108 Motor Vehicles	0.0244	256.95	256.95	254.58	+ 0.00	+ 0.93
109 Motorcycles	0.2570	263.76	263.76	263.76	+ 0.00	+ 0.00
110 Bicycles	3.3483	316.55	318.93	308.80	- 0.75	+ 2.51
