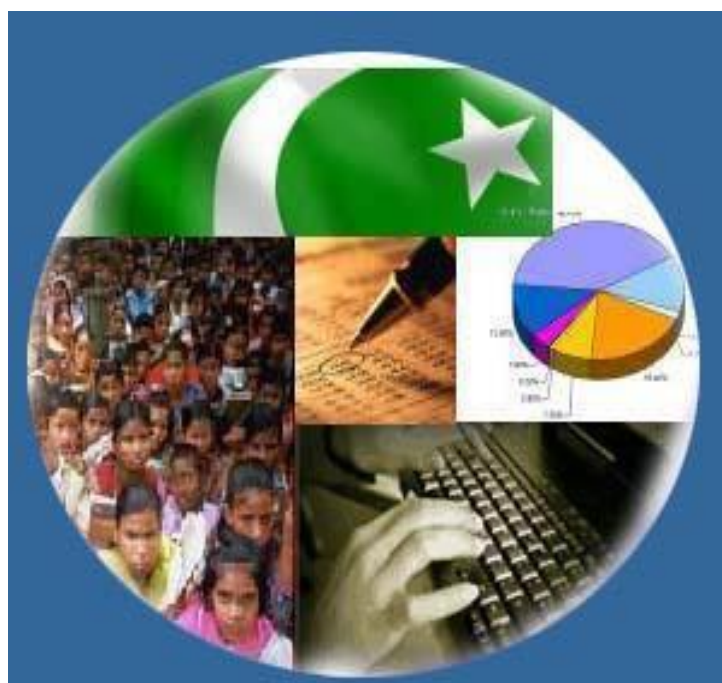




Monthly Review on Price Indices



March, 2023
(Base Year 2015-16)

Government of Pakistan
Ministry of Planning, Development & Special Initiatives
Pakistan Bureau of Statistics
Islamabad

PRICE STATISTICS TEAM

S#	Name	Designation
1.	Dr. Naeem Uz Zafar	Chief Statistician
2.	Syed Ejaz Wasti	Member (National Accounts/Prices)
3.	Dr. Bahrawar Jan	Deputy Director General
4.	Mr. Naseer Ahmad	Director
5.	Dr. Ahtasham Gul	Chief Statistical Officer
6.	Mr. Tauseef ul Hai Khan	Assistant Census Commissioner
7.	Mr. Adnan Shams	Statistical Officer
8.	Mr. Muhammad Mazhar	Statistical Officer
9.	Mr. Shahzad	Statistical Officer
10.	Mr. Umer Farooq	Statistical Assistant
11.	Mr. Ansar Mahmood	Statistical Assistant
12.	Mrs. Madiha Gulfraz	Statistical Assistant
13.	Mrs. Humail Fatima	Statistical Assistant

IT & SOFTWARE TEAM

1.	Mrs. Sobia Munawar	Director (DP)
2.	Mr. Muhammad Ehtesham	Director (DP)
3.	Mr. Arsalan Bashir	Data Processing Officer
4.	Mr. Muhammad Kibria	Data Processing Officer
5.	Mr. Muhammad Irfan Bajwa	Data Processing Assistant

Inflation in Brief

- CPI inflation General**, increased to 35.4% on year-on-year basis in Mar 2023 as compared to an increase of 31.5% in the previous month and 12.7% in Mar 2022. On month-on-month basis, it increased to 3.7% in Mar 2023 as compared to an increase of 4.3% in the previous month and an increase of 0.8% in Mar 2022.
- CPI inflation Urban**, increased to 33.0% on year-on-year basis in Mar 2023 as compared to an increase of 28.8% in the previous month and 11.9% in Mar 2022. On month-on-month basis, it increased to 3.9% in Mar 2023 as compared to an increase of 4.5% in the previous month and an increase of 0.7% in Mar 2022.
- CPI inflation Rural**, increased to 38.9% on year-on-year basis in Mar 2023 as compared to an increase of 35.6% in the previous month and 13.9% in Mar 2022. On month-on-month basis, it increased to 3.5% in Mar 2023 as compared to an increase of 4.0% in the previous month and an increase of 1.0% in Mar 2022.
- SPI inflation** on YoY increased to 40.4% in Mar 2023 as compared to an increase of 33.6% a month earlier and 13.0% in Mar 2022. On MoM basis, it increased by 5.8% in Mar 2023 as compared to an increase of 3.7% a month earlier and an increase of 0.6% in Mar 2022.
- WPI inflation** on YoY basis increased to 37.5% in Feb 2023 as compared to an increase of 36.4% a month earlier and an increase of 23.8% in Mar 2022. On MoM basis, it increased by 4.7% in Mar 2023 as compared to an increase of 8.2% a month earlier and an increase of 3.9% in corresponding month of last year i.e. Mar 2022.
- Figures 1 and 2 show graphically the yearly data of Table 1.a for Urban and Rural CPI while Table 1.1 shows "Period Average" and "YoY" percent changes in indices of three years.

Table 1.a General Inflation (%) (Base 2015-16)																		
PERIOD	CPI														SPI**		WPI	
	General						Food				Non-Food							
	National		Urban		Rural		Urban		Rural		Urban		Rural		YoY	MoM	YoY	MoM
	YoY	MoM	YoY	MoM	YoY	MoM	YoY	MoM	YoY	MoM	YoY	MoM	YoY	MoM				
Jun-21	9.7	-0.3	9.6	-0.4	9.7	-0.1	11.0	-1.9	9.8	-0.8	8.8	0.5	9.7	0.6	17.6	-0.4	20.9	0.9
Jul-21	8.4	1.3	8.7	1.3	8.0	1.4	9.4	1.5	7.3	1.6	8.2	1.1	8.7	1.2	16.2	1.8	17.3	2.3
Aug-21	8.4	0.6	8.3	0.5	8.4	0.7	10.2	0.5	9.1	0.8	7.2	0.5	7.7	0.6	15.9	0.7	17.1	1.2
Sep-21	9.0	2.1	9.1	2.0	8.8	2.3	10.8	3.6	9.1	3.7	8.1	1.1	8.5	1.0	16.6	2.7	19.6	3.2
Oct-21	9.2	1.9	9.6	1.7	8.7	2.2	9.4	1.5	7.2	2.6	9.7	1.8	10.0	1.9	15.2	2.1	21.2	4.2
Nov-21	11.5	3.0	12.0	2.9	10.9	3.1	11.9	3.9	8.6	3.3	12.0	2.2	13.0	3.0	18.1	3.6	27.0	3.8
Dec-21	12.3	0.0	12.7	0.3	11.6	-0.5	11.7	-2.3	9.0	-3.1	13.4	2.0	14.0	1.9	20.9	-0.4	26.2	-0.2
Jan-22	13.0	0.4	13.0	0.1	12.9	0.9	13.3	-0.8	11.8	0.4	12.8	0.6	13.9	1.4	20.9	-0.8	24.0	0.6
Feb-22	12.2	1.2	11.5	0.9	13.3	1.5	14.3	2.2	14.6	2.6	9.9	0.2	12.2	0.4	18.7	1.3	23.6	1.9
Mar-22	12.7	0.8	11.9	0.7	13.9	1.0	14.5	1.8	15.5	2.3	10.4	-0.1	12.5	-0.2	13.0	0.6	23.8	3.9
Apr-22	13.4	1.6	12.2	1.6	15.1	1.6	15.6	3.7	17.7	2.8	10.2	0.3	12.8	0.5	14.2	1.5	28.1	3.2
May-22	13.8	0.4	12.4	0.3	15.9	0.6	15.5	1.0	19.0	1.3	10.4	-0.1	13.1	0.0	14.1	0.6	29.6	1.4
Jun-22	21.3	6.3	19.8	6.2	23.6	6.6	24.0	5.3	27.0	6.0	17.3	6.8	20.4	7.1	21.7	6.2	38.9	8.2
Jul-22	24.9	4.3	23.6	4.5	26.9	4.2	27.4	4.3	29.6	3.7	21.3	4.6	24.5	4.6	28.2	7.3	38.5	2.0
Aug-22	27.3	2.4	26.2	2.6	28.8	2.2	28.8	1.6	30.2	1.2	24.7	3.3	27.5	3.1	34.0	5.2	41.2	3.1
Sep-22	23.2	-1.2	21.2	-2.1	26.1	0.2	30.8	5.2	32.7	5.7	15.2	-6.6	20.1	-4.9	28.6	-1.4	38.9	1.4
Oct-22	26.6	4.7	24.6	4.5	29.5	5.0	34.7	4.5	37.2	6.1	18.2	4.5	22.4	3.9	24.0	-1.5	32.6	-0.5
Nov-22	23.8	0.8	21.6	0.4	27.2	1.3	29.7	0.0	33.5	0.5	16.4	0.6	21.4	2.1	27.1	6.1	27.7	0.0
Dec-22	24.5	0.5	21.6	0.3	28.8	0.7	32.7	0.0	37.9	0.1	14.8	0.6	20.7	1.4	27.8	0.2	27.1	-0.7
Jan-23	27.6	2.9	24.4	2.4	32.3	3.6	39.0	3.9	45.2	5.7	15.6	1.2	20.9	1.5	30.5	1.3	28.5	1.8
Feb-23	31.5	4.3	28.8	4.5	35.6	4.0	41.9	4.3	47.0	3.9	20.8	4.7	25.3	4.1	33.6	3.7	36.4	8.2
Mar-23	35.4	3.7	33.0	3.9	38.9	3.5	47.1	5.6	50.2	4.5	24.1	2.7	28.5	2.4	40.4	5.8	37.5	4.7

** SPI for quintile 1. Digits 0.0* are due to rounding off.

Core inflation (NFNE)

7. Measured by **non-food non-energy Urban** increased to 18.6% on (YoY) basis in Mar 2023 as compared to an increase of 17.1% in the previous month and 8.9% in Mar 2022. On (MoM) basis, it increased by 2.5% in Mar 2023 as compared to an increase of 2.2% in previous month, and an increase of 1.2% in corresponding month of last year i.e. Mar, 2022.
8. Measured by **non-food non-energy Rural** increased to 23.1% on (YoY) basis in Mar 2023 as compared to an increase of 21.5% in the previous month and 10.3% in Mar 2022. On (MoM) basis, it increased by 2.4% in Mar 2023 as compared to an increase of 2.6% in previous month, and an increase of 1.1% in corresponding month of last year i.e. Mar 2022.

Core inflation (Trimmed)

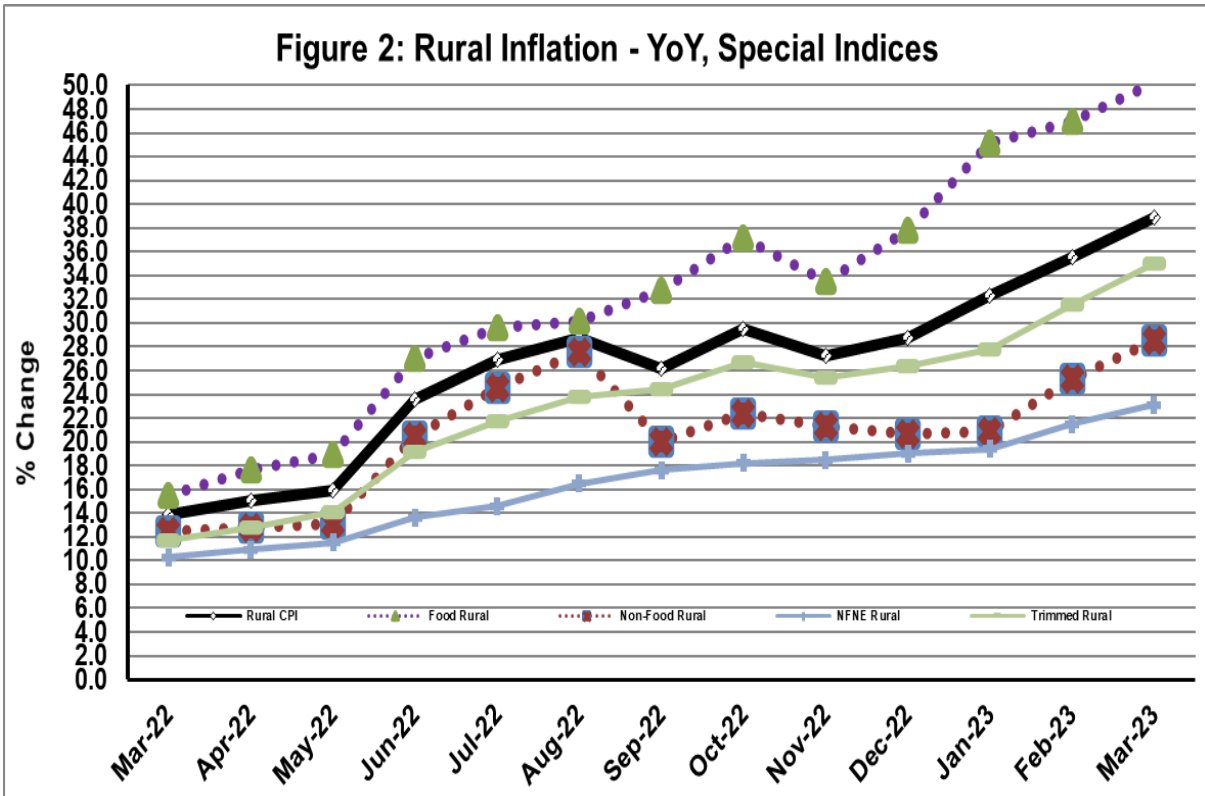
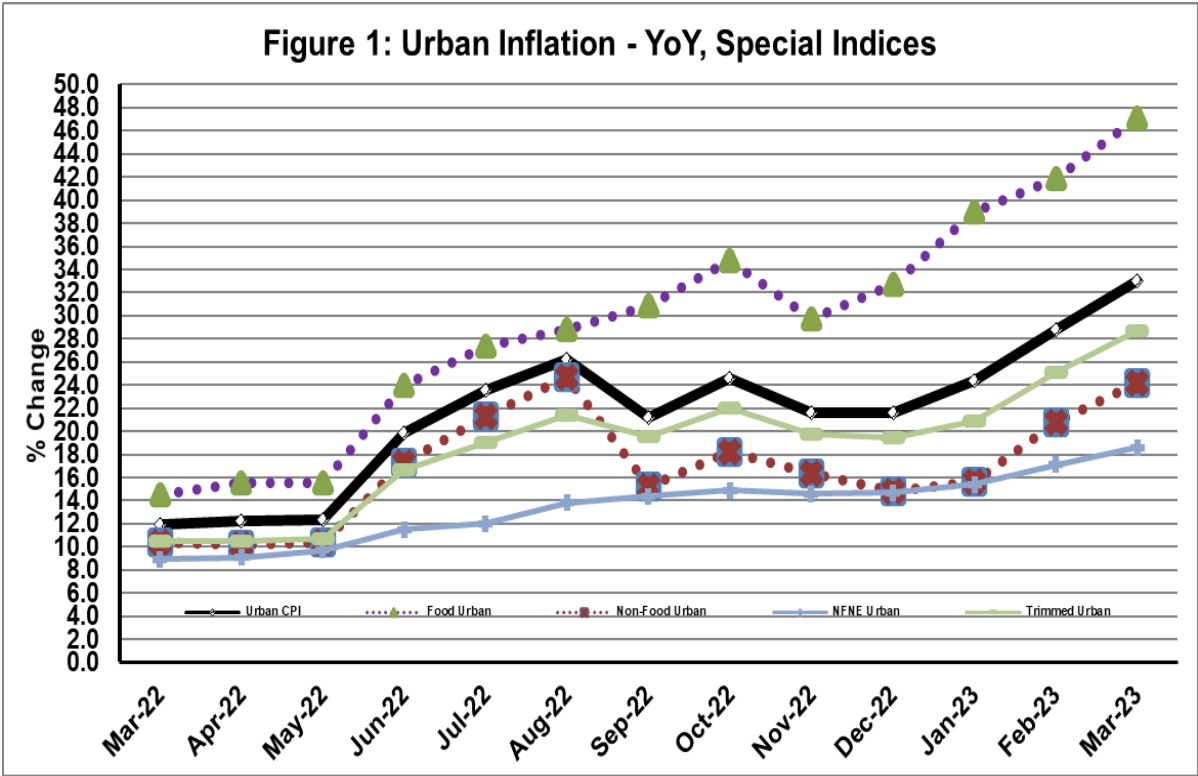
9. Measured by 20% **weighted trimmed mean Urban** increased to 28.7% on (YoY) basis in Mar 2023 as compared to 25.1% in the previous month and 10.5% in Mar 2022. On (MoM) basis, it increased by 2.7% in Mar 2023 as compared to an increase of 2.9% in the previous month and an increase of 0.8% in corresponding month of last year i.e. Mar 2022.
10. Measured by 20% **weighted trimmed mean Rural** increased to 35.0% on (YoY) basis in Mar 2023 as compared to 31.6% in the previous month and 11.7% in Mar 2022. On (MoM) basis, it increased to 2.9% in Mar 2023 as compared to an increase of 3.9% in the previous month and an increase of 0.8% in corresponding month of last year i.e. Mar 2022.

Table 1.b Core Inflation (%) (Base 2015-16)

Period	NFNE				Trimmed			
	Urban		Rural		Urban		Rural	
	YoY	MoM	YoY	MoM	YoY	MoM	YoY	MoM
Mar-22	8.9	1.2	10.3	1.1	10.5	0.8	11.7	0.8
Apr-22	9.1	1.1	10.9	1.2	10.5	0.9	12.8	0.9
May-22	9.7	0.7	11.5	0.9	10.7	0.8	14.1	1.4
Jun-22	11.5	2.0	13.6	2.3	16.7	3.5	19.1	4.3
Jul-22	12.0	1.2	14.6	1.6	19.1	2.7	21.7	2.7
Aug-22	13.8	1.8	16.5	1.8	21.4	1.7	23.8	1.8
Sep-22	14.4	0.9	17.6	1.4	19.5	1.6	24.4	2.5
Oct-22	14.9	1.3	18.2	1.5	22.0	1.9	26.7	2.7
Nov-22	14.6	0.8	18.5	2.1	19.8	0.5	25.4	1.8
Dec-22	14.7	1.2	19.0	1.5	19.4	0.8	26.4	1.5
Jan-23	15.4	1.4	19.4	1.5	20.9	1.5	27.8	2.1
Feb-23	17.1	2.2	21.5	2.6	25.1	2.9	31.6	3.9
Mar-23	18.6	2.5	23.1	2.4	28.7	2.7	35.0	2.9

Table 1.1 Period Average and Y-o-Y % Change

INDEX	Average July - March % changes			March over March % changes		
	2022-2023	2021-2022	2020-2021	2022-2023	2021-2022	2020-2021
CPI (National)	27.26	10.77	8.34	35.37	12.72	9.05
CPI (Urban)	25.04	10.78	7.36	32.97	11.94	8.75
CPI (Rural)	30.56	10.75	9.83	38.88	13.88	9.51
SPI	30.50	17.26	11.91	40.44	13.02	18.70
WPI	34.15	22.27	6.35	37.52	23.78	14.59



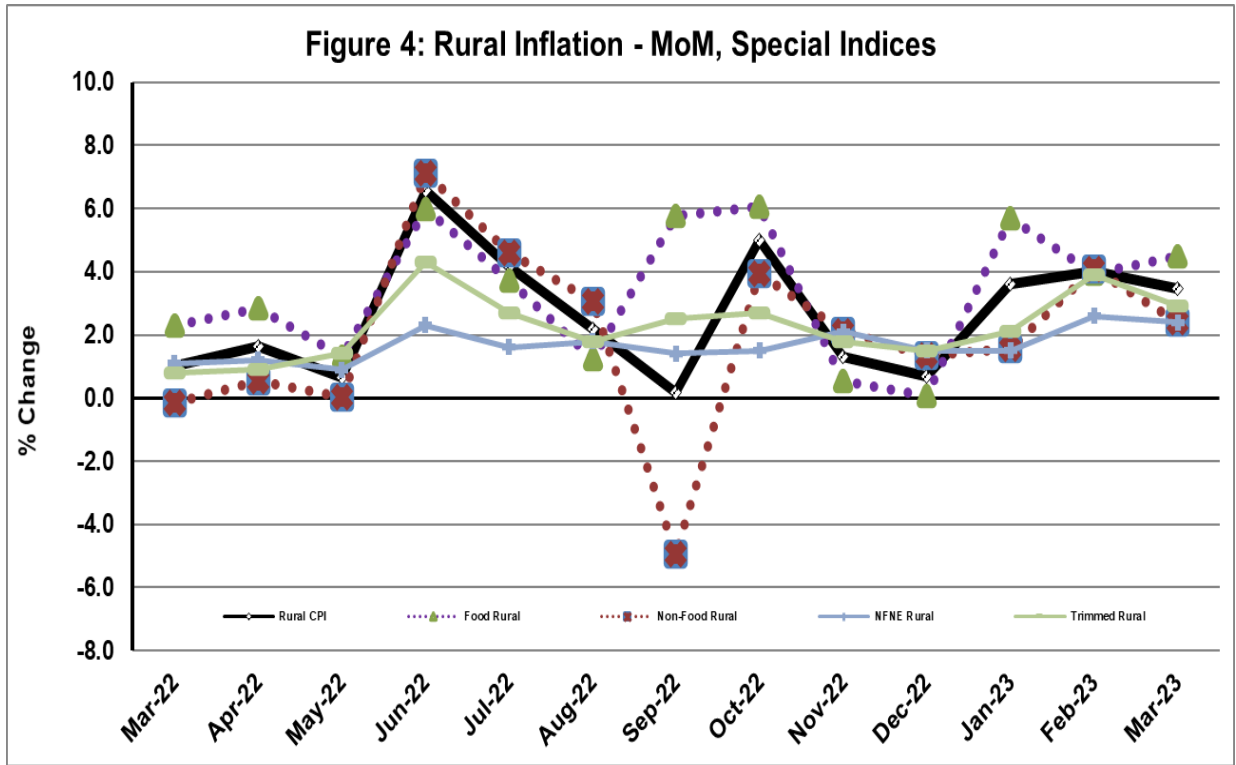
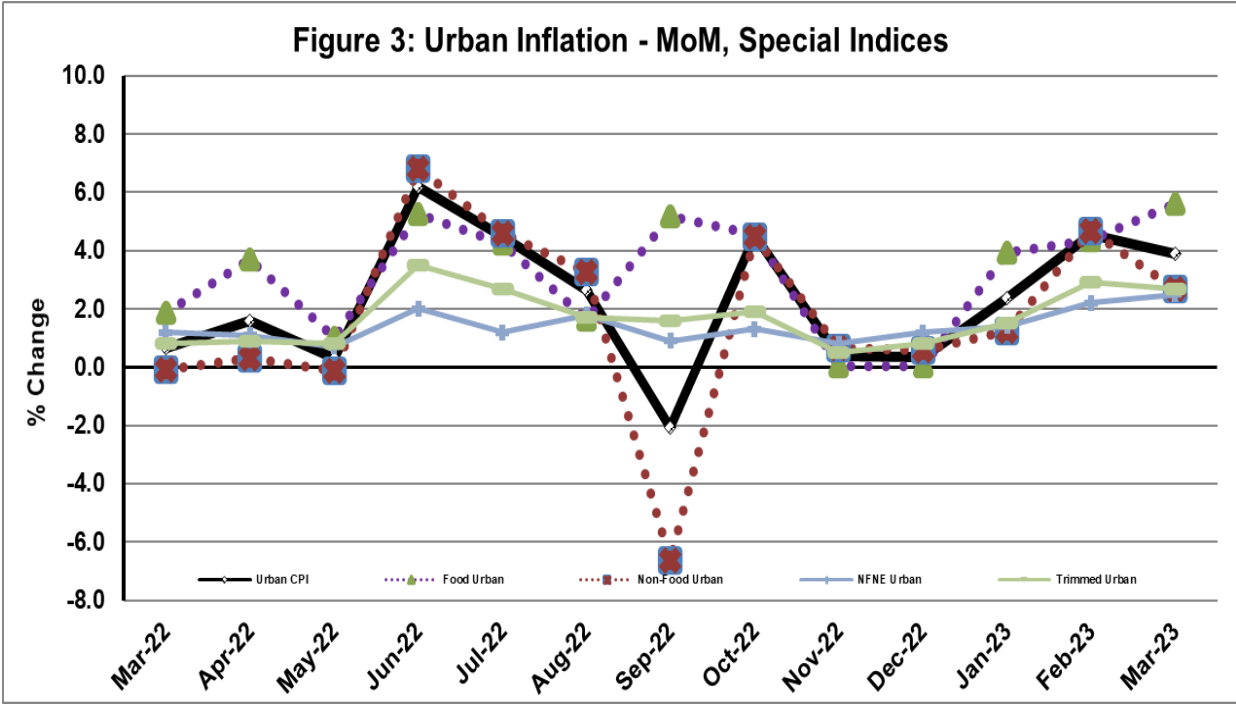


Figure 5: CPI YoY (National, Urban, Rural)

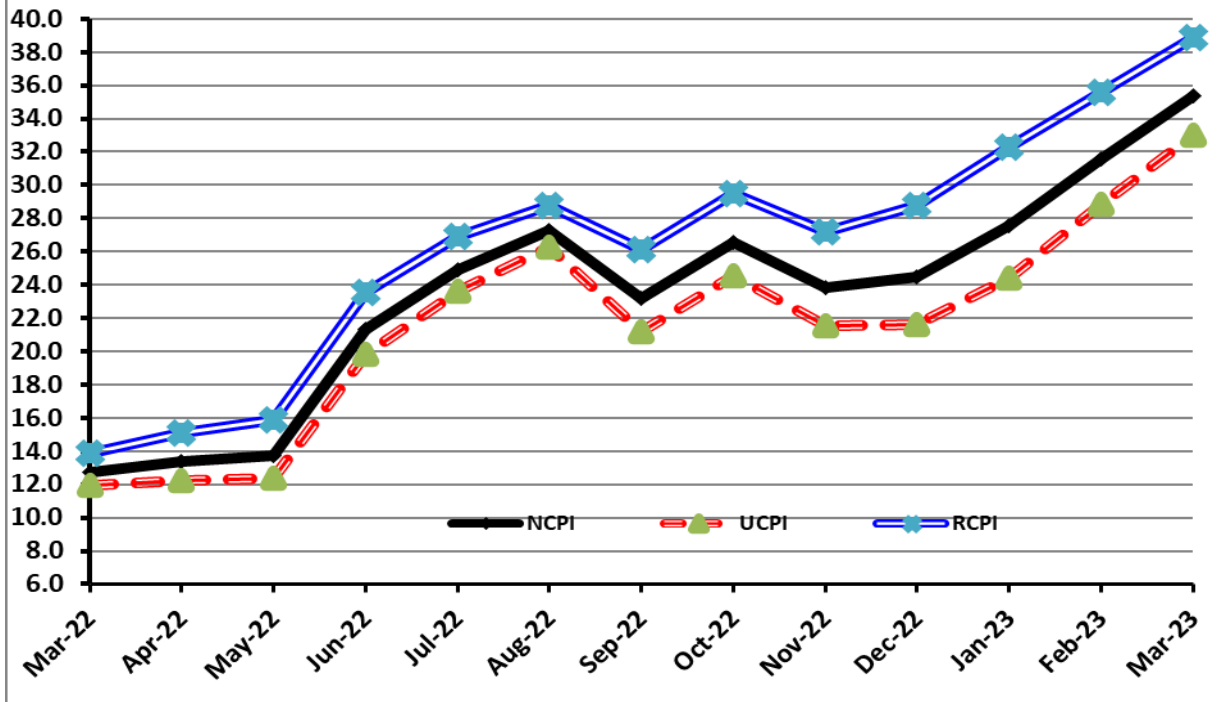
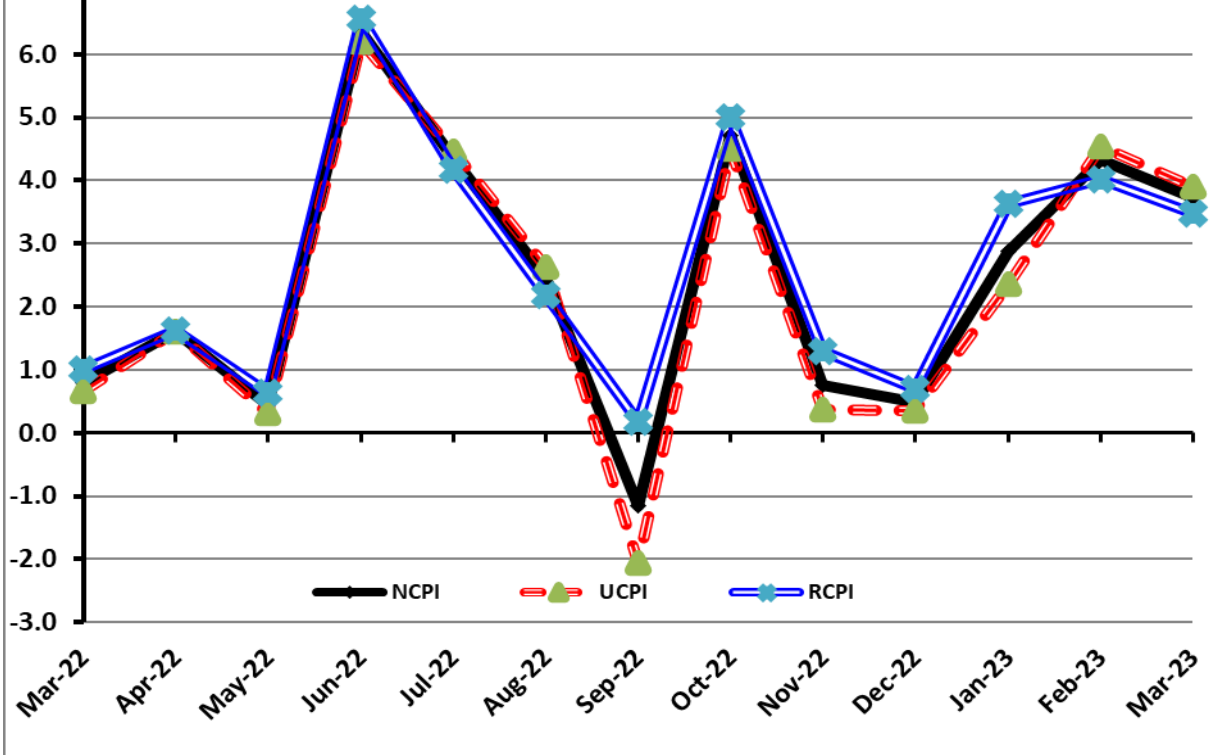


Figure 6: CPI MoM (National, Urban, Rural)



I. National Consumer Price Index (N-CPI)

The **National Consumer Price Index** for **March 2023** is increased to 3.72% over **February 2023** and increased to 35.37% over corresponding month of the last year i.e. **March 2022**.

Table 1: Consumer Price Index (National) by Group of Commodities and Services (Base 2015-16)

No	Group	Group Weight (%)	Indices			% Change Mar 2023 Over		Impact (In % points) Mar 2023 Over	
			Mar 23	Feb 23	Mar 22	Feb 23	Mar 22	Feb 23	Mar 22
	General	100.00	219.14	211.28	161.88	3.72	35.37	3.72	35.37
1.	Food & Non-alcoholic Bev.	34.58	250.25	241.28	170.06	3.72	47.15	1.47	17.13
	<i>Non-perishable Food Items</i>	29.60	252.47	242.96	172.40	3.92	46.44	1.33	14.64
	<i>Perishable Food Items</i>	4.99	237.11	231.30	156.19	2.51	51.81	0.14	2.49
2.	Alcoholic Bev. & Tobacco	1.02	353.14	219.42	147.13	60.94	140.02	0.65	1.30
3.	Clothing & Footwear	8.60	196.50	186.65	161.16	5.27	21.93	0.40	1.88
4.	Housing, Water, Electricity, Gas & Fuels	23.63	178.80	176.83	152.19	1.11	17.49	0.22	3.88
5.	Furnishing & Household Equipment Maintenance	4.10	220.20	209.51	158.42	5.10	38.99	0.21	1.56
6.	Health	2.79	197.84	197.25	167.01	0.30	18.46	0.01	0.53
7.	Transport	5.91	280.20	271.24	180.85	3.30	54.94	0.25	3.63
8.	Communication	2.21	117.64	114.36	110.31	2.87	6.64	0.03	0.10
9.	Recreation & Culture	1.59	205.86	199.72	136.71	3.08	50.59	0.05	0.68
10.	Education	3.79	166.90	164.80	155.72	1.27	7.18	0.04	0.26
11.	Restaurants & Hotels	6.92	224.10	215.81	161.81	3.84	38.49	0.27	2.66
12.	Miscellaneous	4.87	226.88	221.35	168.77	2.50	34.43	0.13	1.75

II. Urban Consumer Price Index (UCPI)

The Urban Consumer Price Index for **March 2023** is increased to 3.90% over **February 2023** and increased to 32.97% over corresponding month of the last year i.e. **March 2022**.

Table 2: Consumer Price Index (Urban) by Group of Commodities and Services (Base 2015-16)

No	Group	Group Weight (%)	Indices			% Change Mar 2023 Over		Impact (In % points) Mar 2023 Over	
			Mar 23	Feb 23	Mar 22	Feb 23	Mar 22	Feb 23	Mar 22
	General	100.00	212.85	204.87	160.07	3.90	32.97	3.90	32.97
1.	Food & Non-alcoholic Bev.	30.42	244.66	234.18	168.17	4.48	45.48	1.56	14.54
	<i>Non-perishable Food Items</i>	25.97	246.76	235.81	170.35	4.64	44.85	1.39	12.40
	<i>Perishable Food Items</i>	4.46	232.43	224.68	155.53	3.45	49.44	0.17	2.14
2.	Alcoholic Bev. & Tobacco	0.85	374.90	240.99	155.67	55.57	140.83	0.56	1.17
3.	Clothing & Footwear	8.01	194.04	183.44	158.48	5.78	22.44	0.41	1.78
4.	Housing, Water, Electricity, Gas & Fuels	27.03	173.72	171.88	151.06	1.07	15.00	0.24	3.83
5.	Furnishing & Household Equip. & Maintenance	4.09	217.40	206.59	155.73	5.23	39.60	0.22	1.58
6.	Health	2.31	197.03	196.23	167.16	0.41	17.87	0.01	0.43
7.	Transport	6.14	281.79	271.89	182.29	3.64	54.58	0.30	3.81
8.	Communication	2.35	122.10	117.76	112.57	3.69	8.47	0.05	0.14
9.	Recreation & Culture	1.73	200.57	194.76	132.47	2.98	51.41	0.05	0.74
10.	Education	4.88	168.64	166.56	159.39	1.25	5.80	0.05	0.28
11.	Restaurants & Hotels	7.41	225.06	216.08	160.94	4.16	39.84	0.32	2.97
12.	Miscellaneous	4.77	224.93	219.30	167.48	2.57	34.30	0.13	1.71

Main contributors to month-on-month and year-on-year percentage changes are given below and detail is given in **Annexure-A**.

1. MONTH-ON-MONTH Top few commodities which varied from previous month are given below:

FOOD

Increased: Cigarettes (70.34%), Tea (28.46%), Fresh Fruits (20.04%), Tomatoes (13.17%), Sugar (12.49%), Beverages (11.76%), Potatoes (11.26%), Wheat (8.29%), Wheat Flour (7.84%), Cooking Oil (7.04%), Fresh Vegetables (6.22%), Beans (5.43%), Vegetable Ghee (5.05%), Milk Fresh (4.50%), Rice (3.30%), Gram Whole (2.25%), Pulse Mash (1.73%), Bakery and Confectionary (1.23%), Besan (1.11%), Mustard Oil (0.95%), Meat (0.82%), Pulse Moong (0.47%) and Dry Fruits (0.35%)

Decreased: Onions (25.94%), Eggs (12.42%), Chicken (3.66%), Pulse Gram (1.51%) and Pulse Masoor (0.20%)

NON-FOOD

Increased: Cotton Cloth (13.3%), Household Equipments (10.56%), Motor Vehicles (6.73%), Electricity Charges (6.21%), Marriage Hall Charges (5.53%), Stationery (5.37%), Construction Wage Rates (3.75%), Transport Services (3.65%), Motor Vehicle Accessories (3.28%), Household Textiles (3.13%), Motor Fuel (3.09), Electrical Appliances for Personal (1.73%), Construction Input Items (1.32%), Education (1.25%), Medical Tests (1.20%), Tailoring (1.15%) and Household Servant (1.12%).

Decreased: Liquified Hydrocarbons (3.25%).

YEAR-ON-YEAR: Top few commodities which varied from corresponding month of previous year i.e. Feb, 2022 are given below:

Increased: Onions (257.62%), Cigarettes (171.17%), Tea (105.19%), Wheat (94.32%), Eggs (83.60%), Rice (82.41%), Wheat Flour (69.98%), Gram Whole (65.15%), Pulse Moong (58.27%), Besan (56.18%), Wheat Products (54.13%), Pulse Gram (53.78%), Pulse Mash (53.52%), Cooking Oil (53.51%), Fresh Fruits (51.31%), Dry Fruits (48.07%), Beans (43.61%), Chicken (41.93%), Vegetable Ghee (41.49%), Potatoes (41.4%), Mustard Oil (37.52%), Beverages (36.8%), Milk Fresh (35.86%), Pulse Masoor (26.94%), Fish (22.35%), Condiments and Spices (22.17%), Meat (20.83%), Sugar (19.43%) and Fresh Vegetables (18.93%).

Decreased: Tomatoes (33.46%).

NON-FOOD

Increased: Text Books (74.02%), Motor Fuel (71.61%), Stationery (67.00%), Gas Charges (62.82%), Motor Vehicles (45.54%), Household Equipments (41.93%), Motor Vehicle Accessories (39.64%), Construction Input Items (37.58%), Marriage Hall Charges (32.29%), Electricity Charges (31.73%), Transport Services (30.56%), Furniture and Furnishing (29.20%), Tailoring (24.30%), Mechanical Services (24.16%), Doctor (MBBS) Clinic Fee (22.86%), Construction Wage Rates (18.87%), Household Servant (18.41%), and Dental Services (13.60%).

III. Rural Consumer Price Index (RCPI)

The Rural Consumer Price Index for March 2023 is increased to 3.48% over February 2023 and increased to 38.88% over corresponding month of the last year i.e. March 2022.

Table 3: Consumer Price Index (Rural) by Group of Commodities and Services (Base 2015-16)

No	Group	Group Weight (%)	Indices			% Change Mar 2023 Over		Impact (In % points) Mar 2023 Over	
			Mar 23	Feb 23	Mar 22	Feb 23	Mar 22	Feb 23	Mar 22
	General	100.00	228.63	220.95	164.62	3.48	38.88	3.48	38.88
1.	Food & Non-alcoholic Bev.	40.87	256.54	249.25	172.19	2.92	48.99	1.35	20.94
	<i>Non-perishable Food Items</i>	35.08	258.85	250.94	174.70	3.15	48.17	1.26	17.93
	<i>Perishable Food Items</i>	5.79	242.54	239.00	156.95	1.48	54.53	0.09	3.01
2.	Alcoholic Bev. & Tobacco	1.28	331.19	197.68	138.51	67.54	139.11	0.77	1.50
3.	Clothing & Footwear	9.48	199.63	190.75	164.57	4.66	21.30	0.38	2.02
4.	Housing, Water, Electricity, Gas & Fuels	18.49	190.01	187.75	154.67	1.20	22.85	0.19	3.97
5.	Furnishing & Household Equip. & Maintenance	4.10	224.41	213.91	162.48	4.91	38.12	0.19	1.54
6.	Health	3.51	198.64	198.27	166.87	0.19	19.04	0.01	0.68
7.	Transport	5.56	277.55	270.16	178.44	2.74	55.54	0.19	3.35
8.	Communication	1.99	109.70	108.30	106.30	1.29	3.20	0.01	0.04
9.	Recreation & Culture	1.38	215.91	209.12	144.74	3.25	49.17	0.04	0.60
10.	Education	2.13	160.90	158.74	143.04	1.36	12.49	0.02	0.23
11.	Restaurants & Hotels	6.19	222.37	215.32	163.39	3.27	36.10	0.20	2.22
12.	Miscellaneous	5.02	229.69	224.30	170.62	2.40	34.62	0.12	1.80

Main contributors to Month-on-Month and Year-on-Year percentage changes are given below and detail is given in **Annexure-B**.

1. MONTH-ON-MONTH Top few commodities which varied from previous month are given below:

FOOD

Increased: Cigarettes (70.44%), Fresh Fruits (31.3%), Potatoes (17.65%), Beverages (13.63%), Tomatoes (10.13%), Sugar (9.55%), Pulse Mash (7.12%), Vegetable Ghee (5.82%), Cooking Oil (5.34%), Condiments and Spices (5.09%), Milk Fresh (4.01%), Rice (3.91%), Fresh Vegetables (3.42%), Bakery and Confectionary (3.23%), Wheat Flour (1.78%), Gram Whole (1.70%), Meat (1.58%), Besan (1.42%) and Wheat (0.78%).

Decreased: Onions (30.58%), Eggs (12.20%), Mustard Oil (2.31%), Chicken (2.06%), Pulse Masoor (1.95%), Pulse Gram (0.37%) and Pulse Moong (0.20%).

NON-FOOD:

Increased: Stationery (8.67%), Household Equipments (7.88%), Electricity Charges (6.21%), Appliances/Articles/Products for Personal Care (4.36%), Motor Vehicles Accessories (4.01%), Footwear (3.65%), Motor Fuels (3.24%), Tailoring (2.29%), Medical Tests (1.98%), Construction Wage Rates (1.89%), Construction Input Items (1.89%), Transport Services (1.50%), Education (1.36%), Text Books (1.15%) and Marriage Hall Charges (1.10%).

Decreased: Liquified Hydrocarbons (2.92%).

YEAR-ON-YEAR: Top few commodities which varied from corresponding month of previous year i.e. Feb, 2022 are given below:

FOOD

Increased: Onions (302.69%), Cigarettes (144.09%), Wheat (88.25%), Rice (81.04%), Eggs (75.34%), Fresh Fruits (72.56%), Wheat Products (68.00%), Gram Whole (64.96%), Pulse Moong (64.23%), Pulse Mash (63.92%), Besan (59.00%), Condiments and Spices (58.33%), Pulse Gram (56.56%), Wheat Flour (53.59), Chicken (47.01%), Potatoes (42.36%), Beans (40.26%), Milk Fresh (39.88%), Mustard Oil (38.85%), Cooking Oil (37.08%), Vegetable Ghee (36.34%), Pulse Masoor (31.81%), Beverages (31.50%), Meat (19.24%), Sugar (15.91%) and Fresh Vegetables (12.71%).

Decreased: Tomatoes (31.14%).

NON-FOOD

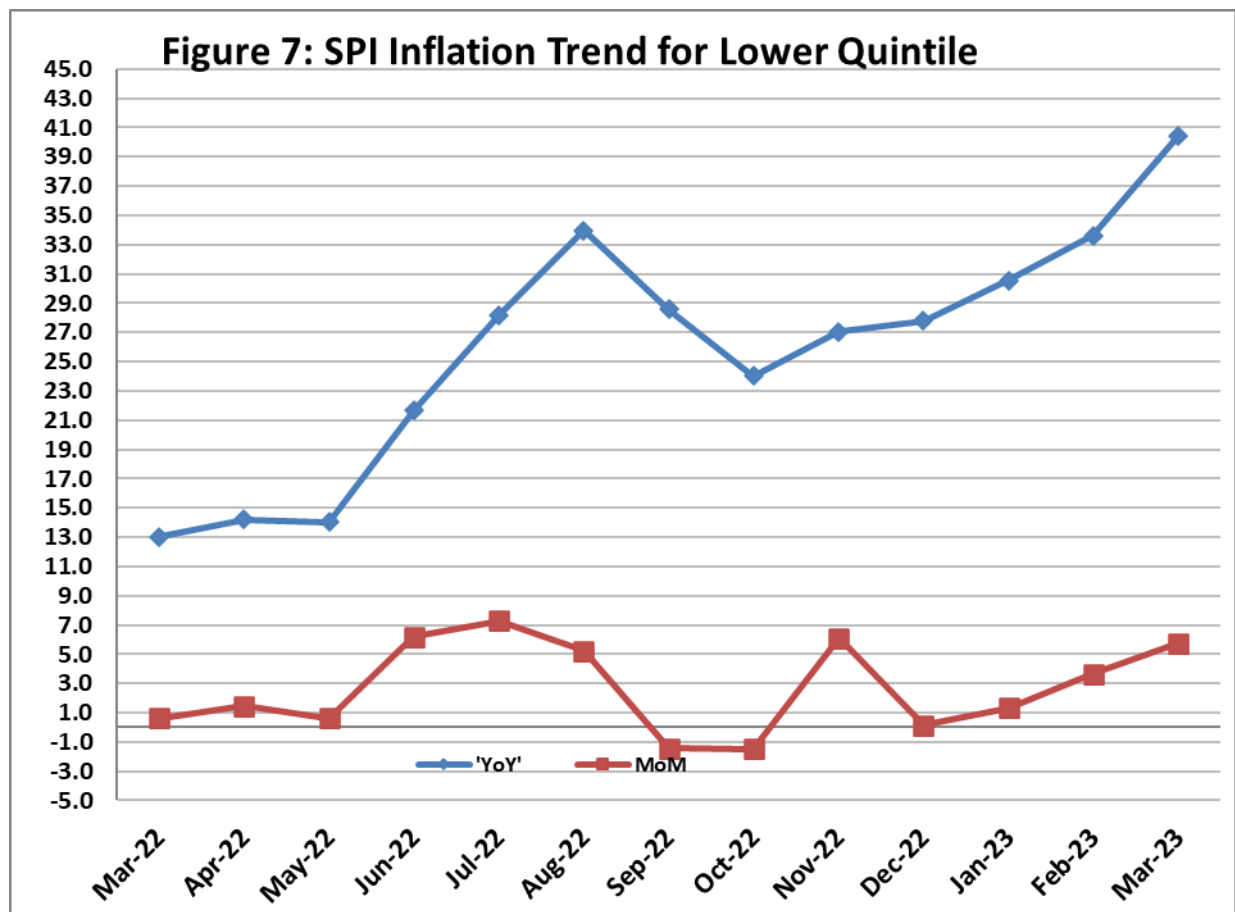
Increased: Motor Fuels (76.09%), Text Books (71.28%), Stationery (43.23%), Transport Services (39.25%), Motor Vehicles Accessories (38.75%), Construction Input Items (35.23%), Electricity Charges (31.73%), Marriage Hall Charges (31.23%), Motor Vehicles (25.77%), Motor Vehicle Tax (24.88%), Household Textiles (24.50%), Dental Services (23.52%), Footwear (19.45%), Doctor Clinic Fee (19.10%), Mechanical Services (16.90%), Construction Wage Rates (16.80%), Medical Tests (13.04%), Education (12.49%), Hospitals Services (7.21%), Accommodation Services (7.08%) and House Rent(6.9%).

IV. Sensitive Price Indicator

Quintile-wise percentage changes YoY and MoM are given below in Table 4. The series from March 2022 to March 2023 is also graphed below in Figure 7.

Table 4: Sensitive Price Indicator (Base 2015-16)					
Quintiles	Indices			% Change Mar 2023 Over	
	Mar 23	Feb 23	Mar 22	Feb 23	Mar 22
1	251.08	237.38	178.78	5.77	40.44
2	242.22	228.01	169.44	6.23	42.95
3	245.67	232.62	171.32	5.61	43.40
4	241.73	229.61	167.98	5.28	43.90
5	251.07	236.35	172.13	6.23	45.86
Combined	245.76	232.51	170.63	5.70	44.03

Table 4.1: Weekly Percentage Change of SPI During February 2023					
Quintiles	% Change with Previous week				
	02-03-2023	09-03-2023	16-03-2023	22-03-2023	30-03-2023
Quintile 1	-0.08	1.62	0.59	2.9	-0.42
Combined	-0.3	1.37	0.96	1.8	-0.36



V. Wholesale Price Index

The Wholesale Price Index for **March, 2023** increased by 4.67% over **February, 2023**. It increased to 37.52% over the corresponding month of the last year i.e. March, 2022. YoY and MoM movements, from March, 2022 to March, 2023 are also graphed below in Figure 8.

Table 5: Wholesale Price Index by Group of Commodities (Base 2015-16)

No	Group	Group Weight (%)	Indices			% Change Mar 2023 Over		Impact (In % points) Mar 2023 Over	
			Mar 23	Feb 23	Mar 22	Feb 23	Mar 22	Feb 23	Mar 22
	General	100.00	277.00	264.64	201.43	4.67	37.52	4.67	37.52
1	Agriculture Forestry & Fishery	25.77	265.41	267.29	206.82	-0.70	28.33	-0.18	7.50
2	Ores/Minerals, Elec., Gas & Water	12.01	245.85	233.44	194.00	5.32	26.73	0.56	3.09
3	Food, Beverages, Tobacco, Textiles & Leather Products	31.11	243.14	225.51	182.00	7.82	33.59	2.07	9.44
	i. Food Products, Beverages & Tobacco	20.07	254.27	233.05	177.32	9.11	43.40	1.61	7.67
	ii. Textiles & Apparels	10.33	226.64	214.76	194.74	5.53	16.38	0.46	1.64
	iii. Leather Products	0.71	168.62	168.62	129.02	0.00	30.69	0.00	0.14
4	Other Transportable Goods	22.40	327.07	305.49	231.35	7.06	41.37	1.83	10.64
5	Metal Product, Machinery & Equipment	8.72	346.33	334.47	188.22	3.55	84.00	0.39	6.84

Main contributors to month-on-month and year-on-year percentage changes are given below and detail is given in **Annexure-C**.

1. MONTH-ON-MONTH: Top few commodities which varied from previous month are given below:

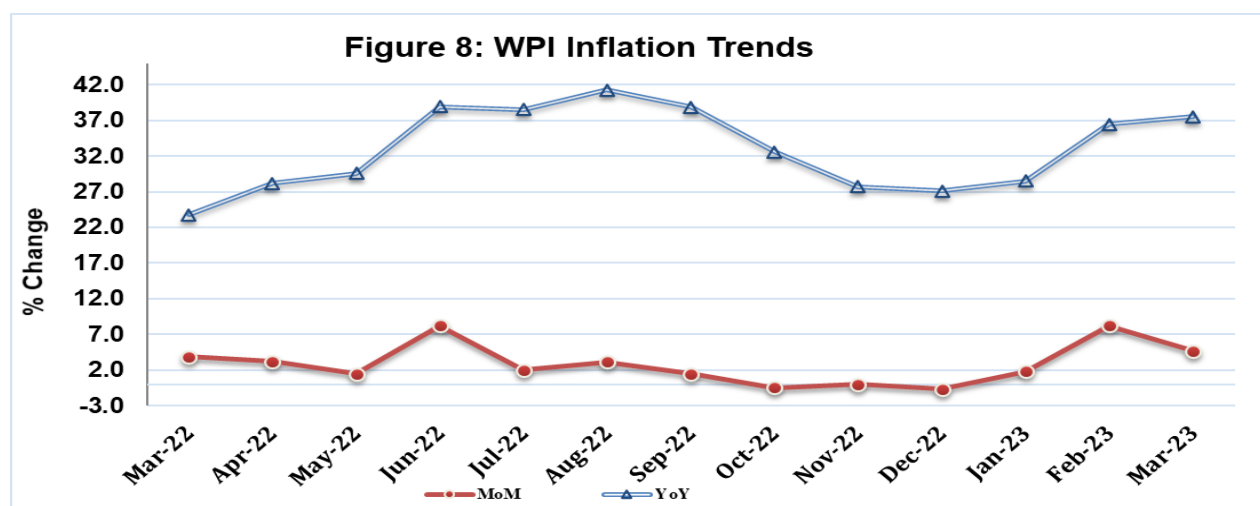
Increased: Tobacco Products (61.31%), Air Conditioners (59.42%), Hard Board (42.86%), Matches (39.78%), Salt & Pure Sodium Chloride (34.01%), Cotton Fabrics (30.23%), Printing Paper (28.92%), Furnace Oil (25.12%), Fresh Fruits (21.84%), Raw Animal Materials / Wool (21.59%), Radio & Television (21.22%), Silk & Rayon Fabrics (17.36%), Bed Sheets (17.26%), Other Fabrics (16.67%), Wheat Flour (15.35%), Dyeing Material (15.2%), Stimulant & Spice Crops (14.82%), Coffee & Tea (14.16%), Sugar Refined (13.81%), Woolen Carpets (13.22%), Beverages (12.14%) and Fruit Juices (12.08%).

Decreased: Eggs (12.93%), Fibre Crops (9.74%), Poultry (7.03%), Vegetables (5.2%), Kerosine Oil (3.7%), Millet / Bajra (1.59%), Chemicals (1.24%), Steel Bar & Sheets (0.85%), Natural Gas Liquified (0.45%) and Pesticides (0.16%).

YEAR-ON-YEAR: Top few commodities which varied from previous year are given below:

Increased: Lighting Equipments (387.16%), Tobacco Products (149.05%), Matches (130.2%), Stimulant & Spice Crops (124.27%), Chuff Cutter (119.8%), Printing Paper (103.16%), Dry Fruits (100.37%), Wheat (97.85%), Air Conditioners (97.45%), Pipe Fittings (88.28%), Wheat Flour (86.75%), Eggs (86.48%), Motor Spirit (81.08%), Dried Fruits & Nuts (78.2%), Glass sheets (77.85%), Diesel Oil (73.09%), Maize (69.4%), Fresh Fruits (68.81%), Rice (68.27%), Pulses (65.29%), Silk & Rayon Fabrics (64.14%), Cultivators (61.75%), Coffee & Tea (61.05%), Vegetables & Fruit Juice (60.44%), Other Fabrics (60.06%), Other Cereal Flour (59.04%), Concrete Mixture (56.22%), Auto Tyres (55.73%), Beverages (55.2%) and Steel Products (53.63%).

Decreased: Fiber Crops (1.77%) and Spices (1.22%).



Annexure A: CPI (Urban) Index Numbers by Commodity Groups & Commodities (2015-16=100)

Item and Specification	Weight	Index Numbers			% Change in Mar 2023 over			
		Mar 23	Feb 23	Mar 22	Feb 2023	Mar 2022		
General	100.0000	212.85	204.87	160.07	+	3.90	+	32.97
Food and non-alcoholic Bevera	30.4215	244.66	234.18	168.17	+	4.48	+	45.48
01 Wheat	0.6120	343.55	317.24	176.80	+	8.29	+	<u>94.32</u>
02 Wheat flour	3.0075	265.12	245.85	155.97	+	7.84	+	<u>69.98</u>
03 Wheat products	0.0936	278.52	268.60	180.71	+	3.69	+	<u>54.13</u>
04 Besan	0.0830	219.09	216.68	140.28	+	1.11	+	<u>56.18</u>
05 Rice	1.1804	288.08	278.87	157.93	+	3.30	+	<u>82.41</u>
06 Bakery and confectionary	0.4770	234.47	231.61	166.04	+	1.23	+	41.21
07 Nimco	0.1224	246.08	241.81	172.11	+	1.77	+	42.98
08 Meat	2.0411	235.41	233.50	194.83	+	0.82	+	20.83
09 Chicken	1.3631	293.32	304.46	206.67	-	3.66	+	41.93
10 Fish	0.3855	150.96	151.05	123.38	-	0.06	+	22.35
11 Milk fresh	7.1070	211.20	202.10	155.45	+	4.50	+	35.86
12 Milk products	0.6407	212.14	202.83	157.87	+	4.59	+	34.38
13 Milk powder	0.3106	208.81	206.83	156.17	+	0.96	+	33.71
14 Eggs	0.5083	281.66	321.62	153.41	-	12.42	+	<u>83.60</u>
15 Butter	0.0932	318.67	317.75	224.43	+	0.29	+	41.99
16 Mustard oil	0.0120	339.69	336.50	247.02	+	0.95	+	37.52
17 Cooking oil	1.1016	385.10	359.78	250.86	+	7.04	+	<u>53.51</u>
18 Vegetable ghee	1.0324	378.16	359.98	267.27	+	5.05	+	41.49
19 Dry fruits	0.3299	226.46	225.68	152.94	+	0.35	+	48.07
20 Fresh fruits	1.4363	260.54	217.05	172.19	+	20.04	+	<u>51.31</u>
21 Pulse masoor	0.1624	189.33	189.70	149.15	-	0.20	+	26.94
22 Pulse moong	0.1697	173.37	172.56	109.54	+	0.47	+	<u>58.27</u>
23 Pulse mash	0.1152	182.46	179.36	118.85	+	1.73	+	<u>53.52</u>
24 Pulse gram	0.1660	212.69	215.94	138.31	-	1.51	+	<u>53.78</u>
25 Gram whohe	0.0912	265.20	259.37	160.58	+	2.25	+	<u>65.15</u>
26 Beans	0.0408	260.30	246.89	181.26	+	5.43	+	43.61
27 Potatoes	0.4496	209.60	188.39	148.23	+	11.26	+	41.40
28 Onions	0.5928	322.57	435.56	90.20	-	25.94	+	<u>257.62</u>
29 Tomatoes	0.3459	121.71	107.55	182.91	+	13.17	-	33.46
30 Fresh vegetables	1.5306	191.27	180.07	160.82	+	6.22	+	18.93
31 Sugar	1.1130	168.83	150.09	141.36	+	12.49	+	19.43
32 Gur	0.0379	162.53	159.56	160.81	+	1.86	+	1.07
33 Honey	0.1017	171.43	168.15	156.08	+	1.95	+	9.83
34 Sweetmeat	0.3535	238.80	233.99	186.04	+	2.06	+	28.36
35 Ice cream	0.1044	184.05	172.02	147.48	+	6.99	+	24.80
36 Condiments and Spices	1.3340	214.94	205.07	175.93	+	4.81	+	22.17
37 Dessert preparation	0.0419	243.94	238.23	140.80	+	2.40	+	<u>73.25</u>
38 Tea	0.8427	325.18	253.13	158.48	+	28.46	+	<u>105.19</u>
39 Beverages	0.8906	191.53	171.38	140.01	+	11.76	+	36.80
Alcoholic Beverages, Tobacco	0.8540	374.90	240.99	155.67	+	55.57	+	140.83
40 Cigarettes	0.7167	382.60	224.61	141.09	+	<u>70.34</u>	+	<u>171.17</u>
41 Pan prepared	0.1373	334.70	326.48	231.75	+	2.52	+	44.42
Clothing and footwear	8.0096	194.04	183.44	158.48	+	5.78	+	22.44
42 Cotton cloth	2.2227	219.65	193.87	165.48	+	13.30	+	32.74
43 Woolen cloth	0.8361	189.24	178.63	153.75	+	5.94	+	23.08
44 Readymade garments	1.3196	175.47	167.73	146.41	+	4.61	+	19.85
45 Woolen readymade garments	0.4307	186.87	186.87	159.54	+	0.00	+	17.13
46 Tailoring	1.0741	194.50	192.29	156.47	+	1.15	+	24.30
47 Hosiry	0.4070	188.24	176.79	154.65	+	6.48	+	21.72
48 Dopatta	0.1713	160.22	153.39	136.27	+	4.45	+	17.58
49 Cleaning and laundring	0.0665	224.07	222.48	182.58	+	0.71	+	22.72
50 Footware	1.4816	180.76	180.66	165.08	+	0.06	+	9.50
Housing, water, Elec., Gas an	27.0332	173.72	171.88	151.06	+	1.07	+	15.00
51 House rent	19.2558	152.02	152.02	144.19	+	0.00	+	5.43
52 Construcion input items	0.3765	232.51	229.49	169.00	+	1.32	+	37.58
53 Construction wage rates	0.2025	198.02	190.86	166.59	+	3.75	+	18.87
54 Water supply	0.5269	172.57	171.98	164.74	+	0.34	+	4.75
55 Garbage collection	0.1064	209.09	208.44	182.71	+	0.31	+	14.44
56 Electricity charges	4.5562	196.25	184.78	148.98	+	6.21	+	31.73
57 Gas charges	1.0807	353.22	353.22	216.94	+	0.00	+	<u>62.82</u>

Annexure A: CPI (Urban) Index Numbers by Commodity Groups & Commodities (2015-16=100)

Item and Specification	Weight	Index Numbers			% Change in Mar 2023 over		
		Mar 23	Feb 23	Mar 22	Feb 2023	Mar 2022	
58 Liquified Hydrocarbons	0.5064	348.85	360.56	261.95	-	3.25	+ 33.17
59 Solid Fuel	0.4218	178.96	177.82	137.02	+	0.64	+ 30.61
<i>Furnishing and household equi</i>	4.0937	217.40	206.59	155.73	+	5.23	+ 39.60
60 Furniture and furnishing	0.4750	199.22	193.32	154.19	+	3.05	+ 29.20
61 Carpets	0.0308	140.05	134.27	121.86	+	4.30	+ 14.93
62 Household textiles	0.3420	166.48	161.42	142.76	+	3.13	+ 16.62
63 Household equipments	1.0032	221.57	200.41	156.11	+	10.56	+ 41.93
64 Plastic products	0.0536	174.77	169.88	135.42	+	2.88	+ 29.06
65 Major tools & equipments	0.0084	204.25	188.80	152.12	+	8.18	+ 34.27
66 Washing soap/detergents/match	1.4112	259.69	248.04	165.23	+	4.70	+ <u>57.17</u>
67 Household servant	0.7695	174.47	172.54	147.34	+	1.12	+ 18.41
<i>Health</i>	2.3098	197.03	196.23	167.16	+	0.41	+ 17.87
68 Drugs and medicines	1.0735	203.87	204.50	169.37	-	0.31	+ 20.37
69 Therapeutic Appliances and Eq	0.0054	128.98	127.90	122.87	+	0.84	+ 4.97
70 Doctor (MBBS) clinic fee	0.4044	254.96	252.15	207.52	+	1.11	+ 22.86
71 Dental services	0.0156	153.74	150.80	135.34	+	1.95	+ 13.60
72 Medical tests	0.2367	170.22	168.20	142.89	+	1.20	+ 19.13
73 Hospitals services	0.5742	156.31	154.82	145.87	+	0.96	+ 7.16
<i>Transport</i>	6.1368	281.79	271.89	182.29	+	3.64	+ 54.58
74 Motor vehicles	0.8097	247.09	231.51	169.77	+	6.73	+ 45.54
75 Motor vehicle accessories	0.1941	226.07	218.88	161.89	+	3.28	+ 39.64
76 Motor fuel	2.9088	360.75	349.92	210.22	+	3.09	+ <u>71.61</u>
77 Mechanical services	0.4290	192.33	185.22	154.90	+	3.84	+ 24.16
78 Motor vehicle tax	0.0482	148.53	148.53	136.37	+	0.00	+ 8.92
79 Transport services	1.7470	198.25	191.27	151.85	+	3.65	+ 30.56
<i>Communication</i>	2.3536	122.10	117.76	112.57	+	3.69	+ 8.47
80 Postal services	0.0190	190.07	189.66	164.62	+	0.22	+ 15.46
81 Communication apparatus	0.4524	175.72	153.13	129.54	+	14.75	+ 35.65
82 Communication Services	1.8822	108.53	108.53	107.97	+	0.00	+ 0.52
<i>Recreation and culture</i>	1.7301	200.57	194.76	132.47	+	2.98	+ 51.41
83 Recreation and culture	0.6478	143.02	136.14	118.21	+	5.05	+ 20.99
84 Text books	0.6655	235.21	233.44	135.16	+	0.76	+ <u>74.02</u>
85 Newspapers	0.0716	157.93	157.93	151.55	+	0.00	+ 4.21
86 stationery	0.3452	250.61	237.83	150.07	+	5.37	+ <u>67.00</u>
<i>Education</i>	4.8807	168.64	166.56	159.39	+	1.25	+ 5.80
87 Education	4.8807	168.64	166.56	159.39	+	1.25	+ 5.80
<i>Restaurants and hotels</i>	7.4050	225.06	216.08	160.94	+	4.16	+ 39.84
88 Readymade food	5.5235	233.21	224.60	163.34	+	3.83	+ 42.78
89 Marriage Hall Charges	1.7514	206.64	195.81	156.20	+	5.53	+ 32.29
90 Accommodation Services	0.1301	127.26	127.23	122.69	+	0.02	+ 3.72
<i>Misc. goods and services</i>	4.7720	224.93	219.30	167.48	+	2.57	+ 34.30
91 Personal Grooming Services	0.8001	199.48	198.41	152.27	+	0.54	+ 31.00
92 Electrical Appliances for Per	0.0465	149.12	146.58	132.18	+	1.73	+ 12.82
93 Appliances/Articles/Products	2.9807	207.49	200.88	154.47	+	3.29	+ 34.32
94 Personal Effects n.e.c.	0.9447	305.23	298.70	223.16	+	2.19	+ 36.78

Annexure B: CPI (Rural) Index Numbers by Commodity Groups & Commodities (2015-16=100)

Item and Specification	Weight	Index Numbers			% Change in Mar 2023 over			
		Mar 23	Feb 23	Mar 22	Feb 2023	Mar 2022		
General	100.0000	228.63	220.95	164.62	+	3.48	+	38.88
Food and non-alcoholic Bevera	40.8668	256.54	249.25	172.19	+	2.92	+	48.99
01 Wheat	3.4736	343.15	340.48	182.28	+	0.78	+	<u>88.25</u>
02 Wheat Flour	3.4297	259.15	254.61	168.73	+	1.78	+	<u>53.59</u>
03 Wheat Products	0.1068	281.62	279.37	167.63	+	0.81	+	<u>68.00</u>
04 Besan	0.0728	230.09	226.87	144.71	+	1.42	+	<u>59.00</u>
05 Rice	1.5501	364.07	350.38	201.10	+	3.91	+	<u>81.04</u>
06 Bakery and Confectionary	0.3702	249.60	241.79	168.58	+	3.23	+	48.06
07 Nimco	0.0774	242.30	236.74	159.87	+	2.35	+	<u>51.56</u>
08 Meat	1.7146	235.90	232.22	197.84	+	1.58	+	19.24
09 Chicken	1.4641	313.63	320.23	213.34	-	2.06	+	47.01
10 Fish	0.2640	167.41	167.16	138.65	+	0.15	+	20.74
11 Milk fresh	10.3803	206.71	198.75	147.78	+	4.01	+	39.88
12 Milk products	0.9624	195.95	192.29	144.25	+	1.90	+	35.84
13 Milk powder	0.1062	180.51	179.03	135.55	+	0.83	+	33.17
14 Eggs	0.5665	275.44	313.70	157.09	-	12.20	+	<u>75.34</u>
15 Butter	0.3333	213.94	208.77	169.47	+	2.48	+	26.24
16 Mustard oil	0.0136	345.54	353.72	248.86	-	2.31	+	38.85
17 Cooking oil	0.6011	412.64	391.72	301.03	+	5.34	+	37.08
18 Vegetable ghee	2.3764	406.96	384.56	298.49	+	5.82	+	36.34
19 Dry fruits	0.2496	268.71	263.01	174.45	+	2.17	+	<u>54.03</u>
20 Fresh fruits	1.4505	297.84	226.84	172.60	+	31.30	+	<u>72.56</u>
21 Pulse Masoor	0.2076	209.80	213.97	159.17	-	1.95	+	31.81
22 Pulse Moong	0.2510	189.85	190.23	115.60	-	0.20	+	<u>64.23</u>
23 Pulse Mash	0.1465	189.83	177.22	115.81	+	7.12	+	<u>63.92</u>
24 Pulse Gram	0.2751	218.61	219.42	139.63	-	0.37	+	<u>56.56</u>
25 Gram Whole	0.1116	271.72	267.17	164.72	+	1.70	+	<u>64.96</u>
26 Beans	0.0896	276.32	268.11	197.00	+	3.06	+	40.26
27 Potatoes	0.7437	217.32	184.71	152.66	+	17.65	+	42.36
28 Onions	0.8965	337.09	485.57	83.71	-	30.58	+	<u>302.69</u>
29 Tomatoes	0.5069	123.23	111.90	178.95	+	10.13	-	31.14
30 Fresh Vegetables	2.0947	194.82	188.38	172.85	+	3.42	+	12.71
31 Sugar	2.0296	165.93	151.46	143.15	+	9.55	+	15.91
32 Gur	0.1522	165.81	160.93	150.32	+	3.03	+	10.30
33 Honey	0.0296	170.80	170.45	160.45	+	0.21	+	6.45
34 Sweetmeat	0.3967	230.26	224.87	166.69	+	2.40	+	38.14
35 Ice Cream	0.0568	161.90	161.27	144.57	+	0.39	+	11.99
36 Condiments and Spices	1.4919	255.17	242.81	161.16	+	5.09	+	<u>58.33</u>
37 Dessert Preparation	0.0133	240.83	221.48	139.21	+	8.74	+	<u>73.00</u>
38 Tea	1.2566	279.12	247.60	154.31	+	12.73	+	<u>80.88</u>
39 Beverages	0.5537	185.21	162.99	140.84	+	13.63	+	31.50
Alcoholic Beverages, Tobacco	1.2786	331.19	197.68	138.51	+	67.54	+	139.11
40 Cigarettes	1.2364	333.30	195.55	136.55	+	70.44	+	<u>144.09</u>
41 Pan Prepared	0.0422	269.41	260.04	195.89	+	3.60	+	37.53
Clothing and footwear	9.4826	199.63	190.75	164.57	+	4.66	+	21.30
42 Cotton Cloth	2.8381	218.06	203.32	179.95	+	7.25	+	21.18
43 Woolen Cloth	1.0959	192.85	184.81	157.53	+	4.35	+	22.42
44 Readymade Garments	1.1345	191.15	181.76	157.00	+	5.17	+	21.75
45 Woolen Readymade Garments	0.5401	193.86	193.86	164.85	+	0.00	+	17.60
46 Tailoring	1.2999	192.79	188.48	157.60	+	2.29	+	22.33
47 Hosiery	0.4322	264.67	254.40	207.08	+	4.04	+	27.81
48 Dopatta	0.2078	179.95	174.35	154.50	+	3.21	+	16.47
49 Cleaning and Laundering	0.0176	212.92	212.69	169.05	+	0.11	+	25.95
50 Footwear	1.9165	174.87	168.71	146.40	+	3.65	+	19.45
Housing, water, Elec., Gas an	18.4853	190.01	187.75	154.67	+	1.20	+	22.85
51 House Rent	8.6110	155.09	155.09	145.08	+	0.00	+	6.90
52 Construction Input Items	0.6306	203.21	199.44	150.27	+	1.89	+	35.23
53 Construction Wage Rates	0.2526	200.62	196.89	171.77	+	1.89	+	16.80
54 Water Supply	0.0645	222.06	222.06	218.49	+	0.00	+	1.63
55 Garbage Collection	0.0080	169.61	169.61	160.34	+	0.00	+	5.78
56 Electricity Charges	3.4431	196.25	184.78	148.98	+	6.21	+	31.73
57 Liquified Hydrocarbons	0.9994	303.74	312.88	214.96	-	2.92	+	41.30

Annexure B: CPI (Rural) Index Numbers by Commodity Groups & Commodities (2015-16=100)

Item and Specification	Weight	Index Numbers			% Change in Mar 2023 over	
		Mar 23	Feb 23	Mar 22	Feb 2023	Mar 2022
58 Solid Fuel	4.4761	224.10	222.29	162.75	+ 0.81	+ 37.70
<i>Furnishing and household equi</i>	4.1031	224.41	213.91	162.48	+ 4.91	+ 38.12
59 Furniture and furnishing	0.5786	206.33	201.90	160.79	+ 2.19	+ 28.32
60 Household Textiles	0.4382	188.39	184.72	151.32	+ 1.99	+ 24.50
61 Household Equipments	1.2774	222.53	206.27	165.57	+ 7.88	+ 34.40
62 Plastic Products	0.0776	216.23	210.58	174.69	+ 2.68	+ 23.78
63 Major Tools and Equipments	0.0324	198.64	188.56	140.46	+ 5.35	+ 41.42
64 Washing Soaps, Detergents and	1.6989	242.13	231.91	163.48	+ 4.41	+ 48.11
<i>Health</i>	3.5141	198.64	198.27	166.87	+ 0.19	+ 19.04
65 Drugs and Medicines	1.5792	218.40	218.92	172.57	- 0.24	+ 26.56
66 Doctor Clinic Fee	0.5128	243.97	242.71	204.84	+ 0.52	+ 19.10
67 Dental Services	0.0181	176.77	176.77	143.11	+ 0.00	+ 23.52
68 Medical Tests	0.3967	182.77	179.22	161.68	+ 1.98	+ 13.04
69 Hospitals Services	1.0073	151.24	151.17	141.07	+ 0.05	+ 7.21
<i>Transport</i>	5.5580	277.55	270.16	178.44	+ 2.74	+ 55.54
70 Motor Vehicles	0.7305	182.26	176.78	144.91	+ 3.10	+ 25.77
71 Motor Vehicles Accessories	0.1572	225.14	216.45	162.26	+ 4.01	+ 38.75
72 Motor Fuels	2.4932	363.68	352.25	206.53	+ 3.24	+ 76.09
73 Mechanical Services	0.3645	192.96	189.26	165.07	+ 1.95	+ 16.90
74 Motor Vehicle Tax	0.0174	150.93	150.93	120.86	+ 0.00	+ 24.88
75 Transport Services	1.7952	219.69	216.45	157.77	+ 1.50	+ 39.25
<i>Communication</i>	1.9940	109.70	108.30	106.30	+ 1.29	+ 3.20
76 Postal Services	0.0070	149.43	149.43	149.43	+ 0.00	+ 0.00
77 Communication Apparatus	0.3362	143.80	135.51	124.45	+ 6.12	+ 15.55
78 Communication Services	1.6508	102.58	102.58	102.42	+ 0.00	+ 0.16
<i>Recreation and culture</i>	1.3764	215.91	209.12	144.74	+ 3.25	+ 49.17
79 Recreation and Culture	0.4763	202.40	199.96	147.98	+ 1.22	+ 36.78
80 Text Books	0.5047	218.26	215.78	127.43	+ 1.15	+ 71.28
81 Newspapers	0.0230	165.72	165.72	165.56	+ 0.00	+ 0.10
82 Stationery	0.3724	233.10	214.50	162.75	+ 8.67	+ 43.23
<i>Education</i>	2.1342	160.90	158.74	143.04	+ 1.36	+ 12.49
83 Education	2.1342	160.90	158.74	143.04	+ 1.36	+ 12.49
<i>Restaurants and hotels</i>	6.1895	222.37	215.32	163.39	+ 3.27	+ 36.10
84 Readymade Food	3.8001	245.00	234.75	176.16	+ 4.37	+ 39.08
85 Marriage Hall Charges	2.2525	191.09	189.02	145.61	+ 1.10	+ 31.23
86 Accommodation Services	0.1369	108.81	108.81	101.62	+ 0.00	+ 7.08
<i>Misc. goods and services</i>	5.0174	229.69	224.30	170.62	+ 2.40	+ 34.62
87 Personal Grooming Services	1.5363	237.11	233.62	176.78	+ 1.49	+ 34.13
88 Appliances/Articles/Products	2.2746	182.08	174.47	143.44	+ 4.36	+ 26.94
89 Personal Effects n.e.c.	1.2065	310.02	306.39	214.03	+ 1.18	+ 44.85

Annexure C: Wholesale Price Indices by Major Groups & Commodities (2015-16=100)

Item and Specification	Weight	Index Numbers			% Change in Mar 2023 over			
		Mar 23	Feb 23	Mar 22	Feb 2023	Mar 2022		
General	100.0000	277.00	264.64	201.43	+	4.67	+	37.52
Agriculture Forestry & Fisher	25.7674	265.41	267.29	206.82	-	0.70	+	28.33
001 Wheat	0.6297	344.97	316.05	174.36	+	9.15	+	<u>97.85</u>
002 Maize	0.6764	289.51	281.31	170.90	+	2.91	+	<u>69.40</u>
003 Rice	2.4413	307.87	304.05	182.96	+	1.26	+	<u>68.27</u>
004 Sorghum / Jowar	0.0214	283.41	266.45	233.80	+	6.37	+	21.22
005 Millet / Bajra	0.0374	262.00	266.22	193.35	-	1.59	+	35.51
006 Vegetables	1.2441	257.68	271.82	191.86	-	5.20	+	34.31
007 Fresh Fruits	1.5144	321.33	263.73	190.35	+	21.84	+	<u>68.81</u>
008 Dry Fruits	0.2478	290.18	264.90	144.82	+	9.54	+	<u>100.37</u>
009 Cotton Seeds	1.1511	195.17	180.43	146.82	+	8.17	+	32.93
010 Other Oil Seeds	0.0722	343.13	328.65	257.11	+	4.41	+	33.46
011 Edible Roots / Potatoes	0.2540	249.06	228.48	171.12	+	9.01	+	45.55
012 Stimulant & Spice Crops	0.1634	447.76	389.98	199.65	+	14.82	+	<u>124.27</u>
013 Pulses	0.4901	255.50	245.49	154.58	+	4.08	+	<u>65.29</u>
014 Sugar Crops	1.0725	201.93	185.17	157.93	+	9.05	+	27.86
015 Fibre Crops	5.3169	367.69	407.38	374.33	-	9.74	-	1.77
016 Unmanufactured Tobacco	0.0742	287.94	277.83	259.68	+	3.64	+	10.88
017 Poultry	0.5633	287.68	309.43	200.87	-	7.03	+	43.22
018 Raw Milk from Bovine Animals	7.0279	200.50	196.75	153.70	+	1.91	+	30.45
019 Eggs	0.5034	274.22	314.93	147.05	-	12.93	+	<u>86.48</u>
020 Raw Animal Materials / Wool	0.0351	137.77	113.31	108.00	+	21.59	+	27.56
021 Hides, Skins & Fur Skins, Raw	0.4834	51.13	46.32	33.33	+	10.38	+	<u>53.41</u>
022 Fuel Wood in Logs	0.0179	176.83	176.69	134.22	+	0.08	+	31.75
023 Fish Live Fresh or Chilled	1.7295	192.81	192.66	158.50	+	0.08	+	21.65
Ores/Minerals, Elec., Gas & W	12.0069	245.85	233.44	194.00	+	5.32	+	26.73
024 Coal not Agglomerated	0.7508	180.41	171.95	119.31	+	4.92	+	<u>51.21</u>
025 Natural Gas Liquefied	5.7065	245.13	246.23	210.43	-	0.45	+	16.49
026 Salt & Pure Sodium Chloride	0.0584	285.88	213.32	189.94	+	34.01	+	<u>50.51</u>
027 Electrical Energy	5.4912	255.12	228.76	187.19	+	11.52	+	36.29
Food, Beverages, Tobacco, Textil	31.1122	243.14	225.51	182.00	+	7.82	+	33.59
Food Products, Beverages &	20.0718	254.27	233.05	177.32	+	9.11	+	43.40
028 Meat of Animals	3.4559	228.17	227.99	196.60	+	0.08	+	16.06
029 Vegetables & Fruit Juice	0.0058	208.76	203.53	130.12	+	2.57	+	<u>60.44</u>
030 Dried Fruits & Nuts	0.1733	330.71	319.58	185.58	+	3.48	+	<u>78.20</u>
031 Fruit Juices	0.3880	197.88	176.56	135.97	+	12.08	+	45.53
032 Vegetable Oils Refined	1.9242	294.61	285.77	220.22	+	3.09	+	33.78
033 Vegetable Ghee	1.5632	395.45	388.71	297.78	+	1.73	+	32.80
034 Oil Cakes	0.9611	254.69	239.05	186.63	+	6.54	+	36.47
035 Processed Liquid Milk	4.4437	224.99	208.23	154.18	+	8.05	+	45.93
036 Milk & Cream in Solid Form	0.0316	218.30	216.11	143.15	+	1.01	+	<u>52.50</u>
037 Ice Cream	0.0047	182.12	167.02	148.21	+	9.04	+	22.88
038 Dairy Products N.E.C	0.0117	221.79	208.99	150.50	+	6.12	+	47.37
039 Wheat Flour	2.3034	311.01	269.62	166.54	+	15.35	+	<u>86.75</u>
040 Other Cereal Flour	0.0604	233.45	233.31	146.79	+	0.06	+	<u>59.04</u>
041 Sugar Refined	1.7975	169.79	149.19	142.46	+	13.81	+	19.18
042 Chocolate	0.0139	97.97	96.68	90.05	+	1.33	+	8.80
043 Sugar Confectionary	0.0738	208.55	202.90	189.00	+	2.78	+	10.34
044 Coffee & Tea	0.7303	242.55	212.47	150.61	+	14.16	+	<u>61.05</u>
045 Spices	0.1449	216.76	216.34	219.44	+	0.19	-	1.22
046 Other Food Products	0.0336	156.61	154.03	118.94	+	1.67	+	31.67
047 Mineral Water	0.0207	182.77	173.88	139.24	+	5.11	+	31.26
048 Beverages	0.6303	210.19	187.43	135.43	+	12.14	+	<u>55.20</u>
049 Tobacco Products	1.2998	259.58	160.92	104.23	+	<u>61.31</u>	+	<u>149.05</u>
Textiles & Apparels	10.3289	226.64	214.76	194.74	+	5.53	+	16.38
050 Cotton Yarn	5.2491	239.61	239.61	239.61	+	0.00	+	0.00
051 Nylon Yarn	0.1719	95.24	95.24	95.24	+	0.00	+	0.00
052 Blended Yarn	0.1689	148.12	148.12	148.12	+	0.00	+	0.00
053 Woven Fabrics	0.0128	192.24	188.89	170.33	+	1.77	+	12.86
054 Cotton Fabrics	0.6343	262.93	201.89	174.86	+	30.23	+	<u>50.37</u>
055 Other Fabrics	1.1016	205.72	176.33	128.53	+	16.67	+	<u>60.06</u>
056 Silk & Rayon Fabrics	0.7350	298.48	254.33	181.84	+	17.36	+	<u>64.14</u>
057 Towels	0.1235	181.11	172.09	153.10	+	5.24	+	18.30
058 Blankets	0.0029	138.45	137.84	105.56	+	0.44	+	31.16

Annexure C: Wholesale Price Indices by Major Groups & Commodities (2015-16=100)

Item and Specification	Weight	Index Numbers			% Change in Mar 2023 over	
		Mar 23	Feb 23	Mar 22	Feb 2023	Mar 2022
059 Bed Sheets	0.0913	160.53	136.90	132.62	+ 17.26	+ 21.05
060 Quilts	0.0019	175.10	175.10	131.51	+ 0.00	+ 33.15
061 Woolen Carpets	0.0383	166.01	146.63	146.63	+ 13.22	+ 13.22
062 Synthetic Carpets	0.0566	132.43	132.43	125.27	+ 0.00	+ 5.72
063 Hosiery Products	0.8832	178.85	172.71	146.70	+ 3.56	+ 21.92
064 Readymade Garments	1.0576	205.23	196.04	141.93	+ 4.69	+ 44.60
Leather Products	0.7115	168.62	168.62	129.02	+ 0.00	+ 30.69
065 Leather Without Hair	0.2973	157.44	157.44	126.46	+ 0.00	+ 24.50
066 Other Leather N.E.C	0.2567	153.47	153.47	118.07	+ 0.00	+ 29.98
067 Footwears	0.1575	214.40	214.40	151.69	+ 0.00	+ 41.34
Other Transportable Goods	22.3979	327.07	305.49	231.35	+ 7.06	+ 41.37
068 Timber	0.0165	203.41	202.77	164.93	+ 0.32	+ 23.33
069 Printing Paper	0.4279	265.53	205.96	130.70	+ 28.92	+ <u>103.16</u>
070 Hard Board	0.1579	209.29	146.50	146.50	+ 42.86	+ 42.86
071 Motor Spirit	1.6268	383.04	370.49	211.53	+ 3.39	+ <u>81.08</u>
072 Diesel Oil	5.4849	379.31	378.16	219.14	+ 0.30	+ <u>73.09</u>
073 Kerosine Oil	0.2151	370.68	384.94	246.24	- 3.70	+ <u>50.54</u>
074 Furnace Oil	3.2664	528.22	422.16	501.26	+ 25.12	+ 5.38
075 Mobil Oil	0.7114	217.14	209.32	145.07	+ 3.74	+ 49.68
076 Chemicals	1.7720	326.95	331.04	216.07	- 1.24	+ <u>51.32</u>
077 Dyeing Material	0.1539	168.38	146.16	146.16	+ 15.20	+ 15.20
078 Fertilizers	2.8657	204.58	202.85	152.97	+ 0.85	+ 33.74
079 Pesticides	0.2763	157.58	157.83	147.77	- 0.16	+ 6.64
080 Insecticides	0.1276	111.49	111.49	111.49	+ 0.00	+ 0.00
081 Paints & Varnishes	0.1916	233.17	226.77	154.44	+ 2.82	+ <u>50.98</u>
082 Medicines	1.1428	254.17	248.83	168.24	+ 2.15	+ <u>51.08</u>
083 Soaps & Detergents	0.8168	198.03	187.23	134.14	+ 5.77	+ 47.63
084 Auto Tyres	0.2703	234.14	223.11	150.35	+ 4.94	+ <u>55.73</u>
085 Plastic Products	0.4550	153.61	145.20	125.96	+ 5.79	+ 21.95
086 Glass sheets	0.2089	269.52	246.23	151.54	+ 9.46	+ <u>77.85</u>
087 Other Glass Articles	0.1635	160.55	160.55	158.06	+ 0.00	+ 1.58
088 Ceramics & Sanitary Fixture	0.0244	179.64	179.35	138.35	+ 0.16	+ 29.84
089 Bricks, Blocks & Tiles	0.1566	169.05	165.94	146.48	+ 1.87	+ 15.41
090 Cement	1.8145	207.76	206.48	157.81	+ 0.62	+ 31.65
091 Bed Foam	0.0006	295.62	279.63	200.24	+ 5.72	+ 47.63
092 Matches	0.0505	2824.35	2020.51	1226.90	+ 39.78	+ <u>130.20</u>
Metal Product, Machinery & Eq	8.7156	346.33	334.47	188.22	+ 3.55	+ <u>84.00</u>
093 Steel Bar & Sheets	1.4615	360.64	363.73	265.67	- 0.85	+ 35.75
094 Pipe Fittings	0.0780	403.20	403.20	214.15	+ 0.00	+ <u>88.28</u>
095 Steel Products	0.3879	216.96	209.31	141.22	+ 3.65	+ <u>53.63</u>
096 Engines & Motors	0.0046	117.67	117.67	117.67	+ 0.00	+ 0.00
097 Vacuum Pumps	0.0155	107.56	107.56	107.56	+ 0.00	+ 0.00
098 Air Conditioners	0.0049	304.70	191.13	154.32	+ <u>59.42</u>	+ <u>97.45</u>
099 Cultivators	0.0551	282.23	282.23	174.49	+ 0.00	+ <u>61.75</u>
100 Chuff Cutter	0.1293	471.00	433.28	214.29	+ 8.71	+ <u>119.80</u>
101 Tractors	0.0028	244.39	244.39	169.16	+ 0.00	+ 44.47
102 Lathe Machines	0.0525	408.48	408.48	270.02	+ 0.00	+ <u>51.28</u>
103 Concrete Mixture	0.0107	255.01	255.01	163.24	+ 0.00	+ <u>56.22</u>
104 Fridge, WashM, SewM, Fans, Iron	1.1645	238.92	218.60	171.87	+ 9.30	+ 39.01
105 Electric Wires	0.0912	225.87	225.26	148.23	+ 0.27	+ <u>52.38</u>
106 Lighting Equipments	1.4431	656.79	637.78	134.82	+ 2.98	+ <u>387.16</u>
107 Radio & Television	0.1843	171.54	141.51	112.72	+ 21.22	+ <u>52.18</u>
108 Motor Vehicles	0.0244	248.43	244.95	168.42	+ 1.42	+ 47.51
109 Motorcycles	0.2570	244.03	219.11	160.30	+ 11.37	+ <u>52.23</u>
110 Bicycles	3.3483	275.89	265.05	194.03	+ 4.09	+ 42.19
