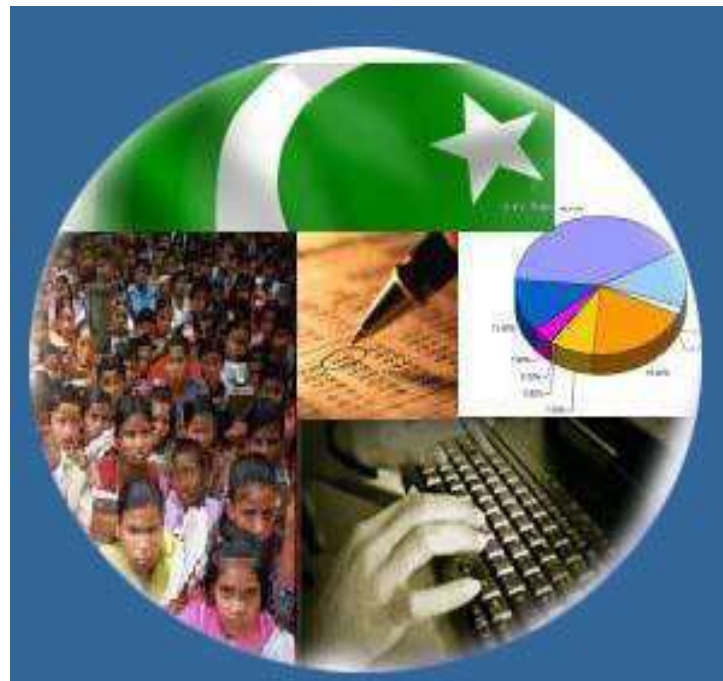




Monthly Review on Price Indices



June 2024
(Base Year 2015-16)

Government of Pakistan
Ministry of Planning, Development & Special Initiatives
Pakistan Bureau of Statistics
Islamabad

PRICE STATISTICS TEAM

S#	Name	Designation
1.	Dr. Naeem Uz Zafar	Chief Statistician
2.	Dr. Bahrawar Jan	Deputy Director General
3.	Mr. Naseer Ahmad	Director
4.	Dr. Ahtasham Gul	Chief Statistical Officer
5.	Mr. Adnan Shams	Statistical Officer
6.	Mr. Kashif Ali	Statistical Officer
7.	Miss. Umaira Zareen	Statistical Officer
8.	Mr. Kashif Yaqoob	Statistical Officer
9.	Mr. Umer Farooq	Statistical Assistant
10.	Mr. Ansar Mahmood	Statistical Assistant
12.	Mrs. Madiha Gulfraz	Statistical Assistant
13.	Mrs. Humail Fatima	Statistical Assistant
14.	Mr. Muhammad Asif	Statistical Assistant

IT & SOFTWARE TEAM

1.	Mr. Muhammad Ehtesham	Director (DP)
2.	Mrs. Sobia Munawar	Director (DP)
3.	Mr. Arsalan Bashir	Data Processing Officer
4.	Mr. Muhammad Kibria	Data Processing Officer
5.	Mr. Muhammad Irfan Bajwa	Data Processing Assistant

Inflation in Brief

- CPI inflation General**, increased to 12.6% on year-on-year basis in June 2024 as compared to an increase of 11.8% in the previous month and 29.4% in June 2023. On month-on-month basis, it increased to 0.5% in June 2024 as compared to a decrease of 3.2% in the previous month and decrease of 0.3% in June 2023.
- CPI inflation Urban**, increased to 14.9% on year-on-year basis in June 2024 as compared to an increase of 14.3% in the previous month and 27.3% in June 2023. On month-on-month basis, it increased to 0.6% in June 2024 as compared to a decrease of 2.8% in the previous month and an increase of 0.1% in June 2023.
- CPI inflation Rural**, increased to 9.3% on year-on-year basis in June 2024 as compared to an increase of 8.2% in the previous month and 32.4% in June 2023. On month-on-month basis, it increased to 0.3% in June 2024 as compared to a decrease of 3.9% in the previous month and decrease of 0.8% in June 2023.
- SPI inflation** on YoY increased to 16.6% in June 2024 as compared to an increase of 15.3% a month earlier and 34.9% in June 2023. On MoM basis, it increased by 1.33% in June 2024 as compared to a decrease of 4.0% a month earlier and an increase of 0.2% in June 2023.
- WPI inflation** on YoY basis increased to 10.6% in June 2024 as compared to an increase of 9.9% a month earlier and an increase of 22.4% in June 2023. On MoM basis, it increased by 0.4% in June 2024 as compare to a decrease of 2.5% in the previous month and decrease of 0.3% in corresponding month of last year i.e. June 2023.
- Figures 1 and 2 show graphically the yearly data of Table 1.a for Urban and Rural CPI while Table 1.1 shows "Period Average" and "YoY" percentage changes in indices of three years.

Table 1.a General Inflation (%) (Base 2015-16)																		
PERIOD	CPI														SPI**		WPI	
	General						Food				Non-Food							
	National		Urban		Rural		Urban		Rural		Urban		Rural		YoY	MoM	YoY	MoM
	YoY	MoM	YoY	MoM	YoY	MoM	YoY	MoM	YoY	MoM	YoY	MoM	YoY	MoM				
Sep-22	23.2	-1.2	21.2	-2.1	26.1	0.2	30.8	5.2	32.7	5.7	15.2	-6.6	20.1	-4.9	28.6	-1.4	38.9	1.4
Oct-22	26.6	4.7	24.6	4.5	29.5	5.0	34.7	4.5	37.2	6.1	18.2	4.5	22.4	3.9	24.0	-1.5	32.6	-0.5
Nov-22	23.8	0.8	21.6	0.4	27.2	1.3	29.7	0.0	33.5	0.5	16.4	0.6	21.4	2.1	27.1	6.1	27.7	0.0
Dec-22	24.5	0.5	21.6	0.3	28.8	0.7	32.7	0.0	37.9	0.1	14.8	0.6	20.7	1.4	27.8	0.2	27.1	-0.7
Jan-23	27.6	2.9	24.4	2.4	32.3	3.6	39.0	3.9	45.2	5.7	15.6	1.2	20.9	1.5	30.5	1.3	28.5	1.8
Feb-23	31.5	4.3	28.8	4.5	35.6	4.0	41.9	4.3	47.0	3.9	20.8	4.7	25.3	4.1	33.6	3.7	36.4	8.2
Mar-23	35.4	3.7	33.0	3.9	38.9	3.5	47.1	5.6	50.2	4.5	24.1	2.7	28.5	2.4	40.4	5.8	37.5	4.7
Apr-23	36.4	2.4	33.5	2.0	40.7	3.0	46.8	3.4	52.2	4.2	24.9	1.0	29.9	1.6	42.1	2.7	33.4	0.1
May-23	38.0	1.6	35.1	1.5	42.2	1.7	48.1	1.9	52.4	1.4	26.6	1.2	32.5	2.0	43.0	1.3	32.8	1.0
Jun-23	29.4	-0.3	27.3	0.1	32.4	-0.8	40.8	0.1	41.5	-1.6	18.7	0.1	23.8	0.1	34.9	0.2	22.4	-0.3
Jul-23	28.3	3.5	26.3	3.6	31.3	3.3	40.2	3.7	41.3	3.5	17.3	3.5	22.0	3.0	29.3	2.8	23.1	2.5
Aug-23	27.4	1.7	25.0	1.6	30.9	1.9	38.8	0.6	40.6	0.8	16.3	2.4	22.0	3.1	27.9	4.1	24.3	4.2
Sep-23	31.4	2.0	29.7	1.7	33.9	2.5	33.9	1.5	35.4	1.8	26.8	1.8	32.3	3.2	32.0	1.7	26.4	3.1
Oct-23	26.8	1.0	25.5	1.1	28.7	0.9	28.9	0.6	28.6	0.7	23.1	1.4	28.8	1.1	34.2	0.2	24.6	-1.9
Nov-23	29.2	2.7	30.4	4.3	27.5	0.4	29.8	0.8	29.2	1.0	30.9	7.0	25.9	-0.2	30.6	3.3	26.4	1.4
Dec-23	29.7	0.8	30.9	0.7	27.9	1.0	28.8	-0.7	29.3	0.1	32.4	1.8	26.4	1.8	35.3	3.8	27.3	0.0
Jan-24	28.3	1.8	30.2	1.8	25.7	1.9	27.4	2.8	25.1	2.3	32.3	1.1	26.3	1.4	36.2	2.0	27.0	1.5
Feb-24	23.1	0.0	24.9	0.2	20.5	-0.3	20.2	-1.5	19.0	-1.1	28.2	1.5	22.1	0.6	30.4	-0.8	18.7	1.1
Mar-24	20.7	1.7	21.9	1.4	19.0	2.1	16.6	2.4	17.1	2.8	25.8	0.7	21.0	1.4	25.9	2.1	14.8	1.3
Apr-24	17.3	-0.4	19.4	-0.1	14.5	-0.9	11.3	-1.3	9.5	-2.6	25.6	0.8	20.0	0.8	21.6	-0.7	13.9	-0.7
May-24	11.8	-3.2	14.3	-2.8	8.2	-3.9	2.2	-6.3	-0.1	-7.4	23.6	-0.4	17.2	-0.4	15.3	-4.0	9.9	-2.5
Jun-24	12.6	0.5	14.9	0.6	9.3	0.3	2.6	0.4	1.3	-0.2	24.3	0.7	17.9	0.8	16.6	1.3	10.6	0.4

** SPI for quintile 1. Digits 0.0* are due to rounding off.

Core inflation (NFNE)

7. Measured by **non-food non-energy Urban** increased to 12.2% on (YoY) basis in June 2024 as compared to an increase of 12.3% in the previous month and 18.5% in June 2023. On (MoM) basis, it increased by 0.6% in June 2024 as compared to an increase of 0.4% in previous month and an increase of 0.7% in corresponding month of last year i.e. June, 2023.
8. Measured by **non-food non-energy Rural** increased to 17.0% on (YoY) basis in June 2024 as compared to an increase of 17.0% in the previous month and 25.2% in June 2023. On (MoM) basis, it increased by 0.9% in June 2024 as compared to an increase of 0.5% in previous month and an increase of 0.9% in corresponding month of last year i.e. June 2023.

Core inflation (Trimmed)

9. Measured by 20% **weighted trimmed mean Urban** increased to 10.3% on (YoY) basis in June 2024 as compared to 11.0% in the previous month and 22.9% in June 2023. On (MoM) basis, it increased to 0.6% in June 2024 as compared to a decrease of 0.5% in the previous month and an increase of 0.8% in corresponding month of last year i.e. June 2023.
10. Measured by 20% **weighted trimmed mean Rural** increased to 11.0% on (YoY) basis in June 2024 as compared to 10.6% in the previous month and 29.9% in June 2023. On (MoM) basis, it increased to 0.5% in June 2024 as compared to a decrease of 0.9% in the previous month and an increase of 0.1% in corresponding month of last year i.e. June 2023.

Table 1.b Core Inflation (%) (Base 2015-16)

Period	NFNE				Trimmed			
	Urban		Rural		Urban		Rural	
	YoY	MoM	YoY	MoM	YoY	MoM	YoY	MoM
Jun-23	18.5	0.7	25.2	0.9	22.9	0.8	29.9	0.1
Jul-23	18.4	1.2	24.6	1.2	21.7	1.9	28.7	2.4
Aug-23	18.4	1.8	25.9	2.8	23.0	1.5	30.5	1.4
Sep-23	18.6	1.0	27.3	2.6	25.0	1.1	33.3	1.7
Oct-23	18.5	1.2	26.7	1.0	24.6	0.6	30.4	0.7
Nov-23	18.6	0.9	25.9	1.4	22.9	0.1	27.9	0.5
Dec-23	18.2	0.8	25.1	0.9	23.3	0.3	28.0	0.7
Jan-24	17.8	1.1	24.6	1.2	22.1	1.0	25.8	1.2
Feb-24	15.5	0.3	21.9	0.4	16.0	0.3	21.3	0.4
Mar-24	12.8	0.1	20.0	0.8	14.8	0.6	18.4	0.9
Apr-24	13.1	2.1	19.3	2.0	13.4	0.5	15.0	0.6
May-24	12.3	0.4	17.0	0.5	11.0	-0.5	10.6	-0.9
June-24	12.2	0.6	17.0	0.9	10.3	0.6	11.0	0.5

Table 1.1 Period Average and Y-o-Y % Change

INDEX	Average July - June % Changes			June over June % Changes		
	2023-2024	2022-2023	2021-2022	2023-2024	2022-2023	2021-2022
CPI (National)	23.41	29.18	12.15	12.57	29.40	21.32
CPI (Urban)	24.12	26.85	11.82	14.89	27.34	19.84
CPI (Rural)	22.41	32.63	12.65	9.31	32.41	23.55
SPI	27.52	33.00	17.10	16.44	34.92	21.65
WPI	20.16	32.80	24.91	10.62	22.44	38.94

Figure 1: Urban Inflation - YoY, Special Indices

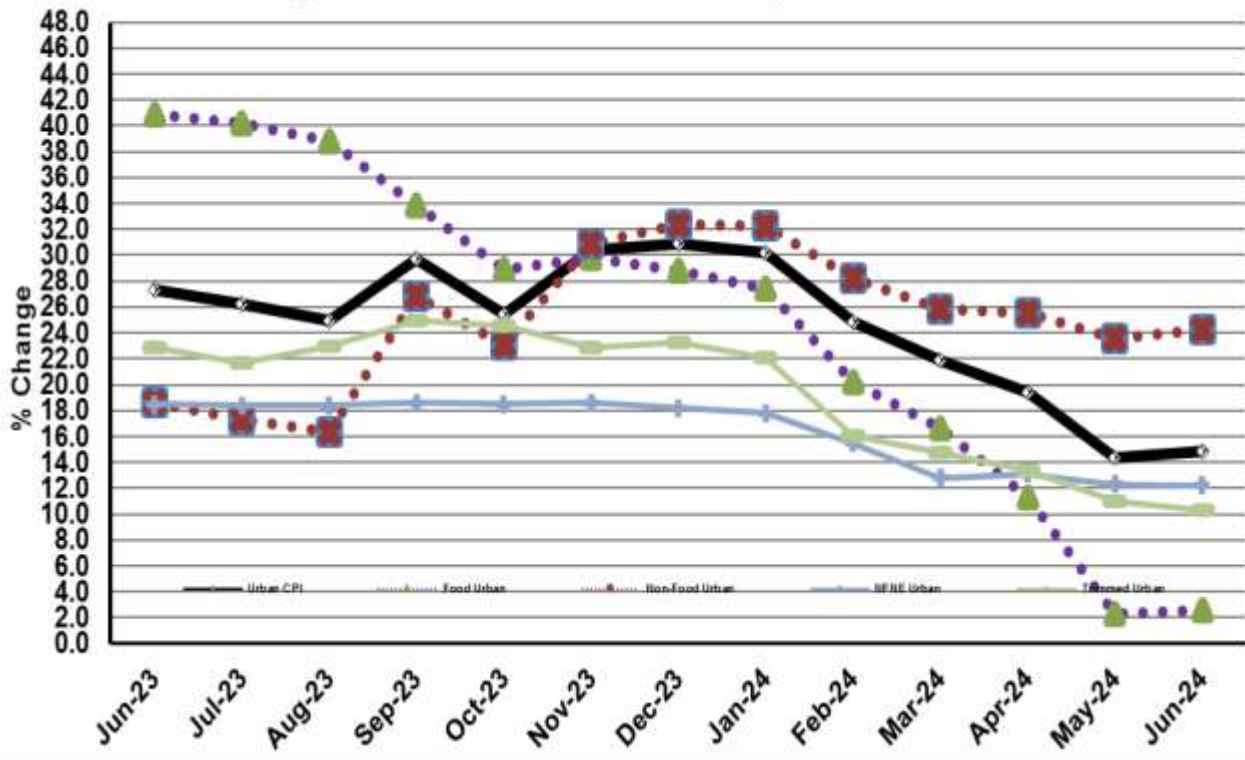


Figure 2: Rural Inflation - YoY, Special Indices

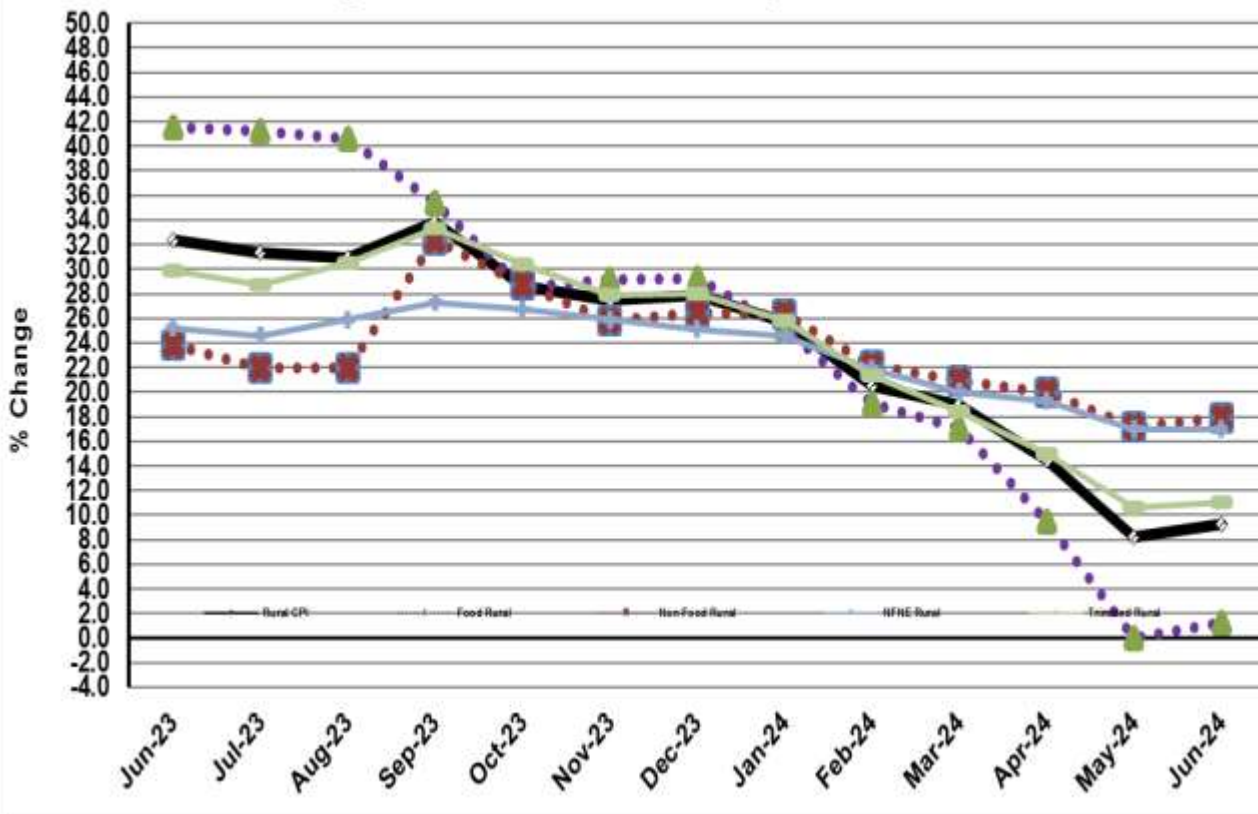


Figure 3: Urban Inflation - MoM, Special Indices

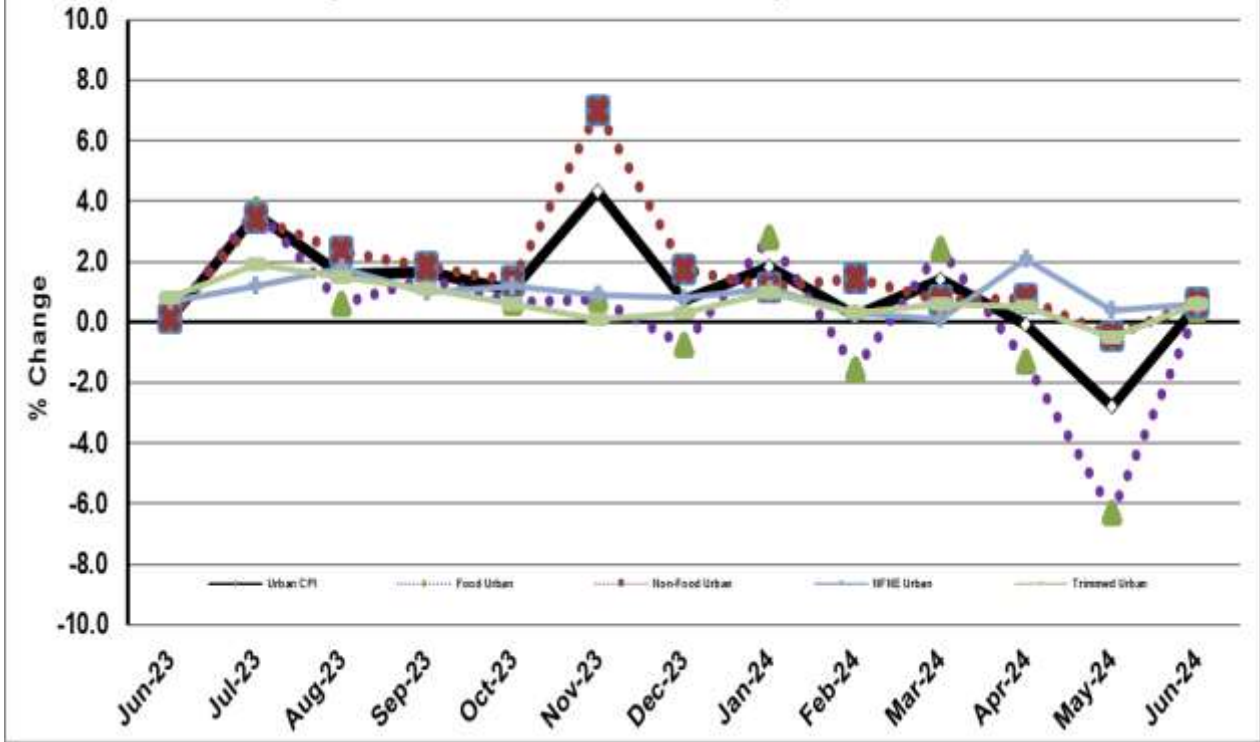


Figure 4: Rural Inflation - MoM, Special Indices

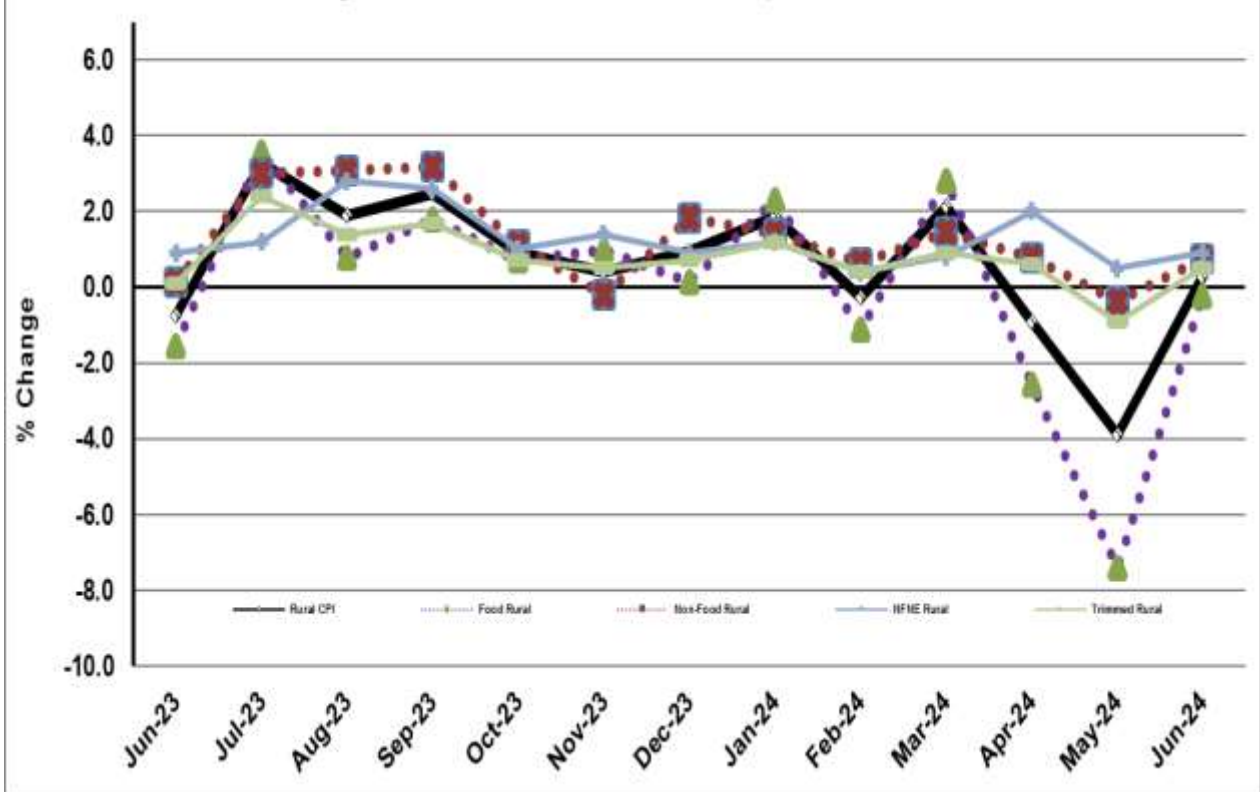


Figure 5: CPI YoY (National, Urban, Rural)

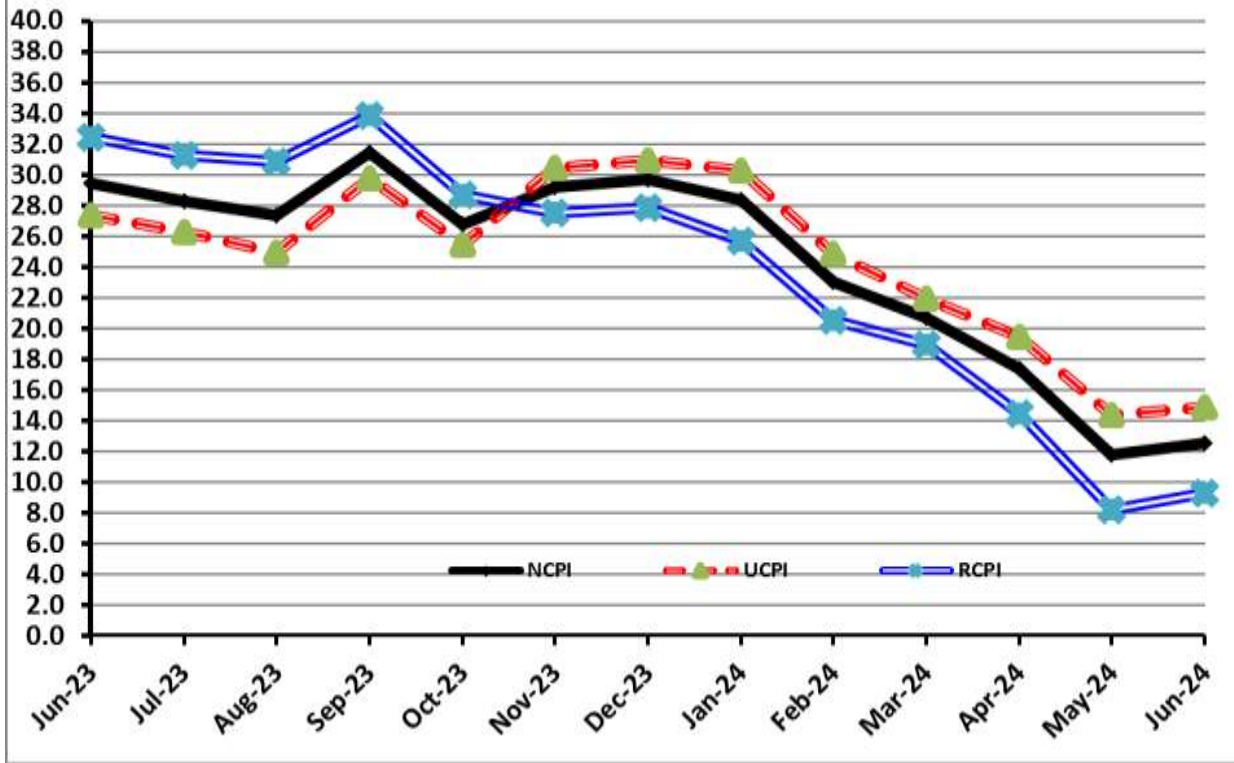
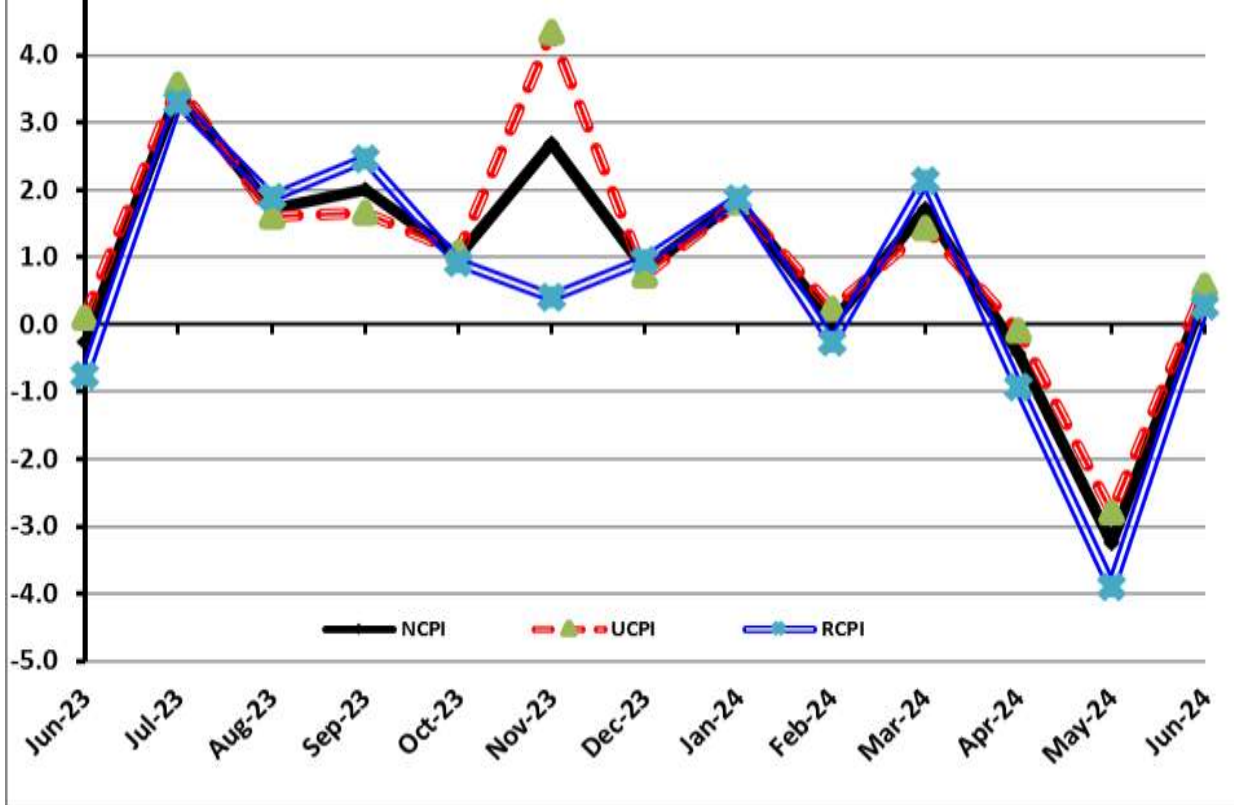


Figure 6: CPI MoM (National, Urban, Rural)



I. National Consumer Price Index (N-CPI)

The **National Consumer Price Index** for **June 2024** is increased to **0.46%** over **May 2024** and increased to **12.57%** over corresponding month of the last year i.e. **June 2023**.

Table 1: Consumer Price Index (National) by Group of Commodities and Services (Base 2015-16)

No	Group	Group Weight (%)	Indices			% Change June 2024 Over		Impact (In % points) June 2024 Over							
			June 24	May 24	June 23	May 24	June 23	May 24	June 23						
										General	100.00	255.94	254.78	227.37	0.46
1.	Food & Non-alcoholic Bev.	34.58	264.33	264.01	261.78	0.12	0.97	0.04	0.39						
	<i>Non-perishable Food Items</i>	29.60	263.94	266.43	268.68	-0.94	-1.76	-0.29	-0.62						
	<i>Perishable Food Items</i>	4.99	266.62	249.59	220.81	6.83	20.75	0.33	1.00						
2.	Alcoholic Bev. & Tobacco	1.02	377.47	366.68	356.77	2.94	5.80	0.04	0.09						
3.	Clothing & Footwear	8.60	241.68	239.46	205.16	0.92	17.80	0.07	1.38						
4.	Housing, Water, Electricity, Gas & Fuels	23.63	240.15	236.63	177.51	1.49	35.29	0.33	6.51						
5.	Furnishing & Household Equipment Maintenance	4.10	268.30	267.41	238.81	0.33	12.35	0.01	0.53						
6.	Health	2.79	244.56	241.17	204.10	1.41	19.83	0.04	0.50						
7.	Transport	5.91	308.23	315.06	279.24	-2.17	10.38	-0.16	0.75						
8.	Communication	2.21	134.52	134.27	118.33	0.19	13.69	0.00	0.16						
9.	Recreation & Culture	1.59	269.00	262.27	244.60	2.57	9.98	0.04	0.17						
10.	Education	3.79	199.58	199.00	172.26	0.29	15.86	0.01	0.45						
11.	Restaurants & Hotels	6.92	266.53	267.22	238.22	-0.26	11.88	-0.02	0.86						
12.	Miscellaneous	4.87	284.93	282.79	249.12	0.76	14.38	0.04	0.77						

II. Urban Consumer Price Index (UCPI)

The Urban Consumer Price Index for **June 2024** is increased to **0.58%** over **May 2024** and increased to **14.89%** over corresponding month of the last year i.e. **June 2023**.

Table 2: Consumer Price Index (Urban) by Group of Commodities and Services (Base 2015-16)

No	Group	Group Weight (%)	Indices			% Change June 2024 Over		Impact (In % points) June 2024 Over	
			June 24	May 24	June 23	May 24	June 23	May 24	June 23
	General	100.00	253.44	251.99	220.59	0.58	14.89	0.58	14.89
1.	Food & Non-alcoholic Bev.	30.42	262.18	260.78	257.65	0.54	1.76	0.17	0.62
	<i>Non-perishable Food Items</i>	25.97	262.39	263.49	263.77	-0.42	-0.52	-0.11	-0.16
	<i>Perishable Food Items</i>	4.46	260.92	244.93	221.95	6.53	17.56	0.28	0.79
2.	Alcoholic Bev. & Tobacco	0.85	401.92	387.13	377.89	3.82	6.36	0.05	0.09
3.	Clothing & Footwear	8.01	233.53	231.28	199.16	0.97	17.26	0.07	1.25
4.	Housing, Water, Electricity, Gas & Fuels	27.03	246.77	243.36	172.95	1.40	42.68	0.37	9.05
5.	Furnishing & Household Equip. & Maintenance	4.09	258.39	257.55	233.01	0.33	10.89	0.01	0.47
6.	Health	2.31	247.37	243.20	203.22	1.71	21.73	0.04	0.46
7.	Transport	6.14	303.14	309.36	279.52	-2.01	8.45	-0.15	0.66
8.	Communication	2.35	138.28	137.91	123.07	0.27	12.36	0.00	0.16
9.	Recreation & Culture	1.73	255.02	251.25	235.57	1.50	8.26	0.03	0.15
10.	Education	4.88	194.55	194.43	171.65	0.06	13.34	0.00	0.51
11.	Restaurants & Hotels	7.41	263.73	265.20	240.11	-0.55	9.84	-0.04	0.79
12.	Miscellaneous	4.77	277.61	276.03	246.46	0.57	12.64	0.03	0.67

Main contributors to month-on-month and year-on-year percentage changes are given below and detail is given in **Annexure-A**.

1. MONTH-ON-MONTH Top few commodities which varied from previous month are given below:

FOOD

Increased: Tomatoes (38.96%), Onions (20.73%), Pulse Gram (10.16%), Chicken (8.32%), Potatoes (6.68%), Besan (6.41%), Butter (6.26%), Fresh Fruits (4.63%), Cigarettes (4.55%), Pulse Mash (3.23%), Gram Whole (2.94%), Condiments and Spices (2.50%), Milk Products (2.48%), Milk Fresh (1.80%), Beans (1.63%), Gur (0.92%), Meat (0.81%), Fish (0.57%), Pulse Moong (0.53%), Dry Fruits (0.24%), Milk Powder (0.19%), Pan Prepared (0.18%), Ice Cream (0.13%), Honey (0.05%) and Dessert Preparation (0.02%).

Decreased: Wheat Flour (8.93%), Wheat (7.92%), Wheat Products (7.75%), Eggs (5.12%), Rice (4.15%), Bakery and Confectionary (2.53%), Pulse Masoor (2.29%), Fresh Vegetables (2.13%), Mustard Oil (0.82%), Readymade Food (0.81%), Nimco (0.67%), Sugar (0.41%), Beverages (0.17%), Cooking Oil (0.05%) and Vegetable Ghee (0.05%).

NON-FOOD:

Increased: Electricity Charges (8.10%), Tailoring (4.59%), Transport Services (4.36%), Text Books (2.74%), Drugs and Medicines (2.16%), Hospitals Services (1.95%), Personal Effects (1.48%), Hosiry (1.46%), Medical Tests (1.43%), Garbage Collection (1.05%) and Communication Apparatus (0.99%).

Decreased: Liquefied Hydrocarbons (10.82%), Motor Fuel (5.44%) and Solid Fuel (0.39%).

YEAR-ON-YEAR: Top few commodities which varied from corresponding month of previous year i.e. June, 2023 are given below:

FOOD

Increased: Onions (98.40%), Tomatoes (68.35%), Condiments and Spices (42.11%), Fresh Vegetables (38.08%), Fish (30.38%), Beans (28.68%), Pulse Mash (24.32%), Dry Fruits (21.99%), Meat (19.67%), Beverages (19.38%), Pulse Gram (17.54%), Milk Powder (17.54%), Sugar (15.49%), Pulse Masoor (14.14%) and Sweetmeat (14.02%).

Decreased: Wheat (30.61%), Wheat Flour (29.06%), Chicken (21.16%), Cooking Oil (16.47%), Vegetable Ghee (14.25%), Fresh Fruits (13.24%), Mustard Oil (11.91%), Wheat Products (4.78%), Rice (2.46%) and Tea (1.86%).

NON-FOOD:

Increased: Gas Charges (318.74%), Electricity Charges (66.81%), Transport Services (35.32%), Dental Services (31.39%), Woolen Readymade Garments (23.44%), Cotton Cloth (23.36%), Marriage Hall Charges (22.20%), Doctor (MBBS) Clinic Fee (20.66%), Footwear (19.71%) and Hospitals Services (19.24%).

Decreased: Liquefied Hydrocarbons (3.53%).

III. Rural Consumer Price Index (RCPI)

The Rural Consumer Price Index for June 2024 is increased to 0.28% over May 2024 and increased to 9.31% over corresponding month of the last year i.e. June 2023.

Table 3: Consumer Price Index (Rural) by Group of Commodities and Services (Base 2015-16)

No	Group	Group Weight (%)	Indices			% Change June 2024 Over		Impact (In % points) June 2024 Over	
			June 24	May 24	June 23	May 24	June 23	May 24	June 23
	General	100.00	259.72	258.99	237.61	0.28	9.31	0.28	9.31
1.	Food & Non-alcoholic Bev.	40.87	266.75	267.64	266.42	-0.33	0.12	-0.14	0.06
	<i>Non-perishable Food Items</i>	<i>35.08</i>	<i>265.67</i>	<i>269.72</i>	<i>274.16</i>	<i>-1.50</i>	<i>-3.10</i>	<i>-0.55</i>	<i>-1.25</i>
	<i>Perishable Food Items</i>	<i>5.79</i>	<i>273.25</i>	<i>255.00</i>	<i>219.49</i>	<i>7.16</i>	<i>24.49</i>	<i>0.41</i>	<i>1.31</i>
2.	Alcoholic Bev. & Tobacco	1.28	352.81	346.06	335.47	1.95	5.17	0.03	0.09
3.	Clothing & Footwear	9.48	252.06	249.90	212.80	0.86	18.45	0.08	1.57
4.	Housing, Water, Electricity, Gas & Fuels	18.49	225.54	221.78	187.58	1.70	20.24	0.27	2.95
5.	Furnishing & Household Equip. & Maintenance	4.10	283.21	282.26	247.55	0.34	14.41	0.01	0.62
6.	Health	3.51	241.78	239.15	204.97	1.10	17.96	0.04	0.54
7.	Transport	5.56	316.71	324.55	278.77	-2.42	13.61	-0.17	0.89
8.	Communication	1.99	127.84	127.80	109.88	0.03	16.35	0.00	0.15
9.	Recreation & Culture	1.38	295.53	283.17	261.73	4.36	12.91	0.07	0.20
10.	Education	2.13	216.95	214.78	174.37	1.01	24.42	0.02	0.38
11.	Restaurants & Hotels	6.19	271.58	270.88	234.81	0.26	15.66	0.02	0.96
12.	Miscellaneous	5.02	295.45	292.50	252.93	1.01	16.81	0.06	0.90

Main contributors to Month-on-Month and Year-on-Year percentage changes are given below and detail is given in **Annexure-B**.

1. MONTH-ON-MONTH Top few commodities which varied from previous month are given below:

FOOD

Increased: Tomatoes (25.01%), Onions (20.67%), Chicken (12.22%), Pulse Gram (9.45%), Potatoes (6.16%), Besan (5.13%), Pulse Mash (2.94%), Fresh Vegetables (2.86%), Pan Prepared (2.18%), Fresh Fruits (2.04%), Meat (1.96%), Cigarettes (1.94%), Gur (1.80%), Butter (1.67%), Milk Fresh (1.34%), Milk Powder (0.97%), Gram Whole (0.82%), Pulse Moong (0.78%), Dry Fruits (0.76%), Condiments and Spices (0.74%).

Decreased: Wheat (12.59%), Wheat Flour (9.61%), Wheat Products (5.99%), Eggs (4.42%), Rice (4.30%), Mustard Oil (2.54%), Bakery and Confectionary (2.19%), Cooking Oil (0.93%), Pulse Masoor (0.31%), Beans (0.17%), Sugar (0.16%), Vegetable Ghee (0.13%) and Readymade Food (0.09%).

NON-FOOD

Increased: Electricity Charges (8.10%), Text Books (7.98%), Recreation and Culture (2.46%), Construction Input Items (2.19%), Transport Services (2.04%), Hosiry (2.00%), Cotton Cloth (1.61%), Drugs and Medicines (1.59%), Appliances/Articles/Products for Personal Care (1.18%) and Education (1.01%).

Decreased: Motor Fuels (5.84%), Liquified Hydrocarbons (2.90%), Solid Fuel (0.64%), Motor Vehicles Accessories (0.31%) and Washing Soaps, Detergents & Match Box (0.14%) each.

YEAR-ON-YEAR: Top few commodities which varied from corresponding month of previous year i.e. June, 2023 are given below:

FOOD

Increased: Onions (115.27%), Tomatoes (58.36%), Fresh Vegetables (42.95%), Beans (35.49%), Butter (24.81%), Fish (22.90%), Beverages (20.45%), Meat (20.43%), Pulse Mash (20.06%), Dry Fruits (17.77%), Sweetmeat (17.28%), Sugar (16.79%), Pan Prepared (16.77%), Nimco (16.50%), Pulse Gram (15.35%), Milk Products (14.94%), Milk Powder (14.73%), Pulse Masoor (14.70%) and Potatoes (14.68%).

Decreased: Wheat (29.98%), Wheat Flour (27.75%), Chicken (20.43%), Cooking Oil (16.00%), Vegetable Ghee (13.35%), Fresh Fruits (11.63%), Mustard Oil (7.91%), Wheat Products (2.81%), Eggs (1.17%), Gram Whole (0.83%) and Rice (0.49%).

NON-FOOD

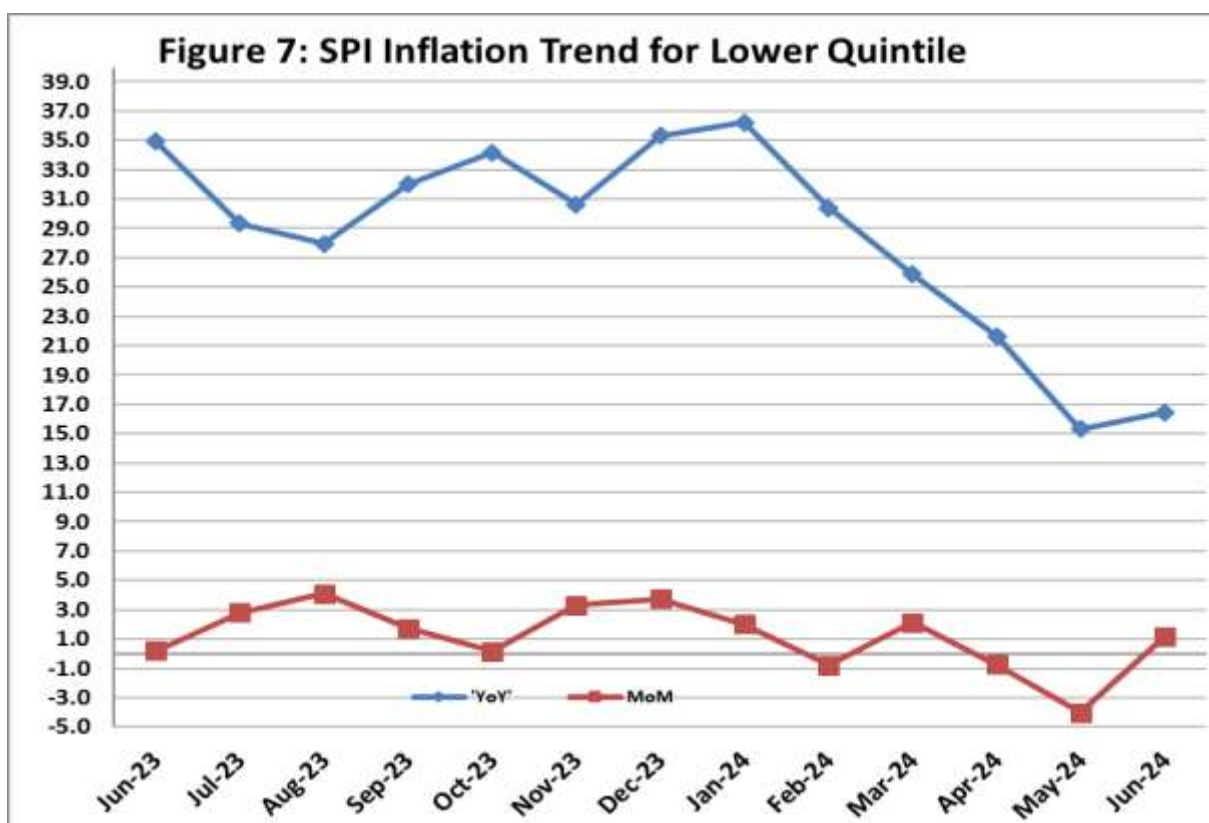
Increased: Electricity Charges (66.81%), Transport Services (48.48%), Woolen Readymade Garments (38.42%), Water Supply (31.65%), Education (24.42%) and Marriage Hall Charges (23.75%).

IV. Sensitive Price Indicator

Quintile-wise percentage changes YoY and MoM are given below in Table 4. The series from June 2023 to June 2024 is also graphed below in Figure 7.

Table 4: Sensitive Price Indicator (Base 2015-16)					
Quintiles	Indices			% Change June 2024 Over	
	June 2024	May 2024	June 2023	May 2024	June 2023
1	305.10	301.10	261.60	1.33	16.63
2	303.94	299.83	252.46	1.37	20.39
3	324.25	321.05	256.75	1.00	26.29
4	312.19	309.52	252.54	0.86	23.62
5	312.79	310.89	259.26	0.61	20.65
Combined	313.63	310.91	254.94	0.87	23.02

Table 4.1: Weekly Percentage Change of SPI During June 2024				
Quintiles	% Change with Previous week			
	06-06-2024	13-06-2024	20-06-2024	27-06-2024
Quintile 1	0.81	1.01	1.58	-0.80
Combined	0.45	1.3	0.94	-0.73



V. Wholesale Price Index

The Wholesale Price Index for **June, 2024** increased to **0.37%** over **May, 2024**. It increased to **10.62%** over the corresponding month of the last year i.e. **June, 2023**. YoY and MoM movements, from June, 2023 to June, 2024 are also graphed below in Figure 8.

Table 5: Wholesale Price Index by Group of Commodities (Base 2015-16)

No	Group	Group Weight (%)	Indices			% Change June 2024 Over		Impact (In % points) June 2024 Over	
			June 24	May 24	June 23	May 24	June 23	May 24	June 23
	General	100.00	308.85	307.70	279.21	0.37	10.62	0.37	10.62
1	Agriculture Forestry & Fishery	25.77	280.57	277.02	276.75	1.28	1.38	0.30	0.35
2	Ores/Minerals, Elec., Gas & Water	12.01	373.04	364.31	233.26	2.40	59.92	0.34	6.01
3	Food, Beverages, Tobacco, Textiles & Leather Products	31.11	260.25	260.62	251.67	-0.14	3.41	-0.04	0.96
	i. Food Products, Beverages & Tobacco	20.07	270.49	271.11	265.83	-0.23	1.75	-0.04	0.34
	ii. Textiles & Apparels	10.33	245.38	245.31	229.23	0.03	7.05	0.00	0.60
	iii. Leather Products	0.71	186.88	186.88	177.88	0.00	5.06	0.00	0.02
4	Other Transportable Goods	22.40	344.62	350.63	316.60	-1.71	8.85	-0.44	2.25
5	Metal Product, Machinery & Equipment	8.72	385.61	378.16	351.99	1.97	9.55	0.21	1.05

Main contributors to month-on-month and year-on-year percentage changes are given below and detail is given in **Annexure-C**.

1. **MONTH-ON-MONTH:** Top few commodities which varied from previous month are given below:

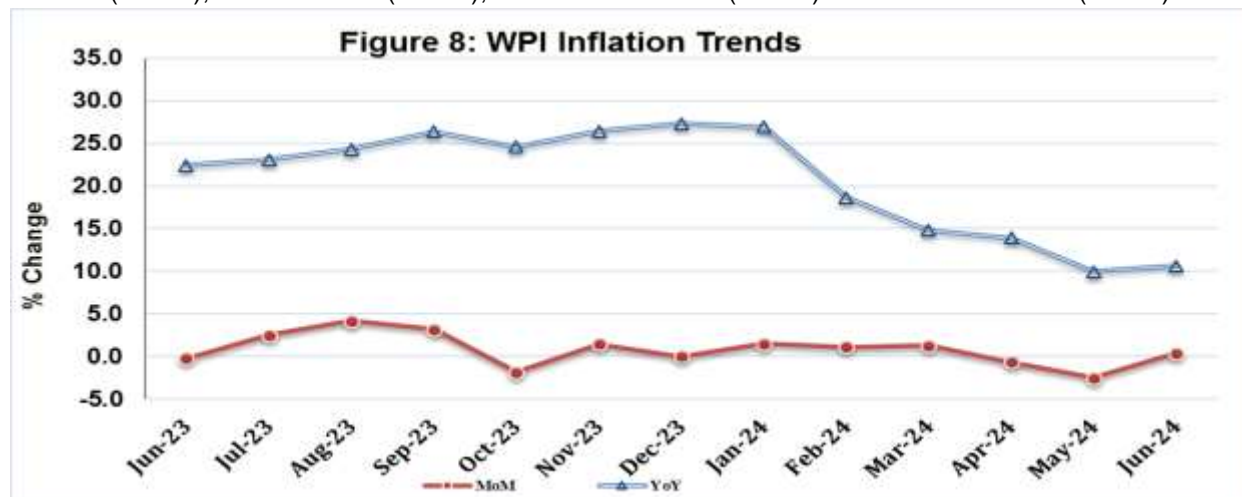
Increased: Vegetables (20.28%), Edible Roots / Potatoes (13.57%), Poultry (9.06%), Dyeing Material (8.24%), Tobacco Products (8.07%), Other Cereal Flour (7.03%), Electric Wires (6.00%), Electrical Energy (5.93%), Raw Milk from Bovine Animals (5.15%), Stimulant & Spice Crops (4.80%), Dry Fruits (4.56%), Salt & Pure Sodium Chloride (4.05%), Pulses (3.43%), Fresh Fruits (3.39%) and Steel Bar & Sheets (3.38%).

Decreased: Wheat Flour (9.22%), Wheat (8.44%), Motor Spirit (6.54%), Eggs (5.24%), Diesel Oil (4.23%), Kerosene Oil (3.75%), Fertilizers (3.27%), Mineral Water (2.96%), Rice (2.89%), Cultivators (2.84%), Fibre Crops (2.72%), Spices (1.89%), Sugar Crops (1.69%), Millet / Bajra (1.66%), Maize (1.36%), Other Oil Seeds (1.12%), Chemicals (0.66%), Sorghum / Jowar (0.26%), Natural Gas Liquefied (0.18%), Vegetable Oils Refined (0.18%), Bed Foam (0.18%), Sugar Refined (0.06%), Dairy Products (0.04%) and Vegetable Ghee (0.02%).

YEAR-ON-YEAR: Top few commodities which varied from previous year are given below:

Increased: Natural Gas Liquefied (73.28%), Concrete Mixture (67.20%), Spices (58.85%), Engines & Motors (58.83%), Electrical Energy (51.66%), Vegetables (51.36%), Other Food Products (47.46%), Fertilizers (37.21%), Electric Wires (36.38%), Glass Sheets (26.70%), Cotton Fabrics (26.04%), Cultivators (24.50%), Dairy Products (23.16%), Medicines (21.70%) and Meat of Animals(20.06%).

Decreased: Wheat (32.19%), Wheat Flour (28.86%), Poultry (23.70%), Other Oil Seeds (18.97%), Printing Paper (17.22%), Maize (17.07%), Millet / Bajra (16.77%), Chemicals (16.16%), Fresh Fruits (15.53%), Vegetable Ghee (12.28%), Stimulant & Spice Crops (10.62%), Sorghum / Jowar (10.60%), Vegetable Oils Refined (8.96%), Cotton Seeds (8.26%), Steel Bar & Sheets (2.10%) and Air Conditioners (0.64%).



Annexure A:CPI (Urban) Index Numbers by Commodity Groups & Commodities (2015-16=100)

Item and Specification	Weight	Index Numbers			% Change in Jun 2024 over			
		Jun 24	May 24	Jun 23	May 2024		Jun 2023	
General	100.0000	253.44	251.99	220.59	+	0.58	+	14.89
Food and non-alcoholic Beverages	30.4215	262.18	260.78	257.65	+	0.54	+	1.76
01 Wheat	0.6120	229.07	248.76	330.12	-	7.92	-	30.61
02 Wheat flour	3.0075	231.16	253.82	325.87	-	8.93	-	29.06
03 Wheat products	0.0936	286.91	311.01	301.30	-	7.75	-	4.78
04 Besan	0.0830	229.97	216.12	208.08	+	6.41	+	10.52
05 Rice	1.1804	308.60	321.96	316.38	-	4.15	-	2.46
06 Bakery and confectionary	0.4770	262.89	269.70	249.35	-	2.53	+	5.43
07 Nimco	0.1224	285.08	287.01	258.41	-	0.67	+	10.32
08 Meat	2.0411	308.21	305.73	257.54	+	0.81	+	19.67
09 Chicken	1.3631	251.04	231.76	318.43	+	8.32	-	21.16
10 Fish	0.3855	194.26	193.16	149.00	+	0.57	+	30.38
11 Milk fresh	7.1070	242.46	238.18	225.78	+	1.80	+	7.39
12 Milk products	0.6407	251.67	245.58	228.78	+	2.48	+	10.01
13 Milk powder	0.3106	256.69	256.20	218.39	+	0.19	+	17.54
14 Eggs	0.5083	287.57	303.09	286.06	-	5.12	+	0.53
15 Butter	0.0932	374.05	352.02	330.23	+	6.26	+	13.27
16 Mustard oil	0.0120	282.30	284.62	320.45	-	0.82	-	11.91
17 Cooking oil	1.1016	301.35	301.49	360.75	-	0.05	-	16.47
18 Vegetable ghee	1.0324	305.30	305.45	356.05	-	0.05	-	14.25
19 Dry fruits	0.3299	279.90	279.24	229.44	+	0.24	+	21.99
20 Fresh fruits	1.4363	237.93	227.41	274.25	+	4.63	-	13.24
21 Pulse masoor	0.1624	217.53	222.63	190.59	-	2.29	+	14.14
22 Pulse moong	0.1697	188.78	187.79	168.24	+	0.53	+	12.21
23 Pulse mash	0.1152	242.69	235.09	195.21	+	3.23	+	24.32
24 Pulse gram	0.1660	234.99	213.32	199.93	+	10.16	+	17.54
25 Gram whole	0.0912	272.34	264.57	264.12	+	2.94	+	3.11
26 Beans	0.0408	369.74	363.80	287.33	+	1.63	+	28.68
27 Potatoes	0.4496	356.98	334.62	331.99	+	6.68	+	7.53
28 Onions	0.5928	295.59	244.84	148.99	+	20.73	+	<u>98.40</u>
29 Tomatoes	0.3459	223.12	160.56	132.53	+	38.96	+	<u>68.35</u>
30 Fresh vegetables	1.5306	236.14	241.27	171.02	-	2.13	+	38.08
31 Sugar	1.1130	229.96	230.91	199.12	-	0.41	+	15.49
32 Gur	0.0379	235.30	233.16	212.84	+	0.92	+	10.55
33 Honey	0.1017	183.14	183.04	172.59	+	0.05	+	6.11
34 Sweetmeat	0.3535	298.24	298.24	261.57	+	0.00	+	14.02
35 Ice cream	0.1044	198.73	198.48	196.37	+	0.13	+	1.20
36 Condiments and Spices	1.3340	319.33	311.54	224.70	+	2.50	+	42.11
37 Dessert preparation	0.0419	264.46	264.41	262.43	+	0.02	+	0.77
38 Tea	0.8427	332.73	332.73	339.05	+	0.00	-	1.86
39 Beverages	0.8906	244.98	245.40	205.21	-	0.17	+	19.38
Alcoholic Beverages, Tobacco	0.8540	401.92	387.13	377.89	+	3.82	+	6.36
40 Cigarettes	0.7167	402.22	384.73	382.88	+	4.55	+	5.05
41 Pan prepared	0.1373	400.36	399.64	351.80	+	0.18	+	13.80
Clothing and footwear	8.0096	233.53	231.28	199.16	+	0.97	+	17.26
42 Cotton cloth	2.2227	275.45	273.95	223.29	+	0.55	+	23.36
43 Woollen cloth	0.8361	224.68	224.02	194.69	+	0.29	+	15.40
44 Readymade garments	1.3196	202.20	200.77	183.66	+	0.71	+	10.09
45 Woollen readymade garments	0.4307	230.68	230.68	186.87	+	0.00	+	23.44
46 Tailoring	1.0741	226.76	216.81	203.12	+	4.59	+	11.64
47 Hosiery	0.4070	211.97	208.93	193.58	+	1.46	+	9.50
48 Dopatta	0.1713	187.61	185.79	167.18	+	0.98	+	12.22
49 Cleaning and laundering	0.0665	253.83	253.74	238.60	+	0.04	+	6.38
50 Footwear	1.4816	219.60	219.57	183.45	+	0.01	+	19.71
Housing, water, Elec., Gas and Other Fuels	27.0332	246.77	243.36	172.95	+	1.40	+	42.68
51 House rent	19.2558	162.50	162.50	153.59	+	0.00	+	5.80
52 Construction input items	0.3765	259.33	257.56	247.65	+	0.69	+	4.72
53 Construction wage rates	0.2025	214.40	213.78	203.67	+	0.29	+	5.27
54 Water supply	0.5269	199.40	199.40	175.39	+	0.00	+	13.69
55 Garbage collection	0.1064	249.68	247.08	209.67	+	1.05	+	19.08
56 Electricity charges	4.5562	317.36	293.57	190.25	+	8.10	+	<u>66.81</u>
57 Gas charges	1.0807	1479.08	1479.08	353.22	+	0.00	+	<u>318.74</u>
58 Liquefied Hydrocarbons	0.5064	275.54	308.96	285.62	-	10.82	-	3.53

Annexure A:CPI (Urban) Index Numbers by Commodity Groups & Commodities (2015-16=100)

Item and Specification	Weight	Index Numbers			% Change in Jun 2024 over	
		Jun 24	May 24	Jun 23	May 2024	Jun 2023
59 Solid Fuel	0.4218	202.07	202.86	179.02	- 0.39	+ 12.88
<i>Furnishing and household equipments</i>	4.0937	258.39	257.55	233.01	+ 0.33	+ 10.89
60 Furniture and furnishing	0.4750	245.76	244.56	207.75	+ 0.49	+ 18.30
61 Carpets	0.0308	148.42	148.38	143.94	+ 0.03	+ 3.11
62 Household textiles	0.3420	184.36	183.60	168.30	+ 0.41	+ 9.54
63 Household equipments	1.0032	253.69	253.08	237.30	+ 0.24	+ 6.91
64 Plastic products	0.0536	206.97	206.97	188.52	+ 0.00	+ 9.79
65 Major tools & equipments	0.0084	225.82	224.12	208.84	+ 0.76	+ 8.13
66 Washing soap/detergents/match	1.4112	325.40	324.38	287.72	+ 0.31	+ 13.10
67 Household servant	0.7695	190.67	189.97	178.35	+ 0.37	+ 6.91
<i>Health</i>	2.3098	247.37	243.20	203.22	+ 1.71	+ 21.73
68 Drugs and medicines	1.0735	263.20	257.63	210.24	+ 2.16	+ 25.19
69 Therapeutic Appliances and Equipments	0.0054	148.33	147.70	132.81	+ 0.43	+ 11.69
70 Doctor (MBBS) clinic fee	0.4044	311.96	309.88	258.55	+ 0.67	+ 20.66
71 Dental services	0.0156	204.66	204.16	155.77	+ 0.24	+ 31.39
72 Medical tests	0.2367	191.91	189.21	173.33	+ 1.43	+ 10.72
73 Hospitals services	0.5742	197.24	193.46	165.42	+ 1.95	+ 19.24
<i>Transport</i>	6.1368	303.14	309.36	279.52	- 2.01	+ 8.45
74 Motor vehicles	0.8097	257.72	255.59	255.24	+ 0.83	+ 0.97
75 Motor vehicle accessories	0.1941	254.28	252.68	241.29	+ 0.63	+ 5.38
76 Motor fuel	2.9088	356.81	377.32	352.95	- 5.44	+ 1.09
77 Mechanical services	0.4290	221.38	221.08	201.53	+ 0.14	+ 9.85
78 Motor vehicle tax	0.0482	148.53	148.53	148.53	+ 0.00	+ 0.00
79 Transport services	1.7470	264.61	253.56	195.54	+ 4.36	+ 35.32
<i>Communication</i>	2.3536	138.28	137.91	123.07	+ 0.27	+ 12.36
80 Postal services	0.0190	209.03	207.37	196.15	+ 0.80	+ 6.57
81 Communication apparatus	0.4524	188.25	186.40	180.49	+ 0.99	+ 4.30
82 Communication Services	1.8822	125.55	125.55	108.53	+ 0.00	+ 15.68
<i>Recreation and culture</i>	1.7301	255.02	251.25	235.57	+ 1.50	+ 8.26
83 Recreation and culture	0.6478	151.58	150.82	145.01	+ 0.50	+ 4.53
84 Text books	0.6655	332.02	323.15	295.06	+ 2.74	+ 12.53
85 Newspapers	0.0716	211.87	211.87	209.69	+ 0.00	+ 1.04
86 stationery	0.3452	309.65	309.29	296.16	+ 0.12	+ 4.55
<i>Education</i>	4.8807	194.55	194.43	171.65	+ 0.06	+ 13.34
87 Education	4.8807	194.55	194.43	171.65	+ 0.06	+ 13.34
<i>Restaurants and hotels</i>	7.4050	263.73	265.20	240.11	- 0.55	+ 9.84
88 Readymade food	5.5235	268.22	270.40	251.60	- 0.81	+ 6.61
89 Marriage Hall Charges	1.7514	256.66	256.00	210.03	+ 0.26	+ 22.20
90 Accommodation Services	0.1301	168.29	168.29	157.13	+ 0.00	+ 7.10
<i>Misc. goods and services</i>	4.7720	277.61	276.03	246.46	+ 0.57	+ 12.64
91 Personal Grooming Services	0.8001	247.38	245.95	212.97	+ 0.58	+ 16.16
92 Electrical Appliances for Per	0.0465	161.93	161.79	154.50	+ 0.09	+ 4.81
93 Appliances/Articles/Products	2.9807	259.37	258.93	227.20	+ 0.17	+ 14.16
94 Personal Effects n.e.c.	0.9447	366.45	361.10	340.13	+ 1.48	+ 7.74

Annexure B:CPI (Rural) Index Numbers by Commodity Groups & Commodities (2015-16=100)

Item and Specification	Weight	Index Numbers			% Change in Jun 2024 over			
		Jun 24	May 24	Jun 23	May 2024	Jun 2023		
General	100.0000	259.72	258.99	237.61	+	0.28	+	9.31
Food and non-alcoholic Beverages	40.8668	266.75	267.64	266.42	-	0.33	+	0.12
01 Wheat	3.4736	226.56	259.19	323.57	-	12.59	-	29.98
02 Wheat Flour	3.4297	232.06	256.72	321.17	-	9.61	-	27.75
03 Wheat Products	0.1068	298.86	317.90	307.50	-	5.99	-	2.81
04 Besan	0.0728	235.19	223.71	226.19	+	5.13	+	3.98
05 Rice	1.5501	410.09	428.50	412.12	-	4.30	-	0.49
06 Bakery and Confectionary	0.3702	303.79	310.60	268.51	-	2.19	+	13.14
07 Nimco	0.0774	296.04	295.96	254.11	+	0.03	+	16.50
08 Meat	1.7146	311.30	305.31	258.50	+	1.96	+	20.43
09 Chicken	1.4641	263.67	234.95	331.35	+	12.22	-	20.43
10 Fish	0.2640	210.87	209.71	171.58	+	0.55	+	22.90
11 Milk fresh	10.3803	243.39	240.16	220.78	+	1.34	+	10.24
12 Milk products	0.9624	245.80	244.39	213.85	+	0.58	+	14.94
13 Milk powder	0.1062	224.73	222.58	195.87	+	0.97	+	14.73
14 Eggs	0.5665	275.80	288.56	279.07	-	4.42	-	1.17
15 Butter	0.3333	276.99	272.45	221.93	+	1.67	+	24.81
16 Mustard oil	0.0136	294.99	302.68	320.33	-	2.54	-	7.91
17 Cooking oil	0.6011	320.16	323.16	381.13	-	0.93	-	16.00
18 Vegetable ghee	2.3764	329.34	329.78	380.08	-	0.13	-	13.35
19 Dry fruits	0.2496	320.45	318.03	272.09	+	0.76	+	17.77
20 Fresh fruits	1.4505	259.72	254.53	293.89	+	2.04	-	11.63
21 Pulse Masoor	0.2076	233.70	234.42	203.75	-	0.31	+	14.70
22 Pulse Moong	0.2510	208.51	206.89	182.91	+	0.78	+	14.00
23 Pulse Mash	0.1465	244.04	237.08	203.27	+	2.94	+	20.06
24 Pulse Gram	0.2751	238.49	217.89	206.75	+	9.45	+	15.35
25 Gram Whole	0.1116	274.44	272.22	276.74	+	0.82	-	0.83
26 Beans	0.0896	398.02	398.69	293.76	-	0.17	+	35.49
27 Potatoes	0.7437	413.32	389.35	360.41	+	6.16	+	14.68
28 Onions	0.8965	292.72	242.57	135.98	+	20.67	+	<u>115.27</u>
29 Tomatoes	0.5069	187.56	150.03	118.44	+	25.01	+	<u>58.36</u>
30 Fresh Vegetables	2.0947	237.85	231.24	166.39	+	2.86	+	42.95
31 Sugar	2.0296	231.38	231.75	198.12	-	0.16	+	16.79
32 Gur	0.1522	243.05	238.75	212.85	+	1.80	+	14.19
33 Honey	0.0296	189.53	189.53	174.28	+	0.00	+	8.75
34 Sweetmeat	0.3967	280.72	279.40	239.35	+	0.47	+	17.28
35 Ice Cream	0.0568	198.58	197.95	191.84	+	0.32	+	3.51
36 Condiments and Spices	1.4919	288.06	285.94	265.98	+	0.74	+	8.30
37 Dessert Preparation	0.0133	268.52	268.52	257.42	+	0.00	+	4.31
38 Tea	1.2566	333.85	333.85	329.51	+	0.00	+	1.32
39 Beverages	0.5537	238.41	238.28	197.94	+	0.05	+	20.45
Alcoholic Beverages, Tobacco	1.2786	352.81	346.06	335.47	+	1.95	+	5.17
40 Cigarettes	1.2364	353.51	346.78	337.20	+	1.94	+	4.84
41 Pan Prepared	0.0422	332.29	325.21	284.58	+	2.18	+	16.77
Clothing and footwear	9.4826	252.06	249.90	212.80	+	0.86	+	18.45
42 Cotton Cloth	2.8381	277.94	273.54	232.66	+	1.61	+	19.46
43 Woollen Cloth	1.0959	247.23	245.76	208.69	+	0.60	+	18.47
44 Readymade Garments	1.1345	224.05	224.04	202.81	+	0.00	+	10.47
45 Woollen Readymade Garments	0.5401	268.35	268.35	193.86	+	0.00	+	38.42
46 Tailoring	1.2999	236.11	234.74	207.77	+	0.58	+	13.64
47 Hosiery	0.4322	333.53	326.98	279.82	+	2.00	+	19.19
48 Dopatta	0.2078	237.94	233.21	197.56	+	2.03	+	20.44
49 Cleaning and Laundering	0.0176	249.38	249.38	239.32	+	0.00	+	4.20
50 Footwear	1.9165	222.50	222.09	186.70	+	0.18	+	19.18
Housing, water, Elec., Gas an	18.4853	225.54	221.78	187.58	+	1.70	+	20.24
51 House Rent	8.6110	169.03	169.03	156.90	+	0.00	+	7.73
52 Construction Input Items	0.6306	230.37	225.43	212.30	+	2.19	+	8.51
53 Construction Wage Rates	0.2526	228.90	227.98	210.66	+	0.40	+	8.66
54 Water Supply	0.0645	292.34	292.34	222.06	+	0.00	+	31.65
55 Garbage Collection	0.0080	189.52	189.52	169.61	+	0.00	+	11.74
56 Electricity Charges	3.4431	317.36	293.57	190.25	+	8.10	+	<u>66.81</u>
57 Liquefied Hydrocarbons	0.9994	283.78	292.26	260.09	-	2.90	+	9.11
58 Solid Fuel	4.4761	248.84	250.45	223.11	-	0.64	+	11.53

Annexure B:CPI (Rural) Index Numbers by Commodity Groups & Commodities (2015-16=100)

Item and Specification	Weight	Index Numbers			% Change in Jun 2024 over			
		Jun 24	May 24	Jun 23	May 2024	Jun 2023		
<i>Furnishing and household equipments</i>	4.1031	283.21	282.26	247.55	+	0.34	+	14.41
59 Furniture and Furnishing	0.5786	264.30	262.57	217.10	+	0.66	+	21.74
60 Household Textiles	0.4382	222.60	222.04	190.11	+	0.25	+	17.09
61 Household Equipments	1.2774	278.85	276.38	247.36	+	0.89	+	12.73
62 Plastic Products	0.0776	272.76	270.38	230.19	+	0.88	+	18.49
63 Major Tools and Equipments	0.0324	224.93	223.90	205.92	+	0.46	+	9.23
64 Washing Soaps, Detergents and	1.6989	310.15	310.58	274.46	-	0.14	+	13.00
<i>Health</i>	3.5141	241.78	239.15	204.97	+	1.10	+	17.96
65 Drugs and Medicines	1.5792	278.59	274.23	225.89	+	1.59	+	23.33
66 Doctor Clinic Fee	0.5128	281.61	281.61	256.46	+	0.00	+	9.81
67 Dental Services	0.0181	191.38	191.38	180.56	+	0.00	+	5.99
68 Medical Tests	0.3967	216.18	214.29	187.97	+	0.88	+	15.01
69 Hospitals Services	1.0073	174.78	173.18	153.10	+	0.92	+	14.16
<i>Transport</i>	5.5580	316.71	324.55	278.77	-	2.42	+	13.61
70 Motor Vehicles	0.7305	193.04	192.94	190.15	+	0.05	+	1.52
71 Motor Vehicles Accessories	0.1572	260.92	261.72	244.47	-	0.31	+	6.73
72 Motor Fuels	2.4932	358.98	381.24	355.75	-	5.84	+	0.91
73 Mechanical Services	0.3645	221.45	221.45	215.31	+	0.00	+	2.85
74 Motor Vehicle Tax	0.0174	150.93	150.93	150.93	+	0.00	+	0.00
75 Transport Services	1.7952	334.17	327.48	225.06	+	2.04	+	48.48
<i>Communication</i>	1.9940	127.84	127.80	109.88	+	0.03	+	16.35
76 Postal Services	0.0070	179.32	179.32	149.43	+	0.00	+	20.00
77 Communication Apparatus	0.3362	156.62	156.37	144.90	+	0.16	+	8.09
78 Communication Services	1.6508	121.76	121.76	102.58	+	0.00	+	18.70
<i>Recreation and culture</i>	1.3764	295.53	283.17	261.73	+	4.36	+	12.91
79 Recreation and Culture	0.4763	224.89	219.49	209.76	+	2.46	+	7.21
80 Text Books	0.5047	360.44	333.79	311.70	+	7.98	+	15.64
81 Newspapers	0.0230	242.52	242.52	242.52	+	0.00	+	0.00
82 Stationery	0.3724	301.18	298.53	261.66	+	0.89	+	15.10
<i>Education</i>	2.1342	216.95	214.78	174.37	+	1.01	+	24.42
83 Education	2.1342	216.95	214.78	174.37	+	1.01	+	24.42
<i>Restaurants and hotels</i>	6.1895	271.58	270.88	234.81	+	0.26	+	15.66
84 Readymade Food	3.8001	296.37	296.63	263.86	-	0.09	+	12.32
85 Marriage Hall Charges	2.2525	239.39	237.01	193.45	+	1.00	+	23.75
86 Accommodation Services	0.1369	113.40	113.40	108.81	+	0.00	+	4.22
<i>Misc. goods and services</i>	5.0174	295.45	292.50	252.93	+	1.01	+	16.81
87 Personal Grooming Services	1.5363	297.01	294.35	257.45	+	0.90	+	15.37
88 Appliances/Articles/Products	2.2746	247.71	244.83	202.57	+	1.18	+	22.28
89 Personal Effects n.e.c.	1.2065	383.47	380.00	342.11	+	0.91	+	12.09

Annexure C: Wholesale Price Indices by Major Groups & Commodities (2015-16=100)

Item and Specification	Weight	Index Numbers			% Change in Jun 2024 over	
		Jun 24	May 24	Jun 23	May 2024	Jun 2023
General	100.0000	308.85	307.70	279.21	+ 0.37	+ 10.62
Agriculture Forestry & Fishery	25.7674	280.57	277.02	276.75	+ 1.28	+ 1.38
001 Wheat	0.6297	225.48	246.27	332.51	- 8.44	- 32.19
002 Maize	0.6674	233.67	236.88	281.76	- 1.36	- 17.07
003 Rice	2.4413	340.82	350.96	330.20	- 2.89	+ 3.22
004 Sorghum / Jowar	0.0214	279.65	280.39	312.80	- 0.26	- 10.60
005 Millet / Bajra	0.0374	253.10	257.36	304.10	- 1.66	- 16.77
006 Vegetables	1.2441	301.29	250.49	199.05	+ 20.28	+ <u>51.36</u>
007 Fresh Fruits	1.5144	255.29	246.93	302.23	+ 3.39	- 15.53
008 Dry Fruits	0.2478	330.22	315.82	318.98	+ 4.56	+ 3.52
009 Cotton Seeds	1.1511	181.51	178.34	197.85	+ 1.78	- 8.26
010 Other Oil Seeds	0.0722	272.93	276.03	336.82	- 1.12	- 18.97
011 Edible Roots / Potatoes	0.2540	473.34	416.80	456.02	+ 13.57	+ 3.80
012 Stimulant & Spice Crops	0.1634	478.59	456.67	535.43	+ 4.80	- 10.62
013 Pulses	0.4901	278.93	269.67	253.58	+ 3.43	+ 10.00
014 Sugar Crops	1.0725	319.50	324.99	273.35	- 1.69	+ 16.88
015 Fibre Crops	5.3169	361.99	372.13	377.84	- 2.72	- 4.19
016 Unmanufactured Tobacco	0.0742	575.04	566.62	316.93	+ 1.49	+ <u>81.44</u>
017 Poultry	0.5633	242.12	222.00	317.34	+ 9.06	- 23.70
018 Raw Milk from Bovine Animals	7.0279	238.31	226.63	218.25	+ 5.15	+ 9.19
019 Eggs	0.5034	286.40	302.25	276.13	- 5.24	+ 3.72
020 Raw Animal Materials / Wool	0.0351	143.62	143.62	138.46	+ 0.00	+ 3.73
021 Hides, Skins & Fur Skins, Raw	0.4834	54.38	54.38	50.50	+ 0.00	+ 7.68
022 Fuel Wood in Logs	0.0179	183.47	183.47	173.91	+ 0.00	+ 5.50
023 Fish Live Fresh or Chilled	1.7295	216.83	216.83	192.81	+ 0.00	+ 12.46
Ores/Minerals, Elec., Gas & Water	12.0069	373.04	364.31	233.26	+ 2.40	+ <u>59.92</u>
024 Coal not Agglomerated	0.7508	194.29	194.29	180.41	+ 0.00	+ 7.69
025 Natural Gas Liquefied	5.7065	416.35	417.11	240.28	- 0.18	+ <u>73.28</u>
026 Salt & Pure Sodium Chloride	0.0584	382.87	367.97	313.66	+ 4.05	+ 22.07
027 Electrical Energy	5.4912	352.36	332.63	232.33	+ 5.93	+ <u>51.66</u>
Food, Beverages, Tobacco, Textiles & Leather	31.1122	260.25	260.62	251.67	- 0.14	+ 3.41
Food Products, Beverages & Tobacco	20.0718	270.49	271.11	265.83	- 0.23	+ 1.75
028 Meat of Animals	3.4559	300.99	300.40	250.70	+ 0.20	+ 20.06
029 Vegetables & Fruit Juice	0.0058	239.27	239.02	230.68	+ 0.10	+ 3.72
030 Dried Fruits & Nuts	0.1733	379.57	375.30	320.99	+ 1.14	+ 18.25
031 Fruit Juices	0.3880	261.15	261.12	222.61	+ 0.01	+ 17.31
032 Vegetable Oils Refined	1.9242	271.34	271.82	298.04	- 0.18	- 8.96
033 Vegetable Ghee	1.5632	311.06	311.12	354.60	- 0.02	- 12.28
034 Oil Cakes	0.9611	270.72	269.92	262.16	+ 0.30	+ 3.27
035 Processed Liquid Milk	4.4437	259.20	256.22	239.23	+ 1.16	+ 8.35
036 Milk & Cream in Solid Form	0.0316	265.38	261.27	238.33	+ 1.57	+ 11.35
037 Ice Cream	0.0047	199.18	199.18	198.75	+ 0.00	+ 0.22
038 Dairy Products N.E.C	0.0117	279.57	279.67	227.00	- 0.04	+ 23.16
039 Wheat Flour	2.3034	236.20	260.19	332.03	- 9.22	- 28.86
040 Other Cereal Flour	0.0604	247.28	231.03	227.82	+ 7.03	+ 8.54
041 Sugar Refined	1.7975	235.63	235.76	205.60	- 0.06	+ 14.61
042 Chocolate	0.0139	122.88	122.88	102.83	+ 0.00	+ 19.50
043 Sugar Confectionary	0.0738	236.84	236.84	217.02	+ 0.00	+ 9.13
044 Coffee & Tea	0.7303	269.87	269.87	250.96	+ 0.00	+ 7.54
045 Spices	0.1449	335.29	341.74	211.07	- 1.89	+ <u>58.85</u>
046 Other Food Products	0.0336	235.20	235.20	159.50	+ 0.00	+ 47.46
047 Mineral Water	0.0207	206.26	212.56	188.89	- 2.96	+ 9.20
048 Beverages	0.6303	259.35	259.21	231.54	+ 0.05	+ 12.01
049 Tobacco Products	1.2998	280.52	259.58	259.58	+ 8.07	+ 8.07
Textiles & Apparels	10.3289	245.38	245.31	229.23	+ 0.03	+ 7.05
050 Cotton Yarn	5.2491	239.61	239.61	239.61	+ 0.00	+ 0.00
051 Nylon Yarn	0.1719	95.24	95.24	95.24	+ 0.00	+ 0.00
052 Blended Yarn	0.1689	148.12	148.12	148.12	+ 0.00	+ 0.00
053 Woven Fabrics	0.0128	255.51	255.48	200.10	+ 0.01	+ 27.69
054 Cotton Fabrics	0.6343	334.78	334.60	265.61	+ 0.05	+ 26.04
055 Other Fabrics	1.1016	239.08	238.91	210.23	+ 0.07	+ 13.72
056 Silk & Rayon Fabrics	0.7350	374.41	374.28	309.48	+ 0.03	+ 20.98

Annexure C: Wholesale Price Indices by Major Groups & Commodities (2015-16=100)

Item and Specification	Weight	Index Numbers			% Change in Jun 2024 over	
		Jun 24	May 24	Jun 23	May 2024	Jun 2023
057 Towels	0.1235	197.87	197.87	182.09	+ 0.00	+ 8.67
058 Blankets	0.0029	147.94	147.94	138.45	+ 0.00	+ 6.85
059 Bed Sheets	0.0913	167.37	167.37	180.56	+ 0.00	- 7.31
060 Quilts	0.0019	234.52	234.52	203.36	+ 0.00	+ 15.32
061 Woollen Carpets	0.0383	173.86	173.86	166.01	+ 0.00	+ 4.73
062 Synthetic Carpets	0.0566	150.83	150.83	132.43	+ 0.00	+ 13.89
063 Hosiery Products	0.8832	193.39	192.93	182.34	+ 0.24	+ 6.06
064 Readymade Garments	1.0576	240.76	240.76	211.61	+ 0.00	+ 13.78
Leather Products	0.7115	186.88	186.88	177.88	+ 0.00	+ 5.06
065 Leather Without Hair	0.2973	182.58	182.58	169.84	+ 0.00	+ 7.50
066 Other Leather N.E.C	0.2567	158.95	158.95	153.47	+ 0.00	+ 3.57
067 Footwears	0.1575	240.49	240.49	232.83	+ 0.00	+ 3.29
Other Transportable Goods	22.3979	344.62	350.63	316.60	- 1.71	+ 8.85
068 Timber	0.0165	229.66	229.66	204.20	+ 0.00	+ 12.47
069 Printing Paper	0.4279	224.19	224.19	270.83	+ 0.00	- 17.22
070 Hard Board	0.1579	209.29	209.29	209.29	+ 0.00	+ 0.00
071 Motor Spirit	1.6268	372.84	398.93	372.10	- 6.54	+ 0.20
072 Diesel Oil	5.4849	336.73	351.59	318.48	- 4.23	+ 5.73
073 Kerosene Oil	0.2151	336.77	349.89	321.77	- 3.75	+ 4.66
074 Furnace Oil	3.2664	604.82	604.82	542.32	+ 0.00	+ 11.52
075 Mobil Oil	0.7114	236.05	236.05	224.43	+ 0.00	+ 5.18
076 Chemicals	1.7720	274.52	276.35	327.42	- 0.66	- 16.16
077 Dyeing Material	0.1539	238.43	220.27	220.27	+ 8.24	+ 8.24
078 Fertilizers	2.8657	270.88	280.04	197.42	- 3.27	+ 37.21
079 Pesticides	0.2763	190.04	190.03	176.78	+ 0.01	+ 7.50
080 Insecticides	0.1276	151.05	151.05	151.05	+ 0.00	+ 0.00
081 Paints & Varnishes	0.1916	269.25	269.25	241.84	+ 0.00	+ 11.33
082 Medicines	1.1428	335.64	329.57	275.79	+ 1.84	+ 21.70
083 Soaps & Detergents	0.8168	229.00	228.97	211.92	+ 0.01	+ 8.06
084 Auto Tyres	0.2703	246.85	246.79	244.27	+ 0.02	+ 1.06
085 Plastic Products	0.4550	194.82	194.80	168.08	+ 0.01	+ 15.91
086 Glass sheets	0.2089	357.14	355.31	281.88	+ 0.52	+ 26.70
087 Other Glass Articles	0.1635	209.73	209.73	180.72	+ 0.00	+ 16.05
088 Ceramics & Sanitary Fixture	0.0244	209.88	209.84	180.18	+ 0.02	+ 16.48
089 Bricks, Blocks & Tiles	0.1566	192.72	192.56	171.09	+ 0.08	+ 12.64
090 Cement	1.8145	251.02	244.74	215.59	+ 2.57	+ 16.43
091 Bed Foam	0.0006	331.67	332.28	297.47	- 0.18	+ 11.50
092 Matches	0.0505	3323.96	3323.96	2977.39	+ 0.00	+ 11.64
Metal Product, Machinery & Equipments	8.7156	385.61	378.16	351.99	+ 1.97	+ 9.55
093 Steel Bar & Sheets	1.4615	348.19	336.81	355.66	+ 3.38	- 2.10
094 Pipe Fittings	0.0780	435.75	435.75	403.20	+ 0.00	+ 8.07
095 Steel Products	0.3879	245.52	245.52	212.56	+ 0.00	+ 15.51
096 Engines & Motors	0.0046	186.89	186.89	117.67	+ 0.00	+ 58.83
097 Vacuum Pumps	0.0155	107.56	107.56	107.56	+ 0.00	+ 0.00
098 Air Conditioners	0.0049	310.06	304.45	312.05	+ 1.84	- 0.64
099 Cultivators	0.0551	351.39	361.67	282.23	- 2.84	+ 24.50
100 Chuff Cutter	0.1293	504.72	504.72	490.43	+ 0.00	+ 2.91
101 Tractors	0.0028	297.43	297.43	274.86	+ 0.00	+ 8.21
102 Lathe Machines	0.0525	472.24	472.24	408.48	+ 0.00	+ 15.61
103 Concrete Mixture	0.0107	426.37	426.37	255.01	+ 0.00	+ 67.20
104 Fridge,WashM,SewM,Fans,Iron	1.1645	290.03	279.78	252.38	+ 3.66	+ 14.92
105 Electric Wires	0.0912	311.53	293.90	228.43	+ 6.00	+ 36.38
106 Lighting Equipments	1.4431	734.28	733.30	671.98	+ 0.13	+ 9.27
107 Radio & Television	0.1843	196.31	196.31	179.92	+ 0.00	+ 9.11
108 Motor Vehicles	0.0244	256.95	256.95	255.73	+ 0.00	+ 0.48
109 Motorcycles	0.2570	263.76	263.76	260.97	+ 0.00	+ 1.07
110 Bicycles	3.3483	318.93	308.80	279.41	+ 3.28	+ 14.14
