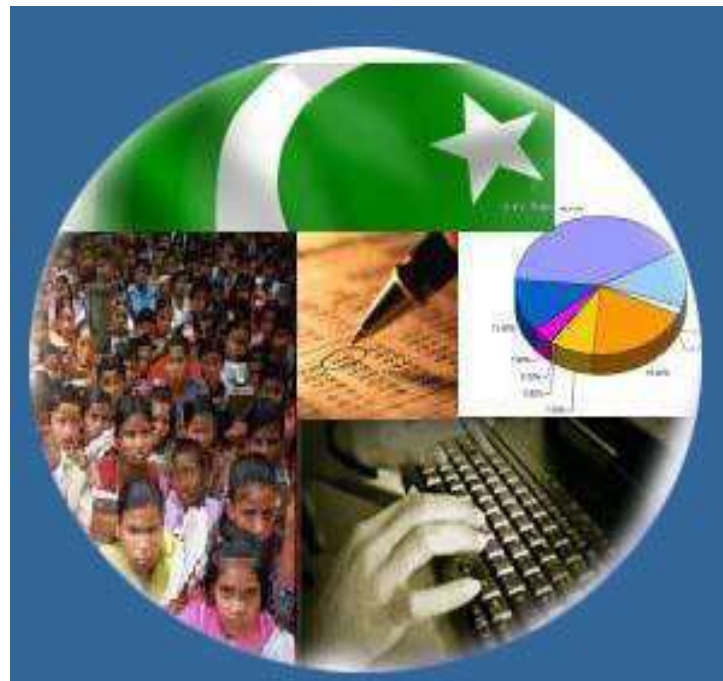




Monthly Review on Price Indices



**July 2024
(Base Year 2015-16)**

**Government of Pakistan
Ministry of Planning, Development & Special Initiatives
Pakistan Bureau of Statistics
Islamabad**

PRICE STATISTICS TEAM

S#	Name	Designation
1.	Dr. Naeem Uz Zafar	Chief Statistician
2.	Dr. Bahrawar Jan	Deputy Director General
3.	Mr. Naseer Ahmad	Director
4.	Dr. Ahtasham Gul	Chief Statistical Officer
5.	Mr. Adnan Shams	Statistical Officer
6.	Mr. Kashif Ali	Statistical Officer
7.	Miss. Umaira Zareen	Statistical Officer
8.	Mr. Kashif Yaqoob	Statistical Officer
9.	Mr. Umer Farooq	Statistical Assistant
10.	Mr. Ansar Mahmood	Statistical Assistant
12.	Mrs. Madiha Gulfraz	Statistical Assistant
13.	Mrs. Humail Fatima	Statistical Assistant
14.	Mr. Muhammad Asif	Statistical Assistant

IT & SOFTWARE TEAM

1.	Mr. Muhammad Ehtesham	Director (DP)
2.	Mrs. Sobia Munawar	Director (DP)
3.	Mr. Arsalan Bashir	Data Processing Officer
4.	Mr. Muhammad Kibria	Data Processing Officer
5.	Mr. Muhammad Irfan Bajwa	Data Processing Assistant

Inflation in Brief

- CPI inflation General**, increased to 11.1% on year-on-year basis in July 2024 as compared to an increase of 12.6% in the previous month and 28.3% in July 2023. On month-on-month basis, it increased to 2.1% in July 2024 as compared to an increase of 0.5% in the previous month and an increase of 3.5% in July 2023.
- CPI inflation Urban**, increased to 13.2% on year-on-year basis in July 2024 as compared to an increase of 14.9% in the previous month and 26.3% in July 2023. On month-on-month basis, it increased to 2.0% in July 2024 as compared to an increase of 0.6% in the previous month and an increase of 3.6% in July 2023.
- CPI inflation Rural**, increased to 8.1% on year-on-year basis in July 2024 as compared to an increase of 9.3% in the previous month and 31.3% in July 2023. On month-on-month basis, it increased to 2.2% in July 2024 as compared to an increase of 0.3% in the previous month and an increase of 3.3% in July 2023.
- SPI inflation** on YoY increased to 15.7% in July 2024 as compared to an increase of 16.6% a month earlier and 29.3% in July 2023. On MoM basis, it increased by 2.0% in July 2024 as compared to an increase of 1.3% a month earlier and an increase of 2.8% in July 2023.
- WPI inflation** on YoY basis increased to 10.4% in July 2024 as compared to an increase of 10.6% a month earlier and an increase of 23.1% in July 2023. On MoM basis, it increased by 2.3% in July 2024 as compare to an increase of 0.4% in the previous month and an increase of 2.5% in corresponding month of last year i.e. July 2023.
- Figures 1 and 2 show graphically the yearly data of Table 1.a for Urban and Rural CPI while Table 1.1 shows "Period Average" and "YoY" percentage changes in indices of three years.

Table 1.a General Inflation (%) (Base 2015-16)																		
PERIOD	CPI														SPI**		WPI	
	General						Food				Non-Food							
	National		Urban		Rural		Urban		Rural		Urban		Rural		YoY	MoM	YoY	MoM
	YoY	MoM	YoY	MoM	YoY	MoM	YoY	MoM	YoY	MoM	YoY	MoM	YoY	MoM				
Oct-22	26.6	4.7	24.6	4.5	29.5	5.0	34.7	4.5	37.2	6.1	18.2	4.5	22.4	3.9	24.0	-1.5	32.6	-0.5
Nov-22	23.8	0.8	21.6	0.4	27.2	1.3	29.7	0.0	33.5	0.5	16.4	0.6	21.4	2.1	27.1	6.1	27.7	0.0
Dec-22	24.5	0.5	21.6	0.3	28.8	0.7	32.7	0.0	37.9	0.1	14.8	0.6	20.7	1.4	27.8	0.2	27.1	-0.7
Jan-23	27.6	2.9	24.4	2.4	32.3	3.6	39.0	3.9	45.2	5.7	15.6	1.2	20.9	1.5	30.5	1.3	28.5	1.8
Feb-23	31.5	4.3	28.8	4.5	35.6	4.0	41.9	4.3	47.0	3.9	20.8	4.7	25.3	4.1	33.6	3.7	36.4	8.2
Mar-23	35.4	3.7	33.0	3.9	38.9	3.5	47.1	5.6	50.2	4.5	24.1	2.7	28.5	2.4	40.4	5.8	37.5	4.7
Apr-23	36.4	2.4	33.5	2.0	40.7	3.0	46.8	3.4	52.2	4.2	24.9	1.0	29.9	1.6	42.1	2.7	33.4	0.1
May-23	38.0	1.6	35.1	1.5	42.2	1.7	48.1	1.9	52.4	1.4	26.6	1.2	32.5	2.0	43.0	1.3	32.8	1.0
Jun-23	29.4	-0.3	27.3	0.1	32.4	-0.8	40.8	0.1	41.5	-1.6	18.7	0.1	23.8	0.1	34.9	0.2	22.4	-0.3
Jul-23	28.3	3.5	26.3	3.6	31.3	3.3	40.2	3.7	41.3	3.5	17.3	3.5	22.0	3.0	29.3	2.8	23.1	2.5
Aug-23	27.4	1.7	25.0	1.6	30.9	1.9	38.8	0.6	40.6	0.8	16.3	2.4	22.0	3.1	27.9	4.1	24.3	4.2
Sep-23	31.4	2.0	29.7	1.7	33.9	2.5	33.9	1.5	35.4	1.8	26.8	1.8	32.3	3.2	32.0	1.7	26.4	3.1
Oct-23	26.8	1.0	25.5	1.1	28.7	0.9	28.9	0.6	28.6	0.7	23.1	1.4	28.8	1.1	34.2	0.2	24.6	-1.9
Nov-23	29.2	2.7	30.4	4.3	27.5	0.4	29.8	0.8	29.2	1.0	30.9	7.0	25.9	-0.2	30.6	3.3	26.4	1.4
Dec-23	29.7	0.8	30.9	0.7	27.9	1.0	28.8	-0.7	29.3	0.1	32.4	1.8	26.4	1.8	35.3	3.8	27.3	0.0
Jan-24	28.3	1.8	30.2	1.8	25.7	1.9	27.4	2.8	25.1	2.3	32.3	1.1	26.3	1.4	36.2	2.0	27.0	1.5
Feb-24	23.1	0.0	24.9	0.2	20.5	-0.3	20.2	-1.5	19.0	-1.1	28.2	1.5	22.1	0.6	30.4	-0.8	18.7	1.1
Mar-24	20.7	1.7	21.9	1.4	19.0	2.1	16.6	2.4	17.1	2.8	25.8	0.7	21.0	1.4	25.9	2.1	14.8	1.3
Apr-24	17.3	-0.4	19.4	-0.1	14.5	-0.9	11.3	-1.3	9.5	-2.6	25.6	0.8	20.0	0.8	21.6	-0.7	13.9	-0.7
May-24	11.8	-3.2	14.3	-2.8	8.2	-3.9	2.2	-6.3	-0.1	-7.4	23.6	-0.4	17.2	-0.4	15.3	-4.0	9.9	-2.5
Jun-24	12.6	0.5	14.9	0.6	9.3	0.3	2.6	0.4	1.3	-0.2	24.3	0.7	17.9	0.8	16.6	1.3	10.6	0.4
July-24	11.1	2.1	13.2	2.0	8.1	2.2	3.4	4.5	1.3	3.6	20.7	0.5	15.5	0.9	15.7	2.0	10.4	2.3

** SPI for quintile 1. Digits 0.0* are due to rounding off.

Core inflation (NFNE)

7. Measured by **non-food non-energy Urban** increased to 11.7% on (YoY) basis in July 2024 as compared to an increase of 12.2% in the previous month and 18.4% in July 2023. On (MoM) basis, it increased by 0.7% in July 2024 as compared to an increase of 0.6% in previous month and an increase of 1.2% in corresponding month of last year i.e. July, 2023.
8. Measured by **non-food non-energy Rural** increased to 16.9% on (YoY) basis in July 2024 as compared to an increase of 17.0% in the previous month and 24.6% in July 2023. On (MoM) basis, it increased by 1.1% in July 2024 as compared to an increase of 0.9% in previous month and an increase of 1.2% in corresponding month of last year i.e. July 2023.

Core inflation (Trimmed)

9. Measured by 20% **weighted trimmed mean Urban** remained stable at 10.3% on (YoY) basis in July 2024 as compared to previous month and 21.7% in July 2023. On (MoM) basis, it increased to 1.2% in July 2024 as compared to an increase of 0.6% in the previous month and an increase of 1.9% in corresponding month of last year i.e. July 2023.
10. Measured by 20% **weighted trimmed mean Rural** increased to 11.3% on (YoY) basis in July 2024 as compared to 11.0% in the previous month and 28.7% in July 2023. On (MoM) basis, it increased to 1.7% in July 2024 as compared to an increase of 0.5% in the previous month and an increase of 2.4% in corresponding month of last year i.e. July 2023.

Table 1.b Core Inflation (%) (Base 2015-16)

Period	NFNE				Trimmed			
	Urban		Rural		Urban		Rural	
	YoY	MoM	YoY	MoM	YoY	MoM	YoY	MoM
Jul-23	18.4	1.2	24.6	1.2	21.7	1.9	28.7	2.4
Aug-23	18.4	1.8	25.9	2.8	23.0	1.5	30.5	1.4
Sep-23	18.6	1.0	27.3	2.6	25.0	1.1	33.3	1.7
Oct-23	18.5	1.2	26.7	1.0	24.6	0.6	30.4	0.7
Nov-23	18.6	0.9	25.9	1.4	22.9	0.1	27.9	0.5
Dec-23	18.2	0.8	25.1	0.9	23.3	0.3	28.0	0.7
Jan-24	17.8	1.1	24.6	1.2	22.1	1.0	25.8	1.2
Feb-24	15.5	0.3	21.9	0.4	16.0	0.3	21.3	0.4
Mar-24	12.8	0.1	20.0	0.8	14.8	0.6	18.4	0.9
Apr-24	13.1	2.1	19.3	2.0	13.4	0.5	15.0	0.6
May-24	12.3	0.4	17.0	0.5	11.0	-0.5	10.6	-0.9
June-24	12.2	0.6	17.0	0.9	10.3	0.6	11.0	0.5
July-24	11.7	0.7	16.9	1.1	10.3	1.2	11.3	1.7

Table 1.1(a): Period Average and YoY % Changes of Indices

INDEX	Average July - July % Changes		
	2024-2025	2023-2024	2022-2023
CPI (National)	11.09	28.30	24.93
CPI (Urban)	13.18	26.26	23.59
CPI (Rural)	8.14	31.29	26.93
SPI	15.74	29.32	28.18
WPI	10.36	23.07	38.55

Figure 1: Urban Inflation - YoY, Special Indices

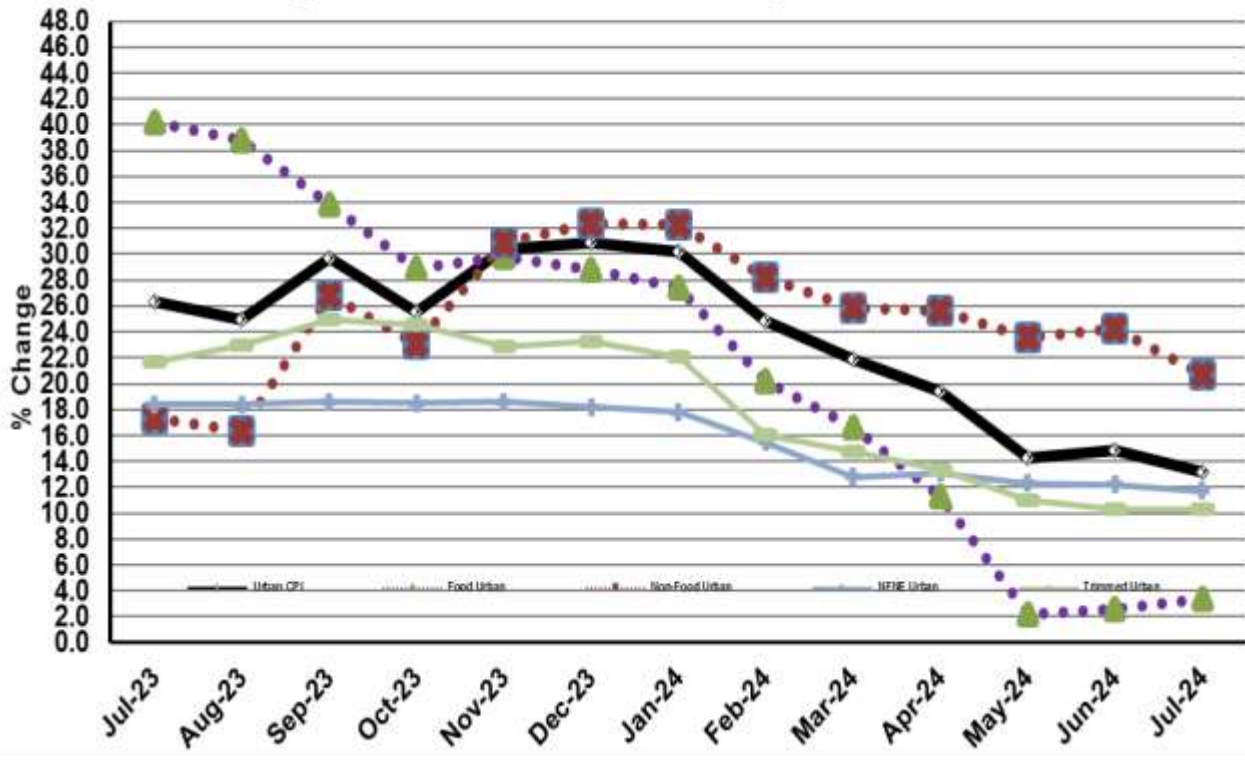


Figure 2: Rural Inflation - YoY, Special Indices

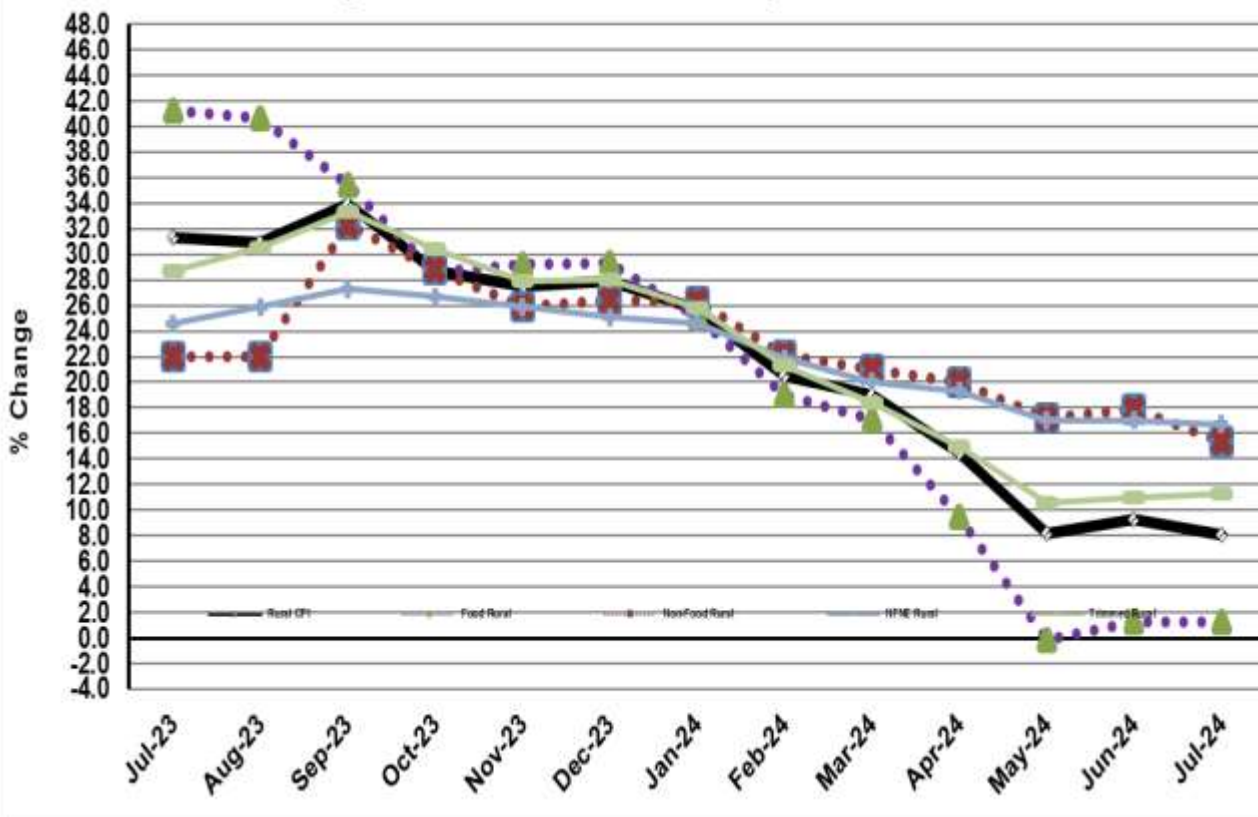


Figure 3: Urban Inflation - MoM, Special Indices

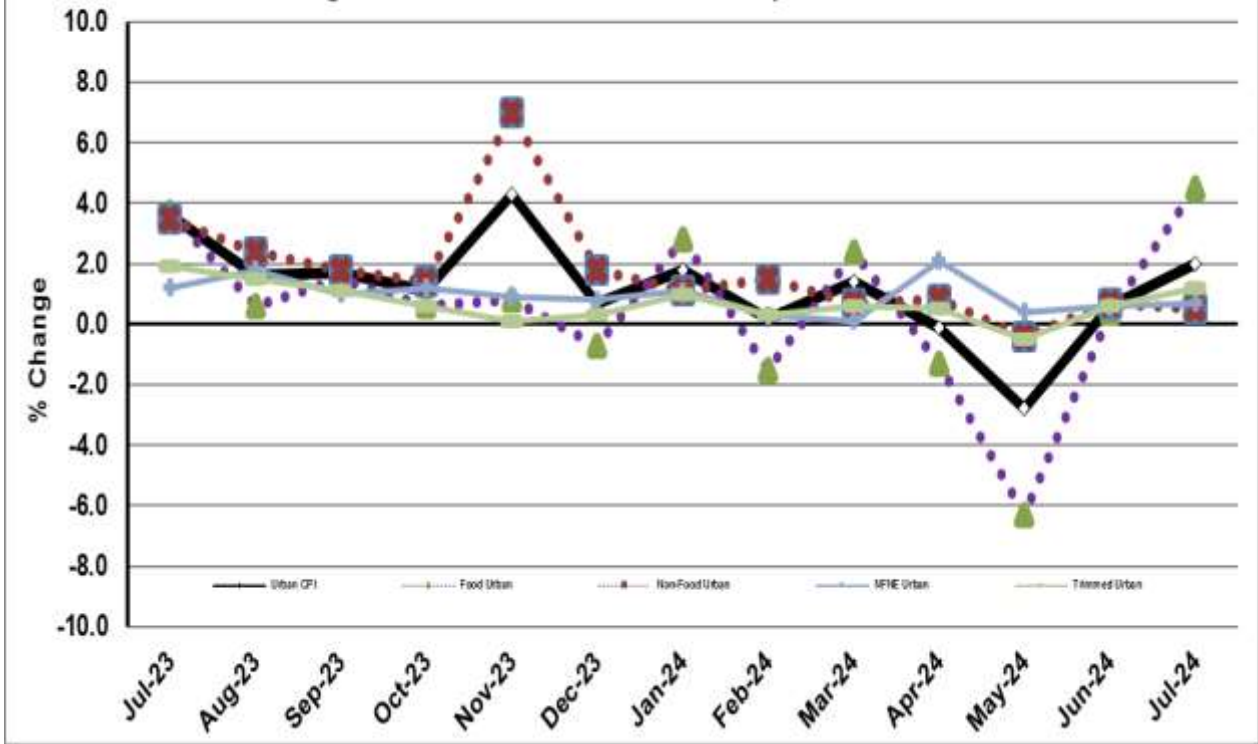


Figure 4: Rural Inflation - MoM, Special Indices

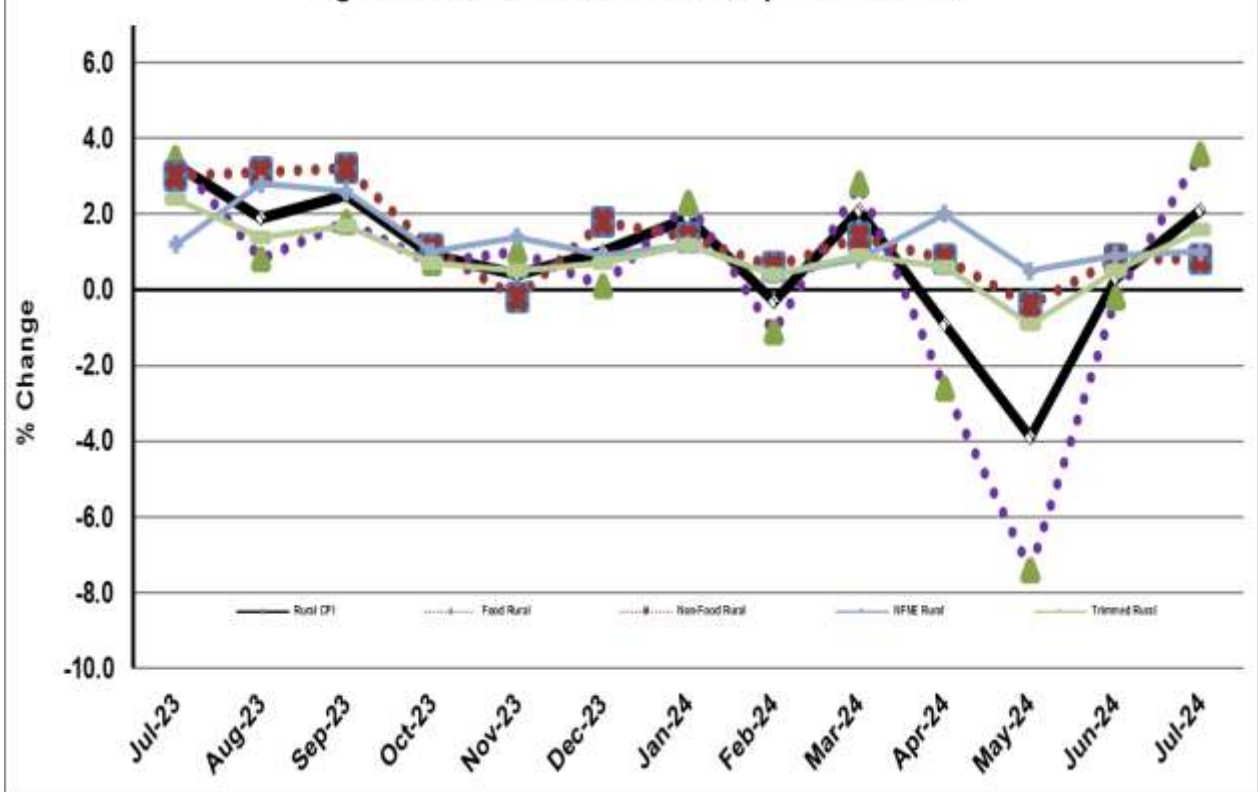


Figure 5: CPI YoY (National, Urban, Rural)

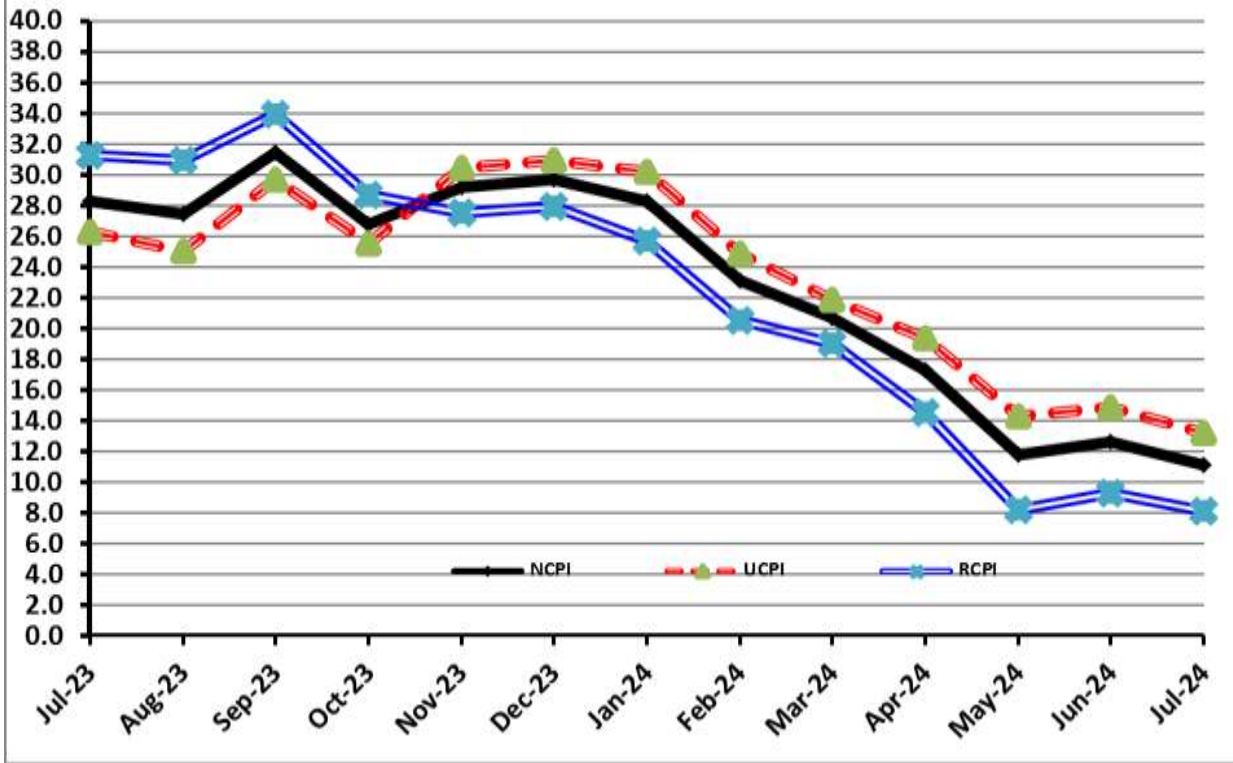
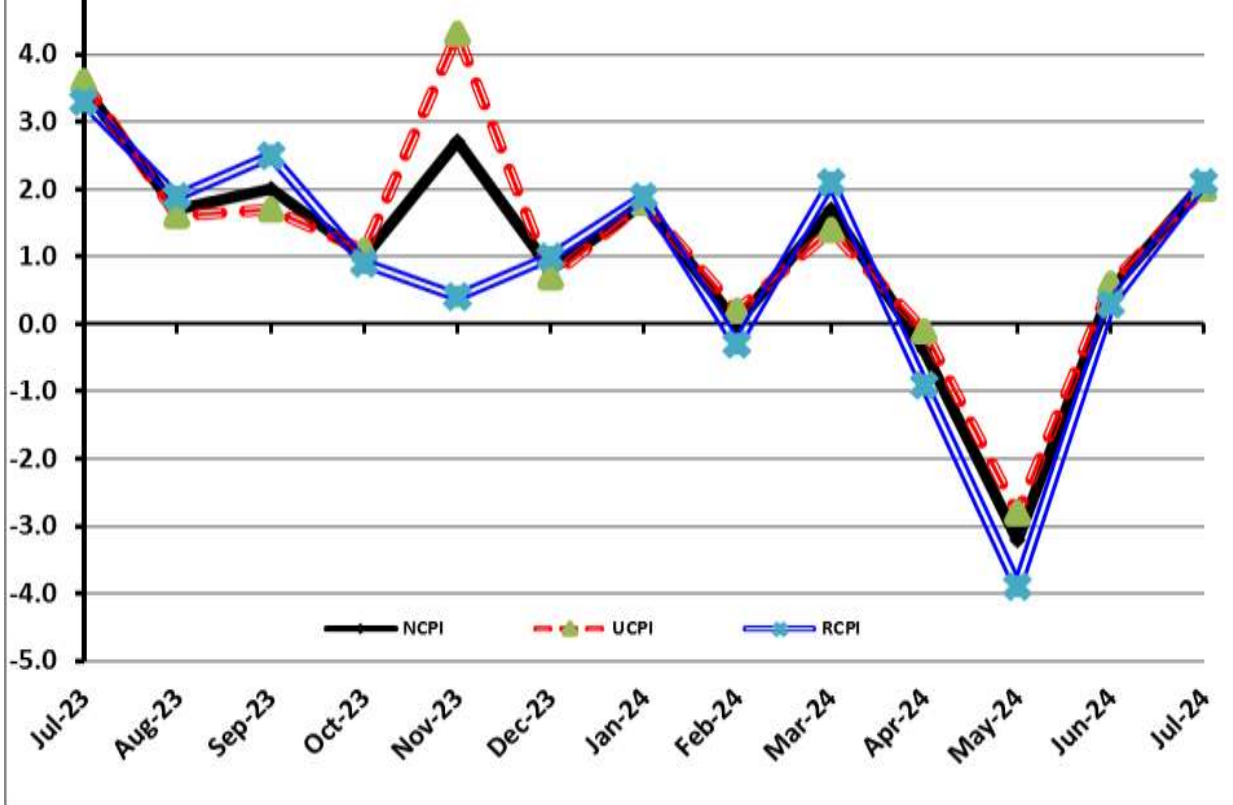


Figure 6: CPI MoM (National, Urban, Rural)



I. National Consumer Price Index (N-CPI)

The **National Consumer Price Index** for **July 2024** is increased to **2.10%** over **June 2024** and increased to **11.09%** over corresponding month of the last year i.e. **July 2023**.

Table 1: Consumer Price Index (National) by Group of Commodities and Services (Base 2015-16)

No	Group	Group Weight (%)	Indices			% Change July 2024 Over		Impact (In % points) July 2024 Over	
			July 24	June 24	July 23	June 24	July 23	June 24	July 23
	General	100.00	261.32	255.94	235.23	2.10	11.09	2.10	11.09
1.	Food & Non-alcoholic Bev.	34.58	276.69	264.33	272.44	4.67	1.56	1.67	0.62
	<i>Non-perishable Food Items</i>	29.60	272.54	263.94	279.06	3.26	-2.34	0.99	-0.82
	<i>Perishable Food Items</i>	4.99	301.30	266.62	233.15	13.01	29.23	0.68	1.44
2.	Alcoholic Bev. & Tobacco	1.02	383.43	377.47	358.18	1.58	7.05	0.02	0.11
3.	Clothing & Footwear	8.60	243.81	241.68	206.29	0.88	18.18	0.07	1.37
4.	Housing, Water, Electricity, Gas & Fuels	23.63	240.31	240.15	191.79	0.07	25.30	0.01	4.87
5.	Furnishing & Household Equipment Maintenance	4.10	269.77	268.30	242.90	0.55	11.06	0.02	0.47
6.	Health	2.79	248.48	244.56	208.58	1.60	19.13	0.04	0.47
7.	Transport	5.91	312.54	308.23	278.60	1.40	12.18	0.10	0.85
8.	Communication	2.21	134.61	134.52	118.82	0.07	13.29	0.00	0.15
9.	Recreation & Culture	1.59	270.46	269.00	245.34	0.54	10.24	0.01	0.17
10.	Education	3.79	199.73	199.58	172.27	0.08	15.94	0.00	0.44
11.	Restaurants & Hotels	6.92	269.31	266.53	242.23	1.05	11.18	0.08	0.80
12.	Miscellaneous	4.87	288.40	284.93	251.69	1.21	14.58	0.07	0.76

II. Urban Consumer Price Index (UCPI)

The Urban Consumer Price Index for **July 2024** is increased to **2.03%** over **June 2024** and increased to **13.18%** over corresponding month of the last year i.e. **July 2023**.

Table 2: Consumer Price Index (Urban) by Group of Commodities and Services (Base 2015-16)

No	Group	Group Weight (%)	Indices			% Change July 2024 Over		Impact (In % points) July 2024 Over	
			July 24	June 24	July 23	June 24	July 23	June 24	July 23
	General	100.00	258.59	253.44	228.47	2.03	13.18	2.03	13.18
1.	Food & Non-alcoholic Bev.	30.42	276.10	262.18	268.74	5.31	2.74	1.67	0.98
	<i>Non-perishable Food Items</i>	25.97	271.88	262.39	274.29	3.62	-0.88	0.97	-0.27
	<i>Perishable Food Items</i>	4.46	300.69	260.92	236.41	15.24	27.19	0.70	1.25
2.	Alcoholic Bev. & Tobacco	0.85	407.50	401.92	379.48	1.39	7.38	0.02	0.10
3.	Clothing & Footwear	8.01	235.24	233.53	200.25	0.73	17.47	0.05	1.23
4.	Housing, Water, Electricity, Gas & Fuels	27.03	246.75	246.77	186.79	-0.01	32.10	0.00	7.09
5.	Furnishing & Household Equip. & Maintenance	4.09	259.61	258.39	237.21	0.47	9.44	0.02	0.40
6.	Health	2.31	251.47	247.37	209.20	1.66	20.21	0.04	0.43
7.	Transport	6.14	307.43	303.14	279.49	1.42	10.00	0.10	0.75
8.	Communication	2.35	138.28	138.28	123.76	0.00	11.73	0.00	0.15
9.	Recreation & Culture	1.73	256.42	255.02	236.46	0.55	8.44	0.01	0.15
10.	Education	4.88	194.55	194.55	171.66	0.00	13.33	0.00	0.49
11.	Restaurants & Hotels	7.41	265.28	263.73	242.65	0.59	9.33	0.05	0.73
12.	Miscellaneous	4.77	281.53	277.61	249.16	1.41	12.99	0.07	0.68

Main contributors to month-on-month and year-on-year percentage changes are given below and detail is given in **Annexure-A**.

1. MONTH-ON-MONTH Top few commodities which varied from previous month are given below:

FOOD

Increased: Tomatoes (75.82%), Fresh Vegetables (29.71%), Milk Powder (17.34%), Pulse Gram (15.35%), Besan (13.31%), Chicken (9.89%), Pulse Moong (8.75%), Wheat Flour (8.23%), Potatoes (7.91%), Gram Whole (6.76%), Milk Fresh (5.31%), Wheat (4.85%), Fresh Fruits (4.41%), Milk Products (3.25%), Wheat Products (2.95%), Honey (2.40%), Pulse Mash (2.28%), Pulse Masoor (2.26%), Pan Prepared (2.09%), Beverages (1.90%), Sugar (1.71%), Eggs (1.60%), Cigarettes (1.25%), Beans (1.13%), Gur (1.04%), Nimco (0.89%), Cooking Oil (0.75%), Condiments and Spices (0.73%), Dry Fruits (0.72%), Readymade Food (0.70%), Rice (0.57%), Meat (0.56%), Butter (0.41%), Mustard Oil (0.33%), Ice Cream (0.30%), Vegetable Ghee (0.24%), Sweetmeat (0.20%) and Dessert Preparation(0.08%).

Decreased: Onions (9.68%), Bakery & Confectionary (1.22%) and Fish (0.19%).

NON-FOOD:

Increased: Liquified Hydrocarbons (18.29%), Hospitals Services (4.01%), Hosiry (3.31%), Motor Fuel (2.65%), Construcion Input Items (2.29%), Major Tools & Equipments (1.99%) and Motor Vehicle Accessories (1.71%).

Decreased: Electricity Charges (4.19%) and Transport Services (0.79%).

YEAR-ON-YEAR: Top few commodities which varied from corresponding month of previous year i.e. **July, 2023** are given below:

FOOD

Increased: Tomatoes (121.81%), Onions (83.25%), Pulse Gram (39.17%), Milk Powder (30.70%), Fresh Vegetables (30.11%), Fish (29.97%), Beans (29.02%), Besan (26.40%), Pulse Moong (24.36%), Pulse Mash (23.17%), Dry Fruits (21.76%), Condiments and Spices (20.5%), Meat (19.54%), Pulse Masoor (17.84%), Beverages (16.96%), Sweetmeat (14.04%), Pan Prepared (13.37%), Butter (10.42%), Milk Fresh (10.41%), Fresh Fruits (10.33%) and Milk Products (10.33%).

Decreased: Wheat (34.54%), Wheat Flour (32.27%), Cooking Oil (15.47%), Chicken (10.91%), Vegetable Ghee (10.65%), Mustard Oil (9.04%), Rice (4.52%), Wheat Products (3.84%) and Tea (2.72%).

NON-FOOD:

Increased: Gas Charges (318.74%), Dental Services (30.22%), Transport Services (29.08%), Liquified Hydrocarbons (27.38%), Cotton Cloth (24.61%), Drugs and Medicines (23.51%), Woolen Readymade Garments (23.44%), Marriage Hall Charges (21.78%), Hospitals Services (19.71%), Footware (19.63%), Garbage Collection (19.26%) and Furniture & Furnishing (18.33%).

III. Rural Consumer Price Index (RCPI)

The Rural Consumer Price Index for July 2024 is increased to 2.20% over June 2024 and increased to 8.14% over corresponding month of the last year i.e. July 2023.

Table 3: Consumer Price Index (Rural) by Group of Commodities and Services (Base 2015-16)

No	Group	Group Weight (%)	Indices			% Change July 2024 Over		Impact (In % points) July 2024 Over	
			July 24	June 24	July 23	June 24	July 23	June 24	July 23
	General	100.00	265.43	259.72	245.44	2.20	8.14	2.20	8.14
1.	Food & Non-alcoholic Bev.	40.87	277.35	266.75	276.60	3.97	0.27	1.67	0.13
	<i>Non-perishable Food Items</i>	<i>35.08</i>	<i>273.28</i>	<i>265.67</i>	<i>284.39</i>	<i>2.86</i>	<i>-3.91</i>	<i>1.03</i>	<i>-1.59</i>
	<i>Perishable Food Items</i>	<i>5.79</i>	<i>302.01</i>	<i>273.25</i>	<i>229.36</i>	<i>10.53</i>	<i>31.68</i>	<i>0.64</i>	<i>1.71</i>
2.	Alcoholic Bev. & Tobacco	1.28	359.15	352.81	336.70	1.80	6.67	0.03	0.12
3.	Clothing & Footwear	9.48	254.73	252.06	214.00	1.06	19.03	0.10	1.57
4.	Housing, Water, Electricity, Gas & Fuels	18.49	226.09	225.54	202.83	0.24	11.47	0.04	1.75
5.	Furnishing & Household Equip. & Maintenance	4.10	285.06	283.21	251.46	0.65	13.36	0.03	0.56
6.	Health	3.51	245.51	241.78	207.96	1.54	18.06	0.05	0.54
7.	Transport	5.56	321.06	316.71	277.13	1.37	15.85	0.09	0.99
8.	Communication	1.99	128.09	127.84	110.03	0.20	16.41	0.00	0.15
9.	Recreation & Culture	1.38	297.11	295.53	262.18	0.53	13.32	0.01	0.20
10.	Education	2.13	217.63	216.95	174.37	0.31	24.81	0.01	0.38
11.	Restaurants & Hotels	6.19	276.60	271.58	241.48	1.85	14.54	0.12	0.89
12.	Miscellaneous	5.02	298.25	295.45	255.32	0.95	16.81	0.05	0.88

Main contributors to Month-on-Month and Year-on-Year percentage changes are given below and detail is given in **Annexure-B**.

1. MONTH-ON-MONTH Top few commodities which varied from previous month are given below:

FOOD

Increased: Tomatoes (103.81%), Milk Powder (21.19%), Pulse Gram (13.69%), Fresh Vegetables (11.35%), Besan (11.11%), Pulse Moong (8.55%), Wheat Flour (8.51%), Wheat (6.72%), Potatoes (6.32%), Gram Whole (6.22%), Fresh Fruits (5.30%), Chicken (4.16%), Pulse Mash (2.54%), Pulse Masoor (2.45%), Milk Fresh (2.45%), Cooking Oil (1.85%), Rice (1.81%), Cigarettes (1.80%), Sugar (1.72%), Pan Prepared (1.62%), Condiments & Spices (1.46%) and Mustard Oil (1.38%).

Decreased: Onions (10.82%) and Eggs (1.04%).

NON-FOOD

Increased: Liquefied Hydrocarbons (6.98%), Construction Input Items (6.50%), Marriage Hall Charges (4.30%), Mechanical Services (3.12%), Cotton Cloth (2.79%), Motor Fuels (2.72%), Furniture and Furnishing (2.42%), Doctor Clinic Fee (2.19%), Drugs & Medicines (1.58%) and Construction Wage Rates (1.48%).

Decreased: Electricity Charges (4.19%) and Transport Services (0.52%).

YEAR-ON-YEAR: Top few commodities which varied from corresponding month of previous year i.e. July, 2023 are given below:

FOOD

Increased: Tomatoes (143.46%), Onions (112.03%), Milk Powder (38.41%), Beans (36.04%), Pulse Gram (32.9%), Pulse Moong (27.97%), Fresh Vegetables (26.11%), Fish (23.98%), Butter (23.83%), Pulse Mash (21.50%), Meat (20.42%), Pulse Masoor (18.87%), Beverages (17.96%), Pan Prepared (17.26%), Dry Fruits (17.08%) and Besan (17.01%).

Decreased: Wheat (32.54%), Wheat Flour (30.88%), Chicken (15.00%), Cooking Oil (10.88%), Vegetable Ghee (9.91%), Mustard Oil (6.65%), Wheat Products (3.37%), Tea (0.59%) and Rice (0.07%).

NON-FOOD

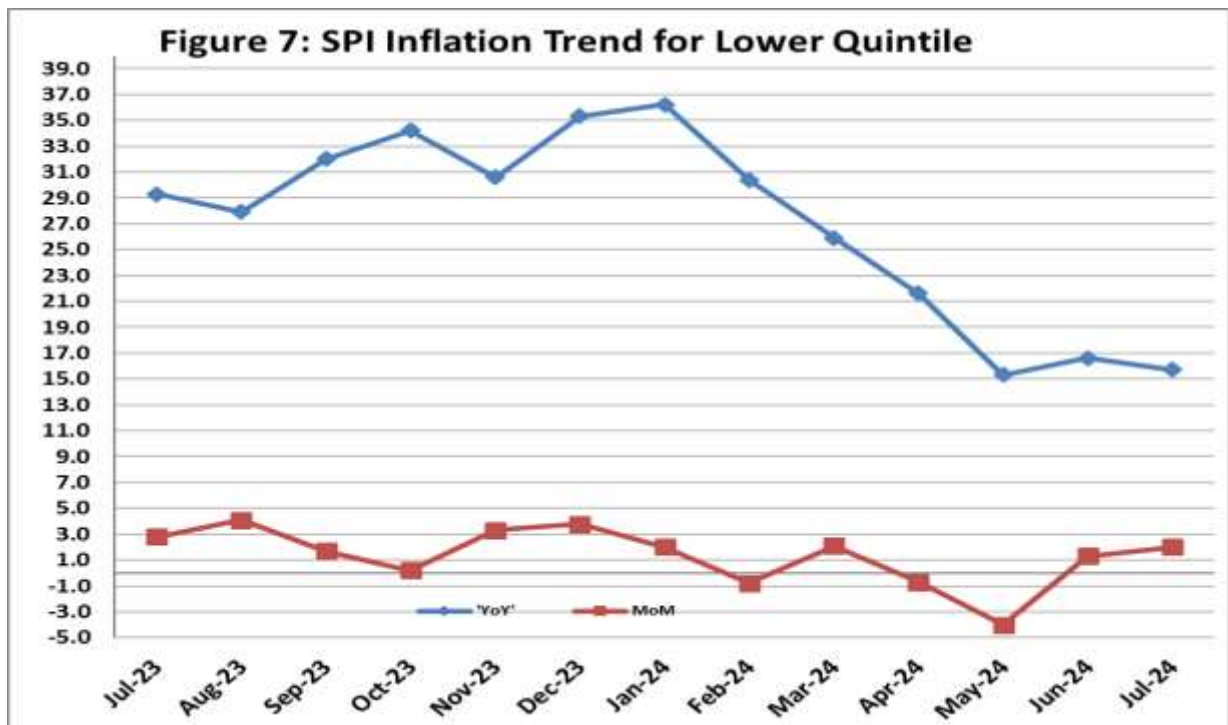
Increased: Transport Services (46.65%), Woolen Readymade Garments (38.42%), Water Supply (31.76%), Education (24.81%), Furniture and Furnishing (23.11%), Marriage Hall Charges (22.87%), Cotton Cloth (22.36%), Liquefied Hydrocarbons (22.27%), Drugs and Medicines (21.95%), Postal Services (20.00%), Footwear (19.22%), Appliances/Articles/Products for Personal Care (19.19%), Woolen Cloth (18.88%), Communication Services (18.7%) and Hosiry (17.69%).

IV. Sensitive Price Indicator

Quintile-wise percentage changes YoY and MoM are given below in Table 4. The series from July 2023 to July 2024 is also graphed below in Figure 7.

Table 4: Sensitive Price Indicator (Base 2015-16)					
Quintiles	Indices			% Change July 2024 Over	
	July 2024	June 2024	July 2023	June 2024	July 2023
1	311.30	305.10	268.96	2.03	15.74
2	310.48	303.94	258.71	2.15	20.01
3	330.73	324.25	263.69	2.00	25.42
4	318.56	312.19	258.89	2.04	23.05
5	319.20	312.79	263.63	2.05	21.08
Combined	320.12	313.63	260.33	2.07	22.97

Table 4.1: Weekly Percentage Change of SPI During July 2024				
Quintiles	% Change with Previous week			
	04-07-2024	11-07-2024	18-07-2024	25-07-2024
Quintile 1	1.43	-0.17	0.49	0.08
Combined	1.28	0.11	0.76	0.17



V. Wholesale Price Index

The Wholesale Price Index for **July, 2024** increased to **2.28%** over **June, 2024**. It increased to **10.36%** over the corresponding month of the last year i.e. **July, 2023**. YoY and MoM movements, from July, 2023 to July, 2024 are also graphed below in Figure 8.

Table 5: Wholesale Price Index by Group of Commodities (Base 2015-16)

No	Group	Group Weight (%)	Indices			% Change July 2024 Over		Impact (In % points) July 2024 Over	
			July 24	June 24	July 23	June 24	July 23	June 24	July 23
	General	100.00	315.88	308.85	286.23	2.28	10.36	2.28	10.36
1	Agriculture Forestry & Fishery	25.77	285.30	280.57	269.89	1.69	5.71	0.39	1.39
2	Ores/Minerals, Elec., Gas & Water	12.01	371.85	373.04	264.80	-0.32	40.43	-0.05	4.49
3	Food, Beverages, Tobacco, Textiles & Leather Products	31.11	271.64	260.25	255.68	4.38	6.24	1.15	1.74
	i. Food Products, Beverages & Tobacco	20.07	286.48	270.49	271.22	5.91	5.63	1.04	1.07
	ii. Textiles & Apparels	10.33	248.51	245.38	230.83	1.28	7.66	0.10	0.64
	iii. Leather Products	0.71	188.92	186.88	177.88	1.09	6.21	0.00	0.03
4	Other Transportable Goods	22.40	354.38	344.62	333.14	2.83	6.38	0.71	1.66
5	Metal Product, Machinery & Equipment	8.72	388.13	385.61	352.58	0.65	10.08	0.07	1.08

Main contributors to month-on-month and year-on-year percentage changes are given below and detail is given in **Annexure-C**.

1. **MONTH-ON-MONTH:** Top few commodities which varied from previous month are given below:

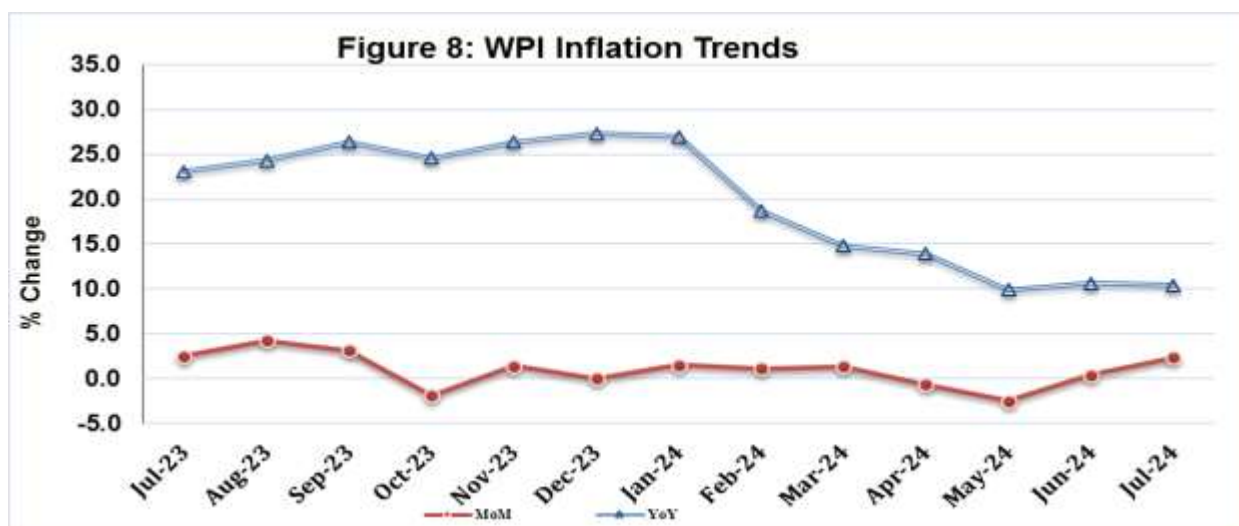
Increased: Vegetables (33.17%), Processed Liquid Milk (22.32%), Coal not Agglomerated (17.1%), Insecticides (15.44%), Cement (15.04%), Dyeing Material (14.30%), Dairy Products (12.62%), Other Cereal Flour (12.42%), Edible Roots / Potatoes (11.85%), Poultry (9.69%), Milk & Cream in Solid Form (9.09%), Wheat Flour (8.28%), Millet / Bajra (8.06%), Tractors (7.64%), Other Fabrics (7.42%), Steel Products (7.14%), Dry Fruits (6.71%), Kerosene Oil (6.45%), Salt & Pure Sodium Chloride (5.80%), Diesel Oil (5.27%), Maize (5.05%), Wheat (4.76%) and Pulses (4.75%).

Decreased: Fibre Crops (5.23%), Electrical Energy (2.82%), Cotton Seeds (2.51%), Sugar Crops (2.32%), Spices (1.24%), Dried Fruits & Nuts (0.42%) and Oil Cakes (0.06%).

YEAR-ON-YEAR: Top few commodities which varied from previous year are given below:

Increased: Natural Gas Liquefied (75.33%), Concrete Mixture (67.20%), Engines & Motors (58.83%), Vegetables (45.20%), Fertilizers (34.59%), Electric Wires (33.27%), Cement (32.95%), Processed Liquid Milk (31.27%), Dairy Products (29.90%), Salt & Pure Sodium Chloride (28.36%), Other Food Products (27.22%), Glass Sheets (27.15%), Coal not Agglomerated (26.11%), Other Cereal Flour (24.92%) and Cultivators (24.50%).

Decreased: Wheat (36.35%), Wheat Flour (29.85%), Stimulant & Spice Crops (20.17%), Printing Paper (13.85%), Maize (13.62%), Millet / Bajra (12.61%), Chemicals (12.57%), Sorghum / Jowar (11.17%), Poultry (10.86%), Vegetable Ghee (10.41%), Other Oil Seeds (8.36%), Cotton Seeds (6.06%), Vegetable Oils Refined (5.73%), Furnace Oil (3.38%) and Air Conditioners (0.78%).



Annexure A:CPI (Urban) Index Numbers by Commodity Groups & Commodities (2015-16=100)

Item and Specification	Weight	Index Numbers			% Change in Jul 2024 over	
		Jul 24	Jun 24	Jul 23	Jun 2024	Jul 2023
General	100.0000	258.59	253.44	228.47	+ 2.03	+ 13.18
Food and non-alcoholic Beverage	30.4215	276.10	262.18	268.74	+ 5.31	+ 2.74
01 Wheat	0.6120	240.17	229.07	366.90	+ 4.85	- 34.54
02 Wheat flour	3.0075	250.19	231.16	369.42	+ 8.23	- 32.27
03 Wheat products	0.0936	295.36	286.91	307.14	+ 2.95	- 3.84
04 Besan	0.0830	260.58	229.97	206.15	+ 13.31	+ 26.40
05 Rice	1.1804	310.37	308.60	325.07	+ 0.57	- 4.52
06 Bakery and confectionary	0.4770	259.67	262.89	252.51	- 1.22	+ 2.84
07 Nimco	0.1224	287.62	285.08	263.10	+ 0.89	+ 9.32
08 Meat	2.0411	309.95	308.21	259.29	+ 0.56	+ 19.54
09 Chicken	1.3631	275.86	251.04	309.64	+ 9.89	- 10.91
10 Fish	0.3855	193.90	194.26	149.19	- 0.19	+ 29.97
11 Milk fresh	7.1070	255.33	242.46	231.26	+ 5.31	+ 10.41
12 Milk products	0.6407	259.85	251.67	235.52	+ 3.25	+ 10.33
13 Milk powder	0.3106	301.19	256.69	230.45	+ 17.34	+ 30.70
14 Eggs	0.5083	292.17	287.57	287.81	+ 1.60	+ 1.51
15 Butter	0.0932	375.60	374.05	340.17	+ 0.41	+ 10.42
16 Mustard oil	0.0120	283.24	282.30	311.40	+ 0.33	- 9.04
17 Cooking oil	1.1016	303.60	301.35	359.18	+ 0.75	- 15.47
18 Vegetable ghee	1.0324	306.02	305.30	342.49	+ 0.24	- 10.65
19 Dry fruits	0.3299	281.92	279.90	231.54	+ 0.72	+ 21.76
20 Fresh fruits	1.4363	248.43	237.93	225.17	+ 4.41	+ 10.33
21 Pulse masoor	0.1624	222.45	217.53	188.78	+ 2.26	+ 17.84
22 Pulse moong	0.1697	205.29	188.78	165.08	+ 8.75	+ 24.36
23 Pulse mash	0.1152	248.23	242.69	201.54	+ 2.28	+ 23.17
24 Pulse gram	0.1660	271.07	234.99	194.78	+ 15.35	+ 39.17
25 Gram whole	0.0912	290.74	272.34	263.83	+ 6.76	+ 10.20
26 Beans	0.0408	373.90	369.74	289.79	+ 1.13	+ 29.02
27 Potatoes	0.4496	385.21	356.98	359.07	+ 7.91	+ 7.28
28 Onions	0.5928	266.97	295.59	145.69	- 9.68	+ 83.25
29 Tomatoes	0.3459	392.30	223.12	176.86	+ 75.82	+ 121.81
30 Fresh vegetables	1.5306	306.29	236.14	235.40	+ 29.71	+ 30.11
31 Sugar	1.1130	233.90	229.96	222.70	+ 1.71	+ 5.03
32 Gur	0.0379	237.74	235.30	227.30	+ 1.04	+ 4.59
33 Honey	0.1017	187.54	183.14	173.00	+ 2.40	+ 8.40
34 Sweetmeat	0.3535	298.83	298.24	262.03	+ 0.20	+ 14.04
35 Ice cream	0.1044	199.33	198.73	196.57	+ 0.30	+ 1.40
36 Condiments and Spices	1.3340	321.67	319.33	266.94	+ 0.73	+ 20.50
37 Dessert preparation	0.0419	264.66	264.46	262.71	+ 0.08	+ 0.74
38 Tea	0.8427	332.73	332.73	342.05	+ 0.00	- 2.72
39 Beverages	0.8906	249.63	244.98	213.44	+ 1.90	+ 16.96
Alcoholic Beverages, Tobacco	0.8540	407.50	401.92	379.48	+ 1.39	+ 7.38
40 Cigarettes	0.7167	407.26	402.22	383.10	+ 1.25	+ 6.31
41 Pan prepared	0.1373	408.73	400.36	360.53	+ 2.09	+ 13.37
Clothing and footwear	8.0096	235.24	233.53	200.25	+ 0.73	+ 17.47
42 Cotton cloth	2.2227	279.49	275.45	224.29	+ 1.47	+ 24.61
43 Woollen cloth	0.8361	224.88	224.68	199.25	+ 0.09	+ 12.86
44 Readymade garments	1.3196	202.48	202.20	184.21	+ 0.14	+ 9.92
45 Woollen readymade garments	0.4307	230.68	230.68	186.87	+ 0.00	+ 23.44
46 Tailoring	1.0741	227.71	226.76	203.45	+ 0.42	+ 11.92
47 Hosiery	0.4070	218.98	211.97	195.30	+ 3.31	+ 12.12
48 Dopatta	0.1713	188.43	187.61	169.31	+ 0.44	+ 11.29
49 Cleaning and laundering	0.0665	255.48	253.83	243.56	+ 0.65	+ 4.89
50 Footwear	1.4816	219.61	219.60	183.58	+ 0.00	+ 19.63
Housing, water, Elec., Gas and Other Fuels	27.0332	246.75	246.77	186.79	- 0.01	+ 32.10
51 House rent	19.2558	164.08	162.50	155.70	+ 0.97	+ 5.38
52 Construction input items	0.3765	265.27	259.33	254.65	+ 2.29	+ 4.17
53 Construction wage rates	0.2025	215.78	214.40	204.06	+ 0.64	+ 5.74
54 Water supply	0.5269	201.12	199.40	175.56	+ 0.86	+ 14.56
55 Garbage collection	0.1064	250.31	249.68	209.88	+ 0.25	+ 19.26
56 Electricity charges	4.5562	304.07	317.36	266.13	- 4.19	+ 14.26
57 Gas charges	1.0807	1479.08	1479.08	353.22	+ 0.00	+ 318.74
58 Liquefied Hydrocarbons	0.5064	325.93	275.54	255.87	+ 18.29	+ 27.38

Annexure A:CPI (Urban) Index Numbers by Commodity Groups & Commodities (2015-16=100)

Item and Specification	Weight	Index Numbers			% Change in Jul 2024 over			
		Jul 24	Jun 24	Jul 23	Jun 2024	Jul 2023		
59 Solid Fuel	0.4218	203.51	202.07	179.19	+	0.71	+	13.57
<i>Furnishing and household equipments</i>	4.0937	259.61	258.39	237.21	+	0.47	+	9.44
60 Furniture and furnishing	0.4750	247.48	245.76	209.14	+	0.70	+	18.33
61 Carpets	0.0308	149.02	148.42	144.90	+	0.40	+	2.84
62 Household textiles	0.3420	185.25	184.36	168.76	+	0.48	+	9.77
63 Household equipments	1.0032	255.56	253.69	240.39	+	0.74	+	6.31
64 Plastic products	0.0536	209.84	206.97	190.70	+	1.39	+	10.04
65 Major tools & equipments	0.0084	230.32	225.82	209.47	+	1.99	+	9.95
66 Washing soap/detergents/match	1.4112	326.67	325.40	296.52	+	0.39	+	10.17
67 Household servant	0.7695	190.67	190.67	179.27	+	0.00	+	6.36
<i>Health</i>	2.3098	251.47	247.37	209.20	+	1.66	+	20.21
68 Drugs and medicines	1.0735	265.47	263.20	214.94	+	0.86	+	23.51
69 Therapeutic Appliances and Equipments	0.0054	150.51	148.33	132.81	+	1.47	+	13.33
70 Doctor (MBBS) clinic fee	0.4044	316.61	311.96	270.51	+	1.49	+	17.04
71 Dental services	0.0156	206.48	204.66	158.56	+	0.89	+	30.22
72 Medical tests	0.2367	194.30	191.91	175.21	+	1.25	+	10.90
73 Hospitals services	0.5742	205.14	197.24	171.37	+	4.01	+	19.71
<i>Transport</i>	6.1368	307.43	303.14	279.49	+	1.42	+	10.00
74 Motor vehicles	0.8097	259.11	257.72	255.47	+	0.54	+	1.42
75 Motor vehicle accessories	0.1941	258.64	254.28	242.59	+	1.71	+	6.62
76 Motor fuel	2.9088	366.26	356.81	347.94	+	2.65	+	5.27
77 Mechanical services	0.4290	222.54	221.38	202.05	+	0.52	+	10.14
78 Motor vehicle tax	0.0482	148.53	148.53	148.53	+	0.00	+	0.00
79 Transport services	1.7470	262.52	264.61	203.38	-	0.79	+	29.08
<i>Communication</i>	2.3536	138.28	138.28	123.76	+	0.00	+	11.73
80 Postal services	0.0190	209.03	209.03	200.76	+	0.00	+	4.12
81 Communication apparatus	0.4524	188.25	188.25	183.90	+	0.00	+	2.37
82 Communication Services	1.8822	125.55	125.55	108.53	+	0.00	+	15.68
<i>Recreation and culture</i>	1.7301	256.42	255.02	236.46	+	0.55	+	8.44
83 Recreation and culture	0.6478	153.19	151.58	146.98	+	1.06	+	4.23
84 Text books	0.6655	332.44	332.02	295.06	+	0.13	+	12.67
85 Newspapers	0.0716	211.87	211.87	209.69	+	0.00	+	1.04
86 stationery	0.3452	312.81	309.65	296.96	+	1.02	+	5.34
<i>Education</i>	4.8807	194.55	194.55	171.66	+	0.00	+	13.33
87 Education	4.8807	194.55	194.55	171.66	+	0.00	+	13.33
<i>Restaurants and hotels</i>	7.4050	265.28	263.73	242.65	+	0.59	+	9.33
88 Readymade food	5.5235	270.11	268.22	254.62	+	0.70	+	6.08
89 Marriage Hall Charges	1.7514	257.27	256.66	211.26	+	0.24	+	21.78
90 Accommodation Services	0.1301	168.37	168.29	157.13	+	0.05	+	7.15
<i>Misc. goods and services</i>	4.7720	281.53	277.61	249.16	+	1.41	+	12.99
91 Personal Grooming Services	0.8001	248.76	247.38	214.08	+	0.56	+	16.20
92 Electrical Appliances for Per	0.0465	162.07	161.93	154.58	+	0.09	+	4.85
93 Appliances/Articles/Products	2.9807	263.26	259.37	236.27	+	1.50	+	11.42
94 Personal Effects n.e.c.	0.9447	372.80	366.45	324.23	+	1.73	+	14.98

Annexure B:CPI (Rural) Index Numbers by Commodity Groups & Commodities (2015-16=100)

Item and Specification	Weight	Index Numbers			% Change in Jul 2024 over			
		Jul 24	Jun 24	Jul 23	Jun 2024	Jul 2023		
General	100.0000	265.43	259.72	245.44	+	2.20	+	8.14
Food and non-alcoholic Beverage	40.8668	277.35	266.75	276.60	+	3.97	+	0.27
01 Wheat	3.4736	241.78	226.56	358.41	+	6.72	-	32.54
02 Wheat Flour	3.4297	251.81	232.06	364.30	+	8.51	-	30.88
03 Wheat Products	0.1068	299.86	298.86	310.32	+	0.33	-	3.37
04 Besan	0.0728	261.32	235.19	223.33	+	11.11	+	17.01
05 Rice	1.5501	417.50	410.09	417.79	+	1.81	-	0.07
06 Bakery and Confectionary	0.3702	304.47	303.79	272.14	+	0.22	+	11.88
07 Nimco	0.0774	297.35	296.04	257.51	+	0.44	+	15.47
08 Meat	1.7146	313.99	311.30	260.75	+	0.86	+	20.42
09 Chicken	1.4641	274.65	263.67	323.13	+	4.16	-	15.00
10 Fish	0.2640	212.73	210.87	171.58	+	0.88	+	23.98
11 Milk fresh	10.3803	249.36	243.39	225.56	+	2.45	+	10.55
12 Milk products	0.9624	248.76	245.80	222.12	+	1.20	+	11.99
13 Milk powder	0.1062	272.34	224.73	196.76	+	21.19	+	38.41
14 Eggs	0.5665	272.92	275.80	272.08	-	1.04	+	0.31
15 Butter	0.3333	277.11	276.99	223.79	+	0.04	+	23.83
16 Mustard oil	0.0136	299.05	294.99	320.35	+	1.38	-	6.65
17 Cooking oil	0.6011	326.07	320.16	365.88	+	1.85	-	10.88
18 Vegetable ghee	2.3764	331.64	329.34	368.11	+	0.70	-	9.91
19 Dry fruits	0.2496	321.48	320.45	274.57	+	0.32	+	17.08
20 Fresh fruits	1.4505	273.48	259.72	244.07	+	5.30	+	12.05
21 Pulse Masoor	0.2076	239.43	233.70	201.42	+	2.45	+	18.87
22 Pulse Moong	0.2510	226.33	208.51	176.86	+	8.55	+	27.97
23 Pulse Mash	0.1465	250.25	244.04	205.96	+	2.54	+	21.50
24 Pulse Gram	0.2751	271.15	238.49	204.02	+	13.69	+	32.90
25 Gram Whole	0.1116	291.51	274.44	272.48	+	6.22	+	6.98
26 Beans	0.0896	403.34	398.02	296.48	+	1.34	+	36.04
27 Potatoes	0.7437	439.45	413.32	388.29	+	6.32	+	13.18
28 Onions	0.8965	261.05	292.72	123.12	-	10.82	+	<u>112.03</u>
29 Tomatoes	0.5069	382.26	187.56	157.01	+	<u>103.81</u>	+	<u>143.46</u>
30 Fresh Vegetables	2.0947	264.85	237.85	210.01	+	11.35	+	26.11
31 Sugar	2.0296	235.35	231.38	222.79	+	1.72	+	5.64
32 Gur	0.1522	246.01	243.05	222.83	+	1.22	+	10.40
33 Honey	0.0296	189.85	189.53	175.02	+	0.17	+	8.47
34 Sweetmeat	0.3967	280.92	280.72	244.53	+	0.07	+	14.88
35 Ice Cream	0.0568	199.34	198.58	192.30	+	0.38	+	3.66
36 Condiments and Spices	1.4919	292.26	288.06	277.54	+	1.46	+	5.30
37 Dessert Preparation	0.0133	268.52	268.52	263.98	+	0.00	+	1.72
38 Tea	1.2566	333.85	333.85	335.84	+	0.00	-	0.59
39 Beverages	0.5537	240.34	238.41	203.74	+	0.81	+	17.96
Alcoholic Beverages, Tobacco	1.2786	359.15	352.81	336.70	+	1.80	+	6.67
40 Cigarettes	1.2364	359.89	353.51	338.37	+	1.80	+	6.36
41 Pan Prepared	0.0422	337.67	332.29	287.97	+	1.62	+	17.26
Clothing and footwear	9.4826	254.73	252.06	214.00	+	1.06	+	19.03
42 Cotton Cloth	2.8381	285.70	277.94	233.50	+	2.79	+	22.36
43 Woollen Cloth	1.0959	248.59	247.23	209.11	+	0.55	+	18.88
44 Readymade Garments	1.1345	224.21	224.05	203.99	+	0.07	+	9.91
45 Woollen Readymade Garments	0.5401	268.35	268.35	193.86	+	0.00	+	38.42
46 Tailoring	1.2999	236.76	236.11	211.45	+	0.28	+	11.97
47 Hosiery	0.4322	333.92	333.53	283.73	+	0.12	+	17.69
48 Dopatta	0.2078	238.22	237.94	199.38	+	0.12	+	19.48
49 Cleaning and Laundering	0.0176	250.05	249.38	240.19	+	0.27	+	4.11
50 Footwear	1.9165	222.76	222.50	186.85	+	0.12	+	19.22
Housing, water, Elec., Gas an	18.4853	226.09	225.54	202.83	+	0.24	+	11.47
51 House Rent	8.6110	170.84	169.03	159.54	+	1.07	+	7.08
52 Construction Input Items	0.6306	245.34	230.37	213.52	+	6.50	+	14.90
53 Construction Wage Rates	0.2526	232.29	228.90	211.22	+	1.48	+	9.98
54 Water Supply	0.0645	292.59	292.34	222.06	+	0.09	+	31.76
55 Garbage Collection	0.0080	190.06	189.52	169.61	+	0.28	+	12.06
56 Electricity Charges	3.4431	304.07	317.36	266.13	-	4.19	+	14.26
57 Liquefied Hydrocarbons	0.9994	303.59	283.78	248.29	+	6.98	+	22.27
58 Solid Fuel	4.4761	251.16	248.84	225.06	+	0.93	+	11.60

Annexure B:CPI (Rural) Index Numbers by Commodity Groups & Commodities (2015-16=100)

Item and Specification	Weight	Index Numbers			% Change in Jul 2024 over			
		Jul 24	Jun 24	Jul 23	Jun 2024	Jul 2023		
<i>Furnishing and household equipments</i>	4.1031	285.06	283.21	251.46	+	0.65	+	13.36
59 Furniture and Furnishing	0.5786	270.69	264.30	219.88	+	2.42	+	23.11
60 Household Textiles	0.4382	223.16	222.60	192.14	+	0.25	+	16.14
61 Household Equipments	1.2774	281.05	278.85	250.69	+	0.79	+	12.11
62 Plastic Products	0.0776	274.62	272.76	233.43	+	0.68	+	17.65
63 Major Tools and Equipments	0.0324	225.90	224.93	206.81	+	0.43	+	9.23
64 Washing Soaps, Detergents and	1.6989	310.55	310.15	279.77	+	0.13	+	11.00
<i>Health</i>	3.5141	245.51	241.78	207.96	+	1.54	+	18.06
65 Drugs and Medicines	1.5792	282.99	278.59	232.06	+	1.58	+	21.95
66 Doctor Clinic Fee	0.5128	287.78	281.61	256.46	+	2.19	+	12.21
67 Dental Services	0.0181	191.38	191.38	183.94	+	0.00	+	4.04
68 Medical Tests	0.3967	218.28	216.18	189.35	+	0.97	+	15.28
69 Hospitals Services	1.0073	176.93	174.78	153.26	+	1.23	+	15.44
<i>Transport</i>	5.5580	321.06	316.71	277.13	+	1.37	+	15.85
70 Motor Vehicles	0.7305	193.06	193.04	190.19	+	0.01	+	1.51
71 Motor Vehicles Accessories	0.1572	263.41	260.92	247.58	+	0.95	+	6.39
72 Motor Fuels	2.4932	368.75	358.98	350.67	+	2.72	+	5.16
73 Mechanical Services	0.3645	228.35	221.45	215.59	+	3.12	+	5.92
74 Motor Vehicle Tax	0.0174	150.93	150.93	150.93	+	0.00	+	0.00
75 Transport Services	1.7952	332.43	334.17	226.68	-	0.52	+	46.65
<i>Communication</i>	1.9940	128.09	127.84	110.03	+	0.20	+	16.41
76 Postal Services	0.0070	179.32	179.32	149.43	+	0.00	+	20.00
77 Communication Apparatus	0.3362	158.13	156.62	145.80	+	0.96	+	8.46
78 Communication Services	1.6508	121.76	121.76	102.58	+	0.00	+	18.70
<i>Recreation and culture</i>	1.3764	297.11	295.53	262.18	+	0.53	+	13.32
79 Recreation and Culture	0.4763	227.82	224.89	210.20	+	1.30	+	8.38
80 Text Books	0.5047	360.44	360.44	311.70	+	0.00	+	15.64
81 Newspapers	0.0230	242.52	242.52	242.52	+	0.00	+	0.00
82 Stationery	0.3724	303.26	301.18	262.77	+	0.69	+	15.41
<i>Education</i>	2.1342	217.63	216.95	174.37	+	0.31	+	24.81
83 Education	2.1342	217.63	216.95	174.37	+	0.31	+	24.81
<i>Restaurants and hotels</i>	6.1895	276.60	271.58	241.48	+	1.85	+	14.54
84 Readymade Food	3.8001	298.43	296.37	268.93	+	0.70	+	10.97
85 Marriage Hall Charges	2.2525	249.69	239.39	203.22	+	4.30	+	22.87
86 Accommodation Services	0.1369	113.40	113.40	108.81	+	0.00	+	4.22
<i>Misc. goods and services</i>	5.0174	298.25	295.45	255.32	+	0.95	+	16.81
87 Personal Grooming Services	1.5363	297.52	297.01	266.79	+	0.17	+	11.52
88 Appliances/Articles/Products	2.2746	249.71	247.71	209.50	+	0.81	+	19.19
89 Personal Effects n.e.c.	1.2065	390.68	383.47	327.10	+	1.88	+	19.44

Annexure C: Wholesale Price Indices by Major Groups & Commodities (2015-16=100)

Item and Specification	Weight	Index Numbers			% Change in Jul 2024 over			
		Jul 24	Jun 24	Jul 23	Jun 2024	Jul 2023		
General	100.0000	315.88	308.85	286.23	+	2.28	+	10.36
Agriculture Forestry & Fisher	25.7674	285.30	280.57	269.89	+	1.69	+	5.71
001 Wheat	0.6297	236.22	225.48	371.13	+	4.76	-	36.35
002 Maize	0.6764	245.47	233.67	284.18	+	5.05	-	13.62
003 Rice	2.4413	344.57	340.82	341.92	+	1.10	+	0.78
004 Sorghum / Jowar	0.0214	287.92	279.65	324.14	+	2.96	-	11.17
005 Millet / Bajra	0.0374	273.50	253.10	312.96	+	8.06	-	12.61
006 Vegetables	1.2441	401.23	301.29	276.33	+	33.17	+	45.20
007 Fresh Fruits	1.5144	264.47	255.29	251.84	+	3.60	+	5.02
008 Dry Fruits	0.2478	352.37	330.22	311.67	+	6.71	+	13.06
009 Cotton Seeds	1.1511	176.96	181.51	188.38	-	2.51	-	6.06
010 Other Oil Seeds	0.0722	278.06	272.93	303.43	+	1.88	-	8.36
011 Edible Roots / Potatoes	0.2540	529.44	473.34	481.03	+	11.85	+	10.06
012 Stimulant & Spice Crops	0.1634	488.62	478.59	612.06	+	2.10	-	20.17
013 Pulses	0.4901	292.19	278.93	252.17	+	4.75	+	15.87
014 Sugar Crops	1.0725	312.10	319.50	289.33	-	2.32	+	7.87
015 Fibre Crops	5.3169	343.07	361.99	326.47	-	5.23	+	5.08
016 Unmanufactured Tobacco	0.0742	583.51	575.04	326.56	+	1.47	+	<u>78.68</u>
017 Poultry	0.5633	265.58	242.12	297.94	+	9.69	-	10.86
018 Raw Milk from Bovine Animals	7.0279	242.17	238.31	218.65	+	1.62	+	10.76
019 Eggs	0.5034	292.19	286.40	292.03	+	2.02	+	0.05
020 Raw Animal Materials / Wool	0.0351	143.62	143.62	137.01	+	0.00	+	4.82
021 Hides, Skins & Fur Skins, Raw	0.4834	55.39	54.38	51.63	+	1.86	+	7.28
022 Fuel Wood in Logs	0.0179	183.92	183.47	175.03	+	0.25	+	5.08
023 Fish Live Fresh or Chilled	1.7295	216.83	216.83	192.81	+	0.00	+	12.46
Ores/Minerals, Elec., Gas & W	12.0069	371.85	373.04	264.80	-	0.32	+	40.43
024 Coal not Agglomerated	0.7508	227.51	194.29	180.41	+	17.10	+	26.11
025 Natural Gas Liquefied	5.7065	418.82	416.35	238.87	+	0.59	+	<u>75.33</u>
026 Salt & Pure Sodium Chloride	0.0584	405.09	382.87	315.59	+	5.80	+	28.36
027 Electrical Energy	5.4912	342.42	352.36	302.75	-	2.82	+	13.10
Food, Beverages, Tobacco, Textil	31.1122	271.64	260.25	255.68	+	4.38	+	6.24
Food Products, Beverages &	20.0718	286.48	270.49	271.22	+	5.91	+	5.63
028 Meat of Animals	3.4559	301.33	300.99	251.03	+	0.11	+	20.04
029 Vegetables & Fruit Juice	0.0058	239.27	239.27	233.14	+	0.00	+	2.63
030 Dried Fruits & Nuts	0.1733	377.98	379.57	330.93	-	0.42	+	14.22
031 Fruit Juices	0.3880	270.25	261.15	233.11	+	3.48	+	15.93
032 Vegetable Oils Refined	1.9242	271.50	271.34	288.01	+	0.06	-	5.73
033 Vegetable Ghee	1.5632	313.17	311.06	349.55	+	0.68	-	10.41
034 Oil Cakes	0.9611	270.56	270.72	249.66	-	0.06	+	8.37
035 Processed Liquid Milk	4.4437	317.05	259.20	241.53	+	22.32	+	31.27
036 Milk & Cream in Solid Form	0.0316	289.50	265.38	248.06	+	9.09	+	16.71
037 Ice Cream	0.0047	200.56	199.18	198.75	+	0.69	+	0.91
038 Dairy Products N.E.C	0.0117	314.86	279.57	242.39	+	12.62	+	29.90
039 Wheat Flour	2.3034	255.75	236.20	364.58	+	8.28	-	29.85
040 Other Cereal Flour	0.0604	277.98	247.28	222.52	+	12.42	+	24.92
041 Sugar Refined	1.7975	239.59	235.63	228.68	+	1.68	+	4.77
042 Chocolate	0.0139	122.88	122.88	102.83	+	0.00	+	19.50
043 Sugar Confectionary	0.0738	236.84	236.84	217.02	+	0.00	+	9.13
044 Coffee & Tea	0.7303	270.04	269.87	251.26	+	0.06	+	7.47
045 Spices	0.1449	331.14	335.29	282.62	-	1.24	+	17.17
046 Other Food Products	0.0336	235.50	235.20	185.11	+	0.13	+	27.22
047 Mineral Water	0.0207	206.39	206.26	200.06	+	0.06	+	3.16
048 Beverages	0.6303	261.21	259.35	234.50	+	0.72	+	11.39
049 Tobacco Products	1.2998	280.52	280.52	259.58	+	0.00	+	8.07
Textiles & Apparels	10.3289	248.51	245.38	230.83	+	1.28	+	7.66
050 Cotton Yarn	5.2491	239.61	239.61	239.61	+	0.00	+	0.00
051 Nylon Yarn	0.1719	95.24	95.24	95.24	+	0.00	+	0.00
052 Blended Yarn	0.1689	148.12	148.12	148.12	+	0.00	+	0.00
053 Woven Fabrics	0.0128	255.78	255.51	221.40	+	0.11	+	15.53
054 Cotton Fabrics	0.6343	335.83	334.78	276.10	+	0.31	+	21.63
055 Other Fabrics	1.1016	256.81	239.08	210.23	+	7.42	+	22.16
056 Silk & Reyon Fabrics	0.7350	384.53	374.41	322.94	+	2.70	+	19.07
057 Towels	0.1235	199.92	197.87	182.13	+	1.04	+	9.77
058 Blankets	0.0029	147.94	147.94	138.45	+	0.00	+	6.85
059 Bed Sheets	0.0913	167.37	167.37	164.56	+	0.00	+	1.71

Annexure C: Wholesale Price Indices by Major Groups & Commodities (2015-16=100)

Item and Specification	Weight	Index Numbers			% Change in Jul 2024 over	
		Jul 24	Jun 24	Jul 23	Jun 2024	Jul 2023
060 Quilts	0.0019	234.52	234.52	203.36	+ 0.00	+ 15.32
061 Woollen Carpets	0.0383	173.86	173.86	166.01	+ 0.00	+ 4.73
062 Synthetic Carpets	0.0566	150.83	150.83	132.43	+ 0.00	+ 13.89
063 Hosiery Products	0.8832	198.12	193.39	183.71	+ 2.45	+ 7.84
064 Readymade Garments	1.0576	240.98	240.76	211.61	+ 0.09	+ 13.88
Leather Products	0.7115	188.92	186.88	177.88	+ 1.09	+ 6.21
065 Leather Without Hair	0.2973	182.58	182.58	169.84	+ 0.00	+ 7.50
066 Other Leather N.E.C	0.2567	164.62	158.95	153.47	+ 3.57	+ 7.27
067 Footwears	0.1575	240.49	240.49	232.83	+ 0.00	+ 3.29
Other Transportable Goods	22.3979	354.38	344.62	333.14	+ 2.83	+ 6.38
068 Timber	0.0165	230.43	229.66	204.20	+ 0.34	+ 12.85
069 Printing Paper	0.4279	224.19	224.19	260.23	+ 0.00	- 13.85
070 Hard Board	0.1579	209.29	209.29	209.29	+ 0.00	+ 0.00
071 Motor Spirit	1.6268	384.07	372.84	365.53	+ 3.01	+ 5.07
072 Diesel Oil	5.4849	354.47	336.73	328.15	+ 5.27	+ 8.02
073 Kerosene Oil	0.2151	358.48	336.77	336.77	+ 6.45	+ 6.45
074 Furnace Oil	3.2664	604.82	604.82	625.99	+ 0.00	- 3.38
075 Mobil Oil	0.7114	238.80	236.05	224.85	+ 1.17	+ 6.20
076 Chemicals	1.7720	274.83	274.52	314.33	+ 0.11	- 12.57
077 Dyeing Material	0.1539	272.52	238.43	220.27	+ 14.30	+ 23.72
078 Fertilizers	2.8657	276.16	270.88	205.19	+ 1.95	+ 34.59
079 Pesticides	0.2763	194.42	190.04	176.78	+ 2.30	+ 9.98
080 Insecticides	0.1276	174.37	151.05	151.05	+ 15.44	+ 15.44
081 Paints & Varnishes	0.1916	271.19	269.25	247.52	+ 0.72	+ 9.56
082 Medicines	1.1428	335.78	335.64	294.99	+ 0.04	+ 13.83
083 Soaps & Detergents	0.8168	230.23	229.00	217.70	+ 0.54	+ 5.76
084 Auto Tyres	0.2703	246.85	246.85	244.38	+ 0.00	+ 1.01
085 Plastic Products	0.4550	195.02	194.82	183.09	+ 0.10	+ 6.52
086 Glass sheets	0.2089	358.40	357.14	281.88	+ 0.35	+ 27.15
087 Other Glass Articles	0.1635	209.73	209.73	200.68	+ 0.00	+ 4.51
088 Ceramics & Sanitary Fixture	0.0244	211.19	209.88	180.18	+ 0.62	+ 17.21
089 Bricks, Blocks & Tiles	0.1566	199.15	192.72	171.94	+ 3.34	+ 15.83
090 Cement	1.8145	288.77	251.02	217.20	+ 15.04	+ 32.95
091 Bed Foam	0.0006	332.36	331.67	297.47	+ 0.21	+ 11.73
092 Matches	0.0505	3323.96	3323.96	3291.67	+ 0.00	+ 0.98
Metal Product, Machinery & Equipments	8.7156	388.13	385.61	352.58	+ 0.65	+ 10.08
093 Steel Bar & Sheets	1.4615	355.04	348.19	352.85	+ 1.97	+ 0.62
094 Pipe Fittings	0.0780	455.71	435.75	403.20	+ 4.58	+ 13.02
095 Steel Products	0.3879	263.05	245.52	225.10	+ 7.14	+ 16.86
096 Engines & Motors	0.0046	186.89	186.89	117.67	+ 0.00	+ <u>58.83</u>
097 Vacuum Pumps	0.0155	107.56	107.56	107.56	+ 0.00	+ 0.00
098 Air Conditioners	0.0049	310.06	310.06	312.51	+ 0.00	- 0.78
099 Cultivators	0.0551	351.39	351.39	282.23	+ 0.00	+ 24.50
100 Chuff Cutter	0.1293	504.72	504.72	504.72	+ 0.00	+ 0.00
101 Tractors	0.0028	320.14	297.43	274.86	+ 7.64	+ 16.47
102 Lathe Machines	0.0525	479.69	472.24	408.48	+ 1.58	+ 17.43
103 Concrete Mixture	0.0107	426.37	426.37	255.01	+ 0.00	+ <u>67.20</u>
104 Fridge,WashM,SewM,Fans,Iron	1.1645	290.99	290.03	252.38	+ 0.33	+ 15.30
105 Electric Wires	0.0912	317.55	311.53	238.27	+ 1.93	+ 33.27
106 Lighting Equipments	1.4431	735.26	734.28	671.98	+ 0.13	+ 9.42
107 Radio & Television	0.1843	196.31	196.31	188.67	+ 0.00	+ 4.05
108 Motor Vehicles	0.0244	256.95	256.95	255.73	+ 0.00	+ 0.48
109 Motorcycles	0.2570	263.76	263.76	260.97	+ 0.00	+ 1.07
110 Bicycles	3.3483	318.93	318.93	279.41	+ 0.00	+ 14.14
