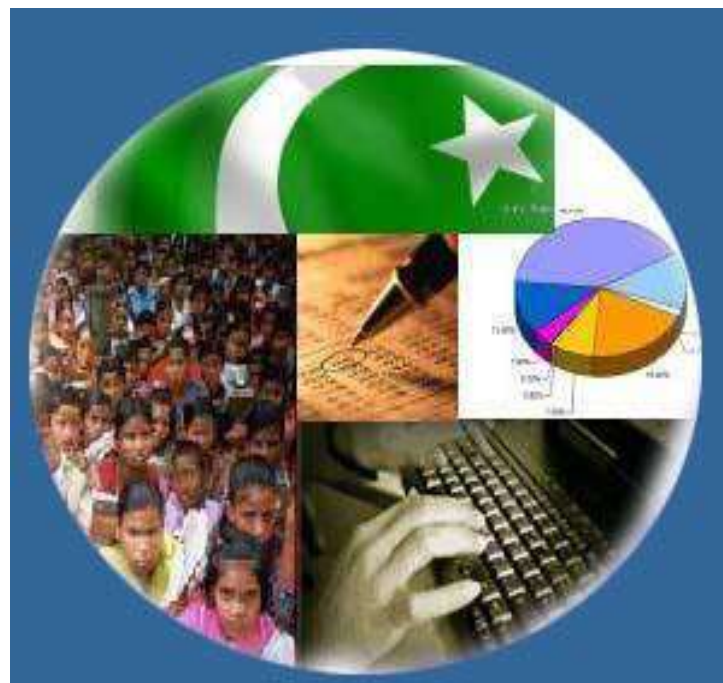




Monthly Review on Price Indices



**January 2024
(Base Year 2015-16)**

**Government of Pakistan
Ministry of Planning, Development & Special Initiatives
Pakistan Bureau of Statistics
Islamabad**

PRICE STATISTICS TEAM

S#	Name	Designation
1.	Dr. Naeem Uz Zafar	Chief Statistician
2.	Syed Ejaz Wasti	Member (National Accounts/Prices)
3.	Dr. Bahrawar Jan	Deputy Director General
4.	Mr. Naseer Ahmad	Director
5.	Dr. Ahtasham Gul	Chief Statistical Officer
6.	Mr. Adnan Shams	Statistical Officer
7.	Mr. Muhammad Mazhar	Statistical Officer
8.	Mr. Kashif Ali	Statistical Officer
9.	Miss. Umaira Zareen	Statistical Officer
10.	Mr. Kashif Yaqoob	Statistical Officer
11.	Mr. Umer Farooq	Statistical Assistant
12.	Mr. Ansar Mahmood	Statistical Assistant
13.	Mrs. Madiha Gulfraz	Statistical Assistant
14.	Mrs. Humail Fatima	Statistical Assistant
15.	Mr. Muhammad Asif	Statistical Assistant

IT & SOFTWARE TEAM

1.	Mr. Muhammad Ehtesham	Director (DP)
2.	Mrs. Sobia Munawar	Director (DP)
3.	Mr. Arsalan Bashir	Data Processing Officer
4.	Mr. Muhammad Kibria	Data Processing Officer
5.	Mr. Muhammad Irfan Bajwa	Data Processing Assistant

Inflation in Brief

- CPI inflation General**, increased to 28.3% on year-on-year basis in January 2024 as compared to an increase of 29.7% in the previous month and 27.6% in January 2023. On month-on-month basis, it increased to 1.8% in January 2024 as compared to an increase of 0.8% in the previous month and an increase of 2.9% in January 2023.
- CPI inflation Urban**, increased to 30.2% on year-on-year basis in January 2024 as compared to an increase of 30.9% in the previous month and 24.4% in January 2023. On month-on-month basis, it increased to 1.8% in January 2024 as compared to an increase of 0.7% in the previous month and an increase of 2.4% in January 2023.
- CPI inflation Rural**, increased to 25.7% on year-on-year basis in January 2024 as compared to an increase of 27.9% in the previous month and 32.3% in January 2023. On month-on-month basis, it increased to 1.9% in January 2024 as compared to an increase of 1.0% in the previous month and an increase of 3.6% in January 2023.
- SPI inflation** on YoY increased to 36.2% in January 2024 as compared to an increase of 35.3% a month earlier and 30.5% in January 2023. On MoM basis, it increased by 2.0% in January 2024 as compared to an increase of 3.8% a month earlier and an increase of 1.3% in January 2023.
- WPI inflation** on YoY basis increased to 27.0% in January 2024 as compared to an increase of 27.3% a month earlier and an increase of 28.5% in January 2023. On MoM basis, it increased by 1.5% in January 2024 as no change observed a month earlier and an increase of 1.8% in corresponding month of last year i.e. January 2023.
- Figures 1 and 2 show graphically the yearly data of Table 1.a for Urban and Rural CPI while Table 1.1 shows "Period Average" and "YoY" percent changes in indices of three years.

Table 1.a General Inflation (%) (Base 2015-16)																		
PERIOD	CPI														SPI**		WPI	
	General						Food				Non-Food							
	National		Urban		Rural		Urban		Rural		Urban		Rural		YoY	MoM	YoY	MoM
YoY	MoM	YoY	MoM	YoY	MoM	YoY	MoM	YoY	MoM	YoY	MoM	YoY	MoM	YoY	MoM	YoY	MoM	
Apr-22	13.4	1.6	12.2	1.6	15.1	1.6	15.6	3.7	17.7	2.8	10.2	0.3	12.8	0.5	14.2	1.5	28.1	3.2
May-22	13.8	0.4	12.4	0.3	15.9	0.6	15.5	1.0	19.0	1.3	10.4	-0.1	13.1	0.0	14.1	0.6	29.6	1.4
Jun-22	21.3	6.3	19.8	6.2	23.6	6.6	24.0	5.3	27.0	6.0	17.3	6.8	20.4	7.1	21.7	6.2	38.9	8.2
Jul-22	24.9	4.3	23.6	4.5	26.9	4.2	27.4	4.3	29.6	3.7	21.3	4.6	24.5	4.6	28.2	7.3	38.5	2.0
Aug-22	27.3	2.4	26.2	2.6	28.8	2.2	28.8	1.6	30.2	1.2	24.7	3.3	27.5	3.1	34.0	5.2	41.2	3.1
Sep-22	23.2	-1.2	21.2	-2.1	26.1	0.2	30.8	5.2	32.7	5.7	15.2	-6.6	20.1	-4.9	28.6	-1.4	38.9	1.4
Oct-22	26.6	4.7	24.6	4.5	29.5	5.0	34.7	4.5	37.2	6.1	18.2	4.5	22.4	3.9	24.0	-1.5	32.6	-0.5
Nov-22	23.8	0.8	21.6	0.4	27.2	1.3	29.7	0.0	33.5	0.5	16.4	0.6	21.4	2.1	27.1	6.1	27.7	0.0
Dec-22	24.5	0.5	21.6	0.3	28.8	0.7	32.7	0.0	37.9	0.1	14.8	0.6	20.7	1.4	27.8	0.2	27.1	-0.7
Jan-23	27.6	2.9	24.4	2.4	32.3	3.6	39.0	3.9	45.2	5.7	15.6	1.2	20.9	1.5	30.5	1.3	28.5	1.8
Feb-23	31.5	4.3	28.8	4.5	35.6	4.0	41.9	4.3	47.0	3.9	20.8	4.7	25.3	4.1	33.6	3.7	36.4	8.2
Mar-23	35.4	3.7	33.0	3.9	38.9	3.5	47.1	5.6	50.2	4.5	24.1	2.7	28.5	2.4	40.4	5.8	37.5	4.7
Apr-23	36.4	2.4	33.5	2.0	40.7	3.0	46.8	3.4	52.2	4.2	24.9	1.0	29.9	1.6	42.1	2.7	33.4	0.1
May-23	38.0	1.6	35.1	1.5	42.2	1.7	48.1	1.9	52.4	1.4	26.6	1.2	32.5	2.0	43.0	1.3	32.8	1.0
Jun-23	29.4	-0.3	27.3	0.1	32.4	-0.8	40.8	0.1	41.5	-1.6	18.7	0.1	23.8	0.1	34.9	0.2	22.4	-0.3
Jul-23	28.3	3.5	26.3	3.6	31.3	3.3	40.2	3.7	41.3	3.5	17.3	3.5	22.0	3.0	29.3	2.8	23.1	2.5
Aug-23	27.4	1.7	25.0	1.6	30.9	1.9	38.8	0.6	40.6	0.8	16.3	2.4	22.0	3.1	27.9	4.1	24.3	4.2
Sep-23	31.4	2.0	29.7	1.7	33.9	2.5	33.9	1.5	35.4	1.8	26.8	1.8	32.3	3.2	32.0	1.7	26.4	3.1
Oct-23	26.8	1.0	25.5	1.1	28.7	0.9	28.9	0.6	28.6	0.7	23.1	1.4	28.8	1.1	34.2	0.2	24.6	-1.9
Nov-23	29.2	2.7	30.4	4.3	27.5	0.4	29.8	0.8	29.2	1.0	30.9	7.0	25.9	-0.2	30.6	3.3	26.4	1.4
Dec-23	29.7	0.8	30.9	0.7	27.9	1.0	28.8	-0.7	29.3	0.1	32.4	1.8	26.4	1.8	35.3	3.8	27.3	0.0
Jan-24	28.3	1.8	30.2	1.8	25.7	1.9	27.4	2.8	25.1	2.3	32.3	1.1	26.3	1.4	36.2	2.0	27.0	1.5

** SPI for quintile 1. Digits 0.0* are due to rounding off.

Core inflation (NFNE)

7. Measured by **non-food non-energy Urban** increased to 17.8% on (YoY) basis in January 2024 as compared to an increase of 18.2% in the previous month and 15.4% in January 2023. On (MoM) basis, it increased by 1.1% in January 2024 as compared to an increase of 0.8% in previous month, and an increase of 1.4% in corresponding month of last year i.e. January, 2023.
8. Measured by **non-food non-energy Rural** increased to 24.6% on (YoY) basis in January 2024 as compared to an increase of 25.1% in the previous month and 19.4% in January 2023. On (MoM) basis, it increased by 1.2% in January 2024 as compared to an increase of 0.9% in previous month, and an increase of 1.5% in corresponding month of last year i.e. January 2023.

Core inflation (Trimmed)

9. Measured by 20% **weighted trimmed mean Urban** increased to 22.1% on (YoY) basis in January 2024 as compared to 23.3% in the previous month and 20.9% in January 2023. On (MoM) basis, it increased by 1.0% in January 2024 as compared to an increase of 0.3% in the previous month and an increase of 1.5% in corresponding month of last year i.e. January 2023.
10. Measured by 20% **weighted trimmed mean Rural** increased to 25.8% on (YoY) basis in January 2024 as compared to 28.0% in the previous month and 27.8% in January 2023. On (MoM) basis, it increased to 1.2% in January 2024 as compared to an increase of 0.7% in the previous month and an increase of 2.1% in corresponding month of last year i.e. January 2023.

Table 1.b Core Inflation (%) (Base 2015-16)

Period	NFNE				Trimmed			
	Urban		Rural		Urban		Rural	
	YoY	MoM	YoY	MoM	YoY	MoM	YoY	MoM
Jan-23	15.4	1.4	19.4	1.5	20.9	1.5	27.8	2.1
Feb-23	17.1	2.2	21.5	2.6	25.1	2.9	31.6	3.9
Mar-23	18.6	2.5	23.1	2.4	28.7	2.7	35.0	2.9
Apr-23	19.5	1.8	24.9	2.7	28.6	1.5	37.3	2.0
May-23	20.0	1.2	26.9	2.5	30.5	1.5	38.8	2.0
Jun-23	18.5	0.7	25.2	0.9	22.9	0.8	29.9	0.1
Jul-23	18.4	1.2	24.6	1.2	21.7	1.9	28.7	2.4
Aug-23	18.4	1.8	25.9	2.8	23.0	1.5	30.5	1.4
Sep-23	18.6	1.0	27.3	2.6	25.0	1.1	33.3	1.7
Oct-23	18.5	1.2	26.7	1.0	24.6	0.6	30.4	0.7
Nov-23	18.6	0.9	25.9	1.4	22.9	0.1	27.9	0.5
Dec-23	18.2	0.8	25.1	0.9	23.3	0.3	28.0	0.7
Jan-24	17.8	1.1	24.6	1.2	22.1	1.0	25.8	1.2

Table 1.1 Period Average and Y-o-Y % Change

INDEX	Average July - January % Changes			January over January % Changes		
	2023-2024	2022-2023	2021-2022	2023-2024	2022-2023	2021-2022
CPI (National)	28.73	25.40	10.26	28.34	27.55	12.96
CPI (Urban)	28.32	23.28	10.51	30.23	24.38	12.99
CPI (Rural)	29.30	28.55	9.92	25.69	32.26	12.93
SPI	32.27	28.56	17.70	36.21	30.54	20.90
WPI	25.60	33.26	21.83	26.95	28.53	23.96

Figure 1: Urban Inflation - YoY, Special Indices

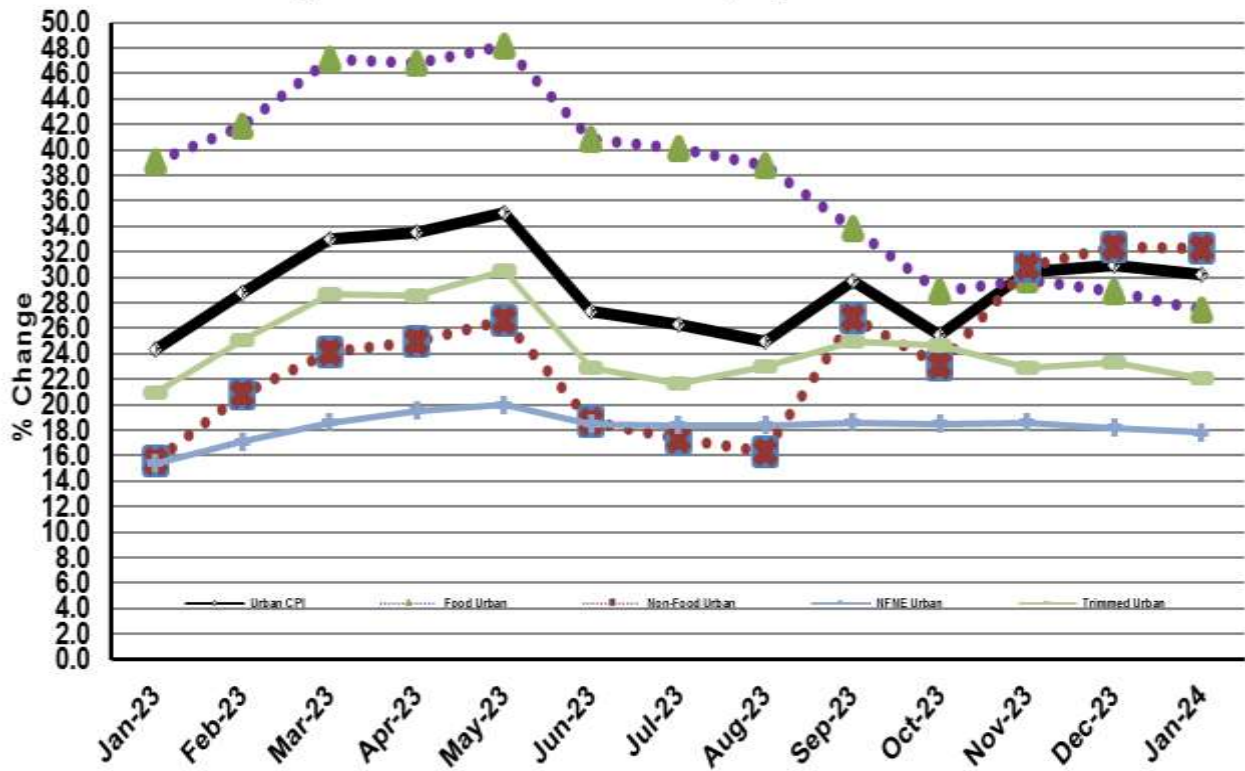


Figure 2: Rural Inflation - YoY, Special Indices

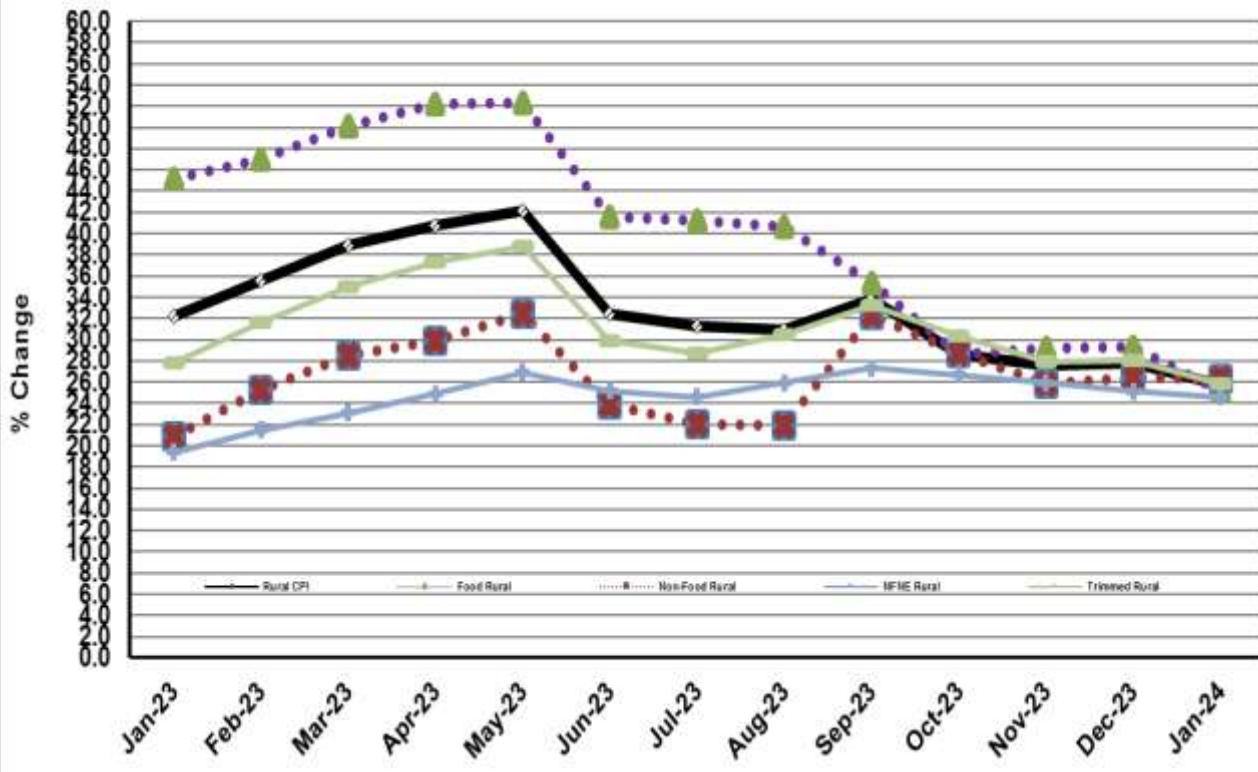


Figure 3: Urban Inflation - MoM, Special Indices

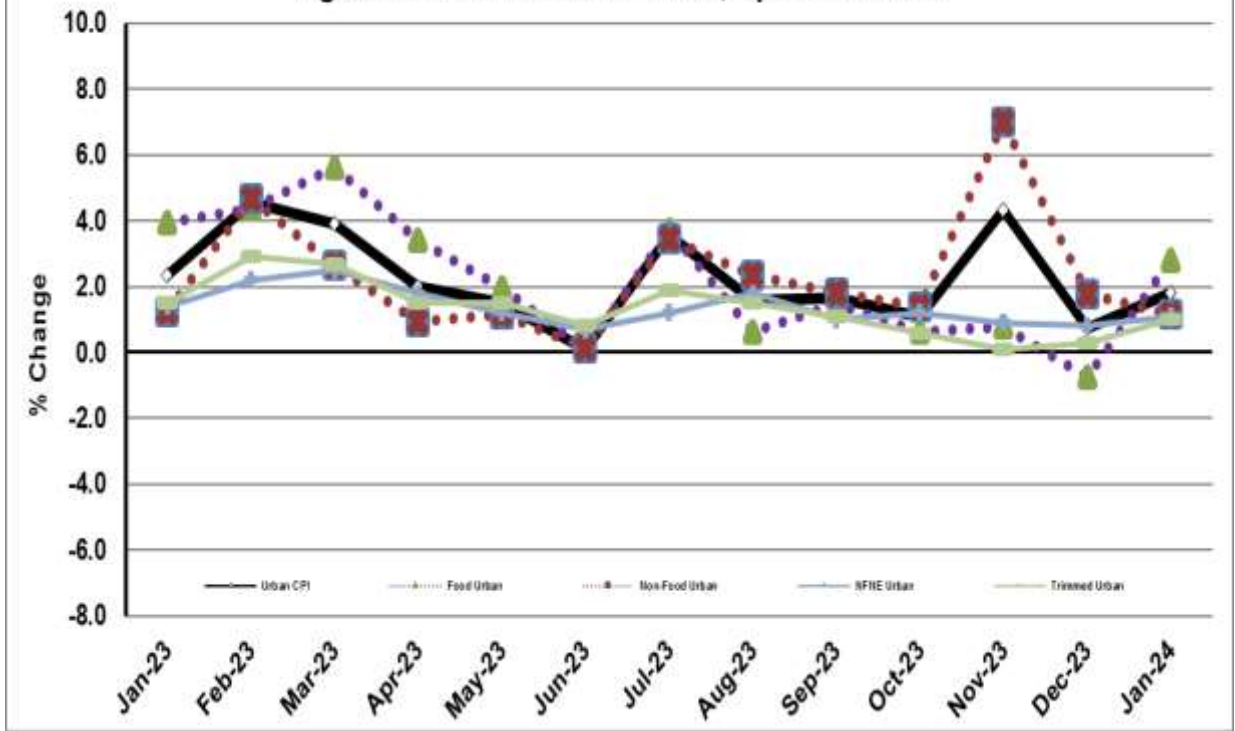


Figure 4: Rural Inflation - MoM, Special Indices

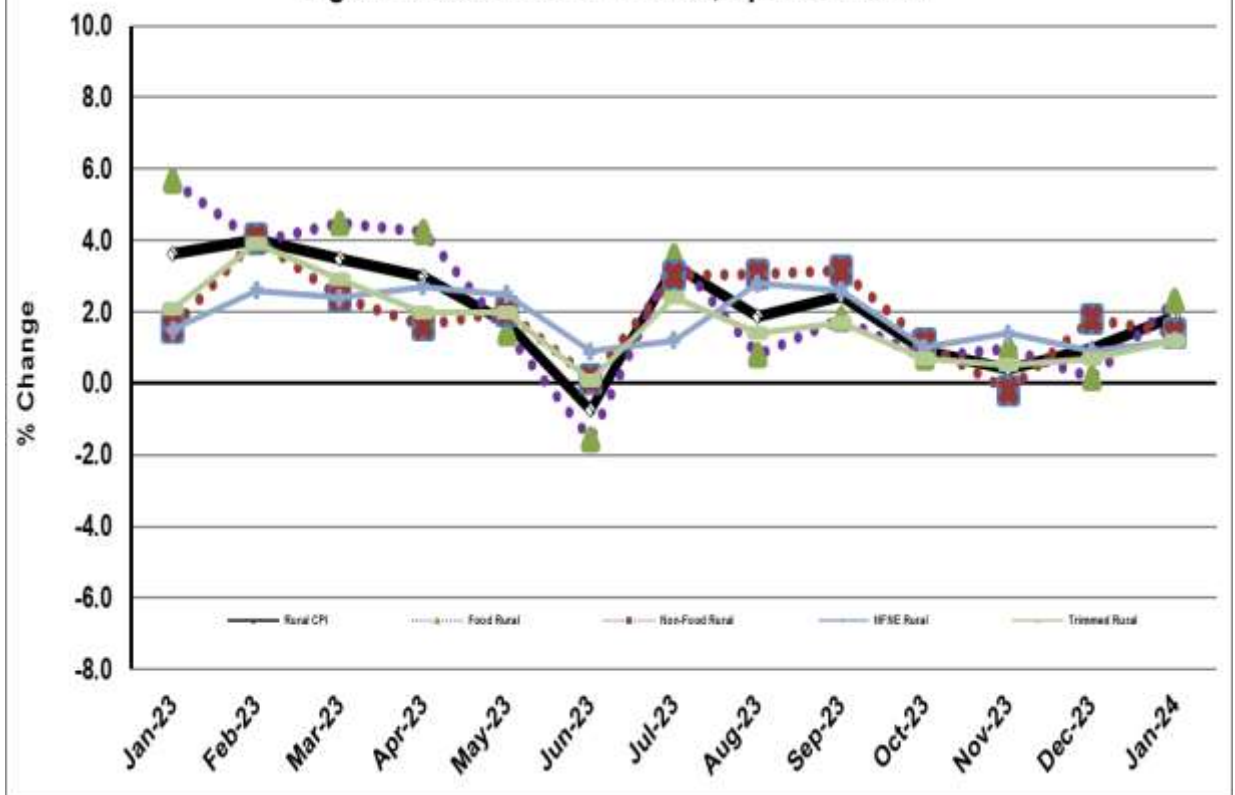


Figure 5: CPI YoY (National, Urban, Rural)

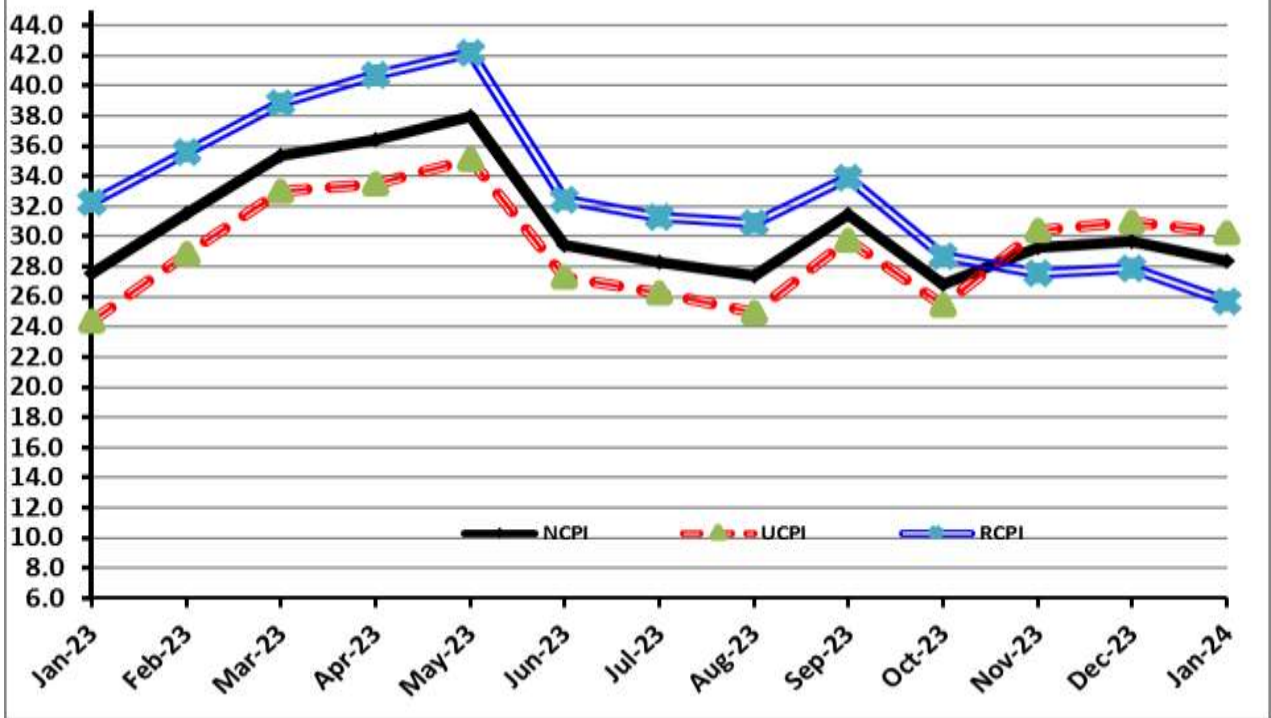
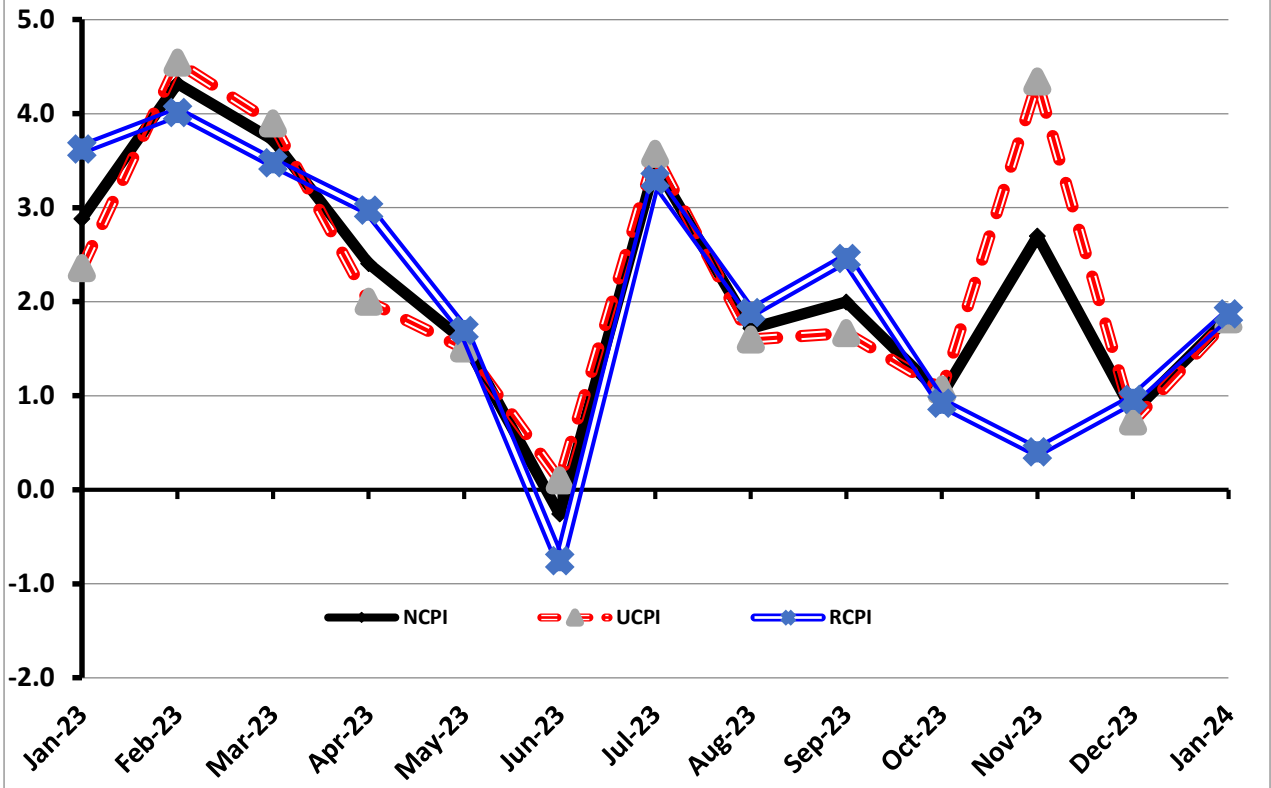


Figure 6: CPI MoM (National, Urban, Rural)



I. National Consumer Price Index (N-CPI)

The **National Consumer Price Index** for **January 2024** is increased to 1.83% over **December 2023** and increased to 28.34% over corresponding month of the last year i.e. **January 2023**.

Table 1: Consumer Price Index (National) by Group of Commodities and Services (Base 2015-16)

No	Group	Group Weight (%)	Indices			% Change Jan 2024 Over		Impact (In % points) Jan 2024 Over	
			Jan 24	Dec 23	Jan 23	Dec 23	Jan 23	Dec 23	Jan 23
	General	100.00	259.92	255.24	202.53	1.83	28.34	1.83	28.34
1.	Food & Non-alcoholic Bev.	34.58	289.77	281.55	231.89	2.92	24.96	1.11	9.88
	<i>Non-perishable Food Items</i>	29.60	289.69	282.99	233.53	2.37	24.04	0.78	8.21
	<i>Perishable Food Items</i>	4.99	290.26	272.99	222.14	6.32	30.66	0.34	1.68
2.	Alcoholic Bev. & Tobacco	1.02	365.13	364.72	199.97	0.11	82.59	0.00	0.83
3.	Clothing & Footwear	8.60	223.28	221.64	184.51	0.74	21.01	0.06	1.65
4.	Housing, Water, Electricity, Gas & Fuels	23.63	236.43	230.62	170.53	2.52	38.65	0.54	7.69
5.	Furnishing & Household Equipment Maintenance	4.10	261.81	260.36	199.56	0.56	31.19	0.02	1.26
6.	Health	2.79	234.60	233.93	193.13	0.28	21.47	0.01	0.57
7.	Transport	5.91	305.48	312.86	242.15	-2.36	26.15	-0.17	1.85
8.	Communication	2.21	134.73	120.20	112.00	12.09	20.29	0.13	0.25
9.	Recreation & Culture	1.59	256.41	256.21	193.40	0.08	32.58	0.00	0.49
10.	Education	3.79	186.15	186.04	164.05	0.06	13.47	0.00	0.41
11.	Restaurants & Hotels	6.92	263.45	260.16	205.28	1.26	28.34	0.09	1.99
12.	Miscellaneous	4.87	272.50	269.77	211.48	1.01	28.85	0.05	1.47

II. Urban Consumer Price Index (UCPI)

The Urban Consumer Price Index for **January 2024** is increased to 1.81% over **December 2023** and increased to 30.23% over corresponding month of the last year i.e. **January 2023**.

Table 2: Consumer Price Index (Urban) by Group of Commodities and Services (Base 2015-16)

No	Group	Group Weight (%)	Indices			% Change Jan 2024 Over		Impact (In % points) Jan 2024 Over	
			Jan 24	Dec 23	Jan 23	Dec 23	Jan 23	Dec 23	Jan 23
	General	100.00	255.22	250.68	195.97	1.81	30.23	1.81	30.23
1.	Food & Non-alcoholic Bev.	30.42	284.23	275.22	224.73	3.27	26.48	1.09	9.24
	<i>Non-perishable Food Items</i>	25.97	284.49	277.10	225.83	2.67	25.98	0.77	7.77
	<i>Perishable Food Items</i>	4.46	282.73	264.26	218.36	6.99	29.48	0.33	1.46
2.	Alcoholic Bev. & Tobacco	0.85	385.76	385.43	213.22	0.09	80.92	0.00	0.75
3.	Clothing & Footwear	8.01	213.55	212.48	181.13	0.50	17.90	0.03	1.33
4.	Housing, Water, Electricity, Gas & Fuels	27.03	241.33	236.27	164.86	2.14	46.38	0.55	10.55
5.	Furnishing & Household Equip. & Maintenance	4.09	253.34	252.29	196.16	0.42	29.15	0.02	1.19
6.	Health	2.31	234.72	234.20	190.17	0.22	23.43	0.00	0.53
7.	Transport	6.14	300.26	305.96	242.19	-1.86	23.98	-0.14	1.82
8.	Communication	2.35	138.73	125.01	114.53	10.98	21.13	0.13	0.29
9.	Recreation & Culture	1.73	246.06	245.92	188.05	0.06	30.85	0.00	0.51
10.	Education	4.88	187.42	187.28	166.36	0.07	12.66	0.00	0.52
11.	Restaurants & Hotels	7.41	262.77	260.11	207.39	1.02	26.70	0.08	2.09
12.	Miscellaneous	4.77	267.64	265.25	209.39	0.90	27.82	0.05	1.42

Main contributors to month-on-month and year-on-year percentage changes are given below and detail is given in **Annexure-A**.

1. MONTH-ON-MONTH Top few commodities which varied from previous month are given below:

FOOD

Increased: Chicken (31.44%), Tomatoes (28.28%), Onions (27.87%), Eggs (17.22%), Fresh Vegetables (8.31%), Pulse Gram (7.63%), Fish (5.47%), Tea (4.93%), Dry Fruits (4.14%), Fresh Fruits (3.64%), Pulse Moong (3.26%), Gur (3.01%), Sugar (2.89%), Besan (2.62%) and Meat (1.87%).

Decreased: Potatoes (32.09%), Cooking Oil (1.34%), Vegetable Ghee (1.09%) and Mustard Oil (0.18%).

NON-FOOD:

Increased: Communication Services (15.68%), Woolen Readymade Garments (6.84%), Electricity Charges (6.45%), Liquefied Hydrocarbons (2.53%), Marriage Hall Charges (2.35%), Personal Grooming Services (2.27%), Solid Fuel (1.94%), Garbage Collection (1.63%) and Furniture & Furnishing (1.49%).

Decreased: Motor Fuel (3.48%), Construcion Input Items (0.36%), Motor Vehicles (0.02%) and Motor Vehicle Accessories (0.02%).

YEAR-ON-YEAR: Top few commodities which varied from corresponding month of previous year i.e. January, 2023 are given below:

FOOD

Increased: Tomatoes (154.41%), Cigarettes (98.02%), Fresh Vegetables (79.74%), Condiments and Spices (61.92%), Sugar (54.65%), Beans (52.45%), Gur (49.73%), Beverages (45.39%), Tea (43.41%), Eggs (42.39%), Pulse Mash (41.71%), Wheat Flour (40.77%), Potatoes (35.05%), Dry Fruits (31.8%), Sweetmeat (29.91%), Dessert Preparation (29.48%), Milk Powder (29.01%), Rice (28.53%), Pulse Masoor (27.98%), Pan Prepared (25.41%), Readymade Food (24.63%) and Wheat Products (24.62%).

Decreased: Mustard Oil (5.38%), Onions (4.11%) and Vegetable Ghee (1.05%).

NON-FOOD:

Increased: Gas Charges (519.61%), Electricity Charges (70.55%), Transport Services (41.03%), Stationery (41.01%), Communication Apparatus (39.72%), Text Books (36.97%), Household Equipments (35.95%), Washing Soap/Detergents/Match Box (35.2%), Marriage Hall Charges (34.16%), Newspapers (34.15%), Accommodation Services (30.07%), Cotton Cloth (29.01%), Furniture and Furnishing (28.19%), Liquefied Hydrocarbons (27.56%), Drugs and Medicines (27.45%), Plastic Products (25.26%) and Hospitals Services (23.79%).

III. Rural Consumer Price Index (RCPI)

The Rural Consumer Price Index for January 2024 is increased to 1.87% over December 2023 and increased to 25.69% over corresponding month of the last year i.e. January 2023.

Table 3: Consumer Price Index (Rural) by Group of Commodities and Services (Base 2015-16)

No	Group	Group Weight (%)	Indices			% Change Jan 2024 Over		Impact (In % points) Jan 2024 Over	
			Jan 24	Dec 23	Jan 23	Dec 23	Jan 23	Dec 23	Jan 23
	General	100.00	267.01	262.11	212.43	1.87	25.69	1.87	25.69
1.	Food & Non-alcoholic Bev.	40.87	295.99	288.66	239.93	2.54	23.37	1.14	10.78
	<i>Non-perishable Food Items</i>	<i>35.08</i>	295.49	289.57	242.14	2.04	22.03	0.79	8.81
	<i>Perishable Food Items</i>	<i>5.79</i>	299.00	283.14	226.53	5.60	31.99	0.35	1.97
2.	Alcoholic Bev. & Tobacco	1.28	344.33	343.84	186.61	0.14	84.52	0.00	0.95
3.	Clothing & Footwear	9.48	235.68	233.32	188.83	1.01	24.81	0.09	2.09
4.	Housing, Water, Electricity, Gas & Fuels	18.49	225.61	218.16	183.03	3.41	23.26	0.53	3.71
5.	Furnishing & Household Equip. & Maintenance	4.10	274.56	272.51	204.69	0.75	34.13	0.03	1.35
6.	Health	3.51	234.48	233.67	196.06	0.35	19.60	0.01	0.64
7.	Transport	5.56	314.18	324.36	242.09	-3.14	29.78	-0.22	1.89
8.	Communication	1.99	127.60	111.63	107.50	14.31	18.70	0.12	0.19
9.	Recreation & Culture	1.38	276.05	275.74	203.54	0.11	35.62	0.00	0.47
10.	Education	2.13	181.78	181.78	156.09	0.00	16.46	0.00	0.26
11.	Restaurants & Hotels	6.19	264.69	260.26	201.46	1.70	31.39	0.10	1.84
12.	Miscellaneous	5.02	279.48	276.26	214.48	1.17	30.31	0.06	1.54

Main contributors to Month-on-Month and Year-on-Year percentage changes are given below and detail is given in **Annexure-B**.

1. MONTH-ON-MONTH Top few commodities which varied from previous month are given below:

FOOD

Increased: Onions (31.01%), Chicken (25.02%), Tomatoes (24.12%), Eggs (19.81%), Fresh Vegetables (8.08%), Pulse Gram (6.56%), Gur (5.57%), Fish (3.84%), Pulse Moong (3.54%), Fresh Fruits (2.8%), Sugar (2.5%), Pulse Masoor (2.21%), Pulse Mash (1.84%), Gram Whole (1.75%) and Wheat (1.59%).

Decreased: Potatoes (32.86%), Cooking Oil (0.85%) and Vegetable Ghee (0.58%).

NON-FOOD

Increased: Communication Services (18.7%), Electricity Charges (6.45%), Marriage Hall Charges (4.08%), Woolen Readymade Garments (3.91%), Liquified Hydrocarbons (3.57%), Dopatta (2.87%), Solid Fuel (2.52%) and House Rent (2.4%).

Decreased: Transport Services (3.71%), Motor Fuels (3.66%) and Construction Input Items (0.52%).

YEAR-ON-YEAR: Top few commodities which varied from corresponding month of previous year i.e. January, 2023 are given below:

FOOD

Increased: Tomatoes (125.07%), Cigarettes (87.33%), Fresh Vegetables (85.77%), Sugar (55.52%), Gur (51.1%), Beans (50.55%), Tea (48.14%), Pulse Mash (45.12%), Beverages (44.81%), Eggs (44.81%), Potatoes (41.36%), Wheat Flour (41.17%), Dessert Preparation (38.36%), Rice (34.82%), Readymade Food (28.9%), Milk Products (28.83%).

Decreased: Onions (11.99%), Cooking Oil (6.97%), Vegetable Ghee (4.56%) and Mustard Oil (4.42%).

NON-FOOD

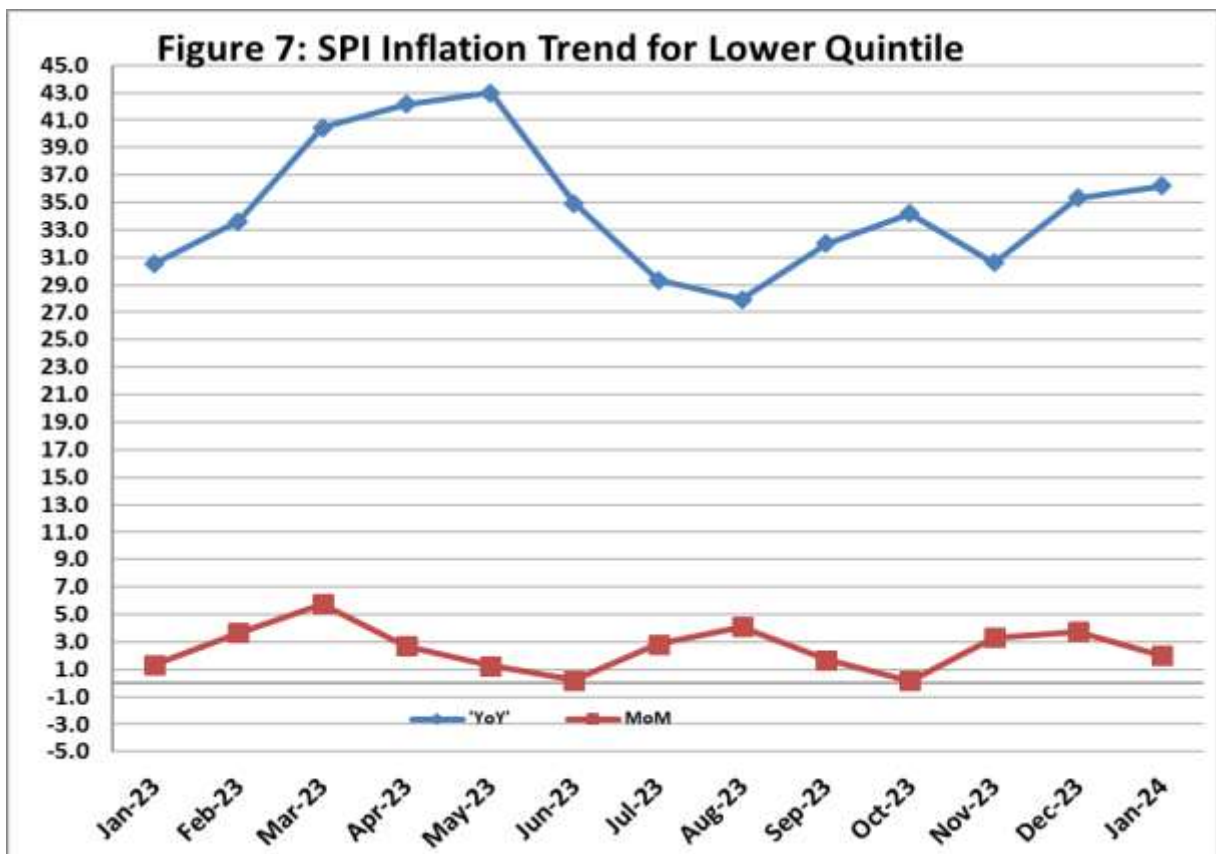
Increased: Electricity Charges (70.55%), Text Books (56.92%), Transport Services (53.84%), Newspapers (46.34%), Appliances/Articles/Products for Personal Care (43.52%), Washing Soaps, Detergents and Match Box (38.82%), Woolen Readymade Garments (38.62%), Marriage Hall Charges (38.17%), Stationery (34.9%), Household Equipments (34.18%), Water Supply (31.65%) and Furniture and Furnishing (30.08%).

IV. Sensitive Price Indicator

Quintile-wise percentage changes YoY and MoM are given below in Table 4. The series from Jan 2023 to Jan 2024 is also graphed below in Figure 7.

Table 4: Sensitive Price Indicator (Base 2015-16)					
Quintiles	Indices			% Change Jan 2024 Over	
	Jan 24	Dec 23	Jan 23	Dec 23	Jan 23
1	311.93	305.76	229.00	2.02	36.21
2	309.08	302.61	218.75	2.14	41.29
3	328.24	321.75	222.62	2.02	47.44
4	317.09	310.79	218.97	2.03	44.81
5	316.56	310.73	222.60	1.88	42.21
Combined	317.23	311.06	220.51	1.98	43.86

Table 4.1: Weekly Percentage Change of SPI During January 2024				
Quintiles	% Change with Previous week			
	04-01-2024	11-01-2024	18-01-2024	25-01-2024
Quintile 1	0.81	1.20	0.61	-0.33
Combined	0.81	1.36	0.34	-0.14



V. Wholesale Price Index

The Wholesale Price Index for **January, 2024** increased by 1.47% over **December, 2023**. It increased to 26.95% over the corresponding month of the last year i.e. **January, 2023**. YoY and MoM movements, from January, 2023 to January, 2024 are also graphed below in Figure 8.

Table 5: Wholesale Price Index by Group of Commodities (Base 2015-16)

No	Group	Group Weight (%)	Indices			% Change Jan 2024 Over		Impact (In % points) Jan 2024 Over	
			Jan 24	Dec 23	Jan 23	Dec 23	Jan 23	Dec 23	Jan 23
	General	100.00	310.54	306.05	244.61	1.47	26.95	1.47	26.95
1	Agriculture Forestry & Fishery	25.77	285.82	269.72	244.69	5.97	16.81	1.36	4.33
2	Ores/Minerals, Elec., Gas & Water	12.01	381.15	372.58	218.23	2.30	74.66	0.34	8.00
3	Food, Beverages, Tobacco, Textiles & Leather Products	31.11	262.15	260.91	218.37	0.48	20.05	0.13	5.57
	i. Food Products, Beverages & Tobacco	20.07	277.95	276.07	222.37	0.68	24.99	0.12	4.56
	ii. Textiles & Apparels	10.33	236.72	236.63	214.65	0.04	10.28	0.00	0.93
	iii. Leather Products	0.71	185.68	185.68	159.57	0.00	16.36	0.00	0.08
4	Other Transportable Goods	22.40	341.54	347.13	273.01	-1.61	25.10	-0.41	6.28
5	Metal Product, Machinery & Equipment	8.72	379.46	377.32	301.33	0.57	25.93	0.06	2.78

Main contributors to month-on-month and year-on-year percentage changes are given below and detail is given in **Annexure-C**.

1. **MONTH-ON-MONTH:** Top few commodities which varied from previous month are given below:

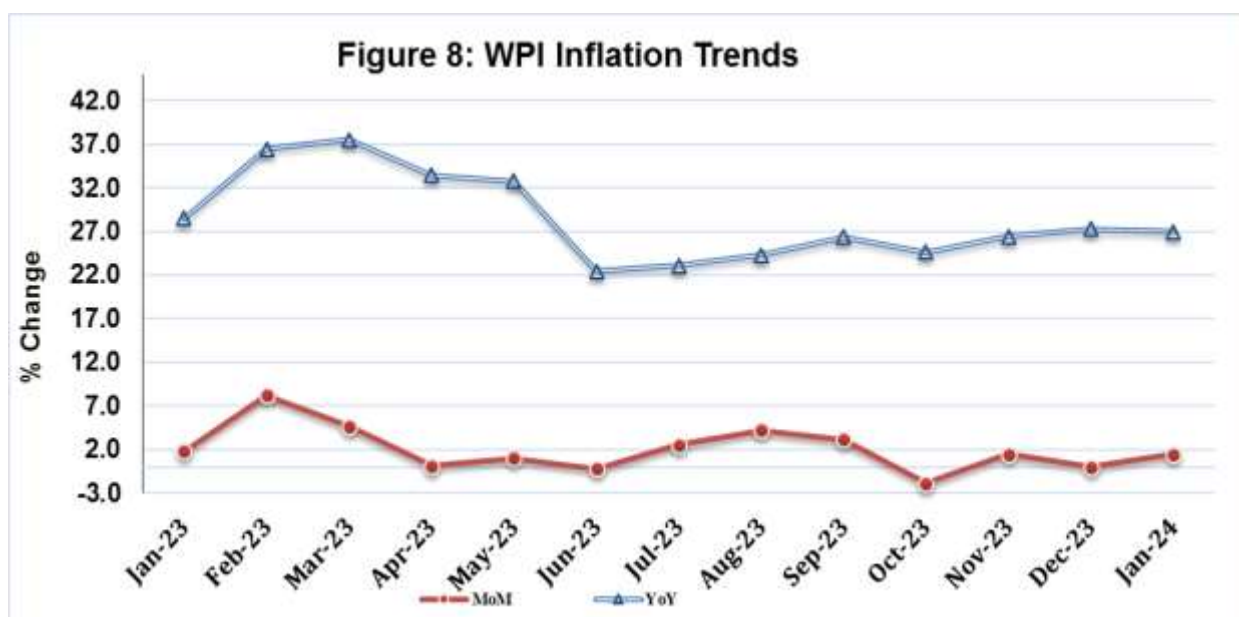
Increased: Poultry (37.43%), Vegetables (20.31%), Eggs (17.12%), Fibre Crops (12.33%), Stimulant & Spice Crops (10.7%), Sugar Crops (9.29%), Fresh Fruits (5.81%), Quilts (5.4%), Electrical Energy (5.34%), Dried Fruits & Nuts (5.16%), Medicines (4.81%), Millet / Bajra (4.7%), Ceramics & Sanitary Fixture (4.41%) and Coffee & Tea (4.28%).

Decreased: Edible Roots / Potatoes (38.01%), Hides, Skins & Fur Skins, Raw (4.64%), Kerosene Oil (4.2%), Motor Spirit (4.12%), Chemicals (2.75%), Diesel Oil (2.71%), Vegetable Ghee (2.23%), Other Oil Seeds (2.17%), Printing Paper (2.17%), Furnace Oil (1.9%) and Vegetable Oils Refined (1.22%).

YEAR-ON-YEAR: Top few commodities which varied from previous year are given below:

Increased: Matches (129.19%), Cultivators (107.27%), Natural Gas Liquefied (103.68%), Unmanufactured Tobacco (95.98%), Tobacco Products (93.57%), Spices (72.65%), Steel Products (70.46%), Salt & Pure Sodium Chloride (67.63%), Air Conditioners (65.69%), Other Food Products (63.2%), Radio & Television (59.11%), Engines & Motors (58.83%), Sugar Refined (58.06%), Vegetables (57.48%), Beverages (54.97%).

Decreased: Maize (14.35%), Other Oil Seeds (12.35%) and Fresh Fruits (7.00%).



Annexure A: CPI (Urban) Index Numbers by Commodity Groups & Commodities (2015-16=100)

Item and Specification	Weight	Index Numbers			% Change in Jan 2024 over			
		Jan 24	Dec 23	Jan 23	Dec 2023	Jan 2023		
General	100.0000	255.22	250.68	195.97	+	1.81	+	30.23
Food and non-alcoholic Beverages	30.4215	284.23	275.22	224.73	+	3.27	+	26.48
01 Wheat	0.6120	365.12	363.38	328.00	+	0.48	+	11.32
02 Wheat flour	3.0075	359.34	358.54	255.27	+	0.22	+	40.77
03 Wheat products	0.0936	324.65	324.07	260.52	+	0.18	+	24.62
04 Besan	0.0830	211.09	205.71	195.25	+	2.62	+	8.11
05 Rice	1.1804	327.22	324.72	254.59	+	0.77	+	28.53
06 Bakery and confectionary	0.4770	267.75	266.15	226.66	+	0.60	+	18.13
07 Nimco	0.1224	281.34	278.99	231.04	+	0.84	+	21.77
08 Meat	2.0411	273.76	268.73	229.07	+	1.87	+	19.51
09 Chicken	1.3631	313.57	238.56	253.96	+	31.44	+	23.47
10 Fish	0.3855	183.05	173.56	147.16	+	5.47	+	24.39
11 Milk fresh	7.1070	236.06	235.89	197.65	+	0.07	+	19.43
12 Milk products	0.6407	244.09	243.98	197.96	+	0.05	+	23.30
13 Milk powder	0.3106	251.56	251.17	194.99	+	0.16	+	29.01
14 Eggs	0.5083	473.47	403.90	332.52	+	17.22	+	42.39
15 Butter	0.0932	349.75	347.56	313.58	+	0.63	+	11.53
16 Mustard oil	0.0120	288.42	288.93	304.81	-	0.18	-	5.38
17 Cooking oil	1.1016	311.76	316.01	306.95	-	1.34	+	1.57
18 Vegetable ghee	1.0324	305.54	308.90	308.77	-	1.09	-	1.05
19 Dry fruits	0.3299	280.41	269.25	212.76	+	4.14	+	31.80
20 Fresh fruits	1.4363	191.69	184.95	188.53	+	3.64	+	1.68
21 Pulse masoor	0.1624	229.26	227.94	179.14	+	0.58	+	27.98
22 Pulse moong	0.1697	181.42	175.69	162.25	+	3.26	+	11.82
23 Pulse mash	0.1152	230.33	227.89	162.54	+	1.07	+	41.71
24 Pulse gram	0.1660	211.23	196.26	194.48	+	7.63	+	8.61
25 Gram whole	0.0912	256.28	253.41	232.94	+	1.13	+	10.02
26 Beans	0.0408	347.47	339.57	227.92	+	2.33	+	<u>52.45</u>
27 Potatoes	0.4496	244.33	359.80	180.92	-	32.09	+	35.05
28 Onions	0.5928	503.91	394.09	525.50	+	27.87	-	4.11
29 Tomatoes	0.3459	307.74	239.90	120.96	+	28.28	+	<u>154.41</u>
30 Fresh vegetables	1.5306	283.99	262.21	158.00	+	8.31	+	<u>79.74</u>
31 Sugar	1.1130	231.86	225.35	149.93	+	2.89	+	<u>54.65</u>
32 Gur	0.0379	236.39	229.48	157.88	+	3.01	+	49.73
33 Honey	0.1017	176.68	174.47	168.16	+	1.27	+	5.07
34 Sweetmeat	0.3535	289.73	287.40	223.02	+	0.81	+	29.91
35 Ice cream	0.1044	198.48	198.48	172.00	+	0.00	+	15.40
36 Condiments and Spices	1.3340	315.19	309.81	194.66	+	1.74	+	<u>61.92</u>
37 Dessert preparation	0.0419	264.27	263.38	204.10	+	0.34	+	29.48
38 Tea	0.8427	361.83	344.84	252.30	+	4.93	+	43.41
39 Beverages	0.8906	238.57	234.84	164.09	+	1.59	+	45.39
Alcoholic Beverages, Tobacco	0.8540	385.76	385.43	213.22	+	0.09	+	<u>80.92</u>
40 Cigarettes	0.7167	384.62	384.62	194.23	+	0.00	+	<u>98.02</u>
41 Pan prepared	0.1373	391.70	389.61	312.34	+	0.54	+	25.41
Clothing and footwear	8.0096	213.55	212.48	181.13	+	0.50	+	<u>17.90</u>
42 Cotton cloth	2.2227	245.13	245.08	190.01	+	0.02	+	29.01
43 Woolen cloth	0.8361	213.22	212.27	178.41	+	0.45	+	19.51
44 Readymade garments	1.3196	193.86	193.76	167.42	+	0.05	+	15.79
45 Woolen readymade garments	0.4307	230.16	215.42	186.86	+	6.84	+	23.17
46 Tailoring	1.0741	208.77	208.52	184.55	+	0.12	+	13.12
47 Hosiery	0.4070	205.32	203.89	176.03	+	0.70	+	16.64
48 Dopatta	0.1713	177.25	176.10	152.87	+	0.65	+	15.95
49 Cleaning and laundering	0.0665	250.04	249.82	213.26	+	0.09	+	17.25
50 Footwear	1.4816	187.35	187.26	180.61	+	0.05	+	3.73
Housing, water, Elec., Gas an	27.0332	241.33	236.27	164.86	+	2.14	+	<u>46.38</u>
51 House rent	19.2558	160.17	157.98	152.02	+	1.39	+	5.36
52 Construction input items	0.3765	258.59	259.53	217.50	-	0.36	+	18.89
53 Construction wage rates	0.2025	212.13	212.02	189.25	+	0.05	+	12.09
54 Water supply	0.5269	199.06	199.06	171.56	+	0.00	+	16.03
55 Garbage collection	0.1064	243.95	240.04	207.65	+	1.63	+	17.48
56 Electricity charges	4.5562	320.26	300.86	187.78	+	6.45	+	<u>70.55</u>
57 Gas charges	1.0807	1344.19	1344.19	216.94	+	0.00	+	<u>519.61</u>
58 Liquefied Hydrocarbons	0.5064	339.32	330.95	266.00	+	2.53	+	27.56

Annexure A: CPI (Urban) Index Numbers by Commodity Groups & Commodities (2015-16=100)

Item and Specification	Weight	Index Numbers			% Change in Jan 2024 over	
		Jan 24	Dec 23	Jan 23	Dec 2023	Jan 2023
59 Solid Fuel	0.4218	201.02	197.20	170.49	+ 1.94	+ 17.91
<i>Furnishing and household equivalent</i>	4.0937	253.34	252.29	196.16	+ 0.42	+ 29.15
60 Furniture and furnishing	0.4750	237.67	234.17	185.41	+ 1.49	+ 28.19
61 Carpets	0.0308	147.94	147.23	132.62	+ 0.48	+ 11.55
62 Household textiles	0.3420	182.37	180.40	160.64	+ 1.09	+ 13.53
63 Household equipments	1.0032	250.74	249.94	184.43	+ 0.32	+ 35.95
64 Plastic products	0.0536	204.11	202.12	162.95	+ 0.98	+ 25.26
65 Major tools & equipments	0.0084	221.17	220.42	179.46	+ 0.34	+ 23.24
66 Washing soap/detergents/match	1.4112	318.08	317.48	235.26	+ 0.19	+ 35.20
67 Household servant	0.7695	187.19	186.99	167.21	+ 0.11	+ 11.95
<i>Health</i>	2.3098	234.72	234.20	190.17	+ 0.22	+ 23.43
68 Drugs and medicines	1.0735	250.58	250.20	196.61	+ 0.15	+ 27.45
69 Therapeutic Appliances and Equivalent	0.0054	147.38	147.02	127.13	+ 0.24	+ 15.93
70 Doctor (MBBS) clinic fee	0.4044	292.60	291.41	248.16	+ 0.41	+ 17.91
71 Dental services	0.0156	176.08	175.02	148.94	+ 0.61	+ 18.22
72 Medical tests	0.2367	184.35	184.16	159.91	+ 0.10	+ 15.28
73 Hospitals services	0.5742	187.50	187.04	151.47	+ 0.25	+ 23.79
<i>Transport</i>	6.1368	300.26	305.96	242.19	- 1.86	+ 23.98
74 Motor vehicles	0.8097	254.51	254.55	209.85	- 0.02	+ 21.28
75 Motor vehicle accessories	0.1941	250.34	250.39	203.23	- 0.02	+ 23.18
76 Motor fuel	2.9088	357.18	370.07	300.29	- 3.48	+ 18.95
77 Mechanical services	0.4290	218.14	217.21	182.74	+ 0.43	+ 19.37
78 Motor vehicle tax	0.0482	148.53	148.53	148.53	+ 0.00	+ 0.00
79 Transport services	1.7470	256.60	255.38	181.95	+ 0.48	+ 41.03
<i>Communication</i>	2.3536	138.73	125.01	114.53	+ 10.98	+ 21.13
80 Postal services	0.0190	207.37	207.37	186.05	+ 0.00	+ 11.46
81 Communication apparatus	0.4524	190.69	190.09	136.48	+ 0.32	+ 39.72
82 Communication Services	1.8822	125.55	108.53	108.53	+ 15.68	+ 15.68
<i>Recreation and culture</i>	1.7301	246.06	245.92	188.05	+ 0.06	+ 30.85
83 Recreation and culture	0.6478	148.69	148.64	134.01	+ 0.03	+ 10.95
84 Text books	0.6655	314.48	314.48	229.60	+ 0.00	+ 36.97
85 Newspapers	0.0716	211.87	211.87	157.93	+ 0.00	+ 34.15
86 stationery	0.3452	304.00	303.40	215.58	+ 0.20	+ 41.01
<i>Education</i>	4.8807	187.42	187.28	166.36	+ 0.07	+ 12.66
87 Education	4.8807	187.42	187.28	166.36	+ 0.07	+ 12.66
<i>Restaurants and hotels</i>	7.4050	262.77	260.11	207.39	+ 1.02	+ 26.70
88 Readymade food	5.5235	269.53	267.78	216.26	+ 0.65	+ 24.63
89 Marriage Hall Charges	1.7514	248.73	243.02	185.40	+ 2.35	+ 34.16
90 Accommodation Services	0.1301	164.52	164.52	126.49	+ 0.00	+ 30.07
<i>Misc. goods and services</i>	4.7720	267.64	265.25	209.39	+ 0.90	+ 27.82
91 Personal Grooming Services	0.8001	234.38	229.18	190.79	+ 2.27	+ 22.85
92 Electrical Appliances for Per	0.0465	161.58	161.44	145.52	+ 0.09	+ 11.04
93 Appliances/Articles/Products	2.9807	254.55	253.33	191.37	+ 0.48	+ 33.01
94 Personal Effects n.e.c.	0.9447	342.32	338.49	285.15	+ 1.13	+ 20.05

Annexure B: CPI (Rural) Index Numbers by Commodity Groups & Commodities (2015-16=100)

Item and Specification	Weight	Index Numbers			% Change in Jan 2024 over			
		Jan 24	Dec 23	Jan 23	Dec 2023	Jan 2023		
General	100.0000	267.01	262.11	212.43	+	1.87	+	25.69
Food and non-alcoholic Beverages	40.8668	295.99	288.66	239.93	+	2.54	+	23.37
01 Wheat	3.4736	373.71	367.85	363.20	+	1.59	+	2.89
02 Wheat Flour	3.4297	369.73	367.12	261.90	+	0.71	+	41.17
03 Wheat Products	0.1068	332.41	331.33	264.14	+	0.33	+	25.85
04 Besan	0.0728	222.59	218.29	214.65	+	1.97	+	3.70
05 Rice	1.5501	433.03	431.11	321.18	+	0.45	+	34.82
06 Bakery and Confectionary	0.3702	302.82	301.62	232.12	+	0.40	+	30.46
07 Nimco	0.0774	288.81	286.67	224.92	+	0.75	+	28.41
08 Meat	1.7146	280.81	279.00	229.78	+	0.65	+	22.21
09 Chicken	1.4641	315.21	252.12	277.86	+	25.02	+	13.44
10 Fish	0.2640	200.51	193.10	163.59	+	3.84	+	22.57
11 Milk fresh	10.3803	235.05	234.51	189.96	+	0.23	+	23.74
12 Milk products	0.9624	235.52	232.69	182.81	+	1.22	+	28.83
13 Milk powder	0.1062	218.27	217.92	172.71	+	0.16	+	26.38
14 Eggs	0.5665	463.97	387.26	320.40	+	19.81	+	44.81
15 Butter	0.3333	250.53	245.11	200.88	+	2.21	+	24.72
16 Mustard oil	0.0136	307.12	305.24	321.31	+	0.62	-	4.42
17 Cooking oil	0.6011	322.66	325.43	346.84	-	0.85	-	6.97
18 Vegetable ghee	2.3764	326.68	328.59	342.29	-	0.58	-	4.56
19 Dry fruits	0.2496	322.88	318.92	253.28	+	1.24	+	27.48
20 Fresh fruits	1.4505	204.63	199.06	187.18	+	2.80	+	9.32
21 Pulse Masoor	0.2076	244.74	239.45	196.86	+	2.21	+	24.32
22 Pulse Moong	0.2510	194.24	187.59	175.81	+	3.54	+	10.48
23 Pulse Mash	0.1465	238.42	234.11	164.29	+	1.84	+	45.12
24 Pulse Gram	0.2751	214.74	201.52	201.58	+	6.56	+	6.53
25 Gram Whole	0.1116	273.30	268.61	244.60	+	1.75	+	11.73
26 Beans	0.0896	368.71	353.35	244.91	+	4.35	+	50.55
27 Potatoes	0.7437	258.40	384.88	182.80	-	32.86	+	41.36
28 Onions	0.8965	462.02	352.65	524.94	+	31.01	-	11.99
29 Tomatoes	0.5069	296.49	238.88	131.73	+	24.12	+	125.07
30 Fresh Vegetables	2.0947	306.16	283.26	164.81	+	8.08	+	85.77
31 Sugar	2.0296	234.36	228.65	150.69	+	2.50	+	55.52
32 Gur	0.1522	239.57	226.93	158.55	+	5.57	+	51.10
33 Honey	0.0296	181.94	178.00	170.54	+	2.21	+	6.68
34 Sweetmeat	0.3967	269.35	268.32	211.39	+	0.38	+	27.42
35 Ice Cream	0.0568	197.95	197.95	161.27	+	0.00	+	22.74
36 Condiments and Spices	1.4919	280.20	276.61	218.93	+	1.30	+	27.99
37 Dessert Preparation	0.0133	269.02	269.02	194.43	+	0.00	+	38.36
38 Tea	1.2566	356.84	354.88	240.88	+	0.55	+	48.14
39 Beverages	0.5537	231.09	230.79	159.58	+	0.13	+	44.81
Alcoholic Beverages, Tobacco	1.2786	344.33	343.84	186.61	+	0.14	+	84.52
40 Cigarettes	1.2364	345.19	344.81	184.27	+	0.11	+	87.33
41 Pan Prepared	0.0422	319.23	315.48	255.20	+	1.19	+	25.09
Clothing and footwear	9.4826	235.68	233.32	188.83	+	1.01	+	24.81
42 Cotton Cloth	2.8381	249.56	247.39	201.94	+	0.88	+	23.58
43 Woolen Cloth	1.0959	232.36	230.10	182.98	+	0.98	+	26.99
44 Readymade Garments	1.1345	217.97	216.98	180.58	+	0.46	+	20.71
45 Woolen Readymade Garments	0.5401	265.49	255.50	191.52	+	3.91	+	38.62
46 Tailoring	1.2999	221.72	221.24	185.68	+	0.22	+	19.41
47 Hosiery	0.4322	313.60	310.47	248.88	+	1.01	+	26.00
48 Dopatta	0.2078	221.75	215.56	172.28	+	2.87	+	28.71
49 Cleaning and Laundering	0.0176	248.58	247.65	198.01	+	0.38	+	25.54
50 Footwear	1.9165	212.40	210.31	167.20	+	0.99	+	27.03
Housing, water, Elec., Gas an	18.4853	225.61	218.16	183.03	+	3.41	+	23.26
51 House Rent	8.6110	166.06	162.17	155.09	+	2.40	+	7.07
52 Construction Input Items	0.6306	228.43	229.63	195.40	-	0.52	+	16.90
53 Construction Wage Rates	0.2526	222.59	221.88	194.32	+	0.32	+	14.55
54 Water Supply	0.0645	292.34	292.34	222.06	+	0.00	+	31.65
55 Garbage Collection	0.0080	189.52	189.52	169.61	+	0.00	+	11.74
56 Electricity Charges	3.4431	320.26	300.86	187.78	+	6.45	+	70.55
57 Liquefied Hydrocarbons	0.9994	317.08	306.16	253.05	+	3.57	+	25.30
58 Solid Fuel	4.4761	245.83	239.78	214.58	+	2.52	+	14.56

Annexure B: CPI (Rural) Index Numbers by Commodity Groups & Commodities (2015-16=100)

Item and Specification	Weight	Index Numbers			% Change in Jan 2024 over			
		Jan 24	Dec 23	Jan 23	Dec 2023	Jan 2023		
<i>Furnishing and household equivalent</i>	4.1031	274.56	272.51	204.69	+	0.75	+	34.13
59 Furniture and Furnishing	0.5786	249.49	247.30	191.80	+	0.89	+	30.08
60 Household Textiles	0.4382	219.57	215.46	181.97	+	1.91	+	20.66
61 Household Equipments	1.2774	265.99	264.80	198.23	+	0.45	+	34.18
62 Plastic Products	0.0776	257.44	255.93	206.53	+	0.59	+	24.65
63 Major Tools and Equipments	0.0324	217.78	217.49	182.82	+	0.13	+	19.12
64 Washing Soaps, Detergents and	1.6989	305.59	303.42	220.14	+	0.72	+	38.82
<i>Health</i>	3.5141	234.48	233.67	196.06	+	0.35	+	19.60
65 Drugs and Medicines	1.5792	268.43	266.81	219.91	+	0.61	+	22.06
66 Doctor Clinic Fee	0.5128	279.73	279.73	235.65	+	0.00	+	18.71
67 Dental Services	0.0181	188.38	188.38	167.48	+	0.00	+	12.48
68 Medical Tests	0.3967	211.09	210.51	176.75	+	0.28	+	19.43
69 Hospitals Services	1.0073	168.25	168.19	146.62	+	0.04	+	14.75
<i>Transport</i>	5.5580	314.18	324.36	242.09	-	3.14	+	29.78
70 Motor Vehicles	0.7305	192.76	192.75	164.05	+	0.01	+	17.50
71 Motor Vehicles Accessories	0.1572	258.45	257.92	203.95	+	0.21	+	26.72
72 Motor Fuels	2.4932	359.68	373.36	298.55	-	3.66	+	20.48
73 Mechanical Services	0.3645	221.45	221.45	182.65	+	0.00	+	21.24
74 Motor Vehicle Tax	0.0174	150.93	150.93	150.93	+	0.00	+	0.00
75 Transport Services	1.7952	325.70	338.24	211.72	-	3.71	+	<u>53.84</u>
<i>Communication</i>	1.9940	127.60	111.63	107.50	+	14.31	+	18.70
76 Postal Services	0.0070	179.32	179.32	149.43	+	0.00	+	20.00
77 Communication Apparatus	0.3362	155.20	154.64	130.79	+	0.36	+	18.66
78 Communication Services	1.6508	121.76	102.58	102.58	+	18.70	+	18.70
<i>Recreation and culture</i>	1.3764	276.05	275.74	203.54	+	0.11	+	35.62
79 Recreation and Culture	0.4763	217.18	217.03	194.65	+	0.07	+	11.57
80 Text Books	0.5047	327.72	327.72	208.84	+	0.00	+	<u>56.92</u>
81 Newspapers	0.0230	242.52	242.52	165.72	+	0.00	+	46.34
82 Stationery	0.3724	283.38	282.44	210.07	+	0.33	+	34.90
<i>Education</i>	2.1342	181.78	181.78	156.09	+	0.00	+	16.46
83 Education	2.1342	181.78	181.78	156.09	+	0.00	+	16.46
<i>Restaurants and hotels</i>	6.1895	264.69	260.26	201.46	+	1.70	+	31.39
84 Readymade Food	3.8001	290.55	288.68	225.40	+	0.65	+	28.90
85 Marriage Hall Charges	2.2525	230.35	221.33	166.71	+	4.08	+	38.17
86 Accommodation Services	0.1369	112.13	112.13	108.81	+	0.00	+	3.05
<i>Misc. goods and services</i>	5.0174	279.48	276.26	214.48	+	1.17	+	30.31
87 Personal Grooming Services	1.5363	281.74	278.37	227.12	+	1.21	+	24.05
88 Appliances/Articles/Products	2.2746	238.93	237.06	166.48	+	0.79	+	43.52
89 Personal Effects n.e.c.	1.2065	353.05	347.46	288.87	+	1.61	+	22.22

Annexure C: Wholesale Price Indices by Major Groups & Commodities (2015-16=100)

Item and Specification	Weight	Index Numbers			% Change in Jan 2024 over	
		Jan 24	Dec 23	Jan 23	Dec 2023	Jan 2023
General	100.0000	310.54	306.05	244.61	+ 1.47	+ 26.95
Agriculture Forestry & Fisher	25.7674	285.82	269.72	244.69	+ 5.97	+ 16.81
001 Wheat	0.6297	368.01	366.95	325.76	+ 0.29	+ 12.97
002 Maize	0.6764	215.28	215.06	251.36	+ 0.10	- 14.35
003 Rice	2.4413	356.12	352.45	276.04	+ 1.04	+ 29.01
004 Sorghum / Jowar	0.0214	280.03	280.63	255.13	- 0.21	+ 9.76
005 Millet / Bajra	0.0374	244.34	233.38	256.43	+ 4.70	- 4.71
006 Vegetables	1.2441	447.82	372.23	284.36	+ 20.31	+ <u>57.48</u>
007 Fresh Fruits	1.5144	200.18	189.18	215.24	+ 5.81	- 7.00
008 Dry Fruits	0.2478	322.38	323.00	230.95	- 0.19	+ 39.59
009 Cotton Seeds	1.1511	172.67	172.33	173.53	+ 0.20	- 0.50
010 Other Oil Seeds	0.0722	277.77	283.94	316.91	- 2.17	- 12.35
011 Edible Roots / Potatoes	0.2540	289.78	467.49	195.68	- 38.01	+ 48.09
012 Stimulant & Spice Crops	0.1634	373.38	337.29	315.48	+ 10.70	+ 18.35
013 Pulses	0.4901	269.26	260.29	222.45	+ 3.45	+ 21.04
014 Sugar Crops	1.0725	273.77	250.51	183.95	+ 9.29	+ 48.83
015 Fibre Crops	5.3169	362.34	322.58	345.39	+ 12.33	+ 4.91
016 Unmanufactured Tobacco	0.0742	521.36	522.12	266.03	- 0.15	+ <u>95.98</u>
017 Poultry	0.5633	317.44	230.99	252.53	+ 37.43	+ 25.70
018 Raw Milk from Bovine Animals	7.0279	226.55	226.55	192.47	+ 0.00	+ 17.71
019 Eggs	0.5034	486.43	415.34	345.18	+ 17.12	+ 40.92
020 Raw Animal Materials / Wool	0.0351	136.29	135.54	110.86	+ 0.55	+ 22.94
021 Hides, Skins & Fur Skins, Raw	0.4834	48.31	50.66	46.36	- 4.64	+ 4.21
022 Fuel Wood in Logs	0.0179	183.72	183.72	167.28	+ 0.00	+ 9.83
023 Fish Live Fresh or Chilled	1.7295	214.76	209.26	184.87	+ 2.63	+ 16.17
Ores/Minerals, Elec., Gas & W	12.0069	381.15	372.58	218.23	+ 2.30	+ 74.66
024 Coal not Agglomerated	0.7508	194.29	194.29	135.98	+ 0.00	+ 42.88
025 Natural Gas Liquefied	5.7065	429.16	428.59	210.70	+ 0.13	+ <u>103.68</u>
026 Salt & Pure Sodium Chloride	0.0584	353.50	350.23	210.88	+ 0.93	+ <u>67.63</u>
027 Electrical Energy	5.4912	357.11	339.00	237.39	+ 5.34	+ <u>50.43</u>
Food, Beverages, Tobacco, Textile	31.1122	262.15	260.91	218.37	+ 0.48	+ 20.05
Food Products, Beverages	20.0718	277.95	276.07	222.37	+ 0.68	+ 24.99
028 Meat of Animals	3.4559	274.86	268.89	225.35	+ 2.22	+ 21.97
029 Vegetables & Fruit Juice	0.0058	237.76	237.76	198.86	+ 0.00	+ 19.56
030 Dried Fruits & Nuts	0.1733	386.35	367.39	305.39	+ 5.16	+ 26.51
031 Fruit Juices	0.3880	254.91	250.41	172.82	+ 1.80	+ 47.50
032 Vegetable Oils Refined	1.9242	271.51	274.86	266.34	- 1.22	+ 1.94
033 Vegetable Ghee	1.5632	309.82	316.88	323.92	- 2.23	- 4.35
034 Oil Cakes	0.9611	270.11	261.35	235.43	+ 3.35	+ 14.73
035 Processed Liquid Milk	4.4437	254.89	254.03	206.75	+ 0.34	+ 23.28
036 Milk & Cream in Solid Form	0.0316	258.37	259.33	193.30	- 0.37	+ 33.66
037 Ice Cream	0.0047	198.75	198.75	167.02	+ 0.00	+ 19.00
038 Dairy Products N.E.C	0.0117	270.15	263.32	184.20	+ 2.59	+ 46.66
039 Wheat Flour	2.3034	360.18	359.78	271.41	+ 0.11	+ 32.71
040 Other Cereal Flour	0.0604	228.10	219.59	196.06	+ 3.88	+ 16.34
041 Sugar Refined	1.7975	234.42	230.49	148.31	+ 1.71	+ <u>58.06</u>
042 Chocolate	0.0139	122.88	122.85	96.68	+ 0.02	+ 27.10
043 Sugar Confectionary	0.0738	236.53	236.41	202.90	+ 0.05	+ 16.57
044 Coffee & Tea	0.7303	276.73	265.36	209.76	+ 4.28	+ 31.93
045 Spices	0.1449	371.35	370.84	215.09	+ 0.14	+ <u>72.65</u>
046 Other Food Products	0.0336	231.04	230.54	141.57	+ 0.22	+ <u>63.20</u>
047 Mineral Water	0.0207	209.52	209.13	162.25	+ 0.19	+ 29.13
048 Beverages	0.6303	255.65	255.18	164.97	+ 0.18	+ <u>54.97</u>
049 Tobacco Products	1.2998	259.58	259.58	134.10	+ 0.00	+ <u>93.57</u>
Textiles & Apparels	10.3289	236.72	236.63	214.65	+ 0.04	+ 10.28
050 Cotton Yarn	5.2491	239.61	239.61	239.61	+ 0.00	+ 0.00
051 Nylon Yarn	0.1719	95.24	95.24	95.24	+ 0.00	+ 0.00
052 Blended Yarn	0.1689	148.12	148.12	148.12	+ 0.00	+ 0.00
053 Woven Fabrics	0.0128	237.72	237.72	188.89	+ 0.00	+ 25.85
054 Cotton Fabrics	0.6343	282.53	282.53	201.89	+ 0.00	+ 39.94
055 Other Fabrics	1.1016	211.53	211.53	176.33	+ 0.00	+ 19.96
056 Silk & Reyon Fabrics	0.7350	349.68	349.21	254.33	+ 0.13	+ 37.49
057 Towels	0.1235	193.86	193.57	172.09	+ 0.15	+ 12.65
058 Blankets	0.0029	145.65	145.65	137.84	+ 0.00	+ 5.67
059 Bed Sheets	0.0913	167.07	167.97	136.90	- 0.54	+ 22.04

Annexure C: Wholesale Price Indices by Major Groups & Commodities (2015-16=100)

Item and Specification	Weight	Index Numbers			% Change in Jan 2024 over			
		Jan 24	Dec 23	Jan 23	Dec 2023	Jan 2023		
060 Quilts	0.0019	234.52	222.51	172.70	+	5.40	+	35.80
061 Woolen Carpets	0.0383	173.86	173.86	146.63	+	0.00	+	18.57
062 Synthetic Carpets	0.0566	150.83	150.83	132.43	+	0.00	+	13.89
063 Hosiery Products	0.8832	191.34	190.68	172.42	+	0.35	+	10.97
064 Readymade Garments	1.0576	235.81	235.81	195.17	+	0.00	+	20.82
Leather Products	0.7115	185.68	185.68	159.57	+	0.00	+	16.36
065 Leather Without Hair	0.2973	181.35	181.35	140.15	+	0.00	+	29.40
066 Other Leather N.E.C	0.2567	158.95	158.95	148.41	+	0.00	+	7.10
067 Footwears	0.1575	237.41	237.41	214.40	+	0.00	+	10.73
Other Transportable Goods	22.3979	341.54	347.13	273.01	-	1.61	+	25.10
068 Timber	0.0165	224.80	224.45	194.74	+	0.16	+	15.44
069 Printing Paper	0.4279	239.03	244.33	190.06	-	2.17	+	25.77
070 Hard Board	0.1579	209.29	209.29	146.50	+	0.00	+	42.86
071 Motor Spirit	1.6268	373.46	389.51	308.17	-	4.12	+	21.19
072 Diesel Oil	5.4849	350.88	360.65	329.77	-	2.71	+	6.40
073 Kerosene Oil	0.2151	368.41	384.57	340.40	-	4.20	+	8.23
074 Furnace Oil	3.2664	572.56	583.65	379.02	-	1.90	+	51.06
075 Mobil Oil	0.7114	236.05	236.05	208.94	+	0.00	+	12.98
076 Chemicals	1.7720	285.24	293.32	265.81	-	2.75	+	7.31
077 Dyeing Material	0.1539	220.27	220.27	146.16	+	0.00	+	50.70
078 Fertilizers	2.8657	258.11	259.54	198.23	-	0.55	+	30.21
079 Pesticides	0.2763	186.07	186.07	157.83	+	0.00	+	17.89
080 Insecticides	0.1276	151.05	151.05	111.49	+	0.00	+	35.48
081 Paints & Varnishes	0.1916	269.25	269.25	208.39	+	0.00	+	29.20
082 Medicines	1.1428	321.67	306.90	244.15	+	4.81	+	31.75
083 Soaps & Detergents	0.8168	226.32	226.45	165.76	-	0.06	+	36.53
084 Auto Tyres	0.2703	246.66	246.71	186.18	-	0.02	+	32.48
085 Plastic Products	0.4550	193.13	192.69	134.54	+	0.23	+	43.55
086 Glass sheets	0.2089	355.31	355.31	244.38	+	0.00	+	45.39
087 Other Glass Articles	0.1635	208.89	208.80	160.55	+	0.04	+	30.11
088 Ceramics & Sanitary Fixture	0.0244	204.97	196.31	175.99	+	4.41	+	16.47
089 Bricks, Blocks & Tiles	0.1566	192.88	194.26	164.39	-	0.71	+	17.33
090 Cement	1.8145	243.32	244.89	204.59	-	0.64	+	18.93
091 Bed Foam	0.0006	332.28	331.49	264.45	+	0.24	+	25.65
092 Matches	0.0505	3319.19	3306.56	1448.23	+	0.38	+	129.19
Metal Product, Machinery & Equivalent	8.7156	379.46	377.32	301.33	+	0.57	+	25.93
093 Steel Bar & Sheets	1.4615	352.15	352.99	294.46	-	0.24	+	19.59
094 Pipe Fittings	0.0780	428.38	428.38	278.60	+	0.00	+	53.76
095 Steel Products	0.3879	244.45	244.45	143.41	+	0.00	+	70.46
096 Engines & Motors	0.0046	186.89	186.89	117.67	+	0.00	+	58.83
097 Vacuum Pumps	0.0155	107.56	107.56	107.56	+	0.00	+	0.00
098 Air Conditioners	0.0049	313.62	313.62	189.28	+	0.00	+	65.69
099 Cultivators	0.0551	361.67	361.67	174.49	+	0.00	+	107.27
100 Chuff Cutter	0.1293	504.72	504.72	404.71	+	0.00	+	24.71
101 Tractors	0.0028	297.43	297.43	206.24	+	0.00	+	44.22
102 Lathe Machines	0.0525	467.20	467.20	364.02	+	0.00	+	28.34
103 Concrete Mixture	0.0107	369.25	369.25	255.01	+	0.00	+	44.80
104 Fridge, Wash M, Sew M, Fans, Iron	1.1645	279.25	279.25	187.12	+	0.00	+	49.24
105 Electric Wires	0.0912	279.37	275.58	193.49	+	1.38	+	44.38
106 Lighting Equipments	1.4431	728.27	714.75	633.97	+	1.89	+	14.87
107 Radio & Television	0.1843	196.21	196.21	123.32	+	0.00	+	59.11
108 Motor Vehicles	0.0244	254.58	254.58	208.83	+	0.00	+	21.91
109 Motorcycles	0.2570	263.76	263.76	204.27	+	0.00	+	29.12
110 Bicycles	3.3483	308.80	308.80	239.03	+	0.00	+	29.19
