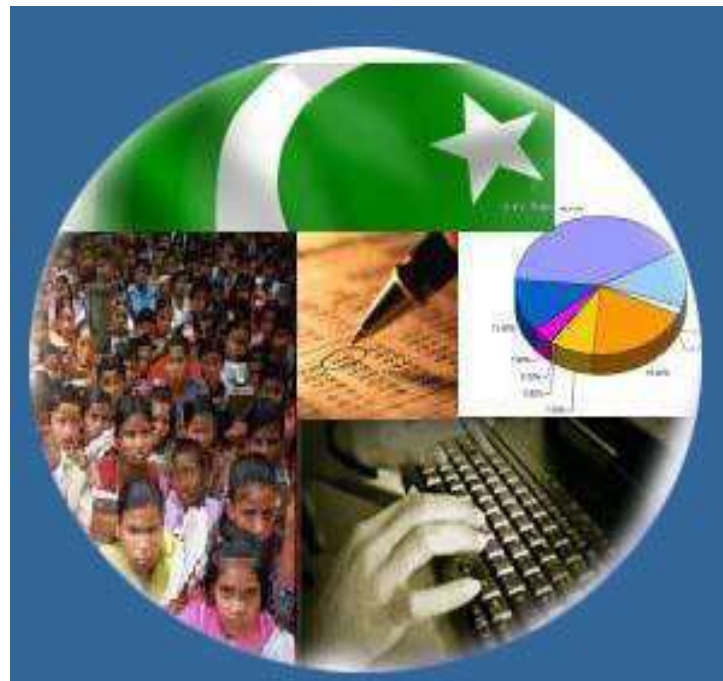




Monthly Review on Price Indices



August 2024
(Base Year 2015-16)

Government of Pakistan
Ministry of Planning, Development & Special Initiatives
Pakistan Bureau of Statistics
Islamabad

PRICE STATISTICS TEAM

S#	Name	Designation
1.	Dr. Naeem Uz Zafar	Chief Statistician
2.	Dr. Bahrawar Jan	Deputy Director General
3.	Mr. Naseer Ahmad	Director
4.	Dr. Ahtasham Gul	Chief Statistical Officer
5.	Mr. Adnan Shams	Statistical Officer
6.	Mr. Kashif Ali	Statistical Officer
7.	Miss. Umaira Zareen	Statistical Officer
8.	Mr. Kashif Yaqoob	Statistical Officer
9.	Mr. Umer Farooq	Statistical Assistant
10.	Mr. Ansar Mahmood	Statistical Assistant
12.	Mrs. Madiha Gulfraz	Statistical Assistant
13.	Mrs. Humail Fatima	Statistical Assistant
14.	Mr. Muhammad Asif	Statistical Assistant

IT & SOFTWARE TEAM

1.	Mr. Muhammad Ehtesham	Director (DP)
2.	Mrs. Sobia Munawar	Director (DP)
3.	Mr. Arsalan Bashir	Data Processing Officer
4.	Mr. Muhammad Kibria	Data Processing Officer
5.	Mr. Muhammad Irfan Bajwa	Data Processing Assistant

Inflation in Brief

- CPI inflation General**, increased to 9.6% on year-on-year basis in August 2024 as compared to an increase of 11.1% in the previous month and 27.4% in August 2023. On month-on-month basis, it increased to 0.4% in August 2024 as compared to an increase of 2.1% in the previous month and an increase of 1.7% in August 2023.
- CPI inflation Urban**, increased to 11.7% on year-on-year basis in August 2024 as compared to an increase of 13.2% in the previous month and 25.0% in August 2023. On month-on-month basis, it increased to 0.3% in August 2024 as compared to an increase of 2.0% in the previous month and an increase of 1.6% in August 2023.
- CPI inflation Rural**, increased to 6.7% on year-on-year basis in August 2024 as compared to an increase of 8.1% in the previous month and 30.9% in August 2023. On month-on-month basis, it increased to 0.6% in August 2024 as compared to an increase of 2.2% in the previous month and an increase of 1.9% in August 2023.
- SPI inflation** on YoY increased to 10.8% in August 2024 as compared to an increase of 15.7% a month earlier and 27.9% in August 2023. On MoM basis, it decreased to 0.3% in August 2024 as compared to an increase of 2.0% a month earlier and an increase of 4.1% in August 2023.
- WPI inflation** on YoY basis increased to 6.3% in August 2024 as compared to an increase of 10.4% a month earlier and an increase of 24.3% in August 2023. On MoM basis, it increased by 0.3% in August 2024 as compare to an increase of 2.3% in the previous month and an increase of 4.2% in corresponding month of last year i.e. August 2023.
- Figures 1 and 2 show graphically the yearly data of Table 1.a for Urban and Rural CPI while Table 1.1 shows "Period Average" and "YoY" percentage changes in indices of three years.

Table 1.a General Inflation (%) (Base 2015-16)																		
PERIOD	CPI														SPI**		WPI	
	General						Food				Non-Food							
	National		Urban		Rural		Urban		Rural		Urban		Rural		YoY	MoM	YoY	MoM
	YoY	MoM	YoY	MoM	YoY	MoM	YoY	MoM	YoY	MoM	YoY	MoM	YoY	MoM				
Nov-22	23.8	0.8	21.6	0.4	27.2	1.3	29.7	0.0	33.5	0.5	16.4	0.6	21.4	2.1	27.1	6.1	27.7	0.0
Dec-22	24.5	0.5	21.6	0.3	28.8	0.7	32.7	0.0	37.9	0.1	14.8	0.6	20.7	1.4	27.8	0.2	27.1	-0.7
Jan-23	27.6	2.9	24.4	2.4	32.3	3.6	39.0	3.9	45.2	5.7	15.6	1.2	20.9	1.5	30.5	1.3	28.5	1.8
Feb-23	31.5	4.3	28.8	4.5	35.6	4.0	41.9	4.3	47.0	3.9	20.8	4.7	25.3	4.1	33.6	3.7	36.4	8.2
Mar-23	35.4	3.7	33.0	3.9	38.9	3.5	47.1	5.6	50.2	4.5	24.1	2.7	28.5	2.4	40.4	5.8	37.5	4.7
Apr-23	36.4	2.4	33.5	2.0	40.7	3.0	46.8	3.4	52.2	4.2	24.9	1.0	29.9	1.6	42.1	2.7	33.4	0.1
May-23	38.0	1.6	35.1	1.5	42.2	1.7	48.1	1.9	52.4	1.4	26.6	1.2	32.5	2.0	43.0	1.3	32.8	1.0
Jun-23	29.4	-0.3	27.3	0.1	32.4	-0.8	40.8	0.1	41.5	-1.6	18.7	0.1	23.8	0.1	34.9	0.2	22.4	-0.3
Jul-23	28.3	3.5	26.3	3.6	31.3	3.3	40.2	3.7	41.3	3.5	17.3	3.5	22.0	3.0	29.3	2.8	23.1	2.5
Aug-23	27.4	1.7	25.0	1.6	30.9	1.9	38.8	0.6	40.6	0.8	16.3	2.4	22.0	3.1	27.9	4.1	24.3	4.2
Sep-23	31.4	2.0	29.7	1.7	33.9	2.5	33.9	1.5	35.4	1.8	26.8	1.8	32.3	3.2	32.0	1.7	26.4	3.1
Oct-23	26.8	1.0	25.5	1.1	28.7	0.9	28.9	0.6	28.6	0.7	23.1	1.4	28.8	1.1	34.2	0.2	24.6	-1.9
Nov-23	29.2	2.7	30.4	4.3	27.5	0.4	29.8	0.8	29.2	1.0	30.9	7.0	25.9	-0.2	30.6	3.3	26.4	1.4
Dec-23	29.7	0.8	30.9	0.7	27.9	1.0	28.8	-0.7	29.3	0.1	32.4	1.8	26.4	1.8	35.3	3.8	27.3	0.0
Jan-24	28.3	1.8	30.2	1.8	25.7	1.9	27.4	2.8	25.1	2.3	32.3	1.1	26.3	1.4	36.2	2.0	27.0	1.5
Feb-24	23.1	0.0	24.9	0.2	20.5	-0.3	20.2	-1.5	19.0	-1.1	28.2	1.5	22.1	0.6	30.4	-0.8	18.7	1.1
Mar-24	20.7	1.7	21.9	1.4	19.0	2.1	16.6	2.4	17.1	2.8	25.8	0.7	21.0	1.4	25.9	2.1	14.8	1.3
Apr-24	17.3	-0.4	19.4	-0.1	14.5	-0.9	11.3	-1.3	9.5	-2.6	25.6	0.8	20.0	0.8	21.6	-0.7	13.9	-0.7
May-24	11.8	-3.2	14.3	-2.8	8.2	-3.9	2.2	-6.3	-0.1	-7.4	23.6	-0.4	17.2	-0.4	15.3	-4.0	9.9	-2.5
Jun-24	12.6	0.5	14.9	0.6	9.3	0.3	2.6	0.4	1.3	-0.2	24.3	0.7	17.9	0.8	16.6	1.3	10.6	0.4
July-24	11.1	2.1	13.2	2.0	8.1	2.2	3.4	4.5	1.3	3.6	20.7	0.5	15.5	0.9	15.7	2.0	10.4	2.3
Aug-24	9.6	0.4	11.7	0.3	6.7	0.6	4.1	1.3	1.9	1.3	17.4	-0.4	11.9	-0.2	10.8	-0.3	6.3	0.3

** SPI for quintile 1. Digits 0.0* are due to rounding off.

Core inflation (NFNE)

7. Measured by **non-food non-energy Urban** increased to 10.2% on (YoY) basis in August 2024 as compared to an increase of 11.7% in the previous month and 18.4% in August 2023. On (MoM) basis, it increased by 0.4% in August 2024 as compared to an increase of 0.7% in previous month and an increase of 1.8% in corresponding month of last year i.e. August, 2023.
8. Measured by **non-food non-energy Rural** increased to 14.4% on (YoY) basis in August 2024 as compared to an increase of 16.9% in the previous month and 25.9% in August 2023. On (MoM) basis, it increased by 0.6% in August 2024 as compared to an increase of 1.1% in previous month and an increase of 2.8% in corresponding month of last year i.e. August 2023.

Core inflation (Trimmed)

9. Measured by 20% **weighted trimmed mean Urban** increased to 8.0% on (YoY) basis in August 2024 as compared to 10.3% in August 2023. On (MoM) basis, it increased to 0.2% in August 2024 as compared to an increase of 1.2% in the previous month and an increase of 1.5% in corresponding month of last year i.e. August 2023.
10. Measured by 20% **weighted trimmed mean Rural** increased to 9.6% on (YoY) basis in August 2024 as compared to 11.3% in the previous month and 30.5% in August 2023. On (MoM) basis, it increased to 0.4% in August 2024 as compared to an increase of 1.7% in the previous month and an increase of 1.4% in corresponding month of last year i.e. August 2023.

Table 1.b Core Inflation (%) (Base 2015-16)

Period	NFNE				Trimmed			
	Urban		Rural		Urban		Rural	
	YoY	MoM	YoY	MoM	YoY	MoM	YoY	MoM
Aug-23	18.4	1.8	25.9	2.8	23.0	1.5	30.5	1.4
Sep-23	18.6	1.0	27.3	2.6	25.0	1.1	33.3	1.7
Oct-23	18.5	1.2	26.7	1.0	24.6	0.6	30.4	0.7
Nov-23	18.6	0.9	25.9	1.4	22.9	0.1	27.9	0.5
Dec-23	18.2	0.8	25.1	0.9	23.3	0.3	28.0	0.7
Jan-24	17.8	1.1	24.6	1.2	22.1	1.0	25.8	1.2
Feb-24	15.5	0.3	21.9	0.4	16.0	0.3	21.3	0.4
Mar-24	12.8	0.1	20.0	0.8	14.8	0.6	18.4	0.9
Apr-24	13.1	2.1	19.3	2.0	13.4	0.5	15.0	0.6
May-24	12.3	0.4	17.0	0.5	11.0	-0.5	10.6	-0.9
June-24	12.2	0.6	17.0	0.9	10.3	0.6	11.0	0.5
July-24	11.7	0.7	16.9	1.1	10.3	1.2	11.3	1.7
Aug-24	10.2	0.4	14.4	0.6	8.0	0.2	9.6	0.4

Table 1.1 Period Average and Y-o-Y % Change

INDEX	Average July - August % Changes			August over August % Changes		
	2024-2025	2023-2024	2022-2023	2024-2025	2023-2024	2022-2023
CPI (National)	10.36	27.84	26.10	9.64	27.38	27.26
CPI (Urban)	12.44	25.61	24.92	11.71	24.98	26.24
CPI (Rural)	7.43	31.09	27.86	6.73	30.89	28.79
SPI	13.24	28.61	31.09	10.85	27.93	33.97
WPI	8.28	23.69	39.91	6.28	24.29	41.25

Figure 1: Urban Inflation - YoY, Special Indices

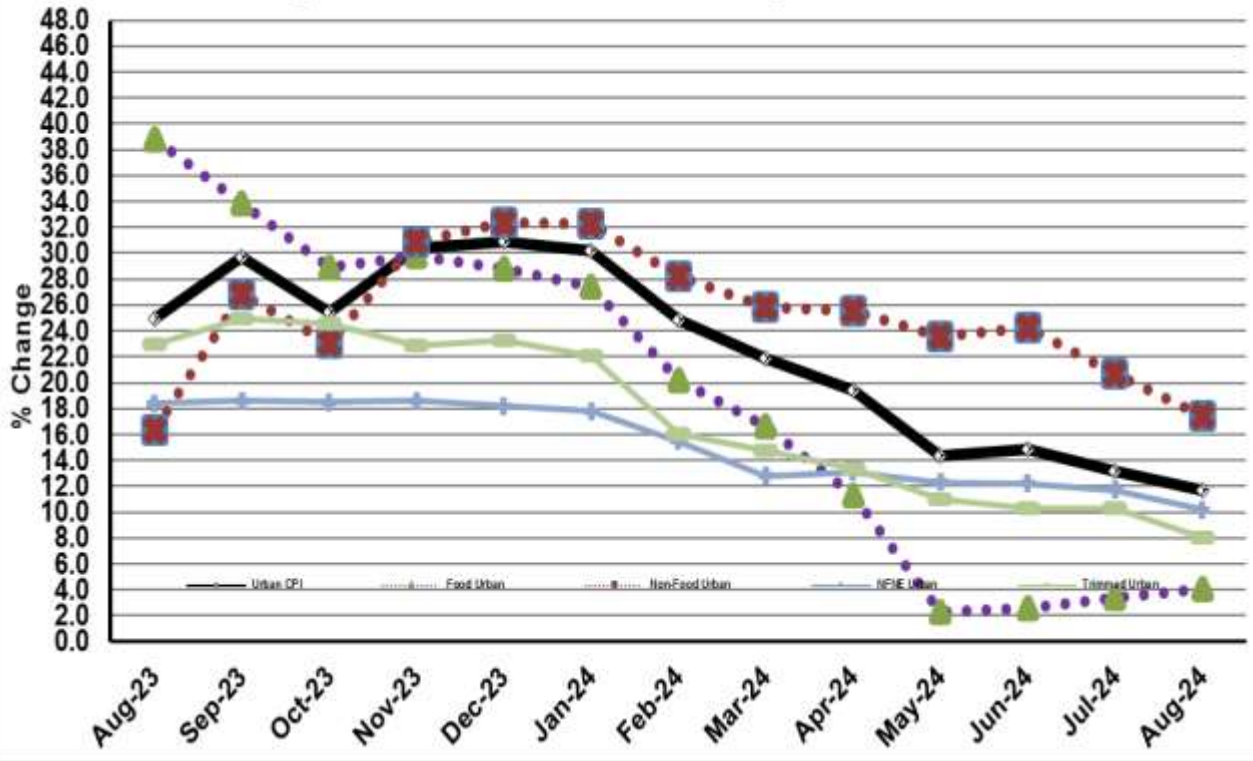


Figure 2: Rural Inflation - YoY, Special Indices

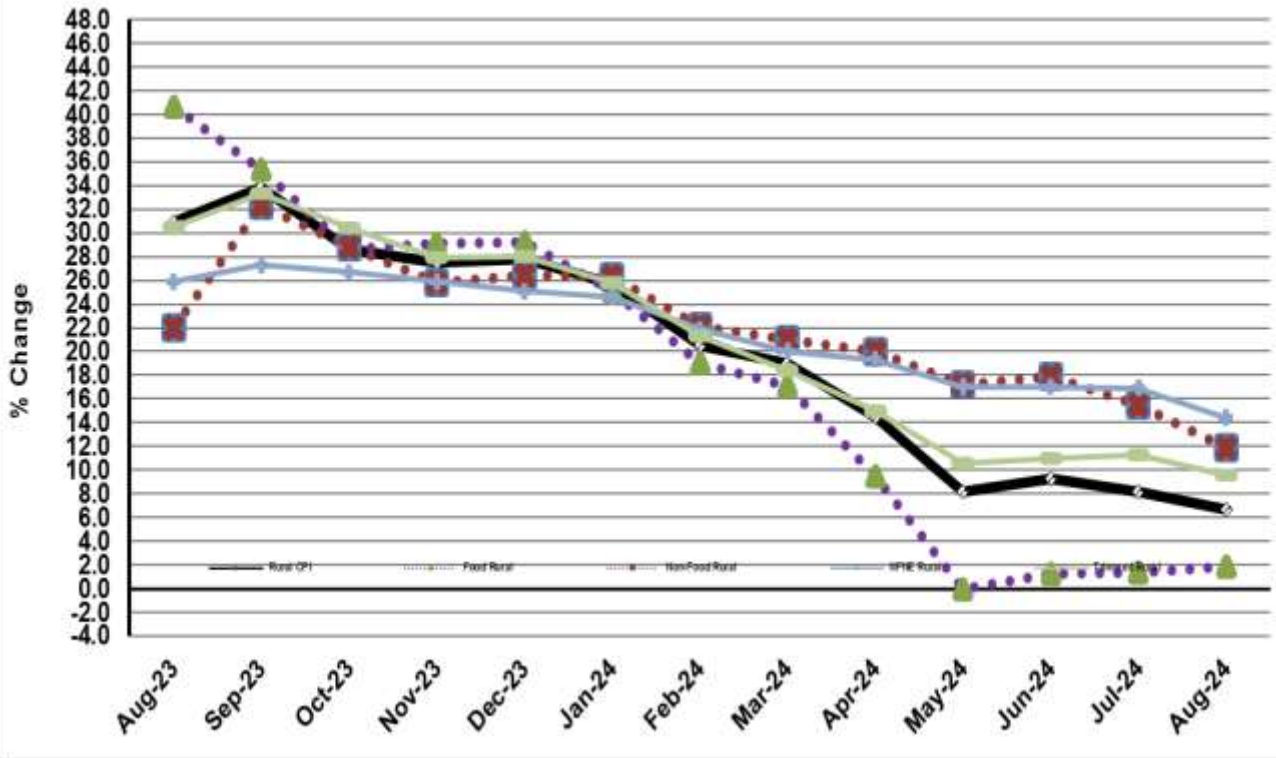


Figure 3: Urban Inflation - MoM, Special Indices

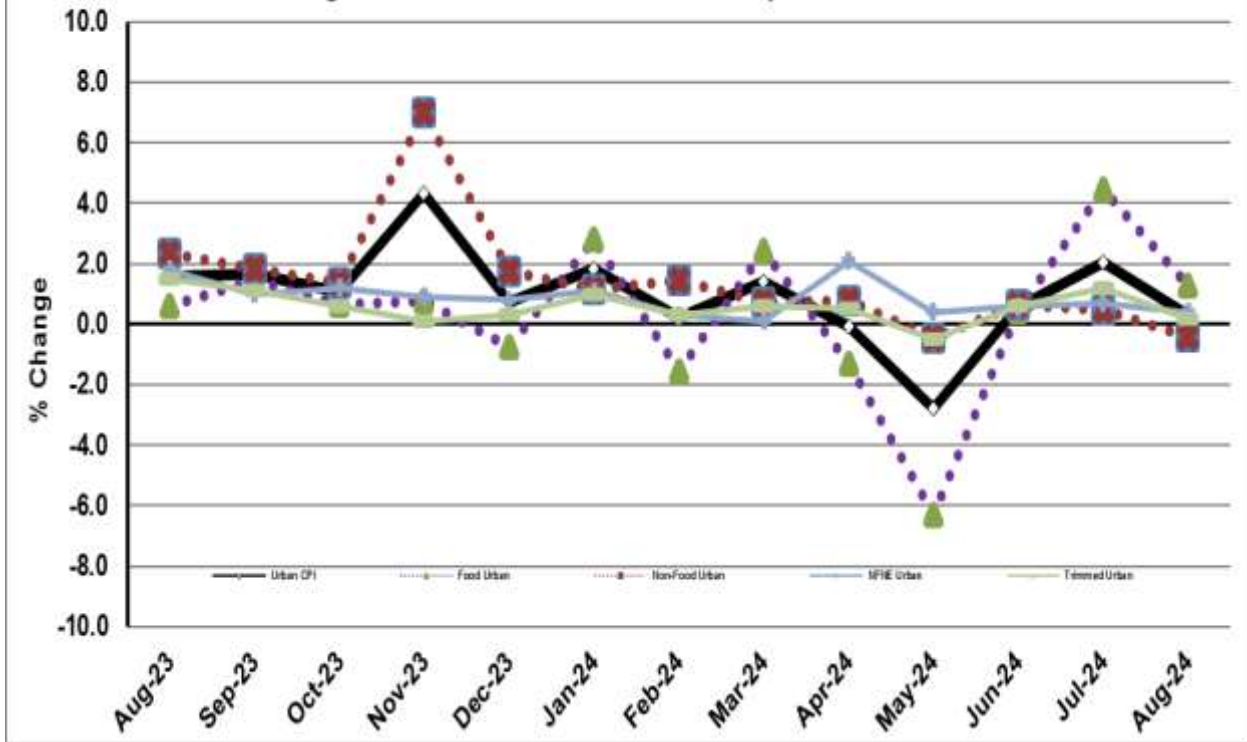


Figure 4: Rural Inflation - MoM, Special Indices

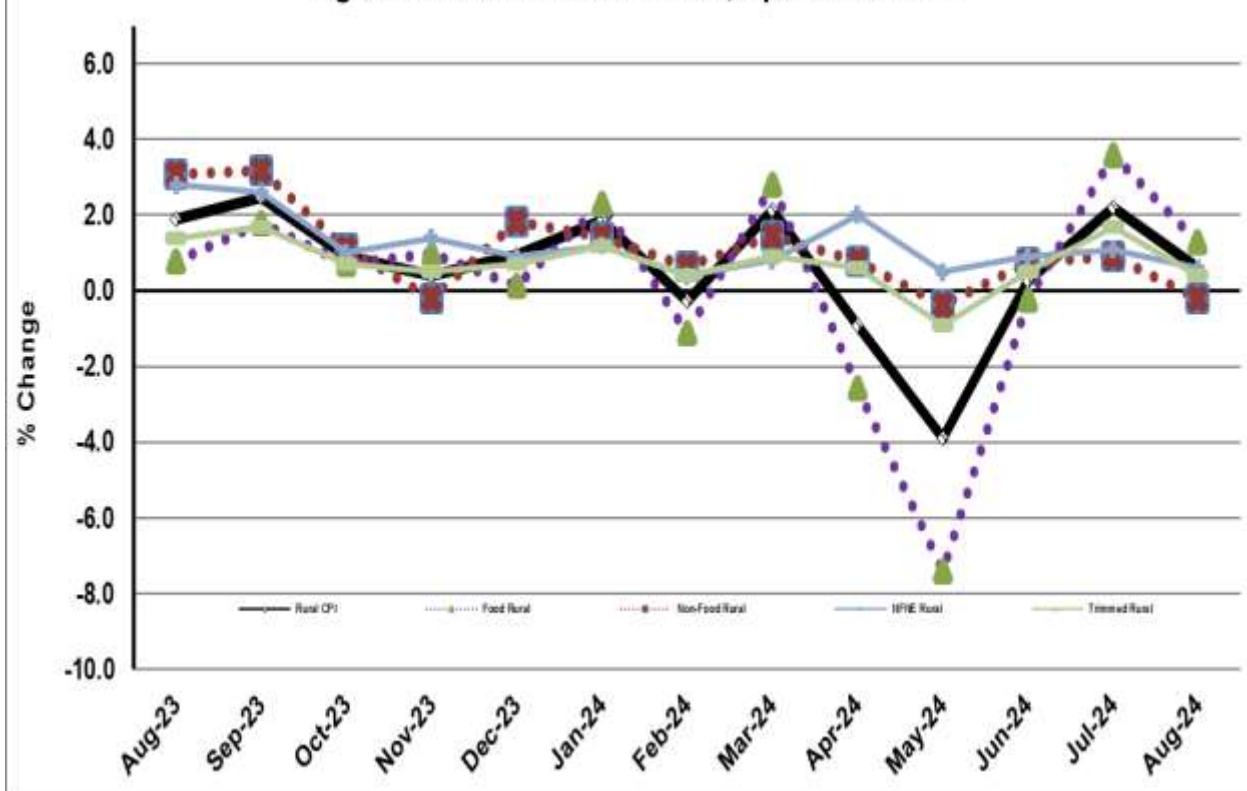


Figure 5: CPI YoY (National, Urban, Rural)

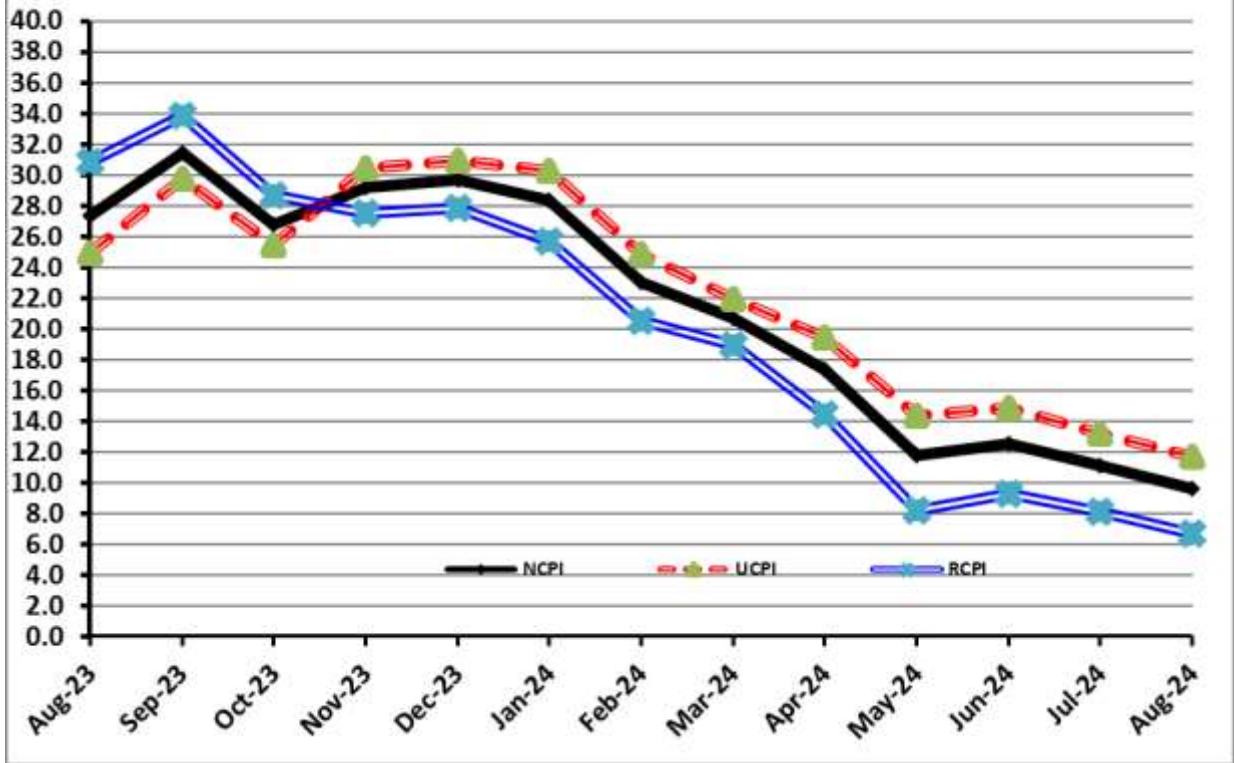
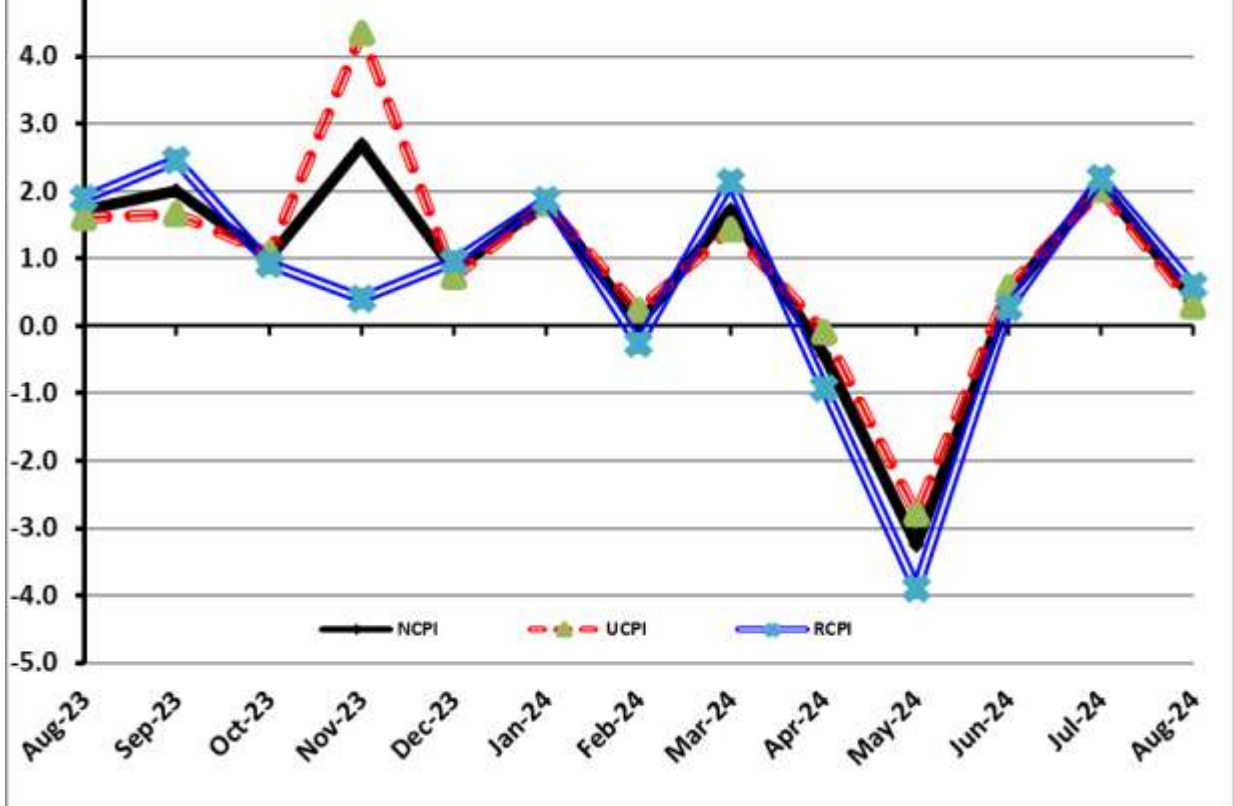


Figure 6: CPI MoM (National, Urban, Rural)



I. National Consumer Price Index (N-CPI)

The **National Consumer Price Index** for **August 2024** is increased by **0.39%** over **July 2024** and increased to **9.64%** over corresponding month of the last year i.e. **August 2023**.

Table 1: Consumer Price Index (National) by Group of Commodities and Services (Base 2015-16)

No	Group	Group Weight (%)	Indices			% Change Aug 2024 Over		Impact (In % points) Aug 2024 Over	
			Aug 24	Jul 24	Aug 23	Jul 24	Aug 23	Jul 24	Aug 23
	General	100.00	262.32	261.32	239.27	0.39	9.64	0.39	9.64
1.	Food & Non-alcoholic Bev.	34.58	280.72	276.69	273.99	1.46	2.46	0.53	0.97
	<i>Non-perishable Food Items</i>	29.60	275.81	272.54	283.13	1.20	-2.58	0.37	-0.91
	<i>Perishable Food Items</i>	4.99	309.89	301.30	219.75	2.85	41.02	0.16	1.88
2.	Alcoholic Bev. & Tobacco	1.02	384.09	383.43	359.45	0.17	6.85	0.00	0.11
3.	Clothing & Footwear	8.60	244.84	243.81	208.74	0.42	17.30	0.03	1.30
4.	Housing, Water, Electricity, Gas & Fuels	23.63	236.93	240.31	193.86	-1.40	22.22	-0.31	4.25
5.	Furnishing & Household Equipment Maintenance	4.10	270.22	269.77	248.54	0.17	8.72	0.01	0.37
6.	Health	2.79	250.63	248.48	212.80	0.86	17.78	0.02	0.44
7.	Transport	5.91	310.22	312.54	300.68	-0.74	3.17	-0.05	0.24
8.	Communication	2.21	134.67	134.61	119.14	0.04	13.03	0.00	0.14
9.	Recreation & Culture	1.59	273.53	270.46	253.82	1.13	7.77	0.02	0.13
10.	Education	3.79	200.98	199.73	178.19	0.63	12.79	0.02	0.36
11.	Restaurants & Hotels	6.92	271.11	269.31	246.54	0.67	9.97	0.05	0.71
12.	Miscellaneous	4.87	291.56	288.40	261.49	1.10	11.50	0.06	0.61

II. Urban Consumer Price Index (UCPI)

The Urban Consumer Price Index for **August 2024** is increased by **0.27%** over **July 2024** and increased to **11.71%** over corresponding month of the last year i.e. **August 2023**.

Table 2: Consumer Price Index (Urban) by Group of Commodities and Services (Base 2015-16)

No	Group	Group Weight (%)	Indices			% Change Aug 2024 Over		Impact (In % points) Aug 2024 Over	
			Aug 24	Jul 24	Aug 23	Jul 24	Aug 23	Jul 24	Aug 23
	General	100.00	259.30	258.59	232.12	0.27	11.71	0.27	11.71
1.	Food & Non-alcoholic Bev.	30.42	280.27	276.10	269.77	1.51	3.89	0.49	1.38
	<i>Non-perishable Food Items</i>	25.97	275.13	271.88	279.09	1.20	-1.42	0.33	-0.44
	<i>Perishable Food Items</i>	4.46	310.24	300.69	215.49	3.18	43.97	0.16	1.82
2.	Alcoholic Bev. & Tobacco	0.85	407.24	407.50	380.50	-0.06	7.03	0.00	0.10
3.	Clothing & Footwear	8.01	236.21	235.24	202.60	0.41	16.59	0.03	1.16
4.	Housing, Water, Electricity, Gas & Fuels	27.03	243.39	246.75	188.75	-1.36	28.95	-0.35	6.36
5.	Furnishing & Household Equip. & Maintenance	4.09	259.86	259.61	243.00	0.10	6.94	0.00	0.30
6.	Health	2.31	253.98	251.47	213.56	1.00	18.93	0.02	0.40
7.	Transport	6.14	305.69	307.43	296.49	-0.57	3.10	-0.04	0.24
8.	Communication	2.35	138.30	138.28	123.77	0.01	11.74	0.00	0.15
9.	Recreation & Culture	1.73	259.63	256.42	245.05	1.25	5.95	0.02	0.11
10.	Education	4.88	195.37	194.55	177.89	0.42	9.83	0.02	0.37
11.	Restaurants & Hotels	7.41	266.75	265.28	247.58	0.55	7.74	0.04	0.61
12.	Miscellaneous	4.77	283.85	281.53	257.91	0.82	10.06	0.04	0.53

Main contributors to month-on-month and year-on-year percentage changes are given below and detail is given in **Annexure-A**.

1. MONTH-ON-MONTH Top few commodities which varied from previous month are given below:

FOOD

Increased: Onions (22.84%), Chicken (13.62%), Eggs (12.39%), Fresh Vegetables (12.25%), Besan (4.88%), Pulse Gram (4.55%), Gram Whole (3.82%), Potatoes (2.90%), Pulse Moong (2.83%), Milk Fresh (1.27%), Milk Products (1.20%), Vegetable Ghee (1.10%), Gur (1.04%), Meat (0.99%), Rice (0.98%), Pulse Mash (0.85%), Condiments and Spices (0.73%), Honey (0.71%), Fish (0.68%), Mustard Oil (0.67%), Readymade Food (0.58%), Beans (0.45%), Cooking Oil (0.38%), Bakery and Confectionary (0.32%), Beverages (0.31%), Milk Powder (0.25%), Sweetmeat (0.20%), Dry Fruits (0.18%), Nimco (0.15%), Butter (0.03%) and Sugar (0.02%).

Decreased: Fresh Fruits (13.10%), Tomatoes (8.09%), Wheat Flour (3.87%), Wheat (3.40%), Dessert Preparation (0.69%), Pulse Masoor (0.57%), Wheat Products (0.38%) and Cigarettes (0.37%).

NON-FOOD:

Increased: Motor Vehicle Tax (168.79%), Stationery (5.08%), Hosiry (3.41%), Personal Effects n.e.c. (2.47%), Dopatta (1.85%), Drugs and Medicines (1.35%), Readymade Garments (1.24%), Plastic Products (1.03%), Doctor (MBBS) Clinic Fee (0.88%).

Decreased: Electricity Charges (6.45%), Motor Fuel (1.78%), Liquified Hydrocarbons (1.50%) and Transport Services (1.05%).

YEAR-ON-YEAR: Top few commodities which varied from corresponding month of previous year i.e. **August, 2023** are given below:

FOOD

Increased: Onions (136.32%), Fresh Vegetables (76.35%), Pulse Gram (42.35%), Besan (31.15%), Fish (28.98%), Fresh Fruits (27.32%), Pulse Moong (25.05%), Milk Powder (24.17%), Beans (23.35%), Dry Fruits (21.10%), Meat (19.04%), Pulse Mash (17.67%), Tomatoes (16.27%), Pulse Masoor (15.56%), Gram Whole (13.10%), Beverages (10.50%), Milk Products (10.16%) and Milk Fresh (10.09%).

Decreased: Wheat (36.62%), Wheat Flour (34.52%), Cooking Oil (11.35%), Wheat Products (8.81%), Vegetable Ghee (7.19%), Rice (6.10%), Mustard Oil (5.89%), Gur (5.66%), Sugar (3.65%), Tea (2.72%) and Eggs (1.86%).

NON-FOOD:

Increased: Gas Charges (318.74%), Motor Vehicle Tax (168.79%), Dental Services (28.84%), Cotton Cloth (24.17%), Woolen Readymade Garments (23.31%) and Transport Services (22.87%).

Decreased: Motor Fuel (4.52%).

III. Rural Consumer Price Index (RCPI)

The Rural Consumer Price Index for August 2024 is increased by 0.55% over July 2024 and increased to 6.73% over corresponding month of the last year i.e. August 2023.

Table 3: Consumer Price Index (Rural) by Group of Commodities and Services (Base 2015-16)

No	Group	Group Weight (%)	Indices			% Change Aug 2024 Over		Impact (In % points) Aug 2024 Over	
			Aug 24	Jul 24	Aug 23	Jul 24	Aug 23	Jul 24	Aug 23
	General	100.00	266.89	265.43	250.06	0.55	6.73	0.55	6.73
1.	Food & Non-alcoholic Bev.	40.87	281.23	277.35	278.73	1.40	0.90	0.60	0.41
	<i>Non-perishable Food Items</i>	<i>35.08</i>	<i>276.57</i>	<i>273.28</i>	<i>287.64</i>	<i>1.20</i>	<i>-3.85</i>	<i>0.44</i>	<i>-1.55</i>
	<i>Perishable Food Items</i>	<i>5.79</i>	<i>309.48</i>	<i>302.01</i>	<i>224.69</i>	<i>2.47</i>	<i>37.74</i>	<i>0.16</i>	<i>1.96</i>
2.	Alcoholic Bev. & Tobacco	1.28	360.75	359.15	338.23	0.45	6.66	0.01	0.12
3.	Clothing & Footwear	9.48	255.85	254.73	216.56	0.44	18.14	0.04	1.49
4.	Housing, Water, Electricity, Gas & Fuels	18.49	222.68	226.09	205.13	-1.51	8.56	-0.24	1.30
5.	Furnishing & Household Equip. & Maintenance	4.10	285.81	285.06	256.88	0.26	11.26	0.01	0.47
6.	Health	3.51	247.30	245.51	212.04	0.73	16.63	0.02	0.50
7.	Transport	5.56	317.76	321.06	307.67	-1.03	3.28	-0.07	0.22
8.	Communication	1.99	128.21	128.09	110.90	0.09	15.61	0.00	0.14
9.	Recreation & Culture	1.38	299.91	297.11	270.46	0.94	10.89	0.01	0.16
10.	Education	2.13	220.36	217.63	179.23	1.25	22.95	0.02	0.35
11.	Restaurants & Hotels	6.19	278.98	276.60	244.66	0.86	14.03	0.06	0.85
12.	Miscellaneous	5.02	302.62	298.25	266.63	1.47	13.50	0.08	0.72

Main contributors to Month-on-Month and Year-on-Year percentage changes are given below and detail is given in **Annexure-B**.

1. MONTH-ON-MONTH Top few commodities which varied from previous month are given below:

FOOD

Increased: Chicken (19.69%), Fresh Vegetables (18.67%), Onions (17.72%), Eggs (14.28%), Pulse Gram (5.32%), Besan (4.44%), Gram Whole (3.26%), Pulse Moong (2.98%), Butter (2.32%), Meat (1.95%), Pulse Mash (1.87%), Condiments and Spices (1.55%), Milk Products (1.48%), Potatoes (1.35%), Honey (1.30%), Readymade Food (0.92%), Vegetable Ghee (0.86%), Milk Powder (0.71%) and Milk Fresh (0.70%).

Decreased: Tomatoes (20.56%), Fresh Fruits (17.09%), Wheat Flour (4.52%), Wheat Products (0.69%), Sugar (0.52%) and Wheat (0.42%).

NON-FOOD

Increased: Motor Vehicle Tax (126.61%), Dental Services (3.24%), Stationery (2.55%), Drugs and Medicines (1.28%), Education (1.25%) and Construction Input Items (1.08%)

Decreased: Electricity Charges (6.45%), Motor Fuels (2.01%), Transport Services (0.57%) and Liquified Hydrocarbons (0.12%).

YEAR-ON-YEAR: Top few commodities which varied from corresponding month of previous year i.e. August, 2023 are given below:

FOOD

Increased: Onions (144.27%), Fresh Vegetables (57.31%), Pulse Gram (39.19%), Beans (30.52%), Pulse Moong (29.46%), Milk Powder (28.42%), Butter (26.14%), Fresh Fruits (25.11%), Fish (24.13%), Besan (22.33%), Meat (21.49%), Pulse Masoor (18.28%), Pulse Mash (17.32%), Dry Fruits (16.59%), Beverages (12.87%), Sweetmeat (12.77%), Nimco (12.06%) and Milk Products(11.68%).

Decreased: Wheat Flour (34.45%), Wheat (33.30%), Cooking Oil (8.94%), Vegetable Ghee (6.85%), Mustard Oil (4.99%), Wheat Products (4.55%), Sugar (3.48%), Eggs (3.05%), Rice (2.46%), Gur (0.98%) and Tea (0.59%).

NON-FOOD

Increased: Motor Vehicle Tax (126.61%), Woolen Readymade Garments (38.42%), Education (22.95%), Cotton Cloth (22.13%), Marriage Hall Charges (21.77%), Furniture and Furnishing (21.77%), Transport Services (19.52%), Woolen Cloth (18.91%), Communication Services (18.70%) and Footware (17.85%).

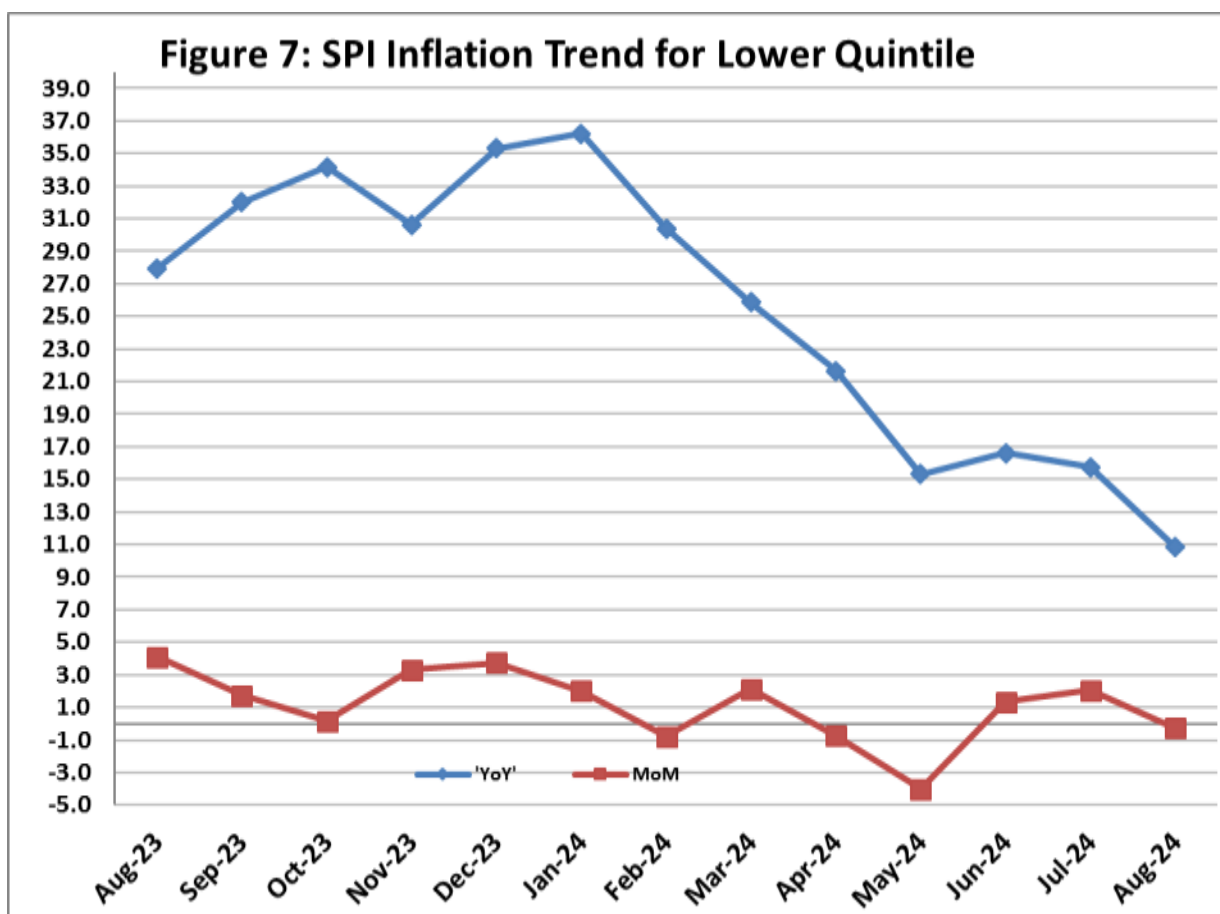
Decreased: Motor Fuels (5.23%).

IV. Sensitive Price Indicator

Quintile-wise percentage changes YoY and MoM are given below in Table 4. The series from August 2023 to August 2024 is also graphed below in Figure 7.

Table 4: Sensitive Price Indicator (Base 2015-16)					
Quintiles	Indices			% Change Aug 2024 Over	
	Aug 2024	July 2024	Aug 2023	July 2024	Aug 2023
1	310.40	311.30	280.03	-0.29	10.85
2	308.22	310.48	267.76	-0.73	15.11
3	331.78	330.73	277.15	0.32	19.71
4	320.90	318.56	273.32	0.73	17.41
5	323.58	319.20	278.53	1.37	16.17
Combined	321.44	320.12	274.51	0.41	17.10

Table 4.1: Weekly Percentage Change of SPI During August 2024					
Quintiles	% Change with Previous week				
	01-08-2024	08-08-2024	15-08-2024	22-08-2024	29-08-2024
Quintile 1	-0.9	0.46	0.07	-0.24	0.16
Combined	-0.12	0.3	-0.16	-0.1	-0.62



V. Wholesale Price Index

The Wholesale Price Index for **August, 2024** increased by **0.30%** over **July, 2024**. It increased to **6.28%** over the corresponding month of the last year i.e. **August, 2023**. YoY and MoM movements, from August, 2023 to August, 2024 are also graphed below in Figure 8.

Table 5: Wholesale Price Index by Group of Commodities (Base 2015-16)

No	Group	Group Weight (%)	Indices			% Change Aug 2024 Over		Impact (In % points) Aug 2024 Over	
			Aug 24	Jul 24	Aug 23	Jul 24	Aug 23	Jul 24	Aug 23
	General	100.00	316.84	315.88	298.13	0.30	6.28	0.30	6.28
1	Agriculture Forestry & Fishery	25.77	289.40	285.30	272.28	1.44	6.29	0.33	1.48
2	Ores/Minerals, Elec., Gas & Water	12.01	375.03	371.85	266.66	0.86	40.64	0.12	4.36
3	Food, Beverages, Tobacco, Textiles & Leather Products	31.11	271.54	271.64	260.87	-0.04	4.09	-0.01	1.11
	i. Food Products, Beverages & Tobacco	20.07	285.48	286.48	277.79	-0.35	2.77	-0.06	0.52
	ii. Textiles & Apparels	10.33	250.12	248.51	233.70	0.65	7.03	0.05	0.57
	iii. Leather Products	0.71	188.92	188.92	177.88	0.00	6.21	0.00	0.03
4	Other Transportable Goods	22.40	351.85	354.38	370.57	-0.71	-5.05	-0.18	-1.41
5	Metal Product, Machinery & Equipment	8.72	389.55	388.13	364.76	0.37	6.80	0.04	0.72

Main contributors to month-on-month and year-on-year percentage changes are given below and detail is given in **Annexure-C**.

1. **MONTH-ON-MONTH:** Top few commodities which varied from previous month are given below:

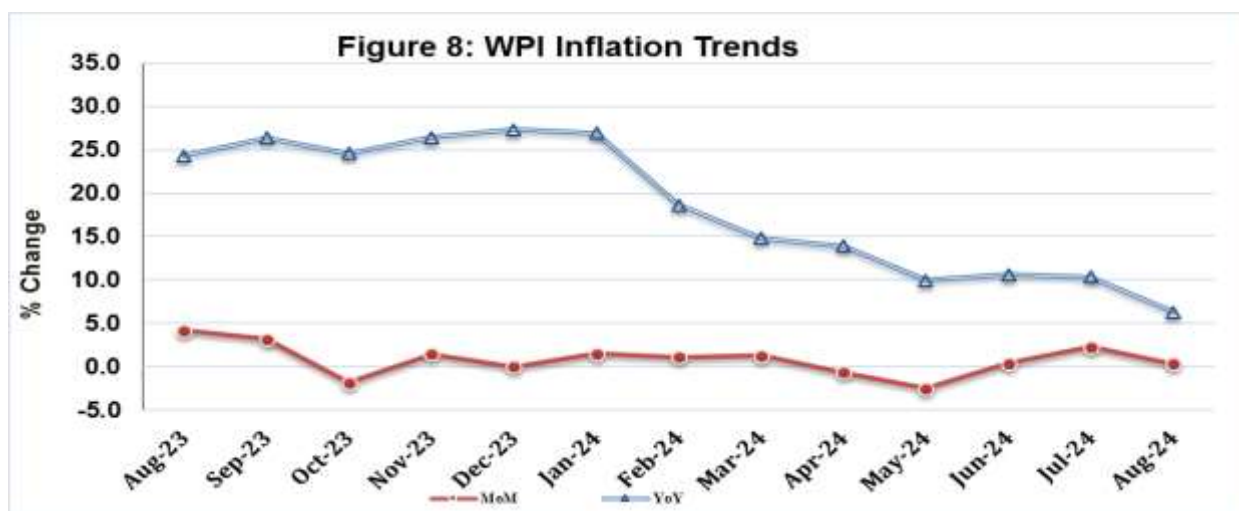
Increased: Raw Animal Materials / Wool (25.19%), Hard Board (25.00%), Vegetables (21.49%), Printing Paper (18.20%), Poultry (16.70%), Eggs (14.12%), Bed Sheets (12.14%), Maize (10.23%), Other Cereal Flour (5.64%), Mobil Oil (5.43%), Cotton Seeds (4.93%), Readymade Garments (4.34%), Millet / Bajra (4.32%), Plastic Products (4.28%), Auto Tyres (3.81%), Synthetic Carpets (3.33%), Timber (2.95%), Sorghum / Jowar (2.75%), Fertilizers (2.21%), Electrical Energy (2.09%), Vegetable Ghee (1.98%), Cement (1.97%) and Pulses (1.96%).

Decreased: Fresh Fruits (7.92%), Edible Roots / Potatoes (6.60%), Wheat Flour (5.03%), Kerosene Oil (4.74%), Diesel Oil (4.44%), Wheat (4.38%), Oil Cakes (2.80%), Fibre Crops (2.71%) and Motor Spirit (2.32%).

YEAR-ON-YEAR: Top few commodities which varied from previous year are given below:

Increased: Vegetables (78.31%), Natural Gas Liquefied (73.22%), Unmanufactured Tobacco (46.44%), Concrete Mixture (40.26%), Raw Animal Materials / Wool (32.91%), Cement (32.25%), Other Cereal Flour (31.99%), Processed Liquid Milk (29.39%), Fertilizers (29.09%), Engines & Motors (28.57%), Coal not Agglomerated (26.11%), Hard Board (25.00%) and Cultivators (24.50%).

Decreased: Wheat (38.69%), Wheat Flour (33.51%), Stimulant & Spice Crops (22.13%), Furnace Oil (17.55%), Kerosene Oil (14.96%), Diesel Oil (14.13%), Chemicals (12.34%), Spices (11.14%), Other Oil Seeds (8.61%), Vegetable Oils Refined (7.15%), Motor Spirit (6.41%) and Sugar Refined (6.02%).



Annexure A:CPI (Urban) Index Numbers by Commodity Groups & Commodities (2015-16=100)

Item and Specification	Weight	Index Numbers			% Change in Aug 2024 over			
		Aug 24	Jul 24	Aug 23	Jul 2024	Aug 2023		
General	100.0000	259.30	258.59	232.12	+	0.27	+	11.71
Food and non-alcoholic Beverage	30.4215	280.27	276.10	269.77	+	1.51	+	3.89
01 Wheat	0.6120	232.01	240.17	366.07	-	3.40	-	36.62
02 Wheat flour	3.0075	240.52	250.19	367.30	-	3.87	-	34.52
03 Wheat products	0.0936	294.24	295.36	322.66	-	0.38	-	8.81
04 Besan	0.0830	273.29	260.58	208.38	+	4.88	+	31.15
05 Rice	1.1804	313.42	310.37	333.77	+	0.98	-	6.10
06 Bakery and confectionary	0.4770	260.50	259.67	256.80	+	0.32	+	1.44
07 Nimco	0.1224	288.04	287.62	267.22	+	0.15	+	7.79
08 Meat	2.0411	313.03	309.95	262.96	+	0.99	+	19.04
09 Chicken	1.3631	313.44	275.86	290.25	+	13.62	+	7.99
10 Fish	0.3855	195.22	193.90	151.36	+	0.68	+	28.98
11 Milk fresh	7.1070	258.57	255.33	234.88	+	1.27	+	10.09
12 Milk products	0.6407	262.96	259.85	238.70	+	1.20	+	10.16
13 Milk powder	0.3106	301.95	301.19	243.18	+	0.25	+	24.17
14 Eggs	0.5083	328.38	292.17	334.61	+	12.39	-	1.86
15 Butter	0.0932	375.71	375.60	346.39	+	0.03	+	8.46
16 Mustard oil	0.0120	285.15	283.24	302.99	+	0.67	-	5.89
17 Cooking oil	1.1016	304.74	303.60	343.76	+	0.38	-	11.35
18 Vegetable ghee	1.0324	309.40	306.02	333.36	+	1.10	-	7.19
19 Dry fruits	0.3299	282.43	281.92	233.22	+	0.18	+	21.10
20 Fresh fruits	1.4363	215.89	248.43	169.56	-	13.10	+	27.32
21 Pulse masoor	0.1624	221.18	222.45	191.40	-	0.57	+	15.56
22 Pulse moong	0.1697	211.09	205.29	168.81	+	2.83	+	25.05
23 Pulse mash	0.1152	250.35	248.23	212.75	+	0.85	+	17.67
24 Pulse gram	0.1660	283.41	271.07	199.10	+	4.55	+	42.35
25 Gram whole	0.0912	301.84	290.74	266.89	+	3.82	+	13.10
26 Beans	0.0408	375.57	373.90	304.47	+	0.45	+	23.35
27 Potatoes	0.4496	396.38	385.21	374.78	+	2.90	+	5.76
28 Onions	0.5928	327.94	266.97	138.77	+	22.84	+	<u>136.32</u>
29 Tomatoes	0.3459	360.58	392.30	310.12	-	8.09	+	16.27
30 Fresh vegetables	1.5306	343.82	306.29	194.96	+	12.25	+	<u>76.35</u>
31 Sugar	1.1130	233.94	233.90	242.80	+	0.02	-	3.65
32 Gur	0.0379	240.21	237.74	254.61	+	1.04	-	5.66
33 Honey	0.1017	188.88	187.54	173.05	+	0.71	+	9.15
34 Sweetmeat	0.3535	299.43	298.83	276.02	+	0.20	+	8.48
35 Ice cream	0.1044	199.33	199.33	196.84	+	0.00	+	1.26
36 Condiments and Spices	1.3340	324.02	321.67	312.26	+	0.73	+	3.77
37 Dessert preparation	0.0419	262.83	264.66	263.17	-	0.69	-	0.13
38 Tea	0.8427	332.73	332.73	342.05	+	0.00	-	2.72
39 Beverages	0.8906	250.41	249.63	226.62	+	0.31	+	10.50
Alcoholic Beverages, Tobacco	0.8540	407.24	407.50	380.50	-	0.06	+	7.03
40 Cigarettes	0.7167	405.76	407.26	383.94	-	0.37	+	5.68
41 Pan prepared	0.1373	414.94	408.73	362.55	+	1.52	+	14.45
Clothing and footwear	8.0096	236.21	235.24	202.60	+	0.41	+	16.59
42 Cotton cloth	2.2227	279.69	279.49	225.25	+	0.07	+	24.17
43 Woollen cloth	0.8361	225.56	224.88	199.67	+	0.30	+	12.97
44 Readymade garments	1.3196	205.00	202.48	191.32	+	1.24	+	7.15
45 Woollen readymade garments	0.4307	230.68	230.68	187.07	+	0.00	+	23.31
46 Tailoring	1.0741	227.53	227.71	203.96	-	0.08	+	11.56
47 Hosiery	0.4070	226.45	218.98	198.09	+	3.41	+	14.32
48 Dopatta	0.1713	191.92	188.43	170.38	+	1.85	+	12.64
49 Cleaning and laundering	0.0665	255.72	255.48	245.32	+	0.09	+	4.24
50 Footwear	1.4816	219.63	219.61	186.92	+	0.01	+	17.50
Housing, Water, Elec., Gas and other Fuels	27.0332	243.39	246.75	188.75	-	1.36	+	28.95
51 House rent	19.2558	164.08	164.08	155.70	+	0.00	+	5.38
52 Construction input items	0.3765	266.39	265.27	256.40	+	0.42	+	3.90
53 Construction wage rates	0.2025	215.95	215.78	208.16	+	0.08	+	3.74
54 Water supply	0.5269	201.62	201.12	196.07	+	0.25	+	2.83
55 Garbage collection	0.1064	250.31	250.31	232.54	+	0.00	+	7.64
56 Electricity charges	4.5562	284.46	304.07	269.77	-	6.45	+	5.45
57 Gas charges	1.0807	1479.08	1479.08	353.22	+	0.00	+	<u>318.74</u>
58 Liquefied Hydrocarbons	0.5064	321.05	325.93	293.34	-	1.50	+	9.45

Annexure A:CPI (Urban) Index Numbers by Commodity Groups & Commodities (2015-16=100)

Item and Specification	Weight	Index Numbers			% Change in Aug 2024 over			
		Aug 24	Jul 24	Aug 23	Jul 2024	Aug 2023		
59 Solid Fuel	0.4218	204.49	203.51	185.07	+	0.48	+	10.49
<i>Furnishing and household equipment</i>	4.0937	259.86	259.61	243.00	+	0.10	+	6.94
60 Furniture and furnishing	0.4750	247.94	247.48	216.34	+	0.19	+	14.61
61 Carpets	0.0308	149.43	149.02	145.08	+	0.28	+	3.00
62 Household textiles	0.3420	185.82	185.25	169.11	+	0.31	+	9.88
63 Household equipments	1.0032	256.45	255.56	243.38	+	0.35	+	5.37
64 Plastic products	0.0536	212.01	209.84	191.57	+	1.03	+	10.67
65 Major tools & equipments	0.0084	232.35	230.32	210.49	+	0.88	+	10.39
66 Washing soap/detergents/match	1.4112	326.03	326.67	308.24	-	0.20	+	5.77
67 Household servant	0.7695	191.26	190.67	180.00	+	0.31	+	6.26
<i>Health</i>	2.3098	253.98	251.47	213.56	+	1.00	+	18.93
68 Drugs and medicines	1.0735	269.05	265.47	221.71	+	1.35	+	21.35
69 Therapeutic Appliances and Equipments	0.0054	150.70	150.51	139.45	+	0.13	+	8.07
70 Doctor (MBBS) clinic fee	0.4044	319.39	316.61	273.23	+	0.88	+	16.89
71 Dental services	0.0156	206.69	206.48	160.42	+	0.10	+	28.84
72 Medical tests	0.2367	195.40	194.30	178.83	+	0.57	+	9.27
73 Hospitals services	0.5742	206.15	205.14	172.78	+	0.49	+	19.31
<i>Transport</i>	6.1368	305.69	307.43	296.49	-	0.57	+	3.10
74 Motor vehicles	0.8097	259.33	259.11	256.35	+	0.08	+	1.16
75 Motor vehicle accessories	0.1941	259.13	258.64	247.59	+	0.19	+	4.66
76 Motor fuel	2.9088	359.75	366.26	376.78	-	1.78	-	4.52
77 Mechanical services	0.4290	224.23	222.54	213.01	+	0.76	+	5.27
78 Motor vehicle tax	0.0482	399.23	148.53	148.53	+	<u>168.79</u>	+	<u>168.79</u>
79 Transport services	1.7470	259.76	262.52	211.41	-	1.05	+	22.87
<i>Communication</i>	2.3536	138.30	138.28	123.77	+	0.01	+	11.74
80 Postal services	0.0190	209.23	209.03	201.18	+	0.10	+	4.00
81 Communication apparatus	0.4524	188.35	188.25	183.92	+	0.05	+	2.41
82 Communication Services	1.8822	125.55	125.55	108.53	+	0.00	+	15.68
<i>Recreation and culture</i>	1.7301	259.63	256.42	245.05	+	1.25	+	5.95
83 Recreation and culture	0.6478	153.29	153.19	147.42	+	0.07	+	3.98
84 Text books	0.6655	332.44	332.44	314.57	+	0.00	+	5.68
85 Newspapers	0.0716	211.87	211.87	209.69	+	0.00	+	1.04
86 stationery	0.3452	328.70	312.81	301.56	+	5.08	+	9.00
<i>Education</i>	4.8807	195.37	194.55	177.89	+	0.42	+	9.83
87 Education	4.8807	195.37	194.55	177.89	+	0.42	+	9.83
<i>Restaurants and hotels</i>	7.4050	266.75	265.28	247.58	+	0.55	+	7.74
88 Readymade food	5.5235	271.68	270.11	259.88	+	0.58	+	4.54
89 Marriage Hall Charges	1.7514	258.50	257.27	215.51	+	0.48	+	19.95
90 Accommodation Services	0.1301	168.39	168.37	157.21	+	0.01	+	7.11
<i>Misc. goods and services</i>	4.7720	283.85	281.53	257.91	+	0.82	+	10.06
91 Personal Grooming Services	0.8001	250.28	248.76	220.10	+	0.61	+	13.71
92 Electrical Appliances for Per	0.0465	162.29	162.07	156.81	+	0.14	+	3.49
93 Appliances/Articles/Products	2.9807	263.65	263.26	244.45	+	0.15	+	7.85
94 Personal Effects n.e.c.	0.9447	382.01	372.80	337.36	+	2.47	+	13.24

Annexure B:CPI (Rural) Index Numbers by Commodity Groups & Commodities (2015-16=100)

Item and Specification	Weight	Index Numbers			% Change in Aug 2024 over			
		Aug 24	Jul 24	Aug 23	Jul 2024	Aug 2023		
General	100.0000	266.89	265.43	250.06	+	0.55	+	6.73
Food and non-alcoholic Beverage	40.8668	281.23	277.35	278.73	+	1.40	+	0.90
01 Wheat	3.4736	240.76	241.78	360.98	-	0.42	-	33.30
02 Wheat Flour	3.4297	240.42	251.81	366.78	-	4.52	-	34.45
03 Wheat Products	0.1068	297.80	299.86	311.99	-	0.69	-	4.55
04 Besan	0.0728	272.92	261.32	223.11	+	4.44	+	22.33
05 Rice	1.5501	418.49	417.50	429.06	+	0.24	-	2.46
06 Bakery and Confectionary	0.3702	304.70	304.47	281.43	+	0.08	+	8.27
07 Nimco	0.0774	297.78	297.35	265.74	+	0.14	+	12.06
08 Meat	1.7146	320.11	313.99	263.49	+	1.95	+	21.49
09 Chicken	1.4641	328.73	274.65	302.80	+	19.69	+	8.56
10 Fish	0.2640	213.63	212.73	172.10	+	0.42	+	24.13
11 Milk fresh	10.3803	251.11	249.36	228.70	+	0.70	+	9.80
12 Milk products	0.9624	252.44	248.76	226.04	+	1.48	+	11.68
13 Milk powder	0.1062	274.26	272.34	213.56	+	0.71	+	28.42
14 Eggs	0.5665	311.89	272.92	321.71	+	14.28	-	3.05
15 Butter	0.3333	283.54	277.11	224.78	+	2.32	+	26.14
16 Mustard oil	0.0136	300.73	299.05	316.52	+	0.56	-	4.99
17 Cooking oil	0.6011	327.73	326.07	359.89	+	0.51	-	8.94
18 Vegetable ghee	2.3764	334.50	331.64	359.11	+	0.86	-	6.85
19 Dry fruits	0.2496	322.00	321.48	276.18	+	0.16	+	16.59
20 Fresh fruits	1.4505	226.73	273.48	181.23	-	17.09	+	25.11
21 Pulse Masoor	0.2076	240.88	239.43	203.65	+	0.61	+	18.28
22 Pulse Moong	0.2510	233.07	226.33	180.03	+	2.98	+	29.46
23 Pulse Mash	0.1465	254.92	250.25	217.28	+	1.87	+	17.32
24 Pulse Gram	0.2751	285.58	271.15	205.18	+	5.32	+	39.19
25 Gram Whole	0.1116	301.02	291.51	278.59	+	3.26	+	8.05
26 Beans	0.0896	405.39	403.34	310.60	+	0.51	+	30.52
27 Potatoes	0.7437	445.40	439.45	405.99	+	1.35	+	9.71
28 Onions	0.8965	307.32	261.05	125.81	+	17.72	+	<u>144.27</u>
29 Tomatoes	0.5069	303.66	382.26	286.66	-	20.56	+	5.93
30 Fresh Vegetables	2.0947	314.29	264.85	199.79	+	18.67	+	<u>57.31</u>
31 Sugar	2.0296	234.12	235.35	242.55	-	0.52	-	3.48
32 Gur	0.1522	247.54	246.01	249.98	+	0.62	-	0.98
33 Honey	0.0296	192.31	189.85	175.02	+	1.30	+	9.88
34 Sweetmeat	0.3967	281.10	280.92	249.27	+	0.06	+	12.77
35 Ice Cream	0.0568	199.34	199.34	192.30	+	0.00	+	3.66
36 Condiments and Spices	1.4919	296.80	292.26	281.02	+	1.55	+	5.62
37 Dessert Preparation	0.0133	268.52	268.52	263.98	+	0.00	+	1.72
38 Tea	1.2566	333.85	333.85	335.84	+	0.00	-	0.59
39 Beverages	0.5537	241.58	240.34	214.03	+	0.52	+	12.87
Alcoholic Beverages, Tobacco	1.2786	360.75	359.15	338.23	+	0.45	+	6.66
40 Cigarettes	1.2364	361.45	359.89	339.70	+	0.43	+	6.40
41 Pan Prepared	0.0422	340.15	337.67	295.22	+	0.73	+	15.22
Clothing and footwear	9.4826	255.85	254.73	216.56	+	0.44	+	18.14
42 Cotton Cloth	2.8381	287.45	285.70	235.37	+	0.61	+	22.13
43 Woollen Cloth	1.0959	248.91	248.59	209.33	+	0.13	+	18.91
44 Readymade Garments	1.1345	226.20	224.21	209.44	+	0.89	+	8.00
45 Woollen Readymade Garments	0.5401	268.35	268.35	193.86	+	0.00	+	38.42
46 Tailoring	1.2999	237.78	236.76	212.27	+	0.43	+	12.02
47 Hosiery	0.4322	336.82	333.92	296.86	+	0.87	+	13.46
48 Dopatta	0.2078	238.78	238.22	205.65	+	0.24	+	16.11
49 Cleaning and Laundering	0.0176	251.35	250.05	243.72	+	0.52	+	3.13
50 Footwear	1.9165	222.95	222.76	189.18	+	0.09	+	17.85
Housing, Water, Elec., Gas and other Fuels	18.4853	222.68	226.09	205.13	-	1.51	+	8.56
51 House Rent	8.6110	170.84	170.84	159.54	+	0.00	+	7.08
52 Construction Input Items	0.6306	247.99	245.34	216.52	+	1.08	+	14.53
53 Construction Wage Rates	0.2526	233.88	232.29	213.77	+	0.68	+	9.41
54 Water Supply	0.0645	292.59	292.59	271.24	+	0.00	+	7.87
55 Garbage Collection	0.0080	190.06	190.06	177.71	+	0.00	+	6.95
56 Electricity Charges	3.4431	284.46	304.07	269.77	-	6.45	+	5.45
57 Liquefied Hydrocarbons	0.9994	303.22	303.59	268.48	-	0.12	+	12.94
58 Solid Fuel	4.4761	251.78	251.16	225.99	+	0.25	+	11.41

Annexure B:CPI (Rural) Index Numbers by Commodity Groups & Commodities (2015-16=100)

Item and Specification	Weight	Index Numbers			% Change in Aug 2024 over			
		Aug 24	Jul 24	Aug 23	Jul 2024	Aug 2023		
<i>Furnishing and household equipments</i>	4.1031	285.81	285.06	256.88	+	0.26	+	11.26
59 Furniture and Furnishing	0.5786	272.15	270.69	223.49	+	0.54	+	21.77
60 Household Textiles	0.4382	223.52	223.16	193.96	+	0.16	+	15.24
61 Household Equipments	1.2774	281.99	281.05	256.01	+	0.33	+	10.15
62 Plastic Products	0.0776	277.30	274.62	238.35	+	0.98	+	16.34
63 Major Tools and Equipments	0.0324	229.59	225.90	208.56	+	1.63	+	10.08
64 Washing Soaps, Detergents and	1.6989	310.85	310.55	286.89	+	0.10	+	8.35
<i>Health</i>	3.5141	247.30	245.51	212.04	+	0.73	+	16.63
65 Drugs and Medicines	1.5792	286.60	282.99	240.15	+	1.28	+	19.34
66 Doctor Clinic Fee	0.5128	287.78	287.78	256.46	+	0.00	+	12.21
67 Dental Services	0.0181	197.58	191.38	183.94	+	3.24	+	7.42
68 Medical Tests	0.3967	219.02	218.28	193.28	+	0.34	+	13.32
69 Hospitals Services	1.0073	177.11	176.93	153.26	+	0.10	+	15.56
<i>Transport</i>	5.5580	317.76	321.06	307.67	-	1.03	+	3.28
70 Motor Vehicles	0.7305	193.07	193.06	192.54	+	0.01	+	0.28
71 Motor Vehicles Accessories	0.1572	265.38	263.41	252.46	+	0.75	+	5.12
72 Motor Fuels	2.4932	361.32	368.75	381.27	-	2.01	-	5.23
73 Mechanical Services	0.3645	228.35	228.35	219.57	+	0.00	+	4.00
74 Motor Vehicle Tax	0.0174	342.03	150.93	150.93	+	126.61	+	126.61
75 Transport Services	1.7952	330.52	332.43	276.55	-	0.57	+	19.52
<i>Communication</i>	1.9940	128.21	128.09	110.90	+	0.09	+	15.61
76 Postal Services	0.0070	179.32	179.32	179.32	+	0.00	+	0.00
77 Communication Apparatus	0.3362	158.82	158.13	150.31	+	0.44	+	5.66
78 Communication Services	1.6508	121.76	121.76	102.58	+	0.00	+	18.70
<i>Recreation and culture</i>	1.3764	299.91	297.11	270.46	+	0.94	+	10.89
79 Recreation and Culture	0.4763	229.89	227.82	211.71	+	0.91	+	8.59
80 Text Books	0.5047	360.44	360.44	327.78	+	0.00	+	9.96
81 Newspapers	0.0230	242.52	242.52	242.52	+	0.00	+	0.00
82 Stationery	0.3724	310.99	303.26	269.63	+	2.55	+	15.34
<i>Education</i>	2.1342	220.36	217.63	179.23	+	1.25	+	22.95
83 Education	2.1342	220.36	217.63	179.23	+	1.25	+	22.95
<i>Restaurants and hotels</i>	6.1895	278.98	276.60	244.66	+	0.86	+	14.03
84 Readymade Food	3.8001	301.19	298.43	272.11	+	0.92	+	10.69
85 Marriage Hall Charges	2.2525	251.57	249.69	206.59	+	0.75	+	21.77
86 Accommodation Services	0.1369	113.40	113.40	108.81	+	0.00	+	4.22
<i>Misc. goods and services</i>	5.0174	302.62	298.25	266.63	+	1.47	+	13.50
87 Personal Grooming Services	1.5363	298.65	297.52	272.81	+	0.38	+	9.47
88 Appliances/Articles/Products	2.2746	251.20	249.71	221.83	+	0.60	+	13.24
89 Personal Effects n.e.c.	1.2065	404.59	390.68	343.21	+	3.56	+	17.88

Annexure C: Wholesale Price Indices by Major Groups & Commodities (2015-16=100)

Item and Specification	Weight	Index Numbers			% Change in Aug 2024 over			
		Aug 24	Jul 24	Aug 23	Jul 2024	Aug 2023		
General	100.0000	316.84	315.88	298.13	+	0.30	+	6.28
Agriculture Forestry & Fishery	25.7674	289.40	285.30	272.28	+	1.44	+	6.29
001 Wheat	0.6297	225.88	236.22	368.44	-	4.38	-	38.69
002 Maize	0.6764	270.59	245.47	242.56	+	10.23	+	11.56
003 Rice	2.4413	343.00	344.57	354.61	-	0.46	-	3.27
004 Sorghum / Jowar	0.0214	295.84	287.92	304.19	+	2.75	-	2.74
005 Millet / Bajra	0.0374	285.32	273.50	301.59	+	4.32	-	5.39
006 Vegetables	1.2441	487.47	401.23	273.38	+	21.49	+	<u>78.31</u>
007 Fresh Fruits	1.5144	243.52	264.47	207.53	-	7.92	+	17.34
008 Dry Fruits	0.2478	351.82	352.37	317.85	-	0.16	+	10.69
009 Cotton Seeds	1.1511	185.69	176.96	184.48	+	4.93	+	0.66
010 Other Oil Seeds	0.0722	275.77	278.06	301.75	-	0.82	-	8.61
011 Edible Roots / Potatoes	0.2540	494.50	529.44	504.48	-	6.60	-	1.98
012 Stimulant & Spice Crops	0.1634	486.19	488.62	624.34	-	0.50	-	22.13
013 Pulses	0.4901	297.91	292.19	258.38	+	1.96	+	15.30
014 Sugar Crops	1.0725	312.10	312.10	291.76	+	0.00	+	6.97
015 Fibre Crops	5.3169	333.77	343.07	341.39	-	2.71	-	2.23
016 Unmanufactured Tobacco	0.0742	584.48	583.51	399.12	+	0.17	+	46.44
017 Poultry	0.5633	309.94	265.58	283.76	+	16.70	+	9.23
018 Raw Milk from Bovine Animals	7.0279	245.20	242.17	222.57	+	1.25	+	10.17
019 Eggs	0.5034	333.44	292.19	325.35	+	14.12	+	2.49
020 Raw Animal Materials / Wool	0.0351	179.80	143.62	135.28	+	25.19	+	32.91
021 Hides, Skins & Fur Skins, Raw	0.4834	55.29	55.39	52.80	-	0.18	+	4.72
022 Fuel Wood in Logs	0.0179	184.13	183.92	176.86	+	0.11	+	4.11
023 Fish Live Fresh or Chilled	1.7295	217.16	216.83	192.81	+	0.15	+	12.63
Ores/Minerals, Elec., Gas & Water	12.0069	375.03	371.85	266.66	+	0.86	+	40.64
024 Coal not Agglomerated	0.7508	227.51	227.51	180.41	+	0.00	+	26.11
025 Natural Gas Liquefied	5.7065	418.61	418.82	241.66	-	0.05	+	<u>73.22</u>
026 Salt & Pure Sodium Chloride	0.0584	405.11	405.09	335.18	+	0.00	+	20.86
027 Electrical Energy	5.4912	349.59	342.42	303.69	+	2.09	+	15.11
Food, Beverages, Tobacco, Textil	31.1122	271.54	271.64	260.87	-	0.04	+	4.09
Food Products, Beverages & Tobacco	20.0718	285.48	286.48	277.79	-	0.35	+	2.77
028 Meat of Animals	3.4559	302.68	301.33	259.80	+	0.45	+	16.51
029 Vegetables & Fruit Juice	0.0058	239.61	239.27	233.73	+	0.14	+	2.52
030 Dried Fruits & Nuts	0.1733	380.58	377.98	340.45	+	0.69	+	11.79
031 Fruit Juices	0.3880	270.45	270.25	241.16	+	0.07	+	12.15
032 Vegetable Oils Refined	1.9242	271.75	271.50	292.69	+	0.09	-	7.15
033 Vegetable Ghee	1.5632	319.36	313.17	339.18	+	1.98	-	5.84
034 Oil Cakes	0.9611	262.99	270.56	263.91	-	2.80	-	0.35
035 Processed Liquid Milk	4.4437	317.58	317.05	245.44	+	0.17	+	29.39
036 Milk & Cream in Solid Form	0.0316	290.70	289.50	256.39	+	0.41	+	13.38
037 Ice Cream	0.0047	200.56	200.56	198.75	+	0.00	+	0.91
038 Dairy Products N.E.C	0.0117	324.08	314.86	255.40	+	2.93	+	26.89
039 Wheat Flour	2.3034	242.88	255.75	365.27	-	5.03	-	33.51
040 Other Cereal Flour	0.0604	293.66	277.98	222.48	+	5.64	+	31.99
041 Sugar Refined	1.7975	236.83	239.59	252.00	-	1.15	-	6.02
042 Chocolate	0.0139	122.88	122.88	102.83	+	0.00	+	19.50
043 Sugar Confectionary	0.0738	236.84	236.84	231.02	+	0.00	+	2.52
044 Coffee & Tea	0.7303	273.88	270.04	254.91	+	1.42	+	7.44
045 Spices	0.1449	327.95	331.14	369.07	-	0.96	-	11.14
046 Other Food Products	0.0336	235.50	235.50	218.68	+	0.00	+	7.69
047 Mineral Water	0.0207	206.25	206.39	209.49	-	0.07	-	1.55
048 Beverages	0.6303	262.44	261.21	252.61	+	0.47	+	3.89
049 Tobacco Products	1.2998	280.52	280.52	259.58	+	0.00	+	8.07
Textiles & Apparels	10.3289	250.12	248.51	233.70	+	0.65	+	7.03
050 Cotton Yarn	5.2491	239.61	239.61	239.61	+	0.00	+	0.00
051 Nylon Yarn	0.1719	95.24	95.24	95.24	+	0.00	+	0.00
052 Blended Yarn	0.1689	148.12	148.12	148.12	+	0.00	+	0.00
053 Woven Fabrics	0.0128	255.78	255.78	221.40	+	0.00	+	15.53
054 Cotton Fabrics	0.6343	336.14	335.83	276.10	+	0.09	+	21.75
055 Other Fabrics	1.1016	256.89	256.81	211.53	+	0.03	+	21.44
056 Silk & Reyon Fabrics	0.7350	388.19	384.53	325.85	+	0.95	+	19.13
057 Towels	0.1235	199.92	199.92	193.20	+	0.00	+	3.48

Annexure C: Wholesale Price Indices by Major Groups & Commodities (2015-16=100)

Item and Specification	Weight	Index Numbers			% Change in Aug 2024 over	
		Aug 24	Jul 24	Aug 23	Jul 2024	Aug 2023
058 Blankets	0.0029	147.94	147.94	138.45	+ 0.00	+ 6.85
059 Bed Sheets	0.0913	187.69	167.37	164.56	+ 12.14	+ 14.06
060 Quilts	0.0019	234.52	234.52	203.36	+ 0.00	+ 15.32
061 Woollen Carpets	0.0383	177.15	173.86	166.01	+ 1.89	+ 6.71
062 Synthetic Carpets	0.0566	155.86	150.83	132.43	+ 3.33	+ 17.69
063 Hosiery Products	0.8832	198.48	198.12	188.38	+ 0.18	+ 5.36
064 Readymade Garments	1.0576	251.43	240.98	231.07	+ 4.34	+ 8.81
Leather Products	0.7115	188.92	188.92	177.88	+ 0.00	+ 6.21
065 Leather Without Hair	0.2973	182.58	182.58	169.84	+ 0.00	+ 7.50
066 Other Leather N.E.C	0.2567	164.62	164.62	153.47	+ 0.00	+ 7.27
067 Footwears	0.1575	240.49	240.49	232.83	+ 0.00	+ 3.29
Other Transportable Goods	22.3979	351.85	354.38	370.57	- 0.71	- 5.05
068 Timber	0.0165	237.23	230.43	212.44	+ 2.95	+ 11.67
069 Printing Paper	0.4279	265.00	224.19	260.23	+ 18.20	+ 1.83
070 Hard Board	0.1579	261.62	209.29	209.29	+ 25.00	+ 25.00
071 Motor Spirit	1.6268	375.16	384.07	400.85	- 2.32	- 6.41
072 Diesel Oil	5.4849	338.72	354.47	394.47	- 4.44	- 14.13
073 Kerosene Oil	0.2151	341.50	358.48	401.59	- 4.74	- 14.96
074 Furnace Oil	3.2664	596.76	604.82	723.77	- 1.33	- 17.55
075 Mobil Oil	0.7114	251.76	238.80	234.91	+ 5.43	+ 7.17
076 Chemicals	1.7720	272.48	274.83	310.82	- 0.86	- 12.34
077 Dyeing Material	0.1539	272.52	272.52	220.27	+ 0.00	+ 23.72
078 Fertilizers	2.8657	282.26	276.16	218.65	+ 2.21	+ 29.09
079 Pesticides	0.2763	194.46	194.42	184.54	+ 0.02	+ 5.38
080 Insecticides	0.1276	174.37	174.37	151.05	+ 0.00	+ 15.44
081 Paints & Varnishes	0.1916	271.19	271.19	257.02	+ 0.00	+ 5.51
082 Medicines	1.1428	343.85	335.78	303.11	+ 2.40	+ 13.44
083 Soaps & Detergents	0.8168	229.24	230.23	224.61	- 0.43	+ 2.06
084 Auto Tyres	0.2703	256.26	246.85	251.16	+ 3.81	+ 2.03
085 Plastic Products	0.4550	203.37	195.02	184.09	+ 4.28	+ 10.47
086 Glass sheets	0.2089	360.02	358.40	333.72	+ 0.45	+ 7.88
087 Other Glass Articles	0.1635	209.73	209.73	207.34	+ 0.00	+ 1.15
088 Ceramics & Sanitary Fixture	0.0244	211.19	211.19	190.58	+ 0.00	+ 10.81
089 Bricks, Blocks & Tiles	0.1566	201.49	199.15	177.68	+ 1.17	+ 13.40
090 Cement	1.8145	294.46	288.77	222.66	+ 1.97	+ 32.25
091 Bed Foam	0.0006	329.70	332.36	303.51	- 0.80	+ 8.63
092 Matches	0.0505	3323.96	3323.96	3291.67	+ 0.00	+ 0.98
Metal Product, Machinery & Equipment	8.7156	389.55	388.13	364.76	+ 0.37	+ 6.80
093 Steel Bar & Sheets	1.4615	350.01	355.04	359.37	- 1.42	- 2.60
094 Pipe Fittings	0.0780	455.71	455.71	405.47	+ 0.00	+ 12.39
095 Steel Products	0.3879	263.05	263.05	237.88	+ 0.00	+ 10.58
096 Engines & Motors	0.0046	186.89	186.89	145.36	+ 0.00	+ 28.57
097 Vacuum Pumps	0.0155	107.56	107.56	107.56	+ 0.00	+ 0.00
098 Air Conditioners	0.0049	311.25	310.06	312.51	+ 0.38	- 0.40
099 Cultivators	0.0551	351.39	351.39	282.23	+ 0.00	+ 24.50
100 Chuff Cutter	0.1293	504.72	504.72	504.72	+ 0.00	+ 0.00
101 Tractors	0.0028	320.14	320.14	274.86	+ 0.00	+ 16.47
102 Lathe Machines	0.0525	482.10	479.69	443.74	+ 0.50	+ 8.64
103 Concrete Mixture	0.0107	426.37	426.37	303.98	+ 0.00	+ 40.26
104 Fridge,WashM,SewM,Fans,Iron	1.1645	296.42	290.99	262.24	+ 1.87	+ 13.03
105 Electric Wires	0.0912	319.58	317.55	262.70	+ 0.64	+ 21.65
106 Lighting Equipments	1.4431	744.34	735.26	679.55	+ 1.23	+ 9.53
107 Radio & Television	0.1843	196.31	196.31	189.54	+ 0.00	+ 3.57
108 Motor Vehicles	0.0244	256.95	256.95	255.73	+ 0.00	+ 0.48
109 Motorcycles	0.2570	263.76	263.76	263.52	+ 0.00	+ 0.09
110 Bicycles	3.3483	318.93	318.93	298.39	+ 0.00	+ 6.88
