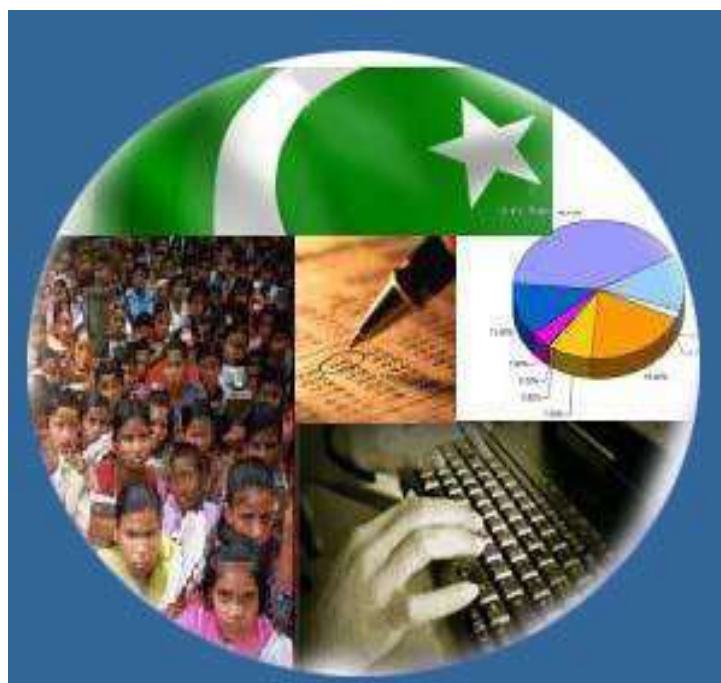




# Monthly Review on Price Indices



**September 2024**  
**(Base Year 2015-16)**

**Government of Pakistan**  
**Ministry of Planning, Development & Special Initiatives**  
**Pakistan Bureau of Statistics**  
**Islamabad**

## **PRICE STATISTICS TEAM**

<b>S#</b>	<b>Name</b>	<b>Designation</b>
1.	Dr. Naeem Uz Zafar	Chief Statistician
2.	Dr. Bahrawar Jan	Deputy Director General
3.	Mr. Naseer Ahmad	Director
4.	Dr. Ahtasham Gul	Chief Statistical Officer
5.	Mr. Adnan Shams	Statistical Officer
6.	Mr. Kashif Ali	Statistical Officer
7.	Miss. Umaira Zareen	Statistical Officer
8.	Mr. Umer Farooq	Statistical Assistant
9.	Mr. Ansar Mahmood	Statistical Assistant
10.	Mrs. Madiha Gulfraz	Statistical Assistant
12.	Mrs. Humail Fatima	Statistical Assistant
13.	Mr. Muhammad Asif	Statistical Assistant

## **IT & SOFTWARE TEAM**

1.	Mr. Muhammad Ehtesham	Director (DP)
2.	Mrs. Sobia Munawar	Director (DP)
3.	Mr. Arsalan Bashir	Data Processing Officer
4.	Mr. Muhammad Kibria	Data Processing Officer
5.	Mr. Muhammad Irfan Bajwa	Data Processing Assistant

## Inflation in Brief

- CPI inflation General**, decreased to 6.9% on year-on-year basis in September 2024 as compared to 9.6% in the previous month and 31.4% in September 2023. On month-on-month basis, it decreased by 0.5% in September 2024 as compared to an increase of 0.4% in the previous month and an increase of 2.0% in September 2023.
- CPI inflation Urban**, decreased to 9.3% on year-on-year basis in September 2024 as compared to 11.7% in the previous month and 29.7% in September 2023. On month-on-month basis, it decreased by 0.5% in September 2024 as compared to an increase of 0.3% in the previous month and an increase of 1.7% in September 2023.
- CPI inflation Rural**, decreased to 3.6% on year-on-year basis in September 2024 as compared to 6.7% in the previous month and 33.9% in September 2023. On month-on-month basis, it decreased by 0.5% in September 2024 as compared to an increase of 0.6% in the previous month and an increase of 2.5% in September 2023.
- SPI inflation** on YoY decreased to 9.2% in September 2024 as compared to 10.8% a month earlier and 32.0% in September 2023. On MoM basis, it increased by 0.2% in September 2024 as compared to a decrease of 0.3% a month earlier and an increase of 1.7% in September 2023.
- WPI inflation** on YoY basis decreased to 1.9% in September 2024 as compared to 6.3% a month earlier and an increase of 26.4% in September 2023. On MoM basis, it decreased by 1.1% in September 2024 as compared to an increase of 0.3% in the previous month and an increase of 3.1% in corresponding month of last year i.e. September 2023.
- Figures 1 and 2 show graphically the yearly data of Table 1.a for Urban and Rural CPI while Table 1.1 shows "Period Average" and "YoY" percentage changes in indices of three years.

Table 1.a General Inflation (%) (Base 2015-16)																		
PERIOD	CPI														SPI**		WPI	
	General				Food				Non-Food									
	National		Urban		Rural		Urban		Rural		Urban		Rural		YoY	MoM	YoY	MoM
YoY	MoM	YoY	MoM	YoY	MoM	YoY	MoM	YoY	MoM	YoY	MoM	YoY	MoM	YoY	MoM	YoY	MoM	
Dec-22	24.5	0.5	21.6	0.3	28.8	0.7	32.7	0.0	37.9	0.1	14.8	0.6	20.7	1.4	27.8	0.2	27.1	-0.7
Jan-23	27.6	2.9	24.4	2.4	32.3	3.6	39.0	3.9	45.2	5.7	15.6	1.2	20.9	1.5	30.5	1.3	28.5	1.8
Feb-23	31.5	4.3	28.8	4.5	35.6	4.0	41.9	4.3	47.0	3.9	20.8	4.7	25.3	4.1	33.6	3.7	36.4	8.2
Mar-23	35.4	3.7	33.0	3.9	38.9	3.5	47.1	5.6	50.2	4.5	24.1	2.7	28.5	2.4	40.4	5.8	37.5	4.7
Apr-23	36.4	2.4	33.5	2.0	40.7	3.0	46.8	3.4	52.2	4.2	24.9	1.0	29.9	1.6	42.1	2.7	33.4	0.1
May-23	38.0	1.6	35.1	1.5	42.2	1.7	48.1	1.9	52.4	1.4	26.6	1.2	32.5	2.0	43.0	1.3	32.8	1.0
Jun-23	29.4	-0.3	27.3	0.1	32.4	-0.8	40.8	0.1	41.5	-1.6	18.7	0.1	23.8	0.1	34.9	0.2	22.4	-0.3
Jul-23	28.3	3.5	26.3	3.6	31.3	3.3	40.2	3.7	41.3	3.5	17.3	3.5	22.0	3.0	29.3	2.8	23.1	2.5
Aug-23	27.4	1.7	25.0	1.6	30.9	1.9	38.8	0.6	40.6	0.8	16.3	2.4	22.0	3.1	27.9	4.1	24.3	4.2
<b>Sep-23</b>	<b>31.4</b>	<b>2.0</b>	<b>29.7</b>	<b>1.7</b>	<b>33.9</b>	<b>2.5</b>	<b>33.9</b>	<b>1.5</b>	<b>35.4</b>	<b>1.8</b>	<b>26.8</b>	<b>1.8</b>	<b>32.3</b>	<b>3.2</b>	<b>32.0</b>	<b>1.7</b>	<b>26.4</b>	<b>3.1</b>
Oct-23	26.8	1.0	25.5	1.1	28.7	0.9	28.9	0.6	28.6	0.7	23.1	1.4	28.8	1.1	34.2	0.2	24.6	-1.9
Nov-23	29.2	2.7	30.4	4.3	27.5	0.4	29.8	0.8	29.2	1.0	30.9	7.0	25.9	-0.2	30.6	3.3	26.4	1.4
Dec-23	29.7	0.8	30.9	0.7	27.9	1.0	28.8	-0.7	29.3	0.1	32.4	1.8	26.4	1.8	35.3	3.8	27.3	0.0
Jan-24	28.3	1.8	30.2	1.8	25.7	1.9	27.4	2.8	25.1	2.3	32.3	1.1	26.3	1.4	36.2	2.0	27.0	1.5
Feb-24	23.1	0.0	24.9	0.2	20.5	-0.3	20.2	-1.5	19.0	-1.1	28.2	1.5	22.1	0.6	30.4	-0.8	18.7	1.1
Mar-24	20.7	1.7	21.9	1.4	19.0	2.1	16.6	2.4	17.1	2.8	25.8	0.7	21.0	1.4	25.9	2.1	14.8	1.3
Apr-24	17.3	-0.4	19.4	-0.1	14.5	-0.9	11.3	-1.3	9.5	-2.6	25.6	0.8	20.0	0.8	21.6	-0.7	13.9	-0.7
May-24	11.8	-3.2	14.3	-2.8	8.2	-3.9	2.2	-6.3	-0.1	-7.4	23.6	-0.4	17.2	-0.4	15.3	-4.0	9.9	-2.5
Jun-24	12.6	0.5	14.9	0.6	9.3	0.3	2.6	0.4	1.3	-0.2	24.3	0.7	17.9	0.8	16.6	1.3	10.6	0.4
July-24	11.1	2.1	13.2	2.0	8.1	2.2	3.4	4.5	1.3	3.6	20.7	0.5	15.5	0.9	15.7	2.0	10.4	2.3
Aug-24	9.6	0.4	11.7	0.3	6.7	0.6	4.1	1.3	1.9	1.3	17.4	-0.4	11.9	-0.2	10.8	-0.3	6.3	0.3
<b>Sep-24</b>	<b>6.9</b>	<b>-0.5</b>	<b>9.3</b>	<b>-0.5</b>	<b>3.6</b>	<b>-0.5</b>	<b>1.7</b>	<b>-0.8</b>	<b>-0.9</b>	<b>-1.0</b>	<b>15.0</b>	<b>-0.3</b>	<b>8.4</b>	<b>-0.1</b>	<b>9.2</b>	<b>0.2</b>	<b>1.9</b>	<b>-1.1</b>

\*\* SPI for quintile 1. Digits 0.0\* are due to rounding off.

### Core inflation (NFNE)

7. Measured by **non-food non-energy Urban** decreased to 9.3% on (YoY) basis in September 2024 as compared to 10.2% in the previous month and 18.6% in September 2023. On (MoM) basis, it increased by 0.2% in September 2024 as compared to an increase of 0.4% in previous month and an increase of 1.0% in corresponding month of last year i.e. September, 2023.
8. Measured by **non-food non-energy Rural** decreased to 12.1% on (YoY) basis in September 2024 as compared to 14.4% in the previous month and 27.3% in September 2023. On (MoM) basis, it increased by 0.5% in September 2024 as compared to an increase of 0.6% in previous month and an increase of 2.6% in corresponding month of last year i.e. September 2023.

### Core inflation (Trimmed)

9. Measured by 20% **weighted trimmed mean Urban** decreased to 7.1% on (YoY) basis in September 2024 as compared to 8.0% in the previous month and 25.0% in September 2023. On (MoM) basis, it decreased by 0.1% in September 2024 as compared to an increase of 0.2% in the previous month and an increase of 1.1% in corresponding month of last year i.e. September 2023.
10. Measured by 20% **weighted trimmed mean Rural** decreased to 7.4% on (YoY) basis in September 2024 as compared to 9.6% in the previous month and 33.3% in September 2023. On (MoM) basis, it decreased by 0.1% in September 2024 as compared to an increase of 0.4% in the previous month and an increase of 1.7% in corresponding month of last year i.e. September 2023.

**Table 1.b Core Inflation (%) (Base 2015-16)**

Period	NFNE				Trimmed			
	Urban		Rural		Urban		Rural	
	YoY	MoM	YoY	MoM	YoY	MoM	YoY	MoM
Sep-23	18.6	1.0	27.3	2.6	25.0	1.1	33.3	1.7
Oct-23	18.5	1.2	26.7	1.0	24.6	0.6	30.4	0.7
Nov-23	18.6	0.9	25.9	1.4	22.9	0.1	27.9	0.5
Dec-23	18.2	0.8	25.1	0.9	23.3	0.3	28.0	0.7
Jan-24	17.8	1.1	24.6	1.2	22.1	1.0	25.8	1.2
Feb-24	15.5	0.3	21.9	0.4	16.0	0.3	21.3	0.4
Mar-24	12.8	0.1	20.0	0.8	14.8	0.6	18.4	0.9
Apr-24	13.1	2.1	19.3	2.0	13.4	0.5	15.0	0.6
May-24	12.3	0.4	17.0	0.5	11.0	-0.5	10.6	-0.9
June-24	12.2	0.6	17.0	0.9	10.3	0.6	11.0	0.5
July-24	11.7	0.7	16.9	1.1	10.3	1.2	11.3	1.7
Aug-24	10.2	0.4	14.4	0.6	8.0	0.2	9.6	0.4
Sep-24	9.3	0.2	12.1	0.5	7.1	-0.1	7.4	-0.1

**Table 1.1 Period Average and Y-o-Y % Change**

INDEX	Average July - September % Changes			September over September % Changes		
	2024-2025	2023-2024	2022-2023	2024-2025	2023-2024	2022-2023
CPI (National)	9.19	29.04	25.11	6.93	31.44	23.18
CPI (Urban)	11.37	26.98	23.66	9.29	29.74	21.20
CPI (Rural)	6.14	32.02	27.27	3.65	33.88	26.12
SPI	11.87	29.75	30.23	9.21	32.00	28.58
WPI	6.10	24.61	39.55	1.95	26.39	38.87

Figure 1: Urban Inflation - YoY, Special Indices

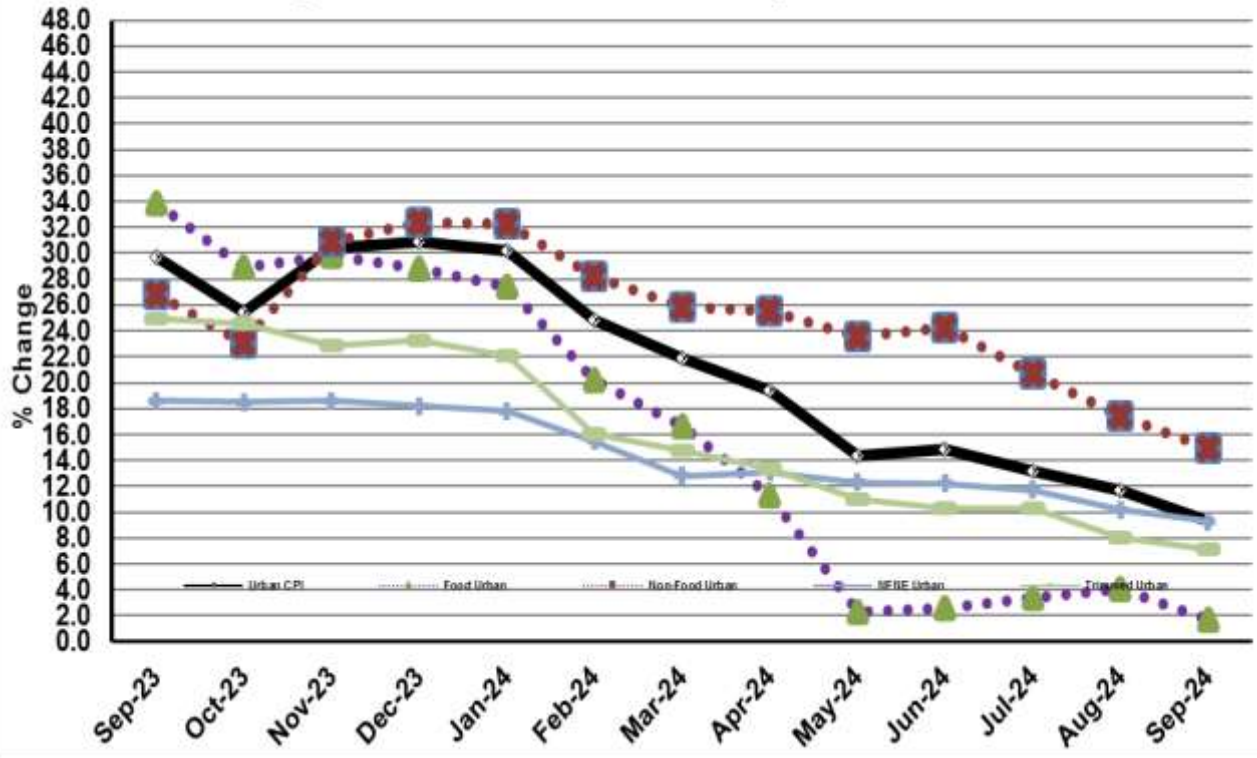


Figure 2: Rural Inflation - YoY, Special Indices

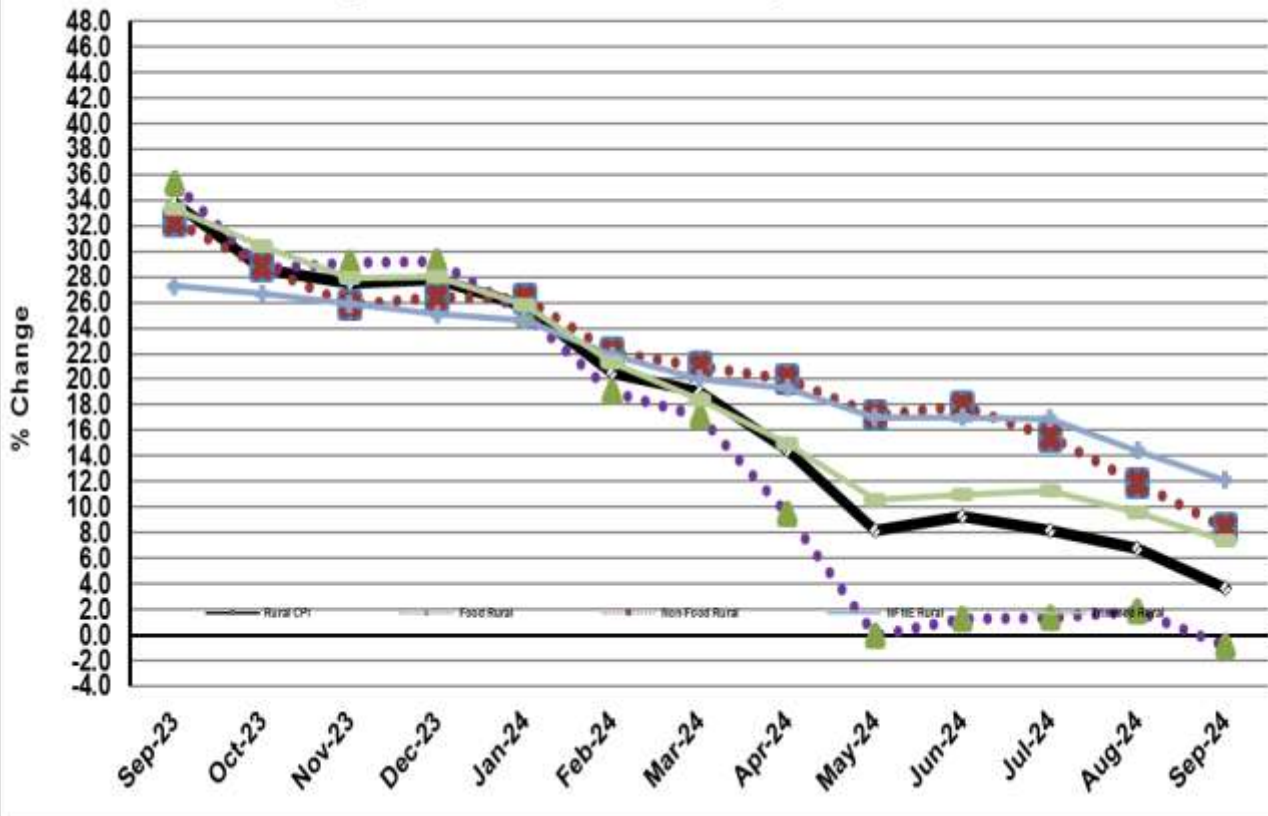


Figure 3: Urban Inflation - MoM, Special Indices

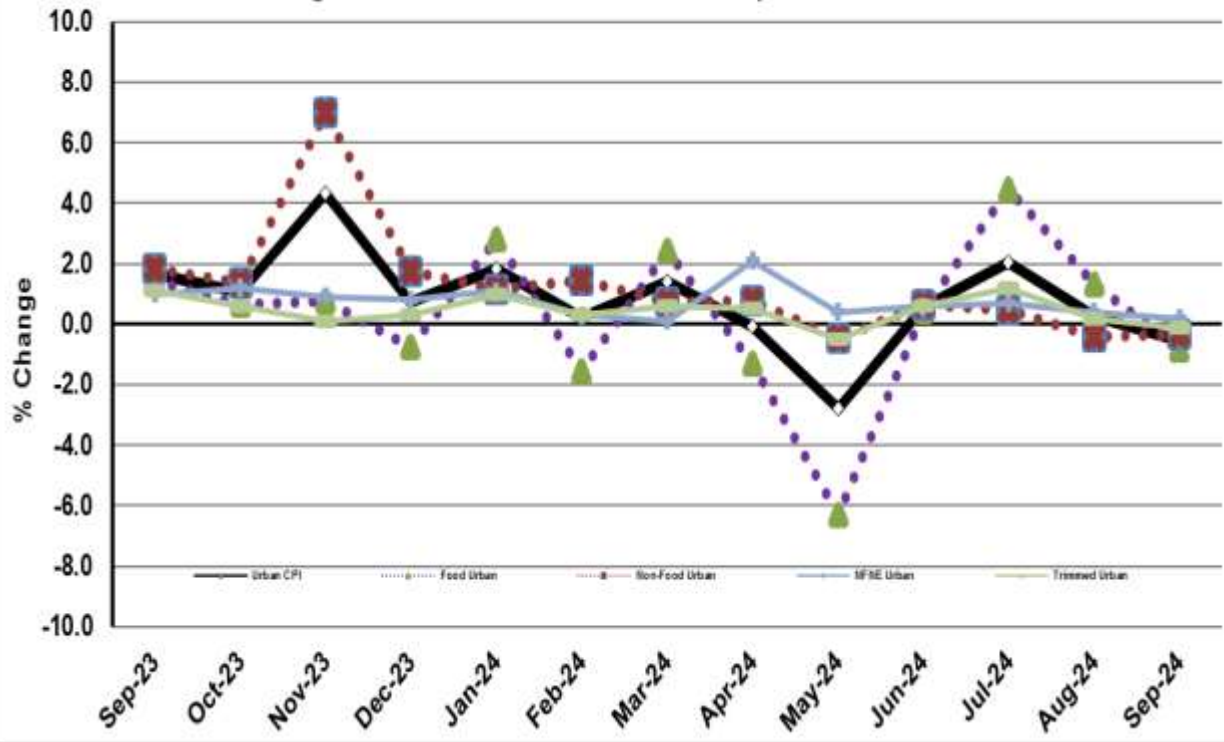


Figure 4: Rural Inflation - MoM, Special Indices

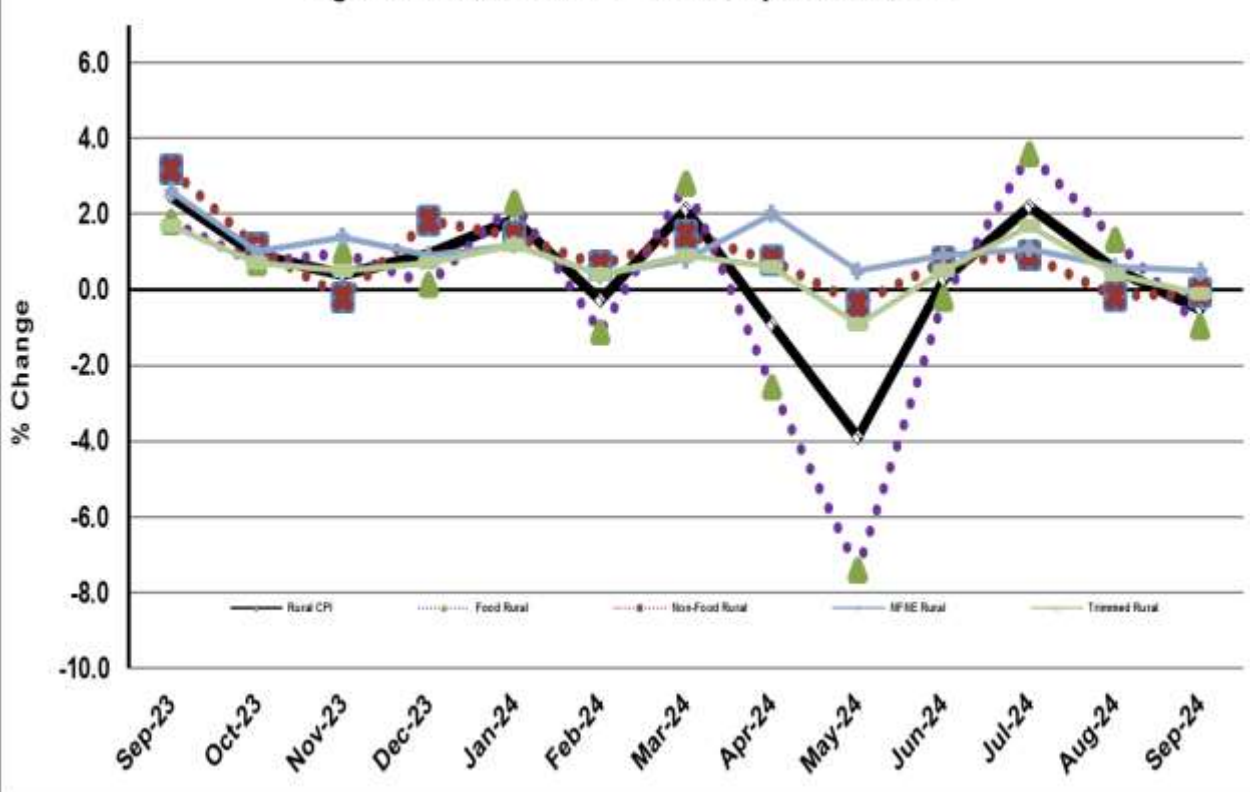


Figure 5: CPI YoY (National, Urban, Rural)

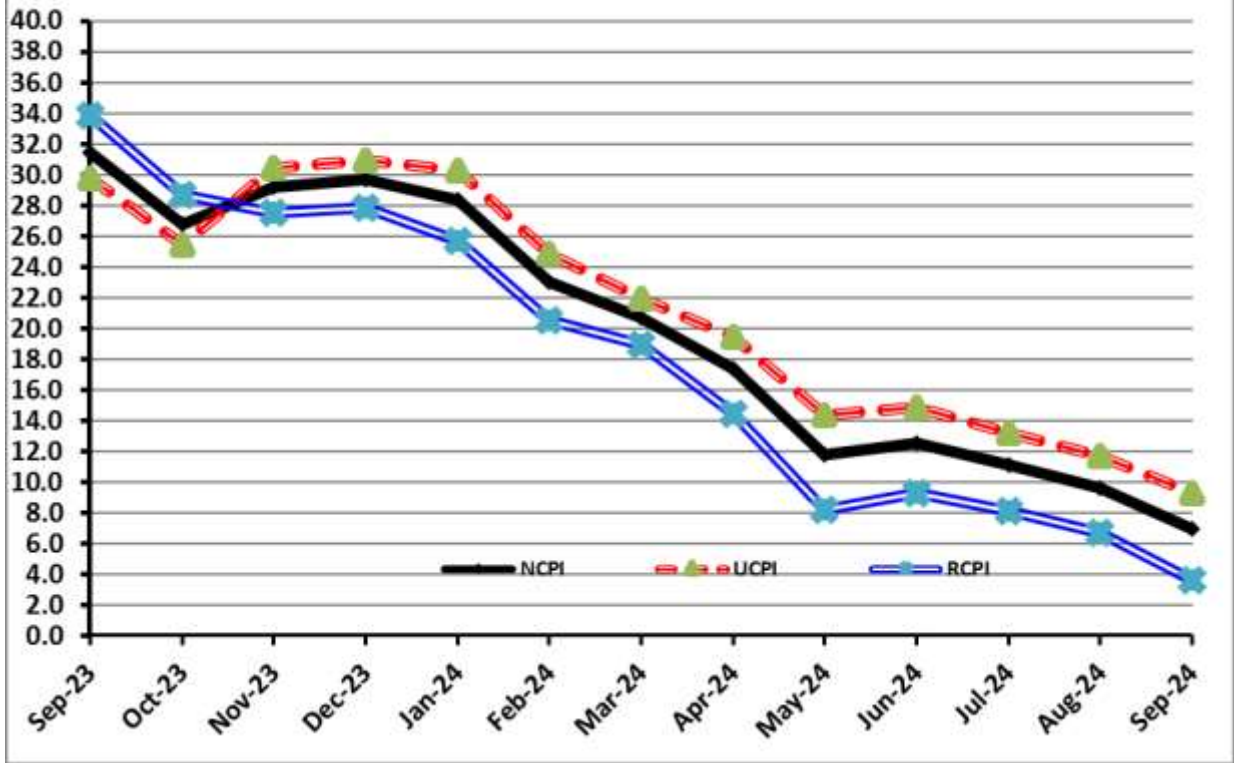
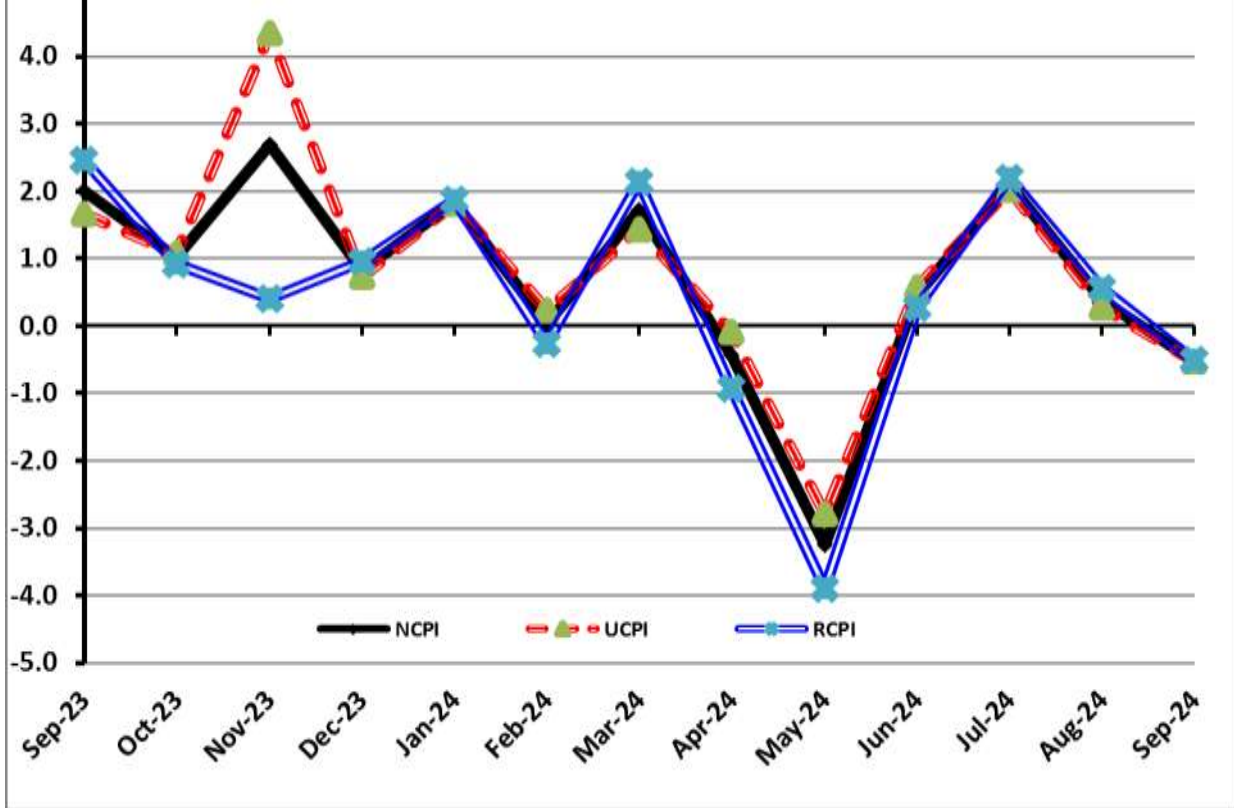


Figure 6: CPI MoM (National, Urban, Rural)



## I. National Consumer Price Index (N-CPI)

The **National Consumer Price Index** for **September 2024** is decreased by **0.52%** over **August 2024** and increased to **6.93** over corresponding month of the last year i.e. **September 2023**.

**Table 1: Consumer Price Index (National) by Group of Commodities and Services (Base 2015-16)**

No	Group	Group Weight (%)	Indices			% Change Sep 2024 Over		Impact (In % points) Sep 2024 Over	
			Sep 24	Aug 24	Sep 23	Aug 24	Sep 23	Aug 24	Sep 23
	<b>General</b>	<b>100.00</b>	<b>260.96</b>	<b>262.32</b>	<b>244.05</b>	<b>-0.52</b>	<b>6.93</b>	<b>-0.52</b>	<b>6.93</b>
1.	Food & Non-alcoholic Bev.	34.58	276.85	280.72	278.48	-1.38	-0.59	-0.51	-0.23
	<i>Non-perishable Food Items</i>	29.60	275.59	275.81	285.60	-0.08	-3.50	-0.02	-1.21
	<i>Perishable Food Items</i>	4.99	284.32	309.89	236.20	-8.25	20.37	-0.49	0.98
2.	Alcoholic Bev. & Tobacco	1.02	385.24	384.09	361.16	0.30	6.67	0.00	0.10
3.	Clothing & Footwear	8.60	246.11	244.84	213.05	0.52	15.52	0.04	1.16
4.	Housing, Water, Electricity, Gas & Fuels	23.63	235.52	236.93	194.86	-0.60	20.86	-0.13	3.94
5.	Furnishing & Household Equipment Maintenance	4.10	269.38	270.22	252.67	-0.31	6.62	-0.01	0.28
6.	Health	2.79	252.74	250.63	222.31	0.84	13.69	0.02	0.35
7.	Transport	5.91	304.28	310.22	328.11	-1.91	-7.26	-0.13	-0.58
8.	Communication	2.21	134.83	134.67	119.66	0.12	12.67	0.00	0.14
9.	Recreation & Culture	1.59	273.83	273.53	254.80	0.11	7.47	0.00	0.12
10.	Education	3.79	201.79	200.98	179.25	0.40	12.57	0.01	0.35
11.	Restaurants & Hotels	6.92	275.59	271.11	252.51	1.65	9.14	0.12	0.66
12.	Miscellaneous	4.87	295.01	291.56	262.92	1.19	12.21	0.06	0.64



## II. Urban Consumer Price Index (UCPI)

The Urban Consumer Price Index for **September 2024** is decreased by **0.53%** over **August 2024** and increased to **9.29%** over corresponding month of the last year i.e. **September 2023**.

**Table 2: Consumer Price Index (Urban) by Group of Commodities and Services (Base 2015-16)**

No	Group	Group Weight (%)	Indices			% Change Sep 2024 Over		Impact (In % points) Sep 2024 Over	
			Sep 24	Aug 24	Sep 23	Aug 24	Sep 23	Aug 24	Sep 23
	<b>General</b>	<b>100.00</b>	<b>257.92</b>	<b>259.30</b>	<b>235.99</b>	<b>-0.53</b>	<b>9.29</b>	<b>-0.53</b>	<b>9.29</b>
1.	Food & Non-alcoholic Bev.	30.42	276.17	280.27	273.95	-1.46	0.81	-0.48	0.29
	<i>Non-perishable Food Items</i>	25.97	275.39	275.13	280.97	0.09	-1.99	0.03	-0.61
	<i>Perishable Food Items</i>	4.46	280.76	310.24	233.02	-9.50	20.49	-0.51	0.90
2.	Alcoholic Bev. & Tobacco	0.85	407.83	407.24	382.08	0.14	6.74	0.00	0.09
3.	Clothing & Footwear	8.01	237.02	236.21	205.70	0.34	15.23	0.02	1.06
4.	Housing, Water, Electricity, Gas & Fuels	27.03	241.96	243.39	189.18	-0.59	27.90	-0.15	6.05
5.	Furnishing & Household Equip. & Maintenance	4.09	258.43	259.86	246.47	-0.55	4.85	-0.02	0.21
6.	Health	2.31	257.52	253.98	223.51	1.39	15.22	0.03	0.33
7.	Transport	6.14	299.64	305.69	319.47	-1.98	-6.21	-0.14	-0.52
8.	Communication	2.35	138.34	138.30	124.41	0.03	11.20	0.00	0.14
9.	Recreation & Culture	1.73	259.42	259.63	245.62	-0.08	5.62	0.00	0.10
10.	Education	4.88	195.66	195.37	178.55	0.15	9.58	0.01	0.35
11.	Restaurants & Hotels	7.41	271.99	266.75	252.06	1.96	7.91	0.15	0.63
12.	Miscellaneous	4.77	286.58	283.85	259.03	0.96	10.64	0.05	0.56

Main contributors to month-on-month and year-on-year percentage changes are given below and detail is given in **Annexure-A**.

### 1. MONTH-ON-MONTH Top few commodities which varied from previous month are given below:

#### **FOOD**

**Increased:** Besan (14.67%), Pulse Gram (13.48%), Eggs (7.33%), Gram Whole (4.98%), Onions (4.94%), Condiments and Spices (3.32%), Readymade Food (2.54%), Meat (2.37%), Sweetmeat (2.21%), Potatoes (0.98%), Fish (0.82%), Gur (0.72%), Rice (0.70%), Dry Fruits (0.66%), Vegetable Ghee (0.36%), Milk Products (0.33%), Milk Fresh (0.27%), Beverages (0.23%) and Milk Powder (0.07%).

**Decreased:** Tomatoes (24.34%), Fresh Vegetables (18.13%), Fresh Fruits (5.49%), Wheat Flour (4.53%), Wheat (4.46%), Pulse Masoor (3.99%), Pulse Mash (2.67%), Sugar (2.21%), Cooking Oil (2.08%), Pulse Moong (1.77%), Chicken (1.13%), Wheat Products (0.39%), Beans (0.15%), Mustard Oil (0.12%), Bakery & Confectionary (0.11%) and Dessert Preparation (0.03%).

#### **NON-FOOD:**

**Increased:** Electrical Appliances for Personal (3.02%), Dental Services (3.01%), Postal Services (2.48%), Newspapers (2.39%), Doctor (MBBS) Clinic Fee (2.35%), Cleaning & Laundering (1.88%) and Water Supply (1.27%).

**Decreased:** Motor Fuel (3.34%), Electricity Charges (3.09%), Transport Services (0.64%), Liquefied Hydrocarbons (0.52%), Household Equipments (0.44%), Stationery (0.43%) and Recreation & Culture (0.32%).

### YEAR-ON-YEAR: Top few commodities which varied from corresponding month of previous year i.e. September, 2023 are given below:

#### **FOOD**

**Increased:** Onions (78.00%), Pulse Gram (56.98%), Besan (47.53%), Fish (29.85%), Fresh Vegetables (29.17%), Milk Powder (21.09%), Chicken (21.08%), Dry Fruits (20.98%), Meat (20.92%), Gram Whole (17.69%), Pulse Moong (16.42%), Fresh Fruits (15.19%), Beans (14.97%), Honey (9.15%), Beverages (8.99%), Butter (8.41%), Milk Fresh (8.19%), Milk Products (8.18%) and Potatoes (7.95%).

**Decreased:** Wheat (38.87%), Wheat Flour (37.23%), Sugar (14.56%), Cooking Oil (11.85%), Gur (10.59%), Wheat Products (9.55%), Pulse Masoor (7.39%), Mustard Oil (6.96%), Rice (6.72%), Vegetable Ghee (6.11%), Tea (2.01%), Bakery & Confectionary (1.06%) and Dessert Preparation (0.19%).

#### **NON-FOOD:**

**Increased:** Gas Charges (318.74%), Motor Vehicle Tax (168.79%), Dental Services (29.47%), Cotton Cloth (19.63%), Doctor (MBBS) Clinic Fee (18.76%), Footwear (17.46%), Hospitals Services (17.12%) and Transport Services (17.06%).

**Decreased:** Motor Fuel (17.07%) and Liquefied Hydrocarbons (0.32%).

### III. Rural Consumer Price Index (RCPI)

The Rural Consumer Price Index for **September 2024** is decreased by **0.50%** over **August 2024** and increased to **3.65%** over corresponding month of the last year i.e. **September 2023**.

**Table 3: Consumer Price Index (Rural) by Group of Commodities and Services (Base 2015-16)**

No	Group	Group Weight (%)	Indices			% Change Sep 2024 Over		Impact (In % points) Sep 2024 Over	
			Sep 24	Aug 24	Sep 23	Aug 24	Sep 23	Aug 24	Sep 23
	<b>General</b>	<b>100.00</b>	<b>265.55</b>	<b>266.89</b>	<b>256.21</b>	<b>-0.50</b>	<b>3.65</b>	<b>-0.50</b>	<b>3.65</b>
1.	Food & Non-alcoholic Bev.	40.87	277.61	281.23	283.57	-1.29	-2.10	-0.55	-0.95
	<i>Non-perishable Food Items</i>	<i>35.08</i>	<i>275.82</i>	<i>276.57</i>	<i>290.78</i>	<i>-0.27</i>	<i>-5.14</i>	<i>-0.10</i>	<i>-2.05</i>
	<i>Perishable Food Items</i>	<i>5.79</i>	<i>288.46</i>	<i>309.48</i>	<i>239.89</i>	<i>-6.79</i>	<i>20.25</i>	<i>-0.46</i>	<i>1.10</i>
2.	Alcoholic Bev. & Tobacco	1.28	362.46	360.75	340.06	0.47	6.59	0.01	0.11
3.	Clothing & Footwear	9.48	257.69	255.85	222.41	0.72	15.86	0.07	1.31
4.	Housing, Water, Electricity, Gas & Fuels	18.49	221.31	222.68	207.41	-0.62	6.70	-0.10	1.00
5.	Furnishing & Household Equip. & Maintenance	4.10	285.87	285.81	262.00	0.02	9.11	0.00	0.38
6.	Health	3.51	247.99	247.30	221.11	0.28	12.16	0.01	0.37
7.	Transport	5.56	312.01	317.76	342.50	-1.81	-8.90	-0.12	-0.66
8.	Communication	1.99	128.57	128.21	111.21	0.28	15.61	0.00	0.14
9.	Recreation & Culture	1.38	301.16	299.91	272.22	0.42	10.63	0.01	0.16
10.	Education	2.13	222.96	220.36	181.67	1.18	22.73	0.02	0.34
11.	Restaurants & Hotels	6.19	282.10	278.98	253.31	1.12	11.37	0.07	0.70
12.	Miscellaneous	5.02	307.12	302.62	268.51	1.49	14.38	0.08	0.76

Main contributors to Month-on-Month and Year-on-Year percentage changes are given below and detail is given in **Annexure-B**.

#### 1. MONTH-ON-MONTH Top few commodities which varied from previous month are given below:

##### FOOD

**Increased:** Besan (14.40%), Onions (12.75%), Pulse Gram (10.12%), Eggs (8.54%), Gram Whole (4.54%), Meat (3.74%), Gur (1.95%), Readymade Food (1.69%), Mustard Oil (1.49%), Nimco (1.37%), Milk Fresh (1.10%), Dry Fruits (1.02%), Milk Products (0.84%), Butter (0.73%), Milk Powder (0.30%), Rice (0.21%), Vegetable Ghee (0.11%), Honey (0.07%) and Beverages (0.06%).

**Decreased:** Tomatoes (18.61%), Fresh Vegetables (16.13%), Fresh Fruits (6.14%), Wheat (5.46%), Wheat Flour (5.14%), Wheat Products (2.50%), Fish (1.99%), Pulse Moong (1.92%), Sugar (1.68%), Chicken (1.53%), Pulse Masoor (1.17%), Cooking Oil (0.95%), Potatoes (0.56%), Bakery and Confectionary (0.38%), Pulse Mash (0.29%), Condiments & Spices (0.16%) and Beans (0.02%).

##### NON-FOOD

**Increased:** Water Supply (5.19%), Personal Effects (2.68%), Dental Services (2.38%), Construction Input Items (1.88%), Communication Apparatus (1.34%), Cotton Cloth (1.29%) and Education (1.18%).

**Decreased:** Motor Fuels (3.50%), Electricity Charges (3.09%), Liquefied Hydrocarbons (1.89%) and Transport Services (0.23%).

#### YEAR-ON-YEAR: Top few commodities which varied from corresponding month of previous year i.e. September, 2023 are given below:

##### FOOD

**Increased:** Onions (89.74%), Pulse Gram (48.05%), Besan (39.23%), Milk Powder (26.07%), Beans (24.29%), Meat (23.27%), Pulse Moong (21.05%), Butter (20.75%), Fish (19.94%), Chicken (18.04%), Fresh Vegetables (17.11%), Fresh Fruits (16.56%), Dry Fruits (15.09%), Gram Whole (11.12%), Milk Products (11.01%), Milk Fresh (10.66%) and Potatoes (10.44%).

**Decreased:** Wheat Flour (38.31%), Wheat (36.76%), Sugar (15.64%), Wheat Products (9.69%), Cooking Oil (8.36%), Vegetable Ghee (6.19%), Gur (5.39%), Rice (4.86%), Mustard Oil (3.99%) and Tea (0.09%).

##### NON-FOOD

**Increased:** Motor Vehicle Tax (126.61%), Education (22.73%), Personal Effects (22.05%), Cotton Cloth (19.19%), Communication Services (18.70%), Footwear (17.14%), Furniture and Furnishing (16.77%), Marriage Hall Charges (16.15%), Household Textiles (14.59%), Stationery (14.13%) and Construction Input Items (13.98%).

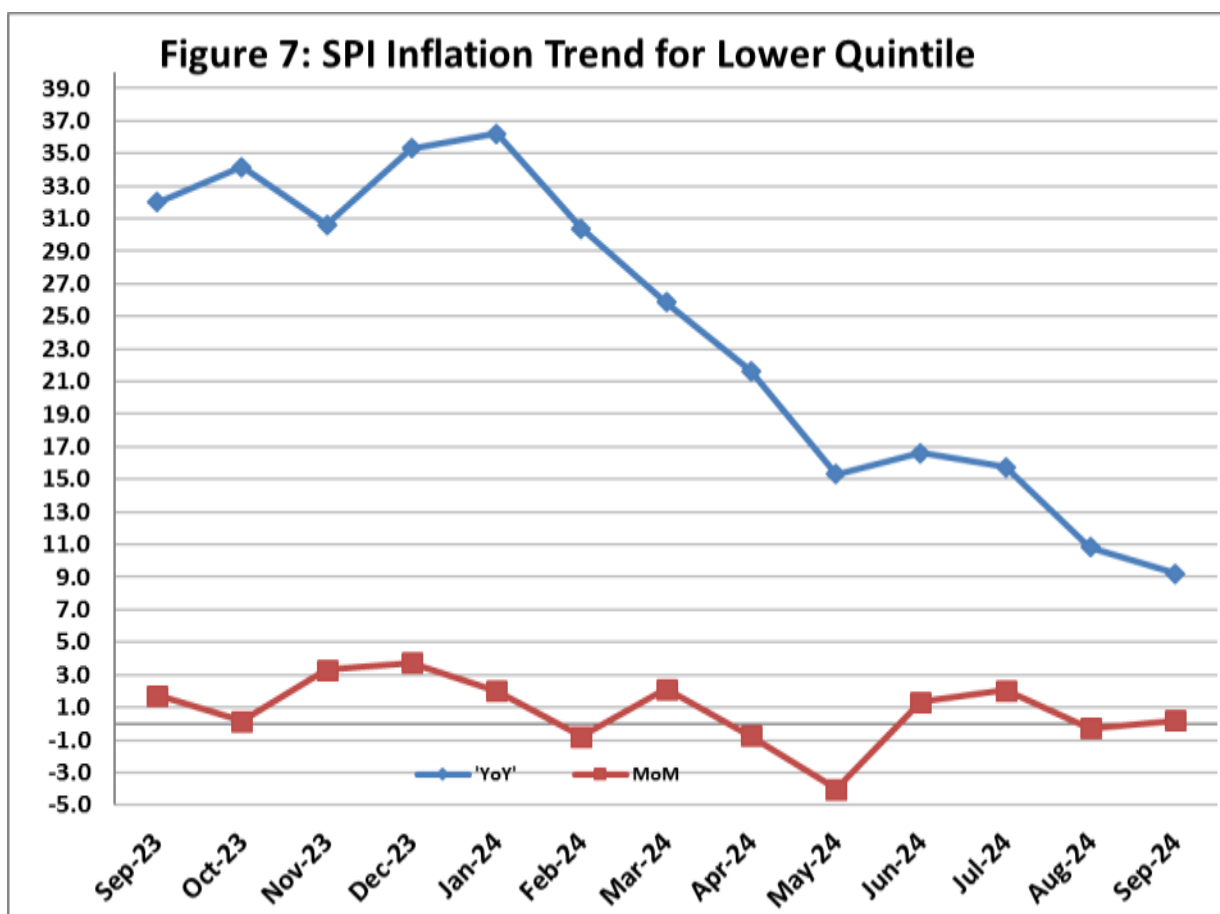
**Decreased:** Motor Fuels (18.37%) and Liquefied Hydrocarbons (1.42%).

## IV. Sensitive Price Indicator

Quintile-wise percentage changes YoY and MoM are given below in Table 4. The series from September 2023 to September 2024 is also graphed below in Figure 7.

Table 4: Sensitive Price Indicator (Base 2015-16)					
Quintiles	Indices			% Change Sep 2024 Over	
	Sep 2024	Aug 2024	Sep 2023	Aug 2024	Sep 2023
1	311.08	310.40	284.84	0.22	9.21
2	308.84	308.22	272.49	0.20	13.34
3	328.95	331.78	282.19	-0.85	16.57
4	317.04	320.90	278.79	-1.20	13.72
5	319.77	323.58	285.28	-1.18	12.09
<b>Combined</b>	<b>318.45</b>	<b>321.44</b>	<b>280.56</b>	<b>-0.93</b>	<b>13.51</b>

Table 4.1: Weekly Percentage Change of SPI During September 2024				
Quintiles	% Change over Previous week			
	05-09-2024	12-09-2024	19-09-2024	26-09-2024
Quintile 1	-0.14	0.58	-0.42	0.08
<b>Combined</b>	<b>-0.15</b>	<b>0.01</b>	<b>-0.52</b>	<b>0.05</b>



## V. Wholesale Price Index

The Wholesale Price Index for **September, 2024** decreased by **1.05%** over **August, 2024**. It increased to **1.95%** over the corresponding month of the last year i.e. **September, 2023**. YoY and MoM movements, from September, 2023 to September, 2024 are also graphed below in Figure 8.

**Table 5: Wholesale Price Index by Group of Commodities (Base 2015-16)**

No	Group	Group Weight (%)	Indices			% Change Sep 2024 Over		Impact (In % points) Sep 2024 Over	
			Sep 24	Aug 24	Sep 23	Aug 24	Sep 23	Aug 24	Sep 23
	<b>General</b>	<b>100.00</b>	<b>313.50</b>	<b>316.84</b>	<b>307.51</b>	<b>-1.05</b>	<b>1.95</b>	<b>-1.05</b>	<b>1.95</b>
1	Agriculture Forestry & Fishery	25.77	288.28	289.40	281.19	-0.39	2.52	-0.09	0.59
2	Ores/Minerals, Elec., Gas & Water	12.01	367.37	375.03	268.11	-2.04	37.02	-0.29	3.88
3	Food, Beverages, Tobacco, Textiles & Leather Products	31.11	271.44	271.54	262.56	-0.04	3.38	-0.01	0.90
	i. Food Products, Beverages & Tobacco	20.07	284.80	285.48	280.14	-0.24	1.66	-0.04	0.30
	ii. Textiles & Apparels	10.33	251.17	250.12	233.77	0.42	7.44	0.03	0.58
	iii. Leather Products	0.71	188.92	188.92	184.66	0.00	2.31	0.00	0.01
4	Other Transportable Goods	22.40	342.57	351.85	395.00	-2.64	-13.27	-0.66	-3.82
5	Metal Product, Machinery & Equipment	8.72	389.29	389.55	375.20	-0.07	3.76	-0.01	0.40

Main contributors to month-on-month and year-on-year percentage changes are given below and detail is given in **Annexure-C**.

### 1. **MONTH-ON-MONTH:** Top few commodities which varied from previous month are given below:

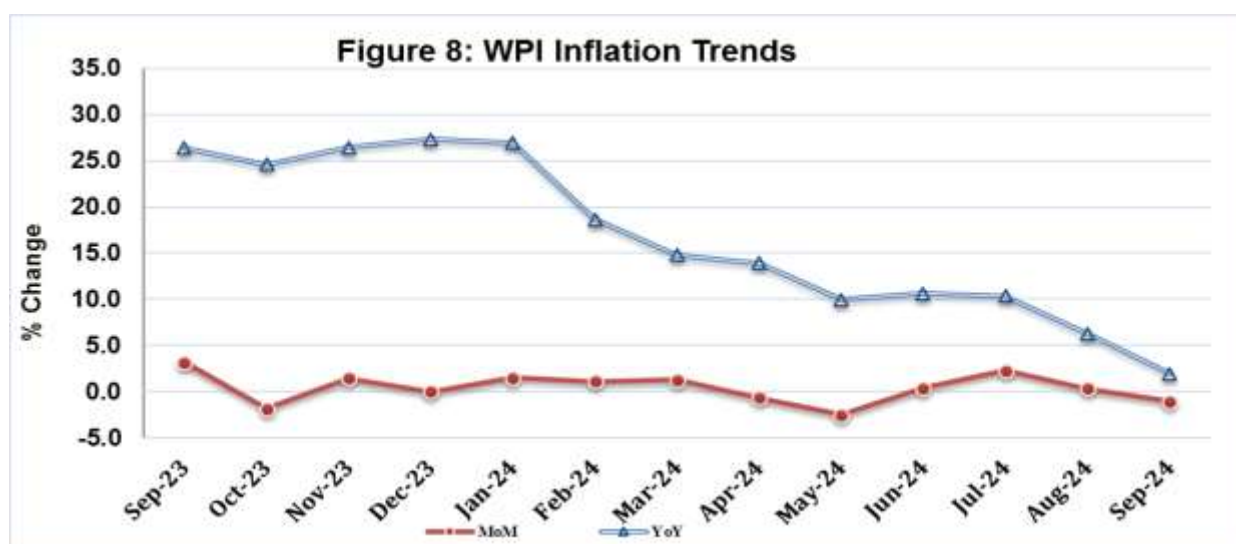
**Increased:** Other Cereal Flour (18.30%), Raw Animal Materials / Wool (12.63%), Unmanufactured Tobacco (5.51%), Fibre Crops (5.51%), Ceramics & Sanitary Fixture (5.34%), Eggs (5.27%), Pulses (2.70%), Maize (2.40%), Electric Wires (2.35%), Meat of Animals (2.28%), Auto Tyres (2.10%), Soaps & Detergents (2.09%), Timber (1.90%), Sugar Crops (1.72%), Milk & Cream in Solid Form (1.47%), Readymade Garments (1.23%), Cotton Seeds (1.11%), Other Oil Seeds (1.03%) and Dry Fruits (0.93%).

**Decreased:** Vegetables (19.55%), Spices (7.61%), Sorghum / Jowar (7.28%), Fresh Fruits (6.22%), Kerosene Oil (5.79%), Diesel Oil (5.78%), Wheat (5.41%), Wheat Flour (5.39%), Millet / Bajra (5.10%), Electrical Energy (4.52%), Furnace Oil (4.06%), Motor Spirit (4.05%) and Poultry(3.54%).

### **YEAR-ON-YEAR:** Top few commodities which varied from previous year are given below:

**Increased:** Natural Gas Liquefied (71.80%), Other Cereal Flour (52.71%), Raw Animal Materials / Wool (50.20%), Unmanufactured Tobacco (43.15%), Concrete Mixture (40.26%), Processed Liquid Milk (28.89%), Engines & Motors (28.57%), Cement (27.26%), Hard Board (25.00%), Dairy Products (24.84%), Electric Wires (24.18%), Dyeing Material (23.72%), Other Fabrics (22.49%), Cotton Fabrics (21.75%), Fertilizers (20.05%) and Poultry(18.73%).

**Decreased:** Wheat (41.56%), Wheat Flour (37.02%), Stimulant & Spice Crops (33.84%), Kerosene Oil (31.41%), Furnace Oil (26.80%), Diesel Oil (25.54%), Motor Spirit (20.67%), Spices (17.91%), Chemicals (13.28%), Steel Bar & Sheets (12.68%) and Sugar Refined (12.26%).



**Annexure A:CPI (Urban) Index Numbers by Commodity Groups & Commodities (2015-16=100)**

Item and Specification	Weight	Index Numbers			% Change in Sep 2024 over	
		Sep 24	Aug 24	Sep 23	Aug 2024	Sep 2023
<b>General</b>	<b>100.0000</b>	<b>257.92</b>	<b>259.30</b>	<b>235.99</b>	- <b>0.53</b>	+ <b>9.29</b>
<b>Food and non-alcoholic Beverage</b>	<b>30.4215</b>	<b>276.17</b>	<b>280.27</b>	<b>273.95</b>	- <b>1.46</b>	+ <b>0.81</b>
01 Wheat	0.6120	221.66	232.01	362.58	- 4.46	- 38.87
02 Wheat flour	3.0075	229.63	240.52	365.84	- 4.53	- 37.23
03 Wheat products	0.0936	293.10	294.24	324.05	- 0.39	- 9.55
04 Besan	0.0830	313.38	273.29	212.42	+ 14.67	+ 47.53
05 Rice	1.1804	315.60	313.42	338.34	+ 0.70	- 6.72
06 Bakery and confectionary	0.4770	260.22	260.50	263.00	- 0.11	- 1.06
07 Nimco	0.1224	289.86	288.04	274.82	+ 0.63	+ 5.47
08 Meat	2.0411	320.44	313.03	265.01	+ 2.37	+ 20.92
09 Chicken	1.3631	309.90	313.44	255.94	- 1.13	+ 21.08
10 Fish	0.3855	196.82	195.22	151.57	+ 0.82	+ 29.85
11 Milk fresh	7.1070	259.28	258.57	239.65	+ 0.27	+ 8.19
12 Milk products	0.6407	263.84	262.96	243.89	+ 0.33	+ 8.18
13 Milk powder	0.3106	302.15	301.95	249.53	+ 0.07	+ 21.09
14 Eggs	0.5083	352.44	328.38	339.37	+ 7.33	+ 3.85
15 Butter	0.0932	375.71	375.71	346.57	+ 0.00	+ 8.41
16 Mustard oil	0.0120	284.82	285.15	306.11	- 0.12	- 6.96
17 Cooking oil	1.1016	298.40	304.74	338.52	- 2.08	- 11.85
18 Vegetable ghee	1.0324	310.52	309.40	330.72	+ 0.36	- 6.11
19 Dry fruits	0.3299	284.29	282.43	234.98	+ 0.66	+ 20.98
20 Fresh fruits	1.4363	204.03	215.89	177.13	- 5.49	+ 15.19
21 Pulse masoor	0.1624	212.36	221.18	229.30	- 3.99	- 7.39
22 Pulse moong	0.1697	207.35	211.09	178.11	- 1.77	+ 16.42
23 Pulse mash	0.1152	243.67	250.35	232.87	- 2.67	+ 4.64
24 Pulse gram	0.1660	321.62	283.41	204.88	+ 13.48	+ <u>56.98</u>
25 Gram whole	0.0912	316.86	301.84	269.24	+ 4.98	+ 17.69
26 Beans	0.0408	375.02	375.57	326.20	- 0.15	+ 14.97
27 Potatoes	0.4496	400.25	396.38	370.77	+ 0.98	+ 7.95
28 Onions	0.5928	344.14	327.94	193.34	+ 4.94	+ <u>78.00</u>
29 Tomatoes	0.3459	272.81	360.58	267.31	- 24.34	+ 2.06
30 Fresh vegetables	1.5306	281.48	343.82	217.91	- 18.13	+ 29.17
31 Sugar	1.1130	228.78	233.94	267.76	- 2.21	- 14.56
32 Gur	0.0379	241.93	240.21	270.57	+ 0.72	- 10.59
33 Honey	0.1017	188.88	188.88	173.05	+ 0.00	+ 9.15
34 Sweetmeat	0.3535	306.04	299.43	283.88	+ 2.21	+ 7.81
35 Ice cream	0.1044	199.33	199.33	198.04	+ 0.00	+ 0.65
36 Condiments and Spices	1.3340	334.78	324.02	331.92	+ 3.32	+ 0.86
37 Dessert preparation	0.0419	262.75	262.83	263.25	- 0.03	- 0.19
38 Tea	0.8427	332.73	332.73	339.55	+ 0.00	- 2.01
39 Beverages	0.8906	250.98	250.41	230.27	+ 0.23	+ 8.99
<b>Alcoholic Beverages, Tobacco</b>	<b>0.8540</b>	<b>407.83</b>	<b>407.24</b>	<b>382.08</b>	+ <b>0.14</b>	+ <b>6.74</b>
40 Cigarettes	0.7167	406.04	405.76	384.15	+ 0.07	+ 5.70
41 Pan prepared	0.1373	417.17	414.94	371.28	+ 0.54	+ 12.36
<b>Clothing and footwear</b>	<b>8.0096</b>	<b>237.02</b>	<b>236.21</b>	<b>205.70</b>	+ <b>0.34</b>	+ <b>15.23</b>
42 Cotton cloth	2.2227	279.95	279.69	234.02	+ 0.09	+ 19.63
43 Woolen cloth	0.8361	228.49	225.56	200.05	+ 1.30	+ 14.22
44 Readymade garments	1.3196	206.45	205.00	192.62	+ 0.71	+ 7.18
45 Woolen readymade garments	0.4307	230.68	230.68	187.07	+ 0.00	+ 23.31
46 Tailoring	1.0741	227.84	227.53	206.11	+ 0.14	+ 10.54
47 Hosiery	0.4070	226.83	226.45	199.47	+ 0.17	+ 13.72
48 Dopatta	0.1713	195.46	191.92	171.03	+ 1.84	+ 14.28
49 Cleaning and laundering	0.0665	260.52	255.72	246.86	+ 1.88	+ 5.53
50 Footwear	1.4816	219.70	219.63	187.04	+ 0.03	+ 17.46
<b>Housing, water, Elec., Gas and other Fuels</b>	<b>27.0332</b>	<b>241.96</b>	<b>243.39</b>	<b>189.18</b>	- <b>0.59</b>	+ <b>27.90</b>
51 House rent	19.2558	164.08	164.08	155.70	+ 0.00	+ 5.38
52 Construction input items	0.3765	267.19	266.39	259.92	+ 0.30	+ 2.80
53 Construction wage rates	0.2025	217.12	215.95	208.90	+ 0.54	+ 3.93
54 Water supply	0.5269	204.19	201.62	196.48	+ 1.27	+ 3.92
55 Garbage collection	0.1064	252.22	250.31	237.56	+ 0.76	+ 6.17
56 Electricity charges	4.5562	275.67	284.46	268.81	- 3.09	+ 2.55
57 Gas charges	1.0807	1479.08	1479.08	353.22	+ 0.00	+ <u>318.74</u>
58 Liquefied Hydrocarbons	0.5064	319.38	321.05	320.41	- 0.52	- 0.32

**Annexure A:CPI (Urban) Index Numbers by Commodity Groups & Commodities (2015-16=100)**

Item and Specification	Weight	Index Numbers			% Change in Sep 2024 over	
		Sep 24	Aug 24	Sep 23	Aug 2024	Sep 2023
59 Solid Fuel	0.4218	204.59	204.49	185.35	+ 0.05	+ 10.38
<b>Furnishing and household equipments</b>	<b>4.0937</b>	<b>258.43</b>	<b>259.86</b>	<b>246.47</b>	- <b>0.55</b>	+ <b>4.85</b>
60 Furniture and furnishing	0.4750	248.64	247.94	219.12	+ 0.28	+ 13.47
61 Carpets	0.0308	149.43	149.43	145.88	+ 0.00	+ 2.43
62 Household textiles	0.3420	186.36	185.82	169.55	+ 0.29	+ 9.91
63 Household equipments	1.0032	255.31	256.45	245.76	- 0.44	+ 3.89
64 Plastic products	0.0536	214.40	212.01	197.77	+ 1.13	+ 8.41
65 Major tools & equipments	0.0084	232.96	232.35	213.59	+ 0.26	+ 9.07
66 Washing soap/detergents/match	1.4112	321.98	326.03	312.96	- 1.24	+ 2.88
67 Household servant	0.7695	191.76	191.26	184.31	+ 0.26	+ 4.04
<b>Health</b>	<b>2.3098</b>	<b>257.52</b>	<b>253.98</b>	<b>223.51</b>	+ <b>1.39</b>	+ <b>15.22</b>
68 Drugs and medicines	1.0735	273.52	269.05	239.62	+ 1.66	+ 14.15
69 Therapeutic Appliances and Equipments	0.0054	150.84	150.70	141.16	+ 0.09	+ 6.86
70 Doctor (MBBS) clinic fee	0.4044	326.91	319.39	275.26	+ 2.35	+ 18.76
71 Dental services	0.0156	212.92	206.69	164.45	+ 3.01	+ 29.47
72 Medical tests	0.2367	195.41	195.40	182.09	+ 0.01	+ 7.32
73 Hospitals services	0.5742	206.58	206.15	176.38	+ 0.21	+ 17.12
<b>Transport</b>	<b>6.1368</b>	<b>299.64</b>	<b>305.69</b>	<b>319.47</b>	- <b>1.98</b>	- <b>6.21</b>
74 Motor vehicles	0.8097	259.34	259.33	256.47	+ 0.00	+ 1.12
75 Motor vehicle accessories	0.1941	259.99	259.13	251.22	+ 0.33	+ 3.49
76 Motor fuel	2.9088	347.75	359.75	419.34	- 3.34	- 17.07
77 Mechanical services	0.4290	225.49	224.23	214.46	+ 0.56	+ 5.14
78 Motor vehicle tax	0.0482	399.23	399.23	148.53	+ 0.00	+ 168.79
79 Transport services	1.7470	258.09	259.76	220.48	- 0.64	+ 17.06
<b>Communication</b>	<b>2.3536</b>	<b>138.34</b>	<b>138.30</b>	<b>124.41</b>	+ <b>0.03</b>	+ <b>11.20</b>
80 Postal services	0.0190	214.41	209.23	202.44	+ 2.48	+ 5.91
81 Communication apparatus	0.4524	188.35	188.35	187.20	+ 0.00	+ 0.61
82 Communication Services	1.8822	125.55	125.55	108.53	+ 0.00	+ 15.68
<b>Recreation and culture</b>	<b>1.7301</b>	<b>259.42</b>	<b>259.63</b>	<b>245.62</b>	- <b>0.08</b>	+ <b>5.62</b>
83 Recreation and culture	0.6478	152.80	153.29	147.81	- 0.32	+ 3.38
84 Text books	0.6655	332.57	332.44	314.48	+ 0.04	+ 5.75
85 Newspapers	0.0716	216.94	211.87	209.69	+ 2.39	+ 3.46
86 stationery	0.3452	327.30	328.70	303.88	- 0.43	+ 7.71
<b>Education</b>	<b>4.8807</b>	<b>195.66</b>	<b>195.37</b>	<b>178.55</b>	+ <b>0.15</b>	+ <b>9.58</b>
87 Education	4.8807	195.66	195.37	178.55	+ 0.15	+ 9.58
<b>Restaurants and hotels</b>	<b>7.4050</b>	<b>271.99</b>	<b>266.75</b>	<b>252.06</b>	+ <b>1.96</b>	+ <b>7.91</b>
88 Readymade food	5.5235	278.58	271.68	263.20	+ 2.54	+ 5.84
89 Marriage Hall Charges	1.7514	258.89	258.50	223.98	+ 0.15	+ 15.59
90 Accommodation Services	0.1301	168.39	168.39	157.40	+ 0.00	+ 6.98
<b>Misc. goods and services</b>	<b>4.7720</b>	<b>286.58</b>	<b>283.85</b>	<b>259.03</b>	+ <b>0.96</b>	+ <b>10.64</b>
91 Personal Grooming Services	0.8001	250.88	250.28	222.32	+ 0.24	+ 12.85
92 Electrical Appliances for Per	0.0465	167.19	162.29	156.98	+ 3.02	+ 6.50
93 Appliances/Articles/Products	2.9807	264.66	263.65	246.48	+ 0.38	+ 7.38
94 Personal Effects n.e.c.	0.9447	391.85	382.01	334.76	+ 2.58	+ 17.05

**Annexure B:CPI (Rural) Index Numbers by Commodity Groups & Commodities (2015-16=100)**

Item and Specification	Weight	Index Numbers			% Change in Sep 2024 over		
		Sep 24	Aug 24	Sep 23	Aug 2024	Sep 2023	
<b>General</b>	<b>100.0000</b>	<b>265.55</b>	<b>266.89</b>	<b>256.21</b>	-	<b>0.50</b>	+ <b>3.65</b>
<b>Food and non-alcoholic Beverage</b>	<b>40.8668</b>	<b>277.61</b>	<b>281.23</b>	<b>283.57</b>	-	<b>1.29</b>	- <b>2.10</b>
01 Wheat	3.4736	227.61	240.76	359.93	-	5.46	- 36.76
02 Wheat Flour	3.4297	228.06	240.42	369.68	-	5.14	- 38.31
03 Wheat Products	0.1068	290.35	297.80	321.50	-	2.50	- 9.69
04 Besan	0.0728	312.22	272.92	224.24	+	14.40	+ 39.23
05 Rice	1.5501	419.38	418.49	440.82	+	0.21	- 4.86
06 Bakery and Confectionary	0.3702	303.55	304.70	293.83	-	0.38	+ 3.31
07 Nimco	0.0774	301.85	297.78	276.10	+	1.37	+ 9.33
08 Meat	1.7146	332.09	320.11	269.39	+	3.74	+ 23.27
09 Chicken	1.4641	323.70	328.73	274.24	-	1.53	+ 18.04
10 Fish	0.2640	209.37	213.63	174.56	-	1.99	+ 19.94
11 Milk fresh	10.3803	253.88	251.11	229.42	+	1.10	+ 10.66
12 Milk products	0.9624	254.57	252.44	229.33	+	0.84	+ 11.01
13 Milk powder	0.1062	275.08	274.26	218.20	+	0.30	+ 26.07
14 Eggs	0.5665	338.54	311.89	329.57	+	8.54	+ 2.72
15 Butter	0.3333	285.62	283.54	236.53	+	0.73	+ 20.75
16 Mustard oil	0.0136	305.22	300.73	317.90	+	1.49	- 3.99
17 Cooking oil	0.6011	324.62	327.73	354.22	-	0.95	- 8.36
18 Vegetable ghee	2.3764	334.87	334.50	356.98	+	0.11	- 6.19
19 Dry fruits	0.2496	325.27	322.00	282.62	+	1.02	+ 15.09
20 Fresh fruits	1.4505	212.82	226.73	182.58	-	6.14	+ 16.56
21 Pulse Masoor	0.2076	238.06	240.88	232.27	-	1.17	+ 2.49
22 Pulse Moong	0.2510	228.60	233.07	188.85	-	1.92	+ 21.05
23 Pulse Mash	0.1465	254.18	254.92	234.70	-	0.29	+ 8.30
24 Pulse Gram	0.2751	314.48	285.58	212.41	+	10.12	+ 48.05
25 Gram Whole	0.1116	314.69	301.02	283.19	+	4.54	+ 11.12
26 Beans	0.0896	405.32	405.39	326.10	-	0.02	+ 24.29
27 Potatoes	0.7437	442.91	445.40	401.04	-	0.56	+ 10.44
28 Onions	0.8965	346.50	307.32	182.62	+	12.75	+ <u>89.74</u>
29 Tomatoes	0.5069	247.16	303.66	240.55	-	18.61	+ 2.75
30 Fresh Vegetables	2.0947	263.60	314.29	225.08	-	16.13	+ 17.11
31 Sugar	2.0296	230.18	234.12	272.84	-	1.68	- 15.64
32 Gur	0.1522	252.36	247.54	266.73	+	1.95	- 5.39
33 Honey	0.0296	192.44	192.31	175.02	+	0.07	+ 9.95
34 Sweetmeat	0.3967	281.10	281.10	258.50	+	0.00	+ 8.74
35 Ice Cream	0.0568	199.34	199.34	194.84	+	0.00	+ 2.31
36 Condiments and Spices	1.4919	296.32	296.80	293.52	-	0.16	+ 0.95
37 Dessert Preparation	0.0133	268.52	268.52	260.66	+	0.00	+ 3.02
38 Tea	1.2566	333.85	333.85	334.14	+	0.00	- 0.09
39 Beverages	0.5537	241.72	241.58	227.58	+	0.06	+ 6.21
<b>Alcoholic Beverages, Tobacco</b>	<b>1.2786</b>	<b>362.46</b>	<b>360.75</b>	<b>340.06</b>	+	<b>0.47</b>	+ <b>6.59</b>
40 Cigarettes	1.2364	363.01	361.45	341.04	+	0.43	+ 6.44
41 Pan Prepared	0.0422	346.31	340.15	311.19	+	1.81	+ 11.29
<b>Clothing and footwear</b>	<b>9.4826</b>	<b>257.69</b>	<b>255.85</b>	<b>222.41</b>	+	<b>0.72</b>	+ <b>15.86</b>
42 Cotton Cloth	2.8381	291.15	287.45	244.27	+	1.29	+ 19.19
43 Woolen Cloth	1.0959	249.61	248.91	217.28	+	0.28	+ 14.88
44 Readymade Garments	1.1345	226.43	226.20	215.76	+	0.10	+ 4.95
45 Woolen Readymade Garments	0.5401	268.35	268.35	193.86	+	0.00	+ 38.42
46 Tailoring	1.2999	239.56	237.78	217.45	+	0.75	+ 10.17
47 Hosiery	0.4322	338.52	336.82	301.50	+	0.50	+ 12.28
48 Dopatta	0.2078	239.09	238.78	210.69	+	0.13	+ 13.48
49 Cleaning and Laundering	0.0176	251.35	251.35	245.08	+	0.00	+ 2.56
50 Footwear	1.9165	224.39	222.95	191.56	+	0.65	+ 17.14
<b>Housing, water, Elec., Gas an</b>	<b>18.4853</b>	<b>221.31</b>	<b>222.68</b>	<b>207.41</b>	-	<b>0.62</b>	+ <b>6.70</b>
51 House Rent	8.6110	170.84	170.84	159.54	+	0.00	+ 7.08
52 Construction Input Items	0.6306	252.66	247.99	221.67	+	1.88	+ 13.98
53 Construction Wage Rates	0.2526	236.16	233.88	217.79	+	0.97	+ 8.43
54 Water Supply	0.0645	307.79	292.59	277.95	+	5.19	+ 10.74
55 Garbage Collection	0.0080	190.06	190.06	189.52	+	0.00	+ 0.28
56 Electricity Charges	3.4431	275.67	284.46	268.81	-	3.09	+ 2.55
57 Liquefied Hydrocarbons	0.9994	297.49	303.22	301.78	-	1.89	- 1.42
58 Solid Fuel	4.4761	253.13	251.78	227.62	+	0.54	+ 11.21

**Annexure B:CPI (Rural) Index Numbers by Commodity Groups & Commodities (2015-16=100)**

Item and Specification	Weight	Index Numbers			% Change in Sep 2024 over			
		Sep 24	Aug 24	Sep 23	Aug 2024	Sep 2023		
<b><i>Furnishing and household equipments</i></b>	<b>4.1031</b>	<b>285.87</b>	<b>285.81</b>	<b>262.00</b>	<b>+</b>	<b>0.02</b>	<b>+</b>	<b>9.11</b>
59 Furniture and Furnishing	0.5786	273.78	272.15	234.47	+	0.60	+	16.77
60 Household Textiles	0.4382	223.81	223.52	195.32	+	0.13	+	14.59
61 Household Equipments	1.2774	282.64	281.99	261.31	+	0.23	+	8.16
62 Plastic Products	0.0776	279.48	277.30	247.75	+	0.79	+	12.81
63 Major Tools and Equipments	0.0324	229.71	229.59	210.56	+	0.05	+	9.09
64 Washing Soaps, Detergents and	1.6989	309.78	310.85	290.73	-	0.34	+	6.55
<b><i>Health</i></b>	<b>3.5141</b>	<b>247.99</b>	<b>247.30</b>	<b>221.11</b>	<b>+</b>	<b>0.28</b>	<b>+</b>	<b>12.16</b>
65 Drugs and Medicines	1.5792	287.92	286.60	252.62	+	0.46	+	13.97
66 Doctor Clinic Fee	0.5128	288.00	287.78	261.41	+	0.08	+	10.17
67 Dental Services	0.0181	202.29	197.58	183.94	+	2.38	+	9.98
68 Medical Tests	0.3967	219.36	219.02	202.94	+	0.16	+	8.09
69 Hospitals Services	1.0073	177.11	177.11	159.01	+	0.00	+	11.38
<b><i>Transport</i></b>	<b>5.5580</b>	<b>312.01</b>	<b>317.76</b>	<b>342.50</b>	<b>-</b>	<b>1.81</b>	<b>-</b>	<b>8.90</b>
70 Motor Vehicles	0.7305	193.12	193.07	192.71	+	0.03	+	0.21
71 Motor Vehicles Accessories	0.1572	268.22	265.38	255.18	+	1.07	+	5.11
72 Motor Fuels	2.4932	348.67	361.32	427.11	-	3.50	-	18.37
73 Mechanical Services	0.3645	229.57	228.35	221.45	+	0.53	+	3.67
74 Motor Vehicle Tax	0.0174	342.03	342.03	150.93	+	0.00	+	126.61
75 Transport Services	1.7952	329.76	330.52	320.01	-	0.23	+	3.05
<b><i>Communication</i></b>	<b>1.9940</b>	<b>128.57</b>	<b>128.21</b>	<b>111.21</b>	<b>+</b>	<b>0.28</b>	<b>+</b>	<b>15.61</b>
76 Postal Services	0.0070	179.32	179.32	179.32	+	0.00	+	0.00
77 Communication Apparatus	0.3362	160.95	158.82	152.14	+	1.34	+	5.79
78 Communication Services	1.6508	121.76	121.76	102.58	+	0.00	+	18.70
<b><i>Recreation and culture</i></b>	<b>1.3764</b>	<b>301.16</b>	<b>299.91</b>	<b>272.22</b>	<b>+</b>	<b>0.42</b>	<b>+</b>	<b>10.63</b>
79 Recreation and Culture	0.4763	231.03	229.89	212.52	+	0.50	+	8.71
80 Text Books	0.5047	360.47	360.44	327.72	+	0.01	+	9.99
81 Newspapers	0.0230	242.52	242.52	242.52	+	0.00	+	0.00
82 Stationery	0.3724	314.08	310.99	275.19	+	0.99	+	14.13
<b><i>Education</i></b>	<b>2.1342</b>	<b>222.96</b>	<b>220.36</b>	<b>181.67</b>	<b>+</b>	<b>1.18</b>	<b>+</b>	<b>22.73</b>
83 Education	2.1342	222.96	220.36	181.67	+	1.18	+	22.73
<b><i>Restaurants and hotels</i></b>	<b>6.1895</b>	<b>282.10</b>	<b>278.98</b>	<b>253.31</b>	<b>+</b>	<b>1.12</b>	<b>+</b>	<b>11.37</b>
84 Readymade Food	3.8001	306.27	301.19	280.17	+	1.69	+	9.32
85 Marriage Hall Charges	2.2525	251.57	251.57	216.59	+	0.00	+	16.15
86 Accommodation Services	0.1369	113.40	113.40	112.13	+	0.00	+	1.13
<b><i>Misc. goods and services</i></b>	<b>5.0174</b>	<b>307.12</b>	<b>302.62</b>	<b>268.51</b>	<b>+</b>	<b>1.49</b>	<b>+</b>	<b>14.38</b>
87 Personal Grooming Services	1.5363	300.88	298.65	274.10	+	0.75	+	9.77
88 Appliances/Articles/Products	2.2746	253.89	251.20	226.61	+	1.07	+	12.04
89 Personal Effects n.e.c.	1.2065	415.43	404.59	340.38	+	2.68	+	22.05



**Annexure C: Wholesale Price Indices by Major Groups & Commodities (2015-16=100)**

Item and Specification	Weight	Index Numbers			% Change in Sep 2024 over		
		Sep 24	Aug 24	Sep 23	Aug 2024	Sep 2023	
<b>General</b>	<b>100.0000</b>	<b>313.50</b>	<b>316.84</b>	<b>307.51</b>	-	<b>1.05</b>	<b>+ 1.95</b>
<b>Agriculture Forestry &amp; Fisher</b>	<b>25.7674</b>	<b>288.28</b>	<b>289.40</b>	<b>281.19</b>	-	<b>0.39</b>	<b>+ 2.52</b>
001 Wheat	0.6297	213.67	225.88	365.64	-	5.41	- 41.56
002 Maize	0.6674	277.09	270.59	250.93	+	2.40	+ 10.43
003 Rice	2.4413	342.81	343.00	368.77	-	0.06	- 7.04
004 Sorghum / Jowar	0.0214	274.31	295.84	303.20	-	7.28	- 9.53
005 Millet / Bajra	0.0374	270.76	285.32	303.78	-	5.10	- 10.87
006 Vegetables	1.2441	392.19	487.47	338.23	-	19.55	+ 15.95
007 Fresh Fruits	1.5144	228.38	243.52	209.87	-	6.22	+ 8.82
008 Dry Fruits	0.2478	355.08	351.82	332.75	+	0.93	+ 6.71
009 Cotton Seeds	1.1511	187.75	185.69	185.50	+	1.11	+ 1.21
010 Other Oil Seeds	0.0722	278.62	275.77	300.64	+	1.03	- 7.32
011 Edible Roots / Potatoes	0.2540	487.80	494.50	490.67	-	1.35	- 0.58
012 Stimulant & Spice Crops	0.1634	487.71	486.19	737.18	+	0.31	- 33.84
013 Pulses	0.4901	305.95	297.91	267.85	+	2.70	+ 14.22
014 Sugar Crops	1.0725	317.48	312.10	291.76	+	1.72	+ 8.82
015 Fibre Crops	5.3169	352.17	333.77	348.23	+	5.51	+ 1.13
016 Unmanufactured Tobacco	0.0742	616.70	584.48	430.81	+	5.51	+ 43.15
017 Poultry	0.5633	298.96	309.94	251.79	-	3.54	+ 18.73
018 Raw Milk from Bovine Animals	7.0279	245.34	245.20	230.35	+	0.06	+ 6.51
019 Eggs	0.5034	351.01	333.44	339.69	+	5.27	+ 3.33
020 Raw Animal Materials / Wool	0.0351	202.50	179.80	134.82	+	12.63	+ <u>50.20</u>
021 Hides, Skins & Fur Skins, Raw	0.4834	54.89	55.29	52.39	-	0.72	+ 4.77
022 Fuel Wood in Logs	0.0179	184.13	184.13	176.86	+	0.00	+ 4.11
023 Fish Live Fresh or Chilled	1.7295	217.84	217.16	192.81	+	0.31	+ 12.98
<b>Ores/Minerals, Elec., Gas &amp; Water</b>	<b>12.0069</b>	<b>367.37</b>	<b>375.03</b>	<b>268.11</b>	-	<b>2.04</b>	<b>+ 37.02</b>
024 Coal not Agglomerated	0.7508	227.51	227.51	194.29	+	0.00	+ 17.10
025 Natural Gas Liquefied	5.7065	417.71	418.61	243.14	-	0.21	+ <u>71.80</u>
026 Salt & Pure Sodium Chloride	0.0584	405.13	405.11	335.62	+	0.00	+ 20.71
027 Electrical Energy	5.4912	333.78	349.59	303.42	-	4.52	+ 10.01
<b>Food, Beverages, Tobacco, Textil</b>	<b>31.1122</b>	<b>271.44</b>	<b>271.54</b>	<b>262.56</b>	-	<b>0.04</b>	<b>+ 3.38</b>
<b>Food Products, Beverages &amp;</b>	<b>20.0718</b>	<b>284.80</b>	<b>285.48</b>	<b>280.14</b>	-	<b>0.24</b>	<b>+ 1.66</b>
028 Meat of Animals	3.4559	309.59	302.68	262.07	+	2.28	+ 18.13
029 Vegetables & Fruit Juice	0.0058	239.89	239.61	234.90	+	0.12	+ 2.12
030 Dried Fruits & Nuts	0.1733	380.57	380.58	336.80	+	0.00	+ 13.00
031 Fruit Juices	0.3880	270.73	270.45	244.42	+	0.10	+ 10.76
032 Vegetable Oils Refined	1.9242	270.48	271.75	293.23	-	0.47	- 7.76
033 Vegetable Ghee	1.5632	320.09	319.36	338.40	+	0.23	- 5.41
034 Oil Cakes	0.9611	260.43	262.99	268.11	-	0.97	- 2.86
035 Processed Liquid Milk	4.4437	318.61	317.58	247.20	+	0.32	+ 28.89
036 Milk & Cream in Solid Form	0.0316	294.97	290.70	257.35	+	1.47	+ 14.62
037 Ice Cream	0.0047	200.56	200.56	198.75	+	0.00	+ 0.91
038 Dairy Products N.E.C	0.0117	324.81	324.08	260.19	+	0.23	+ 24.84
039 Wheat Flour	2.3034	229.79	242.88	364.89	-	5.39	- 37.02
040 Other Cereal Flour	0.0604	347.39	293.66	227.48	+	18.30	+ <u>52.71</u>
041 Sugar Refined	1.7975	232.54	236.83	265.02	-	1.81	- 12.26
042 Chocolate	0.0139	122.88	122.88	103.90	+	0.00	+ 18.27
043 Sugar Confectionary	0.0738	236.84	236.84	233.19	+	0.00	+ 1.57
044 Coffee & Tea	0.7303	273.88	273.88	259.66	+	0.00	+ 5.48
045 Spices	0.1449	302.98	327.95	369.08	-	7.61	- 17.91
046 Other Food Products	0.0336	235.50	235.50	221.45	+	0.00	+ 6.34
047 Mineral Water	0.0207	206.09	206.25	209.13	-	0.08	- 1.45
048 Beverages	0.6303	261.75	262.44	253.18	-	0.26	+ 3.38
049 Tobacco Products	1.2998	280.52	280.52	259.58	+	0.00	+ 8.07
<b>Textiles &amp; Apparels</b>	<b>10.3289</b>	<b>251.17</b>	<b>250.12</b>	<b>233.77</b>	<b>+</b>	<b>0.42</b>	<b>+ 7.44</b>
050 Cotton Yarn	5.2491	239.61	239.61	239.61	+	0.00	+ 0.00
051 Nylon Yarn	0.1719	95.24	95.24	95.24	+	0.00	+ 0.00
052 Blended Yarn	0.1689	148.12	148.12	148.12	+	0.00	+ 0.00
053 Woven Fabrics	0.0128	255.78	255.78	221.40	+	0.00	+ 15.53
054 Cotton Fabrics	0.6343	336.14	336.14	276.10	+	0.00	+ 21.75
055 Other Fabrics	1.1016	259.11	256.89	211.53	+	0.86	+ 22.49
056 Silk & Reyon Fabrics	0.7350	394.45	388.19	326.69	+	1.61	+ 20.74
057 Towels	0.1235	202.83	199.92	193.20	+	1.46	+ 4.98
058 Blankets	0.0029	147.94	147.94	140.09	+	0.00	+ 5.60

**Annexure C: Wholesale Price Indices by Major Groups & Commodities (2015-16=100)**

Item and Specification	Weight	Index Numbers			% Change in Sep 2024 over	
		Sep 24	Aug 24	Sep 23	Aug 2024	Sep 2023
059 Bed Sheets	0.0913	187.46	187.69	164.56	- 0.12	+ 13.92
060 Quilts	0.0019	234.52	234.52	204.18	+ 0.00	+ 14.86
061 Woolen Carpets	0.0383	177.15	177.15	166.01	+ 0.00	+ 6.71
062 Synthetic Carpets	0.0566	156.01	155.86	132.95	+ 0.10	+ 17.34
063 Hosiery Products	0.8832	198.65	198.48	188.38	+ 0.09	+ 5.45
064 Readymade Garments	1.0576	254.52	251.43	231.07	+ 1.23	+ 10.15
<b>Leather Products</b>	<b>0.7115</b>	<b>188.92</b>	<b>188.92</b>	<b>184.66</b>	<b>+ 0.00</b>	<b>+ 2.31</b>
065 Leather Without Hair	0.2973	182.58	182.58	181.35	+ 0.00	+ 0.68
066 Other Leather N.E.C	0.2567	164.62	164.62	158.95	+ 0.00	+ 3.57
067 Footwears	0.1575	240.49	240.49	232.83	+ 0.00	+ 3.29
<b>Other Transportable Goods</b>	<b>22.3979</b>	<b>342.57</b>	<b>351.85</b>	<b>395.00</b>	<b>- 2.64</b>	<b>- 13.27</b>
068 Timber	0.0165	241.74	237.23	220.84	+ 1.90	+ 9.46
069 Printing Paper	0.4279	262.88	265.00	260.23	- 0.80	+ 1.02
070 Hard Board	0.1579	261.62	261.62	209.29	+ 0.00	+ 25.00
071 Motor Spirit	1.6268	359.97	375.16	453.76	- 4.05	- 20.67
072 Diesel Oil	5.4849	319.13	338.72	428.57	- 5.78	- 25.54
073 Kerosene Oil	0.2151	321.73	341.50	469.05	- 5.79	- 31.41
074 Furnace Oil	3.2664	572.56	596.76	782.23	- 4.06	- 26.80
075 Mobil Oil	0.7114	251.76	251.76	236.05	+ 0.00	+ 6.66
076 Chemicals	1.7720	271.56	272.48	313.13	- 0.34	- 13.28
077 Dyeing Material	0.1539	272.52	272.52	220.27	+ 0.00	+ 23.72
078 Fertilizers	2.8657	281.82	282.26	234.76	- 0.16	+ 20.05
079 Pesticides	0.2763	196.04	194.46	184.92	+ 0.81	+ 6.01
080 Insecticides	0.1276	174.37	174.37	151.05	+ 0.00	+ 15.44
081 Paints & Varnishes	0.1916	271.19	271.19	265.65	+ 0.00	+ 2.09
082 Medicines	1.1428	345.47	343.85	297.82	+ 0.47	+ 16.00
083 Soaps & Detergents	0.8168	234.03	229.24	225.36	+ 2.09	+ 3.85
084 Auto Tyres	0.2703	261.63	256.26	251.53	+ 2.10	+ 4.02
085 Plastic Products	0.4550	204.51	203.37	187.43	+ 0.56	+ 9.11
086 Glass sheets	0.2089	360.22	360.02	337.66	+ 0.06	+ 6.68
087 Other Glass Articles	0.1635	213.85	209.73	207.34	+ 1.96	+ 3.14
088 Ceramics & Sanitary Fixture	0.0244	222.47	211.19	190.71	+ 5.34	+ 16.65
089 Bricks, Blocks & Tiles	0.1566	201.50	201.49	185.18	+ 0.00	+ 8.81
090 Cement	1.8145	295.50	294.46	232.20	+ 0.35	+ 27.26
091 Bed Foam	0.0006	329.70	329.70	313.17	+ 0.00	+ 5.28
092 Matches	0.0505	3329.35	3323.96	3291.67	+ 0.16	+ 1.14
<b>Metal Product, Machinery &amp; Equipments</b>	<b>8.7156</b>	<b>389.29</b>	<b>389.55</b>	<b>375.20</b>	<b>- 0.07</b>	<b>+ 3.76</b>
093 Steel Bar & Sheets	1.4615	342.57	350.01	392.31	- 2.13	- 12.68
094 Pipe Fittings	0.0780	455.71	455.71	412.86	+ 0.00	+ 10.38
095 Steel Products	0.3879	263.06	263.05	240.83	+ 0.00	+ 9.23
096 Engines & Motors	0.0046	186.89	186.89	145.36	+ 0.00	+ 28.57
097 Vacuum Pumps	0.0155	107.56	107.56	107.56	+ 0.00	+ 0.00
098 Air Conditioners	0.0049	310.06	311.25	312.92	- 0.38	- 0.91
099 Cultivators	0.0551	351.39	351.39	316.81	+ 0.00	+ 10.92
100 Chuff Cutter	0.1293	504.72	504.72	504.72	+ 0.00	+ 0.00
101 Tractors	0.0028	320.14	320.14	297.43	+ 0.00	+ 7.64
102 Lathe Machines	0.0525	482.10	482.10	462.80	+ 0.00	+ 4.17
103 Concrete Mixture	0.0107	426.37	426.37	303.98	+ 0.00	+ 40.26
104 Fridge,WashM,SewM,Fans,Iron	1.1645	296.87	296.42	263.90	+ 0.15	+ 12.49
105 Electric Wires	0.0912	327.08	319.58	263.39	+ 2.35	+ 24.18
106 Lighting Equipments	1.4431	750.20	744.34	679.55	+ 0.79	+ 10.40
107 Radio & Television	0.1843	190.53	196.31	196.21	- 2.94	- 2.89
108 Motor Vehicles	0.0244	256.95	256.95	255.73	+ 0.00	+ 0.48
109 Motorcycles	0.2570	263.76	263.76	263.76	+ 0.00	+ 0.00
110 Bicycles	3.3483	318.93	318.93	308.80	+ 0.00	+ 3.28

\*\*\*\*\*