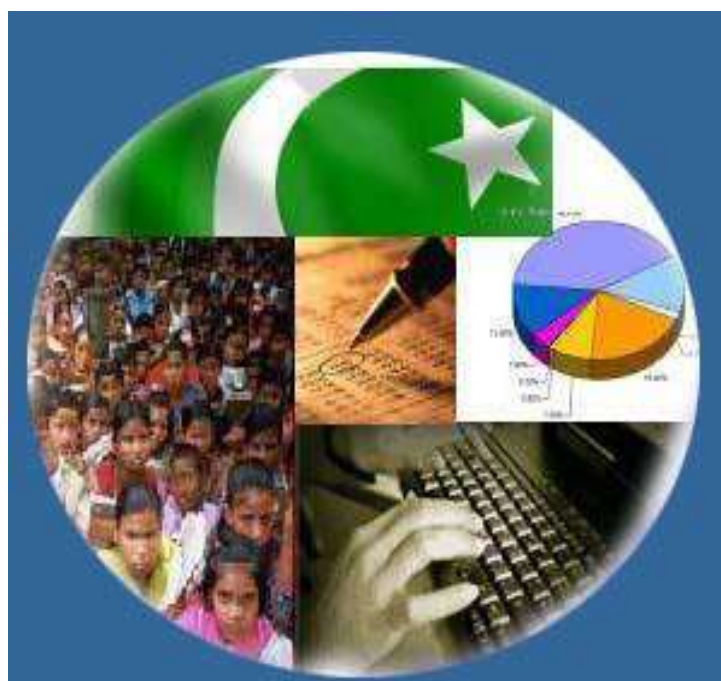




Monthly Review on Price Indices



September, 2022
(Base Year 2015-16)

Government of Pakistan
Ministry of Planning, Development & Special Initiatives
Pakistan Bureau of Statistics
Islamabad

PRICE STATISTICS TEAM

S#	Name	Designation
1.	Dr. Naeem Uz Zafar	Chief Statistician
2.	Syed Ejaz Wasti	Member (National Accounts/Prices)
3.	Dr. Bahrawar Jan	Deputy Director General
4.	Mr. Naseer Ahmad	Director
5.	Dr. Ahtasham Gul	Chief Statistical Officer
6.	Mr. Tauseef ul Hai Khan	Assistant Census Commissioner
7.	Mr. Adnan Shams	Statistical Officer
8.	Mr. Muhammad Mazhar	Statistical Officer
9.	Mr. Shahzad	Statistical Officer
7.	Mr. Umar Farooq	Statistical Assistant
8.	Mrs. Madiha Gulfraz	Statistical Assistant
9.	Mrs. Humail Fatima	Statistical Assistant
10	Sheikh Muhammad Umar Farooq	Statistical Assistant
11.	Mr. Ansar Mahmood	Statistical Assistant

IT & SOFTWARE TEAM

1.	Mrs. Sobia Munawar	Director (DP)
2.	Mr. Muhammad Ehtesham	Director (DP)
3.	Mr. Arsalan Bashir	Data Processing Officer
4.	Mr. Raja Aurangzeb	Data Processing Assistant
5.	Mr. Muhammad Kibria	Data Processing Assistant
6.	Mr. Muhammad Irfan Bajwa	Data Processing Assistant

Inflation in Brief

- CPI inflation General**, increased to 23.2% on year-on-year basis in Sep 2022 as compared to an increase of 27.3% in the previous month and 9.0% in Sep 2021. On month-on-month basis, it decreased by -1.2% in Sep 2022 as compared to an increase of 2.4% in the previous month and an increase of 2.1% in Sep 2021.
- CPI inflation Urban**, increased to 21.2% on year-on-year basis in Sep 2022 as compared to an increase of 26.2% in the previous month and 9.1% in Sep 2021. On month-on-month basis, it decreased by -2.1% in Sep 2022 as compared to an increase of 2.6% in the previous month and an increase of 2.0% in Sep 2021.
- CPI inflation Rural**, increased to 26.1% on year-on-year basis in Sep 2022 as compared to an increase of 28.8% in the previous month and 8.8% in Sep 2021. On month-on-month basis, it increased by 0.2% in Sep 2022 as compared to an increase of 2.2% in the previous month and an increase of 2.3% in Sep 2021.
- SPI inflation** on YoY increased to 28.6% in Sep 2022 as compared to an increase of 34.0% a month earlier and an increase of 16.6% in Sep 2021. On MoM basis, it decreased by -1.4% in Sep 2022 as compared to increase of 5.2% a month earlier and an increase of 2.7% in Sep 2021.
- WPI inflation** on YoY basis increased to 38.9% in Sep 2022 as compared to an increase of 41.2% a month earlier and an increase of 19.6% in Sep 2021. WPI inflation on MoM basis increased by 1.4% in Sep 2022 as compared to an increase of 3.1% a month earlier and an increase of 3.2% in corresponding month i.e. Sep 2021.
- Figures 1 and 2 show graphically the yearly data of Table 1.a for Urban and Rural CPI while Table 1.1 shows "Period Average" and "YoY" percent changes in indices of three years.

Table 1.a General Inflation (%) (Base 2015-16)																		
PERIOD	CPI														SPI**		WPI	
	General						Food				Non-Food							
	National		Urban		Rural		Urban		Rural		Urban		Rural		YoY	MoM	YoY	MoM
	YoY	MoM	YoY	MoM	YoY	MoM	YoY	MoM	YoY	MoM	YoY	MoM	YoY	MoM				
Dec-20	8.0	-0.7	7.0	-0.3	9.5	-1.2	12.6	-2.1	13.4	-3.4	3.8	0.7	6.1	1.0	9.1	-2.7	5.7	0.3
Jan-21	5.7	-0.2	5.0	-0.2	6.6	-0.3	7.3	-2.1	7.2	-2.2	3.7	1.1	6.1	1.5	7.7	-0.8	6.4	2.5
Feb-21	8.7	1.8	8.6	2.3	8.8	1.1	10.3	1.3	9.1	0.2	7.6	2.8	8.6	2.0	11.9	3.1	9.5	2.2
Mar-21	9.1	0.4	8.7	0.3	9.5	0.5	11.5	1.7	11.1	1.5	7.1	-0.6	8.1	-0.4	18.7	5.7	14.6	3.7
Apr-21	11.1	1.0	11.0	1.3	11.3	0.6	15.7	2.7	14.1	0.9	8.2	0.5	8.9	0.3	21.3	0.4	16.6	-0.4
May-21	10.9	0.1	10.8	0.2	10.9	-0.03	15.3	1.1	12.8	0.2	8.3	-0.3	9.2	-0.3	19.7	0.8	19.4	0.3
Jun-21	9.7	-0.3	9.6	-0.4	9.7	-0.1	11.0	-1.9	9.8	-0.8	8.8	0.5	9.7	0.6	17.6	-0.4	20.9	0.9
Jul-21	8.4	1.3	8.7	1.3	8.0	1.4	9.4	1.5	7.3	1.6	8.2	1.1	8.7	1.2	16.2	1.8	17.3	2.3
Aug-21	8.4	0.6	8.3	0.5	8.4	0.7	10.2	0.5	9.1	0.8	7.2	0.5	7.7	0.6	15.9	0.7	17.1	1.2
Sep-21	9.0	2.1	9.1	2.0	8.8	2.3	10.8	3.6	9.1	3.7	8.1	1.1	8.5	1.0	16.6	2.7	19.6	3.2
Oct-21	9.2	1.9	9.6	1.7	8.7	2.2	9.4	1.5	7.2	2.6	9.7	1.8	10.0	1.9	15.2	2.1	21.2	4.2
Nov-21	11.5	3.0	12.0	2.9	10.9	3.1	11.9	3.9	8.6	3.3	12.0	2.2	13.0	3.0	18.1	3.6	27.0	3.8
Dec-21	12.3	-0.02	12.7	0.3	11.6	-0.5	11.7	-2.3	9.0	-3.1	13.4	2.0	14.0	1.9	20.9	-0.4	26.2	-0.2
Jan-22	13.0	0.4	13.0	0.1	12.9	0.9	13.3	-0.8	11.8	0.4	12.8	0.6	13.9	1.4	20.9	-0.8	24.0	0.6
Feb-22	12.2	1.2	11.5	0.9	13.3	1.5	14.3	2.2	14.6	2.6	9.9	0.2	12.2	0.4	18.7	1.3	23.6	1.9
Mar-22	12.7	0.8	11.9	0.7	13.9	1.0	14.5	1.8	15.5	2.3	10.4	-0.1	12.5	-0.2	13.0	0.6	23.8	3.9
Apr-22	13.4	1.6	12.2	1.6	15.1	1.6	15.6	3.7	17.7	2.8	10.2	0.3	12.8	0.5	14.2	1.5	28.1	3.2
May-22	13.8	0.4	12.4	0.3	15.9	0.6	15.5	1.0	19.0	1.3	10.4	-0.1	13.1	0.0	14.1	0.6	29.6	1.4
Jun-22	21.3	6.3	19.8	6.2	23.6	6.6	24.0	5.3	27.0	6.0	17.3	6.8	20.4	7.1	21.7	6.2	38.9	8.2
Jul-22	24.9	4.3	23.6	4.5	26.9	4.2	27.4	4.3	29.6	3.7	21.3	4.6	24.5	4.6	28.2	7.3	38.5	2.0
Aug-22	27.3	2.4	26.2	2.6	28.8	2.2	28.8	1.6	30.2	1.2	24.7	3.3	27.5	3.1	34.0	5.2	41.2	3.1
Sep-22	23.2	-1.2	21.2	-2.1	26.1	0.2	30.8	5.2	32.7	5.7	15.2	-6.6	20.1	-4.9	28.6	-1.4	38.9	1.4

** SPI for quintile 1. Digits 0.0* are due to rounding off.

Core inflation (NFNE)

7. Measured by **non-food non-energy Urban** increased to 14.4% on (YoY) basis in Sep, 2022 as compared to an increase of 13.8% in the previous month and 6.4% in Sep, 2021. On (MoM) basis, it increased by 0.9% in Sep, 2022 as compared to an increase of 1.8% in previous month, and an increase of 0.4% in corresponding month of last year i.e. Sep, 2021.
8. Measured by **non-food non-energy Rural** increased to 17.6% on (YoY) basis in Sep, 2022 as compared to an increase of 16.5% in the previous month and 6.2% in Sep, 2021. On (MoM) basis, it increased by 1.4% in Sep, 2022 as compared to an increase of 1.8% in previous month, and an increase of 0.5% in corresponding month of last year i.e. Sep, 2021.

Core inflation (Trimmed)

9. Measured by 20% **weighted trimmed mean Urban** increased to 19.5% on (YoY) basis in Sep, 2022 as compared to 21.4% in the previous month and 8.7% in Sep, 2021. On (MoM) basis, it increased by 1.6% in Sep, 2022 as compared to an increase of 1.7% in the previous month and an increase of 0.9% in corresponding month of last year i.e. Sep, 2021.
10. Measured by 20% **weighted trimmed mean Rural** increased to 24.4% on (YoY) basis in Sep, 2022 as compared to 23.8% in the previous month and by 8.2% in Sep, 2021. On (MoM) basis, it increased by 2.5% in Sep, 2022 as compared to an increase of 1.8% in the previous month and an increase of 1.2% in corresponding month of last year i.e. Sep, 2021.

Table 1.b Core Inflation (%) (Base 2015-16)

Period	NFNE				Trimmed			
	Urban		Rural		Urban		Rural	
	YoY	MoM	YoY	MoM	YoY	MoM	YoY	MoM
Sep-21	6.4	0.4	6.2	0.5	8.7	0.9	8.2	1.2
Oct-21	6.7	0.9	6.7	1.0	8.7	1.1	8.2	1.6
Nov-21	7.6	1.1	8.2	1.8	9.8	1.7	9.5	2.2
Dec-21	8.3	1.1	8.9	1.1	10.8	1.1	10.3	1.0
Jan-22	8.2	0.8	9.0	1.2	10.6	0.5	10.9	1.1
Feb-22	7.8	0.8	9.4	0.9	9.8	0.8	11.3	1.2
Mar-22	8.9	1.2	10.3	1.1	10.5	0.8	11.7	0.8
Apr-22	9.1	1.1	10.9	1.2	10.5	0.9	12.8	0.9
May-22	9.7	0.7	11.5	0.9	10.7	0.8	14.1	1.4
Jun-22	11.5	2.0	13.6	2.3	16.7	3.5	19.1	4.3
Jul-22	12.0	1.2	14.6	1.6	19.1	2.7	21.7	2.7
Aug-22	13.8	1.8	16.5	1.8	21.4	1.7	23.8	1.8
Sep-22	14.4	0.9	17.6	1.4	19.5	1.6	24.4	2.5

Table 1.1 Period Average and Y-o-Y % Change

INDEX	Average July - September % changes			September over September % changes		
	2022-2023	2021-2022	2020-2021	2022-2023	2021-2022	2020-2021
CPI (National)	25.11	8.58	8.84	23.18	8.98	9.04
CPI (Urban)	23.66	8.70	7.55	21.20	9.13	7.68
CPI (Rural)	27.27	8.40	10.85	26.12	8.77	11.12
SPI	30.23	16.25	12.46	28.58	16.63	11.98
WPI	39.55	18.02	3.58	38.87	19.61	4.26

Figure 1: Urban Inflation - YoY, Special Indices

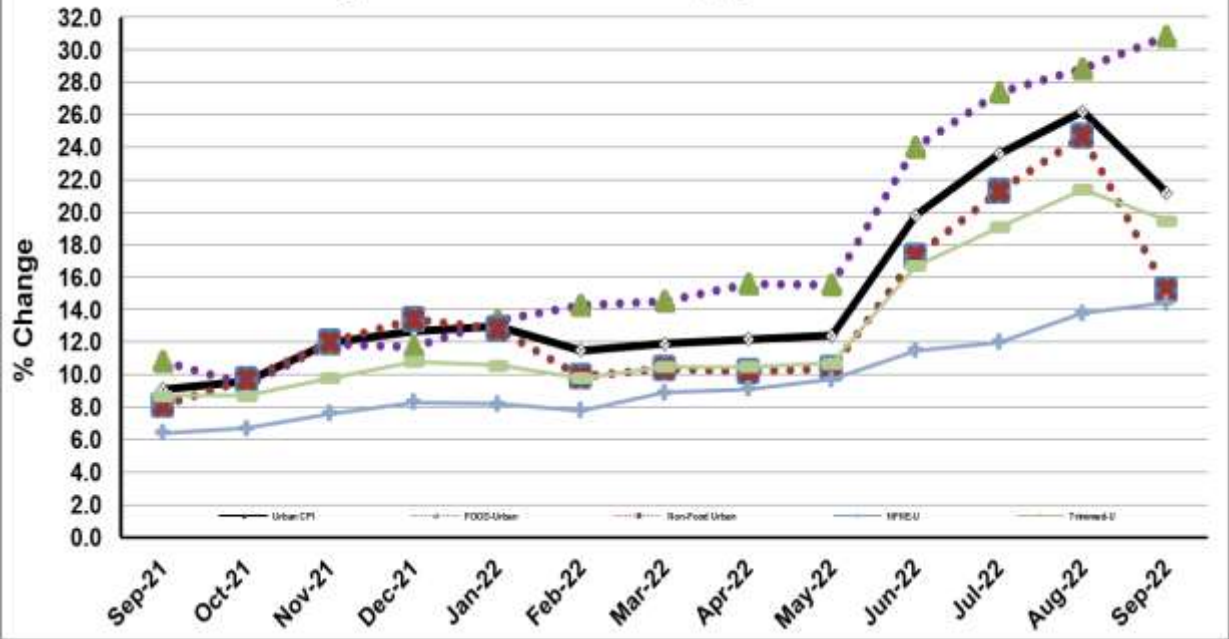
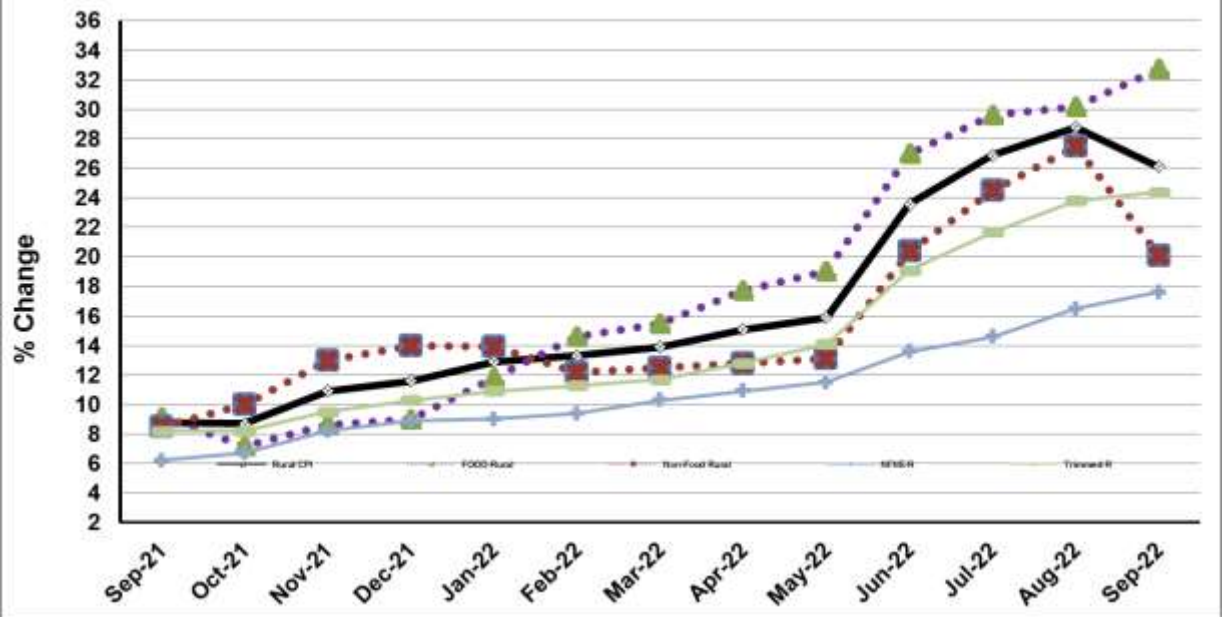


Figure 2: Rural Inflation - YoY, Special Indices



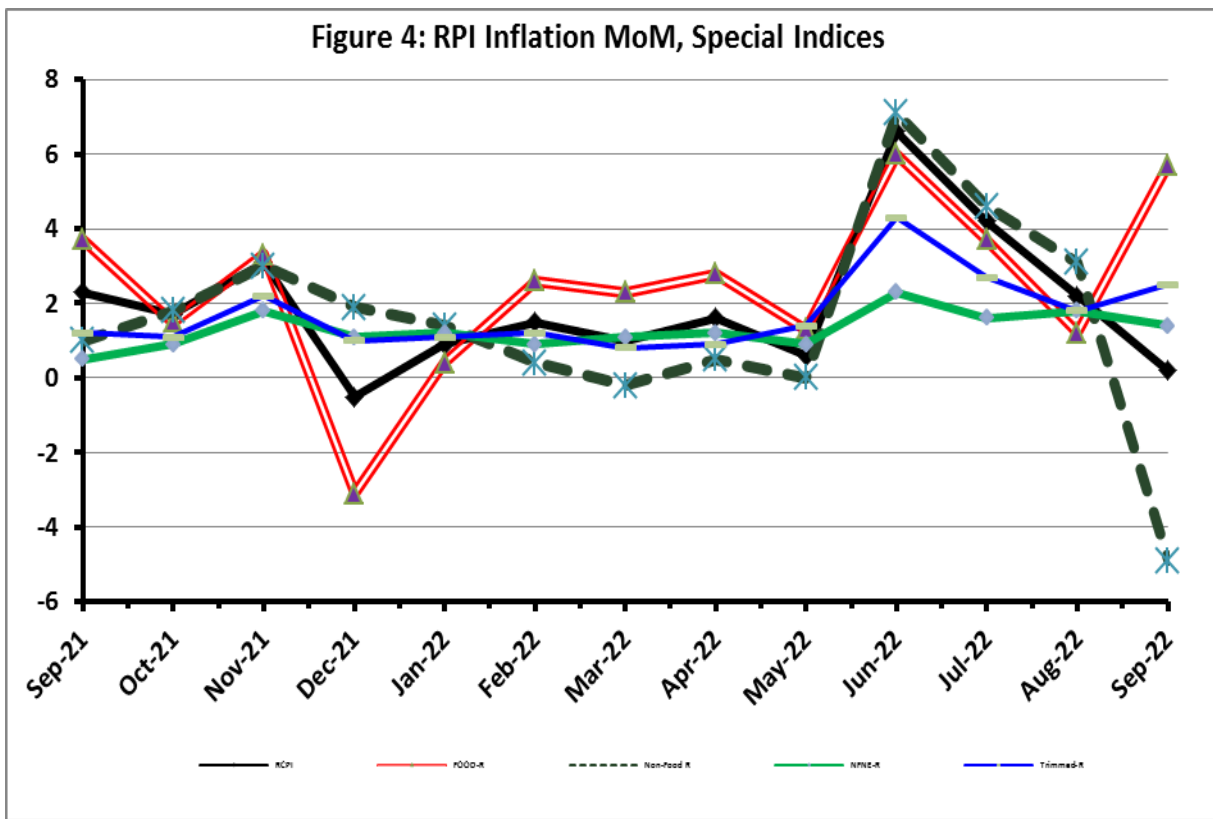
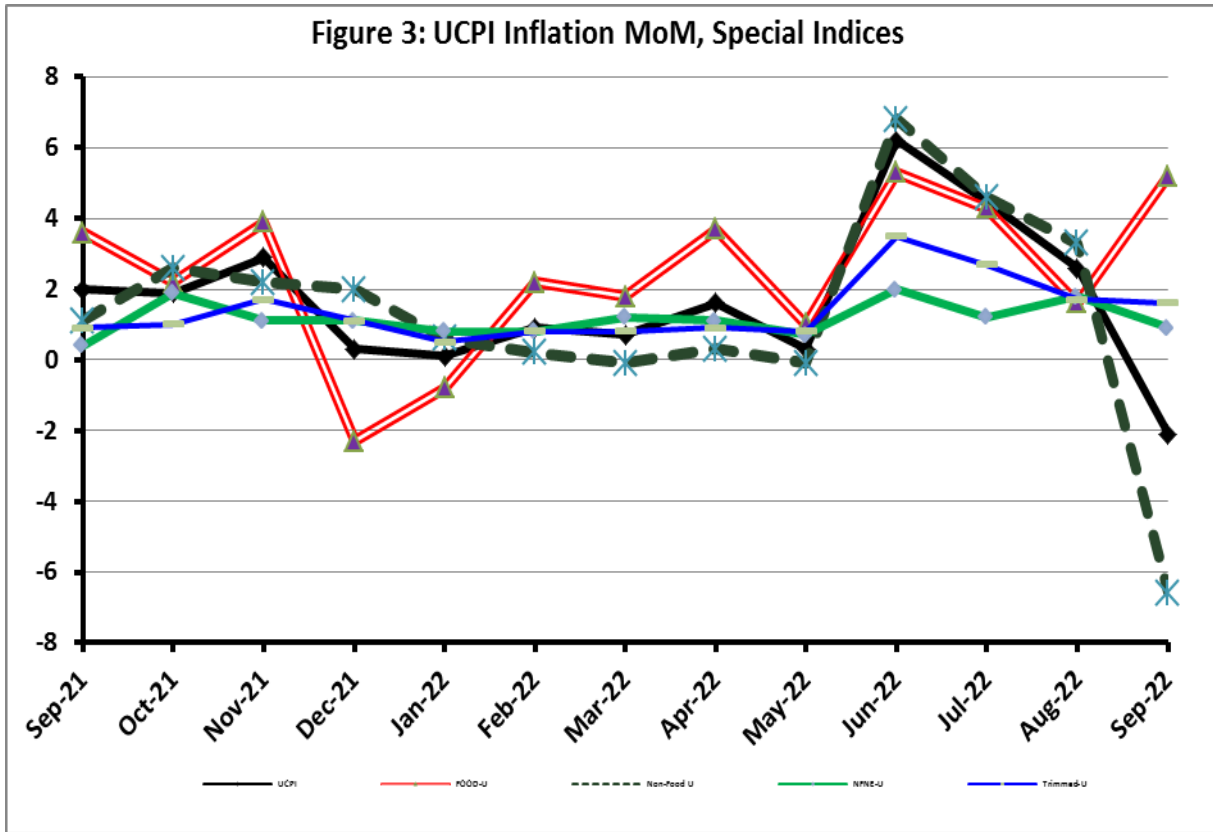


Figure 5: CPI Y.o.Y (National, Urban, Rural)

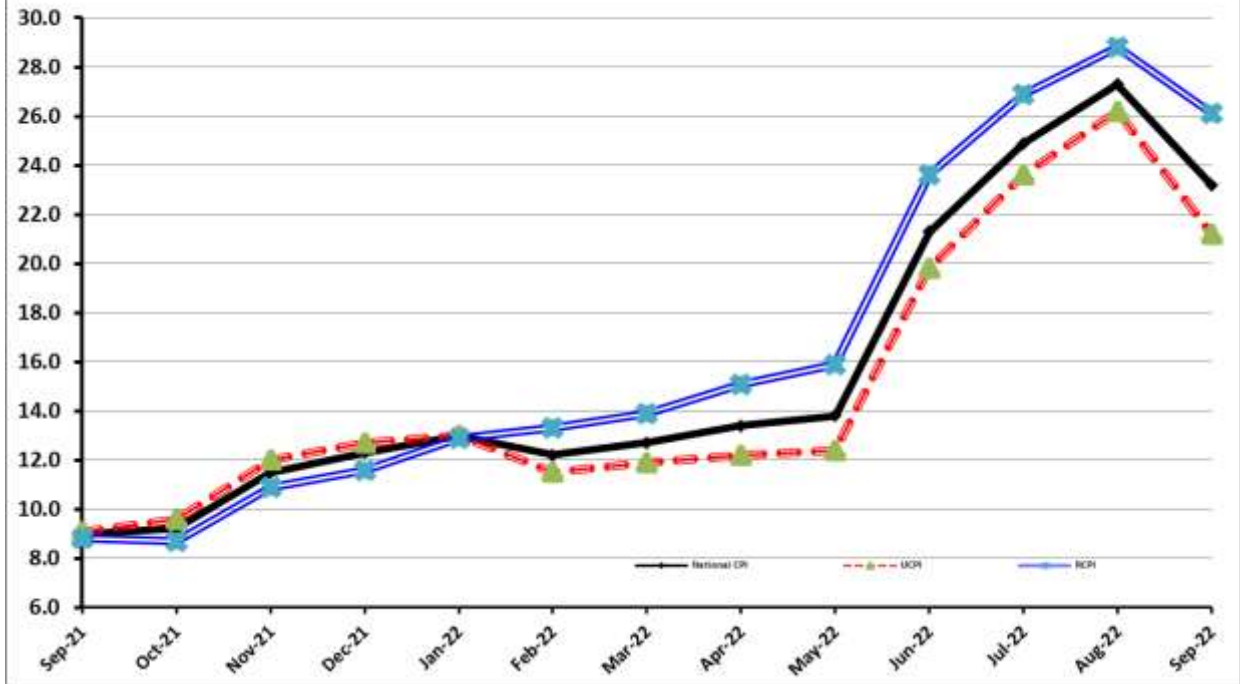
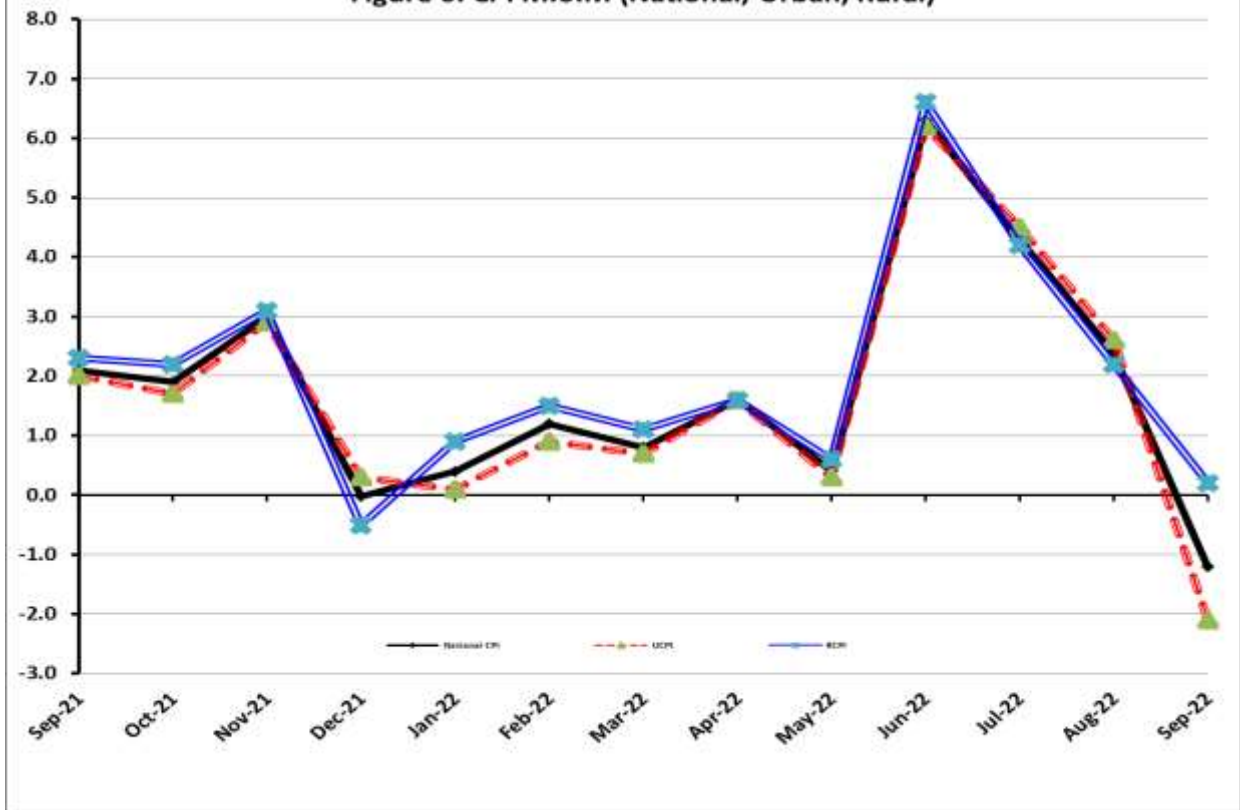


Figure 6: CPI M.o.M (National, Urban, Rural)



I. National Consumer Price Index (N-CPI)

The **National Consumer Price Index** for **Sep 2022** is **decreased** by -1.15% over **August 2022** and increased to 23.18% over corresponding month of the last year i.e. **Sep 2021**.

Table 1: Consumer Price Index (National) by Group of Commodities and Services (Base 2015-16)									
No	Group	Group Weight (%)	Indices			% Change Sep 2022 Over		Impact (In % points) Sep 2022 Over	
			Sep 22	Aug 22	Sep 21	Aug 22	Sep 21	Aug 22	Sep 21
	General	100.00	185.68	187.84	150.74	-1.15	23.18	-1.15	23.18
1.	Food & Non-alcoholic Bev.	34.58	209.21	197.81	158.85	5.76	31.70	2.10	11.55
	<i>Non-perishable Food Items</i>	29.60	206.34	198.29	160.25	4.06	28.76	1.27	9.05
	<i>Perishable Food Items</i>	4.99	226.31	195.00	150.57	16.06	50.30	0.83	2.50
2.	Alcoholic Bev. & Tobacco	1.02	192.67	181.99	145.23	5.87	32.67	0.06	0.32
3.	Clothing & Footwear	8.60	176.73	176.21	150.16	0.30	17.70	0.02	1.52
4.	Housing, Water, Electricity, Gas & Fuels	23.63	150.24	182.46	145.34	-17.66	3.37	-4.05	0.77
5.	Furnishing & Household Equipment Maintenance	4.10	181.36	175.38	145.02	3.41	25.06	0.13	0.99
6.	Health	2.79	177.45	173.64	155.97	2.19	13.77	0.06	0.40
7.	Transport	5.91	249.96	244.55	151.96	2.22	64.49	0.17	3.84
8.	Communication	2.21	111.39	111.32	109.97	0.07	1.29	0.00	0.02
9.	Recreation & Culture	1.59	160.49	157.29	130.73	2.04	22.76	0.03	0.31
10.	Education	3.79	161.32	161.31	146.68	0.00	9.97	0.00	0.37
11.	Restaurants & Hotels	6.92	188.01	183.90	145.96	2.23	28.81	0.15	1.93
12.	Miscellaneous	4.87	192.73	185.67	156.86	3.80	22.86	0.18	1.16

II. Urban Consumer Price Index (UCPI)

The Urban Consumer Price Index for **Sep 2022** is decreased by -2.06% over **August 2022** and increased to 21.20% over corresponding month of the last year i.e. **Sep 2021**.

Table 2: Consumer Price Index (Urban) by Group of Commodities and Services (Base 2015-16)

No	Group	Group Weight (%)	Indices			% Change Sep 2022 Over		Impact (In % points) Sep 2022 Over	
			Sep 22	Aug 22	Sep 21	Aug 22	Sep 21	Aug 22	Sep 21
	General	100.00	181.90	185.72	150.08	-2.06	21.20	-2.06	21.20
1.	Food & Non-alcoholic Bev.	30.42	207.23	196.59	158.53	5.41	30.72	1.74	9.87
	<i>Non-perishable Food Items</i>	25.97	204.67	196.88	160.03	3.96	27.89	1.09	7.72
	<i>Perishable Food Items</i>	4.46	222.20	194.91	149.79	14.00	48.34	0.65	2.15
2.	Alcoholic Bev. & Tobacco	0.85	206.74	193.60	154.23	6.79	34.05	0.06	0.30
3.	Clothing & Footwear	8.01	174.86	174.62	147.12	0.14	18.86	0.01	1.48
4.	Housing, Water, Electricity, Gas & Fuels	27.03	147.50	179.33	145.99	-17.75	1.03	-4.63	0.27
5.	Furnishing & Household Equip. & Maintenance	4.09	179.01	171.90	144.03	4.14	24.29	0.16	0.95
6.	Health	2.31	176.15	174.36	156.84	1.03	12.31	0.02	0.30
7.	Transport	6.14	250.71	245.69	153.57	2.04	63.25	0.17	3.97
8.	Communication	2.35	113.68	113.61	112.32	0.06	1.21	0.00	0.02
9.	Recreation & Culture	1.73	154.54	151.58	127.58	1.95	21.13	0.03	0.31
10.	Education	4.88	163.69	163.68	148.76	0.01	10.04	0.00	0.49
11.	Restaurants & Hotels	7.41	187.90	182.80	145.51	2.79	29.13	0.20	2.09
12.	Miscellaneous	4.77	192.34	185.12	156.29	3.90	23.07	0.19	1.15

Main contributors to month-on-month and year-on-year percentage changes are given below and detail is given in **Annexure-A**.

1. MONTH-ON-MONTH Top few commodities which varied from previous month are given below:

FOOD

Increased: Tomatoes (33.86%), Vegetables (22.70%), Pulse Moong (19.53%), Potatoes (17.43%), Wheat (15.35%), Eggs (14.20%), Chicken (13.05%), Tea (11.59%), Besan (9.74%), Cigarettes (8.21%), Pulse Gram (6.90%), Pulse Mash (6.25%), Beans (3.21%) and Milk (2.96%).

Decreased: Vegetable Ghee (4.50%), Onions (3.86%), Pulse Masoor (3.08%), Cooking Oil (1.89%) and Sugar (0.93%).

NON-FOOD

Increased: Washing Soap/Detergents/Match Box (8.30%), Liquefied Hydrocarbons (6.34%), Stationery (6.01%), Motor Vehicle Accessories (5.22%), Plastic Products (5.14%), Motor Fuel (3.19%), Furniture & Furnishing (2.22%) and Construction Input Items (1.71%).

Decreased: Electricity Charges (65.33%) and Motor Vehicles (2.43%).

YEAR-ON-YEAR: Top few commodities which varied from corresponding month of previous year i.e. Sep, 2021 are given below:

FOOD

Increased: Tomatoes (127.81%), Pulse Masoor (79.54%), Gram Whole (74.48%), Mustard Oil (71.85%), Vegetables (67.16%), Cooking Oil (65.33%), Pulse Gram (64.20%), Besan (58.47%), Vegetable Ghee (57.16%), Pulse Mash (56.3%), Wheat (55.31%), Rice (39.82%), Pulse Moong (38.86%), Onions (38.27%), Potatoes (37.33%), Tea (35.57%), Cigarettes (35.40%), Eggs (35.00%) and Milk (28.58%).

Decreased: Sugar (18.94%) and Condiments & Spices (14.10%)

NON-FOOD

Increased: Motor Fuel (86.96%), Liquefied Hydrocarbons (53.20%), Stationery (52.42%), Cleaning & Laundering (39.12%), Washing Soap/Detergents/Match Box (37.65%), Motor Vehicle Accessories (32.77%), Construction Input Items (29.36%), Cotton cloth (23.68%) and Plastic Products (20.89%).

Decreased: Electricity charges (30.48%).

III. Rural Consumer Price Index (RCPI)

The Rural Consumer Price Index for Sep 2022 is increased by 0.18% over August 2022 and increased by 26.12% over corresponding month of the last year i.e. Sep 2021.

Table 3: Consumer Price Index (Rural) by Group of Commodities and Services (Base 2015-16)

No	Group	Group Weight (%)	Indices			% Change Sep 2022 Over		Impact (In % points) Sep 2022 Over	
			Sep 22	Aug 22	Sep 21	Aug 22	Sep 21	Aug 22	Sep 21
	General	100.00	191.38	191.04	151.74	0.18	26.12	0.18	26.12
1.	Food & Non-alcoholic Bev.	40.87	211.44	199.18	159.22	6.16	32.80	2.62	14.07
	<i>Non-perishable Food Items</i>	35.08	208.21	199.86	160.49	4.18	29.73	1.53	11.03
	<i>Perishable Food Items</i>	5.79	231.08	195.10	151.47	18.44	52.56	1.09	3.04
2.	Alcoholic Bev. & Tobacco	1.28	178.49	170.28	136.16	4.82	31.09	0.06	0.36
3.	Clothing & Footwear	9.48	179.11	178.23	154.03	0.49	16.28	0.04	1.57
4.	Housing, Water, Electricity, Gas & Fuels	18.49	156.28	189.36	143.90	-17.47	8.60	-3.20	1.51
5.	Furnishing & Household Equip. & Maintenance	4.10	184.89	180.63	146.50	2.36	26.20	0.09	1.04
6.	Health	3.51	178.73	172.92	155.10	3.36	15.24	0.11	0.55
7.	Transport	5.56	248.72	242.64	149.28	2.51	66.61	0.18	3.64
8.	Communication	1.99	107.32	107.24	105.80	0.07	1.44	0.00	0.02
9.	Recreation & Culture	1.38	171.77	168.11	136.71	2.18	25.65	0.03	0.32
10.	Education	2.13	153.12	153.12	139.52	0.00	9.75	0.00	0.19
11.	Restaurants & Hotels	6.19	188.21	185.90	146.78	1.24	28.23	0.07	1.69
12.	Miscellaneous	5.02	193.29	186.45	157.69	3.67	22.58	0.18	1.18

Main contributors to Month-on-Month and Year-on-Year percentage changes are given below and detail is given in **Annexure-B**.

1. MONTH-ON-MONTH Top few commodities which varied from previous month are given below:

FOOD

Increased: Tomatoes (72.34%), Vegetables (26.31%), Eggs (15.87%), Pulse Moong (14.47%), Potatoes (12.67%), Chicken (10.92%), Wheat (9.66%), Besan (7.86%), Tea (7.52%), Condiments & Spices (6.60%), Pulse Mash (4.87%), Cigarettes (4.82%) and Milk (4.45%).

Decreased: Fruits (3.40%), Pulse Masoor (3.07%), Vegetable Ghee (1.6%) and Cooking Oil (0.65%).

NON-FOOD

Increased: Liquefied Hydrocarbons (11.40%), Washing Soaps, Detergents and Match Box (4.26%), Stationery (2.71%), Motor Vehicles Accessories (2.68%), Solid Fuel (2.27%), Construction Input Items (2.13%), Readymade Garments (2.03%) and Plastic Products (1.75%).

Decreased: Electricity Charges (65.33%).

2. YEAR-ON-YEAR: Top few commodities which varied from corresponding month of previous year i.e. Sep 2021 are given below:

FOOD

Increased: Tomatoes (144.49%), Gram Whole (80.31%), Pulse Masoor (78.92%), Vegetables (68.64%), Mustard Oil (66.88%), Pulse Gram (63.57%), Cooking Oil (62.13%), Vegetable Ghee (60.74%), Pulse Mash (57.51%), Besan (53.35%), Wheat (43.27%), Onions (42.14%), Pulse Moong (41.73%), Eggs (39.40%), Rice (37.88%), and Potatoes (31.87%).

Decreased: Sugar (19.07%).

NON-FOOD

Increased: Motor Fuels (90.49%), Liquefied Hydrocarbons (67.99%), Construction Input Items (37.30%), Washing Soaps, Detergents and Match Box (32.56%), Cleaning & Laundering (31.92%), Motor Vehicles Accessories (30.51%), Stationery (30.47%), Solid Fuel (25.00%), Furniture & Furnishing (23.37%) and Plastic Products (22.84%).

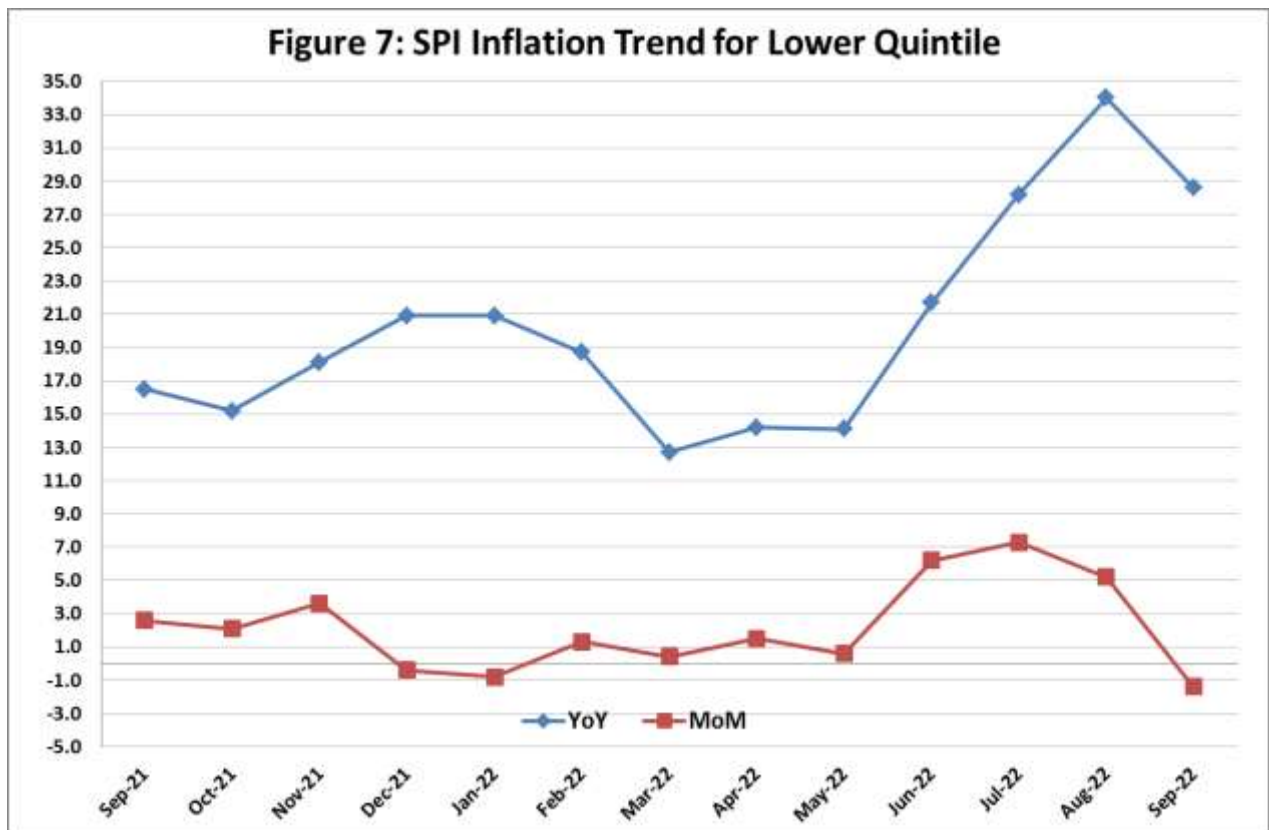
Decreased: Electricity Charges (30.48%).

IV. Sensitive Price Indicator

Quintile-wise percentage changes YoY and MoM are given below in Table 4. The series from Sep 2021 to Sep 2022 is also graphed below in Figure 7.

Table 4: Sensitive Price Indicator (Base 2015-16)					
Quintiles	Indices			% Change Sep 2022 Over	
	Sep 22	Aug 22	Sep 21	Aug 22	Sep 21
1	215.79	218.89	167.83	-1.42	28.58
2	197.34	213.06	157.28	-7.38	25.47
3	209.56	212.24	158.26	-1.26	32.42
4	207.82	207.15	154.35	0.32	34.64
5	218.98	214.18	155.83	2.24	40.52
Combined	211.86	213.22	155.94	-0.64	35.86

Table 4.1 : Weekly Percentage Change of SPI During Sep - 2022					
Quintiles	% Change with Previous week				
	01-09-2022	08-09-2022	15-09-2022	22-09-2022	29-09-2022
Quintile 1	1.63	-1.52	-0.31	-8.45	1.55
Combined	1.31	-0.58	-0.19	-8.11	0.94



V. Wholesale Price Index

The Wholesale Price Index for Sep, 2022 increased to 1.43% over August, 2022. It increased to 38.87% over the corresponding month of the last year i.e. Sep, 2021. YoY and MoM movements, from Sep, 2021 to Sep, 2022 are also graphed below in Figure 8.

Table 5: Wholesale Price Index by Group of Commodities (Base 2015-16)

No	Group	Group Weight (%)	Indices			% Change Sep 2022 Over		Impact (In % points) Sep 2022 Over	
			Sep 22	Aug 22	Sep 21	Aug 22	Sep 21	Aug 22	Sep 21
	General	100.00	243.30	239.87	175.20	1.43	38.87	1.43	38.87
1	Agriculture Forestry & Fishery	25.77	245.89	222.12	174.92	10.70	40.57	2.55	10.44
2	Ores/Minerals, Elec., Gas & Water	12.01	202.73	250.75	174.24	-19.15	16.35	-2.40	1.95
3	Food, Beverages, Tobacco, Textiles & Leather Products	31.11	208.20	203.25	169.86	2.44	22.57	0.64	6.81
	i. Food Products, Beverages & Tobacco	20.07	207.35	201.27	163.60	3.02	26.74	0.51	5.01
	ii. Textiles & Apparels	10.33	213.21	211.23	185.33	0.94	15.04	0.09	1.64
	iii. Leather Products	0.71	159.57	143.51	122.09	11.19	30.70	0.05	0.15
4	Other Transportable Goods	22.40	312.55	313.08	185.27	-0.17	68.70	-0.05	16.27
5	Metal Product, Machinery & Equipment	8.72	238.86	219.95	170.50	8.60	40.09	0.69	3.40

Main contributors to month-on-month and year-on-year percentage changes are given below and detail is given in **Annexure-C**.

1. MONTH-ON-MONTH: Top few commodities which varied from previous month are given below:

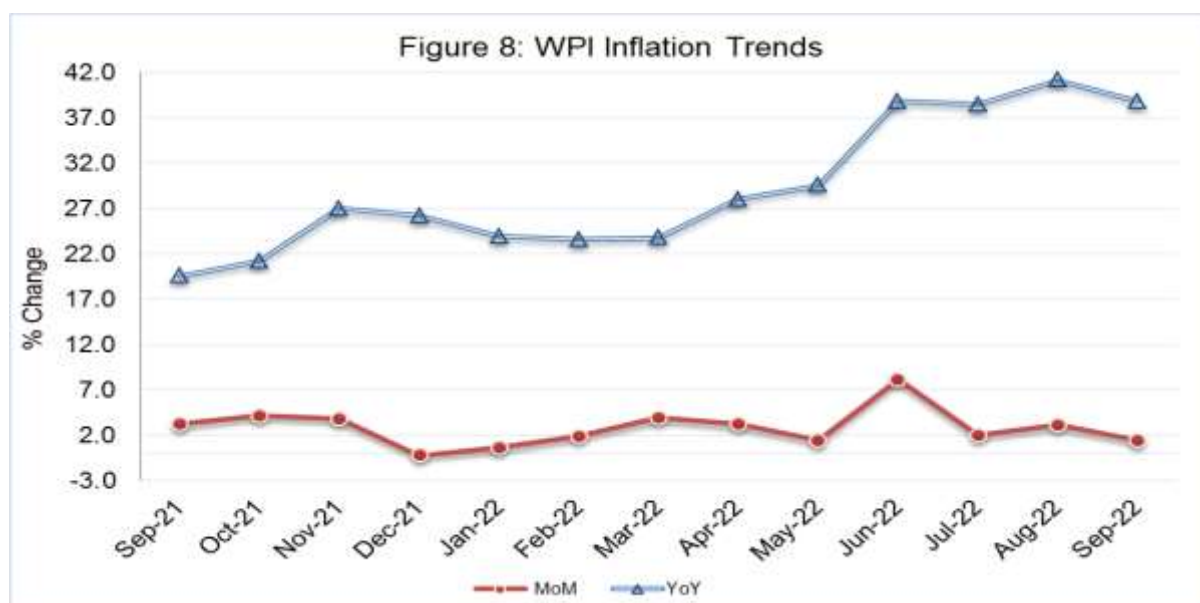
Increased: Potatoes (28.20%), Stimulant & Spice Crops (20.07%), Fibre Crops (18.53%), Vegetables (18.34%), Wheat (17.84%), Printing Paper (16.74%), Eggs (15.98%), Wheat Flour (14.79%), Poultry (13.38%), Leather Without Hair (10.83%) and Mobil Oil (8.41%).

Decreased: Electrical Energy (34.59%), Furnace Oil (6.67%), Vegetable Ghee (3.18%), Fruits (2.42%), Steel Bar & Sheets (1.82%), Sugar Refined (1.81%) and Cement (0.61%).

2. YEAR-ON-YEAR: Top few commodities which varied from previous year are given below:

Increased: Chuff Cutter (162.76%), Concrete Mixture (139.71%), Kerosene Oil (131.83%), Diesel Oil (120.67%), Lighting Equipments (106.79%), Motor Spirit (95.96%), Vegetables (79.94%), Coal (79.42%), Pulses (76.38%), Chemicals (74.67%), Fertilizers (73.58%), Cultivators (68.18%), Bed Foam (65.59%), Vegetable Ghee (59.35%), Wheat (58.55%), Pipe Fittings (58.24%), Glass sheets (56.37%), Tractors (52.06%), Furnace Oil (51.63%), Vegetable Oils (49.46%), Cement (47.49%), Potatoes (46.49%) and Printing Paper (41.36%).

Decreased: Spices (39.43%), Sugar (18.93%), Bajra (15.38%) and Stimulant & Spice Crops (5.29%)



Annexure A:CPI (Urban) Index Numbers by Commodity Groups & Commodities (2015-16=100)

Item and Specification	Weight	Index Numbers			% Change in Sep 2022 over			
		Sep 22	Aug 22	Sep 21	Aug 2022	Sep 2021		
General	100.0000	181.90	185.72	150.08	-	2.06	+	21.20
Food and non-alcoholic Bevera	30.4215	207.23	196.59	158.53	+	5.41	+	30.72
01 Wheat	0.6120	257.21	222.98	165.61	+	15.35	+	<u>55.31</u>
02 Wheat flour	3.0075	201.80	183.94	162.31	+	9.71	+	24.33
03 Wheat products	0.0936	217.80	202.89	163.94	+	7.35	+	32.85
04 Besan	0.0830	201.53	183.65	127.17	+	9.74	+	<u>58.47</u>
05 Rice	1.1804	205.41	200.08	146.91	+	2.66	+	39.82
06 Bakery and confectionary	0.4770	195.92	187.99	149.97	+	4.22	+	30.64
07 Nimco	0.1224	217.31	208.32	150.40	+	4.32	+	44.49
08 Meat	2.0411	222.99	221.55	178.55	+	0.65	+	24.89
09 Chicken	1.3631	195.83	173.22	153.89	+	13.05	+	27.25
10 Fish	0.3855	125.68	124.28	113.33	+	1.13	+	10.90
11 Milk fresh	7.1070	187.11	181.73	145.52	+	2.96	+	28.58
12 Milk products	0.6407	188.82	181.53	149.61	+	4.02	+	26.21
13 Milk powder	0.3106	178.84	168.42	142.02	+	6.19	+	25.93
14 Eggs	0.5083	277.23	242.76	205.35	+	14.20	+	35.00
15 Butter	0.0932	276.94	253.18	195.79	+	9.38	+	41.45
16 Mustard oil	0.0120	305.22	307.72	177.61	-	0.81	+	<u>71.85</u>
17 Cooking oil	1.1016	326.01	332.30	197.19	-	1.89	+	<u>65.33</u>
18 Vegetable ghee	1.0324	325.77	341.11	207.28	-	4.50	+	<u>57.16</u>
19 Dry fruits	0.3299	157.54	156.73	137.28	+	0.52	+	14.76
20 Fresh fruits	1.4363	145.31	145.28	121.00	+	0.02	+	20.09
21 Pulse masoor	0.1624	221.57	228.62	123.41	-	3.08	+	<u>79.54</u>
22 Pulse moong	0.1697	158.15	132.31	113.89	+	19.53	+	38.86
23 Pulse mash	0.1152	170.74	160.69	109.24	+	6.25	+	<u>56.30</u>
24 Pulse gram	0.1660	207.96	194.53	126.65	+	6.90	+	<u>64.20</u>
25 Gram whole	0.0912	238.92	228.98	136.93	+	4.34	+	<u>74.48</u>
26 Beans	0.0408	209.01	202.50	174.20	+	3.21	+	19.98
27 Potatoes	0.4496	275.56	234.66	200.66	+	17.43	+	37.33
28 Onions	0.5928	194.70	202.51	140.81	-	3.86	+	38.27
29 Tomatoes	0.3459	337.04	251.78	147.95	+	33.86	+	<u>127.8</u>
30 Fresh vegetables	1.5306	261.98	213.51	156.72	+	22.70	+	<u>67.16</u>
31 Sugar	1.1130	140.96	142.29	173.90	-	0.93	-	18.94
32 Gur	0.0379	160.12	158.19	156.29	+	1.22	+	2.45
33 Honey	0.1017	165.75	165.75	137.01	+	0.00	+	20.98
34 Sweetmeat	0.3535	211.31	205.41	157.45	+	2.87	+	34.21
35 Ice cream	0.1044	165.52	154.93	146.51	+	6.84	+	12.98
36 Condiments and Spices	1.3340	185.67	178.29	216.14	+	4.14	-	14.10
37 Dessert preparation	0.0419	176.45	162.09	133.27	+	8.86	+	32.40
38 Tea	0.8427	196.24	175.86	144.75	+	11.59	+	35.57
39 Beverages	0.8906	157.93	154.76	133.86	+	2.05	+	17.98
Alcoholic Beverages, Tobacco	0.8540	206.74	193.60	154.23	+	6.79	+	34.05
40 Cigarettes	0.7167	191.04	176.54	141.09	+	8.21	+	35.40
41 Pan prepared	0.1373	288.67	282.61	222.80	+	2.14	+	29.56
Clothing and footwear	8.0096	174.86	174.62	147.12	+	0.14	+	18.86
42 Cotton cloth	2.2227	186.23	185.98	150.57	+	0.13	+	23.68
43 Woolen cloth	0.8361	162.27	162.06	142.33	+	0.13	+	14.01
44 Readymade garments	1.3196	163.56	163.28	139.71	+	0.17	+	17.07
45 Woolen readymade garments	0.4307	159.54	159.54	142.21	+	0.00	+	12.19
46 Tailoring	1.0741	179.69	179.26	153.06	+	0.24	+	17.40
47 Hosiery	0.4070	165.56	165.33	145.10	+	0.14	+	14.10
48 Dupatta	0.1713	147.10	145.46	130.01	+	1.13	+	13.15
49 Cleaning and laundering	0.0665	206.85	206.78	148.68	+	0.03	+	39.12
50 Footwear	1.4816	180.26	180.24	150.81	+	0.01	+	19.53
Housing, water, Elec., Gas an	27.0332	147.50	179.33	145.99	-	17.75	+	1.03
51 House rent	19.2558	147.94	147.94	140.07	+	0.00	+	5.62
52 Construction input items	0.3765	206.07	202.61	159.30	+	1.71	+	29.36
53 Construction wage rates	0.2025	184.17	183.05	158.01	+	0.61	+	16.56
54 Water supply	0.5269	170.32	166.58	162.68	+	2.25	+	4.70
55 Garbage collection	0.1064	207.57	207.57	177.21	+	0.00	+	17.13
56 Electricity charges	4.5562	101.93	294.00	146.62	-	<u>65.33</u>	-	30.48
57 Gas charges	1.0807	216.94	216.94	216.94	+	0.00	+	0.00
58 Liquefied Hydrocarbons	0.5064	300.85	282.91	196.38	+	6.34	+	<u>53.20</u>
59 Solid Fuel	0.4218	143.80	138.87	120.78	+	3.55	+	19.06

Annexure A:CPI (Urban) Index Numbers by Commodity Groups & Commodities (2015-16=100)

Item and Specification	Weight	Index Numbers			% Change in Sep 2022 over		
		Sep 22	Aug 22	Sep 21	Aug 2022	Sep 2021	
<i>Furnishing and household equi</i>	4.0937	179.01	171.90	144.03	+	4.14	+ 24.29
60 Furniture and furnishing	0.4750	172.49	168.75	144.91	+	2.22	+ 19.03
61 Carpets	0.0308	129.13	128.62	113.92	+	0.40	+ 13.35
62 Household textiles	0.3420	145.97	145.55	135.57	+	0.29	+ 7.67
63 Household Equipments	1.0032	176.98	173.47	147.60	+	2.02	+ 19.91
64 Plastic products	0.0536	158.42	150.67	131.04	+	5.14	+ 20.89
65 Major tools & Equipments	0.0084	171.69	170.05	138.91	+	0.96	+ 23.60
66 Washing soap/detergents/match	1.4112	204.77	189.07	148.76	+	8.30	+ 37.65
67 Household servant	0.7695	156.64	155.26	136.10	+	0.89	+ 15.09
<i>Health</i>	2.3098	176.15	174.36	156.84	+	1.03	+ 12.31
68 Drugs and medicines	1.0735	177.38	174.89	156.28	+	1.42	+ 13.50
69 Therapeutic Appliances and Eq	0.0054	123.95	123.38	116.78	+	0.46	+ 6.14
70 Doctor (MBBS) clinic fee	0.4044	226.50	225.85	195.83	+	0.29	+ 15.66
71 Dental services	0.0156	145.05	144.65	128.98	+	0.28	+ 12.46
72 Medical tests	0.2367	154.26	149.69	134.86	+	3.05	+ 14.39
73 Hospitals services	0.5742	148.75	148.56	140.61	+	0.13	+ 5.79
<i>Transport</i>	6.1368	250.71	245.69	153.57	+	2.04	+ 63.25
74 Motor vehicles	0.8097	205.96	211.09	152.69	-	2.43	+ 34.89
75 Motor vehicle accessories	0.1941	193.44	183.85	145.70	+	5.22	+ 32.77
76 Motor fuel	2.9088	321.28	311.34	171.84	+	3.19	+ <u>86.96</u>
77 Mechanical services	0.4290	170.30	166.83	139.13	+	2.08	+ 22.40
78 Motor vehicle tax	0.0482	148.53	148.53	136.37	+	0.00	+ 8.92
79 Transport services	1.7470	182.90	181.33	128.45	+	0.87	+ 42.39
<i>Communication</i>	2.3536	113.68	113.61	112.32	+	0.06	+ 1.21
80 Postal services	0.0190	185.49	184.35	163.41	+	0.62	+ 13.51
81 Communication apparatus	0.4524	132.07	131.76	128.31	+	0.24	+ 2.93
82 Communication Services	1.8822	108.53	108.53	107.97	+	0.00	+ 0.52
<i>Recreation and culture</i>	1.7301	154.54	151.58	127.58	+	1.95	+ 21.13
83 Recreation and culture	0.6478	125.13	124.75	115.18	+	0.30	+ 8.64
84 Text books	0.6655	155.85	154.61	132.99	+	0.80	+ 17.19
85 Newspapers	0.0716	157.93	157.93	151.55	+	0.00	+ 4.21
86 stationery	0.3452	206.50	194.79	135.48	+	6.01	+ <u>52.42</u>
<i>Education</i>	4.8807	163.69	163.68	148.76	+	0.01	+ 10.04
87 Education	4.8807	163.69	163.68	148.76	+	0.01	+ 10.04
<i>Restaurants and hotels</i>	7.4050	187.90	182.80	145.51	+	2.79	+ 29.13
88 Readymade food	5.5235	194.55	187.83	148.51	+	3.58	+ 31.00
89 Marriage Hall Charges	1.7514	171.68	171.31	138.12	+	0.22	+ 24.30
90 Accommodation Services	0.1301	123.76	123.61	117.69	+	0.12	+ 5.16
<i>Misc. goods and services</i>	4.7720	192.34	185.12	156.29	+	3.90	+ 23.07
91 Personal Grooming Services	0.8001	179.15	167.61	140.52	+	6.89	+ 27.49
92 Electrical Appliances for Per	0.0465	140.61	139.54	119.80	+	0.77	+ 17.37
93 Appliances/Articles/Products	2.9807	179.75	174.20	147.20	+	3.19	+ 22.11
94 Personal Effects n.e.c.	0.9447	245.79	236.64	200.13	+	3.87	+ 22.82

Annexure B:CPI (Rural) Index Numbers by Commodity Groups & Commodities (2015-16=100)

Item and Specification	Weight	Index Numbers			% Change in Sep 2022 over			
		Sep 22	Aug 22	Sep 21	Aug 2022	Sep 2021		
General	100.0000	191.38	191.04	151.74	+	0.18	+	26.12
Food and non-alcoholic Bevera	40.8668	211.44	199.18	159.22	+	6.16	+	32.80
01 Wheat	3.4736	235.79	215.01	164.58	+	9.66	+	43.27
02 Wheat Flour	3.4297	197.10	185.08	165.15	+	6.49	+	19.35
03 Wheat Products	0.1068	203.87	194.28	154.46	+	4.94	+	31.99
04 Besan	0.0728	203.07	188.27	132.42	+	7.86	+	53.35
05 Rice	1.5501	260.42	254.96	188.87	+	2.14	+	37.88
06 Bakery and Confectionary	0.3702	209.18	204.03	150.10	+	2.52	+	39.36
07 Nimco	0.0774	209.09	199.31	136.28	+	4.91	+	53.43
08 Meat	1.7146	224.51	221.63	178.86	+	1.30	+	25.52
09 Chicken	1.4641	203.44	183.41	166.21	+	10.92	+	22.40
10 Fish	0.2640	143.49	140.85	124.80	+	1.87	+	14.98
11 Milk fresh	10.3803	177.17	169.62	139.41	+	4.45	+	27.09
12 Milk products	0.9624	167.13	162.68	136.33	+	2.74	+	22.59
13 Milk powder	0.1062	150.60	144.16	131.13	+	4.47	+	14.85
14 Eggs	0.5665	267.65	231.00	192.00	+	15.87	+	39.40
15 Butter	0.3333	183.70	180.99	149.14	+	1.50	+	23.17
16 Mustard oil	0.0136	302.24	299.93	181.11	+	0.77	+	66.88
17 Cooking oil	0.6011	356.64	358.98	219.97	-	0.65	+	62.13
18 Vegetable ghee	2.3764	360.82	366.68	224.48	-	1.60	+	60.74
19 Dry fruits	0.2496	183.82	182.30	155.98	+	0.83	+	17.85
20 Fresh fruits	1.4505	143.70	148.76	118.06	-	3.40	+	21.72
21 Pulse Masoor	0.2076	236.94	244.44	132.43	-	3.07	+	78.92
22 Pulse Moong	0.2510	164.43	143.64	116.02	+	14.47	+	41.73
23 Pulse Mash	0.1465	168.13	160.32	106.74	+	4.87	+	57.51
24 Pulse Gram	0.2751	207.02	198.93	126.56	+	4.07	+	63.57
25 Gram Whole	0.1116	245.01	235.86	135.88	+	3.88	+	80.31
26 Beans	0.0896	230.89	224.43	173.05	+	2.88	+	33.42
27 Potatoes	0.7437	292.53	259.63	221.83	+	12.67	+	31.87
28 Onions	0.8965	198.33	196.66	139.53	+	0.85	+	42.14
29 Tomatoes	0.5069	353.82	205.30	144.72	+	72.34	+	144.4
30 Fresh Vegetables	2.0947	253.85	200.98	150.53	+	26.31	+	68.64
31 Sugar	2.0296	141.03	141.88	174.27	-	0.60	-	19.07
32 Gur	0.1522	156.38	155.14	158.80	+	0.80	-	1.52
33 Honey	0.0296	165.19	164.65	137.87	+	0.33	+	19.82
34 Sweetmeat	0.3967	195.92	191.76	142.59	+	2.17	+	37.40
35 Ice Cream	0.0568	158.72	148.73	142.84	+	6.72	+	11.12
36 Condiments and Spices	1.4919	193.18	181.22	171.66	+	6.60	+	12.54
37 Dessert Preparation	0.0133	169.53	157.35	132.71	+	7.74	+	27.74
38 Tea	1.2566	181.94	169.22	139.88	+	7.52	+	30.07
39 Beverages	0.5537	153.85	151.40	135.13	+	1.62	+	13.85
Alcoholic Beverages, Tobacco	1.2786	178.49	170.28	136.16	+	4.82	+	31.09
40 Cigarettes	1.2364	176.25	168.14	134.80	+	4.82	+	30.75
41 Pan Prepared	0.0422	244.32	232.83	176.12	+	4.93	+	38.72
Clothing and footwear	9.4826	179.11	178.23	154.03	+	0.49	+	16.28
42 Cotton Cloth	2.8381	196.51	196.09	170.16	+	0.21	+	15.49
43 Woolen Cloth	1.0959	171.33	170.82	145.91	+	0.30	+	17.42
44 Readymade Garments	1.1345	172.51	169.07	145.18	+	2.03	+	18.82
45 Woolen Readymade Garments	0.5401	164.85	164.85	143.31	+	0.00	+	15.03
46 Tailoring	1.2999	180.47	179.77	152.38	+	0.39	+	18.43
47 Hosiery	0.4322	229.97	227.19	187.35	+	1.22	+	22.75
48 Dupatta	0.2078	166.90	164.52	145.16	+	1.45	+	14.98
49 Cleaning and Laundering	0.0176	190.42	188.13	144.34	+	1.22	+	31.92
50 Footwear	1.9165	154.53	154.50	137.71	+	0.02	+	12.21
Housing, water, Elec., Gas an	18.4853	156.28	189.36	143.90	-	17.47	+	8.60
51 House Rent	8.6110	148.48	148.48	140.21	+	0.00	+	5.90
52 Construction Input Items	0.6306	187.91	184.00	136.86	+	2.13	+	37.30
53 Construction Wage Rates	0.2526	184.35	181.44	162.02	+	1.60	+	13.78
54 Water Supply	0.0645	222.06	220.09	218.49	+	0.90	+	1.63
55 Garbage Collection	0.0080	169.61	169.61	154.75	+	0.00	+	9.60
56 Electricity Charges	3.4431	101.93	294.00	146.62	-	65.33	-	30.48
57 Liquefied Hydrocarbons	0.9994	281.47	252.66	167.55	+	11.40	+	67.99
58 Solid Fuel	4.4761	178.12	174.17	142.50	+	2.27	+	25.00

Annexure B:CPI (Rural) Index Numbers by Commodity Groups & Commodities (2015-16=100)

Item and Specification	Weight	Index Numbers			% Change in Sep 2022 over			
		Sep 22	Aug 22	Sep 21	Aug 2022	Sep 2021		
<i>Furnishing and household equi</i>	4.1031	184.89	180.63	146.50	+	2.36	+	26.20
59 Furniture and Furnishing	0.5786	183.89	181.03	149.06	+	1.58	+	23.37
60 Household Textiles	0.4382	159.35	159.17	134.08	+	0.11	+	18.85
61 Household Equipments	1.2774	188.98	187.24	154.80	+	0.93	+	22.08
62 Plastic Products	0.0776	197.47	194.08	160.75	+	1.75	+	22.84
63 Major Tools and Equipments	0.0324	165.74	160.91	131.12	+	3.00	+	26.40
64 Washing Soaps, Detergents and	1.6989	188.53	180.82	142.22	+	4.26	+	32.56
<i>Health</i>	3.5141	178.73	172.92	155.10	+	3.36	+	15.24
65 Drugs and Medicines	1.5792	187.05	179.59	155.55	+	4.15	+	20.25
66 Doctor Clinic Fee	0.5128	229.56	216.75	192.18	+	5.91	+	19.45
67 Dental Services	0.0181	159.65	149.06	132.61	+	7.10	+	20.39
68 Medical Tests	0.3967	166.84	164.43	155.15	+	1.47	+	7.53
69 Hospitals Services	1.0073	144.85	143.94	135.90	+	0.63	+	6.59
<i>Transport</i>	5.5580	248.72	242.64	149.28	+	2.51	+	66.61
70 Motor Vehicles	0.7305	160.00	159.83	136.32	+	0.11	+	17.37
71 Motor Vehicles Accessories	0.1572	191.89	186.89	147.03	+	2.68	+	30.51
72 Motor Fuels	2.4932	320.08	311.17	168.03	+	2.86	+	90.49
73 Mechanical Services	0.3645	180.20	177.91	156.82	+	1.29	+	14.91
74 Motor Vehicle Tax	0.0174	150.93	150.93	120.86	+	0.00	+	24.88
75 Transport Services	1.7952	205.55	200.07	127.47	+	2.74	+	61.25
<i>Communication</i>	1.9940	107.32	107.24	105.80	+	0.07	+	1.44
76 Postal Services	0.0070	149.43	149.43	149.43	+	0.00	+	0.00
77 Communication Apparatus	0.3362	129.69	129.24	121.44	+	0.35	+	6.79
78 Communication Services	1.6508	102.58	102.58	102.42	+	0.00	+	0.16
<i>Recreation and culture</i>	1.3764	171.77	168.11	136.71	+	2.18	+	25.65
79 Recreation and Culture	0.4763	176.75	173.10	139.50	+	2.11	+	26.70
80 Text Books	0.5047	151.80	149.01	124.59	+	1.87	+	21.84
81 Newspapers	0.0230	165.72	165.72	165.56	+	0.00	+	0.10
82 Stationery	0.3724	192.84	187.76	147.80	+	2.71	+	30.47
<i>Education</i>	2.1342	153.12	153.12	139.52	+	0.00	+	9.75
83 Education	2.1342	153.12	153.12	139.52	+	0.00	+	9.75
<i>Restaurants and hotels</i>	6.1895	188.21	185.90	146.78	+	1.24	+	28.23
84 Readymade Food	3.8001	210.09	206.50	159.17	+	1.74	+	31.99
85 Marriage Hall Charges	2.2525	156.12	155.83	128.62	+	0.19	+	21.38
86 Accommodation Services	0.1369	108.81	108.81	101.62	+	0.00	+	7.08
<i>Misc. goods and services</i>	5.0174	193.29	186.45	157.69	+	3.67	+	22.58
87 Personal Grooming Services	1.5363	207.00	198.80	163.04	+	4.12	+	26.96
88 Appliances/Articles/Products	2.2746	154.79	152.51	136.55	+	1.49	+	13.36
89 Personal Effects n.e.c.	1.2065	248.42	234.71	190.74	+	5.84	+	30.24

Annexure C: Wholesale Price Indices by Major Groups & Commodities

(2015-16=100)

Item and Specification	Weight	Index Numbers			% Change in Sep 2022 over			
		Sep 22	Aug 22	Sep 21	Aug 2022	Sep 2021		
General	100.0000	243.30	239.87	175.20	+	1.43	+	38.87
Agriculture Forestry & Fisher	25.7674	245.89	222.12	174.92	+	10.70	+	40.57
001 Wheat	0.6297	259.62	220.32	163.75	+	17.84	+	58.55
002 Maize	0.6764	221.73	213.16	160.40	+	4.02	+	38.24
003 Rice	2.4413	224.58	217.56	177.17	+	3.23	+	26.76
004 Sorghum / Jowar	0.0214	236.50	230.73	206.23	+	2.50	+	14.68
005 Millet / Bajra	0.0374	210.88	203.88	249.21	+	3.43	-	15.38
006 Vegetables	1.2441	334.57	282.73	185.93	+	18.34	+	79.94
007 Fresh Fruits	1.5144	176.15	180.52	139.09	-	2.42	+	26.64
008 Dry Fruits	0.2478	166.58	153.37	139.20	+	8.61	+	19.67
009 Cotton Seeds	1.1511	169.69	160.03	140.74	+	6.04	+	20.57
010 Other Oil Seeds	0.0722	296.81	284.86	214.86	+	4.20	+	38.14
011 Edible Roots / Potatoes	0.2540	355.77	277.52	242.87	+	28.20	+	46.49
012 Stimulant & Spice Crops	0.1634	285.68	237.92	301.64	+	20.07	-	5.29
013 Pulses	0.4901	236.91	223.11	134.32	+	6.19	+	76.38
014 Sugar Crops	1.0725	176.74	167.32	139.03	+	5.63	+	27.12
015 Fibre Crops	5.3169	410.05	345.94	255.83	+	18.53	+	60.28
016 Unmanufactured Tobacco	0.0742	281.31	272.57	243.60	+	3.21	+	15.48
017 Poultry	0.5633	191.61	169.00	152.18	+	13.38	+	25.91
018 Raw Milk from Bovine Animals	7.0279	187.78	177.65	143.28	+	5.70	+	31.06
019 Eggs	0.5034	278.06	239.74	204.87	+	15.98	+	35.73
020 Raw Animal Materials / Wool	0.0351	110.31	110.09	107.67	+	0.20	+	2.45
021 Hides, Skins & Fur Skins, Raw	0.4834	45.24	45.16	33.12	+	0.18	+	36.59
022 Fuel Wood in Logs	0.0179	138.29	132.23	127.84	+	4.58	+	8.17
023 Fish Live Fresh or Chilled	1.7295	162.30	161.14	158.04	+	0.72	+	2.70
Ores/Minerals, Elec., Gas & W	12.0069	202.73	250.75	174.24	-	19.15	+	16.35
024 Coal not Agglomerated	0.7508	135.98	135.98	75.79	+	0.00	+	79.42
025 Natural Gas Liquefied	5.7065	212.81	211.39	206.11	+	0.67	+	3.25
026 Salt & Pure Sodium Chloride	0.0584	206.07	206.07	169.28	+	0.00	+	21.73
027 Electrical Energy	5.4912	201.34	307.82	154.63	-	34.59	+	30.21
Food, Beverages, Tobacco, Textil	31.1122	208.20	203.25	169.86	+	2.44	+	22.57
Food Products, Beverages &	20.0718	207.35	201.27	163.60	+	3.02	+	26.74
028 Meat of Animals	3.4559	215.17	214.69	184.19	+	0.22	+	16.82
029 Vegetables & Fruit Juice	0.0058	159.07	144.75	124.92	+	9.89	+	27.34
030 Dried Fruits & Nuts	0.1733	200.20	199.35	177.07	+	0.43	+	13.06
031 Fruit Juices	0.3880	165.24	147.35	131.76	+	12.14	+	25.41
032 Vegetable Oils Refined	1.9242	262.29	263.04	175.49	-	0.29	+	49.46
033 Vegetable Ghee	1.5632	347.60	359.03	218.13	-	3.18	+	59.35
034 Oil Cakes	0.9611	217.97	207.30	161.26	+	5.15	+	35.17
035 Processed Liquid Milk	4.4437	183.29	173.28	143.51	+	5.78	+	27.72
036 Milk & Cream in Solid Form	0.0316	177.22	172.20	136.00	+	2.92	+	30.31
037 Ice Cream	0.0047	169.26	159.08	148.14	+	6.40	+	14.26
038 Dairy Products N.E.C	0.0117	175.58	161.09	139.41	+	8.99	+	25.95
039 Wheat Flour	2.3034	222.39	193.73	164.23	+	14.79	+	35.41
040 Other Cereal Flour	0.0604	210.89	189.36	130.80	+	11.37	+	61.23
041 Sugar Refined	1.7975	142.01	144.63	175.16	-	1.81	-	18.93
042 Chocolate	0.0139	96.27	96.27	89.03	+	0.00	+	8.13
043 Sugar Confectionary	0.0738	202.19	202.19	187.66	+	0.00	+	7.74
044 Coffee & Tea	0.7303	178.98	166.24	131.07	+	7.66	+	36.55
045 Spices	0.1449	207.35	206.10	342.34	+	0.61	-	39.43
046 Other Food Products	0.0336	139.88	123.82	119.35	+	12.97	+	17.20
047 Mineral Water	0.0207	157.21	157.06	125.24	+	0.10	+	25.53
048 Beverages	0.6303	156.17	148.68	131.96	+	5.04	+	18.35
049 Tobacco Products	1.2998	134.10	134.10	104.23	+	0.00	+	28.66
Textiles & Apparels	10.3289	213.21	211.23	185.33	+	0.94	+	15.04
050 Cotton Yarn	5.2491	239.61	239.61	226.30	+	0.00	+	5.88
051 Nylon Yarn	0.1719	95.24	95.24	95.24	+	0.00	+	0.00
052 Blended Yarn	0.1689	148.12	148.12	141.31	+	0.00	+	4.82
053 Woven Fabrics	0.0128	185.47	185.47	161.21	+	0.00	+	15.05
054 Cotton Fabrics	0.6343	200.41	194.39	170.31	+	3.10	+	17.67
055 Other Fabrics	1.1016	175.24	175.24	126.38	+	0.00	+	38.66
056 Silk & Rayon Fabrics	0.7350	252.20	229.46	168.50	+	9.91	+	49.67
057 Towels	0.1235	158.60	158.60	141.44	+	0.00	+	12.13
058 Blankets	0.0029	105.73	105.56	104.95	+	0.16	+	0.74
059 Bed Sheets	0.0913	133.90	133.90	127.88	+	0.00	+	4.71

Annexure C:Wholesale Price Indices by Major Groups & Commodities (2015-16=100)

Item and Specification	Weight	Index Numbers			% Change in Sep 2022 over	
		Sep 22	Aug 22	Sep 21	Aug 2022	Sep 2021
060 Quilts	0.0019	131.51	131.51	121.31	+ 0.00	+ 8.41
061 Woolen Carpets	0.0383	146.63	146.63	137.01	+ 0.00	+ 7.02
062 Synthetic Carpets	0.0566	131.66	131.66	117.09	+ 0.00	+ 12.44
063 Hosiery Products	0.8832	162.49	162.49	139.20	+ 0.00	+ 16.73
064 Readymade Garments	1.0576	195.04	195.04	140.39	+ 0.00	+ 38.93
Leather Products	0.7115	159.57	143.51	122.09	+ 11.19	+ 30.70
065 Leather Without Hair	0.2973	140.15	126.46	112.56	+ 10.83	+ 24.51
066 Other Leather N.E.C	0.2567	148.41	119.76	114.96	+ 23.92	+ 29.10
067 Footwear's	0.1575	214.40	214.40	151.69	+ 0.00	+ 41.34
Other Transportable Goods	22.3979	312.55	313.08	185.27	- 0.17	+ 68.70
068 Timber	0.0165	191.64	189.21	157.07	+ 1.28	+ 22.01
069 Printing Paper	0.4279	184.76	158.26	130.70	+ 16.74	+ 41.36
070 Hard Board	0.1579	146.50	146.50	146.50	+ 0.00	+ 0.00
071 Motor Spirit	1.6268	334.83	326.21	170.87	+ 2.64	+ <u>95.96</u>
072 Diesel Oil	5.4849	372.86	361.39	168.97	+ 3.17	+ <u>120.6</u>
073 Kerosene Oil	0.2151	407.04	392.70	175.58	+ 3.65	+ <u>131.8</u>
074 Furnace Oil	3.2664	581.43	622.96	383.46	- 6.67	+ <u>51.63</u>
075 Mobil Oil	0.7114	195.08	179.94	135.48	+ 8.41	+ 43.99
076 Chemicals	1.7720	271.16	269.24	155.24	+ 0.71	+ <u>74.67</u>
077 Dyeing Material	0.1539	146.16	146.16	146.16	+ 0.00	+ 0.00
078 Fertilizers	2.8657	213.40	210.00	122.94	+ 1.62	+ <u>73.58</u>
079 Pesticides	0.2763	154.16	153.09	146.51	+ 0.70	+ 5.22
080 Insecticides	0.1276	111.49	111.49	111.49	+ 0.00	+ 0.00
081 Paints & Varnishes	0.1916	200.50	189.86	141.16	+ 5.60	+ 42.04
082 Medicines	1.1428	173.81	172.64	152.03	+ 0.68	+ 14.33
083 Soaps & Detergents	0.8168	155.31	149.31	120.02	+ 4.02	+ 29.40
084 Auto Tires	0.2703	184.34	179.14	127.22	+ 2.90	+ 44.90
085 Plastic Products	0.4550	131.71	131.71	119.91	+ 0.00	+ 9.84
086 Glass sheets	0.2089	232.12	230.52	148.44	+ 0.69	+ <u>56.37</u>
087 Other Glass Articles	0.1635	158.06	158.06	151.04	+ 0.00	+ 4.65
088 Ceramics & Sanitary Fixture	0.0244	154.89	154.86	128.29	+ 0.02	+ 20.73
089 Bricks, Blocks & Tiles	0.1566	162.95	162.77	136.54	+ 0.11	+ 19.34
090 Cement	1.8145	197.89	199.11	134.17	- 0.61	+ 47.49
091 Bed Foam	0.0006	261.96	261.71	158.20	+ 0.10	+ <u>65.59</u>
092 Matches	0.0505	1423.9	1415.5	1195.3	+ 0.59	+ 19.12
Metal Product, Machinery & Eq	8.7156	238.86	219.95	170.50	+ 8.60	+ 40.09
093 Steel Bar & Sheets	1.4615	291.10	296.51	239.41	- 1.82	+ 21.59
094 Pipe Fittings	0.0780	278.60	278.12	176.06	+ 0.17	+ <u>58.24</u>
095 Steel Products	0.3879	141.56	141.48	134.30	+ 0.06	+ 5.41
096 Engines & Motors	0.0046	117.67	117.67	107.29	+ 0.00	+ 9.67
097 Vacuum Pumps	0.0155	107.56	107.56	107.56	+ 0.00	+ 0.00
098 Air Conditioners	0.0049	188.78	187.66	129.14	+ 0.60	+ 46.18
099 Cultivators	0.0551	174.49	174.49	103.75	+ 0.00	+ <u>68.18</u>
100 Chuff Cutter	0.1293	337.83	337.83	128.57	+ 0.00	+ <u>162.7</u>
101 Tractors	0.0028	206.24	206.24	135.63	+ 0.00	+ <u>52.06</u>
102 Lathe Machines	0.0525	364.02	364.02	242.71	+ 0.00	+ 49.98
103 Concrete Mixture	0.0107	239.71	239.71	100.00	+ 0.00	+ <u>139.7</u>
104 Fridge,WashM,SewM,Fans,Iron	1.1645	183.08	182.46	163.04	+ 0.34	+ 12.29
105 Electric Wires	0.0912	185.66	185.66	148.23	+ 0.00	+ 25.25
106 Lighting Equipments	1.4431	272.44	189.30	131.75	+ 43.92	+ <u>106.7</u>
107 Radio & Television	0.1843	122.49	122.49	108.07	+ 0.00	+ 13.34
108 Motor Vehicles	0.0244	205.44	205.44	156.48	+ 0.00	+ 31.29
109 Motorcycles	0.2570	193.71	192.11	140.01	+ 0.83	+ 38.35
110 Bicycles	3.3483	239.03	223.66	172.55	+ 6.87	+ 38.53