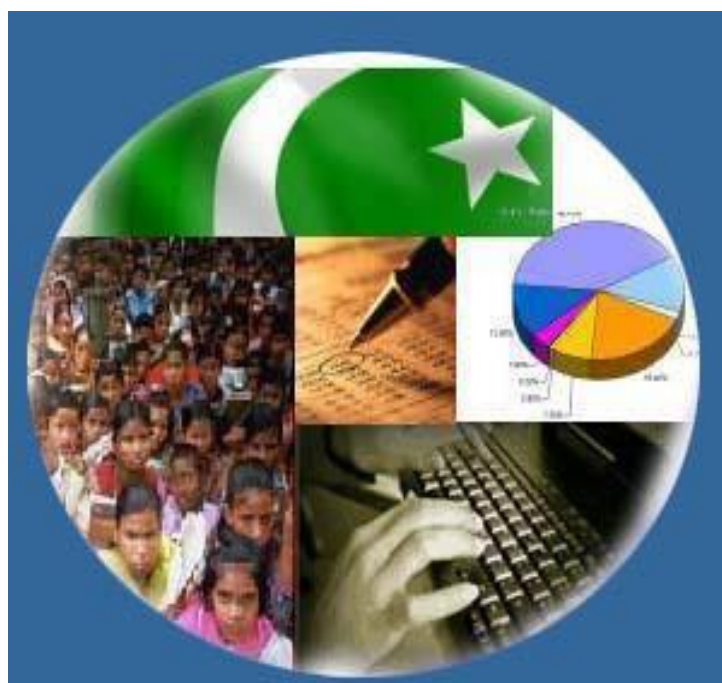




Monthly Review on Price Indices



November, 2022
(Base Year 2015-16)

Government of Pakistan
Ministry of Planning, Development & Special Initiatives
Pakistan Bureau of Statistics
Islamabad

PRICE STATISTICS TEAM

S#	Name	Designation
1.	Dr. Naeem Uz Zafar	Chief Statistician
2.	Syed Ejaz Wasti	Member (National Accounts/Prices)
3.	Dr. Bahrawar Jan	Deputy Director General
4.	Mr. Naseer Ahmad	Director
5.	Dr. Ahtasham Gul	Chief Statistical Officer
6.	Mr. Tauseef ul Hai Khan	Assistant Census Commissioner
7.	Mr. Adnan Shams	Statistical Officer
8.	Mr. Muhammad Mazhar	Statistical Officer
9.	Mr. Shahzad	Statistical Officer
10.	Mr. Umer Farooq	Statistical Assistant
11.	Mr. Ansar Mahmood	Statistical Assistant
12.	Mrs. Madiha Gulfraz	Statistical Assistant
13.	Mrs. Humail Fatima	Statistical Assistant

IT & SOFTWARE TEAM

1.	Mrs. Sobia Munawar	Director (DP)
2.	Mr. Muhammad Ehtesham	Director (DP)
3.	Mr. Arsalan Bashir	Data Processing Officer
4.	Mr. Muhammad Kibria	Data Processing Officer
5.	Mr. Muhammad Irfan Bajwa	Data Processing Assistant

Inflation in Brief

- CPI inflation General**, increased to 23.8% on year-on-year basis in Nov 2022 as compared to an increase of 26.6% in the previous month and 11.5% in Nov 2021. On month-on-month basis, it increased to 0.8% in Nov 2022 as compared to an increase of 4.7% in the previous month and an increase of 3.0% in Nov 2021.
- CPI inflation Urban**, increased to 21.6% on year-on-year basis in Nov 2022 as compared to an increase of 24.6% in the previous month and 12.0% in Nov 2021. On month-on-month basis, it increased to 0.4% in Nov 2022 as compared to an increase of 4.5% in the previous month and an increase of 2.9% in Nov 2021.
- CPI inflation Rural**, increased to 27.2% on year-on-year basis in Nov 2022 as compared to an increase of 29.5% in the previous month and 10.9% in Nov 2021. On month-on-month basis, it increased to 1.3% in Nov 2022 as compared to an increase of 5.0% in the previous month and an increase of 3.1% in Nov 2021.
- SPI inflation** on YoY increased to 27.1% in Nov 2022 as compared to an increase of 24.0% a month earlier and an increase of 18.1% in Nov 2021. On MoM basis, it increased by 6.1% in Nov 2022 as compared to a decrease of 1.5% a month earlier and an increase of 3.6% in Nov 2021.
- WPI inflation** on YoY basis increased to 27.7% in Nov 2022 as compared to an increase of 32.6% a month earlier and an increase of 27.0% in Nov 2021. On MoM basis, it decreased by 0.02% in Nov 2022 as compared to a decrease of 0.5% a month earlier and an increase of 3.8% in corresponding month i.e. Nov 2021.
- Figures 1 and 2 show graphically the yearly data of Table 1.a for Urban and Rural CPI while Table 1.1 shows "Period Average" and "YoY" percent changes in indices of three years.

Table 1.a General Inflation (%) (Base 2015-16)																		
PERIOD	CPI														SPI**		WPI	
	General						Food				Non-Food							
	National		Urban		Rural		Urban		Rural		Urban		Rural		YoY	MoM	YoY	MoM
	YoY	MoM	YoY	MoM	YoY	MoM	YoY	MoM	YoY	MoM	YoY	MoM	YoY	MoM				
Feb-21	8.7	1.8	8.6	2.3	8.8	1.1	10.3	1.3	9.1	0.2	7.6	2.8	8.6	2.0	11.9	3.1	9.5	2.2
Mar-21	9.1	0.4	8.7	0.3	9.5	0.5	11.5	1.7	11.1	1.5	7.1	-0.6	8.1	-0.4	18.7	5.7	14.6	3.7
Apr-21	11.1	1.0	11.0	1.3	11.3	0.6	15.7	2.7	14.1	0.9	8.2	0.5	8.9	0.3	21.3	0.4	16.6	-0.4
May-21	10.9	0.1	10.8	0.2	10.9	-0.03	15.3	1.1	12.8	0.2	8.3	-0.3	9.2	-0.3	19.7	0.8	19.4	0.3
Jun-21	9.7	-0.3	9.6	-0.4	9.7	-0.1	11.0	-1.9	9.8	-0.8	8.8	0.5	9.7	0.6	17.6	-0.4	20.9	0.9
Jul-21	8.4	1.3	8.7	1.3	8.0	1.4	9.4	1.5	7.3	1.6	8.2	1.1	8.7	1.2	16.2	1.8	17.3	2.3
Aug-21	8.4	0.6	8.3	0.5	8.4	0.7	10.2	0.5	9.1	0.8	7.2	0.5	7.7	0.6	15.9	0.7	17.1	1.2
Sep-21	9.0	2.1	9.1	2.0	8.8	2.3	10.8	3.6	9.1	3.7	8.1	1.1	8.5	1.0	16.6	2.7	19.6	3.2
Oct-21	9.2	1.9	9.6	1.7	8.7	2.2	9.4	1.5	7.2	2.6	9.7	1.8	10.0	1.9	15.2	2.1	21.2	4.2
Nov-21	11.5	3.0	12.0	2.9	10.9	3.1	11.9	3.9	8.6	3.3	12.0	2.2	13.0	3.0	18.1	3.6	27.0	3.8
Dec-21	12.3	-0.02	12.7	0.3	11.6	-0.5	11.7	-2.3	9.0	-3.1	13.4	2.0	14.0	1.9	20.9	-0.4	26.2	-0.2
Jan-22	13.0	0.4	13.0	0.1	12.9	0.9	13.3	-0.8	11.8	0.4	12.8	0.6	13.9	1.4	20.9	-0.8	24.0	0.6
Feb-22	12.2	1.2	11.5	0.9	13.3	1.5	14.3	2.2	14.6	2.6	9.9	0.2	12.2	0.4	18.7	1.3	23.6	1.9
Mar-22	12.7	0.8	11.9	0.7	13.9	1.0	14.5	1.8	15.5	2.3	10.4	-0.1	12.5	-0.2	13.0	0.6	23.8	3.9
Apr-22	13.4	1.6	12.2	1.6	15.1	1.6	15.6	3.7	17.7	2.8	10.2	0.3	12.8	0.5	14.2	1.5	28.1	3.2
May-22	13.8	0.4	12.4	0.3	15.9	0.6	15.5	1.0	19.0	1.3	10.4	-0.1	13.1	0.0	14.1	0.6	29.6	1.4
Jun-22	21.3	6.3	19.8	6.2	23.6	6.6	24.0	5.3	27.0	6.0	17.3	6.8	20.4	7.1	21.7	6.2	38.9	8.2
Jul-22	24.9	4.3	23.6	4.5	26.9	4.2	27.4	4.3	29.6	3.7	21.3	4.6	24.5	4.6	28.2	7.3	38.5	2.0
Aug-22	27.3	2.4	26.2	2.6	28.8	2.2	28.8	1.6	30.2	1.2	24.7	3.3	27.5	3.1	34.0	5.2	41.2	3.1
Sep-22	23.2	-1.2	21.2	-2.1	26.1	0.2	30.8	5.2	32.7	5.7	15.2	-6.6	20.1	-4.9	28.6	-1.4	38.9	1.4
Oct-22	26.6	4.7	24.6	4.5	29.5	5.0	34.7	4.6	37.2	6.1	18.2	4.5	22.4	3.9	24.0	-1.5	32.6	-0.5
Nov-22	23.8	0.8	21.6	0.4	27.2	1.3	29.7	0.0	33.5	0.5	16.4	0.6	21.4	2.1	27.1	6.1	27.7	0.0

** SPI for quintile 1. Digits 0.0* are due to rounding off.

Core inflation (NFNE)

7. Measured by **non-food non-energy Urban** increased to 14.6% on (YoY) basis in Nov 2022 as compared to an increase of 14.9% in the previous month and 7.6% in Nov, 2021. On (MoM) basis, it increased by 0.8% in Nov, 2022 as compared to an increase of 1.3% in previous month, and an increase of 1.1% in corresponding month of last year i.e. Nov, 2021.
8. Measured by **non-food non-energy Rural** increased to 18.5% on (YoY) basis in Nov, 2022 as compared to an increase of 18.2% in the previous month and 8.2% in Nov, 2021. On (MoM) basis, it increased by 2.1% in Nov, 2022 as compared to an increase of 1.5% in previous month, and an increase of 1.8% in corresponding month of last year i.e. Nov, 2021.

Core inflation (Trimmed)

9. Measured by 20% **weighted trimmed mean Urban** increased to 19.8% on (YoY) basis in Nov, 2022 as compared to 22.0% in the previous month and 9.8% in Nov, 2021. On (MoM) basis, it increased by 0.5% in Nov, 2022 as compared to an increase of 1.9% in the previous month and an increase of 1.7% in corresponding month of last year i.e. Nov, 2021.
10. Measured by 20% **weighted trimmed mean Rural** increased to 25.4% on (YoY) basis in Nov, 2022 as compared to 26.7% in the previous month and by 9.5% in Nov, 2021. On (MoM) basis, it increased to 1.8% in Nov, 2022 as compared to an increase of 2.7% in the previous month and an increase of 2.2% in corresponding month of last year i.e. Nov, 2021.

Table 1.b Core Inflation (%) (Base 2015-16)

Period	NFNE				Trimmed			
	Urban		Rural		Urban		Rural	
	YoY	MoM	YoY	MoM	YoY	MoM	YoY	MoM
Nov-21	7.6	1.1	8.2	1.8	9.8	1.7	9.5	2.2
Dec-21	8.3	1.1	8.9	1.1	10.8	1.1	10.3	1.0
Jan-22	8.2	0.8	9.0	1.2	10.6	0.5	10.9	1.1
Feb-22	7.8	0.8	9.4	0.9	9.8	0.8	11.3	1.2
Mar-22	8.9	1.2	10.3	1.1	10.5	0.8	11.7	0.8
Apr-22	9.1	1.1	10.9	1.2	10.5	0.9	12.8	0.9
May-22	9.7	0.7	11.5	0.9	10.7	0.8	14.1	1.4
Jun-22	11.5	2.0	13.6	2.3	16.7	3.5	19.1	4.3
Jul-22	12.0	1.2	14.6	1.6	19.1	2.7	21.7	2.7
Aug-22	13.8	1.8	16.5	1.8	21.4	1.7	23.8	1.8
Sep-22	14.4	0.9	17.6	1.4	19.5	1.6	24.4	2.5
Oct-22	14.9	1.3	18.2	1.5	22.0	1.9	26.7	2.7
Nov-22	14.6	0.8	18.5	2.1	19.8	0.5	25.4	1.8

Table 1.1 Period Average and Y-o-Y % Change

INDEX	Average July - November % changes			November over November % changes		
	2022-2023	2021-2022	2020-2021	2022-2023	2021-2022	2020-2021
CPI (National)	25.14	9.32	8.76	23.84	11.53	8.35
CPI (Urban)	23.41	9.55	7.38	21.56	11.99	6.95
CPI (Rural)	27.72	8.96	10.86	27.21	10.87	10.46
SPI	28.30	16.42	11.97	27.05	18.09	9.90
WPI	35.59	20.49	4.18	27.73	26.97	5.00

Figure 1: Urban Inflation - YoY, Special Indices

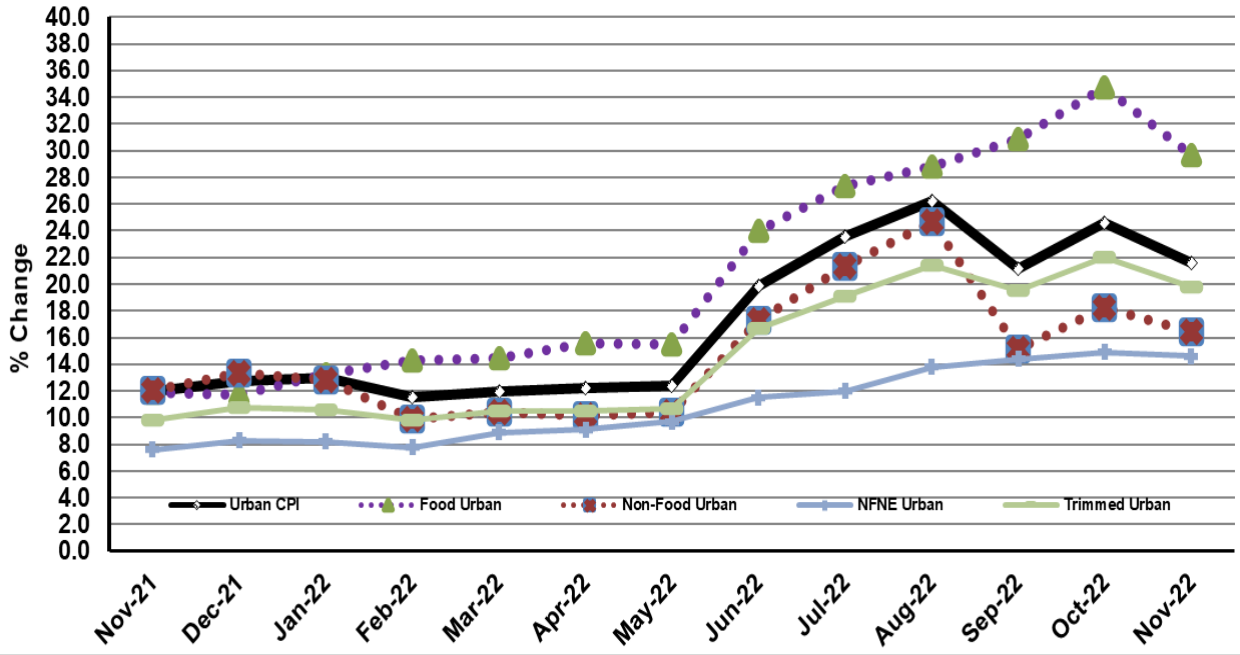


Figure 2: Rural Inflation - YoY, Special Indices

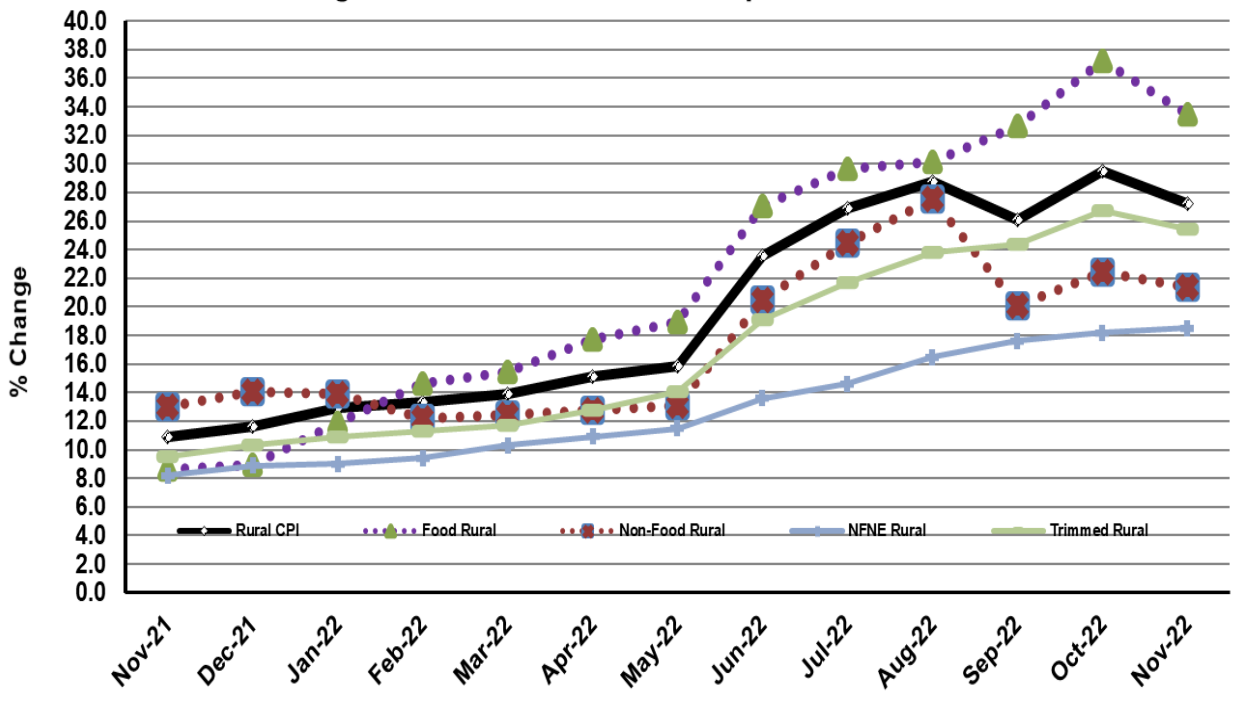


Figure 3: Urban Inflation - MoM, Special Indices

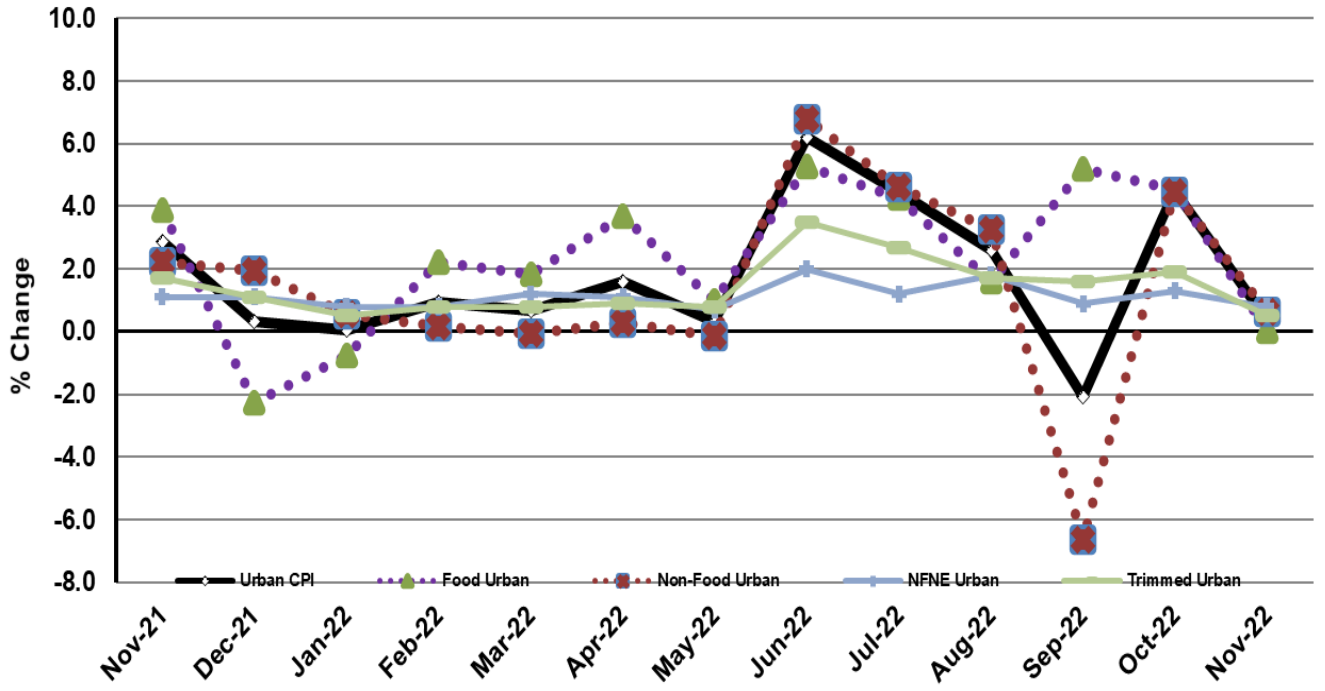


Figure 4: Rural Inflation - MoM, Special Indices

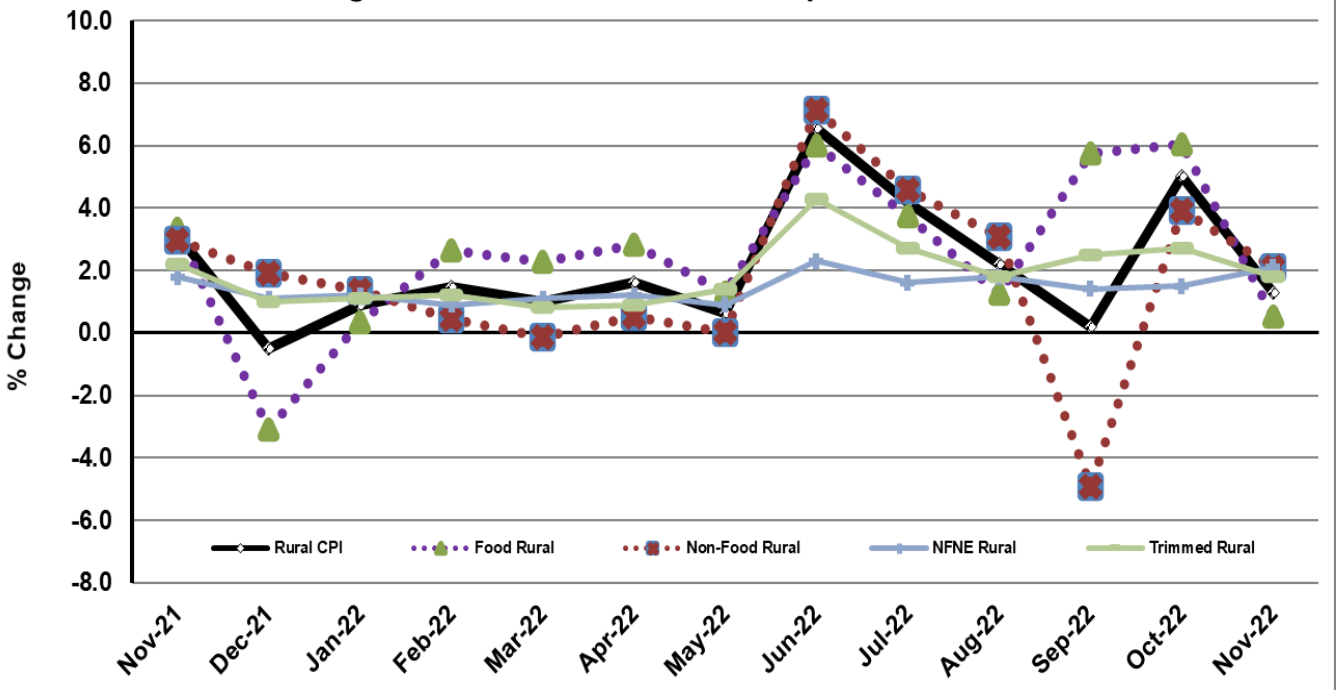


Figure 5: CPI YoY (National, Urban, Rural)

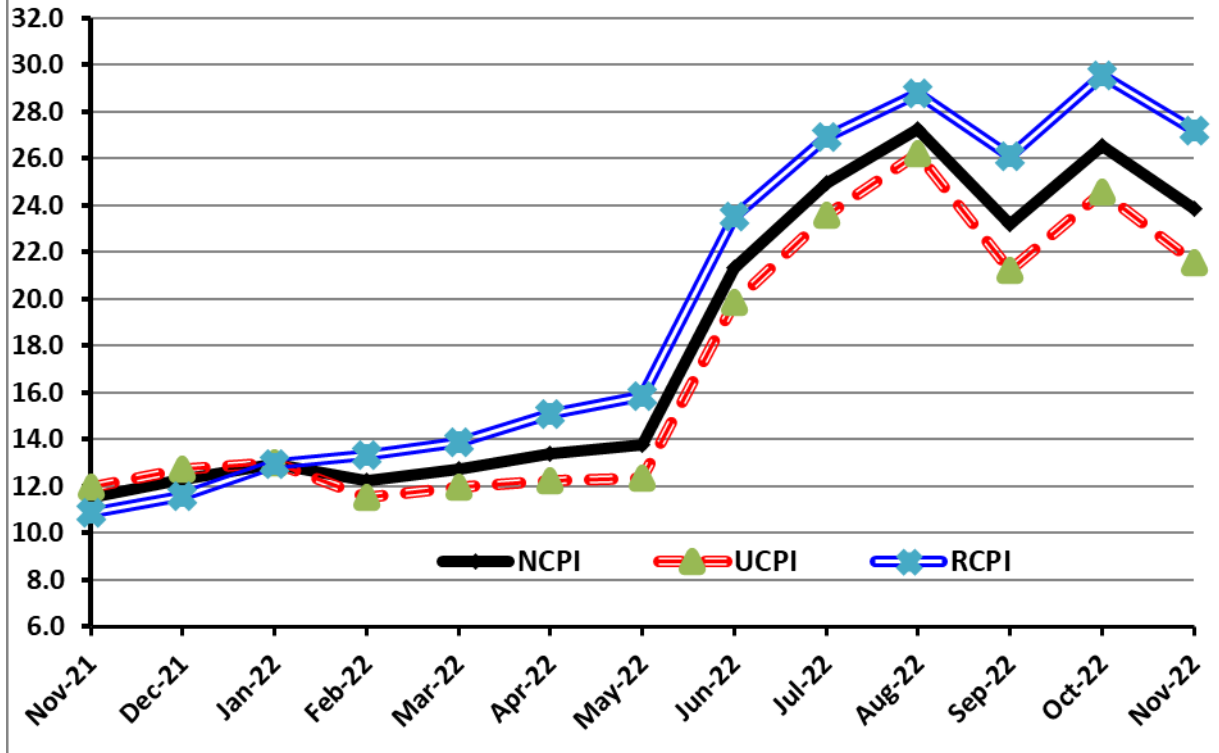
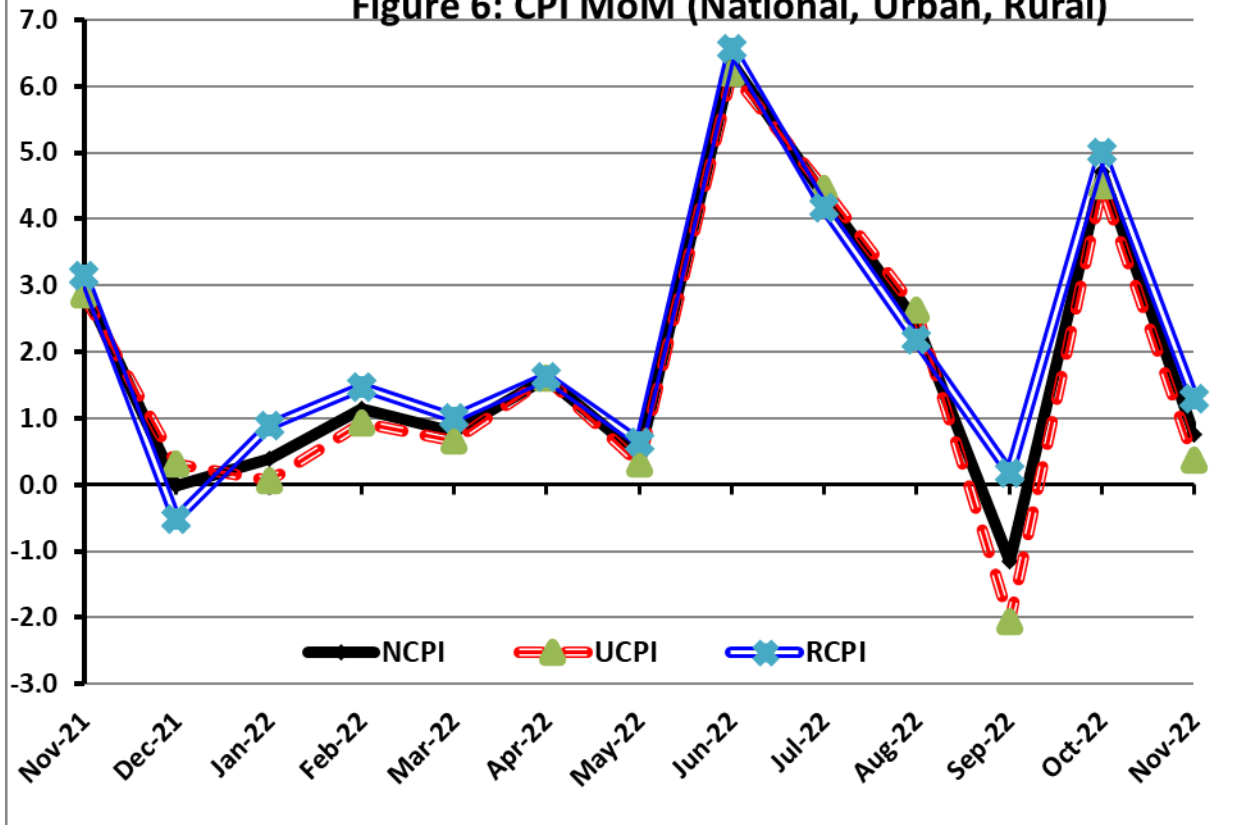


Figure 6: CPI MoM (National, Urban, Rural)



I. National Consumer Price Index (N-CPI)

The **National Consumer Price Index** for **November 2022** is **increased** to 0.76% over **October 2022** and increased to 23.84% over corresponding month of the last year i.e. **November 2021**.

Table 1: Consumer Price Index (National) by Group of Commodities and Services (Base 2015-16)									
No	Group	Group Weight (%)	Indices			% Change Nov 2022 Over		Impact (In % points) Nov 2022 Over	
			Nov22	Oct 22	Nov 21	Oct 22	Nov 21	Oct 22	Nov 21
	General	100.00	195.89	194.42	158.18	0.76	23.84	0.76	23.84
1.	Food & Non-alcoholic Bev.	34.58	221.14	220.99	168.61	0.07	31.16	0.03	11.49
	<i>Non-perishable Food Items</i>	29.60	214.82	212.37	166.12	1.15	29.32	0.37	9.11
	<i>Perishable Food Items</i>	4.99	258.67	272.14	183.38	-4.95	41.06	-0.35	2.37
2.	Alcoholic Bev. & Tobacco	1.02	198.46	196.21	146.04	1.14	35.90	0.01	0.34
3.	Clothing & Footwear	8.60	182.32	178.48	153.75	2.15	18.58	0.17	1.55
4.	Housing, Water, Electricity, Gas & Fuels	23.63	167.48	166.56	152.40	0.55	9.89	0.11	2.25
5.	Furnishing & Household Equipment Maintenance	4.10	191.84	186.56	148.59	2.83	29.10	0.11	1.12
6.	Health	2.79	186.02	182.47	158.85	1.94	17.10	0.05	0.48
7.	Transport	5.91	245.27	245.44	170.07	-0.07	44.22	-0.01	2.81
8.	Communication	2.21	111.89	111.84	110.10	0.05	1.63	0.00	0.03
9.	Recreation & Culture	1.59	166.80	163.60	132.85	1.95	25.55	0.03	0.34
10.	Education	3.79	163.45	162.87	147.16	0.36	11.07	0.01	0.39
11.	Restaurants & Hotels	6.92	196.51	192.77	153.08	1.94	28.37	0.13	1.90
12.	Miscellaneous	4.87	199.01	194.49	161.83	2.32	22.97	0.11	1.14

II. Urban Consumer Price Index (UCPI)

The Urban Consumer Price Index for **November 2022** is increased to 0.38% over **October 2022** and increased to 21.56% over corresponding month of the last year i.e. **November 2021**.

Table 2: Consumer Price Index (Urban) by Group of Commodities and Services (Base 2015-16)

No	Group	Group Weight (%)	Indices			% Change Nov 2022 Over		Impact (In % points) Nov 2022 Over	
			Nov 22	Oct 22	Nov 21	Oct 22	Nov 21	Oct 22	Nov 21
	General	100.00	190.80	190.08	156.96	0.38	21.56	0.38	21.56
1.	Food & Non-alcoholic Bev.	30.42	216.54	217.09	167.96	-0.25	28.92	-0.09	9.42
	<i>Non-perishable Food Items</i>	25.97	210.53	209.17	165.64	0.65	27.10	0.19	7.43
	<i>Perishable Food Items</i>	4.46	251.57	263.27	181.47	-4.44	38.63	-0.27	1.99
2.	Alcoholic Bev. & Tobacco	0.85	212.67	209.33	155.04	1.60	37.17	0.02	0.31
3.	Clothing & Footwear	8.01	178.94	176.60	149.65	1.33	19.57	0.10	1.49
4.	Housing, Water, Electricity, Gas & Fuels	27.03	163.42	163.50	152.28	-0.05	7.32	-0.01	1.92
5.	Furnishing & Household Equip. & Maintenance	4.09	189.70	184.97	147.02	2.56	29.03	0.10	1.11
6.	Health	2.31	182.00	179.22	159.57	1.55	14.06	0.03	0.33
7.	Transport	6.14	245.03	245.33	172.43	-0.12	42.10	-0.01	2.84
8.	Communication	2.35	114.40	114.37	112.42	0.03	1.76	0.00	0.03
9.	Recreation & Culture	1.73	158.91	157.14	129.92	1.13	22.31	0.02	0.32
10.	Education	4.88	165.87	165.49	149.34	0.23	11.07	0.01	0.51
11.	Restaurants & Hotels	7.41	196.97	193.58	152.10	1.75	29.50	0.13	2.12
12.	Miscellaneous	4.77	198.51	195.11	160.41	1.74	23.75	0.09	1.16

Main contributors to month-on-month and year-on-year percentage changes are given below and detail is given in **Annexure-A**.

1. MONTH-ON-MONTH Top few commodities which varied from previous month are given below:

FOOD

Increased: Onions (34.42%), Tea (14.79%), Potatoes (14.57%), Dry Fruits (12.79%), Fish (7.01%), Pan Prepared (6.48%), Eggs (5.34%), Butter (4.96%), Sugar (3.67%), Milk Powder (2.97%), Wheat Products (2.15%), Bakery and Confectionery (2.11%), Readymade Food (1.4%) and Sweetmeat (1.36%).

Decreased: Fresh vegetables (26.42%), Pulse masoor (11.17%), Tomatoes (9.56%), Pulse Gram (5.51%), Chicken (5.08%), Pulse Mash (4.26%), Besan (3.5%), Pulse Moong (3.05%) and Gram Whole (2.01%).

NON-FOOD

Increased: Woolen Readymade Garments (12.71%), Solid Fuel (5.87%), Household Textiles (5.53%), Personal Effects n.e.c. (4.03%) and Washing Soap/ Detergents/ Match Box (3.63%),

Decreased: Liquefied Hydrocarbons (3.06%), Transport Services (1.54%), Electricity Charges (0.34%) and Motor Fuel (0.01%).

YEAR-ON-YEAR: Top few commodities which varied from corresponding month of previous year i.e. Oct, 2021 are given below:

FOOD

Increased: Onions (284.87%), Gram Whole (63.49%), Tea (62.18%), Pulse Gram (56.19%), Besan (56.1%), Butter (53.05%), Pulse Mash (47.76%), Pulse Moong (46.29%), Mustard Oil (44.69%), Wheat (43.4%), Cooking Oil (41.88%), Dessert Preparation (40.1%), Rice (39.75%), Pulse Masoor (38.73%).

Decreased: Sugar (9.9%), Condiments and Spices (9.78%) and Gur (3.64%).

NON-FOOD

Increased: Motor Fuel (52.02%), Stationery (44.57%), Washing Soap/Detergents/Match Box (43.42%), Transport Services (33.43%), Motor Vehicle Accessories (31.48%) and Construction Input Items (30.02%),

Decreased: Liquefied Hydrocarbons (0.03%).

III. Rural Consumer Price Index (RCPI)

The Rural Consumer Price Index for November 2022 is increased to 1.30% over October 2022 and increased to 27.21% over corresponding month of the last year i.e. November 2021.

Table 3: Consumer Price Index (Rural) by Group of Commodities and Services (Base 2015-16)

No	Group	Group Weight (%)	Indices			% Change Nov 2022 Over		Impact (In % points) Nov 2022 Over	
			Nov 22	Oct 22	Nov 21	Oct 22	Nov 21	Oct 22	Nov 21
	General	100.00	203.57	200.96	160.03	1.30	27.21	1.30	27.21
1.	Food & Non-alcoholic Bev.	40.87	226.31	225.37	169.33	0.42	33.65	0.19	14.55
	<i>Non-perishable Food Items</i>	<i>35.08</i>	<i>219.61</i>	<i>215.95</i>	<i>166.65</i>	<i>1.69</i>	<i>31.78</i>	<i>0.64</i>	<i>11.61</i>
	<i>Perishable Food Items</i>	<i>5.79</i>	<i>266.91</i>	<i>282.45</i>	<i>185.59</i>	<i>-5.50</i>	<i>43.82</i>	<i>-0.45</i>	<i>2.94</i>
2.	Alcoholic Bev. & Tobacco	1.28	184.13	182.99	136.96	0.62	34.44	0.01	0.38
3.	Clothing & Footwear	9.48	186.63	180.87	158.97	3.18	17.40	0.27	1.64
4.	Housing, Water, Electricity, Gas & Fuels	18.49	176.43	173.31	152.66	1.80	15.57	0.29	2.75
5.	Furnishing & Household Equip. & Maintenance	4.10	195.05	188.95	150.96	3.23	29.21	0.12	1.13
6.	Health	3.51	190.01	185.70	158.14	2.32	20.15	0.08	0.70
7.	Transport	5.56	245.68	245.62	166.14	0.02	47.88	0.00	2.76
8.	Communication	1.99	107.43	107.33	105.96	0.09	1.39	0.00	0.02
9.	Recreation & Culture	1.38	181.76	175.86	138.41	3.35	31.32	0.04	0.37
10.	Education	2.13	155.10	153.81	139.62	0.84	11.09	0.01	0.21
11.	Restaurants & Hotels	6.19	195.67	191.32	154.84	2.27	26.37	0.13	1.58
12.	Miscellaneous	5.02	199.72	193.59	163.87	3.17	21.88	0.15	1.12

Main contributors to Month-on-Month and Year-on-Year percentage changes are given below and detail is given in **Annexure-B**.

1. MONTH-ON-MONTH Top few commodities which varied from previous month are given below:

FOOD

Increased: Onions (29.22%), Dry Fruits (16.61%), Tea (10.42%), Potatoes (5.72%), Condiments and Spices (5.68%), Milk Products (5.04%), Milk Fresh (4.16%), Sugar (3.75%), Wheat Products (3.57%), Fish (3.52%), Nimco (3.35%), Butter (3.19%), Milk Powder (2.81%), Eggs (2.8%), Pan Prepared (2.56%), Sweetmeat (2.15%) and Fresh Fruits (2.14%).

Decreased: Fresh Vegetables (26.88%), Pulse Masoor (12.33%), Tomatoes (9.57%), Pulse Mash (4.75%), Pulse Gram (3.16%), Chicken (2.7%), Gur (2.53%) and Gram Whole (2.33%).

NON-FOOD

Increased: Woolen Readymade Garments (10.26%), Solid Fuel (7.61%), Household Textiles (7.36%), Footware (6.26%), Stationery (6.02%), Personal Effects n.e.c.(5.1%), Major Tools and Equipments (4.62%), Recreation and Culture (4.38%), Woolen Cloth (4.19%), Hosiery (4.01%), Drugs and Medicines (3.82%), Washing Soaps, Detergents and Match Box (3.79%).

Decreased: Liquified Hydrocarbons (2.25%), Transport Services (0.99%), Electricity Charges (0.34%) and Motor Fuels (0.03%).

YEAR-ON-YEAR: Top few commodities which varied from corresponding month of previous year i.e. Oct 2021 are given below:

FOOD

Increased: Onions (286.55%), Gram Whole (71.67%), Pulse Gram (62.58%), Besan (59.74%), Nimco (58.54%), Tea (54.07%), Pulse Mash (50.78%), Pulse Masoor (49.4%), Wheat (47.16%), Pulse Moong (46.87%), Mustard Oil (46.86%), Cooking Oil (42.39%), Vegetable Ghee (42.38%).

Decreased: Sugar (14.06%) and Gur (3.96%).

NON-FOOD

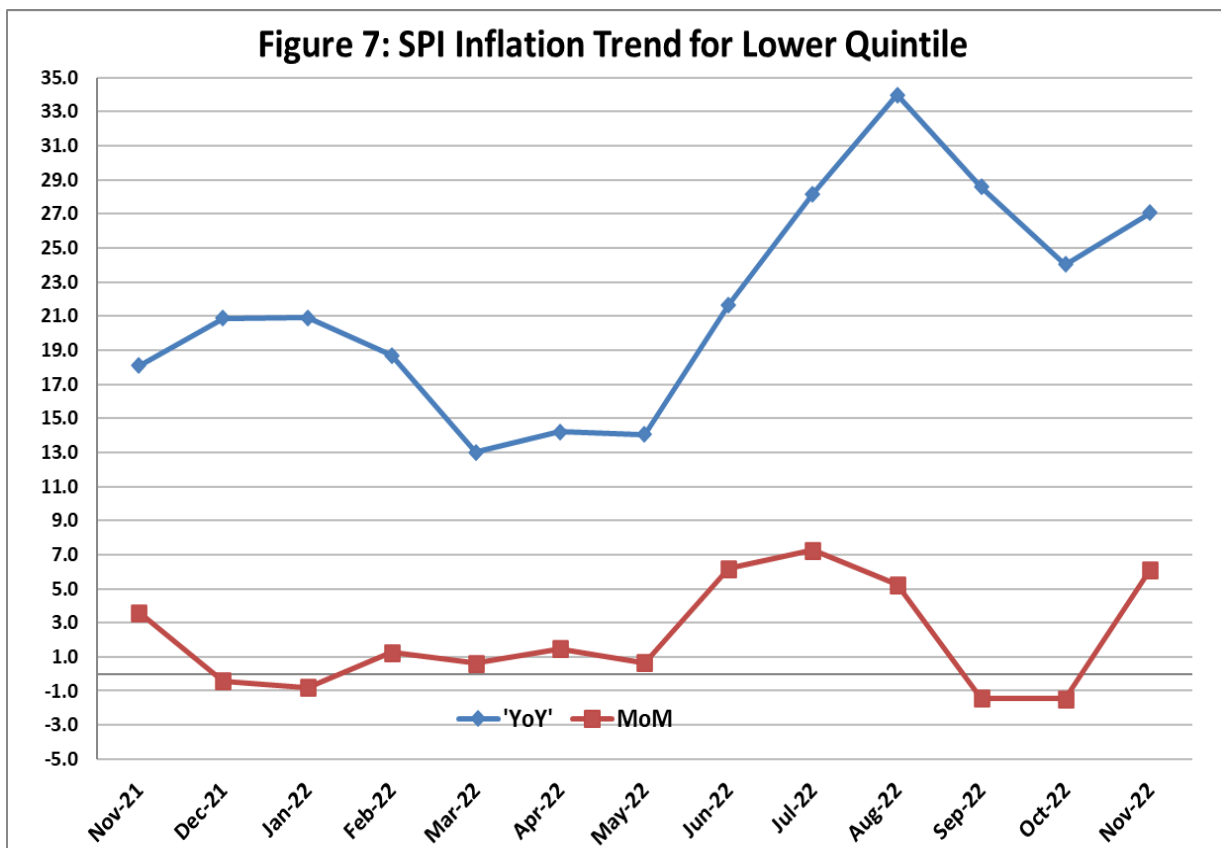
Increased: Transport Services (59.86%), Motor Fuels (53.7%), Stationery (38.85%), Washing Soaps, Detergents and Match Box (38.12%), Construction Input Items (34.65%), Solid Fuel (32.71%), Recreation and Culture (32.24%), Motor Vehicles Accessories (30.82%) and Drugs and Medicines (30.24%).

IV. Sensitive Price Indicator

Quintile-wise percentage changes YoY and MoM are given below in Table 4. The series from November 2021 to November 2022 is also graphed below in Figure 7.

Table 4: Sensitive Price Indicator (Base 2015-16)					
Quintiles	Indices			% Change Nov 2022 Over	
	Nov 22	Oct 22	Nov 21	Oct 22	Nov 21
1	225.61	212.62	177.57	6.11	27.05
2	215.25	197.73	167.76	8.86	28.31
3	218.61	206.76	168.46	5.73	29.77
4	214.85	205.51	164.42	4.54	30.67
5	219.25	215.07	168.32	1.94	30.26
Combined	216.92	206.74	167.30	4.92	29.66

Table 4.1 : Weekly Percentage Change of SPI During Nov - 2022				
Quintiles	% Change with Previous week			
	03-11-2022	10-11-2022	17-11-2022	24-11-2022
Quintile 1	0.9	1.11	0.96	0.46
Combined	0.53	0.74	0.62	0.48



V. Wholesale Price Index

The Wholesale Price Index for November, 2022 decreased by 0.02% over October, 2022. It increased to 27.73% over the corresponding month of the last year i.e. Nov, 2021. YoY and MoM movements, from November, 2021 to November, 2022 are also graphed below in Figure 8.

Table 5: Wholesale Price Index by Group of Commodities (Base 2015-16)

No	Group	Group Weight (%)	Indices			% Change Nov 2022 Over		Impact (In % points) Nov 2022 Over	
			Nov 22	Oct 22	Nov 21	Oct 22	Nov 21	Oct 22	Nov 21
	General	100.00	242.09	242.15	189.54	-0.02	27.73	-0.02	27.73
1	Agriculture Forestry & Fishery	25.77	225.99	234.75	188.90	-3.73	19.63	-0.93	5.04
2	Ores/Minerals, Elec., Gas & Water	12.01	219.41	220.43	187.34	-0.46	17.12	-0.05	2.03
3	Food, Beverages, Tobacco, Textiles & Leather Products	31.11	212.87	211.88	176.04	0.47	20.92	0.13	6.05
	i. Food Products, Beverages & Tobacco	20.07	214.19	212.85	168.70	0.63	26.97	0.11	4.82
	ii. Textiles & Apparels	10.33	213.98	213.61	193.73	0.17	10.45	0.02	1.10
	iii. Leather Products	0.71	159.57	159.57	126.23	0.00	26.41	0.00	0.13
4	Other Transportable Goods	22.40	292.07	305.46	215.30	-4.38	35.66	-1.24	9.07
5	Metal Product, Machinery & Equipment	8.72	296.80	239.26	176.48	24.05	68.18	2.07	5.53

Main contributors to month-on-month and year-on-year percentage changes are given below and detail is given in **Annexure-C**.

1. MONTH-ON-MONTH: Top few commodities which varied from previous month are given below:

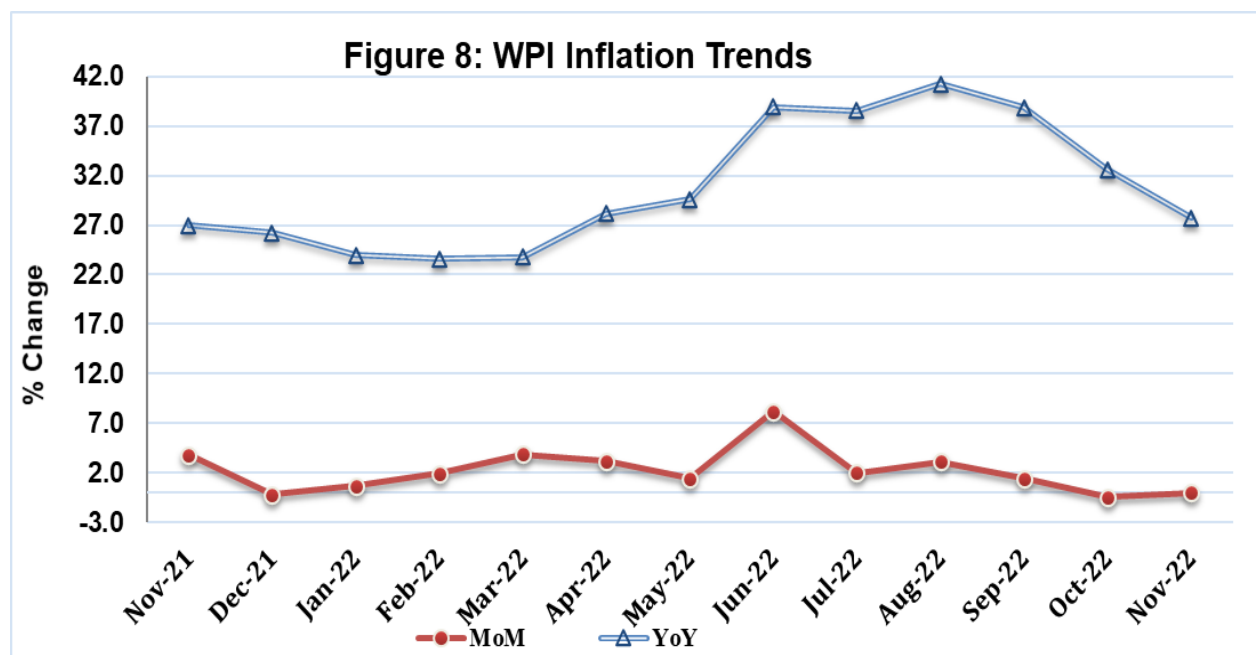
Increased: Lighting Equipments (126.56%), Blankets (21.91%), Dry Fruits (20.4%), Edible Roots / Potatoes (13.72%), Dried Fruits & Nuts (12.7%), Coffee & Tea (12.58%), Fish Live Fresh or Chilled (10.71%), Fuel Wood in Logs (8.91%), Eggs (7.91%), Chuff Cutter (7.11%), Bed Sheets (6.68%), Concrete Mixture (4.79%), Soaps & Detergents (4.69%) and Motorcycles (3.61%).

Decreased: Vegetables (22.12%), Fresh Fruits (21.05%), Furnace Oil (15.29%), Unmanufactured Tobacco (8.1%), Other Cereal Flour (6.87%), Poultry (6.79%), Pulses (6.68%), Fertilizers (5.98%), Fibre Crops (4.52%), Steel Bar & Sheets (3.08%) and Stimulant & Spice Crops (1.94%).

YEAR-ON-YEAR: Top few commodities which varied from previous year are given below:

Increased: Lighting Equipments (378.59%), Chuff Cutter (181.43%), Concrete Mixture (167.23%), Coal not Agglomerated (79.42%), Kerosine Oil (65.81%), Diesel Oil (64.73%), Glass sheets (58.25%), Pulses (55.66%), Motor Spirit (54.42%), Lathe Machines (49.98%), Other Cereal Flour (49.74%) and Coffee & Tea (45.95%).

Decreased: Spices (36.08%), Sugar Refined (8.67%) and Natural Gas Liquefied (0.18%).



Annexure A:CPI (Urban) Index Numbers by Commodity Groups & Commodities (2015-16=100)

Item and Specification	Weight	Index Numbers			% Change in Nov 2022 over			
		Nov 22	Oct 22	Nov 21	Oct 2022	Nov 2021		
General	100.0000	190.80	190.08	156.96	+	0.38	+	21.56
Food and non-alcoholic Bevera	30.4215	216.54	217.09	167.96	-	0.25	+	28.92
01 Wheat	0.6120	257.30	258.90	179.43	-	0.62	+	43.40
02 Wheat flour	3.0075	217.48	219.76	160.43	-	1.04	+	35.56
03 Wheat products	0.0936	228.88	224.06	170.74	+	2.15	+	34.05
04 Besan	0.0830	198.64	205.85	127.25	-	3.50	+	<u>56.10</u>
05 Rice	1.1804	210.69	208.61	150.76	+	1.00	+	39.75
06 Bakery and confectionary	0.4770	212.43	208.05	156.86	+	2.11	+	35.43
07 Nimco	0.1224	224.38	221.93	160.71	+	1.10	+	39.62
08 Meat	2.0411	228.34	227.65	186.39	+	0.30	+	22.51
09 Chicken	1.3631	193.28	203.63	173.58	-	5.08	+	11.35
10 Fish	0.3855	143.06	133.69	118.05	+	7.01	+	21.19
11 Milk fresh	7.1070	190.84	189.38	149.52	+	0.77	+	27.64
12 Milk products	0.6407	192.62	191.38	151.47	+	0.65	+	27.17
13 Milk powder	0.3106	188.51	183.07	143.08	+	2.97	+	31.75
14 Eggs	0.5083	290.44	275.71	212.84	+	5.34	+	36.46
15 Butter	0.0932	301.94	287.66	197.28	+	4.96	+	<u>53.05</u>
16 Mustard oil	0.0120	300.22	299.61	207.49	+	0.20	+	44.69
17 Cooking oil	1.1016	312.38	317.22	220.17	-	1.53	+	41.88
18 Vegetable ghee	1.0324	319.04	324.68	236.06	-	1.74	+	35.15
19 Dry fruits	0.3299	188.42	167.06	146.16	+	12.79	+	28.91
20 Fresh fruits	1.4363	158.10	161.28	127.67	-	1.97	+	23.83
21 Pulse masoor	0.1624	176.56	198.76	127.27	-	11.17	+	38.73
22 Pulse moong	0.1697	155.30	160.18	106.16	-	3.05	+	46.29
23 Pulse mash	0.1152	159.00	166.08	107.61	-	4.26	+	47.76
24 Pulse gram	0.1660	193.02	204.27	123.58	-	5.51	+	<u>56.19</u>
25 Gram whole	0.0912	230.67	235.39	141.09	-	2.01	+	<u>63.49</u>
26 Beans	0.0408	213.41	211.15	177.45	+	1.07	+	20.26
27 Potatoes	0.4496	311.64	272.02	244.99	+	14.57	+	27.21
28 Onions	0.5928	435.40	323.91	113.13	+	34.42	+	<u>284.87</u>
29 Tomatoes	0.3459	430.75	476.29	344.06	-	9.56	+	25.20
30 Fresh vegetables	1.5306	211.04	286.83	199.47	-	26.42	+	5.80
31 Sugar	1.1130	146.66	141.47	162.77	+	3.67	-	9.90
32 Gur	0.0379	158.52	161.11	164.50	-	1.61	-	3.64
33 Honey	0.1017	166.11	166.25	147.40	-	0.08	+	12.69
34 Sweetmeat	0.3535	217.92	215.00	174.52	+	1.36	+	24.87
35 Ice cream	0.1044	171.80	170.61	146.86	+	0.70	+	16.98
36 Condiments and Spices	1.3340	187.52	185.02	207.85	+	1.35	-	9.78
37 Dessert preparation	0.0419	186.73	185.52	133.28	+	0.65	+	40.10
38 Tea	0.8427	247.38	215.51	152.53	+	14.79	+	<u>62.18</u>
39 Beverages	0.8906	160.01	159.35	135.37	+	0.41	+	18.20
Alcoholic Beverages, Tobacco	0.8540	212.67	209.33	155.04	+	1.60	+	37.17
40 Cigarettes	0.7167	193.73	193.39	141.09	+	0.18	+	37.31
41 Pan prepared	0.1373	311.54	292.57	227.85	+	6.48	+	36.73
Clothing and footwear	8.0096	178.94	176.60	149.65	+	1.33	+	19.57
42 Cotton cloth	2.2227	189.00	187.02	154.61	+	1.06	+	22.24
43 Woolen cloth	0.8361	174.44	172.25	143.93	+	1.27	+	21.20
44 Readymade garments	1.3196	166.13	165.44	143.97	+	0.42	+	15.39
45 Woolen readymade garments	0.4307	180.00	159.70	143.59	+	12.71	+	25.36
46 Tailoring	1.0741	181.39	180.27	154.21	+	0.62	+	17.63
47 Hosiery	0.4070	168.45	166.35	146.54	+	1.26	+	14.95
48 Dopatta	0.1713	151.31	147.84	131.01	+	2.35	+	15.50
49 Cleaning and laundering	0.0665	209.23	208.12	172.85	+	0.53	+	21.05
50 Footwear	1.4816	180.41	180.32	150.92	+	0.05	+	19.54
Housing, water, Elec., Gas an	27.0332	163.42	163.50	152.28	-	0.05	+	7.32
51 House rent	19.2558	149.54	149.54	142.06	+	0.00	+	5.27
52 Construction input items	0.3765	212.59	211.67	163.51	+	0.43	+	30.02
53 Construction wage rates	0.2025	185.82	184.71	164.77	+	0.60	+	12.78
54 Water supply	0.5269	171.56	170.32	162.68	+	0.73	+	5.46
55 Garbage collection	0.1064	207.57	207.57	177.79	+	0.00	+	16.75
56 Electricity charges	4.5562	192.60	193.25	167.52	-	0.34	+	14.97
57 Gas charges	1.0807	216.94	216.94	216.94	+	0.00	+	0.00
58 Liquified Hydrocarbons	0.5064	258.48	266.63	258.57	-	3.06	-	0.03
59 Solid Fuel	0.4218	154.89	146.30	125.40	+	5.87	+	23.52

Annexure A:CPI (Urban) Index Numbers by Commodity Groups & Commodities (2015-16=100)

Item and Specification	Weight	Index Numbers			% Change in Nov 2022 over			
		Nov 22	Oct 22	Nov 21	Oct 2022	Nov 2021		
<i>Furnishing and household equi</i>	4.0937	189.70	184.97	147.02	+	2.56	+	29.03
60 Furniture and furnishing	0.4750	181.23	177.89	147.02	+	1.88	+	23.27
61 Carpets	0.0308	131.62	129.24	118.08	+	1.84	+	11.47
62 Household textiles	0.3420	158.69	150.38	137.22	+	5.53	+	15.65
63 Household equipments	1.0032	182.62	180.45	149.76	+	1.20	+	21.94
64 Plastic products	0.0536	160.98	158.76	132.29	+	1.40	+	21.69
65 Major tools & equipments	0.0084	174.41	173.63	140.06	+	0.45	+	24.53
66 Washing soap/detergents/match	1.4112	220.10	212.39	153.47	+	3.63	+	43.42
67 Household servant	0.7695	166.65	164.49	138.23	+	1.31	+	20.56
<i>Health</i>	2.3098	182.00	179.22	159.57	+	1.55	+	14.06
68 Drugs and medicines	1.0735	185.64	181.83	160.71	+	2.10	+	15.51
69 Therapeutic Appliances and Eq	0.0054	126.97	124.75	118.41	+	1.78	+	7.23
70 Doctor (MBBS) clinic fee	0.4044	232.48	229.62	198.64	+	1.25	+	17.04
71 Dental services	0.0156	146.92	145.80	129.62	+	0.77	+	13.35
72 Medical tests	0.2367	157.30	156.42	136.06	+	0.56	+	15.61
73 Hospitals services	0.5742	151.29	149.66	140.80	+	1.09	+	7.45
<i>Transport</i>	6.1368	245.03	245.33	172.43	-	0.12	+	42.10
74 Motor vehicles	0.8097	208.62	207.19	162.77	+	0.69	+	28.17
75 Motor vehicle accessories	0.1941	201.64	196.59	153.36	+	2.57	+	31.48
76 Motor fuel	2.9088	307.69	307.71	202.40	-	0.01	+	52.02
77 Mechanical services	0.4290	175.94	173.59	146.82	+	1.35	+	19.83
78 Motor vehicle tax	0.0482	148.53	148.53	136.37	+	0.00	+	8.92
79 Transport services	1.7470	182.00	184.85	136.40	-	1.54	+	33.43
<i>Communication</i>	2.3536	114.40	114.37	112.42	+	0.03	+	1.76
80 Postal services	0.0190	185.94	185.94	163.41	+	0.00	+	13.79
81 Communication apparatus	0.4524	135.80	135.64	128.79	+	0.12	+	5.44
82 Communication Services	1.8822	108.53	108.53	107.97	+	0.00	+	0.52
<i>Recreation and culture</i>	1.7301	158.91	157.14	129.92	+	1.13	+	22.31
83 Recreation and culture	0.6478	130.23	126.27	115.88	+	3.14	+	12.38
84 Text books	0.6655	161.51	161.20	134.04	+	0.19	+	20.49
85 Newspapers	0.0716	157.93	157.93	151.55	+	0.00	+	4.21
86 stationery	0.3452	207.93	207.08	143.83	+	0.41	+	44.57
<i>Education</i>	4.8807	165.87	165.49	149.34	+	0.23	+	11.07
87 Education	4.8807	165.87	165.49	149.34	+	0.23	+	11.07
<i>Restaurants and hotels</i>	7.4050	196.97	193.58	152.10	+	1.75	+	29.50
88 Readymade food	5.5235	204.81	201.99	153.74	+	1.40	+	33.22
89 Marriage Hall Charges	1.7514	177.52	172.17	149.46	+	3.11	+	18.77
90 Accommodation Services	0.1301	126.05	124.74	118.21	+	1.05	+	6.63
<i>Misc. goods and services</i>	4.7720	198.51	195.11	160.41	+	1.74	+	23.75
91 Personal Grooming Services	0.8001	185.80	184.03	143.51	+	0.96	+	29.47
92 Electrical Appliances for Per	0.0465	143.67	143.08	120.76	+	0.41	+	18.97
93 Appliances/Articles/Products	2.9807	185.91	184.04	149.52	+	1.02	+	24.34
94 Personal Effects n.e.c.	0.9447	251.72	241.97	211.02	+	4.03	+	19.29

Annexure B:CPI (Rural) Index Numbers by Commodity Groups & Commodities (2015-16=100)

Item and Specification	Weight	Index Numbers			% Change in Nov 2022 over	
		Nov 22	Oct 22	Nov 21	Oct 2022	Nov 2021
General	100.0000	203.57	200.96	160.03	+ 1.30	+ 27.21
Food and non-alcoholic Bevera	40.8668	226.31	225.37	169.33	+ 0.42	+ 33.65
01 Wheat	3.4736	260.61	259.70	177.09	+ 0.35	+ 47.16
02 Wheat Flour	3.4297	222.87	227.08	167.01	- 1.85	+ 33.45
03 Wheat Products	0.1068	223.07	215.38	162.47	+ 3.57	+ 37.30
04 Besan	0.0728	213.94	212.64	133.93	+ 0.61	+ <u>59.74</u>
05 Rice	1.5501	268.34	264.18	191.64	+ 1.57	+ 40.02
06 Bakery and Confectionary	0.3702	218.97	215.01	155.80	+ 1.84	+ 40.55
07 Nimco	0.0774	222.08	214.88	140.08	+ 3.35	+ <u>58.54</u>
08 Meat	1.7146	226.47	225.46	183.13	+ 0.45	+ 23.67
09 Chicken	1.4641	205.47	211.18	180.67	- 2.70	+ 13.73
10 Fish	0.2640	153.35	148.13	133.44	+ 3.52	+ 14.92
11 Milk fresh	10.3803	186.60	179.15	143.51	+ 4.16	+ 30.03
12 Milk products	0.9624	179.05	170.46	142.10	+ 5.04	+ 26.00
13 Milk powder	0.1062	167.77	163.18	131.80	+ 2.81	+ 27.29
14 Eggs	0.5665	277.26	269.71	201.40	+ 2.80	+ 37.67
15 Butter	0.3333	195.96	189.91	153.97	+ 3.19	+ 27.27
16 Mustard oil	0.0136	308.34	307.40	209.95	+ 0.31	+ 46.86
17 Cooking oil	0.6011	343.91	348.51	241.53	- 1.32	+ 42.39
18 Vegetable ghee	2.3764	350.90	354.96	246.46	- 1.14	+ 42.38
19 Dry fruits	0.2496	218.09	187.03	163.97	+ 16.61	+ 33.01
20 Fresh fruits	1.4505	165.93	162.46	121.44	+ 2.14	+ 36.64
21 Pulse Masoor	0.2076	198.07	225.92	132.58	- 12.33	+ 49.40
22 Pulse Moong	0.2510	164.91	167.44	112.28	- 1.51	+ 46.87
23 Pulse Mash	0.1465	161.94	170.01	107.40	- 4.75	+ <u>50.78</u>
24 Pulse Gram	0.2751	204.46	211.13	125.76	- 3.16	+ <u>62.58</u>
25 Gram Whole	0.1116	241.85	247.63	140.88	- 2.33	+ <u>71.67</u>
26 Beans	0.0896	236.47	234.05	181.45	+ 1.03	+ 30.32
27 Potatoes	0.7437	322.83	305.35	261.90	+ 5.72	+ 23.26
28 Onions	0.8965	408.85	316.41	105.77	+ 29.22	+ <u>286.55</u>
29 Tomatoes	0.5069	442.80	489.67	325.71	- 9.57	+ 35.95
30 Fresh Vegetables	2.0947	216.14	295.60	201.77	- 26.88	+ 7.12
31 Sugar	2.0296	146.71	141.41	170.72	+ 3.75	- 14.06
32 Gur	0.1522	155.82	159.86	162.25	- 2.53	- 3.96
33 Honey	0.0296	168.19	165.86	149.60	+ 1.40	+ 12.43
34 Sweetmeat	0.3967	204.44	200.14	152.64	+ 2.15	+ 33.94
35 Ice Cream	0.0568	161.27	159.63	142.84	+ 1.03	+ 12.90
36 Condiments and Spices	1.4919	212.01	200.61	162.55	+ 5.68	+ 30.43
37 Dessert Preparation	0.0133	175.17	172.04	133.57	+ 1.82	+ 31.14
38 Tea	1.2566	230.57	208.81	149.65	+ 10.42	+ <u>54.07</u>
39 Beverages	0.5537	156.39	155.54	139.06	+ 0.55	+ 12.46
Alcoholic Beverages, Tobacco	1.2786	184.13	182.99	136.96	+ 0.62	+ 34.44
40 Cigarettes	1.2364	181.73	180.77	135.47	+ 0.53	+ 34.15
41 Pan Prepared	0.0422	254.47	248.13	180.77	+ 2.56	+ 40.77
Clothing and footwear	9.4826	186.63	180.87	158.97	+ 3.18	+ 17.40
42 Cotton Cloth	2.8381	201.60	198.85	173.70	+ 1.38	+ 16.06
43 Woolen Cloth	1.0959	181.26	173.97	151.79	+ 4.19	+ 19.41
44 Readymade Garments	1.1345	178.05	174.41	152.58	+ 2.09	+ 16.69
45 Woolen Readymade Garments	0.5401	183.31	166.25	156.36	+ 10.26	+ 17.24
46 Tailoring	1.2999	184.16	182.61	155.45	+ 0.85	+ 18.47
47 Hosiery	0.4322	240.97	231.69	195.59	+ 4.01	+ 23.20
48 Dopatta	0.2078	171.26	167.67	149.43	+ 2.14	+ 14.61
49 Cleaning and Laundering	0.0176	195.39	190.42	155.79	+ 2.61	+ 25.42
50 Footwear	1.9165	164.54	154.85	140.96	+ 6.26	+ 16.73
Housing, water, Elec., Gas an	18.4853	176.43	173.31	152.66	+ 1.80	+ 15.57
51 House Rent	8.6110	150.40	150.40	142.07	+ 0.00	+ 5.86
52 Construction Input Items	0.6306	194.29	189.95	144.29	+ 2.28	+ 34.65
53 Construction Wage Rates	0.2526	187.92	184.88	166.14	+ 1.64	+ 13.11
54 Water Supply	0.0645	222.06	222.06	218.49	+ 0.00	+ 1.63
55 Garbage Collection	0.0080	169.61	169.61	154.75	+ 0.00	+ 9.60
56 Electricity Charges	3.4431	192.60	193.25	167.52	- 0.34	+ 14.97
57 Liquified Hydrocarbons	0.9994	240.13	245.66	212.50	- 2.25	+ 13.00
58 Solid Fuel	4.4761	196.03	182.17	147.71	+ 7.61	+ 32.71

Annexure B:CPI (Rural) Index Numbers by Commodity Groups & Commodities (2015-16=100)

Item and Specification	Weight	Index Numbers			% Change in Nov 2022 over			
		Nov 22	Oct 22	Nov 21	Oct 2022	Nov 2021		
<i>Furnishing and household equi</i>	4.1031	195.05	188.95	150.96	+	3.23	+	29.21
59 Furniture and Furnishing	0.5786	187.85	184.37	153.48	+	1.89	+	22.39
60 Household Textiles	0.4382	174.27	162.32	141.09	+	7.36	+	23.52
61 Household Equipments	1.2774	194.70	191.03	158.09	+	1.92	+	23.16
62 Plastic Products	0.0776	202.83	199.75	162.21	+	1.54	+	25.04
63 Major Tools and Equipments	0.0324	174.96	167.24	135.10	+	4.62	+	29.50
64 Washing Soaps, Detergents and	1.6989	203.14	195.72	147.08	+	3.79	+	38.12
<i>Health</i>	3.5141	190.01	185.70	158.14	+	2.32	+	20.15
65 Drugs and Medicines	1.5792	207.56	199.93	159.37	+	3.82	+	30.24
66 Doctor Clinic Fee	0.5128	232.55	229.98	198.33	+	1.12	+	17.25
67 Dental Services	0.0181	167.15	164.62	136.74	+	1.54	+	22.24
68 Medical Tests	0.3967	176.40	174.45	155.84	+	1.12	+	13.19
69 Hospitals Services	1.0073	146.62	145.68	137.04	+	0.65	+	6.99
<i>Transport</i>	5.5580	245.68	245.62	166.14	+	0.02	+	47.88
70 Motor Vehicles	0.7305	164.00	160.05	142.56	+	2.47	+	15.04
71 Motor Vehicles Accessories	0.1572	202.03	194.90	154.43	+	3.66	+	30.82
72 Motor Fuels	2.4932	306.14	306.24	199.18	-	0.03	+	53.70
73 Mechanical Services	0.3645	182.65	181.69	158.20	+	0.53	+	15.46
74 Motor Vehicle Tax	0.0174	150.93	150.93	120.86	+	0.00	+	24.88
75 Transport Services	1.7952	212.48	214.61	132.92	-	0.99	+	59.86
<i>Communication</i>	1.9940	107.43	107.33	105.96	+	0.09	+	1.39
76 Postal Services	0.0070	149.43	149.43	149.43	+	0.00	+	0.00
77 Communication Apparatus	0.3362	130.35	129.79	122.40	+	0.43	+	6.50
78 Communication Services	1.6508	102.58	102.58	102.42	+	0.00	+	0.16
<i>Recreation and culture</i>	1.3764	181.76	175.86	138.41	+	3.35	+	31.32
79 Recreation and Culture	0.4763	188.47	180.56	142.52	+	4.38	+	32.24
80 Text Books	0.5047	158.47	158.47	126.09	+	0.00	+	25.68
81 Newspapers	0.0230	165.72	165.72	165.56	+	0.00	+	0.10
82 Stationery	0.3724	205.74	194.06	148.17	+	6.02	+	38.85
<i>Education</i>	2.1342	155.10	153.81	139.62	+	0.84	+	11.09
83 Education	2.1342	155.10	153.81	139.62	+	0.84	+	11.09
<i>Restaurants and hotels</i>	6.1895	195.67	191.32	154.84	+	2.27	+	26.37
84 Readymade Food	3.8001	216.76	212.92	165.02	+	1.80	+	31.35
85 Marriage Hall Charges	2.2525	165.38	159.90	140.90	+	3.43	+	17.37
86 Accommodation Services	0.1369	108.81	108.81	101.62	+	0.00	+	7.08
<i>Misc. goods and services</i>	5.0174	199.72	193.59	163.87	+	3.17	+	21.88
87 Personal Grooming Services	1.5363	215.41	209.13	169.23	+	3.00	+	27.29
88 Appliances/Articles/Products	2.2746	160.89	158.11	138.55	+	1.76	+	16.12
89 Personal Effects n.e.c.	1.2065	252.96	240.68	204.78	+	5.10	+	23.53

Annexure C: Wholesale Price Indices by Major Groups & Commodities

(2015-16=100)

Item and Specification	Weight	Index Numbers			% Change in Nov 2022 over			
		Nov 22	Oct 22	Nov 21	Oct 2022	Nov 2021		
General	100.0000	242.09	242.15	189.54	-	0.02	+	27.73
Agriculture Forestry & Fisher	25.7674	225.99	234.75	188.90	-	3.73	+	19.63
001 Wheat	0.6297	254.53	256.55	178.16	-	0.79	+	42.87
002 Maize	0.6764	234.03	234.62	174.25	-	0.25	+	34.31
003 Rice	2.4413	227.75	226.51	176.99	+	0.55	+	28.68
004 Sorghum / Jowar	0.0214	238.18	236.23	202.39	+	0.83	+	17.68
005 Millet / Bajra	0.0374	217.63	210.70	201.54	+	3.29	+	7.98
006 Vegetables	1.2441	317.30	407.42	238.79	-	22.12	+	32.88
007 Fresh Fruits	1.5144	156.13	197.77	120.82	-	21.05	+	29.23
008 Dry Fruits	0.2478	199.35	165.57	141.78	+	20.40	+	40.61
009 Cotton Seeds	1.1511	158.34	157.94	144.71	+	0.25	+	9.42
010 Other Oil Seeds	0.0722	296.95	294.92	232.39	+	0.69	+	27.78
011 Edible Roots / Potatoes	0.2540	397.86	349.85	298.25	+	13.72	+	33.40
012 Stimulant & Spice Crops	0.1634	280.03	285.58	226.93	-	1.94	+	23.40
013 Pulses	0.4901	213.30	228.56	137.03	-	6.68	+	55.66
014 Sugar Crops	1.0725	186.59	186.59	169.98	+	0.00	+	9.77
015 Fibre Crops	5.3169	312.91	327.72	301.86	-	4.52	+	3.66
016 Unmanufactured Tobacco	0.0742	260.61	283.57	245.79	-	8.10	+	6.03
017 Poultry	0.5633	185.55	199.06	171.82	-	6.79	+	7.99
018 Raw Milk from Bovine Animals	7.0279	187.95	190.61	143.83	-	1.40	+	30.68
019 Eggs	0.5034	295.69	274.02	211.32	+	7.91	+	39.93
020 Raw Animal Materials / Wool	0.0351	110.52	110.36	108.11	+	0.14	+	2.23
021 Hides, Skins & Fur Skins, Raw	0.4834	45.67	45.58	32.59	+	0.20	+	40.14
022 Fuel Wood in Logs	0.0179	154.80	142.14	136.78	+	8.91	+	13.17
023 Fish Live Fresh or Chilled	1.7295	181.24	163.70	158.05	+	10.71	+	14.67
Ores/Minerals, Elec., Gas & W	12.0069	219.41	220.43	187.34	-	0.46	+	17.12
024 Coal not Agglomerated	0.7508	135.98	135.98	75.79	+	0.00	+	79.42
025 Natural Gas Liquified	5.7065	210.05	211.37	210.42	-	0.62	-	0.18
026 Salt & Pure Sodium Chloride	0.0584	207.31	206.88	169.63	+	0.21	+	22.21
027 Electrical Energy	5.4912	240.67	241.54	178.79	-	0.36	+	34.61
Food, Beverages, Tobacco, Textil	31.1122	212.87	211.88	176.04	+	0.47	+	20.92
Food Products, Beverages &	20.0718	214.19	212.85	168.70	+	0.63	+	26.97
028 Meat of Animals	3.4559	220.41	222.13	190.14	-	0.77	+	15.92
029 Vegetables & Fruit Juice	0.0058	174.21	173.05	126.63	+	0.67	+	37.57
030 Dried Fruits & Nuts	0.1733	257.49	228.48	182.51	+	12.70	+	41.08
031 Fruit Juices	0.3880	167.18	166.19	132.16	+	0.60	+	26.50
032 Vegetable Oils Refined	1.9242	266.40	262.31	197.34	+	1.56	+	35.00
033 Vegetable Ghee	1.5632	339.28	345.80	245.26	-	1.89	+	38.33
034 Oil Cakes	0.9611	222.52	220.90	167.01	+	0.73	+	33.24
035 Processed Liquid Milk	4.4437	197.18	194.80	144.24	+	1.22	+	36.70
036 Milk & Cream in Solid Form	0.0316	184.45	179.58	137.40	+	2.71	+	34.24
037 Ice Cream	0.0047	167.02	167.02	148.14	+	0.00	+	12.74
038 Dairy Products N.E.C	0.0117	178.33	175.76	143.55	+	1.46	+	24.23
039 Wheat Flour	2.3034	228.61	233.09	166.38	-	1.92	+	37.40
040 Other Cereal Flour	0.0604	198.61	213.26	132.64	-	6.87	+	49.74
041 Sugar Refined	1.7975	146.81	142.69	160.75	+	2.89	-	8.67
042 Chocolate	0.0139	96.68	96.27	89.55	+	0.43	+	7.96
043 Sugar Confectionary	0.0738	202.90	202.19	188.88	+	0.35	+	7.42
044 Coffee & Tea	0.7303	206.88	183.76	141.75	+	12.58	+	45.95
045 Spices	0.1449	214.22	207.08	335.16	+	3.45	-	36.08
046 Other Food Products	0.0336	139.86	139.77	119.82	+	0.06	+	16.73
047 Mineral Water	0.0207	159.28	158.93	126.02	+	0.22	+	26.39
048 Beverages	0.6303	161.82	156.84	134.00	+	3.18	+	20.76
049 Tobacco Products	1.2998	134.10	134.10	104.23	+	0.00	+	28.66
Textiles & Apparels	10.3289	213.98	213.61	193.73	+	0.17	+	10.45
050 Cotton Yarn	5.2491	239.61	239.61	239.61	+	0.00	+	0.00
051 Nylon Yarn	0.1719	95.24	95.24	95.24	+	0.00	+	0.00
052 Blended Yarn	0.1689	148.12	148.12	148.12	+	0.00	+	0.00
053 Woven Fabrics	0.0128	185.47	185.47	170.33	+	0.00	+	8.89
054 Cotton Fabrics	0.6343	201.85	201.73	173.53	+	0.06	+	16.32
055 Other Fabrics	1.1016	176.04	175.49	126.80	+	0.31	+	38.83
056 Silk & Reyon Fabrics	0.7350	256.00	253.96	177.09	+	0.80	+	44.56
057 Towels	0.1235	170.33	170.23	144.30	+	0.06	+	18.04
058 Blankets	0.0029	129.30	106.06	105.33	+	21.91	+	22.76
059 Bed Sheets	0.0913	142.84	133.90	127.92	+	6.68	+	11.66

Annexure C: Wholesale Price Indices by Major Groups & Commodities (2015-16=100)

Item and Specification	Weight	Index Numbers			% Change in Nov 2022 over	
		Nov 22	Oct 22	Nov 21	Oct 2022	Nov 2021
060 Quilts	0.0019	171.16	166.25	121.31	+ 2.95	+ 41.09
061 Woolen Carpets	0.0383	146.63	146.63	146.63	+ 0.00	+ 0.00
062 Synthetic Carpets	0.0566	132.11	131.66	125.03	+ 0.34	+ 5.66
063 Hosiery Products	0.8832	163.35	162.64	144.38	+ 0.44	+ 13.14
064 Readymade Garments	1.0576	195.17	195.04	141.38	+ 0.07	+ 38.05
Leather Products	0.7115	159.57	159.57	126.23	+ 0.00	+ 26.41
065 Leather Without Hair	0.2973	140.15	140.15	119.80	+ 0.00	+ 16.99
066 Other Leather N.E.C	0.2567	148.41	148.41	118.07	+ 0.00	+ 25.70
067 Footwears	0.1575	214.40	214.40	151.69	+ 0.00	+ 41.34
Other Transportable Goods	22.3979	292.07	305.46	215.30	- 4.38	+ 35.66
068 Timber	0.0165	191.64	191.64	163.17	+ 0.00	+ 17.45
069 Printing Paper	0.4279	184.76	184.76	130.70	+ 0.00	+ 41.36
070 Hard Board	0.1579	146.50	146.50	146.50	+ 0.00	+ 0.00
071 Motor Spirit	1.6268	317.82	317.82	205.82	+ 0.00	+ <u>54.42</u>
072 Diesel Oil	5.4849	350.07	350.07	212.51	+ 0.00	+ <u>64.73</u>
073 Kerosine Oil	0.2151	376.21	376.21	226.89	+ 0.00	+ <u>65.81</u>
074 Furnace Oil	3.2664	476.80	562.89	442.74	- 15.29	+ 7.69
075 Mobil Oil	0.7114	207.11	206.61	144.86	+ 0.24	+ 42.97
076 Chemicals	1.7720	265.78	263.05	192.57	+ 1.04	+ 38.02
077 Dyeing Material	0.1539	146.16	146.16	146.16	+ 0.00	+ 0.00
078 Fertilizers	2.8657	199.46	212.14	142.98	- 5.98	+ 39.50
079 Pesticides	0.2763	155.30	155.30	146.51	+ 0.00	+ 6.00
080 Insecticides	0.1276	111.49	111.49	111.49	+ 0.00	+ 0.00
081 Paints & Varnishes	0.1916	200.88	200.88	153.85	+ 0.00	+ 30.57
082 Medicines	1.1428	236.91	233.43	161.64	+ 1.49	+ 46.57
083 Soaps & Detergents	0.8168	163.51	156.19	130.82	+ 4.69	+ 24.99
084 Auto Tyres	0.2703	186.13	184.99	147.75	+ 0.62	+ 25.98
085 Plastic Products	0.4550	134.54	134.11	122.37	+ 0.32	+ 9.95
086 Glass sheets	0.2089	237.01	234.72	149.77	+ 0.98	+ <u>58.25</u>
087 Other Glass Articles	0.1635	159.40	158.06	158.06	+ 0.85	+ 0.85
088 Ceramics & Sanitary Fixture	0.0244	154.89	154.89	137.83	+ 0.00	+ 12.38
089 Bricks, Blocks & Tiles	0.1566	165.88	165.26	143.66	+ 0.38	+ 15.47
090 Cement	1.8145	197.64	196.96	139.80	+ 0.35	+ 41.37
091 Bed Foam	0.0006	264.32	262.33	197.07	+ 0.76	+ 34.12
092 Matches	0.0505	1446.1	1446.1	1195.3	+ 0.00	+ 20.98
		7	7	7		
Metal Product, Machinery & Eq	8.7156	296.80	239.26	176.48	+ 24.05	+ <u>68.18</u>
093 Steel Bar & Sheets	1.4615	275.00	283.75	259.81	- 3.08	+ 5.85
094 Pipe Fittings	0.0780	278.60	278.60	208.61	+ 0.00	+ 33.55
095 Steel Products	0.3879	142.69	142.43	140.75	+ 0.18	+ 1.38
096 Engines & Motors	0.0046	117.67	117.67	107.29	+ 0.00	+ 9.67
097 Vacuum Pumps	0.0155	107.56	107.56	107.56	+ 0.00	+ 0.00
098 Air Conditioners	0.0049	188.78	188.78	129.14	+ 0.00	+ 46.18
099 Cultivators	0.0551	174.49	174.49	174.49	+ 0.00	+ 0.00
100 Chuff Cutter	0.1293	361.84	337.83	128.57	+ 7.11	+ <u>181.43</u>
101 Tractors	0.0028	206.24	206.24	146.62	+ 0.00	+ 40.66
102 Lathe Machines	0.0525	364.02	364.02	242.71	+ 0.00	+ 49.98
103 Concrete Mixture	0.0107	267.23	255.01	100.00	+ 4.79	+ <u>167.23</u>
104 Fridge, WashM, SewM, Fans, Iron	1.1645	187.09	186.54	171.12	+ 0.29	+ 9.33
105 Electric Wires	0.0912	193.49	192.85	148.23	+ 0.33	+ 30.53
106 Lighting Equipments	1.4431	630.54	278.31	131.75	+ <u>126.56</u>	+ <u>378.59</u>
107 Radio & Television	0.1843	122.67	122.49	108.07	+ 0.15	+ 13.51
108 Motor Vehicles	0.0244	208.83	205.44	166.28	+ 1.65	+ 25.59
109 Motorcycles	0.2570	203.15	196.08	154.28	+ 3.61	+ 31.68
110 Bicycles	3.3483	239.03	239.03	172.55	+ 0.00	+ 38.53