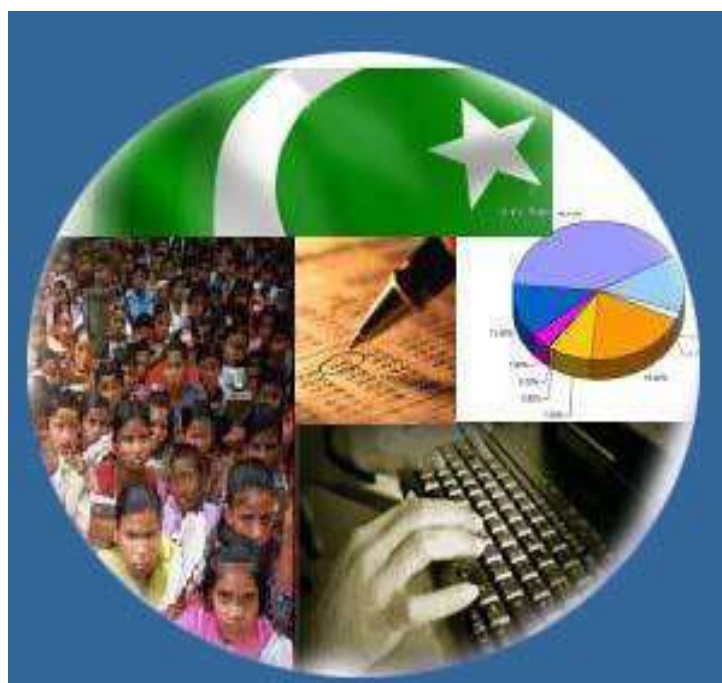




Monthly Review on Price Indices



May, 2022
(Base Year 2015-16)

Government of Pakistan
Ministry of Planning, Development & Special Initiatives
Pakistan Bureau of Statistics
Islamabad

PRICE STATISTICS TEAM

S#	Name	Designation
1.	Dr. Naeem Uz Zafar	Chief Statistician
2.	Syed Ejaz Wasti	Member (National Accounts/Prices)
3.	Dr. Bahrawar Jan	Deputy Director General
4.	Mr. Naseer Ahmad	Director
5.	Dr. Ahtasham Gul	Chief Statistical Officer
6.	Mr. Tauseef ul Hai Khan	Assistant Census Commissioner
7.	Mr. Adnan Shams	Statistical Officer
8.	Mr. Muhammad Mazhar	Statistical Officer
7.	Mr. Umar Farooq	Statistical Assistant
8.	Mrs. Madiha Gulfraz	Statistical Assistant
9.	Mrs. Humail Fatima	Statistical Assistant
10	Sheikh Muhammad Umar Farooq	Statistical Assistant
11.	Mr. Ansar Mahmood	Statistical Assistant

IT & SOFTWARE TEAM

1.	Mrs. Sobia Munawar	Director (DP)
2.	Mr. Muhammad Ehtesham	Director (DP)
3.	Mr. Raja Aurangzeb	Data Processing Assistant
4.	Mr. Muhammad Kibria	Data Processing Assistant
5.	Mr. Muhammad Irfan Bajwa	Data Processing Assistant

Inflation in Brief

- CPI inflation General**, increased by 13.8% on year-on-year basis in May 2022 as compared to an increase of 13.4% in the previous month and 10.9% in May 2021. On month-on-month basis, it increased by 0.4% in May 2022 as compared to increase of 1.6% in the previous month and increase of 0.1% in May 2021.
- CPI inflation Urban**, increased by 12.4% on year-on-year basis in May 2022 as compared to an increase of 12.2% in the previous month and 10.8% in May 2021. On month-on-month basis, it increased by 0.3% in May 2022 as compared to increase of 1.6% in the previous month and increase of 0.2% in May 2021.
- CPI inflation Rural**, increased by 15.9% on year-on-year basis in May 2022 as compared to an increase of 15.1% in the previous month and 10.9% in May 2021. On month-on-month basis, it increased by 0.6% in May 2022 as compared to increase of 1.6% in the previous month and decrease of -0.03% in May 2021.
- SPI inflation** on YoY increased by 14.1% in May 2022 as compared to an increase of 14.2% a month earlier and an increase of 19.7% in May 2021. On MoM basis, it increased by 0.6% in May 2022 as compared to increase of 1.5% a month earlier and increase of 0.8% in May 2021.
- WPI inflation** on YoY basis increased by 29.6% in May 2022 as compared to an increase of 28.1% a month earlier and an increase of 19.4% in May 2021. WPI inflation on MoM basis increased by 1.4% in May 2022 as compared to increase of 3.2% a month earlier and increase of 0.3% in corresponding month i.e. May 2021.
- Figures 1 and 2 show graphically the yearly data of Table 1.a for Urban and Rural CPI while Table 1.1 shows "Period Average" and "YoY" percent changes in indices of three years.

Table 1.a General Inflation (%) (Base 2015-16)																		
PERIOD	CPI														SPI**		WPI	
	General						Food				Non-Food							
	National		Urban		Rural		Urban		Rural		Urban		Rural		YoY	MoM	YoY	MoM
	YoY	MoM	YoY	MoM	YoY	MoM	YoY	MoM	YoY	MoM	YoY	MoM	YoY	MoM				
Jul-20	9.3	2.5	7.8	2.2	11.6	3.0	15.1	3.0	17.8	4.0	3.9	1.7	6.5	2.2	13.7	3.0	3.2	5.4
Aug-20	8.2	0.6	7.1	0.8	9.9	0.4	11.3	-0.3	13.5	-0.9	4.8	1.5	6.8	1.5	11.7	0.9	3.3	1.3
Sep-20	9.0	1.5	7.7	1.3	11.1	2.0	12.4	3.0	15.8	3.8	5.0	0.2	7.2	0.3	12.0	2.1	4.3	1.0
Oct-20	8.9	1.7	7.3	1.3	11.3	2.4	13.9	2.8	17.7	4.3	3.6	0.3	5.8	0.5	12.3	3.0	5.1	2.9
Nov-20	8.3	0.8	7.0	0.6	10.5	1.1	13.0	1.6	16.1	2.0	3.4	0.1	5.5	0.2	9.9	1.1	5.0	-0.9
Dec-20	8.0	-0.7	7.0	-0.3	9.5	-1.2	12.6	-2.1	13.4	-3.4	3.8	0.7	6.1	1.0	9.1	-2.7	5.7	0.3
Jan-21	5.7	-0.2	5.0	-0.2	6.6	-0.3	7.3	-2.1	7.2	-2.2	3.7	1.1	6.1	1.5	7.7	-0.8	6.4	2.5
Feb-21	8.7	1.8	8.6	2.3	8.8	1.1	10.3	1.3	9.1	0.2	7.6	2.8	8.6	2.0	11.9	3.1	9.5	2.2
Mar-21	9.1	0.4	8.7	0.3	9.5	0.5	11.5	1.7	11.1	1.5	7.1	-0.6	8.1	-0.4	18.7	5.7	14.6	3.7
Apr-21	11.1	1.0	11.0	1.3	11.3	0.6	15.7	2.7	14.1	0.9	8.2	0.5	8.9	0.3	21.3	0.4	16.6	-0.4
May-21	10.9	0.1	10.8	0.2	10.9	-0.03	15.3	1.1	12.8	0.2	8.3	-0.3	9.2	-0.3	19.7	0.8	19.4	0.3
Jun-21	9.7	-0.3	9.6	-0.4	9.7	-0.1	11.0	-1.9	9.8	-0.8	8.8	0.5	9.7	0.6	17.6	-0.4	20.9	0.9
Jul-21	8.4	1.3	8.7	1.29	8.0	1.4	9.4	1.5	7.3	1.6	8.2	1.1	8.7	1.2	16.2	1.8	17.3	2.3
Aug-21	8.4	0.6	8.3	0.5	8.4	0.7	10.2	0.5	9.1	0.8	7.2	0.5	7.7	0.6	15.9	0.7	17.1	1.2
Sep-21	9.0	2.1	9.1	2.0	8.8	2.3	10.8	3.6	9.1	3.7	8.1	1.1	8.5	1.0	16.6	2.7	19.6	3.2
Oct-21	9.2	1.9	9.6	1.7	8.7	2.2	9.4	1.5	7.2	2.6	9.7	1.8	10.0	1.9	15.2	2.1	21.2	4.2
Nov-21	11.5	3.0	12.0	2.9	10.9	3.1	11.9	3.9	8.6	3.3	12.0	2.2	13.0	3.0	18.1	3.6	27.0	3.8
Dec-21	12.3	-0.02	12.7	0.3	11.6	-0.5	11.7	-2.3	9.0	-3.1	13.4	2.0	14.0	1.9	20.9	-0.4	26.2	-0.2
Jan-22	13.0	0.4	13.0	0.1	12.9	0.9	13.3	-0.8	11.8	0.4	12.8	0.6	13.9	1.4	20.9	-0.8	24.0	0.6
Feb-22	12.2	1.2	11.5	0.9	13.3	1.5	14.3	2.2	14.6	2.6	9.9	0.2	12.2	0.4	18.7	1.3	23.6	1.9
Mar-22	12.7	0.8	11.9	0.7	13.9	1.0	14.5	1.8	15.5	2.3	10.4	-0.1	12.5	-0.2	13.0	0.6	23.8	3.9
Apr-22	13.4	1.6	12.2	1.6	15.1	1.6	15.6	3.7	17.7	2.8	10.2	0.3	12.8	0.5	14.2	1.5	28.1	3.2
May-22	13.8	0.4	12.4	0.3	15.9	0.6	15.5	1.0	19.0	1.3	10.4	-0.1	13.1	0.0	14.1	0.6	29.6	1.4

** SPI for quintile 1. Digits 0.0* are due to rounding off.

Core inflation (NFNE)

7. Measured by **non-food non-energy Urban** increased by 9.7% on (YoY) basis in May, 2022 as compared to an increase of 9.1% in the previous month and 6.8% in May, 2021. On (MoM) basis, it increased by 0.7% in May, 2022 as compared to increase of 1.1% in previous month, and an increase of 0.2% in corresponding month of last year i.e. May, 2021.
8. Measured by **non-food non-energy Rural** increased by 11.5% on (YoY) basis in May, 2022 as compared to an increase of 10.9% in the previous month and 7.6% in May, 2021. On (MoM) basis, it increased by 0.9% in May, 2022 as compared to an increase of 1.2% in previous month, and an increase of 0.3% in corresponding month of last year i.e. May, 2021.

Core inflation (Trimmed)

9. Measured by 20% **weighted trimmed mean Urban** increased by 10.7% on (YoY) basis in May, 2022 as compared to 10.5% in the previous month and 10.0% in May, 2021. On (MoM) basis, it increased by 0.8% in May, 2022 as compared to an increase of 0.9% in the previous month and an increase of 0.2% in corresponding month of last year i.e. May, 2021.
10. Measured by 20% **weighted trimmed mean Rural** increased by 14.1% on (YoY) basis in May, 2022 as compared to 12.8% in the previous month and by 10.3% in May, 2021. On (MoM) basis, it increased by 1.4% in May, 2022 as compared to an increase of 0.9% in the previous month and an increase of 0.4% in corresponding month of last year i.e. May, 2021.

Table 1.b Core Inflation (%) (Base 2015-16)

Period	NFNE				Trimmed			
	Urban		Rural		Urban		Rural	
	YoY	MoM	YoY	MoM	YoY	MoM	YoY	MoM
May-21	6.8	0.2	7.6	0.3	10.0	0.2	10.3	0.4
Jun-21	6.7	0.3	7.3	0.4	9.4	0.3	9.8	0.6
Jul-21	6.9	0.8	6.9	0.7	9.0	0.8	8.4	0.8
Aug-21	6.3	0.2	6.2	0.2	7.8	0.4	7.8	0.6
Sep-21	6.4	0.4	6.2	0.5	8.7	0.9	8.2	1.2
Oct-21	6.7	0.9	6.7	1.0	8.7	1.1	8.2	1.6
Nov-21	7.6	1.1	8.2	1.8	9.8	1.7	9.5	2.2
Dec-21	8.3	1.1	8.9	1.1	10.8	1.1	10.3	1.0
Jan-22	8.2	0.8	9.0	1.2	10.6	0.5	10.9	1.1
Feb-22	7.8	0.8	9.4	0.9	9.8	0.8	11.3	1.2
Mar-22	8.9	1.2	10.3	1.1	10.5	0.8	11.7	0.8
Apr-22	9.1	1.1	10.9	1.2	10.5	0.9	12.8	0.9
May-22	9.7	0.7	11.5	0.9	10.7	0.8	14.1	1.4

Table 1.1 Period Average and Y-o-Y % Change

INDEX	Average July- May % changes			May over May % changes		
	2021-2022	2020-2021	2019-2020	2021-2022	2020-2021	2019-2020
CPI (National)	11.29	8.83	10.94	13.76	10.87	8.22
CPI (Urban)	11.07	8.00	10.41	12.36	10.84	7.27
CPI (Rural)	11.63	10.07	11.77	15.88	10.91	9.69
SPI	16.65	13.49	13.95	14.05	19.72	10.99
WPI	23.55	8.41	11.13	29.61	19.39	1.50

Figure 1: Urban Inflation - YoY, Special Indices

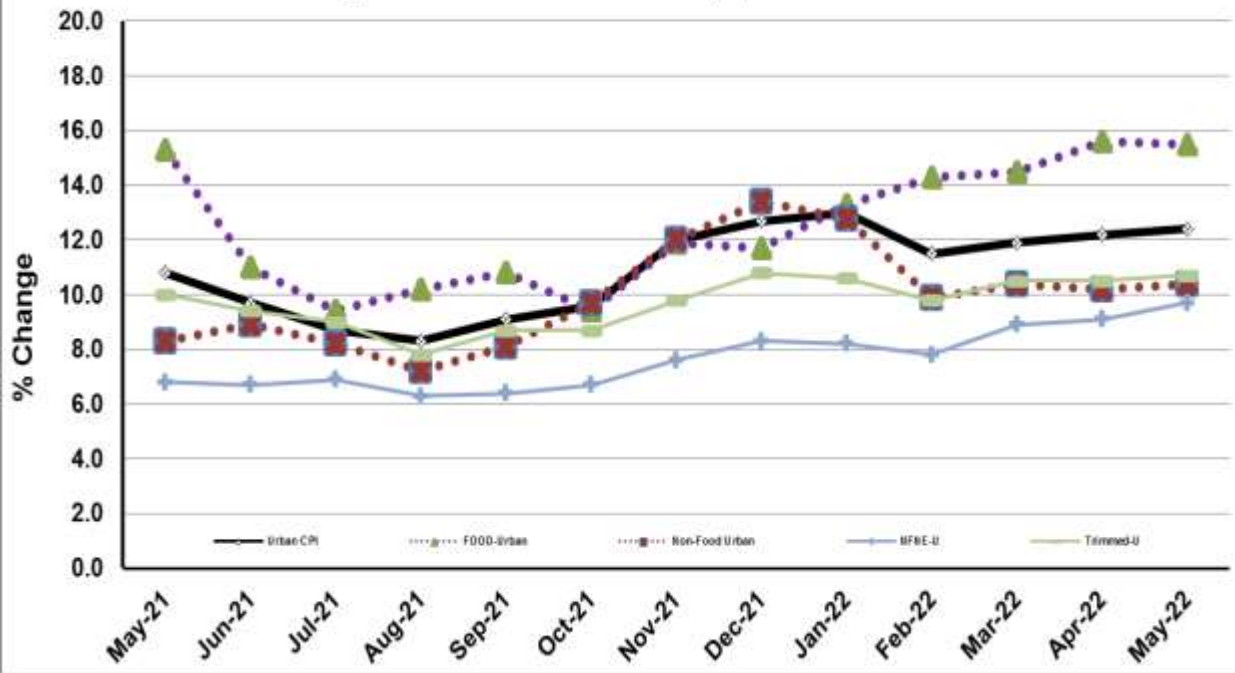


Figure 2: Rural Inflation - YoY, Special Indices

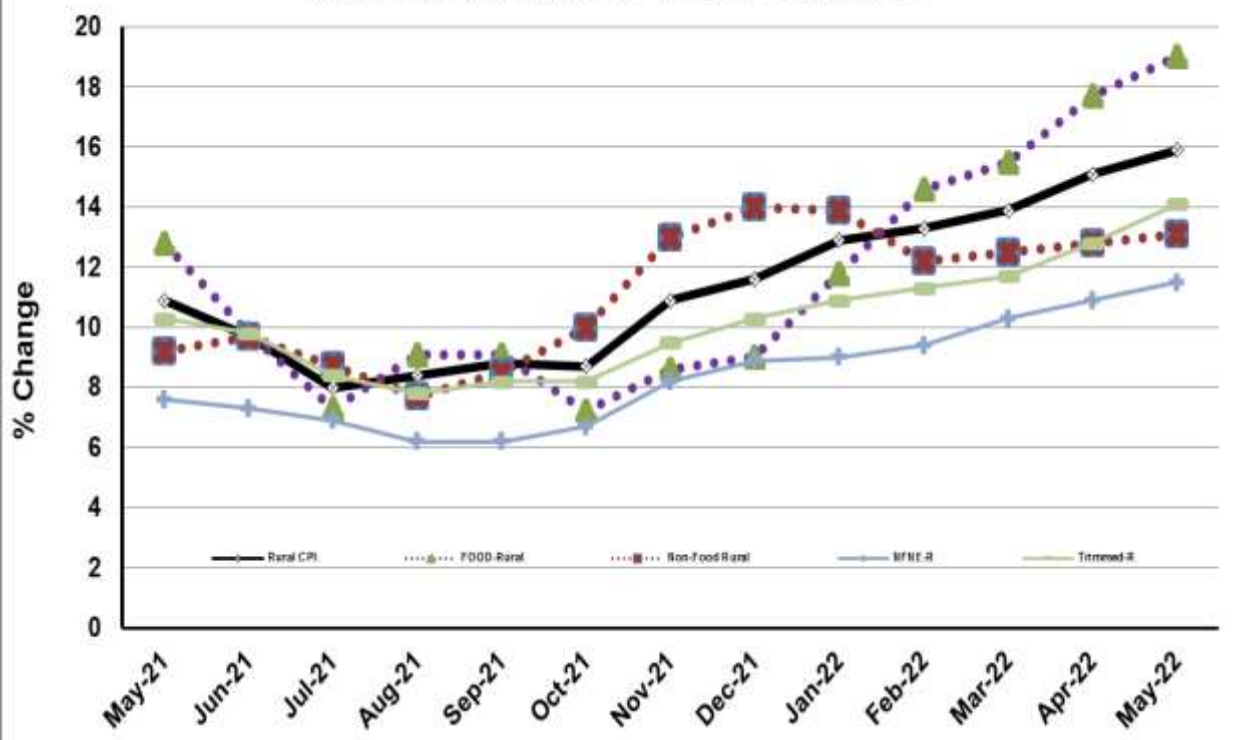


Figure 3: UCPI Inflation MoM, Special Indices

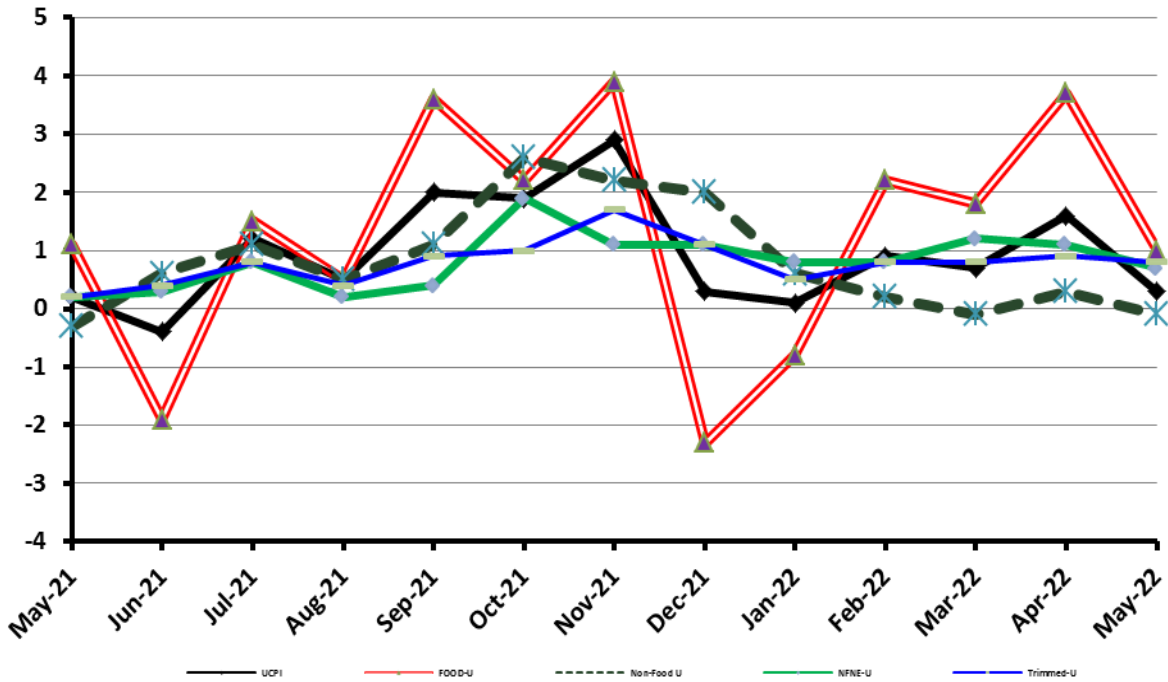


Figure 4: RPI Inflation MoM, Special Indices

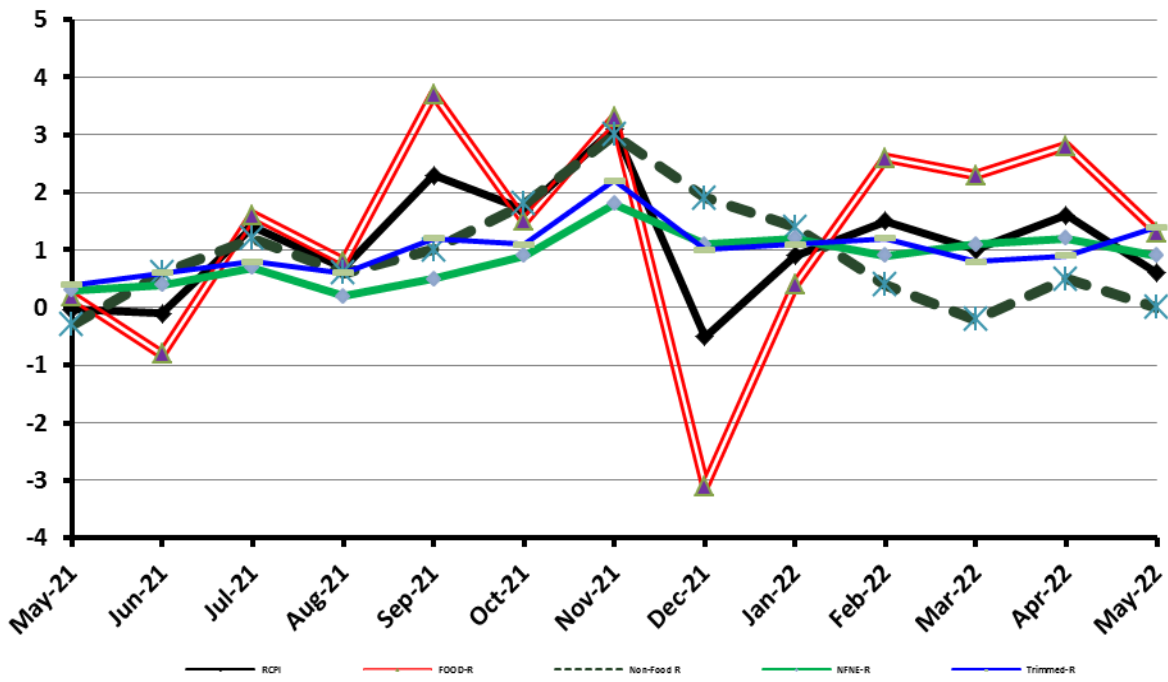


Figure 5: CPI Y.o.Y (National, Urban, Rural)

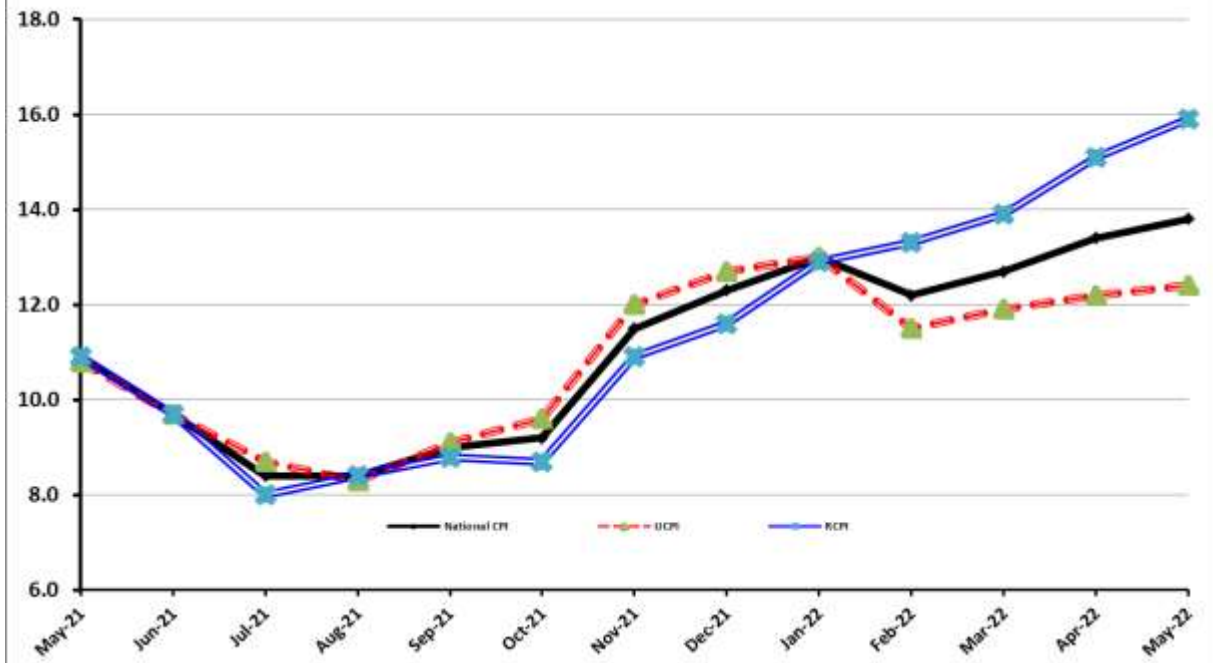
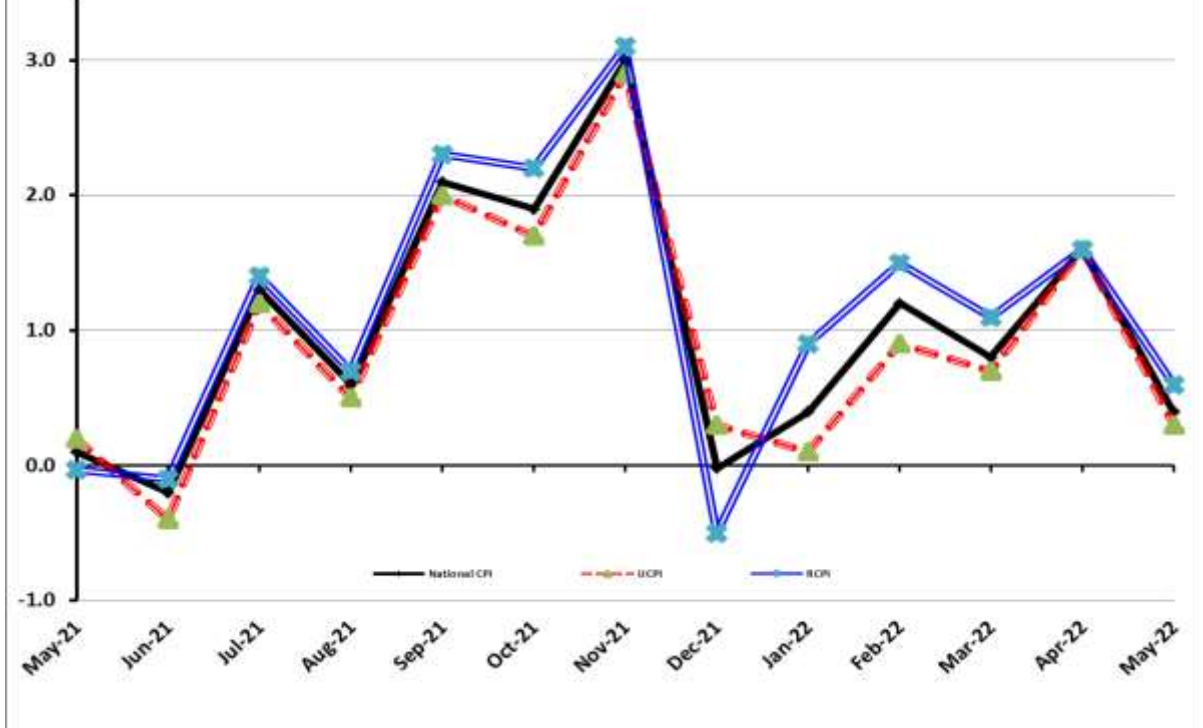


Figure 6: CPI M.o.M (National, Urban, Rural)



I. National Consumer Price Index (N-CPI)

The **National Consumer Price Index** for **May 2022** is **increased** by 0.44% over **April 2022** and increased by 13.76% over corresponding month of the last year i.e. **May 2021**.

Table 1: Consumer Price Index (National) by Group of Commodities and Services (Base 2015-16)									
No	Group	Group Weight (%)	Indices			% Change May 2022 Over		Impact (In % points) May 2022 Over	
			May 22	Apr 22	May 21	Apr 22	May 21	Apr 22	May 21
	General	100.00	165.23	164.50	145.24	0.44	13.76	0.44	13.76
1.	Food & Non-alcoholic Bev.	34.58	177.90	176.38	151.72	0.86	17.25	0.32	6.23
	<i>Non-perishable Food Items</i>	29.60	179.59	174.41	154.90	2.97	15.94	0.93	5.03
	<i>Perishable Food Items</i>	4.99	167.84	188.08	132.81	-10.76	26.37	-0.61	1.20
2.	Alcoholic Bev. & Tobacco	1.02	159.13	151.66	144.50	4.93	10.13	0.05	0.10
3.	Clothing & Footwear	8.60	165.72	164.58	148.91	0.69	11.29	0.06	1.00
4.	Housing, Water, Electricity, Gas & Fuels	23.63	147.64	151.16	139.49	-2.33	5.84	-0.51	1.33
5.	Furnishing & Household Equipment Maintenance	4.10	163.87	160.97	141.13	1.80	16.11	0.07	0.64
6.	Health	2.79	169.25	168.44	153.03	0.48	10.59	0.01	0.31
7.	Transport	5.91	186.61	181.63	141.62	2.74	31.77	0.18	1.83
8.	Communication	2.21	110.52	110.36	108.61	0.14	1.75	0.00	0.03
9.	Recreation & Culture	1.59	141.10	137.25	125.67	2.80	12.28	0.04	0.17
10.	Education	3.79	158.28	156.70	144.61	1.01	9.45	0.04	0.36
11.	Restaurants & Hotels	6.92	165.12	162.18	142.37	1.82	15.98	0.12	1.08
12.	Miscellaneous	4.87	172.08	170.08	151.85	1.18	13.32	0.06	0.68

II. Urban Consumer Price Index (UCPI)

The Urban Consumer Price Index for **May 2022** is increased by 0.31% over **April 2022** and increased by 12.36% over corresponding month of the last year i.e. **May 2021**.

Table 2: Consumer Price Index (Urban) by Group of Commodities and Services (Base 2015-16)

No	Group	Group Weight (%)	Indices			% Change May 2022 Over		Impact (In % points) May 2022 Over	
			May 22	Apr 22	May 21	Apr 22	May 21	Apr 22	May 21
	General	100.00	163.13	162.63	145.19	0.31	12.36	0.31	12.36
1.	Food & Non-alcoholic Bev.	30.42	177.05	175.41	152.94	0.93	15.76	0.31	5.05
	<i>Non-perishable Food Items</i>	25.97	178.69	173.28	155.36	3.12	15.02	0.86	4.17
	<i>Perishable Food Items</i>	4.46	167.49	187.81	138.85	-10.82	20.63	-0.56	0.88
2.	Alcoholic Bev.& Tobacco	0.85	168.24	160.86	153.81	4.59	9.38	0.04	0.08
3.	Clothing & Footwear	8.01	162.38	161.57	146.36	0.50	10.95	0.04	0.88
4.	Housing, Water, Electricity, Gas & Fuels	27.03	146.71	150.11	140.52	-2.27	4.41	-0.57	1.15
5.	Furnishing & Household Equip. & Maintenance	4.09	161.43	158.29	140.17	1.98	15.17	0.08	0.60
6.	Health	2.31	169.14	168.50	153.41	0.38	10.25	0.01	0.25
7.	Transport	6.14	188.65	183.31	142.67	2.91	32.23	0.20	1.94
8.	Communication	2.35	112.82	112.58	110.33	0.21	2.26	0.00	0.04
9.	Recreation & Culture	1.73	136.64	132.71	122.15	2.96	11.86	0.04	0.17
10.	Education	4.88	161.96	160.26	146.71	1.06	10.39	0.05	0.51
11.	Restaurants & Hotels	7.41	162.26	161.24	141.66	0.63	14.54	0.05	1.05
12.	Miscellaneous	4.77	170.38	168.57	151.81	1.07	12.23	0.05	0.61

Main contributors to month-on-month and year-on-year percentage changes are given below and detail is given in **Annexure-A**.

1. MONTH-ON-MONTH Top few commodities which varied from previous month are given below:

FOOD

Increased: Onions (36.17%), Chicken (16.98%), Eggs (13.07%), Wheat flour (10.51%), Gram Whole (6.68%), Pulse Masoor (5.96%), Meat (3.98%), Rice (3.40%), Pulse Mash (2.43%), Wheat (2.06%), Mustard Oil (1.93%), Pulse Gram (1.59%) and Pulse Moong (1.28%).

Decreased: Tomatoes (37.73%), Vegetables (15.26%), Fruits (12.94%), Sugar (2.05%) and Condiments & Spices (1.58%).

NON-FOOD

Increased: Stationery (8.00%), Plastic Products (4.75%), Motor Vehicles (3.30%), Cleaning & Laundering (3.26%), Motor Fuel (3.19%), Furniture & Furnishing (2.46%), Washing Soap/Detergents/Match Box (2.19%), Household Equipments (2.05%), Motor Vehicle Accessories (2.01%) and Tailoring (1.35%).

Decreased: Electricity Charges (15.46%)

YEAR-ON-YEAR: Top few commodities which varied from corresponding month of previous year i.e. May, 2021 are given below:

FOOD

Increased: Tomatoes (162.22%), Onions (153.44%), Cooking Oil (60.05%), Vegetable Ghee (58.7%), Mustard Oil (56.76%), Pulse Masoor (50.33%), Gram whole (39.56%), Meat (24.79%), Vegetables (24.42%), Wheat Flour (19.17%), Wheat (18.42%) and Besan (14.30%).

Decreased: Pulse Moong (24.03%), Potatoes (21.6%), Condiments & Spices (17.50%) and Sugar (13.74%).

NON-FOOD

Increased: Liquefied Hydrocarbons (103.09%), Motor Fuel (44.35%), Cleaning & Laundering (27.44%), Stationery (21.37%), Motor Vehicles (19.74%), Washing Soap/Detergents/Match Box (18.71%), Motor vehicle accessories (17.01%), Household Equipments (16.77%), Plastic Products (16.28%) and Construction input Items (13.25%).

Decreased: Electricity Charges (11.81%).

III. Rural Consumer Price Index (RCPI)

The Rural Consumer Price Index for May 2022 is increased by 0.65% over April 2022 and increased by 15.88% over corresponding month of the last year i.e. May 2021.

Table 3: Consumer Price Index (Rural) by Group of Commodities and Services (Base 2015-16)

No	Group	Group Weight (%)	Indices			% Change May 2022 Over		Impact (In % points) May 2022 Over	
			May 22	Apr 22	May 21	Apr 22	May 21	Apr 22	May 21
	General	100.00	168.39	167.31	145.32	0.65	15.88	0.65	15.88
1.	Food & Non-alcoholic Bev.	40.87	178.85	177.47	150.35	0.78	18.96	0.34	8.02
	<i>Non-perishable Food Items</i>	35.08	180.60	175.67	154.39	2.81	16.98	1.03	6.32
	<i>Perishable Food Items</i>	5.79	168.25	188.40	125.80	-10.70	33.74	-0.70	1.69
2.	Alcoholic Bev. & Tobacco	1.28	149.95	142.38	135.11	5.32	10.98	0.06	0.13
3.	Clothing & Footwear	9.48	169.98	168.42	152.15	0.93	11.72	0.09	1.16
4.	Housing, Water, Electricity, Gas & Fuels	18.49	149.69	153.48	137.22	-2.47	9.09	-0.42	1.59
5.	Furnishing & Household Equip. & Maintenance	4.10	167.54	165.00	142.57	1.54	17.51	0.06	0.71
6.	Health	3.51	169.35	168.39	152.66	0.57	10.93	0.02	0.40
7.	Transport	5.56	183.22	178.83	139.88	2.45	30.98	0.15	1.66
8.	Communication	1.99	106.42	106.41	105.56	0.01	0.81	0.00	0.01
9.	Recreation & Culture	1.38	149.55	145.86	132.34	2.53	13.00	0.03	0.16
10.	Education	2.13	145.58	144.42	137.36	0.80	5.98	0.01	0.12
11.	Restaurants & Hotels	6.19	170.29	163.87	143.66	3.92	18.54	0.24	1.13
12.	Miscellaneous	5.02	174.53	172.25	151.91	1.32	14.89	0.07	0.78

Main contributors to Month-on-Month and Year-on-Year percentage changes are given below and detail is given in **Annexure-B**.

1. MONTH-ON-MONTH Top few commodities which varied from previous month are given below:

FOOD

Increased: Onions (28.60%), Chicken (17.73%), Eggs (10.48%), Gram Whole (8.33%), Potatoes (6.95%), Wheat Flour (5.28%), Mustard Oil (5.16%), Pulse Masoor (4.56%), Meat (3.13%), Pulse Gram (2.79%), Pulse Mash (2.48%), Rice (2.33%), Milk (2.05%) and Cooking Oil (1.67%).

Decreased: Tomatoes (50.78%), Vegetables (20.05%), Fruits (1.68%), Sugar (1.63%) and Condiments & Spices (0.47%).

NON-FOOD

Increased: Motor Vehicles Accessories (3.64%), Motor Fuels (3.15%), Readymade Garments (3.01%), Stationery (2.75%), Major Tools & Equipments (2.44%), Furniture & Furnishing (2.40%), Household Equipments (2.28%) and Tailoring (2.15%).

Decreased: Electricity Charges (15.46%).

2. YEAR-ON-YEAR: Top few commodities which varied from corresponding month of previous year i.e. May 2021 are given below:

FOOD

Increased: Onions (151.37%), Tomatoes (147.73%), Mustard Oil (62.14%), Cooking Oil (61.15%), Vegetable Ghee (59.87%), Pulse Masoor (52.88%), Gram Whole (48.6%), Vegetables (39.29%), Fruits (27.71%), Meat (22.87%), Wheat (22.25%), Beans (21.22%), Wheat Flour (20.15%) and Besan (16.58%).

Decreased: Pulse Moong (25.24%), Potatoes (21.31%), Condiments & Spices (14.63%) and Sugar (13.13%).

NON-FOOD

Increased: Liquefied Hydrocarbons (77.74%), Motor Fuels (43.73%), Cleaning & Laundering (22.08%), Motor Vehicles Accessories (20.93%), Washing Soaps/Detergents/Match Box (20.49%), Construction Input Items (18.79%), Major Tools & Equipments (18.11%), Hosiery (17.84%), Furniture & Furnishing (17.33%) and Stationery (15.30%).

Decreased: Decreased: Electricity Charges (11.81%).

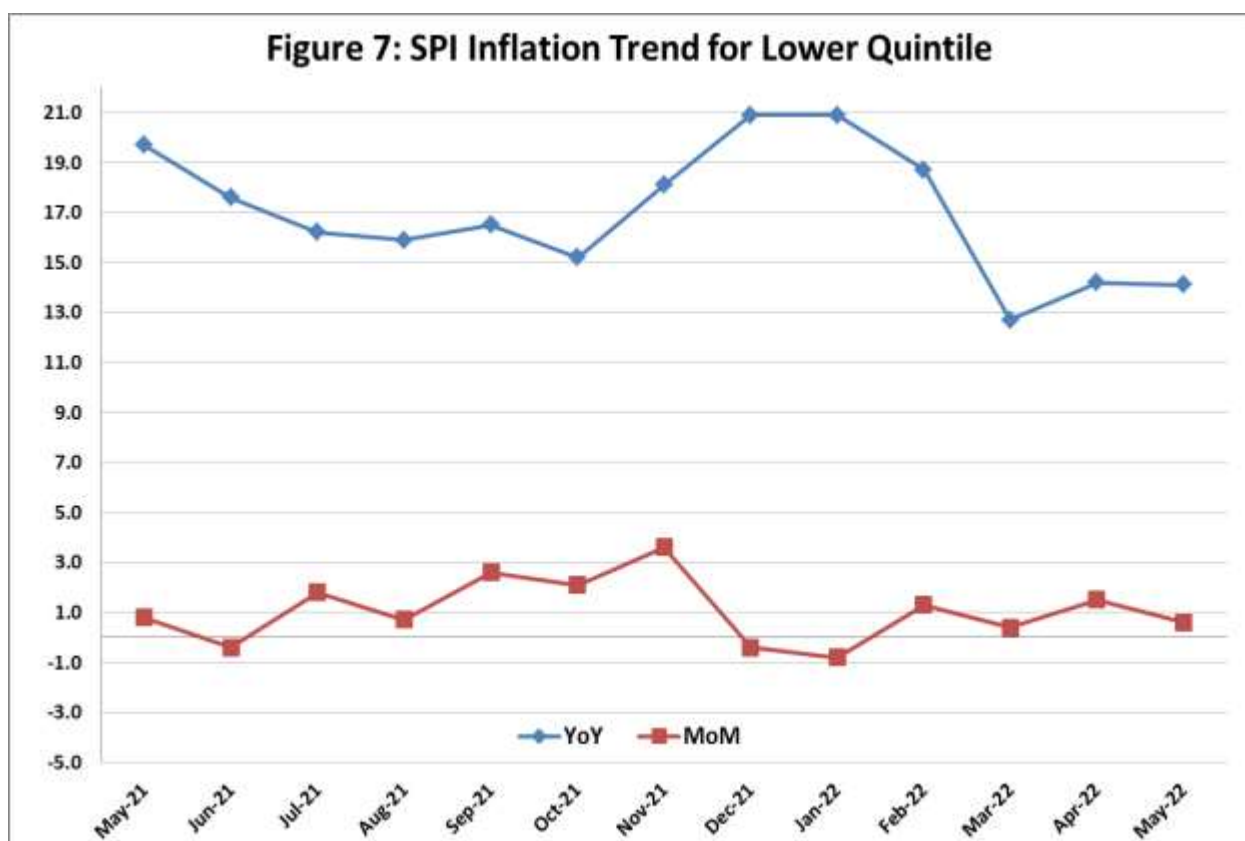
IV. Sensitive Price Indicator

Quintile-wise percentage changes YoY and MoM are given below in Table 4. The series from May 2021 to May 2022 is also graphed below in Figure 7.

Table 4: Sensitive Price Indicator (Base 2015-16)					
Quintiles	Indices			% Change May 2022 Over	
	May 22	Apr 22	May 21	Apr 22	May 21
1	182.59	181.42	160.09	0.64	14.05
2	171.81	171.34	150.06	0.27	14.49
3	175.01	173.60	151.47	0.81	15.54
4	172.22	170.42	148.11	1.06	16.28
5	175.02	173.90	149.36	0.64	17.18
Combined	173.38	172.44	149.36	0.55	16.08

Table 4.1 : Weekly Percentage Change of SPI During May - 2022				
Quintiles	% Change with Previous week			
	05-05-2022*	12-05-2022	19-05-2022	26-05-2022
Quintile 1	NIL	0.94	1.46	-0.38
Combined	NIL	0.49	1.42	-0.26

*SPI dated May 05, 2022 could not be prepared on account of Eid Holidays.



V. Wholesale Price Index

The Wholesale Price Index for May, 2022 increased by 1.44% over April, 2022. It increased by 29.61% over the corresponding month of the last year i.e. May, 2021. YoY and MoM movements, from May, 2021 to May, 2022 are also graphed below in Figure 8.

Table 5: Wholesale Price Index by Group of Commodities (Base 2015-16)

No	Group	Group Weight (%)	Indices			% Change May 2022 Over		Impact (In % points) May 2022 Over	
			May 22	Apr 22	May 21	Apr 22	May 21	Apr 22	May 21
	General	100.00	210.79	207.79	162.64	1.44	29.61	1.44	29.61
1	Agriculture Forestry & Fishery	25.77	215.48	213.73	166.79	0.82	29.19	0.22	7.71
2	Ores/Minerals, Elec., Gas & Water	12.01	182.43	189.70	165.94	-3.83	9.94	-0.42	1.22
3	Food, Beverages, Tobacco, Textiles & Leather Products	31.11	186.11	184.28	159.26	0.99	16.86	0.27	5.14
	i. Food Products, Beverages & Tobacco	20.07	182.93	180.13	154.57	1.55	18.35	0.27	3.50
	ii. Textiles & Apparels	10.33	196.18	196.14	171.11	0.02	14.65	0.00	1.59
	iii. Leather Products	0.71	129.63	129.02	119.35	0.47	8.61	0.00	0.04
4	Other Transportable Goods	22.40	263.09	249.95	162.47	5.26	61.93	1.42	13.86
5	Metal Product, Machinery & Equipment	8.72	189.70	190.74	158.28	-0.55	19.85	-0.04	1.68

Main contributors to month-on-month and year-on-year percentage changes are given below and detail is given in **Annexure-C**.

1. MONTH-ON-MONTH: Top few commodities which varied from previous month are given below:

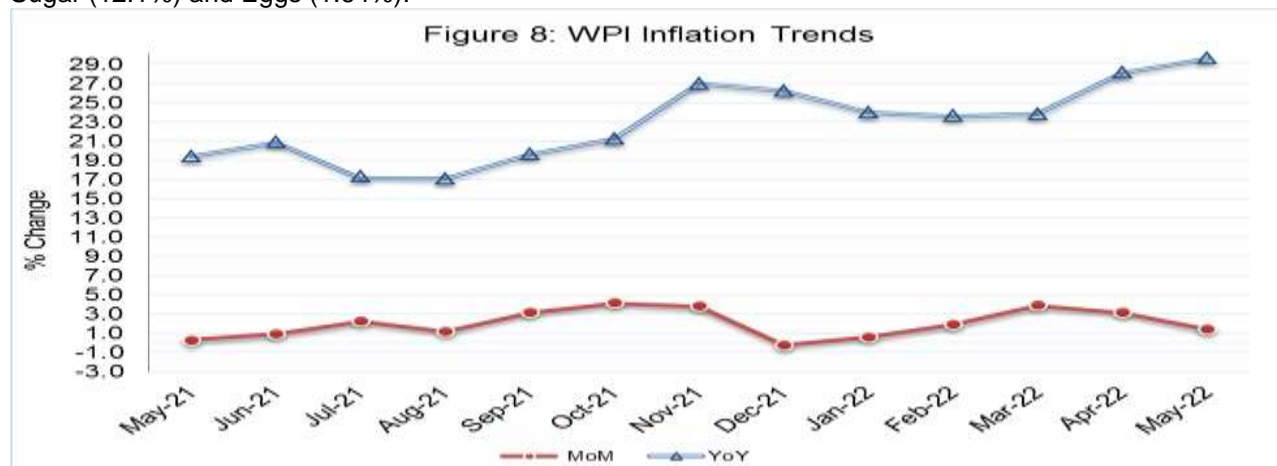
Increased: Concrete Mixture (20.00%), Poultry (17.75%), Bed Foam (15.98%), Eggs (12.79%), Pulses (12.70%), Matches (11.14%), Bajra (9.61%), Furnace Oil (9.33%), Chuff Cutter (7.81%), Maize (7.76%), Pipe Fittings (7.7%), Lathe Machines (7.61%), Air Conditioners (7.42%), Wheat Flour (7.18%), Auto Tires (6.74%), Rice (5.76%), Chemicals (5.60%), Cotton Seeds (5.51%), Fibre Crops (4.18%), Soaps & Detergents (3.89%), Kerosene Oil (3.86%), Diesel (3.84%), Motor Spirit (3.34%), Wheat (3.26%), Mobil Oil (3.10%), Motor Vehicles (2.36%), Fertilizers (1.73%) and Meat (1.66%).

Decreased: Fruits (24.29%), Vegetables (14.05%), Electrical Energy (9.09%), Steel Bar & Sheets (4.90%), Potatoes (4.27%) and Sugar (1.30%).

2. YEAR-ON-YEAR: Top few commodities which varied from previous year are given below:

Increased: Furnace Oil (126.78%), Chuff Cutter (115.61%), Concrete Mixture (95.88%), Fibre Crops (83.75%), Vegetables (71.16%), Chemicals (69.17%), Cultivators (68.18%), Vegetable Ghee (65.97%), Oil Seeds (65.22%), Kerosene Oil (63.01%), Coal (57.42%), Fertilizers (50.91%), Diesel (48.3%), Bed Foam (48.01%), Motor Spirit (46.34%), Air Conditioners (42.55%), Vegetable Oil (42.03%), Steel Bar & Sheets (41.73%), Pipe Fittings (36.13%), Cement (36.12%), Pulses (34.4%), Lathe Machines (33.49%), Tractors (30.77%), Auto Tires (27.14%), Motorcycles (25.96%), Wheat (19.91%), Soaps & Detergents (19.61%), Wheat Flour (19.60%), Mobil Oil (18.34%), Motor Vehicles (18.21%) and Meat (17.68%).

Decreased: Spices (35.74%), Potatoes (32.86%), Stimulant & Spice Crops (31.29%), Fruits (12.25%), Sugar (12.1%) and Eggs (1.64%).



Annexure A:CPI (Urban) Index Numbers by Commodity Groups & Commodities (2015-16=100)

Item and Specification	Weight	Index Numbers			% Change in May 2022 over			
		May 22	Apr 22	May 21	Apr 2022	May 2021		
General	100.0000	163.13	162.63	145.19	+	0.31	+	12.36
Food and non-alcoholic Bevera	30.4215	177.05	175.41	152.94	+	0.93	+	15.76
01 Wheat	0.6120	179.98	176.35	151.98	+	2.06	+	18.42
02 Wheat flour	3.0075	178.31	161.35	149.63	+	10.51	+	19.17
03 Wheat products	0.0936	185.02	174.78	159.69	+	5.86	+	15.86
04 Besan	0.0830	143.34	141.73	125.41	+	1.14	+	14.30
05 Rice	1.1804	163.93	158.54	144.34	+	3.40	+	13.57
06 Bakery and confectionary	0.4770	169.04	167.09	147.58	+	1.17	+	14.54
07 Nimco	0.1224	182.03	176.76	142.81	+	2.98	+	27.46
08 Meat	2.0411	209.16	201.16	167.61	+	3.98	+	24.79
09 Chicken	1.3631	219.04	187.24	216.74	+	16.98	+	1.06
10 Fish	0.3855	123.28	123.29	115.33	-	0.01	+	6.89
11 Milk fresh	7.1070	158.36	157.43	140.61	+	0.59	+	12.62
12 Milk products	0.6407	161.39	160.82	144.80	+	0.35	+	11.46
13 Milk powder	0.3106	156.94	155.31	138.07	+	1.05	+	13.67
14 Eggs	0.5083	174.09	153.97	168.95	+	13.07	+	3.04
15 Butter	0.0932	226.27	226.20	193.07	+	0.03	+	17.20
16 Mustard oil	0.0120	257.61	252.73	164.33	+	1.93	+	<u>56.76</u>
17 Cooking oil	1.1016	279.49	279.33	174.63	+	0.06	+	<u>60.05</u>
18 Vegetable ghee	1.0324	289.68	289.34	182.53	+	0.12	+	<u>58.70</u>
19 Dry fruits	0.3299	152.10	152.07	139.93	+	0.02	+	8.70
20 Fresh fruits	1.4363	181.50	208.47	176.39	-	12.94	+	2.90
21 Pulse masoor	0.1624	159.82	150.83	106.31	+	5.96	+	<u>50.33</u>
22 Pulse moong	0.1697	110.93	109.53	146.01	+	1.28	-	24.03
23 Pulse mash	0.1152	121.59	118.70	112.46	+	2.43	+	8.12
24 Pulse gram	0.1660	141.23	139.02	124.31	+	1.59	+	13.61
25 Gram whole	0.0912	181.02	169.68	129.71	+	6.68	+	39.56
26 Beans	0.0408	181.45	183.16	159.79	-	0.93	+	13.56
27 Potatoes	0.4496	149.75	150.35	191.01	-	0.40	-	21.60
28 Onions	0.5928	175.43	128.83	69.22	+	36.17	+	<u>153.4</u>
29 Tomatoes	0.3459	172.59	277.17	65.82	-	37.73	+	<u>162.2</u>
30 Fresh vegetables	1.5306	155.92	183.99	125.32	-	15.26	+	24.42
31 Sugar	1.1130	137.49	140.37	159.39	-	2.05	-	13.74
32 Gur	0.0379	154.87	158.84	147.35	-	2.50	+	5.10
33 Honey	0.1017	156.31	156.31	131.29	+	0.00	+	19.06
34 Sweetmeat	0.3535	190.83	186.64	152.82	+	2.24	+	24.87
35 Ice cream	0.1044	148.05	147.88	142.53	+	0.11	+	3.87
36 Condiments and Spices	1.3340	173.95	176.74	210.85	-	1.58	-	17.50
37 Dessert preparation	0.0419	145.38	141.58	131.78	+	2.68	+	10.32
38 Tea	0.8427	158.99	158.76	140.84	+	0.14	+	12.89
39 Beverages	0.8906	142.94	140.58	131.05	+	1.68	+	9.07
Alcoholic Beverages, Tobacco	0.8540	168.24	160.86	153.81	+	4.59	+	9.38
40 Cigarettes	0.7167	154.18	147.28	141.09	+	4.68	+	9.28
41 Pan prepared	0.1373	241.63	231.75	220.20	+	4.26	+	9.73
Clothing and footwear	8.0096	162.38	161.57	146.36	+	0.50	+	10.95
42 Cotton cloth	2.2227	169.04	168.87	150.21	+	0.10	+	12.54
43 Woolen cloth	0.8361	154.44	154.28	141.18	+	0.10	+	9.39
44 Readymade garments	1.3196	150.30	148.41	138.92	+	1.27	+	8.19
45 Woolen readymade garments	0.4307	159.54	159.54	142.21	+	0.00	+	12.19
46 Tailoring	1.0741	168.69	166.44	150.71	+	1.35	+	11.93
47 Hosiery	0.4070	161.93	161.47	143.63	+	0.28	+	12.74
48 Dupatta	0.1713	140.55	139.66	129.91	+	0.64	+	8.19
49 Cleaning and laundering	0.0665	188.90	182.94	148.23	+	3.26	+	27.44
50 Footwear	1.4816	165.34	165.10	150.75	+	0.15	+	9.68
Housing, water, Elec., Gas an	27.0332	146.71	150.11	140.52	-	2.27	+	4.41
51 House rent	19.2558	145.80	145.80	138.09	+	0.00	+	5.58
52 Construction input items	0.3765	173.48	172.11	153.18	+	0.80	+	13.25
53 Construction wage rates	0.2025	170.65	169.46	155.01	+	0.70	+	10.09
54 Water supply	0.5269	166.58	165.01	158.39	+	0.95	+	5.17
55 Garbage collection	0.1064	196.32	183.11	173.90	+	7.21	+	12.89
56 Electricity charges	4.5562	116.08	137.30	131.62	-	15.46	-	11.81
57 Gas charges	1.0807	216.94	216.94	216.94	+	0.00	+	0.00
58 Liquefied Hydrocarbons	0.5064	255.45	252.12	125.78	+	1.32	+	<u>103.0</u>
59 Solid Fuel	0.4218	135.73	135.65	120.56	+	0.06	+	12.58

Annexure A:CPI (Urban) Index Numbers by Commodity Groups & Commodities (2015-16=100)

Item and Specification	Weight	Index Numbers			% Change in May 2022 over			
		May 22	Apr 22	May 21	Apr 2022	May 2021		
<i>Furnishing and household equi</i>	4.0937	161.43	158.29	140.17	+	1.98	+	15.17
60 Furniture and furnishing	0.4750	159.48	155.65	141.22	+	2.46	+	12.93
61 Carpets	0.0308	122.02	121.93	113.24	+	0.07	+	7.75
62 Household textiles	0.3420	143.16	142.81	135.27	+	0.25	+	5.83
63 Household equipments	1.0032	165.49	162.17	141.72	+	2.05	+	16.77
64 Plastic products	0.0536	142.57	136.10	122.61	+	4.75	+	16.28
65 Major tools & equipments	0.0084	162.15	158.97	138.51	+	2.00	+	17.07
66 Washing soap/detergents/match	1.4112	171.15	167.48	144.18	+	2.19	+	18.71
67 Household servant	0.7695	150.52	147.88	134.66	+	1.79	+	11.78
<i>Health</i>	2.3098	169.14	168.50	153.41	+	0.38	+	10.25
68 Drugs and medicines	1.0735	171.90	170.76	154.25	+	0.67	+	11.44
69 Therapeutic Appliances and Eq	0.0054	122.89	122.88	116.60	+	0.01	+	5.39
70 Doctor (MBBS) clinic fee	0.4044	210.21	209.76	190.81	+	0.21	+	10.17
71 Dental services	0.0156	136.79	136.13	128.73	+	0.48	+	6.26
72 Medical tests	0.2367	146.03	145.80	134.08	+	0.16	+	8.91
73 Hospitals services	0.5742	145.92	145.87	134.49	+	0.03	+	8.50
<i>Transport</i>	6.1368	188.65	183.31	142.67	+	2.91	+	32.23
74 Motor vehicles	0.8097	184.89	178.98	154.41	+	3.30	+	19.74
75 Motor vehicle accessories	0.1941	165.75	162.49	141.66	+	2.01	+	17.01
76 Motor fuel	2.9088	217.13	210.42	150.42	+	3.19	+	44.35
77 Mechanical services	0.4290	158.26	156.50	137.66	+	1.12	+	14.96
78 Motor vehicle tax	0.0482	136.37	136.37	126.72	+	0.00	+	7.62
79 Transport services	1.7470	154.43	150.38	126.12	+	2.69	+	22.45
<i>Communication</i>	2.3536	112.82	112.58	110.33	+	0.21	+	2.26
80 Postal services	0.0190	164.62	164.62	162.27	+	0.00	+	1.45
81 Communication apparatus	0.4524	130.82	129.57	119.49	+	0.96	+	9.48
82 Communication Services	1.8822	107.97	107.97	107.61	+	0.00	+	0.33
<i>Recreation and culture</i>	1.7301	136.64	132.71	122.15	+	2.96	+	11.86
83 Recreation and culture	0.6478	119.49	118.24	113.75	+	1.06	+	5.05
84 Text books	0.6655	137.89	135.67	121.19	+	1.64	+	13.78
85 Newspapers	0.0716	156.62	151.55	151.55	+	3.35	+	3.35
86 stationery	0.3452	162.27	150.25	133.70	+	8.00	+	21.37
<i>Education</i>	4.8807	161.96	160.26	146.71	+	1.06	+	10.39
87 Education	4.8807	161.96	160.26	146.71	+	1.06	+	10.39
<i>Restaurants and hotels</i>	7.4050	162.26	161.24	141.66	+	0.63	+	14.54
88 Readymade food	5.5235	165.10	163.75	143.50	+	0.82	+	15.05
89 Marriage Hall Charges	1.7514	156.23	156.21	137.97	+	0.01	+	13.23
90 Accommodation Services	0.1301	122.77	122.69	113.20	+	0.07	+	8.45
<i>Misc. goods and services</i>	4.7720	170.38	168.57	151.81	+	1.07	+	12.23
91 Personal Grooming Services	0.8001	153.18	152.74	138.14	+	0.29	+	10.89
92 Electrical Appliances for Per	0.0465	134.54	133.85	118.48	+	0.52	+	13.56
93 Appliances/Articles/Products	2.9807	157.63	155.48	142.85	+	1.38	+	10.35
94 Personal Effects n.e.c.	0.9447	226.92	224.96	193.32	+	0.87	+	17.38

Annexure B:CPI (Rural) Index Numbers by Commodity Groups & Commodities (2015-16=100)

Item and Specification	Weight	Index Numbers			% Change in May 2022 over	
		May 22	Apr 22	May 21	Apr 2022	May 2021
General	100.0000	168.39	167.31	145.32	+ 0.65	+ 15.88
Food and non-alcoholic Bevera	40.8668	178.85	177.47	150.35	+ 0.78	+ 18.96
01 Wheat	3.4736	180.62	177.84	147.75	+ 1.56	+ 22.25
02 Wheat Flour	3.4297	178.77	169.80	148.79	+ 5.28	+ 20.15
03 Wheat Products	0.1068	169.40	168.15	148.35	+ 0.74	+ 14.19
04 Besan	0.0728	149.21	148.00	127.99	+ 0.82	+ 16.58
05 Rice	1.5501	211.37	206.56	186.09	+ 2.33	+ 13.58
06 Bakery and Confectionary	0.3702	174.36	171.16	143.64	+ 1.87	+ 21.39
07 Nimco	0.0774	168.92	162.59	131.13	+ 3.89	+ 28.82
08 Meat	1.7146	208.95	202.60	170.06	+ 3.13	+ 22.87
09 Chicken	1.4641	227.91	193.58	224.65	+ 17.73	+ 1.45
10 Fish	0.2640	138.34	138.65	125.47	- 0.22	+ 10.26
11 Milk fresh	10.3803	152.19	149.14	133.40	+ 2.05	+ 14.09
12 Milk products	0.9624	150.15	146.30	132.31	+ 2.63	+ 13.48
13 Milk powder	0.1062	135.81	135.75	128.28	+ 0.04	+ 5.87
14 Eggs	0.5665	165.72	150.00	164.52	+ 10.48	+ 0.73
15 Butter	0.3333	175.10	169.85	145.69	+ 3.09	+ 20.19
16 Mustard oil	0.0136	268.13	254.98	165.37	+ 5.16	+ <u>62.14</u>
17 Cooking oil	0.6011	313.83	308.68	194.74	+ 1.67	+ <u>61.15</u>
18 Vegetable ghee	2.3764	319.39	315.21	199.78	+ 1.33	+ <u>59.87</u>
19 Dry fruits	0.2496	174.33	174.49	155.92	- 0.09	+ 11.81
20 Fresh fruits	1.4505	214.61	218.28	168.04	- 1.68	+ 27.71
21 Pulse Masoor	0.2076	171.38	163.91	112.10	+ 4.56	+ <u>52.88</u>
22 Pulse Moong	0.2510	115.67	113.84	154.72	+ 1.61	- 25.24
23 Pulse Mash	0.1465	120.08	117.17	111.60	+ 2.48	+ 7.60
24 Pulse Gram	0.2751	143.41	139.52	125.90	+ 2.79	+ 13.91
25 Gram Whole	0.1116	188.22	173.74	126.66	+ 8.33	+ 48.60
26 Beans	0.0896	204.13	204.18	168.39	- 0.02	+ 21.22
27 Potatoes	0.7437	163.03	152.44	207.18	+ 6.95	- 21.31
28 Onions	0.8965	161.88	125.88	64.40	+ 28.60	+ <u>151.3</u>
29 Tomatoes	0.5069	142.84	290.22	57.66	- <u>50.78</u>	+ <u>147.7</u>
30 Fresh Vegetables	2.0947	146.85	183.68	105.43	- 20.05	+ 39.29
31 Sugar	2.0296	138.73	141.03	159.69	- 1.63	- 13.13
32 Gur	0.1522	148.18	147.68	146.81	+ 0.34	+ 0.93
33 Honey	0.0296	160.95	160.95	135.70	+ 0.00	+ 18.61
34 Sweetmeat	0.3967	171.93	167.99	138.89	+ 2.35	+ 23.79
35 Ice Cream	0.0568	147.61	145.04	140.13	+ 1.77	+ 5.34
36 Condiments and Spices	1.4919	159.78	160.54	187.17	- 0.47	- 14.63
37 Dessert Preparation	0.0133	141.40	141.17	132.10	+ 0.16	+ 7.04
38 Tea	1.2566	156.32	155.59	138.10	+ 0.47	+ 13.19
39 Beverages	0.5537	142.83	141.05	132.90	+ 1.26	+ 7.47
Alcoholic Beverages, Tobacco	1.2786	149.95	142.38	135.11	+ 5.32	+ 10.98
40 Cigarettes	1.2364	148.17	140.55	133.73	+ 5.42	+ 10.80
41 Pan Prepared	0.0422	202.12	195.89	175.70	+ 3.18	+ 15.04
Clothing and footwear	9.4826	169.98	168.42	152.15	+ 0.93	+ 11.72
42 Cotton Cloth	2.8381	187.68	187.06	168.18	+ 0.33	+ 11.59
43 Woolen Cloth	1.0959	159.63	158.92	143.17	+ 0.45	+ 11.50
44 Readymade Garments	1.1345	163.66	158.88	143.13	+ 3.01	+ 14.34
45 Woolen Readymade Garments	0.5401	164.85	164.85	143.31	+ 0.00	+ 15.03
46 Tailoring	1.2999	166.78	163.27	150.56	+ 2.15	+ 10.77
47 Hosiery	0.4322	214.59	212.19	182.11	+ 1.13	+ 17.84
48 Dupatta	0.2078	158.40	157.04	139.40	+ 0.87	+ 13.63
49 Cleaning and Laundering	0.0176	173.01	169.86	141.72	+ 1.85	+ 22.08
50 Footwear	1.9165	148.22	147.74	137.18	+ 0.32	+ 8.05
Housing, water, Elec., Gas an	18.4853	149.69	153.48	137.22	- 2.47	+ 9.09
51 House Rent	8.6110	146.50	146.50	138.56	+ 0.00	+ 5.73
52 Construction Input Items	0.6306	154.07	153.72	129.70	+ 0.23	+ 18.79
53 Construction Wage Rates	0.2526	174.50	173.50	156.63	+ 0.58	+ 11.41
54 Water Supply	0.0645	220.09	220.09	216.56	+ 0.00	+ 1.63
55 Garbage Collection	0.0080	163.74	160.34	150.24	+ 2.12	+ 8.99
56 Electricity Charges	3.4431	116.08	137.30	131.62	- 15.46	- 11.81
57 Liquefied Hydrocarbons	0.9994	216.19	214.23	121.63	+ 0.91	+ <u>77.74</u>
58 Solid Fuel	4.4761	163.77	163.65	141.24	+ 0.07	+ 15.95

Annexure B:CPI (Rural) Index Numbers by Commodity Groups & Commodities (2015-16=100)

Item and Specification	Weight	Index Numbers			% Change in May 2022 over			
		May 22	Apr 22	May 21	Apr 2022	May 2021		
<i>Furnishing and household equi</i>	4.1031	167.54	165.00	142.57	+	1.54	+	17.51
59 Furniture and Furnishing	0.5786	166.94	163.03	142.28	+	2.40	+	17.33
60 Household Textiles	0.4382	152.25	152.07	133.67	+	0.12	+	13.90
61 Household Equipments	1.2774	173.43	169.57	150.52	+	2.28	+	15.22
62 Plastic Products	0.0776	179.85	177.07	156.93	+	1.57	+	14.61
63 Major Tools and Equipments	0.0324	150.19	146.61	127.16	+	2.44	+	18.11
64 Washing Soaps, Detergents and	1.6989	167.04	165.38	138.63	+	1.00	+	20.49
<i>Health</i>	3.5141	169.35	168.39	152.66	+	0.57	+	10.93
65 Drugs and Medicines	1.5792	177.03	174.91	153.89	+	1.21	+	15.04
66 Doctor Clinic Fee	0.5128	207.11	207.11	187.44	+	0.00	+	10.49
67 Dental Services	0.0181	143.76	143.11	132.61	+	0.45	+	8.41
68 Medical Tests	0.3967	161.85	161.85	153.97	+	0.00	+	5.12
69 Hospitals Services	1.0073	141.50	141.50	132.88	+	0.00	+	6.49
<i>Transport</i>	5.5580	183.22	178.83	139.88	+	2.45	+	30.98
70 Motor Vehicles	0.7305	148.88	146.61	134.28	+	1.55	+	10.87
71 Motor Vehicles Accessories	0.1572	169.78	163.81	140.39	+	3.64	+	20.93
72 Motor Fuels	2.4932	213.28	206.77	148.39	+	3.15	+	43.73
73 Mechanical Services	0.3645	166.11	166.11	156.82	+	0.00	+	5.92
74 Motor Vehicle Tax	0.0174	120.86	120.86	127.98	+	0.00	-	5.56
75 Transport Services	1.7952	160.72	157.60	126.97	+	1.98	+	26.58
<i>Communication</i>	1.9940	106.42	106.41	105.56	+	0.01	+	0.81
76 Postal Services	0.0070	149.43	149.43	149.43	+	0.00	+	0.00
77 Communication Apparatus	0.3362	125.12	125.06	120.50	+	0.05	+	3.83
78 Communication Services	1.6508	102.42	102.42	102.33	+	0.00	+	0.09
<i>Recreation and culture</i>	1.3764	149.55	145.86	132.34	+	2.53	+	13.00
79 Recreation and Culture	0.4763	149.48	149.02	134.87	+	0.31	+	10.83
80 Text Books	0.5047	135.85	129.51	119.06	+	4.90	+	14.10
81 Newspapers	0.0230	165.56	165.56	165.56	+	0.00	+	0.00
82 Stationery	0.3724	167.23	162.75	145.04	+	2.75	+	15.30
<i>Education</i>	2.1342	145.58	144.42	137.36	+	0.80	+	5.98
83 Education	2.1342	145.58	144.42	137.36	+	0.80	+	5.98
<i>Restaurants and hotels</i>	6.1895	170.29	163.87	143.66	+	3.92	+	18.54
84 Readymade Food	3.8001	187.38	176.94	154.61	+	5.90	+	21.20
85 Marriage Hall Charges	2.2525	145.61	145.61	127.75	+	0.00	+	13.98
86 Accommodation Services	0.1369	101.62	101.62	101.62	+	0.00	+	0.00
<i>Misc. goods and services</i>	5.0174	174.53	172.25	151.91	+	1.32	+	14.89
87 Personal Grooming Services	1.5363	180.00	178.91	157.32	+	0.61	+	14.42
88 Appliances/Articles/Products	2.2746	146.62	145.01	132.25	+	1.11	+	10.87
89 Personal Effects n.e.c.	1.2065	220.19	215.12	182.09	+	2.36	+	20.92

Annexure C: Wholesale Price Indices by Major Groups & Commodities

(2015-16=100)

Item and Specification	Weight	Index Numbers			% Change in May 2022 over			
		May 22	Apr 22	May 21	Apr 2022	May 2021		
General	100.0000	210.79	207.79	162.64	+	1.44	+	29.61
Agriculture Forestry & Fisher	25.7674	215.48	213.73	166.79	+	0.82	+	29.19
001 Wheat	0.6297	181.36	175.63	151.25	+	3.26	+	19.91
002 Maize	0.6764	185.07	171.75	168.25	+	7.76	+	10.00
003 Rice	2.4413	193.60	183.06	173.62	+	5.76	+	11.51
004 Sorghum / Jowar	0.0214	239.30	231.46	213.46	+	3.39	+	12.11
005 Millet / Bajra	0.0374	213.37	194.66	207.70	+	9.61	+	2.73
006 Vegetables	1.2441	191.07	222.31	111.63	-	14.05	+	<u>71.16</u>
007 Fresh Fruits	1.5144	190.49	251.61	217.08	-	24.29	-	12.25
008 Dry Fruits	0.2478	144.28	144.12	138.89	+	0.11	+	3.88
009 Cotton Seeds	1.1511	154.33	146.27	141.41	+	5.51	+	9.14
010 Other Oil Seeds	0.0722	264.07	258.74	159.83	+	2.06	+	<u>65.22</u>
011 Edible Roots / Potatoes	0.2540	154.42	161.31	230.01	-	4.27	-	32.86
012 Stimulant & Spice Crops	0.1634	197.23	199.19	287.04	-	0.98	-	31.29
013 Pulses	0.4901	177.98	157.93	132.43	+	12.70	+	34.40
014 Sugar Crops	1.0725	157.93	157.93	139.03	+	0.00	+	13.59
015 Fibre Crops	5.3169	399.52	383.49	217.43	+	4.18	+	<u>83.75</u>
016 Unmanufactured Tobacco	0.0742	261.60	260.73	237.54	+	0.33	+	10.13
017 Poultry	0.5633	219.01	186.00	216.18	+	17.75	+	1.31
018 Raw Milk from Bovine Animals	7.0279	154.85	154.38	139.47	+	0.30	+	11.03
019 Eggs	0.5034	166.89	147.97	169.68	+	12.79	-	1.64
020 Raw Animal Materials / Wool	0.0351	109.25	108.18	107.00	+	0.99	+	2.10
021 Hides, Skins & Fur Skins, Raw	0.4834	37.43	36.90	34.06	+	1.44	+	9.89
022 Fuel Wood in Logs	0.0179	131.78	131.78	127.84	+	0.00	+	3.08
023 Fish Live Fresh or Chilled	1.7295	160.22	158.52	158.03	+	1.07	+	1.39
Ores/Minerals, Elec., Gas & W	12.0069	182.43	189.70	165.94	-	3.83	+	9.94
024 Coal not Agglomerated	0.7508	119.31	119.31	75.79	+	0.00	+	<u>57.42</u>
025 Natural Gas Liquefied	5.7065	210.20	209.92	201.67	+	0.13	+	4.23
026 Salt & Pure Sodium Chloride	0.0584	196.81	196.81	169.23	+	0.00	+	16.30
027 Electrical Energy	5.4912	162.05	178.25	141.10	-	9.09	+	14.85
Food, Beverages, Tobacco, Textil	31.1122	186.11	184.28	159.26	+	0.99	+	16.86
Food Products, Beverages &	20.0718	182.93	180.13	154.57	+	1.55	+	18.35
028 Meat of Animals	3.4559	202.59	199.29	172.16	+	1.66	+	17.68
029 Vegetables & Fruit Juice	0.0058	142.97	130.19	122.54	+	9.82	+	16.67
030 Dried Fruits & Nuts	0.1733	186.21	185.02	177.62	+	0.64	+	4.84
031 Fruit Juices	0.3880	137.79	136.72	131.57	+	0.78	+	4.73
032 Vegetable Oils Refined	1.9242	223.94	222.30	157.67	+	0.74	+	42.03
033 Vegetable Ghee	1.5632	311.70	309.55	187.81	+	0.69	+	<u>65.97</u>
034 Oil Cakes	0.9611	194.85	188.50	168.14	+	3.37	+	15.89
035 Processed Liquid Milk	4.4437	154.92	154.18	143.51	+	0.48	+	7.95
036 Milk & Cream in Solid Form	0.0316	145.01	145.15	135.47	-	0.10	+	7.04
037 Ice Cream	0.0047	148.21	148.21	138.52	+	0.00	+	7.00
038 Dairy Products N.E.C	0.0117	152.72	152.63	138.29	+	0.06	+	10.43
039 Wheat Flour	2.3034	179.86	167.81	150.38	+	7.18	+	19.60
040 Other Cereal Flour	0.0604	148.84	147.27	128.14	+	1.07	+	16.15
041 Sugar Refined	1.7975	139.24	141.08	158.41	-	1.30	-	12.10
042 Chocolate	0.0139	90.05	90.05	89.03	+	0.00	+	1.15
043 Sugar Confectionary	0.0738	189.30	189.18	187.48	+	0.06	+	0.97
044 Coffee & Tea	0.7303	151.26	150.83	129.90	+	0.29	+	16.44
045 Spices	0.1449	219.54	219.50	341.64	+	0.02	-	35.74
046 Other Food Products	0.0336	119.30	119.12	119.30	+	0.15	+	0.00
047 Mineral Water	0.0207	140.03	139.37	125.24	+	0.47	+	11.81
048 Beverages	0.6303	140.75	135.55	129.87	+	3.84	+	8.38
049 Tobacco Products	1.2998	121.15	121.15	104.23	+	0.00	+	16.23
Textiles & Apparels	10.3289	196.18	196.14	171.11	+	0.02	+	14.65
050 Cotton Yarn	5.2491	239.61	239.61	203.51	+	0.00	+	17.74
051 Nylon Yarn	0.1719	95.24	95.24	95.24	+	0.00	+	0.00
052 Blended Yarn	0.1689	148.12	148.12	129.30	+	0.00	+	14.56
053 Woven Fabrics	0.0128	170.33	170.33	152.49	+	0.00	+	11.70
054 Cotton Fabrics	0.6343	176.78	176.78	162.88	+	0.00	+	8.53
055 Other Fabrics	1.1016	138.13	138.13	120.07	+	0.00	+	15.04
056 Silk & Rayon Fabrics	0.7350	181.84	181.84	155.57	+	0.00	+	16.89
057 Towels	0.1235	153.39	153.10	141.44	+	0.19	+	8.45
058 Blankets	0.0029	105.56	105.56	104.95	+	0.00	+	0.58
059 Bed Sheets	0.0913	132.62	132.62	123.12	+	0.00	+	7.72

Annexure C: Wholesale Price Indices by Major Groups & Commodities (2015-16=100)

Item and Specification	Weight	Index Numbers			% Change in May 2022 over	
		May 22	Apr 22	May 21	Apr 2022	May 2021
060 Quilts	0.0019	131.51	131.51	117.24	+ 0.00	+ 12.17
061 Woolen Carpets	0.0383	146.63	146.63	137.01	+ 0.00	+ 7.02
062 Synthetic Carpets	0.0566	125.27	125.27	116.51	+ 0.00	+ 7.52
063 Hosiery Products	0.8832	149.38	148.89	136.87	+ 0.33	+ 9.14
064 Readymade Garments	1.0576	142.64	142.64	139.13	+ 0.00	+ 2.52
Leather Products	0.7115	129.63	129.02	119.35	+ 0.47	+ 8.61
065 Leather Without Hair	0.2973	126.46	126.46	108.77	+ 0.00	+ 16.26
066 Other Leather N.E.C	0.2567	119.76	118.07	111.77	+ 1.43	+ 7.15
067 Footwear's	0.1575	151.69	151.69	151.69	+ 0.00	+ 0.00
Other Transportable Goods	22.3979	263.09	249.95	162.47	+ 5.26	+ 61.93
068 Timber	0.0165	165.44	165.44	153.60	+ 0.00	+ 7.71
069 Printing Paper	0.4279	130.70	130.70	130.70	+ 0.00	+ 0.00
070 Hard Board	0.1579	146.50	146.50	146.50	+ 0.00	+ 0.00
071 Motor Spirit	1.6268	218.59	211.53	149.37	+ 3.34	+ 46.34
072 Diesel Oil	5.4849	227.56	219.14	153.45	+ 3.84	+ 48.30
073 Kerosene Oil	0.2151	255.74	246.24	156.89	+ 3.86	+ 63.01
074 Furnace Oil	3.2664	656.58	600.56	289.52	+ 9.33	+ 126.7
075 Mobil Oil	0.7114	152.10	147.53	128.53	+ 3.10	+ 18.34
076 Chemicals	1.7720	246.42	233.35	145.66	+ 5.60	+ 69.17
077 Dyeing Material	0.1539	146.16	146.16	146.16	+ 0.00	+ 0.00
078 Fertilizers	2.8657	166.53	163.69	110.35	+ 1.73	+ 50.91
079 Pesticides	0.2763	146.51	146.51	142.51	+ 0.00	+ 2.81
080 Insecticides	0.1276	111.49	111.49	111.49	+ 0.00	+ 0.00
081 Paints & Varnishes	0.1916	154.44	154.44	136.88	+ 0.00	+ 12.83
082 Medicines	1.1428	171.27	170.47	149.96	+ 0.47	+ 14.21
083 Soaps & Detergents	0.8168	139.57	134.35	116.69	+ 3.89	+ 19.61
084 Auto Tires	0.2703	160.48	150.35	126.22	+ 6.74	+ 27.14
085 Plastic Products	0.4550	126.78	126.70	119.12	+ 0.06	+ 6.43
086 Glass sheets	0.2089	151.83	151.54	147.64	+ 0.19	+ 2.84
087 Other Glass Articles	0.1635	158.06	158.06	150.08	+ 0.00	+ 5.32
088 Ceramics & Sanitary Fixture	0.0244	140.49	138.35	126.79	+ 1.55	+ 10.81
089 Bricks, Blocks & Tiles	0.1566	146.02	146.48	134.53	- 0.31	+ 8.54
090 Cement	1.8145	173.60	172.39	127.53	+ 0.70	+ 36.12
091 Bed Foam	0.0006	232.26	200.26	156.92	+ 15.98	+ 48.01
092 Matches	0.0505	1363.6	1226.9	1173.30	+ 11.14	+ 16.22
Metal Product, Machinery & Eq	8.7156	189.70	190.74	158.28	- 0.55	+ 19.85
093 Steel Bar & Sheets	1.4615	260.25	273.67	183.62	- 4.90	+ 41.73
094 Pipe Fittings	0.0780	230.64	214.15	169.43	+ 7.70	+ 36.13
095 Steel Products	0.3879	141.22	141.22	134.30	+ 0.00	+ 5.15
096 Engines & Motors	0.0046	117.67	117.67	107.29	+ 0.00	+ 9.67
097 Vacuum Pumps	0.0155	107.56	107.56	107.56	+ 0.00	+ 0.00
098 Air Conditioners	0.0049	180.30	167.85	126.48	+ 7.42	+ 42.55
099 Cultivators	0.0551	174.49	174.49	103.75	+ 0.00	+ 68.18
100 Chuff Cutter	0.1293	261.82	242.86	121.43	+ 7.81	+ 115.6
101 Tractors	0.0028	169.16	169.16	129.36	+ 0.00	+ 30.77
102 Lathe Machines	0.0525	290.58	270.02	217.68	+ 7.61	+ 33.49
103 Concrete Mixture	0.0107	195.88	163.24	100.00	+ 20.00	+ 95.88
104 Fridge, WashM, SewM, Fans, Iron	1.1645	179.07	176.47	161.46	+ 1.47	+ 10.91
105 Electric Wires	0.0912	148.23	148.23	144.65	+ 0.00	+ 2.47
106 Lighting Equipments	1.4431	135.20	134.82	119.49	+ 0.28	+ 13.15
107 Radio & Television	0.1843	118.05	112.72	106.16	+ 4.73	+ 11.20
108 Motor Vehicles	0.0244	187.29	182.98	158.44	+ 2.36	+ 18.21
109 Motorcycles	0.2570	166.21	163.51	131.95	+ 1.65	+ 25.96
110 Bicycles	3.3483	194.03	194.03	172.55	+ 0.00	+ 12.45