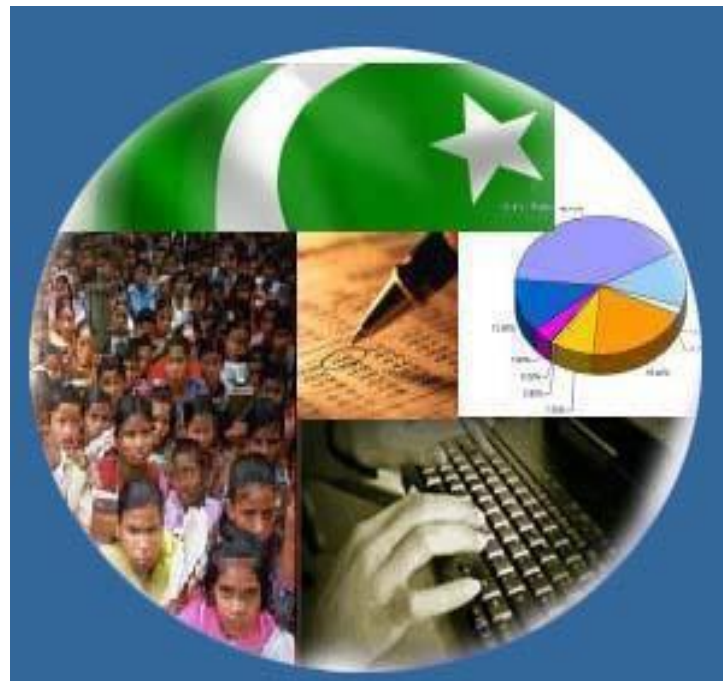




Monthly Review on Price Indices



March 2024
(Base Year 2015-16)

Government of Pakistan
Ministry of Planning, Development & Special Initiatives
Pakistan Bureau of Statistics
Islamabad

PRICE STATISTICS TEAM

S#	Name	Designation
1.	Dr. Naeem Uz Zafar	Chief Statistician
2.	Dr. Bahrawar Jan	Deputy Director General
3.	Mr. Naseer Ahmad	Director
4.	Dr. Ahtasham Gul	Chief Statistical Officer
5.	Mr. Adnan Shams	Statistical Officer
6.	Mr. Muhammad Mazhar	Statistical Officer
7.	Mr. Kashif Ali	Statistical Officer
8.	Miss. Umaira Zareen	Statistical Officer
9.	Mr. Kashif Yaqoob	Statistical Officer
10.	Mr. Umer Farooq	Statistical Assistant
11.	Mr. Ansar Mahmood	Statistical Assistant
12.	Mrs. Madiha Gulfraz	Statistical Assistant
13.	Mrs. Humail Fatima	Statistical Assistant
14.	Mr. Muhammad Asif	Statistical Assistant

IT & SOFTWARE TEAM

1.	Mr. Muhammad Ehtesham	Director (DP)
2.	Mrs. Sobia Munawar	Director (DP)
3.	Mr. Arsalan Bashir	Data Processing Officer
4.	Mr. Muhammad Kibria	Data Processing Officer
5.	Mr. Muhammad Irfan Bajwa	Data Processing Assistant

Inflation in Brief

- CPI inflation General**, increased to 20.7% on year-on-year basis in March 2024 as compared to an increase of 23.1% in the previous month and 35.4% in March 2023. On month-on-month basis, it increased to 1.7% in March 2024 as compared to no change observed in the previous month and an increase of 3.7% in March 2023.
- CPI inflation Urban**, increased to 21.9% on year-on-year basis in March 2024 as compared to an increase of 24.9% in the previous month and 33.0% in March 2023. On month-on-month basis, it increased to 1.4% in March 2024 as compared to an increase of 0.2% in the previous month and an increase of 3.9% in March 2023.
- CPI inflation Rural**, increased to 19.0% on year-on-year basis in March 2024 as compared to an increase of 20.5% in the previous month and 38.9% in March 2023. On month-on-month basis, it increased to 2.1% in March 2024 as compared to a decrease of 0.3% in the previous month and an increase of 3.5% in March 2023.
- SPI inflation** on YoY increased to 25.9% in March 2024 as compared to an increase of 30.4% a month earlier and 40.4% in March 2023. On MoM basis, it increased by 2.1% in March 2024 as compared to a decrease of 0.8% a month earlier and an increase of 5.8% in March 2023.
- WPI inflation** on YoY basis increased to 14.8% in March 2024 as compared to an increase of 18.7% a month earlier and an increase of 37.5% in March 2023. On MoM basis, it increased by 1.3% in March 2024 as compare to an increase of 1.1% in the previous month and an increase of 4.7% in corresponding month of last year i.e. March 2023.
- Figures 1 and 2 show graphically the yearly data of Table 1.a for Urban and Rural CPI while Table 1.1 shows "Period Average" and "YoY" percent changes in indices of three years.

Table 1.a General Inflation (%) (Base 2015-16)																		
PERIOD	CPI														SPI**		WPI	
	General						Food				Non-Food							
	National		Urban		Rural		Urban		Rural		Urban		Rural		YoY	MoM	YoY	MoM
	YoY	MoM	YoY	MoM	YoY	MoM	YoY	MoM	YoY	MoM	YoY	MoM	YoY	MoM				
Jun-22	21.3	6.3	19.8	6.2	23.6	6.6	24.0	5.3	27.0	6.0	17.3	6.8	20.4	7.1	21.7	6.2	38.9	8.2
Jul-22	24.9	4.3	23.6	4.5	26.9	4.2	27.4	4.3	29.6	3.7	21.3	4.6	24.5	4.6	28.2	7.3	38.5	2.0
Aug-22	27.3	2.4	26.2	2.6	28.8	2.2	28.8	1.6	30.2	1.2	24.7	3.3	27.5	3.1	34.0	5.2	41.2	3.1
Sep-22	23.2	-1.2	21.2	-2.1	26.1	0.2	30.8	5.2	32.7	5.7	15.2	-6.6	20.1	-4.9	28.6	-1.4	38.9	1.4
Oct-22	26.6	4.7	24.6	4.5	29.5	5.0	34.7	4.5	37.2	6.1	18.2	4.5	22.4	3.9	24.0	-1.5	32.6	-0.5
Nov-22	23.8	0.8	21.6	0.4	27.2	1.3	29.7	0.0	33.5	0.5	16.4	0.6	21.4	2.1	27.1	6.1	27.7	0.0
Dec-22	24.5	0.5	21.6	0.3	28.8	0.7	32.7	0.0	37.9	0.1	14.8	0.6	20.7	1.4	27.8	0.2	27.1	-0.7
Jan-23	27.6	2.9	24.4	2.4	32.3	3.6	39.0	3.9	45.2	5.7	15.6	1.2	20.9	1.5	30.5	1.3	28.5	1.8
Feb-23	31.5	4.3	28.8	4.5	35.6	4.0	41.9	4.3	47.0	3.9	20.8	4.7	25.3	4.1	33.6	3.7	36.4	8.2
Mar-23	35.4	3.7	33.0	3.9	38.9	3.5	47.1	5.6	50.2	4.5	24.1	2.7	28.5	2.4	40.4	5.8	37.5	4.7
Apr-23	36.4	2.4	33.5	2.0	40.7	3.0	46.8	3.4	52.2	4.2	24.9	1.0	29.9	1.6	42.1	2.7	33.4	0.1
May-23	38.0	1.6	35.1	1.5	42.2	1.7	48.1	1.9	52.4	1.4	26.6	1.2	32.5	2.0	43.0	1.3	32.8	1.0
Jun-23	29.4	-0.3	27.3	0.1	32.4	-0.8	40.8	0.1	41.5	-1.6	18.7	0.1	23.8	0.1	34.9	0.2	22.4	-0.3
Jul-23	28.3	3.5	26.3	3.6	31.3	3.3	40.2	3.7	41.3	3.5	17.3	3.5	22.0	3.0	29.3	2.8	23.1	2.5
Aug-23	27.4	1.7	25.0	1.6	30.9	1.9	38.8	0.6	40.6	0.8	16.3	2.4	22.0	3.1	27.9	4.1	24.3	4.2
Sep-23	31.4	2.0	29.7	1.7	33.9	2.5	33.9	1.5	35.4	1.8	26.8	1.8	32.3	3.2	32.0	1.7	26.4	3.1
Oct-23	26.8	1.0	25.5	1.1	28.7	0.9	28.9	0.6	28.6	0.7	23.1	1.4	28.8	1.1	34.2	0.2	24.6	-1.9
Nov-23	29.2	2.7	30.4	4.3	27.5	0.4	29.8	0.8	29.2	1.0	30.9	7.0	25.9	-0.2	30.6	3.3	26.4	1.4
Dec-23	29.7	0.8	30.9	0.7	27.9	1.0	28.8	-0.7	29.3	0.1	32.4	1.8	26.4	1.8	35.3	3.8	27.3	0.0
Jan-24	28.3	1.8	30.2	1.8	25.7	1.9	27.4	2.8	25.1	2.3	32.3	1.1	26.3	1.4	36.2	2.0	27.0	1.5
Feb-24	23.1	0.0	24.9	0.2	20.5	-0.3	20.2	-1.5	19.0	-1.1	28.2	1.5	22.1	0.6	30.4	-0.8	18.7	1.1
Mar-24	20.7	1.7	21.9	1.4	19.0	2.1	16.6	2.4	17.1	2.8	25.8	0.7	21.0	1.4	25.9	2.1	14.8	1.3

** SPI for quintile 1. Digits 0.0* are due to rounding off.

Core inflation (NFNE)

7. Measured by **non-food non-energy Urban** increased to 12.8% on (YoY) basis in March 2024 as compared to an increase of 15.5% in the previous month and 18.6% in March 2023. On (MoM) basis, it increased by 0.1% in March 2024 as compared to an increase of 0.3% in previous month, and an increase of 2.5% in corresponding month of last year i.e. March, 2023.
8. Measured by **non-food non-energy Rural** increased to 20.0% on (YoY) basis in March 2024 as compared to an increase of 21.9% in the previous month and 23.1% in March 2023. On (MoM) basis, it increased by 0.8% in March 2024 as compared to an increase of 0.4% in previous month, and an increase of 2.4% in corresponding month of last year i.e. March 2023.

Core inflation (Trimmed)

9. Measured by 20% **weighted trimmed mean Urban** increased to 14.8% on (YoY) basis in March 2024 as compared to 16.0% in the previous month and 28.7% in March 2023. On (MoM) basis, it increased by 0.6% in March 2024 as compared to an increase of 0.3% in the previous month and an increase of 2.7% in corresponding month of last year i.e. March 2023.
10. Measured by 20% **weighted trimmed mean Rural** increased to 18.4% on (YoY) basis in March 2024 as compared to 21.3% in the previous month and 35.0% in March 2023. On (MoM) basis, it increased to 0.9% in March 2024 as compared to an increase of 0.4% in the previous month and an increase of 2.9% in corresponding month of last year i.e. March 2023.

Table 1.b Core Inflation (%) (Base 2015-16)

Period	NFNE				Trimmed			
	Urban		Rural		Urban		Rural	
	YoY	MoM	YoY	MoM	YoY	MoM	YoY	MoM
Mar-23	18.6	2.5	23.1	2.4	28.7	2.7	35.0	2.9
Apr-23	19.5	1.8	24.9	2.7	28.6	1.5	37.3	2.0
May-23	20.0	1.2	26.9	2.5	30.5	1.5	38.8	2.0
Jun-23	18.5	0.7	25.2	0.9	22.9	0.8	29.9	0.1
Jul-23	18.4	1.2	24.6	1.2	21.7	1.9	28.7	2.4
Aug-23	18.4	1.8	25.9	2.8	23.0	1.5	30.5	1.4
Sep-23	18.6	1.0	27.3	2.6	25.0	1.1	33.3	1.7
Oct-23	18.5	1.2	26.7	1.0	24.6	0.6	30.4	0.7
Nov-23	18.6	0.9	25.9	1.4	22.9	0.1	27.9	0.5
Dec-23	18.2	0.8	25.1	0.9	23.3	0.3	28.0	0.7
Jan-24	17.8	1.1	24.6	1.2	22.1	1.0	25.8	1.2
Feb-24	15.5	0.3	21.9	0.4	16.0	0.3	21.3	0.4
Mar-24	12.8	0.1	20.0	0.8	14.8	0.6	18.4	0.9

Table 1.1 Period Average and Y-o-Y % Change

INDEX	Average July - March % Changes			March over March % Changes		
	2023-2024	2022-2023	2021-2022	2023-2024	2022-2023	2021-2022
CPI (National)	27.06	27.26	10.77	20.68	35.37	12.72
CPI (Urban)	27.13	25.04	10.78	21.90	32.97	11.94
CPI (Rural)	26.97	30.56	10.75	18.97	38.88	13.88
SPI	31.26	30.50	17.26	25.86	40.44	13.02
WPI	23.43	34.15	22.27	14.78	37.52	23.78

Figure 1: Urban Inflation - YoY, Special Indices

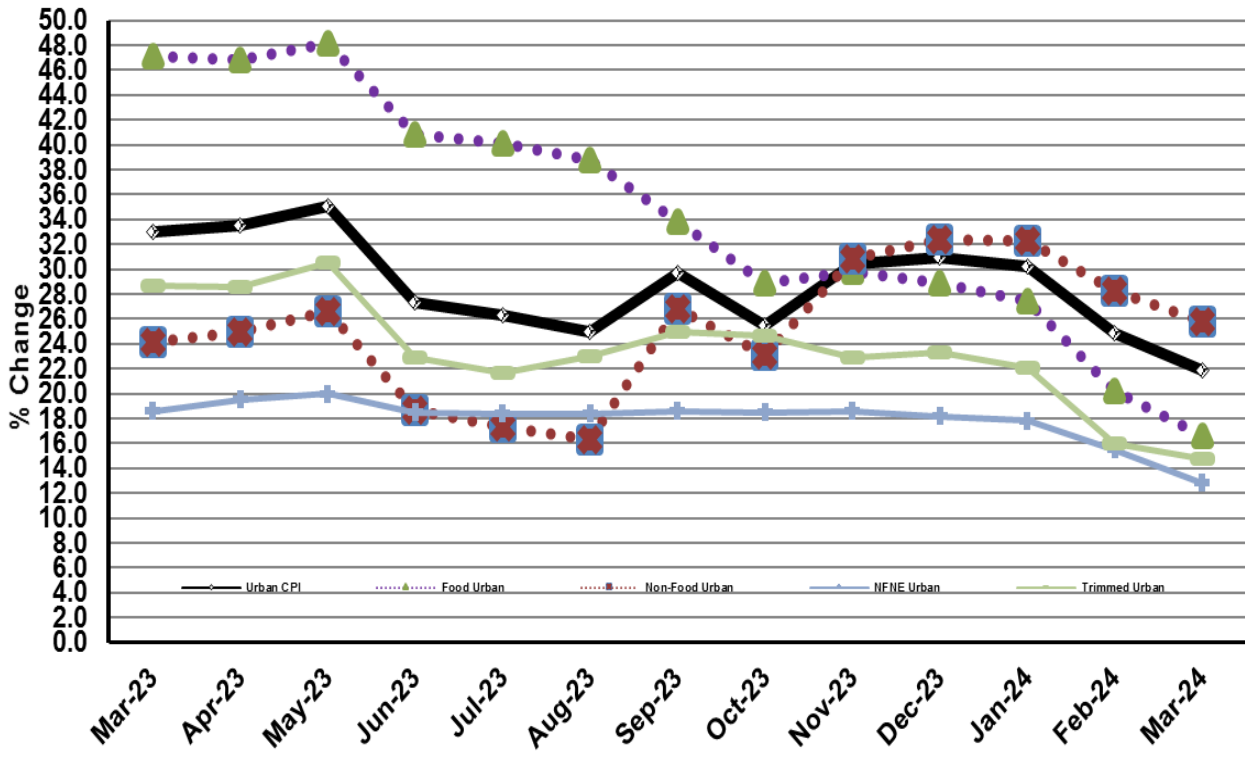


Figure 2: Rural Inflation - YoY, Special Indices

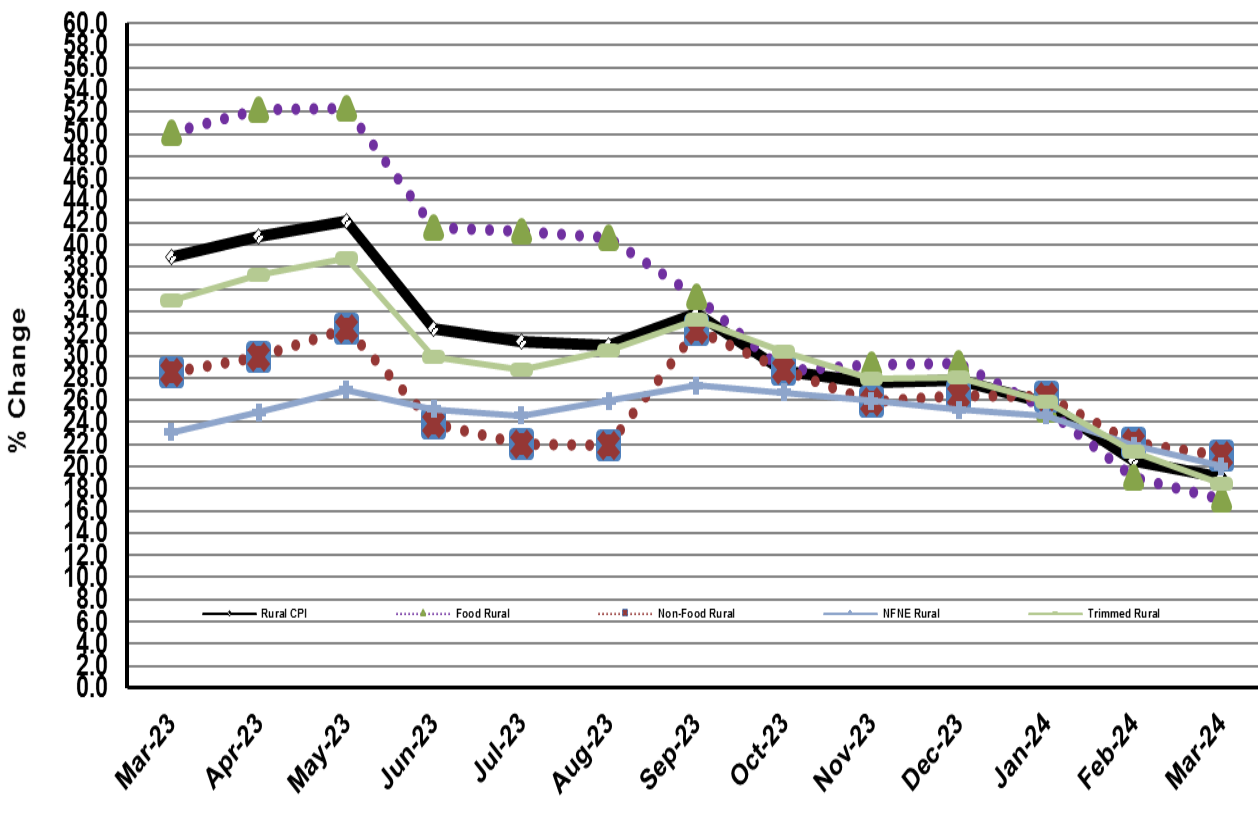


Figure 3: Urban Inflation - MoM, Special Indices

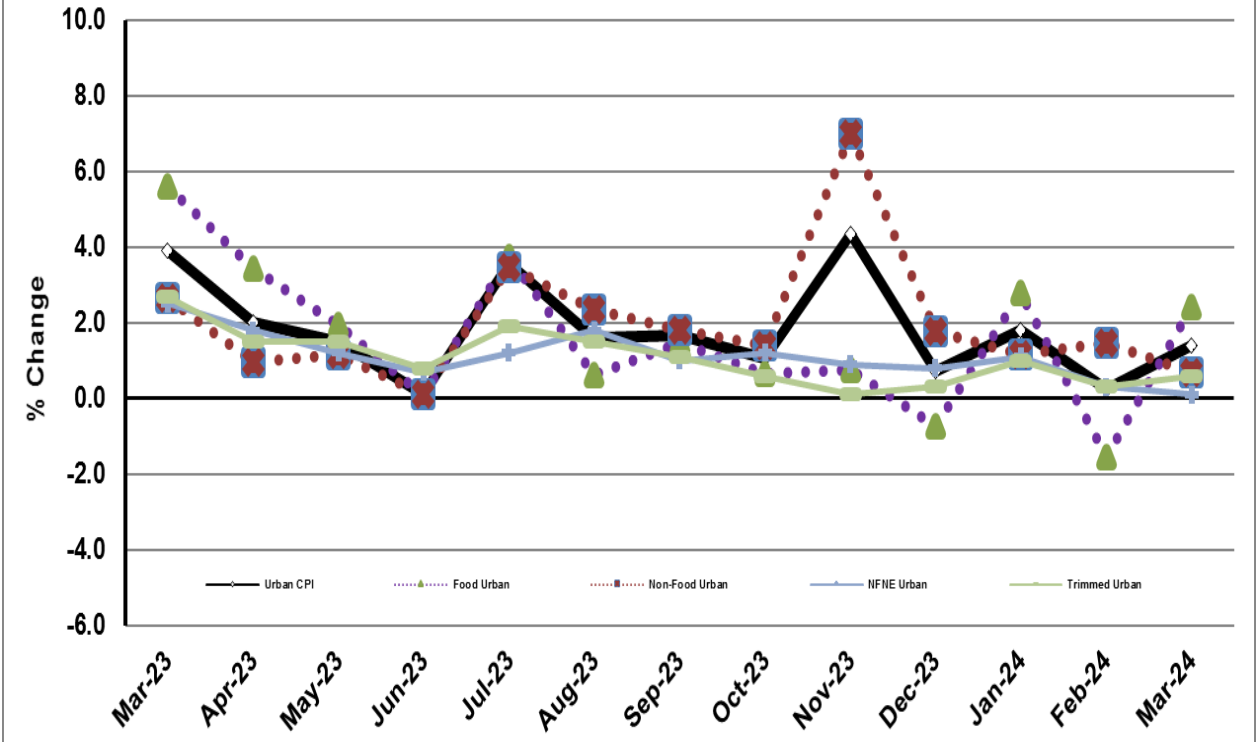


Figure 4: Rural Inflation - MoM, Special Indices

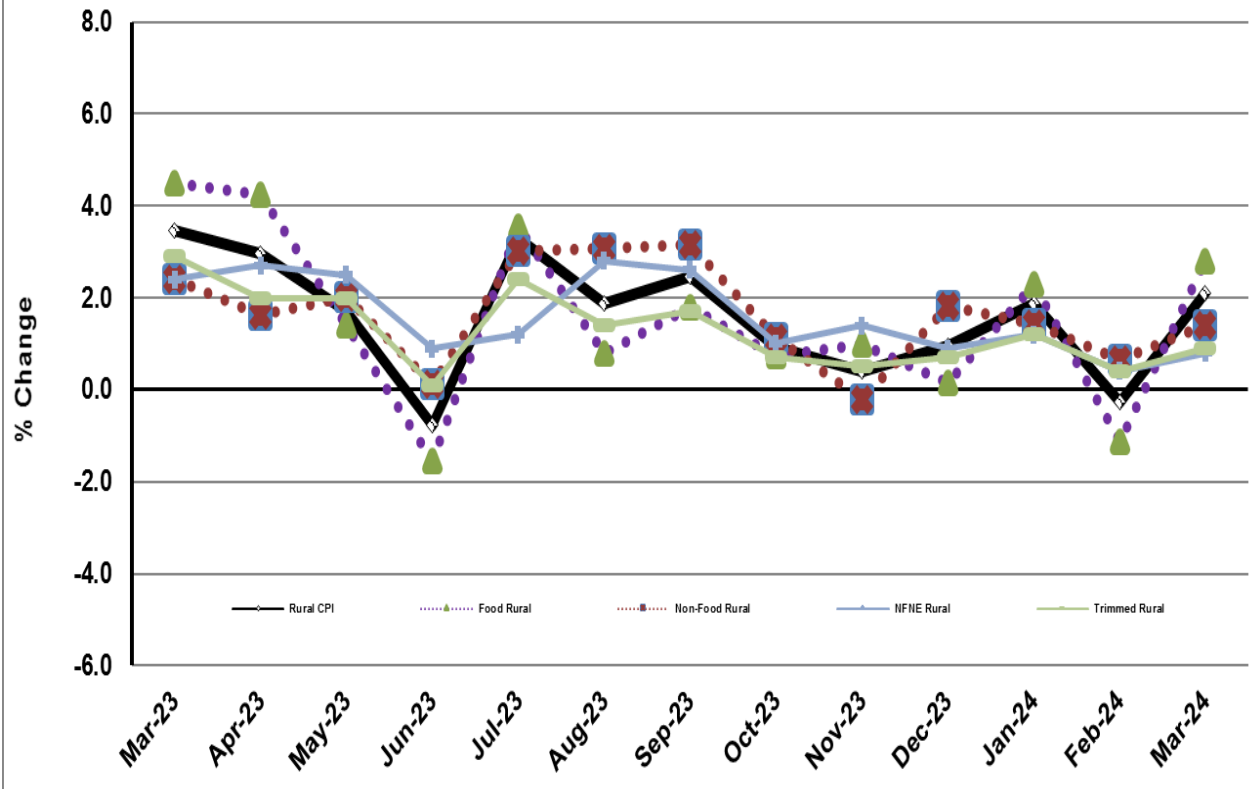


Figure 5: CPI YoY (National, Urban, Rural)

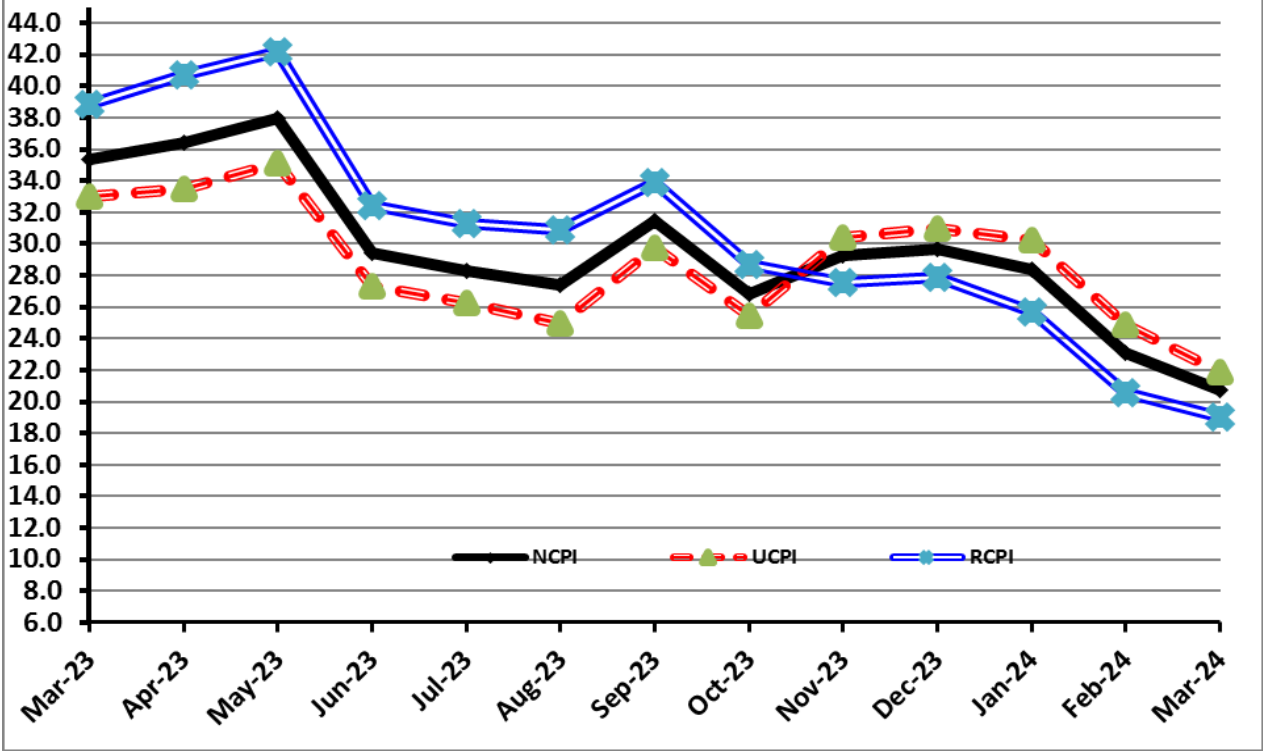
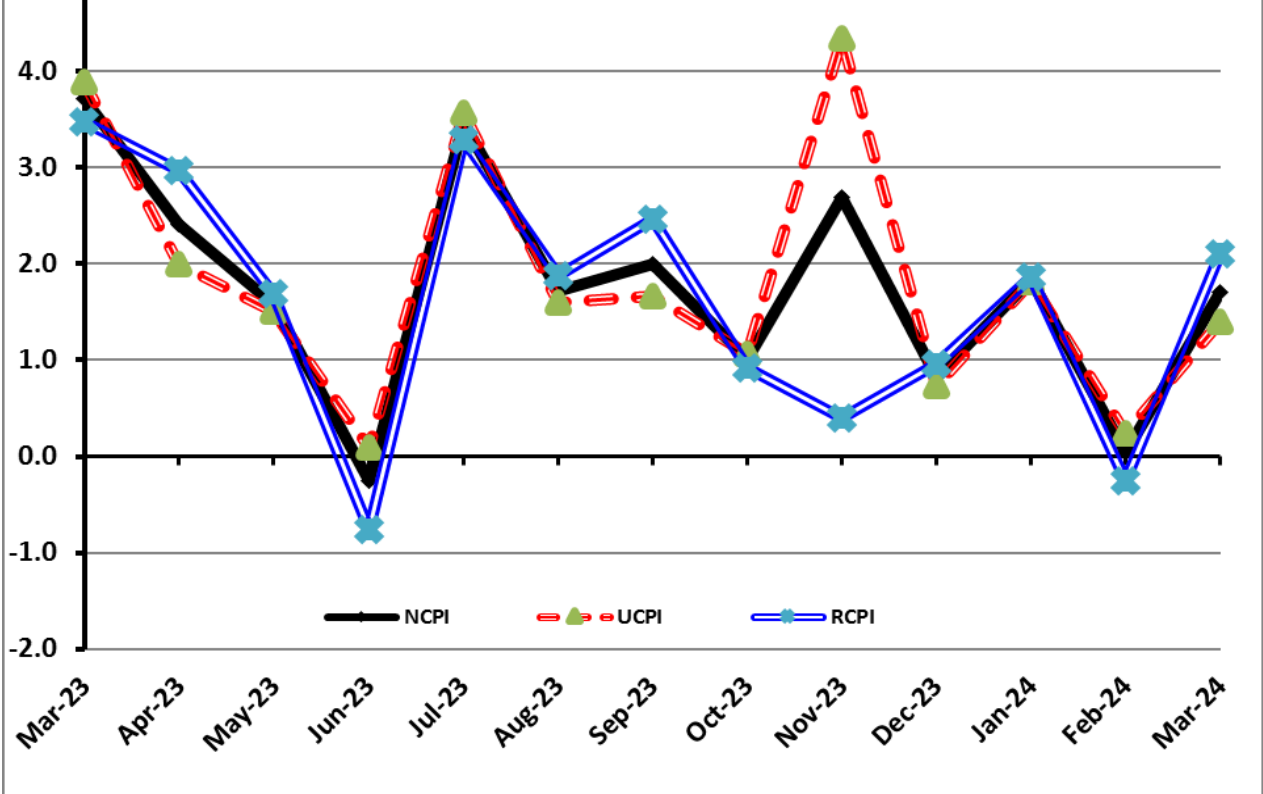


Figure 6: CPI MoM (National, Urban, Rural)



I. National Consumer Price Index (N-CPI)

The **National Consumer Price Index** for **March 2024** is increased to 1.71% over **February 2024** and increased to 20.68% over corresponding month of the last year i.e. **March 2023**.

Table 1: Consumer Price Index (National) by Group of Commodities and Services (Base 2015-16)

No	Group	Group Weight (%)	Indices			% Change Mar 2024 Over		Impact (In % points) Mar 2024 Over	
			Mar 24	Feb 24	Mar 23	Feb 24	Mar 23	Feb 24	Mar 23
	General	100.00	264.46	260.01	219.14	1.71	20.68	1.71	20.68
1.	Food & Non-alcoholic Bev.	34.58	293.36	285.06	250.25	2.91	17.22	1.10	6.80
	<i>Non-perishable Food Items</i>	29.60	286.00	286.82	252.47	-0.29	13.28	-0.09	4.53
	<i>Perishable Food Items</i>	4.99	337.05	274.60	237.11	22.74	42.15	1.20	2.27
2.	Alcoholic Bev. & Tobacco	1.02	365.80	365.61	353.14	0.05	3.59	0.00	0.06
3.	Clothing & Footwear	8.60	228.13	224.43	196.50	1.65	16.10	0.12	1.24
4.	Housing, Water, Electricity, Gas & Fuels	23.63	244.24	240.63	178.80	1.50	36.60	0.33	7.06
5.	Furnishing & Household Equipment Maintenance	4.10	265.47	263.23	220.20	0.85	20.56	0.04	0.85
6.	Health	2.79	236.68	235.39	197.84	0.55	19.63	0.01	0.49
7.	Transport	5.91	311.46	311.93	280.20	-0.15	11.16	-0.01	0.84
8.	Communication	2.21	134.83	134.74	117.64	0.07	14.61	0.00	0.17
9.	Recreation & Culture	1.59	256.67	256.41	205.86	0.10	24.68	0.00	0.37
10.	Education	3.79	187.50	186.15	166.90	0.72	12.34	0.02	0.36
11.	Restaurants & Hotels	6.92	266.35	264.17	224.10	0.82	18.85	0.06	1.33
12.	Miscellaneous	4.87	276.81	274.65	226.88	0.78	22.00	0.04	1.11

II. Urban Consumer Price Index (UCPI)

The Urban Consumer Price Index for **March 2024** is increased to 1.43% over **February 2024** and increased to 21.90% over corresponding month of the last year i.e. **March 2023**.

Table 2: Consumer Price Index (Urban) by Group of Commodities and Services (Base 2015-16)

No	Group	Group Weight (%)	Indices			% Change Mar 2024 Over		Impact (In % points) Mar 2024 Over	
			Mar 24	Feb 24	Mar 23	Feb 24	Mar 23	Feb 24	Mar 23
	General	100.00	259.47	255.82	212.85	1.43	21.90	1.43	21.90
1.	Food & Non-alcoholic Bev.	30.42	286.46	278.76	244.66	2.76	17.08	0.92	5.97
	<i>Non-perishable Food Items</i>	25.97	279.63	280.67	246.76	-0.37	13.32	-0.11	4.01
	<i>Perishable Food Items</i>	4.46	326.28	267.61	232.43	21.92	40.38	1.02	1.96
2.	Alcoholic Bev. & Tobacco	0.85	386.20	386.05	374.90	0.04	3.01	0.00	0.05
3.	Clothing & Footwear	8.01	216.67	214.12	194.04	1.19	11.66	0.08	0.85
4.	Housing, Water, Electricity, Gas & Fuels	27.03	250.13	247.13	173.72	1.21	43.98	0.32	9.70
5.	Furnishing & Household Equip. & Maintenance	4.09	256.37	255.20	217.40	0.46	17.93	0.02	0.75
6.	Health	2.31	236.76	235.03	197.03	0.74	20.16	0.02	0.43
7.	Transport	6.14	305.33	306.81	281.79	-0.48	8.35	-0.04	0.68
8.	Communication	2.35	138.77	138.73	122.10	0.03	13.65	0.00	0.18
9.	Recreation & Culture	1.73	246.16	246.00	200.57	0.07	22.73	0.00	0.37
10.	Education	4.88	188.09	187.42	168.64	0.36	11.53	0.01	0.45
11.	Restaurants & Hotels	7.41	265.74	263.47	225.06	0.86	18.08	0.07	1.42
12.	Miscellaneous	4.77	271.71	269.89	224.93	0.67	20.80	0.03	1.05

Main contributors to month-on-month and year-on-year percentage changes are given below and detail is given in **Annexure-A**.

1. MONTH-ON-MONTH Top few commodities which varied from previous month are given below:

FOOD

Increased: Tomatoes (52.14%), Onions (28.04%), Potatoes (23.65%), Fresh Fruits (21.90%), Fresh Vegetables (12.82%), Meat (3.99%), Pulse Moong (1.95%), Gram Whole (1.92%), Beverages (1.75%), Sweetmeat (1.19%), Nimco (1.13%), Readymade Food (1.08%), Sugar (0.65%), Condiments and Spices (0.60%), Besan (0.60%) and Pulse Masoor (0.54%).

Decreased: Chicken (5.54%), Cooking Oil (3.42%), Eggs (2.78%), Wheat (2.02%), Wheat Flour (1.29%), Vegetable Ghee (0.80%), Mustard Oil (0.79%), Bakery and Confectionary (0.76%) and Dry Fruits (0.06%).

NON-FOOD:

Increased: Electricity Charges (5.11%), Tailoring (3.13%), Liquified Hydrocarbons (2.90%), Readymade Garments (2.22%), Motor Fuel (1.70%), Personal Grooming Services (1.36%), Personal Effects (1.30%), Drugs and Medicines (1.19%).

Decreased: Transport Services (6.43%).

YEAR-ON-YEAR: Top few commodities which varied from corresponding month of previous year i.e. March, 2023 are given below:

FOOD

Increased: Tomatoes (188.44%), Onions (84.06%), Fresh Vegetables (55.31%), Condiments and Spices (49.08%), Gur (44.04%), Sugar (37.29%), Potatoes (36.03%), Beans (34.52%), Wheat flour (32.68%), Beverages (27.69%), Pulse Mash (27.01%), Fish (25.13%), Dry Fruits (24.48%), Sweetmeat (23.01%), Meat (22.42%) and Pulse Masoor (21.84%).

Decreased: Cooking Oil (22.59%), Vegetable Ghee (20.13%), Mustard Oil (15.78%), Fresh Fruits (4.15%), Besan (0.68%) and Gram Whole (0.38%).

NON-FOOD:

Increased: Gas Charges (318.74%), Electricity Charges (73.08%), Newspapers (34.15%), Text Books (33.70%), Accommodation Services (30.61%), Washing Soap/Detergents/Match Box (24.17%), Woolen Readymade Garments (23.44%), Furniture and Furnishing (22.20%), Transport Services (21.93%) and Stationery (21.36%).

Decreased: Liquified Hydrocarbons (1.60%).

III. Rural Consumer Price Index (RCPI)

The Rural Consumer Price Index for March 2024 is decreased to 2.13% over February 2024 and increased to 18.97% over corresponding month of the last year i.e. March 2023.

Table 3: Consumer Price Index (Rural) by Group of Commodities and Services (Base 2015-16)

No	Group	Group Weight (%)	Indices			% Change Mar 2024 Over		Impact (In % points) Mar 2024 Over	
			Mar 24	Feb 24	Mar 23	Feb 24	Mar 23	Feb 24	Mar 23
	General	100.00	272.00	266.33	228.63	2.13	18.97	2.13	18.97
1.	Food & Non-alcoholic Bev.	40.87	301.11	292.14	256.54	3.07	17.37	1.38	7.97
	<i>Non-perishable Food Items</i>	<i>35.08</i>	<i>293.12</i>	<i>293.70</i>	<i>258.85</i>	<i>-0.20</i>	<i>13.24</i>	<i>-0.08</i>	<i>5.26</i>
	<i>Perishable Food Items</i>	<i>5.79</i>	<i>349.57</i>	<i>282.72</i>	<i>242.54</i>	<i>23.65</i>	<i>44.13</i>	<i>1.45</i>	<i>2.71</i>
2.	Alcoholic Bev. & Tobacco	1.28	345.24	345.01	331.19	0.07	4.24	0.00	0.08
3.	Clothing & Footwear	9.48	242.74	237.58	199.63	2.17	21.59	0.18	1.79
4.	Housing, Water, Electricity, Gas & Fuels	18.49	231.25	226.28	190.01	2.20	21.70	0.34	3.33
5.	Furnishing & Household Equip. & Maintenance	4.10	279.16	275.31	224.41	1.40	24.40	0.06	0.98
6.	Health	3.51	236.60	235.75	198.64	0.36	19.11	0.01	0.58
7.	Transport	5.56	321.67	320.47	277.55	0.37	15.90	0.03	1.07
8.	Communication	1.99	127.82	127.63	109.70	0.15	16.52	0.00	0.16
9.	Recreation & Culture	1.38	276.61	276.15	215.91	0.17	28.11	0.00	0.37
10.	Education	2.13	185.46	181.78	160.90	2.02	15.26	0.03	0.23
11.	Restaurants & Hotels	6.19	267.45	265.44	222.37	0.76	20.27	0.05	1.22
12.	Miscellaneous	5.02	284.12	281.49	229.69	0.93	23.70	0.05	1.19

Main contributors to Month-on-Month and Year-on-Year percentage changes are given below and detail is given in **Annexure-B**.

1. MONTH-ON-MONTH Top few commodities which varied from previous month are given below:

FOOD

Increased: Tomatoes (56.91%), Onions (28.50%), Potatoes (26.23%), Fresh Fruits (25.33%), Fresh Vegetables (13.12%), Meat (2.78%), Nimco (2.67%), Condiments and Spices (2.04%), Honey (1.84%), Beans (1.82%), Beverages (1.60%), Sweetmeat (1.51%), Butter (1.47%), Besan (1.43%), Bakery and Confectionary (1.34%), Wheat Products (1.13%), Milk Products (1.09%) and Pulse Moong (1.07%).

Decreased: Eggs (4.44%), Chicken (3.99%), Wheat (1.47%), Pulse Mash (1.39%), Mustard Oil (0.75%), Wheat Flour (0.68%), Pulse Masoor (0.67%) and Gram Whole (0.58%).

NON-FOOD

Increased: Electricity Charges (5.11%), Liquefied Hydrocarbons (4.11%), Tailoring (3.60%), Cotton Cloth (3.18%), Woolen Cloth (2.60%), Furniture and Furnishing (2.53%), Dopatta (2.51%), Education (2.02%), Solid Fuel (1.90%), Motor Fuels (1.84%), Personal Effects (1.69%), Household Equipments (1.63%), Readymade Garments (1.46%),

Decreased: Transport Services (1.78%).

YEAR-ON-YEAR: Top few commodities which varied from corresponding month of previous year i.e. March, 2023 are given below:

FOOD

Increased: Tomatoes (183.36%), Onions (70.67%), Fresh Vegetables (67.63%), Gur (43.47%), Wheat Flour (40.71%), Sugar (40.42%), Beans (38.21%), Potatoes (36.78%), Beverages (26.96%), Pulse Mash (25.20%), Fish (23.61%), Bakery and Confectionary (23.35%), Meat (23.26%), Butter (23.18%), Milk Products (23.05%), Nimco (22.38%), Ice Cream (22.27%), Milk Powder (21.05%) and Tea (21.01%).

Decreased: Cooking Oil (21.68%), Vegetable Ghee (19.25%), Mustard Oil (11.96%), Fresh Fruits (10.68%), Pulse Gram (0.53%) and Chicken (0.29%).

NON-FOOD

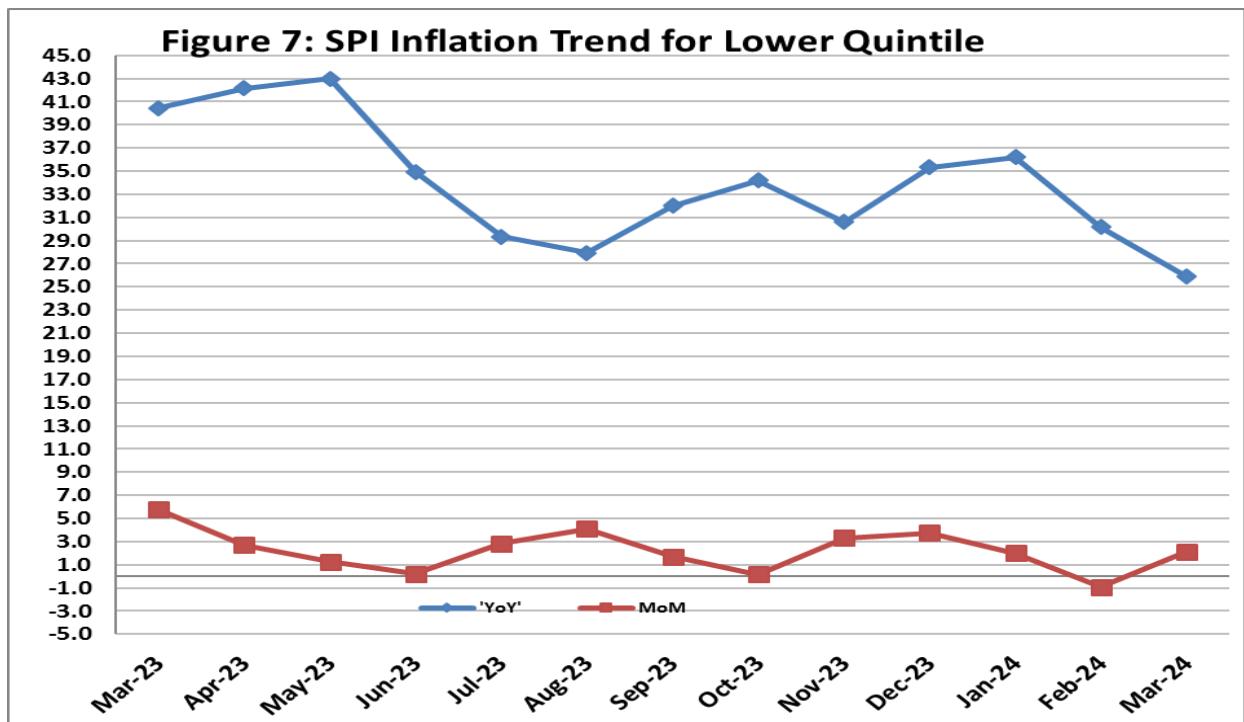
Increased: Electricity Charges (73.08%), Text Books (50.15%), Newspapers (46.34%), Transport Services (45.94%), Woolen Readymade Garments (38.42%), Appliances/Articles/Products for Personal Care (33.28%), Water Supply (31.65%), Washing Soaps, Detergents and Match Box (27.99%), Dopatta (26.95%) and Furniture & Furnishing (24.70%).

IV. Sensitive Price Indicator

Quintile-wise percentage changes YoY and MoM are given below in Table 4. The series from Mar 2023 to Mar 2024 is also graphed below in Figure 7.

Table 4: Sensitive Price Indicator (Base 2015-16)					
Quintiles	Indices			% Change Mar 2024 Over	
	Mar 24	Feb 24	Mar 23	Feb 24	Mar 23
1	316.02	309.48	251.08	2.11	25.86
2	314.50	307.46	242.22	2.29	29.84
3	336.05	327.38	245.67	2.65	36.79
4	323.50	316.24	241.73	2.30	33.83
5	322.80	316.53	251.07	1.98	28.57
Combined	324.06	316.81	245.76	2.29	31.86

Table 4.1: Weekly Percentage Change of SPI During March 2024				
Quintiles	% Change with Previous week			
	07-03-2024	14-03-2024	21-03-2024	28-03-2024
Quintile 1	1.69	0.91	-1.83	-0.27
Combined	1.11	1.35	-1.13	-0.09



V. Wholesale Price Index

The Wholesale Price Index for **March, 2024** increased by 1.25% over **February, 2024**. It increased to 14.78% over the corresponding month of the last year i.e. **March, 2023**. YoY and MoM movements, from March, 2023 to March, 2024 are also graphed below in Figure 8.

Table 5: Wholesale Price Index by Group of Commodities (Base 2015-16)

No	Group	Group Weight (%)	Indices			% Change Mar 2024 Over		Impact (In % points) Mar 2024 Over	
			Mar 24	Feb 24	Mar 23	Feb 24	Mar 23	Feb 24	Mar 23
	General	100.00	317.95	314.02	277.01	1.25	14.78	1.25	14.78
1	Agriculture Forestry & Fishery	25.77	299.87	292.08	265.41	2.67	12.98	0.64	3.20
2	Ores/Minerals, Elec., Gas & Water	12.01	387.71	378.04	245.85	2.56	57.70	0.37	6.15
3	Food, Beverages, Tobacco, Textiles & Leather Products	31.11	263.95	262.45	243.18	0.57	8.54	0.15	2.33
	i. Food Products, Beverages & Tobacco	20.07	279.03	277.88	254.33	0.41	9.71	0.07	1.79
	ii. Textiles & Apparels	10.33	240.03	237.73	226.64	0.97	5.91	0.08	0.50
	iii. Leather Products	0.71	185.68	185.68	168.62	0.00	10.12	0.00	0.04
4	Other Transportable Goods	22.40	351.98	350.83	327.07	0.33	7.62	0.08	2.01
5	Metal Product, Machinery & Equipment	8.72	380.58	380.16	346.33	0.11	9.89	0.01	1.08

Main contributors to month-on-month and year-on-year percentage changes are given below and detail is given in **Annexure-C**.

1. **MONTH-ON-MONTH:** Top few commodities which varied from previous month are given below:

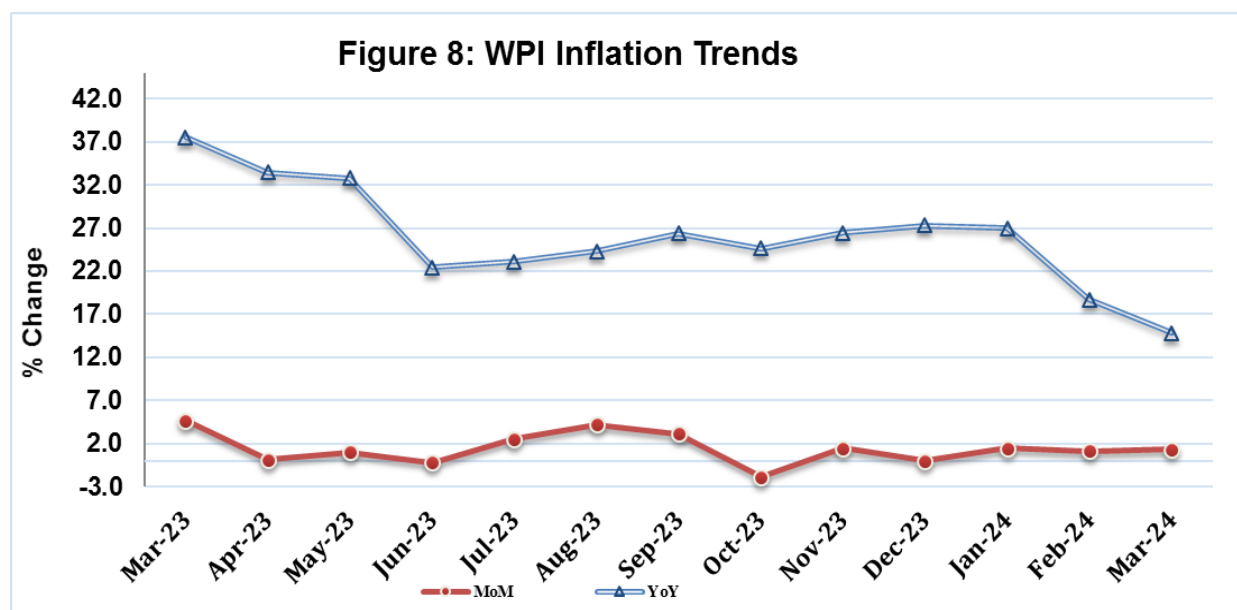
Increased: Fresh Fruits (33.12%), Edible Roots / Potatoes (26.41%), Concrete Mixture (11.60%), Vegetables (10.96%), Cotton Fabrics (7.57%), Stimulant & Spice Crops (6.48%), Electrical Energy (5.68%), Maize (5.16%), Sugar Crops (4.82%), Sorghum / Jowar (4.15%), Fertilizers (3.98%), Meat of Animals (3.65%), Millet / Bajra (3.20%), Woven Fabrics (2.10%), Motor Spirit (2.06%) and Electric Wires (1.87%).

Decreased: Poultry (7.66%), Printing Paper (3.55%), Air Conditioners (2.94%), Wheat Flour (2.2%), Wheat (2.06%), Coffee & Tea (1.99%), Furnace Oil (1.48%), Dry Fruits (0.50%), Cement (0.24%), Raw Animal Materials / Wool (0.16%), Dried Fruits & Nuts (0.05%) and Spices (0.04%).

YEAR-ON-YEAR: Top few commodities which varied from previous year are given below:

Increased: Unmanufactured Tobacco (89.77%), Vegetables (74.29%), Spices (71.27%), Natural Gas Liquefied (71.24%), Concrete Mixture (61.59%), Engines & Motors (58.83%), Sugar Crops (51.56%), Electrical Energy (49.43%), Edible Roots / Potatoes (44.19%), Sugar Refined (38.54%), Insecticides (35.48%), Quilts (33.93%), Fertilizers (32.29%), Glass Sheets (31.83%), Dyeing Material (30.82%), Other Glass Articles (30.50%) and Fruit Juices (29.89%).

Decreased: Vegetable Ghee (21.09%), Other Oil Seeds (18.55%), Maize (15.19%), Chemicals (14.94%), Printing Paper (13.17%), Cotton Seeds (10.03%), Fresh Fruits (7.90%), Vegetable Oils Refined (7.72%), Stimulant & Spice Crops (6.49%), Diesel Oil (4.67%) and Millet / Bajra (4.28%).



Annexure A:CPI (Urban) Index Numbers by Commodity Groups & Commodities (2015-16=100)

Item and Specification	Weight	Index Numbers			% Change in Mar 2024 over			
		Mar 24	Feb 24	Mar 23	Feb 2024	Mar 2023		
General	100.0000	259.47	255.82	212.85	+	1.43	+	21.90
Food and non-alcoholic Beverage	30.4215	286.46	278.76	244.66	+	2.76	+	17.08
01 Wheat	0.6120	356.85	364.20	343.55	-	2.02	+	3.87
02 Wheat flour	3.0075	351.77	356.36	265.12	-	1.29	+	32.68
03 Wheat products	0.0936	325.81	324.80	278.52	+	0.31	+	16.98
04 Besan	0.0830	217.59	216.30	219.09	+	0.60	-	0.68
05 Rice	1.1804	328.95	328.70	288.08	+	0.08	+	14.19
06 Bakery and confectionary	0.4770	266.52	268.56	234.47	-	0.76	+	13.67
07 Nimco	0.1224	285.10	281.92	246.08	+	1.13	+	15.86
08 Meat	2.0411	288.20	277.13	235.41	+	3.99	+	22.42
09 Chicken	1.3631	295.01	312.30	293.32	-	5.54	+	0.58
10 Fish	0.3855	188.89	188.79	150.96	+	0.05	+	25.13
11 Milk fresh	7.1070	236.51	236.22	211.20	+	0.12	+	11.98
12 Milk products	0.6407	244.77	244.44	212.14	+	0.14	+	15.38
13 Milk powder	0.3106	251.64	251.65	208.81	+	0.00	+	20.51
14 Eggs	0.5083	311.74	320.66	281.66	-	2.78	+	10.68
15 Butter	0.0932	352.02	350.46	318.67	+	0.45	+	10.47
16 Mustard oil	0.0120	286.10	288.39	339.69	-	0.79	-	15.78
17 Cooking oil	1.1016	298.11	308.68	385.10	-	3.42	-	22.59
18 Vegetable ghee	1.0324	302.05	304.50	378.16	-	0.80	-	20.13
19 Dry fruits	0.3299	281.90	282.08	226.46	-	0.06	+	24.48
20 Fresh fruits	1.4363	249.72	204.85	260.54	+	21.90	-	4.15
21 Pulse masoor	0.1624	230.68	229.45	189.33	+	0.54	+	21.84
22 Pulse moong	0.1697	188.95	185.33	173.37	+	1.95	+	8.99
23 Pulse mash	0.1152	231.75	231.11	182.46	+	0.28	+	27.01
24 Pulse gram	0.1660	214.70	214.36	212.69	+	0.16	+	0.95
25 Gram whole	0.0912	264.20	259.23	265.20	+	1.92	-	0.38
26 Beans	0.0408	350.16	349.03	260.30	+	0.32	+	34.52
27 Potatoes	0.4496	285.11	230.58	209.60	+	23.65	+	36.03
28 Onions	0.5928	593.72	463.69	322.57	+	28.04	+	<u>84.06</u>
29 Tomatoes	0.3459	351.06	230.75	121.71	+	<u>52.14</u>	+	<u>188.44</u>
30 Fresh vegetables	1.5306	297.07	263.32	191.27	+	12.82	+	<u>55.31</u>
31 Sugar	1.1130	231.78	230.28	168.83	+	0.65	+	37.29
32 Gur	0.0379	234.11	233.76	162.53	+	0.15	+	44.04
33 Honey	0.1017	182.53	182.30	171.43	+	0.13	+	6.47
34 Sweetmeat	0.3535	293.74	290.28	238.80	+	1.19	+	23.01
35 Ice cream	0.1044	198.48	198.48	184.05	+	0.00	+	7.84
36 Condiments and Spices	1.3340	320.44	318.53	214.94	+	0.60	+	49.08
37 Dessert preparation	0.0419	264.44	264.44	243.94	+	0.00	+	8.40
38 Tea	0.8427	333.43	333.34	325.18	+	0.03	+	2.54
39 Beverages	0.8906	244.57	240.37	191.53	+	1.75	+	27.69
Alcoholic Beverages, Tobacco	0.8540	386.20	386.05	374.90	+	0.04	+	3.01
40 Cigarettes	0.7167	384.62	384.62	382.60	+	0.00	+	0.53
41 Pan prepared	0.1373	394.44	393.51	334.70	+	0.24	+	17.85
Clothing and footwear	8.0096	216.67	214.12	194.04	+	1.19	+	11.66
42 Cotton cloth	2.2227	248.80	246.53	219.65	+	0.92	+	13.27
43 Woolen cloth	0.8361	215.69	213.45	189.24	+	1.05	+	13.98
44 Readymade garments	1.3196	198.36	194.06	175.47	+	2.22	+	13.04
45 Woolen readymade garments	0.4307	230.68	230.65	186.87	+	0.01	+	23.44
46 Tailoring	1.0741	215.73	209.18	194.50	+	3.13	+	10.92
47 Hosiery	0.4070	206.99	205.69	188.24	+	0.63	+	9.96
48 Dopatta	0.1713	178.53	177.34	160.22	+	0.67	+	11.43
49 Cleaning and laundering	0.0665	252.50	252.12	224.07	+	0.15	+	12.69
50 Footwear	1.4816	187.39	187.36	180.76	+	0.02	+	3.67
Housing, water, Elec., Gas an	27.0332	250.13	247.13	173.72	+	1.21	+	43.98
51 House rent	19.2558	160.17	160.17	152.02	+	0.00	+	5.36
52 Construction input items	0.3765	259.24	259.04	232.51	+	0.08	+	11.50
53 Construction wage rates	0.2025	213.53	212.27	198.02	+	0.59	+	7.83
54 Water supply	0.5269	199.06	199.06	172.57	+	0.00	+	15.35
55 Garbage collection	0.1064	246.85	243.95	209.09	+	1.19	+	18.06
56 Electricity charges	4.5562	339.66	323.15	196.25	+	5.11	+	<u>73.08</u>
57 Gas charges	1.0807	1479.08	1479.08	353.22	+	0.00	+	<u>318.74</u>
58 Liquefied Hydrocarbons	0.5064	343.26	333.60	348.85	+	2.90	-	1.60
59 Solid Fuel	0.4218	203.06	202.61	178.96	+	0.22	+	13.47

Annexure A:CPI (Urban) Index Numbers by Commodity Groups & Commodities (2015-16=100)

Item and Specification	Weight	Index Numbers			% Change in Mar 2024 over			
		Mar 24	Feb 24	Mar 23	Feb 2024	Mar 2023		
<i>Furnishing and household equipment</i>	4.0937	256.37	255.20	217.40	+	0.46	+	17.93
60 Furniture and furnishing	0.4750	243.45	241.90	199.22	+	0.64	+	22.20
61 Carpets	0.0308	148.03	148.03	140.05	+	0.00	+	5.70
62 Household textiles	0.3420	182.73	182.52	166.48	+	0.12	+	9.76
63 Household equipments	1.0032	251.94	251.31	221.57	+	0.25	+	13.71
64 Plastic products	0.0536	205.44	204.50	174.77	+	0.46	+	17.55
65 Major tools & equipments	0.0084	222.76	221.18	204.25	+	0.71	+	9.06
66 Washing soap/detergents/match	1.4112	322.47	320.57	259.69	+	0.59	+	24.17
67 Household servant	0.7695	189.91	189.12	174.47	+	0.42	+	8.85
<i>Health</i>	2.3098	236.76	235.03	197.03	+	0.74	+	20.16
68 Drugs and medicines	1.0735	253.95	250.96	203.87	+	1.19	+	24.56
69 Therapeutic Appliances and Equipment	0.0054	147.55	147.54	128.98	+	0.01	+	14.40
70 Doctor (MBBS) clinic fee	0.4044	293.79	292.69	254.96	+	0.38	+	15.23
71 Dental services	0.0156	177.03	176.43	153.74	+	0.34	+	15.15
72 Medical tests	0.2367	184.89	184.54	170.22	+	0.19	+	8.62
73 Hospitals services	0.5742	188.30	187.86	156.31	+	0.23	+	20.47
<i>Transport</i>	6.1368	305.33	306.81	281.79	-	0.48	+	8.35
74 Motor vehicles	0.8097	255.69	254.54	247.09	+	0.45	+	3.48
75 Motor vehicle accessories	0.1941	252.48	250.42	226.07	+	0.82	+	11.68
76 Motor fuel	2.9088	376.07	369.78	360.75	+	1.70	+	4.25
77 Mechanical services	0.4290	219.88	219.13	192.33	+	0.34	+	14.32
78 Motor vehicle tax	0.0482	148.53	148.53	148.53	+	0.00	+	0.00
79 Transport services	1.7470	241.73	258.34	198.25	-	6.43	+	21.93
<i>Communication</i>	2.3536	138.77	138.73	122.10	+	0.03	+	13.65
80 Postal services	0.0190	207.37	207.37	190.07	+	0.00	+	9.10
81 Communication apparatus	0.4524	190.87	190.69	175.72	+	0.09	+	8.62
82 Communication Services	1.8822	125.55	125.55	108.53	+	0.00	+	15.68
<i>Recreation and culture</i>	1.7301	246.16	246.00	200.57	+	0.07	+	22.73
83 Recreation and culture	0.6478	148.85	148.71	143.02	+	0.09	+	4.08
84 Text books	0.6655	314.48	314.48	235.21	+	0.00	+	33.70
85 Newspapers	0.0716	211.87	211.87	157.93	+	0.00	+	34.15
86 stationery	0.3452	304.15	303.66	250.61	+	0.16	+	21.36
<i>Education</i>	4.8807	188.09	187.42	168.64	+	0.36	+	11.53
87 Education	4.8807	188.09	187.42	168.64	+	0.36	+	11.53
<i>Restaurants and hotels</i>	7.4050	265.74	263.47	225.06	+	0.86	+	18.08
88 Readymade food	5.5235	273.29	270.36	233.21	+	1.08	+	17.19
89 Marriage Hall Charges	1.7514	249.33	249.07	206.64	+	0.10	+	20.66
90 Accommodation Services	0.1301	166.21	164.77	127.26	+	0.87	+	30.61
<i>Misc. goods and services</i>	4.7720	271.71	269.89	224.93	+	0.67	+	20.80
91 Personal Grooming Services	0.8001	239.46	236.25	199.48	+	1.36	+	20.04
92 Electrical Appliances for Per	0.0465	161.72	161.72	149.12	+	0.00	+	8.45
93 Appliances/Articles/Products	2.9807	257.89	257.25	207.49	+	0.25	+	24.29
94 Personal Effects n.e.c.	0.9447	348.03	343.56	305.23	+	1.30	+	14.02

Annexure B:CPI (Rural) Index Numbers by Commodity Groups & Commodities (2015-16=100)

Item and Specification	Weight	Index Numbers			% Change in Mar 2024 over	
		Mar 24	Feb 24	Mar 23	Feb 2024	Mar 2023
General	100.0000	272.00	266.33	228.63	+ 2.13	+ 18.97
Food and non-alcoholic Beverage	40.8668	301.11	292.14	256.54	+ 3.07	+ 17.37
01 Wheat	3.4736	367.50	372.99	343.15	- 1.47	+ 7.10
02 Wheat Flour	3.4297	364.64	367.13	259.15	- 0.68	+ 40.71
03 Wheat Products	0.1068	333.97	330.24	281.62	+ 1.13	+ 18.59
04 Besan	0.0728	232.68	229.39	230.09	+ 1.43	+ 1.13
05 Rice	1.5501	436.61	437.24	364.07	- 0.14	+ 19.92
06 Bakery and Confectionary	0.3702	307.88	303.80	249.60	+ 1.34	+ 23.35
07 Nimco	0.0774	296.53	288.81	242.30	+ 2.67	+ 22.38
08 Meat	1.7146	290.77	282.91	235.90	+ 2.78	+ 23.26
09 Chicken	1.4641	312.71	325.70	313.63	- 3.99	- 0.29
10 Fish	0.2640	206.94	206.75	167.41	+ 0.09	+ 23.61
11 Milk fresh	10.3803	237.02	236.79	206.71	+ 0.10	+ 14.66
12 Milk products	0.9624	241.11	238.50	195.95	+ 1.09	+ 23.05
13 Milk powder	0.1062	218.50	218.29	180.51	+ 0.10	+ 21.05
14 Eggs	0.5665	300.78	314.74	275.44	- 4.44	+ 9.20
15 Butter	0.3333	263.54	259.72	213.94	+ 1.47	+ 23.18
16 Mustard oil	0.0136	304.20	306.49	345.54	- 0.75	- 11.96
17 Cooking oil	0.6011	323.20	323.14	412.64	+ 0.02	- 21.68
18 Vegetable ghee	2.3764	328.60	327.16	406.96	+ 0.44	- 19.25
19 Dry fruits	0.2496	322.46	322.42	268.71	+ 0.01	+ 20.00
20 Fresh fruits	1.4505	266.03	212.26	297.84	+ 25.33	- 10.68
21 Pulse Masoor	0.2076	244.31	245.96	209.80	- 0.67	+ 16.45
22 Pulse Moong	0.2510	205.17	203.00	189.85	+ 1.07	+ 8.07
23 Pulse Mash	0.1465	237.67	241.02	189.83	- 1.39	+ 25.20
24 Pulse Gram	0.2751	217.45	217.63	218.61	- 0.08	- 0.53
25 Gram Whole	0.1116	276.61	278.22	271.72	- 0.58	+ 1.80
26 Beans	0.0896	381.90	375.06	276.32	+ 1.82	+ 38.21
27 Potatoes	0.7437	297.25	235.49	217.32	+ 26.23	+ 36.78
28 Onions	0.8965	575.32	447.73	337.09	+ 28.50	+ <u>70.67</u>
29 Tomatoes	0.5069	349.18	222.53	123.23	+ <u>56.91</u>	+ <u>183.36</u>
30 Fresh Vegetables	2.0947	326.58	288.69	194.82	+ 13.12	+ <u>67.63</u>
31 Sugar	2.0296	233.00	232.27	165.93	+ 0.31	+ 40.42
32 Gur	0.1522	237.89	237.73	165.81	+ 0.07	+ 43.47
33 Honey	0.0296	188.83	185.42	170.80	+ 1.84	+ 10.56
34 Sweetmeat	0.3967	276.27	272.16	230.26	+ 1.51	+ 19.98
35 Ice Cream	0.0568	197.95	197.95	161.90	+ 0.00	+ 22.27
36 Condiments and Spices	1.4919	286.78	281.04	255.17	+ 2.04	+ 12.39
37 Dessert Preparation	0.0133	268.52	269.02	240.83	- 0.19	+ 11.50
38 Tea	1.2566	337.75	337.47	279.12	+ 0.08	+ 21.01
39 Beverages	0.5537	235.14	231.44	185.21	+ 1.60	+ 26.96
Alcoholic Beverages, Tobacco	1.2786	345.24	345.01	331.19	+ 0.07	+ 4.24
40 Cigarettes	1.2364	346.06	345.83	333.30	+ 0.07	+ 3.83
41 Pan Prepared	0.0422	320.98	320.98	269.41	+ 0.00	+ 19.14
Clothing and footwear	9.4826	242.74	237.58	199.63	+ 2.17	+ 21.59
42 Cotton Cloth	2.8381	261.63	253.57	218.06	+ 3.18	+ 19.98
43 Woolen Cloth	1.0959	239.27	233.21	192.85	+ 2.60	+ 24.07
44 Readymade Garments	1.1345	221.82	218.63	191.15	+ 1.46	+ 16.04
45 Woolen Readymade Garments	0.5401	268.35	268.35	193.86	+ 0.00	+ 38.42
46 Tailoring	1.2999	230.00	222.00	192.79	+ 3.60	+ 19.30
47 Hosiery	0.4322	320.84	319.41	264.67	+ 0.45	+ 21.22
48 Dopatta	0.2078	228.45	222.85	179.95	+ 2.51	+ 26.95
49 Cleaning and Laundering	0.0176	248.77	248.77	212.92	+ 0.00	+ 16.84
50 Footwear	1.9165	214.41	212.54	174.87	+ 0.88	+ 22.61
Housing, water, Elec., Gas an	18.4853	231.25	226.28	190.01	+ 2.20	+ 21.70
51 House Rent	8.6110	166.06	166.06	155.09	+ 0.00	+ 7.07
52 Construction Input Items	0.6306	230.32	229.41	203.21	+ 0.40	+ 13.34
53 Construction Wage Rates	0.2526	224.84	222.61	200.62	+ 1.00	+ 12.07
54 Water Supply	0.0645	292.34	292.34	222.06	+ 0.00	+ 31.65
55 Garbage Collection	0.0080	189.52	189.52	169.61	+ 0.00	+ 11.74
56 Electricity Charges	3.4431	339.66	323.15	196.25	+ 5.11	+ <u>73.08</u>
57 Liquefied Hydrocarbons	0.9994	324.29	311.49	303.74	+ 4.11	+ 6.77
58 Solid Fuel	4.4761	252.20	247.49	224.10	+ 1.90	+ 12.54

Annexure B:CPI (Rural) Index Numbers by Commodity Groups & Commodities (2015-16=100)

Item and Specification	Weight	Index Numbers			% Change in Mar 2024 over			
		Mar 24	Feb 24	Mar 23	Feb 2024	Mar 2023		
<i>Furnishing and household equipment</i>	4.1031	279.16	275.31	224.41	+	1.40	+	24.40
59 Furniture and Furnishing	0.5786	257.30	250.95	206.33	+	2.53	+	24.70
60 Household Textiles	0.4382	220.57	220.57	188.39	+	0.00	+	17.08
61 Household Equipments	1.2774	270.82	266.48	222.53	+	1.63	+	21.70
62 Plastic Products	0.0776	262.20	259.04	216.23	+	1.22	+	21.26
63 Major Tools and Equipments	0.0324	219.48	218.54	198.64	+	0.43	+	10.49
64 Washing Soaps, Detergents and Match Box	1.6989	309.90	306.19	242.13	+	1.21	+	27.99
<i>Health</i>	3.5141	236.60	235.75	198.64	+	0.36	+	19.11
65 Drugs and Medicines	1.5792	271.02	269.76	218.40	+	0.47	+	24.09
66 Doctor Clinic Fee	0.5128	281.01	281.01	243.97	+	0.00	+	15.18
67 Dental Services	0.0181	188.38	188.38	176.77	+	0.00	+	6.57
68 Medical Tests	0.3967	211.47	211.47	182.77	+	0.00	+	15.70
69 Hospitals Services	1.0073	170.77	169.83	151.24	+	0.55	+	12.91
<i>Transport</i>	5.5580	321.67	320.47	277.55	+	0.37	+	15.90
70 Motor Vehicles	0.7305	192.76	192.76	182.26	+	0.00	+	5.76
71 Motor Vehicles Accessories	0.1572	258.60	258.57	225.14	+	0.01	+	14.86
72 Motor Fuels	2.4932	380.01	373.15	363.68	+	1.84	+	4.49
73 Mechanical Services	0.3645	221.45	221.45	192.96	+	0.00	+	14.76
74 Motor Vehicle Tax	0.0174	150.93	150.93	150.93	+	0.00	+	0.00
75 Transport Services	1.7952	320.62	326.43	219.69	-	1.78	+	45.94
<i>Communication</i>	1.9940	127.82	127.63	109.70	+	0.15	+	16.52
76 Postal Services	0.0070	179.32	179.32	149.43	+	0.00	+	20.00
77 Communication Apparatus	0.3362	156.53	155.38	143.80	+	0.74	+	8.85
78 Communication Services	1.6508	121.76	121.76	102.58	+	0.00	+	18.70
<i>Recreation and culture</i>	1.3764	276.61	276.15	215.91	+	0.17	+	28.11
79 Recreation and Culture	0.4763	218.09	217.18	202.40	+	0.42	+	7.75
80 Text Books	0.5047	327.72	327.72	218.26	+	0.00	+	<u>50.15</u>
81 Newspapers	0.0230	242.52	242.52	165.72	+	0.00	+	46.34
82 Stationery	0.3724	284.31	283.78	233.10	+	0.19	+	21.97
<i>Education</i>	2.1342	185.46	181.78	160.90	+	2.02	+	15.26
83 Education	2.1342	185.46	181.78	160.90	+	2.02	+	15.26
<i>Restaurants and hotels</i>	6.1895	267.45	265.44	222.37	+	0.76	+	20.27
84 Readymade Food	3.8001	294.27	291.48	245.00	+	0.96	+	20.11
85 Marriage Hall Charges	2.2525	231.55	230.84	191.09	+	0.31	+	21.17
86 Accommodation Services	0.1369	113.40	112.13	108.81	+	1.13	+	4.22
<i>Misc. goods and services</i>	5.0174	284.12	281.49	229.69	+	0.93	+	23.70
87 Personal Grooming Services	1.5363	285.65	284.25	237.11	+	0.49	+	20.47
88 Appliances/Articles/Products	2.2746	242.67	241.02	182.08	+	0.68	+	33.28
89 Personal Effects n.e.c.	1.2065	360.29	354.30	310.02	+	1.69	+	16.22

Annexure C: Wholesale Price Indices by Major Groups & Commodities (2015-16=100)

Item and Specification	Weight	Index Numbers			% Change in Mar 2024 over			
		Mar 24	Feb 24	Mar 23	Feb 2024	Mar 2023		
General	100.0000	317.95	314.02	277.01	+	1.25	+	14.78
Agriculture Forestry & Fisher	25.7674	299.87	292.08	265.41	+	2.67	+	12.98
001 Wheat	0.6297	358.29	365.81	344.97	-	2.06	+	3.86
002 Maize	0.6764	245.54	233.49	289.51	+	5.16	-	15.19
003 Rice	2.4413	359.58	359.52	307.87	+	0.02	+	16.80
004 Sorghum / Jowar	0.0214	298.65	286.74	283.41	+	4.15	+	5.38
005 Millet / Bajra	0.0374	250.79	243.02	262.00	+	3.20	-	4.28
006 Vegetables	1.2441	449.12	404.77	257.68	+	10.96	+	<u>74.29</u>
007 Fresh Fruits	1.5144	295.96	222.33	321.33	+	33.12	-	7.90
008 Dry Fruits	0.2478	321.99	323.60	290.18	-	0.50	+	10.96
009 Cotton Seeds	1.1511	175.59	174.64	195.17	+	0.54	-	10.03
010 Other Oil Seeds	0.0722	279.49	274.44	343.13	+	1.84	-	18.55
011 Edible Roots / Potatoes	0.2540	359.11	284.09	249.06	+	26.41	+	44.19
012 Stimulant & Spice Crops	0.1634	418.71	393.24	447.76	+	6.48	-	6.49
013 Pulses	0.4901	271.48	268.09	255.50	+	1.26	+	6.25
014 Sugar Crops	1.0725	306.05	291.97	201.93	+	4.82	+	<u>51.56</u>
015 Fibre Crops	5.3169	405.11	405.24	367.69	-	0.03	+	10.18
016 Unmanufactured Tobacco	0.0742	546.43	538.69	287.94	+	1.44	+	<u>89.77</u>
017 Poultry	0.5633	286.01	309.72	287.68	-	7.66	-	0.58
018 Raw Milk from Bovine Animals	7.0279	226.55	226.55	200.50	+	0.00	+	12.99
019 Eggs	0.5034	312.10	311.66	274.22	+	0.14	+	13.81
020 Raw Animal Materials / Wool	0.0351	136.07	136.29	137.77	-	0.16	-	1.23
021 Hides, Skins & Fur Skins, Raw	0.4834	49.34	48.52	51.13	+	1.69	-	3.50
022 Fuel Wood in Logs	0.0179	185.87	183.72	176.83	+	1.17	+	5.11
023 Fish Live Fresh or Chilled	1.7295	216.65	215.77	192.81	+	0.41	+	12.36
Ores/Minerals, Elec., Gas & Water	12.0069	387.71	378.04	245.85	+	2.56	+	<u>57.70</u>
024 Coal not Agglomerated	0.7508	194.29	194.29	180.41	+	0.00	+	7.69
025 Natural Gas Liquefied	5.7065	419.75	419.13	245.13	+	0.15	+	<u>71.24</u>
026 Salt & Pure Sodium Chloride	0.0584	354.57	353.52	285.88	+	0.30	+	24.03
027 Electrical Energy	5.4912	381.22	360.73	255.12	+	5.68	+	49.43
Food, Beverages, Tobacco, Textil	31.1122	263.95	262.45	243.18	+	0.57	+	8.54
Food Products, Beverages & Tobacco	20.0718	279.03	277.88	254.33	+	0.41	+	9.71
028 Meat of Animals	3.4559	286.10	276.02	228.17	+	3.65	+	25.39
029 Vegetables & Fruit Juice	0.0058	238.43	237.78	208.76	+	0.27	+	14.21
030 Dried Fruits & Nuts	0.1733	384.20	384.39	330.71	-	0.05	+	16.17
031 Fruit Juices	0.3880	257.02	256.15	197.88	+	0.34	+	29.89
032 Vegetable Oils Refined	1.9242	271.88	271.46	294.61	+	0.15	-	7.72
033 Vegetable Ghee	1.5632	312.04	311.04	395.45	+	0.32	-	21.09
034 Oil Cakes	0.9611	267.35	265.53	254.69	+	0.69	+	4.97
035 Processed Liquid Milk	4.4437	255.81	255.53	224.99	+	0.11	+	13.70
036 Milk & Cream in Solid Form	0.0316	258.39	258.39	218.30	+	0.00	+	18.36
037 Ice Cream	0.0047	199.18	198.75	182.12	+	0.22	+	9.37
038 Dairy Products N.E.C	0.0117	276.46	276.13	221.79	+	0.12	+	24.65
039 Wheat Flour	2.3034	350.16	358.03	311.50	-	2.20	+	12.41
040 Other Cereal Flour	0.0604	232.71	229.68	233.45	+	1.32	-	0.32
041 Sugar Refined	1.7975	235.22	233.79	169.79	+	0.61	+	38.54
042 Chocolate	0.0139	122.88	122.88	97.97	+	0.00	+	25.43
043 Sugar Confectionary	0.0738	236.84	236.84	208.55	+	0.00	+	13.57
044 Coffee & Tea	0.7303	271.36	276.86	242.55	-	1.99	+	11.88
045 Spices	0.1449	371.24	371.38	216.76	-	0.04	+	<u>71.27</u>
046 Other Food Products	0.0336	231.88	231.43	156.61	+	0.19	+	<u>48.06</u>
047 Mineral Water	0.0207	212.01	212.01	182.77	+	0.00	+	16.00
048 Beverages	0.6303	258.68	255.78	210.19	+	1.13	+	23.07
049 Tobacco Products	1.2998	259.58	259.58	259.58	+	0.00	+	0.00
Textiles & Apparels	10.3289	240.03	237.73	226.64	+	0.97	+	5.91
050 Cotton Yarn	5.2491	239.61	239.61	239.61	+	0.00	+	0.00
051 Nylon Yarn	0.1719	95.24	95.24	95.24	+	0.00	+	0.00
052 Blended Yarn	0.1689	148.12	148.12	148.12	+	0.00	+	0.00
053 Woven Fabrics	0.0128	243.83	238.82	192.24	+	2.10	+	26.84
054 Cotton Fabrics	0.6343	322.82	300.10	262.93	+	7.57	+	22.78
055 Other Fabrics	1.1016	213.57	210.56	205.72	+	1.43	+	3.82
056 Silk & Reyon Fabrics	0.7350	354.49	350.15	298.48	+	1.24	+	18.77
057 Towels	0.1235	195.75	193.86	181.11	+	0.97	+	8.08

Annexure C: Wholesale Price Indices by Major Groups & Commodities (2015-16=100)

Item and Specification	Weight	Index Numbers			% Change in Mar 2024 over	
		Mar 24	Feb 24	Mar 23	Feb 2024	Mar 2023
058 Blankets	0.0029	145.65	145.65	138.45	+ 0.00	+ 5.20
059 Bed Sheets	0.0913	167.37	167.07	160.53	+ 0.18	+ 4.26
060 Quilts	0.0019	234.52	234.52	175.10	+ 0.00	+ 33.93
061 Woolen Carpets	0.0383	173.86	173.86	166.01	+ 0.00	+ 4.73
062 Synthetic Carpets	0.0566	150.83	150.83	132.43	+ 0.00	+ 13.89
063 Hosiery Products	0.8832	192.58	191.34	178.85	+ 0.65	+ 7.68
064 Readymade Garments	1.0576	237.17	235.81	205.23	+ 0.58	+ 15.56
Leather Products	0.7115	185.68	185.68	168.62	+ 0.00	+ 10.12
065 Leather Without Hair	0.2973	181.35	181.35	157.44	+ 0.00	+ 15.19
066 Other Leather N.E.C	0.2567	158.95	158.95	153.47	+ 0.00	+ 3.57
067 Footwears	0.1575	237.41	237.41	214.40	+ 0.00	+ 10.73
Other Transportable Goods	22.3979	351.98	350.83	327.07	+ 0.33	+ 7.62
068 Timber	0.0165	228.98	228.16	203.41	+ 0.36	+ 12.57
069 Printing Paper	0.4279	230.55	239.03	265.53	- 3.55	- 13.17
070 Hard Board	0.1579	209.29	209.29	209.29	+ 0.00	+ 0.00
071 Motor Spirit	1.6268	397.40	389.39	383.04	+ 2.06	+ 3.75
072 Diesel Oil	5.4849	361.59	359.48	379.31	+ 0.59	- 4.67
073 Kerosene Oil	0.2151	371.33	367.92	370.68	+ 0.93	+ 0.18
074 Furnace Oil	3.2664	605.83	614.90	528.22	- 1.48	+ 14.69
075 Mobil Oil	0.7114	236.05	236.05	217.14	+ 0.00	+ 8.71
076 Chemicals	1.7720	278.10	276.39	326.95	+ 0.62	- 14.94
077 Dyeing Material	0.1539	220.27	220.27	168.38	+ 0.00	+ 30.82
078 Fertilizers	2.8657	270.64	260.27	204.58	+ 3.98	+ 32.29
079 Pesticides	0.2763	185.91	185.75	157.58	+ 0.09	+ 17.98
080 Insecticides	0.1276	151.05	151.05	111.49	+ 0.00	+ 35.48
081 Paints & Varnishes	0.1916	269.25	269.25	233.17	+ 0.00	+ 15.47
082 Medicines	1.1428	323.95	322.63	254.17	+ 0.41	+ 27.45
083 Soaps & Detergents	0.8168	226.33	226.33	198.03	+ 0.00	+ 14.29
084 Auto Tyres	0.2703	246.79	246.68	234.14	+ 0.04	+ 5.40
085 Plastic Products	0.4550	193.80	193.47	153.61	+ 0.17	+ 26.16
086 Glass sheets	0.2089	355.31	355.31	269.52	+ 0.00	+ 31.83
087 Other Glass Articles	0.1635	209.51	208.89	160.55	+ 0.30	+ 30.50
088 Ceramics & Sanitary Fixture	0.0244	207.38	207.33	179.64	+ 0.02	+ 15.44
089 Bricks, Blocks & Tiles	0.1566	190.36	190.36	169.05	+ 0.00	+ 12.61
090 Cement	1.8145	245.68	246.26	207.76	- 0.24	+ 18.25
091 Bed Foam	0.0006	332.28	332.28	295.62	+ 0.00	+ 12.40
092 Matches	0.0505	3323.96	3323.96	2824.35	+ 0.00	+ 17.69
Metal Product, Machinery & Equipment	8.7156	380.58	380.16	346.33	+ 0.11	+ 9.89
093 Steel Bar & Sheets	1.4615	352.08	350.88	360.64	+ 0.34	- 2.37
094 Pipe Fittings	0.0780	435.75	431.11	403.20	+ 1.08	+ 8.07
095 Steel Products	0.3879	245.52	244.73	216.96	+ 0.32	+ 13.16
096 Engines & Motors	0.0046	186.89	186.89	117.67	+ 0.00	+ <u>58.83</u>
097 Vacuum Pumps	0.0155	107.56	107.56	107.56	+ 0.00	+ 0.00
098 Air Conditioners	0.0049	304.78	314.01	304.70	- 2.94	+ 0.03
099 Cultivators	0.0551	361.67	361.67	282.23	+ 0.00	+ 28.15
100 Chuff Cutter	0.1293	504.72	504.72	471.00	+ 0.00	+ 7.16
101 Tractors	0.0028	297.43	297.43	244.39	+ 0.00	+ 21.70
102 Lathe Machines	0.0525	472.24	467.20	408.48	+ 1.08	+ 15.61
103 Concrete Mixture	0.0107	412.08	369.25	255.01	+ 11.60	+ <u>61.59</u>
104 Fridge,WashM,SewM,Fans,Iron	1.1645	279.22	279.26	238.92	- 0.01	+ 16.87
105 Electric Wires	0.0912	288.99	283.69	225.87	+ 1.87	+ 27.95
106 Lighting Equipments	1.4431	733.30	733.30	656.79	+ 0.00	+ 11.65
107 Radio & Television	0.1843	196.21	196.21	171.54	+ 0.00	+ 14.38
108 Motor Vehicles	0.0244	256.95	254.58	248.43	+ 0.93	+ 3.43
109 Motorcycles	0.2570	263.76	263.76	244.03	+ 0.00	+ 8.09
110 Bicycles	3.3483	308.80	308.80	275.89	+ 0.00	+ 11.93
