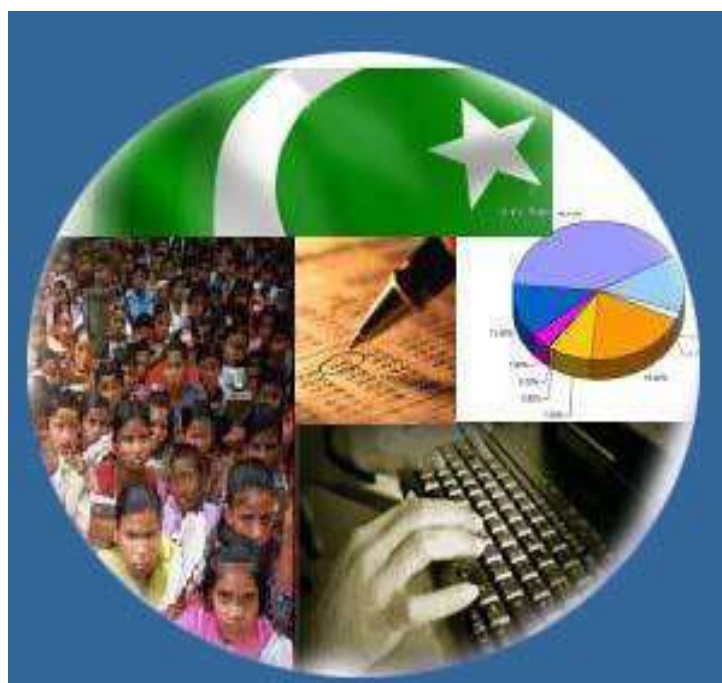




Monthly Review on Price Indices



June, 2022
(Base Year 2015-16)

Government of Pakistan
Ministry of Planning, Development & Special Initiatives
Pakistan Bureau of Statistics
Islamabad

PRICE STATISTICS TEAM

S#	Name	Designation
1.	Dr. Naeem Uz Zafar	Chief Statistician
2.	Syed Ejaz Wasti	Member (National Accounts/Prices)
3.	Dr. Bahrawar Jan	Deputy Director General
4.	Mr. Naseer Ahmad	Director
5.	Dr. Ahtasham Gul	Chief Statistical Officer
6.	Mr. Tauseef ul Hai Khan	Assistant Census Commissioner
7.	Mr. Adnan Shams	Statistical Officer
8.	Mr. Muhammad Mazhar	Statistical Officer
7.	Mr. Umar Farooq	Statistical Assistant
8.	Mrs. Madiha Gulfraz	Statistical Assistant
9.	Mrs. Humail Fatima	Statistical Assistant
10	Sheikh Muhammad Umar Farooq	Statistical Assistant
11.	Mr. Ansar Mahmood	Statistical Assistant

IT & SOFTWARE TEAM

1.	Mrs. Sobia Munawar	Director (DP)
2.	Mr. Muhammad Ehtesham	Director (DP)
3.	Mr. Raja Aurangzeb	Data Processing Assistant
4.	Mr. Muhammad Kibria	Data Processing Assistant
5.	Mr. Muhammad Irfan Bajwa	Data Processing Assistant

Inflation in Brief

- CPI inflation General**, increased by 21.3% on year-on-year basis in June 2022 as compared to an increase of 13.8% in the previous month and 9.7% in June 2021. On month-on-month basis, it increased by 6.3% in June 2022 as compared to an increase of 0.4% in the previous month and decrease of (-)0.3% in June 2021.
- CPI inflation Urban**, increased by 19.8% on year-on-year basis in June 2022 as compared to an increase of 12.4% in the previous month and 9.6% in June 2021. On month-on-month basis, it increased by 6.2% in June 2022 as compared to an increase of 0.3% in the previous month and decrease of (-)0.4% in June 2021.
- CPI inflation Rural**, increased by 23.6% on year-on-year basis in June 2022 as compared to an increase of 15.9% in the previous month and 9.7% in June 2021. On month-on-month basis, it increased by 6.6% in June 2022 as compared to an increase of 0.6% in the previous month and decrease of (-)0.1% in June 2021.
- SPI inflation** on YoY increased by 21.7% in June 2022 as compared to an increase of 14.1% a month earlier and an increase of 17.6% in June 2021. On MoM basis, it increased by 6.2% in June 2022 as compared to increase of 0.6% a month earlier and decrease of (-)0.4% in June 2021.
- WPI inflation** on YoY basis increased by 38.9% in June 2022 as compared to an increase of 29.6% a month earlier and an increase of 20.9% in June 2021. WPI inflation on MoM basis increased by 8.2% in June 2022 as compared to an increase of 1.4% a month earlier and increase of 0.9% in corresponding month i.e. June 2021.
- Figures 1 and 2 show graphically the yearly data of Table 1.a for Urban and Rural CPI while Table 1.1 shows "Period Average" and "YoY" percent changes in indices of three years.

Table 1.a General Inflation (%) (Base 2015-16)																		
PERIOD	CPI														SPI**		WPI	
	General						Food				Non-Food							
	National		Urban		Rural		Urban		Rural		Urban		Rural		YoY	MoM	YoY	MoM
	YoY	MoM	YoY	MoM	YoY	MoM	YoY	MoM	YoY	MoM	YoY	MoM	YoY	MoM				
Jul-20	9.3	2.5	7.8	2.2	11.6	3.0	15.1	3.0	17.8	4.0	3.9	1.7	6.5	2.2	13.7	3.0	3.2	5.4
Aug-20	8.2	0.6	7.1	0.8	9.9	0.4	11.3	-0.3	13.5	-0.9	4.8	1.5	6.8	1.5	11.7	0.9	3.3	1.3
Sep-20	9.0	1.5	7.7	1.3	11.1	2.0	12.4	3.0	15.8	3.8	5.0	0.2	7.2	0.3	12.0	2.1	4.3	1.0
Oct-20	8.9	1.7	7.3	1.3	11.3	2.4	13.9	2.8	17.7	4.3	3.6	0.3	5.8	0.5	12.3	3.0	5.1	2.9
Nov-20	8.3	0.8	7.0	0.6	10.5	1.1	13.0	1.6	16.1	2.0	3.4	0.1	5.5	0.2	9.9	1.1	5.0	-0.9
Dec-20	8.0	-0.7	7.0	-0.3	9.5	-1.2	12.6	-2.1	13.4	-3.4	3.8	0.7	6.1	1.0	9.1	-2.7	5.7	0.3
Jan-21	5.7	-0.2	5.0	-0.2	6.6	-0.3	7.3	-2.1	7.2	-2.2	3.7	1.1	6.1	1.5	7.7	-0.8	6.4	2.5
Feb-21	8.7	1.8	8.6	2.3	8.8	1.1	10.3	1.3	9.1	0.2	7.6	2.8	8.6	2.0	11.9	3.1	9.5	2.2
Mar-21	9.1	0.4	8.7	0.3	9.5	0.5	11.5	1.7	11.1	1.5	7.1	-0.6	8.1	-0.4	18.7	5.7	14.6	3.7
Apr-21	11.1	1.0	11.0	1.3	11.3	0.6	15.7	2.7	14.1	0.9	8.2	0.5	8.9	0.3	21.3	0.4	16.6	-0.4
May-21	10.9	0.1	10.8	0.2	10.9	-0.03	15.3	1.1	12.8	0.2	8.3	-0.3	9.2	-0.3	19.7	0.8	19.4	0.3
Jun-21	9.7	-0.3	9.6	-0.4	9.7	-0.1	11.0	-1.9	9.8	-0.8	8.8	0.5	9.7	0.6	17.6	-0.4	20.9	0.9
Jul-21	8.4	1.3	8.7	1.29	8.0	1.4	9.4	1.5	7.3	1.6	8.2	1.1	8.7	1.2	16.2	1.8	17.3	2.3
Aug-21	8.4	0.6	8.3	0.5	8.4	0.7	10.2	0.5	9.1	0.8	7.2	0.5	7.7	0.6	15.9	0.7	17.1	1.2
Sep-21	9.0	2.1	9.1	2.0	8.8	2.3	10.8	3.6	9.1	3.7	8.1	1.1	8.5	1.0	16.6	2.7	19.6	3.2
Oct-21	9.2	1.9	9.6	1.7	8.7	2.2	9.4	1.5	7.2	2.6	9.7	1.8	10.0	1.9	15.2	2.1	21.2	4.2
Nov-21	11.5	3.0	12.0	2.9	10.9	3.1	11.9	3.9	8.6	3.3	12.0	2.2	13.0	3.0	18.1	3.6	27.0	3.8
Dec-21	12.3	-0.02	12.7	0.3	11.6	-0.5	11.7	-2.3	9.0	-3.1	13.4	2.0	14.0	1.9	20.9	-0.4	26.2	-0.2
Jan-22	13.0	0.4	13.0	0.1	12.9	0.9	13.3	-0.8	11.8	0.4	12.8	0.6	13.9	1.4	20.9	-0.8	24.0	0.6
Feb-22	12.2	1.2	11.5	0.9	13.3	1.5	14.3	2.2	14.6	2.6	9.9	0.2	12.2	0.4	18.7	1.3	23.6	1.9
Mar-22	12.7	0.8	11.9	0.7	13.9	1.0	14.5	1.8	15.5	2.3	10.4	-0.1	12.5	-0.2	13.0	0.6	23.8	3.9
Apr-22	13.4	1.6	12.2	1.6	15.1	1.6	15.6	3.7	17.7	2.8	10.2	0.3	12.8	0.5	14.2	1.5	28.1	3.2
May-22	13.8	0.4	12.4	0.3	15.9	0.6	15.5	1.0	19.0	1.3	10.4	-0.1	13.1	0.0	14.1	0.6	29.6	1.4
June-22	21.3	6.3	19.8	6.2	23.6	6.6	24.0	5.3	27.0	6.0	17.3	6.8	20.4	7.1	21.7	6.2	38.9	8.2

** SPI for quintile 1. Digits 0.0* are due to rounding off.

Core inflation (NFNE)

7. Measured by **non-food non-energy Urban** increased by 11.5% on (YoY) basis in June, 2022 as compared to an increase of 9.7% in the previous month and 6.7% in June, 2021. On (MoM) basis, it increased by 2.0% in June, 2022 as compared to an increase of 0.7% in previous month, and an increase of 0.3% in corresponding month of last year i.e. June, 2021.
8. Measured by **non-food non-energy Rural** increased by 13.6% on (YoY) basis in June, 2022 as compared to an increase of 11.5% in the previous month and 7.3% in June, 2021. On (MoM) basis, it increased by 2.3% in June, 2022 as compared to an increase of 0.9% in previous month, and an increase of 0.4% in corresponding month of last year i.e. June, 2021.

Core inflation (Trimmed)

9. Measured by 20% **weighted trimmed mean Urban** increased by 16.7% on (YoY) basis in June, 2022 as compared to 10.7% in the previous month and 9.4% in June, 2021. On (MoM) basis, it increased by 3.5% in June, 2022 as compared to an increase of 0.8% in the previous month and an increase of 0.3% in corresponding month of last year i.e. June, 2021.
10. Measured by 20% **weighted trimmed mean Rural** increased by 19.1% on (YoY) basis in June, 2022 as compared to 14.1% in the previous month and by 9.8% in June, 2021. On (MoM) basis, it increased by 4.3% in June, 2022 as compared to an increase of 1.4% in the previous month and an increase of 0.6% in corresponding month of last year i.e. June, 2021.

Table 1.b Core Inflation (%) (Base 2015-16)

Period	NFNE				Trimmed			
	Urban		Rural		Urban		Rural	
	YoY	MoM	YoY	MoM	YoY	MoM	YoY	MoM
Jun-21	6.7	0.3	7.3	0.4	9.4	0.3	9.8	0.6
Jul-21	6.9	0.8	6.9	0.7	9.0	0.8	8.4	0.8
Aug-21	6.3	0.2	6.2	0.2	7.8	0.4	7.8	0.6
Sep-21	6.4	0.4	6.2	0.5	8.7	0.9	8.2	1.2
Oct-21	6.7	0.9	6.7	1.0	8.7	1.1	8.2	1.6
Nov-21	7.6	1.1	8.2	1.8	9.8	1.7	9.5	2.2
Dec-21	8.3	1.1	8.9	1.1	10.8	1.1	10.3	1.0
Jan-22	8.2	0.8	9.0	1.2	10.6	0.5	10.9	1.1
Feb-22	7.8	0.8	9.4	0.9	9.8	0.8	11.3	1.2
Mar-22	8.9	1.2	10.3	1.1	10.5	0.8	11.7	0.8
Apr-22	9.1	1.1	10.9	1.2	10.5	0.9	12.8	0.9
May-22	9.7	0.7	11.5	0.9	10.7	0.8	14.1	1.4
June-22	11.5	2.0	13.6	2.3	16.7	3.5	19.1	4.3

Table 1.1 Period Average and Y-o-Y % Change

INDEX	Average July- June % changes			June over June % changes		
	2021-2022	2020-2021	2019-2020	2021-2022	2020-2021	2019-2020
CPI (National)	12.15	8.90	10.74	21.32	9.65	8.59
CPI (Urban)	11.82	8.14	10.17	19.84	9.60	7.65
CPI (Rural)	12.65	10.04	11.63	23.55	9.73	10.03
SPI	17.10	13.83	13.74	21.65	17.58	11.51
WPI	24.91	9.41	10.24	38.94	20.85	0.93

Figure 1: Urban Inflation - YoY, Special Indices

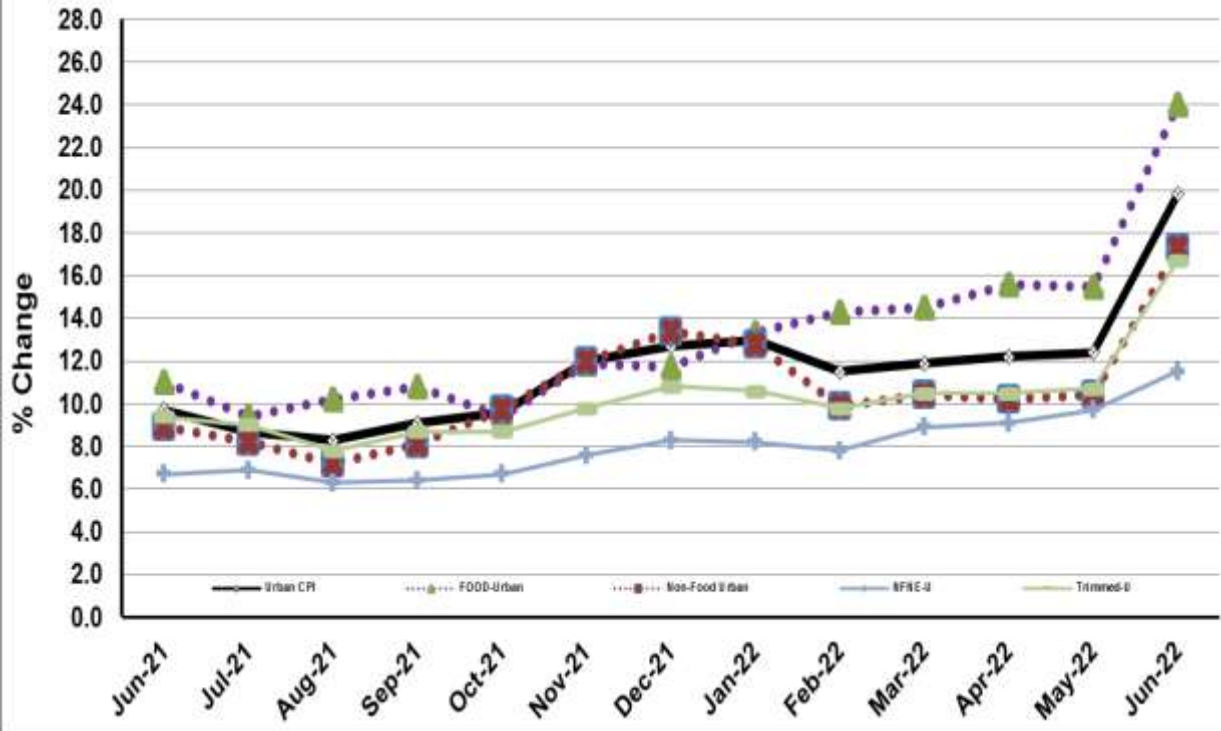


Figure 2: Rural Inflation - YoY, Special Indices

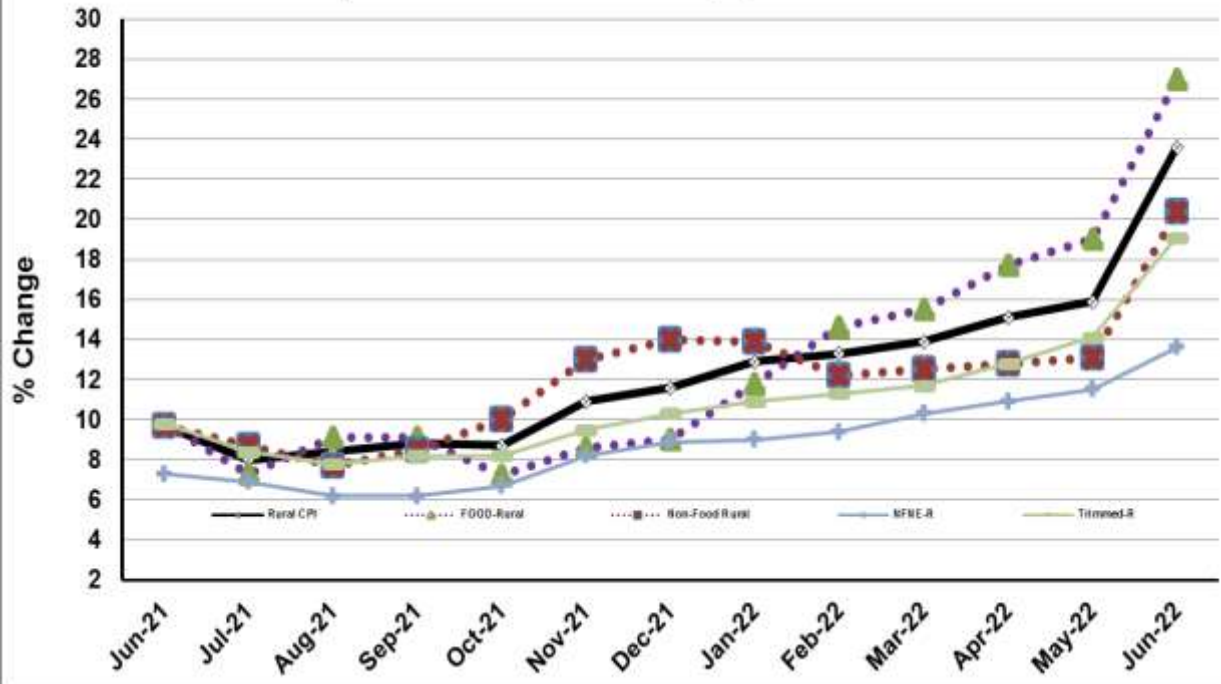


Figure 3: UCPI Inflation MoM, Special Indices

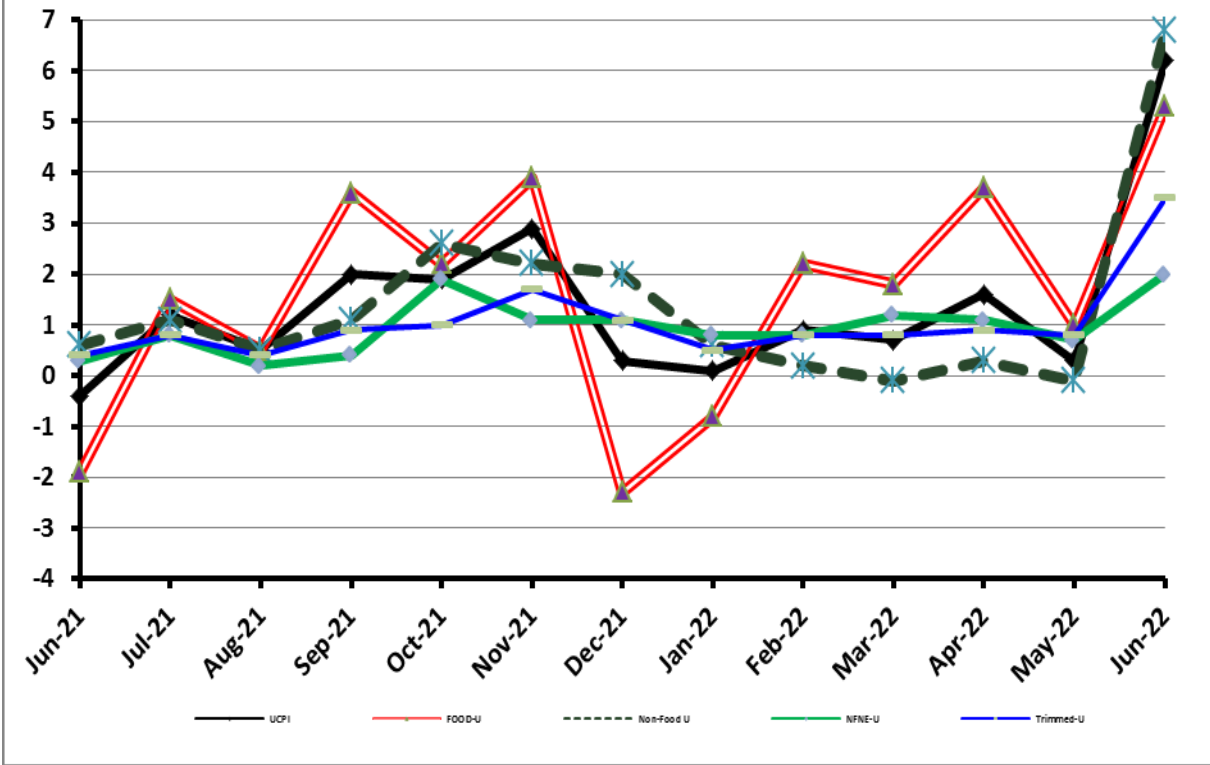


Figure 4: RPI Inflation MoM, Special Indices

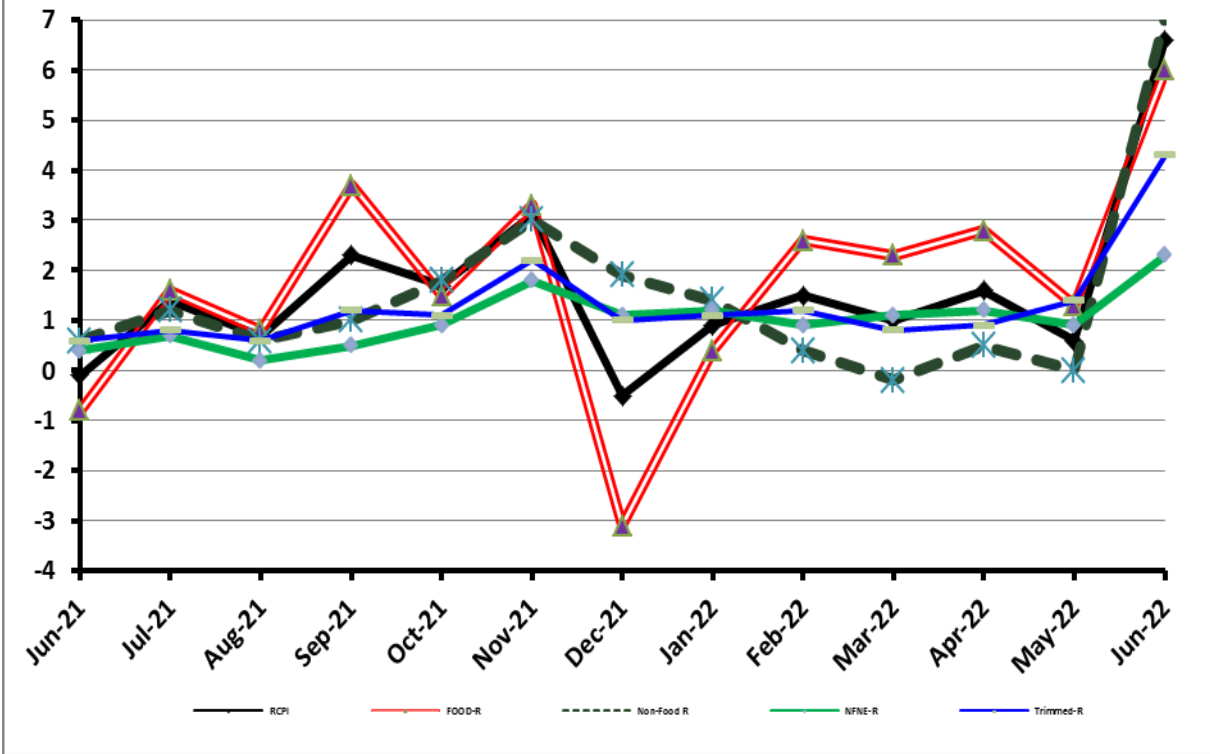


Figure 5: CPI Y.o.Y (National, Urban, Rural)

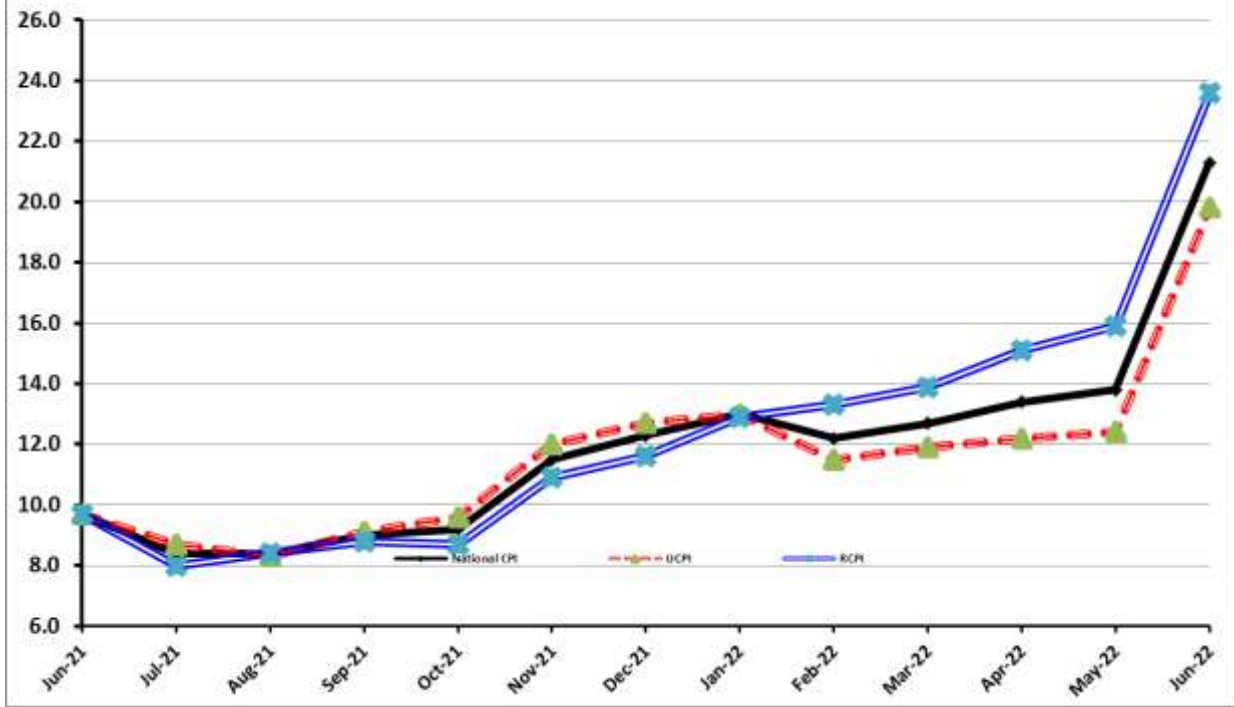
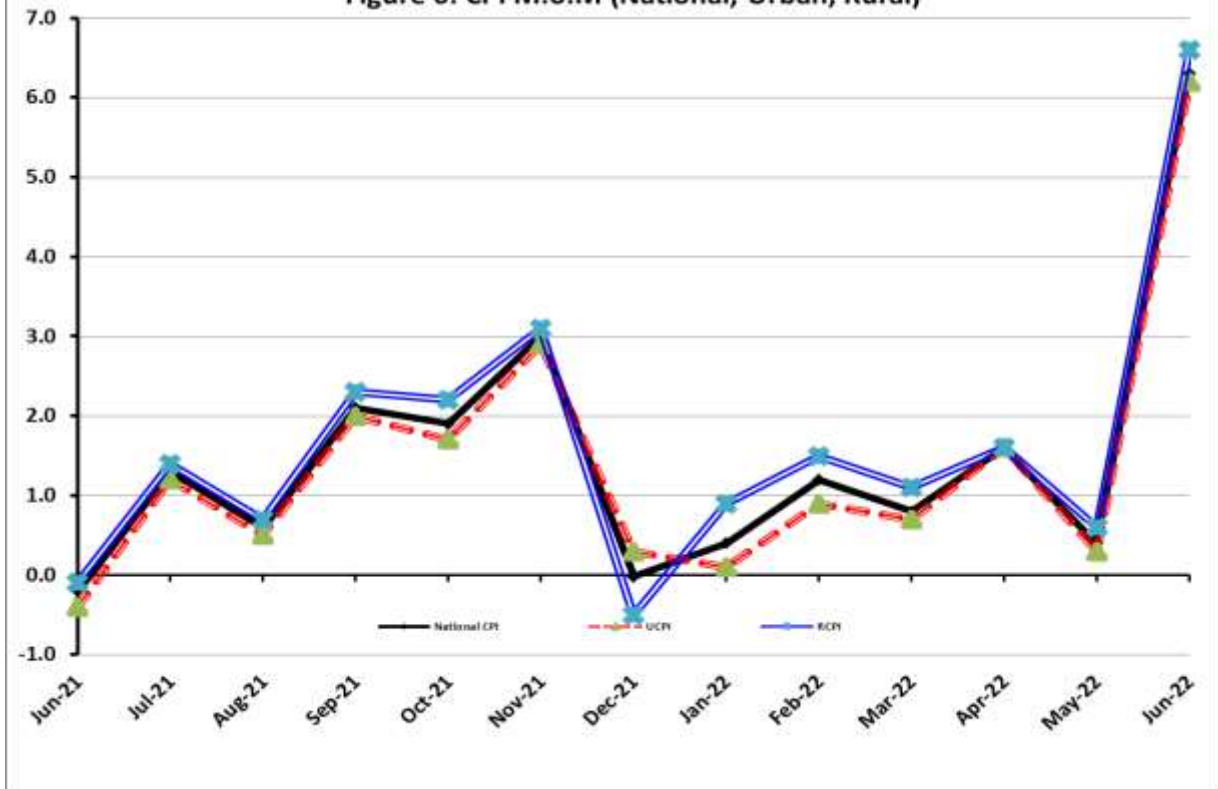


Figure 6: CPI M.o.M (National, Urban, Rural)



I. National Consumer Price Index (N-CPI)

The **National Consumer Price Index** for **June 2022** is **increased** by 6.34% over **May 2022** and increased by 21.32% over corresponding month of the last year i.e. **June 2021**.

Table 1: Consumer Price Index (National) by Group of Commodities and Services (Base 2015-16)									
No	Group	Group Weight (%)	Indices			% Change June 2022 Over		Impact (In % points) June 2022 Over	
			June 22	May 22	June 21	May 22	June 21	May 22	June 21
	General	100.00	175.71	165.23	144.82	6.34	21.32	6.34	21.32
1.	Food & Non-alcoholic Bev.	34.58	187.67	177.90	149.04	5.49	25.92	2.05	9.23
	<i>Non-perishable Food Items</i>	29.60	189.48	179.59	152.29	5.51	24.43	1.77	7.60
	<i>Perishable Food Items</i>	4.99	176.90	167.84	129.75	5.40	36.34	0.27	1.62
2.	Alcoholic Bev. & Tobacco	1.02	170.27	159.13	144.79	7.00	17.60	0.07	0.18
3.	Clothing & Footwear	8.60	169.61	165.72	149.14	2.34	13.72	0.20	1.21
4.	Housing, Water, Electricity, Gas & Fuels	23.63	159.01	147.64	140.11	7.70	13.48	1.63	3.08
5.	Furnishing & Household Equipment Maintenance	4.10	168.60	163.87	141.97	2.89	18.76	0.12	0.75
6.	Health	2.79	171.32	169.25	153.93	1.23	11.30	0.04	0.34
7.	Transport	5.91	232.12	186.61	143.13	24.39	62.17	1.63	3.63
8.	Communication	2.21	110.78	110.52	108.65	0.24	1.96	0.00	0.03
9.	Recreation & Culture	1.59	145.62	141.10	127.35	3.20	14.35	0.04	0.20
10.	Education	3.79	158.67	158.28	144.95	0.25	9.46	0.01	0.36
11.	Restaurants & Hotels	6.92	174.69	165.12	143.36	5.79	21.85	0.40	1.50
12.	Miscellaneous	4.87	177.79	172.08	153.50	3.32	15.83	0.17	0.82

II. Urban Consumer Price Index (UCPI)

The Urban Consumer Price Index for **June 2022** is increased by 6.19% over **May 2022** and increased by 19.84% over corresponding month of the last year i.e. **June 2021**.

Table 2: Consumer Price Index (Urban) by Group of Commodities and Services (Base 2015-16)

No	Group	Group Weight (%)	Indices			% Change June 2022 Over		Impact (In % points) June 2022 Over	
			June 22	May 22	June 21	May 22	June 21	May 22	June 21
	General	100.00	173.23	163.13	144.55	6.19	19.84	6.19	19.84
1.	Food & Non-alcoholic Bev.	30.42	185.86	177.05	149.13	4.98	24.63	1.64	7.73
	<i>Non-perishable Food Items</i>	25.97	187.42	178.69	151.82	4.89	23.45	1.39	6.40
	<i>Perishable Food Items</i>	4.46	176.76	167.49	133.48	5.53	32.42	0.25	1.33
2.	Alcoholic Bev.& Tobacco	0.85	182.04	168.24	153.94	8.20	18.25	0.07	0.17
3.	Clothing & Footwear	8.01	167.25	162.38	146.45	3.00	14.20	0.24	1.15
4.	Housing, Water, Electricity, Gas & Fuels	27.03	157.02	146.71	141.05	7.03	11.32	1.71	2.99
5.	Furnishing & Household Equip. & Maintenance	4.09	165.68	161.43	140.90	2.63	17.59	0.11	0.70
6.	Health	2.31	171.46	169.14	154.68	1.37	10.85	0.03	0.27
7.	Transport	6.14	233.01	188.65	144.31	23.51	61.46	1.67	3.77
8.	Communication	2.35	113.09	112.82	110.36	0.24	2.47	0.00	0.04
9.	Recreation & Culture	1.73	140.84	136.64	124.35	3.07	13.26	0.04	0.20
10.	Education	4.88	162.10	161.96	146.89	0.09	10.35	0.00	0.51
11.	Restaurants & Hotels	7.41	173.02	162.26	142.77	6.63	21.19	0.49	1.55
12.	Miscellaneous	4.77	176.62	170.38	153.41	3.66	15.13	0.18	0.77

Main contributors to month-on-month and year-on-year percentage changes are given below and detail is given in **Annexure-A**.

1. MONTH-ON-MONTH Top few commodities which varied from previous month are given below:

FOOD

Increased: Potatoes (34.64%), Eggs (19.98%), Pulse Masoor (17.42%), Mustard Oil (17.39%), Pulse Gram (14.03%), Gram whole (13.62%), Wheat (13.03%), Vegetable Ghee (12.86%), Rice (11.67%), Besan (9.36%), Tomatoes (9.03%), Milk (8.18%), Cooking Oil (7.91%) and Fruits (7.69%).

Decreased: Chicken (7.83%), Wheat Flour (3.76%) and Vegetables (3.54%).

NON-FOOD

Increased: Electricity Charges (51.80%), Motor Fuel (37.13%), Footwear (8.82%), Stationery (8.29%), Construction Input Items (5.26%), Motor Vehicle Accessories (4.40%), Plastic Products (3.87%), Washing Soap/Detergents/Match Box (3.80%) and Carpets (3.03%).

YEAR-ON-YEAR: Top few commodities which varied from corresponding month of previous year i.e. June, 2021 are given below:

FOOD

Increased: Onions (124.30%), Tomatoes (121.72%), Mustard Oil (81.82%), Vegetable Ghee (76.71%), Pulse Masoor (74.32%), Cooking Oil (70.8%), Gram whole (57.49%), Chicken (47.52%), Fruits (38.63%), Pulse Gram (31.95%), Wheat (31.86%), Meat (26.08%), Rice (25.9%), Besan (24.96%), Beans (21.74%) and Milk (21.29%).

Decreased: Condiments & Spices (20.11%), Pulse Moong (18.46%) and Sugar (11.28%)

NON-FOOD

Increased: Motor Fuel (95.74%), Liquefied Hydrocarbons (60.95%), Electricity Charges (34.65%), Stationery (30.75%), Cleaning and Laundering (30.25%), Washing Soap/Detergents/Match Box (22.63%), Motor Vehicle Accessories (21.9%), Plastic Products (20.68%), Footwear (19.33%), Household Equipments (18.92%), Construction Input Items (18.35%) and Cotton Cloth (15.71%).

III. Rural Consumer Price Index (RCPI)

The Rural Consumer Price Index for June 2022 is increased by 6.57% over May 2022 and increased by 23.55% over corresponding month of the last year i.e. June 2021.

Table 3: Consumer Price Index (Rural) by Group of Commodities and Services (Base 2015-16)

No	Group	Group Weight (%)	Indices			% Change June 2022 Over		Impact (In % points) June 2022 Over	
			June 22	May 22	June 21	May 22	June 21	May 22	June 21
	General	100.00	179.45	168.39	145.24	6.57	23.55	6.57	23.55
1.	Food & Non-alcoholic Bev.	40.87	189.71	178.85	148.93	6.07	27.38	2.64	11.47
	<i>Non-perishable Food Items</i>	35.08	191.79	180.60	152.81	6.20	25.51	2.33	9.41
	<i>Perishable Food Items</i>	5.79	177.07	168.25	125.41	5.24	41.19	0.30	2.06
2.	Alcoholic Bev. & Tobacco	1.28	158.40	149.95	135.56	5.64	16.85	0.06	0.20
3.	Clothing & Footwear	9.48	172.61	169.98	152.58	1.55	13.13	0.15	1.31
4.	Housing, Water, Electricity, Gas & Fuels	18.49	163.39	149.69	138.05	9.15	18.36	1.50	3.22
5.	Furnishing & Household Equip. & Maintenance	4.10	172.99	167.54	143.57	3.25	20.49	0.13	0.83
6.	Health	3.51	171.19	169.35	153.18	1.09	11.76	0.04	0.44
7.	Transport	5.56	230.64	183.22	141.17	25.88	63.38	1.57	3.42
8.	Communication	1.99	106.68	106.42	105.61	0.24	1.01	0.00	0.01
9.	Recreation & Culture	1.38	154.68	149.55	133.03	3.43	16.27	0.04	0.21
10.	Education	2.13	146.84	145.58	138.27	0.87	6.20	0.02	0.13
11.	Restaurants & Hotels	6.19	177.70	170.29	144.42	4.35	23.04	0.27	1.42
12.	Miscellaneous	5.02	179.48	174.53	153.63	2.84	16.83	0.15	0.89

Main contributors to Month-on-Month and Year-on-Year percentage changes are given below and detail is given in **Annexure-B**.

1. MONTH-ON-MONTH Top few commodities which varied from previous month are given below:

FOOD

Increased: Tomatoes (27.70%), Potatoes (25.85%), Eggs (19.96%), Cooking Oil (18.27%), Vegetable Ghee (17.16%), Pulse Masoor (14.47%), Mustard Oil (13.24%), Gram Whole (11.75%), Pulse Gram (11.14%), Wheat (9.83%), Rice (9.75%), Onions (8.75%), Besan (8.36%), Milk (7.19%), Pulse Mash (7.13%), Pulse Moong (5.14%) and Sugar (2.30%).

Decreased: Chicken (11.10%), Wheat Flour (4.01%), Fruits (3.54%) and Vegetables (0.33%)

NON-FOOD

Increased: Electricity Charges (51.80%), Motor Fuels (40.05%), Construction Input Items (8.97%), Stationery (6.14%), Motor Vehicles Accessories (6.13%), Cleaning & Laundering (5.14%), Liquefied Hydrocarbons (4.43%), Solid Fuel (3.71%), Furniture & Furnishing (3.62%), Tailoring (3.25%) and Woolen Cloth (3.11%).

2. YEAR-ON-YEAR: Top few commodities which varied from corresponding month of previous year i.e. June 2021 are given below:

FOOD

Increased: Onions (175.59%), Tomatoes (149.57%), Cooking Oil (88.28%), Vegetable Ghee (86.34%), Mustard Oil (78.06%), Pulse Masoor (73.93%), Gram Whole (65.36%), Fruits (40.93%), Chicken (33.62%), Wheat (30.22%), Vegetables (27.27%), Pulse Gram (27.10%), Besan (26.41%), Meat (26.38%), Beans (25.41%), Rice (24.83%), Milk (19.66%) and Pulse Mash (17.77%).

Decreased: Pulse Moong (14.64%), Condiments & Spices (11.58%), Sugar (10.3%) and Gur (0.98%)

NON-FOOD

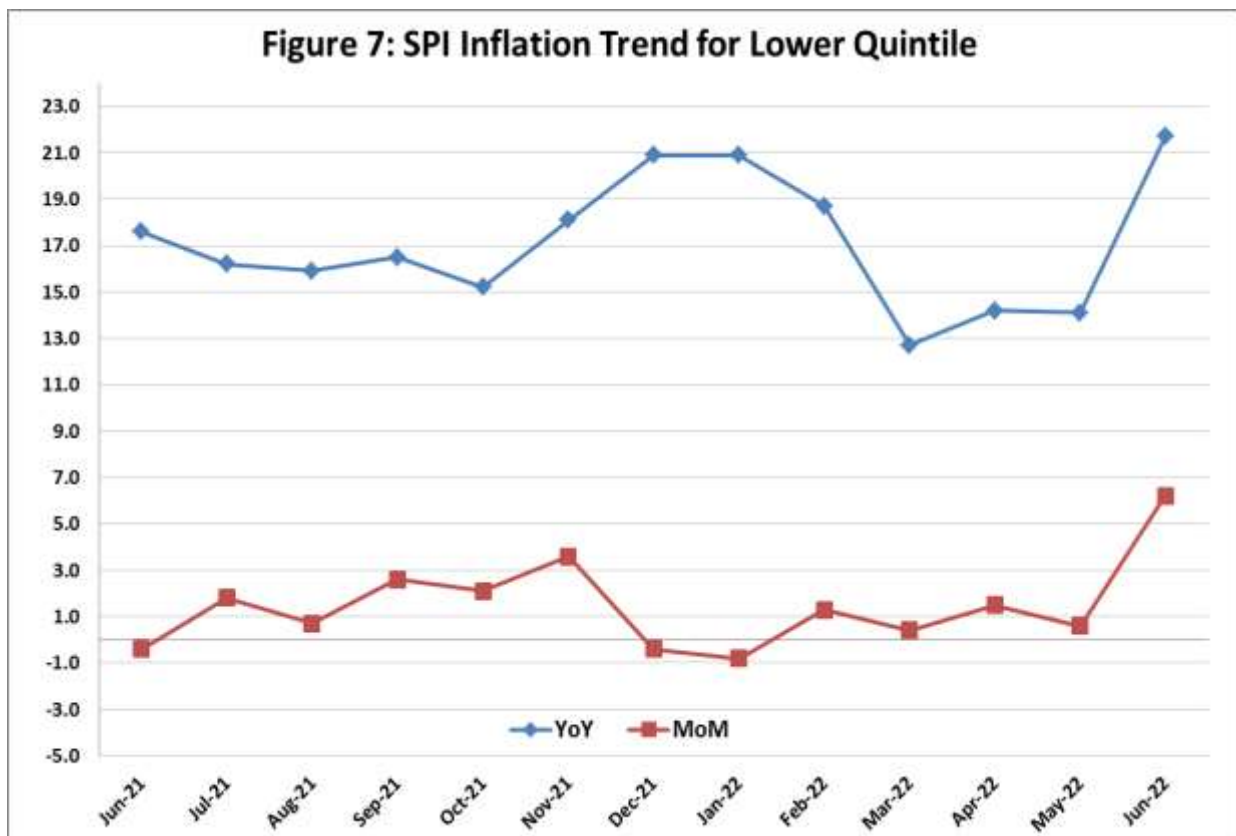
Increased: Motor Fuels (99.44%), Liquefied Hydrocarbons (63.49%), Electricity Charges (34.65%), Cleaning & Laundering (28.36%), Construction Input Items (28.34%), Motor Vehicles Accessories (26.48%), Stationery (21.56%), Solid Fuel (20.19%), Hosiery (19.16%), Furniture & Furnishing (18.94%), Household Equipments (17.62%), Plastic Products (17.37%) and Readymade Garments (15.02%).

IV. Sensitive Price Indicator

Quintile-wise percentage changes YoY and MoM are given below in Table 4. The series from June 2021 to June 2022 is also graphed below in Figure 7.

Table 4: Sensitive Price Indicator (Base 2015-16)					
Quintiles	Indices			% Change June 2022 Over	
	June 22	May 22	June 21	May 22	June 21
1	193.89	182.59	159.38	6.19	21.65
2	184.02	171.81	148.89	7.11	23.59
3	187.33	175.01	150.36	7.04	24.59
4	185.14	172.22	146.89	7.50	26.04
5	189.78	175.02	148.16	8.43	28.09
Combined	187.41	173.38	148.21	8.09	26.45

Table 4.1 : Weekly Percentage Change of SPI During June - 2022					
Quintiles	% Change with Previous week				
	02-06-2022	09-06-2022	16-06-2022	23-06-2022	30-06-2022
Quintile 1	1.02	1.72	2.85	1.35	3.79
Combined	2.00	2.67	3.38	1.01	3.63



V. Wholesale Price Index

The Wholesale Price Index for June, 2022 increased by 8.18% over May, 2022. It increased by 38.94% over the corresponding month of the last year i.e. June, 2021. YoY and MoM movements, from June, 2021 to June, 2022 are also graphed below in Figure 8.

Table 5: Wholesale Price Index by Group of Commodities (Base 2015-16)

No	Group	Group Weight (%)	Indices			% Change June 2022 Over		Impact (In % points) June 2022 Over	
			June 22	May 22	June 21	May 22	June 21	May 22	June 21
	General	100.00	228.03	210.79	164.12	8.18	38.94	8.18	38.94
1	Agriculture Forestry & Fishery	25.77	224.50	215.48	167.14	4.19	34.32	1.10	9.00
2	Ores/Minerals, Elec., Gas & Water	12.01	184.03	182.43	167.12	0.88	10.12	0.09	1.24
3	Food, Beverages, Tobacco, Textiles & Leather Products	31.11	196.39	186.11	160.39	5.52	22.45	1.52	6.82
	i. Food Products, Beverages & Tobacco	20.07	196.98	182.93	156.23	7.68	26.08	1.34	4.98
	ii. Textiles & Apparels	10.33	198.51	196.18	171.30	1.19	15.88	0.11	1.71
	iii. Leather Products	0.71	149.01	129.63	119.35	14.95	24.85	0.07	0.13
4	Other Transportable Goods	22.40	306.76	263.09	165.33	16.60	85.54	4.64	19.30
5	Metal Product, Machinery & Equipment	8.72	209.74	189.70	161.24	10.56	30.08	0.83	2.58

Main contributors to month-on-month and year-on-year percentage changes are given below and detail is given in **Annexure-C**.

1. MONTH-ON-MONTH: Top few commodities which varied from previous month are given below:

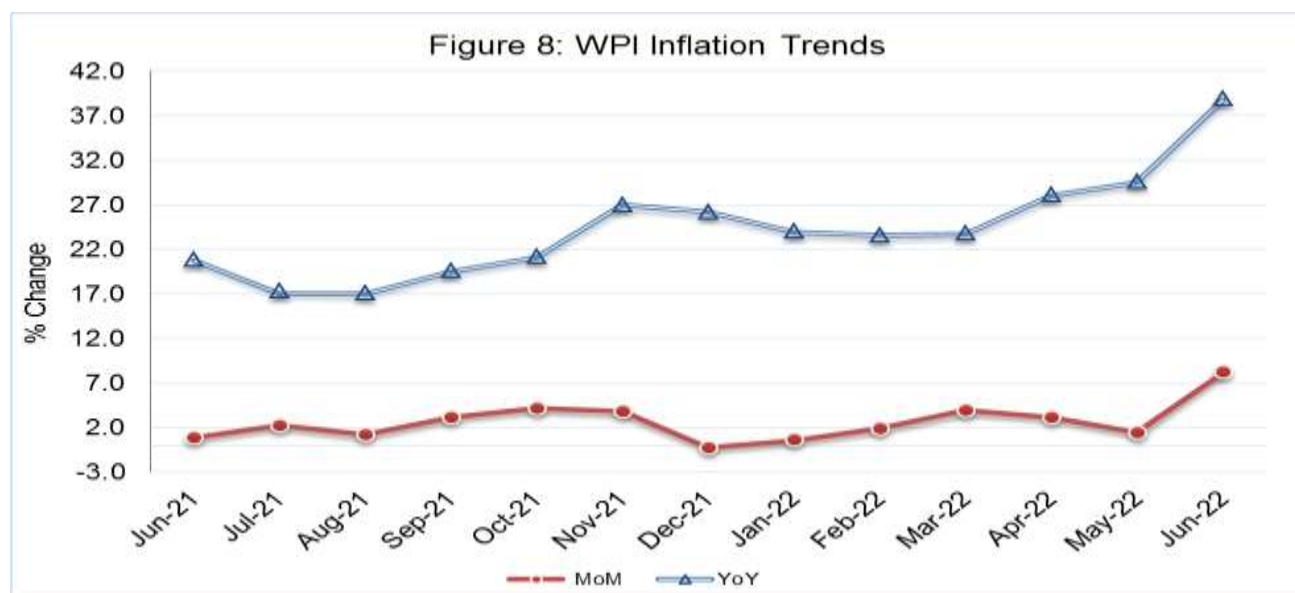
Increased: Diesel Oil (57.36%), Potatoes (56.51%), Kerosene Oil (50.83%), Motor Spirit (44.85%), Footwear's (41.34%), Lighting Equipments (31.88%), Glass sheets (25.73%), Eggs (24.49%), Vegetable Ghee (19.25%), Electric Wires (18.28%), Vegetable Oil (17.5%), Milk (17.09%), Maize (16.13%), Coal (13.97%), Wheat (13.17%), Steel Bar & Sheets (11.02%), Oil Seeds (10.85%), Pulses (10.75%) and Cement (10.17%).

Decreased: Poultry (8.73%), Spices (7.43%), Jowar (6.86%) and Stimulant & Spice Crops (5.42%).

2. YEAR-ON-YEAR: Top few commodities which varied from previous year are given below:

Increased: Kerosene Oil (142.97%), Diesel Oil (130.8%), Chuff Cutter (129.36%), Concrete Mixture (123.42%), Furnace Oil (118.13%), Motor Spirit (109.78%), Vegetable Ghee (93.36%), Oil Seeds (80.77%), Coal (79.42%), Chemicals (72.32%), Cultivators (68.18%), Fibre Crops (68.13%), Vegetable Oil (63.18%), Bed Foam (59.06%), Pulses (52.76%), Poultry (51.52%), Cement (48.85%), Steel Bar & Sheets (48.61%), Fertilizers (48.34%), Air Conditioners (46.09%) and Vegetables (41.60%).

Decreased: Stimulant & Spice Crops (44.39%), Spices (40.58%), Bajra (12.31%) and Sugar (9.28%).



Annexure A:CPI (Urban) Index Numbers by Commodity Groups & Commodities (2015-16=100)

Item and Specification	Weight	Index Numbers			% Change in Jun 2022 over	
		Jun 22	May 22	Jun 21	May 2022	Jun 2021
General	100.0000	173.23	163.13	144.55	+ 6.19	+ 19.84
Food and non-alcoholic Bevera	30.4215	185.86	177.05	149.13	+ 4.98	+ 24.63
01 Wheat	0.6120	203.44	179.98	154.29	+ 13.03	+ 31.86
02 Wheat flour	3.0075	171.61	178.31	147.79	- 3.76	+ 16.12
03 Wheat products	0.0936	192.14	185.02	159.52	+ 3.85	+ 20.45
04 Besan	0.0830	156.75	143.34	125.44	+ 9.36	+ 24.96
05 Rice	1.1804	183.06	163.93	145.40	+ 11.67	+ 25.90
06 Bakery and confectionary	0.4770	182.23	169.04	148.38	+ 7.80	+ 22.81
07 Nimco	0.1224	193.49	182.03	144.39	+ 6.30	+ 34.01
08 Meat	2.0411	217.33	209.16	172.38	+ 3.91	+ 26.08
09 Chicken	1.3631	201.90	219.04	136.86	- 7.83	+ 47.52
10 Fish	0.3855	124.55	123.28	113.13	+ 1.03	+ 10.09
11 Milk fresh	7.1070	171.31	158.36	141.24	+ 8.18	+ 21.29
12 Milk products	0.6407	172.73	161.39	145.49	+ 7.03	+ 18.72
13 Milk powder	0.3106	165.29	156.94	138.33	+ 5.32	+ 19.49
14 Eggs	0.5083	208.87	174.09	176.33	+ 19.98	+ 18.45
15 Butter	0.0932	233.91	226.27	193.95	+ 3.38	+ 20.60
16 Mustard oil	0.0120	302.41	257.61	166.32	+ 17.39	+ <u>81.82</u>
17 Cooking oil	1.1016	301.59	279.49	176.58	+ 7.91	+ <u>70.80</u>
18 Vegetable ghee	1.0324	326.94	289.68	185.02	+ 12.86	+ <u>76.71</u>
19 Dry fruits	0.3299	154.18	152.10	137.03	+ 1.37	+ 12.52
20 Fresh fruits	1.4363	195.46	181.50	140.99	+ 7.69	+ 38.63
21 Pulse masoor	0.1624	187.66	159.82	107.65	+ 17.42	+ <u>74.32</u>
22 Pulse moong	0.1697	111.79	110.93	137.10	+ 0.78	- 18.46
23 Pulse mash	0.1152	130.21	121.59	111.06	+ 7.09	+ 17.24
24 Pulse gram	0.1660	161.05	141.23	122.05	+ 14.03	+ 31.95
25 Gram whohe	0.0912	205.67	181.02	130.59	+ 13.62	+ <u>57.49</u>
26 Beans	0.0408	194.67	181.45	159.90	+ 7.29	+ 21.74
27 Potatoes	0.4496	201.63	149.75	192.90	+ 34.64	+ 4.53
28 Onions	0.5928	178.50	175.43	79.58	+ 1.75	+ <u>124.3</u>
29 Tomatoes	0.3459	188.17	172.59	84.87	+ 9.03	+ <u>121.7</u>
30 Fresh vegetables	1.5306	150.40	155.92	129.22	- 3.54	+ 16.39
31 Sugar	1.1130	140.58	137.49	158.45	+ 2.25	- 11.28
32 Gur	0.0379	155.81	154.87	150.08	+ 0.61	+ 3.82
33 Honey	0.1017	156.46	156.31	131.29	+ 0.10	+ 19.17
34 Sweetmeat	0.3535	197.31	190.83	153.10	+ 3.40	+ 28.88
35 Ice cream	0.1044	148.70	148.05	146.19	+ 0.44	+ 1.72
36 Condiments and Spices	1.3340	172.79	173.95	216.29	- 0.67	- 20.11
37 Dessert preparation	0.0419	151.88	145.38	133.10	+ 4.47	+ 14.11
38 Tea	0.8427	159.11	158.99	140.84	+ 0.08	+ 12.97
39 Beverages	0.8906	148.52	142.94	131.05	+ 3.90	+ 13.33
Alcoholic Beverages, Tobacco	0.8540	182.04	168.24	153.94	+ 8.20	+ 18.25
40 Cigarettes	0.7167	167.05	154.18	141.09	+ 8.35	+ 18.40
41 Pan prepared	0.1373	260.32	241.63	221.00	+ 7.73	+ 17.79
Clothing and footwear	8.0096	167.25	162.38	146.45	+ 3.00	+ 14.20
42 Cotton cloth	2.2227	173.84	169.04	150.24	+ 2.84	+ 15.71
43 Woolen cloth	0.8361	157.31	154.44	141.24	+ 1.86	+ 11.38
44 Readymade garments	1.3196	151.09	150.30	139.10	+ 0.53	+ 8.62
45 Woolen readymade garments	0.4307	159.54	159.54	142.21	+ 0.00	+ 12.19
46 Tailoring	1.0741	170.63	168.69	150.72	+ 1.15	+ 13.21
47 Hosiry	0.4070	163.86	161.93	144.29	+ 1.19	+ 13.56
48 Dopatta	0.1713	141.20	140.55	129.93	+ 0.46	+ 8.67
49 Cleaning and laundring	0.0665	193.44	188.90	148.51	+ 2.40	+ 30.25
50 Footware	1.4816	179.93	165.34	150.78	+ 8.82	+ 19.33
Housing, water, Elec., Gas an	27.0332	157.02	146.71	141.05	+ 7.03	+ 11.32
51 House rent	19.2558	145.80	145.80	138.09	+ 0.00	+ 5.58
52 Construcion input items	0.3765	182.61	173.48	154.30	+ 5.26	+ 18.35
53 Construction wage rates	0.2025	174.25	170.65	156.06	+ 2.11	+ 11.66
54 Water supply	0.5269	166.58	166.58	158.72	+ 0.00	+ 4.95
55 Garbage collection	0.1064	197.91	196.32	173.90	+ 0.81	+ 13.81
56 Electricity charges	4.5562	176.21	116.08	130.87	+ <u>51.80</u>	+ 34.65
57 Gas charges	1.0807	216.94	216.94	216.94	+ 0.00	+ 0.00
58 Liquified Hydrocarbons	0.5064	255.60	255.45	158.81	+ 0.06	+ <u>60.95</u>
59 Solid Fuel	0.4218	136.86	135.73	120.79	+ 0.83	+ 13.30

Annexure A:CPI (Urban) Index Numbers by Commodity Groups & Commodities (2015-16=100)

Item and Specification	Weight	Index Numbers			% Change in Jun 2022 over	
		Jun 22	May 22	Jun 21	May 2022	Jun 2021
<i>Furnishing and household equi</i>	4.0937	165.68	161.43	140.90	+ 2.63	+ 17.59
60 Furniture and furnishing	0.4750	162.78	159.48	141.76	+ 2.07	+ 14.83
61 Carpets	0.0308	125.72	122.02	113.24	+ 3.03	+ 11.02
62 Household textiles	0.3420	144.90	143.16	135.27	+ 1.22	+ 7.12
63 Household equipments	1.0032	169.74	165.49	142.73	+ 2.57	+ 18.92
64 Plastic products	0.0536	148.09	142.57	122.71	+ 3.87	+ 20.68
65 Major tools & equipments	0.0084	167.93	162.15	138.62	+ 3.56	+ 21.14
66 Washing soap/detergents/match	1.4112	177.65	171.15	144.87	+ 3.80	+ 22.63
67 Household servant	0.7695	152.26	150.52	135.61	+ 1.16	+ 12.28
<i>Health</i>	2.3098	171.46	169.14	154.68	+ 1.37	+ 10.85
68 Drugs and medicines	1.0735	173.82	171.90	154.58	+ 1.12	+ 12.45
69 Therapeutic Appliances and Eq	0.0054	123.13	122.89	116.64	+ 0.20	+ 5.56
70 Doctor (MBBS) clinic fee	0.4044	213.15	210.21	192.11	+ 1.40	+ 10.95
71 Dental services	0.0156	138.06	136.79	128.98	+ 0.93	+ 7.04
72 Medical tests	0.2367	149.22	146.03	134.39	+ 2.18	+ 11.04
73 Hospitals services	0.5742	148.22	145.92	137.93	+ 1.58	+ 7.46
<i>Transport</i>	6.1368	233.01	188.65	144.31	+ 23.51	+ 61.46
74 Motor vehicles	0.8097	186.84	184.89	154.49	+ 1.05	+ 20.94
75 Motor vehicle accessories	0.1941	173.04	165.75	141.95	+ 4.40	+ 21.90
76 Motor fuel	2.9088	297.76	217.13	152.12	+ 37.13	+ 95.74
77 Mechanical services	0.4290	160.00	158.26	137.66	+ 1.10	+ 16.23
78 Motor vehicle tax	0.0482	136.37	136.37	126.72	+ 0.00	+ 7.62
79 Transport services	1.7470	173.86	154.43	128.98	+ 12.58	+ 34.80
<i>Communication</i>	2.3536	113.09	112.82	110.36	+ 0.24	+ 2.47
80 Postal services	0.0190	184.35	164.62	162.27	+ 11.99	+ 13.61
81 Communication apparatus	0.4524	131.43	130.82	119.65	+ 0.47	+ 9.85
82 Communication Services	1.8822	107.97	107.97	107.61	+ 0.00	+ 0.33
<i>Recreation and culture</i>	1.7301	140.84	136.64	124.35	+ 3.07	+ 13.26
83 Recreation and culture	0.6478	123.40	119.49	113.96	+ 3.27	+ 8.28
84 Text books	0.6655	137.89	137.89	126.34	+ 0.00	+ 9.14
85 Newspapers	0.0716	157.93	156.62	151.55	+ 0.84	+ 4.21
86 stationery	0.3452	175.73	162.27	134.40	+ 8.29	+ 30.75
<i>Education</i>	4.8807	162.10	161.96	146.89	+ 0.09	+ 10.35
87 Education	4.8807	162.10	161.96	146.89	+ 0.09	+ 10.35
<i>Restaurants and hotels</i>	7.4050	173.02	162.26	142.77	+ 6.63	+ 21.19
88 Readymade food	5.5235	175.90	165.10	144.99	+ 6.54	+ 21.32
89 Marriage Hall Charges	1.7514	167.64	156.23	137.97	+ 7.30	+ 21.50
90 Accommodation Services	0.1301	122.86	122.77	113.30	+ 0.07	+ 8.44
<i>Misc. goods and services</i>	4.7720	176.62	170.38	153.41	+ 3.66	+ 15.13
91 Personal Grooming Services	0.8001	158.05	153.18	138.39	+ 3.18	+ 14.21
92 Electrical Appliances for Per	0.0465	135.58	134.54	118.50	+ 0.77	+ 14.41
93 Appliances/Articles/Products	2.9807	164.14	157.63	143.49	+ 4.13	+ 14.39
94 Personal Effects n.e.c.	0.9447	233.75	226.92	199.16	+ 3.01	+ 17.37

Annexure B:CPI (Rural) Index Numbers by Commodity Groups & Commodities (2015-16=100)

Item and Specification	Weight	Index Numbers			% Change in Jun 2022 over			
		Jun 22	May 22	Jun 21	May 2022	Jun 2021		
General	100.0000	179.45	168.39	145.24	+	6.57	+	23.55
Food and non-alcoholic Bevera	40.8668	189.71	178.85	148.93	+	6.07	+	27.38
01 Wheat	3.4736	198.38	180.62	152.34	+	9.83	+	30.22
02 Wheat Flour	3.4297	171.61	178.77	149.22	-	4.01	+	15.00
03 Wheat Products	0.1068	179.03	169.40	149.27	+	5.68	+	19.94
04 Besan	0.0728	161.68	149.21	127.90	+	8.36	+	26.41
05 Rice	1.5501	231.98	211.37	185.83	+	9.75	+	24.83
06 Bakery and Confectionary	0.3702	187.16	174.36	146.42	+	7.34	+	27.82
07 Nimco	0.0774	180.31	168.92	131.46	+	6.74	+	37.16
08 Meat	1.7146	216.72	208.95	171.48	+	3.72	+	26.38
09 Chicken	1.4641	202.62	227.91	151.64	-	11.10	+	33.62
10 Fish	0.2640	138.34	138.34	125.95	+	0.00	+	9.84
11 Milk fresh	10.3803	163.14	152.19	136.34	+	7.19	+	19.66
12 Milk products	0.9624	156.91	150.15	134.27	+	4.50	+	16.86
13 Milk powder	0.1062	138.45	135.81	128.91	+	1.94	+	7.40
14 Eggs	0.5665	198.79	165.72	171.54	+	19.96	+	15.89
15 Butter	0.3333	177.79	175.10	146.71	+	1.54	+	21.18
16 Mustard oil	0.0136	303.63	268.13	170.52	+	13.24	+	<u>78.06</u>
17 Cooking oil	0.6011	371.16	313.83	197.13	+	18.27	+	<u>88.28</u>
18 Vegetable ghee	2.3764	374.21	319.39	200.82	+	17.16	+	<u>86.34</u>
19 Dry fruits	0.2496	175.65	174.33	155.38	+	0.76	+	13.05
20 Fresh fruits	1.4505	207.02	214.61	146.90	-	3.54	+	40.93
21 Pulse Masoor	0.2076	196.18	171.38	112.79	+	14.47	+	<u>73.93</u>
22 Pulse Moong	0.2510	121.61	115.67	142.47	+	5.14	-	14.64
23 Pulse Mash	0.1465	128.64	120.08	109.23	+	7.13	+	17.77
24 Pulse Gram	0.2751	159.38	143.41	125.40	+	11.14	+	27.10
25 Gram Whole	0.1116	210.34	188.22	127.20	+	11.75	+	<u>65.36</u>
26 Beans	0.0896	212.70	204.13	169.60	+	4.20	+	25.41
27 Potatoes	0.7437	205.17	163.03	204.78	+	25.85	+	0.19
28 Onions	0.8965	176.05	161.88	63.88	+	8.75	+	<u>175.5</u>
29 Tomatoes	0.5069	182.41	142.84	73.09	+	27.70	+	<u>149.5</u>
30 Fresh Vegetables	2.0947	146.37	146.85	115.01	-	0.33	+	27.27
31 Sugar	2.0296	141.92	138.73	158.21	+	2.30	-	10.30
32 Gur	0.1522	148.99	148.18	150.47	+	0.55	-	0.98
33 Honey	0.0296	160.95	160.95	135.70	+	0.00	+	18.61
34 Sweetmeat	0.3967	178.91	171.93	139.43	+	4.06	+	28.32
35 Ice Cream	0.0568	148.26	147.61	141.98	+	0.44	+	4.42
36 Condiments and Spices	1.4919	164.38	159.78	185.91	+	2.88	-	11.58
37 Dessert Preparation	0.0133	146.34	141.40	132.10	+	3.49	+	10.78
38 Tea	1.2566	156.32	156.32	138.10	+	0.00	+	13.19
39 Beverages	0.5537	145.17	142.83	133.03	+	1.64	+	9.13
Alcoholic Beverages, Tobacco	1.2786	158.40	149.95	135.56	+	5.64	+	16.85
40 Cigarettes	1.2364	156.34	148.17	134.17	+	5.51	+	16.52
41 Pan Prepared	0.0422	218.86	202.12	176.12	+	8.28	+	24.27
Clothing and footwear	9.4826	172.61	169.98	152.58	+	1.55	+	13.13
42 Cotton Cloth	2.8381	190.35	187.68	168.50	+	1.42	+	12.97
43 Woolen Cloth	1.0959	164.60	159.63	144.06	+	3.11	+	14.26
44 Readymade Garments	1.1345	164.68	163.66	143.17	+	0.62	+	15.02
45 Woolen Readymade Garments	0.5401	164.85	164.85	143.31	+	0.00	+	15.03
46 Tailoring	1.2999	172.20	166.78	150.81	+	3.25	+	14.18
47 Hosiry	0.4322	219.86	214.59	184.51	+	2.46	+	19.16
48 Dopatta	0.2078	161.54	158.40	141.73	+	1.98	+	13.98
49 Cleaning and Laundering	0.0176	181.91	173.01	141.72	+	5.14	+	28.36
50 Footware	1.9165	148.54	148.22	137.31	+	0.22	+	8.18
Housing, water, Elec., Gas an	18.4853	163.39	149.69	138.05	+	9.15	+	18.36
51 House Rent	8.6110	146.50	146.50	138.56	+	0.00	+	5.73
52 Construction Input Items	0.6306	167.89	154.07	130.82	+	8.97	+	28.34
53 Construction Wage Rates	0.2526	177.29	174.50	158.49	+	1.60	+	11.86
54 Water Supply	0.0645	220.09	220.09	216.56	+	0.00	+	1.63
55 Garbage Collection	0.0080	165.51	163.74	150.24	+	1.08	+	10.16
56 Electricity Charges	3.4431	176.21	116.08	130.87	+	<u>51.80</u>	+	34.65
57 Liquified Hydrocarbons	0.9994	225.77	216.19	138.09	+	4.43	+	<u>63.49</u>
58 Solid Fuel	4.4761	169.85	163.77	141.32	+	3.71	+	20.19

Annexure B:CPI (Rural) Index Numbers by Commodity Groups & Commodities (2015-16=100)

Item and Specification	Weight	Index Numbers			% Change in Jun 2022 over			
		Jun 22	May 22	Jun 21	May 2022	Jun 2021		
<i>Furnishing and household equi</i>	4.1031	172.99	167.54	143.57	+	3.25	+	20.49
59 Furniture and Furnishing	0.5786	172.98	166.94	145.44	+	3.62	+	18.94
60 Household Textiles	0.4382	155.67	152.25	133.69	+	2.25	+	16.44
61 Household Equipments	1.2774	178.19	173.43	151.50	+	2.74	+	17.62
62 Plastic Products	0.0776	184.64	179.85	157.32	+	2.66	+	17.37
63 Major Tools and Equipments	0.0324	153.78	150.19	129.61	+	2.39	+	18.65
64 Washing Soaps, Detergents and	1.6989	173.38	167.04	139.15	+	3.80	+	24.60
<i>Health</i>	3.5141	171.19	169.35	153.18	+	1.09	+	11.76
65 Drugs and Medicines	1.5792	178.36	177.03	154.69	+	0.75	+	15.30
66 Doctor Clinic Fee	0.5128	211.30	207.11	187.58	+	2.02	+	12.65
67 Dental Services	0.0181	144.13	143.76	132.61	+	0.26	+	8.69
68 Medical Tests	0.3967	163.45	161.85	154.62	+	0.99	+	5.71
69 Hospitals Services	1.0073	143.04	141.50	133.08	+	1.09	+	7.48
<i>Transport</i>	5.5580	230.64	183.22	141.17	+	25.88	+	63.38
70 Motor Vehicles	0.7305	151.65	148.88	134.34	+	1.86	+	12.89
71 Motor Vehicles Accessories	0.1572	180.19	169.78	142.46	+	6.13	+	26.48
72 Motor Fuels	2.4932	298.70	213.28	149.77	+	40.05	+	99.44
73 Mechanical Services	0.3645	169.94	166.11	156.82	+	2.31	+	8.37
74 Motor Vehicle Tax	0.0174	120.86	120.86	127.98	+	0.00	-	5.56
75 Transport Services	1.7952	186.07	160.72	128.84	+	15.77	+	44.42
<i>Communication</i>	1.9940	106.68	106.42	105.61	+	0.24	+	1.01
76 Postal Services	0.0070	149.43	149.43	149.43	+	0.00	+	0.00
77 Communication Apparatus	0.3362	126.69	125.12	120.85	+	1.25	+	4.83
78 Communication Services	1.6508	102.42	102.42	102.33	+	0.00	+	0.09
<i>Recreation and culture</i>	1.3764	154.68	149.55	133.03	+	3.43	+	16.27
79 Recreation and Culture	0.4763	156.27	149.48	136.03	+	4.54	+	14.88
80 Text Books	0.5047	135.85	135.85	119.13	+	0.00	+	14.04
81 Newspapers	0.0230	165.72	165.56	165.56	+	0.10	+	0.10
82 Stationery	0.3724	177.50	167.23	146.02	+	6.14	+	21.56
<i>Education</i>	2.1342	146.84	145.58	138.27	+	0.87	+	6.20
83 Education	2.1342	146.84	145.58	138.27	+	0.87	+	6.20
<i>Restaurants and hotels</i>	6.1895	177.70	170.29	144.42	+	4.35	+	23.04
84 Readymade Food	3.8001	197.20	187.38	155.84	+	5.24	+	26.54
85 Marriage Hall Charges	2.2525	149.20	145.61	127.75	+	2.47	+	16.79
86 Accommodation Services	0.1369	105.32	101.62	101.62	+	3.64	+	3.64
<i>Misc. goods and services</i>	5.0174	179.48	174.53	153.63	+	2.84	+	16.83
87 Personal Grooming Services	1.5363	186.66	180.00	157.76	+	3.70	+	18.32
88 Appliances/Articles/Products	2.2746	148.63	146.62	133.18	+	1.37	+	11.60
89 Personal Effects n.e.c.	1.2065	228.48	220.19	186.94	+	3.76	+	22.22

Annexure C: Wholesale Price Indices by Major Groups & Commodities

(2015-16=100)

Item and Specification	Weight	Index Numbers			% Change in Jun 2022 over	
		Jun 22	May 22	Jun 21	May 2022	Jun 2021
General	100.0000	228.03	210.79	164.12	+ 8.18	+ 38.94
Agriculture Forestry & Fisher	25.7674	224.50	215.48	167.14	+ 4.19	+ 34.32
001 Wheat	0.6297	205.24	181.36	152.99	+ 13.17	+ 34.15
002 Maize	0.6764	214.92	185.07	156.43	+ 16.13	+ 37.39
003 Rice	2.4413	209.98	193.60	176.20	+ 8.46	+ 19.17
004 Sorghum / Jowar	0.0214	222.88	239.30	206.04	- 6.86	+ 8.17
005 Millet / Bajra	0.0374	211.77	213.37	241.50	- 0.75	- 12.31
006 Vegetables	1.2441	194.42	191.07	137.30	+ 1.75	+ 41.60
007 Fresh Fruits	1.5144	198.40	190.49	166.00	+ 4.15	+ 19.52
008 Dry Fruits	0.2478	146.28	144.28	138.67	+ 1.39	+ 5.49
009 Cotton Seeds	1.1511	161.47	154.33	141.53	+ 4.63	+ 14.09
010 Other Oil Seeds	0.0722	292.71	264.07	161.92	+ 10.85	+ <u>80.77</u>
011 Edible Roots / Potatoes	0.2540	241.69	154.42	221.47	+ <u>56.51</u>	+ 9.13
012 Stimulant & Spice Crops	0.1634	186.54	197.23	335.44	- 5.42	- 44.39
013 Pulses	0.4901	197.11	177.98	129.03	+ 10.75	+ <u>52.76</u>
014 Sugar Crops	1.0725	157.93	157.93	139.03	+ 0.00	+ 13.59
015 Fibre Crops	5.3169	395.77	399.52	235.39	- 0.94	+ <u>68.13</u>
016 Unmanufactured Tobacco	0.0742	270.28	261.60	237.60	+ 3.32	+ 13.75
017 Poultry	0.5633	199.90	219.01	131.93	- 8.73	+ <u>51.52</u>
018 Raw Milk from Bovine Animals	7.0279	170.45	154.85	139.47	+ 10.07	+ 22.21
019 Eggs	0.5034	207.76	166.89	172.90	+ 24.49	+ 20.16
020 Raw Animal Materials / Wool	0.0351	109.44	109.25	107.08	+ 0.17	+ 2.20
021 Hides, Skins & Fur Skins, Raw	0.4834	37.67	37.43	34.04	+ 0.64	+ 10.66
022 Fuel Wood in Logs	0.0179	131.78	131.78	127.94	+ 0.00	+ 3.00
023 Fish Live Fresh or Chilled	1.7295	160.45	160.22	158.03	+ 0.14	+ 1.53
Ores/Minerals, Elec., Gas & W	12.0069	184.03	182.43	167.12	+ 0.88	+ 10.12
024 Coal not Agglomerated	0.7508	135.98	119.31	75.79	+ 13.97	+ <u>79.42</u>
025 Natural Gas Liquified	5.7065	209.70	210.20	203.39	- 0.24	+ 3.10
026 Salt & Pure Sodium Chloride	0.0584	205.81	196.81	169.23	+ 4.57	+ 21.62
027 Electrical Energy	5.4912	163.70	162.05	141.90	+ 1.02	+ 15.36
Food, Beverages, Tobacco, Textil	31.1122	196.39	186.11	160.39	+ 5.52	+ 22.45
Food Products, Beverages &	20.0718	196.98	182.93	156.23	+ 7.68	+ 26.08
028 Meat of Animals	3.4559	211.73	202.59	178.38	+ 4.51	+ 18.70
029 Vegetables & Fruit Juice	0.0058	142.96	142.97	122.54	- 0.01	+ 16.66
030 Dried Fruits & Nuts	0.1733	194.21	186.21	177.62	+ 4.30	+ 9.34
031 Fruit Juices	0.3880	145.71	137.79	131.77	+ 5.75	+ 10.58
032 Vegetable Oils Refined	1.9242	263.13	223.94	161.25	+ 17.50	+ <u>63.18</u>
033 Vegetable Ghee	1.5632	371.71	311.70	192.24	+ 19.25	+ <u>93.36</u>
034 Oil Cakes	0.9611	211.42	194.85	160.73	+ 8.50	+ 31.54
035 Processed Liquid Milk	4.4437	163.14	154.92	143.51	+ 5.31	+ 13.68
036 Milk & Cream in Solid Form	0.0316	169.79	145.01	135.48	+ 17.09	+ 25.32
037 Ice Cream	0.0047	148.21	148.21	144.03	+ 0.00	+ 2.90
038 Dairy Products N.E.C	0.0117	160.19	152.72	138.30	+ 4.89	+ 15.83
039 Wheat Flour	2.3034	181.58	179.86	152.12	+ 0.96	+ 19.37
040 Other Cereal Flour	0.0604	159.74	148.84	126.48	+ 7.32	+ 26.30
041 Sugar Refined	1.7975	144.23	139.24	158.98	+ 3.58	- 9.28
042 Chocolate	0.0139	90.05	90.05	89.03	+ 0.00	+ 1.15
043 Sugar Confectionary	0.0738	189.30	189.30	187.48	+ 0.00	+ 0.97
044 Coffee & Tea	0.7303	151.93	151.26	129.90	+ 0.44	+ 16.96
045 Spices	0.1449	203.23	219.54	342.00	- 7.43	- 40.58
046 Other Food Products	0.0336	121.02	119.30	119.30	+ 1.44	+ 1.44
047 Mineral Water	0.0207	140.52	140.03	125.24	+ 0.35	+ 12.20
048 Beverages	0.6303	141.61	140.75	129.94	+ 0.61	+ 8.98
049 Tobacco Products	1.2998	129.61	121.15	104.23	+ 6.98	+ 24.35
Textiles & Apparels	10.3289	198.51	196.18	171.30	+ 1.19	+ 15.88
050 Cotton Yarn	5.2491	239.61	239.61	203.51	+ 0.00	+ 17.74
051 Nylon Yarn	0.1719	95.24	95.24	95.24	+ 0.00	+ 0.00
052 Blended Yarn	0.1689	148.12	148.12	129.30	+ 0.00	+ 14.56
053 Woven Fabrics	0.0128	174.73	170.33	152.49	+ 2.58	+ 14.58
054 Cotton Fabrics	0.6343	184.10	176.78	162.88	+ 4.14	+ 13.03
055 Other Fabrics	1.1016	147.18	138.13	120.49	+ 6.55	+ 22.15
056 Silk & Reyon Fabrics	0.7350	193.09	181.84	156.63	+ 6.19	+ 23.28
057 Towels	0.1235	158.38	153.39	141.44	+ 3.25	+ 11.98
058 Blankets	0.0029	105.56	105.56	104.95	+ 0.00	+ 0.58
059 Bed Sheets	0.0913	133.90	132.62	123.12	+ 0.97	+ 8.76

Annexure C: Wholesale Price Indices by Major Groups & Commodities

(2015-16=100)

Item and Specification	Weight	Index Numbers			% Change in Jun 2022 over	
		Jun 22	May 22	Jun 21	May 2022	Jun 2021
060 Quilts	0.0019	131.51	131.51	117.24	+ 0.00	+ 12.17
061 Woolen Carpets	0.0383	146.63	146.63	137.01	+ 0.00	+ 7.02
062 Synthetic Carpets	0.0566	131.66	125.27	116.51	+ 5.10	+ 13.00
063 Hosiery Products	0.8832	149.40	149.38	137.20	+ 0.01	+ 8.89
064 Readymade Garments	1.0576	142.64	142.64	139.51	+ 0.00	+ 2.24
Leather Products	0.7115	149.01	129.63	119.35	+ 14.95	+ 24.85
065 Leather Without Hair	0.2973	133.00	126.46	108.77	+ 5.17	+ 22.28
066 Other Leather N.E.C	0.2567	127.45	119.76	111.77	+ 6.42	+ 14.03
067 Footwears	0.1575	214.40	151.69	151.69	+ 41.34	+ 41.34
Other Transportable Goods	22.3979	306.76	263.09	165.33	+ 16.60	+ 85.54
068 Timber	0.0165	168.65	165.44	155.92	+ 1.94	+ 8.16
069 Printing Paper	0.4279	130.70	130.70	130.70	+ 0.00	+ 0.00
070 Hard Board	0.1579	146.50	146.50	146.50	+ 0.00	+ 0.00
071 Motor Spirit	1.6268	316.62	218.59	150.93	+ 44.85	+ 109.7
072 Diesel Oil	5.4849	358.08	227.56	155.15	+ 57.36	+ 130.8
073 Kerosine Oil	0.2151	385.74	255.74	158.76	+ 50.83	+ 142.9
074 Furnace Oil	3.2664	656.58	656.58	301.00	+ 0.00	+ 118.1
075 Mobil Oil	0.7114	157.47	152.10	129.75	+ 3.53	+ 21.36
076 Chemicals	1.7720	255.67	246.42	148.37	+ 3.75	+ 72.32
077 Dyeing Material	0.1539	146.16	146.16	146.16	+ 0.00	+ 0.00
078 Fertilizers	2.8657	167.03	166.53	112.60	+ 0.30	+ 48.34
079 Pesticides	0.2763	153.09	146.51	142.51	+ 4.49	+ 7.42
080 Insecticides	0.1276	111.49	111.49	111.49	+ 0.00	+ 0.00
081 Paints & Varnishes	0.1916	168.25	154.44	137.36	+ 8.94	+ 22.49
082 Medicines	1.1428	172.07	171.27	150.06	+ 0.47	+ 14.67
083 Soaps & Detergents	0.8168	144.54	139.57	116.71	+ 3.56	+ 23.85
084 Auto Tyres	0.2703	169.13	160.48	126.22	+ 5.39	+ 34.00
085 Plastic Products	0.4550	127.11	126.78	119.12	+ 0.26	+ 6.71
086 Glass sheets	0.2089	190.90	151.83	147.64	+ 25.73	+ 29.30
087 Other Glass Articles	0.1635	158.06	158.06	150.08	+ 0.00	+ 5.32
088 Ceramics & Sanitary Fixture	0.0244	140.49	140.49	126.79	+ 0.00	+ 10.81
089 Bricks, Blocks & Tiles	0.1566	151.62	146.02	134.65	+ 3.84	+ 12.60
090 Cement	1.8145	191.26	173.60	128.49	+ 10.17	+ 48.85
091 Bed Foam	0.0006	250.09	232.26	157.23	+ 7.68	+ 59.06
092 Matches	0.0505	1363.6	1363.6	1173.3	+ 0.00	+ 16.22
Metal Product, Machinery & Eq	8.7156	209.74	189.70	161.24	+ 10.56	+ 30.08
093 Steel Bar & Sheets	1.4615	288.92	260.25	194.42	+ 11.02	+ 48.61
094 Pipe Fittings	0.0780	231.07	230.64	169.43	+ 0.19	+ 36.38
095 Steel Products	0.3879	141.22	141.22	134.30	+ 0.00	+ 5.15
096 Engines & Motors	0.0046	117.67	117.67	107.29	+ 0.00	+ 9.67
097 Vacuum Pumps	0.0155	107.56	107.56	107.56	+ 0.00	+ 0.00
098 Air Conditioners	0.0049	185.90	180.30	127.25	+ 3.11	+ 46.09
099 Cultivators	0.0551	174.49	174.49	103.75	+ 0.00	+ 68.18
100 Chuff Cutter	0.1293	278.51	261.82	121.43	+ 6.37	+ 129.3
101 Tractors	0.0028	169.16	169.16	129.36	+ 0.00	+ 30.77
102 Lathe Machines	0.0525	334.37	290.58	217.68	+ 15.07	+ 53.61
103 Concrete Mixture	0.0107	223.42	195.88	100.00	+ 14.06	+ 123.4
104 Fridge, WashM, SewM, Fans, Iron	1.1645	180.36	179.07	161.48	+ 0.72	+ 11.69
105 Electric Wires	0.0912	175.32	148.23	144.65	+ 18.28	+ 21.20
106 Lighting Equipments	1.4431	178.30	135.20	126.37	+ 31.88	+ 41.09
107 Radio & Television	0.1843	121.60	118.05	106.58	+ 3.01	+ 14.09
108 Motor Vehicles	0.0244	190.09	187.29	158.44	+ 1.50	+ 19.98
109 Motorcycles	0.2570	176.41	166.21	132.17	+ 6.14	+ 33.47
110 Bicycles	3.3483	211.48	194.03	172.55	+ 8.99	+ 22.56