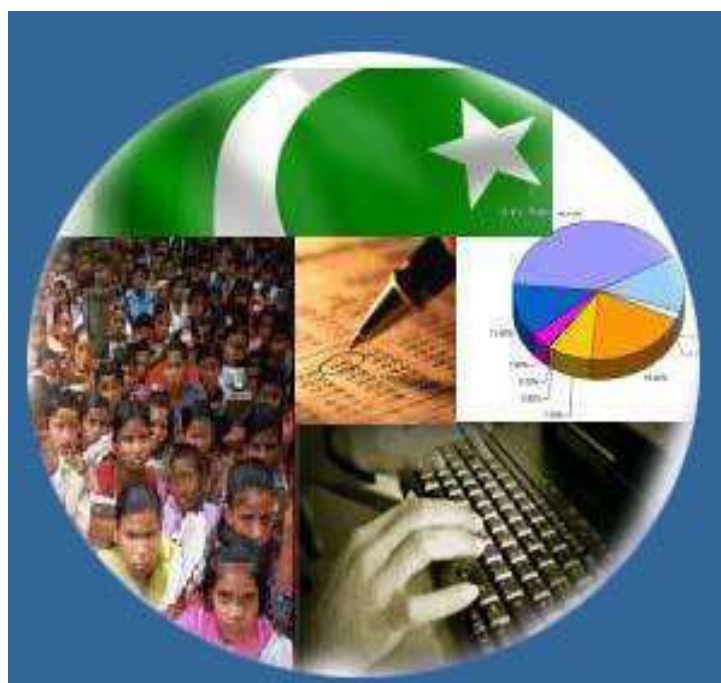




# Monthly Review on Price Indices



**July, 2022**  
**(Base Year 2015-16)**

**Government of Pakistan**  
**Ministry of Planning, Development & Special Initiatives**  
**Pakistan Bureau of Statistics**  
**Islamabad**

## **PRICE STATISTICS TEAM**

<b>S#</b>	<b>Name</b>	<b>Designation</b>
1.	Dr. Naeem Uz Zafar	Chief Statistician
2.	Syed Ejaz Wasti	Member (National Accounts/Prices)
3.	Dr. Bahrawar Jan	Deputy Director General
4.	Mr. Naseer Ahmad	Director
5.	Dr. Ahtasham Gul	Chief Statistical Officer
6.	Mr. Tauseef ul Hai Khan	Assistant Census Commissioner
7.	Mr. Adnan Shams	Statistical Officer
8.	Mr. Muhammad Mazhar	Statistical Officer
7.	Mr. Umar Farooq	Statistical Assistant
8.	Mrs. Madiha Gulfraz	Statistical Assistant
9.	Mrs. Humail Fatima	Statistical Assistant
10	Sheikh Muhammad Umar Farooq	Statistical Assistant
11.	Mr. Ansar Mahmood	Statistical Assistant

## **IT & SOFTWARE TEAM**

1.	Mrs. Sobia Munawar	Director (DP)
2.	Mr. Muhammad Ehtesham	Director (DP)
3.	Mr. Arsalan Bashir	Data Processing Officer
4.	Mr. Raja Aurangzeb	Data Processing Assistant
5.	Mr. Muhammad Kibria	Data Processing Assistant
6.	Mr. Muhammad Irfan Bajwa	Data Processing Assistant

## Inflation in Brief

- CPI inflation General**, increased by 24.9% on year-on-year basis in July 2022 as compared to an increase of 21.3% in the previous month and 8.4% in July 2021. On month-on-month basis, it increased by 4.3% in July 2022 as compared to an increase of 6.3% in the previous month and an increase of 1.3% in July 2021.
- CPI inflation Urban**, increased by 23.6% on year-on-year basis in July 2022 as compared to an increase of 19.8% in the previous month and 8.7% in July 2021. On month-on-month basis, it increased by 4.5% in July 2022 as compared to an increase of 6.2% in the previous month and an increase of 1.3% in July 2021.
- CPI inflation Rural**, increased by 26.9% on year-on-year basis in July 2022 as compared to an increase of 23.6% in the previous month and 8.0% in July 2021. On month-on-month basis, it increased by 4.2% in July 2022 as compared to an increase of 6.6% in the previous month and an increase of 1.4% in July 2021.
- SPI inflation** on YoY increased by 28.2% in July 2022 as compared to an increase of 21.7% a month earlier and an increase of 16.2% in July 2021. On MoM basis, it increased by 7.3% in July 2022 as compared to increase of 6.2% a month earlier and an increase of 1.8% in July 2021.
- WPI inflation** on YoY basis increased by 38.5% in July 2022 as compared to an increase of 38.9% a month earlier and an increase of 17.3% in July 2021. WPI inflation on MoM basis increased by 2.0% in July 2022 as compared to an increase of 8.2% a month earlier and increase of 2.3% in corresponding month i.e. July 2021.
- Figures 1 and 2 show graphically the yearly data of Table 1.a for Urban and Rural CPI while Table 1.1 shows "Period Average" and "YoY" percent changes in indices of three years.

Table 1.a General Inflation (%) (Base 2015-16)																		
PERIOD	CPI														SPI**		WPI	
	General						Food				Non-Food							
	National		Urban		Rural		Urban		Rural		Urban		Rural		YoY	MoM	YoY	MoM
	YoY	MoM	YoY	MoM	YoY	MoM	YoY	MoM	YoY	MoM	YoY	MoM	YoY	MoM				
Oct-20	8.9	1.7	7.3	1.3	11.3	2.4	13.9	2.8	17.7	4.3	3.6	0.3	5.8	0.5	12.3	3.0	5.1	2.9
Nov-20	8.3	0.8	7.0	0.6	10.5	1.1	13.0	1.6	16.1	2.0	3.4	0.1	5.5	0.2	9.9	1.1	5.0	-0.9
Dec-20	8.0	-0.7	7.0	-0.3	9.5	-1.2	12.6	-2.1	13.4	-3.4	3.8	0.7	6.1	1.0	9.1	-2.7	5.7	0.3
Jan-21	5.7	-0.2	5.0	-0.2	6.6	-0.3	7.3	-2.1	7.2	-2.2	3.7	1.1	6.1	1.5	7.7	-0.8	6.4	2.5
Feb-21	8.7	1.8	8.6	2.3	8.8	1.1	10.3	1.3	9.1	0.2	7.6	2.8	8.6	2.0	11.9	3.1	9.5	2.2
Mar-21	9.1	0.4	8.7	0.3	9.5	0.5	11.5	1.7	11.1	1.5	7.1	-0.6	8.1	-0.4	18.7	5.7	14.6	3.7
Apr-21	11.1	1.0	11.0	1.3	11.3	0.6	15.7	2.7	14.1	0.9	8.2	0.5	8.9	0.3	21.3	0.4	16.6	-0.4
May-21	10.9	0.1	10.8	0.2	10.9	-0.03	15.3	1.1	12.8	0.2	8.3	-0.3	9.2	-0.3	19.7	0.8	19.4	0.3
Jun-21	9.7	-0.3	9.6	-0.4	9.7	-0.1	11.0	-1.9	9.8	-0.8	8.8	0.5	9.7	0.6	17.6	-0.4	20.9	0.9
<b>Jul-21</b>	<b>8.4</b>	<b>1.3</b>	<b>8.7</b>	<b>1.3</b>	<b>8.0</b>	<b>1.4</b>	<b>9.4</b>	<b>1.5</b>	<b>7.3</b>	<b>1.6</b>	<b>8.2</b>	<b>1.1</b>	<b>8.7</b>	<b>1.2</b>	<b>16.2</b>	<b>1.8</b>	<b>17.3</b>	<b>2.3</b>
Aug-21	8.4	0.6	8.3	0.5	8.4	0.7	10.2	0.5	9.1	0.8	7.2	0.5	7.7	0.6	15.9	0.7	17.1	1.2
Sep-21	9.0	2.1	9.1	2.0	8.8	2.3	10.8	3.6	9.1	3.7	8.1	1.1	8.5	1.0	16.6	2.7	19.6	3.2
Oct-21	9.2	1.9	9.6	1.7	8.7	2.2	9.4	1.5	7.2	2.6	9.7	1.8	10.0	1.9	15.2	2.1	21.2	4.2
Nov-21	11.5	3.0	12.0	2.9	10.9	3.1	11.9	3.9	8.6	3.3	12.0	2.2	13.0	3.0	18.1	3.6	27.0	3.8
Dec-21	12.3	-0.02	12.7	0.3	11.6	-0.5	11.7	-2.3	9.0	-3.1	13.4	2.0	14.0	1.9	20.9	-0.4	26.2	-0.2
Jan-22	13.0	0.4	13.0	0.1	12.9	0.9	13.3	-0.8	11.8	0.4	12.8	0.6	13.9	1.4	20.9	-0.8	24.0	0.6
Feb-22	12.2	1.2	11.5	0.9	13.3	1.5	14.3	2.2	14.6	2.6	9.9	0.2	12.2	0.4	18.7	1.3	23.6	1.9
Mar-22	12.7	0.8	11.9	0.7	13.9	1.0	14.5	1.8	15.5	2.3	10.4	-0.1	12.5	-0.2	13.0	0.6	23.8	3.9
Apr-22	13.4	1.6	12.2	1.6	15.1	1.6	15.6	3.7	17.7	2.8	10.2	0.3	12.8	0.5	14.2	1.5	28.1	3.2
May-22	13.8	0.4	12.4	0.3	15.9	0.6	15.5	1.0	19.0	1.3	10.4	-0.1	13.1	0.0	14.1	0.6	29.6	1.4
<b>Jun-22</b>	<b>21.3</b>	<b>6.3</b>	<b>19.8</b>	<b>6.2</b>	<b>23.6</b>	<b>6.6</b>	<b>24.0</b>	<b>5.3</b>	<b>27.0</b>	<b>6.0</b>	<b>17.3</b>	<b>6.8</b>	<b>20.4</b>	<b>7.1</b>	<b>21.7</b>	<b>6.2</b>	<b>38.9</b>	<b>8.2</b>
<b>Jul-22</b>	<b>24.9</b>	<b>4.3</b>	<b>23.6</b>	<b>4.5</b>	<b>26.9</b>	<b>4.2</b>	<b>27.4</b>	<b>4.3</b>	<b>29.6</b>	<b>3.7</b>	<b>21.3</b>	<b>4.6</b>	<b>24.5</b>	<b>4.6</b>	<b>28.2</b>	<b>7.3</b>	<b>38.5</b>	<b>2.0</b>

\*\* SPI for quintile 1. Digits 0.0\* are due to rounding off.

### Core inflation (NFNE)

7. Measured by **non-food non-energy Urban** increased by 12.0% on (YoY) basis in July, 2022 as compared to an increase of 11.5% in the previous month and 6.9% in July, 2021. On (MoM) basis, it increased by 1.2% in July, 2022 as compared to an increase of 2.0% in previous month, and an increase of 0.8% in corresponding month of last year i.e. July, 2021.
8. Measured by **non-food non-energy Rural** increased by 14.6% on (YoY) basis in July, 2022 as compared to an increase of 13.6% in the previous month and 6.9% in July, 2021. On (MoM) basis, it increased by 1.6% in July, 2022 as compared to an increase of 2.3% in previous month, and an increase of 0.7% in corresponding month of last year i.e. July, 2021.

### Core inflation (Trimmed)

9. Measured by 20% **weighted trimmed mean Urban** increased by 19.1% on (YoY) basis in July, 2022 as compared to 16.7% in the previous month and 9.0% in July, 2021. On (MoM) basis, it increased by 2.7% in July, 2022 as compared to an increase of 3.5% in the previous month and an increase of 0.8% in corresponding month of last year i.e. July, 2021.
10. Measured by 20% **weighted trimmed mean Rural** increased by 21.7% on (YoY) basis in July, 2022 as compared to 19.1% in the previous month and by 8.4% in July, 2021. On (MoM) basis, it increased by 2.7% in July, 2022 as compared to an increase of 4.3% in the previous month and an increase of 0.8% in corresponding month of last year i.e. July, 2021.

**Table 1.b Core Inflation (%) (Base 2015-16)**

Period	NFNE				Trimmed			
	Urban		Rural		Urban		Rural	
	YoY	MoM	YoY	MoM	YoY	MoM	YoY	MoM
Jul-21	6.9	0.8	6.9	0.7	9.0	0.8	8.4	0.8
Aug-21	6.3	0.2	6.2	0.2	7.8	0.4	7.8	0.6
Sep-21	6.4	0.4	6.2	0.5	8.7	0.9	8.2	1.2
Oct-21	6.7	0.9	6.7	1.0	8.7	1.1	8.2	1.6
Nov-21	7.6	1.1	8.2	1.8	9.8	1.7	9.5	2.2
Dec-21	8.3	1.1	8.9	1.1	10.8	1.1	10.3	1.0
Jan-22	8.2	0.8	9.0	1.2	10.6	0.5	10.9	1.1
Feb-22	7.8	0.8	9.4	0.9	9.8	0.8	11.3	1.2
Mar-22	8.9	1.2	10.3	1.1	10.5	0.8	11.7	0.8
Apr-22	9.1	1.1	10.9	1.2	10.5	0.9	12.8	0.9
May-22	9.7	0.7	11.5	0.9	10.7	0.8	14.1	1.4
Jun-22	11.5	2.0	13.6	2.3	16.7	3.5	19.1	4.3
Jul-22	12.0	1.2	14.6	1.6	19.1	2.7	21.7	2.7

**Table 1.1 Period Average and Y-o-Y % Change**

INDEX	Average July- June % changes			June over June % changes		
	2021-2022	2020-2021	2019-2020	2021-2022	2020-2021	2019-2020
CPI (National)	12.15	8.90	10.74	21.32	9.65	8.59
CPI (Urban)	11.82	8.14	10.17	19.84	9.60	7.65
CPI (Rural)	12.65	10.04	11.63	23.55	9.73	10.03
SPI	17.10	13.83	13.74	21.65	17.58	11.51
WPI	24.91	9.41	10.24	38.94	20.85	0.93

Figure 1: Urban Inflation - YoY, Special Indices

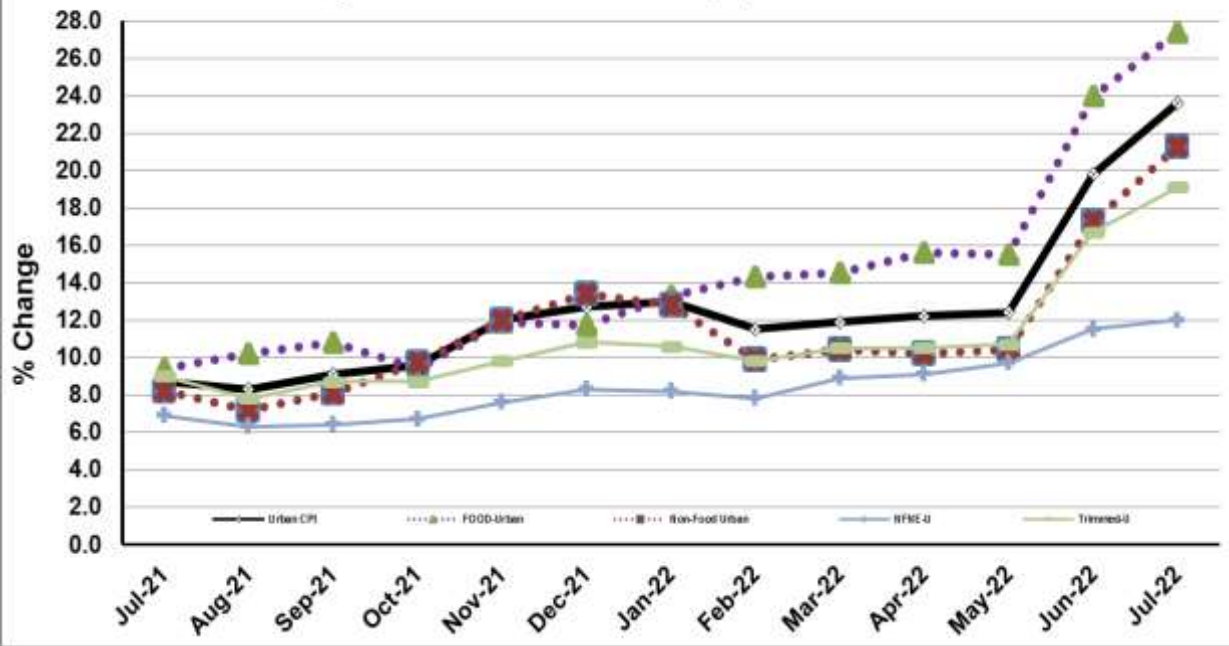


Figure 2: Rural Inflation - YoY, Special Indices

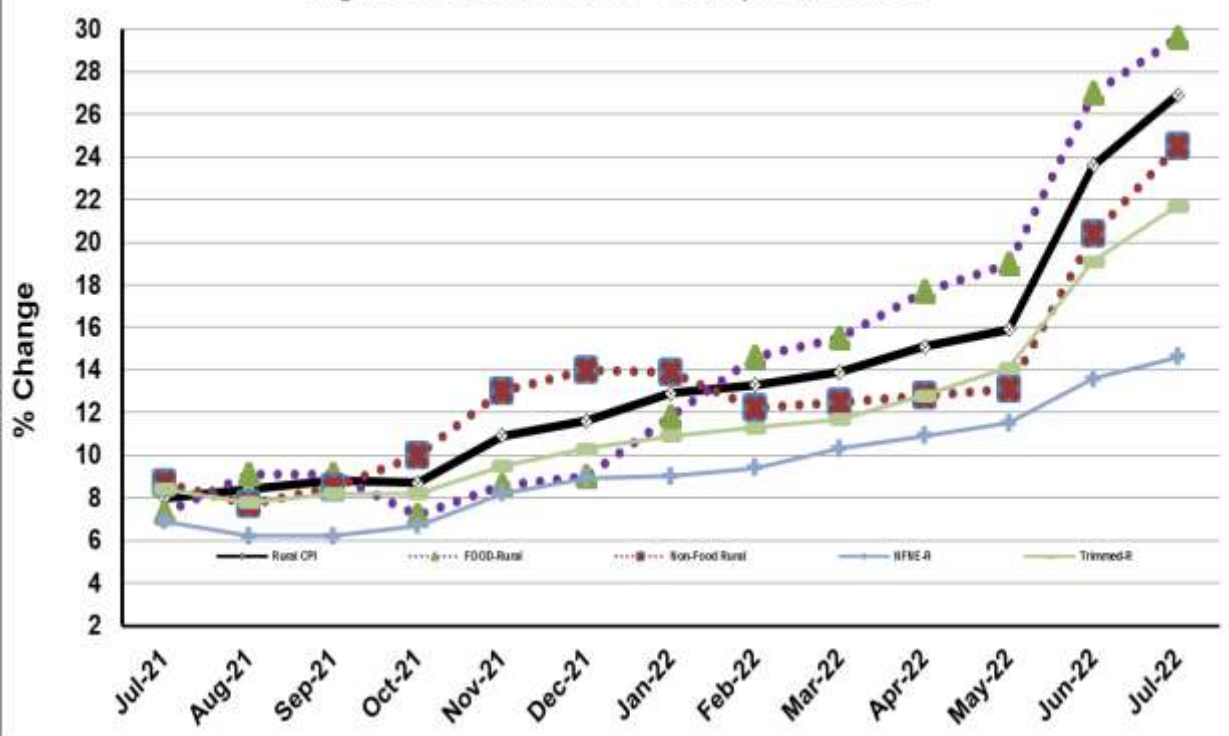


Figure 3: UCPI Inflation MoM, Special Indices

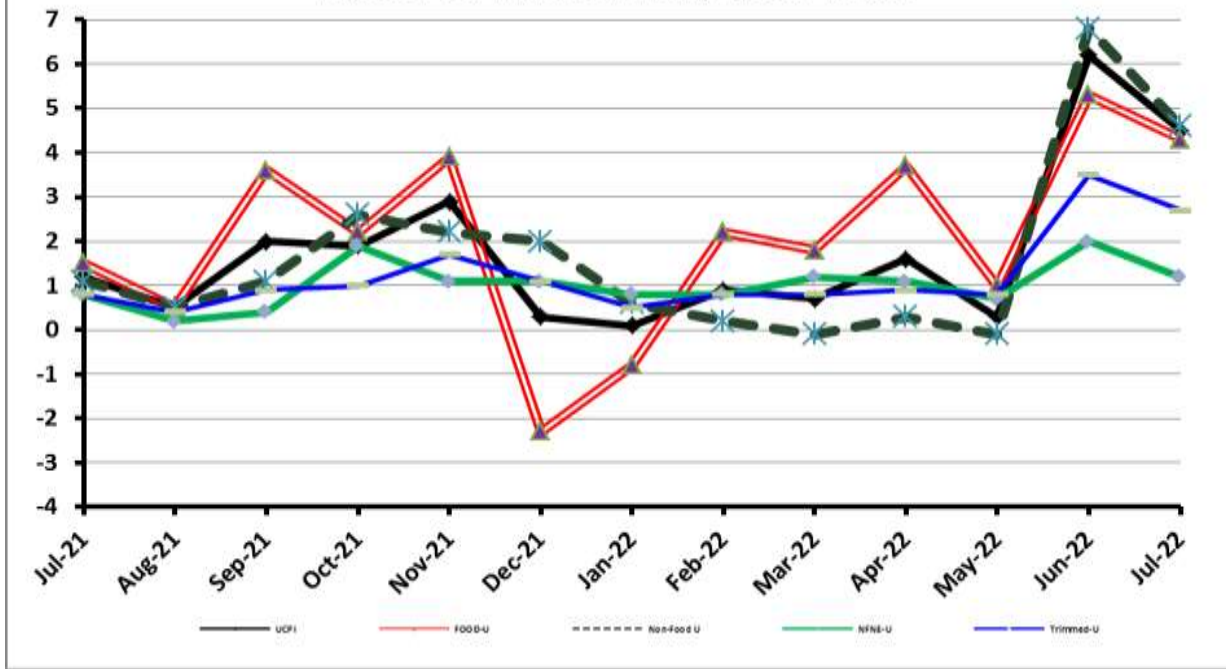


Figure 4: RPI Inflation MoM, Special Indices

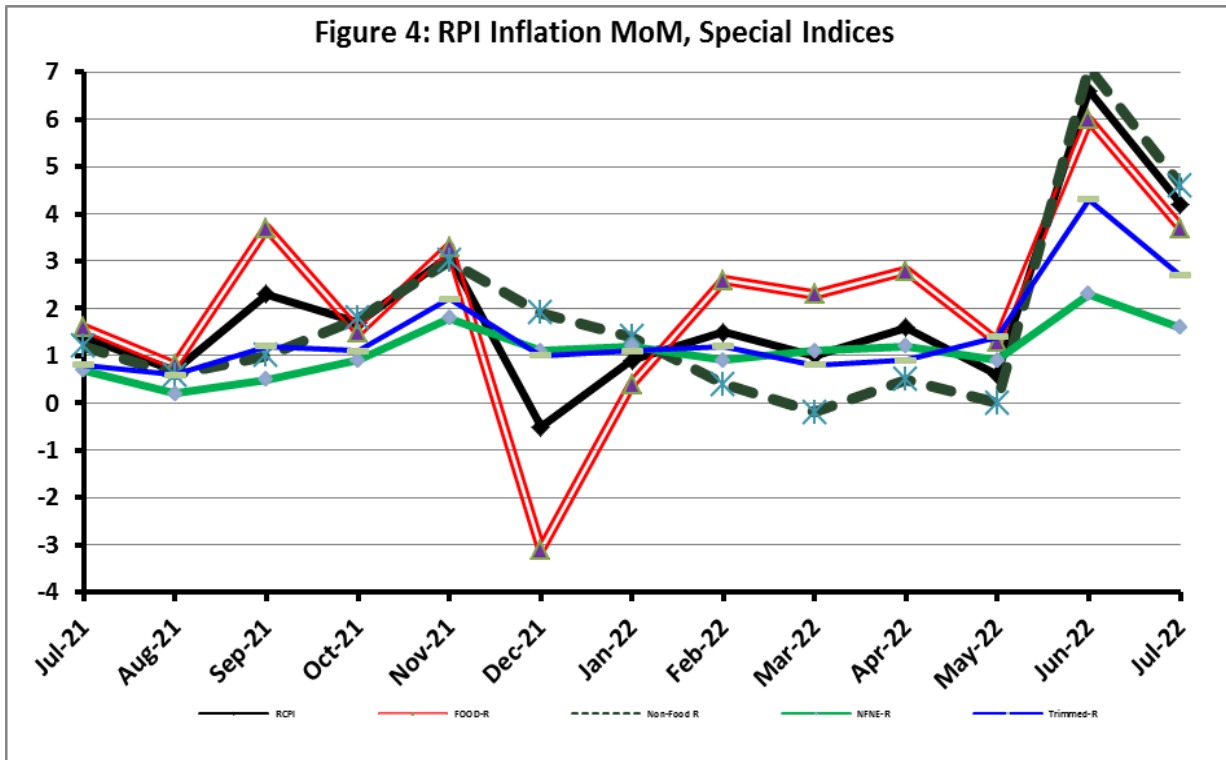




Figure 5: CPI Y.o.Y (National, Urban, Rural)

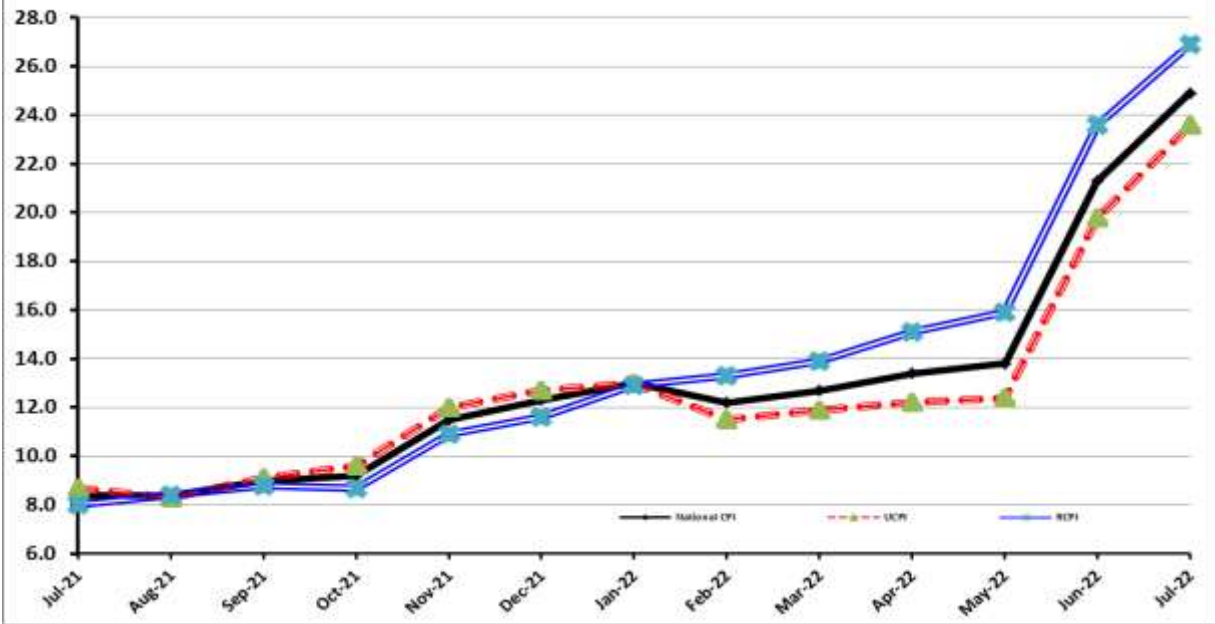
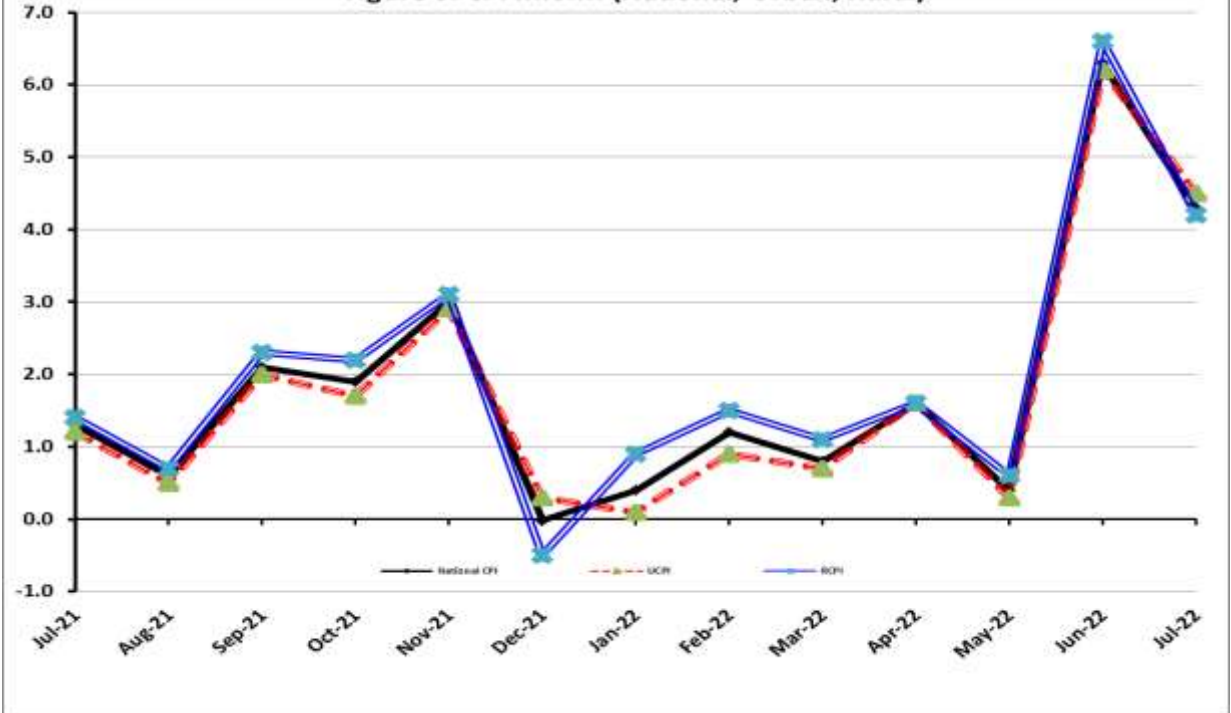


Figure 6: CPI M.o.M (National, Urban, Rural)



## I. National Consumer Price Index (N-CPI)

The **National Consumer Price Index** for **July 2022** is **increased** by 4.35% over **June 2022** and increased by 24.93% over corresponding month of the last year i.e. **July 2021**.

Table 1: Consumer Price Index (National) by Group of Commodities and Services (Base 2015-16)									
No	Group	Group Weight (%)	Indices			% Change July 2022 Over		Impact (In % points) July 2022 Over	
			July 22	June 22	July 21	June 22	July 21	June 22	July 21
	<b>General</b>	<b>100.00</b>	183.35	175.71	146.76	4.35	24.93	4.35	24.93
1.	Food & Non-alcoholic Bev.	34.58	195.27	187.67	151.65	4.05	28.77	1.50	10.28
	<i>Non-perishable Food Items</i>	29.60	196.37	189.48	153.27	3.63	28.12	1.16	8.69
	<i>Perishable Food Items</i>	4.99	188.77	176.90	142.01	6.71	32.93	0.34	1.59
2.	Alcoholic Bev. & Tobacco	1.02	177.22	170.27	144.69	4.08	22.48	0.04	0.23
3.	Clothing & Footwear	8.60	171.40	169.61	149.60	1.06	14.57	0.09	1.28
4.	Housing, Water, Electricity, Gas & Fuels	23.63	173.03	159.01	142.08	8.82	21.78	1.89	4.98
5.	Furnishing & Household Equipment Maintenance	4.10	171.41	168.60	143.21	1.67	19.69	0.07	0.79
6.	Health	2.79	171.65	171.32	154.33	0.19	11.22	0.01	0.33
7.	Transport	5.91	245.25	232.12	148.88	5.66	64.73	0.44	3.88
8.	Communication	2.21	111.22	110.78	109.94	0.40	1.16	0.01	0.02
9.	Recreation & Culture	1.59	147.91	145.62	128.17	1.58	15.41	0.02	0.21
10.	Education	3.79	159.53	158.67	145.30	0.54	9.79	0.02	0.37
11.	Restaurants & Hotels	6.92	179.77	174.69	143.85	2.91	24.97	0.20	1.69
12.	Miscellaneous	4.87	180.71	177.79	154.26	1.64	17.14	0.08	0.88



## II. Urban Consumer Price Index (UCPI)

The Urban Consumer Price Index for **July 2022** is increased by 4.47% over **June 2022** and increased by 23.60% over corresponding month of the last year i.e. **July 2021**.

Table 2: Consumer Price Index (Urban) by Group of Commodities and Services (Base 2015-16)

No	Group	Group Weight (%)	Indices			% Change July 2022 Over		Impact (In % points) July 2022 Over	
			July 22	June 22	July 21	June 22	July 21	June 22	July 21
	<b>General</b>	<b>100.00</b>	180.97	173.23	146.41	4.47	23.60	4.47	23.60
1.	Food & Non-alcoholic Bev.	30.42	193.81	185.86	151.66	4.28	27.79	1.40	8.76
	<i>Non-perishable Food Items</i>	25.97	194.52	187.42	153.10	3.79	27.05	1.07	7.35
	<i>Perishable Food Items</i>	4.46	189.66	176.75	143.23	7.30	32.42	0.33	1.41
2.	Alcoholic Bev. & Tobacco	0.85	187.28	182.04	153.94	2.88	21.66	0.03	0.19
3.	Clothing & Footwear	8.01	168.85	167.25	146.78	0.96	15.04	0.07	1.21
4.	Housing, Water, Electricity, Gas & Fuels	27.03	170.45	157.02	143.00	8.55	19.20	2.10	5.07
5.	Furnishing & Household Equip. & Maintenance	4.09	168.11	165.68	142.29	1.47	18.15	0.06	0.72
6.	Health	2.31	171.68	171.46	155.00	0.13	10.76	0.00	0.26
7.	Transport	6.14	246.08	233.01	150.24	5.61	63.79	0.46	4.02
8.	Communication	2.35	113.57	113.09	112.29	0.42	1.14	0.01	0.02
9.	Recreation & Culture	1.73	142.58	140.84	125.24	1.24	13.85	0.02	0.20
10.	Education	4.88	162.60	162.10	147.13	0.31	10.51	0.01	0.52
11.	Restaurants & Hotels	7.41	178.75	173.02	143.31	3.31	24.73	0.25	1.79
12.	Miscellaneous	4.77	179.12	176.62	153.38	1.42	16.78	0.07	0.84

Main contributors to month-on-month and year-on-year percentage changes are given below and detail is given in **Annexure-A**.

### 1. MONTH-ON-MONTH Top few commodities which varied from previous month are given below:

#### FOOD

**Increased:** Vegetables (25.14%), Pulse Gram (13.87%), Onions (13.65%), Potatoes (10.87%), Besan (10.01%), Wheat (9.76%), Pulse Mash (9.73%), Pulse Masoor (9.01%), Tea (8.98%), Eggs (8.09%), Cooking Oil (7.66%), Wheat Flour (6.34%), Gram whole (5.36%), Rice (5.16%), Vegetable Ghee (5.11%), Milk (3.84%) and Pulse Moong (2.67%).

**Decreased:** Tomatoes (12.46%), Fruits (7.11%) and Chicken (3.02%).

#### NON-FOOD

**Increased:** Electricity Charges (39.35%), Motor Fuel (7.35%), Construction Input Items (3.18%), Washing Soap/Detergents/Match Box (2.45%), Cotton Cloth (2.21%), Liquefied Hydrocarbons (1.99%), Electrical Appliances (1.48%), Plastic Products (1.40%) and Furniture & Furnishing (1.30%).

**YEAR-ON-YEAR:** Top few commodities which varied from corresponding month of previous year i.e. July, 2021 are given below:

#### FOOD

**Increased:** Pulse Masoor (92.43%), Onions (89.48%), Mustard Oil (81.95%), Vegetable Ghee (74.08%), Cooking Oil (72.56%), Gram whole (67.48%), Chicken (59.09%), Wheat (45.02%), Pulse Gram (43.24%), Vegetables (40.47%), Fruits (39.23%), Besan (37.52%), Pulse Mash (35.68%), Rice (31.22%), Meat (25.97%), Milk (24.75%), Eggs (23.74%), Tea (23.12%) and Beans (22.50%).

**Decreased:** Condiments & Spices (21.23%), Sugar (14.5%) and Pulse Moong (5.55%)

#### NON-FOOD

**Increased:** Motor Fuel (94.42%), Electricity Charges (86.72%), Liquefied Hydrocarbons (45.62%), Stationery (34.81%), Cleaning & Laundering (30.39%), Washing Soap/Detergents/Match Box (24.72%), Motor vehicle Accessories (22.38%), Construction Input Items (19.99%), Plastic Products (19.47%), Footwear (19.36%) and Cotton Cloth (18.15%).

### III. Rural Consumer Price Index (RCPI)

The Rural Consumer Price Index for July 2022 is increased by 4.17% over June 2022 and increased by 26.93% over corresponding month of the last year i.e. July 2021.

**Table 3: Consumer Price Index (Rural) by Group of Commodities and Services (Base 2015-16)**

No	Group	Group Weight (%)	Indices			% Change July 2022 Over		Impact (In % points) July 2022 Over	
			July 22	June 22	July 21	June 22	July 21	June 22	July 21
	<b>General</b>	<b>100.00</b>	186.94	179.45	147.28	4.17	26.93	4.17	26.93
1.	Food & Non-alcoholic Bev.	40.87	196.92	189.71	151.64	3.80	29.86	1.64	12.56
	<i>Non-perishable Food Items</i>	35.08	198.43	191.79	153.46	3.46	29.30	1.30	10.71
	<i>Perishable Food Items</i>	5.79	187.74	177.07	140.60	6.03	33.53	0.34	1.85
2.	Alcoholic Bev. & Tobacco	1.28	167.08	158.40	135.37	5.48	23.42	0.06	0.28
3.	Clothing & Footwear	9.48	174.66	172.61	153.20	1.19	14.01	0.11	1.38
4.	Housing, Water, Electricity, Gas & Fuels	18.49	178.72	163.39	140.05	9.38	27.61	1.58	4.85
5.	Furnishing & Household Equip. & Maintenance	4.10	176.37	172.99	144.60	1.95	21.97	0.08	0.89
6.	Health	3.51	171.62	171.19	153.66	0.25	11.69	0.01	0.43
7.	Transport	5.56	243.87	230.64	146.61	5.74	66.34	0.41	3.67
8.	Communication	1.99	107.05	106.68	105.77	0.35	1.21	0.00	0.02
9.	Recreation & Culture	1.38	158.03	154.68	133.72	2.17	18.18	0.03	0.23
10.	Education	2.13	148.94	146.84	138.99	1.43	7.16	0.03	0.14
11.	Restaurants & Hotels	6.19	181.62	177.70	144.82	2.21	25.41	0.14	1.55
12.	Miscellaneous	5.02	182.99	179.48	155.53	1.96	17.66	0.10	0.94

Main contributors to Month-on-Month and Year-on-Year percentage changes are given below and detail is given in **Annexure-B**.

#### 1. MONTH-ON-MONTH Top few commodities which varied from previous month are given below:

##### FOOD

**Increased:** Potatoes (19.94%), Vegetables (14.78%), Pulse Gram (14.59%), Pulse Masoor (9.60%), Eggs (9.05%), Pulse Mash (8.23%), Onions (7.15%), Wheat (7.06%), Tea (6.47%), Besan (6.14%), Rice (6.12%), Gram Whole (5.50%), Chicken (4.82%), Pulse Moong (4.79%), Milk (2.75%) and Condiments & Spices (2.33%).

**Decreased:** Tomatoes (13.44%), Fruits (5.11%), Cooking Oil (0.77%) and Mustard Oil (0.04%).

##### NON-FOOD

**Increased:** Electricity Charges (39.35%), Construction Input Items (7.84%), Motor Fuels (7.57%), Liquefied Hydrocarbons (4.62%), Plastic Products (3.62%), Stationery (2.73%), Household Equipments (2.38%), Hosiery (2.29%), Motor Vehicles Accessories (1.81%) and Furniture & Furnishing (1.77%).

#### 2. YEAR-ON-YEAR: Top few commodities which varied from corresponding month of previous year i.e. July 2021 are given below:

##### FOOD

**Increased:** Onions (100.03%), Pulse Masoor (90.46%), Cooking Oil (82.7%), Vegetable Ghee (82.22%), Mustard Oil (75.71%), Gram Whole (74.44%), Chicken (60.88%), Pulse Gram (48.36%), Fruits (45.99%), Vegetables (38.92%), Wheat (38.30%), Besan (34.10%), Rice (31.09%), Pulse Mash (30.61%), Beans (27.07%), Meat (25.69%), Eggs (25.17%) and Milk (21.51%).

**Decreased:** Sugar (13.78%) and Condiments & Spices (9.44%).

##### NON-FOOD

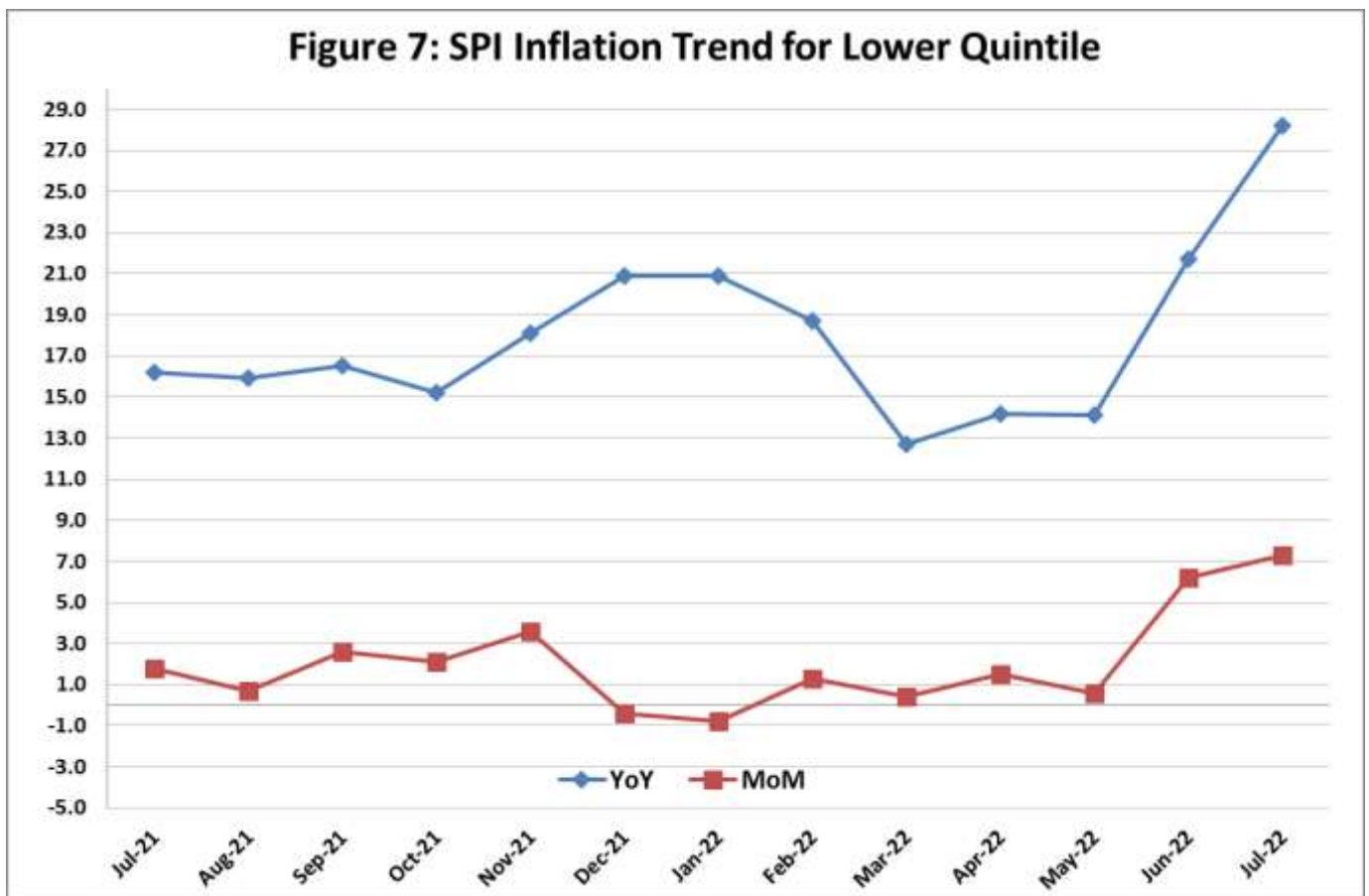
**Increased:** Motor Fuels (99.19%), Electricity Charges (86.72%), Liquefied Hydrocarbons (51.96%), Construction Input Items (36.44%), Motor Vehicles Accessories (26.96%), Cleaning & Laundering (26.18%), Washing Soaps/Detergents/Match Box (25.84%), Stationery (24.87%), Hosiery (21.85%), Furniture & Furnishing (20.15%) and Plastic Products (19.70%).

#### IV. Sensitive Price Indicator

Quintile-wise percentage changes YoY and MoM are given below in Table 4. The series from July 2021 to July 2022 is also graphed below in Figure 7.

Table 4: Sensitive Price Indicator (Base 2015-16)					
Quintiles	Indices			% Change July 2022 Over	
	July 22	June 22	July 21	June 22	July 21
1	207.98	193.89	162.25	7.27	28.18
2	200.45	184.02	151.37	8.93	32.42
3	201.15	187.33	152.63	7.38	31.79
4	197.56	185.14	148.91	6.71	32.67
5	203.13	189.78	150.30	7.03	35.15
<b>Combined</b>	201.88	187.41	150.33	7.72	34.29

Table 4.1 : Weekly Percentage Change of SPI During July - 2022				
Quintiles	% Change with Previous week			
	06-07-2022	14-07-2022	21-07-2022	28-07-2022
Quintile 1	0.83	-0.05	0.33	3.27
Combined	1.32	0.01	-0.22	3.68



## V. Wholesale Price Index

The Wholesale Price Index for July, 2022 increased by 1.99% over June, 2022. It increased by 38.55% over the corresponding month of the last year i.e. July, 2021. YoY and MoM movements, from July, 2021 to July, 2022 are also graphed below in Figure 8.

**Table 5: Wholesale Price Index by Group of Commodities (Base 2015-16)**

No	Group	Group Weight (%)	Indices			% Change July 2022 Over		Impact (In % points) July 2022 Over	
			July 22	June 22	July 21	June 22	July 21	June 22	July 21
	<b>General</b>	<b>100.00</b>	232.57	228.03	167.86	1.99	38.55	1.99	38.55
1	Agriculture Forestry & Fishery	25.77	209.28	224.50	169.70	-6.78	23.32	-1.72	6.07
2	Ores/Minerals, Elec., Gas & Water	12.01	214.49	184.03	168.51	16.55	27.29	1.60	3.29
3	Food, Beverages, Tobacco, Textiles & Leather Products	31.11	199.50	196.39	162.60	1.58	22.69	0.42	6.84
	i. Food Products, Beverages & Tobacco	20.07	198.74	196.98	158.66	0.89	25.26	0.16	4.79
	ii. Textiles & Apparels	10.33	204.82	198.51	173.22	3.18	18.24	0.29	1.94
	iii. Leather Products	0.71	143.51	149.01	119.35	-3.69	20.24	-0.02	0.10
4	Other Transportable Goods	22.40	322.51	306.76	173.26	5.13	86.14	1.55	19.92
5	Metal Product, Machinery & Equipment	8.72	213.23	209.74	166.42	1.66	28.13	0.13	2.43

Main contributors to month-on-month and year-on-year percentage changes are given below and detail is given in **Annexure-C**.

### 1. MONTH-ON-MONTH: Top few commodities which varied from previous month are given below:

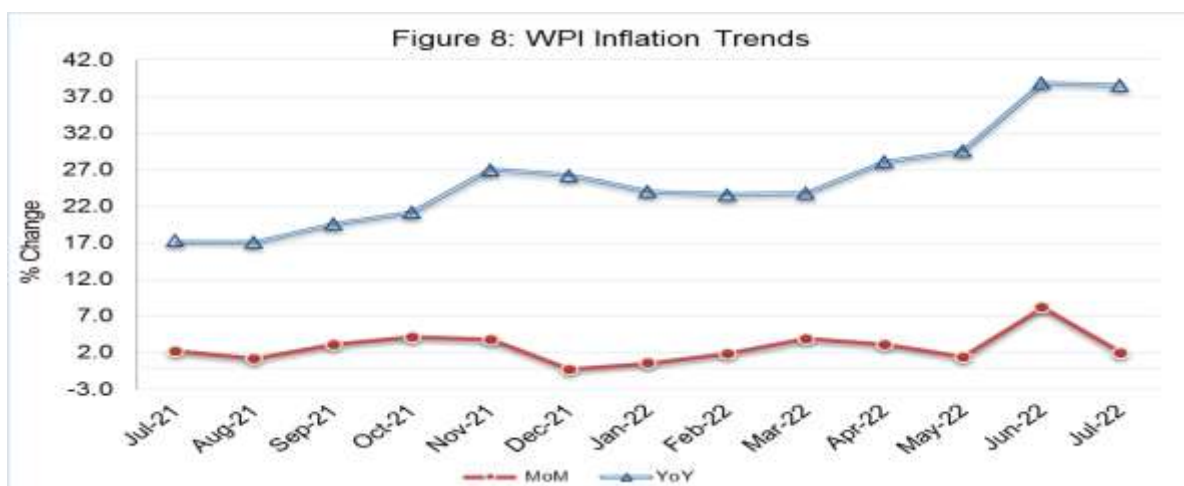
**Increased:** Electrical Energy (40.43%), Readymade Garments (27.37%), Fertilizers (23.91%), Hides, Skins & Fur Skins (19.46%), Glass Sheets (18.8%), Paints & Varnishes (12.84%), Stimulant & Spice Crops (12.47%), Cereal Flour (10.24%), Vegetables (10.20%), Tractors (9.82%), Timber (9.81%), Chuff Cutter (9.40%), Diesel (8.86%), Kerosene (8.64%), Wheat (8.51%), Potatoes (8.49%), Motor Spirit (8.12%) and Mobil Oil (6.98%).

**Decreased:** Fibre Crops (23.03%), Leather (4.92%), Poultry (4.50%), Oil Seeds (3.53%), Vegetable Ghee (2.39%), Furnace Oil (2.05%) and Vegetable Oil (0.46%).

### 2. YEAR-ON-YEAR: Top few commodities which varied from previous year are given below:

**Increased:** Chuff Cutter (150.92%), Kerosene (147.19%), Diesel (138.55%), Motor Spirit (109.02%), Furnace Oil (93.92%), Fertilizers (83.20%), Coal (79.42%), Vegetable Ghee (79.37%), Chemicals (76.55%), Cultivators (68.18%), Pulses (64.73%), Poultry (61.64%), Electrical Energy (60.88%), Vegetable Oil (56.04%), Cement (55.53%), Glass Sheets (53.17%), Wheat (46.11%), Footwear (41.34%), Cereal Flour (40.47%), Vegetables (39.35%), Maize (39.04%), Steel Bar & Sheets (38.46%), Paints & Varnishes (34.50%) and Readymade Garments (30.23%).

**Decreased:** Stimulant & Spice Crops (44.27%), Spices (40.35%) and Sugar (12.77%).



**Annexure A:CPI (Urban) Index Numbers by Commodity Groups & Commodities (2015-16=100)**

Item and Specification	Weight	Index Numbers			% Change in Jul 2022 over			
		Jul 22	Jun 22	Jul 21	Jun 2022	Jul 2021		
<b>General</b>	<b>100.0000</b>	<b>180.97</b>	<b>173.23</b>	<b>146.41</b>	<b>+</b>	<b>4.47</b>	<b>+</b>	<b>23.60</b>
<b>Food and non-alcoholic Bevera</b>	<b>30.4215</b>	<b>193.81</b>	<b>185.86</b>	<b>151.66</b>	<b>+</b>	<b>4.28</b>	<b>+</b>	<b>27.79</b>
01 Wheat	0.6120	223.30	203.44	153.98	+	9.76	+	45.02
02 Wheat flour	3.0075	182.49	171.61	147.46	+	6.34	+	23.76
03 Wheat products	0.0936	196.93	192.14	160.75	+	2.49	+	22.51
04 Besan	0.0830	172.44	156.75	125.39	+	10.01	+	37.52
05 Rice	1.1804	192.50	183.06	146.70	+	5.16	+	31.22
06 Bakery and confectionary	0.4770	185.75	182.23	148.47	+	1.93	+	25.11
07 Nimco	0.1224	202.38	193.49	144.86	+	4.59	+	39.71
08 Meat	2.0411	219.27	217.33	174.06	+	0.89	+	25.97
09 Chicken	1.3631	195.81	201.90	123.08	-	3.02	+	<u>59.09</u>
10 Fish	0.3855	124.55	124.55	112.86	+	0.00	+	10.36
11 Milk fresh	7.1070	177.89	171.31	142.60	+	3.84	+	24.75
12 Milk products	0.6407	177.39	172.73	146.68	+	2.70	+	20.94
13 Milk powder	0.3106	165.60	165.29	138.86	+	0.19	+	19.26
14 Eggs	0.5083	225.77	208.87	182.46	+	8.09	+	23.74
15 Butter	0.0932	242.50	233.91	195.19	+	3.67	+	24.24
16 Mustard oil	0.0120	307.27	302.41	168.88	+	1.61	+	<u>81.95</u>
17 Cooking oil	1.1016	324.70	301.59	188.17	+	7.66	+	<u>72.56</u>
18 Vegetable ghee	1.0324	343.66	326.94	197.41	+	5.11	+	<u>74.08</u>
19 Dry fruits	0.3299	155.76	154.18	137.03	+	1.02	+	13.67
20 Fresh fruits	1.4363	181.56	195.46	130.40	-	7.11	+	39.23
21 Pulse masoor	0.1624	204.57	187.66	106.31	+	9.01	+	<u>92.43</u>
22 Pulse moong	0.1697	114.78	111.79	121.52	+	2.67	-	5.55
23 Pulse mash	0.1152	142.88	130.21	105.31	+	9.73	+	35.68
24 Pulse gram	0.1660	183.38	161.05	128.02	+	13.87	+	43.24
25 Gram whole	0.0912	216.70	205.67	129.39	+	5.36	+	<u>67.48</u>
26 Beans	0.0408	196.47	194.67	160.39	+	0.92	+	22.50
27 Potatoes	0.4496	223.50	201.59	202.33	+	10.87	+	10.46
28 Onions	0.5928	202.86	178.50	107.06	+	13.65	+	<u>89.48</u>
29 Tomatoes	0.3459	164.72	188.17	154.80	-	12.46	+	6.41
30 Fresh vegetables	1.5306	188.21	150.40	133.99	+	25.14	+	40.47
31 Sugar	1.1130	142.35	140.58	166.50	+	1.26	-	14.50
32 Gur	0.0379	157.23	155.81	151.65	+	0.91	+	3.68
33 Honey	0.1017	156.51	156.46	131.84	+	0.03	+	18.71
34 Sweetmeat	0.3535	199.43	197.31	156.04	+	1.07	+	27.81
35 Ice cream	0.1044	149.17	148.70	146.34	+	0.32	+	1.93
36 Condiments and Spices	1.3340	174.89	172.79	222.03	+	1.22	-	21.23
37 Dessert preparation	0.0419	156.22	151.88	133.21	+	2.86	+	17.27
38 Tea	0.8427	173.40	159.11	140.84	+	8.98	+	23.12
39 Beverages	0.8906	150.57	148.52	131.44	+	1.38	+	14.55
<b>Alcoholic Beverages, Tobacco</b>	<b>0.8540</b>	<b>187.28</b>	<b>182.04</b>	<b>153.94</b>	<b>+</b>	<b>2.88</b>	<b>+</b>	<b>21.66</b>
40 Cigarettes	0.7167	171.44	167.05	141.09	+	2.63	+	21.51
41 Pan prepared	0.1373	269.99	260.32	221.00	+	3.71	+	22.17
<b>Clothing and footwear</b>	<b>8.0096</b>	<b>168.85</b>	<b>167.25</b>	<b>146.78</b>	<b>+</b>	<b>0.96</b>	<b>+</b>	<b>15.04</b>
42 Cotton cloth	2.2227	177.68	173.84	150.39	+	2.21	+	18.15
43 Woolen cloth	0.8361	160.08	157.31	141.25	+	1.76	+	13.33
44 Readymade garments	1.3196	151.40	151.09	139.34	+	0.21	+	8.66
45 Woolen readymade garments	0.4307	159.54	159.54	142.21	+	0.00	+	12.19
46 Tailoring	1.0741	171.38	170.63	152.45	+	0.44	+	12.42
47 Hosiery	0.4070	165.12	163.86	144.55	+	0.77	+	14.23
48 Dupatta	0.1713	141.78	141.20	129.93	+	0.41	+	9.12
49 Cleaning and laundering	0.0665	193.74	193.44	148.59	+	0.16	+	30.39
50 Footwear	1.4816	179.97	179.93	150.78	+	0.02	+	19.36
<b>Housing, water, Elec., Gas an</b>	<b>27.0332</b>	<b>170.45</b>	<b>157.02</b>	<b>143.00</b>	<b>+</b>	<b>8.55</b>	<b>+</b>	<b>19.20</b>
51 House rent	19.2558	147.94	145.80	140.07	+	1.47	+	5.62
52 Construction input items	0.3765	188.42	182.61	157.03	+	3.18	+	19.99
53 Construction wage rates	0.2025	177.08	174.25	157.85	+	1.62	+	12.18
54 Water supply	0.5269	166.58	166.58	158.84	+	0.00	+	4.87
55 Garbage collection	0.1064	200.69	197.91	174.58	+	1.40	+	14.96
56 Electricity charges	4.5562	245.55	176.21	131.51	+	39.35	+	<u>86.72</u>
57 Gas charges	1.0807	216.94	216.94	216.94	+	0.00	+	0.00
58 Liquefied Hydrocarbons	0.5064	260.68	255.60	179.02	+	1.99	+	45.62
59 Solid Fuel	0.4218	137.45	136.86	120.73	+	0.43	+	13.85

**Annexure A:CPI (Urban) Index Numbers by Commodity Groups & Commodities (2015-16=100)**

Item and Specification	Weight	Index Numbers			% Change in Jul 2022 over			
		Jul 22	Jun 22	Jul 21	Jun 2022	Jul 2021		
<b><i>Furnishing and household equi</i></b>	<b>4.0937</b>	<b>168.11</b>	<b>165.68</b>	<b>142.29</b>	<b>+</b>	<b>1.47</b>	<b>+</b>	<b>18.15</b>
60 Furniture and furnishing	0.4750	164.90	162.78	143.57	+	1.30	+	14.86
61 Carpets	0.0308	125.99	125.72	113.24	+	0.21	+	11.26
62 Household textiles	0.3420	145.37	144.90	135.54	+	0.32	+	7.25
63 Household equipments	1.0032	171.13	169.74	145.78	+	0.82	+	17.39
64 Plastic products	0.0536	150.17	148.09	125.70	+	1.40	+	19.47
65 Major tools & equipments	0.0084	169.47	167.93	138.67	+	0.92	+	22.21
66 Washing soap/detergents/match	1.4112	182.01	177.65	145.93	+	2.45	+	24.72
67 Household servant	0.7695	153.66	152.26	135.61	+	0.92	+	13.31
<b><i>Health</i></b>	<b>2.3098</b>	<b>171.68</b>	<b>171.46</b>	<b>155.00</b>	<b>+</b>	<b>0.13</b>	<b>+</b>	<b>10.76</b>
68 Drugs and medicines	1.0735	174.21	173.82	154.71	+	0.22	+	12.60
69 Therapeutic Appliances and Eq	0.0054	123.13	123.13	116.66	+	0.00	+	5.55
70 Doctor (MBBS) clinic fee	0.4044	213.19	213.15	192.56	+	0.02	+	10.71
71 Dental services	0.0156	138.06	138.06	128.98	+	0.00	+	7.04
72 Medical tests	0.2367	149.45	149.22	134.74	+	0.15	+	10.92
73 Hospitals services	0.5742	148.22	148.22	138.50	+	0.00	+	7.02
<b><i>Transport</i></b>	<b>6.1368</b>	<b>246.08</b>	<b>233.01</b>	<b>150.24</b>	<b>+</b>	<b>5.61</b>	<b>+</b>	<b>63.79</b>
74 Motor vehicles	0.8097	188.32	186.84	151.83	+	0.79	+	24.03
75 Motor vehicle accessories	0.1941	174.77	173.04	142.81	+	1.00	+	22.38
76 Motor fuel	2.9088	319.65	297.76	164.41	+	7.35	+	94.42
77 Mechanical services	0.4290	162.87	160.00	138.01	+	1.79	+	18.01
78 Motor vehicle tax	0.0482	136.37	136.37	136.37	+	0.00	+	0.00
79 Transport services	1.7470	181.74	173.86	130.13	+	4.53	+	39.66
<b><i>Communication</i></b>	<b>2.3536</b>	<b>113.57</b>	<b>113.09</b>	<b>112.29</b>	<b>+</b>	<b>0.42</b>	<b>+</b>	<b>1.14</b>
80 Postal services	0.0190	184.35	184.35	163.41	+	0.00	+	12.81
81 Communication apparatus	0.4524	131.57	131.43	128.14	+	0.11	+	2.68
82 Communication Services	1.8822	108.53	107.97	107.97	+	0.52	+	0.52
<b><i>Recreation and culture</i></b>	<b>1.7301</b>	<b>142.58</b>	<b>140.84</b>	<b>125.24</b>	<b>+</b>	<b>1.24</b>	<b>+</b>	<b>13.85</b>
83 Recreation and culture	0.6478	123.92	123.40	114.76	+	0.42	+	7.98
84 Text books	0.6655	138.87	137.89	127.71	+	0.71	+	8.74
85 Newspapers	0.0716	157.93	157.93	151.55	+	0.00	+	4.21
86 stationery	0.3452	181.56	175.73	134.68	+	3.32	+	34.81
<b><i>Education</i></b>	<b>4.8807</b>	<b>162.60</b>	<b>162.10</b>	<b>147.13</b>	<b>+</b>	<b>0.31</b>	<b>+</b>	<b>10.51</b>
87 Education	4.8807	162.60	162.10	147.13	+	0.31	+	10.51
<b><i>Restaurants and hotels</i></b>	<b>7.4050</b>	<b>178.75</b>	<b>173.02</b>	<b>143.31</b>	<b>+</b>	<b>3.31</b>	<b>+</b>	<b>24.73</b>
88 Readymade food	5.5235	183.51	175.90	145.70	+	4.33	+	25.95
89 Marriage Hall Charges	1.7514	167.88	167.64	137.97	+	0.14	+	21.68
90 Accommodation Services	0.1301	122.86	122.86	113.30	+	0.00	+	8.44
<b><i>Misc. goods and services</i></b>	<b>4.7720</b>	<b>179.12</b>	<b>176.62</b>	<b>153.38</b>	<b>+</b>	<b>1.42</b>	<b>+</b>	<b>16.78</b>
91 Personal Grooming Services	0.8001	163.58	158.05	138.39	+	3.50	+	18.20
92 Electrical Appliances for Per	0.0465	137.58	135.58	118.50	+	1.48	+	16.10
93 Appliances/Articles/Products	2.9807	167.02	164.14	144.24	+	1.75	+	15.79
94 Personal Effects n.e.c.	0.9447	232.52	233.75	196.65	-	0.53	+	18.24

**Annexure B:CPI (Rural) Index Numbers by Commodity Groups & Commodities (2015-16=100)**

Item and Specification	Weight	Index Numbers			% Change in Jul 2022 over	
		Jul 22	Jun 22	Jul 21	Jun 2022	Jul 2021
<b>General</b>	<b>100.0000</b>	<b>186.94</b>	<b>179.45</b>	<b>147.28</b>	<b>+ 4.17</b>	<b>+ 26.93</b>
<b>Food and non-alcoholic Bevera</b>	<b>40.8668</b>	<b>196.92</b>	<b>189.71</b>	<b>151.64</b>	<b>+ 3.80</b>	<b>+ 29.86</b>
01 Wheat	3.4736	212.38	198.38	153.57	+ 7.06	+ 38.30
02 Wheat Flour	3.4297	182.59	171.61	150.27	+ 6.40	+ 21.51
03 Wheat Products	0.1068	188.05	179.03	150.20	+ 5.04	+ 25.20
04 Besan	0.0728	171.60	161.68	127.96	+ 6.14	+ 34.10
05 Rice	1.5501	246.17	231.98	187.79	+ 6.12	+ 31.09
06 Bakery and Confectionary	0.3702	195.79	187.16	147.38	+ 4.61	+ 32.85
07 Nimco	0.0774	188.71	180.31	132.95	+ 4.66	+ 41.94
08 Meat	1.7146	217.55	216.72	173.08	+ 0.38	+ 25.69
09 Chicken	1.4641	212.38	202.62	132.01	+ 4.82	+ <u>60.88</u>
10 Fish	0.2640	140.85	138.34	123.70	+ 1.81	+ 13.86
11 Milk fresh	10.3803	167.63	163.14	137.96	+ 2.75	+ 21.51
12 Milk products	0.9624	160.70	156.91	135.28	+ 2.42	+ 18.79
13 Milk powder	0.1062	139.58	138.45	129.71	+ 0.82	+ 7.61
14 Eggs	0.5665	216.79	198.79	173.20	+ 9.05	+ 25.17
15 Butter	0.3333	179.52	177.79	147.72	+ 0.97	+ 21.53
16 Mustard oil	0.0136	303.50	303.63	172.73	- 0.04	+ <u>75.71</u>
17 Cooking oil	0.6011	368.32	371.16	201.60	- 0.77	+ <u>82.70</u>
18 Vegetable ghee	2.3764	377.49	374.21	207.16	+ 0.88	+ <u>82.22</u>
19 Dry fruits	0.2496	176.04	175.65	155.00	+ 0.22	+ 13.57
20 Fresh fruits	1.4505	196.45	207.02	134.56	- 5.11	+ 45.99
21 Pulse Masoor	0.2076	215.01	196.18	112.89	+ 9.60	+ <u>90.46</u>
22 Pulse Moong	0.2510	127.44	121.61	128.14	+ 4.79	- 0.55
23 Pulse Mash	0.1465	139.23	128.64	106.60	+ 8.23	+ 30.61
24 Pulse Gram	0.2751	182.64	159.38	123.11	+ 14.59	+ 48.36
25 Gram Whole	0.1116	221.90	210.34	127.21	+ 5.50	+ <u>74.44</u>
26 Beans	0.0896	216.70	212.70	170.54	+ 1.88	+ 27.07
27 Potatoes	0.7437	246.08	205.17	230.71	+ 19.94	+ 6.66
28 Onions	0.8965	188.63	176.05	94.30	+ 7.15	+ <u>100.0</u>
29 Tomatoes	0.5069	157.90	182.41	147.37	- 13.44	+ 7.15
30 Fresh Vegetables	2.0947	168.01	146.37	120.94	+ 14.78	+ 38.92
31 Sugar	2.0296	142.32	141.92	165.06	+ 0.28	- 13.78
32 Gur	0.1522	150.38	148.99	152.07	+ 0.93	- 1.11
33 Honey	0.0296	162.12	160.95	137.87	+ 0.73	+ 17.59
34 Sweetmeat	0.3967	183.13	178.91	141.14	+ 2.36	+ 29.75
35 Ice Cream	0.0568	148.26	148.26	142.03	+ 0.00	+ 4.39
36 Condiments and Spices	1.4919	168.21	164.38	185.75	+ 2.33	- 9.44
37 Dessert Preparation	0.0133	153.80	146.34	132.10	+ 5.10	+ 16.43
38 Tea	1.2566	166.44	156.32	138.10	+ 6.47	+ 20.52
39 Beverages	0.5537	148.31	145.17	133.06	+ 2.16	+ 11.46
<b>Alcoholic Beverages, Tobacco</b>	<b>1.2786</b>	<b>167.08</b>	<b>158.40</b>	<b>135.37</b>	<b>+ 5.48</b>	<b>+ 23.42</b>
40 Cigarettes	1.2364	164.88	156.34	133.97	+ 5.46	+ 23.07
41 Pan Prepared	0.0422	231.68	218.86	176.12	+ 5.86	+ 31.55
<b>Clothing and footwear</b>	<b>9.4826</b>	<b>174.66</b>	<b>172.61</b>	<b>153.20</b>	<b>+ 1.19</b>	<b>+ 14.01</b>
42 Cotton Cloth	2.8381	192.47	190.35	169.22	+ 1.11	+ 13.74
43 Woolen Cloth	1.0959	168.22	164.60	144.22	+ 2.20	+ 16.64
44 Readymade Garments	1.1345	165.10	164.68	144.78	+ 0.26	+ 14.04
45 Woolen Readymade Garments	0.5401	164.85	164.85	143.31	+ 0.00	+ 15.03
46 Tailoring	1.2999	175.69	172.20	151.62	+ 2.03	+ 15.88
47 Hosiery	0.4322	224.89	219.86	184.57	+ 2.29	+ 21.85
48 Dupatta	0.2078	162.96	161.54	143.75	+ 0.88	+ 13.36
49 Cleaning and Laundering	0.0176	181.91	181.91	144.17	+ 0.00	+ 26.18
50 Footwear	1.9165	149.57	148.54	137.49	+ 0.69	+ 8.79
<b>Housing, water, Elec., Gas an</b>	<b>18.4853</b>	<b>178.72</b>	<b>163.39</b>	<b>140.05</b>	<b>+ 9.38</b>	<b>+ 27.61</b>
51 House Rent	8.6110	148.48	146.50	140.21	+ 1.35	+ 5.90
52 Construction Input Items	0.6306	181.05	167.89	132.70	+ 7.84	+ 36.44
53 Construction Wage Rates	0.2526	179.69	177.29	160.04	+ 1.35	+ 12.28
54 Water Supply	0.0645	220.09	220.09	216.56	+ 0.00	+ 1.63
55 Garbage Collection	0.0080	169.61	165.51	154.75	+ 2.48	+ 9.60
56 Electricity Charges	3.4431	245.55	176.21	131.51	+ 39.35	+ <u>86.72</u>
57 Liquefied Hydrocarbons	0.9994	236.20	225.77	155.44	+ 4.62	+ <u>51.96</u>
58 Solid Fuel	4.4761	171.69	169.85	141.64	+ 1.08	+ 21.22



**Annexure B:CPI (Rural) Index Numbers by Commodity Groups & Commodities (2015-16=100)**

Item and Specification	Weight	Index Numbers			% Change in Jul 2022 over			
		Jul 22	Jun 22	Jul 21	Jun 2022	Jul 2021		
<b><i>Furnishing and household equi</i></b>	<b>4.1031</b>	<b>176.37</b>	<b>172.99</b>	<b>144.60</b>	<b>+</b>	<b>1.95</b>	<b>+</b>	<b>21.97</b>
59 Furniture and Furnishing	0.5786	176.05	172.98	146.53	+	1.77	+	20.15
60 Household Textiles	0.4382	157.99	155.67	134.08	+	1.49	+	17.83
61 Household Equipments	1.2774	182.43	178.19	152.70	+	2.38	+	19.47
62 Plastic Products	0.0776	191.32	184.64	159.83	+	3.62	+	19.70
63 Major Tools and Equipments	0.0324	155.85	153.78	129.61	+	1.35	+	20.25
64 Washing Soaps, Detergents and	1.6989	176.37	173.38	140.15	+	1.72	+	25.84
<b><i>Health</i></b>	<b>3.5141</b>	<b>171.62</b>	<b>171.19</b>	<b>153.66</b>	<b>+</b>	<b>0.25</b>	<b>+</b>	<b>11.69</b>
65 Drugs and Medicines	1.5792	178.74	178.36	154.89	+	0.21	+	15.40
66 Doctor Clinic Fee	0.5128	212.46	211.30	190.32	+	0.55	+	11.63
67 Dental Services	0.0181	145.35	144.13	132.61	+	0.85	+	9.61
68 Medical Tests	0.3967	163.56	163.45	154.62	+	0.07	+	5.78
69 Hospitals Services	1.0073	143.31	143.04	133.08	+	0.19	+	7.69
<b><i>Transport</i></b>	<b>5.5580</b>	<b>243.87</b>	<b>230.64</b>	<b>146.61</b>	<b>+</b>	<b>5.74</b>	<b>+</b>	<b>66.34</b>
70 Motor Vehicles	0.7305	155.65	151.65	134.36	+	2.64	+	15.85
71 Motor Vehicles Accessories	0.1572	183.46	180.19	144.50	+	1.81	+	26.96
72 Motor Fuels	2.4932	321.32	298.70	161.31	+	7.57	+	99.19
73 Mechanical Services	0.3645	173.50	169.94	156.82	+	2.09	+	10.64
74 Motor Vehicle Tax	0.0174	120.86	120.86	132.92	+	0.00	-	9.07
75 Transport Services	1.7952	192.97	186.07	129.42	+	3.71	+	49.10
<b><i>Communication</i></b>	<b>1.9940</b>	<b>107.05</b>	<b>106.68</b>	<b>105.77</b>	<b>+</b>	<b>0.35</b>	<b>+</b>	<b>1.21</b>
76 Postal Services	0.0070	149.43	149.43	149.43	+	0.00	+	0.00
77 Communication Apparatus	0.3362	128.14	126.69	121.31	+	1.14	+	5.63
78 Communication Services	1.6508	102.58	102.42	102.42	+	0.16	+	0.16
<b><i>Recreation and culture</i></b>	<b>1.3764</b>	<b>158.03</b>	<b>154.68</b>	<b>133.72</b>	<b>+</b>	<b>2.17</b>	<b>+</b>	<b>18.18</b>
79 Recreation and Culture	0.4763	162.15	156.27	136.03	+	3.76	+	19.20
80 Text Books	0.5047	135.85	135.85	121.01	+	0.00	+	12.26
81 Newspapers	0.0230	165.72	165.72	165.56	+	0.00	+	0.10
82 Stationery	0.3724	182.34	177.50	146.02	+	2.73	+	24.87
<b><i>Education</i></b>	<b>2.1342</b>	<b>148.94</b>	<b>146.84</b>	<b>138.99</b>	<b>+</b>	<b>1.43</b>	<b>+</b>	<b>7.16</b>
83 Education	2.1342	148.94	146.84	138.99	+	1.43	+	7.16
<b><i>Restaurants and hotels</i></b>	<b>6.1895</b>	<b>181.62</b>	<b>177.70</b>	<b>144.82</b>	<b>+</b>	<b>2.21</b>	<b>+</b>	<b>25.41</b>
84 Readymade Food	3.8001	202.27	197.20	156.50	+	2.57	+	29.25
85 Marriage Hall Charges	2.2525	151.42	149.20	127.75	+	1.49	+	18.53
86 Accommodation Services	0.1369	105.32	105.32	101.62	+	0.00	+	3.64
<b><i>Misc. goods and services</i></b>	<b>5.0174</b>	<b>182.99</b>	<b>179.48</b>	<b>155.53</b>	<b>+</b>	<b>1.96</b>	<b>+</b>	<b>17.66</b>
87 Personal Grooming Services	1.5363	192.82	186.66	160.44	+	3.30	+	20.18
88 Appliances/Articles/Products	2.2746	150.61	148.63	133.83	+	1.33	+	12.54
89 Personal Effects n.e.c.	1.2065	231.53	228.48	190.18	+	1.33	+	21.74

## Annexure C: Wholesale Price Indices by Major Groups &amp; Commodities

(2015-16=100)

Item and Specification	Weight	Index Numbers			% Change in Jul 2022 over			
		Jul 22	Jun 22	Jul 21	Jun 2022	Jul 2021		
<b>General</b>	<b>100.0000</b>	<b>232.57</b>	<b>228.03</b>	<b>167.86</b>	<b>+</b>	<b>1.99</b>	<b>+</b>	<b>38.55</b>
<b>Agriculture Forestry &amp; Fisher</b>	<b>25.7674</b>	<b>209.28</b>	<b>224.50</b>	<b>169.70</b>	<b>-</b>	<b>6.78</b>	<b>+</b>	<b>23.32</b>
001 Wheat	0.6297	222.71	205.24	152.43	+	8.51	+	46.11
002 Maize	0.6764	217.63	214.92	156.52	+	1.26	+	39.04
003 Rice	2.4413	214.90	209.98	176.29	+	2.34	+	21.90
004 Sorghum / Jowar	0.0214	224.26	222.88	213.89	+	0.62	+	4.85
005 Millet / Bajra	0.0374	212.19	211.77	235.14	+	0.20	-	9.76
006 Vegetables	1.2441	214.26	194.42	153.76	+	10.20	+	39.35
007 Fresh Fruits	1.5144	198.99	198.40	162.54	+	0.30	+	22.43
008 Dry Fruits	0.2478	148.60	146.28	138.25	+	1.59	+	7.49
009 Cotton Seeds	1.1511	161.18	161.47	141.78	-	0.18	+	13.68
010 Other Oil Seeds	0.0722	282.37	292.71	210.84	-	3.53	+	33.93
011 Edible Roots / Potatoes	0.2540	262.22	241.69	252.28	+	8.49	+	3.94
012 Stimulant & Spice Crops	0.1634	209.80	186.54	376.43	+	12.47	-	44.27
013 Pulses	0.4901	207.38	197.11	125.89	+	5.21	+	64.73
014 Sugar Crops	1.0725	157.93	157.93	139.03	+	0.00	+	13.59
015 Fibre Crops	5.3169	304.62	395.77	242.73	-	23.03	+	25.50
016 Unmanufactured Tobacco	0.0742	273.77	270.28	239.17	+	1.29	+	14.47
017 Poultry	0.5633	190.90	199.90	118.10	-	4.50	+	61.64
018 Raw Milk from Bovine Animals	7.0279	173.64	170.45	139.47	+	1.87	+	24.50
019 Eggs	0.5034	222.19	207.76	178.57	+	6.95	+	24.43
020 Raw Animal Materials / Wool	0.0351	109.44	109.44	107.08	+	0.00	+	2.20
021 Hides, Skins & Fur Skins, Raw	0.4834	45.00	37.67	34.06	+	19.46	+	32.12
022 Fuel Wood in Logs	0.0179	132.23	131.78	127.94	+	0.34	+	3.35
023 Fish Live Fresh or Chilled	1.7295	160.45	160.45	158.03	+	0.00	+	1.53
<b>Ores/Minerals, Elec., Gas &amp; W</b>	<b>12.0069</b>	<b>214.49</b>	<b>184.03</b>	<b>168.51</b>	<b>+</b>	<b>16.55</b>	<b>+</b>	<b>27.29</b>
024 Coal not Agglomerated	0.7508	135.98	135.98	75.79	+	0.00	+	79.42
025 Natural Gas Liquefied	5.7065	210.10	209.70	205.35	+	0.19	+	2.31
026 Salt & Pure Sodium Chloride	0.0584	205.81	205.81	169.23	+	0.00	+	21.62
027 Electrical Energy	5.4912	229.88	163.70	142.89	+	40.43	+	60.88
<b>Food, Beverages, Tobacco, Textil</b>	<b>31.1122</b>	<b>199.50</b>	<b>196.39</b>	<b>162.60</b>	<b>+</b>	<b>1.58</b>	<b>+</b>	<b>22.69</b>
<b>Food Products, Beverages &amp;</b>	<b>20.0718</b>	<b>198.74</b>	<b>196.98</b>	<b>158.66</b>	<b>+</b>	<b>0.89</b>	<b>+</b>	<b>25.26</b>
028 Meat of Animals	3.4559	212.66	211.73	180.46	+	0.44	+	17.84
029 Vegetables & Fruit Juice	0.0058	144.21	142.96	122.54	+	0.87	+	17.68
030 Dried Fruits & Nuts	0.1733	196.85	194.21	177.03	+	1.36	+	11.20
031 Fruit Juices	0.3880	146.22	145.71	131.77	+	0.35	+	10.97
032 Vegetable Oils Refined	1.9242	261.93	263.13	167.86	-	0.46	+	56.04
033 Vegetable Ghee	1.5632	362.84	371.71	202.29	-	2.39	+	79.37
034 Oil Cakes	0.9611	210.10	211.42	159.65	-	0.62	+	31.60
035 Processed Liquid Milk	4.4437	163.75	163.14	143.51	+	0.37	+	14.10
036 Milk & Cream in Solid Form	0.0316	172.11	169.79	135.88	+	1.37	+	26.66
037 Ice Cream	0.0047	148.21	148.21	147.94	+	0.00	+	0.18
038 Dairy Products N.E.C	0.0117	159.90	160.19	138.56	-	0.18	+	15.40
039 Wheat Flour	2.3034	193.76	181.58	152.49	+	6.71	+	27.06
040 Other Cereal Flour	0.0604	176.09	159.74	125.36	+	10.24	+	40.47
041 Sugar Refined	1.7975	145.23	144.23	166.49	+	0.69	-	12.77
042 Chocolate	0.0139	90.05	90.05	89.03	+	0.00	+	1.15
043 Sugar Confectionary	0.0738	189.30	189.30	187.66	+	0.00	+	0.87
044 Coffee & Tea	0.7303	159.65	151.93	129.91	+	5.08	+	22.89
045 Spices	0.1449	204.02	203.23	342.05	+	0.39	-	40.35
046 Other Food Products	0.0336	121.28	121.02	119.35	+	0.21	+	1.62
047 Mineral Water	0.0207	152.28	140.52	125.24	+	8.37	+	21.59
048 Beverages	0.6303	147.36	141.61	129.86	+	4.06	+	13.48
049 Tobacco Products	1.2998	134.10	129.61	104.23	+	3.46	+	28.66
<b>Textiles &amp; Apparels</b>	<b>10.3289</b>	<b>204.82</b>	<b>198.51</b>	<b>173.22</b>	<b>+</b>	<b>3.18</b>	<b>+</b>	<b>18.24</b>
050 Cotton Yarn	5.2491	239.61	239.61	203.51	+	0.00	+	17.74
051 Nylon Yarn	0.1719	95.24	95.24	95.24	+	0.00	+	0.00
052 Blended Yarn	0.1689	148.12	148.12	129.30	+	0.00	+	14.56
053 Woven Fabrics	0.0128	174.73	174.73	160.35	+	0.00	+	8.97
054 Cotton Fabrics	0.6343	184.10	184.10	169.71	+	0.00	+	8.48
055 Other Fabrics	1.1016	156.33	147.18	126.34	+	6.22	+	23.74
056 Silk & Rayon Fabrics	0.7350	199.72	193.09	168.08	+	3.43	+	18.82
057 Towels	0.1235	158.38	158.38	141.44	+	0.00	+	11.98
058 Blankets	0.0029	105.56	105.56	104.95	+	0.00	+	0.58
059 Bed Sheets	0.0913	133.90	133.90	127.88	+	0.00	+	4.71

## Annexure C: Wholesale Price Indices by Major Groups &amp; Commodities

(2015-16=100)

Item and Specification	Weight	Index Numbers			% Change in Jul 2022 over	
		Jul 22	Jun 22	Jul 21	Jun 2022	Jul 2021
060 Quilts	0.0019	131.51	131.51	121.31	+ 0.00	+ 8.41
061 Woolen Carpets	0.0383	146.63	146.63	137.01	+ 0.00	+ 7.02
062 Synthetic Carpets	0.0566	131.66	131.66	116.51	+ 0.00	+ 13.00
063 Hosiery Products	0.8832	159.49	149.40	137.31	+ 6.75	+ 16.15
064 Readymade Garments	1.0576	181.68	142.64	139.51	+ 27.37	+ 30.23
<b>Leather Products</b>	<b>0.7115</b>	<b>143.51</b>	<b>149.01</b>	<b>119.35</b>	- <b>3.69</b>	+ <b>20.24</b>
065 Leather Without Hair	0.2973	126.46	133.00	108.77	- 4.92	+ 16.26
066 Other Leather N.E.C	0.2567	119.76	127.45	111.77	- 6.03	+ 7.15
067 Footwear	0.1575	214.40	214.40	151.69	+ 0.00	+ 41.34
<b>Other Transportable Goods</b>	<b>22.3979</b>	<b>322.51</b>	<b>306.76</b>	<b>173.26</b>	+ <b>5.13</b>	+ <b>86.14</b>
068 Timber	0.0165	185.19	168.65	155.92	+ 9.81	+ 18.77
069 Printing Paper	0.4279	130.70	130.70	130.70	+ 0.00	+ 0.00
070 Hard Board	0.1579	146.50	146.50	146.50	+ 0.00	+ 0.00
071 Motor Spirit	1.6268	342.32	316.62	163.77	+ 8.12	+ <u>109.0</u>
072 Diesel Oil	5.4849	389.82	358.08	163.41	+ 8.86	+ <u>138.5</u>
073 Kerosene Oil	0.2151	419.08	385.74	169.54	+ 8.64	+ <u>147.1</u>
074 Furnace Oil	3.2664	643.12	656.58	331.64	- 2.05	+ <u>93.92</u>
075 Mobil Oil	0.7114	168.46	157.47	131.01	+ 6.98	+ 28.59
076 Chemicals	1.7720	261.95	255.67	148.37	+ 2.46	+ <u>76.55</u>
077 Dyeing Material	0.1539	146.16	146.16	146.16	+ 0.00	+ 0.00
078 Fertilizers	2.8657	206.96	167.03	112.97	+ 23.91	+ <u>83.20</u>
079 Pesticides	0.2763	153.09	153.09	142.90	+ 0.00	+ 7.13
080 Insecticides	0.1276	111.49	111.49	111.49	+ 0.00	+ 0.00
081 Paints & Varnishes	0.1916	189.86	168.25	141.16	+ 12.84	+ 34.50
082 Medicines	1.1428	172.41	172.07	150.06	+ 0.20	+ 14.89
083 Soaps & Detergents	0.8168	145.27	144.54	117.55	+ 0.51	+ 23.58
084 Auto Tyres	0.2703	169.32	169.13	126.22	+ 0.11	+ 34.15
085 Plastic Products	0.4550	127.95	127.11	119.91	+ 0.66	+ 6.71
086 Glass sheets	0.2089	226.78	190.90	148.06	+ 18.80	+ <u>53.17</u>
087 Other Glass Articles	0.1635	158.06	158.06	150.08	+ 0.00	+ 5.32
088 Ceramics & Sanitary Fixture	0.0244	142.21	140.49	127.62	+ 1.22	+ 11.43
089 Bricks, Blocks & Tiles	0.1566	158.15	151.62	135.17	+ 4.31	+ 17.00
090 Cement	1.8145	204.16	191.26	131.27	+ 6.74	+ <u>55.53</u>
091 Bed Foam	0.0006	247.14	250.09	157.23	- 1.18	+ <u>57.18</u>
092 Matches	0.0505	1415.5	1363.6	1173.3	+ 3.81	+ 20.65
<b>Metal Product, Machinery &amp; Eq</b>	<b>8.7156</b>	<b>213.23</b>	<b>209.74</b>	<b>166.42</b>	+ <b>1.66</b>	+ <b>28.13</b>
093 Steel Bar & Sheets	1.4615	300.47	288.92	217.01	+ 4.00	+ 38.46
094 Pipe Fittings	0.0780	231.07	231.07	174.45	+ 0.00	+ 32.46
095 Steel Products	0.3879	141.48	141.22	134.30	+ 0.18	+ 5.35
096 Engines & Motors	0.0046	117.67	117.67	107.29	+ 0.00	+ 9.67
097 Vacuum Pumps	0.0155	107.56	107.56	107.56	+ 0.00	+ 0.00
098 Air Conditioners	0.0049	185.90	185.90	128.74	+ 0.00	+ 44.40
099 Cultivators	0.0551	174.49	174.49	103.75	+ 0.00	+ <u>68.18</u>
100 Chuff Cutter	0.1293	304.69	278.51	121.43	+ 9.40	+ <u>150.9</u>
101 Tractors	0.0028	185.77	169.16	135.63	+ 9.82	+ <u>36.97</u>
102 Lathe Machines	0.0525	334.37	334.37	232.65	+ 0.00	+ 43.72
103 Concrete Mixture	0.0107	223.42	223.42	100.00	+ 0.00	+ <u>123.4</u>
104 Fridge, WashM, SewM, Fans, Iron	1.1645	180.65	180.36	163.01	+ 0.16	+ 10.82
105 Electric Wires	0.0912	179.20	175.32	144.65	+ 2.21	+ 23.89
106 Lighting Equipments	1.4431	183.89	178.30	131.51	+ 3.14	+ 39.83
107 Radio & Television	0.1843	122.36	121.60	108.07	+ 0.63	+ 13.22
108 Motor Vehicles	0.0244	190.09	190.09	156.48	+ 0.00	+ 21.48
109 Motorcycles	0.2570	180.78	176.41	137.77	+ 2.48	+ 31.22
110 Bicycles	3.3483	211.48	211.48	172.55	+ 0.00	+ 22.56