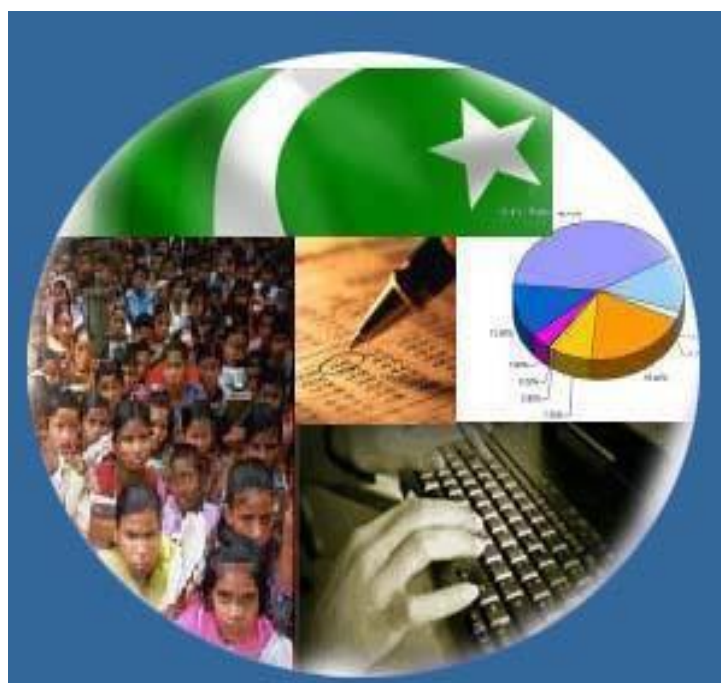




Monthly Review on Price Indices



December, 2022
(Base Year 2015-16)

Government of Pakistan
Ministry of Planning, Development & Special Initiatives
Pakistan Bureau of Statistics
Islamabad

PRICE STATISTICS TEAM

S#	Name	Designation
1.	Dr. Naeem Uz Zafar	Chief Statistician
2.	Syed Ejaz Wasti	Member (National Accounts/Prices)
3.	Dr. Bahrawar Jan	Deputy Director General
4.	Mr. Naseer Ahmad	Director
5.	Dr. Ahtasham Gul	Chief Statistical Officer
6.	Mr. Tauseef ul Hai Khan	Assistant Census Commissioner
7.	Mr. Adnan Shams	Statistical Officer
8.	Mr. Muhammad Mazhar	Statistical Officer
9.	Mr. Shahzad	Statistical Officer
10.	Mr. Umer Farooq	Statistical Assistant
11.	Mr. Ansar Mahmood	Statistical Assistant
12.	Mrs. Madiha Gulfraz	Statistical Assistant
13.	Mrs. Humail Fatima	Statistical Assistant

IT & SOFTWARE TEAM

1.	Mrs. Sobia Munawar	Director (DP)
2.	Mr. Muhammad Ehtesham	Director (DP)
3.	Mr. Arsalan Bashir	Data Processing Officer
4.	Mr. Muhammad Kibria	Data Processing Officer
5.	Mr. Muhammad Irfan Bajwa	Data Processing Assistant

Inflation in Brief

- CPI inflation General**, increased to 24.5% on year-on-year basis in Dec 2022 as compared to an increase of 23.8% in the previous month and 12.3% in Dec 2021. On month-on-month basis, it increased to 0.5% in Dec 2022 as compared to an increase of 0.8% in the previous month and with no change in Dec 2021.
- CPI inflation Urban**, increased to 21.6% on year-on-year basis in Dec 2022 as compared to an increase of 21.6% in the previous month and 12.7% in Dec 2021. On month-on-month basis, it increased to 0.3% in Dec 2022 as compared to an increase of 0.4% in the previous month and an increase of 0.3% in Dec 2021.
- CPI inflation Rural**, increased to 28.8% on year-on-year basis in Dec 2022 as compared to an increase of 27.2% in the previous month and 11.6% in Dec 2021. On month-on-month basis, it increased to 0.7% in Dec 2022 as compared to an increase of 1.3% in the previous month and a decrease of 0.5% in Dec 2021.
- SPI inflation** on YoY increased to 27.8% in Dec 2022 as compared to an increase of 27.1% a month earlier and an increase of 20.9% in Dec 2021. On MoM basis, it increased by 0.2% in Dec 2022 as compared to an increase of 6.1% a month earlier and a decrease of 0.4% in Dec 2021.
- WPI inflation** on YoY basis increased to 27.1% in Dec 2022 as compared to an increase of 27.7% a month earlier and an increase of 26.2% in Dec 2021. On MoM basis, it decreased by 0.7% in Dec 2022 with no change a month earlier and a decrease of 0.2% in corresponding month i.e. Dec 2021.
- Figures 1 and 2 show graphically the yearly data of Table 1.a for Urban and Rural CPI while Table 1.1 shows "Period Average" and "YoY" percent changes in indices of three years.

Table 1.a General Inflation (%) (Base 2015-16)																		
PERIOD	CPI														SPI**		WPI	
	General						Food				Non-Food							
	National		Urban		Rural		Urban		Rural		Urban		Rural		YoY	MoM	YoY	MoM
	YoY	MoM	YoY	MoM	YoY	MoM	YoY	MoM	YoY	MoM	YoY	MoM	YoY	MoM				
Mar-21	9.1	0.4	8.7	0.3	9.5	0.5	11.5	1.7	11.1	1.5	7.1	-0.6	8.1	-0.4	18.7	5.7	14.6	3.7
Apr-21	11.1	1.0	11.0	1.3	11.3	0.6	15.7	2.7	14.1	0.9	8.2	0.5	8.9	0.3	21.3	0.4	16.6	-0.4
May-21	10.9	0.1	10.8	0.2	10.9	-0.03	15.3	1.1	12.8	0.2	8.3	-0.3	9.2	-0.3	19.7	0.8	19.4	0.3
Jun-21	9.7	-0.3	9.6	-0.4	9.7	-0.1	11.0	-1.9	9.8	-0.8	8.8	0.5	9.7	0.6	17.6	-0.4	20.9	0.9
Jul-21	8.4	1.3	8.7	1.3	8.0	1.4	9.4	1.5	7.3	1.6	8.2	1.1	8.7	1.2	16.2	1.8	17.3	2.3
Aug-21	8.4	0.6	8.3	0.5	8.4	0.7	10.2	0.5	9.1	0.8	7.2	0.5	7.7	0.6	15.9	0.7	17.1	1.2
Sep-21	9.0	2.1	9.1	2.0	8.8	2.3	10.8	3.6	9.1	3.7	8.1	1.1	8.5	1.0	16.6	2.7	19.6	3.2
Oct-21	9.2	1.9	9.6	1.7	8.7	2.2	9.4	1.5	7.2	2.6	9.7	1.8	10.0	1.9	15.2	2.1	21.2	4.2
Nov-21	11.5	3.0	12.0	2.9	10.9	3.1	11.9	3.9	8.6	3.3	12.0	2.2	13.0	3.0	18.1	3.6	27.0	3.8
Dec-21	12.3	0.0	12.7	0.3	11.6	-0.5	11.7	-2.3	9.0	-3.1	13.4	2.0	14.0	1.9	20.9	-0.4	26.2	-0.2
Jan-22	13.0	0.4	13.0	0.1	12.9	0.9	13.3	-0.8	11.8	0.4	12.8	0.6	13.9	1.4	20.9	-0.8	24.0	0.6
Feb-22	12.2	1.2	11.5	0.9	13.3	1.5	14.3	2.2	14.6	2.6	9.9	0.2	12.2	0.4	18.7	1.3	23.6	1.9
Mar-22	12.7	0.8	11.9	0.7	13.9	1.0	14.5	1.8	15.5	2.3	10.4	-0.1	12.5	-0.2	13.0	0.6	23.8	3.9
Apr-22	13.4	1.6	12.2	1.6	15.1	1.6	15.6	3.7	17.7	2.8	10.2	0.3	12.8	0.5	14.2	1.5	28.1	3.2
May-22	13.8	0.4	12.4	0.3	15.9	0.6	15.5	1.0	19.0	1.3	10.4	-0.1	13.1	0.0	14.1	0.6	29.6	1.4
Jun-22	21.3	6.3	19.8	6.2	23.6	6.6	24.0	5.3	27.0	6.0	17.3	6.8	20.4	7.1	21.7	6.2	38.9	8.2
Jul-22	24.9	4.3	23.6	4.5	26.9	4.2	27.4	4.3	29.6	3.7	21.3	4.6	24.5	4.6	28.2	7.3	38.5	2.0
Aug-22	27.3	2.4	26.2	2.6	28.8	2.2	28.8	1.6	30.2	1.2	24.7	3.3	27.5	3.1	34.0	5.2	41.2	3.1
Sep-22	23.2	-1.2	21.2	-2.1	26.1	0.2	30.8	5.2	32.7	5.7	15.2	-6.6	20.1	-4.9	28.6	-1.4	38.9	1.4
Oct-22	26.6	4.7	24.6	4.5	29.5	5.0	34.7	4.5	37.2	6.1	18.2	4.5	22.4	3.9	24.0	-1.5	32.6	-0.5
Nov-22	23.8	0.8	21.6	0.4	27.2	1.3	29.7	0.0	33.5	0.5	16.4	0.6	21.4	2.1	27.1	6.1	27.7	0.0
Dec-22	24.5	0.5	21.6	0.3	28.8	0.7	32.7	0.0	37.9	0.1	14.8	0.6	20.7	1.4	27.8	0.2	27.1	-0.7

** SPI for quintile 1. Digits 0.0* are due to rounding off.

Core inflation (NFNE)

7. Measured by **non-food non-energy Urban** increased to 14.7% on (YoY) basis in Dec 2022 as compared to an increase of 14.6% in the previous month and 8.3% in Dec, 2021. On (MoM) basis, it increased by 1.2% in Dec, 2022 as compared to an increase of 0.8% in previous month, and an increase of 1.1% in corresponding month of last year i.e. Dec, 2021.
8. Measured by **non-food non-energy Rural** increased to 19.0% on (YoY) basis in Dec, 2022 as compared to an increase of 18.5% in the previous month and 8.9% in Dec, 2021. On (MoM) basis, it increased by 1.5% in Dec, 2022 as compared to an increase of 2.1% in previous month, and an increase of 1.1% in corresponding month of last year i.e. Dec, 2021.

Core inflation (Trimmed)

9. Measured by 20% **weighted trimmed mean Urban** increased to 19.4% on (YoY) basis in Dec, 2022 as compared to 19.8% in the previous month and 10.8% in Dec, 2021. On (MoM) basis, it increased by 0.8% in Dec, 2022 as compared to an increase of 0.5% in the previous month and an increase of 1.1% in corresponding month of last year i.e. Dec, 2021.
10. Measured by 20% **weighted trimmed mean Rural** increased to 26.4% on (YoY) basis in Dec, 2022 as compared to 25.4% in the previous month and by 10.3% in Dec, 2021. On (MoM) basis, it increased to 1.5% in Dec, 2022 as compared to an increase of 1.8% in the previous month and an increase of 1.0% in corresponding month of last year i.e. Dec, 2021.

Table 1.b Core Inflation (%) (Base 2015-16)

Period	NFNE				Trimmed			
	Urban		Rural		Urban		Rural	
	YoY	MoM	YoY	MoM	YoY	MoM	YoY	MoM
Dec-21	8.3	1.1	8.9	1.1	10.8	1.1	10.3	1.0
Jan-22	8.2	0.8	9.0	1.2	10.6	0.5	10.9	1.1
Feb-22	7.8	0.8	9.4	0.9	9.8	0.8	11.3	1.2
Mar-22	8.9	1.2	10.3	1.1	10.5	0.8	11.7	0.8
Apr-22	9.1	1.1	10.9	1.2	10.5	0.9	12.8	0.9
May-22	9.7	0.7	11.5	0.9	10.7	0.8	14.1	1.4
Jun-22	11.5	2.0	13.6	2.3	16.7	3.5	19.1	4.3
Jul-22	12.0	1.2	14.6	1.6	19.1	2.7	21.7	2.7
Aug-22	13.8	1.8	16.5	1.8	21.4	1.7	23.8	1.8
Sep-22	14.4	0.9	17.6	1.4	19.5	1.6	24.4	2.5
Oct-22	14.9	1.3	18.2	1.5	22.0	1.9	26.7	2.7
Nov-22	14.6	0.8	18.5	2.1	19.8	0.5	25.4	1.8
Dec-22	14.7	1.2	19.0	1.5	19.4	0.8	26.4	1.5

Table 1.1 Period Average and Y-o-Y % Change

INDEX	Average July - December % changes			November over December % changes		
	2022-2023	2021-2022	2020-2021	2022-2023	2021-2022	2020-2021
CPI (National)	25.02	9.81	8.63	24.47	12.28	7.97
CPI (Urban)	23.09	10.09	7.31	21.59	12.74	6.97
CPI (Rural)	27.89	9.41	10.63	28.76	11.61	9.49
SPI	28.21	17.17	11.48	27.79	20.86	9.07
WPI	34.10	21.46	4.44	27.11	26.24	5.67

Figure 1: Urban Inflation - YoY, Special Indices

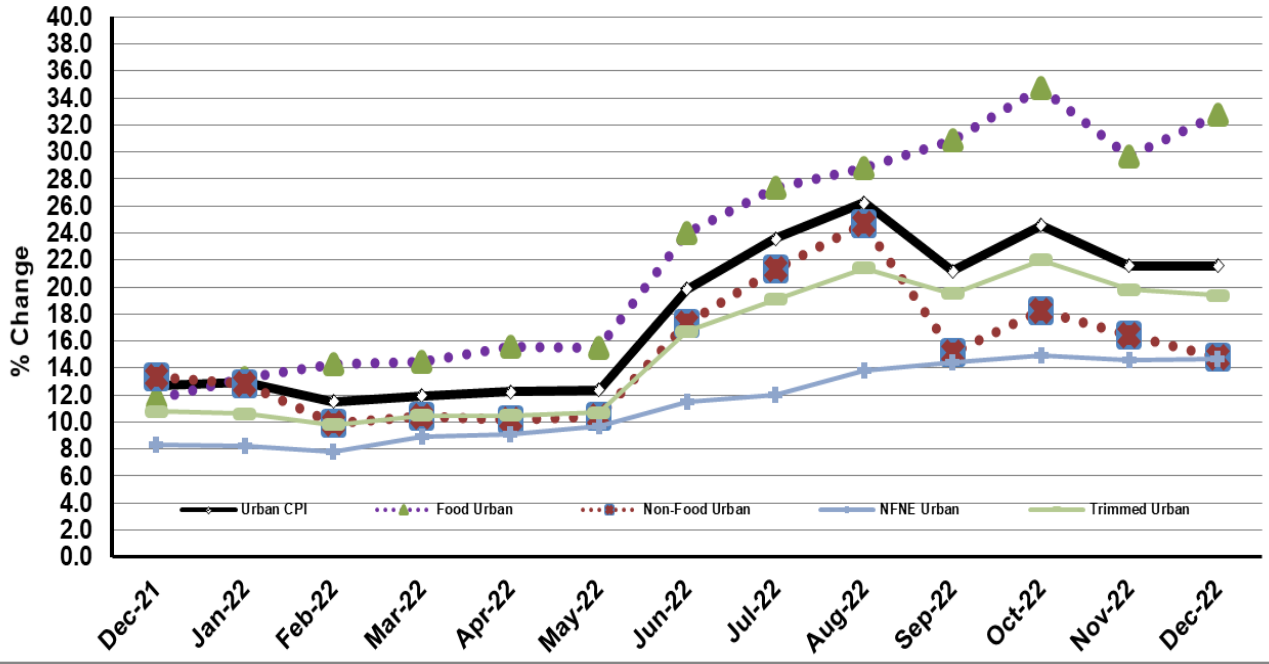


Figure 2: Rural Inflation - YoY, Special Indices

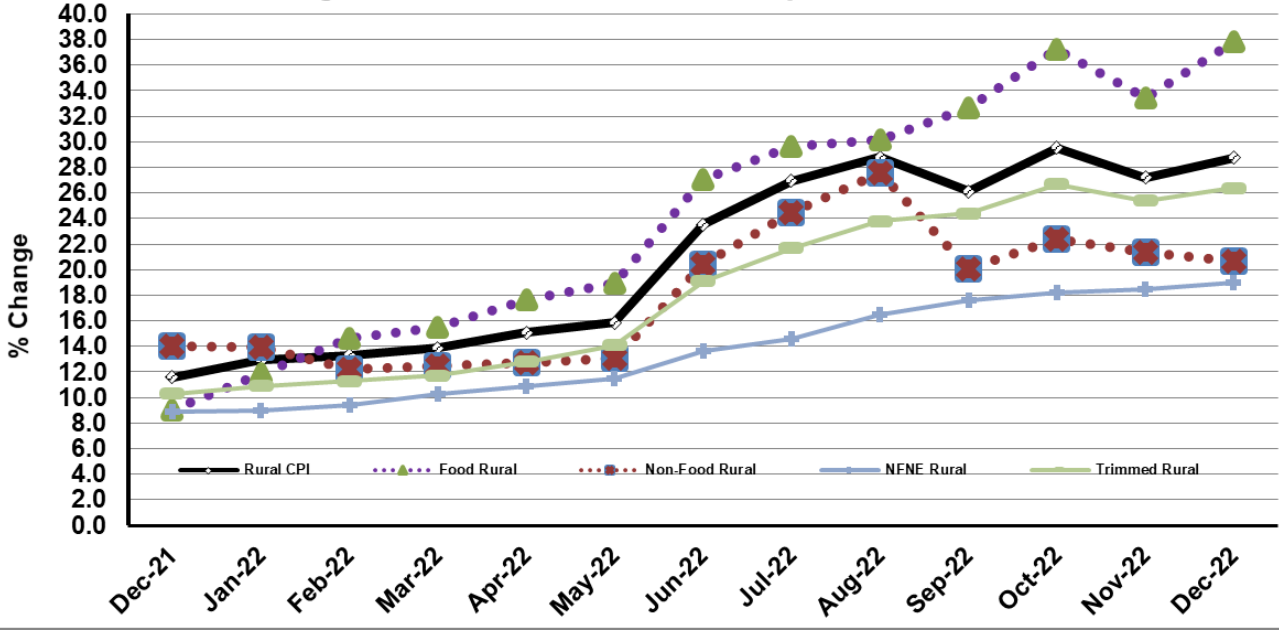


Figure 3: Urban Inflation - MoM, Special Indices

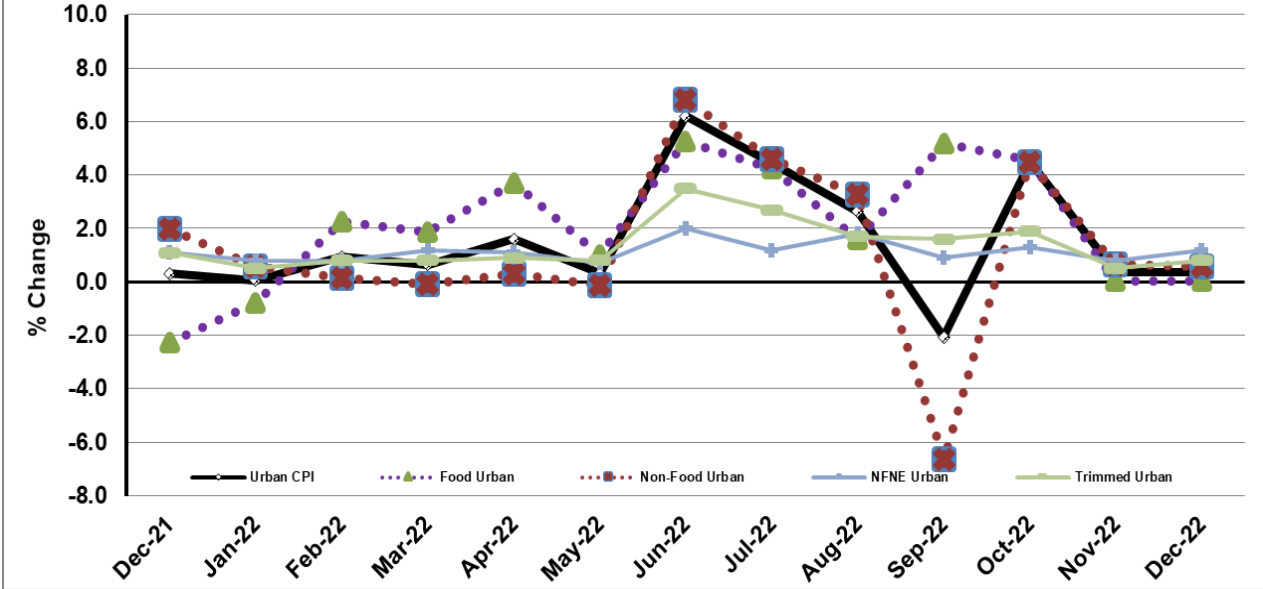


Figure 4: Rural Inflation - MoM, Special Indices

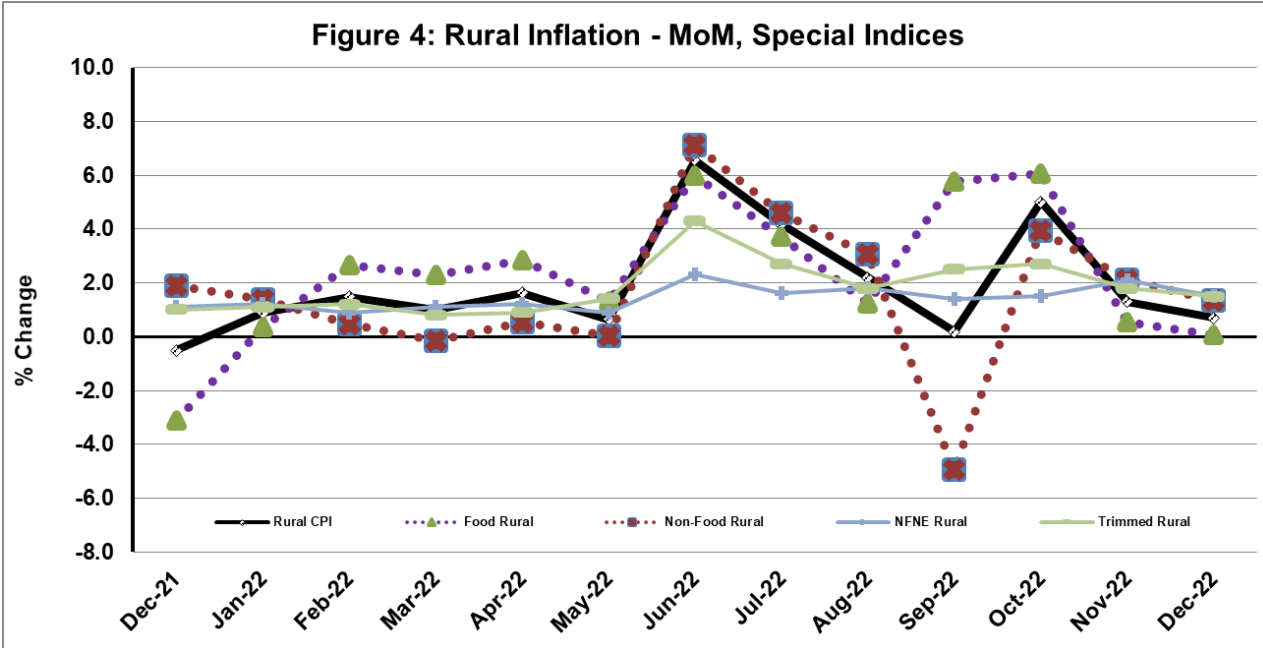


Figure 5: CPI YoY (National, Urban, Rural)

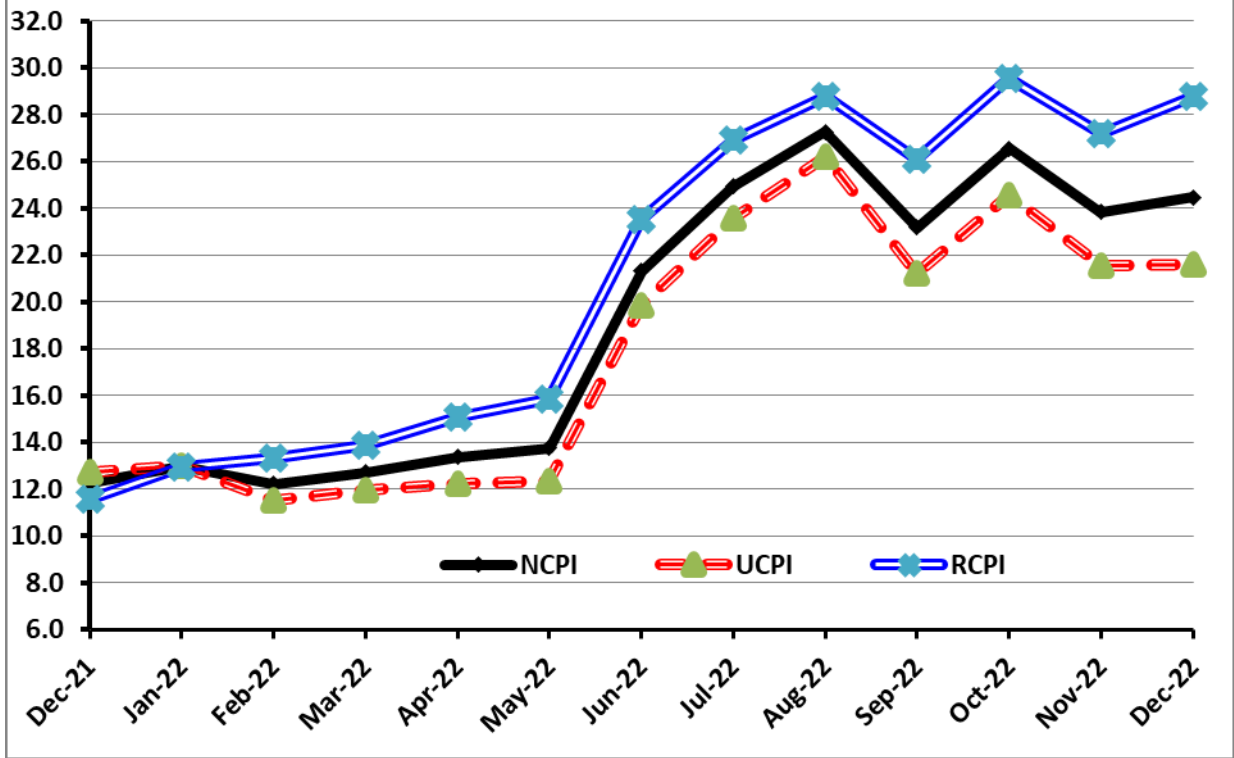
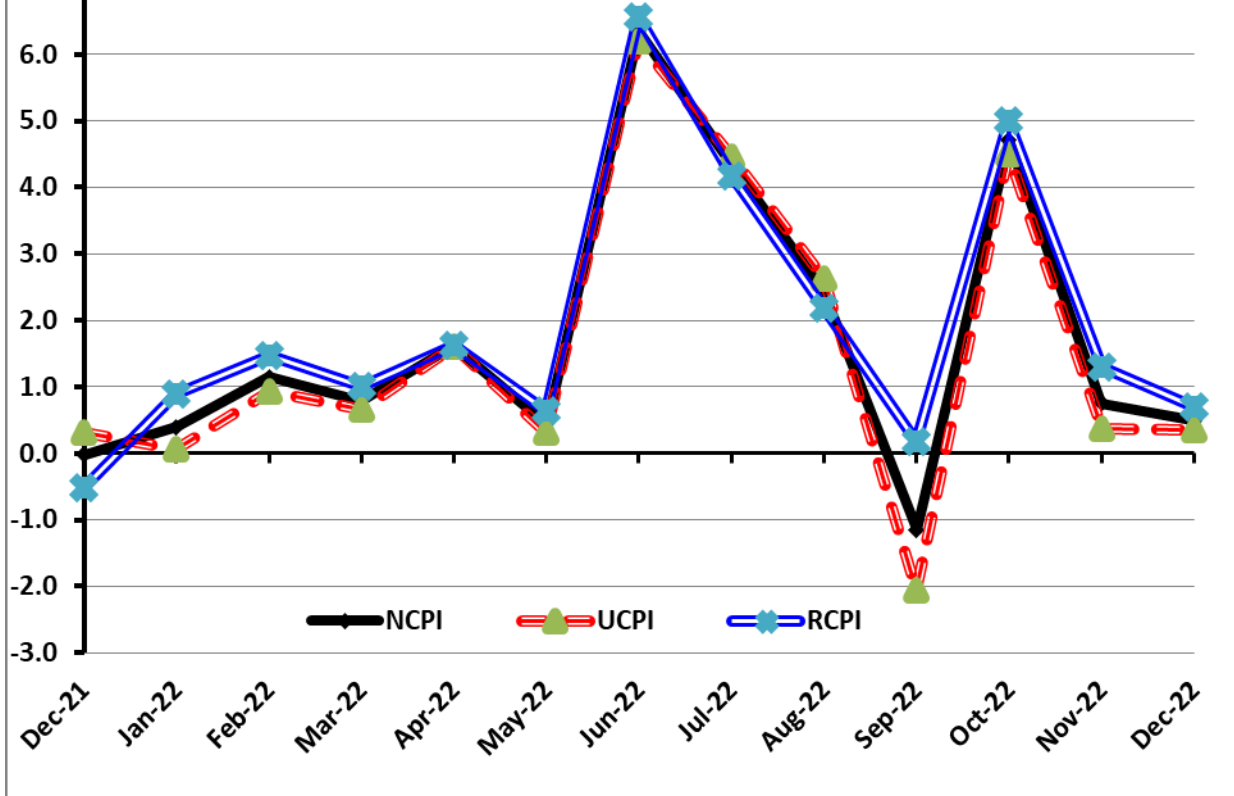


Figure 6: CPI MoM (National, Urban, Rural)



I. National Consumer Price Index (N-CPI)

The **National Consumer Price Index** for **December 2022** is increased to 0.49% over **November 2022** and increased to 24.47% over corresponding month of the last year i.e. **December 2021**.

Table 1: Consumer Price Index (National) by Group of Commodities and Services (Base 2015-16)

No	Group	Group Weight (%)	Indices			% Change Dec 2022 Over		Impact (In % points) Dec 2022 Over	
			Dec 22	Nov22	Dec 21	Nov 22	Dec 21	Nov 22	Dec 21
	General	100.00	196.86	195.89	158.16	0.49	24.47	0.49	24.47
1.	Food & Non-alcoholic Bev.	34.58	220.82	221.14	162.96	-0.14	35.50	-0.06	12.65
	<i>Non-perishable Food Items</i>	29.60	219.92	214.82	165.99	2.38	32.49	0.77	10.09
	<i>Perishable Food Items</i>	4.99	226.12	258.67	145.01	-12.58	55.93	-0.83	2.56
2.	Alcoholic Bev. & Tobacco	1.02	199.49	198.46	146.48	0.52	36.19	0.01	0.34
3.	Clothing & Footwear	8.60	183.62	182.32	156.81	0.71	17.10	0.06	1.46
4.	Housing, Water, Electricity, Gas & Fuels	23.63	167.51	167.48	156.63	0.02	6.95	0.00	1.63
5.	Furnishing & Household Equipment Maintenance	4.10	196.45	191.84	152.01	2.40	29.23	0.10	1.15
6.	Health	2.79	189.63	186.02	161.46	1.94	17.45	0.05	0.50
7.	Transport	5.91	243.28	245.27	172.34	-0.81	41.16	-0.06	2.65
8.	Communication	2.21	111.96	111.89	110.11	0.06	1.68	0.00	0.03
9.	Recreation & Culture	1.59	185.02	166.80	133.60	10.93	38.49	0.15	0.52
10.	Education	3.79	163.89	163.45	147.76	0.27	10.92	0.01	0.39
11.	Restaurants & Hotels	6.92	199.03	196.51	156.27	1.29	27.37	0.09	1.87
12.	Miscellaneous	4.87	204.99	199.01	162.99	3.00	25.77	0.15	1.29

II. Urban Consumer Price Index (UCPI)

The Urban Consumer Price Index for **December 2022** is increased to 0.35% over **November 2022** and increased to 21.59% over corresponding month of the last year i.e. **December 2021**.

Table 2: Consumer Price Index (Urban) by Group of Commodities and Services (Base 2015-16)

No	Group	Group Weight (%)	Indices			% Change Dec 2022 Over		Impact (In % points) Dec 2022 Over	
			Dec 22	Nov 22	Dec 21	Nov 22	Dec 21	Nov 22	Dec 21
	General	100.00	191.46	190.80	157.46	0.35	21.59	0.35	21.59
1.	Food & Non-alcoholic Bev.	30.42	215.98	216.54	162.85	-0.26	32.63	-0.09	10.27
	<i>Non-perishable Food Items</i>	25.97	215.05	210.53	165.94	2.15	29.60	0.62	8.10
	<i>Perishable Food Items</i>	4.46	221.40	251.57	144.84	-11.99	52.86	-0.70	2.17
2.	Alcoholic Bev. & Tobacco	0.85	213.06	212.67	155.24	0.18	37.25	0.00	0.31
3.	Clothing & Footwear	8.01	180.13	178.94	153.96	0.67	17.00	0.05	1.33
4.	Housing, Water, Electricity, Gas & Fuels	27.03	162.56	163.42	156.18	-0.53	4.09	-0.12	1.10
5.	Furnishing & Household Equip. & Maintenance	4.09	194.05	189.70	149.61	2.29	29.70	0.09	1.16
6.	Health	2.31	183.92	182.00	162.05	1.05	13.50	0.02	0.32
7.	Transport	6.14	243.22	245.03	174.72	-0.74	39.21	-0.06	2.67
8.	Communication	2.35	114.49	114.40	112.43	0.08	1.83	0.00	0.03
9.	Recreation & Culture	1.73	180.24	158.91	130.62	13.42	37.99	0.19	0.55
10.	Education	4.88	166.24	165.87	150.01	0.22	10.82	0.01	0.50
11.	Restaurants & Hotels	7.41	200.18	196.97	155.66	1.63	28.60	0.12	2.09
12.	Miscellaneous	4.77	203.20	198.51	161.40	2.36	25.90	0.12	1.27

Main contributors to month-on-month and year-on-year percentage changes are given below and detail is given in **Annexure-A**.

1. MONTH-ON-MONTH Top few commodities which varied from previous month are given below:

FOOD

Increased: Fresh Fruits (13.36%), Onions (9.99%), Eggs (9.71%), Wheat (9.45%), Dry Fruits (8.84%), Rice (5.85%), Chicken (5.43%), Beans (3.81%), Wheat Flour (3.66%), Sugar (3.12%), Milk Fresh (1.51%) and Pulse Moong (0.32%).

Decreased: Tomatoes (53.96%), Fresh Vegetables (24.89%), Potatoes (21.33%), Besan (3.23%), Pulse Masoor (2.41%), Pulse Gram (2.14%), Vegetable Ghee (2.03%), Gram Whole (1.9%), Cooking Oil (1.39%), Gur (0.31%) and Pulse Mash (0.26%).

NON-FOOD

Increased: Solid Fuel (6.63%), Washing Soap/Detergents/Match Box (5.11%), Woolen Readymade Garments (3.06%), Woolen Cloth (2.03%), Stationery (1.91%), Marriage Hall Charges (1.68%) and Construction Input Items (1.51%).

Decreased: Electricity Charges (3.34%) and Motor Fuel (1.82%).

YEAR-ON-YEAR: Top few commodities which varied from corresponding month of previous year i.e. Oct, 2021 are given below:

Increased: Onions (414.98%), Tea (63.81%), Wheat (57.26%), Eggs (54.38%), Gram Whole (53.18%), Rice (46.61%), Besan (46.41%), Pulse Gram (45.2%), Chicken (43.76%), Pulse Moong (42.82%), Mustard Oil (41.48%), Wheat Flour (40.58%), Pulse Mash (38.28%), Cooking Oil (31.97%), Vegetable Ghee (30.07%), Milk Fresh (26%), Potatoes (24.72%), Dry Fruits (36.25%), Fresh Fruits (33.94%) and Pulse Masoor (24.61%).

Decreased: Condiments & Spices (8.05%) and Gur (2.68%).

NON-FOOD

Increased: Motor Fuel (49.45%), Washing Soap/Detergents/Match Box (46.65%), Stationery (46.56%), Construction Input Items (30.59%), Motor Vehicle Accessories (29.36%), Solid Fuel (28.62%), Woolen Readymade Garments (24.12%), Household Servant (20.46%) and Construction Wage Rates (13.7%).

Decreased: Electricity Charges (2.69%).

III. Rural Consumer Price Index (RCPI)

The Rural Consumer Price Index for December 2022 is increased to 0.70% over November 2022 and increased to 28.76% over corresponding month of the last year i.e. December 2021.

Table 3: Consumer Price Index (Rural) by Group of Commodities and Services (Base 2015-16)

No	Group	Group Weight (%)	Indices			% Change Dec 2022 Over		Impact (In % points) Dec 2022 Over	
			Dec 22	Nov 22	Dec 21	Nov 22	Dec 21	Nov 22	Dec 21
	General	100.00	205.00	203.57	159.21	0.70	28.76	0.70	28.76
1.	Food & Non-alcoholic Bev.	40.87	226.26	226.31	163.09	-0.02	38.73	-0.01	16.21
	<i>Non-perishable Food Items</i>	<i>35.08</i>	<i>225.37</i>	<i>219.61</i>	<i>166.04</i>	<i>2.62</i>	<i>35.73</i>	<i>0.99</i>	<i>13.07</i>
	<i>Perishable Food Items</i>	<i>5.79</i>	<i>231.60</i>	<i>266.91</i>	<i>145.21</i>	<i>-13.23</i>	<i>59.49</i>	<i>-1.00</i>	<i>3.14</i>
2.	Alcoholic Bev. & Tobacco	1.28	185.80	184.13	137.65	0.91	34.98	0.01	0.39
3.	Clothing & Footwear	9.48	188.07	186.63	160.44	0.77	17.22	0.07	1.65
4.	Housing, Water, Electricity, Gas & Fuels	18.49	178.43	176.43	157.61	1.13	13.21	0.18	2.42
5.	Furnishing & Household Equip. & Maintenance	4.10	200.06	195.05	155.63	2.57	28.55	0.10	1.15
6.	Health	3.51	195.30	190.01	160.88	2.78	21.39	0.09	0.76
7.	Transport	5.56	243.38	245.68	168.37	-0.94	44.55	-0.06	2.62
8.	Communication	1.99	107.45	107.43	105.97	0.02	1.40	0.00	0.02
9.	Recreation & Culture	1.38	194.09	181.76	139.24	6.78	39.39	0.08	0.47
10.	Education	2.13	155.76	155.10	139.98	0.43	11.27	0.01	0.21
11.	Restaurants & Hotels	6.19	196.96	195.67	157.36	0.66	25.17	0.04	1.54
12.	Miscellaneous	5.02	207.55	199.72	165.27	3.92	25.58	0.19	1.33

Main contributors to Month-on-Month and Year-on-Year percentage changes are given below and detail is given in **Annexure-B**.

1. MONTH-ON-MONTH Top few commodities which varied from previous month are given below:

FOOD

Increased: Onions(18.06%), Eggs(13.68%), Wheat(8.97%), Dry Fruits(8.15%), Fresh Fruits(6.68%), Rice(6.62%), Sugar(4.82%), Wheat Flour(3.26%), Fish(2.93%), Chicken(1.71%), and Fresh Milk(0.88%).

Decreased: Tomatoes (52.15%), Fresh Vegetables(26.22%), Potatoes(21.17%), Pulse Gram(3.83%), Besan (2.28%), Pulse Masoor (1.99%), Gram Whole(1.62%), Vegetable Ghee(1.45%), Pulse Moong(0.74%), Pulse Mash(0.38%) and Cooking Oil(0.17%).

Non-Food:

Increased: Solid Fuel(6.36%), Washing Soaps, Detergents and Match Box(4.13%), Woolen Readymade Garments(3.7%), Household Textiles(3.44%), Stationery(1.52%), Construction Wage Rates(1.39%) and Liquefied Hydrocarbons(1.18%).

Decreased: Electricity Charges (3.34%), Motor Fuels(1.99%) and Construction Input Items(0.13%).

YEAR-ON-YEAR: Top few commodities which varied from corresponding month of previous year i.e. Dec 2021 are given below:

FOOD

Increased: Onions (463.5%), Gram Whole (61.24%), Wheat (58.62%), Tea (58.09%), Eggs (57.78%), Pulse Gram (54.34%), Besan (54.08%), Rice (48.86%), Pulse Mash (44.33%), Pulse Moong (43.27%), Chicken (41.35%), Mustard Oil (41.19%), Dry Fruits (39.84%), Cooking Oil (35.22%), Cigarettes (34.96%), Vegetable Ghee (33.89%), Milk Fresh (29.75%), Tomatoes (21.73%), Meat (21.61%), Fish (18.47%), Potatoes (15.34%), Sugar (3.84%) and Gur (0.33%).

NON-FOOD

Increased: Motor Fuels (51.66%), Transport Services (51.17%), Washing Soaps, Detergents and Match Box (37.90%), Stationery (37.8%), Solid Fuel (37.66%), Drugs and Medicines (33.64%), Construction Input Items (33.05%), Motor Vehicles Accessories (29.60%), Woolen Readymade Garments (18.63%) and Construction Wage Rates (11.85%),

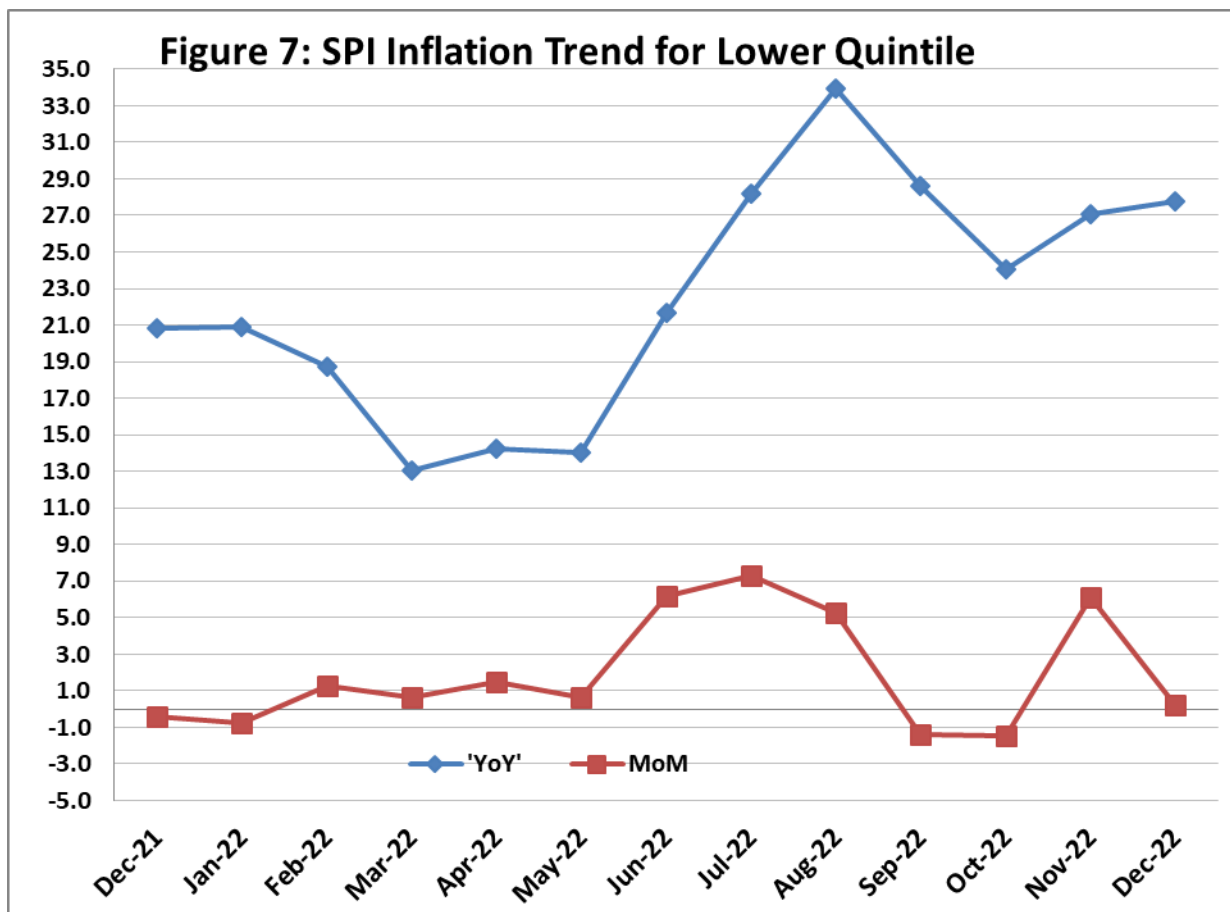
Decreased: Electricity Charges (2.69%).

IV. Sensitive Price Indicator

Quintile-wise percentage changes YoY and MoM are given below in Table 4. The series from December 2021 to December 2022 is also graphed below in Figure 7.

Table 4: Sensitive Price Indicator (Base 2015-16)					
Quintiles	Indices			% Change Dec 2022 Over	
	Dec 22	Nov 22	Dec 21	Nov 22	Dec 21
1	225.95	225.61	176.81	0.15	27.79
2	215.67	215.25	167.72	0.20	28.59
3	219.26	218.61	168.43	0.30	30.18
4	215.66	214.85	164.34	0.38	31.23
5	219.92	219.25	169.07	0.31	30.08
Combined	217.59	216.92	167.79	0.31	29.68

Table 4.1 : Weekly Percentage Change of SPI During Dec - 2022					
Quintiles	% Change with Previous week				
	01-12-2022	08-12-2022	15-12-2022	22-12-2022	29-12-2022
Quintile 1	-0.34	0.00	-0.77	-0.04	-0.07
Combined	-0.16	0.00	-0.4	-0.11	-0.09



V. Wholesale Price Index

The Wholesale Price Index for **December, 2022** decreased by 0.71% over **November, 2022**. It increased to 27.11% over the corresponding month of the last year i.e. Dec, 2021. YoY and MoM movements, from December, 2021 to December, 2022 are also graphed below in Figure 8.

Table 5: Wholesale Price Index by Group of Commodities (Base 2015-16)

No	Group	Group Weight (%)	Indices			% Change Dec 2022 Over		Impact (In % points) Dec 2022 Over	
			Dec 22	Nov 22	Dec 21	Nov 22	Dec 21	Nov 22	Dec 21
	General	100.00	240.36	242.09	189.09	-0.71	27.11	-0.71	27.11
1	Agriculture Forestry & Fishery	25.77	229.05	225.99	189.92	1.35	20.60	0.33	5.33
2	Ores/Minerals, Elec., Gas & Water	12.01	216.66	219.41	194.94	-1.25	11.14	-0.14	1.38
3	Food, Beverages, Tobacco, Textiles & Leather Products	31.11	214.56	212.87	176.19	0.79	21.78	0.22	6.31
	i. Food Products, Beverages & Tobacco	20.07	216.58	214.19	168.85	1.12	28.27	0.20	5.07
	ii. Textiles & Apparels	10.33	214.43	213.98	193.88	0.21	10.60	0.02	1.12
	iii. Leather Products	0.71	159.57	159.57	126.23	0.00	26.41	0.00	0.13
4	Other Transportable Goods	22.40	279.70	292.07	206.13	-4.24	35.69	-1.14	8.71
5	Metal Product, Machinery & Equipment	8.72	297.46	296.80	180.93	0.22	64.41	0.02	5.37

Main contributors to month-on-month and year-on-year percentage changes are given below and detail is given in **Annexure-C**.

1. **MONTH-ON-MONTH:** Top few commodities which varied from previous month are given below:

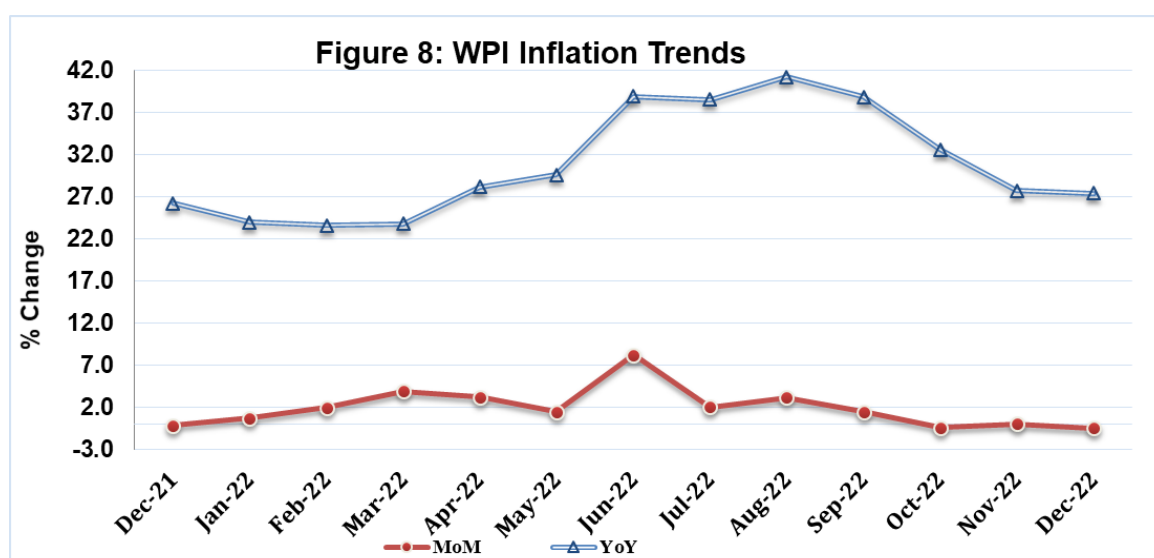
Increased: Fresh Fruits (21.05%), Wheat (12.54%), Dried Fruits & Nuts (10.54%), Poultry (9.2%), Dry Fruits (8.95%), Fuel Wood in Logs (8.51%), Eggs (8.46%), Rice (7.93%), Sorghum / Jowar (7.2%), Vegetables & Fruit Juice (6.5%), Wheat Flour (6.32%), Sugar Refined (4.8%), Hosiery Products (4.44%), Maize (4.21%), Milk & Cream in Solid Form (3.88%), Millet / Bajra (3.86%), Paints & Varnishes (3.74%), Cotton Seeds (3.48%), Cement (3.46%) and Glass sheets (3.11%).

Decreased: Edible Roots / Potatoes (26.15%), Vegetables (13.2%), Kerosine Oil (7.82%), Furnace Oil (7.14%), Sugar Crops (6.21%), Diesel Oil (4.68%), Concrete Mixture (4.57%), Bed Sheets (4.52%), Vegetable Ghee (4.25%), Other Cereal Flour (3.77%), Electrical Energy (2.53%), Fertilizers (2.52%), Motor Spirit (2.3%) and Chemicals (1.48%).

YEAR-ON-YEAR: Top few commodities which varied from previous year are given below:

Increased: Lighting Equipments (381.19%), Coal not Agglomerated (79.42%), Glass sheets (62.99%), Vegetables (62.17%), Wheat (61.08%), Diesel Oil (60.46%), Eggs (58.84%), Kerosine Oil (56.44%), Dried Fruits & Nuts (55.55%), Motor Spirit (53.74%), Dry Fruits (51.61%), Maize (47.77%), Coffee & Tea (46.6%), Air Conditioners (46.18%), Wheat Flour (46.12%) and Pulses (45.74%).

Decreased: Spices (36.01%) and Fibre Crops (2.14%).



Annexure A:CPI (Urban) Index Numbers by Commodity Groups & Commodities (2015-16=100)

Item and Specification	Weight	Index Numbers			% Change in Dec 2022 over			
		Dec 22	Nov 22	Dec 21	Nov 2022	Dec 2021		
General	100.0000	191.46	190.80	157.46	+	0.35	+	21.59
Food and non-alcoholic Bevera	30.4215	215.98	216.54	162.85	-	0.26	+	32.63
01 Wheat	0.6120	281.61	257.30	179.07	+	9.45	+	<u>57.26</u>
02 Wheat flour	3.0075	225.45	217.48	160.37	+	3.66	+	40.58
03 Wheat products	0.0936	233.24	228.88	170.40	+	1.90	+	36.88
04 Besan	0.0830	192.22	198.64	131.29	-	3.23	+	46.41
05 Rice	1.1804	223.02	210.69	152.12	+	5.85	+	46.61
06 Bakery and confectionary	0.4770	214.99	212.43	161.51	+	1.21	+	33.11
07 Nimco	0.1224	226.18	224.38	163.59	+	0.80	+	38.26
08 Meat	2.0411	228.87	228.34	187.55	+	0.23	+	22.03
09 Chicken	1.3631	203.78	193.28	141.75	+	5.43	+	43.76
10 Fish	0.3855	144.28	143.06	119.87	+	0.85	+	20.36
11 Milk fresh	7.1070	193.72	190.84	153.75	+	1.51	+	26.00
12 Milk products	0.6407	195.12	192.62	157.39	+	1.30	+	23.97
13 Milk powder	0.3106	191.46	188.51	143.67	+	1.56	+	33.26
14 Eggs	0.5083	318.63	290.44	206.39	+	9.71	+	<u>54.38</u>
15 Butter	0.0932	302.62	301.94	206.36	+	0.23	+	46.65
16 Mustard oil	0.0120	301.52	300.22	213.12	+	0.43	+	41.48
17 Cooking oil	1.1016	308.05	312.38	233.42	-	1.39	+	31.97
18 Vegetable ghee	1.0324	312.55	319.04	240.29	-	2.03	+	30.07
19 Dry fruits	0.3299	205.07	188.42	150.51	+	8.84	+	36.25
20 Fresh fruits	1.4363	179.23	158.10	133.81	+	13.36	+	33.94
21 Pulse masoor	0.1624	172.30	176.56	138.27	-	2.41	+	24.61
22 Pulse moong	0.1697	155.79	155.30	109.08	+	0.32	+	42.82
23 Pulse mash	0.1152	158.59	159.00	114.69	-	0.26	+	38.28
24 Pulse gram	0.1660	188.89	193.02	130.09	-	2.14	+	45.20
25 Gram whole	0.0912	226.29	230.67	147.73	-	1.90	+	<u>53.18</u>
26 Beans	0.0408	221.54	213.41	179.31	+	3.81	+	23.55
27 Potatoes	0.4496	245.17	311.64	196.57	-	21.33	+	24.72
28 Onions	0.5928	478.88	435.40	92.99	+	9.99	+	<u>414.98</u>
29 Tomatoes	0.3459	198.33	430.75	172.94	-	<u>53.96</u>	+	14.68
30 Fresh vegetables	1.5306	158.52	211.04	148.15	-	24.89	+	7.00
31 Sugar	1.1130	151.24	146.66	147.76	+	3.12	+	2.36
32 Gur	0.0379	158.03	158.52	162.39	-	0.31	-	2.68
33 Honey	0.1017	167.14	166.11	151.26	+	0.62	+	10.50
34 Sweetmeat	0.3535	218.69	217.92	180.22	+	0.35	+	21.35
35 Ice cream	0.1044	171.80	171.80	146.93	+	0.00	+	16.93
36 Condiments and Spices	1.3340	191.55	187.52	208.31	+	2.15	-	8.05
37 Dessert preparation	0.0419	197.31	186.73	133.41	+	5.67	+	47.90
38 Tea	0.8427	250.30	247.38	152.80	+	1.18	+	<u>63.81</u>
39 Beverages	0.8906	163.66	160.01	135.42	+	2.28	+	20.85
Alcoholic Beverages, Tobacco	0.8540	213.06	212.67	155.24	+	0.18	+	37.25
40 Cigarettes	0.7167	194.04	193.73	141.09	+	0.16	+	37.53
41 Pan prepared	0.1373	312.34	311.54	229.08	+	0.26	+	36.35
Clothing and footwear	8.0096	180.13	178.94	153.96	+	0.67	+	17.00
42 Cotton cloth	2.2227	189.97	189.00	156.54	+	0.51	+	21.36
43 Woolen cloth	0.8361	177.98	174.44	148.70	+	2.03	+	19.69
44 Readymade garments	1.3196	166.58	166.13	144.88	+	0.27	+	14.98
45 Woolen readymade garments	0.4307	185.50	180.00	149.45	+	3.06	+	24.12
46 Tailoring	1.0741	182.15	181.39	155.10	+	0.42	+	17.44
47 Hosiery	0.4070	169.37	168.45	148.02	+	0.55	+	14.42
48 Dopatta	0.1713	152.57	151.31	131.81	+	0.83	+	15.75
49 Cleaning and laundering	0.0665	209.85	209.23	176.42	+	0.30	+	18.95
50 Footwear	1.4816	180.41	180.41	164.83	+	0.00	+	9.45
Housing, water, Elec., Gas an	27.0332	162.56	163.42	156.18	-	0.53	+	4.09
51 House rent	19.2558	149.54	149.54	142.06	+	0.00	+	5.27
52 Construction input items	0.3765	215.81	212.59	165.26	+	1.51	+	30.59
53 Construction wage rates	0.2025	188.10	185.82	165.44	+	1.23	+	13.70
54 Water supply	0.5269	171.56	171.56	163.00	+	0.00	+	5.25
55 Garbage collection	0.1064	207.65	207.57	179.94	+	0.04	+	15.40
56 Electricity charges	4.5562	186.17	192.60	191.32	-	3.34	-	2.69
57 Gas charges	1.0807	216.94	216.94	216.94	+	0.00	+	0.00
58 Liquified Hydrocarbons	0.5064	258.74	258.48	247.74	+	0.10	+	4.44
59 Solid Fuel	0.4218	165.16	154.89	128.41	+	6.63	+	28.62

Annexure A:CPI (Urban) Index Numbers by Commodity Groups & Commodities (2015-16=100)

Item and Specification	Weight	Index Numbers			% Change in Dec 2022 over			
		Dec 22	Nov 22	Dec 21	Nov 2022	Dec 2021		
<i>Furnishing and household equi</i>	4.0937	194.05	189.70	149.61	+	2.29	+	29.70
60 Furniture and furnishing	0.4750	182.82	181.23	148.91	+	0.88	+	22.77
61 Carpets	0.0308	131.78	131.62	121.31	+	0.12	+	8.63
62 Household textiles	0.3420	160.06	158.69	139.57	+	0.86	+	14.68
63 Household equipments	1.0032	183.32	182.62	152.32	+	0.38	+	20.35
64 Plastic products	0.0536	161.78	160.98	133.03	+	0.50	+	21.61
65 Major tools & equipments	0.0084	174.60	174.41	147.86	+	0.11	+	18.08
66 Washing soap/detergents/match	1.4112	231.34	220.10	157.75	+	5.11	+	46.65
67 Household servant	0.7695	166.66	166.65	138.35	+	0.01	+	20.46
<i>Health</i>	2.3098	183.92	182.00	162.05	+	1.05	+	13.50
68 Drugs and medicines	1.0735	188.95	185.64	163.73	+	1.78	+	15.40
69 Therapeutic Appliances and Eq	0.0054	127.06	126.97	119.84	+	0.07	+	6.02
70 Doctor (MBBS) clinic fee	0.4044	232.94	232.48	202.10	+	0.20	+	15.26
71 Dental services	0.0156	148.34	146.92	130.59	+	0.97	+	13.59
72 Medical tests	0.2367	159.82	157.30	137.30	+	1.60	+	16.40
73 Hospitals services	0.5742	151.42	151.29	142.18	+	0.09	+	6.50
<i>Transport</i>	6.1368	243.22	245.03	174.72	-	0.74	+	39.21
74 Motor vehicles	0.8097	208.82	208.62	163.80	+	0.10	+	27.48
75 Motor vehicle accessories	0.1941	202.17	201.64	156.28	+	0.26	+	29.36
76 Motor fuel	2.9088	302.09	307.69	202.14	-	1.82	+	49.45
77 Mechanical services	0.4290	176.37	175.94	147.77	+	0.24	+	19.35
78 Motor vehicle tax	0.0482	148.53	148.53	136.37	+	0.00	+	8.92
79 Transport services	1.7470	184.73	182.00	143.85	+	1.50	+	28.42
<i>Communication</i>	2.3536	114.49	114.40	112.43	+	0.08	+	1.83
80 Postal services	0.0190	186.05	185.94	163.41	+	0.06	+	13.85
81 Communication apparatus	0.4524	136.25	135.80	128.86	+	0.33	+	5.73
82 Communication Services	1.8822	108.53	108.53	107.97	+	0.00	+	0.52
<i>Recreation and culture</i>	1.7301	180.24	158.91	130.62	+	13.42	+	37.99
83 Recreation and culture	0.6478	131.77	130.23	117.36	+	1.18	+	12.28
84 Text books	0.6655	213.39	161.51	134.04	+	32.12	+	59.20
85 Newspapers	0.0716	157.93	157.93	151.55	+	0.00	+	4.21
86 stationery	0.3452	211.90	207.93	144.58	+	1.91	+	46.56
<i>Education</i>	4.8807	166.24	165.87	150.01	+	0.22	+	10.82
87 Education	4.8807	166.24	165.87	150.01	+	0.22	+	10.82
<i>Restaurants and hotels</i>	7.4050	200.18	196.97	155.66	+	1.63	+	28.60
88 Readymade food	5.5235	208.15	204.81	156.96	+	1.63	+	32.61
89 Marriage Hall Charges	1.7514	180.51	177.52	154.31	+	1.68	+	16.98
90 Accommodation Services	0.1301	126.49	126.05	118.71	+	0.35	+	6.55
<i>Misc. goods and services</i>	4.7720	203.20	198.51	161.40	+	2.36	+	25.90
91 Personal Grooming Services	0.8001	186.99	185.80	144.86	+	0.64	+	29.08
92 Electrical Appliances for Per	0.0465	144.36	143.67	130.12	+	0.48	+	10.94
93 Appliances/Articles/Products	2.9807	189.12	185.91	150.40	+	1.73	+	25.74
94 Personal Effects n.e.c.	0.9447	264.28	251.72	211.64	+	4.99	+	24.87

Annexure B:CPI (Rural) Index Numbers by Commodity Groups & Commodities (2015-16=100)

Item and Specification	Weight	Index Numbers			% Change in Dec 2022 over	
		Dec 22	Nov 22	Dec 21	Nov 2022	Dec 2021
General	100.0000	205.00	203.57	159.21	+ 0.70	+ 28.76
Food and non-alcoholic Bevera	40.8668	226.26	226.31	163.09	- 0.02	+ 38.73
01 Wheat	3.4736	283.98	260.61	179.03	+ 8.97	+ <u>58.62</u>
02 Wheat Flour	3.4297	230.13	222.87	166.43	+ 3.26	+ 38.27
03 Wheat Products	0.1068	227.06	223.07	163.12	+ 1.79	+ 39.20
04 Besan	0.0728	209.06	213.94	135.68	- 2.28	+ <u>54.08</u>
05 Rice	1.5501	286.11	268.34	192.20	+ 6.62	+ 48.86
06 Bakery and Confectionary	0.3702	223.20	218.97	157.89	+ 1.93	+ 41.36
07 Nimco	0.0774	223.23	222.08	143.72	+ 0.52	+ <u>55.32</u>
08 Meat	1.7146	227.60	226.47	187.16	+ 0.50	+ 21.61
09 Chicken	1.4641	208.99	205.47	147.85	+ 1.71	+ 41.35
10 Fish	0.2640	157.84	153.35	133.23	+ 2.93	+ 18.47
11 Milk fresh	10.3803	188.24	186.60	145.08	+ 0.88	+ 29.75
12 Milk products	0.9624	179.66	179.05	142.10	+ 0.34	+ 26.43
13 Milk powder	0.1062	170.00	167.77	131.99	+ 1.33	+ 28.80
14 Eggs	0.5665	315.19	277.26	199.77	+ 13.68	+ <u>57.78</u>
15 Butter	0.3333	198.90	195.96	158.36	+ 1.50	+ 25.60
16 Mustard oil	0.0136	311.26	308.34	220.46	+ 0.95	+ 41.19
17 Cooking oil	0.6011	343.33	343.91	253.91	- 0.17	+ 35.22
18 Vegetable ghee	2.3764	345.82	350.90	258.29	- 1.45	+ 33.89
19 Dry fruits	0.2496	235.87	218.09	168.67	+ 8.15	+ 39.84
20 Fresh fruits	1.4505	177.01	165.93	130.27	+ 6.68	+ 35.88
21 Pulse Masoor	0.2076	194.12	198.07	142.08	- 1.99	+ 36.63
22 Pulse Moong	0.2510	163.69	164.91	114.25	- 0.74	+ 43.27
23 Pulse Mash	0.1465	161.33	161.94	111.78	- 0.38	+ 44.33
24 Pulse Gram	0.2751	196.63	204.46	127.40	- 3.83	+ <u>54.34</u>
25 Gram Whole	0.1116	237.92	241.85	147.56	- 1.62	+ <u>61.24</u>
26 Beans	0.0896	239.44	236.47	188.20	+ 1.26	+ 27.23
27 Potatoes	0.7437	254.49	322.83	220.64	- 21.17	+ 15.34
28 Onions	0.8965	482.69	408.85	85.66	+ 18.06	+ <u>463.50</u>
29 Tomatoes	0.5069	211.90	442.80	174.07	- <u>52.15</u>	+ 21.73
30 Fresh Vegetables	2.0947	159.46	216.14	143.94	- 26.22	+ 10.78
31 Sugar	2.0296	153.78	146.71	148.10	+ 4.82	+ 3.84
32 Gur	0.1522	157.77	155.82	157.25	+ 1.25	+ 0.33
33 Honey	0.0296	169.04	168.19	155.72	+ 0.51	+ 8.55
34 Sweetmeat	0.3967	208.66	204.44	156.53	+ 2.06	+ 33.30
35 Ice Cream	0.0568	161.27	161.27	142.84	+ 0.00	+ 12.90
36 Condiments and Spices	1.4919	214.51	212.01	161.83	+ 1.18	+ 32.55
37 Dessert Preparation	0.0133	180.31	175.17	134.01	+ 2.93	+ 34.55
38 Tea	1.2566	237.51	230.57	150.24	+ 3.01	+ <u>58.09</u>
39 Beverages	0.5537	158.07	156.39	139.14	+ 1.07	+ 13.61
Alcoholic Beverages, Tobacco	1.2786	185.80	184.13	137.65	+ 0.91	+ 34.98
40 Cigarettes	1.2364	183.46	181.73	135.94	+ 0.95	+ 34.96
41 Pan Prepared	0.0422	254.47	254.47	187.85	+ 0.00	+ 35.46
Clothing and footwear	9.4826	188.07	186.63	160.44	+ 0.77	+ 17.22
42 Cotton Cloth	2.8381	201.65	201.60	174.71	+ 0.02	+ 15.42
43 Woolen Cloth	1.0959	182.47	181.26	154.10	+ 0.67	+ 18.41
44 Readymade Garments	1.1345	178.96	178.05	153.39	+ 0.51	+ 16.67
45 Woolen Readymade Garments	0.5401	190.09	183.31	160.24	+ 3.70	+ 18.63
46 Tailoring	1.2999	184.80	184.16	156.08	+ 0.35	+ 18.40
47 Hosiery	0.4322	245.09	240.97	202.31	+ 1.71	+ 21.15
48 Dopatta	0.2078	172.10	171.26	150.25	+ 0.49	+ 14.54
49 Cleaning and Laundering	0.0176	196.66	195.39	158.80	+ 0.65	+ 23.84
50 Footwear	1.9165	166.99	164.54	141.78	+ 1.49	+ 17.78
Housing, water, Elec., Gas an	18.4853	178.43	176.43	157.61	+ 1.13	+ 13.21
51 House Rent	8.6110	150.40	150.40	142.07	+ 0.00	+ 5.86
52 Construction Input Items	0.6306	194.04	194.29	145.84	- 0.13	+ 33.05
53 Construction Wage Rates	0.2526	190.54	187.92	170.35	+ 1.39	+ 11.85
54 Water Supply	0.0645	222.06	222.06	218.49	+ 0.00	+ 1.63
55 Garbage Collection	0.0080	169.61	169.61	158.32	+ 0.00	+ 7.13
56 Electricity Charges	3.4431	186.17	192.60	191.32	- 3.34	- 2.69
57 Liquified Hydrocarbons	0.9994	242.97	240.13	203.23	+ 1.18	+ 19.55
58 Solid Fuel	4.4761	208.50	196.03	151.46	+ 6.36	+ 37.66

Annexure B:CPI (Rural) Index Numbers by Commodity Groups & Commodities (2015-16=100)

Item and Specification	Weight	Index Numbers			% Change in Dec 2022 over			
		Dec 22	Nov 22	Dec 21	Nov 2022	Dec 2021		
<i>Furnishing and household equi</i>	4.1031	200.06	195.05	155.63	+	2.57	+	28.55
59 Furniture and Furnishing	0.5786	188.98	187.85	158.41	+	0.60	+	19.30
60 Household Textiles	0.4382	180.27	174.27	146.73	+	3.44	+	22.86
61 Household Equipments	1.2774	196.92	194.70	160.34	+	1.14	+	22.81
62 Plastic Products	0.0776	203.66	202.83	164.80	+	0.41	+	23.58
63 Major Tools and Equipments	0.0324	180.01	174.96	136.48	+	2.89	+	31.89
64 Washing Soaps, Detergents and	1.6989	211.52	203.14	153.39	+	4.13	+	37.90
<i>Health</i>	3.5141	195.30	190.01	160.88	+	2.78	+	21.39
65 Drugs and Medicines	1.5792	219.08	207.56	163.93	+	5.55	+	33.64
66 Doctor Clinic Fee	0.5128	233.03	232.55	198.47	+	0.21	+	17.41
67 Dental Services	0.0181	167.48	167.15	139.88	+	0.20	+	19.73
68 Medical Tests	0.3967	176.75	176.40	157.02	+	0.20	+	12.57
69 Hospitals Services	1.0073	146.62	146.62	138.86	+	0.00	+	5.59
<i>Transport</i>	5.5580	243.38	245.68	168.37	-	0.94	+	44.55
70 Motor Vehicles	0.7305	164.02	164.00	142.59	+	0.01	+	15.03
71 Motor Vehicles Accessories	0.1572	202.16	202.03	155.99	+	0.06	+	29.60
72 Motor Fuels	2.4932	300.04	306.14	197.84	-	1.99	+	51.66
73 Mechanical Services	0.3645	182.65	182.65	158.60	+	0.00	+	15.16
74 Motor Vehicle Tax	0.0174	150.93	150.93	120.86	+	0.00	+	24.88
75 Transport Services	1.7952	213.83	212.48	141.45	+	0.64	+	51.17
<i>Communication</i>	1.9940	107.45	107.43	105.97	+	0.02	+	1.40
76 Postal Services	0.0070	149.43	149.43	149.43	+	0.00	+	0.00
77 Communication Apparatus	0.3362	130.46	130.35	122.46	+	0.08	+	6.53
78 Communication Services	1.6508	102.58	102.58	102.42	+	0.00	+	0.16
<i>Recreation and culture</i>	1.3764	194.09	181.76	139.24	+	6.78	+	39.39
79 Recreation and Culture	0.4763	190.05	188.47	142.27	+	0.84	+	33.58
80 Text Books	0.5047	188.29	158.47	126.09	+	18.82	+	49.33
81 Newspapers	0.0230	165.72	165.72	165.56	+	0.00	+	0.10
82 Stationery	0.3724	208.86	205.74	151.57	+	1.52	+	37.80
<i>Education</i>	2.1342	155.76	155.10	139.98	+	0.43	+	11.27
83 Education	2.1342	155.76	155.10	139.98	+	0.43	+	11.27
<i>Restaurants and hotels</i>	6.1895	196.96	195.67	157.36	+	0.66	+	25.17
84 Readymade Food	3.8001	218.62	216.76	168.67	+	0.86	+	29.61
85 Marriage Hall Charges	2.2525	165.77	165.38	141.66	+	0.24	+	17.02
86 Accommodation Services	0.1369	108.81	108.81	101.62	+	0.00	+	7.08
<i>Misc. goods and services</i>	5.0174	207.55	199.72	165.27	+	3.92	+	25.58
87 Personal Grooming Services	1.5363	222.53	215.41	170.96	+	3.31	+	30.16
88 Appliances/Articles/Products	2.2746	164.63	160.89	139.87	+	2.32	+	17.70
89 Personal Effects n.e.c.	1.2065	269.38	252.96	205.91	+	6.49	+	30.82

Annexure C: Wholesale Price Indices by Major Groups & Commodities

(2015-16=100)

Item and Specification	Weight	Index Numbers			% Change in Dec 2022 over	
		Dec 22	Nov 22	Dec 21	Nov 2022	Dec 2021
General	100.0000	240.36	242.09	189.09	- 0.71	+ 27.11
Agriculture Forestry & Fisher	25.7674	229.05	225.99	189.92	+ 1.35	+ 20.60
001 Wheat	0.6297	286.44	254.53	177.82	+ 12.54	+ 61.08
002 Maize	0.6764	243.88	234.03	165.04	+ 4.21	+ 47.77
003 Rice	2.4413	245.80	227.75	179.21	+ 7.93	+ 37.16
004 Sorghum / Jowar	0.0214	255.33	238.18	203.49	+ 7.20	+ 25.48
005 Millet / Bajra	0.0374	226.02	217.63	189.52	+ 3.86	+ 19.26
006 Vegetables	1.2441	275.43	317.30	169.84	- 13.20	+ 62.17
007 Fresh Fruits	1.5144	188.99	156.13	138.78	+ 21.05	+ 36.18
008 Dry Fruits	0.2478	217.19	199.35	143.26	+ 8.95	+ 51.61
009 Cotton Seeds	1.1511	163.85	158.34	145.41	+ 3.48	+ 12.68
010 Other Oil Seeds	0.0722	296.82	296.95	233.96	- 0.04	+ 26.87
011 Edible Roots / Potatoes	0.2540	293.81	397.86	224.43	- 26.15	+ 30.91
012 Stimulant & Spice Crops	0.1634	285.99	280.03	225.73	+ 2.13	+ 26.70
013 Pulses	0.4901	216.11	213.30	148.28	+ 1.32	+ 45.74
014 Sugar Crops	1.0725	175.00	186.59	157.96	- 6.21	+ 10.79
015 Fibre Crops	5.3169	312.91	312.91	319.75	+ 0.00	- 2.14
016 Unmanufactured Tobacco	0.0742	263.70	260.61	256.82	+ 1.19	+ 2.68
017 Poultry	0.5633	202.62	185.55	142.26	+ 9.20	+ 42.43
018 Raw Milk from Bovine Animals	7.0279	189.89	187.95	148.90	+ 1.03	+ 27.53
019 Eggs	0.5034	320.71	295.69	201.91	+ 8.46	+ 58.84
020 Raw Animal Materials / Wool	0.0351	110.86	110.52	108.11	+ 0.31	+ 2.54
021 Hides, Skins & Fur Skins, Raw	0.4834	45.89	45.67	33.13	+ 0.48	+ 38.51
022 Fuel Wood in Logs	0.0179	167.98	154.80	137.21	+ 8.51	+ 22.43
023 Fish Live Fresh or Chilled	1.7295	180.75	181.24	158.57	- 0.27	+ 13.99
Ores/Minerals, Elec., Gas & W	12.0069	216.66	219.41	194.94	- 1.25	+ 11.14
024 Coal not Agglomerated	0.7508	135.98	135.98	75.79	+ 0.00	+ 79.42
025 Natural Gas Liquified	5.7065	210.14	210.05	208.98	+ 0.04	+ 0.56
026 Salt & Pure Sodium Chloride	0.0584	207.63	207.31	170.18	+ 0.15	+ 22.01
027 Electrical Energy	5.4912	234.57	240.67	196.89	- 2.53	+ 19.14
Food, Beverages, Tobacco, Textil	31.1122	214.56	212.87	176.19	+ 0.79	+ 21.78
Food Products, Beverages &	20.0718	216.58	214.19	168.85	+ 1.12	+ 28.27
028 Meat of Animals	3.4559	220.41	220.41	190.89	+ 0.00	+ 15.46
029 Vegetables & Fruit Juice	0.0058	185.53	174.21	127.33	+ 6.50	+ 45.71
030 Dried Fruits & Nuts	0.1733	284.63	257.49	182.98	+ 10.54	+ 55.55
031 Fruit Juices	0.3880	171.46	167.18	132.53	+ 2.56	+ 29.37
032 Vegetable Oils Refined	1.9242	265.54	266.40	199.26	- 0.32	+ 33.26
033 Vegetable Ghee	1.5632	324.86	339.28	249.77	- 4.25	+ 30.06
034 Oil Cakes	0.9611	228.07	222.52	180.43	+ 2.49	+ 26.40
035 Processed Liquid Milk	4.4437	199.59	197.18	144.24	+ 1.22	+ 38.37
036 Milk & Cream in Solid Form	0.0316	191.60	184.45	137.67	+ 3.88	+ 39.17
037 Ice Cream	0.0047	167.02	167.02	148.21	+ 0.00	+ 12.69
038 Dairy Products N.E.C	0.0117	181.00	178.33	143.55	+ 1.50	+ 26.09
039 Wheat Flour	2.3034	243.06	228.61	166.34	+ 6.32	+ 46.12
040 Other Cereal Flour	0.0604	191.13	198.61	136.65	- 3.77	+ 39.87
041 Sugar Refined	1.7975	153.86	146.81	147.07	+ 4.80	+ 4.62
042 Chocolate	0.0139	96.68	96.68	89.55	+ 0.00	+ 7.96
043 Sugar Confectionary	0.0738	202.90	202.90	188.88	+ 0.00	+ 7.42
044 Coffee & Tea	0.7303	209.54	206.88	142.93	+ 1.29	+ 46.60
045 Spices	0.1449	214.50	214.22	335.20	+ 0.13	- 36.01
046 Other Food Products	0.0336	139.86	139.86	119.82	+ 0.00	+ 16.73
047 Mineral Water	0.0207	161.91	159.28	127.09	+ 1.65	+ 27.40
048 Beverages	0.6303	164.72	161.82	134.20	+ 1.79	+ 22.74
049 Tobacco Products	1.2998	134.10	134.10	104.23	+ 0.00	+ 28.66
Textiles & Apparels	10.3289	214.43	213.98	193.88	+ 0.21	+ 10.60
050 Cotton Yarn	5.2491	239.61	239.61	239.61	+ 0.00	+ 0.00
051 Nylon Yarn	0.1719	95.24	95.24	95.24	+ 0.00	+ 0.00
052 Blended Yarn	0.1689	148.12	148.12	148.12	+ 0.00	+ 0.00
053 Woven Fabrics	0.0128	185.47	185.47	170.33	+ 0.00	+ 8.89
054 Cotton Fabrics	0.6343	201.85	201.85	173.53	+ 0.00	+ 16.32
055 Other Fabrics	1.1016	176.06	176.04	126.80	+ 0.01	+ 38.85
056 Silk & Reyon Fabrics	0.7350	254.33	256.00	178.09	- 0.65	+ 42.81
057 Towels	0.1235	170.51	170.33	147.63	+ 0.11	+ 15.50
058 Blankets	0.0029	129.30	129.30	105.33	+ 0.00	+ 22.76

Annexure C: Wholesale Price Indices by Major Groups & Commodities

(2015-16=100)

Item and Specification	Weight	Index Numbers			% Change in Dec 2022 over		
		Dec 22	Nov 22	Dec 21	Nov 2022	Dec 2021	
059 Bed Sheets	0.0913	136.38	142.84	127.92	-	4.52	+ 6.61
060 Quilts	0.0019	171.16	171.16	122.33	+	0.00	+ 39.92
061 Woolen Carpets	0.0383	146.63	146.63	146.63	+	0.00	+ 0.00
062 Synthetic Carpets	0.0566	132.11	132.11	125.11	+	0.00	+ 5.60
063 Hosiery Products	0.8832	170.60	163.35	144.90	+	4.44	+ 17.74
064 Readymade Garments	1.0576	195.17	195.17	141.38	+	0.00	+ 38.05
Leather Products	0.7115	159.57	159.57	126.23	+	0.00	+ 26.41
065 Leather Without Hair	0.2973	140.15	140.15	119.80	+	0.00	+ 16.99
066 Other Leather N.E.C	0.2567	148.41	148.41	118.07	+	0.00	+ 25.70
067 Footwears	0.1575	214.40	214.40	151.69	+	0.00	+ 41.34
Other Transportable Goods	22.3979	279.70	292.07	206.13	-	4.24	+ 35.69
068 Timber	0.0165	191.64	191.64	163.17	+	0.00	+ 17.45
069 Printing Paper	0.4279	184.76	184.76	130.70	+	0.00	+ 41.36
070 Hard Board	0.1579	146.50	146.50	146.50	+	0.00	+ 0.00
071 Motor Spirit	1.6268	310.52	317.82	201.98	-	2.30	+ <u>53.74</u>
072 Diesel Oil	5.4849	333.67	350.07	207.94	-	4.68	+ <u>60.46</u>
073 Kerosine Oil	0.2151	346.79	376.21	221.67	-	7.82	+ <u>56.44</u>
074 Furnace Oil	3.2664	426.21	476.80	383.05	-	10.61	+ 11.27
075 Mobil Oil	0.7114	207.82	207.11	144.86	+	0.34	+ 43.46
076 Chemicals	1.7720	261.84	265.78	196.73	-	1.48	+ 33.10
077 Dyeing Material	0.1539	146.16	146.16	146.16	+	0.00	+ 0.00
078 Fertilizers	2.8657	194.43	199.46	141.39	-	2.52	+ 37.51
079 Pesticides	0.2763	155.30	155.30	146.51	+	0.00	+ 6.00
080 Insecticides	0.1276	111.49	111.49	111.49	+	0.00	+ 0.00
081 Paints & Varnishes	0.1916	208.39	200.88	154.17	+	3.74	+ 35.17
082 Medicines	1.1428	237.32	236.91	161.83	+	0.17	+ 46.65
083 Soaps & Detergents	0.8168	165.03	163.51	131.30	+	0.93	+ 25.69
084 Auto Tyres	0.2703	186.18	186.13	149.76	+	0.03	+ 24.32
085 Plastic Products	0.4550	134.54	134.54	125.15	+	0.00	+ 7.50
086 Glass sheets	0.2089	244.38	237.01	149.94	+	3.11	+ <u>62.99</u>
087 Other Glass Articles	0.1635	159.40	159.40	158.06	+	0.00	+ 0.85
088 Ceramics & Sanitary Fixture	0.0244	155.62	154.89	137.83	+	0.47	+ 12.91
089 Bricks, Blocks & Tiles	0.1566	165.98	165.88	146.59	+	0.06	+ 13.23
090 Cement	1.8145	204.47	197.64	148.67	+	3.46	+ 37.53
091 Bed Foam	0.0006	264.32	264.32	198.34	+	0.00	+ 33.27
092 Matches	0.0505	1448.23	1446.17	1198.44	+	0.14	+ 20.84
Metal Product, Machinery & Eq	8.7156	297.46	296.80	180.93	+	0.22	+ <u>64.41</u>
093 Steel Bar & Sheets	1.4615	275.34	275.00	259.36	+	0.12	+ 6.16
094 Pipe Fittings	0.0780	278.60	278.60	214.15	+	0.00	+ 30.10
095 Steel Products	0.3879	142.69	142.69	140.76	+	0.00	+ 1.37
096 Engines & Motors	0.0046	117.67	117.67	117.67	+	0.00	+ 0.00
097 Vacuum Pumps	0.0155	107.56	107.56	107.56	+	0.00	+ 0.00
098 Air Conditioners	0.0049	188.78	188.78	129.14	+	0.00	+ 46.18
099 Cultivators	0.0551	174.49	174.49	174.49	+	0.00	+ 0.00
100 Chuff Cutter	0.1293	361.84	361.84	128.57	+	0.00	+ <u>181.43</u>
101 Tractors	0.0028	206.24	206.24	146.62	+	0.00	+ 40.66
102 Lathe Machines	0.0525	364.02	364.02	270.02	+	0.00	+ 34.81
103 Concrete Mixture	0.0107	255.01	267.23	128.57	-	4.57	+ <u>98.34</u>
104 Fridge, WashM, SewM, Fans, Iron	1.1645	187.09	187.09	171.18	+	0.00	+ 9.29
105 Electric Wires	0.0912	193.49	193.49	148.23	+	0.00	+ 30.53
106 Lighting Equipments	1.4431	633.97	630.54	131.75	+	0.54	+ <u>381.19</u>
107 Radio & Television	0.1843	123.32	122.67	108.07	+	0.53	+ 14.11
108 Motor Vehicles	0.0244	208.83	208.83	166.28	+	0.00	+ 25.59
109 Motorcycles	0.2570	204.27	203.15	156.65	+	0.55	+ 30.40
110 Bicycles	3.3483	239.03	239.03	183.45	+	0.00	+ 30.30
