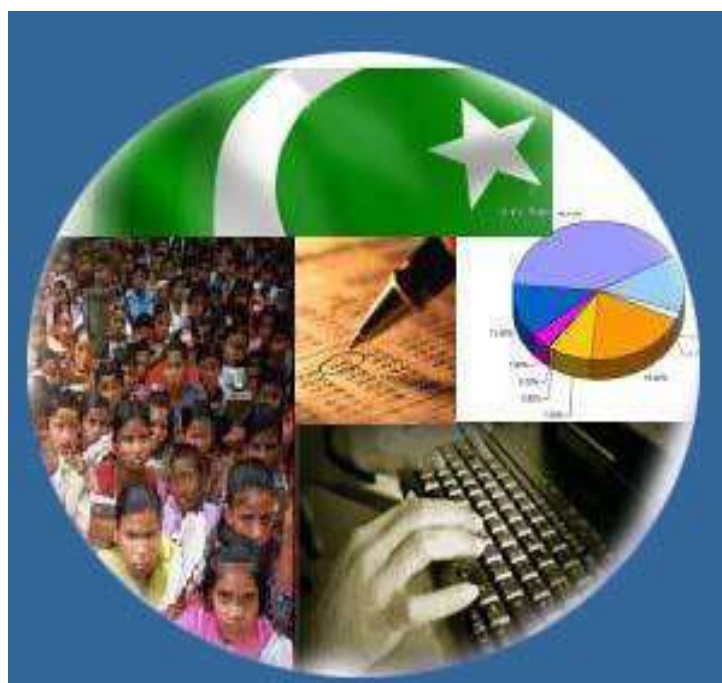




Monthly Review on Price Indices



August, 2022
(Base Year 2015-16)

Government of Pakistan
Ministry of Planning, Development & Special Initiatives
Pakistan Bureau of Statistics
Islamabad

PRICE STATISTICS TEAM

S#	Name	Designation
1.	Dr. Naeem Uz Zafar	Chief Statistician
2.	Syed Ejaz Wasti	Member (National Accounts/Prices)
3.	Dr. Bahrawar Jan	Deputy Director General
4.	Mr. Naseer Ahmad	Director
5.	Dr. Ahtasham Gul	Chief Statistical Officer
6.	Mr. Tauseef ul Hai Khan	Assistant Census Commissioner
7.	Mr. Adnan Shams	Statistical Officer
8.	Mr. Muhammad Mazhar	Statistical Officer
9.	Mr. Shahzad	Statistical Officer
7.	Mr. Umar Farooq	Statistical Assistant
8.	Mrs. Madiha Gulfraz	Statistical Assistant
9.	Mrs. Humail Fatima	Statistical Assistant
10	Sheikh Muhammad Umar Farooq	Statistical Assistant
11.	Mr. Ansar Mahmood	Statistical Assistant

IT & SOFTWARE TEAM

1.	Mrs. Sobia Munawar	Director (DP)
2.	Mr. Muhammad Ehtesham	Director (DP)
3.	Mr. Arsalan Bashir	Data Processing Officer
4.	Mr. Raja Aurangzeb	Data Processing Assistant
5.	Mr. Muhammad Kibria	Data Processing Assistant
6.	Mr. Muhammad Irfan Bajwa	Data Processing Assistant

Inflation in Brief

- CPI inflation General**, increased by 27.3% on year-on-year basis in Aug 2022 as compared to an increase of 24.9 in the previous month and 8.4% in Aug 2021. On month-on-month basis, it increased by 2.4% in Aug 2022 as compared to an increase of 4.3% in the previous month and an increase of 0.6% in Aug 2021.
- CPI inflation Urban**, increased by 26.2% on year-on-year basis in Aug 2022 as compared to an increase of 23.6% in the previous month and 8.3% in Aug 2021. On month-on-month basis, it increased by 2.6% in Aug 2022 as compared to an increase of 4.5% in the previous month and an increase of 0.5% in Aug 2021.
- CPI inflation Rural**, increased by 28.8% on year-on-year basis in Aug 2022 as compared to an increase of 26.9% in the previous month and 8.4% in Aug 2021. On month-on-month basis, it increased by 2.2% in Aug 2022 as compared to an increase of 4.2% in the previous month and an increase of 0.7% in Aug 2021.
- SPI inflation** on YoY increased by 34.0% in Aug 2022 as compared to an increase of 28.2% a month earlier and an increase of 15.9% in Aug 2021. On MoM basis, it increased by 5.2% in Aug 2022 as compared to increase of 7.3% a month earlier and an increase of 0.7% in Aug 2021.
- WPI inflation** on YoY basis increased by 41.2% in Aug 2022 as compared to an increase of 38.5% a month earlier and an increase of 17.1% in Aug 2021. WPI inflation on MoM basis increased by 3.1% in Aug 2022 as compared to an increase of 2.0% a month earlier and an increase of 1.2% in corresponding month i.e. Aug 2021.
- Figures 1 and 2 show graphically the yearly data of Table 1.a for Urban and Rural CPI while Table 1.1 shows "Period Average" and "YoY" percent changes in indices of three years.

Table 1.a General Inflation (%) (Base 2015-16)																		
PERIOD	CPI														SPI**		WPI	
	General						Food				Non-Food							
	National		Urban		Rural		Urban		Rural		Urban		Rural		YoY	MoM	YoY	MoM
	YoY	MoM	YoY	MoM	YoY	MoM	YoY	MoM	YoY	MoM	YoY	MoM	YoY	MoM				
Dec-20	8.0	-0.7	7.0	-0.3	9.5	-1.2	12.6	-2.1	13.4	-3.4	3.8	0.7	6.1	1.0	9.1	-2.7	5.7	0.3
Jan-21	5.7	-0.2	5.0	-0.2	6.6	-0.3	7.3	-2.1	7.2	-2.2	3.7	1.1	6.1	1.5	7.7	-0.8	6.4	2.5
Feb-21	8.7	1.8	8.6	2.3	8.8	1.1	10.3	1.3	9.1	0.2	7.6	2.8	8.6	2.0	11.9	3.1	9.5	2.2
Mar-21	9.1	0.4	8.7	0.3	9.5	0.5	11.5	1.7	11.1	1.5	7.1	-0.6	8.1	-0.4	18.7	5.7	14.6	3.7
Apr-21	11.1	1.0	11.0	1.3	11.3	0.6	15.7	2.7	14.1	0.9	8.2	0.5	8.9	0.3	21.3	0.4	16.6	-0.4
May-21	10.9	0.1	10.8	0.2	10.9	-0.03	15.3	1.1	12.8	0.2	8.3	-0.3	9.2	-0.3	19.7	0.8	19.4	0.3
Jun-21	9.7	-0.3	9.6	-0.4	9.7	-0.1	11.0	-1.9	9.8	-0.8	8.8	0.5	9.7	0.6	17.6	-0.4	20.9	0.9
Jul-21	8.4	1.3	8.7	1.3	8.0	1.4	9.4	1.5	7.3	1.6	8.2	1.1	8.7	1.2	16.2	1.8	17.3	2.3
Aug-21	8.4	0.6	8.3	0.5	8.4	0.7	10.2	0.5	9.1	0.8	7.2	0.5	7.7	0.6	15.9	0.7	17.1	1.2
Sep-21	9.0	2.1	9.1	2.0	8.8	2.3	10.8	3.6	9.1	3.7	8.1	1.1	8.5	1.0	16.6	2.7	19.6	3.2
Oct-21	9.2	1.9	9.6	1.7	8.7	2.2	9.4	1.5	7.2	2.6	9.7	1.8	10.0	1.9	15.2	2.1	21.2	4.2
Nov-21	11.5	3.0	12.0	2.9	10.9	3.1	11.9	3.9	8.6	3.3	12.0	2.2	13.0	3.0	18.1	3.6	27.0	3.8
Dec-21	12.3	-0.02	12.7	0.3	11.6	-0.5	11.7	-2.3	9.0	-3.1	13.4	2.0	14.0	1.9	20.9	-0.4	26.2	-0.2
Jan-22	13.0	0.4	13.0	0.1	12.9	0.9	13.3	-0.8	11.8	0.4	12.8	0.6	13.9	1.4	20.9	-0.8	24.0	0.6
Feb-22	12.2	1.2	11.5	0.9	13.3	1.5	14.3	2.2	14.6	2.6	9.9	0.2	12.2	0.4	18.7	1.3	23.6	1.9
Mar-22	12.7	0.8	11.9	0.7	13.9	1.0	14.5	1.8	15.5	2.3	10.4	-0.1	12.5	-0.2	13.0	0.6	23.8	3.9
Apr-22	13.4	1.6	12.2	1.6	15.1	1.6	15.6	3.7	17.7	2.8	10.2	0.3	12.8	0.5	14.2	1.5	28.1	3.2
May-22	13.8	0.4	12.4	0.3	15.9	0.6	15.5	1.0	19.0	1.3	10.4	-0.1	13.1	0.0	14.1	0.6	29.6	1.4
Jun-22	21.3	6.3	19.8	6.2	23.6	6.6	24.0	5.3	27.0	6.0	17.3	6.8	20.4	7.1	21.7	6.2	38.9	8.2
Jul-22	24.9	4.3	23.6	4.5	26.9	4.2	27.4	4.3	29.6	3.7	21.3	4.6	24.5	4.6	28.2	7.3	38.5	2.0
Aug-22	27.3	2.4	26.2	2.6	28.8	2.2	28.8	1.6	30.2	1.2	24.7	3.3	27.5	3.1	34.0	5.2	41.2	3.1

** SPI for quintile 1. Digits 0.0* are due to rounding off.

Core inflation (NFNE)

7. Measured by **non-food non-energy Urban** increased by 13.8% on (YoY) basis in Aug, 2022 as compared to an increase of 12.0% in the previous month and 6.3% in Aug, 2021. On (MoM) basis, it increased by 1.8% in Aug, 2022 as compared to an increase of 1.2% in previous month, and an increase of 0.2% in corresponding month of last year i.e. Aug, 2021.
8. Measured by **non-food non-energy Rural** increased by 16.5% on (YoY) basis in Aug, 2022 as compared to an increase of 14.6% in the previous month and 6.2% in Aug, 2021. On (MoM) basis, it increased by 1.8% in Aug, 2022 as compared to an increase of 1.6% in previous month, and an increase of 0.2% in corresponding month of last year i.e. Aug, 2021.

Core inflation (Trimmed)

9. Measured by 20% **weighted trimmed mean Urban** increased by 21.4% on (YoY) basis in Aug, 2022 as compared to 19.1% in the previous month and 7.8% in Aug, 2021. On (MoM) basis, it increased by 1.7% in Aug, 2022 as compared to an increase of 2.7% in the previous month and an increase of 0.4% in corresponding month of last year i.e. Aug, 2021.
10. Measured by 20% **weighted trimmed mean Rural** increased by 23.8% on (YoY) basis in Aug, 2022 as compared to 21.7% in the previous month and by 7.8% in Aug, 2021. On (MoM) basis, it increased by 1.8% in Aug, 2022 as compared to an increase of 2.7% in the previous month and an increase of 0.6% in corresponding month of last year i.e. Aug, 2021.

Table 1.b Core Inflation (%) (Base 2015-16)

Period	NFNE				Trimmed			
	Urban		Rural		Urban		Rural	
	YoY	MoM	YoY	MoM	YoY	MoM	YoY	MoM
Aug-21	6.3	0.2	6.2	0.2	7.8	0.4	7.8	0.6
Sep-21	6.4	0.4	6.2	0.5	8.7	0.9	8.2	1.2
Oct-21	6.7	0.9	6.7	1.0	8.7	1.1	8.2	1.6
Nov-21	7.6	1.1	8.2	1.8	9.8	1.7	9.5	2.2
Dec-21	8.3	1.1	8.9	1.1	10.8	1.1	10.3	1.0
Jan-22	8.2	0.8	9.0	1.2	10.6	0.5	10.9	1.1
Feb-22	7.8	0.8	9.4	0.9	9.8	0.8	11.3	1.2
Mar-22	8.9	1.2	10.3	1.1	10.5	0.8	11.7	0.8
Apr-22	9.1	1.1	10.9	1.2	10.5	0.9	12.8	0.9
May-22	9.7	0.7	11.5	0.9	10.7	0.8	14.1	1.4
Jun-22	11.5	2.0	13.6	2.3	16.7	3.5	19.1	4.3
Jul-22	12.0	1.2	14.6	1.6	19.1	2.7	21.7	2.7
Aug-22	13.8	1.8	16.5	1.8	21.4	1.7	23.8	1.8

Table 1.1 Period Average and Y-o-Y % Change

INDEX	Average July - August % changes			August over August % changes		
	2022-2023	2021-2022	2020-2021	2022-2023	2021-2022	2020-2021
CPI (National)	26.10	8.38	8.74	27.26	8.35	8.21
CPI (Urban)	24.92	8.49	7.48	26.24	8.32	7.14
CPI (Rural)	27.86	8.21	10.71	28.79	8.40	9.86
SPI	31.09	16.04	12.72	33.97	15.92	11.73
WPI	39.91	17.21	3.24	41.25	17.15	3.26

Figure 1: Urban Inflation - YoY, Special Indices

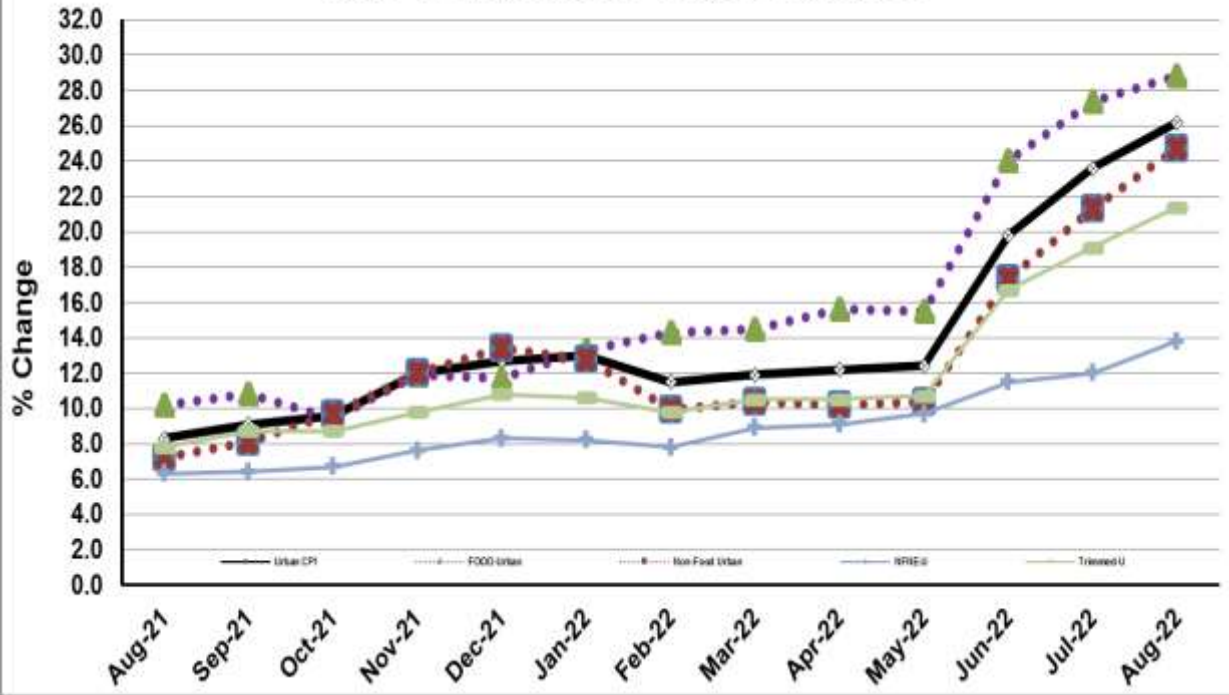
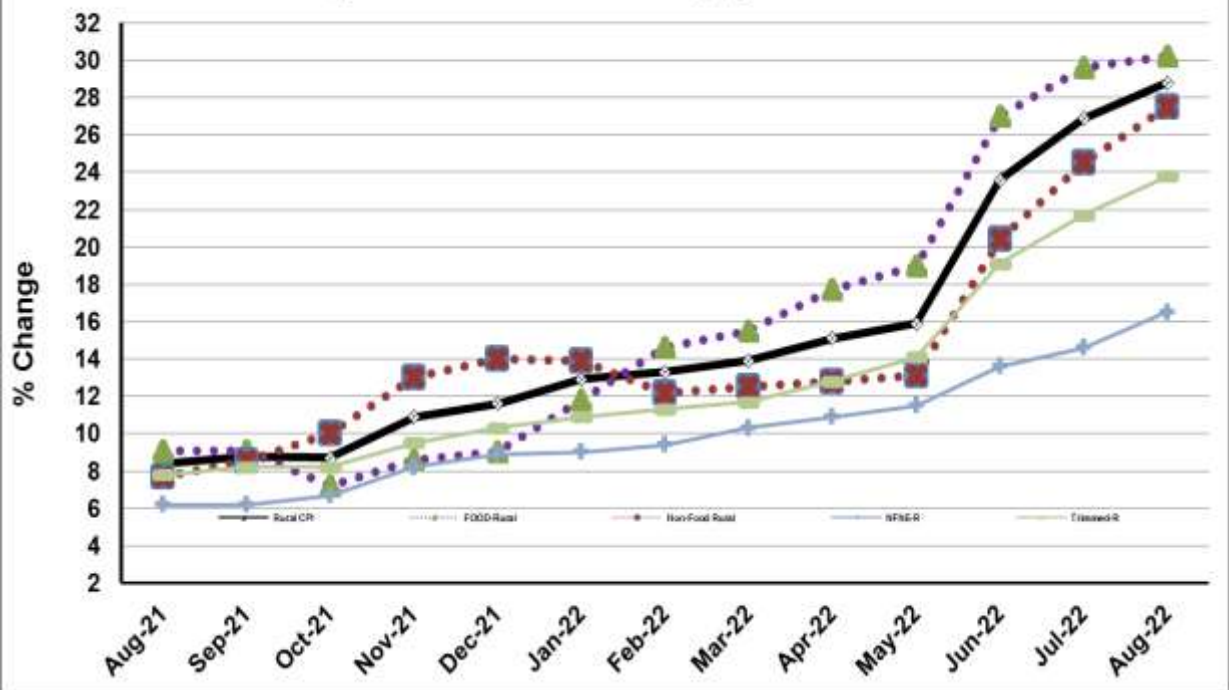


Figure 2: Rural Inflation - YoY, Special Indices



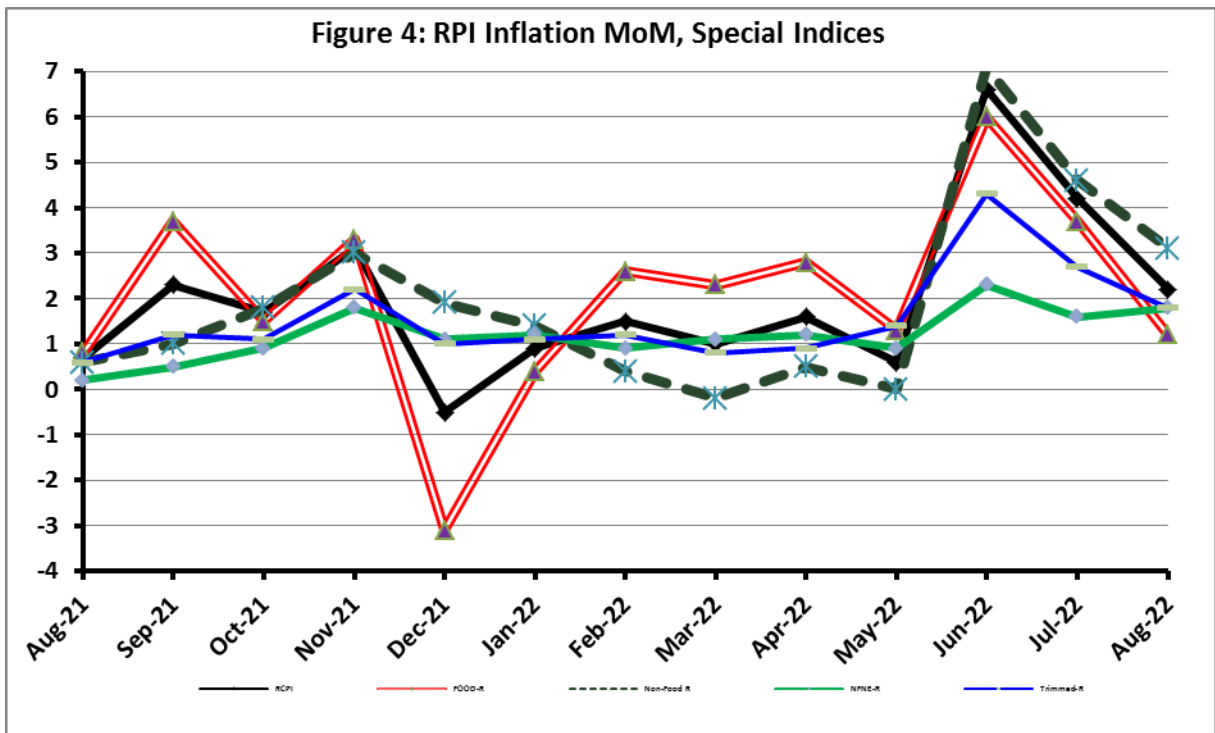
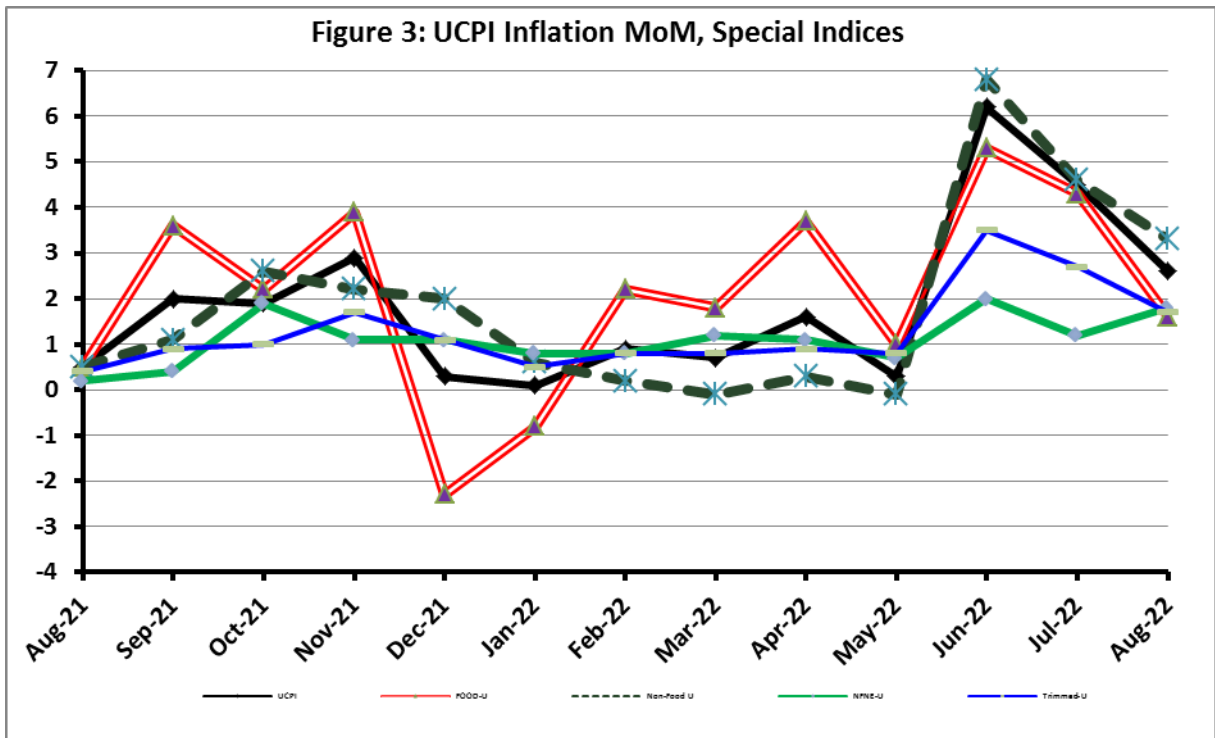


Figure 5: CPI Y.o.Y (National, Urban, Rural)

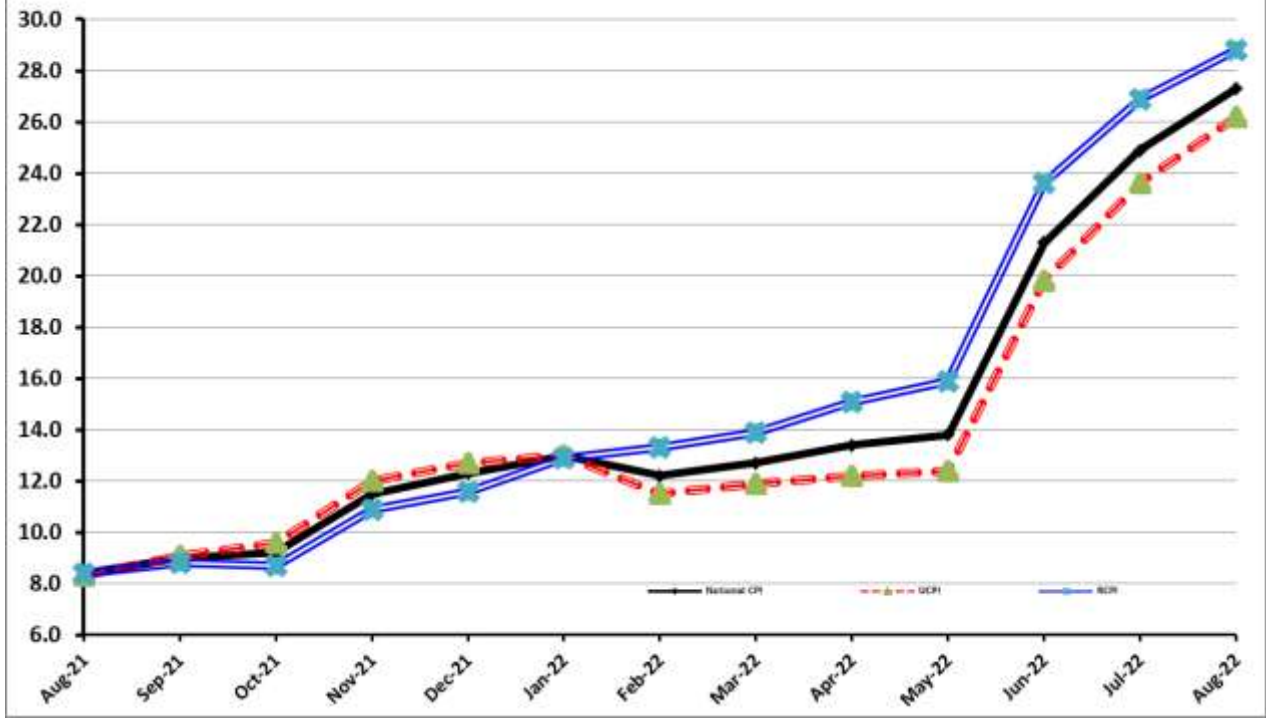
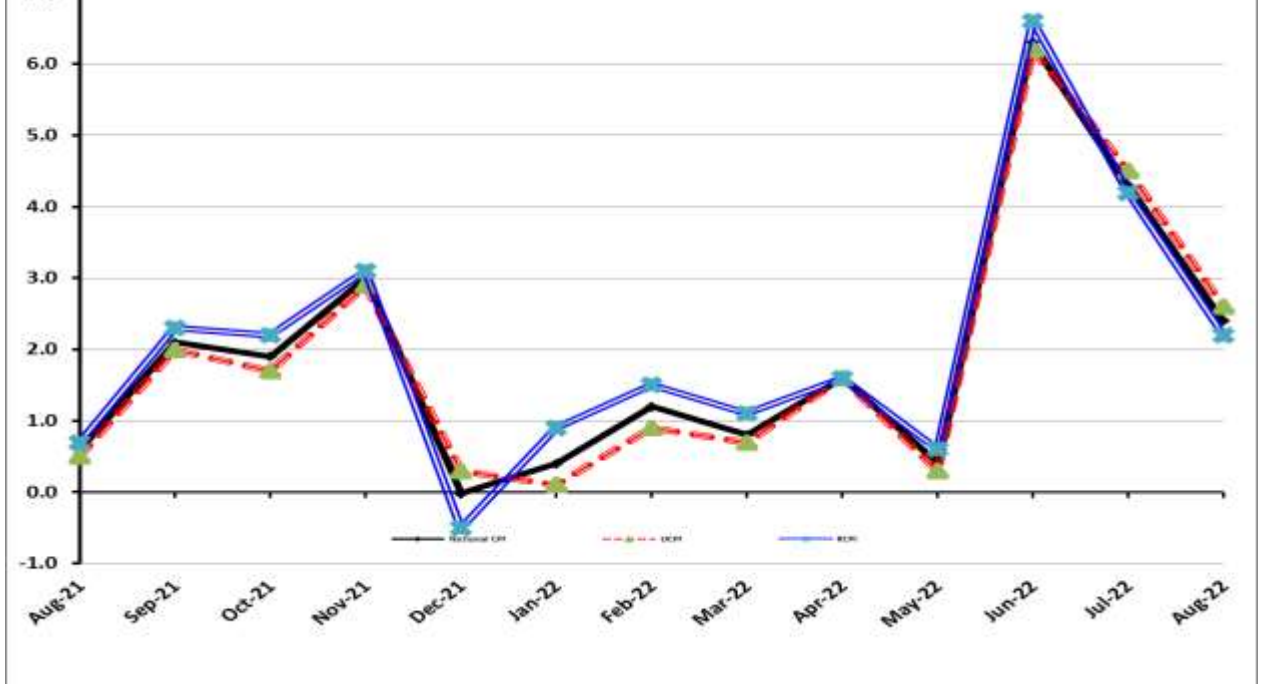


Figure 6: CPI M.o.M (National, Urban, Rural)



I. National Consumer Price Index (N-CPI)

The **National Consumer Price Index** for **Aug 2022** is **increased** by 2.45% over **July 2022** and increased by 27.26% over corresponding month of the last year i.e. **Aug 2021**.

Table 1: Consumer Price Index (National) by Group of Commodities and Services (Base 2015-16)									
No	Group	Group Weight (%)	Indices			% Change Aug 2022 Over		Impact (In % points) Aug 2022 Over	
			Aug 22	July 22	Aug 21	July 22	Aug 21	July 22	Aug 21
	General	100.00	187.84	183.35	147.61	2.45	27.26	2.45	27.26
1.	Food & Non-alcoholic Bev.	34.58	197.81	195.27	152.71	1.30	29.53	0.48	10.57
	<i>Non-perishable Food Items</i>	29.60	198.29	196.37	153.89	0.98	28.85	0.31	8.90
	<i>Perishable Food Items</i>	4.99	195.00	188.77	145.68	3.30	33.85	0.17	1.67
2.	Alcoholic Bev. & Tobacco	1.02	181.99	177.22	144.69	2.69	25.78	0.03	0.26
3.	Clothing & Footwear	8.60	176.21	171.40	149.80	2.80	17.63	0.23	1.54
4.	Housing, Water, Electricity, Gas & Fuels	23.63	182.46	173.03	143.03	5.45	27.57	1.21	6.31
5.	Furnishing & Household Equipment Maintenance	4.10	175.38	171.41	143.92	2.32	21.86	0.09	0.87
6.	Health	2.79	173.64	171.65	155.18	1.16	11.89	0.03	0.35
7.	Transport	5.91	244.55	245.25	149.96	-0.29	63.08	-0.02	3.79
8.	Communication	2.21	111.32	111.22	109.96	0.08	1.23	0.00	0.02
9.	Recreation & Culture	1.59	157.29	147.91	129.15	6.34	21.78	0.08	0.30
10.	Education	3.79	161.31	159.53	146.65	1.11	9.99	0.04	0.38
11.	Restaurants & Hotels	6.92	183.90	179.77	144.32	2.30	27.43	0.16	1.86
12.	Miscellaneous	4.87	185.67	180.71	154.76	2.74	19.97	0.13	1.02

II. Urban Consumer Price Index (UCPI)

The Urban Consumer Price Index for **Aug 2022** is increased by 2.62% over **July 2022** and increased by 26.24% over corresponding month of the last year i.e. **Aug 2021**.

Table 2: Consumer Price Index (Urban) by Group of Commodities and Services (Base 2015-16)

No	Group	Group Weight (%)	Indices			% Change Aug 2022 Over		Impact (In % points) Aug 2022 Over	
			Aug 22	July 22	Aug 21	July 22	Aug 21	July 22	Aug 21
	General	100.00	185.72	180.97	147.12	2.62	26.24	2.62	26.24
1.	Food & Non-alcoholic Bev.	30.42	196.59	193.81	152.49	1.43	28.92	0.47	9.12
	<i>Non-perishable Food Items</i>	25.97	196.88	194.52	153.60	1.21	28.18	0.34	7.64
	<i>Perishable Food Items</i>	4.46	194.91	189.66	146.03	2.77	33.47	0.13	1.48
2.	Alcoholic Bev. & Tobacco	0.85	193.60	187.28	153.94	3.37	25.76	0.03	0.23
3.	Clothing & Footwear	8.01	174.62	168.85	146.97	3.42	18.81	0.26	1.51
4.	Housing, Water, Electricity, Gas & Fuels	27.03	179.33	170.45	143.73	5.21	24.77	1.33	6.54
5.	Furnishing & Household Equip. & Maintenance	4.09	171.90	168.11	142.88	2.25	20.31	0.09	0.81
6.	Health	2.31	174.36	171.68	155.91	1.56	11.83	0.03	0.29
7.	Transport	6.14	245.69	246.08	151.29	-0.16	62.40	-0.01	3.94
8.	Communication	2.35	113.61	113.57	112.30	0.04	1.17	0.00	0.02
9.	Recreation & Culture	1.73	151.58	142.58	125.93	6.31	20.37	0.09	0.30
10.	Education	4.88	163.68	162.60	148.72	0.66	10.06	0.03	0.50
11.	Restaurants & Hotels	7.41	182.80	178.75	143.47	2.27	27.41	0.17	1.98
12.	Miscellaneous	4.77	185.12	179.12	154.10	3.35	20.13	0.16	1.01

Main contributors to month-on-month and year-on-year percentage changes are given below and detail is given in **Annexure-A**.

1. MONTH-ON-MONTH Top few commodities which varied from previous month are given below:

FOOD

Increased: Tomatoes (52.85%), Pulse Moong (15.27%), Vegetables (13.44%), Pulse Mash (12.47%), Pulse Masoor (11.76%), Eggs (7.53%), Besan (6.5%), Pulse Gram (6.08%), Gram whole (5.67%), Potatoes (4.99%), Beans (3.07%) and Cooking Oil (2.34%).

Decreased: Fruits (19.98%), Chicken (11.54%) and Vegetable Ghee (0.74%).

NON-FOOD

Increased: Electricity Charges (19.73%), Liquefied Hydrocarbons (8.53%), Readymade Garments (7.85%), Construction Input Items (7.53%), Stationery (7.29%), Cleaning & Laundering (6.73%), Motor Vehicle Accessories (5.20%), Cotton Cloth (4.67%) and Furniture & Furnishing (2.33%).

Decreased: Motor Fuel (2.60%).

YEAR-ON-YEAR: Top few commodities which varied from corresponding month of previous year i.e. Aug, 2021 are given below:

FOOD

Increased: Pulse Masoor (114.34%), Onions (90.54%), Mustard Oil (81.16%), Gram Whole (77.23%), Cooking Oil (74.66%), Vegetable Ghee (69.82%), Pulse Gram (60.25%), Chicken (59.89%), Pulse Mash (52.70%), Besan (47.83%), Wheat (44.48%), Vegetables (41.62%), Tomatoes (38.02%), Rice (36.28%), Eggs (35.27%), Meat (26.81%) and Milk (25.01%).

Decreased: Condiments & Spices (17.43%) and Sugar (15.69%).

NON-FOOD

Increased: Electricity Charges (123.37%), Motor Fuel (84.21%), Stationery (44.12%), Cleaning & Laundering (39.16%), Liquefied Hydrocarbons (33.66%), Washing Soap/Detergents/Match Box (28.86%), Construction Input Items (27.77%), Motor Vehicle Accessories (27.37%) and Cotton Cloth (23.53%).

III. Rural Consumer Price Index (RCPI)

The Rural Consumer Price Index for Aug 2022 is increased by 2.19% over July 2022 and increased by 28.79% over corresponding month of the last year i.e. Aug 2021.

Table 3: Consumer Price Index (Rural) by Group of Commodities and Services (Base 2015-16)

No	Group	Group Weight (%)	Indices			% Change Aug 2022 Over		Impact (In % points) Aug 2022 Over	
			Aug 22	July 22	Aug 21	July 22	Aug 21	July 22	Aug 21
	General	100.00	191.04	186.94	148.34	2.19	28.79	2.19	28.79
1.	Food & Non-alcoholic Bev.	40.87	199.18	196.92	152.96	1.15	30.22	0.50	12.74
	<i>Non-perishable Food Items</i>	35.08	199.86	198.43	154.22	0.72	29.59	0.27	10.79
	<i>Perishable Food Items</i>	5.79	195.10	187.74	145.28	3.92	34.29	0.23	1.94
2.	Alcoholic Bev. & Tobacco	1.28	170.28	167.08	135.37	1.92	25.79	0.02	0.30
3.	Clothing & Footwear	9.48	178.23	174.66	153.41	2.04	16.18	0.18	1.59
4.	Housing, Water, Electricity, Gas & Fuels	18.49	189.36	178.72	141.47	5.95	33.85	1.05	5.97
5.	Furnishing & Household Equip. & Maintenance	4.10	180.63	176.37	145.48	2.42	24.16	0.09	0.97
6.	Health	3.51	172.92	171.62	154.46	0.76	11.95	0.02	0.44
7.	Transport	5.56	242.64	243.87	147.74	-0.50	64.23	-0.04	3.56
8.	Communication	1.99	107.24	107.05	105.80	0.18	1.36	0.00	0.02
9.	Recreation & Culture	1.38	168.11	158.03	135.26	6.38	24.29	0.07	0.30
10.	Education	2.13	153.12	148.94	139.52	2.81	9.75	0.05	0.20
11.	Restaurants & Hotels	6.19	185.90	181.62	145.85	2.36	27.46	0.14	1.67
12.	Miscellaneous	5.02	186.45	182.99	155.71	1.89	19.74	0.09	1.04

Main contributors to Month-on-Month and Year-on-Year percentage changes are given below and detail is given in **Annexure-B**.

1. MONTH-ON-MONTH Top few commodities which varied from previous month are given below:

FOOD

Increased: Tomatoes (30.02%), Vegetables (19.62%), Pulse Mash (15.15%), Pulse Masoor (13.69%), Pulse Moong (12.71%), Besan (9.71%), Pulse Gram (8.92%), Condiments & Spices (7.73%), Eggs (6.55%), Gram Whole (6.29%), Potatoes (5.51%), Onions (4.26%), Beans (3.57%), Rice (3.57%) and Meat (1.88%).

Decreased: Fruits (24.28%), Chicken (13.64%), Vegetable Ghee (2.86%), Cooking Oil (2.54%), Mustard Oil (1.18%) and Sugar (0.31%)

NON-FOOD

Increased: Electricity Charges (19.73%), Liquefied Hydrocarbons (6.97%), Cleaning & Laundering (3.42%), Footwear (3.30%), Stationery (2.97%), Furniture & Furnishing (2.83%), Readymade Garments (2.40%) and Cotton Cloth (1.88%).

Decreased: Motor Fuels (3.16%).

2. YEAR-ON-YEAR: Top few commodities which varied from corresponding month of previous year i.e. Aug 2021 are given below:

FOOD

Increased: Pulse Masoor (118.64%), Onions (96.70%), Gram Whole (88.82%), Cooking Oil (69.61%), Mustard Oil (69.19%), Vegetable Ghee (68.67%), Pulse Gram (65.65%), Chicken (63.26%), Pulse Mash (52.38%), Besan (48.54%), Vegetables (41.61%), Wheat (39.80%), Rice (35.29%), Eggs (34.54%), Tomatoes (29.72%), Beans (29.56%), Meat (26.08%) and Fruits (24.41%).

Decreased: Sugar (16.29%)

NON-FOOD

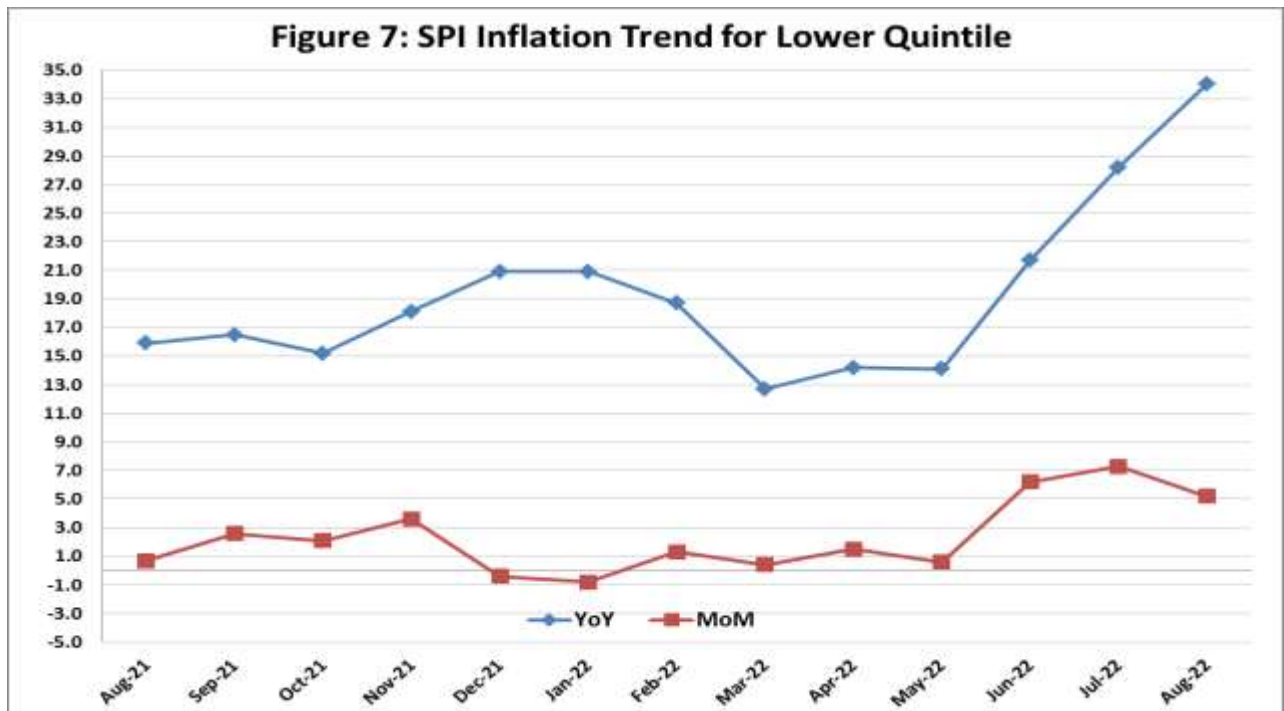
Increased: Electricity Charges (123.37%), Motor Fuels (87.34%), Liquefied Hydrocarbons (43.92%), Construction Input Items (35.44%), Cleaning & Laundering (30.49%), Motor Vehicles Accessories (28.80%), Washing Soaps/Detergents/ Match Box (28.23%), Stationery (27.23%), Solid Fuel (22.25%) and Hosiery (22.15%).

IV. Sensitive Price Indicator

Quintile-wise percentage changes YoY and MoM are given below in Table 4. The series from Aug 2021 to Aug 2022 is also graphed below in Figure 7.

Table 4: Sensitive Price Indicator (Base 2015-16)					
Quintiles	Indices			% Change Aug 2022 Over	
	Aug 22	July 22	Aug 21	July 22	Aug 21
1	218.89	207.98	163.39	5.25	33.97
2	213.06	200.45	152.44	6.29	39.77
3	212.24	201.15	153.77	5.51	38.02
4	207.15	197.56	150.08	4.85	38.03
5	214.18	203.13	151.79	5.44	41.10
Combined	213.22	201.88	151.62	5.62	40.63

Table 4.1 : Weekly Percentage Change of SPI During Aug - 2022				
Quintiles	% Change with Previous week			
	04-08-2022	11-08-2022	18-08-2022	25-08-2022
Quintile 1	1.16	-0.12	1.80	2.66
Combined	0.82	-0.08	3.35	1.83



V. Wholesale Price Index

The Wholesale Price Index for Aug, 2022 increased by 3.14% over July, 2022. It increased by 41.25% over the corresponding month of the last year i.e. Aug, 2021. YoY and MoM movements, from Aug, 2021 to Aug, 2022 are also graphed below in Figure 8.

Table 5: Wholesale Price Index by Group of Commodities (Base 2015-16)

No	Group	Group Weight (%)	Indices			% Change Aug 2022 Over		Impact (In % points) Aug 2022 Over	
			Aug 22	July 22	Aug 21	July 22	Aug 21	July 22	Aug 21
	General	100.00	239.87	232.57	169.82	3.14	41.25	3.14	41.25
1	Agriculture Forestry & Fishery	25.77	222.12	209.28	172.52	6.14	28.75	1.42	7.53
2	Ores/Minerals, Elec., Gas & Water	12.01	250.75	214.49	169.35	16.91	48.07	1.87	5.76
3	Food, Beverages, Tobacco, Textiles & Leather Products	31.11	203.25	199.50	163.47	1.88	24.33	0.50	7.29
	i. Food Products, Beverages & Tobacco	20.07	201.27	198.74	159.78	1.27	25.97	0.22	4.90
	ii. Textiles & Apparels	10.33	211.23	204.82	173.51	3.13	21.74	0.28	2.29
	iii. Leather Products	0.71	143.51	143.51	122.09	0.00	17.54	0.00	0.09
4	Other Transportable Goods	22.40	313.08	322.51	176.15	-2.92	77.73	-0.91	18.06
5	Metal Product, Machinery & Equipment	8.72	219.95	213.23	168.82	3.15	30.29	0.25	2.62

Main contributors to month-on-month and year-on-year percentage changes are given below and detail is given in **Annexure-C**.

1. MONTH-ON-MONTH: Top few commodities which varied from previous month are given below:

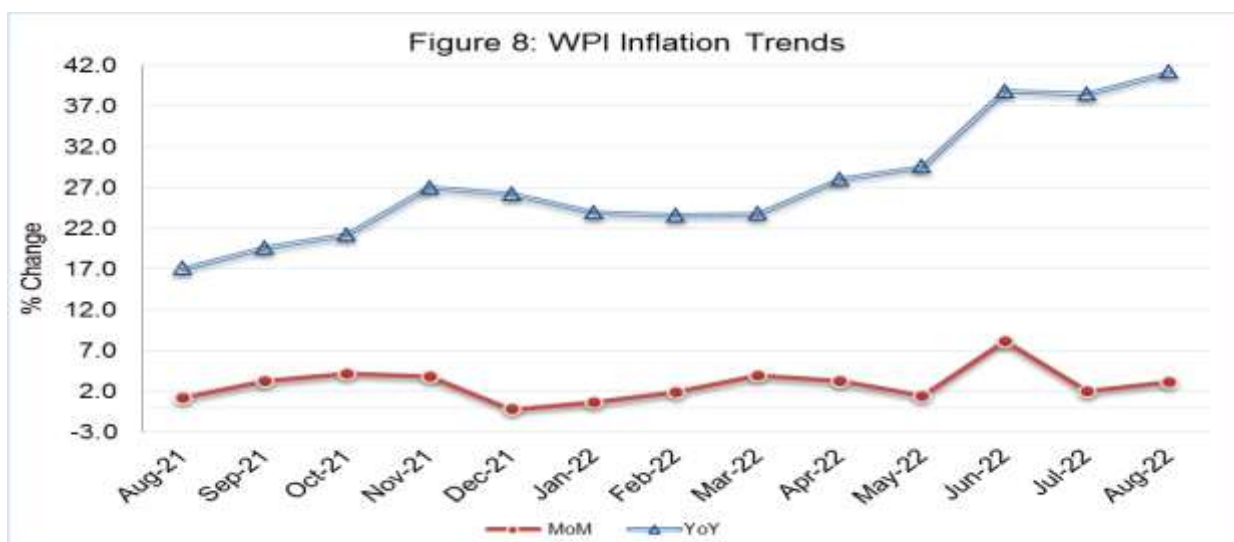
Increased: Electrical Energy (33.90%), Vegetables (31.96%), Paper (21.09%), Pipe Fittings (20.36%), Silk & Rayon Fabrics (14.89%), Fibre Crops (13.56%), Stimulant & Spice Crops (13.40%), Other Fabrics (12.10%), Tractors (11.02%), Chuff Cutter (10.88%), Ceramics & Sanitary Fixture (8.9%), Lathe Machines (8.87%), Eggs (7.90%), Pulses (7.59%), Cereal Flour (7.54%), Readymade Garments (7.35%) and Mobil Oil (6.81%).

Decreased: Poultry (11.47%), Fruits (9.28%), Diesel Oil (7.29%), Kerosene Oil (6.29%), Motor Spirit (4.71%), Bajra (3.92%), Furnace Oil (3.13%), Cement (2.47%), Maize (2.05%) and Steel Bar & Sheets (1.32%).

2. YEAR-ON-YEAR: Top few commodities which varied from previous year are given below:

Increased: Chuff Cutter (178.21%), Concrete Mixture (139.71%), Kerosene Oil (127.8%), Diesel Oil (118.34%), Electrical Energy (115.8%), Motor Spirit (93.08%), Furnace Oil (83.93%), Fertilizers (81.10%), Coal (79.42%), Chemicals (79.06%), Pulses (74.24%), Vegetable Ghee (71.82%), Cultivators (68.18%), Bed Foam (65.43%), Poultry (63.71%), Pipe Fittings (57.97%), Lathe Machines (56.47%), Glass sheets (55.69%), Vegetable Oils (53.92%), Other Cereal Flour (52.41%), Vegetables (49.70%) and Cement (48.41%).

Decreased: Spices (39.78%), Stimulant & Spice Crops (19.24%), Bajra (15.18%) and Sugar (14.63%).



Annexure A:CPI (Urban) Index Numbers by Commodity Groups & Commodities (2015-16=100)

Item and Specification	Weight	Index Numbers			% Change in Aug 2022 over		
		Aug 22	Jul 22	Aug 21	Jul 2022	Aug 2021	
General	100.0000	185.72	180.97	147.12	+	2.62	+ 26.24
Food and non-alcoholic Bevera	30.4215	196.59	193.81	152.49	+	1.43	+ 28.92
01 Wheat	0.6120	222.98	223.30	154.33	-	0.14	+ 44.48
02 Wheat flour	3.0075	183.94	182.49	147.97	+	0.79	+ 24.31
03 Wheat products	0.0936	202.89	196.93	161.02	+	3.03	+ 26.00
04 Besan	0.0830	183.65	172.44	124.23	+	6.50	+ 47.83
05 Rice	1.1804	200.08	192.50	146.82	+	3.94	+ 36.28
06 Bakery and confectionary	0.4770	187.99	185.75	148.70	+	1.21	+ 26.42
07 Nimco	0.1224	208.32	202.38	147.14	+	2.94	+ 41.58
08 Meat	2.0411	221.55	219.27	174.71	+	1.04	+ 26.81
09 Chicken	1.3631	173.22	195.81	108.34	-	11.54	+ <u>59.89</u>
10 Fish	0.3855	124.28	124.55	112.91	-	0.22	+ 10.07
11 Milk fresh	7.1070	181.73	177.89	145.37	+	2.16	+ 25.01
12 Milk products	0.6407	181.53	177.39	149.28	+	2.33	+ 21.60
13 Milk powder	0.3106	168.42	165.60	140.36	+	1.70	+ 19.99
14 Eggs	0.5083	242.76	225.77	179.46	+	7.53	+ 35.27
15 Butter	0.0932	253.18	242.50	195.19	+	4.40	+ 29.71
16 Mustard oil	0.0120	307.72	307.27	169.86	+	0.15	+ <u>81.16</u>
17 Cooking oil	1.1016	332.30	324.70	190.26	+	2.34	+ <u>74.66</u>
18 Vegetable ghee	1.0324	341.11	343.66	200.86	-	0.74	+ <u>69.82</u>
19 Dry fruits	0.3299	156.73	155.76	136.90	+	0.62	+ 14.49
20 Fresh fruits	1.4363	145.28	181.56	120.29	-	19.98	+ 20.77
21 Pulse masoor	0.1624	228.62	204.57	106.66	+	11.76	+ <u>114.3</u>
22 Pulse moong	0.1697	132.31	114.78	118.66	+	15.27	+ 11.50
23 Pulse mash	0.1152	160.69	142.88	105.23	+	12.47	+ <u>52.70</u>
24 Pulse gram	0.1660	194.53	183.38	121.39	+	6.08	+ <u>60.25</u>
25 Gram whole	0.0912	228.98	216.70	129.20	+	5.67	+ <u>77.23</u>
26 Beans	0.0408	202.50	196.47	168.55	+	3.07	+ 20.14
27 Potatoes	0.4496	234.66	223.50	206.06	+	4.99	+ 13.88
28 Onions	0.5928	202.51	202.86	106.28	-	0.17	+ <u>90.54</u>
29 Tomatoes	0.3459	251.78	164.72	182.42	+	<u>52.85</u>	+ 38.02
30 Fresh vegetables	1.5306	213.51	188.21	150.76	+	13.44	+ 41.62
31 Sugar	1.1130	142.29	142.35	168.77	-	0.04	- 15.69
32 Gur	0.0379	158.19	157.23	153.52	+	0.61	+ 3.04
33 Honey	0.1017	165.75	156.51	131.84	+	5.90	+ 25.72
34 Sweetmeat	0.3535	205.41	199.43	156.91	+	3.00	+ 30.91
35 Ice cream	0.1044	154.93	149.17	146.41	+	3.86	+ 5.82
36 Condiments and Spices	1.3340	178.29	174.89	215.92	+	1.94	- 17.43
37 Dessert preparation	0.0419	162.09	156.22	133.21	+	3.76	+ 21.68
38 Tea	0.8427	175.86	173.40	140.84	+	1.42	+ 24.87
39 Beverages	0.8906	154.76	150.57	131.92	+	2.78	+ 17.31
Alcoholic Beverages, Tobacco	0.8540	193.60	187.28	153.94	+	3.37	+ 25.76
40 Cigarettes	0.7167	176.54	171.44	141.09	+	2.97	+ 25.13
41 Pan prepared	0.1373	282.61	269.99	221.00	+	4.67	+ 27.88
Clothing and footwear	8.0096	174.62	168.85	146.97	+	3.42	+ 18.81
42 Cotton cloth	2.2227	185.98	177.68	150.56	+	4.67	+ 23.53
43 Woolen cloth	0.8361	162.06	160.08	141.67	+	1.24	+ 14.39
44 Readymade garments	1.3196	163.28	151.40	139.41	+	7.85	+ 17.12
45 Woolen readymade garments	0.4307	159.54	159.54	142.21	+	0.00	+ 12.19
46 Tailoring	1.0741	179.26	171.38	153.06	+	4.60	+ 17.12
47 Hosiery	0.4070	165.33	165.12	144.77	+	0.13	+ 14.20
48 Dopatta	0.1713	145.46	141.78	129.93	+	2.60	+ 11.95
49 Cleaning and laundering	0.0665	206.78	193.74	148.59	+	6.73	+ 39.16
50 Footwear	1.4816	180.24	179.97	150.78	+	0.15	+ 19.54
Housing, water, Elec., Gas an	27.0332	179.33	170.45	143.73	+	5.21	+ 24.77
51 House rent	19.2558	147.94	147.94	140.07	+	0.00	+ 5.62
52 Construction input items	0.3765	202.61	188.42	158.57	+	7.53	+ 27.77
53 Construction wage rates	0.2025	183.05	177.08	157.88	+	3.37	+ 15.94
54 Water supply	0.5269	166.58	166.58	162.68	+	0.00	+ 2.40
55 Garbage collection	0.1064	207.57	200.69	175.57	+	3.43	+ 18.23
56 Electricity charges	4.5562	294.00	245.55	131.62	+	19.73	+ <u>123.3</u>
57 Gas charges	1.0807	216.94	216.94	216.94	+	0.00	+ 0.00
58 Liquefied Hydrocarbons	0.5064	282.91	260.68	211.66	+	8.53	+ 33.66
59 Solid Fuel	0.4218	138.87	137.45	120.79	+	1.03	+ 14.97

Annexure A:CPI (Urban) Index Numbers by Commodity Groups & Commodities (2015-16=100)

Item and Specification	Weight	Index Numbers			% Change in Aug 2022 over			
		Aug 22	Jul 22	Aug 21	Jul 2022	Aug 2021		
<i>Furnishing and household equi</i>	4.0937	171.90	168.11	142.88	+	2.25	+	20.31
60 Furniture and furnishing	0.4750	168.75	164.90	144.24	+	2.33	+	16.99
61 Carpets	0.0308	128.62	125.99	113.69	+	2.09	+	13.13
62 Household textiles	0.3420	145.55	145.37	135.54	+	0.12	+	7.39
63 Household equipments	1.0032	173.47	171.13	146.49	+	1.37	+	18.42
64 Plastic products	0.0536	150.67	150.17	126.43	+	0.33	+	19.17
65 Major tools & equipments	0.0084	170.05	169.47	138.91	+	0.34	+	22.42
66 Washing soap/detergents/match	1.4112	189.07	182.01	146.73	+	3.88	+	28.86
67 Household servant	0.7695	155.26	153.66	135.87	+	1.04	+	14.27
<i>Health</i>	2.3098	174.36	171.68	155.91	+	1.56	+	11.83
68 Drugs and medicines	1.0735	174.89	174.21	155.75	+	0.39	+	12.29
69 Therapeutic Appliances and Eq	0.0054	123.38	123.13	116.67	+	0.20	+	5.75
70 Doctor (MBBS) clinic fee	0.4044	225.85	213.19	193.89	+	5.94	+	16.48
71 Dental services	0.0156	144.65	138.06	128.98	+	4.77	+	12.15
72 Medical tests	0.2367	149.69	149.45	134.84	+	0.16	+	11.01
73 Hospitals services	0.5742	148.56	148.22	139.23	+	0.23	+	6.70
<i>Transport</i>	6.1368	245.69	246.08	151.29	-	0.16	+	62.40
74 Motor vehicles	0.8097	211.09	188.32	152.56	+	12.09	+	38.37
75 Motor vehicle accessories	0.1941	183.85	174.77	144.34	+	5.20	+	27.37
76 Motor fuel	2.9088	311.34	319.65	169.01	-	2.60	+	84.21
77 Mechanical services	0.4290	166.83	162.87	139.00	+	2.43	+	20.02
78 Motor vehicle tax	0.0482	148.53	136.37	136.37	+	8.92	+	8.92
79 Transport services	1.7470	181.33	181.74	125.41	-	0.23	+	44.59
<i>Communication</i>	2.3536	113.61	113.57	112.30	+	0.04	+	1.17
80 Postal services	0.0190	184.35	184.35	163.41	+	0.00	+	12.81
81 Communication apparatus	0.4524	131.76	131.57	128.20	+	0.14	+	2.78
82 Communication Services	1.8822	108.53	108.53	107.97	+	0.00	+	0.52
<i>Recreation and culture</i>	1.7301	151.58	142.58	125.93	+	6.31	+	20.37
83 Recreation and culture	0.6478	124.75	123.92	115.15	+	0.67	+	8.34
84 Text books	0.6655	154.61	138.87	128.89	+	11.33	+	19.96
85 Newspapers	0.0716	157.93	157.93	151.55	+	0.00	+	4.21
86 stationery	0.3452	194.79	181.56	135.16	+	7.29	+	44.12
<i>Education</i>	4.8807	163.68	162.60	148.72	+	0.66	+	10.06
87 Education	4.8807	163.68	162.60	148.72	+	0.66	+	10.06
<i>Restaurants and hotels</i>	7.4050	182.80	178.75	143.47	+	2.27	+	27.41
88 Readymade food	5.5235	187.83	183.51	145.92	+	2.35	+	28.72
89 Marriage Hall Charges	1.7514	171.31	167.88	137.97	+	2.04	+	24.16
90 Accommodation Services	0.1301	123.61	122.86	113.30	+	0.61	+	9.10
<i>Misc. goods and services</i>	4.7720	185.12	179.12	154.10	+	3.35	+	20.13
91 Personal Grooming Services	0.8001	167.61	163.58	138.99	+	2.46	+	20.59
92 Electrical Appliances for Per	0.0465	139.54	137.58	119.66	+	1.42	+	16.61
93 Appliances/Articles/Products	2.9807	174.20	167.02	145.68	+	4.30	+	19.58
94 Personal Effects n.e.c.	0.9447	236.64	232.52	195.18	+	1.77	+	21.24

Annexure B:CPI (Rural) Index Numbers by Commodity Groups & Commodities (2015-16=100)

Item and Specification	Weight	Index Numbers			% Change in Aug 2022 over			
		Aug 22	Jul 22	Aug 21	Jul 2022	Aug 2021		
General	100.0000	191.04	186.94	148.34	+	2.19	+	28.79
Food and non-alcoholic Bevera	40.8668	199.18	196.92	152.96	+	1.15	+	30.22
01 Wheat	3.4736	215.01	212.38	153.80	+	1.24	+	39.80
02 Wheat Flour	3.4297	185.08	182.59	150.96	+	1.36	+	22.60
03 Wheat Products	0.1068	194.28	188.05	149.72	+	3.31	+	29.76
04 Besan	0.0728	188.27	171.60	126.75	+	9.71	+	48.54
05 Rice	1.5501	254.96	246.17	188.45	+	3.57	+	35.29
06 Bakery and Confectionary	0.3702	204.03	195.79	148.12	+	4.21	+	37.75
07 Nimco	0.0774	199.31	188.71	135.47	+	5.62	+	47.12
08 Meat	1.7146	221.63	217.55	175.79	+	1.88	+	26.08
09 Chicken	1.4641	183.41	212.38	112.34	-	13.64	+	<u>63.26</u>
10 Fish	0.2640	140.85	140.85	124.38	+	0.00	+	13.24
11 Milk fresh	10.3803	169.62	167.63	139.41	+	1.19	+	21.67
12 Milk products	0.9624	162.68	160.70	136.33	+	1.23	+	19.33
13 Milk powder	0.1062	144.16	139.58	130.24	+	3.28	+	10.69
14 Eggs	0.5665	231.00	216.79	171.70	+	6.55	+	34.54
15 Butter	0.3333	180.99	179.52	148.79	+	0.82	+	21.64
16 Mustard oil	0.0136	299.93	303.50	177.27	-	1.18	+	<u>69.19</u>
17 Cooking oil	0.6011	358.98	368.32	211.65	-	2.54	+	<u>69.61</u>
18 Vegetable ghee	2.3764	366.68	377.49	217.40	-	2.86	+	<u>68.67</u>
19 Dry fruits	0.2496	182.30	176.04	154.97	+	3.56	+	17.64
20 Fresh fruits	1.4505	148.76	196.45	119.57	-	24.28	+	24.41
21 Pulse Masoor	0.2076	244.44	215.01	111.80	+	13.69	+	<u>118.6</u>
22 Pulse Moong	0.2510	143.64	127.44	119.36	+	12.71	+	20.34
23 Pulse Mash	0.1465	160.32	139.23	105.21	+	15.15	+	<u>52.38</u>
24 Pulse Gram	0.2751	198.93	182.64	120.09	+	8.92	+	<u>65.65</u>
25 Gram Whole	0.1116	235.86	221.90	124.91	+	6.29	+	<u>88.82</u>
26 Beans	0.0896	224.43	216.70	173.23	+	3.57	+	29.56
27 Potatoes	0.7437	259.63	246.08	235.12	+	5.51	+	10.42
28 Onions	0.8965	196.66	188.63	99.98	+	4.26	+	<u>96.70</u>
29 Tomatoes	0.5069	205.30	157.90	158.27	+	30.02	+	29.72
30 Fresh Vegetables	2.0947	200.98	168.01	141.92	+	19.62	+	41.61
31 Sugar	2.0296	141.88	142.32	169.48	-	0.31	-	16.29
32 Gur	0.1522	155.14	150.38	154.87	+	3.17	+	0.17
33 Honey	0.0296	164.65	162.12	137.87	+	1.56	+	19.42
34 Sweetmeat	0.3967	191.76	183.13	141.66	+	4.71	+	35.37
35 Ice Cream	0.0568	148.73	148.26	142.84	+	0.32	+	4.12
36 Condiments and Spices	1.4919	181.22	168.21	175.33	+	7.73	+	3.36
37 Dessert Preparation	0.0133	157.35	153.80	132.10	+	2.31	+	19.11
38 Tea	1.2566	169.22	166.44	138.10	+	1.67	+	22.53
39 Beverages	0.5537	151.40	148.31	133.95	+	2.08	+	13.03
Alcoholic Beverages, Tobacco	1.2786	170.28	167.08	135.37	+	1.92	+	25.79
40 Cigarettes	1.2364	168.14	164.88	133.97	+	1.98	+	25.51
41 Pan Prepared	0.0422	232.83	231.68	176.12	+	0.50	+	32.20
Clothing and footwear	9.4826	178.23	174.66	153.41	+	2.04	+	16.18
42 Cotton Cloth	2.8381	196.09	192.47	169.22	+	1.88	+	15.88
43 Woolen Cloth	1.0959	170.82	168.22	144.22	+	1.55	+	18.44
44 Readymade Garments	1.1345	169.07	165.10	144.83	+	2.40	+	16.74
45 Woolen Readymade Garments	0.5401	164.85	164.85	143.31	+	0.00	+	15.03
46 Tailoring	1.2999	179.77	175.69	152.35	+	2.32	+	18.00
47 Hosiery	0.4322	227.19	224.89	186.00	+	1.02	+	22.15
48 Dupatta	0.2078	164.52	162.96	145.04	+	0.96	+	13.43
49 Cleaning and Laundering	0.0176	188.13	181.91	144.17	+	3.42	+	30.49
50 Footwear	1.9165	154.50	149.57	137.55	+	3.30	+	12.32
Housing, water, Elec., Gas an	18.4853	189.36	178.72	141.47	+	5.95	+	33.85
51 House Rent	8.6110	148.48	148.48	140.21	+	0.00	+	5.90
52 Construction Input Items	0.6306	184.00	181.05	135.85	+	1.63	+	35.44
53 Construction Wage Rates	0.2526	181.44	179.69	160.29	+	0.97	+	13.19
54 Water Supply	0.0645	220.09	220.09	218.49	+	0.00	+	0.73
55 Garbage Collection	0.0080	169.61	169.61	154.75	+	0.00	+	9.60
56 Electricity Charges	3.4431	294.00	245.55	131.62	+	19.73	+	<u>123.3</u>
57 Liquefied Hydrocarbons	0.9994	252.66	236.20	175.55	+	6.97	+	43.92
58 Solid Fuel	4.4761	174.17	171.69	142.47	+	1.44	+	22.25

Annexure B:CPI (Rural) Index Numbers by Commodity Groups & Commodities (2015-16=100)

Item and Specification	Weight	Index Numbers			% Change in Aug 2022 over			
		Aug 22	Jul 22	Aug 21	Jul 2022	Aug 2021		
<i>Furnishing and household equi</i>	4.1031	180.63	176.37	145.48	+	2.42	+	24.16
59 Furniture and Furnishing	0.5786	181.03	176.05	148.65	+	2.83	+	21.78
60 Household Textiles	0.4382	159.17	157.99	134.08	+	0.75	+	18.71
61 Household Equipments	1.2774	187.24	182.43	153.35	+	2.64	+	22.10
62 Plastic Products	0.0776	194.08	191.32	160.52	+	1.44	+	20.91
63 Major Tools and Equipments	0.0324	160.91	155.85	131.12	+	3.25	+	22.72
64 Washing Soaps, Detergents and	1.6989	180.82	176.37	141.01	+	2.52	+	28.23
<i>Health</i>	3.5141	172.92	171.62	154.46	+	0.76	+	11.95
65 Drugs and Medicines	1.5792	179.59	178.74	155.32	+	0.48	+	15.63
66 Doctor Clinic Fee	0.5128	216.75	212.46	190.32	+	2.02	+	13.89
67 Dental Services	0.0181	149.06	145.35	132.61	+	2.55	+	12.40
68 Medical Tests	0.3967	164.43	163.56	155.15	+	0.53	+	5.98
69 Hospitals Services	1.0073	143.94	143.31	134.96	+	0.44	+	6.65
<i>Transport</i>	5.5580	242.64	243.87	147.74	-	0.50	+	64.23
70 Motor Vehicles	0.7305	159.83	155.65	136.23	+	2.69	+	17.32
71 Motor Vehicles Accessories	0.1572	186.89	183.46	145.10	+	1.87	+	28.80
72 Motor Fuels	2.4932	311.17	321.32	166.10	-	3.16	+	87.34
73 Mechanical Services	0.3645	177.91	173.50	156.82	+	2.54	+	13.45
74 Motor Vehicle Tax	0.0174	150.93	120.86	120.86	+	24.88	+	24.88
75 Transport Services	1.7952	200.07	192.97	125.59	+	3.68	+	59.30
<i>Communication</i>	1.9940	107.24	107.05	105.80	+	0.18	+	1.36
76 Postal Services	0.0070	149.43	149.43	149.43	+	0.00	+	0.00
77 Communication Apparatus	0.3362	129.24	128.14	121.44	+	0.86	+	6.42
78 Communication Services	1.6508	102.58	102.58	102.42	+	0.00	+	0.16
<i>Recreation and culture</i>	1.3764	168.11	158.03	135.26	+	6.38	+	24.29
79 Recreation and Culture	0.4763	173.10	162.15	136.61	+	6.75	+	26.71
80 Text Books	0.5047	149.01	135.85	123.53	+	9.69	+	20.63
81 Newspapers	0.0230	165.72	165.72	165.56	+	0.00	+	0.10
82 Stationery	0.3724	187.76	182.34	147.57	+	2.97	+	27.23
<i>Education</i>	2.1342	153.12	148.94	139.52	+	2.81	+	9.75
83 Education	2.1342	153.12	148.94	139.52	+	2.81	+	9.75
<i>Restaurants and hotels</i>	6.1895	185.90	181.62	145.85	+	2.36	+	27.46
84 Readymade Food	3.8001	206.50	202.27	157.66	+	2.09	+	30.98
85 Marriage Hall Charges	2.2525	155.83	151.42	128.62	+	2.91	+	21.16
86 Accommodation Services	0.1369	108.81	105.32	101.62	+	3.31	+	7.08
<i>Misc. goods and services</i>	5.0174	186.45	182.99	155.71	+	1.89	+	19.74
87 Personal Grooming Services	1.5363	198.80	192.82	162.67	+	3.10	+	22.21
88 Appliances/Articles/Products	2.2746	152.51	150.61	134.84	+	1.26	+	13.10
89 Personal Effects n.e.c.	1.2065	234.71	231.53	186.19	+	1.37	+	26.06

Annexure C: Wholesale Price Indices by Major Groups & Commodities

(2015-16=100)

Item and Specification	Weight	Index Numbers			% Change in Aug 2022 over			
		Aug 22	Jul 22	Aug 21	Jul 2022	Aug 2021		
General	100.0000	239.87	232.57	169.82	+	3.14	+	41.25
Agriculture Forestry & Fisher	25.7674	222.12	209.28	172.52	+	6.14	+	28.75
001 Wheat	0.6297	220.32	222.71	153.47	-	1.07	+	43.56
002 Maize	0.6764	213.16	217.63	161.64	-	2.05	+	31.87
003 Rice	2.4413	217.56	214.90	176.25	+	1.24	+	23.44
004 Sorghum / Jowar	0.0214	230.73	224.26	185.54	+	2.89	+	24.36
005 Millet / Bajra	0.0374	203.88	212.19	240.38	-	3.92	-	15.18
006 Vegetables	1.2441	282.73	214.26	188.86	+	31.96	+	49.70
007 Fresh Fruits	1.5144	180.52	198.99	145.70	-	9.28	+	23.90
008 Dry Fruits	0.2478	153.37	148.60	138.84	+	3.21	+	10.47
009 Cotton Seeds	1.1511	160.03	161.18	141.14	-	0.71	+	13.38
010 Other Oil Seeds	0.0722	284.86	282.37	211.46	+	0.88	+	34.71
011 Edible Roots / Potatoes	0.2540	277.52	262.22	238.18	+	5.83	+	16.52
012 Stimulant & Spice Crops	0.1634	237.92	209.80	294.59	+	13.40	-	19.24
013 Pulses	0.4901	223.11	207.38	128.05	+	7.59	+	74.24
014 Sugar Crops	1.0725	167.32	157.93	139.03	+	5.95	+	20.35
015 Fibre Crops	5.3169	345.94	304.62	256.92	+	13.56	+	34.65
016 Unmanufactured Tobacco	0.0742	272.57	273.77	239.24	-	0.44	+	13.93
017 Poultry	0.5633	169.00	190.90	103.23	-	11.47	+	63.71
018 Raw Milk from Bovine Animals	7.0279	177.65	173.64	139.65	+	2.31	+	27.21
019 Eggs	0.5034	239.74	222.19	176.35	+	7.90	+	35.95
020 Raw Animal Materials / Wool	0.0351	110.09	109.44	106.95	+	0.59	+	2.94
021 Hides, Skins & Fur Skins, Raw	0.4834	45.16	45.00	33.88	+	0.36	+	33.29
022 Fuel Wood in Logs	0.0179	132.23	132.23	127.84	+	0.00	+	3.43
023 Fish Live Fresh or Chilled	1.7295	161.14	160.45	158.03	+	0.43	+	1.97
Ores/Minerals, Elec., Gas & W	12.0069	250.75	214.49	169.35	+	16.91	+	48.07
024 Coal not Agglomerated	0.7508	135.98	135.98	75.79	+	0.00	+	79.42
025 Natural Gas Liquefied	5.7065	211.39	210.10	207.37	+	0.61	+	1.94
026 Salt & Pure Sodium Chloride	0.0584	206.07	205.81	169.23	+	0.13	+	21.77
027 Electrical Energy	5.4912	307.82	229.88	142.64	+	33.90	+	115.8
Food, Beverages, Tobacco, Textil	31.1122	203.25	199.50	163.47	+	1.88	+	24.33
Food Products, Beverages &	20.0718	201.27	198.74	159.78	+	1.27	+	25.97
028 Meat of Animals	3.4559	214.69	212.66	180.57	+	0.95	+	18.90
029 Vegetables & Fruit Juice	0.0058	144.75	144.21	123.20	+	0.37	+	17.49
030 Dried Fruits & Nuts	0.1733	199.35	196.85	177.03	+	1.27	+	12.61
031 Fruit Juices	0.3880	147.35	146.22	131.77	+	0.77	+	11.82
032 Vegetable Oils Refined	1.9242	263.04	261.93	170.89	+	0.42	+	53.92
033 Vegetable Ghee	1.5632	359.03	362.84	208.96	-	1.05	+	71.82
034 Oil Cakes	0.9611	207.30	210.10	159.32	-	1.33	+	30.12
035 Processed Liquid Milk	4.4437	173.28	163.75	143.51	+	5.82	+	20.74
036 Milk & Cream in Solid Form	0.0316	172.20	172.11	135.88	+	0.05	+	26.73
037 Ice Cream	0.0047	159.08	148.21	147.94	+	7.33	+	7.53
038 Dairy Products N.E.C	0.0117	161.09	159.90	139.38	+	0.74	+	15.58
039 Wheat Flour	2.3034	193.73	193.76	152.32	-	0.02	+	27.19
040 Other Cereal Flour	0.0604	189.36	176.09	124.24	+	7.54	+	52.41
041 Sugar Refined	1.7975	144.63	145.23	169.42	-	0.41	-	14.63
042 Chocolate	0.0139	96.27	90.05	89.03	+	6.91	+	8.13
043 Sugar Confectionary	0.0738	202.19	189.30	187.66	+	6.81	+	7.74
044 Coffee & Tea	0.7303	166.24	159.65	130.00	+	4.13	+	27.88
045 Spices	0.1449	206.10	204.02	342.23	+	1.02	-	39.78
046 Other Food Products	0.0336	123.82	121.28	119.35	+	2.09	+	3.75
047 Mineral Water	0.0207	157.06	152.28	125.24	+	3.14	+	25.41
048 Beverages	0.6303	148.68	147.36	131.61	+	0.90	+	12.97
049 Tobacco Products	1.2998	134.10	134.10	104.23	+	0.00	+	28.66
Textiles & Apparels	10.3289	211.23	204.82	173.51	+	3.13	+	21.74
050 Cotton Yarn	5.2491	239.61	239.61	203.51	+	0.00	+	17.74
051 Nylon Yarn	0.1719	95.24	95.24	95.24	+	0.00	+	0.00
052 Blended Yarn	0.1689	148.12	148.12	129.30	+	0.00	+	14.56
053 Woven Fabrics	0.0128	185.47	174.73	161.21	+	6.15	+	15.05
054 Cotton Fabrics	0.6343	194.39	184.10	170.13	+	5.59	+	14.26
055 Other Fabrics	1.1016	175.24	156.33	126.38	+	12.10	+	38.66
056 Silk & Rayon Fabrics	0.7350	229.46	199.72	168.50	+	14.89	+	36.18
057 Towels	0.1235	158.60	158.38	141.44	+	0.14	+	12.13
058 Blankets	0.0029	105.56	105.56	104.95	+	0.00	+	0.58
059 Bed Sheets	0.0913	133.90	133.90	127.88	+	0.00	+	4.71

Annexure C: Wholesale Price Indices by Major Groups & Commodities

(2015-16=100)

Item and Specification	Weight	Index Numbers			% Change in Aug 2022 over		
		Aug 22	Jul 22	Aug 21	Jul 2022	Aug 2021	
060 Quilts	0.0019	131.51	131.51	121.31	+	0.00	+ 8.41
061 Woolen Carpets	0.0383	146.63	146.63	137.01	+	0.00	+ 7.02
062 Synthetic Carpets	0.0566	131.66	131.66	117.09	+	0.00	+ 12.44
063 Hosiery Products	0.8832	162.49	159.49	139.18	+	1.88	+ 16.75
064 Readymade Garments	1.0576	195.04	181.68	140.16	+	7.35	+ 39.16
Leather Products	0.7115	143.51	143.51	122.09	+	0.00	+ 17.54
065 Leather Without Hair	0.2973	126.46	126.46	112.56	+	0.00	+ 12.35
066 Other Leather N.E.C	0.2567	119.76	119.76	114.96	+	0.00	+ 4.18
067 Footwear's	0.1575	214.40	214.40	151.69	+	0.00	+ 41.34
Other Transportable Goods	22.3979	313.08	322.51	176.15	-	2.92	+ 77.73
068 Timber	0.0165	189.21	185.19	157.07	+	2.17	+ 20.46
069 Printing Paper	0.4279	158.26	130.70	130.70	+	21.09	+ 21.09
070 Hard Board	0.1579	146.50	146.50	146.50	+	0.00	+ 0.00
071 Motor Spirit	1.6268	326.21	342.32	168.95	-	4.71	+ <u>93.08</u>
072 Diesel Oil	5.4849	361.39	389.82	165.52	-	7.29	+ <u>118.3</u>
073 Kerosene Oil	0.2151	392.70	419.08	172.39	-	6.29	+ <u>127.8</u>
074 Furnace Oil	3.2664	622.96	643.12	338.70	-	3.13	+ <u>83.93</u>
075 Mobil Oil	0.7114	179.94	168.46	131.01	+	6.81	+ 37.35
076 Chemicals	1.7720	269.24	261.95	150.36	+	2.78	+ <u>79.06</u>
077 Dyeing Material	0.1539	146.16	146.16	146.16	+	0.00	+ 0.00
078 Fertilizers	2.8657	210.00	206.96	115.96	+	1.47	+ <u>81.10</u>
079 Pesticides	0.2763	153.09	153.09	146.51	+	0.00	+ 4.49
080 Insecticides	0.1276	111.49	111.49	111.49	+	0.00	+ 0.00
081 Paints & Varnishes	0.1916	189.86	189.86	141.16	+	0.00	+ 34.50
082 Medicines	1.1428	172.64	172.41	151.97	+	0.13	+ 13.60
083 Soaps & Detergents	0.8168	149.31	145.27	117.70	+	2.78	+ 26.86
084 Auto Tires	0.2703	179.14	169.32	127.04	+	5.80	+ 41.01
085 Plastic Products	0.4550	131.71	127.95	119.91	+	2.94	+ 9.84
086 Glass sheets	0.2089	230.52	226.78	148.06	+	1.65	+ <u>55.69</u>
087 Other Glass Articles	0.1635	158.06	158.06	150.08	+	0.00	+ 5.32
088 Ceramics & Sanitary Fixture	0.0244	154.86	142.21	127.62	+	8.90	+ 21.34
089 Bricks, Blocks & Tiles	0.1566	162.77	158.15	136.28	+	2.92	+ 19.44
090 Cement	1.8145	199.11	204.16	134.16	-	2.47	+ 48.41
091 Bed Foam	0.0006	261.71	247.14	158.20	+	5.90	+ <u>65.43</u>
092 Matches	0.0505	1415.5	1415.5	1173.3	+	0.00	+ 20.65
Metal Product, Machinery & Eq	8.7156	219.95	213.23	168.82	+	3.15	+ 30.29
093 Steel Bar & Sheets	1.4615	296.51	300.47	230.68	-	1.32	+ 28.54
094 Pipe Fittings	0.0780	278.12	231.07	176.06	+	20.36	+ <u>57.97</u>
095 Steel Products	0.3879	141.48	141.48	134.30	+	0.00	+ 5.35
096 Engines & Motors	0.0046	117.67	117.67	107.29	+	0.00	+ 9.67
097 Vacuum Pumps	0.0155	107.56	107.56	107.56	+	0.00	+ 0.00
098 Air Conditioners	0.0049	187.66	185.90	128.74	+	0.95	+ 45.77
099 Cultivators	0.0551	174.49	174.49	103.75	+	0.00	+ <u>68.18</u>
100 Chuff Cutter	0.1293	337.83	304.69	121.43	+	10.88	+ <u>178.2</u>
101 Tractors	0.0028	206.24	185.77	135.63	+	11.02	+ <u>52.06</u>
102 Lathe Machines	0.0525	364.02	334.37	232.65	+	8.87	+ <u>56.47</u>
103 Concrete Mixture	0.0107	239.71	223.42	100.00	+	7.29	+ <u>139.7</u>
104 Fridge, WashM, SewM, Fans, Iron	1.1645	182.46	180.65	163.03	+	1.00	+ 11.92
105 Electric Wires	0.0912	185.66	179.20	148.23	+	3.60	+ 25.25
106 Lighting Equipments	1.4431	189.30	183.89	131.51	+	2.94	+ 43.94
107 Radio & Television	0.1843	122.49	122.36	108.07	+	0.11	+ 13.34
108 Motor Vehicles	0.0244	205.44	190.09	156.48	+	8.08	+ 31.29
109 Motorcycles	0.2570	192.11	180.78	139.78	+	6.27	+ 37.44
110 Bicycles	3.3483	223.66	211.48	172.55	+	5.76	+ 29.62