



CONTRACEPTIVE PERFORMANCE REPORT

JANUARY - MARCH 2011



***GOVERNMENT OF PAKISTAN
STATISTICS DIVISION
FEDERAL BUREAU OF STATISTICS***

GENESIS OF THE REPORT

The Contraceptive Performance Report owes to continuous efforts of the following FBS Officers/Officials:

1. Dr. Bahrawar Jan, Deputy Director General
2. Ms. Rizwana Siddique, Chief Statistical Officer
3. Syed Adil Hashmi, Statistical Officer
4. Mr. Arshad Ahmad Khan, Research Supervisor
5. Mr. Mahmood-ul-Hasan, Statistical Investigator
6. Mr. Sarfraz Ahmad, Statistical Assistant
7. Mr. Muhammad Qadeer Anwar, Data Entry Operator

PREFACE

Federal Bureau of Statistics (FBS) is a prime official agency of Pakistan which is responsible for collection, compilation and dissemination of reliable and timely statistical information to the policy makers, planners and researchers. It publishes a variety of reports, based on primary and secondary data, especially on economics and social aspects of the country.

The Quarterly Contraceptive Performance Report January-March, 2011 encompasses the contraceptive performance at all service delivery points in the country. The Federal Bureau of Statistics (FBS) aims at ensuring nationwide coverage of Family Planning/Reproductive Health activities. The quarterly contraceptive performance report is an important intervention to gauge outlets-wise, sector-wise and method-wise contraceptive progress and observe the direction and track/trend for future Contraceptive Requirement and Distribution (CRD) in the country.

Above all, I am grateful to Provincial Population Welfare Departments (PPWDs), the District Population Welfare Office, Islamabad Capital Territory (ICT), Population Welfare Department Azad Jammu & Kashmir (AJK), Population Welfare Programme Gilgit-Baltistan(GB), Social Marketing of Contraceptive (SMC) and other stakeholders for their supports in this important input of contraceptive usage.

I hope, the user of the report would be able to learn about important facts on contraceptive activities and will assist in the field of population and development. Comments and suggestions for improvement of Contraceptive Performance Report would be highly appreciated.

Arif Mahmood Cheema
Director General
Federal Bureau of Statistics
Statistics Division
Government of Pakistan

CONTENTS

	Page No.
PREFACE	iii
CONTENTS	v
SUMMARY	vii
INTRODUCTION	1
Methodology	1
Concept and Definitions	2
Data Sources	3
RESULTS AND DISCUSSION	4
1. Province -wise Comparison in terms of Couple Years of Protection	4
2. Outlets-wise Comparison in terms of Couple Year of Protection	4
3. Method-wise Comparison of Contraceptives Performance	5
4. Province/Sector and Method-wise Comparison of Contraceptives Performance with Previous quarter	6
5. Outlets/ Province/Sector-wise Comparison of Performance of Contraceptives Delivery Services with Previous quarter:	6-8
<i>i. Family Welfare Centers (FWCs)</i>	6
<i>ii. Reproductive Health Services Centers (RHS-A)</i>	7
<i>iii. Reproductive Health Services Centers (RHS-B)</i>	7
<i>iv. Mobile Service Units (MSUs)</i>	7
<i>v. Provincial Line Departments (PLDs) including outlets of Health Department</i>	7
<i>vi. Registered Medical Practitioners (RMPs)</i>	7
<i>vii. Hakeems and Homoeopaths (H&H)</i>	8
<i>viii. Male Mobilizer</i>	8
<i>ix. Non-Governmental Organization (NGO)-FPAP</i>	8
<i>x. Azad Jammu & Kashmir (AJK)</i>	8
<i>xi. Gilgit – Baltistan (GB)</i>	8
<i>xii. Federally Administered Tribal Areas(FATA)</i>	
6. Method and Outlets- wise Average performance	9
<i>i. Average performance per FWC by method</i>	9
<i>ii. Average performance per RHS-A by method</i>	10
<i>iii. Average performance per MSU by method</i>	11
7. Percentage Distribution of Total CYP by Province/Sector During the Current Quarter	12
8. Percentage Distribution of Total CYP by Service Outlets During the Current Quarter	12
9. Percentage Distribution of Total CYP of Contraceptive Performance by Methods during the Current Quarter	12
10. Province-Wise Family Planning and Mother & Child Health (MCH) Services Delivery	12
STATISTICAL TABLES	13-21

SUMMARY

The salient feature of the report based on the data of Population Welfare activities in the country are given as under:-

- Ø The overall, Contraceptive Performance for the quarter of January - March 2011 in terms of Couple Years of Protection (CYP) by comparing with the corresponding quarter of the last year (January - March 2010), the performance has decreased by 17.1%, when the current quarter performance compared with the previous quarter (October - December 2010) the fall off is 10.0%.

- Ø The Province-wise Contraceptive performance of current quarter when compared with the corresponding quarter of 2010, it reflects an increase of 6.7% in Khyber Pakhtunkhwa and decline in three provinces namely, Punjab, Sindh, and Balochistan by 18.3%, 11.8% and 7.2% respectively while in Islamabad the drop in Contraceptive performance is recorded 25.9%. The comparison of the current quarter with the corresponding quarter of 2010, FATA depicts an increase by 19.1%. Whereas AJK and GB show a decrease of 27.5% and 4.9% respectively. On the other hand when contraceptive performance in this quarter (January -March,2011) was compared with previous quarter (October - December 2010), it has shown an increase in Punjab by 3.0% and Khyber Pakhtunkhwa by 10.2 while in Sindh, Balochistan and federal district Islamabad showed decrease by 2.6%, 2.0% and 17.4% respectively.

- Ø Methods-wise Contraceptive Performance, based on CYP, of the current quarter when compared with the same quarter of the previous year (2010), shows an increase in Condoms by 6.9% and in Oral Pills by 2.0%, whereas a decreasing trend has been observed in Contraceptive Surgery, IUD and Injactable by 34.0%, 15.9% and 12.9% respectively.

INTRODUCTION

The rapid population growth is the main obstacle to a country's social progress, economic stability, health, environment, law & order and food security. Pakistan having the highest population growth is the sixth most populous country in the world. Moreover, Pakistan is making the third highest annual net addition to the global population after India and China. The country's high fertility rate is a major contributor to this situation since mortality rate has been fairly stable over the years.

The country is under heavy stress due to rapid growth in population. Therefore, an immediate action is required to curb the increasing trend of population. The provision of quality contraceptives and its easy access will help to reduce the Total Fertility Rate and consequently to control the population. This report is on the usage of contraceptives that are provided in the market from the government as well as from private outlets.

The main objectives of the report are as following:

- To assess the province/sector-wise, methods-wise and outlets-wise contraceptives performance.
- To estimate annual contraceptives requirements and their distribution in the country.
- To examine province/sector-wise, methods-wise and outlets-wise contraceptives growth during the current quarter.
- To calculate Contraceptive Prevalence Rate (CPR) to assess the birth control strategy of country.

Methodology

As past practice in the Ministry of Population Welfare, the Federal Bureau of Statistics collects the contraceptive performance data on monthly basis by post, by fax and through e-mail from the Provincial Population Welfare Departments (PPWDs); Population Welfare Departments AJK, GB, FATA; District Population Welfare Office, Islamabad (ICT); Family Planning Association of Pakistan (FPAP); Marie Stopes Society of Pakistan (NGO); Social Marketing of Contraceptive (SMC); Regional Training Institutes (RTIs) and Public-private Partnership (PPP)/Target Groups Institutes (TGIs). After editing and coding, the data is being entered on monthly basis and then processed according to tabulation plan at Data Processing Centre of FBS. At the end of quarter, monthly data is consolidated into the quarterly data. On the basis of quarterly data, contraceptive performance report is prepared. In this report, the

percentage change in the quarter under report is compared with the corresponding quarter of last year as well as with the previous quarter of the current year. This report on Contraceptive Performance is for the quarter January -March, 2011.

Concepts and Definitions

In this report, the following concepts and definitions have been used:

Family Welfare Centre (FWC): The FWC is the cornerstone of Pakistan's Population Welfare Programme. They constitute the most extensive institutional network in the country for promoting and delivering family planning services in both urban and rural areas. As a static facility, it serves a population of about 7000; while operating through its satellites clinics and outreach facility, an FWC covers a population of about 12000.

Reproductive Health Services (RHS) Centres : The Reproductive Health Service Centers are the major clinical component of the Pakistan's Population Welfare Programme. They provide services through RHS-A Centers and RHS-B Centers.

The RHS-A centers are hospital-based service delivery units in the government sector. They provide contraceptive surgery facilities for women and men with safe and effective backup medical support. The RHS-B centres are Well-established hospitals and clinics in the private sector. These have fully-equipped operating facilities (operation theatre facilities, beds for admission, post-operative care, sterilization and emergency resuscitation equipment, etc.) and trained work force.

Mobile Service Units (MSUs): The MSUs are the flagship of the Population Welfare Programme. They provide a package of quality Family Planning/Reproductive Health (FP/RH) services to the people of those remote villages and hamlets where no other health facility exists. The MSUs operate through specially-designed vehicles which carry with-in them all the facilities of a mini clinic ensuring complete privacy for simple gynecological procedures.

Regional Training Institutes (RTIs): The RTIs provide skill-based training in FP/RH for all categories of health care providers i.e. Doctors, medical students, nurses, student nurses, lady health visitors and other paramedics. The RTIs also undertake activities focused on raising the awareness about the level of hakims, homeopaths, community health workers, teachers and college students.

Provincial Line Departments (PLDs): The Health outlets of PLDs have been involved in the Population Welfare Programme for provision of services in order to improve access and expand coverage of facilities for promotion of family planning.

Couple Years of Protection (CYP): The term Couple Years of Protection (CYP) is one of several commonly used indicators to assess international family planning efforts. It is the protection provided by contraceptive methods during one-year period, based upon the volume of all contraceptives sold or distributed free of charge to clients during that period. It is also an indirect estimator of birth control.

CONVERSION FORMULA FOR CONTRACEPTIVE USAGE INTO COUPLE YEARS OF PROTECTION (CYP)		
CONDOM	NO. OF UNITS / 144	= 1 CYP
ORAL PILL	NO. OF CYCLES / 15	= 1 CYP
IUD	NO. OF INSERTIONS x 3.5	= 1 CYP
INJECTABLE	NO. OF VIALS / 5	= 1 CYP
CONTRACEPTIVE SURGERY (CS)	NO. OF CASES x 12.5	= 1 CYP

Data Sources

The Contraceptive Performance Report is prepared on the basis of data received from the following sources:

- Provincial Population Welfare Departments (PPWDs);
- Population Welfare Departments AJK, GB and FATA;
- The District Population Welfare Office, ICT, Islamabad
- Family Planning Association of Pakistan (FPAP) ;
- Marie Stopes Society of Pakistan (NGO);
- Social Marketing of Contraceptive (SMC);
- Regional Training Institutes (RTIs) and
- Public-private Partnership(PPP)/Target Groups Institutes(TGIs)

RESULTS AND DISCUSSION

1. Province-wise Comparison in terms of Couple Years of Protection

The province/sector-wise comparison of contraceptive performance during current quarter, (January- March, 2011) in terms of Couple Year of Protection (CYP) has been made with corresponding quarter of the previous year, and also with the previous quarter (October – December, 2010) by calculating % age change for the respective period. Table-1 given at the end of report is referred, in this regard.

At National level a decrease of 17.1% has been observed for all program and non-program outlets during the current quarter (January - March 2011) as compared to corresponding quarter of 2010. However when performance was compared with the previous quarter (October – December, 2010), it reflected a decrease of 10.0%.

At provincial level, an increase by 6.7% is observed for Khyber Pakhtunkhwa during the current quarter as compared to corresponding quarter of 2010, whereas a decrease in three provinces namely, Punjab, Sindh, and Balochistan by 18.3%, 11.8% and 7.2% respectively, is observed. When compared with the previous quarter Khyber Pakhtunkhwa and Punjab showed an increase by 10.2% and 3.0% respectively and decrease is depicted in Sindh by 2.6%, and Balochistan by 2.0%.

For Islamabad a decrease of 25.9% over the corresponding quarter of the last year and a decrease of 17.4% over previous quarter has been recorded for January - March 2011.

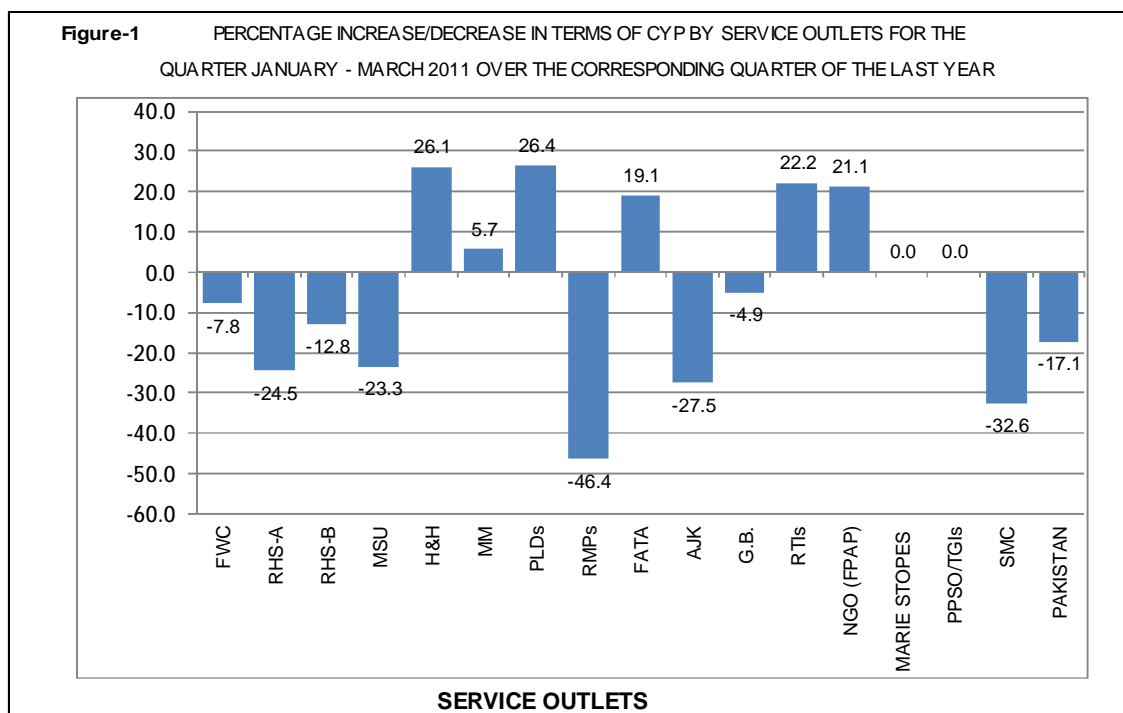
An increase of 19.1% has been observed for FATA in the current quarter as compared to corresponding quarter of the last year and increase of 31.8% over previous quarter.

A decline of 27.5% and 4.9% was recorded in current quarter with respect to corresponding quarter of 2010 for AJK and Gilgit-Baltistan respectively.

2. Outlets-wise Comparison in terms of Couple year of Protection

The contribution of service outlets towards CYP during January - March 2011 when compared with corresponding quarter of last year, showed an increase of 26.4% in Provincial Line Departments (PLDs), 26.1% in Hakeem & Homoeopaths, 22.2% in Regional Training Institutes (RTIs) and 21.1% in Family Planning Association Of Pakistan (FPAP- NGOs), 19.1% in FATA and 5.7% in Male Mobilizers (MM), whereas a drop of 46.4% in Registered Medical Practitioners (RMPs), 32.6% in Social Marketing of Contraceptives (SMC), 24.5% in Reproductive Health Services-A Centers (RHS-A), 23.3% in Mobile Service Units (MSUs), 12.8% in RHS-B, and 7.8% in Family Welfare Centers (FWCs) is observed.

The outlets-wise service delivery performance when compared with the previous quarter of 2010 it showed an increase in PLDs, FATA, RTIs, RHS-A, H&H, MM, FWCs and MSU by 62.5%, 31.8%, 23.2%, 20.3%, 7.0%, 6.3%, 1.5% and 0.8% respectively. Whereas SMC, RHS-B, RMPs, GB, AJK and NGO-FPAP showed a decrease of 31.2% 25.5%, 21.2% 15.2%, 12.2% and 4.4% respectively. The details are given in Table-2 and graphical presentation of data is as under:



3. Method-wise Comparison of Contraceptives Performance

In absolute terms, the Contraceptive Performance of Program and Non-Program service outlets reported a sale of 43.931 million units of Condoms, 1.521 million cycles of Oral Pills, 0.282 million insertions of Internal Urine Devices (IUDs) and 0.760 million vials of Injectables. Also 34135 numbers of Contraceptive Surgery Cases were performed during the current quarter.

The method-wise analysis, in term of CYP, compared with the corresponding quarter of 2010 showed an increase of 6.9% in Condoms, 2.0% for Oral pills whereas decrease by 15.9% for IUDs, 12.9% for Injectables and 34.0% for Contraceptive Surgery cases. Performance compared with the previous quarter (October - December 2010) showed increase in Oral Pill by 13.0% and decreasing trend is observed in Contraceptives Surgeries , IUD, Condoms , and Injectables by 12.5% , 11.9%, 9.8% and 3.0% respectively. The details are shown in Table-3.

4. Province/Sector and Method-wise Comparison of Contraceptives Performance with previous quarter

In case of condoms, the Province/Sector-wise and Method-wise performance of current quarter when compared with the previous quarter showed increase in Punjab by 5.8%, Sindh by 11.8% , KPK by 10.3%, Balochistan by 5.7%, Islamabad by 10.4% and FATA by 5.2%. Whereas a decrease in AJK by 4.8%, GB by 13.0%, RTI s by 44.6%, SMC by 16.9% and in NGO (FPAP) by 12.1%. For Oral Pills increase in Punjab by 0.5%, Sindh by 3.6%, KPK by 2.1% and in Balochistan by 1.3%, Islamabad by 9.9%, FATA by 26.8%, AJK by 2.1%, GB by 0.9% and SMC by 31.8% has been witnessed, whereas decrease in RTIs by 14.4% and NGO(FPAP) by 21.4%. For IUDs, an increase in Punjab by 4.3%, KPK by 7.7%, AJK by 8.4%, RTIs by 27.1% and FATA by 40.8% and decrease in Sindh by 8.2%, Balochistan by 15.7%, Islamabad by 27.6%, GB by 22.4% and SMC by 45.1% has been observed. In case of Injectables an increase in Punjab by 1.7% Sindh by 5.3%, KPK by 4.9% , Balochistan by 0.2% and FATA by 7.0%, whereas decrease in Islamabad by 8.9%, AJK by 17.4%, GB by 7.8%, NGO-FPAP by 18.4% and SMC by 7.4% has been observed. When it comes to Contraceptives Surgery cases, an increase in Punjab by 0.2%, in KPK by 52.4%, Balochistan by 36.2% , NGO-FPAP by 7.0% and Islamabad by 0.9% whereas decrease in Sindh by 2.2% and AJK by 71.0% were witnessed. The details are reflected in Table-4.

5. Outlets/Province/Sector-wise Comparison of Contraceptives Performance for Delivery Services with previous quarter

The Outlets/ Province/Sector-wise Comparison of Performance of Contraceptives Delivery Services is depicting in Table-5. The details are as under:

(i) Family Welfare Centers (FWCs): The performance of FWCs during the current quarter compared with the previous quarter in terms of CYP has been positive at national level by 1.5 % . At provincial level, an increase is observed in Punjab by 1.5%, Khyber Pakhtunkhwa by 6.6% whereas decrease in Sindh by 2.2%, Balochistan by 11.3% and Islamabad by 11.8%. At national level FWCs have shown an increase in condoms by 6.8%, for Oral Pills by 1.6%, for IUDs by 0.7% and for Injectables by 3.4% .

(ii) Reproductive Health Services Centers (RHS-A): The performance of RHS-A centers during current quarter compared with the previous quarter in terms of CYP has been positive, at national level, by 20.3% and at provincial level in Punjab by 19.0%, Sindh by

15.5%, Khyber Pakhtunkhwa by 55.9% and Balochistan by 13.8%, whereas a decrease has been observed in Islamabad by 0.9%. At national level, the performance of RHS-A centers has shown an increase for Condom by 17.9%, Oral Pills by 6.9%, IUDs by 7.1%, Injectables by 2.1% and Contraceptive Surgery by 24.4%.

(iii) Reproductive Health Services Centres (RHS-B): The performance of RHS-B centers of the current quarter compared with the previous quarter in terms of CYP has decreased at national level by 25.5% and at provincial level increase is observed in Balochistan by 24.4% and Islamabad by 8.3%, whereas a decrease is watched in Punjab by 23.0%, Sindh by 30.8% and Khyber Pakhtunkhwa by 38.5%. At national level, the performance of RHS-B centers has shown an increase for Oral Pills by 86.3% and Injectables by 66.7%, whereas a decrease is observed in Condom by 33.2%, IUDs by 83.0% and Contraceptive Surgery by 23.9%.

(iv) Mobile Service Units (MSUs): The performance of MSUs of the current quarter compared with the previous quarter in terms of CYP has increased at national level by 0.8% and at provincial level in Punjab by 0.3% and Khyber Pakhtunkhwa by 10.4% whereas a decrease is observed in Sindh by 2.2% and Balochistan by 6.5%. At national level, the performance of MSUs has shown an increase for Condom by 12.1%, in Oral Pills by 3.9% and IUDs by 0.2% whereas decrease in Injectables by 1.4%.

(v) Provincial Line Departments (PLDs) including outlets of Health Department: An increase has been reported in terms of CYP at national level by 62.5% and at Provincial level, for Punjab by 75%, Khyber Pakhtunkhwa by 45.6% and Balochistan by 7.1%. Whereas a decrease in Sindh by 6.9% and Islamabad by 26.8%. In the method-wise analysis the performance has increased for Oral Pills by 25.9%, in IUDs by 78.6% and Injectables by 1.5% whereas decrease in Condoms by 19.5%.

(vi) Registered Medical Practitioners (RMPs): In terms of CYP, decrease has been observed in the performance of RMPs at national level by 21.2% and at provincial level, increase is shown in Sindh by 34.5% and Khyber Pakhtunkhwa by 31.2% whereas decline has been reported in Punjab by 25.8%, Balochistan by 2.0%, and Islamabad by 36.3%. The method-wise performance of RMPs for the current quarter has shown an increase at

national level for Condom by 4.9%, for Oral Pills 7.4% and for Injectables by 10.7% whereas a decrease in IUDs by 34.0%.

(vii) Hakeems and Homoeopaths (H&H): In terms of CYP, an increase has been observed in the performance of H&H at national level by 7.0% and at provincial level in Punjab by 5.0%, in Sindh by 17.7% and Balochistan by 10.0% whereas a decrease has been reported in Khyber Pakhtunkhwa by 3.0%. The method-wise performance of H&H for the current quarter has shown an increase at national level for Condom by 6.7% and Oral Pills by 2.3%.

(viii) Male Mobilizer: In terms of CYP, an increase has been observed in the performance of Male Mobilizer at national level by 6.3% and at provincial level, for Punjab by 6.6%, Sindh by 5.8%, Khyber Pakhtunkhwa by 6.9% , Balochistan by 3.6% and Islamabad by 0.6%. The method-wise performance of Male Mobilizer for the current quarter has shown an increase at national level for Condom by 10.6%, whereas a decrease for Oral Pills by 2.5%.

(ix) Non-Governmental Organization (NGO)-FPAP: The overall contraceptive performance has shown a decrease by 4.4% in terms of CYP for NGO (FPAP) compared with the previous quarter, whereas the method-wise performance, has shown an increase in Contraceptive Surgery by 7.0% and decrease has been observed in Condoms by 12.1%, for Oral Pills by 21.4%, IUD by 2.7% and injectable by 18.4%.

(x) Azad Jammu & Kashmir (AJK): The contraceptive performance during the current quarter for AJK has been decreased in terms of CYP by 12.2%. In the method-wise performance, an increase has been observed for Oral Pills by 2.1% and IUDs by 8.4% whereas a decrease has been reported for Condoms by 4.8%, Injectables by 17.4% and C.S. cases by 71.0%.

(xi) Gilgit – Baltistan (GB): A decrease of 15.2% has been reported in terms of CYP in GB. In method-wise analysis, an increase of 0.9% has been observed in Oral Pills, whereas a decrease has been reported for Condoms by 13.0%, IUDs by 22.4% and Injectables by 7.8%.

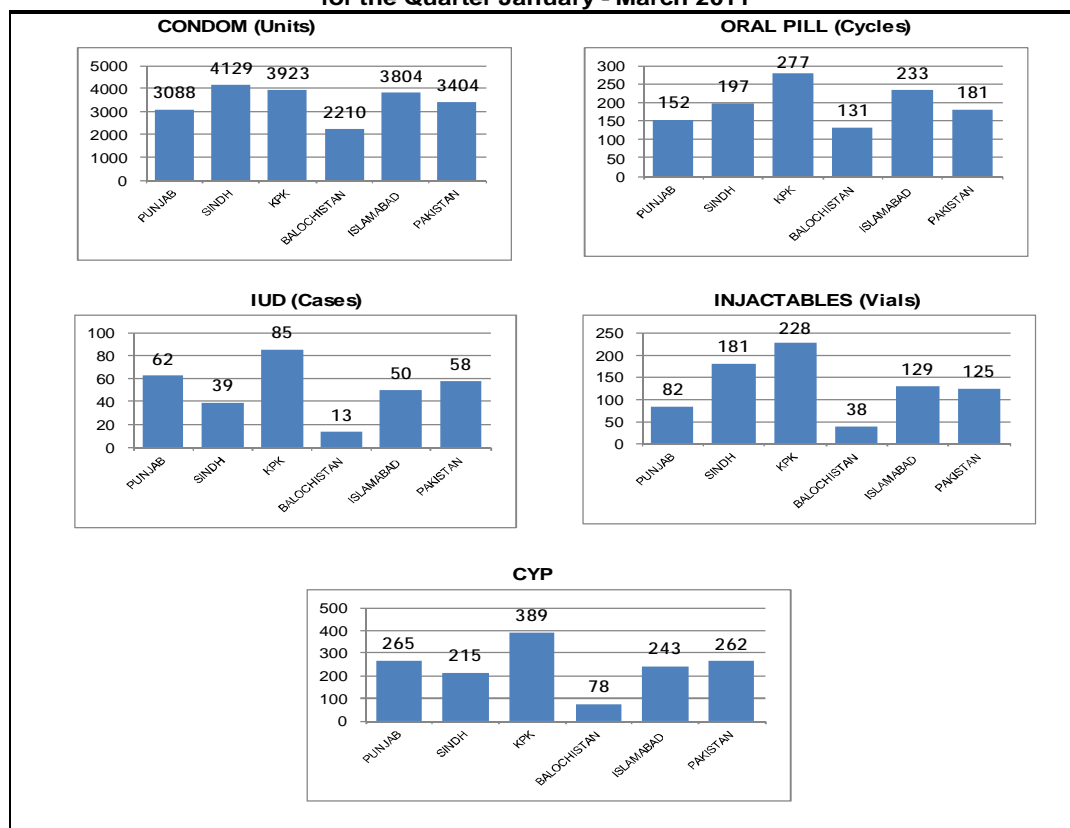
(xii) FATA: The contraceptive performance during the current quarter for FATA has been increased in terms of CYP by 31.8%. In the method-wise performance, an increase has been observed in Condoms by 5.2%, for Oral Pills by 26.8%, IUDs by 40.8% and for Injectables by 7.0%.

6. Method and Outlets-wise Average Performance

Method and Outlets-wise Average performance for the Federal and Provincial setups during the Current Quarter is given in Table-6. The details are as under:

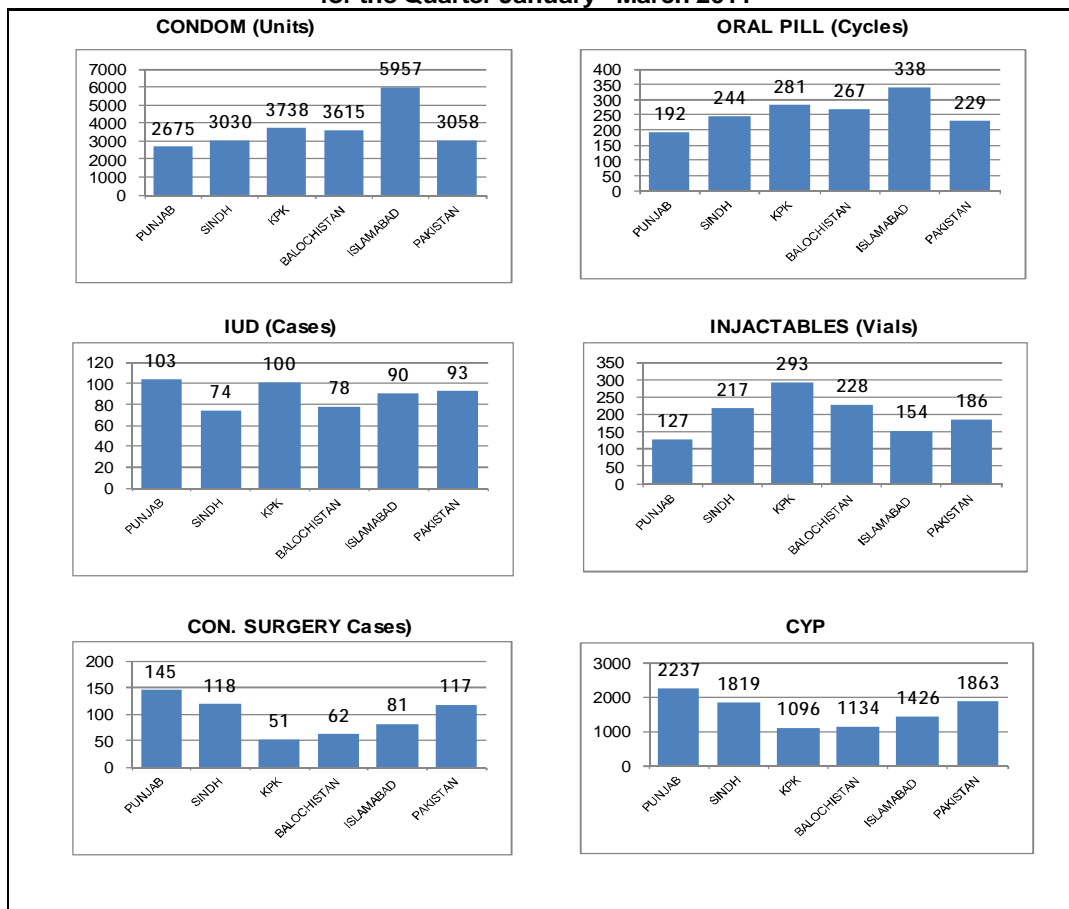
(i) **Average performance per FWC by method:** The highest average performance reported for Condoms per FWC is 4129 units sold in Sindh followed by 3923 in Khyber Pakhtunkhwa, 3804 in Islamabad, 3088 in Punjab and 2210 in Balochistan. The maximum numbers of 277 cycles of Oral Pills were dispensed by Khyber Pakhtunkhwa and the lowest 131 cycles were reported by FWCs of Balochistan. The highest insertions of IUDs i.e. 85 have been reported by FWCs of Khyber Pakhtunkhwa and the lowest figure reported is 13 by FWCs of Balochistan. By looking at the figure for injectables, it is seen that the maximum number has been reported by Khyber Pakhtunkhwa as 228 vials while the minimum number i.e. 38 has been observed in Balochistan. When these contraceptive performances are translated into CYP, it is observed that on average, the highest number of CYP i.e. 389 has been reported by Khyber Pakhtunkhwa while the lowest 78 for Balochistan. The graphical presentation of each contraceptive method dispensed per FWC is presented below:

Figure-2 Average Achievement Per FWC by Method and Province for the Quarter January - March 2011



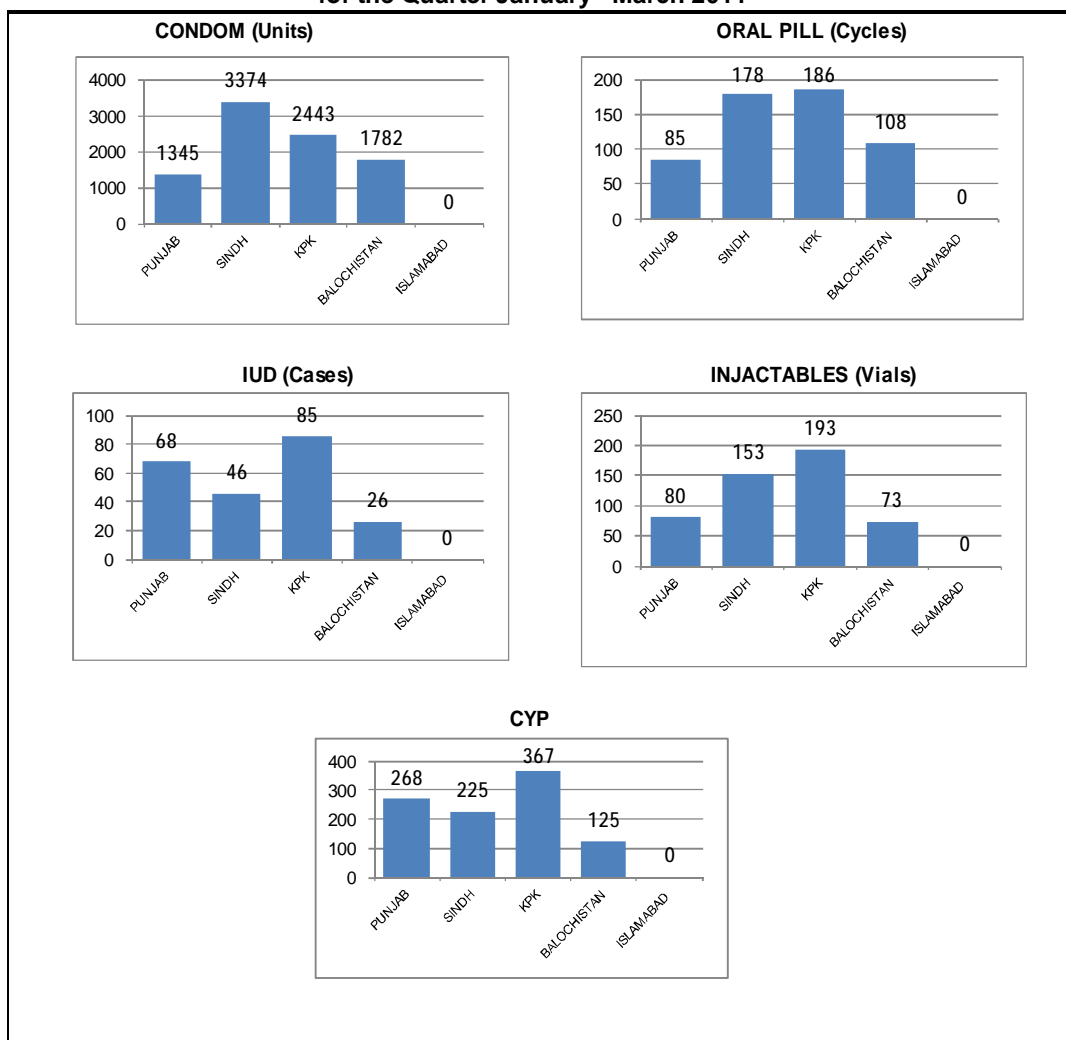
(ii) **Average performance per RHS-A by method:** The highest average achievement for Condoms per RHS-A is 5957 units sold in Islamabad followed by 3738 in Khyber Pakhtunkhwa, 3615 in Balochistan, , 3030 in Sindh, and 2675 in Punjab. The Reproductive Health Services-A Centres of Islamabad were able to dispense maximum number i.e. 338 cycles of Oral Pills as compared to the lowest 192 cycles of Oral Pills by RHS-A of Punjab. The highest insertions of IUDs 103 were reported by Punjab in comparison to lowest 74 insertions carried out by RHS-A in Sindh. The highest Injunctables i.e. 293 vials were reported by Khyber Pakhtunkhwa in comparison to 127 vials reported by RHS-A of Punjab. The highest Contraceptive Surgery cases were performed by Punjab i.e. 145 and the lowest i.e. 51 in Khyber Pakhtunkhwa. When the data of contraceptives performances is translated into CYP, it is observed that on average, the highest numbers of CYP have been calculated for Punjab i-e 2237 while the lowest 1096 appeared for Khyber Pakhtunkhwa. The graphical presentation of each contraceptive method recorded per RHS-A is presented below:

Figure-3 Average Achievement Per RHS-A by Method and Province for the Quarter January - March 2011



(iii) **Average performance per MSU by method:** The highest average reported performance for Condoms per MSU is 3374 in Sindh followed by 2443 in Khyber Pakhtunkhwa, 1782 in Balochistan and 1,345 in Punjab respectively. The Mobile Service Units of Khyber Pakhtunkhwa were able to dispense highest numbers of 186 cycles of Oral Pills as compared to the lowest 85 cycles of Oral Pills in Punjab. The highest reported insertions of IUDs i.e. 85 took place in KPK compared to the lowest 26 IUDs in Balochistan. The highest numbers of Injectables 193 vials reported by Khyber Pakhtunkhwa as compared to lowest 73 vials reported by MSUs of Balochistan. When the contraceptive performance data is translated into CYP, it is observed that on the average, the highest numbers of CYP i.e. 367 were calculated for Khyber Pakhtunkhwa while the lowest were 125 for Balochistan. The graphical presentation of each contraceptive method as reported by MSUs is presented below:

Figure-4 Average Achievement Per MSU by Method and Province for the Quarter January - March 2011



7. Percentage distribution of total CYP by Province/Sector during the current quarter

The percentage distribution of total CYP by Province/Sector during the current quarter reflected 37.56% in Punjab, 14.08% in Sindh, 10.97% in Khyber Pakhtunkhwa, 1.44% in Balochistan, 0.97% in Islamabad, 0.34% in FATA, 0.29% in AJK and 0.12 % in GB. The details are given in Table-7

8. Percentage distribution of total CYP by Service Outlets during the current quarter^(table-8)

The percentage distribution of total CYP by Service outlets during the current quarter was 35.85% in FWCs, 14.73% in RHS-A, 6.25% in RHS-B, 3.16% in MSUs, 1.90% in PLDs, 1.00% in RMPs. The details are presented in the Table-8.

9. Percentage distribution of Total CYP of Contraceptive Performance by Methods during the current quarter

The method-wise percentage contribution for Condom, Oral Pills, IUD, Injectables and Contraceptive Surgery in terms of total CYP has been 15.46%, 5.14%, 50.07%, 7.70% and 21.63% respectively. The details are given in Table-9

10. Province-wise Family Planning and Mother & Child Health (MCH) Services Delivery

The data indicates that during the quarter 1,192,856 clients availed Family Planning Services of various Contraceptive methods out of which the Family Welfare Centers provided the services to 118,247 numbers of clients for Pre-natal and 89,251 for Post-natal Care. Apart from these, FW Centers had provided treatment to 881,491 for General Ailments (Children + Adults). The details are given in Table-10.

STATISTICAL TABLES

LIST OF TABLES

TABLE-1	PROVINCE/SECTOR- WISE PERFORMANCE DURING JANUARY – MARCH, 2011 OVER THE PREVIOUS QUARTER AND WITH THE CORRESPONDING QUARTER OF THE LAST YEAR
TABLE-2	OUTLETS/SECTOR-WISE PERFORMANCE DURING JANUARY – MARCH, 2011 OVER THE PREVIOUS QUARTER AND CORRESPONDING QUARTER OF THE LAST YEAR.
TABLE-3	METHOD-WISE PERFORMANCE DURING JANUARY – MARCH, 2011 OVER THE PREVIOUS QUARTER AND CORRESPONDING QUARTER OF THE LAST YEAR.
TABLE-4	PROVINCE/SECTOR AND METHOD-WISE PERFORMANCE OF CONTRACEPTIVES DELIVERY SERVICES FOR THE QUARTER JANUARY – MARCH, 2011 OVER OCTOBER – DECEMBER, 2010.
TABLE-5	OUTLETS/SECTOR-WISE PERFORMANCE OF CONTRACEPTIVES FOR THE PERIOD JANUARY – MARCH, 2011 OVER OCTOBER-DECEMBER, 2010.
TABLE-6	OUTLETS/SECTOR-WISE AVERAGE PERFORMANCE OF CONTRACEPTIVES FOR THE PERIOD JANUARY – MARCH, 2011.
TABLE-7	PERCENTAGE DISTRIBUTION OF TOTAL CYP BY PROVINCE/SECTOR DURING JANUARY – MARCH, 2011.
TABLE-8	PERCENTAGE DISTRIBUTION OF TOTAL CYP BY SERVICE OUTLETS DURING JANUARY – MARCH, 2011.
TABLE-9	PERCENTAGE DISTRIBUTION OF TOTAL CYP BY METHODS DURING JANUARY – MARCH, 2011.
TABLE-10	PROVINCE-WISE FAMILY PLANNING AND MOTHER & CHILD HEALTH (MCH) SERVICES DELIVERY FOR THE PERIOD JANUARY – MARCH, 2011.

Table-1

**PROVINCE/SECTOR WISE PERFORMANCE DURING JANUARY - MARCH 2011 OVER THE
PREVIOUS QUARTER AND CORRESPONDING QUARTER OF THE LAST YEAR**

PROVINCE/SECTOR	COUPLE YEARS OF PROTECTION (CYP)			%age Change	
	JAN-MAR 2011	JAN-MAR 2010	Oct-Dec 2010	Jan-Mar 2011 Jan-Mar 2010	Jan-Mar 2011 Oct-Dec. 2010
PUNJAB	741,070	906,778	719,830	-18.3	3.0
SINDH	277,712	314,946	285,019	-11.8	-2.6
KHYBER PAKHTUNKHWA	216,336	202,661	196,244	6.7	10.2
BALUCHISTAN	28,438	30,660	29,008	-7.2	-2.0
ISLAMABAD	19,127	25,823	23,158	-25.9	-17.4
FATA	6,735	5,657	5,110	19.1	31.8
AJK	5,757	7,942	6,561	-27.5	-12.2
GILGIT BALTISTAN (GB)	2,318	2,438	2,733	-4.9	-15.2
REGIONAL TRAINING INSTITUTES (RTIs)	2,791	2,284	2,266	22.2	23.2
NON-GOVERNMENTAL ORGANIZATIONS (NGOs) (FPAP)	131,734	108,745	137,825	21.1	-4.4
MARIE STOPES SOCIETY OF PAKISTAN	20,400	-	28,752	-	-29.1
PUBLIC PRIVATE SECTOR ORGANIZATIONS (PPSO)	-	176	-	-	-
SOCIAL MARKETTING OF CONTRACEPTIVES (SMC)	520,478	772,085	756,281	-32.6	-31.2
PAKISTAN	1,972,896	2,380,195	2,192,786	-17.1	-10.0

Table-2

**OUTLET/SECTOR WISE PERFORMANCE DURING JANUARY - MARCH 2011 OVER THE
PREVIOUS QUARTER AND CORRESPONDING QUARTER OF THE LAST YEAR**

OUTLETS/SECTOR	COUPLE YEARS OF PROTECTION (CYP)			%age Change	
	JAN-MAR 2011	JAN-MAR 2010	Oct-Dec 2010	Jan-Mar 2011 Jan-Mar 2010	Jan-Mar 2011 Oct-Dec. 2010
FAMILY WELFARE CENTRES (FWCs)	707240	767261	696714	-7.8	1.5
REPRODUCTIVE HEALTH SERVICES-A CENTRES (RHS-A)	290599	385040	241642	-24.5	20.3
REPRODUCTIVE HEALTH SERVICES-B CENTRES (RHS-B)	123393	141544	165572	-12.8	-25.5
MOBILE SERVICE UNITS (MSU)	62370	81271	61895	-23.3	0.8
HAKHEEM & HOMOEOPATHS (H&H)	2074	1644	1938	26.1	7.0
MALE MOBLIZER (MM)	39724	37591	37358	5.7	6.3
PROVINCIAL LINE DEPARTMENTS (PLDs)	37552	29713	23103	26.4	62.5
REGISTER MEDICAL PRATICIONERS (RMPs)	19731	36803	25037	-46.4	-21.2
FATA	6735	5,657	5110	19.1	31.8
AJK	5757	7,942	6561	-27.5	-12.2
GILGIT BALTISTAN (GB)	2318	2,438	2733	-4.9	-15.2
REGIONAL TRAINING INSTITUTES (RTIs)	2791	2,284	2266	22.2	23.2
NON-GOVERNMENTAL ORGANIZATIONS (NGOs) (FPAP)	131734	108,745	137825	21.1	-4.4
MARIE STOPES SOCIETY OF PAKISTAN	20400	-	28752	-	-29.1
PUBLIC PRIVATE SECTOR ORGANIZATIONS (PPSO)	0	177	0	-	-
SOCIAL MARKETTING OF CONTRACEPTIVES (SMC)	520478	772,085	756281	-32.6	-31.2
PAKISTAN	1972896	2380195	2192787	-17.1	-10.0

Table-3

**METHOD WISE PERFORMANCE DURING JANUARY - MARCH 2011 OVER THE
PREVIOUS QUARTER AND CORRESPONDING QUARTER OF THE LAST YEAR**

METHOD	OVERALL PERFORMANCE			%age Change	
	JAN-MAR 2011	JAN-MAR 2010	Oct-Dec 2010	Jan-Mar 2011 Jan-Mar 2010	Jan-Mar 2011 Oct-Dec. 2010
CONDOM (Units)	43930729	41109460	48687473		
CYP	305075	285482	338107	6.9	-9.8
ORAL PILL (Cycles)	1520740	1490932	1345608		
CYP	101383	99395	89707	2.0	13.0
IUD (Insertions)	282240	335408	320215		
CYP	987840	1173928	1120753	-15.9	-11.9
INJECTABLE (Vials)	759557	872448	783281		
CYP	151911	174490	156656	-12.9	-3.0
CON. SURGERY (Cases)	34135	51752	39005		
CYP	426688	646900	487563	-34.0	-12.5
TOTAL CYP	1972896	2380195	2192786	-17.1	-10.0

Table-4

**PROVINCE/SECTOR AND METHOD WISE PERFORMANCE OF CONTRACEPTIVE DELIVERY SERVICES
FOR THE PERIOD JANUARY - MARCH 2011 OVER OCTOBER - DECEMBER, 2010**

PROVINCE/ SECTOR	CONDOM (Units)			ORAL PILL (Cycles)			IUD (Insertions)		
	JAN-MAR 2011	OCT-DEC 2010	% CHANGE	JAN-MAR 2011	OCT-DEC 2010	% CHANGE	JAN-MAR 2011	OCT-DEC 2010	% CHANGE
	2	3	4	5	6	7	8	9	10
PUNJAB	7,843,053	7,412,293	5.8	364,365	362,556	0.5	118,786	113,857	4.3
SINDH	3,699,775	3,308,347	11.8	202,281	195,309	3.6	30,209	32,895	-8.2
KHYBER PAKHTUNKHWA	2,548,037	2,309,816	10.3	172,431	168,835	2.1	41,321	38,363	7.7
BALUCHISTAN	651,901	616,780	5.7	42,291	41,733	1.3	3,724	4,418	-15.7
ISLAMABAD	199,963	181,169	10.4	11,331	10,307	9.9	3,060	4,228	-27.6
FATA	60,440	57,472	5.2	6,942	5,475	26.8	1,433	1,018	40.8
A.J.K.	63,255	66,428	-4.8	3,861	3,782	2.1	1,081	997	8.4
GILGIT BALTISTAN (GB)	8,673	9,968	-13.0	2,365	2,345	0.9	323	416	-22.4
RTIs	8,313	15,017	-44.6	632	738	-14.4	703	553	27.1
NGO (FPAP)	150,832	171,639	-12.1	22,783	28,980	-21.4	28,948	29,754	-2.7
MARIE STOPES SOCIETY	22,113	12,428	77.9	2,028	2,346	-13.6	5,665	8,061	-29.7
PPSO/TGIs	0	0	0.0	0	0	0.0	0	0	0.0
SMC	28,674,374	34,526,116	-16.9	689,430	523,202	31.8	46,987	85,655	-45.1
TOTAL	43,930,729	31,995,714	37.3	1,520,740	1,363,844	11.5	282,240	290,795	-2.9
PROVINCE/ SECTOR	INJECTABLE (Vials)			CON. SURGERY (Cases)			COUPLE YEARS OF PROTECTION (CYP)		
	JAN-MAR 2011	OCT-DEC 2010	% CHANGE	JAN-MAR 2011	OCT-DEC 2010	% CHANGE	JAN-MAR 2011	OCT-DEC 2010	% CHANGE
	11	12	13	14	15	16	17	18	19
PUNJAB	163,747	160,991	1.7	17,105	17,079	0.2	741,070	719,830	3.0
SINDH	129,949	123,396	5.3	8,545	8,737	-2.2	277,712	285,019	-2.6
KHYBER PAKHTUNKHWA	113,925	108,636	4.9	1,579	1,036	52.4	216,336	196,244	10.2
BALUCHISTAN	10,665	10,647	0.2	474	348	36.2	28,438	29,008	-2.0
ISLAMABAD	9,176	10,074	-8.9	355	352	0.9	19,127	23,158	-17.4
FATA	4,184	3,912	7.0	0	0		6,735	5,110	31.8
A.J.K.	4,574	5,538	-17.4	29	100	-71.0	5,757	6,561	-12.2
GILGIT BALTISTAN (GB)	4,846	5,255	-7.8	0	0	0.0	2,318	2,733	-15.2
RTIs	1,155	885	30.5	0	0	0.0	2,791	2,266	23.2
NGO (FPAP)	78,061	95,625	-18.4	979	915	7.0	131,734	137,825	-4.4
MARIE STOPES SOCIETY	1,417	1,480	-4.3	0	0		20,400	28,752	-29.1
PPSO/TGIs	0	0	0.0	0	0		0	0	0.0
SMC	237,858	256,842	-7.4	5,069	10,438	0.0	520,478	756,281	-31.2
TOTAL	759,557	728,490	4.3	34,135	31,856	7.2	1,972,896	2,192,786	-10.0

Table-5

**OUTLETS/SECTOR WISE PERFORMANCE OF CONTRACEPTIVE DELIVERY SERVICES
FOR THE PERIOD JANUARY - MARCH 2011 OVER OCTOBER- DECEMBER, 2010**

CATEGORY OF SERVICE OUTLETS/ PROVINCE	CONDOM (Units)			ORAL PILL (Cycles)			IUD (Insertions)		
	JAN-MAR 2011	OCT-DEC 2010	% CHANGE	JAN-MAR 2011	OCT-DEC 2010	% CHANGE	JAN-MAR 2011	OCT-DEC 2010	% CHANGE
1	2	3	4	5	6	7	8	9	10
FAMILY WELFARE CENTRES (FWC)									
PUNJAB	4632741	4458929	3.9	228566	226034	1.1	92957	91792	1.3
SINDH	2436118	2197272	10.9	115993	111277	4.2	23065	24780	-6.9
KHYBER PAKHTUNKHWA	1655427	1511815	9.5	117015	116387	0.5	35840	33460	7.1
BALUCHISTAN	342558	323474	5.9	20338	20913	-2.7	2035	2493	-18.4
ISLAMABAD	110319	98955	11.5	6749	6355	6.2	1453	1762	-17.5
PAKISTAN	9177163	8590445	6.8	488661	480966	1.6	155350	154287	0.7
REPRODUCTIVE HEALTH CENTRES-A (RHS-A)									
PUNJAB	197927	166668	18.8	14232	14341	-0.8	7655	6997	9.4
SINDH	142387	120695	18.0	11480	9914	15.8	3476	3389	2.6
KHYBER PAKHTUNKHWA	97179	77276	25.8	7318	6301	16.1	2611	2301	13.5
BALUCHISTAN	21688	22632	-4.2	1601	1844	-13.2	468	559	-16.3
ISLAMABAD	17872	17416	2.6	1015	937	8.3	270	275	-1.8
PAKISTAN	477053	404687	17.9	35646	33337	6.9	14480	13521	7.1
REPRODUCTIVE HEALTH CENTRES-B (RHS-B)									
PUNJAB	0	0	0.0	0	0	0.0	0	0	0.0
SINDH	140	2610	-94.6	1080	328	229.3	28	1048	-97.3
KHYBER PAKHTUNKHWA	968	798	21.3	134	186	-28.0	116	153	-24.2
BALUCHISTAN	70	144	-51.4	28	118	-76.3	18	58	-69.0
ISLAMABAD	2800	2400	16.7	150	115	30.4	60	45	33.3
PAKISTAN	3978	5952	-33.2	1392	747	86.3	222	1304	-83.0
MOBILE SERVICE UNITS (MSU)									
PUNJAB	157349	157174	0.1	9912	11021	-10.1	7913	7826	1.1
SINDH	236158	200773	17.6	12461	11200	11.3	3192	3399	-6.1
KHYBER PAKHTUNKHWA	73289	59190	23.8	5572	4903	13.6	2561	2310	10.9
BALUCHISTAN	60588	53205	13.9	3677	3311	11.1	884	992	-10.9
ISLAMABAD	0	0	0.0	0	0	0.0	0	0	0.0
PAKISTAN	527384	470342	12.1	31622	30435	3.9	14550	14527	0.2
PROVINCIAL LINE DEPARTMENTS (PLDs)									
PUNJAB	50680	73895	-31.4	20241	15853	27.7	8449	4380	92.9
SINDH	6068	5688	6.7	1265	1692	-25.2	155	120	29.2
KHYBER PAKHTUNKHWA	1231	1240	-0.7	149	119	25.2	123	83	48.2
BALUCHISTAN	14427	10759	34.1	1655	819	102.1	319	316	0.9
ISLAMABAD	5200	4882	6.5	300	276	8.7	180	267	-32.6
PAKISTAN	77606	96464	-19.5	23610	18759	25.9	9226	5166	78.6
REGISTER MEDICAL PRACTITIONERS (RMPs)									
PUNJAB	225788	223368	1.1	8475	8263	2.6	1812	2862	-36.7
SINDH	127830	119287	7.2	9506	8381	13.4	291	159	83.0
KHYBER PAKHTUNKHWA	23887	19513	22.4	1562	1517	3.0	70	56	25.0
BALUCHISTAN	55868	55284	1.1	2282	2495	-8.5	0	0	0.0
ISLAMABAD	26440	20958	26.2	3087	2535	21.8	1097	1879	-41.6
PAKISTAN	459813	438410	4.9	24912	23191	7.4	3270	4956	-34.0
HAKHEEMS & HOMOEOPATHS (H&H)									
PUNJAB	155451	147181	5.6	4773	4628	3.1	0	0	0.0
SINDH	37240	32648	14.1	2802	2657	5.5	0	0	0.0
KHYBER PAKHTUNKHWA	16030	16190	-1.0	984	1049	-6.2	0	0	0.0
BALUCHISTAN	2009	1404	43.1	144	175	-17.7	0	0	0.0
PAKISTAN	210730	197423	6.7	8703	8509	2.3	0	0	0.0
MALE MOBILIZER (MM)									
PUNJAB	2423117	2185078	10.9	78166	82416	-5.2	0	0	0.0
SINDH	713834	629374	13.4	47694	49860	-4.3	2	0	0.0
KHYBER PAKHTUNKHWA	680026	623794	9.0	39697	38373	3.5	0	0	0.0
BALUCHISTAN	154693	149878	3.2	12566	12058	4.2	0	0	0.0
ISLAMABAD	37332	36558	2.1	30	89	-66.3	0	0	0.0
PAKISTAN	4009002	3624682	10.6	178153	182796	-2.5	2	0	0.0
NON-GOVERNMENTAL ORGANIZATIONS (NGOs)									
MARIE STOPES SOCIETY	150832	171639	-12.1	22783	28980.0	-21.4	28948	29754	-2.7
PUBLIC PRIVATE SECTOR ORGANIZATIONS (PPSO)	22113	12428	77.9	2028	2346.0	-13.6	5665	8061	-29.7
SOCIAL MARKETTING OF CONTRACEPTIVES	0	0	0.0	0	0.0	0.0	0	0	0.0
A.J.K.	28674374	34526116	-16.9	689430	523202.0	31.8	46987	85655	-45.1
GILGIT BALTISTAN (GB)	63255	66428	-4.8	3861	3782.0	2.1	1081	997	8.4
REGIONAL TRAINING INSTITUTES (RTIs)	8673	9968	-13.0	2365	2345.0	0.9	323	416	-22.4
FATA	8313	15017	-44.6	632	738.0	-14.4	703	553	27.1
TOTAL ALL OUTLETS	43930729	48687473	-9.8	1520740	1345608	13.0	282240	320215	-11.9

Table-5

**OUTLETS/SECTOR WISE PERFORMANCE OF CONTRACEPTIVE DELIVERY SERVICES
FOR THE PERIOD JANUARY - MARCH 2011 OVER OCTOBER- DECEMBER 2010**

CATEGORY OF SERVICE OUTLETS/ PROVINCE	INJECTABLE (Vials)			CON. SURGERY (Cases)			COUPLE YEARS OF PROTECTION		
	JAN-MAR 2011	OCT-DEC 2010	% CHANGE	JAN-MAR 2011	OCT-DEC 2010	% CHANGE	JAN-MAR 2011	OCT-DEC 2010	% CHANGE
11	12	13	14	15	16	17	18	19	20
FAMILY WELFARE CENTRES (FWC)									
PUNJAB	123727	122197	1.3	0	0	0.0	397504	391745	1.5
SINDH	106590	100924	5.6	0	0	0.0	126696	129592	-2.2
KHYBER PAKHTUNKHWA	96154	92352	4.1	0	0	0.0	163968	153838	6.6
BALUCHISTAN	5831	5914	-1.4	0	0	0.0	12023	13549	-11.3
ISLAMABAD	3735	3561	4.9	0	0	0.0	7049	7990	-11.8
PAKISTAN	336037	324948	3.4	0	0	0.0	707240	696714	1.5
REPRODUCTIVE HEALTH CENTRES-A (RHS-A)									
PUNJAB	9413	9331	0.9	10763	8847	21.7	165536	139057	19.0
SINDH	10180	9942	2.4	5563	4693	18.5	85494	74011	15.5
KHYBER PAKHTUNKHWA	7607	7329	3.8	1333	624	113.6	28485	18276	55.9
BALUCHISTAN	1365	1335	2.2	371	278	33.5	6806	5979	13.8
ISLAMABAD	461	493	-6.5	244	246	-0.8	4279	4320	-0.9
PAKISTAN	29026	28430	2.1	18274	14688	24.4	290599	241642	20.3
REPRODUCTIVE HEALTH CENTRES-B (RHS-B)									
PUNJAB	0	0	0.0	6342	8232	-23.0	79275	102900	-23.0
SINDH	465	95	389.5	2982	4044	-26.3	37539	54277	-30.8
KHYBER PAKHTUNKHWA	225	268	-16.0	246	412	-40.3	3542	5757	-38.5
BALUCHISTAN	157	128	22.7	103	70	47.1	1384	1112	24.4
ISLAMABAD	130	95	36.8	111	106	4.7	1653	1526	8.3
PAKISTAN	977	586	66.7	9784	12864	-23.9	123393	165572	-25.5
MOBILE SERVICE UNITS (MSU)									
PUNJAB	9400	10107	-7.0	0	0	0.0	31329	31239	0.3
SINDH	10696	10475	2.1	0	0	0.0	15782	16132	-2.2
KHYBER PAKHTUNKHWA	5792	5732	1.0	0	0	0.0	11002	9969	10.4
BALUCHISTAN	2483	2460	0.9	0	0	0.0	4256	4554	-6.5
ISLAMABAD	0	0	0.0	0	0	0.0	0	0	0.0
PAKISTAN	28371	28774	-1.4	0	0	0.0	62370	61895	0.8
PROVINCIAL LINE DEPARTMENTS (PLDs)									
PUNJAB	13687	12695	7.8	0	0	0.0	34010	19439	75.0
SINDH	338	1096	-69.2	0	0	0.0	737	792	-6.9
KHYBER PAKHTUNKHWA	157	115	36.5	0	0	0.0	480	330	45.6
BALUCHISTAN	694	668	3.9	0	0	0.0	1466	1369	7.1
ISLAMABAD	864	932	-7.3	0	0	0.0	859	1173	-26.8
PAKISTAN	15740	15506	1.5	0	0	0.0	37552	23103	62.5
REGISTER MEDICAL PRACTITIONERS (RMPs)									
PUNJAB	7520	6661	12.9	0	0	0.0	9979	13451	-25.8
SINDH	1530	864	77.1	0	0	0.0	2846	2116	34.5
KHYBER PAKHTUNKHWA	3990	2840	40.5	0	0	0.0	1313	1001	31.2
BALUCHISTAN	135	142	-4.9	0	0	0.0	567	579	-2.0
ISLAMABAD	3986	4993	-20.2	0	0	0.0	5026	7890	-36.3
PAKISTAN	17161	15500	10.7	0	0	0.0	19731	25037	-21.2
HAKHEELS & HOMOEOPATHS (H&H)									
PUNJAB	0	0	0.0	0	0	0.0	1398	1331	5.0
SINDH	150	0	0.0	0	0	0.0	475	404	17.7
KHYBER PAKHTUNKHWA	0	0	0.0	0	0	0.0	177	182	-3.0
BALUCHISTAN	0	0	0.0	0	0	0.0	24	21	10.0
PAKISTAN	150	0	0.0	0	0	0.0	2074	1938	7.0
MALE MOBILIZER (MM)									
PUNJAB	0	0	0.0	0	0	0.0	22038	20669	6.6
SINDH	0	0	0.0	0	0	0.0	8144	7695	5.8
KHYBER PAKHTUNKHWA	0	0	0.0	0	0	0.0	7369	6890	6.9
BALUCHISTAN	0	0	0.0	0	0	0.0	1912	1845	3.6
ISLAMABAD	0	0	0.0	0	0	0.0	261	260	0.6
PAKISTAN	0	0	0.0	0	0	0.0	39724	37358	6.3
NON-GOVERNMENTAL ORGANIZATIONS (NGOs)									
MARIE STOPES SOCIETY	78061	95625	-18.4	979	915	7.0	131734	137825	-4.4
PUBLIC PRIVATE SECTOR ORGANIZATIONS (PPSO)	1417	1480	-4.3	0	0	0.0	20400	28752	-29.1
SOCIAL MARKETING OF CONTRACEPTIVES	0	0	0.0	0	0	0.0	0	0	0.0
A.J.K.	237858	256842	-7.4	5069	10438	-51.4	520478	756281	-31.2
GILGIT BALTIKISTAN (GB)	4574	5538	-17.4	29	100	-71.0	5757	6561	-12.2
REGIONAL TRAINING INSTITUTES (RTIs)	4846	5255	-7.8	0	0	0.0	2318	2733	-15.2
FATA	1155	885	30.5	0	0	0.0	2791	2266	23.2
TOTAL ALL OUTLETS	759557	783281	-3.0	34135	39005	-12.5	1972896	2192786	-10.0

Table-6

OUTLET WISE PERFORMANCE OF CONTRACEPTIVES FOR THE PERIOD JANUARY - MARCH 2011

Category of Service Outlets/Province/Sector	NO. OF OUTLETS	CONDOM (Units)		ORAL PILL (Cycles)		IUD (Insertions)		INJECTABLE (Vials)		CON SURGERY (Cases)		CYP	
		JAN - MAR 2011	Per Outlet	JAN - MAR 2011	Per Outlet	JAN - MAR 2011	Per Outlet	JAN - MAR 2011	Per Outlet	JAN - MAR 2011	Per Outlet	JAN - MAR 2011	Per Outlet
FWCs													
PUNJAB	1500	4632741	3088	228566	152	92957	62	123727	82	0	0	397504	265
SINDH	590	2436118	4129	115993	197	23065	39	106590	181	0	0	126696	215
KHYBER PAKHTUNKHWA	422	1655427	3923	117015	277	35840	85	96154	228	0	0	163968	389
BALUCHISTAN	155	342558	2210	20338	131	2035	13	5831	38	0	0	12023	78
ISLAMABAD	29	110319	3804	6749	233	1453	50	3735	129	0	0	7049	243
PAKISTAN	2696	9177163	3404	488661	181	155350	58	336037	125	0	0	707240	262
RHS-A CENTRES													
PUNJAB	74	197927	2675	14232	192	7655	103	9413	127	10763	145	165536	2237
SINDH	47	142387	3030	11480	244	3476	74	10180	217	5563	118	85494	1819
KHYBER PAKHTUNKHWA	26	97179	3738	7318	281	2611	100	7607	293	1333	51	28485	1096
BALUCHISTAN	6	21688	3615	1601	267	468	78	1365	228	371	62	6806	1134
ISLAMABAD	3	17872	5957	1015	338	270	90	461	154	244	81	4279	1426
PAKISTAN	156	477053	3058	35646	229	14480	93	29026	186	18274	117	290599	1863
MSUs													
PUNJAB	117	157349	1345	9912	85	7913	68	9400	80	0	0	31329	268
SINDH	70	236158	3374	12461	178	3192	46	10696	153	0	0	15782	225
KHYBER PAKHTUNKHWA	30	73289	2443	5572	186	2561	85	5792	193	0	0	11002	367
BALUCHISTAN	34	60588	1782	3677	108	884	26	2483	73	0	0	4256	125
ISLAMABAD	1	0	0	0	0	0	0	0	0	0	0	0	0
PAKISTAN	252	527384	2093	31622	125	14550	58	28371	113	0	0	62370	247

Table-7

PERCENTAGE DISTRIBUTION OF TOTAL CYP BY PROVINCE/SECTOR DURING JANUARY - MARCH 2011

PROVINCE/SECTOR	CYP	% AGE
PUNJAB	741,070	37.56
SINDH	277,712	14.08
KHYBER PAKHTUNKHWA	216,336	10.97
BALUCHISTAN	28,438	1.44
ISLAMABAD	19,127	0.97
FATA	6,735	0.34
AJK	5,757	0.29
G.B.	2,318	0.12
RTIs	2,791	0.14
NGO (FPAP)	131,734	6.68
MARIE STOPES	20,400	1.03
PPSO/TGIs	-	0.00
SMC	520,478	26.38
TOTAL	1,972,896	100.0

Table-8

PERCENTAGE DISTRIBUTION OF TOTAL CYP BY SERVICE OUTLET DURING JANUARY - MARCH 2011

OUTLETS/SECTOR	CYP	% AGE
FWC	707,240	35.85
RHS-A	290,599	14.73
RHS-B	123,393	6.25
MSU	62,370	3.16
PLDs	37,552	1.90
RMPs	19,731	1.00
H&H	2,074	0.11
MM	39,724	2.01
FATA	6,735	0.34
AJK	5,757	0.29
G.B.	2,318	0.12
RTIs	2,791	0.14
NGO (FPAP)	131,734	6.68
MARIE STOPES	20,400	1.03
PPSO/TGIs	-	0.00
SMC	520,478	26.38
TOTAL	1,972,896	100.00

Table-9 PERCENTAGE DISTRIBUTION OF TOTAL CYP BY METHODS DURING JANUARY - MARCH 2011

METHODS	CYP	%AGE
CONDOM (Units)	305,075	15.46
ORAL PILL (Cycles)	101,383	5.14
IUD (Insertions)	987,840	50.07
INJECTABLE (Vials)	151,911	7.70
CON. SURGERY (Cases)	426,688	21.63
TOTAL	1,972,896	100.00

Table-10 PROVINCE WISE FAMILY PLANNING AND MCH SERVICES DELIVERY FOR THE PERIOD JANUARY - MARCH 2011

PROVINCE/ FEDERAL TERRITORY	F.P CLIENTS	MOTHER CARE (Number of Clients)			GENERAL AILMENTS (Number of patients)			MCH	ALL
		Pre-Natal	Post-Natal	Total	Children	Adults	Total	CLIENTS	CLIENTS
								(Col 5+8)	(Col.2+5+8)
1	2	3	4	5	6	7	8	9	10
PUNJAB	476,410	46,272	26,427	72,699	65,527	233,759	299,286	371,985	848,395
SINDH	372,517	41,898	41,656	83,554	262,799	0	262,799	346,353	718,870
KHYBER PAKHTUNKHWA	255,772	19,717	12,755	32,472	45,320	143,533	188,853	221,325	477,097
BALUCHISTAN	30,233	3,760	3,180	6,940	4,114	39,270	43,384	50,324	80,557
ISLAMABAD	17,444	1,870	1,010	2,880	8,825	17,004	25,829	28,709	46,153
AJK	9,376	1,339	915	2,254	3,041	4,421	7,462	9,716	19,092
G.B.	10,870	1,277	984	2,261	3,592	16,121	19,713	21,974	32,844
FATA	20,234	2,114	2,324	4,438	2,383	31,782	34,165	38,603	58,837
TOTAL	1,192,856	118,247	89,251	207,498	395,601	485,890	881,491	1,088,989	2,281,845