

Quarterly Review of
FOREIGN TRADE
April-June, 2019

GOVERNMENT OF PAKISTAN
MINISTRY OF PLANNING DEVELOPMENT & REFORMS
PAKISTAN BUREAU OF STATISTICS

TRADE SUMMARY

April-June, 2019

EXPORTS

The total exports of Pakistan during Apr-Jun, 2019 amounted to Rs. 864,530.96 million showing an increase of 5.75% over Jan-Mar, 2019 and by 20.72% over Apr-Jun, 2018.

In terms of US dollar the export during Apr-Jun, 2019 amounted to \$ 5,887.18 million showing a decrease of 0.04% over Jan-Mar, 2019 and by 4.24% over Apr-Jun, 2018.

Export during Jul-Jun, 2019 totaled Rs. 3,128,229.73 million showing an increase of 22.43% over the corresponding period of last year. In terms of US dollars, exports stand at \$ 22,958.32 million showing a decrease of 1.09% over the corresponding period of last year.

IMPORTS

The total imports of Pakistan during Apr-Jun, 2019 amounted to Rs. 2,072,109.96 million showing an increase of 17.30% over Jan-Mar, 2019 and by 7.59% over Apr-Jun, 2018.

In terms of US dollar the import during Apr-Jun, 2019 amounted to \$ 14,083.50 million showing an increase of 10.66% over Jan-Mar, 2019 but decreased by 14.72% over Apr-Jun, 2018.

Import during Jul-Mar, 2019 totaled Rs. 7,443,253.26 million showing an increase of 11.18% over the corresponding period of last year. In terms of US dollars, exports stand at \$ 54,762.98 million showing a decrease of 9.92% over the corresponding period of last year.

TOTAL TRADE

The total trade of Pakistan during Apr-Jun, 2019 amounted to Rs. 2,936,640.92 million showing an increase of 13.65% over Jan-Mar, 2019 and by 11.15% over Apr-Jun, 2018.

In terms of US dollar the total trade during Apr-Jun, 2019 amounted to \$ 19,970.68 million showing an increase of 7.27% over Jan-Mar, 2019 but decreased by 11.87% over Apr-Jun, 2018.

Total trade during Jul-Jun, 2019 totaled Rs. 10,571,482.99 million showing an increase of 14.29% over the corresponding period of last year. In terms of US dollars, total trade stands at \$ 77,721.30 million showing a decrease of 7.48%.

BALANCE OF TRADE

Balance of trade in Apr-Jun, 2019 was unfavorable to Pakistan to the tune of 1,207,579.00 million in rupees equal to US \$ 8,196.32 million, whereas during the period of Jul-Jun, 2019 it was unfavorable to the tune of 4,315,023.53 million rupees equal to US \$ 31,804.66 million.

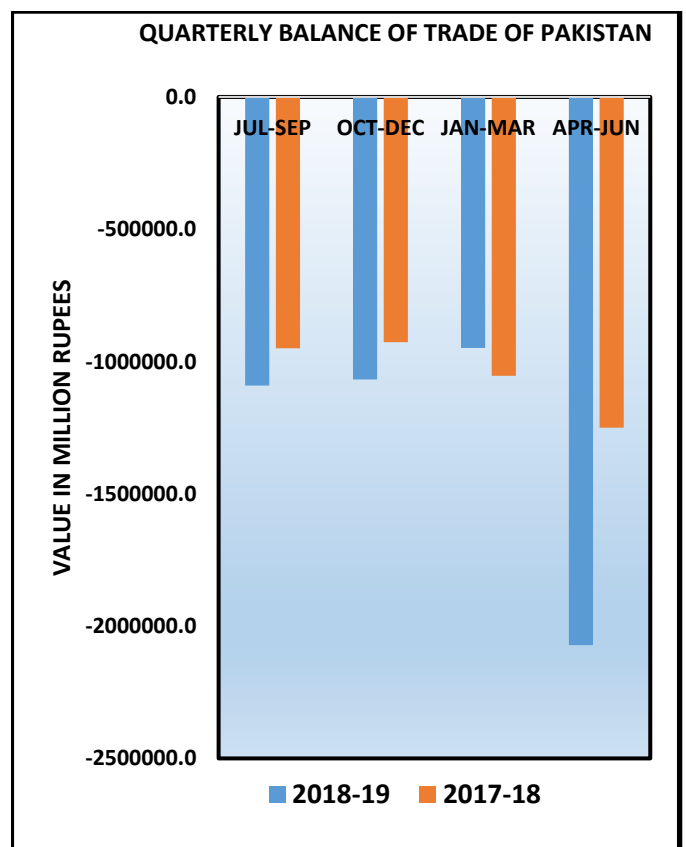
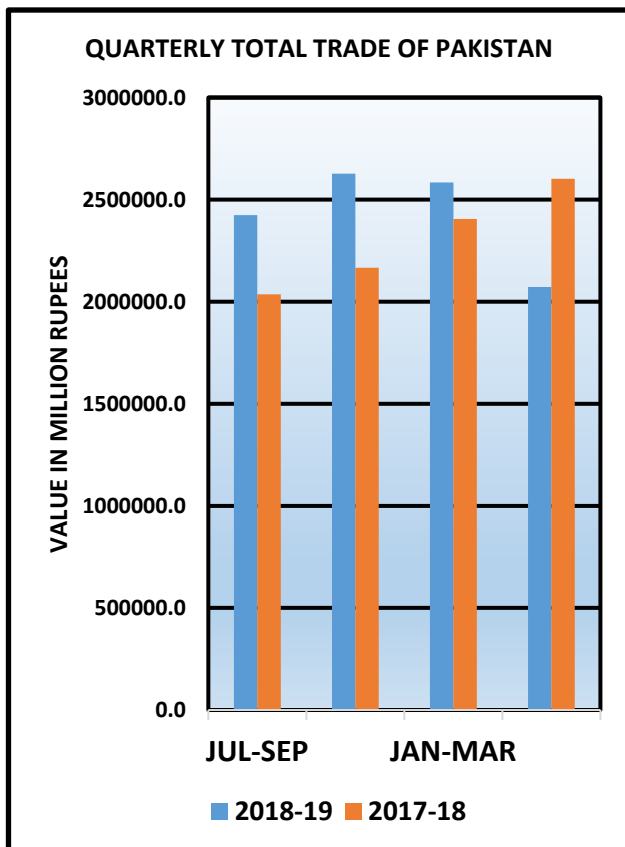
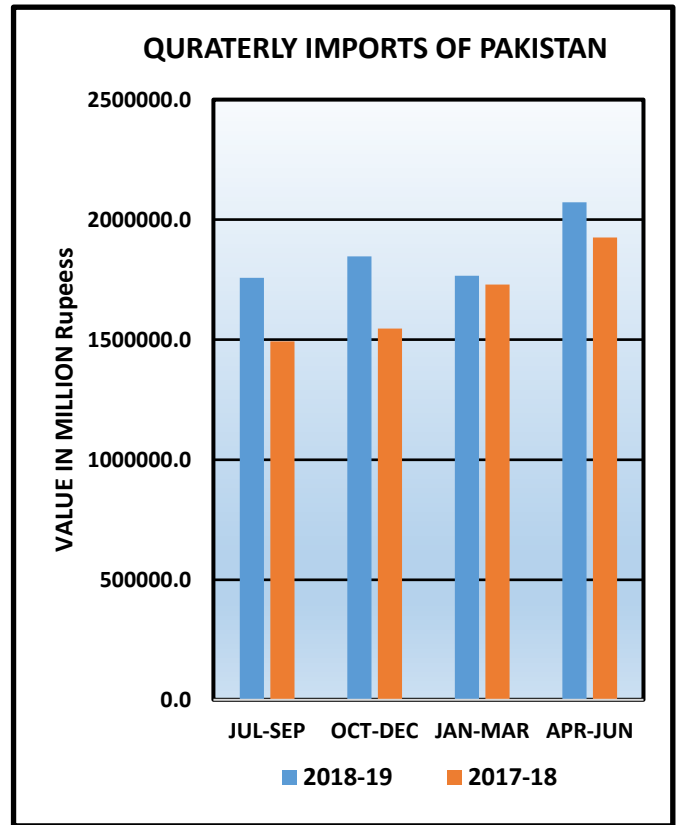
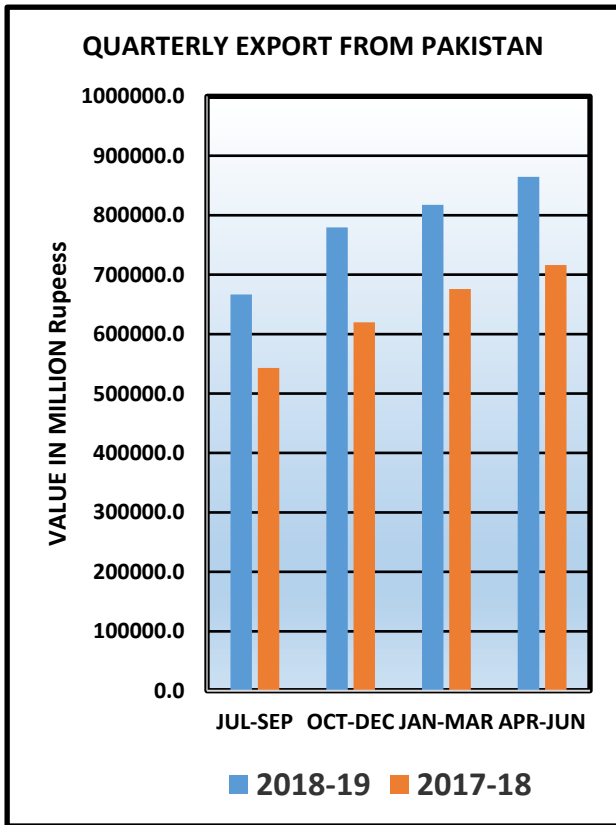
Table 1: Trade Summary

(Million Rupees)
(Million US\$)

DESCRIPTION	VALUES						% CHANGE JAN-MAR, 2019 OVER			
	JAN-MAR, 2019		OCT-DEC, 2018		JAN-MAR, 2018		OCT-DEC, 2018		JAN-MAR, 2018	
	Rs.	\$	Rs.	\$	Rs.	\$	Rs.	\$	Rs.	\$
Export	817,532.45	5,889.98	779,503.15	5,807.23	675,913.75	6,088.11	4.88	1.42	20.95	-3.25
Import	1,766,437.84	12,727.05	1,847,256.36	13,787.64	1,729,634.50	15,585.94	-4.38	-7.69	2.13	-18.34
Total Trade	2,583,970.29	18,617.02	2,626,759.51	19,594.87	2,405,548.25	21,674.04	-1.63	-4.99	7.42	-14.10
Balance of Trade	-948,905.39	-6,837.07	-1,067,753.21	-7,980.40	-1,053,720.75	-9,497.83	-11.13	-14.33	-9.95	-28.01

(Million Rupees)
(Million US\$)

DESCRIPTION	VALUES				% CHANGE	
	JUL-JUN, 2018-19		JUL-JUN, 2017-18		JUL-JUN, 2018-19 OVER JUL-JUN, 2017-18	
	Rs.	\$	Rs.	\$	Rs.	\$
Export	3,128,229.73	22,958.32	2,555,043.29	23,212.01	22.43	-1.09
Import	7,443,253.26	54,762.98	6,694,896.67	60,794.73	11.18	-9.92
Total Trade	10,571,482.99	77,721.30	9,249,939.96	84,006.74	14.29	-7.48
Balance of Trade	-4,315,023.53	-31,804.66	-4,139,853.38	-37,582.72	4.23	-15.37



I – EXPORT BY GROUP/COMMODITIES

Food Group

During Apr-Jun, 2019 export of goods belonging to Food Group decreased by 11.33% over Jan-Mar, 2019 but increased by 31.61% over Apr-Jun, 2018. Food Group contributed 14.39% of total exports.

The export of food group during Jul-Jun, 2018-19 increased by 25.51% compared to the same period of last year.

Textile Group

During Apr-Jun, 2019 export of Textile goods increased by 5.69% over Jan-Mar, 2019 and by 19.43% over Apr-Jun, 2018. Textile Group contributed 55.04% of total exports.

The export of textile group increased by 22.29% for the period of Jul-Jun, 2018-19 compared to the same period of last year.

Manufactures Group

During Apr-Jun, 2019 export of manufactured goods increased by 20.63% over Jan-Mar, 2019 and by 17.10% over Apr-Jun, 2018. Manufactures Group contributed 8.00% of total exports.

Export for manufacturer group during Jul-Jun, 2018-19 increased by 14.45% compared to the same period of last year.

TABLE – 2

Quarterly Exports by Group/Commodities

(Value in Million Rupees)

Commodities	Apr-Jun, 2019	Jan-Mar, 2019	Apr-Jun, 2018	% Change	
				Apr-Jun, 2019 over	
				Jan-Mar, 2019	Apr-Jun, 2018
Total	864,530.96	817,532.45	716,170.38	5.75	20.72
A. Food Group	124,428.54	140,320.30	94,508.70	-11.33	31.66
1 Rice	85,131.90	92,999.08	62,947.37	-8.46	35.24
2 Fish & fish preparation	21,158.15	15,307.34	15,724.34	38.22	34.56
3 Fruits,vegetables & preparation thereof	17,437.30	31,899.51	15,635.51	-45.34	11.52
4 Tobacco un-manufactured	701.19	114.37	201.48	513.09	248.02
B. Textile Group	475,818.21	450,205.53	398,414.54	5.69	19.43
1 Knitwear	109,687.28	94,238.18	86,234.51	16.39	27.20
2 Articles of apparel and clothing accessories (excl. knitwear)	102,647.51	96,641.61	76,872.18	6.21	33.53
3 Bedwear	79,868.95	77,474.41	68,470.36	3.09	16.65
4 Cotton fabrics	74,419.36	75,451.11	66,832.93	-1.37	11.35
5 Cotton yarn	42,467.99	39,871.73	44,771.44	6.51	-5.14
6 Towels	29,053.62	29,159.61	23,126.96	-0.36	25.63
7 Textile made up (excl. towels & bed wear)	23,619.62	24,378.65	19,977.36	-3.11	18.23
8 Synthetic textile fabrics	11,265.71	10,099.23	9,539.23	11.55	18.10
9 Tarpaulin & other canvas goods	2,085.73	2,634.42	2,249.98	-20.83	-7.30
10 Raw cotton (excl. linters)	682.99	230.52	279.74	196.28	144.15
11 Raw wool	19.45	26.06	59.85	-25.36	-67.50
C. Manufacture Group	69,144.84	57,320.90	59,046.52	20.63	17.10
1 Leather clothes & accessories	18,705.71	15,456.45	15,297.48	21.02	22.28
2 Surgical instruments	15,912.68	12,639.75	11,077.10	25.89	43.65
3 Sports goods (excl. toys)	12,552.66	9,977.93	11,331.30	25.80	10.78
4 Leather	9,423.02	8,282.56	10,455.21	13.77	-9.87
5 Footwear	4,785.89	4,555.65	3,187.44	5.05	50.15
6 Petroleum products	5,337.20	4,339.41	5,608.35	22.99	-4.83
7 Carpets, carpeting, rugs & mats	2,427.68	2,069.15	2,089.64	17.33	16.18
Others	195,139.37	169,685.72	164,200.62	15.00	18.84

TABLE – 3
Cumulative Exports by Group/Commodities

(Value in Million Rupees)

Commodities	Jul-Jun, 2018-19	Jul-Jun, 2017-18	% Change
			Jul-Jun, 2018-19 over Jul-Jun, 2017-18
Total	3,128,229.73	2,555,043.29	22.43
A. Food Group	439,609.61	350,258.69	25.51
1 Rice	285,031.46	224,739.47	26.83
2 Fruits,vegetables & preparation thereof	91,307.83	73,207.18	24.73
3 Fish & fish preparation	60,404.62	49,755.50	21.40
4 Tobacco un-manufactured	2,865.70	2,556.54	12.09
B. Textile Group	1,756,607.35	1,436,461.45	22.29
1 Knitwear	394,748.43	298,374.17	32.30
2 Articles of apparel and clothing accessories (excl. knitwear)	362,319.99	283,497.64	27.80
3 Bedwear	307,202.33	248,537.70	23.60
4 Cotton fabrics	285,625.17	242,374.42	17.84
5 Cotton yarn	152,725.58	151,063.37	1.10
6 Towels	107,042.50	87,633.18	22.15
7 Textile made up (excl. towels & bed wear)	92,422.06	75,243.34	22.83
8 Synthetic textile fabrics	40,433.40	34,069.34	18.68
9 Tarpaulin & other canvas goods	11,201.60	9,338.39	19.95
10 Raw cotton (excl. linters)	2,708.97	6,183.56	-56.19
11 Raw wool	177.32	146.34	21.17
C. Manufacture Group	246,796.21	215,645.15	14.45
1 Leather clothes & accessories	66,146.02	57,422.44	15.19
2 Surgical instruments	52,969.89	41,617.69	27.28
3 Sports goods (excl. toys)	41,994.66	37,710.20	11.36
4 Leather	34,269.29	36,329.90	-5.67
5 Petroleum products	25,535.54	22,334.91	14.33
6 Footwear	16,734.22	11,912.93	40.47
7 Carpets, carpeting, rugs & mats	9,146.59	8,317.08	9.97
Others	685,216.56	552,678.00	23.98

II – DIRECTION OF EXPORTS

During the month of Apr-Jun, 2019, the share of European Union in total exports was 33.80% as against 33.54% in Apr-Jun, 2018. The share of Other Asia in total exports was 26.73% as against 30.07% in Apr-Jun, 2018. The share of North America during Apr-Jun, 2019 was 18.30% as against 16.50% in Apr-Jun, 2018. The share of Middle East during Apr-Jun, 2019 was 12.69% as against 11.12% in Apr-Jun, 2018. The share of Other Africa during Apr-Jun, 2019 was 4.42% as against 4.23% in Apr-Jun, 2018. Country-wise U. S. A. was at the top of the export list for Apr-Jun, 2019 followed by China, United Kingdom, United Arab Emirates, Afghanistan and Germany. The share of these six countries in total exports for Apr-Jun, 2019 was 49.72% as against 33.43% in Apr-Jun, 2018.

During Jul-Jun, 2018-19 the share of European Union in total exports increased 34.02% from 33.86% during the same period of last year. The share of Other Asia in total exports decreased 27.89% from 28.77% during the same period of last year. The share of North America increased to 18.21% from 16.77% during the same period of last year. The share of Middle East increased to 10.15% from 10.10% during the same period of last year. The share of Other Africa decreased to 5.12% from 5.79% during the same period of last year.

Country-wise, U.S.A. was at the top of the exports list for Jul-Jun, 2019 followed by China, United Kingdom, Afghanistan, Germany, and Netherlands. The share of these six countries in total exports for Jul-Jun, 2018-19 of the current fiscal year was 47.99% as against 46.18% in the same period of last year.

TABLE – 4

QUARTERLY & CUMMULATIVE EXPORTS BY TERRITORIES/REGIONS

(Value in million Rupees)

Countries	Apr-Jun, 2019		Apr-Jun, 2018		Jul-Jun, 2018-19		Jul-Jun, 2017-18	
	Value	% Share	Value	% Share	Value	% Share	Value	% Share
TOTAL	2,072,109.96	100.00	1,925,897.75	100.00	7,443,253.26	100.00	6,694,896.67	100.00
1 Other Asia	876,084.63	42.28	878,360.29	45.61	3,315,907.74	44.55	3,190,348.69	47.65
2 Middle East	604,902.78	29.19	564,530.92	29.31	2,197,269.31	29.52	1,831,352.93	27.35
Asian Countries	597,240.40	28.82	559,973.53	29.08	2,172,274.84	29.18	1,810,237.06	27.04
African Countries	7,662.38	0.37	4,557.39	0.24	24,994.47	0.34	21,115.87	0.32
3 European Union	280,975.65	13.56	191,231.95	9.93	836,474.60	11.24	714,438.16	10.67
4 North America	134,698.45	6.50	114,558.19	5.95	446,263.57	6.00	394,091.57	5.89
5 Other Africa	89,762.79	4.33	89,102.56	4.63	378,852.84	5.09	282,598.37	4.22
6 South America	41,431.58	2.00	34,993.31	1.82	86,541.43	1.16	98,968.62	1.48
7 E.F.T.A	15976.6	0.77	13747.05	0.71	50254.87	0.68	45,558.79	0.68
8 Eastern Europe	13,617.92	0.66	18,620.39	0.97	64,968.41	0.87	65,999.99	0.99
9 Oceania	7,606.62	0.37	12,153.71	0.63	46,877.92	0.63	53,746.90	0.80
10 Latin & Central America	6,933.59	0.33	8,449.03	0.44	18,355.15	0.25	17,233.75	0.26
11 Other Europe	119.35	0.01	150.34	0.01	1487.41	0.02	558.90	0.01

TABLE – 5

QUARTERLY EXPORTS TO MAJOR COUNTRIES

(Value in million Rupees)

Countries		Apr-Jun, 2019		Apr-Jun, 2018	
		Value	% Share	Value	% Share
	TOTAL	<i>864,530.96</i>	<i>100.00</i>	<i>716,170.38</i>	<i>100.00</i>
1	U.S.America	148,235.86	17.15	19,586.02	2.73
2	China	77,476.99	8.96	51,805.88	7.23
3	United Kingdom	59,914.56	6.93	50,993.38	7.12
4	United Arab Emirates	48,537.65	5.61	34,420.25	4.81
5	Afghanistan	47,885.17	5.54	42,781.82	5.97
6	Germany	47,820.26	5.53	39,861.56	5.57
7	Netherlands	36,533.23	4.23	27,558.58	3.85
8	Spain	33,272.48	3.85	27,202.40	3.80
9	Italy	33,152.53	3.83	24,517.91	3.42
10	Bangladesh	24,036.90	2.78	21,882.68	3.06
11	Belgium	21,672.63	2.51	21,543.50	3.01
12	France	14,854.79	1.72	13,618.19	1.90
13	Saudi Arabia	13,820.01	1.60	9,011.94	1.26
14	Korea, Republic of	13,296.61	1.54	10,990.21	1.53
15	Turkey	13,069.68	1.51	9,916.06	1.38
16	Poland	10,379.43	1.20	6,853.83	0.96
17	Sri Lanka	10,199.81	1.18	9,425.49	1.32
18	Canada	9,998.84	1.16	8,599.84	1.20
19	Viet Nam	9,859.90	1.14	9,943.23	1.39
20	Kenya	9,601.57	1.11	6,906.37	0.96
	* OTHERS	180,912.06	20.93	268,751.24	37.53

TABLE – 6

CUMMULATIVE EXPORTS TO MAJOR COUNTRIES

(Value in million Rupees)

Countries	Jul-Jun, 2018-19		Jul-Jun, 2017-18	
	Value	% Share	Value	% Share
<i>TOTAL</i>	<i>3,128,229.73</i>	<i>100.00</i>	<i>2,555,043.29</i>	<i>100.00</i>
1 U.S.America	532,849.13	17.03	400,447.89	15.67
2 China	259,561.65	8.30	185,722.53	7.27
3 United Kingdom	226,848.19	7.25	186,736.06	7.31
4 Afghanistan	176,371.12	5.64	165,152.95	6.46
5 Germany	173,380.29	5.54	146,726.01	5.74
6 Netherlands	132,209.36	4.23	95,198.35	3.73
7 Spain	126,495.82	4.04	14,485.68	0.57
8 United Arab Emirates	125,805.13	4.02	13,559.95	0.53
9 Italy	107,413.61	3.43	84,476.21	3.31
10 Bangladesh	101,789.77	3.25	80,689.86	3.16
11 Belgium	84,842.57	2.71	78,245.77	3.06
12 France	53,910.33	1.72	45,548.86	1.78
13 Saudi Arabia	44,805.62	1.43	33,241.67	1.30
14 Sri Lanka	42,796.56	1.37	35,230.76	1.38
15 Turkey	39,214.26	1.25	36,871.99	1.44
16 Korea, Republic of	37,499.83	1.20	35,680.29	1.40
17 Canada	36,851.36	1.18	28,050.47	1.10
18 Kenya	35,900.08	1.15	31,596.47	1.24
19 Poland	34,863.25	1.11	24,123.24	0.94
20 India	34,855.24	1.11	39,247.60	1.54
* OTHERS	719,966.56	23.02	794,010.68	31.08

III – EXPORT BY ECONOMIC CATEGORIES

Export of Primary Commodities during Apr-Jun, 2019 increased by 17.42%, Semi-Manufactures by 3.26% and Manufactured Goods by 24.89%. Whereas, their share in total export stands at 18.12%, 11.00% and 70.87% consecutively.

Whereas the share of primary commodities in total export for the period of Jul-Jun, 2018-19 stood at 18.15%, for primary commodities, 9.82% for semi-manufacturer and 72.02% for manufactured goods.

Table - 7
Export by Economic Categories

(Value in million Rupees)

Economic Category	Apr-Jun, 2019	Apr-Jun, 2018	Jul-Jun, 2018-19	Jul-Jun, 2017-18
TOTAL	864,530.96	716,170.38	3,128,229.73	2,555,043.29
1. PRIMARY COMMODITIES.	156,680.63	133,436.38	567,875.85	454,348.50
% SHARE IN TOTAL EXPORTS.	18.12	18.63	18.15	17.78
2. SEMI-MANUFACTURES.	95,124.18	92,118.70	307,322.32	307,567.34
% SHARE IN TOTAL EXPORTS.	11.00	12.86	9.82	12.04
3. MANUFACTURED GOODS.	612,726.15	490,615.31	2,253,031.56	1,793,127.46
% SHARE IN TOTAL EXPORTS.	70.87	68.51	72.02	70.18

I – IMPORT BY GROUPS/COMMODITIES

Food Group

During Apr-Jun, 2019 import of goods belonging to Food Group increased by 3.40% over Jan-Mar, 2019 and by 20.13% over Apr-Jun, 2018. This group contributed 5.50% of total imports.

The import of food group during Jul-Jun, 2018-19 increased by 14.25% compared to the same period of last year.

Machinery & Transport Group

During Apr-Jun, 2019 import of goods belonging to Machinery & Transport group increased by 20.88% over Jan-Mar, 2019 but decreased by 4.63% over Apr-Jun, 2018. This group contributed 22.58% of total imports.

The import of machinery & transport group during Jul-Jun, 2018-19 decreased by 7.06% compared to the same period of last year.

Petroleum Group

During Apr-Jun, 2019 import of goods belonging to Petroleum group increased by 40.35% over Jan-Mar, 2019 and by 8.96% over Apr-Jun, 2018. This group contributed 20.32% of total imports.

The import of petroleum group during Jul-Jun, 2018-19 increased by 14.41% compared to the same period of last year.

Textile Group

During Apr-Jun, 2019 import of goods belonging to textile group increased by 19.78% over Jan-Mar 2019 and by 42.07% over Apr-Jun, 2018. This group contributed 2.58% of total imports.

The import of textile group during Jul-Jun, 2018-19 increased by 31.34% compared to the same period of last year.

Chemical Group

During Apr-Jun, 2019 import of goods belonging to Chemical group increased by 15.60% over Jan-Mar, 2019 and by 12.52% over Apr-Jun, 2018. This group contributed 15.49% of total imports.

The import of chemical group during Jul-Jun, 2018-19 increased by 21.14% compared to the same period of last year.

Metal Group

During Apr-Jun, 2019 export of Metal products increased by 12.21% over Jan-Mar, 2019 and by 1.23% over Apr-Jun, 2018. This group contributed 6.58% of total imports.

The import of metal group during Jul-Jun, 2018-19 increased by 13.29% compared to the same period of last year.

Miscellaneous Group

During Apr-Jun, 2019 exports of miscellaneous commodities decreased by 9.37% over Jan-Mar, 2019 and by 15.77% over Apr-Jun, 2018. This group contributed 1.00% of total imports.

The import of miscellaneous group during Jul-Jun, 2018-19 decreased by 6.48% compared to the same period of last year.

TABLE – 8

Quarterly Imports by Group/Commodities

(Value in Million Rupees)

Commodities	Apr-Jun, 2019	Jan-Mar, 2019	Apr-Jun, 2018	% Change	
				Apr-Jun, 2019 over	
				Jan-Mar, 2019	Apr-Jun, 2018
Total	2,072,109.96	1,766,437.79	1,925,897.75	17.30	7.59
A-Food Group	113,979.82	110,230.56	94,879.55	3.40	20.13
1 Palm oil	67,435.09	63,074.09	57,761.49	6.91	16.75
2 Tea	18,386.77	20,002.87	11,752.21	-8.08	56.45
3 Pulses	16,589.57	14,648.64	14,831.86	13.25	11.85
4 Milk & milk food for infants	5,776.87	9,761.96	7,560.67	-40.82	-23.59
5 Soyabean oil	5,791.52	2,743.00	2,973.32	111.14	94.78
B-Machinery & Trans. Group	467,966.42	387,130.90	490,668.28	20.88	-4.63
1 Machinery	326,721.10	313,413.76	362,505.18	4.25	-9.87
2 Transport equipment	141,245.32	73,717.14	128,163.10	91.60	10.21
C-Petroleum Group	420,977.96	299,940.20	386,359.96	40.35	8.96
1 Petroleum products	245,699.81	167,654.66	235,068.71	46.55	4.52
2 Petroleum crude	175,278.15	132,285.54	151,291.25	32.50	15.85
D-Textile Group	53,509.62	44,672.22	37,665.15	19.78	42.07
1 Synthetic & artificial silk yarn	30,167.04	25,412.43	20,531.02	18.71	46.93
2 Synthetic fibre	23,342.58	19,259.79	17,134.13	21.20	36.23
E-Chemical Group	320,943.80	277,637.54	285,244.90	15.60	12.52
1 Chemicals (excl. 2, 3 & 4)	261,502.71	226,406.99	218,518.44	15.50	19.67
2 Medicinal products	39,117.58	35,181.82	35,081.06	11.19	11.51
3 Fertilizer manufactured	12,306.98	9,713.60	25,292.91	26.70	-51.34
4 Insecticide	8,016.53	6,335.13	6,352.49	26.54	26.20
F-Metal Group	136,409.21	121,566.56	118,377.33	12.21	15.23
1 Iron & steel	84,495.23	73,917.23	69,615.22	14.31	21.37
2 Iron & steel scrap	51,913.98	47,649.33	48,762.11	8.95	6.46
G-Miscellaneous Group	20,704.11	22,845.49	24,581.79	-9.37	-15.77
1 Paper & paper products	17,217.47	19,264.67	17,756.98	-10.63	-3.04
2 Tyres & tubes	3,486.64	3,580.82	6,824.81	-2.63	-48.91
Others	537,619.02	502,414.32	488,120.79	7.01	10.14

TABLE – 9

Cumulative Imports by Group/Commodities

(Value in Million Rupees)

Commodities	Jul-Jun, 2018-19	Jul-Jun, 2017-18	% Change
			Jul-Jun, 2018-19 over Jul-Jun, 2017-18
Total	7,443,253.26	6,694,896.67	11.18
A-Food Group	438,736.37	384,021.44	14.25
1 Palm oil	250,597.25	223,878.67	11.93
2 Tea	77,366.79	60,368.49	28.16
3 Pulses	68,265.33	58,783.74	16.13
4 Milk & milk food for infants	27,674.23	26,307.04	5.20
5 Soyabean oil	14,832.77	14,683.50	1.02
B-Machinery & Trans. Group	1,621,800.84	1,745,028.34	-7.06
1 Machinery	1,224,028.66	1,282,398.12	-4.55
2 Transport equipment	397,772.18	462,630.22	-14.02
C-Petroleum Group	1,475,012.10	1,289,222.30	14.41
1 Petroleum products	854,679.81	821,230.42	4.07
2 Petroleum crude	620,332.29	467,991.88	32.55
D-Textile Group	174,477.04	132,840.87	31.34
1 Synthetic & artificial silk yarn	94,610.84	72,995.98	29.61
2 Synthetic fibre	79,866.20	59,844.89	33.46
E-Chemical Group	1,191,281.56	983,359.58	21.14
1 Chemicals (excl. 2, 3 & 4)	911,782.44	755,196.31	20.73
3 Medicinal products	148,427.97	118,122.37	25.66
2 Fertilizer manufactured	105,161.92	90,878.70	15.72
4 Insecticide	25,909.23	19,162.20	35.21
F-Metal Group	501,294.36	442,504.64	13.29
1 Iron & steel	303,100.90	268,439.24	12.91
2 Iron & steel scrap	198,193.46	174,065.40	13.86
G-Miscellaneous Group	91,131.94	97,445.23	-6.48
1 Paper & paper products	72,568.66	63,274.46	14.69
2 Tyres & tubes	18,563.28	34,170.77	-45.67
Others	1,949,519.05	1,620,474.27	20.31

II – DIRECTION OF IMPORTS

During the month of Apr-Jun, 2019, the share of European Union in total imports was 13.56% as against 9.93% in Apr-Jun, 2018. The share of North America during Apr-Jun, 2019 was 6.50% as against 5.95% in Apr-Jun, 2018. The share of Middle East during Apr-Jun, 2019 was 29.19% as against 29.31% in Apr-Jun, 2018. Country-wise China was at the top of the import list for Apr-Jun, 2019 followed by United Arab Emirates, Saudi Arabia, U. S. A., Qatar and Indonesia. The share of these six countries in total exports for Apr-Jun, 2019 was 54.69% as against 58.12% in Apr-Jun, 2018.

During Jul-Jun, 2018-19 the share of European Union in total import increased to 11.24% from 10.67% during the same period of last year. The share of North America increased to 6.00% from 5.89% during the same period of last year. The share of Middle East increased to 29.52% from 27.35% during the same period of last year.

Country-wise China was on the top of the imports list followed by United Arab Emirates, Saudi Arabia, U.S.A., Qatar and Indonesia during Jul-Jun, 2018-19. The combined share of these six countries in total imports during this period was 56.33% as against their combined share of 56.59% during the corresponding period of last year.

TABLE – 10

QUARTERLY & CUMMULATIVE IMPORTS BY TERRITORIES/REGIONS

(Value in million Rupees)

Countries	Apr-Jun, 2019		Apr-Jun, 2018		Jul-Jun, 2018-19		Jul-Jun, 2017-18	
	Value	% Share	Value	% Share	Value	% Share	Value	% Share
TOTAL	2,072,109.96	100.00	1,925,897.75	100.00	7,443,253.26	100.00	6,694,896.67	100.00
1 Latin & Central America	6,933.59	0.33	8,449.03	0.44	18,355.15	0.25	17,233.75	0.26
2 South America	41,431.58	2.00	34,993.31	1.82	86,541.43	1.16	98,968.62	1.48
3 North America	134,698.45	6.50	114,558.19	5.95	446,263.57	6.00	394,091.57	5.89
4 Eastern Europe	13,617.92	0.66	18,620.39	0.97	64,968.41	0.87	65,999.99	0.99
5 European Union	280,975.65	13.56	191,231.95	9.93	836,474.60	11.24	714,438.16	10.67
6 E.F.T.A	15976.6	0.77	13747.05	0.71	50254.87	0.68	45,558.79	0.68
7 Other Europe	119.35	0.01	150.34	0.01	1487.41	0.02	558.90	0.01
8 Middle East	604,902.78	29.19	564,530.92	29.31	2,197,269.31	29.52	1,831,352.93	27.35
Asian Countries	597,240.40	28.82	559,973.53	29.08	2,172,274.84	29.18	1,810,237.06	27.04
African Countries	7,662.38	0.37	4,557.39	0.24	24,994.47	0.34	21,115.87	0.32
9 Other Asia	876,084.63	42.28	878,360.29	45.61	3,315,907.74	44.55	3,190,348.69	47.65
10 Other Africa	89,762.79	4.33	89,102.56	4.63	378,852.84	5.09	282,598.37	4.22
11 Oceania	7,606.62	0.37	12,153.71	0.63	46,877.92	0.63	53,746.90	0.80

TABLE – 11

QUARTERLY IMPORTS FROM MAJOR COUNTRIES

(Value in million Rupees)

Countries		Apr-Jun, 2019		Apr-Jun, 2018	
		Value	% Share	Value	% Share
	<i>TOTAL</i>	2,072,109.96	100.00	1,925,897.75	100.00
1	China	467,123.64	22.54	479,093.21	24.88
2	United Arab Emirates	260,421.03	12.57	308,994.37	16.04
3	Saudi Arabia	115,133.59	5.56	100,585.10	5.22
4	U.S.America	109,325.94	5.28	94,495.75	4.91
5	Qatar	99,464.14	4.80	63,243.08	3.28
6	Indonesia	81,741.90	3.94	72,898.47	3.79
7	Italy	76,248.82	3.68	22,829.57	1.19
8	Japan	58,170.70	2.81	68,873.55	3.58
9	Kuwait	51,977.59	2.51	39,246.33	2.04
10	India	49,961.04	2.41	65,085.40	3.38
11	Thailand	49,358.25	2.38	47,492.35	2.47
12	Netherlands	45,611.15	2.20	13,805.83	0.72
13	Malaysia	42,546.13	2.05	37,400.74	1.94
14	South Africa	42,089.16	2.03	39,455.53	2.05
15	Germany	37,186.95	1.79	45,192.84	2.35
16	Oman	36,107.57	1.74	22,931.88	1.19
17	Brazil	34,716.43	1.68	31,344.61	1.63
18	Korea, Republic of	32,840.83	1.58	33,256.82	1.73
19	O.Asia(Tai.For.Pe.Ki	28,182.17	1.36	15,828.77	0.82
20	Europien Union	25,808.07	1.25	23,838.53	1.24
	* OTHERS	328,094.86	15.83	300,005.02	15.58

TABLE – 12

CUMMULATIVE IMPORTS FROM MAJOR COUNTRIES

(Value in million Rupees)

Countries	Jul-Jun, 2018-19		Jul-Jun, 2017-18	
	Value	% Share	Value	% Share
TOTAL	7,443,253.26	100.00	6,694,896.67	100.00
1 China	1,734,480.41	23.30	1,731,865.40	26.29
2 United Arab Emirates	1,020,143.19	13.71	893,253.05	12.25
3 Saudi Arabia	401,330.19	5.39	356,424.07	5.36
4 U.S.America	368,883.69	4.96	316,416.95	4.65
5 Qatar	340,579.98	4.58	212,240.04	4.31
6 Indonesia	327,287.40	4.40	278,478.92	3.12
7 Japan	246,401.87	3.31	267,102.80	4.16
8 India	204,785.47	2.75	207,520.75	2.99
9 Kuwait	185,787.95	2.50	159,693.82	2.53
10 Thailand	180,285.98	2.42	152,175.98	2.20
11 South Africa	161,240.81	2.17	131,537.68	1.93
12 Malaysia	145,501.60	1.95	132,031.44	2.12
13 Germany	142,625.45	1.92	146,426.52	1.98
14 Italy	132,088.67	1.77	72,833.97	1.27
15 Korea, Republic of	112,508.51	1.51	106,837.61	1.99
16 United Kingdom	109,573.97	1.47	86,389.15	1.54
17 Singapore	103,817.53	1.39	114,166.38	1.21
18 Oman	98,011.80	1.32	90,303.12	1.41
19 European Union	91,029.80	1.22	81,679.77	0.81
20 O.Asia(Tai.For.Pe.Ki	87,293.06	1.17	54,190.66	0.80
* OTHERS	1,249,595.93	16.79	1,103,328.59	16.48

III – IMPORTS BY ECONOMIC CATEGORIES

Imports of Consumer Goods during Apr-Jun, 2019 increased by 31.40%, Raw Material for Consumer Goods by 4.83%, Capital Goods by 4.98% and Raw Material for Capital Goods decreased by 5.45% over Apr-Jun, 2018. Their respective share in total imports were 17.27%, 45.27%, 28.58% and 8.88% respectively for Apr-Jun, 2018.

Meanwhile, the share of consumer goods for the period of Jul-Jun, 2018-19 stood at 17.89%, raw material of consumer goods at 44.35%, Capital goods at 27.71% and raw material for capital goods at 10.05%.

TABLE – 13

MONTHLY & CUMULATIVE IMPORTS BY ECONOMIC CATEGORIES

(Value in million Rupees)

Economic Category	Apr-Jun, 2019	Apr-Jun, 2018	Jul-Jun, 2018-19	Jul-Jun, 2017-18
TOTAL	2,072,109.96	1,925,897.75	7,443,253.26	6,694,896.67
1. CONSUMER GOODS	357,859.84	272,336.62	1,331,779.54	1,070,538.97
% SHARE IN TOTAL IMPORTS.	17.27	14.14	17.89	15.99
2. RAW MATERIAL FOR CONSUMER GOODS	938,006.29	894,789.31	3,301,354.30	2,878,787.63
% SHARE IN TOTAL EXPORTS.	45.27	46.46	44.35	43.00
3. RAW MATERIAL FOR CAPITAL GOODS	184,058.07	194,660.14	747,761.15	660,986.27
% SHARE IN TOTAL IMPORTS.	8.88	10.11	10.05	9.87
4. CAPITAL GOODS	592,185.75	564,111.69	2,062,358.28	2,084,583.80
% SHARE IN TOTAL IMPORTS.	28.58	29.29	27.71	31.14