

## SECTION- III

### SALIENT FEATURES

The Survey's estimates are based on the data of 36,420 sample households enumerated through July 2010 to June 2011. Findings are presented in the form of proportions and percentages to provide for all-purpose employability. The population of Pakistan as per Planning & Development Division's projection is estimated at 174.39 millions on 1<sup>st</sup> January 2011. The same has been used in arriving at absolute numbers in the report.

2. In comparison with that of the preceding LFS 2009-10, a brief account of the survey's main annual estimates follows.

#### *Marital Status*

3. Marital status (Table-1) consists mainly in the categories of *never married* and *married*. *Widowed* and *divorced* constitute wee part of the configuration. Since the composition of marital status is chiefly beholden to socio-cultural norms, it does not seem to be changing with the passage of time. See table-1 and Statistical Appendix Tables-4.

**Table-1**  
**MARITAL STATUS - DISTRIBUTION OF POPULATION 10 YEARS OF AGE AND ABOVE**  
(%)

<b>Marital Status</b>	<b>2008-09</b>	<b>2009-10</b>	<b>2010-11</b>
Never Married	45.3	45.3	45.3
Married	50.6	50.6	50.6
Widowed	3.8	3.8	3.8
Divorced	0.3	0.3	0.3
<b>Total</b>	<b>100.0</b>	<b>100.0</b>	<b>100.0</b>

#### *Sex Ratio*

4. Comparative figures for the overall sex ratio are close to each other. Rural figures are proximate to overall pattern while urban ones make a higher trend line. Punjab is more in line with the national trend followed by Khyber Pakhtunkhwa (KP) while, Sindh and Balochistan depart significantly in the same order. Migration, as one of the main factor in determining the size and composition of population, may be viewed for possible explanation in this regard.

**Table-2**  
**SEX RATIO - PAKISTAN AND ITS PROVINCES**

Province/Area	2008-09	2009-10	2010-11
Pakistan	106	106	105
Rural	106	105	104
Urban	108	108	107
Punjab	104	104	102
Sindh	115	114	113
KP	101	100	100
Balochistan	114	113	113

Source:- Derived from Statistical Appendix Table-2.

### **Literacy**

5. Literacy rate (58.5%) fares marginally higher than that of LFS 2009-10 (57.7%), more in the case of females and, in rural areas. However, rural-urban and male-female disparity seems to be closing. Provinces make two distinct groupings; Punjab & Sindh (59.8%, 60.1%) and, KP & Balochistan (53.2%, 49.8%) with decreasing inter provincial gap in the case of former and increasing one for the latter group. See table-3.

**Table-3**  
**LITERACY RATES (10 YEARS AND ABOVE) - PAKISTAN AND PROVINCES**

(%)

Province/Area	2009-10			2010-11		
	Total	Male	Female	Total	Male	Female
<b>Pakistan</b>	<b>57.7</b>	<b>69.5</b>	<b>45.2</b>	<b>58.5</b>	<b>70.2</b>	<b>46.3</b>
Rural	49.2	63.6	34.2	50.2	64.5	35.6
Urban	73.2	80.2	65.5	73.7	80.5	66.4
<b>Punjab</b>	<b>59.6</b>	<b>69.1</b>	<b>49.8</b>	<b>59.8</b>	<b>69.0</b>	<b>50.7</b>
Rural	52.5	64.0	40.7	53.3	64.3	42.3
Urban	73.5	78.9	67.8	72.8	77.9	67.5
<b>Sindh</b>	<b>58.2</b>	<b>70.2</b>	<b>44.3</b>	<b>60.1</b>	<b>72.3</b>	<b>46.0</b>
Rural	41.0	58.2	20.3	42.3	60.3	21.1
Urban	74.9	82.2	66.8	77.1	84.1	69.3
<b>KP</b>	<b>50.9</b>	<b>70.1</b>	<b>32.3</b>	<b>53.2</b>	<b>72.0</b>	<b>35.1</b>
Rural	48.4	68.3	29.1	50.4	70.2	31.6
Urban	62.7	77.8	47.4	66.2	79.8	52.1
<b>Balochistan</b>	<b>51.5</b>	<b>69.2</b>	<b>29.3</b>	<b>49.8</b>	<b>69.0</b>	<b>26.2</b>
Rural	45.7	64.2	22.5	44.6	64.3	20.0
Urban	69.6	85.0	50.6	65.7	83.5	44.4

## Level of Education

6. The comparative shares of literate bespeak marginal improvement in the profile of educational attainment. All categories allude to a sort of increase, particularly, *below matric* (37.5%, 38.0%). Generally, males are more educated compared to females. See table-4 and Statistical Appendix Table-3.

**Table-4**  
**LEVEL OF EDUCATION - DISTRIBUTION OF POPULATION 10 + YEARS OF AGE BY SEX**  
(%)

Level of Education	2009-10			2010-11		
	Total	Male	Female	Total	Male	Female
<b>A. Literate</b>	<b>57.7</b>	<b>69.5</b>	<b>45.2</b>	<b>58.5</b>	<b>70.2</b>	<b>46.3</b>
No formal education	0.5	0.6	0.5	0.4	0.4	0.4
Below matric	37.5	44.9	29.5	38.0	45.4	30.2
Matric but less than Intermediate	10.7	13.1	8.0	10.8	13.2	8.4
Intermediate but less than Degree	4.7	5.6	3.8	4.8	5.7	3.9
Degree and above	4.3	5.3	3.4	4.5	5.5	3.4
<b>B. Illiterate</b>	<b>42.3</b>	<b>30.5</b>	<b>54.8</b>	<b>41.5</b>	<b>29.8</b>	<b>53.9</b>
<b>Total (A+B)</b>	<b>100.0</b>	<b>100.0</b>	<b>100.0</b>	<b>100.0</b>	<b>100.0</b>	<b>100.0</b>

## Migration

7. Proportion of migrants and degree of populous-ness seem to be correlated positively. In this regard, provinces make a descending sequence of Punjab (65.8%), Sindh (24.8%), KP (9.0%) and Balochistan (0.4%). Migration recedes in all provinces except in Sindh. Gender disaggregated proportions form similar configuration. Further, in collation with proportions of females, the proportions of male migrants are higher in all provinces except in Punjab.

8. *Inter provincial migration* appears to be positively associated with the level of urbanization and economic development. Thus, the proportions of inter provincial migrants is sequenced in the decreasing order of Sindh (44.9%), Punjab (35.0%), KP (19.5%) and Balochistan (0.6%). Inter-provincial migration is on wane except in Sindh. Gender disaggregated proportions form similar pattern. In comparison with the proportions of males, the proportions of female migrants are higher in all provinces except in KP.

9. The proportion of *intra provincial migrants* bespeaks positive nexus with the degree of populous-ness. Provinces form expected sequence in the order of Punjab (74.2 %), Sindh (19.4%), KP (6.1%) and Balochistan (0.3%). Similar pattern obtains by gender. Intra-provincial migration recedes in all provinces except in Sindh. Proportion of male migrants is higher than of female migrants in all provinces except in Punjab. See table-5 & 5.1 and Statistical Appendix Tables-11.

**Table-5**  
**INTER AND INTRA PROVINCIAL MIGRATION 2009-10**

(%)

Provinces	Total			Inter-Provincial			Intra-Provincial		
	Total	Male	Female	Total	Male	Female	Total	Male	Female
<b>Pakistan</b>	<b>100.0</b>	<b>100.0</b>	<b>100.0</b>	<b>100.0</b>	<b>100.0</b>	<b>100.0</b>	<b>100.0</b>	<b>100.0</b>	<b>100.0</b>
Punjab	67.2	60.5	72.0	39.6	35.9	44.2	75.0	70.5	77.8
Sindh	23.0	26.1	20.7	39.8	37.8	42.3	18.2	21.3	16.3
KP	9.2	12.8	6.7	19.8	25.7	12.5	6.3	7.6	5.5
Balochistan	0.6	0.6	0.6	0.8	0.6	1.0	0.5	0.6	0.4

**Table-5.1**  
**INTER AND INTRA PROVINCIAL MIGRATION 2010-11**

(%)

Provinces	Total			Inter-Provincial			Intra-Provincial		
	Total	Male	Female	Total	Male	Female	Total	Male	Female
<b>Pakistan</b>	<b>100.0</b>	<b>100.0</b>	<b>100.0</b>	<b>100.0</b>	<b>100.0</b>	<b>100.0</b>	<b>100.0</b>	<b>100.0</b>	<b>100.0</b>
Punjab	65.8	58.0	71.2	35.0	32.2	38.6	74.2	68.6	77.4
Sindh	24.8	29.0	22.0	44.9	43.0	47.2	19.4	23.2	17.2
KP	9.0	12.6	6.5	19.5	24.3	13.4	6.1	7.8	5.2
Balochistan	0.4	0.4	0.3	0.6	0.5	0.8	0.3	0.4	0.2

10. Stream of migration flow within and between urban and rural areas. Since urbanization is the inevitable concomitant with the process of economic development, rural to urban migration steals most of the limelight due to enormity of consequential demand on the socio-economic resources.

11. **Rural to urban migration** accounts for more than quarter (28.6%) of the total flow of migrants within and between areas. Males are more savvy to go urban (33.1%) compared to females (25.4%). Proportions by province form a descending sequence of Balochistan (38.3%), Punjab (30.5%), Sindh (27.8%) and KP (16.4%). Proportions by sex in Punjab and Sindh is relatively higher for males and, for females in KP and Balochistan.

12. As for change during the comparative periods, the rural to urban migration is on wane in toto and in Punjab, levels same in KP, while waxes in Sindh & Balochistan. The change is more pronounced for males in Punjab & Sindh and for females in Balochistan and KP. See table 5.2 and Statistical Appendix-11.

**Table 5.2**  
**DISTRIBUTION OF RURAL TO URBAN MIGRATION**

(%)

Migration stream	2009-10			2010-11		
	Total	Male	Female	Total	Male	Female
<b>Pakistan</b>	28.9	33.3	25.7	28.6	33.1	25.4
Punjab	31.2	39.4	26.2	30.5	38.5	25.9
Sindh	27.0	28.7	25.4	27.8	30.8	25.0
KP	16.4	13.7	20.1	16.4	13.6	20.3
Balochistan	34.7	30.9	31.3	38.3	36.5	39.9

### ***Reasons of Migration***

13. According to the size of the relevant proportions, the *marriage* (32.2%) and movement *with parents* (24.2%) constitute the foremost reasons for migration. The former is proffered more by females while the latter's calculus owes more to males than females. Migration *with spouse* (12.0%) and *homecoming* (9.4%) make the next important couplet. Again, the former is related more by females while the latter is determined more by males than females. Next is the triplet of reasons relating to *searching for job* (5.4%), assorted/*other* explanations (4.9%) and *found the job* (4.8%). All these reasons are related more by males than females.

14. *Job transfer* (1.6%) and pursuit of *business* (1.2%) are the fourth most important set of reasons, put forth more by males than females. *Education* (1.0%) and accompanying *with son/daughter* (1.1%) is the last couplet of reason. The former is proffered more by males while the latter is related more by females.

15. As for change during the period marked by the consecutive surveys, the comparative figures seem to be proximate to each other, characterized with marginal changes. See table-6 and Statistical Appendix Table-12.

**Table -6**  
**MIGRANTS POPULATION BY MAIN REASONS OF MIGRATION**

(%)

Main Reasons of Migration	2009-10			2010-11		
	Total	Male	Female	Total	Male	Female
<b>Total</b>	<b>100.0</b>	<b>100.0</b>	<b>100.0</b>	<b>100.0</b>	<b>100.0</b>	<b>100.0</b>
Job transfer	2.1	4.4	0.3	1.6	3.3	0.2
Found a job	5.5	11.9	0.3	4.8	10.7	0.2
Searching for job	5.6	12.2	0.3	5.5	12.4	0.2
Searching for a better agriculture land	1.6	3.3	0.2	1.2	2.5	0.1
Education	0.9	1.4	0.5	1.0	1.7	0.4
Business	1.7	3.3	0.3	1.2	2.5	0.2
Health	0.1	0.2	-	0.1	0.1	-
Marriage	31.6	2.0	55.6	32.9	2.4	56.4
With parents	23.3	32.4	15.9	24.2	35.1	16.0
With spouse	11.7	0.8	20.5	12.1	1.0	20.6
With son/daughter	1.1	0.7	1.4	1.1	0.8	1.4
Return to his home	9.0	19.0	1.0	9.4	20.4	1.1
Other	5.8	8.4	3.7	4.9	7.1	3.2

**Note:** (-) Stands for insignificant

### ***Migrants Employed by Employment Status***

16. Four in five (79.6%) of migrants are either *employees* (44.3%) or *own account workers* (35.3%). About one in six (17.8%) are *contributing family workers* and one in forty (2.6%) are *employers*. More males than females are engaged as *employees* (49.5%, 29.1%), *employers* (3.4%, 0.1%) and *own account workers* (40.6%, 19.6%) while more females than males work as *contributing family workers* (51.2%, 6.5%). As for change during the comparative period, *own account workers* and *contributing family workers* seem to be notching up, *employees* lose steam, while *employer* remain at the same level. See table-7 and Statistical Appendix Table-13.

**Table- 7**  
**MIGRANTS EMPLOYED BY EMPLOYMENT STATUS**

(%)

Major Industry Divisions	2009-10			2010-11		
	Total	Male	Female	Total	Male	Female
<b>Total</b>	<b>100.0</b>	<b>100.0</b>	<b>100.0</b>	<b>100.0</b>	<b>100.0</b>	<b>100.0</b>
Employers	2.6	3.3	0.3	2.6	3.4	0.1
Own account workers	34.2	39.1	18.2	35.3	40.6	19.6
Contributing family workers	17.6	6.6	54.2	17.8	6.5	51.2
Employees	45.5	51.0	27.3	44.3	49.5	29.1

## ***Labour Force Participation Rates: Crude***

17. Crude participation rate (32.8%) is nigh equivalent to that of LFS 2009-10 (33.0%). Comparative urban rates are congruent (30.0%) while rural ones (34.5%, 34.3%) trend down. Similar scenario obtains in the case of females (15.5%, 15.6%) and males participation rates (49.5%, 49.3%). Participation rates in Punjab (35.1%, 35.2) are nigh equivalent while lose some steam in the increasing order of Sindh (32.9%, 32.7%), KP (26.7%, 26.4%) and Balochistan (26.9%, 25.2%). Similar configuration is observed in the case of augmented participation rates. See table-8 (figure-1) and Statistical Appendix Tables-14 to 14.4 and 15 to 15.4.

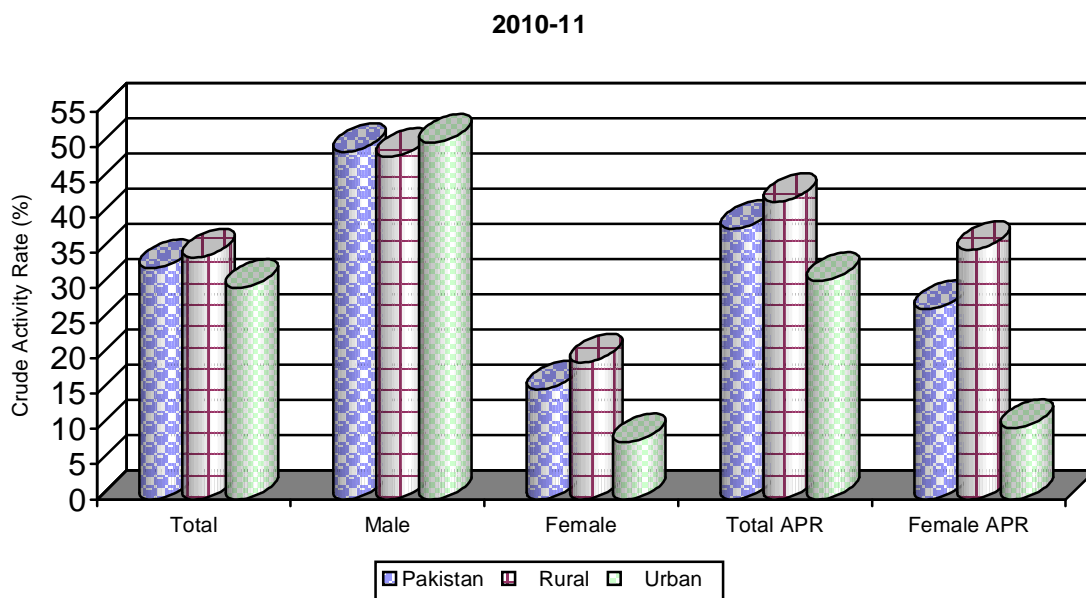
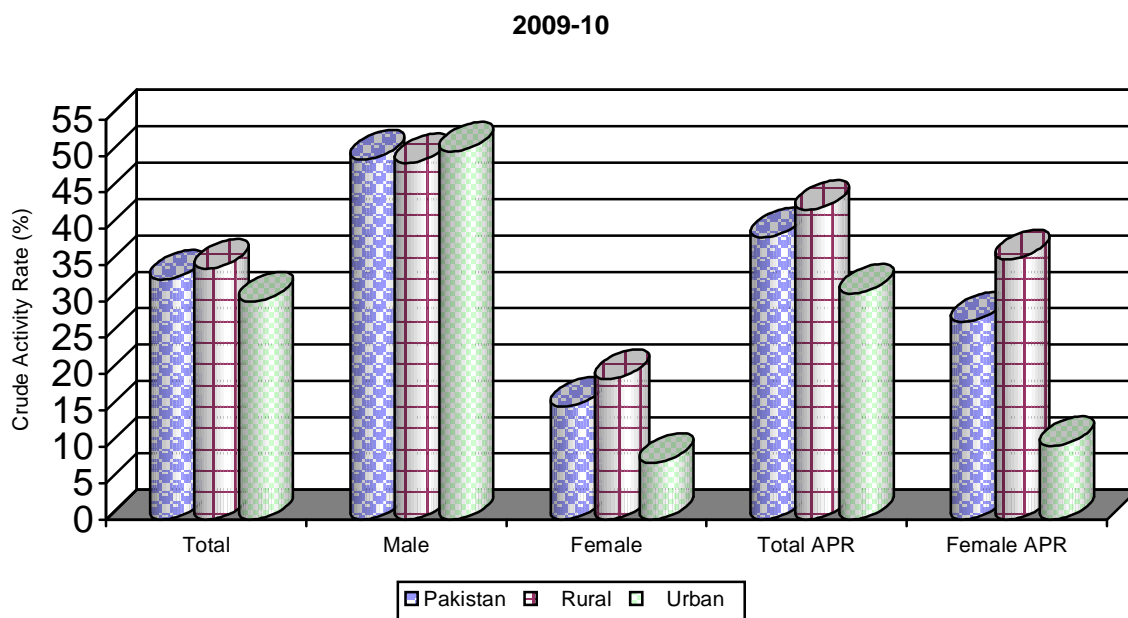
**Table-8**  
**CRUDE ACTIVITY (PARTICIPATION) RATES - PAKISTAN AND PROVINCES**

(%)

Province/ Area	2009-10					2010-11				
	Total	Male	Female	* Augmented		Total	Male	Female	* Augmented	
				Total	Female				Total	Female
<b>Pakistan</b>	<b>33.0</b>	<b>49.5</b>	<b>15.5</b>	<b>38.8</b>	<b>27.2</b>	<b>32.8</b>	<b>49.3</b>	<b>15.6</b>	<b>38.4</b>	<b>27.0</b>
Rural	34.5	49.0	19.3	42.6	35.8	34.3	48.6	19.4	42.2	35.4
Urban	30.0	50.6	7.8	31.1	10.1	30.0	50.6	8.1	31.0	10.1
<b>Punjab</b>	<b>35.1</b>	<b>50.5</b>	<b>19.2</b>	<b>38.2</b>	<b>25.4</b>	<b>35.2</b>	<b>50.6</b>	<b>19.6</b>	<b>38.2</b>	<b>25.5</b>
Rural	36.9	50.0	23.5	41.2	32.1	37.1	50.1	24.0	41.2	32.2
Urban	31.4	51.6	10.0	32.0	11.3	31.2	51.5	10.1	31.8	11.2
<b>Sindh</b>	<b>32.9</b>	<b>51.8</b>	<b>11.3</b>	<b>40.6</b>	<b>27.7</b>	<b>32.7</b>	<b>51.5</b>	<b>11.4</b>	<b>40.0</b>	<b>26.9</b>
Rural	36.1	52.2	17.3	49.7	46.6	35.5	51.7	16.9	48.7	45.0
Urban	29.3	51.3	4.8	30.6	7.5	29.6	51.3	5.5	30.5	7.4
<b>KP</b>	<b>26.7</b>	<b>43.1</b>	<b>10.3</b>	<b>38.2</b>	<b>33.0</b>	<b>26.4</b>	<b>42.5</b>	<b>10.4</b>	<b>37.0</b>	<b>31.3</b>
Rural	26.9	42.8	11.1	40.1	37.0	26.5	42.0	11.1	38.6	35.1
Urban	25.8	44.8	6.4	29.1	13.0	26.2	44.9	6.5	29.0	12.2
<b>Balochistan</b>	<b>26.9</b>	<b>44.5</b>	<b>7.0</b>	<b>37.5</b>	<b>29.3</b>	<b>25.2</b>	<b>42.7</b>	<b>5.6</b>	<b>37.6</b>	<b>31.5</b>
Rural	28.0	46.0	7.8	40.9	35.0	25.9	43.3	6.3	40.6	37.4
Urban	23.3	39.7	4.4	26.3	10.9	23.1	40.7	3.3	27.6	12.9

Note:- \* Males augmented activity rates being insignificantly higher than the standard crude rates are therefore not shown in this table.

**FIGURE-1: CRUDE ACTIVITY (PARTICIPATION) RATES BY SEX FOR PAKISTAN, RURAL AND URBAN**



APR:- Augmented Participation Rates are based on additional probing questions asked from persons especially females engaged in housekeeping and other related activities.



### ***Labour Force Participation Rates: Refined***

18. Generally, refined activity rates follow the pattern of crude participation rates, though, with wider rural-urban and male-female disparity. The refined activity rates of the comparative periods (45.9%, 45.7%) are proximate. Similar pattern obtains in the case of urban (39.5%, 39.5%), rural (49.4%, 49.1%), females (21.5%, 21.7%) and males (68.8%, 68.7%) though the latter categories in the pertinent order by area and sex, do lose some fractions. A sort of fractional change is observed in the profile of provinces, positive in the case of Punjab (48.1%, 48.3%) while negative in Sindh (45.6%, 45.0%), KP (38.6%, 38.1%) and Balochistan (41.2%, 39.8%). See table-9 and Statistical Appendix Tables-14 to 14.4 and 15 to 15.4.

**Table-9**  
**REFINED ACTIVITY (PARTICIPATION) RATES - PAKISTAN AND PROVINCES**

(%)

Province/Area	2009-10					2010-11				
	Total	Male	Female	*Augmented		Total	Male	Female	*Augmented	
				Total	Female				Total	Female
<b>Pakistan</b>	<b>45.9</b>	<b>68.8</b>	<b>21.5</b>	<b>53.9</b>	<b>37.9</b>	<b>45.7</b>	<b>68.7</b>	<b>21.7</b>	<b>53.5</b>	<b>37.4</b>
Rural	49.4	70.2	27.6	61.0	51.2	49.1	70.0	27.6	60.4	50.3
Urban	39.5	66.4	10.3	41.0	13.3	39.5	66.4	10.7	40.8	13.3
<b>Punjab</b>	<b>48.1</b>	<b>69.3</b>	<b>26.2</b>	<b>52.3</b>	<b>34.7</b>	<b>48.3</b>	<b>69.7</b>	<b>26.7</b>	<b>52.3</b>	<b>34.7</b>
Rural	51.7	70.3	32.8	57.7	44.8	51.8	70.6	33.2	57.5	44.4
Urban	41.1	67.5	13.1	41.9	14.7	41.2	68.0	13.4	42.0	14.9
<b>Sindh</b>	<b>45.6</b>	<b>71.3</b>	<b>15.8</b>	<b>56.4</b>	<b>38.9</b>	<b>45.0</b>	<b>70.3</b>	<b>15.9</b>	<b>55.1</b>	<b>37.5</b>
Rural	53.3	76.3	25.8	73.4	69.7	52.3	75.2	25.2	71.7	67.2
Urban	38.2	66.4	6.3	39.9	9.9	38.1	65.5	7.2	39.3	9.6
<b>KP</b>	<b>38.6</b>	<b>63.2</b>	<b>14.7</b>	<b>55.2</b>	<b>46.9</b>	<b>38.1</b>	<b>62.6</b>	<b>14.7</b>	<b>53.4</b>	<b>44.3</b>
Rural	39.2	63.4	15.9	58.4	53.1	38.6	62.7	15.9	56.4	50.1
Urban	35.6	62.3	8.7	40.3	17.9	36.0	62.5	8.8	39.9	16.6
<b>Balochistan</b>	<b>41.2</b>	<b>65.1</b>	<b>11.3</b>	<b>57.4</b>	<b>47.4</b>	<b>39.8</b>	<b>64.7</b>	<b>9.2</b>	<b>59.3</b>	<b>52.2</b>
Rural	43.2	67.5	12.7	63.1	57.1	41.5	66.4	10.6	65.1	63.2
Urban	34.9	57.5	6.9	39.5	17.1	34.8	59.6	5.1	41.6	20.0

**Note:-** \* Males augmented activity rates being insignificantly higher than the standard refined rates are therefore not shown in this table.

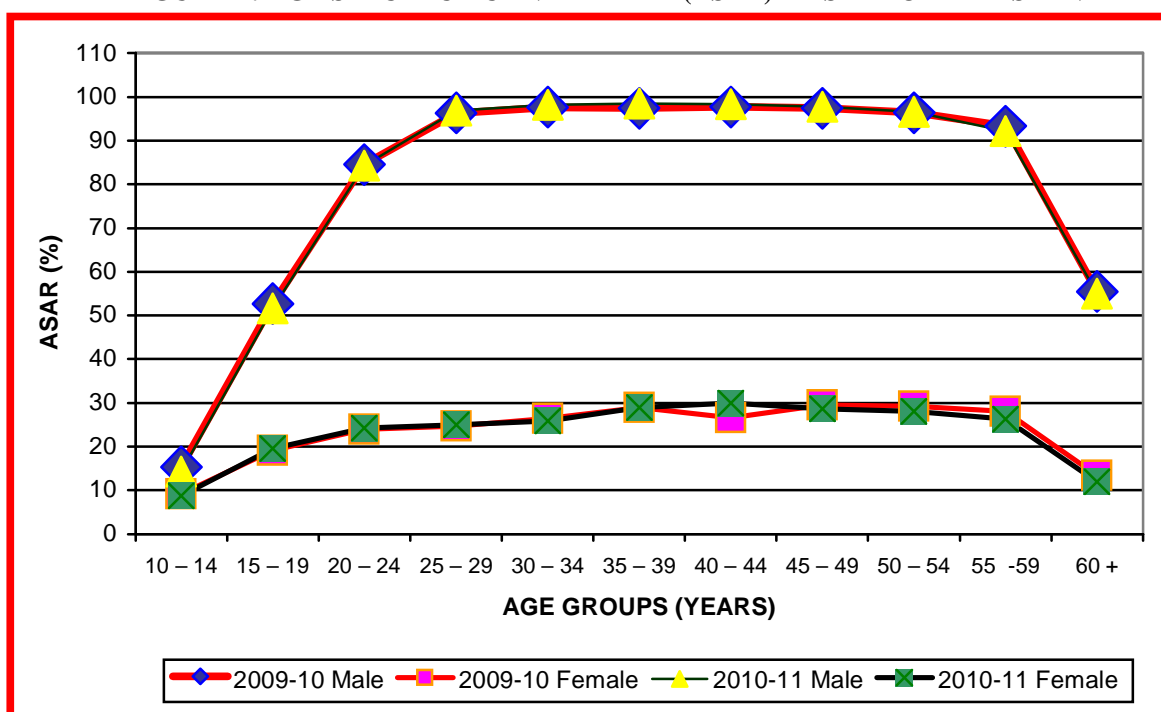
### ***Labour Force Participation Rates: Age Specific***

19. Table-10 (figure 2) presents comparative picture of age specific participation rates (ASPR). As expected, the age intervals between *twenties* and *fifties* (20-59) mark the most productive period of life. The comparative size of gender disparity, though, considerable in all age intervals, seems to be shrinking. As for change during the comparative periods, *early twenties & below*, *latter forties & above*, as well as, *early forties* put off while *latter twenties to early thirties* add some fractions. Generally, similar scenario obtains more in the case of males than females See Statistical Appendix Table-14.

**Table-10**  
**AGE SPECIFIC ACTIVITY (PARTICIPATION) RATES - BY SEX FOR PAKISTAN**

Age Groups	2009-10			2010-11		
	Total	Male	Female	Total	Male	Female
10 – 14	12.6	15.4	9.2	11.8	14.3	8.8
15 – 19	37.1	52.7	19.2	36.4	51.6	19.6
20 – 24	54.7	84.5	23.9	53.8	84.3	24.2
25 – 29	58.0	96.3	24.7	58.9	96.8	25.0
30 – 34	59.1	97.6	26.4	59.5	98.2	25.9
35 – 39	62.2	97.4	29.0	62.5	98.4	29.0
40 – 44	62.4	97.7	26.6	64.2	98.3	30.0
45 – 49	65.0	97.4	29.5	64.8	97.8	28.6
50 – 54	64.7	96.4	29.3	63.5	96.6	28.1
55 -59	62.6	93.3	28.0	61.5	92.2	26.3
60 +	37.6	55.5	13.5	37.3	55.0	11.9

**FIGURE-2: AGE SPECIFIC ACTIVITY RATE (ASAR) BY SEX FOR PAKISTAN**



### ***Labour Force: Absolute Figures***

20. The absolute figure of labour force is the multiple of crude participation rate with mid-reference year estimate of the population. The numbers of employed and unemployed persons are the “labour force multiplied with their percentages”. The labour force increases from 56.33 million in 2009-10 to 57.24 million in 2010-11. The volume of labour force increases in order of Punjab (0.47 million), Sindh (0.26 million), KP (0.16 million), and Balochistan (0.02

million). The change in the provincial profile is more of rural origin in Punjab & KP while urban in the case of Sindh & Balochistan. Further, the change is more pronounced in the case of males in all provinces except in Punjab. See table-11.

**Table-11**  
**CIVILIAN LABOUR FORCE - PAKISTAN AND PROVINCES**

(Million)

Province/Area	Labour Force					
	2009-10			2010-11		
	Total	Male	Female	Total	Male	Female
<b>Pakistan</b>	<b>56.33</b>	<b>43.53</b>	<b>12.80</b>	<b>57.24</b>	<b>43.95</b>	<b>13.29</b>
Rural	39.14	28.48	10.66	39.70	28.69	11.01
Urban	17.19	15.05	2.14	17.54	15.26	2.28
<b>Punjab</b>	<b>33.89</b>	<b>24.80</b>	<b>9.09</b>	<b>34.36</b>	<b>24.90</b>	<b>9.46</b>
Rural	24.08	16.51	7.57	24.49	16.60	7.89
Urban	9.81	8.29	1.52	9.87	8.30	1.57
<b>Sindh</b>	<b>13.80</b>	<b>11.59</b>	<b>2.21</b>	<b>14.06</b>	<b>11.76</b>	<b>2.30</b>
Rural	7.94	6.19	1.75	8.00	6.23	1.77
Urban	5.86	5.40	0.46	6.06	5.53	0.53
<b>KP</b>	<b>6.42</b>	<b>5.18</b>	<b>1.24</b>	<b>6.58</b>	<b>5.29</b>	<b>1.29</b>
Rural	5.36	4.25	1.11	5.46	4.31	1.15
Urban	1.06	0.93	0.13	1.12	0.98	0.14
<b>Balochistan</b>	<b>2.22</b>	<b>1.96</b>	<b>0.26</b>	<b>2.24</b>	<b>2.00</b>	<b>0.24</b>
Rural	1.76	1.53	0.23	1.75	1.55	0.20
Urban	0.46	0.43	0.03	0.49	0.45	0.04

**Note:-** Figures for the year 2009-10 will not tally with the figures given in the report of LFS 2009-10 due to the revision of revised population projections of the Planning Commission.

**Source:-** Derived from Statistical Appendix Tables 6 to 6.4.

### ***Employed: Absolute Figures***

21. The number of employed increases from 53.21 million in 2009-10 to 53.84 million in 2010-11. The size of change is in the descending order of Punjab (0.31 million), KP (0.18 million), Sindh (0.13 million) and Balochistan (0.01 million). The volume of employed is on rise in rural Punjab & Sindh and, for female while change is negative in the case of males and, in urban areas. Completely opposite scenario obtains in Balochistan while KP's profile betrays positive change across the area and gender. Dip in the volume of employed is precipitated by higher share of unemployed in the quantum of rise in the labour force during the comparative periods. See table-12.

**Table-12**  
**EMPLOYED - PAKISTAN AND PROVINCES**

(Million)

Province/Area	Employed					
	2009-10			2010-11		
	Total	Male	Female	Total	Male	Female
<b>Pakistan</b>	<b>53.21</b>	<b>41.62</b>	<b>11.59</b>	<b>53.84</b>	<b>41.73</b>	<b>12.11</b>
Rural	37.25	27.36	9.89	37.85	27.55	10.30
Urban	15.96	14.26	1.70	15.99	14.18	1.81
<b>Punjab</b>	<b>31.95</b>	<b>23.62</b>	<b>8.33</b>	<b>32.26</b>	<b>23.59</b>	<b>8.67</b>
Rural	22.92	15.83	7.09	23.24	15.84	7.40
Urban	9.03	7.79	1.24	9.02	7.75	1.27
<b>Sindh</b>	<b>13.23</b>	<b>11.24</b>	<b>1.99</b>	<b>13.36</b>	<b>11.22</b>	<b>2.14</b>
Rural	7.70	6.07	1.63	7.85	6.13	1.72
Urban	5.53	5.17	0.36	5.51	5.09	0.42
<b>KP</b>	<b>5.87</b>	<b>4.83</b>	<b>1.04</b>	<b>6.05</b>	<b>4.97</b>	<b>1.08</b>
Rural	4.91	3.96	0.95	5.05	4.06	0.99
Urban	0.96	0.87	0.09	1.00	0.91	0.09
<b>Balochistan</b>	<b>2.16</b>	<b>1.93</b>	<b>0.23</b>	<b>2.17</b>	<b>1.95</b>	<b>0.22</b>
Rural	1.72	1.51	0.21	1.71	1.52	0.19
Urban	0.44	0.42	0.02	0.46	0.43	0.03

**Note:-** Figures for the year 2009-10 will not tally with the figures given in the report of LFS 2009-10 due to the revision of revised population projections of the Planning Commission.

**Source:-** Derived from Statistical Appendix Tables 6 to 6.4.

### ***Employed: Major Industry Division***

22. Employment share of *manufacturing* (13.7%), *construction* (7%) and *agriculture & allied activities* (45.1%) puts on some fractions in the same order as compared to the respective estimate of LFS 2009-10 (13.2%, 6.7%, 45.0%, ). The change in the foremost is nigh masculine, the lattermost's is equivalent by sex while the middle one's calculus is generally beholden to males. All other industry divisions slacken of sorts during the comparative periods owing to change in the shares of males. See table-13 (Figure-3) and Statistical Appendix Table-16.

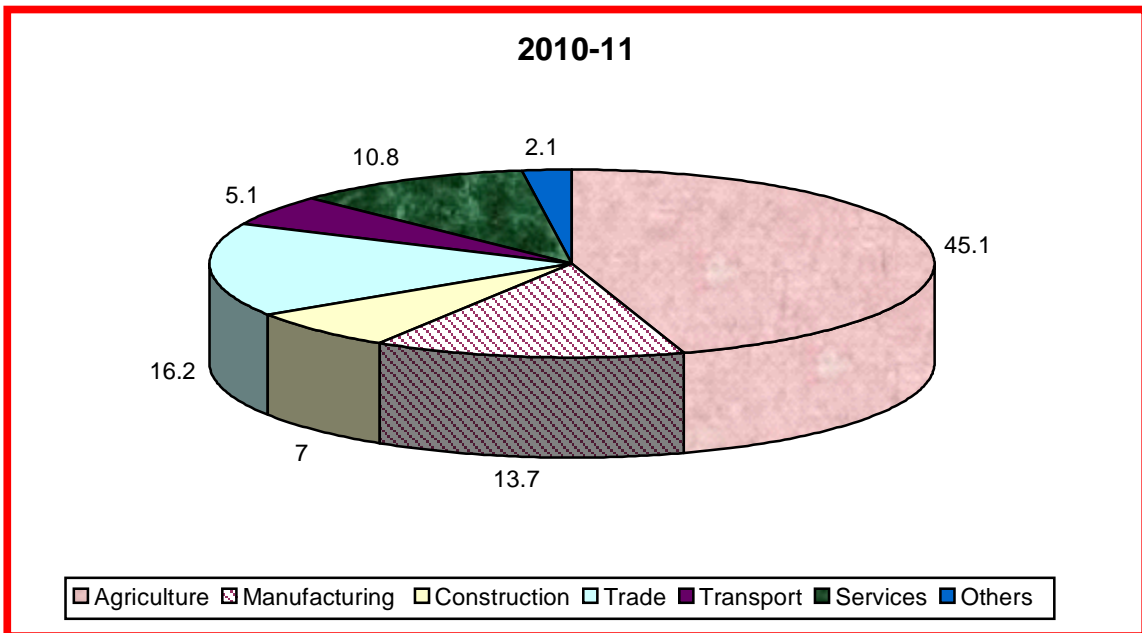
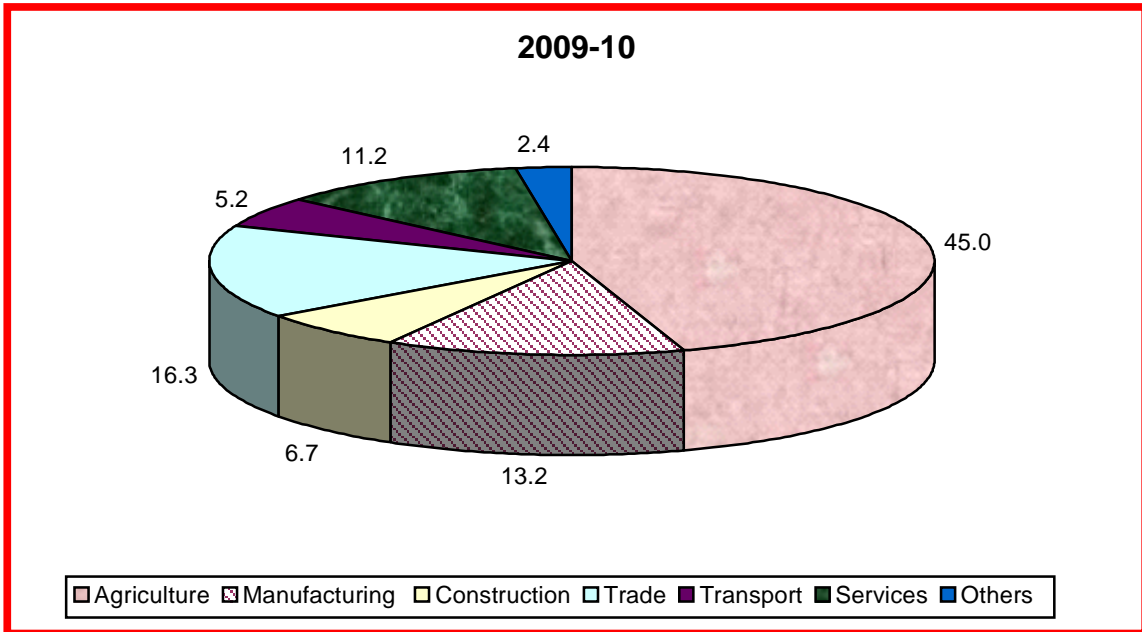
**Table-13**  
**EMPLOYED - DISTRIBUTION BY MAJOR INDUSTRY DIVISIONS**

(%)

Major Industry Divisions	2009-10			2010-11		
	Total	Male	Female	Total	Male	Female
<b>Total</b>	<b>100.0</b>	<b>100.0</b>	<b>100.0</b>	<b>100.0</b>	<b>100.0</b>	<b>100.0</b>
Agriculture/ forestry/hunting & fishing	45.0	36.6	74.9	45.1	36.2	75.4
Manufacturing	13.2	13.9	11.0	13.7	14.5	10.9
Construction	6.7	8.5	0.3	7.0	8.9	0.2
Wholesale & retail trade	16.3	20.2	2.1	16.2	20.4	1.6
Transport/storage & communication	5.2	6.6	0.3	5.1	6.6	0.1
Community/social & personal services	11.2	11.2	11.2	10.8	10.8	11.5
*Others	2.4	3.0	0.2	2.1	2.6	0.3

\* Others (includes mining & quarrying, electricity, gas & water, financing, insurance, real estate & business services and extraterritorial organizations and bodies)

**FIGURE -3 PERCENTAGE DISTRIBUTION OF EMPLOYED: MAJOR INDUSTRY DIVISIONS**



### ***Employed: Major Occupational Groups***

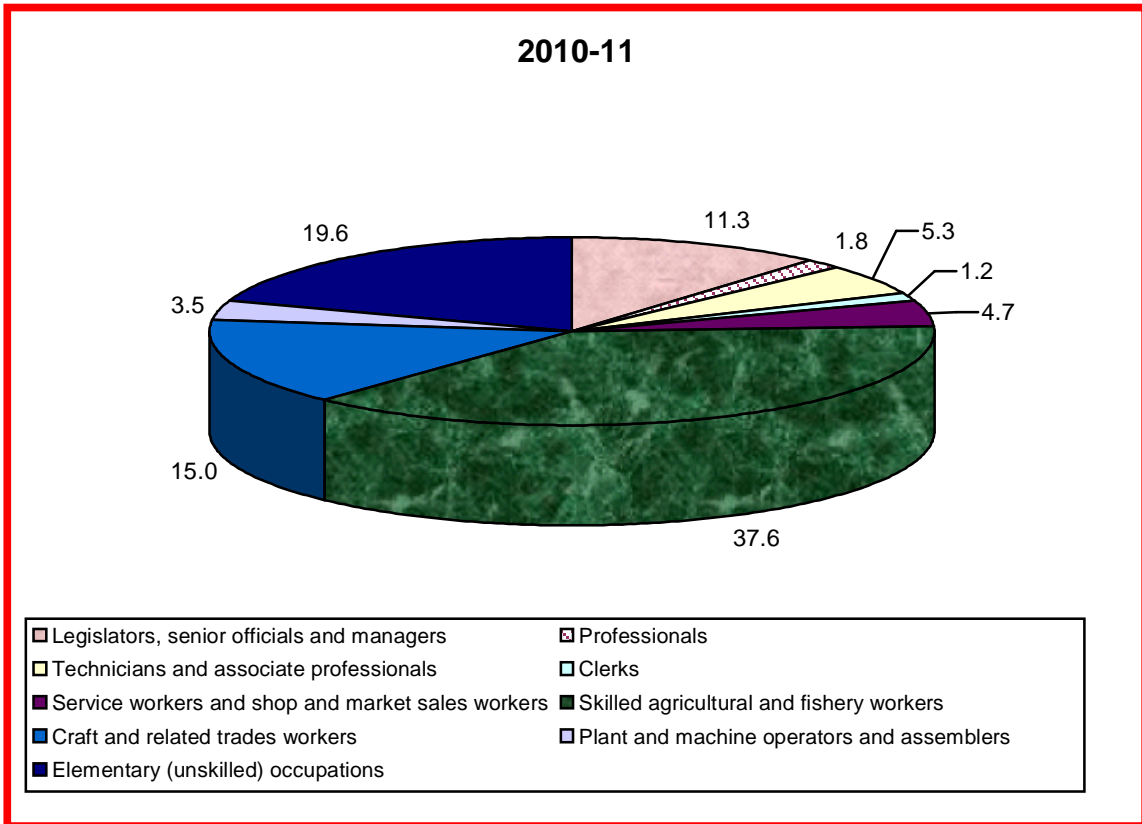
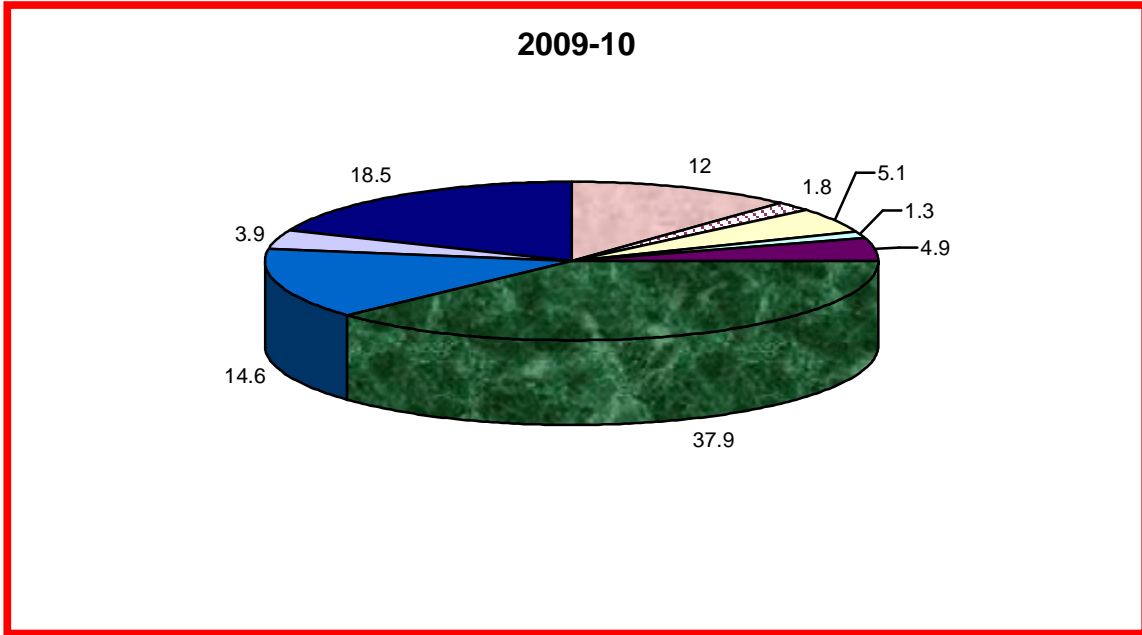
23. *Skilled agriculture & fishery workers* constitute the largest group (37.6%) of the total employed in 2010-11 followed by *elementary occupations* (19.6%), *craft & related trades workers* (15.0%), *legislator/senior officials & managers* (11.3%), *technician & associate professionals* (5.3%), *services workers* (4.7%), *plant/machine operators & assemblers* (3.5%), *professional* (1.8%) and *clerks* (1.2%). Nine-tenth of the females workers toil in *farming activities* (62.3%), *elementary occupations* (16.9%) and *craft & related trade workers* (10.5%) while, males seem to be distributed a sort of proportionately in all activities. The *elementary occupations, craft & related workers* and *technicians & associate professionals* seem to be gaining steam, *legislators/senior officials & managers* level same while the remaining groups tend to curve down during the comparative periods. See table-14 (Figure -4) and Statistical Appendix Table-17.

**Table-14**  
**EMPLOYED - DISTRIBUTION BY MAJOR OCCUPATIONAL GROUPS**

(%)

Major Occupational Groups	2009-10			2010-11		
	Total	Male	Female	Total	Male	Female
<b>Total</b>	<b>100.0</b>	<b>100.0</b>	<b>100.0</b>	<b>100.0</b>	<b>100.0</b>	<b>100.0</b>
Legislators/senior officials & managers	12.0	14.8	1.8	11.3	14.0	1.7
Professionals	1.8	2.0	1.4	1.8	1.9	1.4
Technicians & associate professionals	5.1	4.8	6.2	5.3	5.0	6.6
Clerks	1.3	1.7	0.1	1.2	1.6	0.1
Service workers/ shop & market sales workers	4.9	6.1	0.8	4.7	6.0	0.4
Skilled agricultural & fishery workers	37.9	31.0	62.7	37.6	30.4	62.3
Craft & related trades workers	14.6	15.6	10.9	15.0	16.3	10.5
Plant/ machine operators & assemblers	3.9	4.9	0.1	3.5	4.5	0.1
Elementary (unskilled) occupations	18.5	19.1	16.0	19.6	20.3	16.9

**FIGURE-4: PERCENTAGE DISTRIBUTION OF EMPLOYED: MAJOR OCCUPATIONAL GROUPS**



s

### ***Employed: Employment Status***

24. *Employees* constitute the largest group (36.0%) followed by *own account workers* (34.9%), *contributing family workers* (27.7%) and *employers* (1.4%). More than two-third females female workers toil as *contributing family workers* (63.4%) while eight out of ten males are *own account workers*(40.5%), *employees*(40.4%) and *employers*(1.8%). As for change during the comparative periods, *own account workers* (34.2%, 34.9%) and *employees* (35.4%, 36%) add some fractions, *employers* (1.3%, 1.4%) level nigh same while *contributing family workers* (29.1%, 27.7%) seem declining. See table-15 and Statistical Appendix Table-18.

**Table-15**  
**EMPLOYED - DISTRIBUTION BY EMPLOYMENT STATUS AND SEX**

Employment Status	2009-10			2010-11		
	Total	Male	Female	Total	Male	Female
<b>Total</b>	<b>100.0</b>	<b>100.0</b>	<b>100.0</b>	<b>100.0</b>	<b>100.0</b>	<b>100.0</b>
Employers	1.3	1.6	0.1	1.4	1.8	0.1
Own account workers	34.2	40.0	13.6	34.9	40.5	15.6
Contributing family workers	29.1	18.7	66.3	27.7	17.3	63.4
Employees	35.4	39.7	20.0	36.0	40.4	20.9

**Note:-** “Other” due to negligible size is included in own account workers.

### ***Employed: Number of Hours Worked During the Week***

25. About one in a hundred and forty (0.7%) of the currently employed persons constitute the group of people who had a job attachment but did not work last week due to certain reasons. Nigh two out of seven (28.4%) worked 56 hours or more a week. More than two out of four (84.9%) worked more than “35 hours a week”– the duration representing full (time related) employment. As for provinces, the proportion of “not worked” ranges from minimum in Sindh and Balochistan (0.2%) to maximum in KP (1.7%) with Punjab (0.7%) lying in between. For those worked more the 56 hours a week, Sindh’s share is the maximum (31.1%) and KP’s minimum (18.6%) with Punjab (29.6%) and Balochistan (20.9%) bridging the extremes in the same order. Generally, the profile of comparative surveys is almost similar. See table-16 and Statistical Appendix Tables-18 to 18.4.



**Table-16**  
**EMPLOYED - DISTRIBUTION BY HOURS WORKED, 2010-11**

(%)

<b>Area/ Province</b>	<b>Total employed</b>	<b>Not worked</b>	<b>Less than 15 hours</b>	<b>15-24 Hours</b>	<b>25-34 hours</b>	<b>35-41 Hours</b>	<b>42-48 Hours</b>	<b>49-55 Hours</b>	<b>56 hours &amp; above</b>
<b>Pakistan</b>	<b>100.0</b>	<b>0.7</b>	<b>1.6</b>	<b>5.4</b>	<b>7.4</b>	<b>20.4</b>	<b>24.5</b>	<b>11.6</b>	<b>28.4</b>
Rural	100.0	0.7	2.0	6.8	8.7	23.3	22.5	11.1	24.9
Urban	100.0	0.6	0.7	2.2	4.2	13.6	29.1	12.7	36.8
<b>Punjab</b>	<b>100.0</b>	<b>0.7</b>	<b>1.6</b>	<b>6.3</b>	<b>8.2</b>	<b>18.7</b>	<b>23.5</b>	<b>11.5</b>	<b>29.6</b>
Rural	100.0	0.7	1.8	7.6	9.4	20.4	21.6	11.3	27.2
Urban	100.0	0.7	0.9	2.8	4.9	14.5	28.3	12.0	35.9
<b>Sindh</b>	<b>100.0</b>	<b>0.2</b>	<b>1.2</b>	<b>3.0</b>	<b>5.4</b>	<b>22.4</b>	<b>23.9</b>	<b>12.8</b>	<b>31.1</b>
Rural	100.0	0.2	1.7	4.6	6.9	29.9	20.7	12.0	24.1
Urban	100.0	0.2	0.4	0.9	3.2	11.7	28.4	14.1	41.2
<b>KP</b>	<b>100.0</b>	<b>1.7</b>	<b>3.3</b>	<b>8.1</b>	<b>9.2</b>	<b>23.6</b>	<b>26.2</b>	<b>9.3</b>	<b>18.6</b>
Rural	100.0	1.5	3.7	9.0	10.1	24.7	25.1	8.8	17.0
Urban	100.0	2.2	1.2	4.0	4.5	17.8	31.7	11.9	26.5
<b>Balochistan</b>	<b>100.0</b>	<b>0.2</b>	<b>0.4</b>	<b>0.8</b>	<b>3.5</b>	<b>24.3</b>	<b>38.0</b>	<b>11.7</b>	<b>20.9</b>
Rural	100.0	0.2	0.4	0.9	3.9	27.9	35.2	11.3	20.2
Urban	100.0	0.3	0.4	0.3	2.1	11.1	48.7	13.4	23.7

Note:- Total may not add to 100 due to rounding effect.

### ***Employed: Informal Sector***

26. Informal sector accounts for more than seven-tenth (73.8%) of non-agricultural employment, more in rural (76.5%) than in urban areas (71.2%). On the other hand, formal sector activities are concentrated more in urban areas (28.8%) than in rural areas (23.5%). Females in comparison with respective share of males fare more numerous in urban formal (36.9%) and less in rural formal (21%) while, males are more numerous in urban informal (72.4%) than in rural informal (76.2%) compared to respective shares of females. Informal sector waxes while formal wanes. Males shares are more in tandem while shares of females shares situate dissonantly-recede in the former while rise in the latter. See table-17 and Statistical Appendix Table-20.

**Table-17**  
**FORMAL AND INFORMAL SECTORS - DISTRIBUTION OF NON-AGRICULTURE WORKERS**  
 (%)

Sector	2009-10			2010-11		
	Total	Male	Female	Total	Male	Female
<b>Total</b>	<b>100.0</b>	<b>100.0</b>	<b>100.0</b>	<b>100.0</b>	<b>100.0</b>	<b>100.0</b>
Formal	26.7	26.7	26.9	26.2	25.9	28.9
Informal	73.3	73.3	73.1	73.8	74.1	71.1
<b>Rural</b>	<b>100.0</b>	<b>100.0</b>	<b>100.0</b>	<b>100.0</b>	<b>100.0</b>	<b>100.0</b>
Formal	23.7	23.8	22.3	23.5	23.8	21.0
Informal	76.3	76.2	77.7	76.5	76.2	79.0
<b>Urban</b>	<b>100.0</b>	<b>100.0</b>	<b>100.0</b>	<b>100.0</b>	<b>100.0</b>	<b>100.0</b>
Formal	29.6	29.4	31.6	28.8	27.6	36.9
Informal	70.4	70.6	68.4	71.2	72.4	63.1

Source: - Derived from Statistical Appendix Table-20.

### ***Major Industry Divisions: Informal Sector***

27. According to size of respective shares, the industry groupings form a descending sequence of *wholesale and retail trade* (38.9%) *manufacturing* (22.3%), *construction* (16.1%), *transport* (10.7%) and *community, social & personal services* (10.0%). The *other* category (comprising of *mining & quarrying; electricity, gas & water and finance, insurance, real estate & business services*) accounts for two percent. *Manufacturing*, accounts for more than half (57.4%) of females as compared to about one-fifth (18.6%) of males, *wholesale & retail trade*, employs more than two-fifth (42.1%) of males compared to about one-tenth (9.2%) of females while *community/social & personal services* embrace near three-tenth (31.9%) of females. The foremost trends up while the middle one and the lattermost curve down. *Transport, storage & communication* level same approximately while *construction* tends to rise during the comparative periods. See table-18 and Statistical Appendix Table-21.

**Table-18**  
**INFORMAL SECTORS WORKERS - DISTRIBUTION BY MAJOR INDUSTRY DIVISIONS**

(%)

Major Industry Divisions	2009-10			2010-11		
	Total	Male	Female	Total	Male	Female
<b>Total</b>	<b>100.0</b>	<b>100.0</b>	<b>100.0</b>	<b>100.0</b>	<b>100.0</b>	<b>100.0</b>
Manufacturing	21.4	17.8	54.6	22.3	18.6	57.4
Construction	15.8	17.4	1.2	16.1	17.7	0.9
Wholesale & retail trade	39.2	42.2	11.5	38.9	42.1	9.2
Transport, storage & communication	10.8	11.9	0.8	10.7	11.8	0.4
Community, social & personal services	10.8	8.5	31.7	10.0	7.6	31.9
* Others	2.0	2.2	0.2	2.0	2.2	0.2

\*Others (includes mining & quarrying; electricity, gas & water and finance, insurance, real estate & business services)

### ***Major Occupational Groups: Informal Sector***

28. About three in ten (31.1%) are reported as *craft & related trade workers*, while near one-half comprises *legislator/senior officials & managers* (24.3%) and *elementary (unskilled) occupations* (23.2%). *Services workers/shop & market sales workers* come fourth (8.7%) followed by *plant/machine operators & assemblers* (6.0%), *technicians & associate professionals* (4.5%) and *professionals* (1.9%). About six-tenth (56.9%) of females compared to over three-tenth (28.3%) of males are engaged in *craft & related trade activities*. *Technicians and associate professionals* are also female-intensive while males dominate in rest of occupations though, *skilled agriculture & fishery workers* do exhibit gender even composition. *Plant/machine operators & assemblers* and *legislators/senior officials and managers* are exceptionally male-intensive in the same order. As for change during the comparative periods, the feminine groups wax while masculine wane. See table-19 and Statistical Appendix Table-22.

**Table-19**  
**INFORMAL SECTORS WORKERS - DISTRIBUTION BY MAJOR OCCUPATIONAL GROUPS**  
 (%)

Major Occupational Groups	2009-10			2010-11		
	Total	Male	Female	Total	Male	Female
<b>Total</b>	<b>100.0</b>	<b>100.0</b>	<b>100.0</b>	<b>100.0</b>	<b>100.0</b>	<b>100.0</b>
Legislators/senior officials & managers	26.0	28.0	8.2	24.3	26.0	7.6
Professionals	2.2	2.1	3.4	1.9	1.8	3.3
Technicians & associate professionals	4.2	3.4	10.9	4.5	3.8	11.8
Clerks	0.2	0.2	0.2	0.2	0.2	0.2
Service workers/ shop & market sales workers	9.0	9.6	3.6	8.7	9.4	2.2
Skilled agricultural & fishery workers	0.1	0.1	0.2	0.1	0.1	0.1
Craft & related trades workers	29.8	27.0	54.9	31.1	28.3	56.9
Plant/ machine operators & assemblers	6.4	7.1	0.4	6.0	6.6	0.2
Elementary (unskilled) occupations	22.1	22.5	18.2	23.2	23.8	17.7

### ***Employment Status: Informal Sector***

29. The employment status chiefly consists in the categories of *employees* (44.0%) and *own account workers* (42.7%). The former constitutes the largest share of females (44.9%) and latter, of males (43.4%). About one in ten workers (10.4%) is reported as *contributing family worker* and near one in thirty-three (2.9%) are comprised of *employers*. The female *contributing family workers* (18%) are about twice of males (9.6%) while *employers* are predominantly male intensive. As far change during the comparative periods, all seem to be waxing except *contributing family workers*. See table-20 and Statistical Appendix Table-23.

**Table-20**  
**INFORMAL SECTORS WORKERS – DISTRIBUTION BY EMPLOYMENT STATUS**  
 (%)

Employment Status	2009-10			2010-11		
	Total	Male	Female	Total	Male	Female
<b>Total</b>	<b>100.0</b>	<b>100.0</b>	<b>100.0</b>	<b>100.0</b>	<b>100.0</b>	<b>100.0</b>
Employers	2.5	2.7	0.7	2.9	3.1	0.7
Own account workers	42.0	43.1	31.7	42.7	43.4	36.4
Contributing family workers	11.2	10.3	20.0	10.4	9.6	18.0
Employees	44.3	43.9	47.6	44.0	43.9	44.9

### ***Unemployment Rates: Overall***

30. The social security net in Pakistan is far from exhaustive. The distribution of assets is highly skewed and something to fall back on in rainy season is simply not available to most of the populace. Thus, a miniscule minority can afford to remain off the work. Further, employment scene is preponderated by agriculture and informal activities with low threshold of entry, exit and, paraphernalia of requisites. As such, most of the people tend to get engaged into some sort of economic activities irrespective of any considerations regarding the size of reward and working age, in order to make both the ends meet. Thus, unemployment rate in Pakistan tends to be estimated lower than perceived.

31. Unemployment rate (6.0%) fare higher than that of the previous survey (5.6%). Opposite configuration obtains in the case of males and females-rise in the former (4.4%), 5.1%) more than offsets the decline in the latter (9.5%, 8.9%). Urban rates follow the similar pattern while rural ones fare nigh equivalently. See table-21.

**Table-21**  
**UNEMPLOYMENT RATES - BY AREA AND SEX**

Area/Sex	2009-10			2010-11		
	Total	Male	Female	Total	Male	Female
<b>Pakistan</b>	<b>5.6</b>	<b>4.4</b>	<b>9.5</b>	<b>6.0</b>	<b>5.1</b>	<b>8.9</b>
Rural	4.8	3.9	7.2	4.7	4.0	6.4
Urban	7.2	5.3	20.8	8.8	7.1	20.7

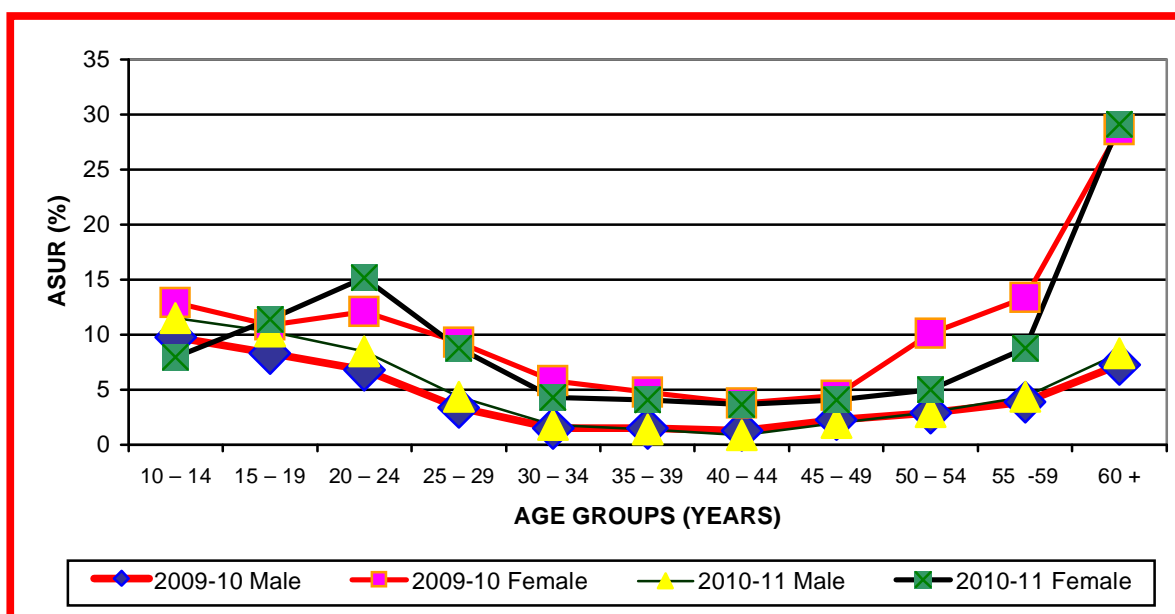
### ***Unemployment Rates: Age Specific***

32. The comparative age specific unemployment rates of *early teens* (10-14) and *early thirties to latter fifties* (30-59) are on wane while that of *latter teens to latter twenties* (15-29) are on wane while those of *latter teen to early twenties* and *sixties & above* tend to scale up. Comparative change in the age specific rates appears more pronounced in the case of females than males unemployment rates. See table-22 (figure 5) and Statistical Appendix Table-14.

**Table-22**  
**UNEMPLOYMENT RATES - BY SEX AND AGE**

Age Groups	2009-10			2010-11		
	Total	Male	Female	Total	Male	Female
10 – 14	10.8	9.8	12.9	10.3	11.5	8.0
15 – 19	8.9	8.3	10.9	10.6	10.3	11.4
20 – 24	7.9	6.8	12.1	10.0	8.5	15.2
25 – 29	4.8	3.4	9.3	5.4	4.4	8.8
30 – 34	2.6	1.5	5.8	2.4	1.8	4.3
35 – 39	2.3	1.5	4.8	2.1	1.4	4.1
40 – 44	1.8	1.3	3.8	1.6	0.9	3.7
45 – 49	2.8	2.3	4.5	2.5	2.0	4.1
50 – 54	4.4	2.9	10.1	3.4	3.0	5.0
55 – 59	5.9	3.9	13.4	5.3	4.4	8.8
60 years and above	10.6	7.3	28.6	11.9	8.3	29.1

**FIGURE-5: AGE SPECIFIC UNEMPLOYMENT RATES (ASUR) BY SEX FOR PAKISTAN**



***Unemployed: Absolute Figures***

33. The volume of unemployed persons increases from 3.12 million in 2009-10 to 3.40 million in 2010-11. Areas and sex wise, the change is more of urban and male provenance. Volume of unemployed persons increases in Punjab, more in rural than urban areas, and, urban areas of Sindh & KP while, decreases in rural areas of KP & Sindh and, levels high

same in Balochistan. Sex specifically, the change in the comparative profile of Punjab, KP and Sindh is more in the case of males while, Balochistan's is gender equivalent.

**Table-23**  
**UNEMPLOYED - PAKISTAN AND PROVINCES**

(Million)

Province/Area	Unemployed					
	2009-10			2010-11		
	Total	Male	Female	Total	Male	Female
<b>Pakistan</b>	<b>3.12</b>	<b>1.91</b>	<b>1.21</b>	<b>3.40</b>	<b>2.22</b>	<b>1.18</b>
Rural	1.89	1.12	0.77	1.85	1.14	0.71
Urban	1.23	0.79	0.44	1.55	1.08	0.47
<b>Punjab</b>	<b>1.94</b>	<b>1.18</b>	<b>0.76</b>	<b>2.10</b>	<b>1.31</b>	<b>0.79</b>
Rural	1.16	0.68	0.48	1.25	0.76	0.49
Urban	0.78	0.50	0.28	0.85	0.55	0.30
<b>Sindh</b>	<b>0.57</b>	<b>0.35</b>	<b>0.22</b>	<b>0.70</b>	<b>0.54</b>	<b>0.16</b>
Rural	0.24	0.12	0.12	0.15	0.10	0.05
Urban	0.33	0.23	0.10	0.55	0.44	0.11
<b>KP</b>	<b>0.55</b>	<b>0.35</b>	<b>0.20</b>	<b>0.53</b>	<b>0.32</b>	<b>0.21</b>
Rural	0.45	0.29	0.16	0.41	0.25	0.16
Urban	0.10	0.06	0.04	0.12	0.07	0.05
<b>Balochistan</b>	<b>0.06</b>	<b>0.03</b>	<b>0.03</b>	<b>0.07</b>	<b>0.05</b>	<b>0.02</b>
Rural	0.04	0.02	0.02	0.04	0.03	0.01
Urban	0.02	0.01	0.01	0.03	0.02	0.01

**Note:-** Figures for the year 2009-10 will not tally with the figures given in the report of LFS 2009-10 due to the revision of revised population projections of the Planning Commission.

**Source:-** Derived from Statistical Appendix Tables 6 to 6.4 .

### ***Underemployment Rates: Time-related***

34. Underemployment rates decrease from 1.25% in 2009-10 to 1.19% in 2010-11. Sex wise, the increase in the case of females is more than offset by decrease in the males underemployment. Area wise underemployment rates curve down equivalently. Further, change in the area wise underemployment rates is more visible in the case of females than males. Given the stagnating economic scenario, decreasing underemployment rates seems to signify increasing recourse to multiple jobs to help grapple with the rising cost of living. See table-24.

**Table-24**  
**UNDEREMPLOYMENT (TIME-RELATED) RATES OF PAKISTAN- BY AREA AND GENDER**  
(%)

Areas	2009-10			2010-11		
	Total	Male	Female	Total	Male	Female
Pakistan	1.25	1.10	1.73	1.19	0.93	2.09
Rural	1.39	1.31	1.61	1.34	1.12	1.92
Urban	0.91	0.71	2.31	0.86	0.56	2.90

**Source:-** Derived from Statistical Appendix Tables 6 and 24.

### ***Employed: Occupational Safety and Health***

35. About one in thirty (3.5%) employed persons report some sort of occupational injury/disease in the 12 months preceding the date of enumeration that resulted into the loss of working time or the consultation with a practitioner. The percentage suffered finds male workers more vulnerable (4.1%) relative to female workers (1.5%). Similarly, rural workers (4.0%) are more vulnerable than urban workers (2.3%). Vulnerability seems to be rising during the comparative period, across the area and gender equivalently. See table-28.

**Table-25**  
**OCCUPATIONAL INJURIES/DISEASES - EMPLOYED PERSONS 10 + YEARS OF AGE BY STATUS**  
(%)

Status of Injuries/ Diseases	2009-10			2010-11		
	Total	Male	Female	Total	Male	Female
<b>Total</b>	<b>100.0</b>	<b>100.0</b>	<b>100.0</b>	<b>100.0</b>	<b>100.0</b>	<b>100.0</b>
Suffered	2.9	3.5	0.9	3.5	4.1	1.5
Not suffered	97.1	96.5	99.1	96.5	95.9	98.5
<b>Rural</b>	<b>100.0</b>	<b>100.0</b>	<b>100.0</b>	<b>100.0</b>	<b>100.0</b>	<b>100.0</b>
Suffered	3.4	4.3	1.0	4.0	4.9	1.7
Not suffered	96.6	95.7	99.0	96.0	95.1	98.3
<b>Urban</b>	<b>100.0</b>	<b>100.0</b>	<b>100.0</b>	<b>100.0</b>	<b>100.0</b>	<b>100.0</b>
Suffered	1.8	2.0	0.1	2.3	2.5	0.6
Not suffered	98.2	98.0	99.9	97.7	97.5	99.4

### ***Major Industry Divisions: Occupational Safety and Health***

36. Mainly, the sufferers belong to *agriculture* (49.8%), *manufacturing* (15.8%), *construction* (13.0%), *wholesale & retail trade* (10.3%) and *transport/storage & communication* (7.1%). Females are twice (88.2%) as exposed to risk as males (45.6%) in *agriculture*. Contrarily, males are more vulnerable in *manufacturing* (16.7%, 7.1%) and *community/social & personal services* (3.4%, 1.8%). The activities of *construction, wholesale & retail trade* and *transport/storage & communication* are generally masculine in the composition of sufferers. The comparative risk profile of *manufacturing* deteriorates a sort while those of remaining grouping seem to be improving. See table-26 and Statistical Appendix Table-29.



**Table-26**  
**OCCUPATIONAL INJURIES/DISEASES -DISTRIBUTION OF EMPLOYED PERSONS BY MAJOR**  
**INDUSTRY DIVISIONS**

(%)

Major Industry Divisions	2009-10			2010-11		
	Total	Male	Female	Total	Male	Female
<b>Total</b>	<b>100.0</b>	<b>100.0</b>	<b>100.0</b>	<b>100.0</b>	<b>100.0</b>	<b>100.0</b>
Agriculture, forestry, hunting and fishing	50.2	47.0	94.3	49.8	45.6	88.2
Mining & quarrying	0.1	0.1	-	0.2	0.3	-
Manufacturing	12.8	13.6	2.0	15.8	16.7	7.1
Electricity, gas and water	0.4	0.4	-	0.2	0.2	-
Construction	14.3	15.2	1.3	13.0	14.5	0.3
Wholesale & retail trade and restaurants & hotels	10.6	11.3	0.6	10.3	11.2	2.4
Transport, storage and communication	8.0	8.6	-	7.1	7.8	0.2
Financing, insurance, real estate and business services	0.1	0.1	-	0.3	0.3	-
Community, social and personal services	3.6	3.7	1.8	3.3	3.4	1.8

**Note:-** (-) Stands for no information

***Major Occupational Groups: Occupational Safety and Health***

37. The major groupings of the sufferers comprise *skilled agriculture & fishery activities* (44.6%), *elementary occupations* (22.3%), *craft & related trades workers* (20.5%), *plant and machinery operator* (4.9%) and *legislators/senior officials & managers* (4.1%). Risk profile of the foremost, home to about four-fifth (78.5%) of female sufferers, deteriorates, though for males. *Elementary occupations* betray similar pattern by sex though, level same in toto. As for the masculine groups of *plant/machine operators & assemblers* and *legislators/senior officials & managers*, both indicate improvement of sorts. See table-27 and Statistical Appendix Table-30.

**Table-27**  
**OCCUPATIONAL INJURIES/DISEASES -DISTRIBUTION OF EMPLOYED PERSONS BY MAJOR**  
**OCCUPATIONAL GROUPS**

(%)

Major Occupational Groups	2009-10			2010-11		
	Total	Male	Female	Total	Male	Female
<b>Total</b>	<b>100.0</b>	<b>100.0</b>	<b>100.0</b>	<b>100.0</b>	<b>100.0</b>	<b>100.0</b>
Legislators/senior officials & managers	5.5	5.9	0.6	4.1	4.4	1.1
Professionals	0.1	0.1	-	0.3	0.3	-
Technicians & associate professionals	0.9	1.0	-	1.2	1.3	0.3
Clerks	0.2	0.2	-	0.2	0.2	-
Service workers/ shop & market sales workers	3.1	3.4	-	1.9	2.2	-
Skilled agricultural & fishery workers	43.5	40.6	83.9	44.6	40.9	78.5
Craft & related trades workers	18.9	20.1	2.0	20.5	22.0	6.6
Plant/ machine operators & assemblers	5.5	5.9	-	4.9	5.4	0.2
Elementary (unskilled) occupations	22.3	22.9	13.5	22.3	23.3	13.3

**Note:-** (-) Stands for insignificant or no information.

### ***Employment Status: Occupational Safety and Health***

38. According to the relative size of the risk profile, *own account workers* (40.9%), *employees* (35.1%) and *contributing family workers* (22.0%) take exhaustive account of the sufferers in the same order. The 1<sup>st</sup> two categories seem to be getting less, while the last one more, riskier during the comparative periods. The change is male-disfavouring in the foremost, equivalent by sex in the middle one and female-disfavouring in the lattermost case. Employers, due to their minuscule size, do not behove of forming any pattern. See table-28 and Statistical Appendix Table-31.

**Table-28**  
**OCCUPATIONAL INJURIES/DISEASES - DISTRIBUTION OF EMPLOYED PERSONS BY EMPLOYMENT STATUS**

Employment Status	2009-10			2010-11		
	Total	Male	Female	Total	Male	Female
<b>Total</b>	<b>100.0</b>	<b>100.0</b>	<b>100.0</b>	<b>100.0</b>	<b>100.0</b>	<b>100.0</b>
Employers	0.6	0.6	-	1.0	1.1	-
Own account workers	41.6	43.8	10.2	40.9	44.9	4.0
Contributing family workers	20.2	15.8	82.9	22.0	14.8	87.7
Employees	37.6	39.8	6.9	35.1	39.2	8.3

**Note:-** (-) Stands for no information.

### ***Types of Treatment Received: Occupational Safety and Health***

39. Majority (52.6%) of the sufferers is reported to have *consulted a doctor* or other medical professionals, near one-in-ten (8.9%) get *hospitalized* and about one-fourth (23.3%) *take time off work*. Vulnerability rises in the 1<sup>st</sup> and last category and declines in the middle one. The change is females-favouring in the foremost, sex-neutral in the middle one while male-favouring in the lattermost category. The remaining one-seventh (15.2%) did not avail themselves of any of the aforementioned options, increase over time alluding to a sort of increasing marginalization at the workplace. See table-29 and Statistical Appendix Table-32.

**Table-29**  
**OCCUPATIONAL INJURIES/DISEASES - DISTRIBUTION OF EMPLOYED PERSONS 10 + YEARS OF AGE BY TYPES OF TREATMENT RECEIVED**

Types of Treatment Received	2009-10			2010-11		
	Total	Male	Female	Total	Male	Female
<b>Total</b>	<b>100.0</b>	<b>100.0</b>	<b>100.0</b>	<b>100.0</b>	<b>100.0</b>	<b>100.0</b>
Hospitalized	11.0	11.3	7.2	8.9	9.2	5.2
Consulted a Doctor or other Medical Professional	51.3	52.1	39.9	52.6	55.3	27.9
Took time off work	22.4	21.9	43.8	23.3	19.6	57.5
None	14.3	14.7	9.1	15.2	15.9	9.4

## *Wages*

### *Major Industry Division: Wages*

40. Generally, size of wage seems to higher in tertiary activities followed by secondary and primary assignments. The size of wage also appears to be influenced positively by the element of white-collar ness of an industry/division. The gender differential in wages seems to be influenced by the gender composition of group. Arguably, the nominal wage is trending up during the comparative period. Since females constitute much lower proportion of wage earners, a sort of anomalous position in their case is observed in certain categories, which may be attributed to sampling effect and consequential scariness of response. See table-30 and Statistical Appendix Table-38.

**Table-30**  
**AVERAGE MONTHLY WAGES OF EMPLOYEES BY MAJOR INDUSTRY DIVISIONS**

(Rs)

Major Industry Divisions	2009-10			2010-11		
	Total	Male	Female	Total	Male	Female
<b>Total</b>	<b>8623</b>	<b>9017</b>	<b>5821</b>	<b>9715</b>	<b>10211</b>	<b>6422</b>
Agriculture, forestry, hunting and fishing	4968	5730	3358	5649	6673	3577
Mining & quarrying	6976	6963	9600	12000	12000	-
Manufacturing	7534	8080	3437	8472	9085	3600
Electricity, gas and water	14548	14398	25325	17235	17242	16896
Construction	7389	7397	6207	8272	8270	8869
Wholesale & retail trade and restaurants & hotels	6609	6660	4013	6862	6864	6684
Transport, storage and communication	9396	9328	13685	10378	10356	13838
Financing, insurance, real estate and business services	18174	17897	31240	20695	20705	20269
Community, social and personal services	10984	11771	7761	13120	14450	8912

### *Major Occupation Group: Wages*

41. As stated earlier, wages seem to be associated positively with the element of “white-collar ness” in an occupation. Similarly, the gender differentials in the wages bespeak nexus with the gender composition of an occupational group. The more a group is masculine, the less it is likely to find females in high paid assignments and thus higher is the average wage of males as compared to that of females. This notwithstanding, data on females, being wage earners of convenience, does not befit the consideration of trend assessment. However, the feminine group of *elementary occupations* seems to be an exception though its anomalous position can be explained in term of the greater number of in and out door chores the males are likely to perform as compared to females, in our socio-cultural setting. As for changes during the comparative periods, nominal wages seem to be trending up arguably. See table-31 and Statistical Appendix Table-39.

**Table-31**  
**AVERAGE MONTHLY WAGES OF EMPLOYEES BY MAJOR OCCUPATIONAL GROUPS**

(Rs)

<b>Major Occupational Groups</b>	<b>2009-10</b>			<b>2010-11</b>		
	<b>Total</b>	<b>Male</b>	<b>Female</b>	<b>Total</b>	<b>Male</b>	<b>Female</b>
<b>Total</b>	<b>8623</b>	<b>9017</b>	<b>5821</b>	<b>9715</b>	<b>10211</b>	<b>6422</b>
Legislators/senior officials & managers	21688	21707	21365	25835	25757	27527
Professionals	17761	17510	19463	21117	21413	19584
Technicians & associate professionals	12154	12385	8071	13164	14914	9261
Clerks	11125	12181	10905	14006	14016	13649
Service workers/ shop & market sales workers	7942	7989	5867	8546	8557	7750
Skilled agricultural & fishery workers	7220	7182	8263	7804	7959	5703
Craft & related trades workers	7586	8141	3167	8222	8810	3248
Plant/ machine operators & assemblers	8560	8577	6024	9049	9044	10208
Elementary (unskilled) occupations	5716	6118	3474	6658	7244	3644