



Monthly Review on Price Indices



April, 2019
(Base 2007-08)

Government of Pakistan
Ministry of Planning, Development and Reform
Pakistan Bureau of Statistics
Islamabad

Inflation in Brief

1. CPI inflation General increased by 8.8% on year-on-year basis in April, 2019 as compared to an increase of 9.4% in the previous month and 3.7% in April 2018. On month-on-month basis, it increased by 1.3% in April 2019 as compared to an increase of 1.4% in the previous month and an increase of 1.8% in corresponding month i.e. April 2018.
2. Core inflation measured by non-food non-energy CPI (Core NFNE) increased by 7.0% on (YoY) basis in April 2019 as compared to an increase of 8.5% in the previous month and 7.0% in April 2018. On (MoM) basis, it increased by 1.0% in April 2019 as compared to an increase of 0.5% in previous month, and an increase of 2.5% in corresponding month of last year i.e. April 2018.
3. Core inflation, measured by 20% weighted trimmed mean CPI (Core Trimmed) increased by 7.2% on (YoY) basis in April 2019 as compared to 7.9% in the previous month and by 5.0% in April 2018. On (MoM) basis, it increased by 0.9% in April 2019 as compared to an increase of 0.4% in the previous month and an increase of 1.6% in corresponding month of last year i.e. April 2018.
4. The CPI by Income Quintiles and Commodity Groups for April 2019 (MoM and YoY) is placed at **Annexure-C**.
5. SPI inflation on YoY basis increased by 9.3% in April 2019 as compared to an increase of 8.8% a month earlier and a decrease of 0.5% in April 2018. On MoM basis, it increased by 0.9% as compared to an increase of 1.6% in the previous month and an increase of 0.4% in corresponding month of last year i.e. April 2018.
6. WPI inflation on YoY basis increased by 13.8% in April 2019 as compared to an increase of 12.6% a month earlier and an increase of 4.0% in April 2018. WPI inflation on MoM basis increased by 2.3% in April 2019 as compared to an increase of 1.7% a month earlier and an increase of 1.3% in corresponding month of last year i.e. April 2018.
7. Figures 1 and 2 show graphically the data of Table1. Table1.1 shows "Period Average" and "YoY" percent changes in indices of three years.

Table 1: Inflation (%) (Base 2007-08)														
Period	CPI						Core Inflation				SPI**		WPI	
	General		Food		Non-food		NFNE*		Trimmed		YoY	MoM	YoY	MoM
	YoY	MoM	YoY	MoM	YoY	MoM	YoY	MoM	YoY	MoM				
Mar-18	3.2	0.3	0.1	-0.3	5.4	0.7	5.8	0.7	4.1	0.2	-1.8	-0.6	3.6	0.2
Apr-18	3.7	1.8	-0.2	1.5	6.4	2.1	7.0	2.5	5.0	1.6	-0.5	0.4	4.0	1.3
May-18	4.2	0.5	1.0	1.0	6.4	0.2	7.0	0.2	5.1	0.3	0.5	0.1	5.6	1.3
Jun-18	5.2	0.6	3.0	0.8	6.7	0.4	7.1	0.3	5.4	0.2	1.9	1.8	7.6	1.5
Jul-18	5.8	0.9	3.5	0.6	7.4	1.2	7.6	1.2	5.9	0.9	3.6	1.2	10.5	2.4
Aug-18	5.8	0.2	3.3	0.2	7.6	0.2	7.7	0.2	5.9	0.2	3.3	0.2	11.0	0.8
Sep-18	5.1	-0.1	1.4	-0.7	7.7	0.3	8.0	0.4	5.8	0.1	1.0	-0.1	9.2	-1.5
Oct-18	6.8	2.3	2.7	1.9	9.6	2.6	8.2	1.1	6.7	0.8	1.3	1.1	13.1	4.2
Nov-18	6.5	0.1	1.8	-0.5	9.8	0.5	8.3	0.4	6.7	0.3	1.3	0.3	13.5	0.7
Dec-18	6.2	-0.4	0.9	-1.4	9.8	0.2	8.4	0.3	6.9	0.3	2.0	0.0	12.1	-0.9
Jan-19	7.2	1.0	2.4	0.3	10.5	1.4	8.7	1.1	7.7	1.0	3.7	0.6	9.9	-0.2
Feb-19	8.2	0.6	5.0	1.4	10.4	0.1	8.8	0.2	7.7	0.2	6.5	1.5	11.0	0.9
Mar-19	9.4	1.4	8.4	2.9	10.1	0.5	8.5	0.5	7.9	0.4	8.8	1.6	12.6	1.7
Apr-19	8.8	1.3	8.6	1.7	9.0	1.0	7.0	1.0	7.2	0.9	9.3	0.9	13.8	2.3

*NFNE is non-food non-energy, ** SPI for quintile 1. Digits 0.0* are due to rounding off.

Table 1.1: Period Average and YoY % Changes of Indices (Base 2007-08)						
Index	Average July- April % changes			April over April % changes		
	2018-19	2017-18	2016-17	2019	2018	2017
CPI	7.00	3.77	4.09	8.82	3.68	4.78
SPI	4.05	0.81	1.51	9.28	-0.47	2.30
WPI	11.69	2.83	4.00	13.81	4.04	5.97

Figure 1: CPI Inflation YoY, Special Indices

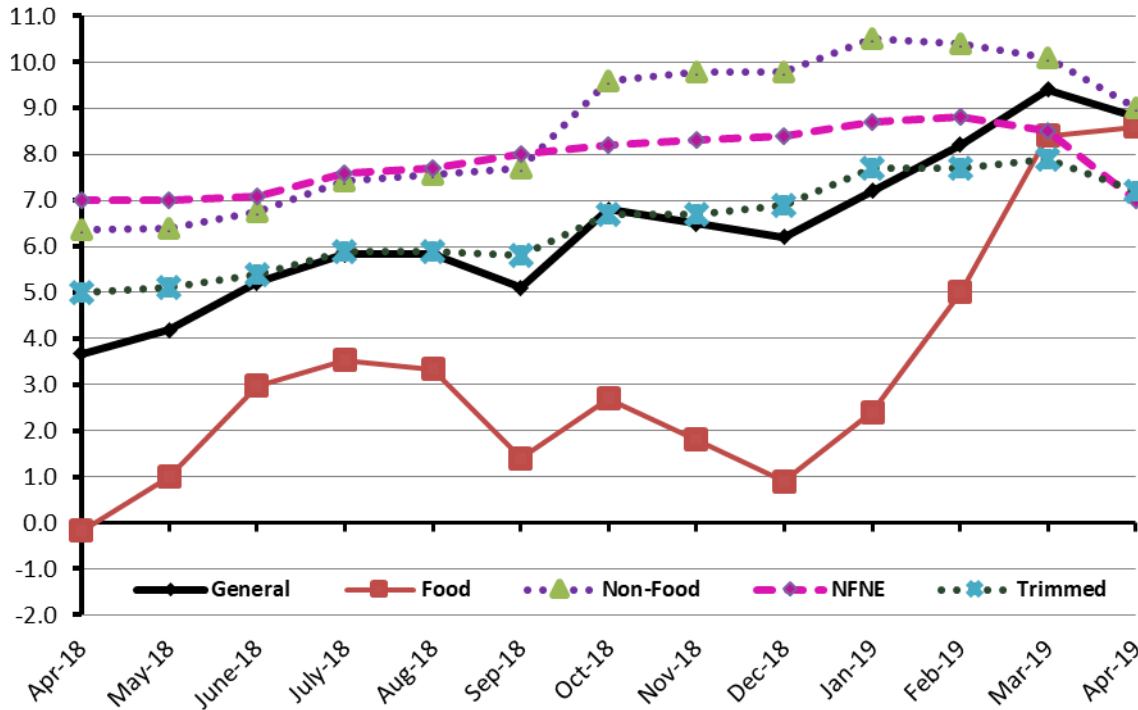
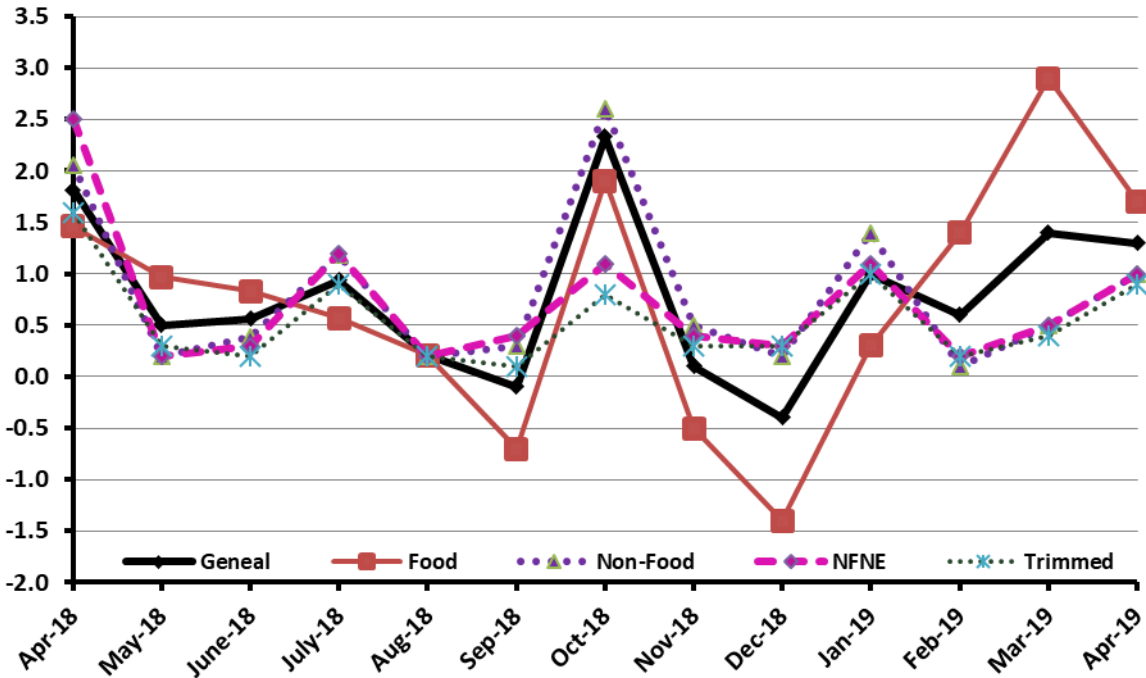


Figure 2: CPI Inflation MoM, Special Indices



I. Consumer Price Index (CPI)

The Consumer Price Index of April 2019 is increased by 1.26% over March 2019 and increased by 8.82% over corresponding month of the last year i.e. April 2018.

Table 2: Consumer Price Index by Group of Commodities and Services (Base 2007-08)

No	Group	Group Weight (%)	Indices			% Change April 2019 Over		Impact (In % points) April 2019 Over	
			April 2019	March 2019	April 2018	March 2019	April 2018	March 2019	April 2018
	General	100.00	244.03	240.99	224.25	1.26	8.82	1.26	8.82
1.	Food & Non-alcoholic Beverages	34.83	251.63	247.17	231.90	1.80	8.51	0.64	3.07
	<i>Non-perishable Food Items</i>	29.84	247.05	245.13	232.93	0.78	6.06	0.24	1.88
	<i>Perishable Food Items</i>	4.99	278.99	259.40	225.72	7.55	23.60	0.41	1.19
2.	Alcoholic Bev. & Tobacco	1.41	356.07	355.49	317.70	0.16	12.08	0.00	0.24
3.	Clothing & Footwear	7.57	265.35	263.53	252.06	0.69	5.27	0.06	0.45
4.	Housing, Water, Electricity, Gas & Fuels	29.41	228.21	226.12	207.35	0.92	10.06	0.26	2.74
5.	Furnishing & Household Equipment Maintenance	4.21	259.18	256.99	239.28	0.85	8.32	0.04	0.37
6.	Health	2.19	241.77	239.13	223.07	1.10	8.38	0.02	0.18
7.	Transport	7.20	214.66	211.31	187.48	1.59	14.50	0.10	0.87
8.	Communication	3.22	143.65	143.65	133.67	0.00	7.47	0.00	0.14
9.	Recreation & Culture	2.02	222.38	219.76	207.95	1.19	6.94	0.02	0.13
10.	Education	3.94	297.26	292.01	281.57	1.80	5.57	0.09	0.28
11.	Restaurants & Hotels	1.23	308.62	306.47	291.05	0.70	6.04	0.01	0.10
12.	Miscellaneous	2.76	284.45	282.45	263.58	0.71	7.92	0.02	0.26

Main contributors to month-on-month and year-on-year percentage changes are given below and detail is given in Annexure A.

1. Month-on-month Top few commodities which varied from previous month i.e. March 2019 are given below: -

Food Increased: Fresh Fruits (24.21%), Fresh Vegetables (10.93%), Chicken (9.90%), Sugar (6.76%), Potatoes (6.08%), Onions (4.87%), Gur (2.97%), Pulse Moong (2.67%), Cooking Oil (1.83%), Vegetable Ghee (1.32%) and Meet (1.15%).

Decreased: Tomatoes (41.42%), Eggs (19.88%), Wheat (1.97%), Gram Whole (1.20%), Pulse Gram (0.90%), Wheat Product (0.80%), Wheat Flour (0.77%), Beans (0.54%), Dry Fruit (0.53%), Besan (0.45%), Pulse Mash (Washed) (0.37%).

Non-food Increased: Motor Fuel (4.22%), Kerosene Oil (2.38%), Education (1.80%), Cotton Cloth (1.71%), Personal Equipment (1.55%), Text Books (1.55%), House Rent (1.30%) and Household Servant (0.82%).

Decreased: Transport Services (0.27%).

Year-on-Year: Top few commodities which varied from previous year i.e. April, 2018 are given below:-

Food Increased: Tomatoes (124.30%), Onions (35.99%), Pulse Moong (26.20%), Fresh Vegetables (23.34%), Sugar (22.17%), Gur (19.71%), Spices (17.36%), Fresh Fruits (15.81%), Meat (12.63%), Pulse Gram (8.89%), Vegetable Ghee (7.97%), Cooking Oil (7.61%), Tea (6.76%), Wheat (4.76%) and Milk Fresh (4.01%).

Decreased: Eggs (8.61%), Gram Whole (5.04%) and Potatoes (3.5%).

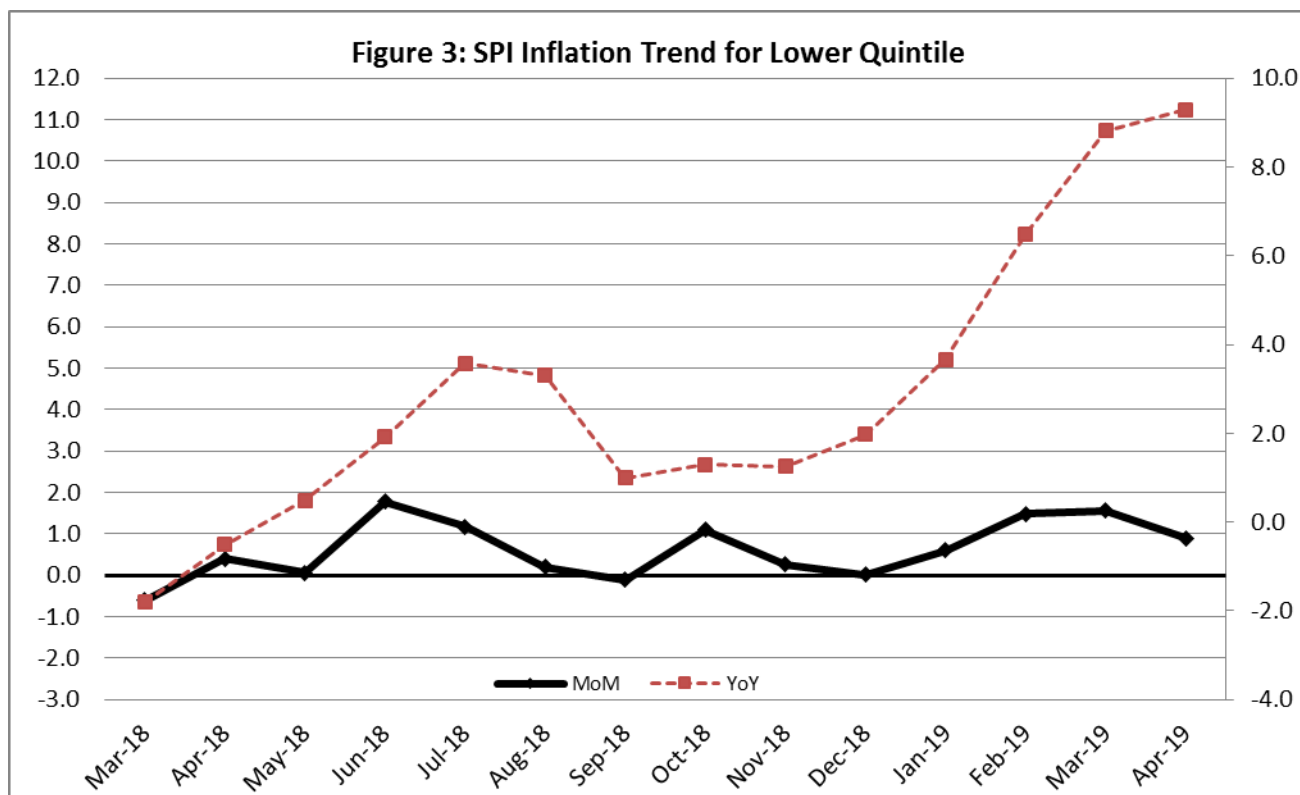
Non-food Increased: Gas (85.31%), Motor Fuel (19.51%), Transport Services (13.32%), Motor Vehicles (10.75%), Construction Input Items (10.30%), Kerosene Oil (9.38%), Electricity (8.48%), Construction Wage Rates (7.34%) and House Rent (6.35%).

II. Sensitive Price Indicator

Quintile-wise percentage changes YoY and MoM are given below in Table 3. The series from April 2018 to April 2019 is also graphed below in Figure 3.

Table 3: Sensitive Price Indicator (Base 2007-08)					
Quintiles	Indices			% Change April, 2019 over	
	April, 2019	March, 2019	April, 2018	March, 2019	April, 2018
1	229.84	227.82	210.31	0.89	9.29
2	239.56	237.38	219.00	0.92	9.39
3	241.55	239.29	220.99	0.94	9.30
4	256.24	253.77	226.29	0.97	13.24
5	263.16	260.33	225.59	1.09	16.65
Combined	250.70	248.19	223.13	1.01	12.36

Table 3.1 : Weekly Percentage Change of SPI During April, 2019				
Quintiles	% Change with Previous week			
	25.04.2019	18.04.2019	11.03.2019	04.03.2019
Quintile 1	0.40	0.37	0.35	0.64
Combined	0.37	0.39	0.30	0.81



IV. Wholesale Price Index

The Wholesale Price Index for April, 2019 increased by 2.33% over March, 2019. It increased by 13.81% over the corresponding month of the last year. YoY and MoM movements, from April, 2018 to April, 2019 are also graphed below in Figure 4.

Table 4: Wholesale Price Index by Group of Commodities (Base 2007-08)

No.	Group	Group Weight (%)	Indices			% Change Apr, 2019 over		Impact (in %age points) Apr, 2019 over	
			Apr. 2019	Mar. 2019	Apr, 2018	Mar. 2019	Apr, 2018	Mar. 2019	Apr, 2018
	General	100.00	259.57	253.67	228.07	2.33	13.81	2.33	13.81
1.	Agriculture, Forestry & Fishery Products	25.77	287.68	278.88	260.48	3.16	10.44	0.89	3.07
2.	Ores & Minerals, Electricity, Gas & Water	12.04	290.77	291.02	242.84	-0.09	19.74	-0.01	2.53
3.	Food Products, Beverages & Tobacco, Textiles, Apparel & Leather Products	31.11	265.89	258.24	233.13	2.96	14.05	0.94	4.47
	i. Food Products, Bev. & Tobacco	20.07	266.38	261.53	240.00	1.85	10.99	0.38	2.32
	ii. Textiles and Apparel	10.33	257.70	246.33	222.05	4.62	16.05	0.46	1.61
	iii. Leather Products	0.71	370.84	338.12	199.90	9.68	85.51	0.09	0.53
4.	Other Transportable Goods except Metal Products, Machinery & Equipment	22.37	227.00	222.43	193.68	2.05	17.20	0.40	3.27
5.	Metal Products, Machinery & Equipment	8.72	194.35	191.40	182.01	1.54	6.78	0.10	0.47

Main contributors to month-on-month and year-on-year percentage changes are given below and detail is given in Annexure B.

1. **Month-on-month** Top few commodities which varied from previous month i.e. March, 2019 are given below:-

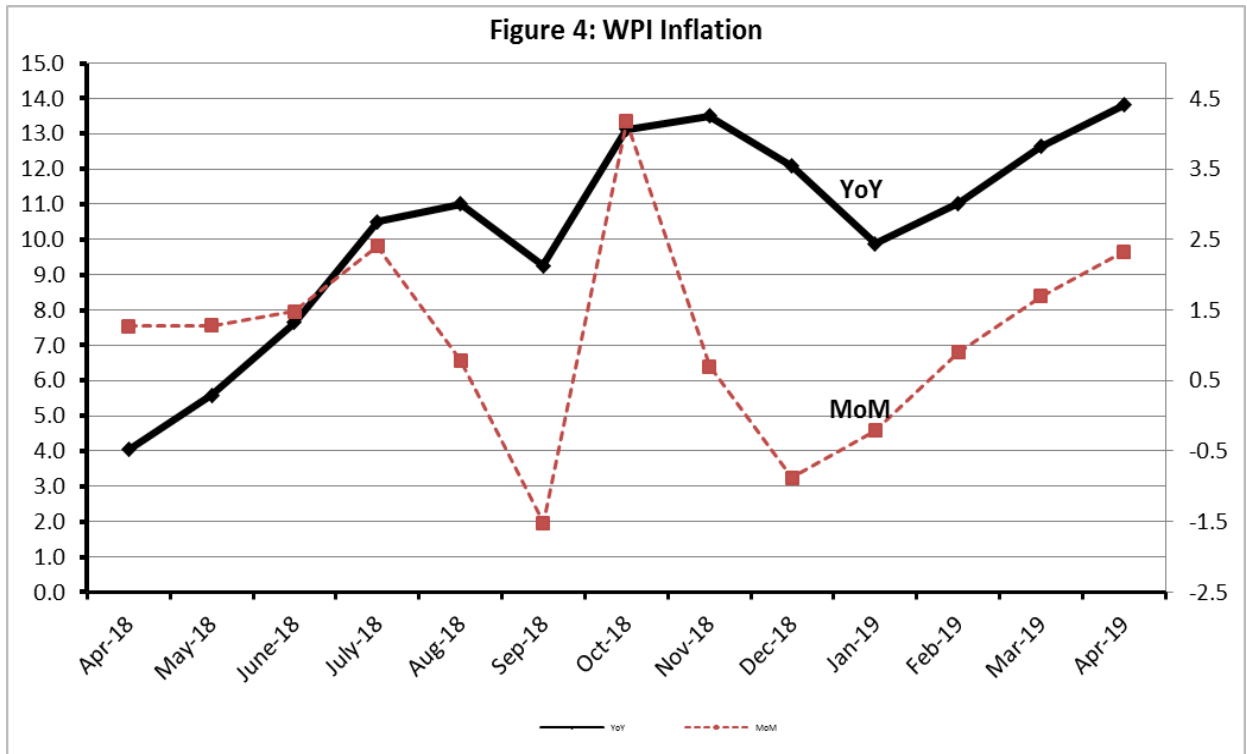
Increased: Vegetables (30.76%), Fresh Fruits (18.52%), Other Leather N.E.C (15.96%), Poultry (11.86%), Potatoes (9.53%), Jowar (8.01%). Radio & Television (7.44%), Cotton Yarn (7.37%), Sugar (6.70%), Petrol (6.47%), Salt & Pure Sodium Chloride (5.73%), Pipe Fittings (5.42%), Spices (4.70%), Medicines (4.67%), Diesel (4.65%), Stimulant & Spice Crops (4.58%), Steel Bars & Sheets (4.12%), Processed Liquid Milk (3.74%), Mobil Oil (3.72%), Fridge, Washing Machines etc. (3.58%), Kerosene Oil (3.48%), Air Conditioners (3.17%), Ready Made Garments (2.97%), Hosiery Products (2.71%), Bajra (2.62%), Cotton Seeds (2.59%), Vegetable Oil (2.58%), Motor Vehicles & Maize (2.56% each), Synthetic Carpets (2.24%), Vegetable Ghee (2.12%), Dairy Products N.E.C. (1.93%) and Mineral Water (1.88%).

Decreased: Eggs (23.92%) and Wheat (1.95%).

2. **Year-on-year** Top few commodities which varied from previous year i.e. April, 2018 are given below:-

Increased: Other Leather N.E.C (218.26%), Jowar (71.37%), Vegetables (50.24%), Natural Gas Liquefied (49.44%), Furnace Oil (40.87%), Sugar Crops (35.74%), Bajra (31.72%), Sugar (26.90%), Spices (24.59%), Lathe Machine (24.12%), Cotton Yarn (23.83%), Tobacco Products (23.69%), Paints & Varnishes (22.63%), Diesel (22.49%), Stimulant & Spice Crops (22.05%), Motorcycle (20.42%), Fertilizers (18.96%), Maize (17.06%), Kerosene Oil (17.02%), Rice (16.98%), Pipe Fittings (16.59%), Chemicals (15.63%), Auto Tyres (15.39%), Fresh Fruits (15.20%), Fibre Crops (15.07%), Petrol (15.00%) and Dried Fruits & Nuts (14.65%).

Decreased: Eggs (13.16%), Hides & Fur Skins (5.88%), Potatoes (4.59%), Fish (2.43%) and Electrical Energy (1.42%).



Annexure – A: CPI by Commodity Groups and Commodities (2007-08=100)

Item and Specification	Weight	Index Numbers			% Change in April 2019 over			
		April 2019	Mar 2019	April 2018	March 2019	April 2018		
<i>General</i>	100.00	244.03	240.99	224.25	+	1.26	+	8.82
<i>Food and non-alcoholic Beverages</i>	34.834	251.63	247.17	231.90	+	1.80	+	8.51
1 Wheat	0.3477	208.40	212.59	198.93	-	1.97	+	4.76
2 Wheat Flour	4.1648	215.66	217.34	210.07	-	0.77	+	2.66
3 Wheat Product	0.0959	215.88	217.61	213.09	-	0.80	+	1.31
4 Besan	0.1500	273.96	275.20	263.89	-	0.45	+	3.82
5 Rice	1.5821	203.89	202.28	193.68	+	0.80	+	5.27
6 Cereals	0.1563	271.41	270.70	261.81	+	0.26	+	3.67
7 Bakery & Confectionary	1.1550	234.69	234.33	225.07	+	0.15	+	4.27
8 Nimco	0.4574	264.08	264.08	258.88	+	0.00	+	2.01
9 Meat	2.4303	336.48	332.66	298.76	+	1.15	+	12.63
10 Chicken	1.3596	225.63	205.30	216.82	+	9.90	+	4.06
11 Fish	0.2970	246.88	242.29	227.59	+	1.89	+	8.48
12 Milk Fresh	6.6800	293.07	291.26	281.77	+	0.62	+	4.01
13 Milk Products	0.6338	286.28	284.62	274.91	+	0.58	+	4.14
14 Milk Powder	0.1129	259.07	258.38	241.94	+	0.27	+	7.08
15 Eggs	0.4555	171.82	214.46	188.00	-	19.8	-	8.61
16 Mustard Oil	0.0952	169.31	167.29	164.66	+	1.21	+	2.82
17 Cooking Oil	1.7538	151.17	148.45	140.48	+	1.83	+	7.61
18 Vegetable Ghee	2.0714	156.14	154.11	144.61	+	1.32	+	7.97
19 Dry Fruits	0.2543	311.07	312.73	284.15	-	0.53	+	9.47
20 Fresh Fruits	1.8649	326.18	262.61	281.64	+	24.2	+	15.81
21 Pulse Masoor	0.2712	166.91	166.04	158.21	+	0.52	+	5.50
22 Pulse Moong	0.2336	275.65	268.48	218.42	+	2.67	+	26.20
23 Pulse Mash (Washed)	0.2098	219.98	220.80	214.66	-	0.37	+	2.48
24 Pulse Gram	0.2361	282.30	284.87	259.25	-	0.90	+	8.89
25 Gram Whole	0.1616	263.21	266.42	277.17	-	1.20	-	5.04
26 Beans	0.0269	268.50	269.96	244.53	-	0.54	+	9.80
27 Potatoes	0.4452	143.36	135.14	148.56	+	6.08	-	3.50
28 Onion	0.5093	248.09	236.56	182.43	+	4.87	+	35.99
29 Tomatoes	0.4172	237.08	404.71	105.70	-	41.4	+	124.30
30 Fresh Vegetables	1.7543	288.05	259.66	233.55	+	10.9	+	23.34
31 Sugar	1.0445	232.83	218.09	190.58	+	6.76	+	22.17
32 Gur	0.0220	287.70	279.41	240.34	+	2.97	+	19.71
33 Honey	0.0446	399.03	392.98	341.92	+	1.54	+	16.70
34 Sweet Meat	0.2483	279.53	278.37	267.41	+	0.42	+	4.53
35 Beverages	1.1990	235.98	234.23	230.60	+	0.75	+	2.33
36 Jam, Tomato Ketchup & Pickles	0.2454	241.85	239.87	228.80	+	0.83	+	5.70
37 Condiments	0.2656	299.50	299.19	283.14	+	0.10	+	5.78
38 Spices	0.5441	286.08	282.09	243.77	+	1.41	+	17.36
39 Tea	0.8377	320.98	319.96	300.65	+	0.32	+	6.76
<i>Alcoholic Beverages, Tobacco</i>	1.4135	356.08	355.50	317.70	+	0.16	+	12.08
40 Cigarettes	1.3906	352.20	351.79	307.42	+	0.12	+	14.57
41 Betel Leaves & Nuts	0.0229	591.41	580.96	941.86	+	1.80	-	37.21
<i>Clothing and footwear</i>	7.5708	265.36	263.54	252.06	+	0.69	+	5.28
42 Cotton Cloth	1.7286	263.74	259.30	243.75	+	1.71	+	8.20
43 Woolen Cloth	0.8759	280.61	278.73	268.30	+	0.67	+	4.59
44 Readymade Garments	0.9739	272.89	270.90	262.52	+	0.73	+	3.95
45 Woolen Readymade Garments	0.3964	289.31	289.31	266.50	+	0.00	+	8.56
46 Hosiery	0.5094	279.59	277.45	264.90	+	0.77	+	5.55

Annexure A: CPI by Commodity Groups and Commodities (2007-08=100)

Item and Specification	Weight	Index Numbers			% Change in Apr 2019 over		
		Apr 2019	Mar 2019	Apr 2018	Mar 2019	Apr 2018	
47 Dopatta	0.4412	275.65	273.38	261.67	+	0.83	+ 5.34
48 Cleaning and Laundry	0.2110	305.07	303.52	290.46	+	0.51	+ 5.03
49 Tailoring	0.8840	359.16	359.07	343.91	+	0.03	+ 4.43
50 Footwear	1.5504	181.19	181.18	177.36	+	0.01	+ 2.16
<u>Housing, water, Elec., Gas and other</u>	29.4149	228.21	226.12	207.35	+	0.92	+ 10.06
51 House Rent	21.8149	214.78	212.02	201.96	+	1.30	+ 6.35
52 Construction Input Items	0.5623	296.83	295.39	269.11	+	0.49	+ 10.30
53 Construction Wage Rates	0.3331	282.22	281.40	262.93	+	0.29	+ 7.34
54 Water Supply	0.4971	195.29	195.29	177.11	+	0.00	+ 10.26
55 Electricity	4.3985	258.28	258.28	238.10	+	0.00	+ 8.48
56 Gas	1.5756	292.94	292.94	158.08	+	0.00	+ <u>85.31</u>
57 Kerosene Oil	0.0057	284.86	278.25	260.44	+	2.38	+ 9.38
58 Firewood Whole	0.2277	307.99	307.17	301.32	+	0.27	+ 2.21
<u>Furnishing and household</u>	4.2082	259.19	257.00	239.29	+	0.85	+ 8.32
59 Furniture	0.3315	255.11	252.79	235.27	+	0.92	+ 8.43
60 Household Textiles	0.6489	253.98	253.05	242.24	+	0.37	+ 4.85
61 Household Equipment	0.5936	202.00	198.67	188.50	+	1.68	+ 7.16
62 Utensils	0.3212	275.24	273.60	248.73	+	0.60	+ 10.66
63 Plastic Products	0.2547	248.20	245.73	224.20	+	1.01	+ 10.70
64 Washing Soaps & Detergents	0.7893	263.63	261.30	238.88	+	0.89	+ 10.36
65 Sewing Needle & Dr Cell	0.1496	232.24	231.04	217.51	+	0.52	+ 6.77
66 Household Servant	1.0432	292.98	290.60	270.32	+	0.82	+ 8.38
67 Marriage Hall Charges	0.0762	279.97	277.33	260.28	+	0.95	+ 7.56
<u>Health</u>	2.1868	241.75	239.12	223.08	+	1.10	+ 8.37
68 Drugs & Medicines	1.2667	206.92	204.15	188.62	+	1.36	+ 9.70
69 Medical Equipments	0.0080	281.94	277.26	259.89	+	1.69	+ 8.48
70 Doctor (MBBS) Clinic Fee	0.5904	324.35	321.75	301.80	+	0.81	+ 7.47
71 Medical Tests	0.3217	226.33	224.24	213.34	+	0.93	+ 6.09
<u>Transport</u>	7.2023	214.66	211.31	187.48	+	1.59	+ 14.50
72 Motor Vehicles	0.6630	207.61	206.44	187.45	+	0.57	+ 10.75
73 Motor Vehicle Accessories	0.2439	239.38	238.24	216.78	+	0.48	+ 10.43
74 Motor Fuel	3.0269	197.39	189.40	165.17	+	4.22	+ 19.51
75 Mechanical Service	0.4552	256.98	256.98	241.91	+	0.00	+ 6.23
76 Motor Vehicle Tax	0.1099	215.18	210.18	210.18	+	2.38	+ 2.38
77 Transport Services	2.7034	226.34	226.96	199.74	-	0.27	+ 13.32
<u>Communication</u>	3.2198	143.65	143.65	133.67	+	0.00	+ 7.47
78 Postal Services	0.0662	272.63	272.63	272.18	+	0.00	+ 0.17
79 Communication & Apparatus	3.1536	140.94	140.94	130.77	+	0.00	+ 7.78
<u>Recreation and culture</u>	2.0227	222.37	219.77	207.96	+	1.18	+ 6.93
80 Recreation & Culture	0.8634	138.16	137.69	134.05	+	0.34	+ 3.07
81 Text Books	0.5706	321.86	316.96	303.91	+	1.55	+ 5.91
82 Newspapers	0.1934	242.78	235.21	202.94	+	3.22	+ 19.63
83 Stationery	0.3953	252.72	251.19	233.34	+	0.61	+ 8.31
<u>Education</u>	3.9431	297.27	292.02	281.57	+	1.80	+ 5.58
84 Education	3.9431	297.27	292.02	281.57	+	1.80	+ 5.58
<u>Restaurants and hotels</u>	1.2286	308.62	306.48	291.05	+	0.70	+ 6.04
85 Readymade Food	1.2286	308.62	306.48	291.05	+	0.70	+ 6.04
<u>Misc. goods and services</u>	2.7550	284.46	282.45	263.59	+	0.71	+ 7.92
86 Personal Care	1.4935	251.10	250.69	237.36	+	0.16	+ 5.79
87 Cosmetics	0.3853	237.40	236.95	222.28	+	0.19	+ 6.80
88 Blades	0.0322	221.15	221.15	203.39	+	0.00	+ 8.73
89 Personal Equipments	0.8440	367.39	361.77	331.15	+	1.55	+ 10.94

Annexure B: Wholesale Price Indices by Major Groups & Commodities

(2007-08=100)

Item and Specification	Weight	Index Numbers			% Change in Apr 2019 over	
		Apr 19	Mar 19	Apr 18	Mar 2019	Apr 2018
General	100.0000	259.57	253.67	228.07	+ 2.33	+ 13.81
Agriculture Forestry & Fisher	25.7674	287.68	278.88	260.48	+ 3.16	+ 10.44
001 Wheat	0.6297	211.18	215.39	203.30	- 1.95	+ 3.88
002 Maize	0.6764	246.66	240.50	210.71	+ 2.56	+ 17.06
003 Rice	2.4413	203.63	200.73	174.07	+ 1.44	+ 16.98
004 Sorghum / Jowar	0.0214	447.93	414.71	261.38	+ 8.01	+ <u>71.37</u>
005 Millet / Bajra	0.0374	260.31	253.66	197.62	+ 2.62	+ 31.72
006 Vegetables	1.2441	356.37	272.54	237.20	+ 30.76	+ <u>50.24</u>
007 Fresh Fruits	1.5144	355.25	299.74	308.39	+ 18.52	+ 15.20
008 Dry Fruits	0.2478	282.36	283.90	275.26	- 0.54	+ 2.58
009 Cotton Seeds	1.1511	272.29	265.42	255.66	+ 2.59	+ 6.50
010 Other Oil Seeds	0.0722	187.39	187.30	182.04	+ 0.05	+ 2.94
011 Edible Roots / Potatoes	0.2540	126.99	115.94	133.10	+ 9.53	- 4.59
012 Stimulant & Spice Crops	0.1634	340.75	325.84	279.19	+ 4.58	+ 22.05
013 Pulses	0.4901	249.67	249.11	239.71	+ 0.22	+ 4.16
014 Sugar Crops	1.0725	349.69	349.69	257.62	+ 0.00	+ 35.74
015 Fibre Crops	5.3169	278.87	278.10	242.34	+ 0.28	+ 15.07
016 Unmanufactured Tobacco	0.0742	325.04	324.89	308.03	+ 0.05	+ 5.52
017 Poultry	0.5633	246.03	219.94	230.37	+ 11.86	+ 6.80
018 Raw Milk from Bovine Animals	7.0279	290.78	288.02	280.72	+ 0.96	+ 3.58
019 Eggs	0.5034	163.90	215.43	188.73	- 23.92	- 13.16
020 Raw Animal Materials / Wool	0.0351	190.05	190.56	176.13	- 0.27	+ 7.90
021 Hides & Fur Skins, Raw	0.4834	92.86	92.98	98.66	- 0.13	+ 5.88
022 Fuel Wood in Logs	0.0179	293.83	295.14	283.56	- 0.44	+ 3.62
023 Fish Live Fresh or Chilled	1.7295	465.14	463.18	476.70	+ 0.42	- 2.43
Ores/Minerals, Elec., Gas & W	12.0389	290.77	291.02	242.84	- 0.09	+ 19.74
024 Coal not Agglomerated	0.7508	155.29	155.29	155.29	+ 0.00	+ 0.00
025 Natural Gas Liquefied	5.7385	315.07	315.75	210.84	- 0.22	+ 49.44
026 Salt & Pure Sodium Chloride	0.0584	290.99	275.23	266.38	+ 5.73	+ 9.24
027 Electrical Energy	5.4912	283.90	283.90	288.00	+ 0.00	- 1.42
Food, Beverages, Tobacco, Textil	31.1122	265.89	258.24	233.13	+ 2.96	+ 14.05
Food Products, Beverages &	20.0718	266.38	261.53	240.00	+ 1.85	+ 10.99
028 Meat of Animals	3.4559	353.98	353.19	317.46	+ 0.22	+ 11.50
029 Vegetables & Fruit Juice	0.0058	231.57	228.62	226.66	+ 1.29	+ 2.17
030 Dried Fruits & Nuts	0.1733	333.48	331.44	290.88	+ 0.62	+ 14.65
031 Fruit Juices	0.3880	192.06	189.38	184.96	+ 1.42	+ 3.84
032 Vegetable Oils Refined	1.9242	168.32	164.09	157.40	+ 2.58	+ 6.94
033 Vegetable Ghee	1.5632	139.82	136.92	128.77	+ 2.12	+ 8.58
034 Oil Cakes	0.9611	250.04	247.94	227.97	+ 0.85	+ 9.68
035 Processed Liquid Milk	4.4437	311.00	299.78	288.23	+ 3.74	+ 7.90
036 Milk & Cream in Solid Form	0.0316	242.85	240.19	223.34	+ 1.11	+ 8.74
037 Ice Cream	0.0047	287.85	287.85	266.02	+ 0.00	+ 8.21
038 Dairy Products N.E.C	0.0117	298.79	293.13	273.79	+ 1.93	+ 9.13
039 Wheat Flour	2.3034	196.69	198.19	190.87	- 0.76	+ 3.05
040 Other Cereal Flour	0.0604	230.69	229.53	213.24	+ 0.51	+ 8.18
041 Sugar Refined	1.7975	248.79	233.17	196.05	+ 6.70	+ 26.90
042 Chocolate	0.0139	100.00	100.00	100.00	+ 0.00	+ 0.00
043 Sugar Confectionary	0.0738	128.15	128.15	127.55	+ 0.00	+ 0.47
044 Coffee & Tea	0.7303	289.70	288.37	272.46	+ 0.46	+ 6.33
045 Spices	0.1449	251.98	240.67	202.24	+ 4.70	+ 24.59
046 Other Food Products	0.0336	319.77	316.48	294.50	+ 1.04	+ 8.58
047 Mineral Water	0.0207	216.02	212.04	211.50	+ 1.88	+ 2.14
048 Beverages	0.6303	178.18	176.55	173.00	+ 0.92	+ 2.99
049 Tobacco Products	1.2998	393.80	393.80	318.37	+ 0.00	+ 23.69
Textiles & Apparels	10.3289	257.70	246.33	222.05	+ 4.62	+ 16.05
050 Cotton Yarn	5.2491	283.63	264.15	229.04	+ 7.37	+ 23.83
051 Nylon Yarn	0.1719	143.99	143.99	143.99	+ 0.00	+ 0.00
052 Blended Yarn	0.1689	207.37	204.96	192.56	+ 1.18	+ 7.69
053 Woven Fabrics	0.0128	344.94	344.94	321.49	+ 0.00	+ 7.29
054 Cotton Fabrics	0.6343	226.25	225.33	214.23	+ 0.41	+ 5.61
055 Other Fabrics	1.1016	235.88	235.32	227.16	+ 0.24	+ 3.84
056 Silk & Reyon Fabrics	0.7350	194.81	194.81	188.14	+ 0.00	+ 3.55
057 Towels	0.1235	308.50	308.50	276.14	+ 0.00	+ 11.72

Annexure B: Wholesale Price Indices by Major Groups & Commodities

(2007-08=100)

Item and Specification	Weight	Index Numbers			% Change in Apr 2019 over	
		Apr 19	Mar 19	Apr 18	Mar 2019	Apr 2018
058 Blankets	0.0029	277.52	277.52	265.03	+ 0.00	+ 4.71
059 Bed Sheets	0.0913	269.00	269.00	256.87	+ 0.00	+ 4.72
060 Quilts	0.0019	232.74	229.26	222.32	+ 1.52	+ 4.69
061 Woolen Carpets	0.0383	199.40	196.43	196.43	+ 1.51	+ 1.51
062 Synthetic Carpets	0.0566	134.75	131.80	130.95	+ 2.24	+ 2.90
063 Hosiery Products	0.8832	273.87	266.64	248.01	+ 2.71	+ 10.43
064 Readymade Garments	1.0576	228.07	221.50	201.16	+ 2.97	+ 13.38
Leather Products	0.7115	370.84	338.12	199.90	+ 9.68	+ 85.51
065 Leather Without Hair	0.2973	229.55	229.55	212.68	+ 0.00	+ 7.93
066 Other Leather N.E.C	0.2567	658.87	568.19	207.02	+ 15.96	+ <u>218.2</u>
						<u>6</u>
067 Footwears	0.1575	168.09	168.09	164.15	+ 0.00	+ 2.40
Other Transportable Goods	22.3659	227.00	222.43	193.68	+ 2.05	+ 17.20
068 Timber	0.0165	244.62	244.62	237.00	+ 0.00	+ 3.22
069 Printing Paper	0.4279	174.76	174.76	170.48	+ 0.00	+ 2.51
070 Hard Board	0.1579	291.67	291.67	260.42	+ 0.00	+ 12.00
071 Coke	0.2797	163.45	163.45	163.45	+ 0.00	+ 0.00
072 Motor Spirit	1.5336	167.06	156.91	145.27	+ 6.47	+ 15.00
073 Diesel Oil	5.2664	249.21	238.13	203.45	+ 4.65	+ 22.49
074 Kerosine Oil	0.2151	238.48	230.47	203.79	+ 3.48	+ 17.02
075 Furnace Oil	3.2664	185.83	183.68	131.92	+ 1.17	+ 40.87
076 Mobil Oil	0.7114	221.27	213.34	201.08	+ 3.72	+ 10.04
077 Chemicals	1.7720	221.50	222.25	191.56	- 0.34	+ 15.63
078 Dyeing Material	0.1539	155.94	155.94	146.55	+ 0.00	+ 6.41
079 Fertilizers	2.8657	268.91	266.94	226.05	+ 0.74	+ 18.96
080 Pesticides	0.2763	316.64	316.64	310.16	+ 0.00	+ 2.09
081 Insecticides	0.1276	150.13	148.01	141.00	+ 1.43	+ 6.48
082 Paints & Varnishes	0.1916	369.27	364.40	301.12	+ 1.34	+ 22.63
083 Medicines	1.1428	194.23	185.56	177.04	+ 4.67	+ 9.71
084 Soaps & Detergents	0.8168	202.19	201.14	190.72	+ 0.52	+ 6.01
085 Auto Tyres	0.2703	204.36	204.20	177.11	+ 0.08	+ 15.39
086 Plastic Products	0.4550	246.72	246.23	239.27	+ 0.20	+ 3.11
087 Glass sheets	0.2089	337.30	337.30	302.27	+ 0.00	+ 11.59
088 Other Glass Articles	0.1635	331.31	331.31	318.10	+ 0.00	+ 4.15
089 Ceramics & Sanitary Fixture	0.0244	252.16	249.92	236.41	+ 0.90	+ 6.66
090 Bricks, Blocks & Tiles	0.1566	226.38	227.28	223.30	- 0.40	+ 1.38
091 Cement	1.8145	235.80	237.32	223.43	- 0.64	+ 5.54
092 Bed Foam	0.0006	181.83	181.83	175.33	+ 0.00	+ 3.71
093 Matches	0.0505	172.57	172.57	171.36	+ 0.00	+ 0.71
Metal Product, Machinery & Eq	8.7156	194.35	191.40	182.01	+ 1.54	+ 6.78
094 Pig Iron	0.0593	128.97	128.97	128.97	+ 0.00	+ 0.00
095 Steel Bar & Sheets	1.4022	178.62	171.55	158.63	+ 4.12	+ 12.60
096 Pipe Fittings	0.0780	251.44	238.51	215.66	+ 5.42	+ 16.59
097 Steel Products	0.3879	189.42	189.19	176.76	+ 0.12	+ 7.16
098 Engines & Motors	0.0046	116.98	116.98	116.98	+ 0.00	+ 0.00
099 Vacuum Pumps	0.0155	123.69	123.69	123.69	+ 0.00	+ 0.00
100 Air Conditioners	0.0049	218.02	211.33	200.10	+ 3.17	+ 8.96
101 Cultivators	0.0551	190.66	190.66	190.66	+ 0.00	+ 0.00
102 Chuff Cutter	0.1293	153.46	153.46	153.46	+ 0.00	+ 0.00
103 Tractors	0.0028	226.93	226.93	201.75	+ 0.00	+ 12.48
104 Lathe Machines	0.0525	299.21	299.21	241.06	+ 0.00	+ 24.12
105 Concrete Mixture	0.0107	138.83	138.83	138.83	+ 0.00	+ 0.00
106 Fridge, WashM, SewM, Fans, Iron	1.1645	251.74	243.04	222.10	+ 3.58	+ 13.35
107 Electric Wires	0.0912	212.00	208.22	208.22	+ 1.82	+ 1.82
108 Lighting Equipments	1.4431	175.37	174.13	174.04	+ 0.71	+ 0.76
109 Radio & Television	0.1843	150.87	140.42	140.42	+ 7.44	+ 7.44
110 Motor Vehicles	0.0244	235.59	229.70	211.00	+ 2.56	+ 11.65
111 Motorcycles	0.2570	160.54	159.20	133.32	+ 0.84	+ 20.42
112 Bicycles	3.3483	194.31	194.31	187.65	+ 0.00	+ 3.55

Annexure – C

CPI by Income Quintiles and Commodity Groups (2007-08=100 April, 2019 (% change with March, 2019) MoM

Income Quintiles	General	Food and non-alcoholic Beverages	Alcoholic Beverages, Tobacco	Clothing and footwear	Housing, water, Elec., Gas and other fuels	Furnishing and household equipment maintenance	Health	Transport	Communication	Recreation and culture	Education	Restaurants and hotels	Misc. goods and services
Combine	1.26	1.80	0.16	0.69	0.92	0.85	1.10	1.59	0.00	1.18	1.80	0.70	0.71
Income Quintile 1	1.10	1.42	0.18	0.72	0.81	0.89	1.04	0.38	0.00	1.18	2.08	0.71	0.26
Income Quintile 2	1.15	1.56	0.17	0.72	0.79	0.86	1.07	0.87	0.00	1.17	2.07	0.73	0.26
Income Quintile 3	1.19	1.65	0.17	0.71	0.81	0.85	1.10	1.24	0.00	1.15	1.98	0.71	0.38
Income Quintile 4	1.22	1.78	0.17	0.70	0.75	0.85	1.12	1.64	0.00	1.12	1.93	0.69	0.46
Income Quintile 5	1.26	2.02	0.15	0.67	0.80	0.85	1.11	1.70	0.00	1.23	1.72	0.70	1.01

CPI by Income Quintiles and Commodity Groups (2007-08=100) April, 2019 (% change with April, 2018) YoY

Income Quintiles	General	Food and non-alcoholic Beverages	Alcoholic Beverages, Tobacco	Clothing and footwear	Housing, water, Elec., Gas and other fuels	Furnishing and household equipment maintenance	Health	Transport	Communication	Recreation and culture	Education	Restaurants and hotels	Misc. goods and services
Combine	8.82	8.51	12.08	5.28	10.06	8.32	8.37	14.50	7.47	6.93	5.58	6.04	7.92
Income Quintile 1	7.58	8.52	13.73	5.50	5.32	8.85	8.35	18.13	3.22	6.18	4.68	5.90	6.18
Income Quintile 2	7.54	8.48	13.63	5.42	5.71	8.70	8.38	16.33	3.87	6.15	4.61	5.95	6.17
Income Quintile 3	7.53	8.51	13.37	5.34	5.59	8.50	8.41	15.43	4.72	6.17	4.64	5.96	6.59
Income Quintile 4	9.07	8.53	12.73	5.26	11.59	8.40	8.38	14.58	6.19	6.36	4.64	6.00	6.90
Income Quintile 5	9.91	8.50	10.63	5.19	13.12	8.20	8.36	14.13	8.82	7.60	6.04	6.09	9.15