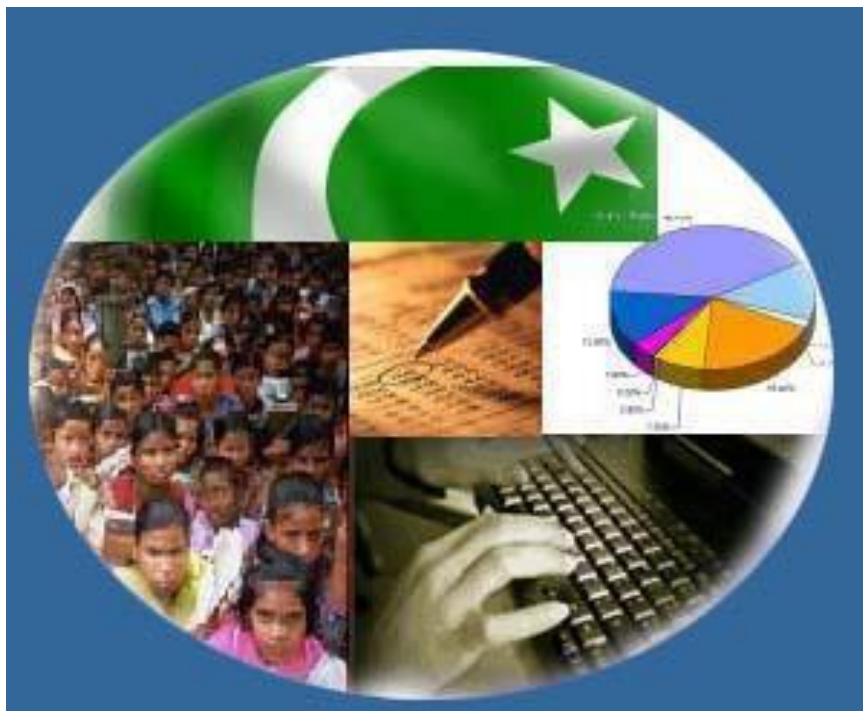




Monthly Review on Price Indices



December, 2017
(Base 2007-08)

Government of Pakistan
Ministry Of Statistics
Pakistan Bureau of Statistics
Islamabad

Inflation in Brief

1. CPI inflation General increased by 4.6% on year-on-year basis in December 2017 as compared to an increase of 4.0% in the previous month and 3.7% in December 2016. On month-on-month basis, it decreased by 0.1% in December 2017 as compared to an increase of 0.4% in the previous month and decrease of 0.7% in December 2016.
2. Core inflation measured by non-food non-energy CPI (Core NFNE) increased by 5.5% on (YoY) basis in December 2017 as compared to an increase of 5.5% in the previous month and 5.2% in December 2016. On (MoM) basis, it increased by 0.2% in December 2017 as compared to increase of 0.3% in previous month, and an increase of 0.1% in corresponding month of last year i.e. December 2016.
3. Core inflation, measured by 20% weighted trimmed mean CPI (Core Trimmed) increased by 4.7% on (YoY) basis in December 2017 as compared to 4.2% in the previous month and by 3.7% in December 2016. On (MoM) basis, it increased by 0.2% in December 2017 as compared to an increase of 0.3% in the previous month and an increase of 0.1% in corresponding month of last year i.e. December 2016.
4. SPI inflation on YoY increased by 2.2% in December 2017 as compared to an increase of 2.1% a month earlier and an increase of 0.5% in December 2016. On MoM basis, it decreased by 0.7% in December 2017 as compared to an increase of 0.3% a month earlier and a decrease of 0.8% in December 2016.
5. WPI inflation on YoY basis increased by 3.4% in December 2017 as compared to an increase of 2.9% a month earlier and an increase of 3.1% in December 2016. WPI inflation on MoM basis increased by 0.4% in December 2017 as compared to an increase of 0.4% a month earlier and a decrease of 0.1% in corresponding month of last year i.e. December 2016.
6. Figures 1 and 2 show graphically the data of Table 1. Table 1.1 shows "Period Average" and "YoY" percent changes in indices of three years.

Table 1: Inflation (%) (Base 2007-08)

Period	CPI						Core Inflation				SPI**		WPI	
	General		Food		Non-food		NFNE*		Trimmed		YoY	MoM	YoY	MoM
	YoY	MoM	YoY	MoM	YoY	MoM	YoY	MoM	YoY	MoM				
Nov-16	3.8	0.2	3.3	0.2	4.1	0.2	5.3	0.2	3.8	0.2	0.6	0.3	2.6	-0.2
Dec-16	3.7	-0.7	3.0	-1.9	4.2	0.2	5.2	0.1	3.7	0.1	0.5	-0.8	3.1	-0.1
Jan-17	3.7	0.2	2.6	-1.0	4.4	1.0	5.4	1.1	3.8	0.6	0.4	-0.8	4.2	0.5
Feb-17	4.2	0.3	3.7	0.3	4.6	0.3	5.3	0.2	4.1	0.2	1.1	0.2	5.3	0.5
Mar-17	4.9	0.8	5.0	1.9	4.9	0.1	5.3	0.1	4.5	0.2	3.1	1.8	6.4	0.7
Apr-17	4.8	1.4	4.4	1.7	5.1	1.2	5.5	1.3	4.8	0.8	2.3	-0.9	6.0	0.9
May-17	5.0	0.0	4.9	-0.2	5.1	0.2	5.5	0.2	4.8	0.2	2.4	-0.9	5.2	-0.2
Jun-17	3.9	-0.4	2.4	-1.1	5.0	0.1	5.5	0.1	4.2	0.0	1.4	0.1	3.3	-0.5
Jul-17	2.9	0.3	-0.1	0.0	5.1	0.5	5.6	0.7	4.0	0.4	-0.4	-0.5	0.7	-0.2
Aug-17	3.4	0.2	1.3	0.4	5.0	0.1	5.5	0.1	4.2	0.1	-0.1	0.5	1.0	0.3
Sep-17	3.9	0.6	2.4	1.3	4.9	0.2	5.4	0.1	4.10	0.1	1.9	2.1	1.6	0.1
Oct-17	3.8	0.7	2.2	0.6	4.9	0.8	5.3	0.9	4.0	0.6	2.1	0.9	2.3	0.6
Nov-17	4.0	0.4	2.4	0.4	5.1	0.4	5.5	0.3	4.2	0.3	2.1	0.3	2.9	0.4
Dec-17	4.6	-0.1	3.8	-0.6	5.1	0.2	5.5	0.2	4.7	0.2	2.2	-0.7	3.4	0.4

*NFNE is non-food non-energy, ** SPI for quintile 1. Digits 0.0* are due to rounding off.

Table 1.1 : Period Average and YoY % Changes of Indices (Base 2007-08)

Index	Averages July-December % Changes			December over December % Changes		
	2017-18	2016-17	2015-16	2017	2016	2015
CPI	3.75	3.88	2.08	4.57	3.70	3.19
SPI	1.33	1.35	0.26	2.24	0.53	2.91
WPI	1.96	3.06	-2.35	3.39	3.08	-0.42

Figure 2: CPI Inflation MoM, Special Indices

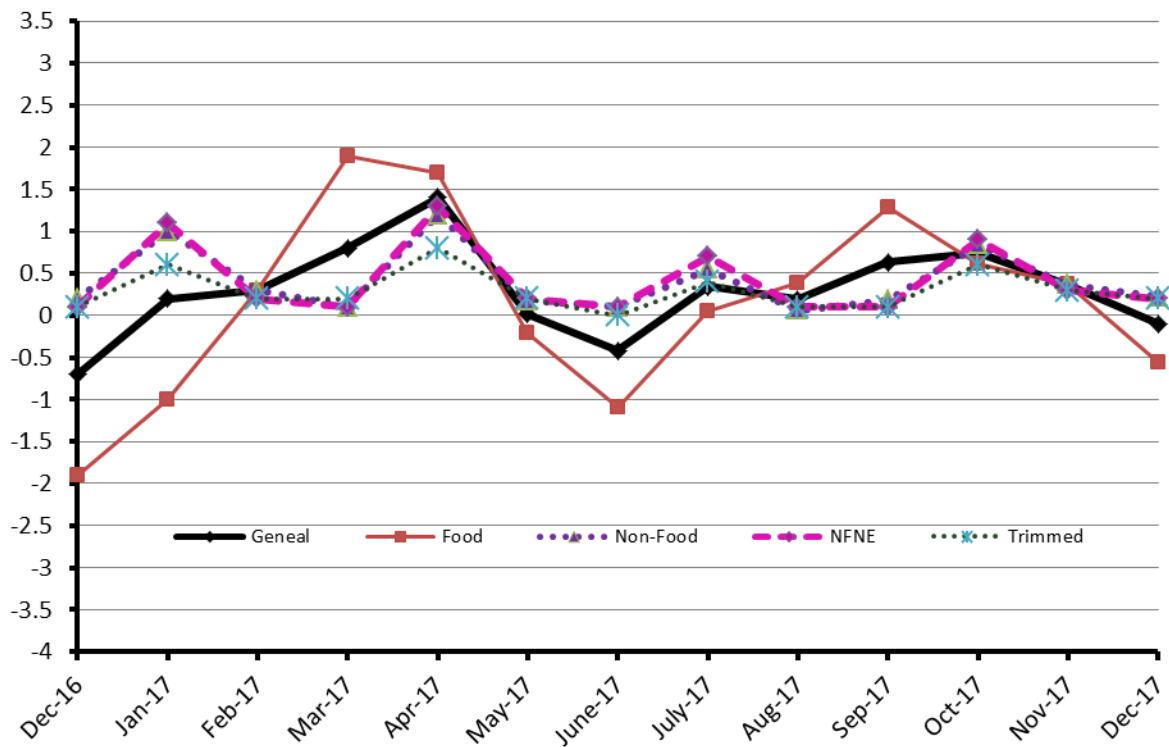
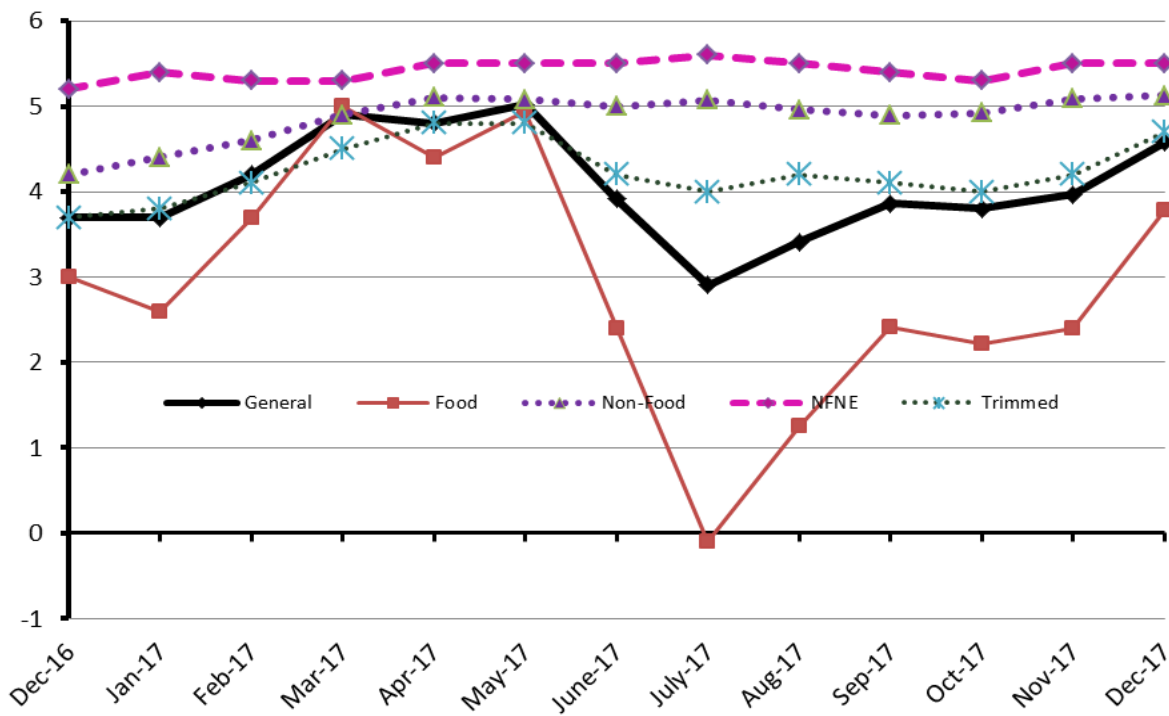


Figure 1: CPI Inflation YoY, Special Indices



II. Consumer Price Index (CPI)

The Consumer Price Index of December 2017, is decreased by 0.37% over November 2017 and increased by 4.57% over corresponding month of the last year i.e. December 2016.

Table 2 : Consumer Price Index by Group of Commodities and Services (Base 2007-08)

No	Group	Group Weight (%)	Indices			% Change December 2017 Over		Impact (In % points) December 2017 Over	
			Dec 2017	Nov 2017	Dec 2016	Nov 2017	Dec 2016	Nov 2017	Dec 2016
	General	100.00	220.20	220.42	210.57	-0.10	4.57	-0.10	4.57
1.	Food & Non-alcoholic Bev.	34.83	235.12	236.61	223.58	-0.63	5.16	-0.24	1.91
	Non-perishable Food Items	29.84	229.97	227.94	224.79	0.89	2.30	0.27	0.73
	Perishable Food Items	4.99	265.91	288.45	216.30	-7.81	22.94	-0.51	1.18
2.	Alcoholic Bev. & Tobacco	1.41	305.76	305.51	373.34	0.08	-18.10	0.00	-0.45
3.	Clothing & Footwear	7.57	241.98	241.01	233.48	0.40	3.64	0.03	0.31
4.	Housing, Water, Electricity, Gas & Fuels	29.41	201.02	200.94	191.70	0.04	4.86	0.01	1.30
5.	Furnishing & Household Equipment Maintenance	4.21	230.93	230.52	223.65	0.18	3.26	0.01	0.15
6.	Health	2.19	217.33	214.79	195.93	1.18	10.92	0.03	0.22
7.	Transport	7.20	179.67	178.51	172.01	0.65	4.45	0.04	0.26
8.	Communication	3.22	133.15	133.14	131.53	0.01	1.23	0.00	0.02
9.	Recreation & Culture	2.02	197.65	197.14	196.50	0.26	0.59	0.00	0.01
10.	Education	3.94	262.35	262.35	233.40	0.00	12.40	0.00	0.54
11.	Restaurants & Hotels	1.23	285.32	284.76	268.22	0.20	6.38	0.00	0.10
12.	Miscellaneous	2.76	253.23	252.27	237.77	0.38	6.50	0.01	0.20

Main contributors to month-on-month and year-on-year percentage changes are given below and detail is given in Annexure A.

1. Month-on-month Top few commodities which varied from previous month are given below:-

Food Items Increased: Chicken (23.67%), Betel Leaves & Nuts (4.67%), Dry Fruits (1.76%), Rice (1.18%) and Wheat (1.09%).

Decreased: Tomatoes (30.16%), Onion (21.91%), Pulse Mash (3.83%), Fresh Vegetables (3.83%), Pulse Moong (3.24%), Pulse Masoor (2.75%), Eggs (2.73%) and Pulse Gram (1.66%).

Non-food Items Increased: Kerosene Oil (4.39%), Doctor MBBS Fee (3.08%), Woolen Readymade Garments (1.92%), Motor Fuel (1.69%), Construction wage Rates (0.96%) and Construction Input Items (0.90%).

Decreased: Motor Vehicle Accessories (0.03%) and Household Equipments (0.02%).

2. Year-on-Year: Top few commodities which varied from previous year i.e. December 2016 are given below:-

Food Items Increased: Onion (130.36%), Tomatoes (49.35%), Potatoes (21.52%), Chicken (21.21%), Betel Leaves & Nuts (16.18%), Rice (15.12%), Fresh Vegetables (12.04%), Meat (7.69%), Tea (7.59%), Honey (6.90%), Fresh Fruits (6.58%) and Readymade Food (6.38%).

Decreased: Pulse Gram (28.85%), Pulse Mash (27.41%), Pulse Moong (21.19%), Pulse Masoor (20.68%), Besan (20.25%), Cigarettes (18.47%) Sugar (13.45%) and Gram Whole (7.64%).

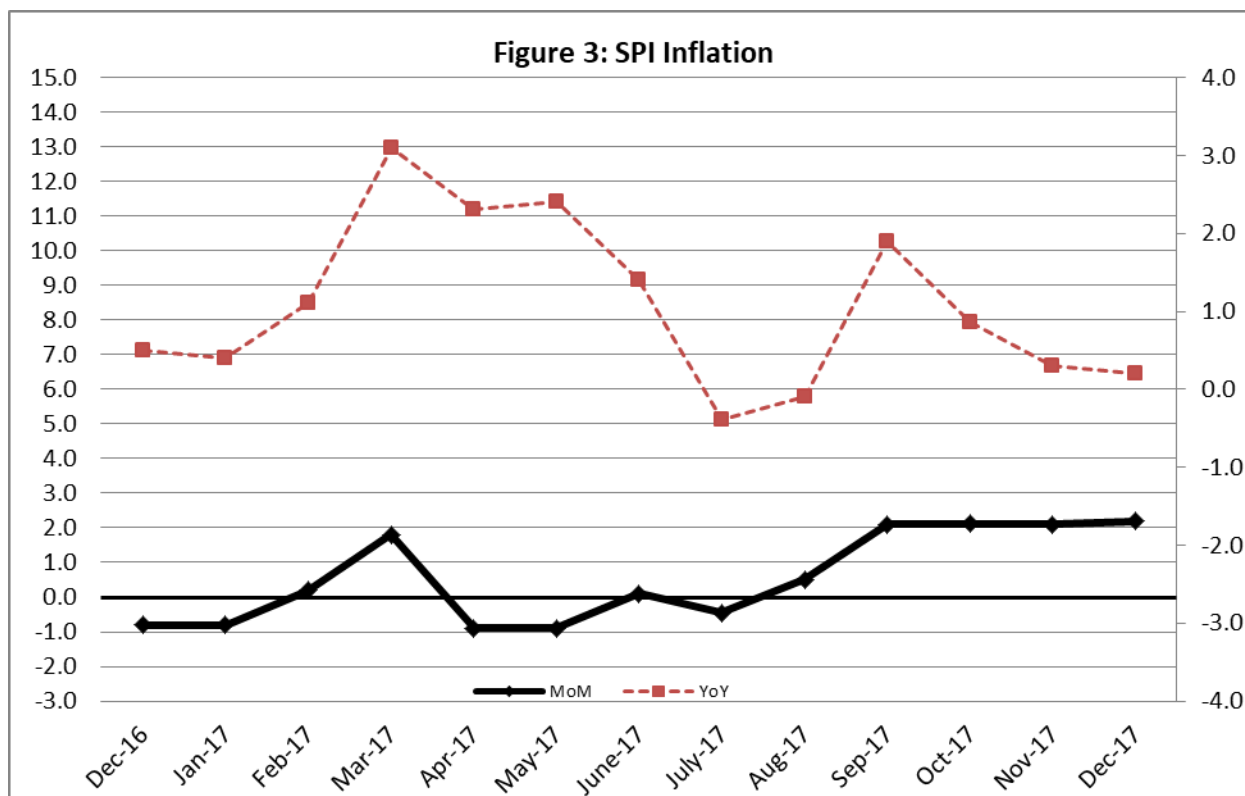
Non-food Items Increased: Drugs & Medicines (14.82%), Kerosene Oil (13.51%), Education (12.40%), Motor Fuel (11.07%), Personal Equipments (8.30%), Doctor MBBS Fee (7.60%), Construction wage Rates (7.31%), Medical Tests (6.78%), Tailoring (6.77%), House Rent (6.49%) and Personal Care (6.08%).

III. Sensitive Price Indicator

Quintile-wise percentage changes YoY and MoM are given below in Table 3. The series from December 2016 to December 2017 is also graphed below in Figure 3.

Table 3: Sensitive Price Indicator (Base 2007-08)					
Quintiles	Indices			% Change December 2017 over	
	December 2017	November 2017	December 2016	November 2017	December 2016
1	215.47	216.93	210.74	-0.67	2.24
2	223.27	224.40	218.08	-0.50	2.38
3	224.68	225.65	219.12	-0.43	2.54
4	229.09	229.75	223.75	-0.29	2.39
5	226.47	226.63	220.49	-0.07	2.71
Combined	225.66	226.29	219.73	-0.28	2.70

Table 3.1 : Weekly Percentage Change of SPI During December-17					
Quintiles	% Change with Previous week				
	7 th Dec-2017	14 th Dec-2017	21 st Dec-2017	28 th Dec-2017	
Quantile 1	-0.19	0.20	0.05	-0.08	
Combined	-0.13	0.34	0.16	0.04	



IV. Wholesale Price Index

The Wholesale Price Index for December, 2017 increased by 0.36% over November, 2017. It increased by 3.39% over the corresponding month of the last year. YoY and MoM movements, from December, 2016 to December, 2017 are also graphed below in Figure 4.

Table 4 : Wholesale Price Index by Group of Commodities (Base 2007-08)

No.	Group	Group Weight (%)	Indices			% Change December, 2017 over		Impact (in %age points) December, 2017 over	
			Dec. 2017	Nov. 2017	Dec. 2016	Nov. 2017	Dec. 2016	Nov. 2017	Dec. 2016
	General	100.00	221.00	220.20	213.76	0.36	3.39	0.36	3.39
1.	Agriculture, Forestry & Fishery Products	25.77	252.94	252.96	240.83	-0.01	5.03	0.00	1.46
2.	Ores & Minerals, Electricity, Gas & Water	12.04	243.79	243.05	242.61	0.30	0.49	0.04	0.07
3.	Food Products, Beverages & Tobacco, Textiles, Apparel & Leather Products	31.11	227.93	227.21	224.74	0.32	1.42	0.10	0.46
	i. Food Products, Bev. & Tobacco	20.07	238.68	237.59	236.67	0.46	0.85	0.10	0.19
	ii. Textiles and Apparel	10.33	209.26	209.22	203.15	0.02	3.01	0.00	0.30
	iii. Leather Products	0.71	195.77	195.77	201.69	0.00	-2.94	0.00	-0.02
4.	Other Transportable Goods except Metal Products, Machinery & Equipment	22.37	179.11	176.98	167.14	1.20	7.16	0.22	1.25
5.	Metal Products, Machinery & Equipment	8.72	177.80	177.63	174.28	0.10	2.02	0.01	0.14

Main contributors to month-on-month and year-on-year percentage changes are given below and detail is given in Annexure B.

1. **Month-on-month** Top few commodities which varied from previous month i.e. November, 2017 are given below:-

Increased: Poultry (29.66%), Potatoes (9.01%), Kerosene Oil (8.27%), Fresh Fruits (7.02%), Jowar (4.44%), Dry Fruits (3.88%), Diesel (3.71%), Salt & Pure Sodium Chloride (3.49%), Dried Fruits & Nuts (3.30%), Unmanufactured Tobacco (2.99%), Blankets (2.75%), Maize (2.25%), Petrol (1.95%), Fertilizers (1.79%), Woven Fabrics (1.65%), Fish (1.59%), Sugar (1.45%), Chemicals (1.32%) and Rice (1.29%).

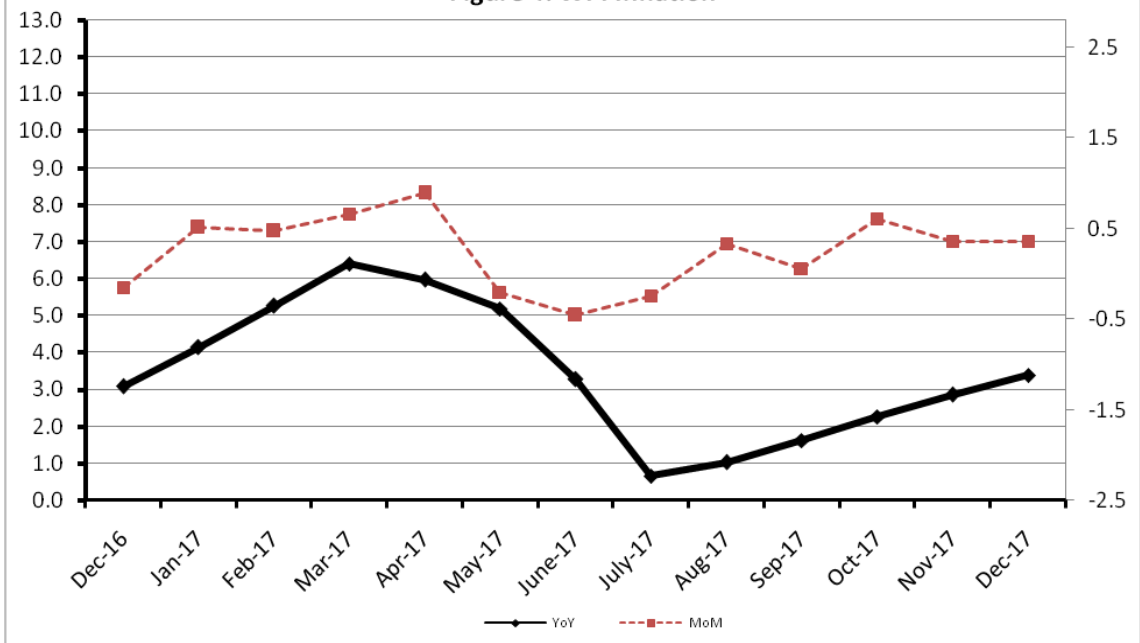
Decreased: Vegetables (13.10%), Stimulant & Spice Crops (5.72%), Sugar Crops (4.21%), Other Cereal Flour (2.77%), Eggs (2.71%), Pulses (2.24%) and Furnace Oil (1.61%).

2. **Year-on-year** Top few commodities which varied from previous year i.e. December, 2016 are given below:-

Increased: Vegetables (45.71%), Kerosene Oil (33.25%), Poultry (27.56%), Potatoes (24.44%), Stimulant & Spice Crops (16.93%), Petrol (16.91%), Diesel (16.90%), Rice (14.11%), Furnace Oil (13.91%), Unmanufactured Tobacco (12.61%), Ice Cream (11.75%) and Steel Bar & Sheets (11.63%).

Decreased: Other Cereal Flour (33.19%), Tobacco Products (26.82%), Pulses (16.85%), Sugar (12.85%) and Hides & Fur Skins (9.75%).

Figure 4: WPI Inflation



Annexure A:CPI by Commodity Groups and Commodities (2007-08=100)

Item and Specification	Weight	Index Numbers			% Change in Dec 2017 over			
		Dec 2017	Nov 2017	Dec 2016	Nov 2017	Dec 2016		
<i>General</i>	100.0000	220.20	220.42	210.57	-	0.10	+	4.57
<i>Food and non-alcoholic Beverages</i>	34.8343	235.12	236.61	223.58	-	0.63	+	5.16
1 Wheat	0.3477	203.16	200.97	205.54	+	1.09	-	1.16
2 Wheat Flour	4.1648	212.54	211.55	213.35	+	0.47	-	0.38
3 Wheat Product	0.0959	215.00	213.19	217.16	+	0.85	-	0.99
4 Besan	0.1500	279.43	280.28	350.39	-	0.30	-	20.25
5 Rice	1.5821	184.97	182.82	160.68	+	1.18	+	15.12
6 Cereals	0.1563	257.59	257.56	253.48	+	0.01	+	1.62
7 Bakery & Confectionary	1.1550	222.54	221.90	216.31	+	0.29	+	2.88
8 Nimco	0.4574	257.02	256.90	250.57	+	0.05	+	2.57
9 Meat	2.4303	287.23	285.83	266.71	+	0.49	+	7.69
10 Chicken	1.3596	190.64	154.15	157.28	+	23.67	+	21.21
11 Fish	0.2970	219.86	217.74	218.75	+	0.97	+	0.51
12 Milk Fresh	6.6800	277.89	277.08	267.57	+	0.29	+	3.86
13 Milk Products	0.6338	268.37	268.37	257.72	+	0.00	+	4.13
14 Milk Powder	0.1129	237.44	236.83	236.55	+	0.26	+	0.38
15 Eggs	0.4555	265.77	273.24	258.52	-	2.73	+	2.80
16 Mustard Oil	0.0952	162.61	161.96	156.65	+	0.40	+	3.80
17 Cooking Oil	1.7538	138.59	138.58	134.91	+	0.01	+	2.73
18 Vegetable Ghee	2.0714	143.53	143.68	139.83	-	0.10	+	2.65
19 Dry Fruits	0.2543	274.40	269.66	265.05	+	1.76	+	3.53
20 Fresh Fruits	1.8649	225.51	224.34	211.59	+	0.52	+	6.58
21 Pulse Masoor	0.2712	163.83	168.46	206.54	-	2.75	-	20.68
22 Pulse Moong	0.2336	215.02	222.21	272.85	-	3.24	-	21.19
23 Pulse Mash (Washed)	0.2098	232.82	242.09	320.74	-	3.83	-	27.41
24 Pulse Gram	0.2361	265.48	269.96	373.11	-	1.66	-	28.85
25 Gram Whole	0.1616	294.07	296.37	318.41	-	0.78	-	7.64
26 Beans	0.0269	240.94	242.81	230.80	-	0.77	+	4.39
27 Potatoes	0.4598	287.74	289.11	236.78	-	0.47	+	21.52
28 Onion	0.5239	373.37	478.11	162.08	-	21.91	+	130.36
29 Tomatoes	0.4318	244.37	349.90	163.62	-	30.16	+	49.35
30 Fresh Vegetables	1.7105	276.29	287.30	246.60	-	3.83	+	12.04
31 Sugar	1.0445	195.22	193.86	225.55	+	0.70	-	13.45
32 Gur	0.0220	260.27	259.06	268.12	+	0.47	-	2.93
33 Honey	0.0446	339.20	338.91	317.30	+	0.09	+	6.90
34 SweetMeat	0.2483	254.71	254.71	245.95	+	0.00	+	3.56
35 Beverages	1.1990	225.93	226.48	218.49	-	0.24	+	3.41
36 Jam, Tomato Ketchup & Pickles	0.2454	223.90	223.06	216.60	+	0.38	+	3.37
37 Condiments	0.2656	274.69	273.73	265.42	+	0.35	+	3.49
38 Spices	0.5441	238.45	239.01	238.63	-	0.23	-	0.08
39 Tea	0.8377	284.22	283.98	264.16	+	0.08	+	7.59
<i>Alcoholic Beverages, Tobacco</i>	1.4135	305.76	305.51	373.34	+	0.08	-	18.10
40 Cigarettes	1.3906	306.13	306.09	375.47	+	0.01	-	18.47
41 Betel Leaves & Nuts	0.0229	283.31	270.67	243.86	+	4.67	+	16.18
<i>Clothing and footwear</i>	7.5708	241.98	241.01	233.48	+	0.40	+	3.64
42 Cotton Cloth	1.7286	234.53	234.28	225.47	+	0.11	+	4.02
43 Woolen Cloth	0.8759	259.82	259.17	253.61	+	0.25	+	2.45
44 Readymade Garments	0.9739	250.26	248.53	239.41	+	0.70	+	4.53
45 Woolen Readymade Garments	0.3964	268.48	263.43	262.60	+	1.92	+	2.24
46 Hosiery	0.5094	254.53	252.67	245.88	+	0.74	+	3.52

Annexure A:CPI by Commodity Groups and Commodities (2007-08=100)

Item and Specification	Weight	Index Numbers			% Change in Dec 2017 over		
		Dec 2017	Nov 2017	Dec 2016	Nov 2017	Dec 2016	
47 Dopatta	0.4412	249.21	248.38	243.24	+	0.33	+ 2.45
48 Cleaning and Laundry	0.2110	275.28	273.92	257.94	+	0.50	+ 6.72
49 Tailoring	0.8840	329.52	328.50	308.64	+	0.31	+ 6.77
50 Footwear	1.5504	167.58	167.51	166.82	+	0.04	+ 0.46
<u>Housing, water, Elec., Gas and other fuels</u>	29.4149	201.02	200.94	191.70	+	0.04	+ 4.86
51 House Rent	21.8149	194.05	194.05	182.22	+	0.00	+ 6.49
52 Construction Input Items	0.5623	259.48	257.16	249.23	+	0.90	+ 4.11
53 Construction Wage Rates	0.3331	251.20	248.82	234.08	+	0.96	+ 7.31
54 Water Supply	0.4971	171.58	171.58	164.74	+	0.00	+ 4.15
55 Electricity	4.3985	238.10	238.10	238.10	+	0.00	+ 0.00
56 Gas	1.5756	158.08	158.08	158.08	+	0.00	+ 0.00
57 Kerosene Oil	0.0057	225.46	215.98	198.63	+	4.39	+ 13.51
58 Firewood Whole	0.2277	295.82	295.15	290.35	+	0.23	+ 1.88
<u>Furnishing and household equipment</u>	4.2082	230.93	230.52	223.65	+	0.18	+ 3.26
59 Furniture	0.3315	224.47	223.87	215.42	+	0.27	+ 4.20
60 Household Textiles	0.6489	234.44	233.22	226.07	+	0.52	+ 3.70
61 Household Equipment	0.5936	183.53	183.57	179.28	-	0.02	+ 2.37
62 Utensils	0.3212	238.03	236.75	225.53	+	0.54	+ 5.54
63 Plastic Products	0.2547	215.30	215.02	208.70	+	0.13	+ 3.16
64 Washing Soaps & Detergents	0.7893	233.55	233.40	229.76	+	0.06	+ 1.65
65 Sewing Needle & Dr Cell	0.1496	209.80	209.80	202.74	+	0.00	+ 3.48
66 Household Servant	1.0432	258.89	258.89	249.98	+	0.00	+ 3.56
67 Marriage Hall Charges	0.0762	252.09	249.98	243.95	+	0.84	+ 3.34
<u>Health</u>	2.1868	217.33	214.79	195.93	+	1.18	+ 10.92
68 Drugs & Medicines	1.2667	186.36	186.14	162.31	+	0.12	+ 14.82
69 Medical Equipments	0.0080	255.46	253.69	248.70	+	0.70	+ 2.72
70 Doctor (MBBS) Clinic Fee	0.5904	290.92	282.22	270.37	+	3.08	+ 7.60
71 Medical Tests	0.3217	203.28	202.91	190.38	+	0.18	+ 6.78
<u>Transport</u>	7.2023	179.67	178.51	172.01	+	0.65	+ 4.45
72 Motor Vehicles	0.6630	177.95	177.84	171.60	+	0.06	+ 3.70
73 Motor Vehicle Accessories	0.2439	214.92	214.98	213.37	-	0.03	+ 0.73
74 Motor Fuel	3.0269	155.48	152.90	139.99	+	1.69	+ 11.07
75 Mechanical Service	0.4552	233.41	233.00	227.84	+	0.18	+ 2.44
76 Motor Vehicle Tax	0.1099	210.18	210.18	210.18	+	0.00	+ 0.00
77 Transport Services	2.7034	193.71	193.59	193.28	+	0.06	+ 0.22
<u>Communication</u>	3.2198	133.15	133.14	131.53	+	0.01	+ 1.23
78 Postal Services	0.0662	253.38	253.38	244.89	+	0.00	+ 3.47
79 Communication & Apparatus	3.1536	130.62	130.62	129.15	+	0.00	+ 1.14
<u>Recreation and culture</u>	2.0227	197.65	197.14	196.50	+	0.26	+ 0.59
80 Recreation & Culture	0.8634	130.44	130.03	129.41	+	0.32	+ 0.80
81 Text Books	0.5706	287.98	287.98	292.41	+	0.00	- 1.51
82 Newspapers	0.1934	184.59	184.40	177.62	+	0.10	+ 3.92
83 Stationery	0.3953	220.48	218.82	213.85	+	0.76	+ 3.10
<u>Education</u>	3.9431	262.35	262.35	233.40	+	0.00	+ 12.40
84 Education	3.9431	262.35	262.35	233.40	+	0.00	+ 12.40
<u>Restaurants and hotels</u>	1.2286	285.32	284.76	268.22	+	0.20	+ 6.38
85 Readymade Food	1.2286	285.32	284.76	268.22	+	0.20	+ 6.38
<u>Misc. goods and services</u>	2.7550	253.23	252.27	237.77	+	0.38	+ 6.50
86 Personal Care	1.4935	232.45	231.98	219.13	+	0.20	+ 6.08
87 Cosmetics	0.3853	207.40	206.64	201.47	+	0.37	+ 2.94
88 Blades	0.0322	201.21	200.95	195.66	+	0.13	+ 2.84
89 Personal Equipments	0.8440	312.92	310.95	288.94	+	0.63	+ 8.30

Annexure B: Wholesale Price Indices by Major Groups & Commodities

(2007-08=100)

Item and Specification	Weight	Index Numbers			% Change in Dec 2017 over			
		Dec 17	Nov 17	Dec 16	Nov 2017	Dec 2016		
General	100.0000	221.00	220.20	213.76	+	0.36	+	3.39
Agriculture Forestry & Fisher	25.7674	252.94	252.96	240.83	-	0.01	+	5.03
001 Wheat	0.6297	207.62	205.94	212.55	+	0.82	-	2.32
002 Maize	0.6764	197.32	192.98	186.79	+	2.25	+	5.64
003 Rice	2.4413	169.19	167.04	148.27	+	1.29	+	14.11
004 Sorghum / Jowar	0.0214	226.29	216.66	236.86	+	4.44	-	4.46
005 Millet / Bajra	0.0374	169.85	169.49	168.85	+	0.21	+	0.59
006 Vegetables	1.2441	332.34	382.44	228.09	-	13.10	+	45.71
007 Fresh Fruits	1.5144	231.15	215.99	209.13	+	7.02	+	10.53
008 Dry Fruits	0.2478	258.63	248.97	249.28	+	3.88	+	3.75
009 Cotton Seeds	1.1511	255.91	254.01	267.33	+	0.75	-	4.27
010 Other Oil Seeds	0.0722	194.71	194.39	182.29	+	0.16	+	6.81
011 Edible Roots / Potatoes	0.2540	295.50	271.08	237.47	+	9.01	+	24.44
012 Stimulant & Spice Crops	0.1634	265.09	281.17	226.70	-	5.72	+	16.93
013 Pulses	0.4901	254.88	260.73	306.52	-	2.24	-	16.85
014 Sugar Crops	1.0725	257.62	268.94	268.94	-	4.21	-	4.21
015 Fibre Crops	5.3169	208.95	208.95	204.48	+	0.00	+	2.19
016 Unmanufactured Tobacco	0.0742	305.98	297.10	271.72	+	2.99	+	12.61
017 Poultry	0.5633	204.55	157.76	160.36	+	29.66	+	27.56
018 Raw Milk from Bovine Animals	7.0279	272.70	272.70	267.02	+	0.00	+	2.13
019 Eggs	0.5034	281.12	288.96	272.03	-	2.71	+	3.34
020 Raw Animal Materials / Wool	0.0351	173.34	173.53	175.58	-	0.11	-	1.28
021 Hides & Fur Skins, Raw	0.4834	104.78	103.77	116.10	+	0.97	-	9.75
022 Fuel Wood in Logs	0.0179	283.56	282.69	274.82	+	0.31	+	3.18
023 Fish Live Fresh or Chilled	1.7295	465.17	457.89	447.84	+	1.59	+	3.87
Ores/Minerals, Elec., Gas & W	12.0389	243.79	243.05	242.61	+	0.30	+	0.49
024 Coal not Agglomerated	0.7508	155.29	155.29	155.29	+	0.00	+	0.00
025 Natural Gas Liquefied	5.7385	212.93	211.46	210.67	+	0.70	+	1.07
026 Salt & Pure Sodium Chloride	0.0584	257.14	248.46	235.45	+	3.49	+	9.21
027 Electrical Energy	5.4912	288.00	288.00	288.00	+	0.00	+	0.00
Food, Beverages, Tobacco, Textil	31.1122	227.93	227.21	224.74	+	0.32	+	1.42
Food Products, Beverages &	20.0718	238.68	237.59	236.67	+	0.46	+	0.85
028 Meat of Animals	3.4559	309.09	306.11	280.41	+	0.97	+	10.23
029 Vegetables & Fruit Juice	0.0058	226.05	224.22	214.03	+	0.82	+	5.62
030 Dried Fruits & Nuts	0.1733	291.10	281.80	261.81	+	3.30	+	11.19
031 Fruit Juices	0.3880	182.56	182.53	179.33	+	0.02	+	1.80
032 Vegetable Oils Refined	1.9242	154.77	154.34	152.35	+	0.28	+	1.59
033 Vegetable Ghee	1.5632	126.41	126.25	125.82	+	0.13	+	0.47
034 Oil Cakes	0.9611	228.61	228.88	229.61	-	0.12	-	0.44
035 Processed Liquid Milk	4.4437	286.83	286.83	257.57	+	0.00	+	11.36
036 Milk & Cream in Solid Form	0.0316	223.69	223.74	218.90	-	0.02	+	2.19
037 Ice Cream	0.0047	266.02	266.02	238.04	+	0.00	+	11.75
038 Dairy Products N.E.C	0.0117	266.50	264.68	252.95	+	0.69	+	5.36
039 Wheat Flour	2.3034	197.14	195.25	196.85	+	0.97	+	0.15
040 Other Cereal Flour	0.0604	219.79	226.05	328.97	-	2.77	-	33.19
041 Sugar Refined	1.7975	205.52	202.58	235.83	+	1.45	-	12.85
042 Chocolate	0.0139	100.00	100.00	100.00	+	0.00	+	0.00
043 Sugar Confectionary	0.0738	128.44	128.44	128.44	+	0.00	+	0.00
044 Coffee & Tea	0.7303	253.26	253.35	240.04	-	0.04	+	5.51
045 Spices	0.1449	202.03	201.96	190.44	+	0.03	+	6.09
046 Other Food Products	0.0336	294.50	294.50	293.85	+	0.00	+	0.22
047 Mineral Water	0.0207	208.14	207.93	198.57	+	0.10	+	4.82
048 Beverages	0.6303	172.85	172.85	172.33	+	0.00	+	0.30
049 Tobacco Products	1.2998	318.37	318.37	435.03	+	0.00	-	26.82
Textiles & Apparels	10.3289	209.26	209.22	203.15	+	0.02	+	3.01
050 Cotton Yarn	5.2491	204.94	204.94	194.35	+	0.00	+	5.45
051 Nylon Yarn	0.1719	143.99	143.99	143.99	+	0.00	+	0.00
052 Blended Yarn	0.1689	186.96	186.96	180.58	+	0.00	+	3.53
053 Woven Fabrics	0.0128	321.49	316.28	310.72	+	1.65	+	3.47
054 Cotton Fabrics	0.6343	212.00	211.50	209.34	+	0.24	+	1.27
055 Other Fabrics	1.1016	227.16	227.16	224.40	+	0.00	+	1.23
056 Silk & Reyon Fabrics	0.7350	188.14	188.14	189.21	+	0.00	-	0.57
057 Towels	0.1235	276.14	276.14	271.17	+	0.00	+	1.83
058 Blankets	0.0029	265.03	257.93	247.52	+	2.75	+	7.07
059 Bed Sheets	0.0913	256.87	256.87	257.96	+	0.00	-	0.42

Annexure B: Wholesale Price Indices by Major Groups & Commodities

(2007-08=100)

Item and Specification	Weight	Index Numbers			% Change in Dec 2017 over	
		Dec 17	Nov 17	Dec 16	Nov 2017	Dec 2016
060 Quilts	0.0019	222.32	222.32	203.79	+ 0.00	+ 9.09
061 Woolen Carpets	0.0383	196.43	196.43	196.43	+ 0.00	+ 0.00
062 Synthetic Carpets	0.0566	130.95	130.95	129.25	+ 0.00	+ 1.32
063 Hosiery Products	0.8832	244.11	244.11	241.83	+ 0.00	+ 0.94
064 Readymade Garments	1.0576	201.37	201.37	201.70	+ 0.00	- 0.16
Leather Products	0.7115	195.77	195.77	201.69	+ 0.00	- 2.94
065 Leather Without Hair	0.2973	212.68	212.68	226.61	+ 0.00	- 6.15
066 Other Leather N.E.C	0.2567	207.02	207.02	207.31	+ 0.00	- 0.14
067 Footwears	0.1575	145.51	145.51	145.51	+ 0.00	+ 0.00
Other Transportable Goods	22.3659	179.11	176.98	167.14	+ 1.20	+ 7.16
068 Timber	0.0165	231.53	231.53	225.41	+ 0.00	+ 2.72
069 Printing Paper	0.4279	166.45	166.45	165.63	+ 0.00	+ 0.50
070 Hard Board	0.1579	225.00	225.00	220.83	+ 0.00	+ 1.89
071 Coke	0.2797	163.45	163.45	163.45	+ 0.00	+ 0.00
072 Motor Spirit	1.5336	130.85	128.35	111.92	+ 1.95	+ 16.91
073 Diesel Oil	5.2664	172.21	166.05	147.31	+ 3.71	+ 16.90
074 Kerosine Oil	0.2151	153.38	141.66	115.11	+ 8.27	+ 33.25
075 Furnace Oil	3.2664	110.34	112.15	96.87	- 1.61	+ 13.91
076 Mobil Oil	0.7114	200.62	200.62	196.91	+ 0.00	+ 1.88
077 Chemicals	1.7720	182.27	179.89	175.83	+ 1.32	+ 3.66
078 Dyeing Material	0.1539	146.55	146.55	146.55	+ 0.00	+ 0.00
079 Fertilizers	2.8657	223.94	220.00	215.07	+ 1.79	+ 4.12
080 Pesticides	0.2763	305.84	307.23	304.43	- 0.45	+ 0.46
081 Insecticides	0.1276	137.12	137.12	138.00	+ 0.00	- 0.64
082 Paints & Varnishes	0.1916	299.42	299.42	296.43	+ 0.00	+ 1.01
083 Medicines	1.1428	177.01	176.89	168.57	+ 0.07	+ 5.01
084 Soaps & Detergents	0.8168	191.76	191.45	190.20	+ 0.16	+ 0.82
085 Auto Tyres	0.2703	177.07	177.07	176.87	+ 0.00	+ 0.11
086 Plastic Products	0.4550	226.00	226.00	225.73	+ 0.00	+ 0.12
087 Glass sheets	0.2089	302.27	302.27	297.20	+ 0.00	+ 1.71
088 Other Glass Articles	0.1635	318.10	318.10	305.47	+ 0.00	+ 4.13
089 Ceramics & Sanitary Fixture	0.0244	234.59	232.65	234.18	+ 0.83	+ 0.18
090 Bricks, Blocks & Tiles	0.1566	223.47	223.21	219.02	+ 0.12	+ 2.03
091 Cement	1.8145	212.17	212.69	213.07	- 0.24	- 0.42
092 Bed Foam	0.0006	171.50	170.33	167.17	+ 0.69	+ 2.59
093 Matches	0.0505	171.36	171.36	162.62	+ 0.00	+ 5.37
Metal Product, Machinery & Eq	8.7156	177.80	177.63	174.28	+ 0.10	+ 2.02
094 Pig Iron	0.0593	128.97	128.97	128.97	+ 0.00	+ 0.00
095 Steel Bar & Sheets	1.4022	141.83	140.75	127.05	+ 0.77	+ 11.63
096 Pipe Fittings	0.0780	215.66	215.66	203.49	+ 0.00	+ 5.98
097 Steel Products	0.3879	176.70	176.70	177.38	+ 0.00	- 0.38
098 Engines & Motors	0.0046	116.98	116.98	116.98	+ 0.00	+ 0.00
099 Vacuum Pumps	0.0155	123.69	123.69	123.69	+ 0.00	+ 0.00
100 Air Conditioners	0.0049	200.10	200.10	199.33	+ 0.00	+ 0.39
101 Cultivators	0.0551	190.66	190.66	190.66	+ 0.00	+ 0.00
102 Chuff Cutter	0.1293	153.46	153.46	153.46	+ 0.00	+ 0.00
103 Tractors	0.0028	201.75	201.75	201.75	+ 0.00	+ 0.00
104 Lathe Machines	0.0525	241.06	241.06	241.06	+ 0.00	+ 0.00
105 Concrete Mixture	0.0107	138.83	138.83	138.83	+ 0.00	+ 0.00
106 Fridge,WashM,SewM,Fans,Iron	1.1645	216.72	216.72	207.15	+ 0.00	+ 4.62
107 Electric Wires	0.0912	205.92	205.92	204.51	+ 0.00	+ 0.69
108 Lighting Equipments	1.4431	170.98	170.98	172.50	+ 0.00	- 0.88
109 Radio & Television	0.1843	140.42	140.42	140.42	+ 0.00	+ 0.00
110 Motor Vehicles	0.0244	195.36	195.36	191.39	+ 0.00	+ 2.07
111 Motorcycles	0.2570	126.05	126.05	125.89	+ 0.00	+ 0.13
112 Bicycles	3.3483	187.65	187.65	187.65	+ 0.00	+ 0.00