



# Monthly Review on Price Indices



**May, 2018**  
**(Base 2007-08)**

**Government of Pakistan**  
**Ministry Of Statistics**  
**Pakistan Bureau of Statistics**  
**Islamabad**



## Inflation in Brief

1. CPI inflation General increased by 4.2% on year-on-year basis in May 2018 as compared to an increase of 3.7% in the previous month and 5.0% in May 2017. On month-on-month basis, it increased by 0.5% in May 2018 as compared to an increase of 1.8% in the previous month and increase of 0.0% in May 2017.
2. Core inflation measured by non-food non-energy CPI (Core NFNE) increased by 7.0% on (YoY) basis in May 2018 as compared to an increase of 7.0% in the previous month and 5.5% in May 2017. On (MoM) basis, it increased by 0.2% in May 2018 as compared to increase of 2.5% in previous month, and an increase of 0.2% in corresponding month of last year i.e. May 2017.
3. Core inflation, measured by 20% weighted trimmed mean CPI (Core Trimmed) increased by 5.1% on (YoY) basis in May 2018 as compared to 5.0% in the previous month and by 4.8% in May 2017. On (MoM) basis, it increased by 0.3% in May 2018 as compared to an increase of 1.6% in the previous month and an increase of 0.2% in corresponding month of last year i.e. May 2017.
4. SPI inflation on YoY increased by 0.5% in May 2018 as compared to a decrease of 0.5% a month earlier and an increase of 2.4% in May 2017. On MoM basis, it increased by 0.1% in May 2018 as compared to an increase of 0.4% a month earlier and a decrease of 0.9% in May 2017.
5. WPI inflation on YoY basis increased by 5.6% in May 2018 as compared to an increase of 4.0% a month earlier and an increase of 5.2% in May 2017. WPI inflation on MoM basis increased by 1.3% in May 2018 as compared to an increase of 1.3 a month earlier and a decrease of 0.2% in corresponding month of last year i.e. May 2017.
6. Figures 1 and 2 show graphically the data of Table 1. Table 1.1 shows "Period Average" and "YoY" percent changes in indices of three years.

Table 1: Inflation (%) (Base 2007-08)														
Period	CPI						Core Inflation				SPI**		WPI	
	General		Food		Non-food		NFNE*		Trimmed		YoY	MoM	YoY	MoM
	YoY	MoM	YoY	MoM	YoY	MoM	YoY	MoM	YoY	MoM				
Apr-17	4.8	1.4	4.4	1.7	5.1	1.2	5.5	1.3	4.8	0.8	2.3	-0.9	6.0	0.9
May-17	5.0	0.0	4.9	-0.2	5.1	0.2	5.5	0.2	4.8	0.2	2.4	-0.9	5.2	-0.2
Jun-17	3.9	-0.4	2.4	-1.1	5.0	0.1	5.5	0.1	4.2	0.0	1.4	0.1	3.3	-0.5
Jul-17	2.9	0.3	-0.1	0.0	5.1	0.5	5.6	0.7	4.0	0.4	-0.4	-0.5	0.7	-0.2
Aug-17	3.4	0.2	1.3	0.4	5.0	0.1	5.5	0.1	4.2	0.1	-0.1	0.5	1.0	0.3
Sep-17	3.9	0.6	2.4	1.3	4.9	0.2	5.4	0.1	4.1	0.1	1.9	2.1	1.6	0.1
Oct-17	3.8	0.7	2.2	0.6	4.9	0.8	5.3	0.9	4.0	0.6	2.1	0.9	2.3	0.6
Nov-17	4.0	0.4	2.4	0.4	5.1	0.4	5.5	0.3	4.2	0.3	2.1	0.3	2.9	0.4
Dec-17	4.6	-0.1	3.8	-0.6	5.1	0.2	5.5	0.2	4.7	0.2	2.2	-0.7	3.4	0.4
Jan-18	4.4	0.0	3.7	-1.0	4.9	0.8	5.2	0.8	4.6	0.6	2.0	-1.0	4.7	1.8
Feb-18	3.8	-0.3	2.2	-1.1	4.9	0.2	5.2	0.2	4.3	0.1	0.5	-1.2	4.1	-0.1
Mar-18	3.2	0.3	0.1	-0.3	5.4	0.7	5.8	0.7	4.1	0.2	-1.8	-0.6	3.6	0.2
Apr-18	3.7	1.8	-0.2	1.5	6.4	2.1	7.0	2.5	5.0	1.6	-0.5	0.4	4.0	1.3
May-18	4.2	0.5	1.0	1.0	6.4	0.2	7.0	0.2	5.1	0.3	0.5	0.1	5.6	1.3

\*NFNE is non-food non-energy, \*\* SPI for quintile 1. Digits 0.0\* are due to rounding off.

Table 1.1 : Period Average and YoY % Changes of Indices (Base 2007-08)						
Index	Average July - May % changes			May over May % changes		
	2017-18	2016-17	2015-16	2018	2017	2016
CPI	3.81	4.18	2.82	4.19	5.02	3.17
SPI	0.78	1.58	1.36	0.49	2.37	0.61
WPI	3.09	4.11	-1.18	5.58	5.18	0.04

Figure 2: CPI Inflation MoM, Special Indices

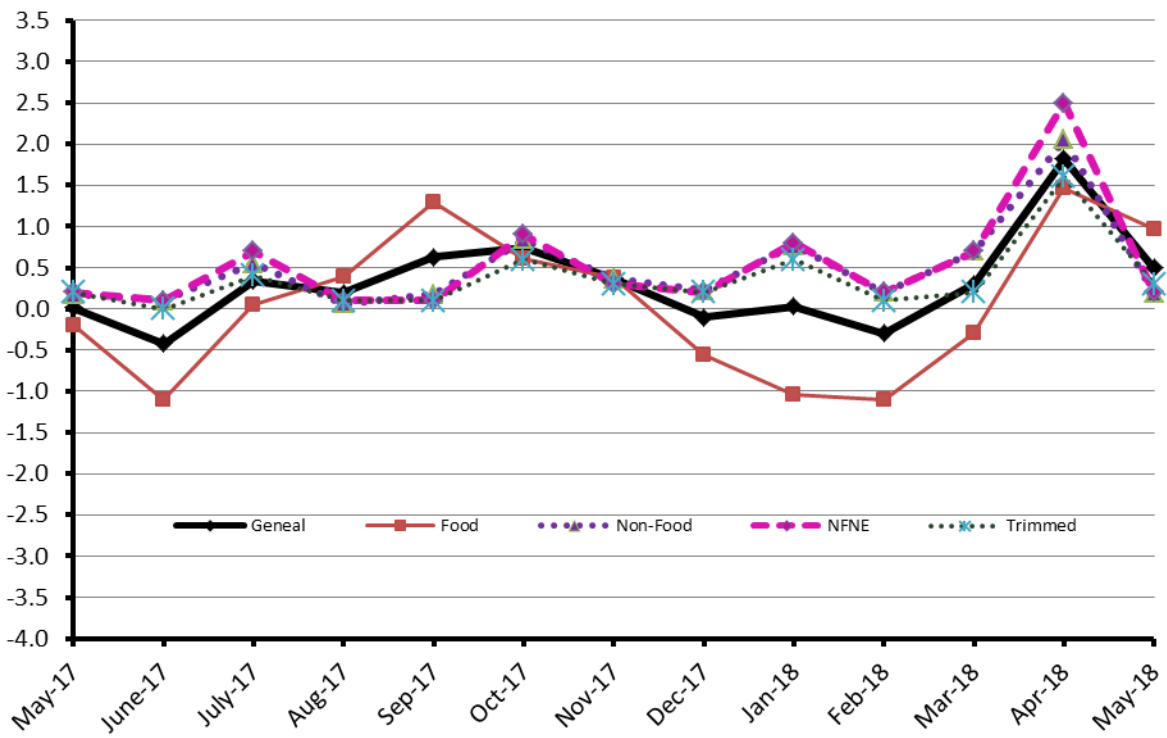
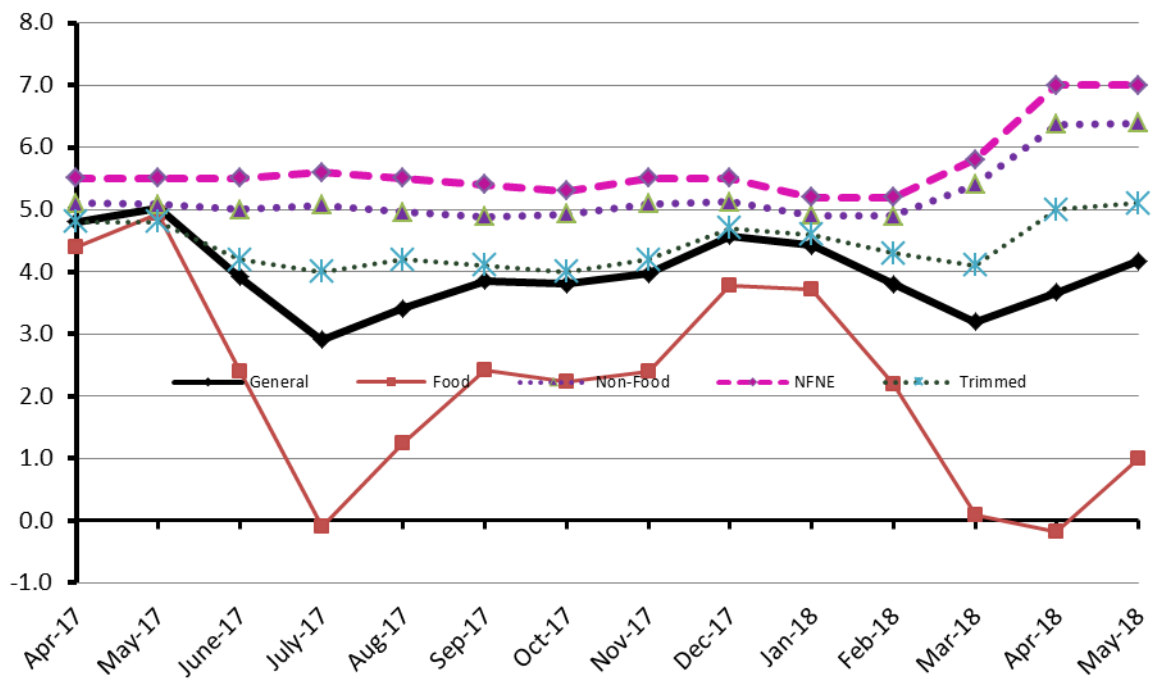


Figure 1: CPI Inflation YoY, Special Indices



## II. Consumer Price Index (CPI)

The Consumer Price Index of May 2018, is increased by 0.51% over April 2018 and increased by 4.18% over corresponding month of the last year i.e. May 2017.

**Table 2 : Consumer Price Index by Group of Commodities and Services (Base 2007-08)**

No	Group	Group Weight (%)	Indices			% Change May 2018 Over		Impact (In % points) May 2018 Over	
			May 2018	Apr 2018	May 2017	Apr 2018	May 2017	Apr 2018	May 2017
	General	100.00	225.40	224.25	216.33	0.51	4.19	0.51	4.19
1.	Food & Non-alcoholic Bev.	34.83	234.40	231.90	229.65	1.08	2.07	0.39	0.76
	Non-perishable Food Items	29.84	233.97	232.93	226.53	0.45	3.28	0.14	1.03
	Perishable Food Items	4.99	236.97	225.72	248.26	4.98	-4.55	0.25	-0.26
2.	Alcoholic Bev. & Tobacco	1.41	315.26	317.70	383.32	-0.77	-17.76	-0.02	-0.44
3.	Clothing & Footwear	7.57	252.58	252.06	236.71	0.21	6.70	0.02	0.56
4.	Housing, Water, Electricity, Gas & Fuels	29.41	207.58	207.35	196.70	0.11	5.53	0.03	1.48
5.	Furnishing & Household Equipment Maintenance	4.21	239.94	239.29	226.42	0.27	5.97	0.01	0.26
6.	Health	2.19	223.74	223.08	212.65	0.30	5.22	0.01	0.11
7.	Transport	7.20	189.16	187.48	176.43	0.90	7.22	0.05	0.42
8.	Communication	3.22	133.67	133.67	132.87	0.00	0.60	0.00	0.01
9.	Recreation & Culture	2.02	208.32	207.96	196.12	0.17	6.22	0.00	0.11
10.	Education	3.94	281.88	281.57	249.23	0.11	13.10	0.01	0.60
11.	Restaurants & Hotels	1.23	292.77	291.05	277.29	0.59	5.58	0.01	0.09
12.	Miscellaneous	2.76	263.91	263.59	245.99	0.12	7.28	0.00	0.23

Main contributors to month-on-month and year-on-year percentage changes are given below and detail is given in Annexure A.

1. **Month-on-month** Top few commodities which varied from previous month are given below:-

**Food Items Increased:** Potatoes (17.62%), Chicken (7.25%), Fresh Fruits (6.01%), Tomatoes (3.07%), Fresh Vegetables (2.62%), Dry Fruits (1.83%), Besan (1.71%), Gur (1.34%), Spices (1.30%), Honey (1.25%), Sweat Meat (1.22%), Eggs (1.03%), Cereals (0.95%) and Meat (0.84%).

**Decreased:** Betel Leaves & Nuts (16.52%), Wheat (3.30%), Onion (2.57%), Wheat Flour (1.89%), Pulse Mash (1.65%), Pulse Gram (1.32%), Gram Whole (1.11%), Pulse Moong (0.42%), Wheat Product (0.31%) and Sugar (0.13%).

**Non-food Items Increased:** Water Supply (6.76%), Motor Fuel (1.54%), Kerosene (1.49%), Transport Services (0.79%), Sewing Needle & Dr. Cell (0.74%), Construction Wage Rates (0.67%), Construction Input Items (0.64%), Household Equipment (0.63%), Utensils (0.47%), Cosmetics (0.45%), Household Textiles (0.44%), Personal Care (0.43%), Stationary (0.41%) and Drugs & Medicines (0.35%).

**Decreased:** Firewood Whole (1.13%) and Personal Equipments (0.37%).

**Year-on-Year:** Top few commodities which varied from previous year i.e. May 2017 are given below:-

**Food Items Increased:** Betel Leaves & Nuts (218.64%), Chicken (21.04%), Meat (9.67%), Rice (9.35%), Dry Fruits (8.71%), Sweat Meat (8.22%), Eggs (6.55%), Jam Tomato ketchup & Pickles (5.83%), Condiments (5.63%), Readymade Food (5.58%), Fish (5.18%), Milk Products (5.15%), Honey (4.46%), Tea (4.39%), Beans (4.30%) and Spices (4.25%).

**Decreased:** Pulse Mash (25.44%), Potatoes (24.59%), Cigarettes (20.25%), Pulse Gram (13.25%), Pulse Masoor (12.78%), Pulse Moong (11.47%), Sugar (10.06%), Besan (9.82%), Tomatoes (9.82%), Gur (5.88%), Gram Whole (5.06%) and Fresh Vegetables (3.41%).

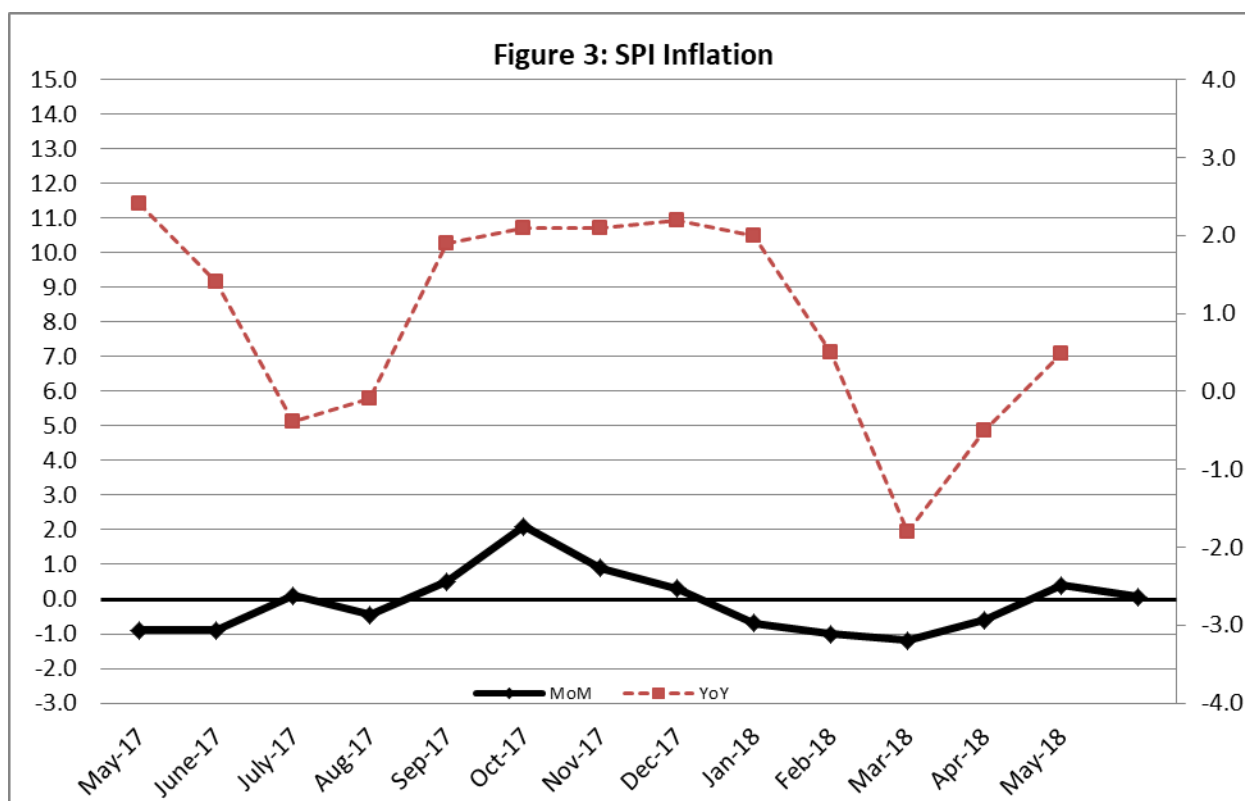
**Non-food Items Increased:** Kerosene Oil (33.21%), Education (13.10%), Motor Fuel (12.42%), Newspapers (12.12%), Water Supply (10.21%), Construction Wage Rates (10.14%), Personal Equipments (9.75%), Postal Services (9.18%), Tailoring (9.13%), Cosmetics (9.05%), Medical Tests (8.74%), Stationary (8.50%), Furniture (8.25%), Construction Input Items (8.12%) and Cleaning & Laundry (7.86%).

### III. Sensitive Price Indicator

Quintile-wise percentage changes YoY and MoM are given below in Table 3. The series from May 2017 to May 2018 is also graphed below in Figure 3.

Table 3: Sensitive Price Indicator (Base 2007-08)					
Quintiles	Indices			% Change May 2018 over	
	May 2018	April 2018	May 2017	April 2018	May 2017
1	210.44	210.31	209.42	0.06	0.49
2	219.61	219.00	217.49	0.28	0.97
3	221.97	220.99	219.03	0.44	1.34
4	227.71	226.29	224.41	0.63	1.47
5	227.58	225.59	222.49	0.88	2.29
Combined	224.51	223.13	220.51	0.62	1.81

Table 3.1 : Weekly Percentage Change of SPI During May-18				
Quintiles	% Change with Previous week			
	3 <sup>rd</sup> May-2018	10 <sup>th</sup> May-2018	17 <sup>th</sup> May-2017	24 <sup>th</sup> May-2018
Quantile 1	0.06	0.17	0.83	-2.05
Combined	0.23	0.31	0.93	-1.47



## IV. Wholesale Price Index

The Wholesale Price Index for May, 2018 increased by 1.28% over April, 2018. It increased by 5.58% over the corresponding month of the last year. YoY and MoM movements, from May, 2017 to May, 2018 are also graphed below in Figure 4.

**Table 4 : Wholesale Price Index by Group of Commodities (Base 2007-08)**

No.	Group	Group Weight (%)	Indices			% Change May, 2018 over		Impact (in %age points) May, 2018 over	
			May. 2018	Apr. 2018	May. 2017	Apr. 2018	May. 2017	Apr. 2018	May. 2017
	<b>General</b>	<b>100.00</b>	<b>230.98</b>	<b>228.07</b>	<b>218.78</b>	<b>1.28</b>	<b>5.58</b>	<b>1.28</b>	<b>5.58</b>
1.	Agriculture, Forestry & Fishery Products	25.77	263.65	260.48	252.57	1.22	4.39	0.36	1.30
2.	Ores & Minerals, Electricity, Gas & Water	12.04	242.99	242.84	241.85	0.06	0.47	0.01	0.06
3.	Food Products, Beverages & Tobacco, Textiles, Apparel & Leather Products	31.11	235.86	233.13	227.51	1.17	3.67	0.37	1.19
	i. Food Products, Bev. & Tobacco	20.07	241.92	240.00	238.64	0.80	1.37	0.17	0.30
	ii. Textiles and Apparel	10.33	226.48	222.05	207.80	2.00	8.99	0.20	0.88
	iii. Leather Products	0.71	200.77	199.90	199.75	0.44	0.51	0.00	0.00
4.	Other Transportable Goods except Metal Products, Machinery & Equipment	22.37	198.63	193.68	171.76	2.56	15.64	0.49	2.75
5.	Metal Products, Machinery & Equipment	8.72	183.47	182.01	176.43	0.80	3.99	0.06	0.28

Main contributors to month-on-month and year-on-year percentage changes are given below and detail is given in Annexure B.

1. **Month-on-month** Top few commodities which varied from previous month i.e. April, 2018 are given below:-

**Increased:** Potatoes (21.60%), Fresh Fruits (16.24%), Furnace Oil (12.39%), Jowar (11.89%), Poultry (8.17%), Cotton Seeds (6.88%), Bajra (6.75%), Maize (4.55%), Kerosene Oil (4.47%), Towels (4.17%), Diesel (3.85%), Steel Bar & Sheets (3.33%), Cotton Yarn (3.06%), Eggs (2.97%), Rice (2.78%), Cotton Fabrics (2.69%), Meat (2.52%), Footwears (2.40%), Other Oil Seeds (2.25%), Petrol (1.98%), Fridge, Washing Machine, ets (1.91%), Air Conditioners (1.85%), Oil Cakes (1.82%), Dairy Products (1.80%), Dried Fruits & Nuts (1.53%), Blended Yarn (1.46%), Fertilizers (1.28%), Stimulant & Spice Crops (1.27%), Salt & Pure Sodium Chloride (1.26%), Other Cereal Flour (1.22%) and Vegetable Oil (1.00%).

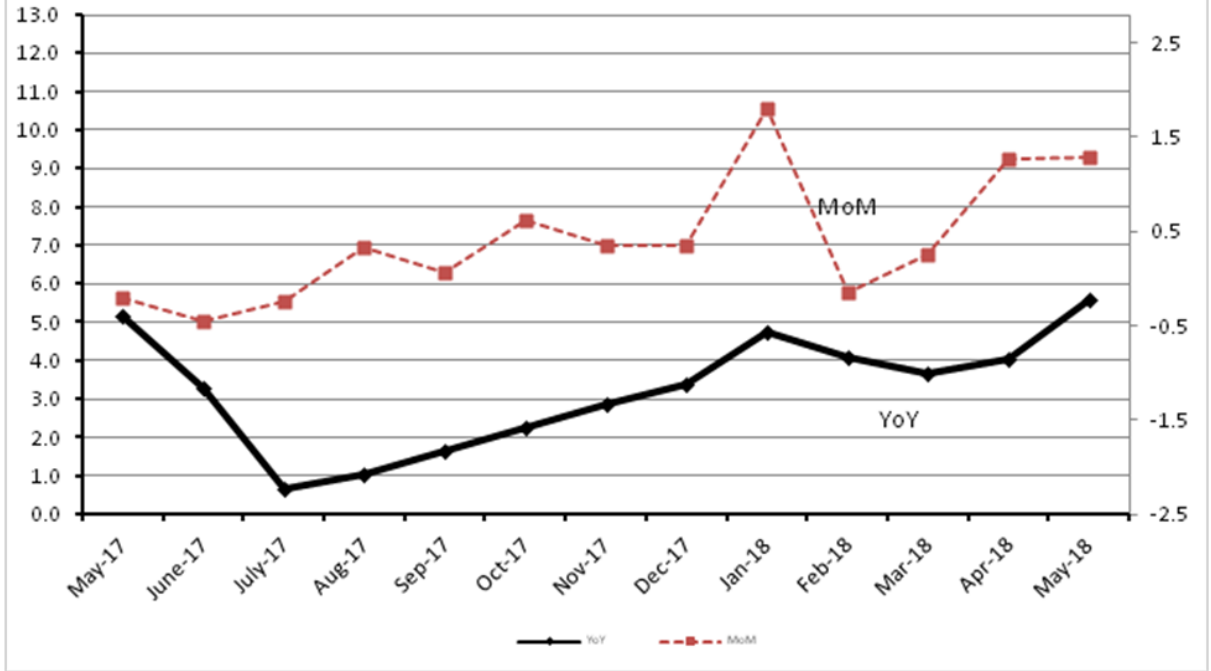
**Decreased:** Fish (5.37%), Wheat (4.63%), Hides & Fur Skins (4.48%), Vegetables (2.88%), Wheat Flour (1.44%) and Fibre Crops (1.26%).

2. **Year-on-year** Top few commodities which varied from previous year i.e. May, 2017 are given below:-

**Increased:** Kerosene Oil (81.78%), Furnace Oil (48.39%), Jowar (38.40%), Stimulant & Spice Crops (35.57%), Diesel (34.66%), Bajra (31.71%), Poultry (21.55%), Steel Bar & Sheets (21.31%), Dry Fruits (19.92%), Petrol (18.53%), Hard Board (17.93%), Cotton Yarn (16.19%), Footwear (15.52%), Maize (13.70%), Meat (12.69%), Fresh Fruits (12.22%), Chemicals (10.77%), Dried Fruits & Nuts (10.31%), Motor Vehicles (10.25%), Processed Liquid Milk (9.51%), Fibre Crops (9.45%) and Dairy Products (9.24%).

**Decreased:** Potatoes (30.49%), Tobacco Products (28.59%), Other Cereal Flour (14.53%), Hides & Fur Skins (11.45%) and Pulses (11.14%).

Figure 4: WPI Inflation





**Annexure A:CPI by Commodity Groups and Commodities (2007-08=100)**

Item and Specification	Weight	Index Numbers			% Change in May 2018 over			
		May 2018	Apr 2018	May	Apr 2018	May 2017		
<b><i>General</i></b>	<b>100.0000</b>	<b>225.40</b>	<b>224.25</b>	<b>216.33</b>	<b>+</b>	<b>0.51</b>	<b>+</b>	<b>4.19</b>
<b><i>Food and non-alcoholic Beverages</i></b>	<b>34.8343</b>	<b>234.40</b>	<b>231.90</b>	<b>229.65</b>	<b>+</b>	<b>1.08</b>	<b>+</b>	<b>2.07</b>
1 Wheat	0.3477	192.37	198.93	192.57	-	3.30	-	0.10
2 Wheat Flour	4.1648	206.09	210.07	208.05	-	1.89	-	0.94
3 Wheat Product	0.0959	212.42	213.09	216.02	-	0.31	-	1.67
4 Besan	0.1500	268.40	263.89	297.62	+	1.71	-	9.82
5 Rice	1.5821	194.33	193.68	177.72	+	0.34	+	9.35
6 Cereals	0.1563	264.30	261.81	255.14	+	0.95	+	3.59
7 Bakery & Confectionary	1.1550	225.94	225.07	217.90	+	0.39	+	3.69
8 Nimco	0.4574	259.43	258.88	254.27	+	0.21	+	2.03
9 Meat	2.4303	301.28	298.76	274.72	+	0.84	+	9.67
10 Chicken	1.3596	232.54	216.82	192.12	+	7.25	+	21.04
11 Fish	0.2970	228.10	227.59	216.86	+	0.22	+	5.18
12 Milk Fresh	6.6800	283.40	281.77	273.61	+	0.58	+	3.58
13 Milk Products	0.6338	275.28	274.91	261.79	+	0.13	+	5.15
14 Milk Powder	0.1129	243.79	241.94	234.48	+	0.76	+	3.97
15 Eggs	0.4555	189.94	188.00	178.26	+	1.03	+	6.55
16 Mustard Oil	0.0952	164.68	164.66	159.76	+	0.01	+	3.08
17 Cooking Oil	1.7538	140.71	140.48	137.86	+	0.16	+	2.07
18 Vegetable Ghee	2.0714	145.16	144.61	142.61	+	0.38	+	1.79
19 Dry Fruits	0.2543	289.34	284.15	266.15	+	1.83	+	8.71
20 Fresh Fruits	1.8649	298.56	281.64	303.71	+	6.01	-	1.70
21 Pulse Masoor	0.2712	158.06	158.21	181.21	-	0.09	-	12.78
22 Pulse Moong	0.2336	217.50	218.42	245.68	-	0.42	-	11.47
23 Pulse Mash (Washed)	0.2098	211.12	214.66	283.17	-	1.65	-	25.44
24 Pulse Gram	0.2361	255.84	259.25	294.91	-	1.32	-	13.25
25 Gram Whole	0.1616	274.09	277.17	288.70	-	1.11	-	5.06
26 Beans	0.0269	244.28	244.53	234.22	-	0.10	+	4.30
27 Potatoes	0.4598	174.73	148.56	231.71	+	17.6	-	24.59
28 Onion	0.5239	177.74	182.43	178.05	-	2.57	-	0.17
29 Tomatoes	0.4318	108.95	105.70	120.81	+	3.07	-	9.82
30 Fresh Vegetables	1.7105	239.66	233.55	248.13	+	2.62	-	3.41
31 Sugar	1.0445	190.33	190.58	211.63	-	0.13	-	10.06
32 Gur	0.0220	243.56	240.34	258.77	+	1.34	-	5.88
33 Honey	0.0446	346.18	341.92	331.39	+	1.25	+	4.46
34 SweetMeat	0.2483	270.67	267.41	250.10	+	1.22	+	8.22
35 Beverages	1.1990	231.59	230.60	224.56	+	0.43	+	3.13
36 Jam, Tomato Ketchup & Pickles	0.2454	230.45	228.80	217.79	+	0.72	+	5.81
37 Condiments	0.2656	284.34	283.14	269.19	+	0.42	+	5.63
38 Spices	0.5441	246.93	243.77	236.86	+	1.30	+	4.25
39 Tea	0.8377	302.62	300.65	289.90	+	0.66	+	4.39
<b><i>Alcoholic Beverages, Tobacco</i></b>	<b>1.4135</b>	<b>315.26</b>	<b>317.70</b>	<b>383.32</b>	<b>-</b>	<b>0.77</b>	<b>-</b>	<b>17.76</b>
40 Cigarettes	1.3906	307.50	307.42	385.57	+	0.03	-	20.25
41 Betel Leaves & Nuts	0.0229	786.31	941.86	246.77	-	16.5	+	218.64
<b><i>Clothing and footwear</i></b>	<b>7.5708</b>	<b>252.58</b>	<b>252.06</b>	<b>236.71</b>	<b>+</b>	<b>0.21</b>	<b>+</b>	<b>6.70</b>
42 Cotton Cloth	1.7286	244.99	243.75	230.16	+	0.51	+	6.44
43 Woolen Cloth	0.8759	268.37	268.30	256.11	+	0.03	+	4.79
44 Readymade Garments	0.9739	262.95	262.52	244.95	+	0.16	+	7.35
45 Woolen Readymade Garments	0.3964	266.50	266.50	258.38	+	0.00	+	3.14
46 Hosiery	0.5094	265.27	264.90	246.87	+	0.14	+	7.45

**Annexure A:CPI by Commodity Groups and Commodities (2007-08=100)**

Item and Specification	Weight	Index Numbers			% Change in May 2018 over		
		May 2018	Apr 2018	May	Apr 2018	May 2017	
47 Dopatta	0.4412	261.94	261.67	244.48	+	0.10	+ 7.14
48 Cleaning and Laundry	0.2110	290.46	290.46	269.30	+	0.00	+ 7.86
49 Tailoring	0.8840	344.90	343.91	316.04	+	0.29	+ 9.13
50 Footwear	1.5504	177.43	177.36	167.13	+	0.04	+ 6.16
<b><u>Housing, water, Elec., Gas and other</u></b>	<b>29.4149</b>	<b>207.58</b>	<b>207.35</b>	<b>196.70</b>	+	<b>0.11</b>	+ <b>5.53</b>
51 House Rent	21.8149	201.96	201.96	188.68	+	0.00	+ 7.04
52 Construction Input Items	0.5623	270.82	269.11	250.49	+	0.64	+ 8.12
53 Construction Wage Rates	0.3331	264.70	262.93	240.32	+	0.67	+ 10.14
54 Water Supply	0.4971	189.09	177.11	171.58	+	6.76	+ 10.21
55 Electricity	4.3985	238.10	238.10	238.10	+	0.00	+ 0.00
56 Gas	1.5756	158.08	158.08	158.08	+	0.00	+ 0.00
57 Kerosene Oil	0.0057	264.32	260.44	198.42	+	1.49	+ 33.21
58 Firewood Whole	0.2277	297.93	301.32	290.23	-	1.13	+ 2.65
<b><u>Furnishing and household</u></b>	<b>4.2082</b>	<b>239.94</b>	<b>239.29</b>	<b>226.42</b>	+	<b>0.27</b>	+ <b>5.97</b>
59 Furniture	0.3315	235.84	235.27	217.87	+	0.24	+ 8.25
60 Household Textiles	0.6489	243.30	242.24	227.19	+	0.44	+ 7.09
61 Household Equipment	0.5936	189.68	188.50	182.03	+	0.63	+ 4.20
62 Utensils	0.3212	249.89	248.73	231.84	+	0.47	+ 7.79
63 Plastic Products	0.2547	225.28	224.20	210.84	+	0.48	+ 6.85
64 Washing Soaps & Detergents	0.7893	239.22	238.88	231.44	+	0.14	+ 3.36
65 Sewing Needle & Dr Cell	0.1496	219.11	217.51	206.48	+	0.74	+ 6.12
66 Household Servant	1.0432	270.32	270.32	253.47	+	0.00	+ 6.65
67 Marriage Hall Charges	0.0762	260.28	260.28	248.67	+	0.00	+ 4.67
<b><u>Health</u></b>	<b>2.1868</b>	<b>223.74</b>	<b>223.08</b>	<b>212.65</b>	+	<b>0.30</b>	+ <b>5.22</b>
68 Drugs & Medicines	1.2667	189.28	188.62	184.67	+	0.35	+ 2.50
69 Medical Equipments	0.0080	259.89	259.89	251.21	+	0.00	+ 3.46
70 Doctor (MBBS) Clinic Fee	0.5904	302.67	301.80	280.95	+	0.29	+ 7.73
71 Medical Tests	0.3217	213.70	213.34	196.52	+	0.17	+ 8.74
<b><u>Transport</u></b>	<b>7.2023</b>	<b>189.16</b>	<b>187.48</b>	<b>176.43</b>	+	<b>0.90</b>	+ <b>7.22</b>
72 Motor Vehicles	0.6630	187.54	187.45	175.12	+	0.05	+ 7.09
73 Motor Vehicle Accessories	0.2439	216.95	216.78	211.92	+	0.08	+ 2.37
74 Motor Fuel	3.0269	167.71	165.17	149.18	+	1.54	+ 12.42
75 Mechanical Service	0.4552	242.09	241.91	230.37	+	0.07	+ 5.09
76 Motor Vehicle Tax	0.1099	210.18	210.18	210.18	+	0.00	+ 0.00
77 Transport Services	2.7034	201.31	199.74	193.59	+	0.79	+ 3.99
<b><u>Communication</u></b>	<b>3.2198</b>	<b>133.67</b>	<b>133.67</b>	<b>132.87</b>	+	<b>0.00</b>	+ <b>0.60</b>
78 Postal Services	0.0662	272.18	272.18	249.29	+	0.00	+ 9.18
79 Communication & Apparatus	3.1536	130.77	130.77	130.42	+	0.00	+ 0.27
<b><u>Recreation and culture</u></b>	<b>2.0227</b>	<b>208.32</b>	<b>207.96</b>	<b>196.12</b>	+	<b>0.17</b>	+ <b>6.22</b>
80 Recreation & Culture	0.8634	134.12	134.05	129.73	+	0.05	+ 3.38
81 Text Books	0.5706	304.43	303.91	287.98	+	0.17	+ 5.71
82 Newspapers	0.1934	202.94	202.94	181.01	+	0.00	+ 12.12
83 Stationery	0.3953	234.29	233.34	215.94	+	0.41	+ 8.50
<b><u>Education</u></b>	<b>3.9431</b>	<b>281.88</b>	<b>281.57</b>	<b>249.23</b>	+	<b>0.11</b>	+ <b>13.10</b>
84 Education	3.9431	281.88	281.57	249.23	+	0.11	+ 13.10
<b><u>Restaurants and hotels</u></b>	<b>1.2286</b>	<b>292.77</b>	<b>291.05</b>	<b>277.29</b>	+	<b>0.59</b>	+ <b>5.58</b>
85 Readymade Food	1.2286	292.77	291.05	277.29	+	0.59	+ 5.58
<b><u>Misc. goods and services</u></b>	<b>2.7550</b>	<b>263.91</b>	<b>263.59</b>	<b>245.99</b>	+	<b>0.12</b>	+ <b>7.28</b>
86 Personal Care	1.4935	238.37	237.36	226.79	+	0.43	+ 5.11
87 Cosmetics	0.3853	223.29	222.28	204.76	+	0.45	+ 9.05
88 Blades	0.0322	204.05	203.39	197.80	+	0.32	+ 3.16
89 Personal Equipments	0.8440	329.93	331.15	300.63	-	0.37	+ 9.75

## Annexure B: Wholesale Price Indices by Major Groups &amp; Commodities

(2007-08=100)

Item and Specification	Weight	Index Numbers			% Change in May 2018 over			
		May 18	Apr 18	May 17	Apr 2018	May 2017		
<b>General</b>	<b>100.0000</b>	<b>230.98</b>	<b>228.07</b>	<b>218.78</b>	<b>+</b>	<b>1.28</b>	<b>+</b>	<b>5.58</b>
<b>Agriculture Forestry &amp; Fisher</b>	<b>25.7674</b>	<b>263.65</b>	<b>260.48</b>	<b>252.57</b>	<b>+</b>	<b>1.22</b>	<b>+</b>	<b>4.39</b>
001 Wheat	0.6297	193.89	203.30	199.84	-	4.63	-	2.98
002 Maize	0.6764	220.29	210.71	193.75	+	4.55	+	13.70
003 Rice	2.4413	178.91	174.07	164.78	+	2.78	+	8.58
004 Sorghum / Jowar	0.0214	292.47	261.38	211.32	+	11.89	+	38.40
005 Millet / Bajra	0.0374	210.95	197.62	160.16	+	6.75	+	31.71
006 Vegetables	1.2441	230.36	237.20	244.61	-	2.88	-	5.83
007 Fresh Fruits	1.5144	358.47	308.39	319.44	+	16.24	+	12.22
008 Dry Fruits	0.2478	283.68	275.26	236.56	+	3.06	+	19.92
009 Cotton Seeds	1.1511	273.24	255.66	277.04	+	6.88	-	1.37
010 Other Oil Seeds	0.0722	186.14	182.04	181.57	+	2.25	+	2.52
011 Edible Roots / Potatoes	0.2540	161.85	133.10	232.84	+	21.60	-	30.49
012 Stimulant & Spice Crops	0.1634	282.74	279.19	208.56	+	1.27	+	35.57
013 Pulses	0.4901	239.75	239.71	269.80	+	0.02	-	11.14
014 Sugar Crops	1.0725	257.62	257.62	268.94	+	0.00	-	4.21
015 Fibre Crops	5.3169	239.28	242.34	218.63	-	1.26	+	9.45
016 Unmanufactured Tobacco	0.0742	309.16	308.03	290.42	+	0.37	+	6.45
017 Poultry	0.5633	249.20	230.37	205.02	+	8.17	+	21.55
018 Raw Milk from Bovine Animals	7.0279	283.49	280.72	268.56	+	0.99	+	5.56
019 Eggs	0.5034	194.33	188.73	178.14	+	2.97	+	9.09
020 Raw Animal Materials / Wool	0.0351	176.72	176.13	176.86	+	0.33	-	0.08
021 Hides & Fur Skins, Raw	0.4834	94.24	98.66	106.42	-	4.48	-	11.45
022 Fuel Wood in Logs	0.0179	283.56	283.56	279.63	+	0.00	+	1.41
023 Fish Live Fresh or Chilled	1.7295	451.10	476.70	466.43	-	5.37	-	3.29
<b>Ores/Minerals, Elec., Gas &amp; W</b>	<b>12.0389</b>	<b>242.99</b>	<b>242.84</b>	<b>241.85</b>	<b>+</b>	<b>0.06</b>	<b>+</b>	<b>0.47</b>
024 Coal not Agglomerated	0.7508	155.29	155.29	155.29	+	0.00	+	0.00
025 Natural Gas Liquefied	5.7385	211.12	210.84	208.89	+	0.13	+	1.07
026 Salt & Pure Sodium Chloride	0.0584	269.74	266.38	254.38	+	1.26	+	6.04
027 Electrical Energy	5.4912	288.00	288.00	288.00	+	0.00	+	0.00
<b>Food, Beverages, Tobacco, Textil</b>	<b>31.1122</b>	<b>235.86</b>	<b>233.13</b>	<b>227.51</b>	<b>+</b>	<b>1.17</b>	<b>+</b>	<b>3.67</b>
<b>Food Products, Beverages &amp;</b>	<b>20.0718</b>	<b>241.92</b>	<b>240.00</b>	<b>238.64</b>	<b>+</b>	<b>0.80</b>	<b>+</b>	<b>1.37</b>
028 Meat of Animals	3.4559	325.47	317.46	288.83	+	2.52	+	12.69
029 Vegetables & Fruit Juice	0.0058	226.66	226.66	223.21	+	0.00	+	1.55
030 Dried Fruits & Nuts	0.1733	295.32	290.88	267.71	+	1.53	+	10.31
031 Fruit Juices	0.3880	185.23	184.96	181.68	+	0.15	+	1.95
032 Vegetable Oils Refined	1.9242	158.97	157.40	154.94	+	1.00	+	2.60
033 Vegetable Ghee	1.5632	129.83	128.77	126.11	+	0.82	+	2.95
034 Oil Cakes	0.9611	232.12	227.97	227.54	+	1.82	+	2.01
035 Processed Liquid Milk	4.4437	289.45	288.23	264.31	+	0.42	+	9.51
036 Milk & Cream in Solid Form	0.0316	223.82	223.34	218.36	+	0.21	+	2.50
037 Ice Cream	0.0047	266.02	266.02	261.28	+	0.00	+	1.81
038 Dairy Products N.E.C	0.0117	278.71	273.79	255.13	+	1.80	+	9.24
039 Wheat Flour	2.3034	188.12	190.87	191.32	-	1.44	-	1.67
040 Other Cereal Flour	0.0604	215.85	213.24	252.55	+	1.22	-	14.53
041 Sugar Refined	1.7975	196.39	196.05	214.13	+	0.17	-	8.28
042 Chocolate	0.0139	100.00	100.00	100.00	+	0.00	+	0.00
043 Sugar Confectionary	0.0738	127.55	127.55	128.44	+	0.00	-	0.69
044 Coffee & Tea	0.7303	274.13	272.46	264.11	+	0.61	+	3.79
045 Spices	0.1449	202.25	202.24	189.72	+	0.00	+	6.60
046 Other Food Products	0.0336	294.50	294.50	294.51	+	0.00	+	0.00
047 Mineral Water	0.0207	211.50	211.50	198.57	+	0.00	+	6.51
048 Beverages	0.6303	173.22	173.00	172.03	+	0.13	+	0.69
049 Tobacco Products	1.2998	318.37	318.37	445.85	+	0.00	-	28.59
<b>Textiles &amp; Apparels</b>	<b>10.3289</b>	<b>226.48</b>	<b>222.05</b>	<b>207.80</b>	<b>+</b>	<b>2.00</b>	<b>+</b>	<b>8.99</b>
050 Cotton Yarn	5.2491	236.05	229.04	203.16	+	3.06	+	16.19
051 Nylon Yarn	0.1719	143.99	143.99	143.99	+	0.00	+	0.00
052 Blended Yarn	0.1689	195.38	192.56	182.28	+	1.46	+	7.19
053 Woven Fabrics	0.0128	321.49	321.49	316.28	+	0.00	+	1.65
054 Cotton Fabrics	0.6343	219.99	214.23	211.60	+	2.69	+	3.97
055 Other Fabrics	1.1016	227.85	227.16	227.16	+	0.30	+	0.30
056 Silk & Reyon Fabrics	0.7350	188.95	188.14	188.89	+	0.43	+	0.03
057 Towels	0.1235	287.65	276.14	276.14	+	4.17	+	4.17
058 Blankets	0.0029	265.03	265.03	247.52	+	0.00	+	7.07
059 Bed Sheets	0.0913	256.87	256.87	256.87	+	0.00	+	0.00

## Annexure B: Wholesale Price Indices by Major Groups &amp; Commodities

(2007-08=100)

Item and Specification	Weight	Index Numbers			% Change in May 2018 over	
		May 18	Apr 18	May 17	Apr 2018	May 2017
060 Quilts	0.0019	222.32	222.32	203.79	+ 0.00	+ 9.09
061 Woolen Carpets	0.0383	196.43	196.43	196.43	+ 0.00	+ 0.00
062 Synthetic Carpets	0.0566	130.95	130.95	130.95	+ 0.00	+ 0.00
063 Hosiery Products	0.8832	250.36	248.01	243.31	+ 0.95	+ 2.90
064 Readymade Garments	1.0576	201.16	201.16	197.19	+ 0.00	+ 2.01
<b>Leather Products</b>	<b>0.7115</b>	<b>200.77</b>	<b>199.90</b>	<b>199.75</b>	<b>+ 0.44</b>	<b>+ 0.51</b>
065 Leather Without Hair	0.2973	212.68	212.68	221.97	+ 0.00	- 4.19
066 Other Leather N.E.C	0.2567	207.02	207.02	207.31	+ 0.00	- 0.14
067 Footwears	0.1575	168.09	164.15	145.51	+ 2.40	+ 15.52
<b>Other Transportable Goods</b>	<b>22.3659</b>	<b>198.63</b>	<b>193.68</b>	<b>171.76</b>	<b>+ 2.56</b>	<b>+ 15.64</b>
068 Timber	0.0165	237.00	237.00	231.53	+ 0.00	+ 2.36
069 Printing Paper	0.4279	170.68	170.48	165.63	+ 0.12	+ 3.05
070 Hard Board	0.1579	260.42	260.42	220.83	+ 0.00	+ 17.93
071 Coke	0.2797	163.45	163.45	163.45	+ 0.00	+ 0.00
072 Motor Spirit	1.5336	148.14	145.27	124.98	+ 1.98	+ 18.53
073 Diesel Oil	5.2664	211.29	203.45	156.91	+ 3.85	+ 34.66
074 Kerosine Oil	0.2151	212.90	203.79	117.12	+ 4.47	+ 81.78
075 Furnace Oil	3.2664	148.26	131.92	99.91	+ 12.39	+ 48.39
076 Mobil Oil	0.7114	201.08	201.08	201.29	+ 0.00	- 0.10
077 Chemicals	1.7720	191.65	191.56	173.01	+ 0.05	+ 10.77
078 Dyeing Material	0.1539	146.55	146.55	146.55	+ 0.00	+ 0.00
079 Fertilizers	2.8657	228.94	226.05	218.85	+ 1.28	+ 4.61
080 Pesticides	0.2763	312.26	310.16	304.43	+ 0.68	+ 2.57
081 Insecticides	0.1276	142.19	141.00	141.71	+ 0.84	+ 0.34
082 Paints & Varnishes	0.1916	301.12	301.12	294.51	+ 0.00	+ 2.24
083 Medicines	1.1428	177.04	177.04	174.00	+ 0.00	+ 1.75
084 Soaps & Detergents	0.8168	190.80	190.72	191.14	+ 0.04	- 0.18
085 Auto Tyres	0.2703	177.11	177.11	177.07	+ 0.00	+ 0.02
086 Plastic Products	0.4550	240.04	239.27	225.88	+ 0.32	+ 6.27
087 Glass sheets	0.2089	302.27	302.27	298.97	+ 0.00	+ 1.10
088 Other Glass Articles	0.1635	318.10	318.10	317.24	+ 0.00	+ 0.27
089 Ceramics & Sanitary Fixture	0.0244	236.41	236.41	233.92	+ 0.00	+ 1.06
090 Bricks, Blocks & Tiles	0.1566	221.69	223.30	220.73	- 0.72	+ 0.43
091 Cement	1.8145	223.54	223.43	214.78	+ 0.05	+ 4.08
092 Bed Foam	0.0006	175.33	175.33	170.00	+ 0.00	+ 3.14
093 Matches	0.0505	171.36	171.36	171.36	+ 0.00	+ 0.00
<b>Metal Product, Machinery &amp; Eq</b>	<b>8.7156</b>	<b>183.47</b>	<b>182.01</b>	<b>176.43</b>	<b>+ 0.80</b>	<b>+ 3.99</b>
094 Pig Iron	0.0593	128.97	128.97	128.97	+ 0.00	+ 0.00
095 Steel Bar & Sheets	1.4022	163.92	158.63	135.13	+ 3.33	+ 21.31
096 Pipe Fittings	0.0780	215.66	215.66	215.66	+ 0.00	+ 0.00
097 Steel Products	0.3879	177.24	176.76	177.56	+ 0.27	- 0.18
098 Engines & Motors	0.0046	116.98	116.98	116.98	+ 0.00	+ 0.00
099 Vacuum Pumps	0.0155	123.69	123.69	123.69	+ 0.00	+ 0.00
100 Air Conditioners	0.0049	203.80	200.10	200.10	+ 1.85	+ 1.85
101 Cultivators	0.0551	190.66	190.66	190.66	+ 0.00	+ 0.00
102 Chuff Cutter	0.1293	153.46	153.46	153.46	+ 0.00	+ 0.00
103 Tractors	0.0028	201.75	201.75	201.75	+ 0.00	+ 0.00
104 Lathe Machines	0.0525	241.06	241.06	241.06	+ 0.00	+ 0.00
105 Concrete Mixture	0.0107	138.83	138.83	138.83	+ 0.00	+ 0.00
106 Fridge,WashM,SewM,Fans,Iron	1.1645	226.35	222.10	214.75	+ 1.91	+ 5.40
107 Electric Wires	0.0912	208.22	208.22	204.51	+ 0.00	+ 1.81
108 Lighting Equipments	1.4431	174.04	174.04	170.73	+ 0.00	+ 1.94
109 Radio & Television	0.1843	140.42	140.42	140.42	+ 0.00	+ 0.00
110 Motor Vehicles	0.0244	211.00	211.00	191.39	+ 0.00	+ 10.25
111 Motorcycles	0.2570	133.88	133.32	125.89	+ 0.42	+ 6.35
112 Bicycles	3.3483	187.65	187.65	187.65	+ 0.00	+ 0.00