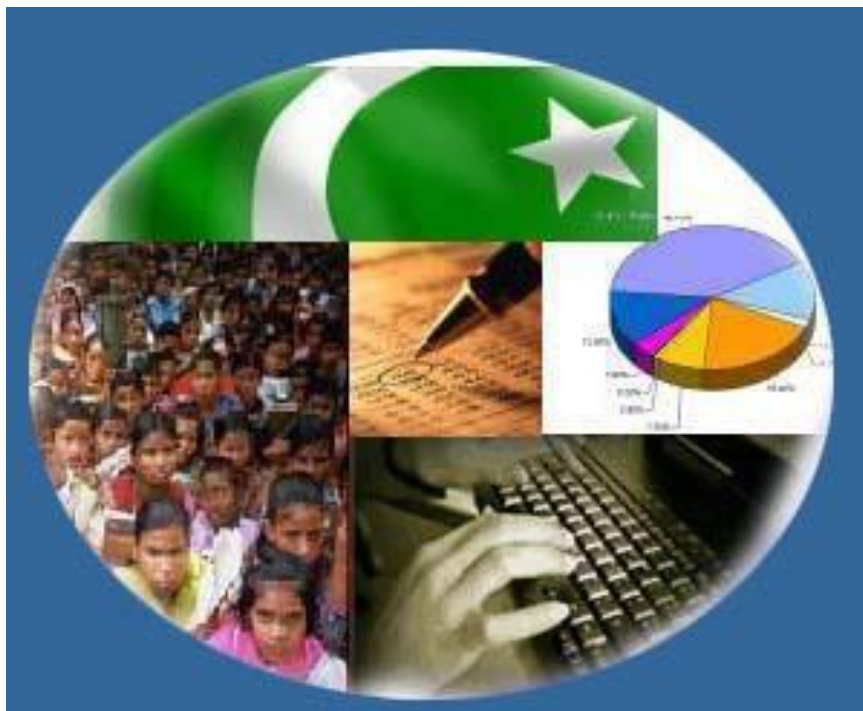




# Monthly Review on Price Indices



**March, 2018**  
**(Base 2007-08)**

**Government of Pakistan**  
**Ministry Of Statistics**  
**Pakistan Bureau of Statistics**  
**Islamabad**



## Inflation in Brief

1. CPI inflation General increased by 3.2% on year-on-year basis in March 2018 as compared to an increase of 3.8% in the previous month and 4.9% in March 2017. On month-on-month basis, it increased by 0.3% in March 2018 as compared to a decrease of 0.3% in the previous month and increase of 0.8% in March 2017.
2. Core inflation measured by non-food non-energy CPI (Core NFNE) increased by 5.8% on (YoY) basis in March 2018 as compared to an increase of 5.2% in the previous month and 5.3% in March 2017. On (MoM) basis, it increased by 0.7% in March 2018 as compared to increase of 0.2% in previous month, and an increase of 0.1% in corresponding month of last year i.e. March 2017.
3. Core inflation, measured by 20% weighted trimmed mean CPI (Core Trimmed) increased by 4.1% on (YoY) basis in March 2018 as compared to 4.3% in the previous month and by 4.5% in March 2017. On (MoM) basis, it increased by 0.2% in March 2018 as compared to an increase of 0.1% in the previous month and an increase of 0.2% in corresponding month of last year i.e. March 2017.
4. SPI inflation on YoY decreased by 1.8% in March 2018 as compared to an increase of 0.5% a month earlier and an increase of 3.1% in March 2017. On MoM basis, it decreased by 0.6% in March 2018 as compared to a decrease of 1.2% a month earlier and an increase of 1.8% in March 2017.
5. WPI inflation on YoY basis increased by 3.6% in March 2018 as compared to an increase of 4.1% a month earlier and an increase of 6.4% in March 2017. WPI inflation on MoM basis increased by 0.2% in March 2018 as compared to a decrease of 0.1% a month earlier and an increase of 0.7% in corresponding month of last year i.e. March 2017.
6. Figures 1 and 2 show graphically the data of Table 1. Table 1.1 shows "Period Average" and "YoY" percent changes in indices of three years.

**Table 1: Inflation (%) (Base 2007-08)**

Period	CPI						Core Inflation				SPI**		WPI	
	General		Food		Non-food		NFNE*		Trimmed		YoY	MoM	YoY	MoM
	YoY	MoM	YoY	MoM	YoY	MoM	YoY	MoM	YoY	MoM				
Feb-17	4.2	0.3	3.7	0.3	4.6	0.3	5.3	0.2	4.1	0.2	1.1	0.2	5.3	0.5
Mar-17	4.9	0.8	5.0	1.9	4.9	0.1	5.3	0.1	4.5	0.2	3.1	1.8	6.4	0.7
Apr-17	4.8	1.4	4.4	1.7	5.1	1.2	5.5	1.3	4.8	0.8	2.3	-0.9	6.0	0.9
May-17	5.0	0.0	4.9	-0.2	5.1	0.2	5.5	0.2	4.8	0.2	2.4	-0.9	5.2	-0.2
Jun-17	3.9	-0.4	2.4	-1.1	5.0	0.1	5.5	0.1	4.2	0.0	1.4	0.1	3.3	-0.5
Jul-17	2.9	0.3	-0.1	0.0	5.1	0.5	5.6	0.7	4.0	0.4	-0.4	-0.5	0.7	-0.2
Aug-17	3.4	0.2	1.3	0.4	5.0	0.1	5.5	0.1	4.2	0.1	-0.1	0.5	1.0	0.3
Sep-17	3.9	0.6	2.4	1.3	4.9	0.2	5.4	0.1	4.10	0.1	1.9	2.1	1.6	0.1
Oct-17	3.8	0.7	2.2	0.6	4.9	0.8	5.3	0.9	4.0	0.6	2.1	0.9	2.3	0.6
Nov-17	4.0	0.4	2.4	0.4	5.1	0.4	5.5	0.3	4.2	0.3	2.1	0.3	2.9	0.4
Dec-17	4.6	-0.1	3.8	-0.6	5.1	0.2	5.5	0.2	4.7	0.2	2.2	-0.7	3.4	0.4
Jan-18	4.4	0.0	3.7	-1.0	4.9	0.8	5.2	0.8	4.6	0.6	2.0	-1.0	4.7	1.8
Feb-18	3.8	-0.3	2.2	-1.1	4.9	0.2	5.2	0.2	4.3	0.1	0.5	-1.2	4.1	-0.1
Mar-18	3.2	0.3	0.1	-0.3	5.4	0.7	5.8	0.7	4.1	0.2	-1.8	-0.6	3.6	0.2

\*NFNE is non-food non-energy, \*\* SPI for quintile 1. Digits 0.0\* are due to rounding off.

**Table 1.1 : Period Average and YoY % Changes of Indices (Base 2007-08)**

Index	Averages July-March % Changes			March over March % Changes		
	2017-18	2016-17	2015-16	2018	2017	2016
CPI	3.78	4.01	2.64	3.25	4.94	3.94
SPI	0.96	1.42	1.27	-1.82	3.12	3.45
WPI	2.70	3.79	-1.50	3.65	6.40	0.16

Figure 2: CPI Inflation MoM, Special Indices

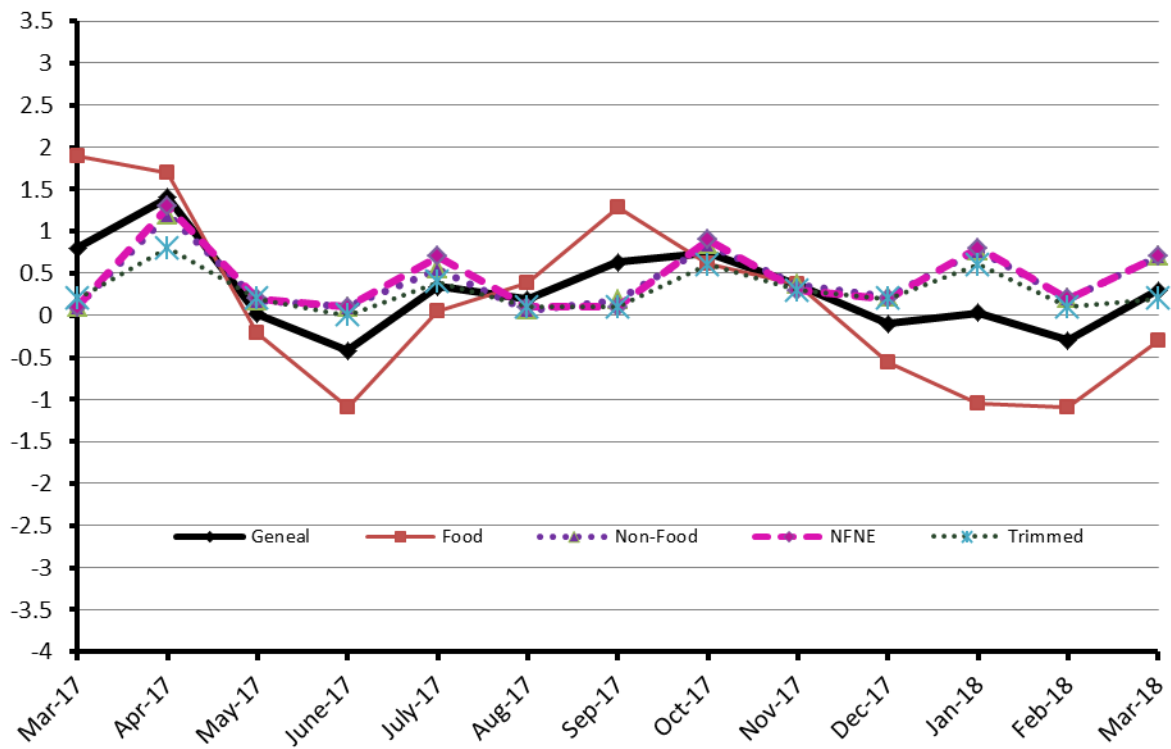
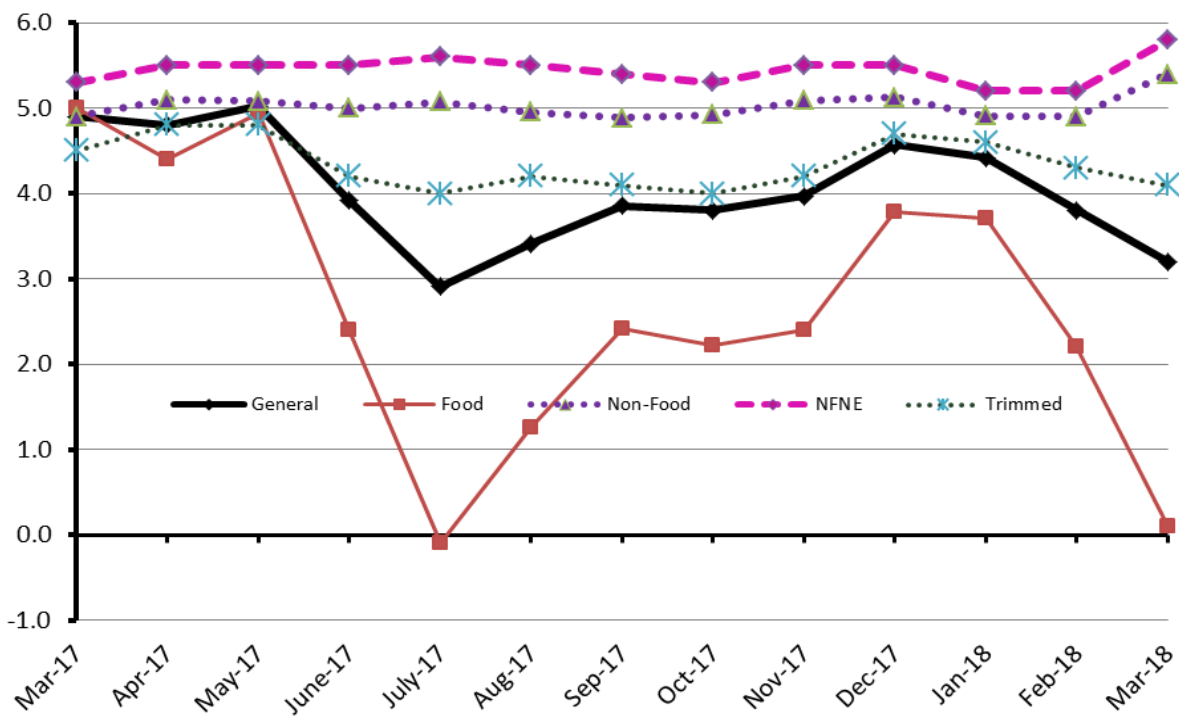


Figure 1: CPI Inflation YoY, Special Indices



## II. Consumer Price Index (CPI)

The Consumer Price Index of March 2018, is increased by 0.31% over February 2018 and increased by 3.25% over corresponding month of the last year i.e. March 2017.

**Table 2 : Consumer Price Index by Group of Commodities and Services (Base 2007-08)**

No	Group	Group Weight (%)	Indices			% Change March 2018 Over		Impact (In % points) March 2018 Over	
			Mar 2018	Feb 2018	Mar 2017	Feb 2018	Mar 2017	Feb 2018	Mar 2017
	General	<b>100.00</b>	<b>220.25</b>	<b>219.58</b>	<b>213.32</b>	<b>0.31</b>	<b>3.25</b>	<b>0.30</b>	<b>3.25</b>
1.	Food & Non-alcoholic Bev.	34.83	228.39	229.23	226.16	-0.37	0.99	-0.13	0.36
	Non-perishable Food Items	29.84	231.03	230.60	225.68	0.19	2.37	0.06	0.75
	Perishable Food Items	4.99	212.62	221.02	229.04	-3.80	-7.17	-0.19	-0.38
2.	Alcoholic Bev. & Tobacco	1.41	316.60	313.39	380.92	1.02	-16.89	0.02	-0.43
3.	Clothing & Footwear	7.57	245.80	245.03	234.46	0.31	4.84	0.03	0.40
4.	Housing, Water, Electricity, Gas & Fuels	29.41	202.71	202.62	194.44	0.04	4.25	0.01	1.14
5.	Furnishing & Household Equipment Maintenance	4.21	234.67	233.50	224.59	0.50	4.49	0.02	0.20
6.	Health	2.19	221.26	220.58	211.21	0.31	4.76	0.01	0.10
7.	Transport	7.20	186.98	184.47	175.69	1.36	6.43	0.08	0.38
8.	Communication	3.22	133.37	133.28	132.69	0.07	0.51	0.00	0.01
9.	Recreation & Culture	2.02	200.38	198.62	197.14	0.89	1.64	0.02	0.03
10.	Education	3.94	275.17	262.35	233.98	4.89	17.60	0.23	0.76
11.	Restaurants & Hotels	1.23	287.84	287.21	271.02	0.22	6.21	0.00	0.10
12.	Miscellaneous	2.76	256.35	255.21	242.19	0.45	5.85	0.01	0.18

Main contributors to month-on-month and year-on-year percentage changes are given below and detail is given in Annexure A.

**1. Month-on-month** Top few commodities which varied from previous month are given below:-

**Food Items Increased:** Betel Leaves & Nuts (22.25%), Fresh Fruits (6.65%), Chicken (4.39%), Tea (3.12%), Fish (1.07%), Meat (0.92%), Cooking Oil (0.48%), Dry Fruits (0.45%), Rice (0.44%), Condiments (0.35%), Milk Powder (0.28%), Jam & Pickles (0.27%) and Milk Products (0.21%).

**Decreased:** Tomatoes (20.06%), Onion (19.16%), Potatoes (8.53%), Fresh Vegetables (7.33%), Eggs (7.26%), Gur (2.70%), Gram Whole (2.46%), Pulse Gram (2.11%), Pulse Mash (1.80%), Besan (1.49%), Sugar (1.04%), Pulse Moong (0.91%), Pulse Masoor (0.71%), Wheat Flour (0.62%) and Wheat (0.50%).

**Non-food Items Increased:** Newspapers (8.90%), Kerosene Oil (5.42%), Education (4.89%), Motor Vehicles (3.14%), Motor Fuel (2.26%), Postal Services (1.25%), Cosmetics (0.99%), Household Servant (0.97%), Construction Input Items (0.93%), Sewing Needle & Dr Cell (0.88%), Construction Wage Rates (0.78%), Cotton Cloth (0.65%) and Doctor MBBS Fee (0.58%).

**Decreased:** Woolen Readymade Garments (0.12%).

**2. Year-on-Year:** Top few commodities which varied from previous year i.e. March 2017 are given below:-

**Food Items Increased:** Betel Leaves & Nuts (280.15%), Rice (13.29%), Eggs (9.65%), Meat (8.39%), Beans (6.81%), Readymade Food (6.21%), Dry Fruits (6.03%), Honey (5.38%), Milk Products (5.13%), Fresh Fruits (4.99%), Condiments (4.56%), Tea (4.46%), Sweet Meat (3.90%), Jam & Pickles (3.88%) and Milk Fresh (3.78%).

**Decreased:** Tomatoes (54.32%), Pulse Mash (22.08%), Cigarettes (19.98%), Sugar (14.91%), Potatoes (14.86%), Pulse Masoor (13.38%), Pulse Gram (11.86%), Pulse Moong (11.42%), Fresh Vegetables (10.32%), Besan (9.68%), Gur (8.57%) and Wheat (2.09%).

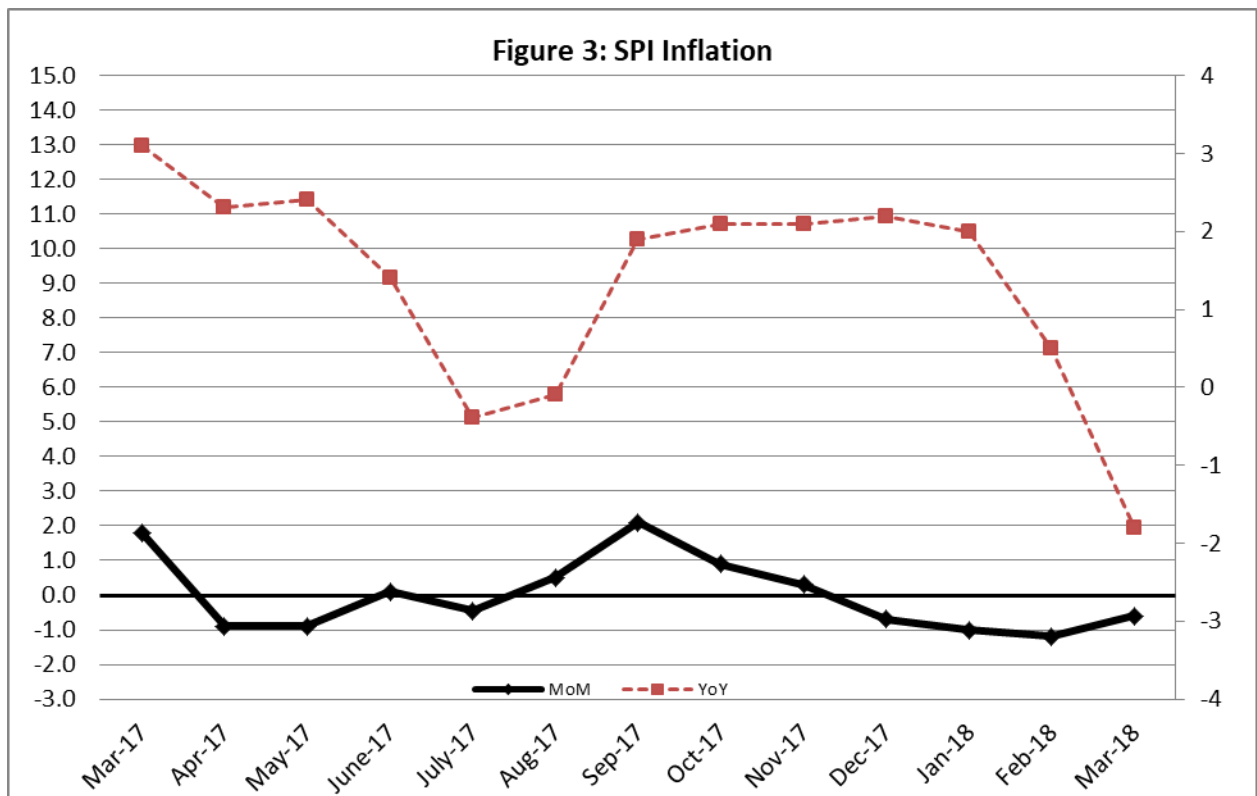
**Non-food Items Increased:** Kerosene Oil (30.58%), Education (17.60%), Motor Fuel (13.18%), Newspaper (12.34%), Construction Wage Rates (9.05%), Personal Equipments (8.81%), Cleaning & Laundry (8.59%), Doctor MBBS Fee (8.14%), Tailoring (8.13%), Motor Vehicles (7.48%), Readymade Garments (6.68%), Medical Tests (6.19%), Household Servant (6.17%), Water Supply (6.12%), Utensils (6.02%), Construction Input Items (5.65%), Hosiery (5.35%) and Postal Services (5.22%).

### III. Sensitive Price Indicator

Quintile-wise percentage changes YoY and MoM are given below in Table 3. The series from March 2017 to March 2018 is also graphed below in Figure 3.

Table 3: Sensitive Price Indicator (Base 2007-08)					
Quintiles	Indices			% Change March 2018 over	
	March 2018	February 2018	March 2017	February 2018	March 2017
1	209.37	210.63	213.26	-0.60	-1.82
2	217.75	218.79	221.11	-0.48	-1.52
3	219.57	220.43	222.53	-0.39	-1.33
4	224.75	225.34	227.66	-0.26	-1.28
5	224.00	224.04	225.07	-0.02	-0.48
Combined	221.67	222.19	223.62	-0.23	-0.87

Table 3.1 : Weekly Percentage Change of SPI During March-18					
Quintiles	% Change with Previous week				
	1 <sup>st</sup> Mar-2018	8 <sup>th</sup> Mar-2018	15 <sup>th</sup> Mar-2017	22 <sup>nd</sup> Mar-2018	29 <sup>th</sup> March-2018
Quantile 1	-0.17	0.11	-0.29	-0.12	-0.16
Combined	0.03	0.17	-0.26	-0.10	-0.16



## IV. Wholesale Price Index

The Wholesale Price Index for March, 2018 increased by 0.25% over February, 2018. It increased by 3.65% over the corresponding month of the last year. YoY and MoM movements, from March, 2017 to March, 2018 are also graphed below in Figure 4.

**Table 4 : Wholesale Price Index by Group of Commodities (Base 2007-08)**

No.	Group	Group Weight (%)	Indices			% Change March, 2018 over		Impact (in %age points) March, 2018 over	
			Mar. 2018	Feb. 2018	Mar. 2017	Feb. 2018	Mar. 2017	Feb. 2018	Mar. 2017
	<b>General</b>	<b>100.00</b>	<b>225.22</b>	<b>224.66</b>	<b>217.29</b>	<b>0.25</b>	<b>3.65</b>	<b>0.25</b>	<b>3.65</b>
1.	Agriculture, Forestry & Fishery Products	25.77	254.55	252.97	247.41	0.62	2.89	0.18	0.85
2.	Ores & Minerals, Electricity, Gas & Water	12.04	242.92	243.39	242.56	-0.19	0.15	-0.03	0.02
3.	Food Products, Beverages & Tobacco, Textiles, Apparel & Leather Products	31.11	231.06	231.40	227.09	-0.15	1.75	-0.05	0.57
	i. Food Products, Bev. & Tobacco	20.07	238.95	238.10	238.45	0.36	0.21	0.08	0.05
	ii. Textiles and Apparel	10.33	218.16	220.82	206.89	-1.20	5.45	-0.12	0.54
	iii. Leather Products	0.71	195.77	195.77	199.75	0.00	-1.99	0.00	-0.01
4.	Other Transportable Goods except Metal Products, Machinery & Equipment	22.37	191.75	190.61	171.65	0.60	11.71	0.11	2.07
5.	Metal Products, Machinery & Equipment	8.72	179.07	178.47	175.44	0.34	2.07	0.02	0.15

Main contributors to month-on-month and year-on-year percentage changes are given below and detail is given in Annexure B.

1. **Month-on-month** Top few commodities which varied from previous month i.e. February, 2018 are given below:-

**Increased:** Fresh Fruits (10.04%), Kerosene Oil (8.84%), Motor Vehicles (8.01%), Jowar (5.85%), Petrol (4.22%), Poultry (3.79%), Fibre Crops (3.38%), Maize (2.93%), Bajra (2.82%), Coffee & Tea (2.36%), Diesel (2.18%), Steel Bar & Sheets (2.00%), Dairy Products N.E.C (1.84%), Mineral Water (1.61%) and Meat of animals (1.15%)..

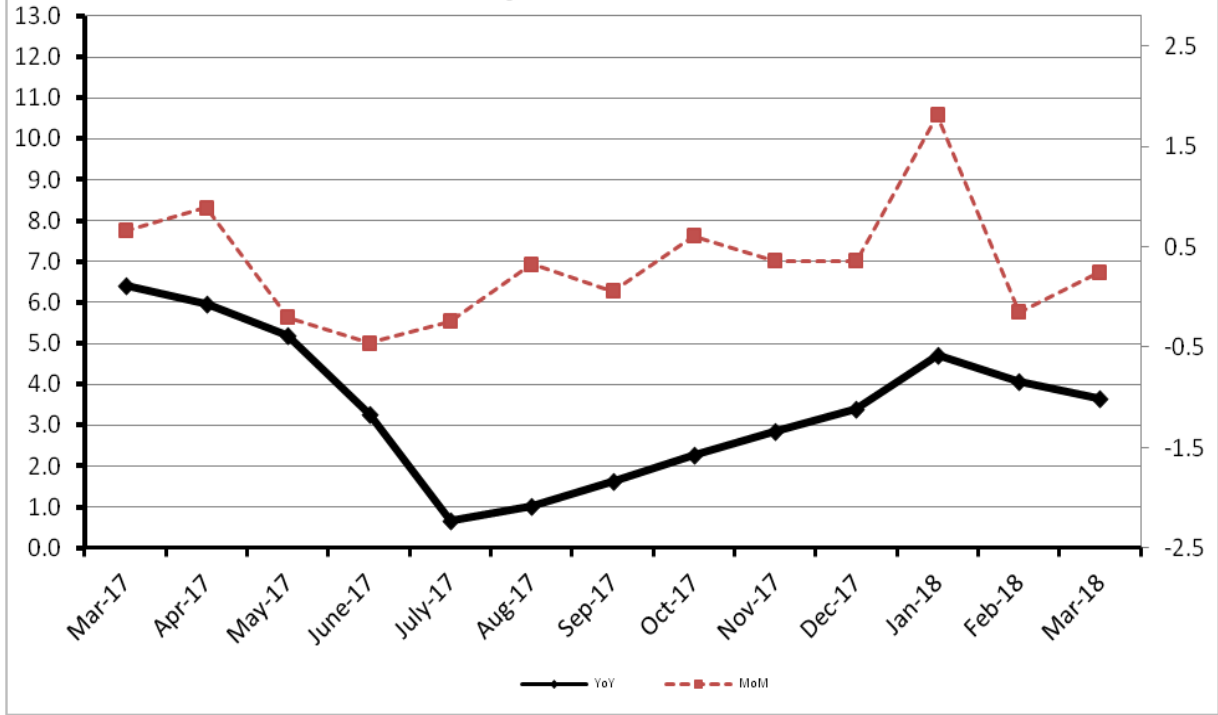
**Decreased:** Potatoes (11.43%), Vegetables (11.03%), Other Oil Seeds (5.70%), Eggs (4.99%), Pulses (3.67%), Other Cereal Flour (3.60%), Furnace Oil (3.36%), Hides & Fur Skins (2.90%), Cotton Yarn (2.39%) and Oil Cakes (2.10%).

2. **Year-on-year** Top few commodities which varied from previous year i.e. March, 2017 are given below:-

**Increased:** Kerosene Oil (74.00%), Diesel (31.99%), Stimulant & Spice Crops (22.06%), Petrol (20.67%), Furnace Oil (20.29%), Eggs (16.35%), Bajra (13.39%), Dry Fruits (13.24%), Meat of Animals (11.06%), Salt & Pure Sodium Chloride (10.87%), Unmanufactured Tobacco (10.85%), Chemicals (10.28%), Dried Fruits & Nuts (10.27%), Motor Vehicles (10.25%) and Steel Bar & Sheets (10.11%).

**Decreased:** Tobacco Products (28.59%), Potatoes (23.57%), Other Cereal Flour (16.10%), Sugar (15.14%) and Vegetables (14.67%).

Figure 4: WPI Inflation





**Annexure A:CPI by Commodity Groups and Commodities (2007-08=100)**

Item and Specification	Weight	Index Numbers			% Change in Mar 2018 over			
		Mar 2018	Feb 2018	Mar 2017	Feb 2018	Mar 2017		
<b><i>General</i></b>	<b>100.0000</b>	<b>220.25</b>	<b>219.58</b>	<b>213.32</b>	+	<b>0.31</b>	+	<b>3.25</b>
<b><i>Food and non-alcoholic Beverages</i></b>	<b>34.8343</b>	<b>228.39</b>	<b>229.23</b>	<b>226.16</b>	-	<b>0.37</b>	+	<b>0.99</b>
1 Wheat	0.3477	204.63	205.66	208.99	-	0.50	-	2.09
2 Wheat Flour	4.1648	211.52	212.84	213.15	-	0.62	-	0.76
3 Wheat Product	0.0959	214.16	214.30	216.57	-	0.07	-	1.11
4 Besan	0.1500	267.57	271.63	296.24	-	1.49	-	9.68
5 Rice	1.5821	192.45	191.61	169.87	+	0.44	+	13.29
6 Cereals	0.1563	259.04	259.02	253.81	+	0.01	+	2.06
7 Bakery & Confectionary	1.1550	224.66	224.55	217.20	+	0.05	+	3.43
8 Nimco	0.4574	258.14	257.41	250.97	+	0.28	+	2.86
9 Meat	2.4303	293.53	290.84	270.81	+	0.92	+	8.39
10 Chicken	1.3596	207.80	199.06	201.47	+	4.39	+	3.14
11 Fish	0.2970	224.31	221.93	218.06	+	1.07	+	2.87
12 Milk Fresh	6.6800	279.50	279.48	269.32	+	0.01	+	3.78
13 Milk Products	0.6338	272.17	271.59	258.90	+	0.21	+	5.13
14 Milk Powder	0.1129	239.08	238.41	234.74	+	0.28	+	1.85
15 Eggs	0.4555	198.03	213.54	180.60	-	7.26	+	9.65
16 Mustard Oil	0.0952	162.97	162.81	157.82	+	0.10	+	3.26
17 Cooking Oil	1.7538	139.23	138.56	136.67	+	0.48	+	1.87
18 Vegetable Ghee	2.0714	143.79	143.55	142.06	+	0.17	+	1.22
19 Dry Fruits	0.2543	279.84	278.60	263.92	+	0.45	+	6.03
20 Fresh Fruits	1.8649	266.29	249.68	253.63	+	6.65	+	4.99
21 Pulse Masoor	0.2712	160.02	161.17	184.74	-	0.71	-	13.38
22 Pulse Moong	0.2336	218.82	220.84	247.04	-	0.91	-	11.42
23 Pulse Mash (Washed)	0.2098	217.65	221.64	279.33	-	1.80	-	22.08
24 Pulse Gram	0.2361	259.27	264.85	294.15	-	2.11	-	11.86
25 Gram Whole	0.1616	280.90	287.97	283.59	-	2.46	-	0.95
26 Beans	0.0269	245.21	243.43	229.58	+	0.73	+	6.81
27 Potatoes	0.4598	160.07	175.00	188.01	-	8.53	-	14.86
28 Onion	0.5239	204.19	252.59	204.99	-	19.16	-	0.39
29 Tomatoes	0.4318	97.45	121.90	213.35	-	20.06	-	<u>54.32</u>
30 Fresh Vegetables	1.7105	202.58	218.60	225.89	-	7.33	-	10.32
31 Sugar	1.0445	184.51	186.44	216.84	-	1.04	-	14.91
32 Gur	0.0220	238.44	245.06	260.80	-	2.70	-	8.57
33 Honey	0.0446	341.03	341.03	323.63	+	0.00	+	5.38
34 SweetMeat	0.2483	257.09	256.66	247.44	+	0.17	+	3.90
35 Beverages	1.1990	227.38	226.80	219.43	+	0.26	+	3.62
36 Jam, Tomato Ketchup & Pickles	0.2454	225.48	224.88	217.05	+	0.27	+	3.88
37 Condiments	0.2656	278.51	277.53	266.36	+	0.35	+	4.56
38 Spices	0.5441	239.75	239.80	237.90	-	0.02	+	0.78
39 Tea	0.8377	296.63	287.65	283.96	+	3.12	+	4.46
<b><i>Alcoholic Beverages, Tobacco</i></b>	<b>1.4135</b>	<b>316.60</b>	<b>313.39</b>	<b>380.92</b>	+	<b>1.02</b>	-	<b>16.89</b>
40 Cigarettes	1.3906	306.62	306.13	383.20	+	0.16	-	19.98
41 Betel Leaves & Nuts	0.0229	922.46	754.58	242.66	+	22.25	+	280.15
<b><i>Clothing and footwear</i></b>	<b>7.5708</b>	<b>245.80</b>	<b>245.03</b>	<b>234.46</b>	+	<b>0.31</b>	+	<b>4.84</b>
42 Cotton Cloth	1.7286	238.01	236.48	226.99	+	0.65	+	4.85
43 Woolen Cloth	0.8759	264.09	263.65	254.82	+	0.17	+	3.64
44 Readymade Garments	0.9739	256.20	254.72	240.15	+	0.58	+	6.68
45 Woolen Readymade Garments	0.3964	266.38	266.71	260.01	-	0.12	+	2.45
46 Hosiery	0.5094	259.22	258.30	246.06	+	0.36	+	5.35

**Annexure A:CPI by Commodity Groups and Commodities (2007-08=100)**

Item and Specification	Weight	Index Numbers			% Change in Mar 2018 over		
		Mar 2018	Feb 2017	Mar 2017	Feb 2018	Mar 2017	
47 Dopatta	0.4412	255.58	254.12	243.87	+	0.57	+ 4.80
48 Cleaning and Laundry	0.2110	284.44	284.23	261.93	+	0.07	+ 8.59
49 Tailoring	0.8840	336.91	336.77	311.57	+	0.04	+ 8.13
50 Footwear	1.5504	167.95	167.82	166.99	+	0.08	+ 0.57
<b><u>Housing, water, Elec., Gas and other</u></b>	<b>29.4149</b>	<b>202.71</b>	<b>202.62</b>	<b>194.44</b>	<b>+</b>	<b>0.04</b>	<b>+ 4.25</b>
51 House Rent	21.8149	195.96	195.96	185.86	+	0.00	+ 5.43
52 Construction Input Items	0.5623	264.40	261.97	250.25	+	0.93	+ 5.65
53 Construction Wage Rates	0.3331	257.14	255.15	235.79	+	0.78	+ 9.05
54 Water Supply	0.4971	174.83	173.82	164.74	+	0.58	+ 6.12
55 Electricity	4.3985	238.10	238.10	238.10	+	0.00	+ 0.00
56 Gas	1.5756	158.08	158.08	158.08	+	0.00	+ 0.00
57 Kerosene Oil	0.0057	259.58	246.23	198.79	+	5.42	+ 30.58
58 Firewood Whole	0.2277	302.24	301.93	290.59	+	0.10	+ 4.01
<b><u>Furnishing and household</u></b>	<b>4.2082</b>	<b>234.67</b>	<b>233.50</b>	<b>224.59</b>	<b>+</b>	<b>0.50</b>	<b>+ 4.49</b>
59 Furniture	0.3315	228.22	227.53	216.92	+	0.30	+ 5.21
60 Household Textiles	0.6489	236.78	235.96	226.73	+	0.35	+ 4.43
61 Household Equipment	0.5936	185.70	184.74	180.25	+	0.52	+ 3.02
62 Utensils	0.3212	242.89	242.26	229.10	+	0.26	+ 6.02
63 Plastic Products	0.2547	218.99	218.40	209.59	+	0.27	+ 4.48
64 Washing Soaps & Detergents	0.7893	235.67	235.23	230.42	+	0.19	+ 2.28
65 Sewing Needle & Dr Cell	0.1496	211.92	210.07	205.59	+	0.88	+ 3.08
66 Household Servant	1.0432	265.40	262.86	249.98	+	0.97	+ 6.17
67 Marriage Hall Charges	0.0762	257.76	257.76	245.66	+	0.00	+ 4.93
<b><u>Health</u></b>	<b>2.1868</b>	<b>221.26</b>	<b>220.58</b>	<b>211.21</b>	<b>+</b>	<b>0.31</b>	<b>+ 4.76</b>
68 Drugs & Medicines	1.2667	187.99	187.75	184.27	+	0.13	+ 2.02
69 Medical Equipments	0.0080	256.26	256.26	251.01	+	0.00	+ 2.09
70 Doctor (MBBS) Clinic Fee	0.5904	300.06	298.32	277.47	+	0.58	+ 8.14
71 Medical Tests	0.3217	206.75	206.26	194.69	+	0.24	+ 6.19
<b><u>Transport</u></b>	<b>7.2023</b>	<b>186.98</b>	<b>184.47</b>	<b>175.69</b>	<b>+</b>	<b>1.36</b>	<b>+ 6.43</b>
72 Motor Vehicles	0.6630	185.84	180.19	172.91	+	3.14	+ 7.48
73 Motor Vehicle Accessories	0.2439	216.02	215.18	213.27	+	0.39	+ 1.29
74 Motor Fuel	3.0269	167.63	163.92	148.11	+	2.26	+ 13.18
75 Mechanical Service	0.4552	238.14	237.06	229.92	+	0.46	+ 3.58
76 Motor Vehicle Tax	0.1099	210.18	210.18	210.18	+	0.00	+ 0.00
77 Transport Services	2.7034	196.76	195.86	193.34	+	0.46	+ 1.77
<b><u>Communication</u></b>	<b>3.2198</b>	<b>133.37</b>	<b>133.28</b>	<b>132.69</b>	<b>+</b>	<b>0.07</b>	<b>+ 0.51</b>
78 Postal Services	0.0662	259.00	255.80	246.14	+	1.25	+ 5.22
79 Communication & Apparatus	3.1536	130.73	130.71	130.31	+	0.02	+ 0.32
<b><u>Recreation and culture</u></b>	<b>2.0227</b>	<b>200.38</b>	<b>198.62</b>	<b>197.14</b>	<b>+</b>	<b>0.89</b>	<b>+ 1.64</b>
80 Recreation & Culture	0.8634	132.03	131.62	129.62	+	0.31	+ 1.86
81 Text Books	0.5706	287.98	287.98	292.41	+	0.00	- 1.51
82 Newspapers	0.1934	202.81	186.23	180.53	+	8.90	+ 12.34
83 Stationery	0.3953	222.02	222.00	215.22	+	0.01	+ 3.16
<b><u>Education</u></b>	<b>3.9431</b>	<b>275.17</b>	<b>262.35</b>	<b>233.98</b>	<b>+</b>	<b>4.89</b>	<b>+ 17.60</b>
84 Education	3.9431	275.17	262.35	233.98	+	4.89	+ 17.60
<b><u>Restaurants and hotels</u></b>	<b>1.2286</b>	<b>287.84</b>	<b>287.21</b>	<b>271.02</b>	<b>+</b>	<b>0.22</b>	<b>+ 6.21</b>
85 Readymade Food	1.2286	287.84	287.21	271.02	+	0.22	+ 6.21
<b><u>Misc. goods and services</u></b>	<b>2.7550</b>	<b>256.35</b>	<b>255.21</b>	<b>242.19</b>	<b>+</b>	<b>0.45</b>	<b>+ 5.85</b>
86 Personal Care	1.4935	234.18	233.45	224.06	+	0.31	+ 4.52
87 Cosmetics	0.3853	208.65	206.60	203.77	+	0.99	+ 2.39
88 Blades	0.0322	201.85	201.62	195.52	+	0.11	+ 3.24
89 Personal Equipments	0.8440	319.45	317.95	293.59	+	0.47	+ 8.81

## Annexure B: Wholesale Price Indices by Major Groups &amp; Commodities

(2007-08=100)

Item and Specification	Weight	Index Numbers			% Change in Mar 2018 over			
		Mar 18	Feb 18	Mar 17	Feb 2018	Mar 2017		
<b>General</b>	<b>100.0000</b>	<b>225.22</b>	<b>224.66</b>	<b>217.29</b>	<b>+</b>	<b>0.25</b>	<b>+</b>	<b>3.65</b>
<b>Agriculture Forestry &amp; Fisher</b>	<b>25.7674</b>	<b>254.55</b>	<b>252.97</b>	<b>247.41</b>	<b>+</b>	<b>0.62</b>	<b>+</b>	<b>2.89</b>
001 Wheat	0.6297	209.00	210.64	215.36	-	0.78	-	2.95
002 Maize	0.6764	205.11	199.27	188.80	+	2.93	+	8.64
003 Rice	2.4413	173.85	174.06	158.39	-	0.12	+	9.76
004 Sorghum / Jowar	0.0214	256.85	242.65	252.72	+	5.85	+	1.63
005 Millet / Bajra	0.0374	188.77	183.60	166.48	+	2.82	+	13.39
006 Vegetables	1.2441	195.23	219.44	228.79	-	11.03	-	14.67
007 Fresh Fruits	1.5144	291.61	265.01	266.14	+	10.04	+	9.57
008 Dry Fruits	0.2478	269.25	267.56	237.76	+	0.63	+	13.24
009 Cotton Seeds	1.1511	257.18	256.23	273.72	+	0.37	-	6.04
010 Other Oil Seeds	0.0722	177.04	187.75	181.57	-	5.70	-	2.49
011 Edible Roots / Potatoes	0.2540	148.10	167.22	193.76	-	11.43	-	23.57
012 Stimulant & Spice Crops	0.1634	266.39	269.38	218.25	-	1.11	+	22.06
013 Pulses	0.4901	240.45	249.60	262.14	-	3.67	-	8.27
014 Sugar Crops	1.0725	257.62	257.62	268.94	+	0.00	-	4.21
015 Fibre Crops	5.3169	234.67	226.99	219.67	+	3.38	+	6.83
016 Unmanufactured Tobacco	0.0742	308.03	305.98	277.89	+	0.67	+	10.85
017 Poultry	0.5633	219.05	211.05	217.22	+	3.79	+	0.84
018 Raw Milk from Bovine Animals	7.0279	275.47	275.47	266.07	+	0.00	+	3.53
019 Eggs	0.5034	201.84	212.43	173.47	-	4.99	+	16.35
020 Raw Animal Materials / Wool	0.0351	173.81	173.81	177.63	+	0.00	-	2.15
021 Hides & Fur Skins, Raw	0.4834	101.97	105.02	106.49	-	2.90	-	4.24
022 Fuel Wood in Logs	0.0179	283.56	283.56	279.63	+	0.00	+	1.41
023 Fish Live Fresh or Chilled	1.7295	476.70	477.80	466.06	-	0.23	+	2.28
<b>Ores/Minerals, Elec., Gas &amp; W</b>	<b>12.0389</b>	<b>242.92</b>	<b>243.39</b>	<b>242.56</b>	<b>-</b>	<b>0.19</b>	<b>+</b>	<b>0.15</b>
024 Coal not Agglomerated	0.7508	155.29	155.29	155.29	+	0.00	+	0.00
025 Natural Gas Liquefied	5.7385	211.00	212.02	210.52	-	0.48	+	0.23
026 Salt & Pure Sodium Chloride	0.0584	266.38	264.37	240.26	+	0.76	+	10.87
027 Electrical Energy	5.4912	288.00	288.00	288.00	+	0.00	+	0.00
<b>Food, Beverages, Tobacco, Textil</b>	<b>31.1122</b>	<b>231.06</b>	<b>231.40</b>	<b>227.09</b>	<b>-</b>	<b>0.15</b>	<b>+</b>	<b>1.75</b>
<b>Food Products, Beverages &amp;</b>	<b>20.0718</b>	<b>238.95</b>	<b>238.10</b>	<b>238.45</b>	<b>+</b>	<b>0.36</b>	<b>+</b>	<b>0.21</b>
028 Meat of Animals	3.4559	314.84	311.27	283.49	+	1.15	+	11.06
029 Vegetables & Fruit Juice	0.0058	224.97	224.97	223.21	+	0.00	+	0.79
030 Dried Fruits & Nuts	0.1733	291.20	297.11	264.08	-	1.99	+	10.27
031 Fruit Juices	0.3880	183.21	182.60	179.97	+	0.33	+	1.80
032 Vegetable Oils Refined	1.9242	156.57	156.36	154.86	+	0.13	+	1.10
033 Vegetable Ghee	1.5632	127.28	126.69	126.57	+	0.47	+	0.56
034 Oil Cakes	0.9611	226.67	231.54	226.58	-	2.10	+	0.04
035 Processed Liquid Milk	4.4437	288.23	286.83	262.24	+	0.49	+	9.91
036 Milk & Cream in Solid Form	0.0316	223.34	223.55	218.15	-	0.09	+	2.38
037 Ice Cream	0.0047	266.02	266.02	245.21	+	0.00	+	8.49
038 Dairy Products N.E.C	0.0117	272.54	267.61	254.42	+	1.84	+	7.12
039 Wheat Flour	2.3034	194.41	195.72	197.79	-	0.67	-	1.71
040 Other Cereal Flour	0.0604	210.20	218.04	250.54	-	3.60	-	16.10
041 Sugar Refined	1.7975	189.93	189.16	223.81	+	0.41	-	15.14
042 Chocolate	0.0139	100.00	100.00	100.00	+	0.00	+	0.00
043 Sugar Confectionary	0.0738	127.85	127.85	128.44	+	0.00	-	0.46
044 Coffee & Tea	0.7303	267.98	261.80	254.52	+	2.36	+	5.29
045 Spices	0.1449	202.23	202.23	190.42	+	0.00	+	6.20
046 Other Food Products	0.0336	294.50	294.50	293.85	+	0.00	+	0.22
047 Mineral Water	0.0207	211.50	208.14	198.57	+	1.61	+	6.51
048 Beverages	0.6303	173.00	172.85	172.33	+	0.09	+	0.39
049 Tobacco Products	1.2998	318.37	318.37	445.85	+	0.00	-	28.59
<b>Textiles &amp; Apparels</b>	<b>10.3289</b>	<b>218.16</b>	<b>220.82</b>	<b>206.89</b>	<b>-</b>	<b>1.20</b>	<b>+</b>	<b>5.45</b>
050 Cotton Yarn	5.2491	222.05	227.49	203.06	-	2.39	+	9.35
051 Nylon Yarn	0.1719	143.99	143.99	143.99	+	0.00	+	0.00
052 Blended Yarn	0.1689	189.19	188.55	182.33	+	0.34	+	3.76
053 Woven Fabrics	0.0128	321.49	321.49	310.72	+	0.00	+	3.47
054 Cotton Fabrics	0.6343	214.23	213.18	209.30	+	0.49	+	2.36
055 Other Fabrics	1.1016	227.16	227.16	224.40	+	0.00	+	1.23
056 Silk & Reyon Fabrics	0.7350	188.14	188.14	186.55	+	0.00	+	0.85
057 Towels	0.1235	276.14	276.14	276.14	+	0.00	+	0.00
058 Blankets	0.0029	265.03	265.03	247.52	+	0.00	+	7.07
059 Bed Sheets	0.0913	256.87	256.87	256.07	+	0.00	+	0.31

## Annexure B: Wholesale Price Indices by Major Groups &amp; Commodities

(2007-08=100)

Item and Specification	Weight	Index Numbers			% Change in Mar 2018 over	
		Mar 18	Feb 18	Mar 17	Feb 2018	Mar 2017
060 Quilts	0.0019	222.32	222.32	203.79	+ 0.00	+ 9.09
061 Woolen Carpets	0.0383	196.43	196.43	196.43	+ 0.00	+ 0.00
062 Synthetic Carpets	0.0566	130.95	130.95	130.95	+ 0.00	+ 0.00
063 Hosiery Products	0.8832	244.42	244.11	241.83	+ 0.13	+ 1.07
064 Readymade Garments	1.0576	201.37	201.37	196.08	+ 0.00	+ 2.70
<b>Leather Products</b>	<b>0.7115</b>	<b>195.77</b>	<b>195.77</b>	<b>199.75</b>	<b>+ 0.00</b>	<b>- 1.99</b>
065 Leather Without Hair	0.2973	212.68	212.68	221.97	+ 0.00	- 4.19
066 Other Leather N.E.C	0.2567	207.02	207.02	207.31	+ 0.00	- 0.14
067 Footwears	0.1575	145.51	145.51	145.51	+ 0.00	+ 0.00
<b>Other Transportable Goods</b>	<b>22.3659</b>	<b>191.75</b>	<b>190.61</b>	<b>171.65</b>	<b>+ 0.60</b>	<b>+ 11.71</b>
068 Timber	0.0165	237.00	237.00	226.13	+ 0.00	+ 4.81
069 Printing Paper	0.4279	168.59	168.59	165.63	+ 0.00	+ 1.79
070 Hard Board	0.1579	225.00	225.00	220.83	+ 0.00	+ 1.89
071 Coke	0.2797	163.45	163.45	163.45	+ 0.00	+ 0.00
072 Motor Spirit	1.5336	148.77	142.75	123.29	+ 4.22	+ 20.67
073 Diesel Oil	5.2664	205.65	201.27	155.81	+ 2.18	+ 31.99
074 Kerosine Oil	0.2151	203.79	187.24	117.12	+ 8.84	+ 74.00
075 Furnace Oil	3.2664	125.91	130.29	104.67	- 3.36	+ 20.29
076 Mobil Oil	0.7114	200.85	200.85	196.91	+ 0.00	+ 2.00
077 Chemicals	1.7720	188.57	188.23	170.99	+ 0.18	+ 10.28
078 Dyeing Material	0.1539	146.55	146.55	146.55	+ 0.00	+ 0.00
079 Fertilizers	2.8657	226.19	225.55	216.49	+ 0.28	+ 4.48
080 Pesticides	0.2763	310.16	310.16	304.43	+ 0.00	+ 1.88
081 Insecticides	0.1276	140.61	140.56	143.92	+ 0.04	- 2.30
082 Paints & Varnishes	0.1916	301.12	301.12	294.51	+ 0.00	+ 2.24
083 Medicines	1.1428	177.01	177.01	174.85	+ 0.00	+ 1.24
084 Soaps & Detergents	0.8168	191.35	191.35	191.21	+ 0.00	+ 0.07
085 Auto Tyres	0.2703	177.11	177.07	177.07	+ 0.02	+ 0.02
086 Plastic Products	0.4550	226.00	226.00	225.88	+ 0.00	+ 0.05
087 Glass sheets	0.2089	302.27	302.27	298.97	+ 0.00	+ 1.10
088 Other Glass Articles	0.1635	318.10	318.10	312.91	+ 0.00	+ 1.66
089 Ceramics & Sanitary Fixture	0.0244	234.76	234.76	233.92	+ 0.00	+ 0.36
090 Bricks, Blocks & Tiles	0.1566	223.30	223.59	220.98	- 0.13	+ 1.05
091 Cement	1.8145	210.55	209.70	216.71	+ 0.41	- 2.84
092 Bed Foam	0.0006	173.00	173.00	170.83	+ 0.00	+ 1.27
093 Matches	0.0505	171.36	171.36	165.53	+ 0.00	+ 3.52
<b>Metal Product, Machinery &amp; Eq</b>	<b>8.7156</b>	<b>179.07</b>	<b>178.47</b>	<b>175.44</b>	<b>+ 0.34</b>	<b>+ 2.07</b>
094 Pig Iron	0.0593	128.97	128.97	128.97	+ 0.00	+ 0.00
095 Steel Bar & Sheets	1.4022	147.50	144.61	133.96	+ 2.00	+ 10.11
096 Pipe Fittings	0.0780	215.66	215.66	215.29	+ 0.00	+ 0.17
097 Steel Products	0.3879	176.70	176.70	177.48	+ 0.00	- 0.44
098 Engines & Motors	0.0046	116.98	116.98	116.98	+ 0.00	+ 0.00
099 Vacuum Pumps	0.0155	123.69	123.69	123.69	+ 0.00	+ 0.00
100 Air Conditioners	0.0049	200.10	200.10	200.10	+ 0.00	+ 0.00
101 Cultivators	0.0551	190.66	190.66	190.66	+ 0.00	+ 0.00
102 Chuff Cutter	0.1293	153.46	153.46	153.46	+ 0.00	+ 0.00
103 Tractors	0.0028	201.75	201.75	201.75	+ 0.00	+ 0.00
104 Lathe Machines	0.0525	241.06	241.06	241.06	+ 0.00	+ 0.00
105 Concrete Mixture	0.0107	138.83	138.83	138.83	+ 0.00	+ 0.00
106 Fridge,WashM,SewM,Fans,Iron	1.1645	218.55	217.87	208.84	+ 0.31	+ 4.65
107 Electric Wires	0.0912	205.92	205.92	204.51	+ 0.00	+ 0.69
108 Lighting Equipments	1.4431	171.39	171.39	170.73	+ 0.00	+ 0.39
109 Radio & Television	0.1843	140.42	140.42	140.42	+ 0.00	+ 0.00
110 Motor Vehicles	0.0244	211.00	195.36	191.39	+ 8.01	+ 10.25
111 Motorcycles	0.2570	126.05	126.05	125.89	+ 0.00	+ 0.13
112 Bicycles	3.3483	187.65	187.65	187.65	+ 0.00	+ 0.00