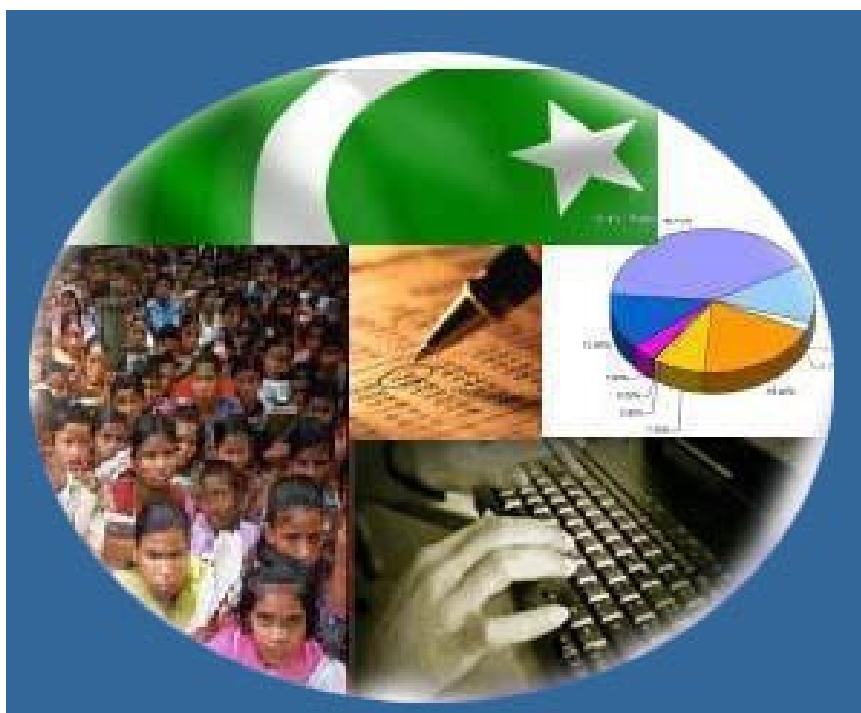


Monthly Review on Price Indices



March, 2017
(Base 2007-08)

Government of Pakistan
Statistics Division
Pakistan Bureau of Statistics
Islamabad

Inflation in Brief

1. CPI inflation General increased by 4.9% on year-on-year basis in March 2017 as compared to an increase of 4.2% in the previous month and 3.9% in March 2016. On month-on-month basis, it increased by 0.8% in March 2017 as compared to an increase of 0.3% in the previous month and an increase of 0.1% in March 2016.
2. Core inflation measured by non-food non-energy CPI (Core NFNE) increased by 5.3% on (YoY) basis in March 2017 as compared to increase of 5.3% in the previous month and 4.7% in March 2016. On (MoM) basis, it increased by 0.1% in March 2017 as compared to increase of 0.2% in previous month, and an increase of 0.2% in corresponding month of last year i.e. March 2016.
3. Core inflation, measured by 20% weighted trimmed mean CPI (Core Trimmed) increased by 4.5% on (YoY) basis in March 2017 as compared to 4.1% in the previous month and by 3.8% in March 2016. On (MoM) basis, it increased by 0.2% in March 2017 as compared to an increase of 0.2% in the previous month and an increase of 0.2% in corresponding month of last year i.e. March 2016.
4. SPI inflation on YoY increased by 3.1% in March 2017 as compared to an increase of 1.1% a month earlier and an increase of 3.5% in March 2016. On MoM basis, it increased by 1.8% in March 2017 as compared to an increase of 0.2% a month earlier and a decrease of 0.2% in March 2016.
5. WPI inflation on YoY basis increased by 6.4% in March 2017 as compared to an increase of 5.3% a month earlier and an increase of 0.2% in March 2016. WPI inflation on MoM basis increased by 0.7% in March 2017 as compared to an increase of 0.5% a month earlier and a decrease of 0.4% in corresponding month of last year i.e. March 2016.
6. Figures 1 and 2 show graphically the data of Table 1. Table 1.1 shows "Period Average" and "YoY" percent changes in indices of three years.

Table 1: Inflation (%) (Base 2007-08)

| Period | CPI | | | | | | Core Inflation | | | | SPI** | | WPI | |
|----------|---------|------|------|------|----------|------|----------------|-----|---------|-----|-------|------|-----|------|
| | General | | Food | | Non-food | | NFNE* | | Trimmed | | YoY | MoM | YoY | MoM |
| | YoY | MoM | YoY | MoM | YoY | MoM | YoY | MoM | YoY | MoM | | | | |
| Feb 16 | 4.0 | -0.3 | 3.7 | -0.7 | 4.2 | 0.0 | 4.5 | 0.2 | 3.6 | 0.1 | 3.6 | -0.5 | 0.6 | -0.6 |
| Mar 16 | 3.9 | 0.1 | 3.7 | 0.5 | 4.1 | -0.1 | 4.7 | 0.2 | 3.8 | 0.2 | 3.5 | -0.2 | 0.2 | -0.4 |
| April 16 | 4.2 | 1.5 | 4.7 | 2.4 | 3.8 | 1.0 | 4.4 | 1.1 | 3.8 | 0.6 | 2.9 | -0.1 | 0.6 | 1.3 |
| May 16 | 3.2 | -0.2 | 2.1 | -0.7 | 3.9 | 0.2 | 4.6 | 0.2 | 3.6 | 0.2 | 0.6 | -1.0 | 0.0 | 0.6 |
| June 16 | 3.2 | 0.6 | 2.3 | 1.4 | 3.8 | 0.1 | 4.6 | 0.1 | 3.7 | 0.2 | 0.7 | 1.1 | 0.2 | 1.4 |
| July 16 | 4.1 | 1.3 | 4.7 | 2.5 | 3.7 | 0.5 | 4.5 | 0.6 | 3.6 | 0.5 | 1.7 | 1.3 | 3.0 | 2.3 |
| Aug 16 | 3.6 | -0.3 | 3.4 | -0.9 | 3.7 | 0.2 | 4.6 | 0.2 | 3.5 | 0.1 | 2.2 | 0.2 | 3.5 | 0.0 |
| Sep 16 | 3.9 | 0.2 | 4.0 | 0.1 | 3.8 | 0.2 | 4.8 | 0.3 | 3.7 | 0.1 | 1.8 | 0.1 | 3.4 | -0.5 |
| Oct 16 | 4.2 | 0.8 | 4.4 | 0.8 | 4.1 | 0.8 | 5.2 | 0.9 | 3.8 | 0.6 | 1.3 | 0.7 | 2.8 | -0.0 |
| Nov 16 | 3.8 | 0.2 | 3.3 | 0.2 | 4.2 | 0.2 | 5.3 | 0.2 | 3.8 | 0.2 | 0.6 | 0.3 | 2.6 | -0.2 |
| Dec 16 | 3.7 | -0.7 | 3.0 | -1.9 | 4.2 | 0.2 | 5.2 | 0.1 | 3.7 | 0.1 | 0.5 | -0.8 | 3.1 | -0.1 |
| Jan 17 | 3.7 | 0.2 | 2.6 | -1.0 | 4.4 | 1.0 | 5.4 | 1.1 | 3.8 | 0.6 | 0.4 | -0.8 | 4.2 | 0.5 |
| Feb 17 | 4.2 | 0.3 | 3.7 | 0.3 | 4.6 | 0.3 | 5.3 | 0.2 | 4.1 | 0.2 | 1.1 | 0.2 | 5.3 | 0.5 |
| Mar 17 | 4.9 | 0.8 | 5.0 | 1.9 | 4.9 | 0.1 | 5.3 | 0.1 | 4.5 | 0.2 | 3.1 | 1.8 | 6.4 | 0.7 |

*NFNE is non-food non-energy, ** SPI for quintile 1. Digits 0.0* are due to rounding off.

Table 1.1 : Period Average and YoY % Changes of Indices (Base 2007-08)

| Index | Averages July-March % Changes | | | March over March % Changes | | |
|-------|-------------------------------|---------|---------|----------------------------|------|-------|
| | 2016-17 | 2015-16 | 2014-15 | 2017 | 2016 | 2015 |
| CPI | 4.01 | 2.64 | 5.12 | 4.94 | 3.94 | 2.49 |
| SPI | 1.42 | 1.27 | 2.25 | 3.12 | 3.45 | -1.89 |
| WPI | 3.79 | -1.50 | 0.36 | 6.40 | 0.16 | -3.67 |

Figure 2: CPI Inflation MoM, Special Indices

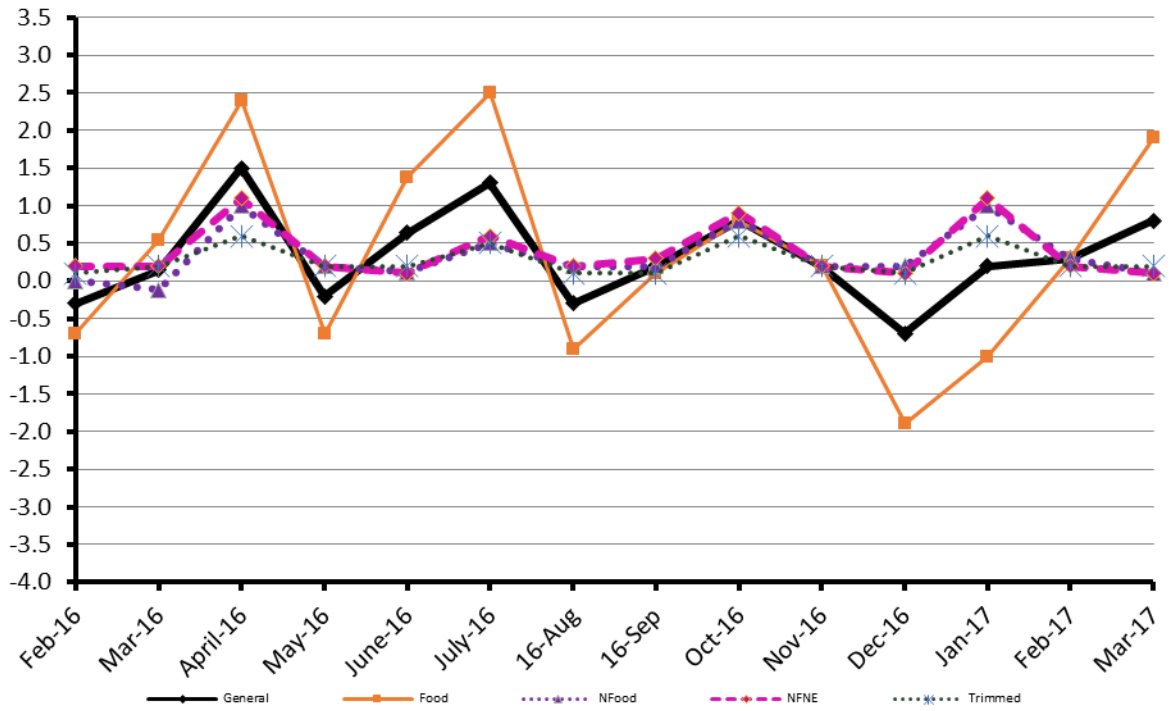
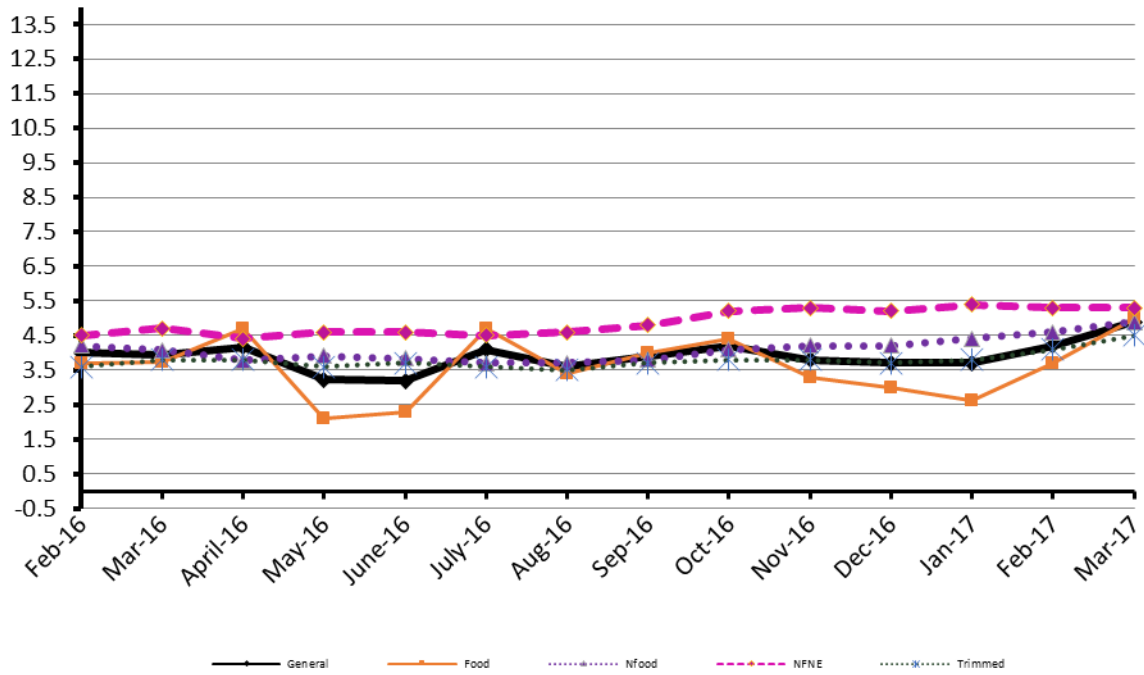


Figure 1: CPI Inflation YoY, Special Indices



II. Consumer Price Index (CPI)

The Consumer Price Index of March 2017, has increased by 0.84% over February 2016 and increased by 4.94% over corresponding month of the last year i.e. March 2016.

Table 2 : Consumer Price Index by Group of Commodities and Services (Base 2007-08)

| No | Group | Group Weight (%) | Indices | | | % Change March 2017 Over | | Impact (In % points) March 2017 Over | |
|-----|--|------------------|---------------|---------------|---------------|--------------------------|-------------|--------------------------------------|-------------|
| | | | Mar 2017 | Feb 2017 | Mar 2016 | Feb 2017 | Mar 2016 | Feb 2017 | Mar 2016 |
| | General | 100.00 | 213.32 | 211.54 | 203.28 | 0.84 | 4.94 | 0.84 | 4.94 |
| 1. | Food & Non-alcoholic Bev. | 34.83 | 226.16 | 221.66 | 216.13 | 2.03 | 4.64 | 0.74 | 1.72 |
| | <i>Non-perishable Food Items</i> | 29.84 | 225.68 | 224.69 | 219.27 | 0.44 | 2.92 | 0.14 | 0.94 |
| | <i>Perishable Food Items</i> | 4.99 | 229.04 | 203.59 | 197.35 | 12.50 | 16.06 | 0.60 | 0.78 |
| 2. | Alcoholic Bev.& Tobacco | 1.41 | 380.92 | 379.55 | 338.77 | 0.36 | 12.44 | 0.01 | 0.29 |
| 3. | Clothing & Footwear | 7.57 | 234.46 | 234.34 | 226.40 | 0.05 | 3.56 | 0.00 | 0.30 |
| 4. | Housing, Water, Electricity, Gas & Fuels | 29.41 | 194.44 | 194.45 | 185.48 | -0.01 | 4.83 | 0.00 | 1.30 |
| 5. | Furnishing & Household Equipment Maintenance | 4.21 | 224.59 | 224.32 | 219.50 | 0.12 | 2.32 | 0.01 | 0.11 |
| 6. | Health | 2.19 | 211.21 | 210.17 | 185.68 | 0.49 | 13.75 | 0.01 | 0.27 |
| 7. | Transport | 7.20 | 175.69 | 174.75 | 168.25 | 0.54 | 4.42 | 0.03 | 0.26 |
| 8. | Communication | 3.22 | 132.69 | 131.58 | 130.74 | 0.84 | 1.49 | 0.02 | 0.03 |
| 9. | Recreation & Culture | 2.02 | 197.14 | 196.88 | 194.71 | 0.13 | 1.25 | 0.00 | 0.02 |
| 10. | Education | 3.94 | 233.98 | 233.96 | 210.99 | 0.01 | 10.90 | 0.00 | 0.45 |
| 11. | Restaurants & Hotels | 1.23 | 271.02 | 269.63 | 261.80 | 0.52 | 3.52 | 0.01 | 0.06 |
| 12. | Miscellaneous | 2.76 | 242.19 | 241.06 | 232.55 | 0.47 | 4.15 | 0.01 | 0.13 |

Main contributors to month-on-month and year-on-year percentage changes are given below and detail is given in Annexure A.

- Month-on-month** Top few commodities which varied from previous month are given below:-

Food Items Increased: Tomatoes (68.43%), Chicken (21.6%), Onion (18.16%), Potatoes (15.48%), Fresh Fruits (12.52%), and Tea (5.1%).

Decreased: Eggs (21.34%), Pulse Gram (8.06%), Besan (4.49%), Sugar (4.39%), Pulse Masoor (4.16%), Gram whole (4.02%), Pulse Moong (3.66%), Pulse Mash (3.54%), and Gur (2.35%).

Non-food Items Increased: Motor Fuel (1.4%).

Decreased: Woolen Readymade Garments (1.88%).

- Year-on-Year:** Top few commodities which varied from previous year i.e. March 2016 are given below:-

Food Items Increased: Tomatoes (128.16%), Potatoes (49.92%), Gram Whole (27.59%), Chicken (18.92%), Besan (14.56%), Fresh Fruits (14.48%), Fresh Vegetables (11.04%), Pulse Gram (10.00%) and Tea (8.68%).

Decreased: Pulse Mash (19.95%), Onion (17.6%), Pulse Moong (17.22%), Pulse Masoor (8.98%), Sugar (2.82%), and Gur (2.48%).

Non-food Items Increased: Drugs & Medicines (20.8%), Education (10.9%), Motor Fuel (10.79%), Medical Equipments (10.44%), Doctor (MBBS) Clinic Fee (8.71%), Tailoring (6.63%), House Rent (6.62%), Personal Care (4.97%), and Construction Wage Rates (4.68%).

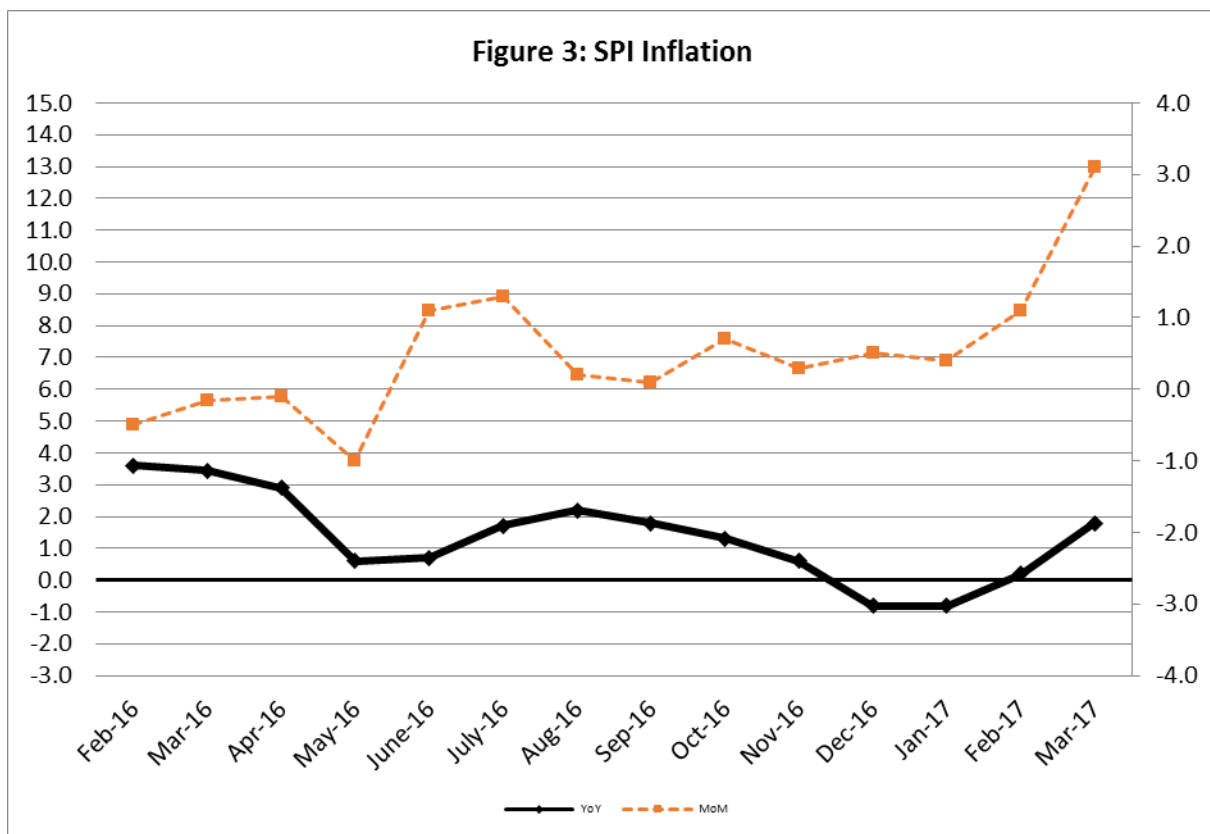
Decreased: Motor Vehicle Accessories (3.28%).

III. Sensitive Price Indicator

Quintile-wise percentage changes YoY and MoM are given below in Table 3. The series from February 2016 to March 2017 is also graphed below in Figure 3.

| Table 3: Sensitive Price Indicator (Base 2007-08) | | | | | |
|---|----------|----------|----------|--------------------------|----------|
| Quintiles | Indices | | | % Change March 2017 over | |
| | Mar 2017 | Feb 2017 | Mar 2016 | Feb 2017 | Mar 2016 |
| 1 | 213.26 | 209.50 | 206.81 | 1.79 | 3.12 |
| 2 | 221.11 | 217.04 | 213.97 | 1.88 | 3.34 |
| 3 | 222.53 | 218.21 | 214.76 | 1.98 | 3.62 |
| 4 | 227.66 | 223.13 | 219.04 | 2.03 | 3.94 |
| 5 | 225.07 | 220.57 | 215.46 | 2.04 | 4.46 |
| Combined | 223.62 | 219.25 | 215.13 | 1.99 | 3.95 |

| Table 3.1 : Weekly Percentage Change of SPI During March-17 | | | | | |
|---|-----------------------------|--------------------------|---------------------------|---------------------------|---------------------------|
| Quintiles | % Change with Previous week | | | | |
| | 2 nd Mar-2017 | 9 th Mar-2017 | 16 th Mar-2017 | 23 rd Mar-2017 | 30 th Mar-2017 |
| Quantile 1 | 0.40 | 0.60 | 0.54 | 1.09 | -0.24 |
| Combined | 0.53 | 0.66 | 0.49 | 1.19 | -0.19 |



IV. Wholesale Price Index

The Wholesale Price Index for March, 2017 increased by 0.66% over February, 2017. It increased by 6.40% over the corresponding month of the last year. YoY and MoM movements, from February, 2016 to March, 2017 are also graphed below in Figure 4.

Table 4 : Wholesale Price Index by Group of Commodities (Base 2007-08)

| No. | Group | Group Weight (%) | Indices | | | % Change March, 2017 over | | Impact (in %age points) March, 2017 over | |
|-----|--|------------------|---------------|---------------|---------------|---------------------------|-------------|--|-------------|
| | | | Mar 2017 | Feb 2017 | Mar 2016 | Feb 2017 | Mar 2016 | Feb 2017 | Mar 2016 |
| | General | 100.00 | 217.29 | 215.86 | 204.22 | 0.66 | 6.40 | 0.66 | 6.40 |
| 1. | Agriculture, Forestry & Fishery Products | 25.77 | 247.41 | 243.57 | 221.02 | 1.58 | 11.94 | 0.46 | 3.33 |
| 2. | Ores & Minerals, Electricity, Gas & Water | 12.04 | 242.56 | 242.78 | 245.22 | -0.09 | -1.08 | -0.01 | -0.16 |
| 3. | Food Products, Beverages & Tobacco, Textiles, Apparel & Leather Products | 31.11 | 227.09 | 226.40 | 214.66 | 0.30 | 5.79 | 0.10 | 1.89 |
| | i. Food Products, Bev. & Tobacco | 20.07 | 238.45 | 237.24 | 228.30 | 0.51 | 4.45 | 0.11 | 1.00 |
| | ii. Textiles and Apparel | 10.33 | 206.89 | 207.18 | 189.28 | -0.14 | 9.30 | -0.01 | 0.89 |
| | iii. Leather Products | 0.71 | 199.75 | 199.75 | 198.39 | 0.00 | 0.69 | 0.00 | 0.00 |
| 4. | Other Transportable Goods except Metal Products, Machinery & Equipment | 22.37 | 171.65 | 170.89 | 161.42 | 0.44 | 6.34 | 0.08 | 1.12 |
| 5. | Metal Products, Machinery & Equipment | 8.72 | 175.44 | 174.49 | 170.45 | 0.54 | 2.93 | 0.04 | 0.21 |

Main contributors to month-on-month and year-on-year percentage changes are given below and detail is given in Annexure B.

- Month-on-month** Top few commodities which varied from previous month i.e. February, 2017 are given below:-

Increased: Poultry (28.18%), Potatoes (17.82%), Fresh Fruits (15.24%), Vegetables (8.24%), Jowar (7.18%), Coffee & Tea (3.95%), Steel bar & Sheet (3.44%), Motor Spirit (2.40%), Cotton Seeds (2.16%), Processed liquid milk (1.93%), Diesel (1.78%) and Kerosene oil (1.75%).

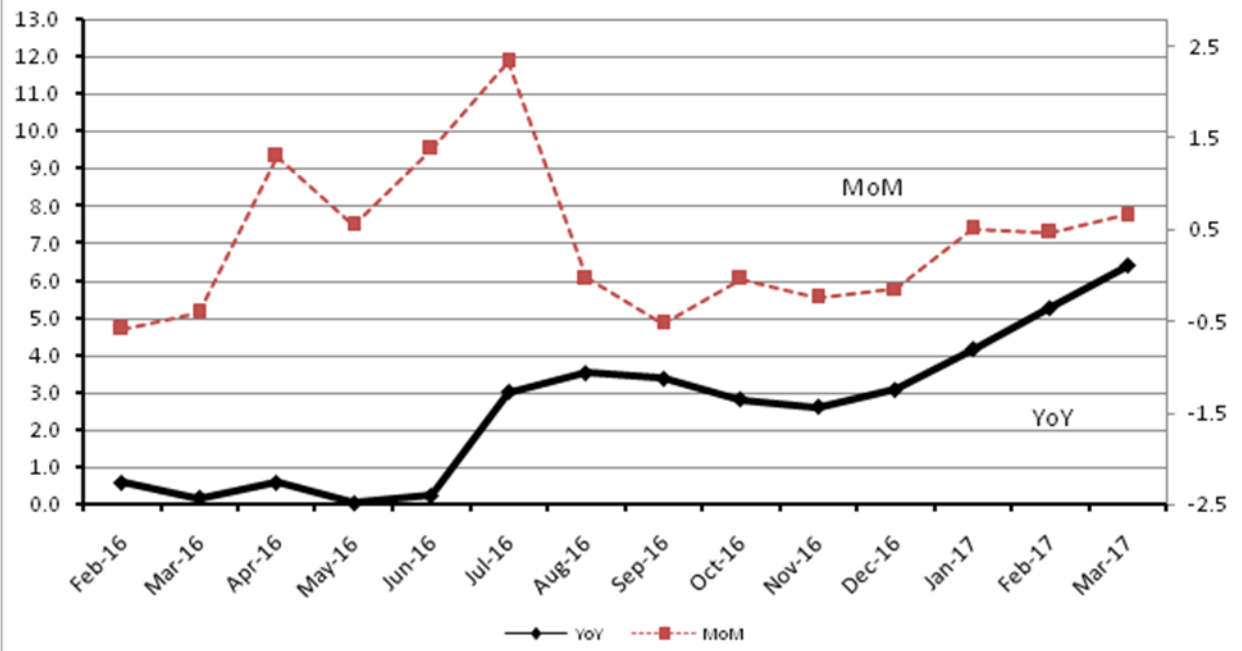
Decreased: Eggs (24.26%), Other Cereal Flour (7.06%), Sugar (4.96%), Pulses (3.39%), Stimulant & Spice Crops (2.74%), Dry Fruits (1.65%) and Readymade Garments (1.54%).

- Year-on-year** Top few commodities which varied from previous year i.e. March, 2016 are given below:-

Increased: Furnace Oil (103.52%), Potatoes (71.89%), Fish (38.87%), Glass Sheets (29.26%), Other Glass Articles (28.44%), Fiber Crops (27.53%), Poultry (25.60%), Unmanufactured Tobacco (20.81%), Cotton Yarn (16.34%), Motor Spirit (16.31%), Other Oil Seeds (15.70%), Diesel (15.62%), Lathe Machines (15.44%) and Tobacco Products (15.12%).

Decreased: Hides & Fur Skins (29.30%), Fertilizers (18.25%), Cultivators (13.24%), Coal (12.00%), Bajra (9.63%), Jowar (9.22%) and Stimulant & Spice Crops (7.21%).

Figure 4: WPI Inflation



Annexure A: Consumer Price Index Numbers by Commodity Groups & Commodities (2007-08=100)

| Item and Specification | Weight | Index Numbers | | | % Change in Mar 2017 over | |
|--------------------------------------|-----------------|---------------|---------------|---------------|---------------------------|----------------|
| | | Mar 17 | Feb 17 | Mar 16 | Feb 2017 | Mar 2016 |
| General | 100.0000 | 213.32 | 211.54 | 203.28 | + 0.84 | + 4.94 |
| Food and non-alcoholic Bevera | 34.8343 | 226.16 | 221.66 | 216.13 | + 2.03 | + 4.64 |
| 01 Wheat | 0.3477 | 208.99 | 207.84 | 208.84 | + 0.55 | + 0.07 |
| 02 Wheat Flour | 4.1648 | 213.15 | 213.15 | 216.95 | + 0.00 | - 1.75 |
| 03 Wheat Product | 0.0959 | 216.57 | 216.39 | 212.36 | + 0.08 | + 1.98 |
| 04 Besan | 0.1500 | 296.24 | 310.18 | 258.58 | - 4.49 | + 14.56 |
| 05 Rice | 1.5821 | 169.87 | 168.06 | 157.09 | + 1.08 | + 8.14 |
| 06 Cereals | 0.1563 | 253.81 | 253.65 | 248.03 | + 0.06 | + 2.33 |
| 07 Bakery & Confectionary | 1.1550 | 217.20 | 216.92 | 212.37 | + 0.13 | + 2.27 |
| 08 Nimco | 0.4574 | 250.97 | 250.62 | 244.62 | + 0.14 | + 2.60 |
| 09 Meat | 2.4303 | 270.81 | 268.26 | 260.17 | + 0.95 | + 4.09 |
| 10 Chicken | 1.3596 | 201.47 | 165.68 | 169.42 | + 21.60 | + 18.92 |
| 11 Fish | 0.2970 | 218.06 | 219.56 | 216.71 | - 0.68 | + 0.62 |
| 12 Milk Fresh | 6.6800 | 269.32 | 268.32 | 259.52 | + 0.37 | + 3.78 |
| 13 Milk Products | 0.6338 | 258.90 | 258.54 | 251.48 | + 0.14 | + 2.95 |
| 14 Milk Powder | 0.1129 | 234.74 | 236.18 | 235.07 | - 0.61 | - 0.14 |
| 15 Eggs | 0.4555 | 180.60 | 229.60 | 169.12 | - 21.34 | + 6.79 |
| 16 Mustard Oil | 0.0952 | 157.82 | 158.04 | 155.95 | - 0.14 | + 1.20 |
| 17 Cooking Oil | 1.7538 | 136.67 | 135.95 | 132.58 | + 0.53 | + 3.08 |
| 18 Vegetable Ghee | 2.0714 | 142.06 | 141.52 | 136.29 | + 0.38 | + 4.23 |
| 19 Dry Fruits | 0.2543 | 263.92 | 264.98 | 261.11 | - 0.40 | + 1.08 |
| 20 Fresh Fruits | 1.8649 | 253.63 | 225.40 | 221.54 | + 12.52 | + 14.48 |
| 21 Pulse Masoor | 0.2712 | 184.74 | 192.76 | 202.97 | - 4.16 | - 8.98 |
| 22 Pulse Moong | 0.2336 | 247.04 | 256.42 | 298.42 | - 3.66 | - 17.22 |
| 23 Pulse Mash (Washed) | 0.2098 | 279.33 | 289.59 | 348.96 | - 3.54 | - 19.95 |
| 24 Pulse Gram | 0.2361 | 294.15 | 319.93 | 267.42 | - 8.06 | + 10.00 |
| 25 Gram Whole | 0.1616 | 283.59 | 295.48 | 222.26 | - 4.02 | + 27.59 |
| 26 Beans | 0.0269 | 229.58 | 232.05 | 231.25 | - 1.06 | - 0.72 |
| 27 Potatoes | 0.4914 | 188.01 | 162.81 | 125.41 | + 15.48 | + 49.92 |
| 28 Onion | 0.5555 | 204.99 | 173.49 | 248.77 | + 18.16 | + 17.60 |
| 29 Tomatoes | 0.4634 | 213.35 | 126.67 | 93.51 | + 68.43 | + 128.16 |
| 30 Fresh Vegetables | 1.6157 | 225.89 | 221.50 | 203.43 | + 1.98 | + 11.04 |
| 31 Sugar | 1.0445 | 216.84 | 226.80 | 223.13 | - 4.39 | - 2.82 |
| 32 Gur | 0.0220 | 260.80 | 267.08 | 267.43 | - 2.35 | - 2.48 |
| 33 Honey | 0.0446 | 323.63 | 322.20 | 307.12 | + 0.44 | + 5.38 |
| 34 SweetMeat | 0.2483 | 247.44 | 246.37 | 239.96 | + 0.43 | + 3.12 |
| 35 Beverages | 1.1990 | 219.43 | 218.90 | 215.86 | + 0.24 | + 1.65 |
| 36 Jam, Tomato Ketchup & Pickles | 0.2454 | 217.05 | 216.89 | 211.82 | + 0.07 | + 2.47 |
| 37 Condiments | 0.2656 | 266.36 | 266.55 | 261.12 | - 0.07 | + 2.01 |
| 38 Spices | 0.5441 | 237.90 | 238.85 | 238.67 | - 0.40 | - 0.32 |
| 39 Tea | 0.8377 | 283.96 | 270.18 | 261.29 | + 5.10 | + 8.68 |
| Alcoholic Beverages, Tobacco | 1.4135 | 380.92 | 379.55 | 338.77 | + 0.36 | + 12.44 |
| 40 Cigarettes | 1.3906 | 383.20 | 381.80 | 340.48 | + 0.37 | + 12.55 |
| 41 Betel Leaves & Nuts | 0.0229 | 242.66 | 243.31 | 234.38 | - 0.27 | + 3.53 |
| Clothing and footwear | 7.5708 | 234.46 | 234.34 | 226.40 | + 0.05 | + 3.56 |
| 42 Cotton Cloth | 1.7286 | 226.99 | 226.39 | 218.51 | + 0.27 | + 3.88 |
| 43 Woolen Cloth | 0.8759 | 254.82 | 254.92 | 243.45 | - 0.04 | + 4.67 |
| 44 Readymade Garments | 0.9739 | 240.15 | 239.59 | 232.44 | + 0.23 | + 3.32 |
| 45 Woolen Readymade Garments | 0.3964 | 260.01 | 264.98 | 252.77 | - 1.88 | + 2.86 |
| 46 Hosiery | 0.5094 | 246.06 | 245.96 | 239.97 | + 0.04 | + 2.54 |
| 47 Dopatta | 0.4412 | 243.87 | 243.52 | 240.45 | + 0.14 | + 1.42 |
| 48 Cleaning and Laundry | 0.2110 | 261.93 | 261.12 | 252.25 | + 0.31 | + 3.84 |
| 49 Tailoring | 0.8840 | 311.57 | 310.54 | 292.19 | + 0.33 | + 6.63 |
| 50 Footwear | 1.5504 | 166.99 | 166.91 | 165.51 | + 0.05 | + 0.89 |

Annexure A: Consumer Price Index Numbers by Commodity Groups & Commodities (2007-08=100)

| Item and Specification | Weight | Index Numbers | | | % Change in Mar 2017 over | | |
|--------------------------------------|----------------|---------------|---------------|---------------|---------------------------|-------------|----------------|
| | | Mar 17 | Feb 17 | Mar 16 | Feb 2017 | Mar 2016 | |
| Housing, water, Elec., Gas an | 29.4149 | 194.44 | 194.45 | 185.48 | - | 0.01 | + 4.83 |
| 51 House Rent | 21.8149 | 185.86 | 185.86 | 174.32 | + | 0.00 | + 6.62 |
| 52 Construction Input Items | 0.5623 | 250.25 | 249.82 | 241.67 | + | 0.17 | + 3.55 |
| 53 Construction Wage Rates | 0.3331 | 235.79 | 235.67 | 225.24 | + | 0.05 | + 4.68 |
| 54 Water Supply | 0.4971 | 164.74 | 164.74 | 161.10 | + | 0.00 | + 2.26 |
| 55 Electricity | 4.3985 | 238.10 | 238.10 | 238.10 | + | 0.00 | + 0.00 |
| 56 Gas | 1.5756 | 158.08 | 158.08 | 158.08 | + | 0.00 | + 0.00 |
| 57 Kerosene Oil | 0.0057 | 198.79 | 198.47 | 191.37 | + | 0.16 | + 3.88 |
| 58 Firewood Whole | 0.2277 | 290.59 | 293.08 | 283.78 | - | 0.85 | + 2.40 |
| Furnishing and household equi | 4.2082 | 224.59 | 224.32 | 219.50 | + | 0.12 | + 2.32 |
| 59 Furniture | 0.3315 | 216.92 | 216.40 | 210.00 | + | 0.24 | + 3.30 |
| 60 Household Textiles | 0.6489 | 226.73 | 226.59 | 219.62 | + | 0.06 | + 3.24 |
| 61 Household Equipment | 0.5936 | 180.25 | 179.63 | 176.51 | + | 0.35 | + 2.12 |
| 62 Utensils | 0.3212 | 229.10 | 227.90 | 221.38 | + | 0.53 | + 3.49 |
| 63 Plastic Products | 0.2547 | 209.59 | 209.42 | 206.73 | + | 0.08 | + 1.38 |
| 64 Washing Soaps & Detergents | 0.7893 | 230.42 | 230.50 | 225.20 | - | 0.03 | + 2.32 |
| 65 Sewing Needle & Dr Cell | 0.1496 | 205.59 | 204.96 | 205.05 | + | 0.31 | + 0.26 |
| 66 Household Servant | 1.0432 | 249.98 | 249.98 | 245.77 | + | 0.00 | + 1.71 |
| 67 Marriage Hall Charges | 0.0762 | 245.66 | 244.86 | 238.96 | + | 0.33 | + 2.80 |
| Health | 2.1868 | 211.21 | 210.17 | 185.68 | + | 0.49 | + 13.75 |
| 68 Drugs & Medicines | 1.2667 | 184.27 | 183.60 | 152.54 | + | 0.36 | + 20.80 |
| 69 Medical Equipments | 0.0080 | 251.01 | 250.20 | 227.28 | + | 0.32 | + 10.44 |
| 70 Doctor (MBBS) Clinic Fee | 0.5904 | 277.47 | 275.73 | 255.23 | + | 0.63 | + 8.71 |
| 71 Medical Tests | 0.3217 | 194.69 | 193.51 | 187.50 | + | 0.61 | + 3.83 |
| Transport | 7.2023 | 175.69 | 174.75 | 168.25 | + | 0.54 | + 4.42 |
| 72 Motor Vehicles | 0.6630 | 172.91 | 172.13 | 165.19 | + | 0.45 | + 4.67 |
| 73 Motor Vehicle Accessories | 0.2439 | 213.27 | 213.44 | 220.51 | - | 0.08 | - 3.28 |
| 74 Motor Fuel | 3.0269 | 148.11 | 146.07 | 133.68 | + | 1.40 | + 10.79 |
| 75 Mechanical Service | 0.4552 | 229.92 | 229.62 | 223.78 | + | 0.13 | + 2.74 |
| 76 Motor Vehicle Tax | 0.1099 | 210.18 | 210.18 | 210.18 | + | 0.00 | + 0.00 |
| 77 Transport Services | 2.7034 | 193.34 | 193.34 | 191.93 | + | 0.00 | + 0.73 |
| Communication | 3.2198 | 132.69 | 131.58 | 130.74 | + | 0.84 | + 1.49 |
| 78 Postal Services | 0.0662 | 246.14 | 246.00 | 237.90 | + | 0.06 | + 3.46 |
| 79 Communication & Apparatus | 3.1536 | 130.31 | 129.17 | 128.49 | + | 0.88 | + 1.42 |
| Recreation and culture | 2.0227 | 197.14 | 196.88 | 194.71 | + | 0.13 | + 1.25 |
| 80 Recreation & Culture | 0.8634 | 129.62 | 129.61 | 128.83 | + | 0.01 | + 0.61 |
| 81 Text Books | 0.5706 | 292.41 | 292.41 | 290.62 | + | 0.00 | + 0.62 |
| 82 Newspapers | 0.1934 | 180.53 | 179.59 | 175.49 | + | 0.52 | + 2.87 |
| 83 Stationery | 0.3953 | 215.22 | 214.35 | 209.56 | + | 0.41 | + 2.70 |
| Education | 3.9431 | 233.98 | 233.96 | 210.99 | + | 0.01 | + 10.90 |
| 84 Education | 3.9431 | 233.98 | 233.96 | 210.99 | + | 0.01 | + 10.90 |
| Restaurants and hotels | 1.2286 | 271.02 | 269.63 | 261.80 | + | 0.52 | + 3.52 |
| 85 Readymade Food | 1.2286 | 271.02 | 269.63 | 261.80 | + | 0.52 | + 3.52 |
| Misc. goods and services | 2.7550 | 242.19 | 241.06 | 232.55 | + | 0.47 | + 4.15 |
| 86 Personal Care | 1.4935 | 224.06 | 221.97 | 213.45 | + | 0.94 | + 4.97 |
| 87 Cosmetics | 0.3853 | 203.77 | 203.29 | 198.43 | + | 0.24 | + 2.69 |
| 88 Blades | 0.0322 | 195.52 | 196.91 | 195.05 | - | 0.71 | + 0.24 |
| 89 Personal Equipments | 0.8440 | 293.59 | 293.78 | 283.36 | - | 0.06 | + 3.61 |

Annexure B: Wholesale Price Indices by Major Groups & Commodities

(2007-08=100)

| Item and Specification | Weight | Index Numbers | | | % Change in Mar 2017 over | |
|--|-----------------|---------------|---------------|---------------|---------------------------|----------------|
| | | Mar 17 | Feb 17 | Mar 16 | Feb 2017 | Mar 2016 |
| General | 100.0000 | 217.29 | 215.86 | 204.22 | + 0.66 | + 6.40 |
| Agriculture Forestry & Fisher | 25.7674 | 247.41 | 243.57 | 221.02 | + 1.58 | + 11.94 |
| 001 Wheat | 0.6297 | 215.36 | 215.69 | 218.68 | - 0.15 | - 1.52 |
| 002 Maize | 0.6764 | 188.80 | 187.42 | 193.96 | + 0.74 | - 2.66 |
| 003 Rice | 2.4413 | 158.39 | 157.46 | 143.85 | + 0.59 | + 10.11 |
| 004 Sorghum / Jowar | 0.0214 | 252.72 | 235.79 | 278.40 | + 7.18 | - 9.22 |
| 005 Millet / Bajra | 0.0374 | 166.48 | 168.08 | 184.22 | - 0.95 | - 9.63 |
| 006 Vegetables | 1.2441 | 228.79 | 211.37 | 209.51 | + 8.24 | + 9.20 |
| 007 Fresh Fruits | 1.5144 | 266.14 | 230.94 | 244.90 | + 15.24 | + 8.67 |
| 008 Dry Fruits | 0.2478 | 237.76 | 241.74 | 248.22 | - 1.65 | - 4.21 |
| 009 Cotton Seeds | 1.1511 | 273.72 | 267.94 | 253.39 | + 2.16 | + 8.02 |
| 010 Other Oil Seeds | 0.0722 | 181.57 | 181.39 | 156.93 | + 0.10 | + 15.70 |
| 011 Edible Roots / Potatoes | 0.2540 | 193.76 | 164.46 | 112.72 | + 17.82 | + <u>71.89</u> |
| 012 Stimulant & Spice Crops | 0.1634 | 218.25 | 224.40 | 235.21 | - 2.74 | - 7.21 |
| 013 Pulses | 0.4901 | 262.14 | 271.33 | 247.46 | - 3.39 | + 5.93 |
| 014 Sugar Crops | 1.0725 | 268.94 | 268.94 | 286.29 | + 0.00 | - 6.06 |
| 015 Fibre Crops | 5.3169 | 219.67 | 216.97 | 172.25 | + 1.24 | + 27.53 |
| 016 Unmanufactured Tobacco | 0.0742 | 277.89 | 277.88 | 230.02 | + 0.00 | + 20.81 |
| 017 Poultry | 0.5633 | 217.22 | 169.47 | 172.94 | + 28.18 | + 25.60 |
| 018 Raw Milk from Bovine Animals | 7.0279 | 266.07 | 266.07 | 255.42 | + 0.00 | + 4.17 |
| 019 Eggs | 0.5034 | 173.47 | 229.04 | 161.26 | - 24.26 | + 7.57 |
| 020 Raw Animal Materials / Wool | 0.0351 | 177.63 | 178.30 | 176.96 | - 0.38 | + 0.38 |
| 021 Hides & Fur Skins, Raw | 0.4834 | 106.49 | 105.67 | 150.63 | + 0.78 | - 29.30 |
| 022 Fuel Wood in Logs | 0.0179 | 279.63 | 277.01 | 266.30 | + 0.95 | + 5.01 |
| 023 Fish Live Fresh or Chilled | 1.7295 | 466.06 | 466.43 | 335.61 | - 0.08 | + 38.87 |
| Ores/Minerals, Elec., Gas & W | 12.0389 | 242.56 | 242.78 | 245.22 | - 0.09 | - 1.08 |
| 024 Coal not Agglomerated | 0.7508 | 155.29 | 155.29 | 176.47 | + 0.00 | - 12.00 |
| 025 Natural Gas Liquified | 5.7385 | 210.52 | 210.99 | 208.35 | - 0.22 | + 1.04 |
| 026 Salt & Pure Sodium Chloride | 0.0584 | 240.26 | 238.53 | 252.31 | + 0.73 | - 4.78 |
| 027 Electrical Energy | 5.4912 | 288.00 | 288.00 | 293.09 | + 0.00 | - 1.74 |
| Food, Beverages, Tobacco, Textil | 31.1122 | 227.09 | 226.40 | 214.66 | + 0.30 | + 5.79 |
| Food Products, Beverages & | 20.0718 | 238.45 | 237.24 | 228.30 | + 0.51 | + 4.45 |
| 028 Meat of Animals | 3.4559 | 283.49 | 279.49 | 268.99 | + 1.43 | + 5.39 |
| 029 Vegetables & Fruit Juice | 0.0058 | 223.21 | 223.21 | 201.36 | + 0.00 | + 10.85 |
| 030 Dried Fruits & Nuts | 0.1733 | 264.08 | 264.08 | 250.38 | + 0.00 | + 5.47 |
| 031 Fruit Juices | 0.3880 | 179.97 | 179.72 | 175.99 | + 0.14 | + 2.26 |
| 032 Vegetable Oils Refined | 1.9242 | 154.86 | 154.12 | 148.47 | + 0.48 | + 4.30 |
| 033 Vegetable Ghee | 1.5632 | 126.57 | 126.40 | 119.01 | + 0.13 | + 6.35 |
| 034 Oil Cakes | 0.9611 | 226.58 | 225.71 | 224.87 | + 0.39 | + 0.76 |
| 035 Processed Liquid Milk | 4.4437 | 262.24 | 257.27 | 247.57 | + 1.93 | + 5.93 |
| 036 Milk & Cream in Solid Form | 0.0316 | 218.15 | 219.31 | 219.09 | - 0.53 | - 0.43 |
| 037 Ice Cream | 0.0047 | 245.21 | 238.04 | 225.40 | + 3.01 | + 8.79 |
| 038 Dairy Products N.E.C | 0.0117 | 254.42 | 254.42 | 248.13 | + 0.00 | + 2.53 |
| 039 Wheat Flour | 2.3034 | 197.79 | 197.50 | 200.63 | + 0.15 | - 1.42 |
| 040 Other Cereal Flour | 0.0604 | 250.54 | 269.57 | 225.20 | - 7.06 | + 11.25 |
| 041 Sugar Refined | 1.7975 | 223.81 | 235.50 | 237.73 | - 4.96 | - 5.86 |
| 042 Chocolate | 0.0139 | 100.00 | 100.00 | 101.06 | + 0.00 | - 1.05 |
| 043 Sugar Confectionary | 0.0738 | 128.44 | 128.44 | 118.83 | + 0.00 | + 8.09 |
| 044 Coffee & Tea | 0.7303 | 254.52 | 244.86 | 238.86 | + 3.95 | + 6.56 |
| 045 Spices | 0.1449 | 190.42 | 190.46 | 189.77 | - 0.02 | + 0.34 |
| 046 Other Food Products | 0.0336 | 293.85 | 293.85 | 292.52 | + 0.00 | + 0.45 |
| 047 Mineral Water | 0.0207 | 198.57 | 198.57 | 194.37 | + 0.00 | + 2.16 |
| 048 Beverages | 0.6303 | 172.33 | 172.33 | 172.44 | + 0.00 | - 0.06 |
| 049 Tobacco Products | 1.2998 | 445.85 | 445.85 | 387.30 | + 0.00 | + 15.12 |
| Textiles & Apparels | 10.3289 | 206.89 | 207.18 | 189.28 | - 0.14 | + 9.30 |
| 050 Cotton Yarn | 5.2491 | 203.06 | 203.06 | 174.54 | + 0.00 | + 16.34 |
| 051 Nylon Yarn | 0.1719 | 143.99 | 143.99 | 147.08 | + 0.00 | - 2.10 |
| 052 Blended Yarn | 0.1689 | 182.33 | 181.06 | 175.44 | + 0.70 | + 3.93 |
| 053 Woven Fabrics | 0.0128 | 310.72 | 310.72 | 275.66 | + 0.00 | + 12.72 |
| 054 Cotton Fabrics | 0.6343 | 209.30 | 209.30 | 204.95 | + 0.00 | + 2.12 |
| 055 Other Fabrics | 1.1016 | 224.40 | 224.40 | 218.24 | + 0.00 | + 2.82 |
| 056 Silk & Reyon Fabrics | 0.7350 | 186.55 | 186.55 | 186.80 | + 0.00 | - 0.13 |
| 057 Towels | 0.1235 | 276.14 | 276.14 | 267.20 | + 0.00 | + 3.35 |
| 058 Blankets | 0.0029 | 247.52 | 247.38 | 243.93 | + 0.06 | + 1.47 |

| | | | | | | | | | |
|-----|--|----------------|---------------|---------------|---------------|---|-------------|---|--------------|
| 059 | Bed Sheets | 0.0913 | 256.07 | 256.07 | 256.29 | + | 0.00 | - | 0.09 |
| 060 | Quilts | 0.0019 | 203.79 | 203.79 | 201.47 | + | 0.00 | + | 1.15 |
| 061 | Woolen Carpets | 0.0383 | 196.43 | 196.43 | 181.55 | + | 0.00 | + | 8.20 |
| 062 | Synthetic Carpets | 0.0566 | 130.95 | 129.25 | 129.25 | + | 1.32 | + | 1.32 |
| 063 | Hosiery Products | 0.8832 | 241.83 | 241.83 | 222.52 | + | 0.00 | + | 8.68 |
| 064 | Readymade Garments | 1.0576 | 196.08 | 199.15 | 193.27 | - | 1.54 | + | 1.45 |
| | Leather Products | 0.7115 | 199.75 | 199.75 | 198.39 | + | 0.00 | + | 0.69 |
| 065 | Leather Without Hair | 0.2973 | 221.97 | 221.97 | 221.97 | + | 0.00 | + | 0.00 |
| 066 | Other Leather N.E.C | 0.2567 | 207.31 | 207.31 | 207.31 | + | 0.00 | + | 0.00 |
| 067 | Footweares | 0.1575 | 145.51 | 145.51 | 139.36 | + | 0.00 | + | 4.41 |
| | Other Transportable Goods | 22.3659 | 171.65 | 170.89 | 161.42 | + | 0.44 | + | 6.34 |
| 068 | Timber | 0.0165 | 226.13 | 225.41 | 220.36 | + | 0.32 | + | 2.62 |
| 069 | Printing Paper | 0.4279 | 165.63 | 165.63 | 161.82 | + | 0.00 | + | 2.35 |
| 070 | Hard Board | 0.1579 | 220.83 | 220.83 | 197.92 | + | 0.00 | + | 11.58 |
| 071 | Coke | 0.2797 | 163.45 | 163.45 | 163.45 | + | 0.00 | + | 0.00 |
| 072 | Motor Spirit | 1.5336 | 123.29 | 120.40 | 106.00 | + | 2.40 | + | 16.31 |
| 073 | Diesel Oil | 5.2664 | 155.81 | 153.09 | 134.76 | + | 1.78 | + | 15.62 |
| 074 | Kerosine Oil | 0.2151 | 117.12 | 115.11 | 115.11 | + | 1.75 | + | 1.75 |
| 075 | Furnace Oil | 3.2664 | 104.67 | 105.61 | 51.43 | - | 0.89 | + | <u>103.5</u> |
| | | | | | | | | | <u>2</u> |
| 076 | Mobil Oil | 0.7114 | 196.91 | 196.91 | 196.00 | + | 0.00 | + | 0.46 |
| 077 | Chemicals | 1.7720 | 170.99 | 170.99 | 182.47 | + | 0.00 | - | 6.29 |
| 078 | Dyeing Material | 0.1539 | 146.55 | 146.55 | 146.55 | + | 0.00 | + | 0.00 |
| 079 | Fertilizers | 2.8657 | 216.49 | 215.96 | 264.83 | + | 0.25 | - | 18.25 |
| 080 | Pesticides | 0.2763 | 304.43 | 304.43 | 312.37 | + | 0.00 | - | 2.54 |
| 081 | Insecticides | 0.1276 | 143.92 | 143.12 | 133.20 | + | 0.56 | + | 8.05 |
| 082 | Paints & Varnishes | 0.1916 | 294.51 | 296.43 | 295.36 | - | 0.65 | - | 0.29 |
| 083 | Medicines | 1.1428 | 174.85 | 173.83 | 156.79 | + | 0.59 | + | 11.52 |
| 084 | Soaps & Detergents | 0.8168 | 191.21 | 191.29 | 182.03 | - | 0.04 | + | 5.04 |
| 085 | Auto Tyres | 0.2703 | 177.07 | 177.07 | 184.65 | + | 0.00 | - | 4.11 |
| 086 | Plastic Products | 0.4550 | 225.88 | 225.73 | 226.58 | + | 0.07 | - | 0.31 |
| 087 | Glass sheets | 0.2089 | 298.97 | 297.20 | 231.30 | + | 0.60 | + | 29.26 |
| 088 | Other Glass Articles | 0.1635 | 312.91 | 307.95 | 243.63 | + | 1.61 | + | 28.44 |
| 089 | Ceramics & Sanitary Fixture | 0.0244 | 233.92 | 234.18 | 227.51 | - | 0.11 | + | 2.82 |
| 090 | Bricks, Blocks & Tiles | 0.1566 | 220.98 | 219.99 | 217.05 | + | 0.45 | + | 1.81 |
| 091 | Cement | 1.8145 | 216.71 | 218.23 | 206.40 | - | 0.70 | + | 5.00 |
| 092 | Bed Foam | 0.0006 | 170.83 | 167.17 | 167.67 | + | 2.19 | + | 1.88 |
| 093 | Matches | 0.0505 | 165.53 | 165.53 | 162.62 | + | 0.00 | + | 1.79 |
| | Metal Product, Machinery & Eq | 8.7156 | 175.44 | 174.49 | 170.45 | + | 0.54 | + | 2.93 |
| 094 | Pig Iron | 0.0593 | 128.97 | 128.97 | 128.97 | + | 0.00 | + | 0.00 |
| 095 | Steel Bar & Sheets | 1.4022 | 133.96 | 129.50 | 123.70 | + | 3.44 | + | 8.29 |
| 096 | Pipe Fittings | 0.0780 | 215.29 | 214.33 | 193.06 | + | 0.45 | + | 11.51 |
| 097 | Steel Products | 0.3879 | 177.48 | 177.41 | 176.80 | + | 0.04 | + | 0.38 |
| 098 | Engines & Motors | 0.0046 | 116.98 | 116.98 | 109.24 | + | 0.00 | + | 7.09 |
| 099 | Vacuum Pumps | 0.0155 | 123.69 | 123.69 | 114.95 | + | 0.00 | + | 7.60 |
| 100 | Air Conditioners | 0.0049 | 200.10 | 200.10 | 201.18 | + | 0.00 | - | 0.54 |
| 101 | Cultivators | 0.0551 | 190.66 | 190.66 | 219.76 | + | 0.00 | - | 13.24 |
| 102 | Chuff Cutter | 0.1293 | 153.46 | 153.46 | 149.20 | + | 0.00 | + | 2.86 |
| 103 | Tractors | 0.0028 | 201.75 | 201.75 | 205.43 | + | 0.00 | - | 1.79 |
| 104 | Lathe Machines | 0.0525 | 241.06 | 241.06 | 208.81 | + | 0.00 | + | 15.44 |
| 105 | Concrete Mixture | 0.0107 | 138.83 | 138.83 | 138.83 | + | 0.00 | + | 0.00 |
| 106 | Fridge,WashM,SewM,Fans,Iron | 1.1645 | 208.84 | 207.15 | 199.37 | + | 0.82 | + | 4.75 |
| 107 | Electric Wires | 0.0912 | 204.51 | 204.51 | 195.19 | + | 0.00 | + | 4.77 |
| 108 | Lighting Equipments | 1.4431 | 170.73 | 170.73 | 167.30 | + | 0.00 | + | 2.05 |
| 109 | Radio & Television | 0.1843 | 140.42 | 140.42 | 126.49 | + | 0.00 | + | 11.01 |
| 110 | Motor Vehicles | 0.0244 | 191.39 | 191.39 | 185.25 | + | 0.00 | + | 3.31 |
| 111 | Motorcycles | 0.2570 | 125.89 | 125.89 | 125.89 | + | 0.00 | + | 0.00 |
| 112 | Bicycles | 3.3483 | 187.65 | 187.65 | 185.63 | + | 0.00 | + | 1.09 |