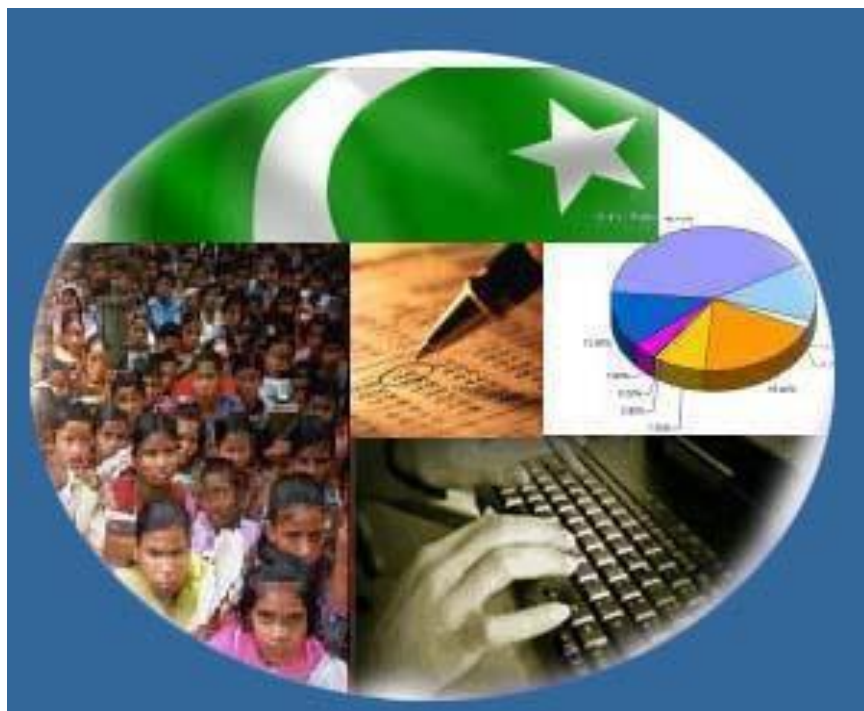




Monthly Review on Price Indices



April, 2017
(Base 2007-08)

Government of Pakistan
Statistics Division
Pakistan Bureau of Statistics
Islamabad

Inflation in Brief

1. CPI inflation General increased by 4.8% on year-on-year basis in April 2017 as compared to an increase of 4.9% in the previous month and 4.2% in April 2016. On month-on-month basis, it increased by 1.4% in April 2017 as compared to an increase of 0.8% in the previous month and an increase of 1.5% in April 2016.
2. Core inflation measured by non-food non-energy CPI (Core NFNE) increased by 5.5% on (YoY) basis in April 2017 as compared to increase of 5.3% in the previous month and 4.4% in April 2016. On (MoM) basis, it increased by 1.3% in April 2017 as compared to increase of 0.1% in previous month, and an increase of 1.1% in corresponding month of last year i.e. April 2016.
3. Core inflation, measured by 20% weighted trimmed mean CPI (Core Trimmed) increased by 4.8% on (YoY) basis in April 2017 as compared to 4.5% in the previous month and by 3.8% in April 2016. On (MoM) basis, it increased by 0.8% in April 2017 as compared to an increase of 0.2% in the previous month and an increase of 0.6% in corresponding month of last year i.e. April 2016.
4. SPI inflation on YoY increased by 2.3% in April 2017 as compared to an increase of 3.1% a month earlier and an increase of 2.9% in April 2016. On MoM basis, it decreased by 0.9% in April 2017 as compared to an increase of 1.8% a month earlier and a decrease of 0.1% in April 2016.
5. WPI inflation on YoY basis increased by 6.0% in April 2017 as compared to an increase of 6.4% a month earlier and an increase of 0.6% in April 2016. WPI inflation on MoM basis increased by 0.9% in April 2017 as compared to an increase of 0.7% a month earlier and an increase of 1.3% in corresponding month of last year i.e. April 2016.
6. Figures 1 and 2 show graphically the data of Table 1. Table 1.1 shows "Period Average" and "YoY" percent changes in indices of three years.

Table 1: Inflation (%) (Base 2007-08)

Period	CPI						Core Inflation				SPI**		WPI	
	General		Food		Non-food		NFNE*		Trimmed		YoY	MoM	YoY	MoM
	YoY	MoM	YoY	MoM	YoY	MoM	YoY	MoM	YoY	MoM				
Mar 16	3.9	0.1	3.7	0.5	4.1	-0.1	4.7	0.2	3.8	0.2	3.5	-0.2	0.2	-0.4
April 16	4.2	1.5	4.7	2.4	3.8	1.0	4.4	1.1	3.8	0.6	2.9	-0.1	0.6	1.3
May 16	3.2	-0.2	2.1	-0.7	3.9	0.2	4.6	0.2	3.6	0.2	0.6	-1.0	0.0	0.6
June 16	3.2	0.6	2.3	1.4	3.8	0.1	4.6	0.1	3.7	0.2	0.7	1.1	0.2	1.4
July 16	4.1	1.3	4.7	2.5	3.7	0.5	4.5	0.6	3.6	0.5	1.7	1.3	3.0	2.3
Aug 16	3.6	-0.3	3.4	-0.9	3.7	0.2	4.6	0.2	3.5	0.1	2.2	0.2	3.5	0.0
Sep 16	3.9	0.2	4.0	0.1	3.8	0.2	4.8	0.3	3.7	0.1	1.8	0.1	3.4	-0.5
Oct 16	4.2	0.8	4.4	0.8	4.1	0.8	5.2	0.9	3.8	0.6	1.3	0.7	2.8	-0.0
Nov 16	3.8	0.2	3.3	0.2	4.2	0.2	5.3	0.2	3.8	0.2	0.6	0.3	2.6	-0.2
Dec 16	3.7	-0.7	3.0	-1.9	4.2	0.2	5.2	0.1	3.7	0.1	0.5	-0.8	3.1	-0.1
Jan 17	3.7	0.2	2.6	-1.0	4.4	1.0	5.4	1.1	3.8	0.6	0.4	-0.8	4.2	0.5
Feb 17	4.2	0.3	3.7	0.3	4.6	0.3	5.3	0.2	4.1	0.2	1.1	0.2	5.3	0.5
Mar 17	4.9	0.8	5.0	1.9	4.9	0.1	5.3	0.1	4.5	0.2	3.1	1.8	6.4	0.7
Apr 17	4.8	1.4	4.4	1.7	5.1	1.2	5.5	1.3	4.8	0.8	2.3	-0.9	6.0	0.9

*NFNE is non-food non-energy, ** SPI for quintile 1. Digits 0.0* are due to rounding off.

Table 1.1 : Period Average and YoY % Changes of Indices (Base 2007-08)

Index	Averages July-April % Changes			April over April % Changes		
	2016-17	2015-16	2014-15	2017	2016	2015
CPI	4.09	2.79	4.81	4.78	4.17	2.11
SPI	1.51	1.44	1.86	2.30	2.91	-1.57
WPI	4.00	-1.30	0.03	5.97	0.59	-2.94

Figure 2: CPI Inflation MoM, Special Indices

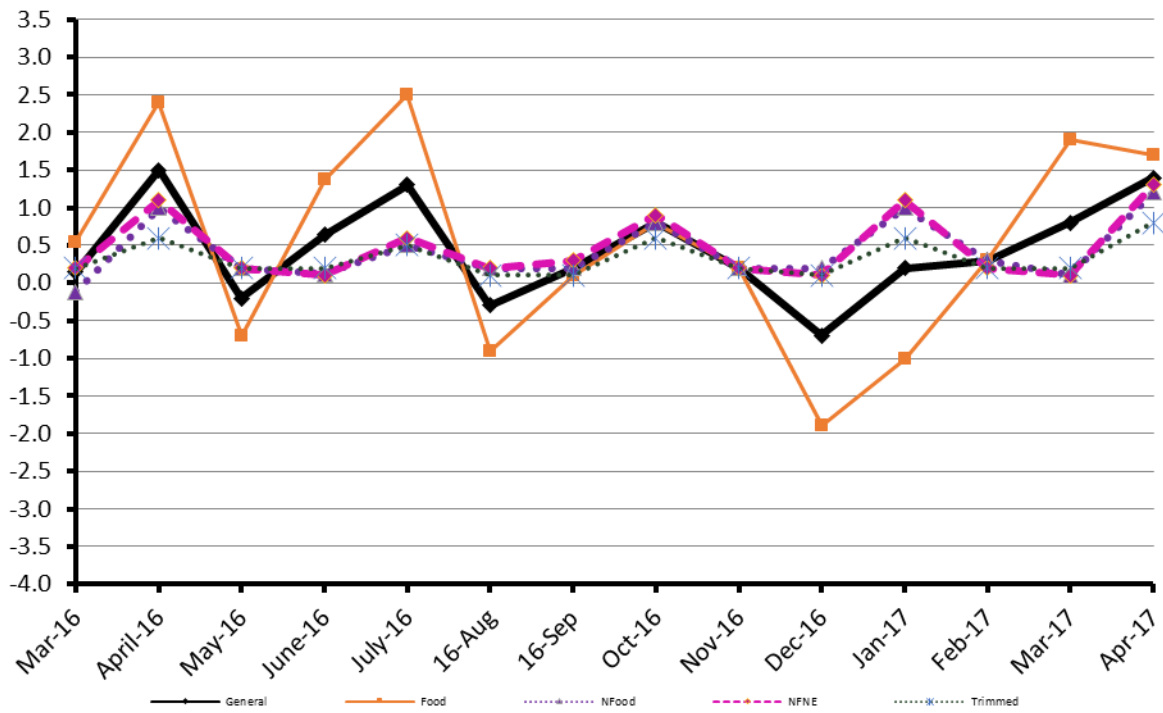
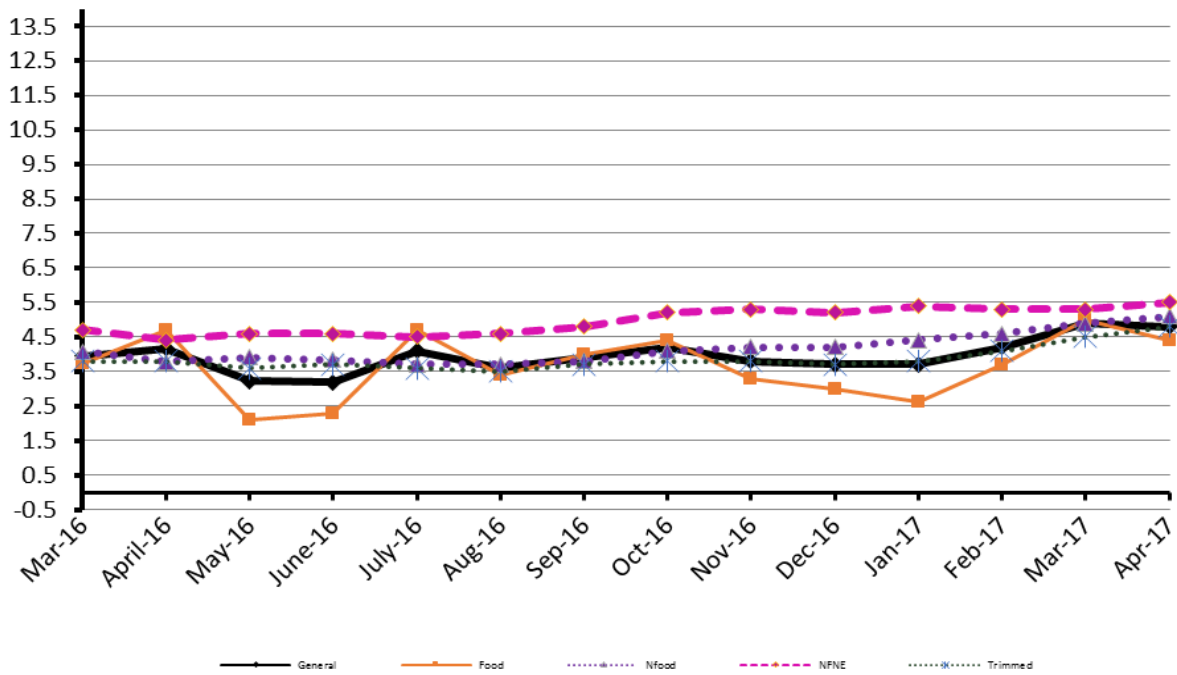


Figure 1: CPI Inflation YoY, Special Indices



II. Consumer Price Index (CPI)

The Consumer Price Index of April 2017, has increased by 1.40% over March 2017 and increased by 4.78% over corresponding month of the last year i.e. April 2016.

Table 2 : Consumer Price Index by Group of Commodities and Services (Base 2007-08)

No	Group	Group Weight (%)	Indices			% Change April 2017 Over		Impact (In % points) April 2017 Over	
			Apr 2017	Mar 2017	Apr 2016	Mar 2017	Apr 2016	Mar 2017	Apr 2016
	General	100.00	216.30	213.32	206.43	1.40	4.78	1.40	4.78
1.	Food & Non-alcoholic Bev.	34.83	230.25	226.16	221.59	1.81	3.90	0.67	1.46
	<i>Non-perishable Food Items</i>	29.84	226.72	225.68	221.60	0.46	2.31	0.15	0.74
	<i>Perishable Food Items</i>	4.99	251.31	229.04	221.58	9.72	13.42	0.52	0.72
2.	Alcoholic Bev. & Tobacco	1.41	382.78	380.92	344.10	0.49	11.24	0.01	0.26
3.	Clothing & Footwear	7.57	235.61	234.46	227.87	0.49	3.40	0.04	0.28
4.	Housing, Water, Electricity, Gas & Fuels	29.41	196.62	194.44	187.08	1.12	5.10	0.30	1.36
5.	Furnishing & Household Equipment Maintenance	4.21	224.95	224.59	220.09	0.16	2.21	0.01	0.10
6.	Health	2.19	212.43	211.21	187.29	0.58	13.42	0.01	0.27
7.	Transport	7.20	176.33	175.69	169.33	0.36	4.13	0.02	0.24
8.	Communication	3.22	132.87	132.69	130.77	0.14	1.61	0.00	0.03
9.	Recreation & Culture	2.02	196.02	197.14	195.68	-0.57	0.17	-0.01	0.00
10.	Education	3.94	249.20	233.98	221.48	6.50	12.52	0.28	0.53
11.	Restaurants & Hotels	1.23	275.88	271.02	261.89	1.79	5.34	0.03	0.08
12.	Miscellaneous	2.76	244.71	242.19	232.97	1.04	5.04	0.03	0.16

Main contributors to month-on-month and year-on-year percentage changes are given below and detail is given in Annexure A.

- Month-on-month** Top few commodities which varied from previous month are given below:-

Food Items Increased: Fresh Vegetables (20.64%), Fresh Fruits (8.74%), Chicken (3.34%), Potatoes (2.81%), and Rice (2.55%).

Decreased: Tomatoes (5.57%), Onion (2.77%), Wheat (2.65%), Pulse Gram (2.05%), and Pulse Masoor (1.49%).

Non-food Items Increased: Education (6.5%), Personal Equipments (2.08%), Water Supply (2.08%), and House rent (1.52%).

Decreased: Text Books (1.51%).

- Year-on-Year:** Top few commodities which varied from previous year i.e. April 2016 are given below:-

Food Items Increased: Potatoes (55.05%), Tomatoes (34.31%), Gram Whole (20.76%), Fresh Vegetables (17.18%), Eggs (13.87%), Rice (12.01%), Tea (11.56%), Besan (11.49%), Cigarettes (11.32%) and Fresh Fruits (9.75%).

Decreased: Pulse Mash (22.67%), Pulse Moong (18.61%), Onion (15.01%), Pulse Masoor (11.16%), and Chicken (6.01%).

Non-food Items Increased: Drugs & Medicines (20.77%), Education (12.52%), Motor Fuel (10.29%), Medical Equipments (7.92%), Doctor (MBBS) Clinic Fee (7.87%), Tailoring (6.99%), House Rent (6.94%), and Personal Equipments (5.53%).

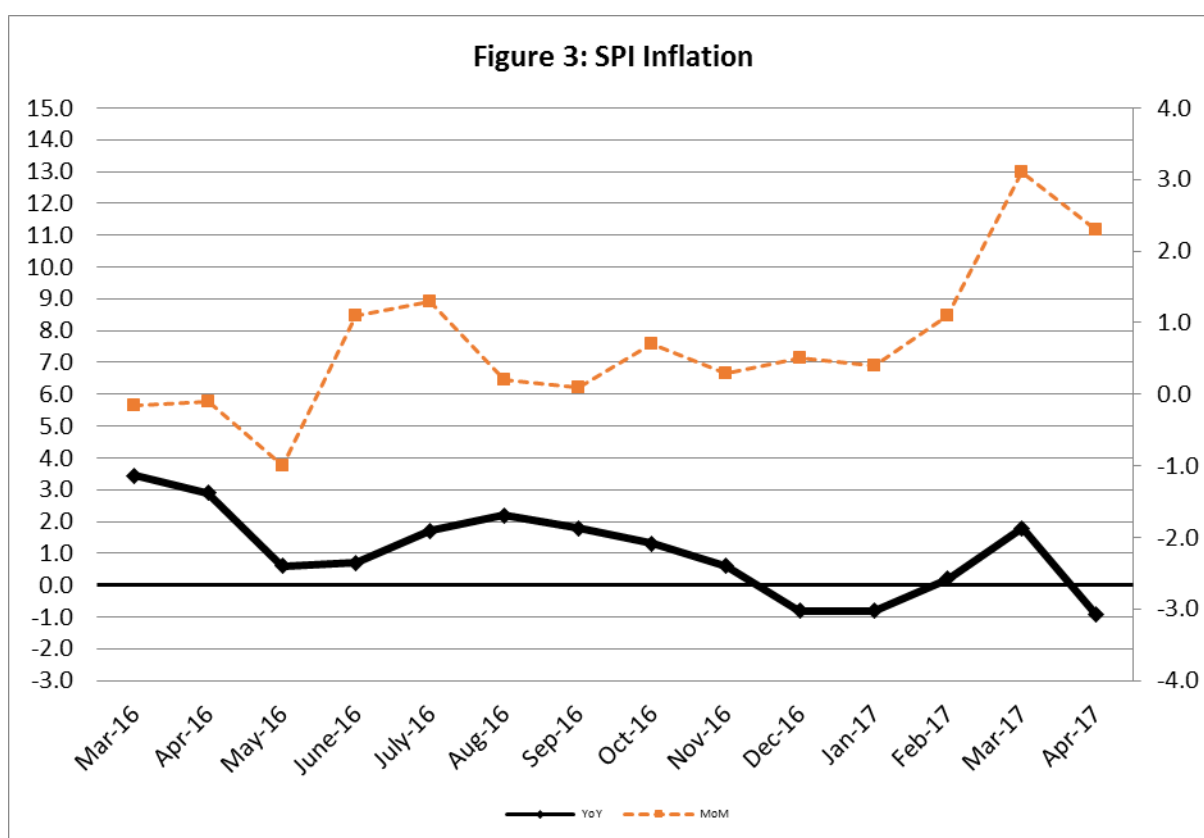
Decreased: Motor Vehicle Accessories (2.03%) and Text Books (1.49%).

III. Sensitive Price Indicator

Quintile-wise percentage changes YoY and MoM are given below in Table 3. The series from March 2017 to April 2017 is also graphed below in Figure 3.

Table 3: Sensitive Price Indicator (Base 2007-08)					
Quintiles	Indices			% Change April 2017 over	
	Apr 2017	Mar 2017	Apr 2016	Mar 2017	Apr 2016
1	211.31	213.26	206.55	-0.91	2.30
2	219.28	221.11	214.11	-0.83	2.41
3	220.76	222.53	215.19	-0.80	2.59
4	226.03	227.66	219.78	-0.72	2.84
5	223.82	225.07	216.70	-0.56	3.29
Combined	222.07	223.62	215.88	-0.69	2.87

Table 3.1 : Weekly Percentage Change of SPI During April-17					
Quintiles	% Change with Previous week				
	6 th Apr-2017	13 th Apr-2017	20 th Apr-2017	27 th Apr-2017	
Quantile 1	-0.47	-0.93	-0.83	-0.49	
Combined	-0.48	-0.82	-0.75	-0.40	



IV. Wholesale Price Index

The Wholesale Price Index for April, 2017 increased by 0.89% over March, 2017. It increased by 5.97% over the corresponding month of the last year. YoY and MoM movements, from March, 2016 to April, 2017 are also graphed below in Figure 4.

Table 4 : Wholesale Price Index by Group of Commodities (Base 2007-08)									
No.	Group	Group Weight (%)	Indices			% Change April, 2017 over		Impact (in %age points) April, 2017 over	
			April 2017	Mar 2017	April 2016	Mar 2017	April 2016	Mar 2017	April 2016
	General	100.00	219.22	217.29	206.87	0.89	5.97	0.89	5.97
1.	Agriculture, Forestry & Fishery Products	25.77	254.52	247.41	229.78	2.87	10.77	0.84	3.08
2.	Ores & Minerals, Electricity, Gas & Water	12.04	242.28	242.56	244.59	-0.12	-0.94	-0.02	-0.13
3.	Food Products, Beverages & Tobacco, Textiles, Apparel & Leather Products	31.11	227.31	227.09	214.90	0.10	5.77	0.03	1.87
	i. Food Products, Bev. & Tobacco	20.07	238.72	238.45	228.66	0.11	4.40	0.03	0.98
	ii. Textiles and Apparel	10.33	207.05	206.89	189.28	0.08	9.39	0.01	0.89
	iii. Leather Products	0.71	199.75	199.75	198.73	0.00	0.51	0.00	0.00
4.	Other Transportable Goods except Metal Products, Machinery & Equipment	22.37	171.61	171.65	162.91	-0.02	5.34	0.00	0.94
5.	Metal Products, Machinery & Equipment	8.72	176.25	175.44	171.22	0.46	2.94	0.03	0.21

Main contributors to month-on-month and year-on-year percentage changes are given below and detail is given in Annexure B.

1. **Month-on-month** Top few commodities which varied from previous month i.e. March, 2017 are given below:-

Increased: Vegetables (35.13%), Fresh Fruits (13.68%), Printing paper (4.78%), Maize (3.89%), Matches (3.52%), Poultry (2.84%), Timber (2.39%), Fridge, Washing machine etc. (2.37%), Rice (1.94%), Mobil oil (1.82%), Pulses (1.73%) and Potatoes (1.54%).

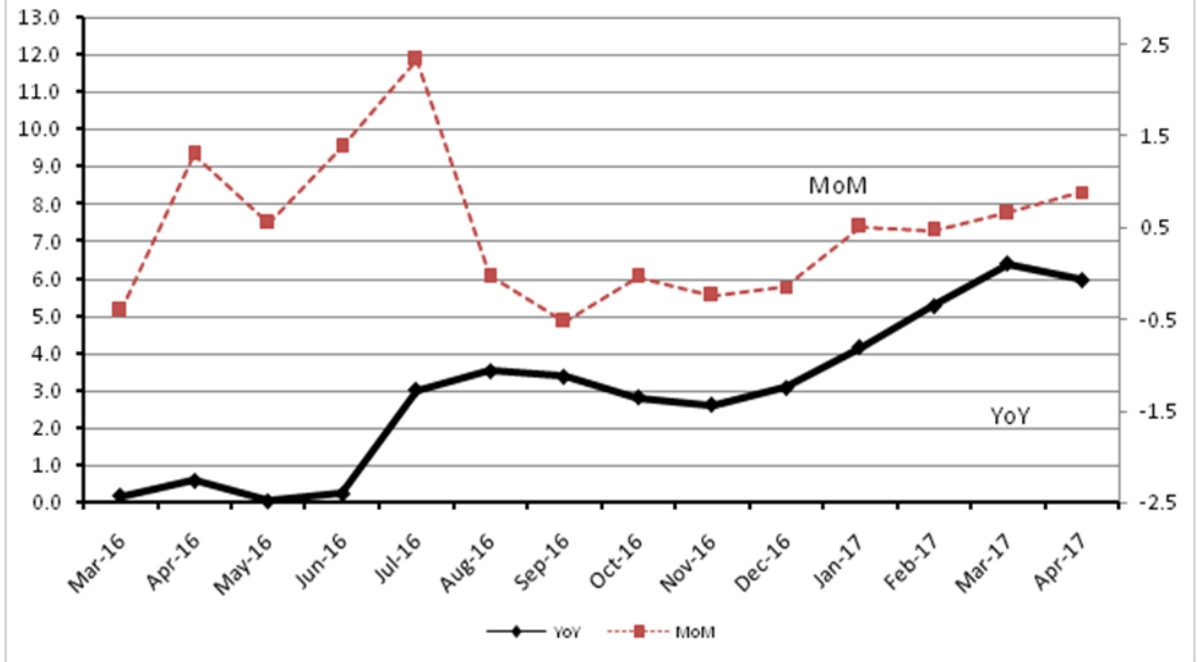
Decreased: Furnace oil (5.81%), Wheat (3.29%), Other cereal flour (3.18%), Stimulant & Spice Crops (2.97%), Eggs (2.24%), Wheat flour (1.43%), Insecticides (1.32%) and Sugar (1.06%).

2. **Year-on-year** Top few commodities which varied from previous year i.e. April, 2016 are given below:-

Increased: Potatoes (89.03%), Furnace Oil (68.30%), Other Glass Articles (30.21%), Glass Sheets (29.26%), Fish (26.48%), Fiber Crops (25.46%), Unmanufactured Tobacco (21.09%), Cotton Yarn (16.92%), Lathe Machines (15.44%) Motor Spirit (15.15%), Diesel (15.12%), and Tobacco Products (14.32%).

Decreased: Hides & Fur Skins (29.01%), Jowar (17.05%) Fertilizers (16.82%), Cultivators (13.24%), Bajra (9.73%), Stimulant & Spice Crops (9.66%) and Coal (7.91%).

Figure 4: WPI Inflation



Annexure A: Consumer Price Index Numbers by Commodity Groups & Commodities (2007-08=100)

Item and Specification	Weight	Index Numbers			% Change in Apr 2017 over	
		Apr 17	Mar 17	Apr 16	Mar 2017	Apr 2016
General	100.0000	216.30	213.32	206.43	+ 1.40	+ 4.78
Food and non-alcoholic Bevera	34.8343	230.25	226.16	221.59	+ 1.81	+ 3.91
01 Wheat	0.3477	203.46	208.99	199.84	- 2.65	+ 1.81
02 Wheat Flour	4.1648	211.07	213.15	213.80	- 0.98	- 1.28
03 Wheat Product	0.0959	216.66	216.57	214.44	+ 0.04	+ 1.04
04 Besan	0.1500	296.79	296.24	266.21	+ 0.19	+ 11.49
05 Rice	1.5821	174.21	169.87	155.53	+ 2.55	+ 12.01
06 Cereals	0.1563	254.41	253.81	248.02	+ 0.24	+ 2.58
07 Bakery & Confectionary	1.1550	217.62	217.20	212.32	+ 0.19	+ 2.50
08 Nimco	0.4574	253.75	250.97	245.22	+ 1.11	+ 3.48
09 Meat	2.4303	271.99	270.81	260.33	+ 0.44	+ 4.48
10 Chicken	1.3596	208.20	201.47	221.51	+ 3.34	- 6.01
11 Fish	0.2970	217.64	218.06	220.79	- 0.19	- 1.43
12 Milk Fresh	6.6800	271.51	269.32	260.36	+ 0.81	+ 4.28
13 Milk Products	0.6338	260.42	258.90	251.36	+ 0.59	+ 3.60
14 Milk Powder	0.1129	234.56	234.74	235.13	- 0.08	- 0.24
15 Eggs	0.4555	179.91	180.60	157.99	- 0.38	+ 13.87
16 Mustard Oil	0.0952	157.82	157.82	153.28	+ 0.00	+ 2.96
17 Cooking Oil	1.7538	137.69	136.67	132.28	+ 0.75	+ 4.09
18 Vegetable Ghee	2.0714	143.12	142.06	137.14	+ 0.75	+ 4.36
19 Dry Fruits	0.2543	266.78	263.92	263.06	+ 1.08	+ 1.41
20 Fresh Fruits	1.8649	275.79	253.63	251.28	+ 8.74	+ 9.75
21 Pulse Masoor	0.2712	181.99	184.74	204.86	- 1.49	- 11.16
22 Pulse Moong	0.2336	244.75	247.04	300.71	- 0.93	- 18.61
23 Pulse Mash (Washed)	0.2098	279.70	279.33	361.70	+ 0.13	- 22.67
24 Pulse Gram	0.2361	288.13	294.15	276.99	- 2.05	+ 4.02
25 Gram Whole	0.1616	283.71	283.59	234.94	+ 0.04	+ 20.76
26 Beans	0.0269	231.55	229.58	233.02	+ 0.86	- 0.63
27 Potatoes	0.4889	193.29	188.01	124.66	+ 2.81	+ 55.05
28 Onion	0.5530	199.32	204.99	234.53	- 2.77	- 15.01
29 Tomatoes	0.4609	201.46	213.35	150.00	- 5.57	+ 34.31
30 Fresh Vegetables	1.6232	272.52	225.89	232.56	+ 20.64	+ 17.18
31 Sugar	1.0445	216.60	216.84	226.87	- 0.11	- 4.53
32 Gur	0.0220	258.74	260.80	264.70	- 0.79	- 2.25
33 Honey	0.0446	331.39	323.63	307.78	+ 2.40	+ 7.67
34 SweetMeat	0.2483	247.92	247.44	239.96	+ 0.19	+ 3.32
35 Beverages	1.1990	220.59	219.43	217.77	+ 0.53	+ 1.29
36 Jam, Tomato Ketchup & Pickles	0.2454	217.10	217.05	213.44	+ 0.02	+ 1.71
37 Condiments	0.2656	267.70	266.36	263.03	+ 0.50	+ 1.78
38 Spices	0.5441	236.82	237.90	239.67	- 0.45	- 1.19
39 Tea	0.8377	286.87	283.96	257.15	+ 1.02	+ 11.56
Alcoholic Beverages, Tobacco	1.4135	382.78	380.92	344.10	+ 0.49	+ 11.24
40 Cigarettes	1.3906	385.02	383.20	345.88	+ 0.47	+ 11.32
41 Betel Leaves & Nuts	0.0229	246.79	242.66	236.22	+ 1.70	+ 4.47
Clothing and footwear	7.5708	235.61	234.46	227.87	+ 0.49	+ 3.40
42 Cotton Cloth	1.7286	228.50	226.99	223.11	+ 0.67	+ 2.42
43 Woolen Cloth	0.8759	255.67	254.82	243.14	+ 0.33	+ 5.15
44 Readymade Garments	0.9739	243.07	240.15	234.60	+ 1.22	+ 3.61
45 Woolen Readymade Garments	0.3964	258.64	260.01	252.74	- 0.53	+ 2.33
46 Hosiery	0.5094	246.51	246.06	240.25	+ 0.18	+ 2.61
47 Dopatta	0.4412	244.46	243.87	239.49	+ 0.24	+ 2.08
48 Cleaning and Laundry	0.2110	265.87	261.93	252.29	+ 1.50	+ 5.38
49 Tailoring	0.8840	313.43	311.57	292.96	+ 0.60	+ 6.99
50 Footwear	1.5504	167.05	166.99	166.17	+ 0.04	+ 0.53
Housing, water, Elec., Gas an	29.4149	196.62	194.44	187.08	+ 1.12	+ 5.10
51 House Rent	21.8149	188.68	185.86	176.44	+ 1.52	+ 6.94
52 Construction Input Items	0.5623	250.55	250.25	242.89	+ 0.12	+ 3.15
53 Construction Wage Rates	0.3331	237.79	235.79	226.24	+ 0.85	+ 5.11
54 Water Supply	0.4971	168.16	164.74	161.10	+ 2.08	+ 4.38
55 Electricity	4.3985	238.10	238.10	238.10	+ 0.00	+ 0.00
56 Gas	1.5756	158.08	158.08	158.08	+ 0.00	+ 0.00
57 Kerosene Oil	0.0057	199.32	198.79	194.05	+ 0.27	+ 2.72

Annexure A: Consumer Price Index Numbers by Commodity Groups & Commodities (2007-08=100)

Item and Specification	Weight	Index Numbers			% Change in Apr 2017 over	
		Apr 17	Mar 17	Apr 16	Mar 2017	Apr 2016
58 Firewood Whole	0.2277	290.56	290.59	283.25	- 0.01	+ 2.58
<i>Furnishing and household equi</i>	4.2082	224.95	224.59	220.09	+ 0.16	+ 2.21
59 Furniture	0.3315	217.24	216.92	210.33	+ 0.15	+ 3.29
60 Household Textiles	0.6489	226.57	226.73	219.15	- 0.07	+ 3.39
61 Household Equipment	0.5936	180.69	180.25	177.64	+ 0.24	+ 1.72
62 Utensils	0.3212	230.57	229.10	222.55	+ 0.64	+ 3.60
63 Plastic Products	0.2547	210.32	209.59	206.90	+ 0.35	+ 1.65
64 Washing Soaps & Detergents	0.7893	231.03	230.42	226.13	+ 0.26	+ 2.17
65 Sewing Needle & Dr Cell	0.1496	206.22	205.59	208.24	+ 0.31	- 0.97
66 Household Servant	1.0432	249.98	249.98	246.17	+ 0.00	+ 1.55
67 Marriage Hall Charges	0.0762	245.66	245.66	238.96	+ 0.00	+ 2.80
<i>Health</i>	2.1868	212.43	211.21	187.29	+ 0.58	+ 13.42
68 Drugs & Medicines	1.2667	184.57	184.27	152.83	+ 0.16	+ 20.77
69 Medical Equipments	0.0080	251.01	251.01	232.59	+ 0.00	+ 7.92
70 Doctor (MBBS) Clinic Fee	0.5904	280.95	277.47	260.45	+ 1.25	+ 7.87
71 Medical Tests	0.3217	195.45	194.69	187.54	+ 0.39	+ 4.22
<i>Transport</i>	7.2023	176.33	175.69	169.33	+ 0.36	+ 4.13
72 Motor Vehicles	0.6630	173.26	172.91	165.22	+ 0.20	+ 4.87
73 Motor Vehicle Accessories	0.2439	212.27	213.27	216.66	- 0.47	- 2.03
74 Motor Fuel	3.0269	149.40	148.11	135.46	+ 0.87	+ 10.29
75 Mechanical Service	0.4552	230.12	229.92	223.78	+ 0.09	+ 2.83
76 Motor Vehicle Tax	0.1099	210.18	210.18	210.18	+ 0.00	+ 0.00
77 Transport Services	2.7034	193.56	193.34	193.15	+ 0.11	+ 0.21
<i>Communication</i>	3.2198	132.87	132.69	130.77	+ 0.14	+ 1.61
78 Postal Services	0.0662	249.16	246.14	238.97	+ 1.23	+ 4.26
79 Communication & Apparatus	3.1536	130.43	130.31	128.50	+ 0.09	+ 1.50
<i>Recreation and culture</i>	2.0227	196.02	197.14	195.68	- 0.57	+ 0.17
80 Recreation & Culture	0.8634	129.72	129.62	129.09	+ 0.08	+ 0.49
81 Text Books	0.5706	287.98	292.41	292.33	- 1.51	- 1.49
82 Newspapers	0.1934	181.01	180.53	175.49	+ 0.27	+ 3.15
83 Stationery	0.3953	215.42	215.22	211.49	+ 0.09	+ 1.86
<i>Education</i>	3.9431	249.20	233.98	221.48	+ 6.50	+ 12.52
84 Education	3.9431	249.20	233.98	221.48	+ 6.50	+ 12.52
<i>Restaurants and hotels</i>	1.2286	275.88	271.02	261.89	+ 1.79	+ 5.34
85 Readymade Food	1.2286	275.88	271.02	261.89	+ 1.79	+ 5.34
<i>Misc. goods and services</i>	2.7550	244.71	242.19	232.97	+ 1.04	+ 5.04
86 Personal Care	1.4935	225.21	224.06	213.72	+ 0.51	+ 5.38
87 Cosmetics	0.3853	203.88	203.77	199.01	+ 0.05	+ 2.45
88 Blades	0.0322	195.78	195.52	195.05	+ 0.13	+ 0.37
89 Personal Equipments	0.8440	299.71	293.59	284.00	+ 2.08	+ 5.53

Annexure B: Wholesale Price Indices by Major Groups & Commodities (2007-08=100)

Item and Specification	Weight	Index Numbers			% Change in Apr 2017 over			
		Apr 17	Mar 17	Apr 16	Mar 2017	Apr 2016		
General	100.0000	219.22	217.29	206.87	+	0.89	+	5.97
Agriculture Forestry & Fisher	25.7674	254.52	247.41	229.78	+	2.87	+	10.77
001 Wheat	0.6297	208.27	215.36	207.11	-	3.29	+	0.56
002 Maize	0.6764	196.14	188.80	205.56	+	3.89	-	4.58
003 Rice	2.4413	161.46	158.39	142.90	+	1.94	+	12.99
004 Sorghum / Jowar	0.0214	237.62	252.72	286.45	-	5.97	-	17.05
005 Millet / Bajra	0.0374	168.81	166.48	187.00	+	1.40	-	9.73
006 Vegetables	1.2441	309.16	228.79	277.16	+	35.13	+	11.55
007 Fresh Fruits	1.5144	302.55	266.14	267.02	+	13.68	+	13.31
008 Dry Fruits	0.2478	237.07	237.76	248.97	-	0.29	-	4.78
009 Cotton Seeds	1.1511	274.20	273.72	254.81	+	0.18	+	7.61
010 Other Oil Seeds	0.0722	182.29	181.57	159.83	+	0.40	+	14.05
011 Edible Roots / Potatoes	0.2540	196.74	193.76	104.08	+	1.54	+	<u>89.03</u>
012 Stimulant & Spice Crops	0.1634	211.77	218.25	234.41	-	2.97	-	9.66
013 Pulses	0.4901	266.68	262.14	259.57	+	1.73	+	2.74
014 Sugar Crops	1.0725	268.94	268.94	286.29	+	0.00	-	6.06
015 Fibre Crops	5.3169	219.01	219.67	174.57	-	0.30	+	25.46
016 Unmanufactured Tobacco	0.0742	279.24	277.89	230.61	+	0.49	+	21.09
017 Poultry	0.5633	223.38	217.22	231.81	+	2.84	-	3.64
018 Raw Milk from Bovine Animals	7.0279	268.56	266.07	256.11	+	0.94	+	4.86
019 Eggs	0.5034	169.58	173.47	150.83	-	2.24	+	12.43

Annexure B: Wholesale Price Indices by Major Groups & Commodities

(2007-08=100)

Item and Specification	Weight	Index Numbers			% Change in Apr 2017 over		
		Apr 17	Mar 17	Apr 16	Mar 2017	Apr 2016	
020 Raw Animal Materials / Wool	0.0351	177.28	177.63	175.99	-	0.20	+ 0.73
021 Hides & Fur Skins, Raw	0.4834	107.72	106.49	151.73	+	1.16	- 29.01
022 Fuel Wood in Logs	0.0179	279.63	279.63	264.77	+	0.00	+ 5.61
023 Fish Live Fresh or Chilled	1.7295	467.04	466.06	369.26	+	0.21	+ 26.48
Ores/Minerals, Elec., Gas & W	12.0389	242.28	242.56	244.59	-	0.12	- 0.94
024 Coal not Agglomerated	0.7508	155.29	155.29	168.63	+	0.00	- 7.91
025 Natural Gas Liquified	5.7385	209.92	210.52	208.04	-	0.29	+ 0.90
026 Salt & Pure Sodium Chloride	0.0584	242.00	240.26	252.31	+	0.72	- 4.09
027 Electrical Energy	5.4912	288.00	288.00	293.09	+	0.00	- 1.74
Food, Beverages, Tobacco, Textil	31.1122	227.31	227.09	214.90	+	0.10	+
Food Products, Beverages &	20.0718	238.72	238.45	228.66	+	0.11	+
028 Meat of Animals	3.4559	287.03	283.49	269.28	+	1.25	+ 6.59
029 Vegetables & Fruit Juice	0.0058	223.21	223.21	202.69	+	0.00	+ 10.12
030 Dried Fruits & Nuts	0.1733	263.49	264.08	245.68	-	0.22	+ 7.25
031 Fruit Juices	0.3880	180.42	179.97	176.37	+	0.25	+ 2.30
032 Vegetable Oils Refined	1.9242	155.05	154.86	150.87	+	0.12	+ 2.77
033 Vegetable Ghee	1.5632	126.45	126.57	121.50	-	0.09	+ 4.07
034 Oil Cakes	0.9611	229.75	226.58	222.77	+	1.40	+ 3.13
035 Processed Liquid Milk	4.4437	262.24	262.24	248.90	+	0.00	+ 5.36
036 Milk & Cream in Solid Form	0.0316	218.15	218.15	219.24	+	0.00	- 0.50
037 Ice Cream	0.0047	245.21	245.21	229.62	+	0.00	+ 6.79
038 Dairy Products N.E.C	0.0117	254.71	254.42	247.85	+	0.11	+ 2.77
039 Wheat Flour	2.3034	194.97	197.79	195.65	-	1.43	- 0.35
040 Other Cereal Flour	0.0604	242.58	250.54	239.21	-	3.18	+ 1.41
041 Sugar Refined	1.7975	221.44	223.81	240.36	-	1.06	- 7.87
042 Chocolate	0.0139	100.00	100.00	101.06	+	0.00	- 1.05
043 Sugar Confectionary	0.0738	128.44	128.44	118.83	+	0.00	+ 8.09
044 Coffee & Tea	0.7303	256.18	254.52	234.40	+	0.65	+ 9.29
045 Spices	0.1449	190.30	190.42	189.67	-	0.06	+ 0.33
046 Other Food Products	0.0336	293.85	293.85	292.52	+	0.00	+ 0.45
047 Mineral Water	0.0207	198.57	198.57	194.37	+	0.00	+ 2.16
048 Beverages	0.6303	172.33	172.33	172.44	+	0.00	- 0.06
049 Tobacco Products	1.2998	445.85	445.85	390.01	+	0.00	+ 14.32
Textiles & Apparels	10.3289	207.05	206.89	189.28	+	0.08	+
050 Cotton Yarn	5.2491	203.06	203.06	173.67	+	0.00	+ 16.92
051 Nylon Yarn	0.1719	143.99	143.99	147.08	+	0.00	- 2.10
052 Blended Yarn	0.1689	182.78	182.33	176.66	+	0.25	+ 3.46
053 Woven Fabrics	0.0128	310.72	310.72	275.66	+	0.00	+ 12.72
054 Cotton Fabrics	0.6343	209.95	209.30	206.45	+	0.31	+ 1.70
055 Other Fabrics	1.1016	224.40	224.40	220.25	+	0.00	+ 1.88
056 Silk & Reyon Fabrics	0.7350	186.55	186.55	188.44	+	0.00	- 1.00
057 Towels	0.1235	276.14	276.14	267.20	+	0.00	+ 3.35

058	Blankets	0.0029	247.52	247.52	243.93	+	0.00	+	1.47
059	Bed Sheets	0.0913	256.07	256.07	256.29	+	0.00	-	0.09
060	Quilts	0.0019	203.79	203.79	198.00	+	0.00	+	2.92
061	Woolen Carpets	0.0383	196.43	196.43	181.55	+	0.00	+	8.20
062	Synthetic Carpets	0.0566	130.95	130.95	129.25	+	0.00	+	1.32
063	Hosiery Products	0.8832	241.83	241.83	222.52	+	0.00	+	8.68
064	Readymade Garments	1.0576	197.19	196.08	193.27	+	0.57	+	2.03
	Leather Products	0.7115	199.75	199.75	198.73	+	0.00	+	0.51
065	Leather Without Hair	0.2973	221.97	221.97	221.97	+	0.00	+	0.00
066	Other Leather N.E.C	0.2567	207.31	207.31	207.31	+	0.00	+	0.00
067	Footwears	0.1575	145.51	145.51	140.89	+	0.00	+	3.28
	Other Transportable Goods	22.3659	171.61	171.65	162.91	-	0.02	+	5.34
068	Timber	0.0165	231.53	226.13	220.36	+	2.39	+	5.07
069	Printing Paper	0.4279	173.54	165.63	161.82	+	4.78	+	7.24
070	Hard Board	0.1579	220.83	220.83	197.92	+	0.00	+	11.58
071	Coke	0.2797	163.45	163.45	163.45	+	0.00	+	0.00
072	Motor Spirit	1.5336	124.98	123.29	108.54	+	1.37	+	15.15
073	Diesel Oil	5.2664	156.91	155.81	136.30	+	0.71	+	15.12
074	Kerosine Oil	0.2151	117.12	117.12	115.11	+	0.00	+	1.75
075	Furnace Oil	3.2664	98.59	104.67	58.58	-	5.81	+	<u>68.30</u>
076	Mobil Oil	0.7114	200.49	196.91	196.00	+	1.82	+	2.29
077	Chemicals	1.7720	170.99	170.99	182.61	+	0.00	-	6.36
078	Dyeing Material	0.1539	146.55	146.55	146.55	+	0.00	+	0.00
079	Fertilizers	2.8657	218.31	216.49	262.47	+	0.84	-	16.82
080	Pesticides	0.2763	304.43	304.43	312.37	+	0.00	-	2.54
081	Insecticides	0.1276	142.02	143.92	135.79	-	1.32	+	4.59
082	Paints & Varnishes	0.1916	294.51	294.51	295.36	+	0.00	-	0.29
083	Medicines	1.1428	174.00	174.85	160.98	-	0.49	+	8.09
084	Soaps & Detergents	0.8168	191.21	191.21	182.24	+	0.00	+	4.92
085	Auto Tyres	0.2703	177.07	177.07	184.65	+	0.00	-	4.11
086	Plastic Products	0.4550	225.88	225.88	226.58	+	0.00	-	0.31
087	Glass sheets	0.2089	298.97	298.97	231.30	+	0.00	+	29.26
088	Other Glass Articles	0.1635	317.24	312.91	243.63	+	1.38	+	30.21
089	Ceramics & Sanitary Fixture	0.0244	233.92	233.92	227.51	+	0.00	+	2.82
090	Bricks, Blocks & Tiles	0.1566	220.73	220.98	217.83	-	0.11	+	1.33
091	Cement	1.8145	216.55	216.71	205.87	-	0.07	+	5.19
092	Bed Foam	0.0006	170.00	170.83	167.67	-	0.49	+	1.39
093	Matches	0.0505	171.36	165.53	162.62	+	3.52	+	5.37
	Metal Product, Machinery & Eq	8.7156	176.25	175.44	171.22	+	0.46	+	2.94
094	Pig Iron	0.0593	128.97	128.97	128.97	+	0.00	+	0.00
095	Steel Bar & Sheets	1.4022	134.87	133.96	127.90	+	0.68	+	5.45
096	Pipe Fittings	0.0780	215.29	215.29	193.06	+	0.00	+	11.51
097	Steel Products	0.3879	177.56	177.48	176.99	+	0.05	+	0.32
098	Engines & Motors	0.0046	116.98	116.98	109.24	+	0.00	+	7.09
099	Vacuum Pumps	0.0155	123.69	123.69	114.95	+	0.00	+	7.60
100	Air Conditioners	0.0049	200.10	200.10	201.18	+	0.00	-	0.54
101	Cultivators	0.0551	190.66	190.66	219.76	+	0.00	-	13.24
102	Chuff Cutter	0.1293	153.46	153.46	149.20	+	0.00	+	2.86
103	Tractors	0.0028	201.75	201.75	205.43	+	0.00	-	1.79
104	Lathe Machines	0.0525	241.06	241.06	208.81	+	0.00	+	15.44
105	Concrete Mixture	0.0107	138.83	138.83	138.83	+	0.00	+	0.00
106	Fridge,WashM,SewM,Fans,Iron	1.1645	213.78	208.84	200.02	+	2.37	+	6.88
107	Electric Wires	0.0912	204.51	204.51	195.19	+	0.00	+	4.77
108	Lighting Equipments	1.4431	170.73	170.73	167.30	+	0.00	+	2.05
109	Radio & Television	0.1843	140.42	140.42	126.49	+	0.00	+	11.01
110	Motor Vehicles	0.0244	191.39	191.39	185.25	+	0.00	+	3.31
111	Motorcycles	0.2570	125.89	125.89	125.89	+	0.00	+	0.00
112	Bicycles	3.3483	187.65	187.65	185.63	+	0.00	+	1.09

