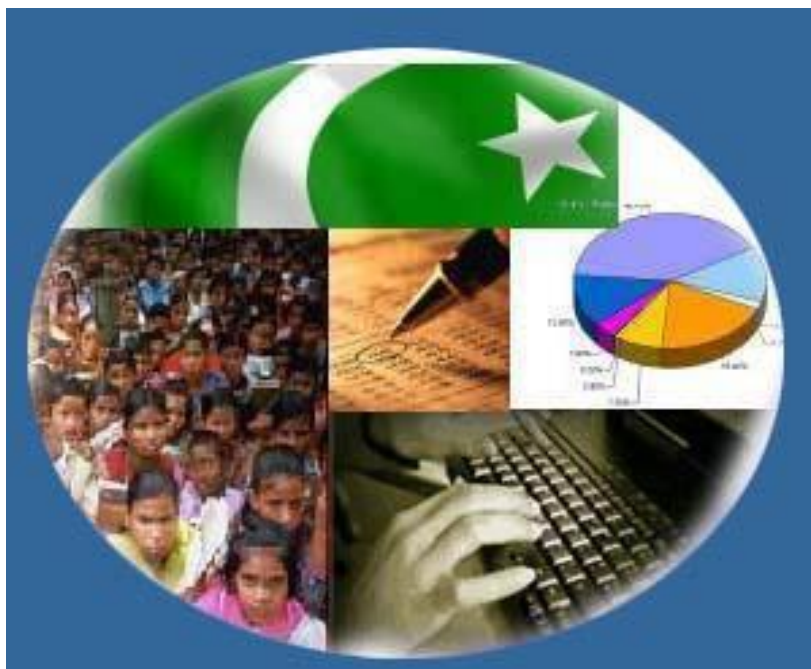


Monthly Review on Price Indices



July, 2015
(Base 2007-08)

Government of Pakistan
Statistics Division
Pakistan Bureau of Statistics
Islamabad

Inflation in Brief

1. CPI inflation, General, increased by 1.9% on year-on-year basis in July 2015 as compared to 3.2% in the previous month and by 7.9% in July 2014. On month-on-month basis, it increased by 0.4% in July 2015 as compared to increase of 0.6% in the previous month and 1.7% in July 2014.
2. Core inflation measured by non-food non-energy CPI (Core NFNE) increased by 4.1% on (YoY) basis in July 2015 as compared to 4.6% in the previous month and by 8.3% in July 2014. On (MoM) basis, it increased by 0.6% in July 2015 as compared to increase of 0.1% in the previous month and 1.1% in July 2014.
3. Core inflation, measured by 20% weighted trimmed mean CPI (Core Trimmed) increased by 2.9% on (YoY) basis in July 2015 as compared to 3.8% in the previous month and by 7.6% in July 2014. On (MoM) basis, it increased by 0.5% in July 2015 as compared to increase of 0.2% in the previous month and an increase of 0.8% in July 2014.
4. SPI inflation on YoY decreased by 0.5% in July 2015 as compared to increase of 1.1% a month earlier and an increase of 5.9% in July 2014. On MoM basis, it increased 0.3% in July 2015 as compared to an increase of 1.0% in the month earlier and increase of 2.0% in July 2014.
5. WPI inflation on YoY basis decreased by 2.9% in July 2015 as compared to decrease of 2.0% a month earlier and an increase of 6.6% in July 2014. WPI inflation on MoM basis it decreased by 0.4% in July 2015 as compared to increase of 1.2% a month earlier and increase of 0.5% in July 2014.
6. Figures 1 and 2 show graphically the data of Table 1. Table 1.1 shows "Period Average" and "YoY" percent changes in indices of three years.

Table 1: Inflation (%) (Base 2007-08)

Period	CPI						Core Inflation				SPI**		WPI	
	General		Food		Non-food		NFNE*		Trimmed		YoY	MoM	YoY	MoM
	YoY	MoM	YoY	MoM	YoY	MoM	YoY	MoM	YoY	MoM				
Jun14	8.2	0.6	7.4	1.0	8.9	0.3	8.7	0.4	7.9	0.3	6.2	1.1	7.7	1.4
Jul 14	7.9	1.7	7.0	2.7	8.5	1.0	8.3	1.1	7.6	0.8	5.9	2.0	6.6	0.5
Aug14	7.0	0.3	5.6	0.6	8.1	0.2	7.9	0.2	7.1	0.2	5.2	0.8	3.3	-0.5
Sep14	7.7	0.4	7.2	0.0	8.0	0.6	8.1	0.7	7.1	0.2	5.4	0.2	2.7	0.2
Oct 14	5.8	0.2	5.2	-0.2	6.3	0.5	7.8	0.7	6.0	0.4	4.1	0.0 ¹	1.3	-0.3
Nov 14	4.0	-0.5	2.1	-0.4	5.4	-0.6	6.9	-0.5	5.3	0.1	-0.3	-1.1	0.0 ²	-1.0
Dec 14	4.3	-1.0	3.4	-2.1	4.9	-0.2	6.7	0.1	5.2	0.0	0.8	-1.5	-0.9	-1.9
Jan 15	3.9	0.1	3.0	-0.5	4.5	0.5	6.4	0.7	4.8	0.3	1.1	-0.9	-2.4	-1.0
Feb 15	3.2	-0.9	2.1	-1.8	4.0	-0.3	6.2	0.0	4.2	-0.2	0.2	-1.0	-3.4	-1.1
Mar 15	2.5	0.2	0.5	0.5	3.9	0.0	5.9	0.1	3.8	0.0	-1.9	0.0	-3.7	0.0 ³
Apr 15	2.1	1.3	0.0	1.4	3.7	1.3	5.4	1.4	3.1	0.6	-1.6	0.4	-2.9	0.9
May 15	3.2	0.8	3.0	1.8	3.3	0.0	4.9	0.0	3.9	0.1	1.2	1.3	-1.8	1.1
Jun-15	3.2	0.6	3.2	1.2	3.2	0.2	4.6	0.1	3.8	0.2	1.1	1.0	-2.0	1.2
Jul-15	1.9	0.4	0.6	0.1	2.8	0.6	4.1	0.6	2.9	0.5	-0.5	0.3	-2.9	-0.4

*NFNE is non-food non-energy, ** SPI for quintile 1 ¹ Actual figure is -0.03, displayed in rounded figure

²Actual figure is 0.02, ³Actual figure is 0.01, displayed in rounded figure

Table 1.1 : YoY % Changes of Indices (Base 2007-08)

Index	July over July % Changes		
	2015-16	2014-15	2013-14
CPI	1.87	7.88	8.26
SPI	-0.48	5.91	9.80
WPI	-2.86	6.55	6.55

Figure 1: CPI Inflation YoY, Special Indices

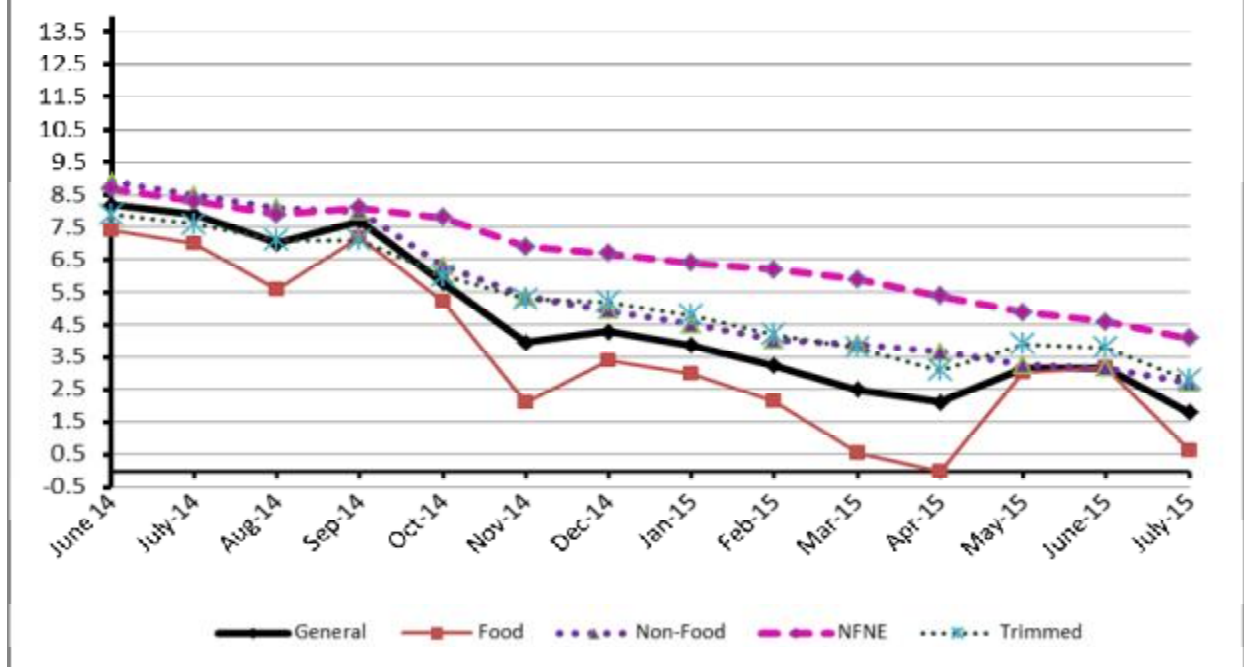
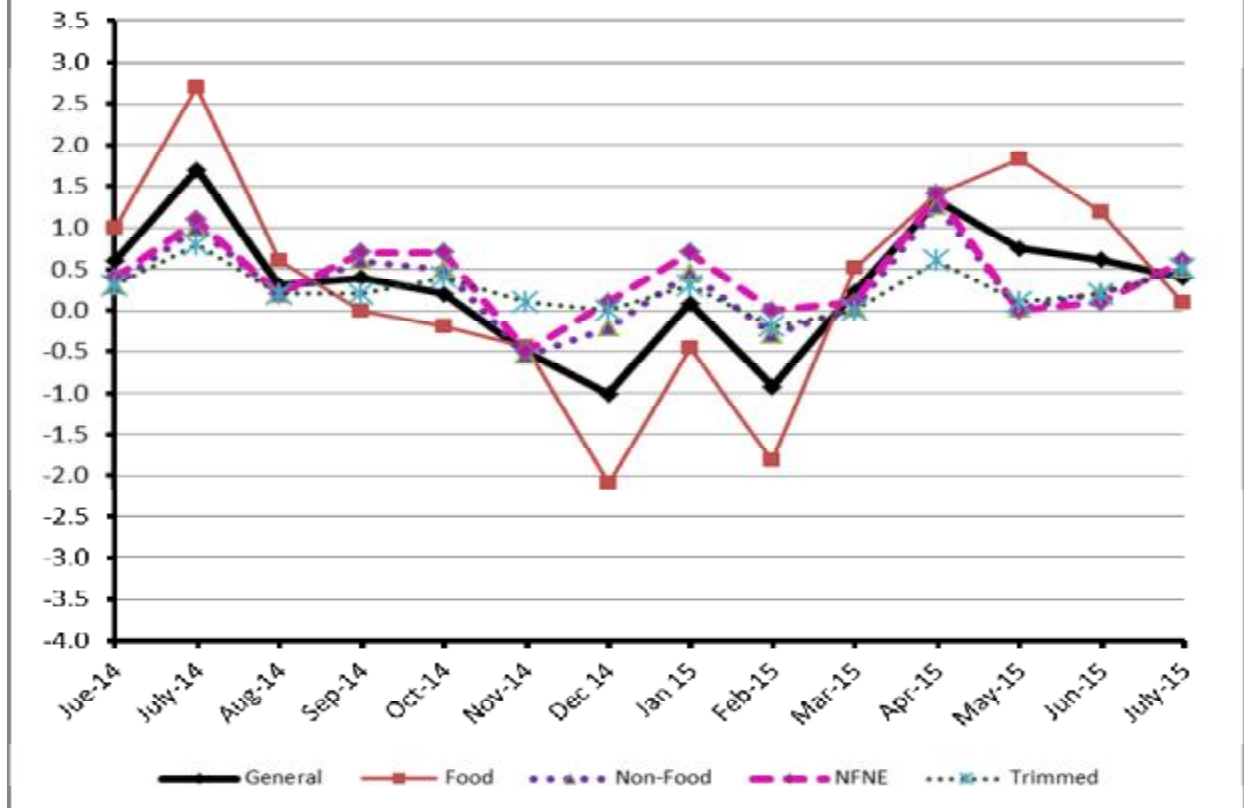


Figure 2: CPI Inflation MoM, Special Indices



II. Consumer Price Index (CPI)

The Consumer Price Index of July, 2015 has increased by 0.43 over June, 2015 and 1.88% over corresponding month of the last year, i.e. July 2014.

Table 2 : Consumer Price Index by Group of Commodities and Services (Base 2007-08)

No	Group	Group Weight (%)	Indices			% Change July 2015 Over		Impact (In % points) July 2015 Over	
			July 2015	June 2015	July 2014	June 2015	July 2014	June 2015	July 2014
	General	100.00	201.76	200.89	198.05	0.43	1.87	0.43	1.87
1.	Food & Non-alcoholic Bev.	34.83	219.76	219.66	220.48	0.05	-0.33	0.02	-0.13
	<i>Non-perishable Food Items</i>	<i>29.84</i>	218.41	217.77	213.61	0.29	2.25	0.09	0.72
	<i>Perishable Food Items</i>	<i>4.99</i>	227.80	230.97	261.59	-1.37	-12.92	-0.08	-0.85
2.	Alcoholic Bev. & Tobacco	1.41	309.83	304.76	265.82	1.66	16.56	0.04	0.31
3.	Clothing & Footwear	7.57	219.65	218.56	209.51	0.50	4.84	0.04	0.39
4.	Housing, Water, Electricity, Gas & Fuels	29.41	179.77	177.76	171.62	1.13	4.75	0.29	1.21
5.	Furnishing & Household Equipment Maintenance	4.21	213.53	211.59	204.42	0.92	4.46	0.04	0.19
6.	Health	2.19	178.91	178.55	173.40	0.20	3.18	0.00	0.06
7.	Transport	7.20	178.62	178.59	198.38	0.02	-9.96	0.00	-0.72
8.	Communication	3.22	130.35	130.30	129.85	0.04	0.39	0.00	0.01
9.	Recreation & Culture	2.02	193.01	192.98	188.76	0.02	2.25	0.00	0.04
10.	Education	3.94	209.17	209.17	191.33	0.00	9.32	0.00	0.36
11.	Restaurants & Hotels	1.23	249.70	249.24	239.23	0.18	4.38	0.00	0.06
12.	Miscellaneous	2.76	223.13	223.37	216.98	-0.11	2.83	0.00	0.09

Main contributors to month-on-month and year-on-year percentage changes are given below and detail is given in Annexure A.

- Month-on-month** Top few commodities which varied from previous month i.e. June 2015 are given below:-

Food Items Increased: Pulse Gram (8.26%), Fresh Fruits (7.20%), Potatoes (6.81%), Besan (5.63%), Sugar (5.37%), Gram Whole (3.06%), Gur (2.55%), Cigarettes (1.70%), Tea (1.33%), Eggs (1.26%), Meat (1.14%) and Beverages (1.10%).

Decreased: Tomatoes (29.06%), Onions (8.83%), Chicken (5.30%), Fresh Vegetables (3.74%), Pulse Moong (1.73%), Beans (1.63%), Betel Leaves & Nuts (1.36%) and Fish (1.03%).

Non-food Items Increased: Household Servants (2.46%), Readymade Garments (1.42%), Electricity (1.37%), House Rent (1.19%), Tailoring (1.09%) and Construction Wage Rates (1.02%).

Decreased: Personal Equipment (0.69%).

- Year-on-Year:** Top few commodities which varied from previous year i.e. July 2014 are given below:-

Food Items Increased: Pulse Gram (38.10%), Besan (32.44%), Pulse Mash (21.30%), Cigarettes (16.71%), Sugar (15.54%), Chicken (14.04%), Tea (13.51%), Gram Whole (11.17%) and Onions (10.67%).

Decreased: Potatoes (62.50%), Cooking Oil (12.21%), Tomatoes (11.33%), Vegetable Ghee (10.81%) and Rice (10.57%).

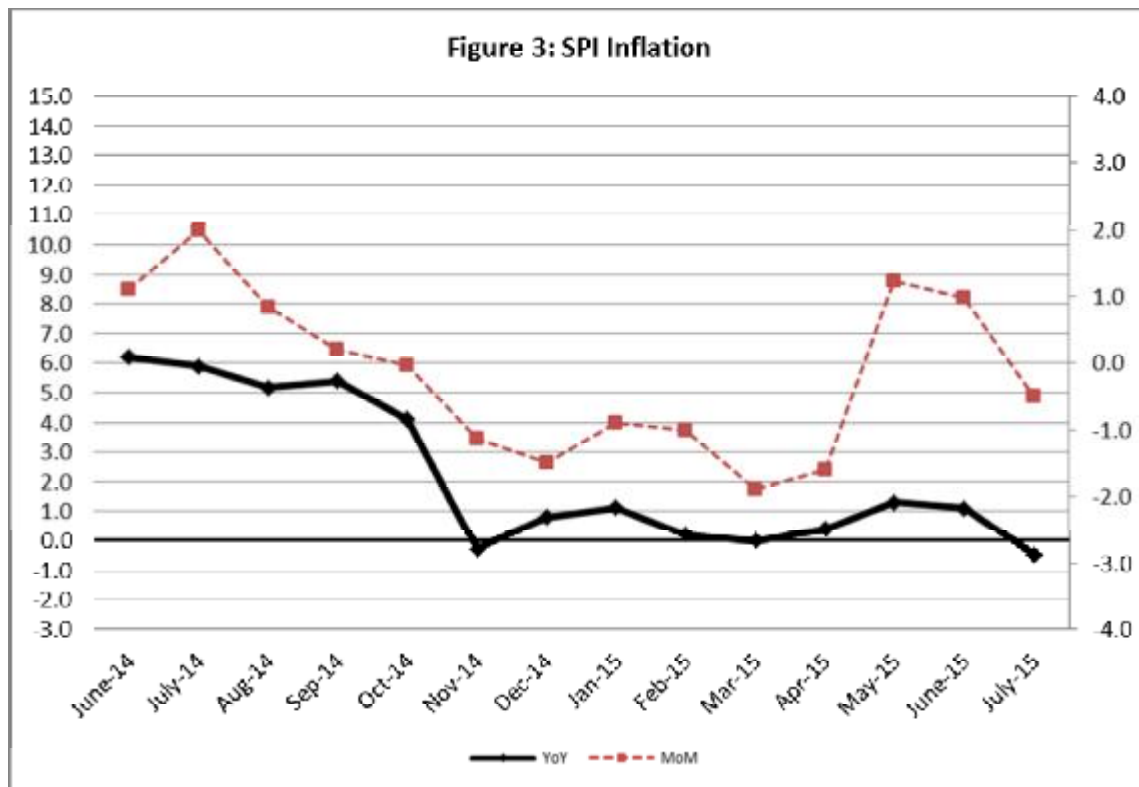
Non-food Items Increased: Woolen Readymade Garments (10.31%).

Decreased: Kerosene Oil (19.66%) and Motor Fuel (18.86%).

III. Sensitive Price Indicator

Quintile-wise percentage changes YoY and MoM are given below in Table 3. The series from June 2014 to July 2015 is also graphed below in Figure 3.

Table 3 : Sensitive Price Indicator (Base 2007-08)					
Quintiles	Indices			% Change July 2015 over	
	July 2015	June 2015	July 2014	June 2015	July 2014
1	206.04	205.34	207.04	0.34	-0.48
2	212.55	211.83	213.40	0.34	-0.40
3	216.19	215.43	216.40	0.35	-0.10
4	218.21	217.37	218.64	0.39	-0.20
5	215.76	214.82	217.57	0.44	-0.83
Combined	215.13	214.29	216.14	0.39	-0.47



IV. Wholesale Price Index

The Wholesale Price Index for July 2015 is decreased by 0.40% over June, 2015. It is decreased by 2.89% over the corresponding month of the last year. YoY and MoM movements, from June, 2014 to July 2015 are also graphed below in Figure 4.

Table 4 : Wholesale Price Index by Group of Commodities (Base 2007-08)									
No.	Group	Group Weight (%)	Indices			% Change July, 2015 over		Impact (in %age points) July, 2015 over	
			July 2015	June 2015	July 2014	June 2015	July 2014	June 2015	July 2014
	General	100.00	209.53	210.37	215.76	-0.40	-2.89	-0.40	-2.89
1.	Agriculture, Forestry & Fishery Products	25.77	224.93	227.46	230.64	-1.11	-2.48	-0.31	-0.68
2.	Ores & Minerals, Electricity, Gas & Water	12.04	244.93	245.32	242.67	-0.16	0.93	0.00	0.15
3.	Food Products, Beverages & Tobacco, Textiles, Apparel & Leather Products	31.11	210.44	209.87	205.50	0.27	2.40	0.08	0.71
	i. Food Products, Bev. & Tobacco	20.07	223.32	222.54	210.83	0.35	5.92	0.07	1.16
	ii. Textiles and Apparel	10.33	186.62	186.42	194.63	0.11	-4.12	0.01	-0.38
	iii. Leather Products	0.71	193.00	193.00	213.10	0.00	-9.43	0.00	-0.07
4.	Other Transportable Goods except Metal Products, Machinery & Equipment	22.37	185.86	187.23	215.63	-0.73	-13.81	-0.14	-3.09
5.	Metal Products, Machinery & Equipment	8.72	172.56	172.71	171.57	-0.09	0.58	-0.01	0.04

Main contributors to month-on-month and year-on-year percentage changes are given below and detail is given in Annexure B.

1. **Month-on-month** Top few commodities which varied from previous month i.e. June, 2015 are given below:-

Increased: Fresh Fruits (9.05%), Other Cereal Flour (8.00%), Jowar (6.99%), Sugar (5.73%), Potatoes (5.65%), Eggs (5.26%), Fish (4.01%), Coffee & Tea (2.09%), Wheat (2.07%), Bajra (1.58%), Pesticides (1.43%) and Plastic Products (1.36%).

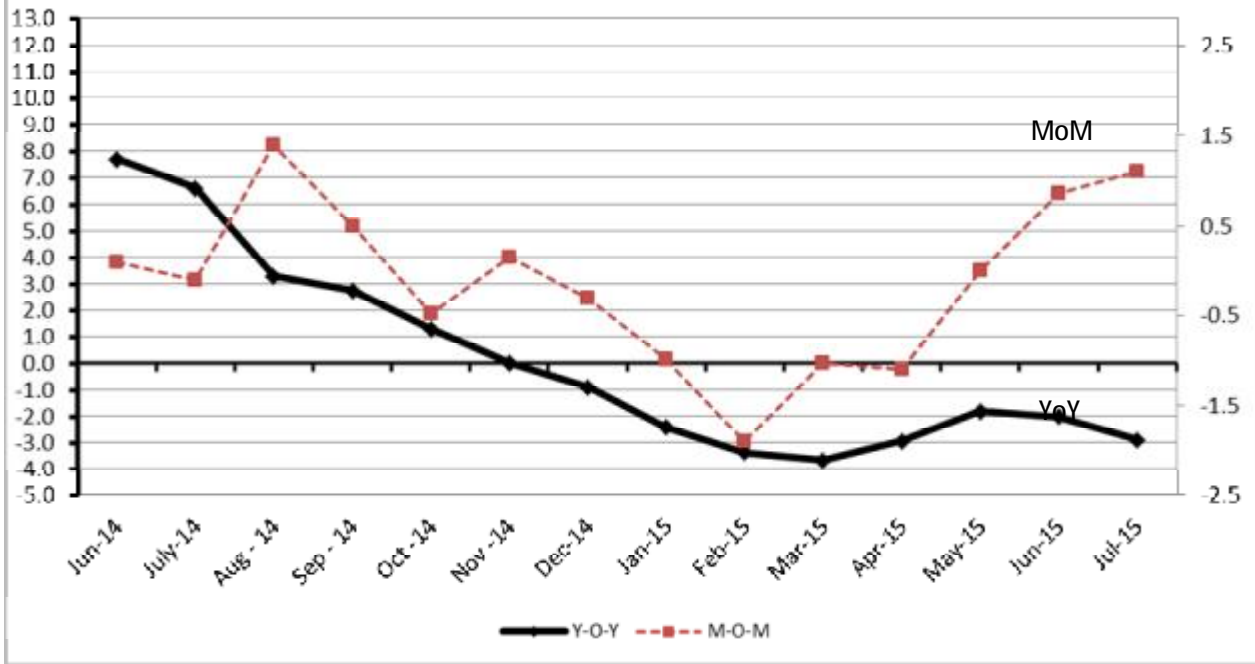
Decreased: Fibre Crops (10.08%), Furnace Oil (8.46%), Vegetables (7.85%) and Poultry (2.39%).

2. **Year-on-year** Top few commodities which varied from previous year i.e. July, 2014 are given below:-

Increased: Other Cereal Flour (52.11%), Fish (25.12%), Tobacco Products (22.69%), Pulses (18.48%), Bajra (16.68%), Pesticides (16.53%), Sugar Confectionary (15.41%), Poultry (15.25%), Sugar (15.16%), Coffee & Tea (14.38%) and Quilt (14.16%).

Decreased: Potatoes (71.88%), Kerosene Oil (37.87%), Furnace Oil (37.86%), Diesel (28.07%), Motor Spirit (27.97%), Stimulant & Spice Crops (24.39%), Insecticides (22.57%) and Fibre Crops (20.99%).

Figure 4: WPI Inflation



Annexure A: Consumer Price Index Numbers by Commodity Groups & Commodities (2007-08=100)

Item and Specification	Weight	Index Numbers			% Change in Jul 2015 over			
		Jul 15	Jun 15	Jul 14	Jun 2015	Jul 2014		
General	100.0000	201.76	200.89	198.05	+	0.43	+	1.87
Food and non-alcoholic Beverages	34.8343	219.76	219.66	220.48	+	0.05	-	0.33
01 Wheat	0.3477	195.34	193.72	203.12	+	0.84	-	3.83
02 Wheat Flour	4.1648	209.15	207.87	214.47	+	0.62	-	2.48
03 Wheat Product	0.0959	212.14	211.77	216.16	+	0.17	-	1.86
04 Besan	0.1500	226.93	214.84	171.35	+	5.63	+	32.44
05 Rice	1.5821	174.19	175.16	194.78	-	0.55	-	10.57
06 Cereals	0.1563	242.61	241.01	237.23	+	0.66	+	2.27
07 Bakery & Confectionary	1.1550	208.80	208.28	204.30	+	0.25	+	2.20
08 Nimco	0.4574	240.02	239.40	232.48	+	0.26	+	3.24
09 Meat	2.4303	250.33	247.52	238.64	+	1.14	+	4.90
10 Chicken	1.3596	227.83	240.58	199.78	-	5.30	+	14.04
11 Fish	0.2970	211.33	213.54	221.80	-	1.03	-	4.72
12 Milk Fresh	6.6800	254.76	254.57	244.00	+	0.07	+	4.41
13 Milk Products	0.6338	247.17	246.89	240.15	+	0.11	+	2.92
14 Milk Powder	0.1129	226.78	226.31	223.66	+	0.21	+	1.39
15 Eggs	0.4555	174.43	172.26	177.27	+	1.26	-	1.60
16 Mustard Oil	0.0952	152.44	151.35	158.40	+	0.72	-	3.76
17 Cooking Oil	1.7538	142.10	143.39	161.87	-	0.90	-	12.21
18 Vegetable Ghee	2.0714	140.77	140.50	157.83	+	0.19	-	10.81
19 Dry Fruits	0.2543	252.84	254.52	237.98	-	0.66	+	6.24
20 Fresh Fruits	1.8649	263.31	245.63	273.57	+	7.20	-	3.75
21 Pulse Masoor	0.2712	195.25	195.23	180.20	+	0.01	+	8.35
22 Pulse Moong	0.2336	306.14	311.53	301.58	-	1.73	+	1.51
23 Pulse Mash (Washed)	0.2098	253.39	253.97	208.89	-	0.23	+	21.30
24 Pulse Gram	0.2361	230.62	213.03	166.99	+	8.26	+	38.10
25 Gram Whole	0.1616	199.27	193.36	179.25	+	3.06	+	11.17
26 Beans	0.0269	232.93	236.80	240.10	-	1.63	-	2.99
27 Potatoes	0.4699	176.23	165.00	469.93	+	6.81	-	62.50
28 Onion	0.5340	255.12	279.84	230.52	-	8.83	+	10.67
29 Tomatoes	0.4419	148.28	209.01	167.23	-	29.06	-	11.33
30 Fresh Vegetables	1.6802	215.04	223.39	224.72	-	3.74	-	4.31
31 Sugar	1.0445	232.55	220.70	201.28	+	5.37	+	15.54
32 Gur	0.0220	279.18	272.24	257.03	+	2.55	+	8.62
33 Honey	0.0446	304.35	303.39	288.66	+	0.32	+	5.44
34 SweetMeat	0.2483	235.91	235.81	227.84	+	0.04	+	3.54
35 Beverages	1.1990	215.67	213.32	208.53	+	1.10	+	3.42
36 Jam, Tomato Ketchup & Pickles	0.2454	209.37	208.86	196.07	+	0.24	+	6.78
37 Condiments	0.2656	258.03	257.93	247.60	+	0.04	+	4.21
38 Spices	0.5441	237.36	236.20	228.43	+	0.49	+	3.91
39 Tea	0.8377	235.06	231.98	207.09	+	1.33	+	13.51
Alcoholic Beverages, Tobacco	1.4135	309.83	304.76	265.82	+	1.66	+	16.56
40 Cigarettes	1.3906	311.47	306.27	266.88	+	1.70	+	16.71
41 Betel Leaves & Nuts	0.0229	210.25	213.15	202.02	-	1.36	+	4.07
Clothing and footwear	7.5708	219.65	218.56	209.51	+	0.50	+	4.84
42 Cotton Cloth	1.7286	213.49	213.01	206.19	+	0.23	+	3.54
43 Woolen Cloth	0.8759	234.73	234.23	228.36	+	0.21	+	2.79
44 Readymade Garments	0.9739	225.49	222.33	210.19	+	1.42	+	7.28
45 Woolen Readymade Garments	0.3964	240.86	240.86	218.34	+	0.00	+	10.31
46 Hosiery	0.5094	232.85	230.96	220.45	+	0.82	+	5.62
47 Dopatta	0.4412	232.89	232.70	225.70	+	0.08	+	3.19
48 Cleaning and Laundry	0.2110	238.32	238.32	229.21	+	0.00	+	3.97
49 Tailoring	0.8840	278.39	275.40	253.71	+	1.09	+	9.73
50 Footwear	1.5504	164.77	164.64	163.78	+	0.08	+	0.60
Housing, water, Elec., Gas and	29.4149	179.77	177.76	171.62	+	1.13	+	4.75
51 House Rent	21.8149	168.87	166.88	159.82	+	1.19	+	5.66
52 Construction Input Items	0.5623	239.75	239.17	234.10	+	0.24	+	2.41
53 Construction Wage Rates	0.3331	215.28	213.11	200.14	+	1.02	+	7.56
54 Water Supply	0.4971	149.92	149.92	149.92	+	0.00	+	0.00
55 Electricity	4.3985	234.69	231.52	227.44	+	1.37	+	3.19
56 Gas	1.5756	143.81	143.81	143.81	+	0.00	+	0.00

Annexure A: Consumer Price Index Numbers by Commodity Groups & Commodities (2007-08=100)

Item and Specification	Weight	Index Numbers			% Change in Jul 2015 over	
		Jul 15	Jun 15	Jul 14	Jun 2015	Jul 2014
57 Kerosene Oil	0.0057	223.65	223.49	278.37	+ 0.07	- 19.66
58 Firewood Whole	0.2277	275.52	272.98	264.49	+ 0.93	+ 4.17
<i>Furnishing and household equi</i>	4.2082	213.53	211.59	204.42	+ 0.92	+ 4.46
59 Furniture	0.3315	205.94	205.27	195.17	+ 0.33	+ 5.52
60 Household Textiles	0.6489	209.69	209.43	199.95	+ 0.12	+ 4.87
61 Household Equipment	0.5936	175.41	175.10	170.88	+ 0.18	+ 2.65
62 Utensils	0.3212	216.41	214.29	206.30	+ 0.99	+ 4.90
63 Plastic Products	0.2547	203.33	202.65	195.95	+ 0.34	+ 3.77
64 Washing Soaps & Detergents	0.7893	223.42	222.38	221.06	+ 0.47	+ 1.07
65 Sewing Needle & Dr Cell	0.1496	198.97	198.97	182.15	+ 0.00	+ 9.23
66 Household Servant	1.0432	234.86	229.23	219.87	+ 2.46	+ 6.82
67 Marriage Hall Charges	0.0762	232.28	231.83	224.45	+ 0.19	+ 3.49
<i>Health</i>	2.1868	178.91	178.55	173.40	+ 0.20	+ 3.18
68 Drugs & Medicines	1.2667	148.93	148.37	145.59	+ 0.38	+ 2.29
69 Medical Equipments	0.0080	226.26	226.26	220.36	+ 0.00	+ 2.68
70 Doctor (MBBS) Clinic Fee	0.5904	242.85	242.85	234.15	+ 0.00	+ 3.72
71 Medical Tests	0.3217	178.44	178.21	170.28	+ 0.13	+ 4.79
<i>Transport</i>	7.2023	178.62	178.59	198.38	+ 0.02	- 9.96
72 Motor Vehicles	0.6630	163.28	163.41	160.37	- 0.08	+ 1.81
73 Motor Vehicle Accessories	0.2439	226.83	226.28	228.75	+ 0.24	- 0.84
74 Motor Fuel	3.0269	154.54	154.52	190.45	+ 0.01	- 18.86
75 Mechanical Service	0.4552	216.37	216.12	206.25	+ 0.12	+ 4.91
76 Motor Vehicle Tax	0.1099	210.18	210.18	210.18	+ 0.00	+ 0.00
77 Transport Services	2.7034	197.35	197.35	212.03	+ 0.00	- 6.92
<i>Communication</i>	3.2198	130.35	130.30	129.85	+ 0.04	+ 0.39
78 Postal Services	0.0662	229.42	227.95	215.95	+ 0.64	+ 6.24
79 Communication & Apparatus	3.1536	128.27	128.25	128.05	+ 0.02	+ 0.17
<i>Recreation and culture</i>	2.0227	193.01	192.98	188.76	+ 0.02	+ 2.25
80 Recreation & Culture	0.8634	128.25	128.25	127.43	+ 0.00	+ 0.64
81 Text Books	0.5706	290.62	290.62	279.73	+ 0.00	+ 3.89
82 Newspapers	0.1934	175.42	175.42	175.42	+ 0.00	+ 0.00
83 Stationery	0.3953	202.14	201.99	197.92	+ 0.07	+ 2.13
<i>Education</i>	3.9431	209.17	209.17	191.33	+ 0.00	+ 9.32
84 Education	3.9431	209.17	209.17	191.33	+ 0.00	+ 9.32
<i>Restaurants and hotels</i>	1.2286	249.70	249.24	239.23	+ 0.18	+ 4.38
85 Readymade Food	1.2286	249.70	249.24	239.23	+ 0.18	+ 4.38
<i>Misc. goods and services</i>	2.7550	223.13	223.37	216.98	- 0.11	+ 2.83
86 Personal Care	1.4935	207.30	206.85	200.54	+ 0.22	+ 3.37
87 Cosmetics	0.3853	191.12	190.66	183.13	+ 0.24	+ 4.36
88 Blades	0.0322	187.44	185.88	184.82	+ 0.84	+ 1.42
89 Personal Equipments	0.8440	267.12	268.97	262.76	- 0.69	+ 1.66

Annexure B: Wholesale Price Indices by Major Groups & Commodities (2007-08=100)

Item and Specification	Weight	Index Numbers			% Change in Jul 2015 over			
		Jul 15	Jun 15	Jul 14	Jun 2015	Jul 2014		
General	100.0000	209.53	210.37	215.76	-	0.40	-	2.89
Agriculture Forestry & Fisher	25.7674	224.93	227.46	230.64	-	1.11	-	2.48
001 Wheat	0.6297	199.02	194.99	207.97	+	2.07	-	4.30
002 Maize	0.6764	194.73	196.59	191.76	-	0.95	+	1.55
003 Rice	2.4413	161.31	163.26	179.66	-	1.19	-	10.21
004 Sorghum / Jowar	0.0214	336.99	314.96	323.08	+	6.99	+	4.31
005 Millet / Bajra	0.0374	203.58	200.42	174.47	+	1.58	+	16.68
006 Vegetables	1.2441	246.36	267.36	247.48	-	7.85	-	0.45
007 Fresh Fruits	1.5144	313.83	287.79	321.25	+	9.05	-	2.31
008 Dry Fruits	0.2478	241.48	240.69	217.95	+	0.33	+	10.80
009 Cotton Seeds	1.1511	236.29	240.08	231.50	-	1.58	+	2.07
010 Other Oil Seeds	0.0722	160.55	161.27	190.46	-	0.45	-	15.70
011 Edible Roots / Potatoes	0.2540	152.85	144.68	543.47	+	5.65	-	<u>71.88</u>
012 Stimulant & Spice Crops	0.1634	348.00	352.58	460.25	-	1.30	-	24.39
013 Pulses	0.4901	235.73	233.89	198.96	+	0.79	+	18.48
014 Sugar Crops	1.0725	286.29	286.29	267.92	+	0.00	+	6.86
015 Fiber Crops	5.3169	159.33	177.20	201.65	-	10.08	-	20.99
016 Unmanufactured Tobacco	0.0742	221.18	220.89	204.74	+	0.13	+	8.03
017 Poultry	0.5633	237.79	243.62	206.33	-	2.39	+	15.25
018 Raw Milk from Bovine Animals	7.0279	252.90	252.90	242.57	+	0.00	+	4.26
019 Eggs	0.5034	184.87	175.64	176.03	+	5.26	+	5.02
020 Raw Animal Materials / Wool	0.0351	174.22	174.22	164.70	+	0.00	+	5.78
021 Hides & Fur Skins, Raw	0.4834	155.92	156.85	146.12	-	0.59	+	6.71
022 Fuel Wood in Logs	0.0179	259.53	259.09	243.47	+	0.17	+	6.60
023 Fish Live Fresh or Chilled	1.7295	308.06	296.17	246.21	+	4.01	+	25.12
Ores/Minerals, Elec., Gas & W	12.0389	244.93	245.32	242.67	-	0.16	+	0.93
024 Coal not Agglomerated	0.7508	223.53	223.53	223.53	+	0.00	+	0.00
025 Natural Gas Liquified	5.7385	200.06	199.99	202.34	+	0.04	-	1.13
026 Salt & Pure Sodium Chloride	0.0584	252.31	252.31	243.18	+	0.00	+	3.75
027 Electrical Energy	5.4912	294.68	295.61	287.44	-	0.31	+	2.52
Food, Beverages, Tobacco, Textil	31.1122	210.44	209.87	205.50	+	0.27	+	2.40
Food Products, Beverages &	20.0718	223.32	222.54	210.83	+	0.35	+	5.92
028 Meat of Animals	3.4559	262.35	262.20	246.01	+	0.06	+	6.64
029 Vegetables & Fruit Juice	0.0058	200.07	199.38	194.12	+	0.35	+	3.07
030 Dried Fruits & Nuts	0.1733	228.54	228.54	217.80	+	0.00	+	4.93
031 Fruit Juices	0.3880	177.53	175.80	171.20	+	0.98	+	3.70
032 Vegetable Oils Refined	1.9242	153.56	153.66	164.33	-	0.07	-	6.55
033 Vegetable Ghee	1.5632	122.09	122.48	140.35	-	0.32	-	13.01
034 Oil Cakes	0.9611	194.96	198.51	232.05	-	1.79	-	15.98
035 Processed Liquid Milk	4.4437	248.71	251.52	223.02	-	1.12	+	11.52
036 Milk & Cream in Solid Form	0.0316	220.46	220.46	212.82	+	0.00	+	3.59
037 Ice Cream	0.0047	219.91	219.91	219.91	+	0.00	+	0.00
038 Dairy Products N.E.C	0.0117	243.80	243.80	235.94	+	0.00	+	3.33
039 Wheat Flour	2.3034	190.27	189.05	195.47	+	0.65	-	2.66
040 Other Cereal Flour	0.0604	210.16	194.60	138.16	+	8.00	+	<u>52.11</u>
041 Sugar Refined	1.7975	249.40	235.88	216.56	+	5.73	+	15.16
042 Chocolate	0.0139	99.19	99.19	99.19	+	0.00	+	0.00
043 Sugar Confectionary	0.0738	118.04	118.04	102.28	+	0.00	+	15.41
044 Coffee & Tea	0.7303	210.96	206.65	184.43	+	2.09	+	14.38
045 Spices	0.1449	189.84	189.97	191.70	-	0.07	-	0.97
046 Other Food Products	0.0336	292.02	292.02	293.72	+	0.00	-	0.58
047 Mineral Water	0.0207	188.22	187.86	185.63	+	0.19	+	1.40
048 Beverages	0.6303	171.95	171.95	167.46	+	0.00	+	2.68
049 Tobacco Products	1.2998	356.45	356.45	290.52	+	0.00	+	22.69
Textiles & Apparels	10.3289	186.62	186.42	194.63	+	0.11	-	4.12
050 Cotton Yarn	5.2491	171.27	171.27	200.42	+	0.00	-	14.54
051 Nylon Yarn	0.1719	150.22	150.22	161.40	+	0.00	-	6.93
052 Blended Yarn	0.1689	188.86	189.54	193.60	-	0.36	-	2.45
053 Woven Fabrics	0.0128	258.39	258.39	226.82	+	0.00	+	13.92
054 Cotton Fabrics	0.6343	201.65	201.34	196.81	+	0.15	+	2.46
055 Other Fabrics	1.1016	214.27	213.71	197.56	+	0.26	+	8.46

Annexure B: Wholesale Price Indices by Major Groups & Commodities (2007-08=100)

Item and Specification	Weight	Index Numbers			% Change in Jul 2015 over	
		Jul 15	Jun 15	Jul 14	Jun 2015	Jul 2014
056 Silk & Reyon Fabrics	0.7350	183.23	181.33	165.85	+ 1.05	+ 10.48
057 Towels	0.1235	267.20	267.20	242.19	+ 0.00	+ 10.33
058 Blankets	0.0029	235.86	235.86	219.66	+ 0.00	+ 7.38
059 Bed Sheets	0.0913	256.29	256.29	242.12	+ 0.00	+ 5.85
060 Quilts	0.0019	196.84	196.84	172.42	+ 0.00	+ 14.16
061 Woolen Carpets	0.0383	132.14	132.14	132.14	+ 0.00	+ 0.00
062 Synthetic Carpets	0.0566	126.27	126.27	116.10	+ 0.00	+ 8.76
063 Hosiery Products	0.8832	220.66	220.66	204.27	+ 0.00	+ 8.02
064 Readymade Garments	1.0576	193.27	193.27	175.43	+ 0.00	+ 10.17
Leather Products	0.7115	193.00	193.00	213.10	+ 0.00	- 9.43
065 Leather Without Hair	0.2973	212.68	212.68	223.51	+ 0.00	- 4.85
066 Other Leather N.E.C	0.2567	206.27	206.27	249.44	+ 0.00	- 17.31
067 Footwears	0.1575	134.22	134.22	134.22	+ 0.00	+ 0.00
Other Transportable Goods	22.3659	185.86	187.23	215.63	- 0.73	- 13.81
068 Timber	0.0165	204.34	203.35	184.69	+ 0.49	+ 10.64
069 Printing Paper	0.4279	164.56	164.56	172.62	+ 0.00	- 4.67
070 Hard Board	0.1579	197.92	197.92	229.17	+ 0.00	- 13.64
071 Coke	0.2797	163.45	163.45	163.45	+ 0.00	+ 0.00
072 Motor Spirit	1.5336	131.39	131.39	182.40	+ 0.00	- 27.97
073 Diesel Oil	5.2664	187.52	187.52	260.69	+ 0.00	- 28.07
074 Kerosine Oil	0.2151	178.93	178.93	288.01	+ 0.00	- 37.87
075 Furnace Oil	3.2664	107.57	117.51	173.10	- 8.46	- 37.86
076 Mobil Oil	0.7114	201.05	201.05	201.17	+ 0.00	- 0.06
077 Chemicals	1.7720	192.95	194.51	193.10	- 0.80	- 0.08
078 Dyeing Material	0.1539	146.55	146.55	143.77	+ 0.00	+ 1.93
079 Fertilizers	2.8657	272.80	272.17	268.66	+ 0.23	+ 1.54
080 Pesticides	0.2763	306.30	301.98	262.86	+ 1.43	+ 16.53
081 Insecticides	0.1276	140.84	141.69	181.89	- 0.60	- 22.57
082 Paints & Varnishes	0.1916	291.69	291.69	275.71	+ 0.00	+ 5.80
083 Medicines	1.1428	145.20	145.19	144.21	+ 0.01	+ 0.69
084 Soaps & Detergents	0.8168	180.02	180.02	183.11	+ 0.00	- 1.69
085 Auto Tyres	0.2703	191.78	191.36	188.21	+ 0.22	+ 1.90
086 Plastic Products	0.4550	228.67	225.60	203.08	+ 1.36	+ 12.60
087 Glass sheets	0.2089	231.30	230.11	209.86	+ 0.52	+ 10.22
088 Other Glass Articles	0.1635	243.63	243.63	218.27	+ 0.00	+ 11.62
089 Ceramics & Sanitary Fixture	0.0244	221.02	219.58	200.07	+ 0.66	+ 10.47
090 Bricks, Blocks & Tiles	0.1566	209.47	209.47	201.73	+ 0.00	+ 3.84
091 Cement	1.8145	207.29	207.25	207.76	+ 0.02	- 0.23
092 Bed Foam	0.0006	156.67	156.67	150.83	+ 0.00	+ 3.87
093 Matches	0.0505	162.62	162.62	143.20	+ 0.00	+ 13.56
Metal Product, Machinery & Eq	8.7156	172.56	172.71	171.57	- 0.09	+ 0.58
094 Pig Iron	0.0593	128.97	128.97	128.97	+ 0.00	+ 0.00
095 Steel Bar & Sheets	1.4022	138.82	138.84	146.08	- 0.01	- 4.97
096 Pipe Fittings	0.0780	193.53	193.53	175.34	+ 0.00	+ 10.37
097 Steel Products	0.3879	173.54	173.54	170.24	+ 0.00	+ 1.94
098 Engines & Motors	0.0046	109.07	109.07	109.07	+ 0.00	+ 0.00
099 Vacuum Pumps	0.0155	115.39	115.39	115.39	+ 0.00	+ 0.00
100 Air Conditioners	0.0049	199.53	199.53	181.12	+ 0.00	+ 10.16
101 Cultivators	0.0551	219.76	219.76	226.90	+ 0.00	- 3.15
102 Chuff Cutter	0.1293	149.20	149.20	149.20	+ 0.00	+ 0.00
103 Tractors	0.0028	214.54	214.54	214.54	+ 0.00	+ 0.00
104 Lathe Machines	0.0525	208.81	208.81	208.81	+ 0.00	+ 0.00
105 Concrete Mixture	0.0107	138.83	138.83	138.83	+ 0.00	+ 0.00
106 Fridge,WashM,SewM,Fans,Iron	1.1645	198.62	198.62	195.93	+ 0.00	+ 1.37
107 Electric Wires	0.0912	187.86	187.86	179.18	+ 0.00	+ 4.84
108 Lighting Equipments	1.4431	167.30	168.19	164.95	- 0.53	+ 1.42
109 Radio & Television	0.1843	126.49	126.49	126.49	+ 0.00	+ 0.00
110 Motor Vehicles	0.0244	183.03	183.03	182.59	+ 0.00	+ 0.24
111 Motorcycles	0.2570	125.89	125.89	126.70	+ 0.00	- 0.64
112 Bicycles	3.3483	185.63	185.63	182.84	+ 0.00	+ 1.53