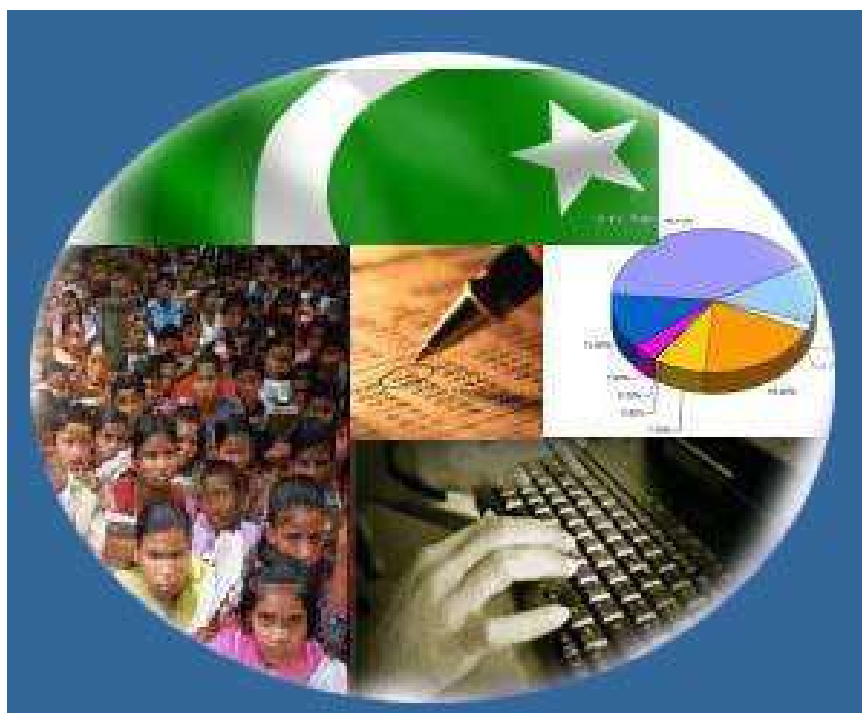




Monthly Review on Price Indices



June, 2015
(Base 2007-08)

Government of Pakistan
Statistics Division
Pakistan Bureau of Statistics
Islamabad

Inflation in Brief

1. CPI inflation, General, increased by 3.2% on year-on-year basis in June 2015 as compared to 3.2% in the previous month and by 8.2% in June 2014. On month-on-month basis, it increased by 0.6% in June 2015 as compared to increase of 0.8% in the previous month and 0.6% in June 2014.
2. Core inflation measured by non-food non-energy CPI (Core NFNE) increased by 4.6% on (YoY) basis in June 2015 as compared to 4.9% in the previous month and by 8.7% in June 2014. On (MoM) basis, it increased by 0.1% in June 2015 as compared to no change in the previous month and 0.4% in June 2014.
3. Core inflation, measured by 20% weighted trimmed mean CPI (Core Trimmed) increased by 3.8% on (YoY) basis in June 2015 as compared to 3.9% in the previous month and by 7.9% in June 2014. On (MoM) basis, it increased by 0.2% in June 2015 as compared to increase of 0.1% in the previous month and an increase of 0.3% in June 2014.
4. SPI inflation on YoY increased by 1.1% in June 2015 as compared to increase of 1.2% a month earlier and of an increase of 6.2% in June 2014. On MoM basis, it increased 1.0% in June 2015 as compared to increase of 1.3% in the month earlier and increase of 1.1% in June 2014.
5. WPI inflation on YoY basis decreased by 2.0% in June 2015 as compared to decrease of 1.8% a month earlier and an increase of 7.7% in June 2014. WPI inflation on MoM basis it increased by 1.2% in June 2015 as compared to increase of 1.1% a month earlier and increase of 1.4% in June 2014.
6. Figures 1 and 2 show graphically the data of Table 1. Table 1.1 shows "Period Average" and "YoY" percent changes in indices of three years.

Table 1: Inflation (%) (Base 2007-08)

Period	CPI						Core Inflation				SPI**		WPI	
	General		Food		Non-food		NFNE*		Trimmed		YoY	MoM	YoY	MoM
	YoY	MoM	YoY	MoM	YoY	MoM	YoY	MoM	YoY	MoM				
May 14	8.3	-0.3	7.4	-1.2	9.0	0.4	8.7	0.5	8.3	0.3	7.7	-1.5	7.3	-0.1
Jun14	8.2	0.6	7.4	1.0	8.9	0.3	8.7	0.4	7.9	0.3	6.2	1.1	7.7	1.4
Jul 14	7.9	1.7	7.0	2.7	8.5	1.0	8.3	1.1	7.6	0.8	5.9	2.0	6.6	0.5
Aug14	7.0	0.3	5.6	0.6	8.1	0.2	7.9	0.2	7.1	0.2	5.2	0.8	3.3	-0.5
Sep14	7.7	0.4	7.2	0.0	8.0	0.6	8.1	0.7	7.1	0.2	5.4	0.2	2.7	0.2
Oct 14	5.8	0.2	5.2	-0.2	6.3	0.5	7.8	0.7	6.0	0.4	4.1	0.0 ¹	1.3	-0.3
Nov 14	4.0	-0.5	2.1	-0.4	5.4	-0.6	6.9	-0.5	5.3	0.1	-0.3	-1.1	0.0 ²	-1.0
Dec 14	4.3	-1.0	3.4	-2.1	4.9	-0.2	6.7	0.1	5.2	0.0	0.8	-1.5	-0.9	-1.9
Jan 15	3.9	0.1	3.0	-0.5	4.5	0.5	6.4	0.7	4.8	0.3	1.1	-0.9	-2.4	-1.0
Feb 15	3.2	-0.9	2.1	-1.8	4.0	-0.3	6.2	0.0	4.2	-0.2	0.2	-1.0	-3.4	-1.1
Mar 15	2.5	0.2	0.5	0.5	3.9	0.0	5.9	0.1	3.8	0.0	-1.9	0.0	-3.7	0.0 ³
Apr 15	2.1	1.3	0.0	1.4	3.7	1.3	5.4	1.4	3.1	0.6	-1.6	0.4	-2.9	0.9
May 15	3.2	0.8	3.0	1.8	3.3	0.0	4.9	0.0	3.9	0.1	1.2	1.3	-1.8	1.1
Jun-15	3.2	0.6	3.2	1.2	3.2	0.2	4.6	0.1	3.8	0.2	1.1	1.0	-2.0	1.2

*NFNE is non-food non-energy, ** SPI for quintile 1 ¹ Actual figure is -0.03, displayed in rounded figure

²Actual figure is 0.02, ³Actual figure is 0.01, displayed in rounded figure

Table 1.1 : Period Average and YoY % Changes of Indices (Base 2007-08)

Index	Averages July-June % Changes			Jun over June % Changes		
	2014-15	2013-14	2012-13	2014-15	2013-14	2012-13
CPI	4.53	8.62	7.36	3.16	8.22	5.85
SPI	1.74	9.30	7.77	1.12	6.24	7.91
WPI	-0.30	8.15	7.35	-1.97	7.73	5.20

Figure 1: CPI Inflation YoY, Special Indices

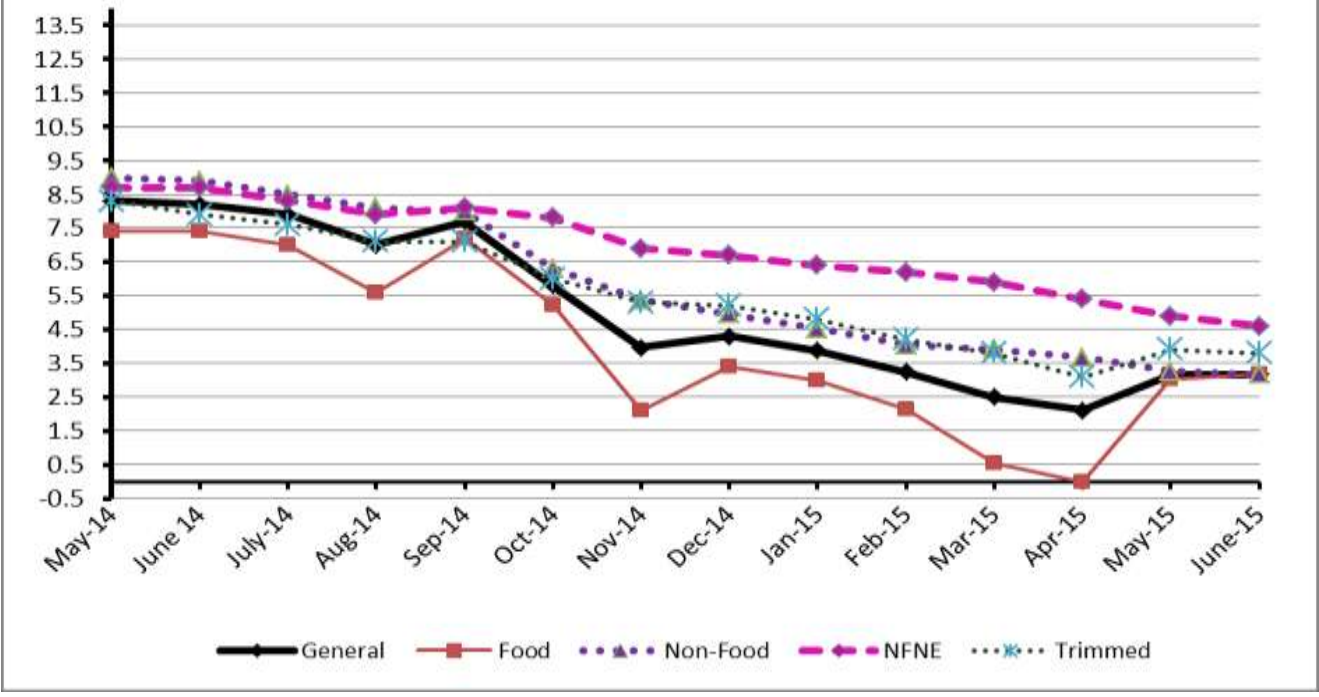
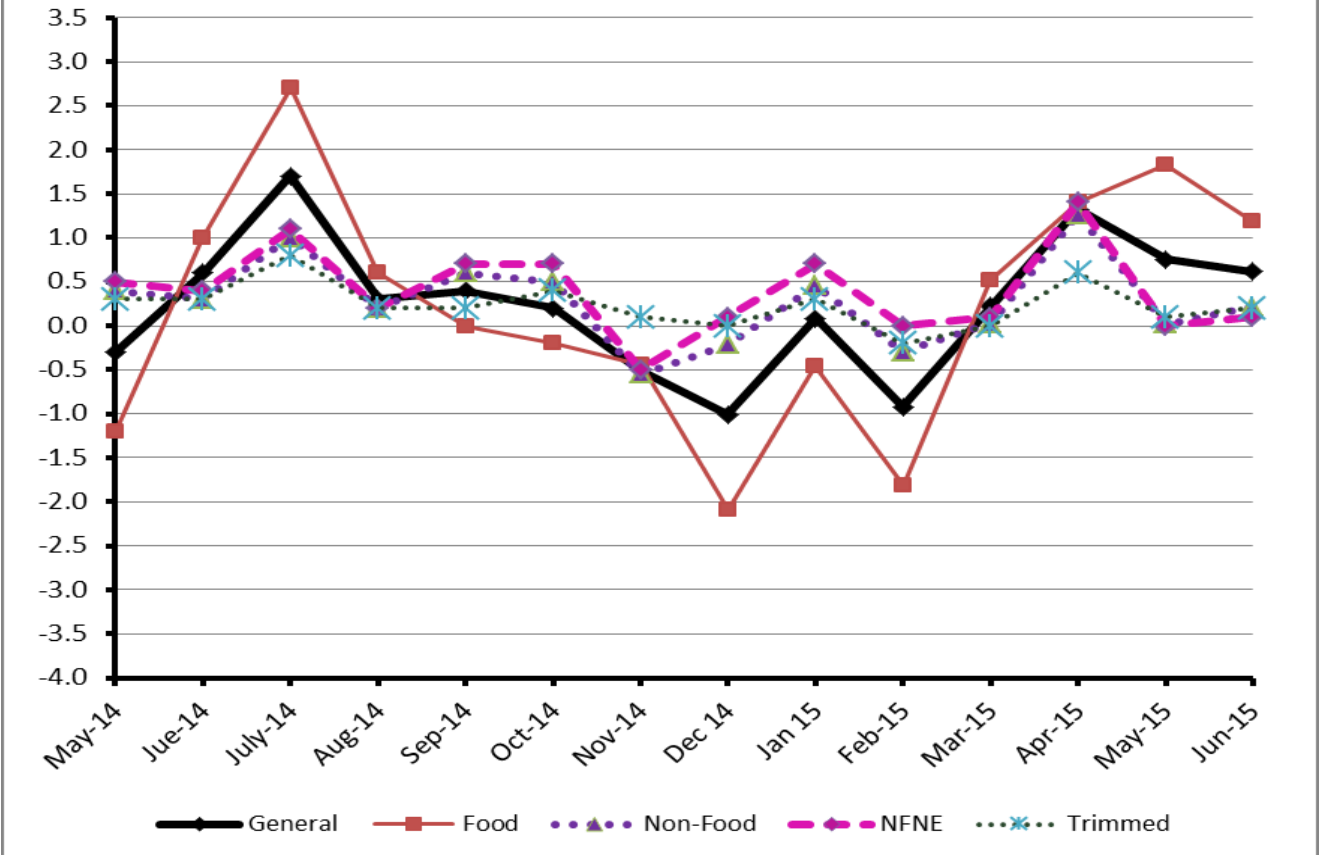


Figure 2: CPI Inflation MoM, Special Indices



II. Consumer Price Index (CPI)

The Consumer Price Index of June, 2015 has increased by 0.62 over May, 2015 and 3.16% over corresponding month of the last year, i.e. June 2014.

Table 2 : Consumer Price Index by Group of Commodities and Services (Base 2007-08)

No	Group	Group Weight (%)	Indices			% Change June 2015 Over		Impact (In % points) June 2015 Over	
			June 2015	May 2015	June 2014	May 2015	June 2014	May 2015	June 2014
	General	100.00	200.89	199.66	194.74	0.62	3.16	0.62	3.16
1.	Food & Non-alcoholic Bev.	34.83	219.66	218.35	214.50	0.60	2.41	0.23	0.92
	<i>Non-perishable Food Items</i>	29.84	217.77	215.38	212.56	1.11	2.45	0.36	0.80
	<i>Perishable Food Items</i>	4.99	230.97	236.07	226.07	-2.16	2.17	-0.13	0.13
2.	Alcoholic Bev.& Tobacco	1.41	304.76	268.97	259.28	13.31	17.54	0.25	0.33
3.	Clothing & Footwear	7.57	218.56	217.58	206.96	0.45	5.60	0.04	0.45
4.	Housing, Water, Electricity, Gas & Fuels	29.41	177.76	177.75	169.53	0.01	4.85	0.00	1.24
5.	Furnishing & Household Equipment Maintenance	4.21	211.59	210.84	204.09	0.36	3.67	0.02	0.16
6.	Health	2.19	178.55	178.22	172.79	0.19	3.33	0.00	0.06
7.	Transport	7.20	178.59	176.82	195.27	1.00	-8.54	0.06	-0.62
8.	Communication	3.22	130.30	130.29	129.88	0.01	0.32	0.00	0.01
9.	Recreation & Culture	2.02	192.98	192.98	188.74	0.00	2.25	0.00	0.04
10.	Education	3.94	209.17	209.17	190.90	0.00	9.57	0.00	0.37
11.	Restaurants & Hotels	1.23	249.24	248.45	238.76	0.32	4.39	0.00	0.07
12.	Miscellaneous	2.76	223.37	223.08	215.12	0.13	3.84	0.00	0.12

Main contributors to month-on-month and year-on-year percentage changes are given below and detail is given in Annexure A.

1. **Month-on-month** Top few commodities which varied from previous month i.e. May 2015 are given below:-

Food Items Increased: Potatoes (31.72%), Tomatoes (22.58%), Chicken (14.91%), Cigarettes (13.45%), Besan (8.32%), Pulse Gram (7.07%), Sugar (4.80%), Eggs (4.28%), Pulse Mash (3.49%), Gur (2.98%) and Gram Whole (2.43%).

Decreased: Fresh Vegetables (11.11%), Fresh Fruits (3.11%), Wheat Flour (1.60%), Rice (1.26%), and Wheat (1.07%).

Non-food Items Increased: Kerosene Oil (5.53%), Motor Fuel (2.71%), Tailoring (1.74%) and Furniture (1.10%).

Decreased: Firewood Whole (0.59%).

2. **Year-on-Year:** Top few commodities which varied from previous year i.e. June 2014 are given below:-

Food Items Increased: Tomatoes (79.61%), Onions (43.46%), Pulse Gram (26.08%), Besan (23.42%), Pulse Mash (21.31%), Chicken (20.33%), Cigarettes (17.68%), Sugar (12.99%), Tea (11.67%) and Fresh Vegetables (10.31%).

Decreased: Potatoes (59.12%), Cooking Oil (11.47%), Vegetable Ghee (11.27%) and Rice (9.76%).

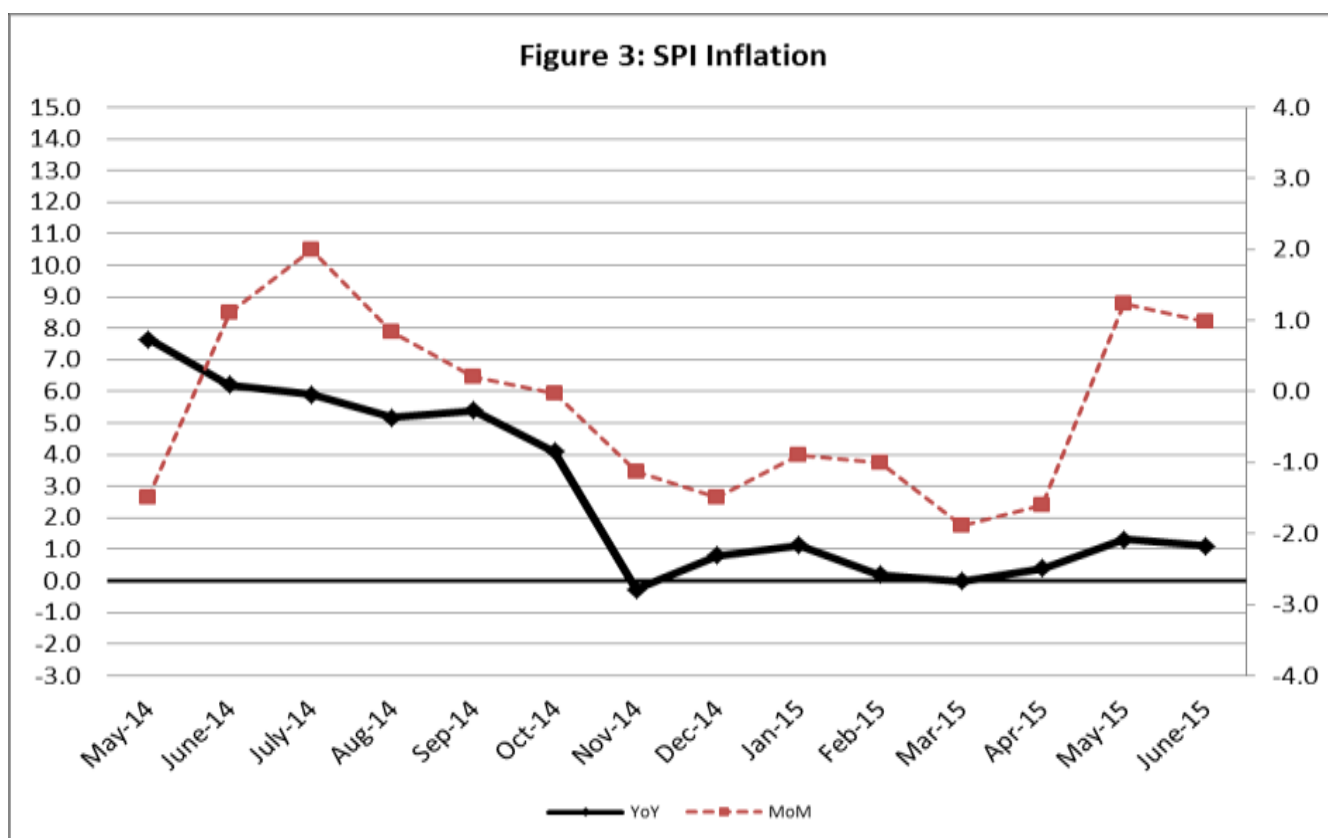
Non-food Items Increased: Motor Vehicle Tax (36.71%), Tailoring (11.35%), Woolen Readymade Garments (10.31%) and Sewing Needles & Dry Cells (10.12%).

Decreased: Kerosene Oil (19.83%), Motor Fuel (17.25%) and Transport Services (6.18%).

III. Sensitive Price Indicator

Quintile-wise percentage changes YoY and MoM are given below in Table 3. The series from May 2014 to June 2015 is also graphed below in Figure 3.

Table 3 : Sensitive Price Indicator (Base 2007-08)						
Quintiles	Indices			% Change June 2015 over		
	June 2015	May 2015	June 2014	May 2015	June 2014	
1	205.34	203.33	203.07	0.99	1.12	
2	211.83	209.62	209.47	1.05	1.13	
3	215.43	212.99	212.49	1.15	1.38	
4	217.37	214.56	214.79	1.31	1.20	
5	214.82	211.53	214.05	1.56	0.36	
Combined	214.29	211.48	212.40	1.33	0.89	



IV. Wholesale Price Index

The Wholesale Price Index for June 2015 increased by 1.18% over May, 2015. It decreased by 1.97% over the corresponding month of the last year. YoY and MoM movements, from May 2014 to June 2015 are also graphed below in Figure 4.

Table 4 : Wholesale Price Index by Group of Commodities (Base 2007-08)

No.	Group	Group Weight (%)	Indices			% Change June, 2015 over		Impact (in %age points) June, 2015 over	
			June 2015	May 2015	June 2014	May 2015	June 2014	May 2015	June 2014
	General	100.00	210.37	207.92	214.60	1.18	-1.97	1.18	-1.97
1.	Agriculture, Forestry & Fishery Products	25.77	227.46	224.47	228.53	1.33	-0.47	0.37	-0.13
2.	Ores & Minerals, Electricity, Gas & Water	12.04	245.32	245.36	242.45	-0.02	1.18	0.00	0.16
3.	Food Products, Beverages & Tobacco, Textiles, Apparel & Leather Products	31.11	209.87	206.76	204.31	1.50	2.72	0.47	0.81
	i. Food Products, Bev. & Tobacco	20.07	222.54	218.01	209.08	2.08	6.44	0.44	1.26
	ii. Textiles and Apparel	10.33	186.42	185.42	193.75	0.54	-3.78	0.05	-0.35
	iii. Leather Products	0.71	193.00	199.09	222.94	-3.06	-13.43	-0.02	-0.10
4.	Other Transportable Goods except Metal Products, Machinery & Equipment	22.37	187.23	184.03	214.75	1.74	-12.81	0.34	-2.87
5.	Metal Products, Machinery & Equipment	8.72	172.71	172.74	171.26	-0.02	0.85	0.00	0.06

Main contributors to month-on-month and year-on-year percentage changes are given below and detail is given in Annexure B.

- Month-on-month** Top few commodities which varied from previous month i.e. May, 2015 are given below:-

Increased: Potatoes (35.98%), Tobacco Product (22.69%), Stimulant & Spice Crops (17.81%), Sugar Confectionary (15.41%), Poultry (13.36%), Other Cereal Flour (11.92%), Fresh Fruits (9.67%), Eggs (7.48%), Bajra (5.80%), Diesel Oil (5.15%), Fish (4.91%), Motor Spirit (4.72%), Sugar (3.93%), Cotton Seeds (3.76%) and Furnace Oil (3.02%).

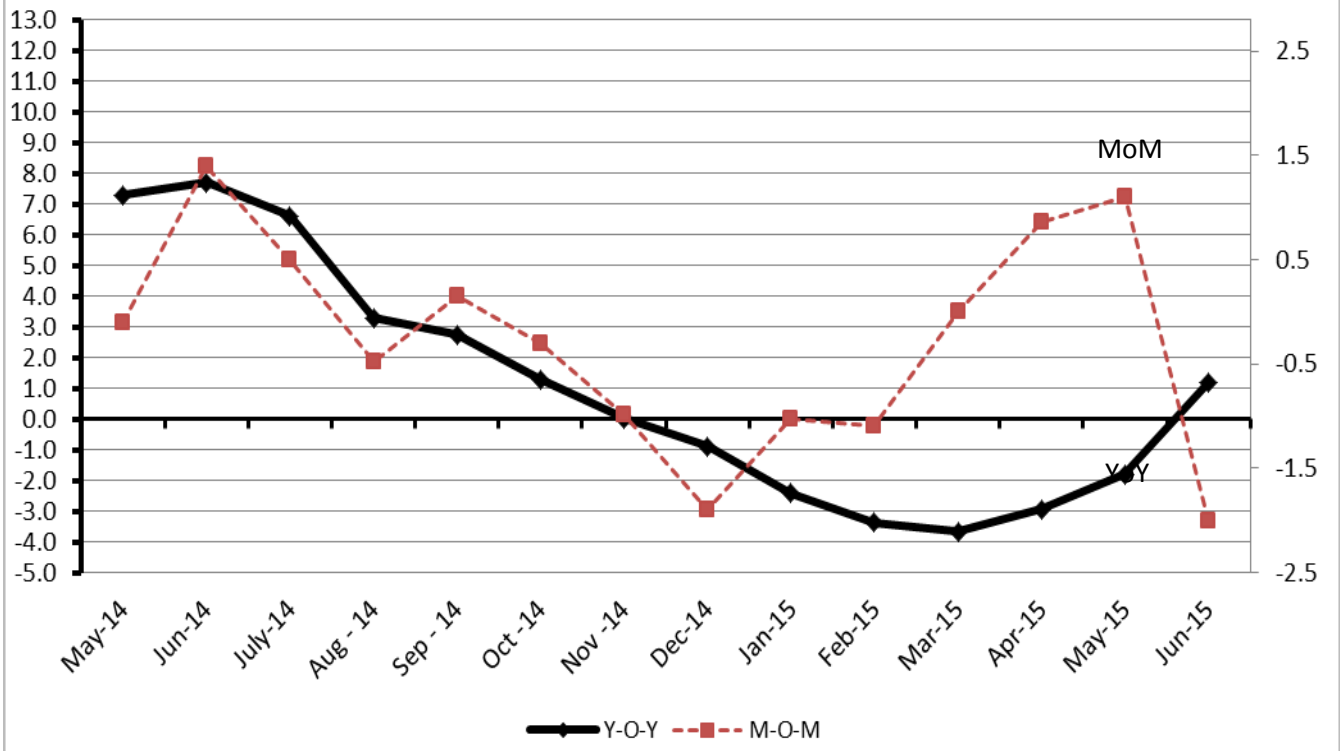
Decreased: Vegetables (7.71%), Leather without Hair (4.19%) and Oil Cakes (3.77%),

Year-on-year Top few commodities which varied from previous year i.e. June, 2014 are given below:-

Increased: Other Cereal Flour (39.62%), Vegetables (30.39%), Tobacco Products (22.69%), Pesticides (18.76%), Fish (18.29%), Poultry (17.17%), Pulses (16.73%), Woolen Carpets (16.23%), Bajra (15.84%) and Sugar Confectionary (15.41%).

Decreased: Potatoes (69.41%), Kerosene Oil (37.87%), Furnace Oil (31.68%), Diesel (28.07%), Motor Spirit (27.97%), Other Leather (25.46%), Stimulant & Spice Crops (25.39%), Insecticides (22.10%), Fibre Crops (19.48%) and Cotton Yarn (14.54%).

Figure 4: WPI Inflation



Annexure A: Consumer Price Index Numbers by Commodity Groups & Commodities (2007-08=100)

Item and Specification	Weight	Index Numbers			% Change in Jun 2015 over	
		Jun 15	May 15	Jun 14	May 2015	Jun 2014
General	100.0000	200.89	199.66	194.74	+ 0.62	+ 3.16
Food and non-alcoholic Bevera	34.8343	219.66	218.32	214.50	+ 0.61	+ 2.41
01 Wheat	0.3477	193.72	195.82	200.35	- 1.07	- 3.31
02 Wheat Flour	4.1648	207.87	211.25	213.46	- 1.60	- 2.62
03 Wheat Product	0.0959	211.77	212.65	215.08	- 0.41	- 1.54
04 Besan	0.1500	214.84	198.34	174.07	+ 8.32	+ 23.42
05 Rice	1.5821	175.16	177.40	194.10	- 1.26	- 9.76
06 Cereals	0.1563	241.01	240.96	235.80	+ 0.02	+ 2.21
07 Bakery & Confectionary	1.1550	208.28	208.20	203.91	+ 0.04	+ 2.14
08 Nimco	0.4574	239.40	239.02	230.82	+ 0.16	+ 3.72
09 Meat	2.4303	247.52	246.71	237.75	+ 0.33	+ 4.11
10 Chicken	1.3596	240.58	209.37	199.93	+ 14.91	+ 20.33
11 Fish	0.2970	213.54	214.25	222.36	- 0.33	- 3.97
12 Milk Fresh	6.6800	254.57	251.91	242.98	+ 1.06	+ 4.77
13 Milk Products	0.6338	246.89	244.99	238.58	+ 0.78	+ 3.48
14 Milk Powder	0.1129	226.31	226.10	221.55	+ 0.09	+ 2.15
15 Eggs	0.4555	172.26	165.19	167.66	+ 4.28	+ 2.74
16 Mustard Oil	0.0952	151.35	152.12	158.12	- 0.51	- 4.28
17 Cooking Oil	1.7538	143.39	144.64	161.96	- 0.86	- 11.47
18 Vegetable Ghee	2.0714	140.50	141.19	158.34	- 0.49	- 11.27
19 Dry Fruits	0.2543	254.52	252.03	234.85	+ 0.99	+ 8.38
20 Fresh Fruits	1.8649	245.63	253.52	237.43	- 3.11	+ 3.45
21 Pulse Masoor	0.2712	195.23	194.06	180.68	+ 0.60	+ 8.05
22 Pulse Moong	0.2336	311.53	314.45	301.11	- 0.93	+ 3.46
23 Pulse Mash (Washed)	0.2098	253.97	245.40	209.35	+ 3.49	+ 21.31
24 Pulse Gram	0.2361	213.03	198.97	168.96	+ 7.07	+ 26.08
25 Gram Whole	0.1616	193.36	188.78	179.88	+ 2.43	+ 7.49
26 Beans	0.0269	236.80	233.82	240.36	+ 1.27	- 1.48
27 Potatoes	0.4699	165.00	125.27	403.63	+ 31.72	- 59.12
28 Onion	0.5340	279.84	281.38	195.07	- 0.55	+ 43.46
29 Tomatoes	0.4419	209.01	170.51	116.37	+ 22.58	+ 79.61
30 Fresh Vegetables	1.6802	223.39	251.32	202.52	- 11.11	+ 10.31
31 Sugar	1.0445	220.70	210.60	195.32	+ 4.80	+ 12.99
32 Gur	0.0220	272.24	264.36	253.67	+ 2.98	+ 7.32
33 Honey	0.0446	303.39	303.39	284.59	+ 0.00	+ 6.61
34 SweetMeat	0.2483	235.81	234.89	226.62	+ 0.39	+ 4.06
35 Beverages	1.1990	213.32	209.53	205.75	+ 1.81	+ 3.68
36 Jam, Tomato Ketchup & Pickles	0.2454	208.86	207.96	194.91	+ 0.43	+ 7.16
37 Condiments	0.2656	257.93	258.07	246.44	- 0.05	+ 4.66
38 Spices	0.5441	236.20	235.30	227.28	+ 0.38	+ 3.92
39 Tea	0.8377	231.98	228.63	207.74	+ 1.47	+ 11.67
Alcoholic Beverages, Tobacco	1.4135	304.76	268.97	259.28	+ 13.31	+ 17.54
40 Cigarettes	1.3906	306.27	269.95	260.26	+ 13.45	+ 17.68
41 Betel Leaves & Nuts	0.0229	213.15	209.62	199.83	+ 1.68	+ 6.67
Clothing and footwear	7.5708	218.56	217.58	206.96	+ 0.45	+ 5.60
42 Cotton Cloth	1.7286	213.01	212.76	201.94	+ 0.12	+ 5.48
43 Woolen Cloth	0.8759	234.23	234.13	227.29	+ 0.04	+ 3.05
44 Readymade Garments	0.9739	222.33	220.64	206.29	+ 0.77	+ 7.78
45 Woolen Readymade Garments	0.3964	240.86	240.86	218.34	+ 0.00	+ 10.31
46 Hosiery	0.5094	230.96	229.66	219.18	+ 0.57	+ 5.37
47 Dopatta	0.4412	232.70	232.33	225.05	+ 0.16	+ 3.40
48 Cleaning and Laundry	0.2110	238.32	237.72	228.30	+ 0.25	+ 4.39
49 Tailoring	0.8840	275.40	270.70	247.32	+ 1.74	+ 11.35
50 Footwear	1.5504	164.64	164.56	163.50	+ 0.05	+ 0.70
Housing, water, Elec., Gas an	29.4149	177.76	177.75	169.53	+ 0.01	+ 4.85
51 House Rent	21.8149	166.88	166.88	157.05	+ 0.00	+ 6.26
52 Construction Input Items	0.5623	239.17	238.93	232.72	+ 0.10	+ 2.77
53 Construction Wage Rates	0.3331	213.11	211.69	199.53	+ 0.67	+ 6.81
54 Water Supply	0.4971	149.92	149.92	149.92	+ 0.00	+ 0.00
55 Electricity	4.3985	231.52	231.52	227.44	+ 0.00	+ 1.79
56 Gas	1.5756	143.81	143.81	143.81	+ 0.00	+ 0.00
57 Kerosene Oil	0.0057	223.49	211.77	278.77	+ 5.53	- 19.83
58 Firewood Whole	0.2277	272.98	274.59	265.16	- 0.59	+ 2.95
Furnishing and household equi	4.2082	211.59	210.84	204.09	+ 0.36	+ 3.67

Annexure A: Consumer Price Index Numbers by Commodity Groups & Commodities (2007-08=100)

Item and Specification	Weight	Index Numbers			% Change in Jun 2015 over	
		Jun 15	May 15	Jun 14	May 2015	Jun 2014
59 Furniture	0.3315	205.27	203.03	194.71	+ 1.10	+ 5.42
60 Household Textiles	0.6489	209.43	207.80	199.85	+ 0.78	+ 4.79
61 Household Equipment	0.5936	175.10	174.36	170.58	+ 0.42	+ 2.65
62 Utensils	0.3212	214.29	213.57	205.72	+ 0.34	+ 4.17
63 Plastic Products	0.2547	202.65	201.69	195.76	+ 0.48	+ 3.52
64 Washing Soaps & Detergents	0.7893	222.38	221.82	220.60	+ 0.25	+ 0.81
65 Sewing Needle & Dr Cell	0.1496	198.97	198.97	180.69	+ 0.00	+ 10.12
66 Household Servant	1.0432	229.23	229.23	219.71	+ 0.00	+ 4.33
67 Marriage Hall Charges	0.0762	231.83	231.83	224.03	+ 0.00	+ 3.48
Health	2.1868	178.55	178.22	172.79	+ 0.19	+ 3.33
68 Drugs & Medicines	1.2667	148.37	148.34	145.57	+ 0.02	+ 1.92
69 Medical Equipments	0.0080	226.26	225.36	219.76	+ 0.40	+ 2.96
70 Doctor (MBBS) Clinic Fee	0.5904	242.85	241.97	232.41	+ 0.36	+ 4.49
71 Medical Tests	0.3217	178.21	177.69	169.35	+ 0.29	+ 5.23
Transport	7.2023	178.59	176.82	195.27	+ 1.00	- 8.54
72 Motor Vehicles	0.6630	163.41	163.41	160.00	+ 0.00	+ 2.13
73 Motor Vehicle Accessories	0.2439	226.28	225.89	228.31	+ 0.17	- 0.89
74 Motor Fuel	3.0269	154.52	150.45	186.72	+ 2.71	- 17.25
75 Mechanical Service	0.4552	216.12	215.35	206.25	+ 0.36	+ 4.79
76 Motor Vehicle Tax	0.1099	210.18	210.18	153.74	+ 0.00	+ 36.71
77 Transport Services	2.7034	197.35	197.35	210.36	+ 0.00	- 6.18
Communication	3.2198	130.30	130.29	129.88	+ 0.01	+ 0.32
78 Postal Services	0.0662	227.95	227.44	215.89	+ 0.22	+ 5.59
79 Communication & Apparatus	3.1536	128.25	128.25	128.07	+ 0.00	+ 0.14
Recreation and culture	2.0227	192.98	192.98	188.74	+ 0.00	+ 2.25
80 Recreation & Culture	0.8634	128.25	128.25	127.44	+ 0.00	+ 0.64
81 Text Books	0.5706	290.62	290.62	279.73	+ 0.00	+ 3.89
82 Newspapers	0.1934	175.42	175.42	175.42	+ 0.00	+ 0.00
83 Stationery	0.3953	201.99	201.99	197.77	+ 0.00	+ 2.13
Education	3.9431	209.17	209.17	190.90	+ 0.00	+ 9.57
84 Education	3.9431	209.17	209.17	190.90	+ 0.00	+ 9.57
Restaurants and hotels	1.2286	249.24	248.45	238.76	+ 0.32	+ 4.39
85 Readymade Food	1.2286	249.24	248.45	238.76	+ 0.32	+ 4.39
Misc. goods and services	2.7550	223.37	223.08	215.12	+ 0.13	+ 3.84
86 Personal Care	1.4935	206.85	206.16	199.48	+ 0.33	+ 3.69
87 Cosmetics	0.3853	190.66	190.66	182.74	+ 0.00	+ 4.33
88 Blades	0.0322	185.88	185.88	184.61	+ 0.00	+ 0.69
89 Personal Equipments	0.8440	268.97	269.23	258.73	- 0.10	+ 3.96

Annexure B: Wholesale Price Indices by Major Groups & Commodities

(2007-08=100)

Item and Specification	Weight	Index Numbers			% Change in Jun 2015 over		
		Jun 15	May 15	Jun 14	May 2015	Jun 2014	
General	100.0000	210.37	207.92	214.60	+	1.18	- 1.97
Agriculture Forestry & Fisher	25.7674	227.46	224.47	228.53	+	1.33	- 0.47
001 Wheat	0.6297	194.99	199.19	205.99	-	2.11	- 5.34
002 Maize	0.6764	196.59	198.78	189.74	-	1.10	+ 3.61
003 Rice	2.4413	163.26	163.53	180.08	-	0.17	- 9.34
004 Sorghum / Jowar	0.0214	314.96	321.25	316.79	-	1.96	- 0.58
005 Millet / Bajra	0.0374	200.42	189.44	173.02	+	5.80	+ 15.84
006 Vegetables	1.2441	267.36	289.71	205.05	-	7.71	+ 30.39
007 Fresh Fruits	1.5144	287.79	262.42	283.76	+	9.67	+ 1.42
008 Dry Fruits	0.2478	240.69	238.89	219.20	+	0.75	+ 9.80
009 Cotton Seeds	1.1511	240.08	231.37	219.90	+	3.76	+ 9.18
010 Other Oil Seeds	0.0722	161.27	161.07	182.36	+	0.12	- 11.57
011 Edible Roots / Potatoes	0.2540	144.68	106.40	472.92	+	35.98	- 69.41
012 Stimulant & Spice Crops	0.1634	352.58	299.29	472.58	+	17.81	- 25.39
013 Pulses	0.4901	233.89	229.44	200.37	+	1.94	+ 16.73
014 Sugar Crops	1.0725	286.29	286.29	267.92	+	0.00	+ 6.86
015 Fibre Crops	5.3169	177.20	178.69	220.08	-	0.83	- 19.48
016 Unmanufactured Tobacco	0.0742	220.89	219.79	196.08	+	0.50	+ 12.65
017 Poultry	0.5633	243.62	214.91	207.92	+	13.36	+ 17.17
018 Raw Milk from Bovine Animals	7.0279	252.90	252.55	240.49	+	0.14	+ 5.16
019 Eggs	0.5034	175.64	163.42	166.88	+	7.48	+ 5.25
020 Raw Animal Materials / Wool	0.0351	174.22	174.38	157.03	-	0.09	+ 10.95
021 Hides & Fur Skins, Raw	0.4834	156.85	158.90	145.85	-	1.29	+ 7.54
022 Fuel Wood in Logs	0.0179	259.09	259.09	243.47	+	0.00	+ 6.42
023 Fish Live Fresh or Chilled	1.7295	296.17	282.30	250.37	+	4.91	+ 18.29
Ores/Minerals, Elec., Gas & W	12.0389	245.32	245.36	242.45	-	0.02	+ 1.18
024 Coal not Agglomerated	0.7508	223.53	223.53	223.53	+	0.00	+ 0.00
025 Natural Gas Liquified	5.7385	199.99	200.10	201.86	-	0.05	- 0.93
026 Salt & Pure Sodium Chloride	0.0584	252.31	248.84	243.18	+	1.39	+ 3.75
027 Electrical Energy	5.4912	295.61	295.61	287.44	+	0.00	+ 2.84
Food, Beverages, Tobacco, Textil	31.1122	209.87	206.76	204.31	+	1.50	+ 2.72
Food Products, Beverages &	20.0718	222.54	218.01	209.08	+	2.08	+ 6.44
028 Meat of Animals	3.4559	262.20	262.20	243.10	+	0.00	+ 7.86
029 Vegetables & Fruit Juice	0.0058	199.38	199.38	194.02	+	0.00	+ 2.76
030 Dried Fruits & Nuts	0.1733	228.54	229.34	217.80	-	0.35	+ 4.93
031 Fruit Juices	0.3880	175.80	174.61	170.89	+	0.68	+ 2.87
032 Vegetable Oils Refined	1.9242	153.66	153.75	165.47	-	0.06	- 7.14
033 Vegetable Ghee	1.5632	122.48	122.65	140.01	-	0.14	- 12.52
034 Oil Cakes	0.9611	198.51	206.29	217.25	-	3.77	- 8.63
035 Processed Liquid Milk	4.4437	251.52	251.52	223.02	+	0.00	+ 12.78
036 Milk & Cream in Solid Form	0.0316	220.46	220.36	211.32	+	0.05	+ 4.33
037 Ice Cream	0.0047	219.91	219.91	214.21	+	0.00	+ 2.66
038 Dairy Products N.E.C	0.0117	243.80	243.80	235.64	+	0.00	+ 3.46
039 Wheat Flour	2.3034	189.05	192.24	196.01	-	1.66	- 3.55
040 Other Cereal Flour	0.0604	194.60	173.87	139.38	+	11.92	+ 39.62
041 Sugar Refined	1.7975	235.88	226.96	208.70	+	3.93	+ 13.02
042 Chocolate	0.0139	99.19	99.19	99.19	+	0.00	+ 0.00
043 Sugar Confectionary	0.0738	118.04	102.28	102.28	+	15.41	+ 15.41
044 Coffee & Tea	0.7303	206.65	204.59	185.89	+	1.01	+ 11.17
045 Spices	0.1449	189.97	189.82	191.67	+	0.08	- 0.89
046 Other Food Products	0.0336	292.02	292.02	293.72	+	0.00	- 0.58
047 Mineral Water	0.0207	187.86	187.86	185.23	+	0.00	+ 1.42
048 Beverages	0.6303	171.95	171.95	166.38	+	0.00	+ 3.35
049 Tobacco Products	1.2998	356.45	290.52	290.52	+	22.69	+ 22.69
Textiles & Apparels	10.3289	186.42	185.42	193.75	+	0.54	- 3.78
050 Cotton Yarn	5.2491	171.27	170.81	200.42	+	0.27	- 14.54
051 Nylon Yarn	0.1719	150.22	150.22	162.34	+	0.00	- 7.47
052 Blended Yarn	0.1689	189.54	184.93	192.59	+	2.49	- 1.58
053 Woven Fabrics	0.0128	258.39	258.39	226.82	+	0.00	+ 13.92
054 Cotton Fabrics	0.6343	201.34	201.34	196.81	+	0.00	+ 2.30
055 Other Fabrics	1.1016	213.71	213.71	197.56	+	0.00	+ 8.17
056 Silk & Reyon Fabrics	0.7350	181.33	181.33	165.85	+	0.00	+ 9.33
057 Towels	0.1235	267.20	265.62	242.19	+	0.59	+ 10.33

Annexure B: Wholesale Price Indices by Major Groups & Commodities (2007-08=100)

Item and Specification	Weight	Index Numbers			% Change in Jun 2015 over	
		Jun 15	May 15	Jun 14	May 2015	Jun 2014
058 Blankets	0.0029	235.86	235.86	219.66	+ 0.00	+ 7.38
059 Bed Sheets	0.0913	256.29	256.29	242.12	+ 0.00	+ 5.85
060 Quilts	0.0019	196.84	196.84	172.42	+ 0.00	+ 14.16
061 Woolen Carpets	0.0383	132.14	132.14	113.69	+ 0.00	+ 16.23
062 Synthetic Carpets	0.0566	126.27	126.27	116.10	+ 0.00	+ 8.76
063 Hosiery Products	0.8832	220.66	218.08	202.13	+ 1.18	+ 9.17
064 Readymade Garments	1.0576	193.27	188.82	169.33	+ 2.36	+ 14.14
Leather Products	0.7115	193.00	199.09	222.94	- 3.06	- 13.43
065 Leather Without Hair	0.2973	212.68	221.97	223.51	- 4.19	- 4.85
066 Other Leather N.E.C	0.2567	206.27	212.39	276.72	- 2.88	- 25.46
067 Footwears	0.1575	134.22	134.22	134.22	+ 0.00	+ 0.00
Other Transportable Goods	22.3659	187.23	184.03	214.75	+ 1.74	- 12.81
068 Timber	0.0165	203.35	202.05	182.14	+ 0.64	+ 11.64
069 Printing Paper	0.4279	164.56	164.56	172.62	+ 0.00	- 4.67
070 Hard Board	0.1579	197.92	197.92	229.17	+ 0.00	- 13.64
071 Coke	0.2797	163.45	163.45	163.45	+ 0.00	+ 0.00
072 Motor Spirit	1.5336	131.39	125.47	182.40	+ 4.72	- 27.97
073 Diesel Oil	5.2664	187.52	178.33	260.69	+ 5.15	- 28.07
074 Kerosine Oil	0.2151	178.93	178.93	288.01	+ 0.00	- 37.87
075 Furnace Oil	3.2664	117.51	114.06	172.01	+ 3.02	- 31.68
076 Mobil Oil	0.7114	201.05	200.65	200.28	+ 0.20	+ 0.38
077 Chemicals	1.7720	194.51	194.51	189.08	+ 0.00	+ 2.87
078 Dyeing Material	0.1539	146.55	146.55	143.77	+ 0.00	+ 1.93
079 Fertilizers	2.8657	272.17	272.00	267.48	+ 0.06	+ 1.75
080 Pesticides	0.2763	301.98	293.74	254.27	+ 2.81	+ 18.76
081 Insecticides	0.1276	141.69	141.69	181.89	+ 0.00	- 22.10
082 Paints & Varnishes	0.1916	291.69	291.69	275.71	+ 0.00	+ 5.80
083 Medicines	1.1428	145.19	145.19	142.22	+ 0.00	+ 2.09
084 Soaps & Detergents	0.8168	180.02	180.40	183.11	- 0.21	- 1.69
085 Auto Tyres	0.2703	191.36	191.36	188.21	+ 0.00	+ 1.67
086 Plastic Products	0.4550	225.60	225.35	203.08	+ 0.11	+ 11.09
087 Glass sheets	0.2089	230.11	230.11	209.86	+ 0.00	+ 9.65
088 Other Glass Articles	0.1635	243.63	243.63	218.27	+ 0.00	+ 11.62
089 Ceramics & Sanitary Fixture	0.0244	219.58	219.45	201.75	+ 0.06	+ 8.84
090 Bricks, Blocks & Tiles	0.1566	209.47	210.12	200.57	- 0.31	+ 4.44
091 Cement	1.8145	207.25	207.25	207.76	+ 0.00	- 0.25
092 Bed Foam	0.0006	156.67	156.67	150.83	+ 0.00	+ 3.87
093 Matches	0.0505	162.62	162.62	143.20	+ 0.00	+ 13.56
Metal Product, Machinery & Eq	8.7156	172.71	172.74	171.26	- 0.02	+ 0.85
094 Pig Iron	0.0593	128.97	128.97	128.97	+ 0.00	+ 0.00
095 Steel Bar & Sheets	1.4022	138.84	139.25	144.30	- 0.29	- 3.78
096 Pipe Fittings	0.0780	193.53	191.94	175.34	+ 0.83	+ 10.37
097 Steel Products	0.3879	173.54	173.88	170.24	- 0.20	+ 1.94
098 Engines & Motors	0.0046	109.07	109.07	109.07	+ 0.00	+ 0.00
099 Vacuum Pumps	0.0155	115.39	115.39	115.39	+ 0.00	+ 0.00
100 Air Conditioners	0.0049	199.53	199.53	181.12	+ 0.00	+ 10.16
101 Cultivators	0.0551	219.76	219.76	226.90	+ 0.00	- 3.15
102 Chuff Cutter	0.1293	149.20	149.20	149.20	+ 0.00	+ 0.00
103 Tractors	0.0028	214.54	214.54	214.54	+ 0.00	+ 0.00
104 Lathe Machines	0.0525	208.81	208.81	208.81	+ 0.00	+ 0.00
105 Concrete Mixture	0.0107	138.83	138.83	138.83	+ 0.00	+ 0.00
106 Fridge, WashM, SewM, Fans, Iron	1.1645	198.62	198.30	195.75	+ 0.16	+ 1.47
107 Electric Wires	0.0912	187.86	187.86	179.18	+ 0.00	+ 4.84
108 Lighting Equipments	1.4431	168.19	168.19	164.95	+ 0.00	+ 1.96
109 Radio & Television	0.1843	126.49	126.49	126.49	+ 0.00	+ 0.00
110 Motor Vehicles	0.0244	183.03	183.03	182.59	+ 0.00	+ 0.24
111 Motorcycles	0.2570	125.89	125.89	126.70	+ 0.00	- 0.64
112 Bicycles	3.3483	185.63	185.63	182.84	+ 0.00	+ 1.53