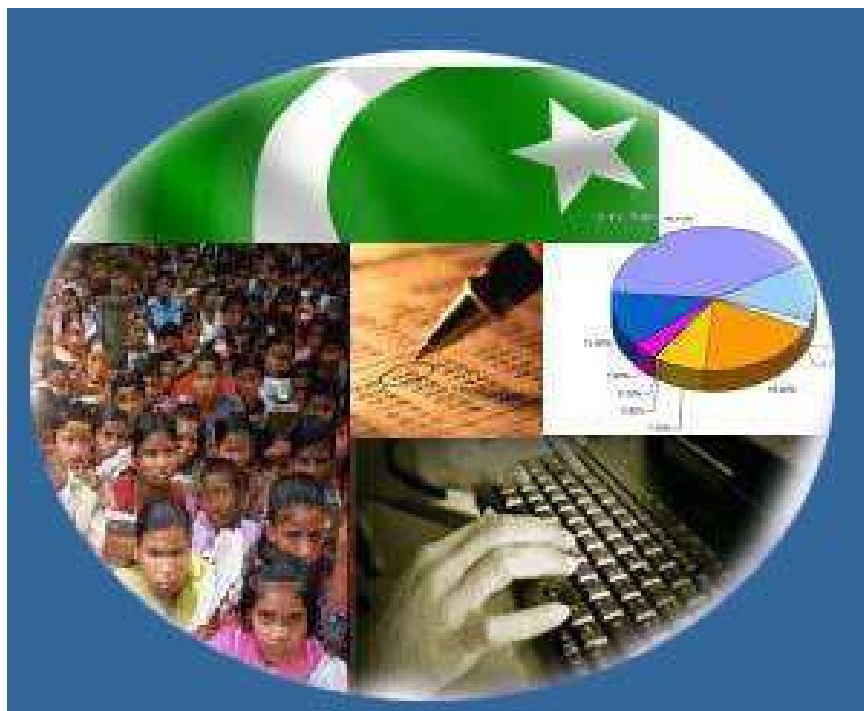




Monthly Review on Price Indices



April, 2015
(Base 2007-08)

Government of Pakistan
Statistics Division
Pakistan Bureau of Statistics
Islamabad

Inflation in Brief

1. CPI inflation, General, increased by 2.1% on year-on-year basis in April 2015 as compared to 2.5% in the previous month and by 9.2% in April 2014. On month-on-month basis, it increased by 1.3% in April 2015 as compared to increase of 0.2% in the previous month and 1.7% in April 2014.
2. Core inflation measured by non-food non-energy CPI (Core NFNE) increased by 5.4% on (YoY) basis in April 2015 as compared to 5.9% in the previous month and by 8.5% in April 2014. On (MoM) basis, it increased by 1.4% in April 2015 as compared to 0.1% in the previous month and 1.9% in April 2014.
3. Core inflation, measured by 20% weighted trimmed mean CPI (Core Trimmed) increased by 3.1% on (YoY) basis in April 2015 as compared to 3.8% in the previous month and by 9.0% in April 2014. On (MoM) basis, it increased by 0.6% in April 2015 as compared to no change in the previous month and an increase of 0.9% in April 2014.
4. SPI inflation on YoY decreased by 1.6% in April 2015 as compared to decrease of 1.9% a month earlier and of an increase of 9.4% in April 2014. On MoM basis, it increased 0.4% in April 2015 as compared to no change in the month earlier and increase of 0.1% in April 2014.
5. WPI inflation on YoY basis decreased by 2.9% in April 2015 as compared to decrease of 3.7% a month earlier and an increase of 7.0% in April 2014. WPI inflation on MoM basis it increased by 0.9% in April 2015 as compared to increase of 0.01% a month earlier and 0.1% in April 2014.
6. Figures 1 and 2 show graphically the data of Table 1. Table 1.1 shows "Period Average" and "YoY" percent changes in indices of three years.

Table 1: Inflation (%) (Base 2007-08)

Period	CPI						Core Inflation				SPI**		WPI	
	General		Food		Non-food		NFNE*		Trimmed		YoY	MoM	YoY	MoM
	YoY	MoM	YoY	MoM	YoY	MoM	YoY	MoM	YoY	MoM				
Mar 14	8.5	1.0	9.3	2.1	8.0	0.2	7.6	0.3	8.1	0.3	9.0	2.1	7.7	0.3
Apr 14	9.2	1.7	9.9	2.0	8.7	1.5	8.5	1.9	9.0	0.9	9.4	0.1	7.0	0.1
May 14	8.3	-0.3	7.4	-1.2	9.0	0.4	8.7	0.5	8.3	0.3	7.7	-1.5	7.3	-0.1
Jun14	8.2	0.6	7.4	1.0	8.9	0.3	8.7	0.4	7.9	0.3	6.2	1.1	7.7	1.4
Jul 14	7.9	1.7	7.0	2.7	8.5	1.0	8.3	1.1	7.6	0.8	5.9	2.0	6.6	0.5
Aug14	7.0	0.3	5.6	0.6	8.1	0.2	7.9	0.2	7.1	0.2	5.2	0.8	3.3	-0.5
Sep14	7.7	0.4	7.2	0.0	8.0	0.6	8.1	0.7	7.1	0.2	5.4	0.2	2.7	0.2
Oct 14	5.8	0.2	5.2	-0.2	6.3	0.5	7.8	0.7	6.0	0.4	4.1	0.0 ¹	1.3	-0.3
Nov 14	4.0	-0.5	2.1	-0.4	5.4	-0.6	6.9	-0.5	5.3	0.1	-0.3	-1.1	0.0 ²	-1.0
Dec 14	4.3	-1.0	3.4	-2.1	4.9	-0.2	6.7	0.1	5.2	0.0	0.8	-1.5	-0.9	-1.9
Jan 15	3.9	0.1	3.0	-0.5	4.5	0.5	6.4	0.7	4.8	0.3	1.1	-0.9	-2.4	-1.0
Feb 15	3.2	-0.9	2.1	-1.8	4.0	-0.3	6.2	0.0	4.2	-0.2	0.2	-1.0	-3.4	-1.1
Mar 15	2.5	0.2	0.5	0.5	3.9	0.0	5.9	0.1	3.8	0.0	-1.9	0.0	-3.7	0.0 ³
Apr 15	2.1	1.3	0.0	1.4	3.7	1.3	5.4	1.4	3.1	0.6	-1.6	0.4	-2.9	0.9

*NFNE is non-food non-energy, ** SPI for quintile 1 ¹ Actual figure is -0.03, displayed in rounded figure

²Actual figure is 0.02, ³Actual figure is 0.01, displayed in rounded figure

Table 1.1 : Period Average and YoY % Changes of Indices (Base 2007-08)

Index	Averages July-April % Changes			April over April % Changes		
	2014-15	2013-14	2012-13	2014-15	2013-14	2012-13
CPI	4.81	8.69	7.75	2.11	9.18	5.80
SPI	1.86	9.78	7.86	-1.57	9.37	6.56
WPI	0.03	8.28	7.91	-2.94	6.96	6.80

Figure 1: CPI Inflation YoY, Special Indices

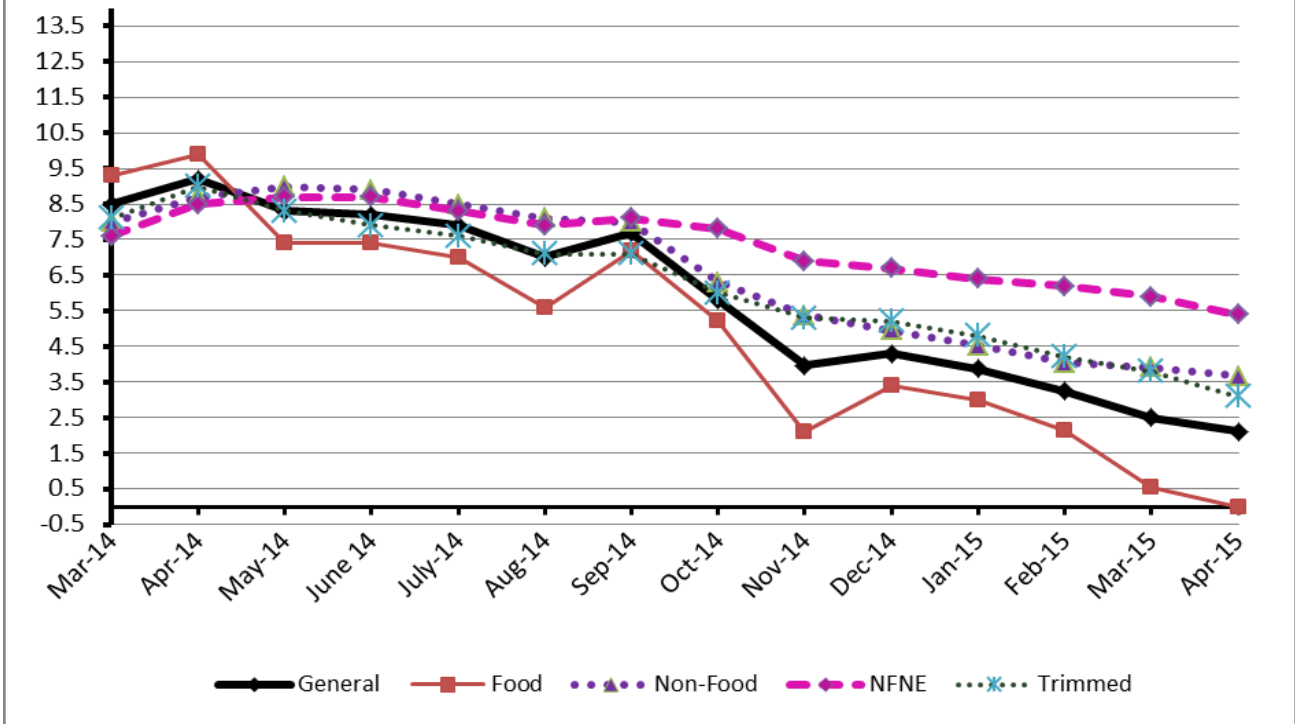
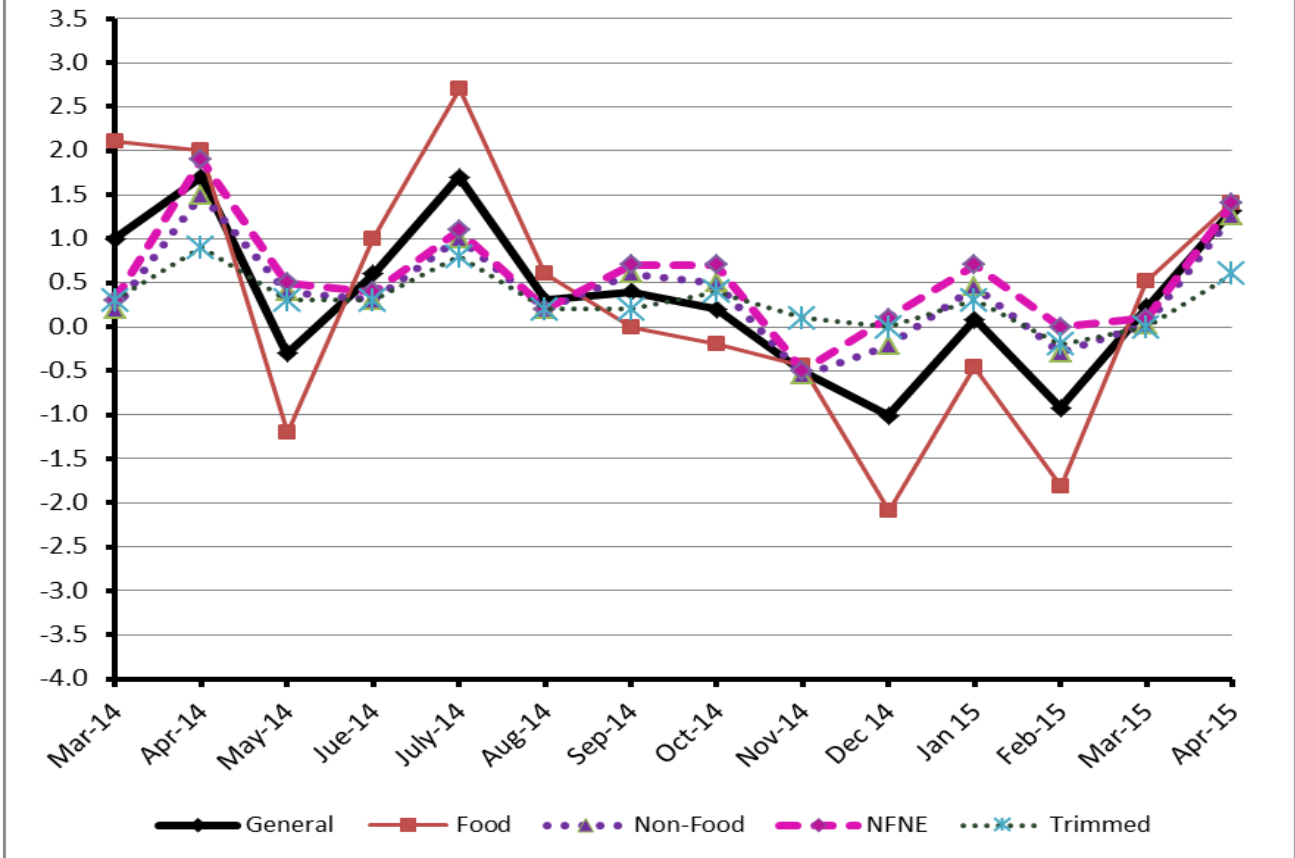


Figure 2: CPI Inflation MoM, Special Indices



II. Consumer Price Index (CPI)

The Consumer Price Index of April, 2015 has increased by 1.32 over March, 2015 and 2.11% over corresponding month of the last year, i.e. April 2014.

Table 2 : Consumer Price Index by Group of Commodities and Services (Base 2007-08)

No	Group	Group Weight (%)	Indices			% Change Apr 2015 Over		Impact (In % points) Apr 2015 Over	
			Apr 2015	Mar 2015	Apr 2014	Mar 2015	Apr 2014	Mar 2015	Apr 2014
	General	100.00	198.16	195.57	194.06	1.32	2.11	1.32	2.11
1.	Food & Non-alcoholic Bev.	34.83	214.18	210.96	216.45	1.53	-1.05	0.57	-0.41
	<i>Non-perishable Food Items</i>	29.84	214.02	213.73	213.34	0.14	0.32	0.04	0.10
	<i>Perishable Food Items</i>	4.99	215.16	194.42	235.05	10.67	-8.46	0.53	-0.51
2.	Alcoholic Bev.& Tobacco	1.41	266.65	266.63	221.91	0.01	20.16	0.00	0.33
3.	Clothing & Footwear	7.57	217.17	215.06	202.73	0.98	7.12	0.08	0.56
4.	Housing, Water, Electricity, Gas & Fuels	29.41	177.73	176.51	169.46	0.69	4.88	0.18	1.25
5.	Furnishing & Household Equipment Maintenance	4.21	211.06	209.89	200.99	0.56	5.01	0.03	0.22
6.	Health	2.19	178.21	177.26	170.58	0.54	4.47	0.01	0.09
7.	Transport	7.20	176.70	175.14	195.61	0.89	-9.67	0.06	-0.70
8.	Communication	3.22	130.29	130.27	129.80	0.02	0.38	0.00	0.01
9.	Recreation & Culture	2.02	192.74	189.80	187.95	1.55	2.55	0.03	0.05
10.	Education	3.94	209.17	192.50	184.84	8.66	13.16	0.34	0.49
11.	Restaurants & Hotels	1.23	247.73	247.22	236.98	0.21	4.54	0.00	0.07
12.	Miscellaneous	2.76	223.99	222.57	213.15	0.64	5.09	0.02	0.15

Main contributors to month-on-month and year-on-year percentage changes are given below and detail is given in Annexure A.

1. **Month-on-month** Top few commodities which varied from previous month i.e. March 2015 are given below:-

Food Items Increased: Onion (51.16%), Fresh Vegetables (14.33%), Chicken (11.07%), Fresh Fruits (9.93%), Sugar (5.85%), Tea (3.37), Pulse Mash (2.19%) and Gur (1.67%).

Decreased: Tomatoes (21.84%), Potatoes (16.02%), Eggs (7.07%), Vegetable Ghee Tin (4.03%), Cooking Oil Tin (3.27%), Wheat (2.18%), Mustard Oil (1.46%), Beans (1.43%), Fish (1.39%), Pulse Gram (1.36%), Wheat Flour (1.32%) and Rice (1.05%).

Non-food Items Increased: Education (8.66%), Sewing Needle & Dry Cell (8.01%), Text Books (3.28%), Readymade Garments (3.00%), Motor Fuel (2.74%), Tailoring (1.52%), Kerosene Oil (1.47%), Doctor (MBBS) Clinic Fee (1.46%), Personal Equipment (1.33%), Hosiery (1.26%), Medical Equipment (1.21%) and Cotton Cloths (1.02%).

Decreased: Motor Vehicle Accessories (1.59%), Motor Vehicles (0.28%) and Firewood Whole (0.15%).

2. **Year-on-Year:** Top few commodities which varied from previous year i.e. April 2014 are given below:-

Food Items Increased: Cigarettes (20.39%), Pulse Mash (19.19%), Onions (18.31%), Pulse Moong (10.09%) Honey (8.59%), Dry Fruits (7.94%), Condiments (7.75%), Jam, Tomato Ketchup & Pickles (7.56%), Sugar (7.51%).

Decreased: Potatoes (66.47%), Vegetable Ghee Tin (10.34%), Chicken (9.38%), Cooking Oil Tin (9.33%), Wheat (9.21%), Rice (8.02%) and Wheat Flour (7.08%).

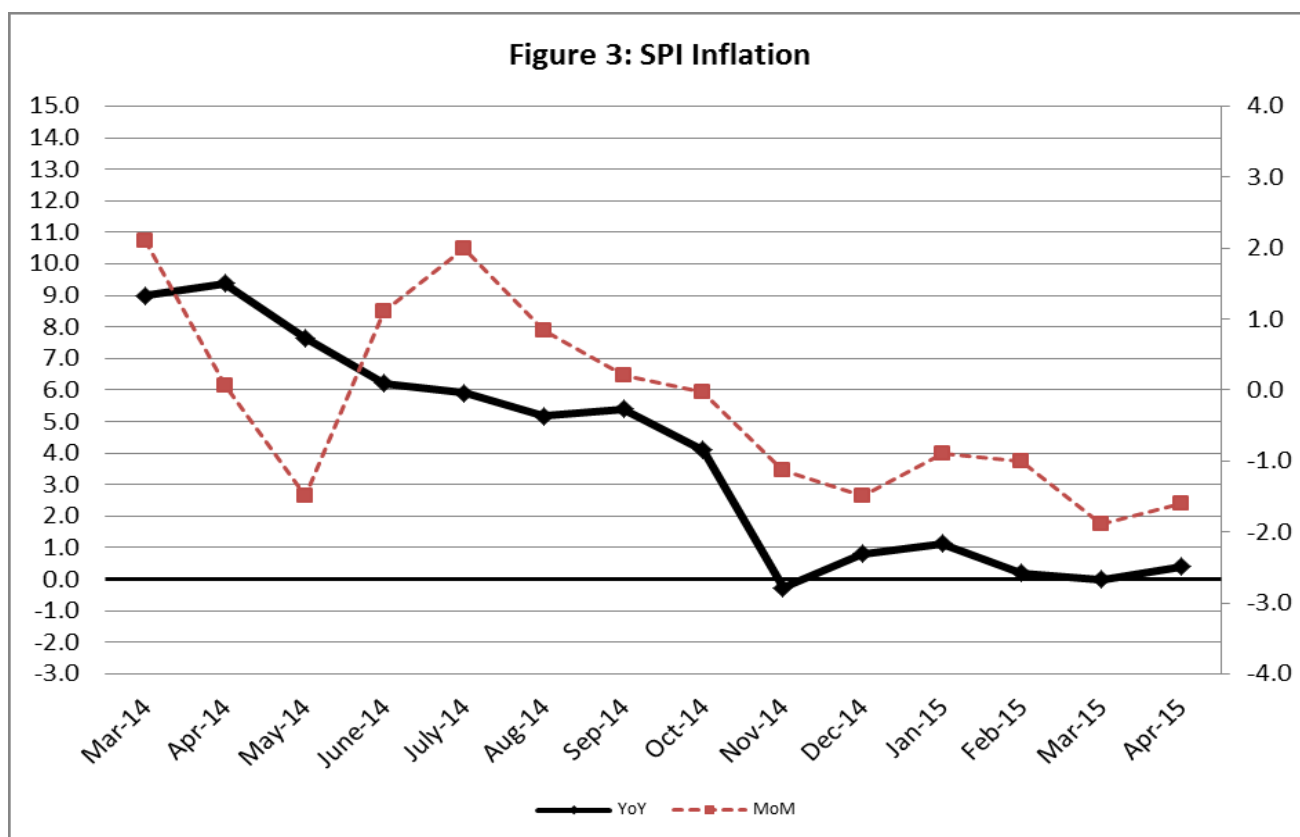
Non-food Items Increased: Motor Vehicle Tax (36.71%), Education (13.16%), Sewing Needles & Dry Cells (12.15%), Tailoring (11.45%), Woolen Readymade Garments (10.31%), Cotton Cloths (9.85%), Readymade Garments (8.95%) and Construction Wage Rates (7.10%).

Decreased: Kerosene Oil (25.69%), Motor Fuel (20.11%) and Transport Services (6.11%).

III. Sensitive Price Indicator

Quintile-wise percentage changes YoY and MoM are given below in Table 3. The series from March 2014 to April 2015 is also graphed below in Figure 3.

Table 3 : Sensitive Price Indicator (Base 2007-08)					
Quintiles	Indices			% Change April 2015 over	
	April 2015	March 2015	April 2014	March 2015	April 2014
1	200.70	199.92	203.91	0.39	-1.57
2	206.77	205.81	209.58	0.47	-1.34
3	209.95	208.83	212.44	0.54	-1.17
4	211.37	209.99	214.15	0.66	-1.30
5	208.40	206.70	212.68	0.82	-2.01
Combined	208.42	207.05	211.78	0.66	-1.59



IV. Wholesale Price Index

The Wholesale Price Index for April 2015 is increased by 0.86% over March, 2015. It is decreased by 2.94% over the corresponding month of the last year. YoY and MoM movements, from March 2014 to April 2015 are also graphed below in Figure 4.

Table 4 : Wholesale Price Index by Group of Commodities (Base 2007-08)									
No.	Group	Group Weight (%)	Indices			% Change April 2015 over		Impact (in %age points) April 2015 over	
			April 2015	March 2015	April 2014	March 2015	April 2014	March 2015	April 2014
	General	100.00	205.65	203.89	211.88	0.86	-2.94	0.86	-2.94
1.	Agriculture, Forestry & Fishery Products	25.77	219.00	212.84	221.91	2.89	-1.31	0.77	-0.35
2.	Ores & Minerals, Electricity, Gas & Water	12.04	245.66	246.08	243.12	-0.17	1.04	-0.02	0.14
3.	Food Products, Beverages & Tobacco, Textiles, Apparel & Leather Products	31.11	205.98	205.27	202.07	0.35	1.93	0.11	0.57
	i. Food Products, Bev. & Tobacco	20.07	217.28	216.35	205.82	0.43	5.57	0.09	1.08
	ii. Textiles and Apparel	10.33	184.71	184.58	192.99	0.07	-4.29	0.01	-0.40
	iii. Leather Products	0.71	196.20	193.14	228.06	1.58	-13.97	0.01	-0.11
4.	Other Transportable Goods except Metal Products, Machinery & Equipment	22.37	181.06	180.97	213.45	0.05	-15.17	0.01	-3.42
5.	Metal Products, Machinery & Equipment	8.72	172.88	173.00	170.06	-0.07	1.66	-0.01	0.12

Main contributors to month-on-month and year-on-year percentage changes are given below and detail is given in Annexure B.

1. **Month-on-month** Top few commodities which varied from previous month i.e. March, 2015 are given below:-

Increased: Vegetables (39.46%), Poultry (12.92%), Bajra (8.17%), Oil Cakes (7.46%) Sugar (7.43%) and Fresh Fruits (7.22%).

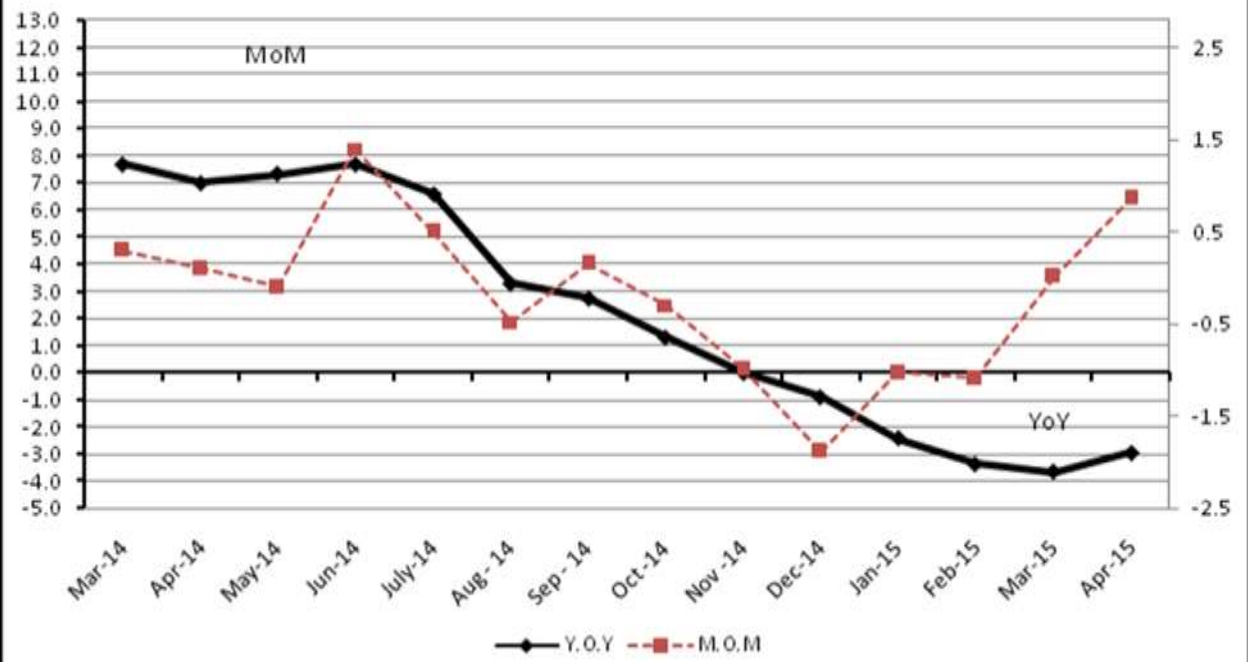
Decreased: Potatoes (23.41%), Eggs (10.13%), Other Oil Seeds (8.83%), Furnace Oil (6.11%) and Vegetable Ghee (3.30%).

2. **Year-on-year** Top few commodities which varied from previous year i.e. April, 2014 are given Below :-

Increased: Pesticides (23.64%), Tobacco Products (19.85%), Woolen Carpets (16.23%), Fish (16.20%), Processed Liquid Milk (14.78%), Quilt (14.16%) and Pipe Fitting (14.03%).

Decreased: Potatoes (71.19%), Furnace Oil (42.83%), Kerosene Oil (37.87%), Diesel (33.22%), Motor Spirit (31.43%) and Stimulant & Spices Crops (22.84%).

Figure 4: WPI Inflation



Annexure A: Consumer Price Index Numbers by Commodity Groups & Commodities (2007-08=100)

Item and Specification	Weight	Index Numbers			% Change in Apr 2015 over	
		Apr 15	Mar 15	Apr 14	Mar 2015	Apr 2014
General	100.0000	198.16	195.57	194.06	+ 1.32	+ 2.11
Food and non-alcoholic Bevera	34.8343	214.18	210.96	216.45	+ 1.53	- 1.05
01 Wheat	0.3477	201.58	206.08	222.02	- 2.18	- 9.21
02 Wheat Flour	4.1648	213.53	216.38	229.81	- 1.32	- 7.08
03 Wheat Product	0.0959	212.35	214.46	221.65	- 0.98	- 4.20
04 Besan	0.1500	175.45	174.98	171.35	+ 0.27	+ 2.39
05 Rice	1.5821	178.25	180.14	193.79	- 1.05	- 8.02
06 Cereals	0.1563	239.89	239.89	233.92	+ 0.00	+ 2.55
07 Bakery & Confectionary	1.1550	207.72	207.63	201.95	+ 0.04	+ 2.86
08 Nimco	0.4574	238.93	238.99	225.89	- 0.03	+ 5.77
09 Meat	2.4303	246.33	245.19	236.36	+ 0.46	+ 4.22
10 Chicken	1.3596	189.13	170.28	208.71	+ 11.07	- 9.38
11 Fish	0.2970	215.34	218.38	220.73	- 1.39	- 2.44
12 Milk Fresh	6.6800	250.46	249.65	236.48	+ 0.32	+ 5.91
13 Milk Products	0.6338	243.32	242.74	232.27	+ 0.24	+ 4.76
14 Milk Powder	0.1129	225.93	226.26	213.11	- 0.15	+ 6.02
15 Eggs	0.4555	175.57	188.93	179.91	- 7.07	- 2.41
16 Mustard Oil	0.0952	153.75	156.03	157.86	- 1.46	- 2.60
17 Cooking Oil	1.7538	147.12	152.09	162.26	- 3.27	- 9.33
18 Vegetable Ghee	2.0714	143.28	149.30	159.80	- 4.03	- 10.34
19 Dry Fruits	0.2543	250.60	251.60	232.17	- 0.40	+ 7.94
20 Fresh Fruits	1.8649	232.24	211.26	234.38	+ 9.93	- 0.91
21 Pulse Masoor	0.2712	188.36	188.43	178.68	- 0.04	+ 5.42
22 Pulse Moong	0.2336	311.10	311.95	282.59	- 0.27	+ 10.09
23 Pulse Mash (Washed)	0.2098	231.57	226.61	194.28	+ 2.19	+ 19.19
24 Pulse Gram	0.2361	173.18	175.56	169.47	- 1.36	+ 2.19
25 Gram Whole	0.1616	178.42	179.08	178.38	- 0.37	+ 0.02
26 Beans	0.0269	232.45	235.83	247.85	- 1.43	- 6.21
27 Potatoes	0.4889	128.90	153.49	384.45	- 16.02	- <u>66.47</u>
28 Onion	0.5530	262.15	173.43	221.58	+ <u>51.16</u>	+ 18.31
29 Tomatoes	0.4609	145.03	185.55	144.04	- 21.84	+ 0.69
30 Fresh Vegetables	1.6232	225.41	197.16	221.23	+ 14.33	+ 1.89
31 Sugar	1.0445	205.53	194.18	191.18	+ 5.85	+ 7.51
32 Gur	0.0220	256.44	252.22	244.04	+ 1.67	+ 5.08
33 Honey	0.0446	303.39	303.39	279.40	+ 0.00	+ 8.59
34 Sweet Meat	0.2483	234.89	234.31	225.66	+ 0.25	+ 4.09
35 Beverages	1.1990	207.94	206.84	196.47	+ 0.53	+ 5.84
36 Jam, Tomato Ketchup & Pickles	0.2454	207.59	207.58	193.00	+ 0.00	+ 7.56
37 Condiments	0.2656	257.07	256.81	238.59	+ 0.10	+ 7.75
38 Spices	0.5441	234.74	235.06	219.82	- 0.14	+ 6.79
39 Tea	0.8377	226.62	219.24	225.89	+ 3.37	+ 0.32
Alcoholic Beverages, Tobacco	1.4135	266.65	266.63	221.91	+ 0.01	+ 20.16
40 Cigarettes	1.3906	267.63	267.63	222.30	+ 0.00	+ 20.39
41 Betel Leaves & Nuts	0.0229	207.03	206.03	197.90	+ 0.49	+ 4.61
Clothing and footwear	7.5708	217.17	215.06	202.73	+ 0.98	+ 7.12
42 Cotton Cloth	1.7286	211.44	209.30	192.48	+ 1.02	+ 9.85
43 Woolen Cloth	0.8759	234.13	233.69	224.40	+ 0.19	+ 4.34
44 Readymade Garments	0.9739	220.40	213.98	202.29	+ 3.00	+ 8.95
45 Woolen Readymade Garments	0.3964	240.86	240.87	218.34	+ 0.00	+ 10.31
46 Hosiery	0.5094	229.28	226.43	214.77	+ 1.26	+ 6.76
47 Dopatta	0.4412	232.30	231.21	221.79	+ 0.47	+ 4.74
48 Cleaning and Laundry	0.2110	237.64	237.64	222.87	+ 0.00	+ 6.63

Annexure A: Consumer Price Index Numbers by Commodity Groups & Commodities (2007-08=100)

Item and Specification	Weight	Index Numbers			% Change in Apr 2015 over	
		Apr 15	Mar 15	Apr 14	Mar 2015	Apr 2014
49 Tailoring	0.8840	270.28	266.24	242.51	+ 1.52	+ 11.45
50 Footwear	1.5504	164.53	164.45	163.41	+ 0.05	+ 0.69
Housing, water, Elec., Gas an	29.4149	177.73	176.51	169.46	+ 0.69	+ 4.88
51 House Rent	21.8149	166.88	165.29	157.05	+ 0.96	+ 6.26
52 Construction Input Items	0.5623	238.88	237.12	230.86	+ 0.74	+ 3.47
53 Construction Wage Rates	0.3331	210.14	208.81	196.20	+ 0.64	+ 7.10
54 Water Supply	0.4971	149.92	149.92	149.92	+ 0.00	+ 0.00
55 Electricity	4.3985	231.52	231.52	227.44	+ 0.00	+ 1.79
56 Gas	1.5756	143.81	143.81	143.81	+ 0.00	+ 0.00
57 Kerosene Oil	0.0057	208.84	205.81	281.05	+ 1.47	- 25.69
58 Firewood Whole	0.2277	274.81	275.22	265.60	- 0.15	+ 3.47
Furnishing and household equi	4.2082	211.06	209.89	200.99	+ 0.56	+ 5.01
59 Furniture	0.3315	202.69	202.15	192.83	+ 0.27	+ 5.11
60 Household Textiles	0.6489	207.73	207.67	197.88	+ 0.03	+ 4.98
61 Household Equipment	0.5936	173.79	172.55	169.22	+ 0.72	+ 2.70
62 Utensils	0.3212	212.94	212.69	202.35	+ 0.12	+ 5.23
63 Plastic Products	0.2547	201.48	201.40	194.12	+ 0.04	+ 3.79
64 Washing Soaps & Detergents	0.7893	225.12	224.64	218.08	+ 0.21	+ 3.23
65 Sewing Needle & Dr Cell	0.1496	198.97	184.21	177.41	+ 8.01	+ 12.15
66 Household Servant	1.0432	228.35	227.11	213.99	+ 0.55	+ 6.71
67 Marriage Hall Charges	0.0762	231.83	231.83	219.18	+ 0.00	+ 5.77
Health	2.1868	178.21	177.26	170.58	+ 0.54	+ 4.47
68 Drugs & Medicines	1.2667	148.33	148.33	144.47	+ 0.00	+ 2.67
69 Medical Equipments	0.0080	225.36	222.66	215.08	+ 1.21	+ 4.78
70 Doctor (MBBS) Clinic Fee	0.5904	241.97	238.49	227.19	+ 1.46	+ 6.51
71 Medical Tests	0.3217	177.69	177.69	168.40	+ 0.00	+ 5.52
Transport	7.2023	176.70	175.14	195.61	+ 0.89	- 9.67
72 Motor Vehicles	0.6630	163.41	163.87	160.07	- 0.28	+ 2.09
73 Motor Vehicle Accessories	0.2439	226.51	230.17	225.59	- 1.59	+ 0.41
74 Motor Fuel	3.0269	150.53	146.52	188.42	+ 2.74	- 20.11
75 Mechanical Service	0.4552	212.78	212.42	202.66	+ 0.17	+ 4.99
76 Motor Vehicle Tax	0.1099	210.18	210.18	153.74	+ 0.00	+ 36.71
77 Transport Services	2.7034	197.35	197.28	210.19	+ 0.04	- 6.11
Communication	3.2198	130.29	130.27	129.80	+ 0.02	+ 0.38
78 Postal Services	0.0662	227.44	227.44	215.89	+ 0.00	+ 5.35
79 Communication & Apparatus	3.1536	128.25	128.23	127.99	+ 0.02	+ 0.20
Recreation and culture	2.0227	192.74	189.80	187.95	+ 1.55	+ 2.55
80 Recreation & Culture	0.8634	128.25	128.25	126.96	+ 0.00	+ 1.02
81 Text Books	0.5706	290.10	280.89	278.49	+ 3.28	+ 4.17
82 Newspapers	0.1934	175.42	175.42	175.42	+ 0.00	+ 0.00
83 Stationery	0.3953	201.55	199.80	196.59	+ 0.88	+ 2.52
Education	3.9431	209.17	192.50	184.84	+ 8.66	+ 13.16
84 Education	3.9431	209.17	192.50	184.84	+ 8.66	+ 13.16
Restaurants and hotels	1.2286	247.73	247.22	236.98	+ 0.21	+ 4.54
85 Readymade Food	1.2286	247.73	247.22	236.98	+ 0.21	+ 4.54
Misc. goods and services	2.7550	223.99	222.57	213.15	+ 0.64	+ 5.09
86 Personal Care	1.4935	207.29	206.71	197.28	+ 0.28	+ 5.07
87 Cosmetics	0.3853	190.49	190.30	181.15	+ 0.10	+ 5.16
88 Blades	0.0322	185.88	185.88	182.78	+ 0.00	+ 1.70
89 Personal Equipments	0.8440	270.30	266.75	257.00	+ 1.33	+ 5.18

Annexure B: Wholesale Price Indices by Major Groups & Commodities (2007-08=100)

Item and Specification	Weight	Index Numbers			% Change in Apr 2015 over			
		Apr 15	Mar 15	Apr 14	Mar 2015	Apr 2014		
General	100.0000	205.65	203.89	211.88	+	0.86	-	2.94
Agriculture Forestry & Fisher	25.7674	219.00	212.84	221.91	+	2.89	-	1.31
001 Wheat	0.6297	206.14	210.62	232.52	-	2.13	-	11.35
002 Maize	0.6764	188.60	187.54	188.84	+	0.57	-	0.13
003 Rice	2.4413	163.71	162.53	179.08	+	0.73	-	8.58
004 Sorghum / Jowar	0.0214	292.62	289.73	304.45	+	1.00	-	3.89
005 Millet / Bajra	0.0374	172.47	159.44	173.13	+	8.17	-	0.38
006 Vegetables	1.2441	262.99	188.58	236.30	+	39.46	+	11.29
007 Fresh Fruits	1.5144	242.95	226.58	258.23	+	7.22	-	5.92
008 Dry Fruits	0.2478	237.25	232.48	208.07	+	2.05	+	14.02
009 Cotton Seeds	1.1511	215.48	203.39	209.33	+	5.94	+	2.94
010 Other Oil Seeds	0.0722	157.14	172.36	172.46	-	8.83	-	8.88
011 Edible Roots / Potatoes	0.2540	115.50	150.80	400.84	-	23.41	-	71.19
012 Stimulant & Spice Crops	0.1634	286.93	281.74	371.86	+	1.84	-	22.84
013 Pulses	0.4901	209.56	209.71	190.93	-	0.07	+	9.76
014 Sugar Crops	1.0725	286.29	286.29	267.92	+	0.00	+	6.86
015 Fibre Crops	5.3169	172.53	165.63	209.71	+	4.17	-	17.73
016 Unmanufactured Tobacco	0.0742	217.50	217.50	195.81	+	0.00	+	11.08
017 Poultry	0.5633	189.61	167.92	219.86	+	12.92	-	13.76
018 Raw Milk from Bovine Animals	7.0279	251.69	251.69	230.05	+	0.00	+	9.41
019 Eggs	0.5034	170.54	189.76	173.18	-	10.13	-	1.52
020 Raw Animal Materials / Wool	0.0351	177.10	177.10	157.45	+	0.00	+	12.48
021 Hides & Fur Skins, Raw	0.4834	159.72	159.92	145.57	-	0.13	+	9.72
022 Fuel Wood in Logs	0.0179	259.53	259.53	242.38	+	0.00	+	7.08
023 Fish Live Fresh or Chilled	1.7295	283.89	286.70	244.31	-	0.98	+	16.20
Ores/Minerals, Elec., Gas & W	12.0389	245.66	246.08	243.12	-	0.17	+	1.04
024 Coal not Agglomerated	0.7508	223.53	223.53	223.53	+	0.00	+	0.00
025 Natural Gas Liquified	5.7385	200.74	201.62	203.39	-	0.44	-	1.30
026 Salt & Pure Sodium Chloride	0.0584	248.84	247.16	231.42	+	0.68	+	7.53
027 Electrical Energy	5.4912	295.61	295.61	287.44	+	0.00	+	2.84
Food, Beverages, Tobacco, Textil	31.1122	205.98	205.27	202.07	+	0.35	+	1.93
Food Products, Beverages &	20.0718	217.28	216.35	205.82	+	0.43	+	5.57
028 Meat of Animals	3.4559	260.64	260.18	241.31	+	0.18	+	8.01
029 Vegetables & Fruit Juice	0.0058	199.28	198.31	191.62	+	0.49	+	4.00
030 Dried Fruits & Nuts	0.1733	228.25	229.85	218.45	-	0.70	+	4.49
031 Fruit Juices	0.3880	174.06	173.34	166.33	+	0.42	+	4.65
032 Vegetable Oils Refined	1.9242	155.23	158.10	164.58	-	1.82	-	5.68
033 Vegetable Ghee	1.5632	124.33	128.57	142.54	-	3.30	-	12.78
034 Oil Cakes	0.9611	200.07	186.18	207.80	+	7.46	-	3.72
035 Processed Liquid Milk	4.4437	251.52	253.81	219.13	-	0.90	+	14.78
036 Milk & Cream in Solid Form	0.0316	221.70	221.70	207.76	+	0.00	+	6.71
037 Ice Cream	0.0047	219.91	219.91	209.79	+	0.00	+	4.82
038 Dairy Products N.E.C	0.0117	243.80	239.38	228.17	+	1.85	+	6.85
039 Wheat Flour	2.3034	194.97	198.06	211.80	-	1.56	-	7.95
040 Other Cereal Flour	0.0604	146.98	144.94	140.44	+	1.41	+	4.66
041 Sugar Refined	1.7975	220.03	204.82	201.00	+	7.43	+	9.47
042 Chocolate	0.0139	99.19	99.19	99.19	+	0.00	+	0.00
043 Sugar Confectionary	0.0738	102.28	102.28	102.28	+	0.00	+	0.00
044 Coffee & Tea	0.7303	203.67	195.98	198.66	+	3.92	+	2.52
045 Spices	0.1449	189.90	189.66	191.57	+	0.13	-	0.87
046 Other Food Products	0.0336	294.23	294.23	308.98	+	0.00	-	4.77
047 Mineral Water	0.0207	187.86	187.86	184.22	+	0.00	+	1.98
048 Beverages	0.6303	171.62	171.62	161.66	+	0.00	+	6.16
049 Tobacco Products	1.2998	290.52	290.52	242.41	+	0.00	+	19.85
Textiles & Apparels	10.3289	184.71	184.58	192.99	+	0.07	-	4.29
050 Cotton Yarn	5.2491	170.12	170.43	201.07	-	0.18	-	15.39
051 Nylon Yarn	0.1719	150.22	150.22	167.97	+	0.00	-	10.57
052 Blended Yarn	0.1689	182.72	182.56	193.66	+	0.09	-	5.65
053 Woven Fabrics	0.0128	258.39	258.39	226.82	+	0.00	+	13.92
054 Cotton Fabrics	0.6343	201.34	201.34	193.10	+	0.00	+	4.27

Annexure B: Wholesale Price Indices by Major Groups & Commodities

(2007-08=100)

Item and Specification	Weight	Index Numbers			% Change in Apr 2015 over	
		Apr 15	Mar 15	Apr 14	Mar 2015	Apr 2014
055 Other Fabrics	1.1016	212.61	212.61	192.36	+ 0.00	+ 10.53
056 Silk & Reyon Fabrics	0.7350	181.33	179.89	165.36	+ 0.80	+ 9.66
057 Towels	0.1235	265.62	265.62	242.19	+ 0.00	+ 9.67
058 Blankets	0.0029	235.86	235.86	219.66	+ 0.00	+ 7.38
059 Bed Sheets	0.0913	256.29	255.40	242.12	+ 0.35	+ 5.85
060 Quilts	0.0019	196.84	196.84	172.42	+ 0.00	+ 14.16
061 Woolen Carpets	0.0383	132.14	132.14	113.69	+ 0.00	+ 16.23
062 Synthetic Carpets	0.0566	126.27	126.27	116.10	+ 0.00	+ 8.76
063 Hosiery Products	0.8832	218.08	216.06	196.90	+ 0.93	+ 10.76
064 Readymade Garments	1.0576	186.77	186.77	169.94	+ 0.00	+ 9.90
Leather Products	0.7115	196.20	193.14	228.06	+ 1.58	- 13.97
065 Leather Without Hair	0.2973	215.06	207.72	203.40	+ 3.53	+ 5.73
066 Other Leather N.E.C	0.2567	212.39	212.39	314.19	+ 0.00	- 32.40
067 Footwears	0.1575	134.22	134.22	134.22	+ 0.00	+ 0.00
Other Transportable Goods	22.3659	181.06	180.97	213.45	+ 0.05	- 15.17
068 Timber	0.0165	202.05	202.05	178.07	+ 0.00	+ 13.47
069 Printing Paper	0.4279	162.72	162.79	177.81	- 0.04	- 8.49
070 Hard Board	0.1579	197.92	197.92	229.17	+ 0.00	- 13.64
071 Coke	0.2797	163.45	163.45	163.45	+ 0.00	+ 0.00
072 Motor Spirit	1.5336	125.47	118.71	182.98	+ 5.69	- 31.43
073 Diesel Oil	5.2664	178.33	175.03	267.04	+ 1.89	- 33.22
074 Kerosine Oil	0.2151	178.93	178.93	288.01	+ 0.00	- 37.87
075 Furnace Oil	3.2664	94.70	100.86	165.65	- 6.11	- 42.83
076 Mobil Oil	0.7114	200.74	200.74	197.73	+ 0.00	+ 1.52
077 Chemicals	1.7720	195.03	196.79	176.47	- 0.89	+ 10.52
078 Dyeing Material	0.1539	146.55	146.55	143.77	+ 0.00	+ 1.93
079 Fertilizers	2.8657	272.54	273.84	264.50	- 0.47	+ 3.04
080 Pesticides	0.2763	293.74	290.39	237.58	+ 1.15	+ 23.64
081 Insecticides	0.1276	143.34	142.24	177.92	+ 0.77	- 19.44
082 Paints & Varnishes	0.1916	291.69	291.17	268.31	+ 0.18	+ 8.71
083 Medicines	1.1428	145.19	145.19	140.59	+ 0.00	+ 3.27
084 Soaps & Detergents	0.8168	178.14	178.14	181.82	+ 0.00	- 2.02
085 Auto Tyres	0.2703	191.36	192.43	185.73	- 0.56	+ 3.03
086 Plastic Products	0.4550	222.47	222.47	202.70	+ 0.00	+ 9.75
087 Glass sheets	0.2089	228.76	228.76	209.86	+ 0.00	+ 9.01
088 Other Glass Articles	0.1635	243.63	243.63	214.09	+ 0.00	+ 13.80
089 Ceramics & Sanitary Fixture	0.0244	219.25	218.62	199.50	+ 0.29	+ 9.90
090 Bricks, Blocks & Tiles	0.1566	209.76	208.60	197.05	+ 0.56	+ 6.45
091 Cement	1.8145	206.86	206.83	207.45	+ 0.01	- 0.28
092 Bed Foam	0.0006	156.67	156.67	149.67	+ 0.00	+ 4.68
093 Matches	0.0505	143.20	143.20	143.20	+ 0.00	+ 0.00
Metal Product, Machinery & Eq	8.7156	172.88	173.00	170.06	- 0.07	+ 1.66
094 Pig Iron	0.0593	128.97	128.97	128.97	+ 0.00	+ 0.00
095 Steel Bar & Sheets	1.4022	140.03	140.43	138.13	- 0.28	+ 1.38
096 Pipe Fittings	0.0780	191.94	191.94	168.33	+ 0.00	+ 14.03
097 Steel Products	0.3879	173.88	173.80	170.24	+ 0.05	+ 2.14
098 Engines & Motors	0.0046	109.07	109.07	109.07	+ 0.00	+ 0.00
099 Vacuum Pumps	0.0155	115.39	115.39	115.39	+ 0.00	+ 0.00
100 Air Conditioners	0.0049	197.69	196.18	181.12	+ 0.77	+ 9.15
101 Cultivators	0.0551	219.76	219.76	226.90	+ 0.00	- 3.15
102 Chuff Cutter	0.1293	149.20	149.20	149.20	+ 0.00	+ 0.00
103 Tractors	0.0028	214.54	214.54	214.54	+ 0.00	+ 0.00
104 Lathe Machines	0.0525	208.81	208.81	208.81	+ 0.00	+ 0.00
105 Concrete Mixture	0.0107	138.83	138.83	138.83	+ 0.00	+ 0.00
106 Fridge,WashM,SewM,Fans,Iron	1.1645	198.20	198.16	195.02	+ 0.02	+ 1.63
107 Electric Wires	0.0912	190.87	190.87	178.73	+ 0.00	+ 6.79
108 Lighting Equipments	1.4431	168.19	168.19	164.75	+ 0.00	+ 2.09
109 Radio & Television	0.1843	126.49	126.49	126.49	+ 0.00	+ 0.00
110 Motor Vehicles	0.0244	183.03	183.03	182.75	+ 0.00	+ 0.15
111 Motorcycles	0.2570	125.89	128.20	126.48	- 1.80	- 0.47
112 Bicycles	3.3483	185.63	185.63	182.84	+ 0.00	+ 1.53