



Monthly Review on Price Indices



December, 2014
(Base 2007-08)

Government of Pakistan
Statistics Division
Pakistan Bureau of Statistics
Islamabad

Inflation in Brief

1. CPI inflation, General, increased by 4.3% on year-on-year basis in December 2014 as compared to 4.0% in the previous month and by 9.2% in December 2013. On month-on-month basis, it decreased by 1.0% in December 2014 as compared to decrease of 0.5% in the previous month and decrease of 1.3% in December 2013.
2. Core inflation measured by non-food non-energy CPI (Core NFNE) increased by 6.7% on (YoY) basis in December 2014 as compared to 6.9% in the previous month and by 8.2% in December 2013. On (MoM) basis, it increased by 0.1% in December 2014 as compared to decrease of 0.5% in the previous month and increased by 0.2% in December 2013.
3. Core inflation, measured by 20% weighted trimmed mean CPI (Core Trimmed) increased by 5.2% on (YoY) basis in December 2014 as compared to 5.3% in the previous month and by 8.7% in December 2013. On (MoM) basis, it remained unchanged in December 2014 as compared to increase of 0.1% in the previous month and 0.4% in December 2013.
4. SPI inflation on YoY basis increased by 0.8% in December 2014 as compared to decrease of 0.3% a month earlier and increase of 11.1% in December 2013. On MoM basis, it is decreased by 1.5% in December 2014 as compared to decrease of 1.1% a month earlier and 2.5% in December 2013.
5. WPI inflation on YoY basis decreased by 0.9% in December 2014 as compared to increase of 0.02% a month earlier and 8.9% in December 2013. WPI inflation on MoM basis decreased by 1.9% in December 2014 as compared to decrease of 1.0% a month earlier and 1.0% in December 2013.
6. Figures 1 and 2 show graphically the data of Table 1. Table 1.1 shows "Period Average" and "YoY" percent changes in indices of three years.

Table 1: Inflation (%) (Base 2007-08)

Period	CPI						Core Inflation				SPI**		WPI	
	General		Food		Non-food		NFNE*		Trimmed		YoY	MoM	YoY	MoM
	YoY	MoM	YoY	MoM	YoY	MoM	YoY	MoM	YoY	MoM				
Nov 13	10.9	1.3	13.0	2.6	9.4	0.3	8.5	0.3	9.2	0.4	14.1	3.2	10.4	0.2
Dec 13	9.2	-1.3	9.3	-3.3	9.1	0.2	8.2	0.2	8.7	0.4	11.1	-2.5	8.9	-1.0
Jan 14	7.9	0.5	7.2	0.0 ¹	8.4	0.9	8.0	1.0	8.2	0.6	7.7	-1.2	8.1	0.5
Feb 14	7.9	-0.3	7.6	-1.0	8.2	0.2	7.8	0.2	8.1	0.2	7.5	-0.1	7.6	-0.1
Mar 14	8.5	1.0	9.3	2.1	8.0	0.2	7.6	0.3	8.1	0.3	9.0	2.1	7.7	0.3
Apr 14	9.2	1.7	9.9	2.0	8.7	1.5	8.5	1.9	9.0	0.9	9.4	0.1	7.0	0.1
May 14	8.3	-0.3	7.4	-1.2	9.0	0.4	8.7	0.5	8.3	0.3	7.7	-1.5	7.3	-0.1
Jun 14	8.2	0.6	7.4	1.0	8.9	0.3	8.7	0.4	7.9	0.3	6.2	1.1	7.7	1.4
Jul 14	7.9	1.7	7.0	2.7	8.5	1.0	8.3	1.1	7.6	0.8	5.9	2.0	6.6	0.5
Aug 14	7.0	0.3	5.6	0.6	8.1	0.2	7.9	0.2	7.1	0.2	5.2	0.8	3.3	-0.5
Sep 14	7.7	0.4	7.2	0.0	8.0	0.6	8.1	0.7	7.1	0.2	5.4	0.2	2.7	0.2
Oct 14	5.8	0.2	5.2	-0.2	6.3	0.5	7.8	0.7	6.0	0.4	4.1	0.0 ²	1.3	-0.3
Nov 14	4.0	-0.5	2.1	-0.4	5.4	-0.6	6.9	-0.5	5.3	0.1	-0.3	-1.1	0.0 ³	-1.0
Dec 14	4.3	-1.0	3.4	-2.1	4.9	-0.2	6.7	0.1	5.2	0.0	0.8	-1.5	-0.9	-1.9

*NFNE is non-food non-energy,

** SPI for quintile 1

¹ Actual figure is -0.04, displayed in rounded figure

² Actual figure is -0.03, ³ Actual figure is 0.02 displayed in rounded figure

Table 1.1 : Period Average and YoY % Changes of Indices (Base 2007-08)

Index	Averages July-December % Changes			December over December % Changes		
	2014-15	2013-14	2012-13	2014-15	2013-14	2012-13
CPI	6.08	8.89	8.32	4.30	9.18	7.93
SPI	3.47	10.74	7.46	0.77	11.12	8.22
WPI	2.13	8.76	7.94	-0.89	8.88	9.64

Figure 1: CPI Inflation YoY, Special Indices

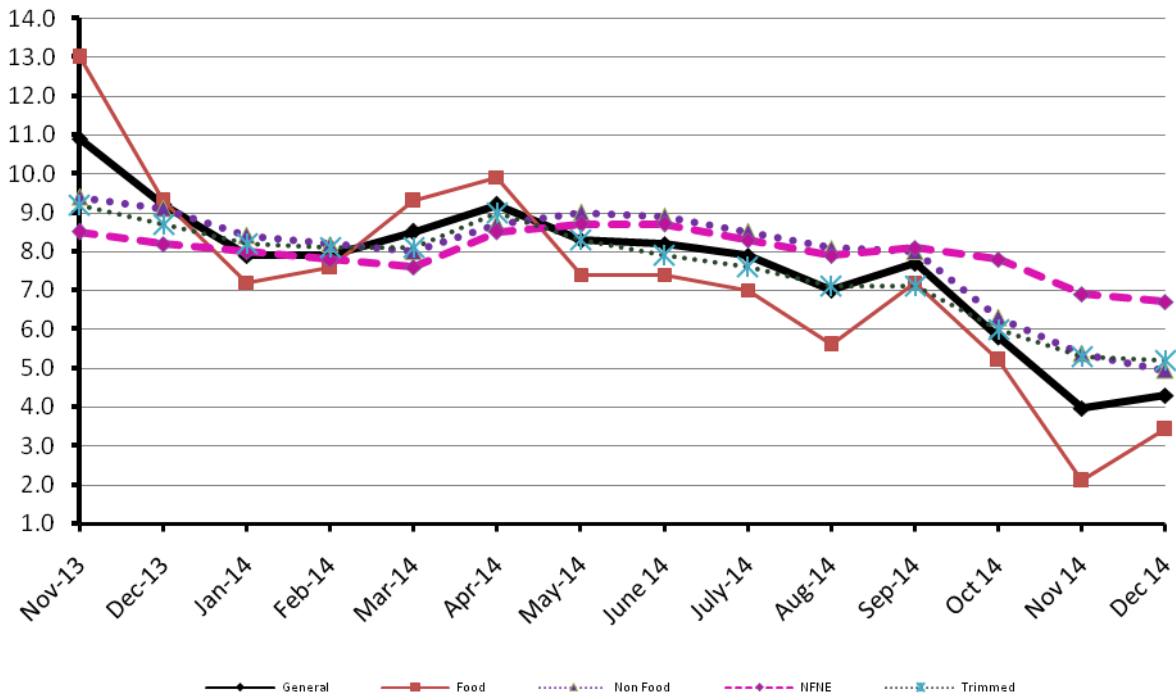
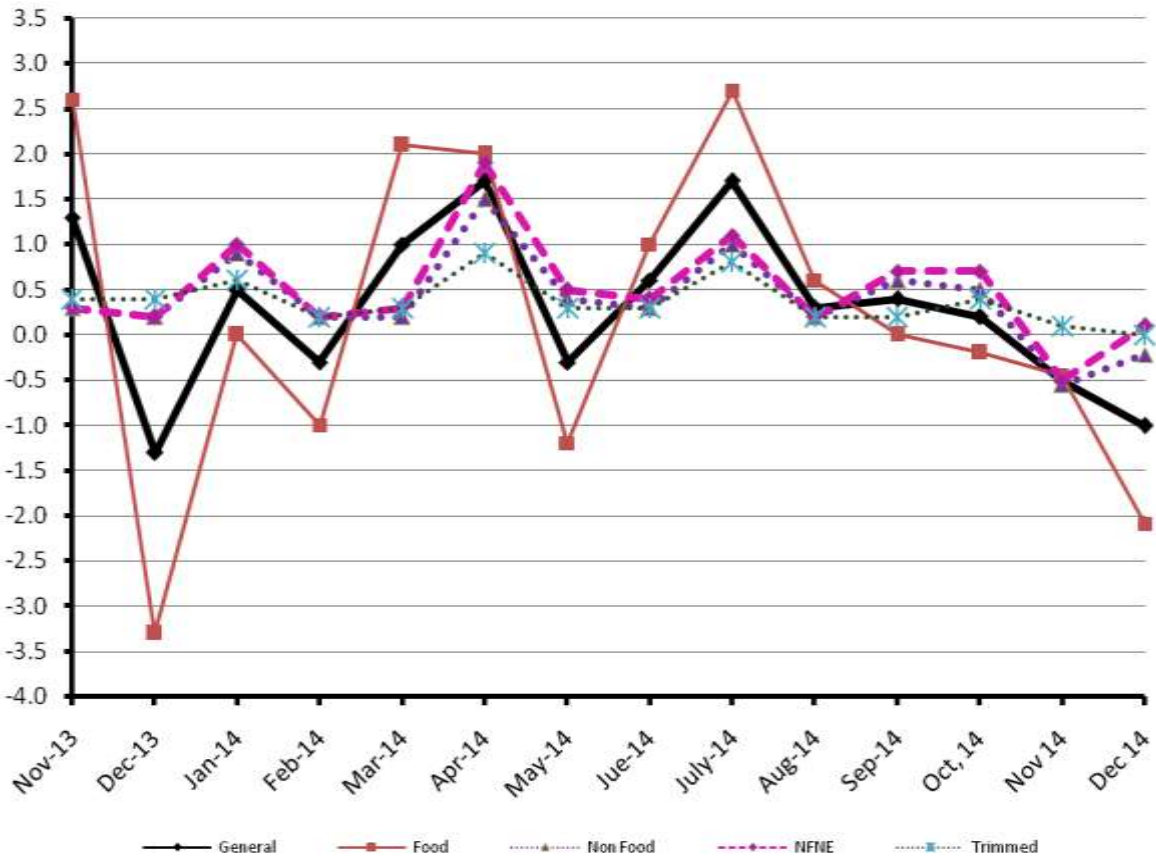


Figure 2: CPI Inflation MoM, Special Indices



II. Consumer Price Index (CPI)

The Consumer Price Index of December, 2014 has decreased by 1.01% over November, 2014 and increased by 4.30% over corresponding month of the last year, i.e. December 2013.

Table 2 : Consumer Price Index by Group of Commodities and Services (Base 2007-08)

No	Group	Group Weight (%)	Indices			% Change Dec 2014 Over		Impact (In % points) Dec 2014 Over	
			Dec 2014	Nov 2014	Dec 2013	Nov 2014	Dec 2013	Nov 2014	Dec 2013
	General	100.00	196.79	198.79	188.68	-1.01	4.30	-1.01	4.30
1.	Food & Non-alcoholic Bev.	34.83	215.18	220.25	209.87	-2.30	2.53	-0.89	0.98
	<i>Non-perishable Food Items</i>	29.84	217.02	216.69	211.33	0.15	2.69	0.05	0.90
	<i>Perishable Food Items</i>	4.99	204.22	241.56	201.17	-15.46	1.52	-0.94	0.08
2.	Alcoholic Bev.& Tobacco	1.41	266.63	266.65	220.96	-0.01	20.67	0.00	0.34
3.	Clothing & Footwear	7.57	213.88	213.01	196.57	0.41	8.81	0.03	0.69
4.	Housing, Water, Electricity, Gas & Fuels	29.41	174.04	174.01	164.44	0.02	5.84	0.00	1.50
5.	Furnishing & Household Equipment Maintenance	4.21	208.80	208.26	195.84	0.26	6.62	0.01	0.29
6.	Health	2.19	176.31	175.37	166.84	0.54	5.68	0.01	0.11
7.	Transport	7.20	185.18	190.59	197.03	-2.84	-6.02	-0.23	-0.45
8.	Communication	3.22	130.13	129.99	129.79	0.11	0.26	0.00	0.01
9.	Recreation & Culture	2.02	189.60	189.55	183.14	0.03	3.53	0.00	0.07
10.	Education	3.94	192.41	192.41	168.34	0.00	14.30	0.00	0.50
11.	Restaurants & Hotels	1.23	244.59	242.78	228.16	0.75	7.20	0.01	0.11
12.	Miscellaneous	2.76	220.73	220.35	210.34	0.17	4.94	0.01	0.15

Main contributors to month-on-month and year-on-year percentage changes are given below and detail is given in Annexure A.

1. **Month-on-month** Top few commodities which varied from previous month i.e. November 2014 are given below:-

Food Items Increased: Tomatoes (12.47%), Chicken (11.76%), Pulse Moong (3.82%), Fish (2.16%), Pulse Masoor (1.50%) and Dry Fruits (1.07%).

Decreased: Potatoes (38.59%), Onions (27.71%), Fresh Vegetables (14.64%), Fresh Fruits (5.99%), Sugar (4.51%), Gur (3.80%), Rice (3.11%), Eggs (2.18%), Wheat (1.84%), and Vegetable Ghee (1.11%).

Non-food Items Increased: Woolen Readymade Garments (2.25%) and Postal Services (2.14%).

Decreased: Motor Fuel (6.63%) and Kerosene Oil (6.53%).

2. **Year-on-Year:** Top few commodities which varied from previous year i.e. December 2013 are given below:-

Food Items Increased: Pulse Moong (21.54%), Cigarettes (20.86%), Pulse Mash (18.94%), Fresh Fruits (17.88%), Fresh Vegetables (17.67%), Milk Powder (13.39%) and Pulse Masoor (12.69%).

Decreased: Onions (50.50%), Tomatoes (16.74%) and Tea (12.99%).

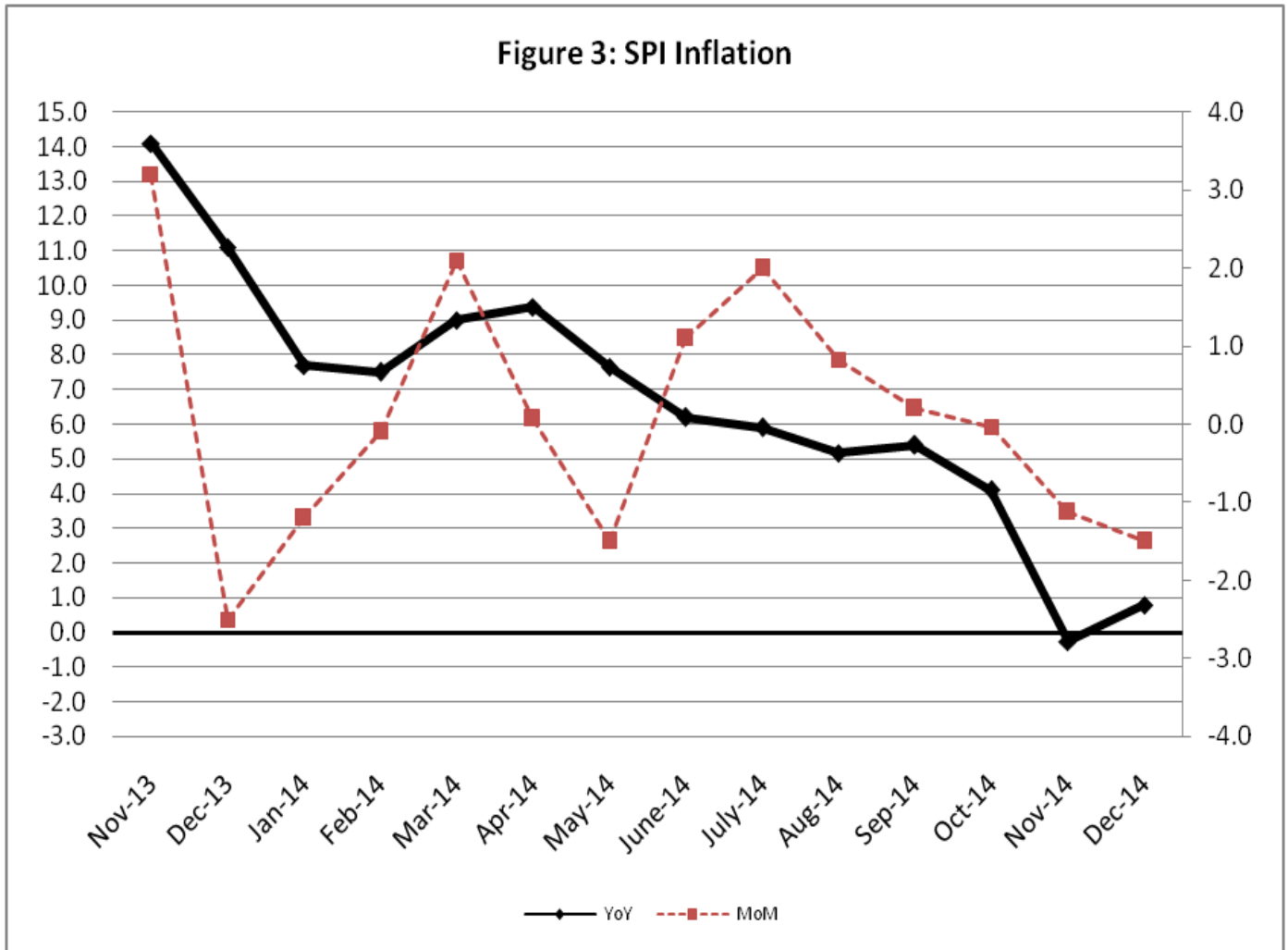
Non-food Items Increased: Motor Vehicle Tax (36.71%), Woolen Readymade Garments (15.05%), Education (14.30%) and Cotton Cloths (13.57%).

Decreased: Kerosene Oil (18.01%) and Motor Fuel (15.50%).

III. Sensitive Price Indicator

Quintile-wise percentage changes YoY and MoM are given below in Table 3. The series from November 2013 to December 2014 is also graphed below in Figure 3.

Table 3 : Sensitive Price Indicator (Base 2007-08)					
Quintiles	Indices			% Change December 2014 over	
	December 2014	November 2014	December 2013	November 2014	December 2013
1	203.70	206.84	202.14	-1.52	0.77
2	209.85	212.73	207.70	-1.35	1.04
3	213.06	215.65	211.31	-1.20	0.83
4	214.64	217.17	213.30	-1.16	0.63
5	212.03	214.69	212.02	-1.24	0.00
Combined	211.76	214.45	210.78	-1.25	0.46



IV. Wholesale Price Index

The Wholesale Price Index for December 2014 is decreased by 1.89% over November 2014. It is decreased by 0.89% over the corresponding month of the last year. YoY and MoM movements, from November 2013 to December 2014 are also graphed below in Figure 4.

Table 4 : Wholesale Price Index by Group of Commodities (Base 2007-08)									
No.	Group	Group Weight (%)	Indices			% Change Dec 2014 over		Impact (in %age points) Dec 2014 over	
			Dec 2014	Nov 2014	Dec 2013	Nov 2014	Dec 2013	Nov 2014	Dec 2013
	General	100.00	208.25	212.26	210.11	-1.89	-0.89	-1.89	-0.89
1.	Agriculture, Forestry & Fishery Products	25.77	213.09	219.26	212.36	-2.81	0.34	-0.75	0.09
2.	Ores & Minerals, Electricity, Gas & Water	12.04	247.20	247.62	243.89	-0.17	1.36	-0.02	0.19
3.	Food Products, Beverages & Tobacco, Textiles, Apparel & Leather Products	31.11	205.77	207.90	200.91	-1.02	2.42	-0.31	0.72
	i. Food Products, Bev. & Tobacco	20.07	215.39	216.60	203.49	-0.56	5.85	-0.11	1.14
	ii. Textiles and Apparel	10.33	187.64	191.71	196.00	-2.12	-4.27	-0.20	-0.41
	iii. Leather Products	0.71	197.27	197.27	199.45	0.00	-1.09	0.00	-0.01
4.	Other Transportable Goods except Metal Products, Machinery & Equipment	22.37	199.17	206.62	218.30	-3.61	-8.76	-0.79	-2.04
5.	Metal Products, Machinery & Equipment	8.72	172.37	172.72	168.65	-0.20	2.21	-0.01	0.15

Main contributors to month-on-month and year-on-year percentage changes are given below and detail is given in Annexure B.

1. **Month-on-month** Top few commodities which varied from previous month i.e. November, 2014 are given below:-

Increased: Poultry (10.08%), Woven Fabrics (8.66%), Glass Sheets (7.88%), Pesticides (6.35%), Fish (5.47%), Other Glass Articles (5.10%), Timber (3.10%) and Electric Wires (3.05%).

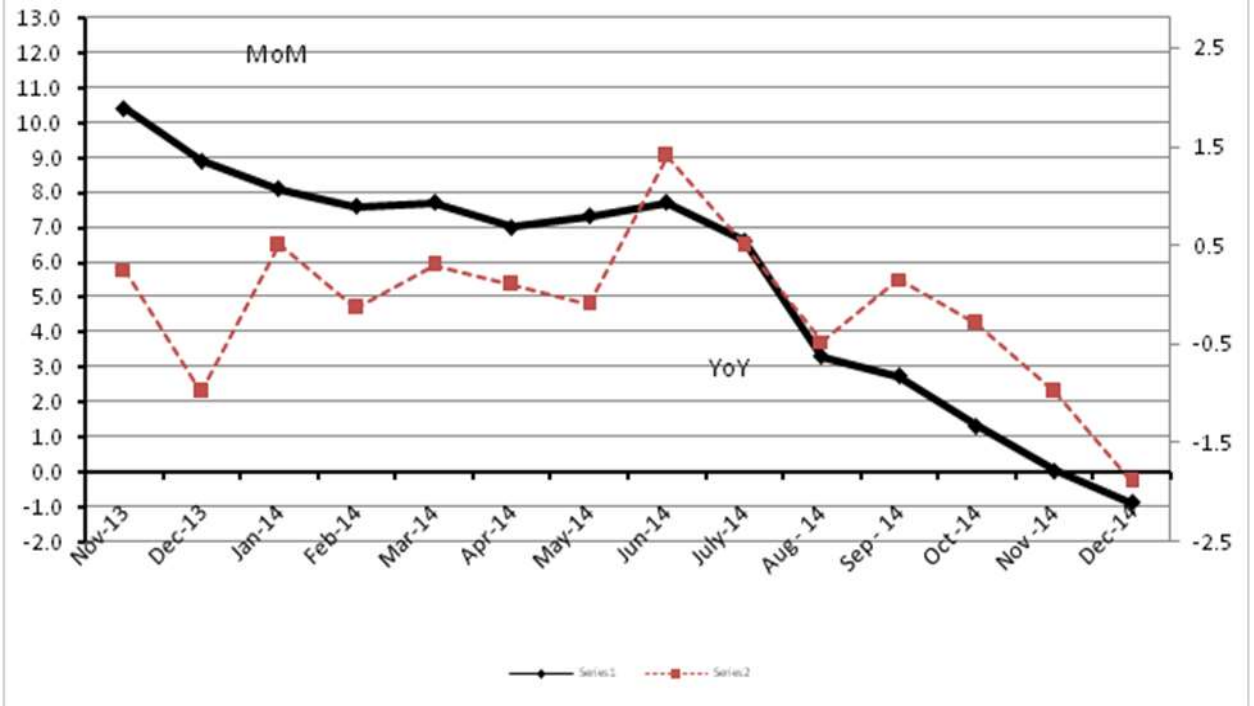
Decreased: Potatoes (42.96%), Vegetables (25.19%), Furnace Oil (14.50%), Motor Spirit (10.26%), Diesel (6.69%), Sugar (6.48%), Rice (4.85%), Cotton Yarn (4.76%), Fiber Crops(4.67%) and Kerosene Oil (4.65%).

2. **Year-on-year** Top few commodities which varied from previous year i.e. December, 2013 are given below:-

Increased: Leather without hair (44.18%), Dyeing Material (33.68%), Insecticides (28.85%), Ceramics & Sanitary Fixture (26.59%), Pesticides (25.79%), Stimulants and Spice Crops (22.26%) and Readymade Garments (21.98%).

Decreased: Other Leather N.E.C (27.66%), Furnace Oil (27.11%), Fiber Crops (25.83%), Motor Spirit (25.05%), Diesel (21.31%), Cotton Yarn (17.46%), Coffee & Tea (16.46%), Kerosene Oil (15.84%), Wheat (13.61%) and Nylon Yarn (12.98%) .

Figure 4: WPI Inflation



Annexure A: Consumer Price Index Numbers by Commodity Groups & Commodities (2007-08=100)

Item and Specification	Weight	Index Numbers			% Change in Dec 2014 over			
		Dec 14	Nov 14	Dec 13	Nov 2014	Dec 2013		
General	100.0000	196.79	198.79	188.68	-	1.01	+	4.30
Food and non-alcoholic Beverage	34.8343	215.18	220.25	209.87	-	2.30	+	2.53
01 Wheat	0.3477	207.94	211.83	232.97	-	1.84	-	10.74
02 Wheat Flour	4.1648	221.32	222.97	232.04	-	0.74	-	4.62
03 Wheat Product	0.0959	220.09	219.98	219.04	+	0.05	+	0.48
04 Besan	0.1500	173.03	172.67	171.84	+	0.21	+	0.69
05 Rice	1.5821	190.01	196.10	194.51	-	3.11	-	2.31
06 Cereals	0.1563	239.36	239.07	229.43	+	0.12	+	4.33
07 Bakery & Confectionary	1.1550	206.84	206.65	197.89	+	0.09	+	4.52
08 Nimco	0.4574	238.29	238.29	220.68	+	0.00	+	7.98
09 Meat	2.4303	244.09	243.83	229.58	+	0.11	+	6.32
10 Chicken	1.3596	193.92	173.51	185.00	+	11.76	+	4.82
11 Fish	0.2970	222.61	217.91	213.01	+	2.16	+	4.51
12 Milk Fresh	6.6800	249.48	247.74	232.61	+	0.70	+	7.25
13 Milk Products	0.6338	242.58	242.95	227.69	-	0.15	+	6.54
14 Milk Powder	0.1129	225.97	225.38	199.29	+	0.26	+	13.39
15 Eggs	0.4555	229.54	234.65	236.82	-	2.18	-	3.07
16 Mustard Oil	0.0952	158.68	158.89	160.20	-	0.13	-	0.95
17 Cooking Oil	1.7538	158.40	159.95	161.53	-	0.97	-	1.94
18 Vegetable Ghee	2.0714	153.52	155.25	157.90	-	1.11	-	2.77
19 Dry Fruits	0.2543	249.19	246.55	227.99	+	1.07	+	9.30
20 Fresh Fruits	1.8649	205.42	218.51	174.26	-	5.99	+	17.88
21 Pulse Masoor	0.2712	189.08	186.28	167.79	+	1.50	+	12.69
22 Pulse Moong	0.2336	306.98	295.69	252.58	+	3.82	+	21.54
23 Pulse Mash (Washed)	0.2098	227.22	229.35	191.03	-	0.93	+	18.94
24 Pulse Gram	0.2361	173.09	172.33	163.60	+	0.44	+	5.80
25 Gram Whole	0.1616	178.80	179.16	176.98	-	0.20	+	1.03
26 Beans	0.0269	243.06	245.30	237.14	-	0.91	+	2.50
27 Potatoes	0.4671	264.59	430.89	273.22	-	38.59	-	3.16
28 Onion	0.5312	146.98	203.33	296.92	-	27.71	-	<u>50.50</u>
29 Tomatoes	0.4391	158.75	141.15	190.66	+	12.47	-	16.74
30 Fresh Vegetables	1.6886	216.00	253.04	183.57	-	14.64	+	17.67
31 Sugar	1.0445	196.68	205.96	195.97	-	4.51	+	0.36
32 Gur	0.0220	253.17	263.18	251.24	-	3.80	+	0.77
33 Honey	0.0446	302.49	300.07	270.31	+	0.81	+	11.90
34 SweetMeat	0.2483	232.52	231.95	221.74	+	0.25	+	4.86
35 Beverages	1.1990	206.55	206.90	189.72	-	0.17	+	8.87
36 Jam, Tomato Ketchup & Pickles	0.2454	203.75	202.38	190.20	+	0.68	+	7.12
37 Condiments	0.2656	252.97	251.93	226.94	+	0.41	+	11.47
38 Spices	0.5441	234.25	234.33	215.63	-	0.03	+	8.64
39 Tea	0.8377	215.38	214.72	247.54	+	0.31	-	12.99
Alcoholic Beverages, Tobacco	1.4135	266.63	266.65	220.95	-	0.01	+	20.67
40 Cigarettes	1.3906	267.63	267.63	221.44	+	0.00	+	20.86
41 Betel Leaves & Nuts	0.0229	206.01	207.58	191.21	-	0.76	+	7.74
Clothing and footwear	7.5708	213.88	213.01	196.57	+	0.41	+	8.81
42 Cotton Cloth	1.7286	207.60	207.27	182.80	+	0.16	+	13.57
43 Woolen Cloth	0.8759	232.70	230.53	217.90	+	0.94	+	6.79
44 Readymade Garments	0.9739	213.12	212.79	195.84	+	0.16	+	8.82
45 Woolen Readymade Garments	0.3964	239.99	234.72	208.59	+	2.25	+	15.05
46 Hosiery	0.5094	225.57	224.72	206.31	+	0.38	+	9.34
47 Dopatta	0.4412	230.50	229.61	214.25	+	0.39	+	7.58
48 Cleaning and Laundry	0.2110	235.55	235.28	217.89	+	0.11	+	8.11
49 Tailoring	0.8840	263.37	262.50	237.19	+	0.33	+	11.04
50 Footwear	1.5504	164.29	164.29	162.96	+	0.00	+	0.82
Housing, water, Elec., Gas an	29.4149	174.04	174.01	164.44	+	0.02	+	5.84
51 House Rent	21.8149	162.06	162.06	150.59	+	0.00	+	7.62
52 Construction Input Items	0.5623	237.53	236.32	225.47	+	0.51	+	5.35
53 Construction Wage Rates	0.3331	204.99	204.38	191.24	+	0.30	+	7.19
54 Water Supply	0.4971	149.92	149.92	147.52	+	0.00	+	1.63
55 Electricity	4.3985	231.52	231.52	227.44	+	0.00	+	1.79
56 Gas	1.5756	143.81	143.81	143.81	+	0.00	+	0.00
57 Kerosene Oil	0.0057	243.33	260.32	296.77	-	6.53	-	18.01
58 Firewood Whole	0.2277	269.83	268.99	260.84	+	0.31	+	3.45
Furnishing and household equi	4.2082	208.80	208.26	195.83	+	0.26	+	6.62

Annexure A: Consumer Price Index Numbers by Commodity Groups & Commodities (2007-08=100)

Item and Specification	Weight	Index Numbers			% Change in Dec 2014 over	
		Dec 14	Nov 14	Dec 13	Nov 2014	Dec 2013
59 Furniture	0.3315	200.42	200.00	187.36	+ 0.21	+ 6.97
60 Household Textiles	0.6489	206.70	205.12	193.78	+ 0.77	+ 6.67
61 Household Equipment	0.5936	172.19	172.08	166.01	+ 0.06	+ 3.72
62 Utensils	0.3212	210.77	209.64	197.31	+ 0.54	+ 6.82
63 Plastic Products	0.2547	200.35	199.79	190.40	+ 0.28	+ 5.23
64 Washing Soaps & Detergents	0.7893	223.15	222.79	213.77	+ 0.16	+ 4.39
65 Sewing Needle & Dr Cell	0.1496	183.97	183.61	173.11	+ 0.20	+ 6.27
66 Household Servant	1.0432	226.18	226.02	206.44	+ 0.07	+ 9.56
67 Marriage Hall Charges	0.0762	230.52	230.24	207.66	+ 0.12	+ 11.01
Health	2.1868	176.31	175.37	166.83	+ 0.54	+ 5.68
68 Drugs & Medicines	1.2667	147.65	147.26	142.27	+ 0.26	+ 3.78
69 Medical Equipments	0.0080	222.46	221.31	209.70	+ 0.52	+ 6.08
70 Doctor (MBBS) Clinic Fee	0.5904	238.49	236.75	219.23	+ 0.73	+ 8.79
71 Medical Tests	0.3217	173.89	172.27	166.32	+ 0.94	+ 4.55
Transport	7.2023	185.17	190.59	197.03	- 2.84	- 6.02
72 Motor Vehicles	0.6630	163.77	163.75	161.22	+ 0.01	+ 1.58
73 Motor Vehicle Accessories	0.2439	230.12	229.63	222.12	+ 0.21	+ 3.60
74 Motor Fuel	3.0269	164.04	175.69	194.14	- 6.63	- 15.50
75 Mechanical Service	0.4552	210.62	209.51	198.85	+ 0.53	+ 5.92
76 Motor Vehicle Tax	0.1099	210.18	210.18	153.74	+ 0.00	+ 36.71
77 Transport Services	2.7034	204.73	206.36	208.24	- 0.79	- 1.69
Communication	3.2198	130.13	129.99	129.79	+ 0.11	+ 0.26
78 Postal Services	0.0662	226.10	221.37	215.89	+ 2.14	+ 4.73
79 Communication & Apparatus	3.1536	128.11	128.07	127.98	+ 0.03	+ 0.10
Recreation and culture	2.0227	189.60	189.55	183.13	+ 0.03	+ 3.53
80 Recreation & Culture	0.8634	128.06	128.04	126.50	+ 0.02	+ 1.23
81 Text Books	0.5706	280.89	280.89	267.10	+ 0.00	+ 5.16
82 Newspapers	0.1934	175.42	175.42	172.95	+ 0.00	+ 1.43
83 Stationery	0.3953	199.16	198.96	190.60	+ 0.10	+ 4.49
Education	3.9431	192.41	192.41	168.34	+ 0.00	+ 14.30
84 Education	3.9431	192.41	192.41	168.34	+ 0.00	+ 14.30
Restaurants and hotels	1.2286	244.59	242.78	228.16	+ 0.75	+ 7.20
85 Readymade Food	1.2286	244.59	242.78	228.16	+ 0.75	+ 7.20
Misc. goods and services	2.7550	220.73	220.35	210.35	+ 0.17	+ 4.93
86 Personal Care	1.4935	204.68	204.40	192.91	+ 0.14	+ 6.10
87 Cosmetics	0.3853	187.35	185.73	176.30	+ 0.87	+ 6.27
88 Blades	0.0322	185.42	185.42	181.71	+ 0.00	+ 2.04
89 Personal Equipments	0.8440	265.72	265.71	257.84	+ 0.00	+ 3.06

Annexure B: Wholesale Price Indices by Major Groups & Commodities

(2007-08=100)

Item and Specification	Weight	Index Numbers			% Change in Dec 2014 over			
		Dec 14	Nov 14	Dec 13	Nov 2014	Dec 2013		
General	100.0000	208.25	212.26	210.11	-	1.89	-	0.89
Agriculture Forestry & Fisher	25.7674	213.09	219.26	212.36	-	2.81	+	0.34
001 Wheat	0.6297	210.79	216.76	244.00	-	2.75	-	13.61
002 Maize	0.6764	186.45	191.93	175.94	-	2.86	+	5.97
003 Rice	2.4413	172.32	181.10	176.55	-	4.85	-	2.40
004 Sorghum / Jowar	0.0214	280.16	280.16	248.44	+	0.00	+	12.77
005 Millet / Bajra	0.0374	167.42	171.52	175.79	-	2.39	-	4.76
006 Vegetables	1.2441	213.83	285.84	220.02	-	25.19	-	2.81
007 Fresh Fruits	1.5144	215.51	210.77	183.06	+	2.25	+	17.73
008 Dry Fruits	0.2478	224.99	220.92	201.08	+	1.84	+	11.89
009 Cotton Seeds	1.1511	192.60	188.86	168.48	+	1.98	+	14.32
010 Other Oil Seeds	0.0722	187.36	188.07	182.45	-	0.38	+	2.69
011 Edible Roots / Potatoes	0.2540	275.99	483.87	296.10	-	42.96	-	6.79
012 Stimulant & Spice Crops	0.1634	354.12	362.38	289.64	-	2.28	+	22.26
013 Pulses	0.4901	204.27	202.21	186.65	+	1.02	+	9.44
014 Sugar Crops	1.0725	267.92	267.92	267.92	+	0.00	+	0.00
015 Fibre Crops	5.3169	155.90	163.54	210.20	-	4.67	-	25.83
016 Unmanufactured Tobacco	0.0742	217.23	212.62	187.30	+	2.17	+	15.98
017 Poultry	0.5633	192.50	174.87	185.85	+	10.08	+	3.58
018 Raw Milk from Bovine Animals	7.0279	251.69	250.31	224.04	+	0.55	+	12.34
019 Eggs	0.5034	232.79	241.19	245.62	-	3.48	-	5.22
020 Raw Animal Materials / Wool	0.0351	178.68	173.82	153.55	+	2.80	+	16.37
021 Hides & Fur Skins, Raw	0.4834	157.14	156.37	147.61	+	0.49	+	6.46
022 Fuel Wood in Logs	0.0179	250.46	250.46	238.23	+	0.00	+	5.13
023 Fish Live Fresh or Chilled	1.7295	274.05	259.83	249.61	+	5.47	+	9.79
Ores/Minerals, Elec., Gas & W	12.0389	247.20	247.62	243.89	-	0.17	+	1.36
024 Coal not Agglomerated	0.7508	223.53	223.53	223.53	+	0.00	+	0.00
025 Natural Gas Liquified	5.7385	203.99	204.85	205.11	-	0.42	-	0.55
026 Salt & Pure Sodium Chloride	0.0584	247.16	247.16	220.90	+	0.00	+	11.89
027 Electrical Energy	5.4912	295.61	295.61	287.44	+	0.00	+	2.84
Food, Beverages, Tobacco, Textile	31.1122	205.77	207.90	200.91	-	1.02	+	2.42
Food Products, Beverages &	20.0718	215.39	216.60	203.49	-	0.56	+	5.85
028 Meat of Animals	3.4559	257.59	257.41	239.95	+	0.07	+	7.35
029 Vegetables & Fruit Juice	0.0058	197.07	196.79	193.79	+	0.14	+	1.69
030 Dried Fruits & Nuts	0.1733	229.74	227.45	223.51	+	1.01	+	2.79
031 Fruit Juices	0.3880	171.93	171.93	166.02	+	0.00	+	3.56
032 Vegetable Oils Refined	1.9242	161.32	163.13	161.60	-	1.11	-	0.17
033 Vegetable Ghee	1.5632	132.27	137.39	142.45	-	3.73	-	7.15
034 Oil Cakes	0.9611	200.15	198.27	183.79	+	0.95	+	8.90
035 Processed Liquid Milk	4.4437	245.21	242.78	210.94	+	1.00	+	16.25
036 Milk & Cream in Solid Form	0.0316	222.24	222.04	193.72	+	0.09	+	14.72
037 Ice Cream	0.0047	219.91	219.91	209.79	+	0.00	+	4.82
038 Dairy Products N.E.C	0.0117	238.90	237.72	217.26	+	0.50	+	9.96
039 Wheat Flour	2.3034	202.20	202.78	214.45	-	0.29	-	5.71
040 Other Cereal Flour	0.0604	142.81	140.16	136.20	+	1.89	+	4.85
041 Sugar Refined	1.7975	204.57	218.74	202.31	-	6.48	+	1.12
042 Chocolate	0.0139	99.19	99.19	99.19	+	0.00	+	0.00
043 Sugar Confectionary	0.0738	102.28	102.28	102.28	+	0.00	+	0.00
044 Coffee & Tea	0.7303	188.37	188.05	226.18	+	0.17	-	16.72
045 Spices	0.1449	188.69	188.69	194.39	+	0.00	-	2.93
046 Other Food Products	0.0336	296.60	296.60	308.23	+	0.00	-	3.77
047 Mineral Water	0.0207	185.63	185.63	181.84	+	0.00	+	2.08
048 Beverages	0.6303	171.52	171.52	152.77	+	0.00	+	12.27
049 Tobacco Products	1.2998	290.52	290.52	242.41	+	0.00	+	19.85
Textiles & Apparels	10.3289	187.64	191.71	196.00	-	2.12	-	4.27
050 Cotton Yarn	5.2491	177.90	186.79	215.52	-	4.76	-	17.46
051 Nylon Yarn	0.1719	158.14	161.23	181.73	-	1.92	-	12.98
052 Blended Yarn	0.1689	191.73	194.74	201.89	-	1.55	-	5.03
053 Woven Fabrics	0.0128	258.39	237.79	226.82	+	8.66	+	13.92
054 Cotton Fabrics	0.6343	200.51	200.51	187.77	+	0.00	+	6.78
055 Other Fabrics	1.1016	206.11	206.11	179.06	+	0.00	+	15.11
056 Silk & Reyon Fabrics	0.7350	177.28	177.28	161.09	+	0.00	+	10.05

Annexure B: Wholesale Price Indices by Major Groups & Commodities

(2007-08=100)

Item and Specification	Weight	Index Numbers			% Change in Dec 2014 over	
		Dec 14	Nov 14	Dec 13	Nov 2014	Dec 2013
057 Towels	0.1235	265.62	260.85	234.25	+ 1.83	+ 13.39
058 Blankets	0.0029	235.86	232.93	204.97	+ 1.26	+ 15.07
059 Bed Sheets	0.0913	253.21	249.35	236.05	+ 1.55	+ 7.27
060 Quilts	0.0019	191.05	188.74	169.53	+ 1.22	+ 12.69
061 Woolen Carpets	0.0383	132.14	132.14	113.69	+ 0.00	+ 16.23
062 Synthetic Carpets	0.0566	126.27	126.27	116.10	+ 0.00	+ 8.76
063 Hosiery Products	0.8832	215.35	210.35	187.81	+ 2.38	+ 14.66
064 Readymade Garments	1.0576	186.77	186.77	153.12	+ 0.00	+ 21.98
Leather Products	0.7115	197.27	197.27	199.44	+ 0.00	- 1.09
065 Leather Without Hair	0.2973	215.02	215.02	149.13	+ 0.00	+ 44.18
066 Other Leather N.E.C	0.2567	215.39	215.39	297.73	+ 0.00	- 27.66
067 Footwears	0.1575	134.22	134.22	134.22	+ 0.00	+ 0.00
Other Transportable Goods	22.3659	199.17	206.62	218.30	- 3.61	- 8.76
068 Timber	0.0165	196.61	190.70	173.24	+ 3.10	+ 13.49
069 Printing Paper	0.4279	169.34	169.34	169.75	+ 0.00	- 0.24
070 Hard Board	0.1579	229.17	229.17	229.17	+ 0.00	+ 0.00
071 Coke	0.2797	163.45	163.45	163.45	+ 0.00	+ 0.00
072 Motor Spirit	1.5336	142.78	159.11	190.50	- 10.26	- 25.05
073 Diesel Oil	5.2664	219.90	235.67	279.46	- 6.69	- 21.31
074 Kerosine Oil	0.2151	242.40	254.18	288.01	- 4.63	- 15.84
075 Furnace Oil	3.2664	134.79	157.65	184.93	- 14.50	- 27.11
076 Mobil Oil	0.7114	201.53	201.53	193.09	+ 0.00	+ 4.37
077 Chemicals	1.7720	198.36	198.36	172.77	+ 0.00	+ 14.81
078 Dyeing Material	0.1539	143.77	143.77	107.55	+ 0.00	+ 33.68
079 Fertilizers	2.8657	272.69	270.69	266.56	+ 0.74	+ 2.30
080 Pesticides	0.2763	283.64	266.71	225.48	+ 6.35	+ 25.79
081 Insecticides	0.1276	172.37	177.41	133.78	- 2.84	+ 28.85
082 Paints & Varnishes	0.1916	285.78	280.05	265.56	+ 2.05	+ 7.61
083 Medicines	1.1428	145.19	144.94	138.77	+ 0.17	+ 4.63
084 Soaps & Detergents	0.8168	178.23	177.83	181.19	+ 0.22	- 1.63
085 Auto Tyres	0.2703	192.43	188.28	185.73	+ 2.20	+ 3.61
086 Plastic Products	0.4550	218.51	214.92	201.76	+ 1.67	+ 8.30
087 Glass sheets	0.2089	226.39	209.86	207.75	+ 7.88	+ 8.97
088 Other Glass Articles	0.1635	242.20	230.45	214.09	+ 5.10	+ 13.13
089 Ceramics & Sanitary Fixture	0.0244	216.53	212.17	171.05	+ 2.05	+ 26.59
090 Bricks, Blocks & Tiles	0.1566	206.80	205.47	196.76	+ 0.65	+ 5.10
091 Cement	1.8145	208.92	209.76	204.86	- 0.40	+ 1.98
092 Bed Foam	0.0006	156.67	155.17	149.67	+ 0.97	+ 4.68
093 Matches	0.0505	143.20	143.20	143.20	+ 0.00	+ 0.00
Metal Product, Machinery & Eq	8.7156	172.37	172.72	168.65	- 0.20	+ 2.21
094 Pig Iron	0.0593	128.97	128.97	128.97	+ 0.00	+ 0.00
095 Steel Bar & Sheets	1.4022	145.97	148.95	140.33	- 2.00	+ 4.02
096 Pipe Fittings	0.0780	191.94	191.94	168.00	+ 0.00	+ 14.25
097 Steel Products	0.3879	173.80	173.80	170.12	+ 0.00	+ 2.16
098 Engines & Motors	0.0046	109.07	109.07	109.07	+ 0.00	+ 0.00
099 Vacuum Pumps	0.0155	115.39	115.39	115.39	+ 0.00	+ 0.00
100 Air Conditioners	0.0049	195.53	195.53	181.12	+ 0.00	+ 7.96
101 Cultivators	0.0551	226.90	226.90	226.90	+ 0.00	+ 0.00
102 Chuff Cutter	0.1293	149.20	149.20	144.94	+ 0.00	+ 2.94
103 Tractors	0.0028	214.54	214.54	193.29	+ 0.00	+ 10.99
104 Lathe Machines	0.0525	208.81	208.81	208.81	+ 0.00	+ 0.00
105 Concrete Mixture	0.0107	138.83	138.83	138.83	+ 0.00	+ 0.00
106 Fridge,WashM,SewM,Fans,Iron	1.1645	198.06	197.85	191.24	+ 0.11	+ 3.57
107 Electric Wires	0.0912	190.43	184.79	169.55	+ 3.05	+ 12.31
108 Lighting Equipments	1.4431	165.30	165.30	162.71	+ 0.00	+ 1.59
109 Radio & Television	0.1843	126.49	126.49	126.49	+ 0.00	+ 0.00
110 Motor Vehicles	0.0244	183.03	183.03	181.93	+ 0.00	+ 0.60
111 Motorcycles	0.2570	128.20	126.92	125.41	+ 1.01	+ 2.22
112 Bicycles	3.3483	182.84	182.84	180.99	+ 0.00	+ 1.02