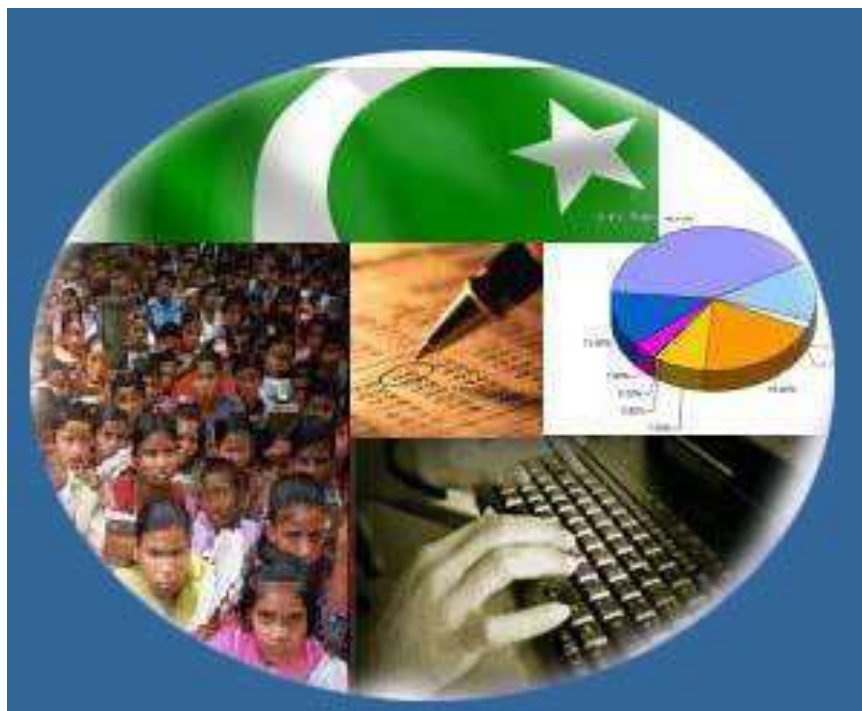




# Monthly Review on Price Indices



**February, 2014**  
**(Base 2007-08)**

**Government of Pakistan**  
**Statistics Division**  
**Pakistan Bureau of Statistics**  
**Islamabad**



## I. Inflation in Brief

1. CPI inflation, General, increased by 7.9% on year-on-year basis in February 2014 as compared to 7.9% in the previous month and 7.4% in February 2013. On month-on-month basis, it decreased by 0.3% in February 2014 as compared to an increase of 0.5% in the previous month and decreased by 0.3% in February 2013.
2. Core inflation measured by non-food non-energy CPI (Core NFNE) increased by 7.8% in February 2014 as compared to 8.0% in January 2014 (YoY) and by 9.6% in February 2013. Core NFNE inflation on MoM basis increased by 0.2% in February 2014 as compared to 1.0% a month earlier and 0.4% in February 2013.
3. Core inflation, measured by 20% weighted trimmed mean CPI (Core Trimmed) increased by 8.1% in February 2014 and by 8.2% in January 2014 (YoY) which increased by 9.2% in February 2013. Core Trimmed inflation has increased by 0.2% on MoM basis in February 2014 as compared to 0.6% in January 2014 which increased by 0.2% in February 2013.
4. SPI inflation on YoY basis increased by 7.5% in February 2014 as compared with 7.7% a month earlier and 9.4% in February 2013. On MoM basis, it decreased by 0.1% in February 2014 as compared to a decrease of 1.2% a month earlier and increased by 0.1% in February 2013.
5. WPI inflation on YoY basis increased to 7.6% in February 2014 compared with 8.1% a month earlier and 8.3% in February 2013. WPI inflation on MoM basis decreased by 0.1% in February 2014 as compared to an increase of 0.5% a month earlier and increased by 0.3% in February 2013.
6. Figures 1 and 2 show graphically the data of Table 1. Table 1.1 shows "Period Average" and "YoY" percent changes in indices of three years.

**Table 1: Inflation (%) (Base 2007-08)**

Period	CPI						Core Inflation				SPI**		WPI	
	General		Food		Non-food		NFNE*		Trimmed		YoY	MoM	YoY	MoM
	YoY	MoM	YoY	MoM	YoY	MoM	YoY	MoM	YoY	MoM				
Jan 13	8.1	1.7	8.1	1.9	8.1	1.5	9.9	1.2	9.9	1.0	9.2	1.9	8.6	1.2
Feb 13	7.4	-0.3	7.4	-1.3	7.4	0.3	9.6	0.4	9.2	0.2	9.4	0.1	8.3	0.3
Mar 13	6.6	0.4	6.3	0.5	6.7	0.3	9.0	0.4	8.4	0.2	8.7	0.8	7.9	0.3
Apr 13	5.8	1.1	5.5	1.4	6.0	0.9	8.7	1.1	7.6	0.7	6.6	-0.3	6.8	0.8
May 13	5.1	0.5	6.5	1.1	4.1	0.1	8.1	0.3	6.7	0.3	6.8	0.1	4.1	-0.4
Jun 13	5.9	0.7	7.9	1.1	4.4	0.5	7.8	0.4	6.8	0.6	7.9	2.5	5.2	1.0
Jul 13	8.3	2.0	9.2	3.0	7.6	1.3	8.2	1.5	7.8	1.2	9.8	2.3	6.5	1.6
Aug 13	8.5	1.2	10.3	2.0	7.3	0.6	8.5	0.6	7.9	0.6	10.1	1.5	8.3	2.6
Sep 13	7.4	-0.3	7.9	-1.5	7.0	0.6	8.6	0.5	7.6	0.6	8.8	0.1	8.7	0.7
Oct 13	9.1	2.0	9.8	1.7	8.6	2.2	8.4	0.9	9.0	0.8	10.5	1.2	9.8	1.1
Nov 13	10.9	1.3	13.0	2.6	9.4	0.3	8.5	0.3	9.2	0.4	14.1	3.2	10.4	0.2
Dec 13	9.2	-1.3	9.3	-3.3	9.1	0.2	8.2	0.2	8.7	0.4	11.1	-2.5	8.9	-1.0
Jan 14	7.9	0.5	7.2	0.0 <sup>1</sup>	8.4	0.9	8.0	1.0	8.2	0.6	7.7	-1.2	8.1	0.5
Feb 14	7.9	-0.3	7.6	-1.0	8.2	0.2	7.8	0.2	8.1	0.2	7.5	-0.1	7.6	-0.1

\*NFNE is non-food non-energy,

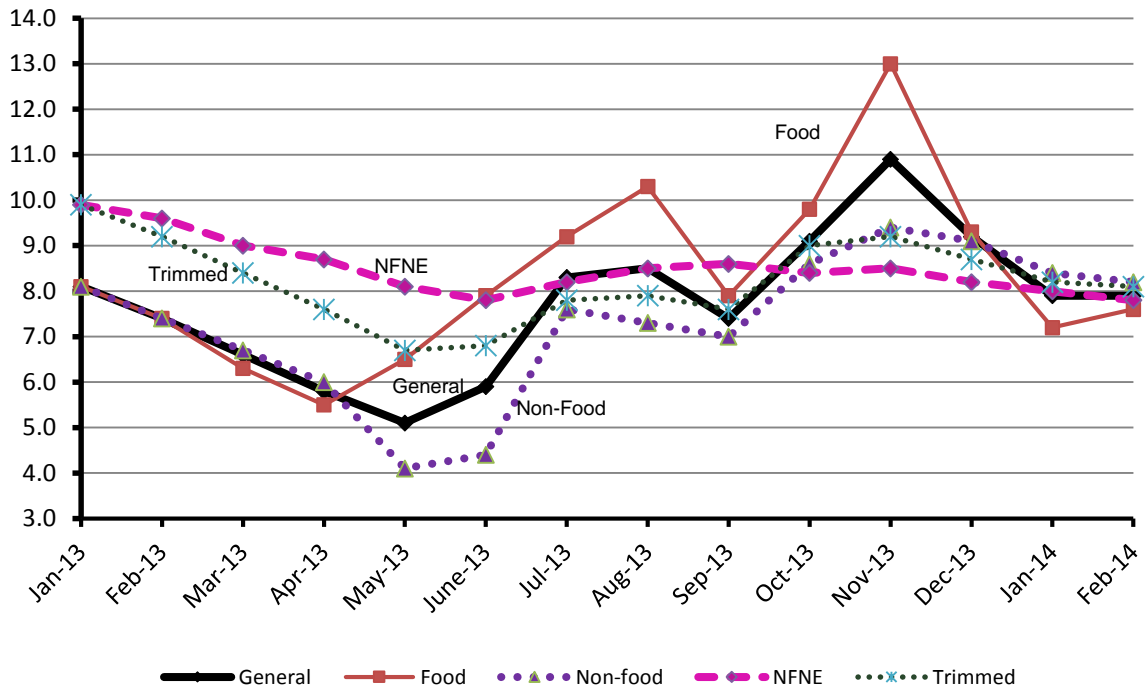
\*\* SPI for quintile 1

<sup>1</sup> Actual figure is -0.04, displayed in rounded figure

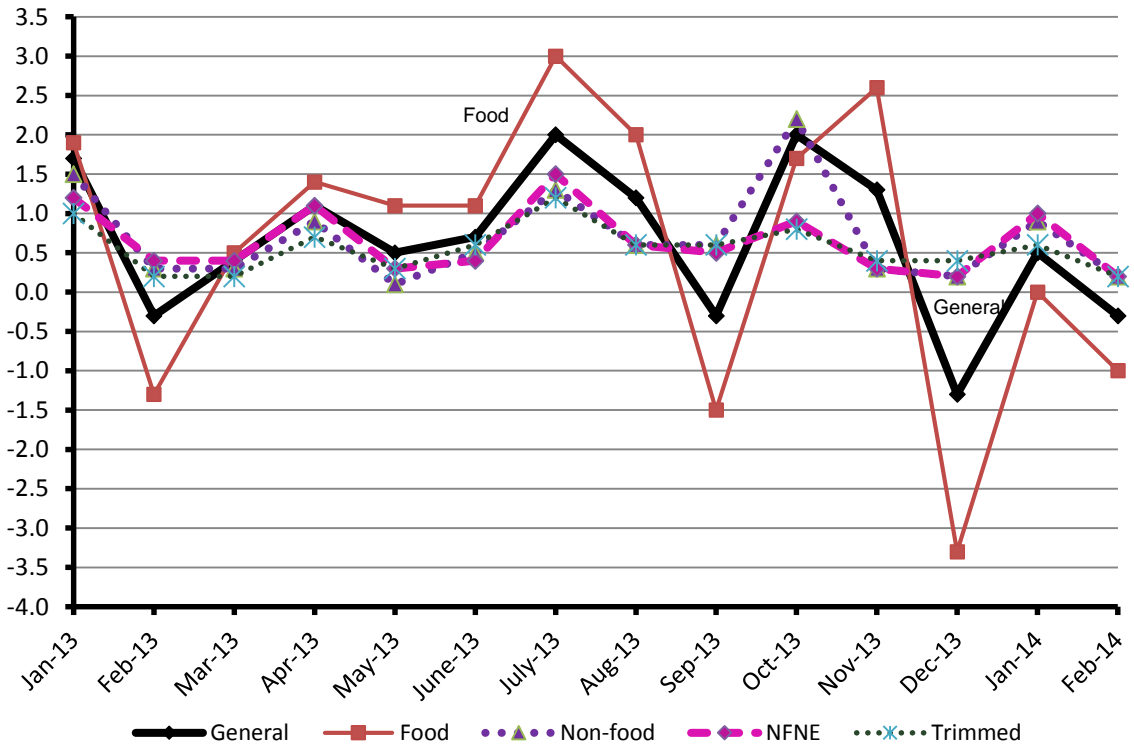
**Table 1.1 : Period Average and YoY % Changes of Indices (Base 2007-08)**

Index	Averages July-February % Changes			February over February % Changes		
	2013-14	2012-13	2011-12	2013-14	2012-13	2011-12
CPI	8.65	8.16	10.79	7.93	7.38	11.05
SPI	9.94	7.93	6.69	7.52	9.42	5.22
WPI	8.53	8.07	13.23	7.59	8.33	7.21

**Figure 1: CPI Inflation YoY, Special Indices**



**Figure 2: CPI Inflation MoM, Special Indices**



## II. Consumer Price Index (CPI)

The Consumer Price Index of February, 2014 has decreased by 0.32% over January 2014 and increased by 7.93% over corresponding month of last year.

**Table 2 : Consumer Price Index by Group of Commodities and Services (Base 2007-08)**

No	Group	Group Weight (%)	Indices			% Change Feb 2014 over		Impact (In % points) Feb 2014 Over	
			Feb 2014	Jan 2014	Feb 2013	Jan 2014	Feb 2013	Jan 2014	Feb 2013
	General	<b>100.00</b>	<b>189.00</b>	<b>189.60</b>	<b>175.11</b>	<b>-0.32</b>	<b>7.93</b>	<b>-0.32</b>	<b>7.93</b>
1.	Food & Non-alcoholic Bev.	34.83	207.34	209.65	193.70	-1.10	7.04	-0.43	2.70
	<i>Non-perishable Food Items</i>	29.84	211.97	212.55	198.29	-0.27	6.90	-0.10	2.32
	<i>Perishable Food Items</i>	4.99	179.61	192.27	166.26	-6.58	8.03	-0.33	0.38
2.	Alcoholic Bev. & Tobacco	1.41	221.77	221.80	191.17	-0.01	16.01	0.00	0.25
3.	Clothing & Footwear	7.57	199.16	198.27	178.43	0.45	11.62	0.04	0.90
4.	Housing, Water, Electricity, Gas & Fuels	29.41	166.96	166.94	152.79	0.01	9.27	0.00	2.38
5.	Furnishing & Household Equipment Maintenance	4.21	197.91	196.75	181.90	0.59	8.80	0.03	0.38
6.	Health	2.19	167.51	166.85	158.02	0.40	6.01	0.01	0.12
7.	Transport	7.20	197.33	197.19	188.35	0.07	4.77	0.01	0.37
8.	Communication	3.22	129.81	129.79	128.63	0.02	0.92	0.00	0.02
9.	Recreation & Culture	2.02	183.42	183.35	167.31	0.04	9.63	0.00	0.19
10.	Education	3.94	168.48	168.48	155.83	0.00	8.12	0.00	0.29
11.	Restaurants & Hotels	1.23	233.31	231.12	207.28	0.95	12.56	0.01	0.18
12.	Miscellaneous	2.76	212.47	211.23	202.75	0.59	4.79	0.02	0.15

Main contributors to month-on-month and year-on-year percentage changes are given below and detail is given in Annexure A.

1. **Month-on-month** Top few commodities which varied from previous month i.e. January 2014 are given below:-

**Food Items Increased:** Pulse Gram (5.62%), Pulse Moong (2.21%), Pulse Masoor (2.10%), Condiments (1.68%), Milk Powder (1.65%), Gram Whole (1.62%), Beans (1.03%), Besan (1.02%), Wheat and Readymade Food (0.96% each), Spices (0.87%) and Milk Fresh (0.82%).

**Decreased:** Tomatoes (35.23%), Chicken (13.85%), Onions (10.67%), Eggs (4.35%), Fresh Vegetables (3.66%), Potatoes (3.40%), Fresh Fruits (2.43%), Sugar (1.80%), Tea (1.44%), Gur (1.33%), Betel Leaves & Nuts (0.83%), Fish (0.71%), Mustard Oil (0.32%) and Dry Fruits (0.11%).

**Non-food Items Increased:** Marriage Hall Charges (1.93%), Doctor (MBBS) Clinic Fee (0.96%), Cosmetics (0.82%), Hosiery and Cleaning & Laundry (0.76% each), Furniture (0.73%), Utensils (0.72%), Household Textiles and Personal Care (0.71% each).

**Decreased:** Kerosene Oil (0.60%) and Motor Fuel (0.20%).

2. **Year-on-year:** Top few commodities which varied from previous year i.e. February 2013 are given below:-

**Food Items Increased:** Potatoes (35.38%), Fresh Vegetables (22.58%), Pulse Masoor (19.20%), Wheat (18.18%), Pulse Moong (18.15%), Wheat Products (17.67%), Wheat Flour (16.41%), Cigarettes (16.20%), Onions (15.37%), Eggs (14.57%), Beans (14.05%), Readymade Food (12.56%), Milk Powder (11.28%) and Bakery & Confectionary (11.13%).

**Decreased:** Tomatoes (40.10%), Besan (26.09%), Pulse Gram (26.04%), Gram Whole (19.55%), Spices (9.51%), Sugar (2.25%) and Mustard Oil (1.86%).

**Non-food Items Increased:** Postal Services (23.66%), Cosmetics (19.14%), Electricity (15.82%), Sewing Needle & Dry Cell (15.78%), Text Books (15.60%), Tailoring (13.53%), Cotton Cloth (13.10%), Woolen Readymade Garments (12.96%), Doctor (MBBS) Clinic Fee (12.76%), Readymade Garments (12.00%), Cleaning & Laundry (11.52%) and Utensils (11.42%).

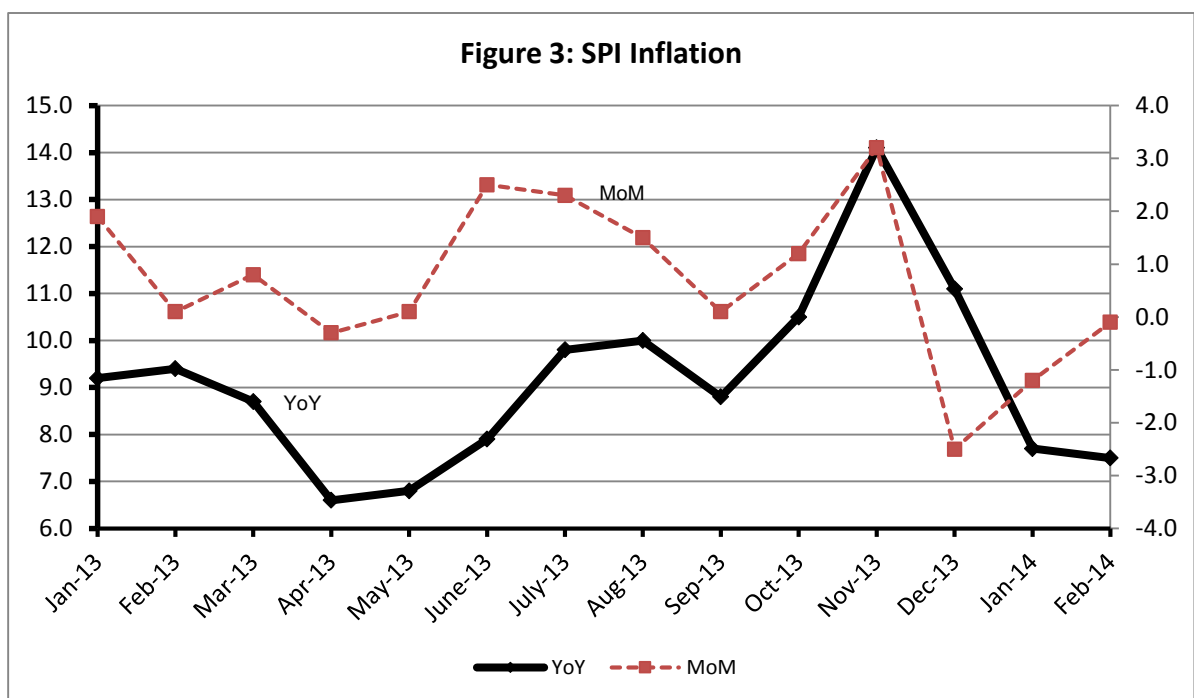
**Decreased:** Personal Equipments (2.19%).

### III. Sensitive Price Indicator

Quintile-wise percentage changes YoY and MoM are given below in Table 3. The series from January 2013 to February 2014 is also graphed below in Figure 3.

**Table 3 : Sensitive Price Indicator (Base 2007-08)**

Quintiles	Indices			% Change Feb 2014 over	
	Feb 2014	Jan 2014	Feb 2013	Jan 2014	Feb 2013
1	199.49	199.67	185.53	-0.09	7.52
2	205.11	205.44	191.63	-0.16	7.03
3	208.79	209.20	190.18	-0.20	9.79
4	210.92	211.43	191.51	-0.24	10.14
5	210.16	210.68	191.94	-0.25	9.49
Combined	208.54	208.99	190.79	-0.22	9.30



#### IV. Wholesale Price Index

The Wholesale Price Index for February 2014 is decreased by 0.14% over January 2014. It is increased by 7.59% over the corresponding month of the last year. YoY and MoM movements, from January 2013 to February 2014 are also graphed below in Figure 4.

**Table 4 : Wholesale Price Index by Group of Commodities (Base 2007-08)**

No.	Group	Group Weight (%)	Indices			% Change Feb 2014 over		Impact (in %age points) Feb 2014 over	
			Feb 2014	Jan 2014	Feb 2013	Jan 2014	Feb 2013	Jan 2014	Feb 2013
	<b>General</b>	<b>100.00</b>	<b>210.94</b>	<b>211.23</b>	<b>196.06</b>	<b>-0.14</b>	<b>7.59</b>	<b>-0.14</b>	<b>7.59</b>
1.	Agriculture, Forestry & Fishery Products	25.77	214.62	216.41	198.37	-0.83	8.19	-0.22	2.14
2.	Ores & Minerals, Electricity, Gas & Water	12.04	243.36	243.68	215.52	-0.13	12.92	-0.02	1.71
3.	Food Products, Beverages & Tobacco, Textiles, Apparel & Leather Products	31.11	201.73	201.47	190.68	0.13	5.80	0.04	1.75
	i. Food Products, Bev. & Tobacco	20.07	202.61	202.88	193.06	-0.13	4.95	-0.03	0.98
	ii. Textiles and Apparel	10.33	197.85	197.40	190.87	0.23	3.66	0.02	0.37
	iii. Leather Products	0.71	233.34	220.57	120.99	5.79	92.85	0.04	0.41
4.	Other Transportable Goods except Metal Products, Machinery & Equipments	22.37	218.22	217.85	204.80	0.17	6.55	0.04	1.53
5.	Metal Products, Machinery & Equipment	8.72	169.45	168.90	159.08	0.33	6.52	0.02	0.46

Main contributors to month-on-month and year-on-year percentage changes are given below and detail is given in Annexure B.

1. **Month-on-month** Top few commodities which varied from previous month i.e. January, 2014 are given below:-

**Increased:** Other Leather N.E.C (8.27%), Other Cereal Flour (6.56%), Potatoes (4.81%), Fresh Fruits (4.37%), Stimulants & Spice Crops (4.04%), Leather Without Hair (3.77%), Milk & Cream in Solid Form (2.49%), Insecticides (2.18%), Cotton Seeds (1.60%), Wheat (1.42%), Salt (1.40%), Maize (1.38%), Fertilizers (1.16%), Pulses (1.14%), Oil Cakes (1.10%) and Dry Fruits (1.05%).

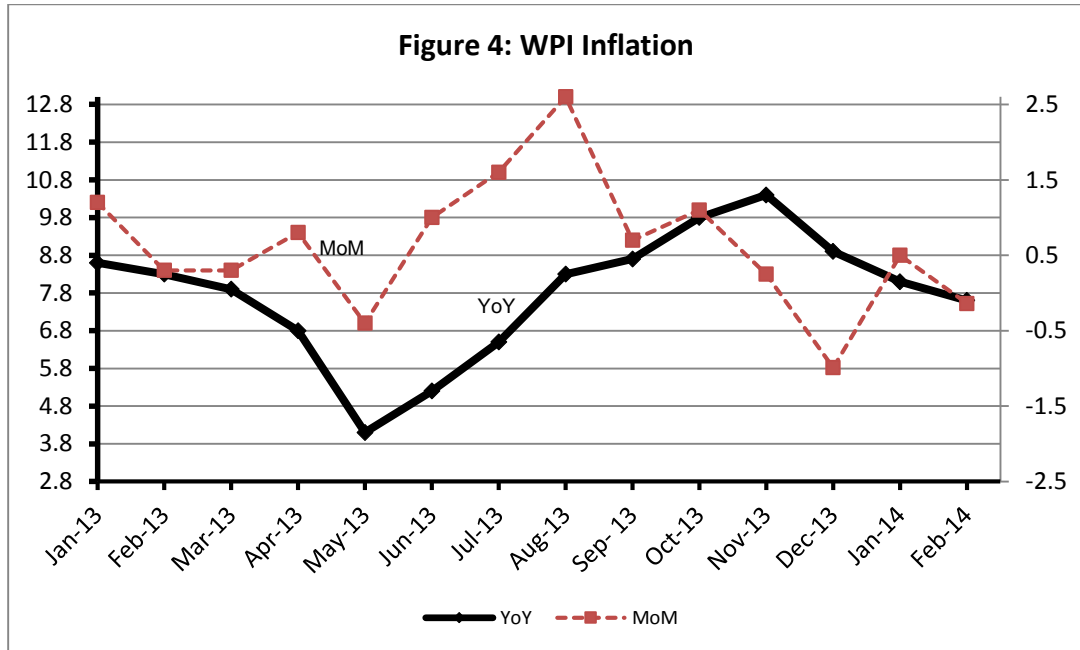
**Decreased:** Poultry (18.75%), Vegetables (14.63%), Eggs (4.99%), Sugar Refined & Bajra (1.85% each) , Dried Fruits & Nuts (1.54%) and Nylon Yarn (1.04%).



2. **Year-on-year** Top few commodities which varied from previous year i.e. February, 2013 are given below:-

**Increased:** Other Leather N.E.C (201.97%), Stimulants and Spice Crops (81.73%), Potatoes (64.09%), Leather without hair (52.70%), Lathe Machine (41.39%), Salt (35.89%), Jowar ( 32.45%), Fish (29.25%) and Electrical Energy ( 27.13%), Eggs (22.93%), Ice Cream (20.92%) and Milk & Cream in Solid Form (20.65%).

**Decreased:** Spices (30.02%) and Other Cereal Flour (28.58%).





**Annexure A: Consumer Price Index Numbers by Commodity Groups & Commodities (2007-08=100)**

Item and Specification	Weight	Index Numbers			% Change in Feb 2014 over			
		Feb 14	Jan 14	Feb 13	Jan 2014	Feb 2013		
<b>General</b>	<b>100.0000</b>	<b>189.00</b>	<b>189.60</b>	<b>175.11</b>	-	<b>0.32</b>	+	<b>7.93</b>
<b>Food and non-alcoholic Bevera</b>	<b>34.8343</b>	<b>207.34</b>	<b>209.64</b>	<b>193.70</b>	-	<b>1.10</b>	+	<b>7.04</b>
01 Wheat	0.3477	235.76	233.51	199.50	+	0.96	+	18.18
02 Wheat Flour	4.1648	233.21	231.86	200.33	+	0.58	+	16.41
03 Wheat Product	0.0959	222.86	221.40	189.40	+	0.66	+	17.67
04 Besan	0.1500	174.67	172.90	236.32	+	1.02	-	26.09
05 Rice	1.5821	194.21	193.88	181.58	+	0.17	+	6.96
06 Cereals	0.1563	232.00	230.58	210.83	+	0.62	+	10.04
07 Bakery & Confectionary	1.1550	200.07	199.21	180.03	+	0.43	+	11.13
08 Nimco	0.4574	222.25	220.99	200.35	+	0.57	+	10.93
09 Meat	2.4303	233.63	231.91	219.73	+	0.74	+	6.33
10 Chicken	1.3596	191.66	222.46	181.69	-	13.85	+	5.49
11 Fish	0.2970	212.60	214.11	202.68	-	0.71	+	4.89
12 Milk Fresh	6.6800	234.51	232.61	219.54	+	0.82	+	6.82
13 Milk Products	0.6338	228.79	227.93	211.29	+	0.38	+	8.28
14 Milk Powder	0.1129	206.77	203.41	185.81	+	1.65	+	11.28
15 Eggs	0.4555	206.65	216.04	180.37	-	4.35	+	14.57
16 Mustard Oil	0.0952	159.46	159.97	162.48	-	0.32	-	1.86
17 Cooking Oil	1.7538	162.25	161.75	161.71	+	0.31	+	0.33
18 Vegetable Ghee	2.0714	158.45	158.24	157.51	+	0.13	+	0.60
19 Dry Fruits	0.2543	231.00	231.25	212.97	-	0.11	+	8.47
20 Fresh Fruits	1.8649	175.77	180.15	174.69	-	2.43	+	0.62
21 Pulse Masoor	0.2712	174.73	171.13	146.58	+	2.10	+	19.20
22 Pulse Moong	0.2336	262.23	256.55	221.94	+	2.21	+	18.15
23 Pulse Mash (Washed)	0.2098	192.61	191.91	191.01	+	0.36	+	0.84
24 Pulse Gram	0.2361	170.92	161.82	231.09	+	5.62	-	26.04
25 Gram Whole	0.1616	178.96	176.10	222.44	+	1.62	-	19.55
26 Beans	0.0269	246.35	243.84	216.00	+	1.03	+	14.05
27 Potatoes	0.4776	194.45	201.30	143.63	-	3.40	+	35.38
28 Onion	0.5417	201.79	225.89	174.91	-	10.67	+	15.37
29 Tomatoes	0.4496	108.68	167.79	181.44	-	35.23	-	40.10
30 Fresh Vegetables	1.6571	191.66	198.94	156.35	-	3.66	+	22.58
31 Sugar	1.0445	184.62	188.01	188.87	-	1.80	-	2.25
32 Gur	0.0220	240.68	243.92	220.47	-	1.33	+	9.17
33 Honey	0.0446	276.11	274.70	256.16	+	0.51	+	7.79
34 SweetMeat	0.2483	224.53	223.94	207.84	+	0.26	+	8.03
35 Beverages	1.1990	188.24	188.24	169.72	+	0.00	+	10.91
36 Jam, Tomato Ketchup & Pickles	0.2454	191.94	190.94	180.84	+	0.52	+	6.14
37 Condiments	0.2656	232.66	228.82	214.80	+	1.68	+	8.31
38 Spices	0.5441	218.41	216.53	241.36	+	0.87	-	9.51
39 Tea	0.8377	235.26	238.69	223.16	-	1.44	+	5.42
<b>Alcoholic Beverages, Tobacco</b>	<b>1.4135</b>	<b>221.77</b>	<b>221.80</b>	<b>191.17</b>	-	<b>0.01</b>	+	<b>16.01</b>
40 Cigarettes	1.3906	222.30	222.30	191.31	+	0.00	+	16.20
41 Betel Leaves & Nuts	0.0229	189.48	191.06	182.57	-	0.83	+	3.78
<b>Clothing and footwear</b>	<b>7.5708</b>	<b>199.16</b>	<b>198.28</b>	<b>178.43</b>	+	<b>0.44</b>	+	<b>11.62</b>
42 Cotton Cloth	1.7286	185.04	183.92	163.61	+	0.61	+	13.10
43 Woolen Cloth	0.8759	221.76	220.65	200.18	+	0.50	+	10.78
44 Readymade Garments	0.9739	198.34	197.37	177.09	+	0.49	+	12.00
45 Woolen Readymade Garments	0.3964	218.53	217.21	193.46	+	0.61	+	12.96
46 Hosiery	0.5094	209.41	207.84	189.09	+	0.76	+	10.75
47 Dopatta	0.4412	216.55	215.58	196.66	+	0.45	+	10.11
48 Cleaning and Laundry	0.2110	221.48	219.82	198.61	+	0.76	+	11.52
49 Tailoring	0.8840	239.91	239.23	211.32	+	0.28	+	13.53
50 Footwear	1.5504	163.10	163.02	149.45	+	0.05	+	9.13

**Annexure A: Consumer Price Index Numbers by Commodity Groups & Commodities (2007-08=100)**

Item and Specification	Weight	Index Numbers			% Change in Feb 2014 over			
		Feb 14	Jan 14	Feb 13	Jan 2014	Feb 2013		
<b>Housing, water, Elec., Gas an</b>	<b>29.4149</b>	<b>166.96</b>	<b>166.93</b>	<b>152.79</b>	<b>+</b>	<b>0.02</b>	<b>+</b>	<b>9.27</b>
51 House Rent	21.8149	153.82	153.82	142.46	+	0.00	+	7.97
52 Construction Input Items	0.5623	226.50	226.10	204.56	+	0.18	+	10.73
53 Construction Wage Rates	0.3331	193.28	192.79	175.62	+	0.25	+	10.06
54 Water Supply	0.4971	149.57	149.57	134.90	+	0.00	+	10.87
55 Electricity	4.3985	227.44	227.44	196.37	+	0.00	+	15.82
56 Gas	1.5756	143.81	143.81	142.58	+	0.00	+	0.86
57 Kerosene Oil	0.0057	294.98	296.77	276.25	-	0.60	+	6.78
58 Firewood Whole	0.2277	266.95	265.82	246.28	+	0.43	+	8.39
<b>Furnishing and household equi</b>	<b>4.2082</b>	<b>197.91</b>	<b>196.74</b>	<b>181.91</b>	<b>+</b>	<b>0.59</b>	<b>+</b>	<b>8.80</b>
59 Furniture	0.3315	189.87	188.50	171.54	+	0.73	+	10.69
60 Household Textiles	0.6489	196.78	195.40	177.68	+	0.71	+	10.75
61 Household Equipment	0.5936	166.76	166.28	158.68	+	0.29	+	5.09
62 Utensils	0.3212	199.46	198.04	179.02	+	0.72	+	11.42
63 Plastic Products	0.2547	191.61	191.12	177.32	+	0.26	+	8.06
64 Washing Soaps & Detergents	0.7893	215.60	214.27	197.96	+	0.62	+	8.91
65 Sewing Needle & Dr Cell	0.1496	176.33	175.61	152.30	+	0.41	+	15.78
66 Household Servant	1.0432	208.60	207.39	194.31	+	0.58	+	7.35
67 Marriage Hall Charges	0.0762	212.59	208.57	193.63	+	1.93	+	9.79
<b>Health</b>	<b>2.1868</b>	<b>167.50</b>	<b>166.84</b>	<b>158.02</b>	<b>+</b>	<b>0.40</b>	<b>+</b>	<b>6.00</b>
68 Drugs & Medicines	1.2667	142.28	142.28	139.74	+	0.00	+	1.82
69 Medical Equipments	0.0080	210.38	209.84	201.48	+	0.26	+	4.42
70 Doctor (MBBS) Clinic Fee	0.5904	221.33	219.23	196.28	+	0.96	+	12.76
71 Medical Tests	0.3217	166.95	166.32	158.67	+	0.38	+	5.22
<b>Transport</b>	<b>7.2023</b>	<b>197.33</b>	<b>197.19</b>	<b>188.35</b>	<b>+</b>	<b>0.07</b>	<b>+</b>	<b>4.77</b>
72 Motor Vehicles	0.6630	162.60	162.19	154.73	+	0.25	+	5.09
73 Motor Vehicle Accessories	0.2439	223.06	222.42	212.30	+	0.29	+	5.07
74 Motor Fuel	3.0269	193.53	193.91	183.71	-	0.20	+	5.35
75 Mechanical Service	0.4552	201.06	200.52	185.37	+	0.27	+	8.46
76 Motor Vehicle Tax	0.1099	153.74	153.74	153.74	+	0.00	+	0.00
77 Transport Services	2.7034	208.93	208.36	201.53	+	0.27	+	3.67
<b>Communication</b>	<b>3.2198</b>	<b>129.82</b>	<b>129.79</b>	<b>128.63</b>	<b>+</b>	<b>0.02</b>	<b>+</b>	<b>0.93</b>
78 Postal Services	0.0662	215.89	215.89	174.59	+	0.00	+	23.66
79 Communication & Apparatus	3.1536	128.01	127.98	127.66	+	0.02	+	0.27
<b>Recreation and culture</b>	<b>2.0227</b>	<b>183.42</b>	<b>183.34</b>	<b>167.30</b>	<b>+</b>	<b>0.04</b>	<b>+</b>	<b>9.64</b>
80 Recreation & Culture	0.8634	126.96	126.94	122.45	+	0.02	+	3.68
81 Text Books	0.5706	267.10	267.10	231.05	+	0.00	+	15.60
82 Newspapers	0.1934	172.95	172.95	157.59	+	0.00	+	9.75
83 Stationery	0.3953	191.07	190.71	178.01	+	0.19	+	7.34
<b>Education</b>	<b>3.9431</b>	<b>168.48</b>	<b>168.48</b>	<b>155.83</b>	<b>+</b>	<b>0.00</b>	<b>+</b>	<b>8.12</b>
84 Education	3.9431	168.48	168.48	155.83	+	0.00	+	8.12
<b>Restaurants and hotels</b>	<b>1.2286</b>	<b>233.32</b>	<b>231.11</b>	<b>207.28</b>	<b>+</b>	<b>0.96</b>	<b>+</b>	<b>12.56</b>
85 Readymade Food	1.2286	233.32	231.11	207.28	+	0.96	+	12.56
<b>Misc. goods and services</b>	<b>2.7550</b>	<b>212.47</b>	<b>211.24</b>	<b>202.74</b>	<b>+</b>	<b>0.58</b>	<b>+</b>	<b>4.80</b>
86 Personal Care	1.4935	195.35	193.97	181.67	+	0.71	+	7.53
87 Cosmetics	0.3853	178.00	176.55	149.40	+	0.82	+	19.14
88 Blades	0.0322	182.25	182.08	174.21	+	0.09	+	4.62
89 Personal Equipments	0.8440	259.66	258.77	265.47	+	0.34	-	2.19

## Annexure B: Wholesale Price Indices by Major Groups &amp; Commodities

(2007-08=100)

Item and Specification	Weight	Index Numbers			% Change in Feb 2014 over		
		Feb 14	Jan 14	Feb 13	Jan 2014	Feb 2013	
<b>General</b>	<b>100.0000</b>	<b>210.94</b>	<b>211.23</b>	<b>196.06</b>	-	<b>0.14</b>	<b>+ 7.59</b>
<b>Agriculture Forestry &amp; Fisher</b>	<b>25.7674</b>	<b>214.62</b>	<b>216.41</b>	<b>198.37</b>	-	<b>0.83</b>	<b>+ 8.19</b>
001 Wheat	0.6297	246.93	243.48	207.60	+	1.42	+ 18.95
002 Maize	0.6764	178.62	176.18	178.29	+	1.38	+ 0.19
003 Rice	2.4413	177.64	177.05	165.57	+	0.33	+ 7.29
004 Sorghum / Jowar	0.0214	277.39	276.14	209.43	+	0.45	+ 32.45
005 Millet / Bajra	0.0374	171.25	174.47	170.25	-	1.85	+ 0.59
006 Vegetables	1.2441	183.62	215.08	165.61	-	14.63	+ 10.87
007 Fresh Fruits	1.5144	195.94	187.74	210.65	+	4.37	- 6.98
008 Dry Fruits	0.2478	205.28	203.14	185.34	+	1.05	+ 10.76
009 Cotton Seeds	1.1511	191.11	188.10	166.82	+	1.60	+ 14.56
010 Other Oil Seeds	0.0722	183.54	184.14	178.37	-	0.33	+ 2.90
011 Edible Roots / Potatoes	0.2540	227.80	217.35	138.83	+	4.81	+ <u>64.09</u>
012 Stimulant & Spice Crops	0.1634	343.03	329.72	188.76	+	4.04	+ <u>81.73</u>
013 Pulses	0.4901	189.21	187.07	204.49	+	1.14	- 7.47
014 Sugar Crops	1.0725	267.92	267.92	267.92	+	0.00	+ 0.00
015 Fibre Crops	5.3169	224.80	226.32	199.23	-	0.67	+ 12.83
016 Unmanufactured Tobacco	0.0742	189.53	188.70	174.04	+	0.44	+ 8.90
017 Poultry	0.5633	193.61	238.28	188.11	-	18.75	+ 2.92
018 Raw Milk from Bovine Animals	7.0279	224.56	224.04	220.40	+	0.23	+ 1.89
019 Eggs	0.5034	207.17	218.04	168.53	-	4.99	+ 22.93
020 Raw Animal Materials / Wool	0.0351	158.40	156.85	137.58	+	0.99	+ 15.13
021 Hides & Fur Skins, Raw	0.4834	146.68	147.80	139.48	-	0.76	+ 5.16
022 Fuel Wood in Logs	0.0179	241.73	239.54	219.44	+	0.91	+ 10.16
023 Fish Live Fresh or Chilled	1.7295	244.62	243.95	189.26	+	0.27	+ 29.25
<b>Ores/Minerals, Elec., Gas &amp; W</b>	<b>12.0389</b>	<b>243.36</b>	<b>243.68</b>	<b>215.52</b>	-	<b>0.13</b>	<b>+ 12.92</b>
024 Coal not Agglomerated	0.7508	223.53	223.53	223.53	+	0.00	+ 0.00
025 Natural Gas Liquified	5.7385	203.90	204.61	204.82	-	0.35	- 0.45
026 Salt & Pure Sodium Chloride	0.0584	231.42	228.23	170.30	+	1.40	+ 35.89
027 Electrical Energy	5.4912	287.44	287.44	226.10	+	0.00	+ 27.13
<b>Food, Beverages, Tobacco, Textil</b>	<b>31.1122</b>	<b>201.73</b>	<b>201.47</b>	<b>190.68</b>	+	<b>0.13</b>	<b>+ 5.80</b>
<b>Food Products, Beverages &amp;</b>	<b>20.0718</b>	<b>202.61</b>	<b>202.88</b>	<b>193.05</b>	-	<b>0.13</b>	<b>+ 4.95</b>
028 Meat of Animals	3.4559	240.41	239.95	229.40	+	0.19	+ 4.80
029 Vegetables & Fruit Juice	0.0058	193.91	193.91	189.33	+	0.00	+ 2.42
030 Dried Fruits & Nuts	0.1733	218.89	222.32	224.68	-	1.54	- 2.58
031 Fruit Juices	0.3880	166.02	166.02	158.79	+	0.00	+ 4.55
032 Vegetable Oils Refined	1.9242	161.68	161.86	160.11	-	0.11	+ 0.98
033 Vegetable Ghee	1.5632	140.94	142.28	141.86	-	0.94	- 0.65
034 Oil Cakes	0.9611	193.86	191.76	163.45	+	1.10	+ 18.61
035 Processed Liquid Milk	4.4437	210.94	210.94	208.43	+	0.00	+ 1.20
036 Milk & Cream in Solid Form	0.0316	207.03	202.00	171.59	+	2.49	+ 20.65
037 Ice Cream	0.0047	209.79	209.79	173.49	+	0.00	+ 20.92
038 Dairy Products N.E.C	0.0117	218.81	218.81	206.31	+	0.00	+ 6.06
039 Wheat Flour	2.3034	214.84	214.41	186.10	+	0.20	+ 15.44
040 Other Cereal Flour	0.0604	141.77	133.04	198.50	+	6.56	- 28.58
041 Sugar Refined	1.7975	192.80	196.44	194.64	-	1.85	- 0.95
042 Chocolate	0.0139	99.19	99.19	99.19	+	0.00	+ 0.00
043 Sugar Confectionary	0.0738	102.28	102.28	102.28	+	0.00	+ 0.00
044 Coffee & Tea	0.7303	213.04	214.63	201.59	-	0.74	+ 5.68
045 Spices	0.1449	191.33	190.97	273.41	+	0.19	- 30.02
046 Other Food Products	0.0336	308.48	308.48	318.46	+	0.00	- 3.13
047 Mineral Water	0.0207	181.84	181.84	168.32	+	0.00	+ 8.03
048 Beverages	0.6303	152.12	152.12	137.86	+	0.00	+ 10.34
049 Tobacco Products	1.2998	242.41	242.41	208.80	+	0.00	+ 16.10
<b>Textiles &amp; Apparels</b>	<b>10.3289</b>	<b>197.85</b>	<b>197.40</b>	<b>190.87</b>	+	<b>0.23</b>	<b>+ 3.66</b>
050 Cotton Yarn	5.2491	218.02	217.06	216.35	+	0.44	+ 0.77
051 Nylon Yarn	0.1719	179.07	180.95	183.22	-	1.04	- 2.27
052 Blended Yarn	0.1689	201.29	201.89	199.23	-	0.30	+ 1.03
053 Woven Fabrics	0.0128	226.82	226.82	206.00	+	0.00	+ 10.11
054 Cotton Fabrics	0.6343	187.77	187.77	174.17	+	0.00	+ 7.81
055 Other Fabrics	1.1016	179.06	179.06	165.62	+	0.00	+ 8.11
056 Silk & Reyon Fabrics	0.7350	161.09	161.09	154.21	+	0.00	+ 4.46

## Annexure B: Wholesale Price Indices by Major Groups &amp; Commodities

(2007-08=100)

Item and Specification	Weight	Index Numbers			% Change in Feb 2014 over			
		Feb 14	Jan 14	Feb 13	Jan 2014	Feb 2013		
057 Towels	0.1235	234.25	234.25	203.06	+	0.00	+	15.36
058 Blankets	0.0029	219.66	219.66	185.21	+	0.00	+	18.60
059 Bed Sheets	0.0913	236.05	236.05	207.04	+	0.00	+	14.01
060 Quilts	0.0019	172.42	172.42	153.32	+	0.00	+	12.46
061 Woolen Carpets	0.0383	113.69	113.69	106.55	+	0.00	+	6.70
062 Synthetic Carpets	0.0566	116.10	116.10	114.41	+	0.00	+	1.48
063 Hosiery Products	0.8832	195.18	195.18	181.47	+	0.00	+	7.55
064 Readymade Garments	1.0576	153.12	153.12	138.19	+	0.00	+	10.80
<b>Leather Products</b>	<b>0.7115</b>	<b>233.33</b>	<b>220.57</b>	<b>120.99</b>	+	<b>5.79</b>	+	<b>92.85</b>
065 Leather Without Hair	0.2973	167.71	161.61	109.83	+	3.77	+	52.70
066 Other Leather N.E.C	0.2567	370.13	341.85	122.57	+	8.27	+	201.97
067 Footwears	0.1575	134.22	134.22	139.49	+	0.00	-	3.78
<b>Other Transportable Goods</b>	<b>22.3659</b>	<b>218.22</b>	<b>217.85</b>	<b>204.80</b>	+	<b>0.17</b>	+	<b>6.55</b>
068 Timber	0.0165	174.55	174.55	148.59	+	0.00	+	17.47
069 Printing Paper	0.4279	169.75	169.75	161.68	+	0.00	+	4.99
070 Hard Board	0.1579	229.17	229.17	193.06	+	0.00	+	18.70
071 Coke	0.2797	163.45	163.45	163.45	+	0.00	+	0.00
072 Motor Spirit	1.5336	190.50	190.50	172.73	+	0.00	+	10.29
073 Diesel Oil	5.2664	279.46	279.46	261.36	+	0.00	+	6.93
074 Kerosine Oil	0.2151	288.01	288.01	264.94	+	0.00	+	8.71
075 Furnace Oil	3.2664	182.18	183.45	168.81	-	0.69	+	7.92
076 Mobil Oil	0.7114	193.09	193.09	184.85	+	0.00	+	4.46
077 Chemicals	1.7720	171.72	171.72	157.85	+	0.00	+	8.79
078 Dyeing Material	0.1539	107.55	107.55	106.24	+	0.00	+	1.23
079 Fertilizers	2.8657	267.25	264.18	263.38	+	1.16	+	1.47
080 Pesticides	0.2763	225.62	225.48	197.49	+	0.06	+	14.24
081 Insecticides	0.1276	136.69	133.78	120.46	+	2.18	+	13.47
082 Paints & Varnishes	0.1916	268.31	267.31	238.30	+	0.37	+	12.59
083 Medicines	1.1428	139.69	139.69	139.32	+	0.00	+	0.27
084 Soaps & Detergents	0.8168	181.22	181.22	168.27	+	0.00	+	7.70
085 Auto Tyres	0.2703	185.73	185.73	180.99	+	0.00	+	2.62
086 Plastic Products	0.4550	202.33	202.31	192.40	+	0.01	+	5.16
087 Glass sheets	0.2089	207.75	207.75	192.74	+	0.00	+	7.79
088 Other Glass Articles	0.1635	214.09	214.09	197.87	+	0.00	+	8.20
089 Ceramics & Sanitary Fixture	0.0244	192.64	192.64	160.55	+	0.00	+	19.99
090 Bricks, Blocks & Tiles	0.1566	195.96	197.12	177.53	-	0.59	+	10.38
091 Cement	1.8145	207.30	205.56	187.79	+	0.85	+	10.39
092 Bed Foam	0.0006	149.67	149.67	142.83	+	0.00	+	4.79
093 Matches	0.0505	143.20	143.20	133.50	+	0.00	+	7.27
<b>Metal Product, Machinery &amp; Eq</b>	<b>8.7156</b>	<b>169.45</b>	<b>168.90</b>	<b>159.08</b>	+	<b>0.33</b>	+	<b>6.52</b>
094 Pig Iron	0.0593	128.97	128.97	128.97	+	0.00	+	0.00
095 Steel Bar & Sheets	1.4022	139.12	140.23	132.81	-	0.79	+	4.75
096 Pipe Fittings	0.0780	168.33	168.33	141.47	+	0.00	+	18.99
097 Steel Products	0.3879	170.19	170.19	161.94	+	0.00	+	5.09
098 Engines & Motors	0.0046	109.07	109.07	109.07	+	0.00	+	0.00
099 Vacuum Pumps	0.0155	115.39	115.39	115.39	+	0.00	+	0.00
100 Air Conditioners	0.0049	181.12	181.12	172.67	+	0.00	+	4.89
101 Cultivators	0.0551	226.90	226.90	189.23	+	0.00	+	19.91
102 Chuff Cutter	0.1293	144.94	144.94	138.54	+	0.00	+	4.62
103 Tractors	0.0028	193.29	193.29	161.96	+	0.00	+	19.34
104 Lathe Machines	0.0525	208.81	208.81	147.68	+	0.00	+	41.39
105 Concrete Mixture	0.0107	138.83	138.83	138.83	+	0.00	+	0.00
106 Fridge, WashM, SewM, Fans, Iron	1.1645	192.33	192.24	166.47	+	0.05	+	15.53
107 Electric Wires	0.0912	178.73	178.73	159.57	+	0.00	+	12.01
108 Lighting Equipments	1.4431	162.86	162.86	148.26	+	0.00	+	9.85
109 Radio & Television	0.1843	126.49	126.49	126.46	+	0.00	+	0.02
110 Motor Vehicles	0.0244	182.16	182.16	173.75	+	0.00	+	4.84
111 Motorcycles	0.2570	125.69	125.58	125.07	+	0.09	+	0.50
112 Bicycles	3.3483	182.84	180.99	177.87	+	1.02	+	2.79