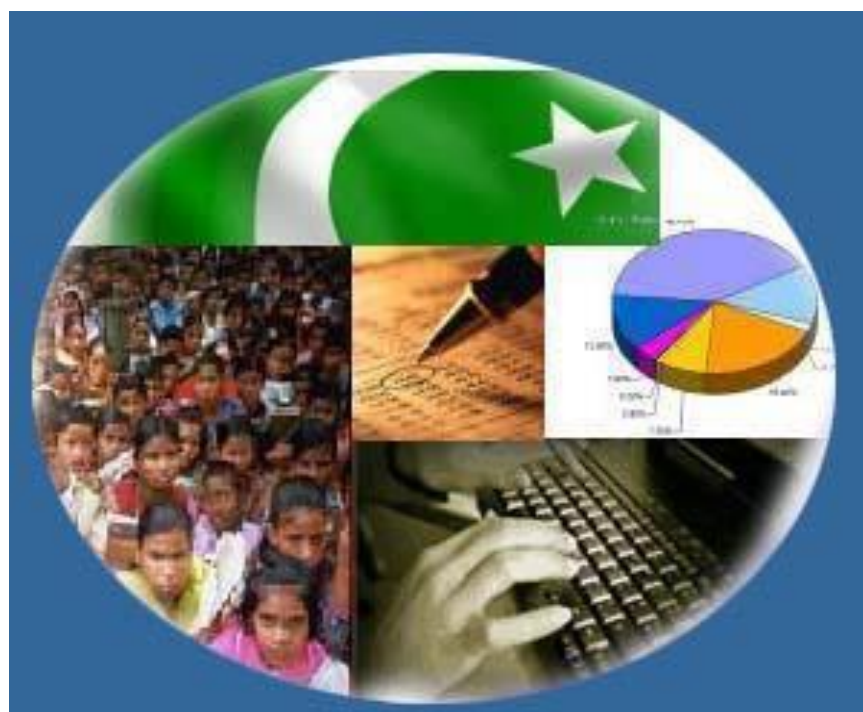




Monthly Review on Price Indices



June, 2013
(Base 2007-08)

Government of Pakistan
Statistics Division
Pakistan Bureau of Statistics
Islamabad

I. Inflation in Brief

1. CPI inflation, General, increased by 5.9% on year-on-year basis in June 2013 as compared to 5.1% in the previous month and 11.3% in June 2012. On month-on-month basis, it increased by 0.7% in June 2013 as compared to 0.5% in the previous month and an increase of 0.04% in June 2012.
2. Core inflation measured by non-food non-energy CPI (Core NFNE) increased by 7.8% in June 2013 as compared to 8.1% in May 2013 (YoY) and by 11.4% in June 2012. Core NFNE inflation on MoM basis increased by 0.4% in June 2013 as compared to 0.3% a month earlier and 0.7% in June 2012.
3. Core inflation, measured by 20% weighted trimmed mean CPI (Core Trimmed) increased by 6.8% in June 2013 and by 6.7% in May 2013 (YoY) which increased by 11.1% in June 2012. Core Trimmed inflation has increased by 0.6% on MoM basis in June 2013 as compared to 0.3% in May 2013 which increased by 0.5% in June 2012.
4. SPI inflation on YoY basis increased by 7.9% in June 2013 as compared with 6.8% a month earlier and 9.7% in June 2012. On MoM basis, it increased by 2.5% in June 2013 as compared to an increase of 0.1% a month earlier and 1.4% in June 2012.
5. WPI inflation on YoY basis increased to 5.2% in June 2013 compared with 4.1% a month earlier and 6.4% in June 2012. WPI inflation on MoM basis decreased by 1.0% in June 2013 as compared to a decrease of 0.4% a month earlier and decreased by 0.05% in June 2012.
6. Figures 1 and 2 show graphically the data of Table 1. Table 1.1 shows "Period Average" and "YoY" percent changes in indices of three years.

Table 1: Inflation (%) (Base 2007-08)

Period	CPI						Core Inflation				SPI**		WPI	
	General		Food		Non-food		NFNE*		Trimmed		YoY	MoM	YoY	MoM
	YoY	MoM	YoY	MoM	YoY	MoM	YoY	MoM	YoY	MoM				
May 12	12.3	1.1	11.3	0.2	13.1	1.9	11.1	0.8	11.7	0.5	8.1	-0.1	7.1	2.1
Jun 12	11.3	0.0 ¹	10.3	-0.2	12.0	0.2	11.4	0.7	11.1	0.5	9.7	1.4	6.4	0.0 ²
Jul 12	9.6	-0.2	9.1	1.8	10.0	-1.7	11.3	1.0	10.7	0.7	7.7	0.5	7.2	0.4
Aug 12	9.1	0.9	8.5	0.9	9.4	0.9	10.8	0.3	10.6	0.4	8.2	1.3	7.7	1.0
Sep 12	8.8	0.8	7.6	0.7	9.7	0.9	10.4	0.4	10.4	0.5	8.0	1.2	7.8	0.3
Oct 12	7.7	0.4	5.8	-0.1	9.1	0.7	10.1	1.2	9.7	0.7	6.7	-0.4	7.5	0.1
Nov 12	6.9	-0.4	5.3	-0.3	8.1	-0.4	9.7	0.2	8.8	0.2	6.0	0.0	7.7	-0.4
Dec 12	7.9	0.2	7.7	0.0	8.1	0.4	9.8	0.5	9.2	0.3	8.2	0.0	9.6	0.4
Jan 13	8.1	1.7	8.1	1.9	8.1	1.5	9.9	1.2	9.9	1.0	9.2	1.9	8.6	1.2
Feb 13	7.4	-0.3	7.4	-1.3	7.4	0.3	9.6	0.4	9.2	0.2	9.4	0.1	8.3	0.3
Mar 13	6.6	0.4	6.3	0.5	6.7	0.3	9.0	0.4	8.4	0.2	8.7	0.8	7.9	0.3
Apr 13	5.8	1.1	5.5	1.4	6.0	0.9	8.7	1.1	7.6	0.7	6.6	-0.3	6.8	0.8
May 13	5.1	0.5	6.5	1.1	4.1	0.1	8.1	0.3	6.7	0.3	6.8	0.1	4.1	-0.4
Jun 13	5.9	0.7	7.9	1.1	4.4	0.5	7.8	0.4	6.8	0.6	7.9	2.5	5.2	1.0

*NFNE is non-food non-energy,

** SPI for quintile 1

¹ Actual figure is 0.04, displayed in rounded figure

² Actual figure is -0.05, displayed in rounded figure

Table 1.1 : Period Average and YoY % Changes of Indices (Base 2007-08)

Index	Averages July-June % Changes			June over June % Changes		
	2012-13	2011-12	2010-11	2012-13	2011-12	2010-11
CPI	7.36	11.01	13.66	5.85	11.26	13.31
SPI	7.77	7.08	16.57	7.91	9.67	13.01
WPI	7.35	10.42	21.25	5.20	6.40	22.77

Figure 1: CPI Inflation YoY, Special Indices

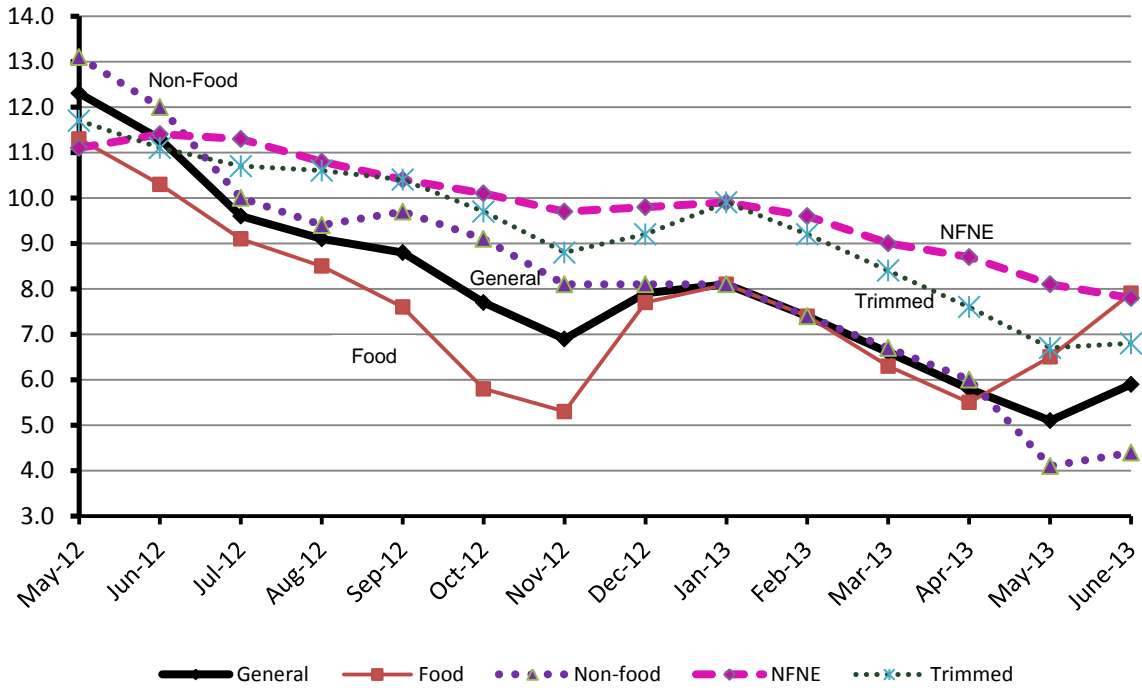
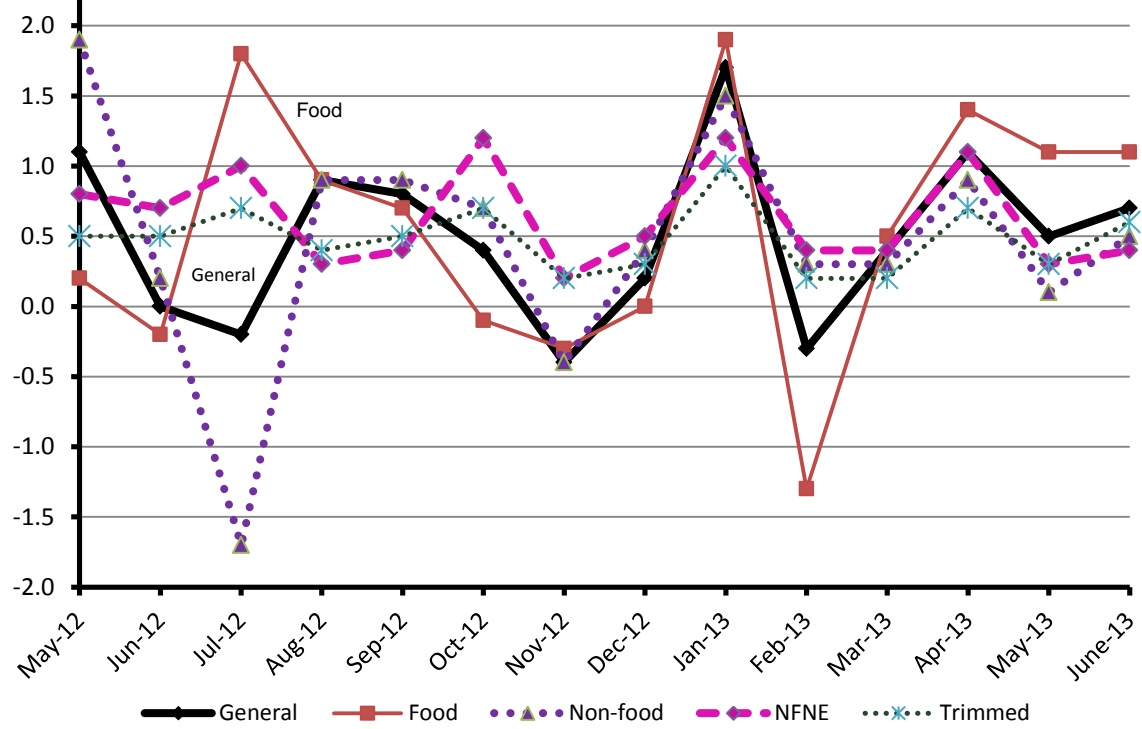


Figure 2: CPI Inflation MoM, Special Indices



II. Consumer Price Index (CPI)

The Consumer Price Index of June, 2013 has increased by 0.72% over May 2013 and increased by 5.85% over corresponding month of last year.

Table 2 : Consumer Price Index by Group of Commodities and Services (Base 2007-08)

No	Group	Group Weight (%)	Indices			% Change June 2013 over		Impact (In % points) June 2013 over	
			June 2013	May 2013	June 2012	May 2013	June 2012	May 2013	June 2012
	General	100.00	179.94	178.65	169.99	0.72	5.85	0.72	5.85
1.	Food & Non-alcoholic Bev.	34.83	202.11	200.01	187.05	1.05	8.05	0.41	3.09
	<i>Non-perishable Food Items</i>	<i>29.84</i>	<i>201.88</i>	<i>197.71</i>	<i>188.76</i>	<i>2.11</i>	<i>6.95</i>	<i>0.70</i>	<i>2.30</i>
	<i>Perishable Food Items</i>	<i>4.99</i>	<i>203.50</i>	<i>213.76</i>	<i>176.84</i>	<i>-4.80</i>	<i>15.08</i>	<i>-0.29</i>	<i>0.78</i>
2.	Alcoholic Bev.& Tobacco	1.41	194.66	191.19	188.05	1.81	3.52	0.03	0.05
3.	Clothing & Footwear	7.57	186.46	183.74	164.08	1.48	13.64	0.12	1.00
4.	Housing, Water, Electricity, Gas & Fuels	29.41	154.65	154.54	153.35	0.07	0.85	0.02	0.23
5.	Furnishing & Household Equipment Maintenance	4.21	185.82	184.71	173.20	0.60	7.29	0.03	0.31
6.	Health	2.19	160.93	160.24	147.42	0.43	9.16	0.01	0.17
7.	Transport	7.20	187.25	185.52	182.98	0.93	2.33	0.07	0.18
8.	Communication	3.22	128.73	128.71	123.62	0.02	4.13	0.00	0.10
9.	Recreation & Culture	2.03	177.84	176.58	164.37	0.71	8.19	0.01	0.16
10.	Education	3.94	163.54	162.17	152.28	0.84	7.39	0.03	0.26
11.	Restaurants & Hotels	1.23	210.64	209.95	195.10	0.33	7.97	0.00	0.11
12.	Miscellaneous	2.76	202.39	202.61	190.51	-0.11	6.24	0.00	0.19

Main contributors to month-on-month and year-on-year percentage changes are given below and detail is given in Annexure A.

1. **Month-on-month** Top few commodities which varied from previous month i.e. May 2013 are given below:-

Food Items Increased: Tomatoes (23.19%), Chicken (23.16%), Potatoes (19.16%), Gur (8.42%), Beverages (3.58%), Wheat (2.63%), Wheat Flour (2.59%), Wheat Product (2.30%), Pulse Moong (2.27%), Beans (2.02%), Cigarettes (1.82%), Pulse Masoor (1.69%), Sugar (1.56%), Milk Fresh (1.54%) and Betel Leaves & Nuts (1.52%).

Decreased: Onions (14.18%), Fresh Fruits (10.10%), Fresh Vegetables (4.21%), Eggs (2.62%), Besan (1.99%), Pulse Gram (1.27%), Spices (0.30%) and Gram Whole (0.02%).

Non-food Items Increased: Cosmetics (6.96%), Footwear (6.16%), Motor Fuel (2.16%), Sewing Needle & Dry Cell (1.76%), Construction Wage Rates (1.30%), Text Books (1.23%), Washing Soap (1.20%), Marriage Hall charges and Doctor (MBBS) Clinic Fee (1.12% each), Blades (0.91%) and Cotton Cloth (0.87%).

Decreased: Personal Equipments (2.28%).

2. **Year-on-year:** Top few commodities which varied from previous year i.e. June 2012 are given below:-

Food Items Increased: Tomatoes (125.1%), Onions (87.82%), Fresh Vegetables (29.28%), Wheat Flour (19.99%), Wheat (18.58%), Tea (16.92%), Wheat Products (16.17%), Chicken (15.59%), Gur (14.07%), Rice (12.21%), Cereals (11.88%), Honey (10.45%), Beans (9.69%), Beverages (9.22%), Dry Fruits (9.18%) and Milk Powder (8.43%).

Decreased: Pulse Gram (21.40%), Spices (18.28%), Gram Whole (15.61%), Besan (13.93%), Fresh Fruits (11.26%), Vegetable Ghee (5.47%), Pulse Mash (4.86%), Pulse Moong (3.41%), Sugar (2.08%) and Potatoes (0.16%).

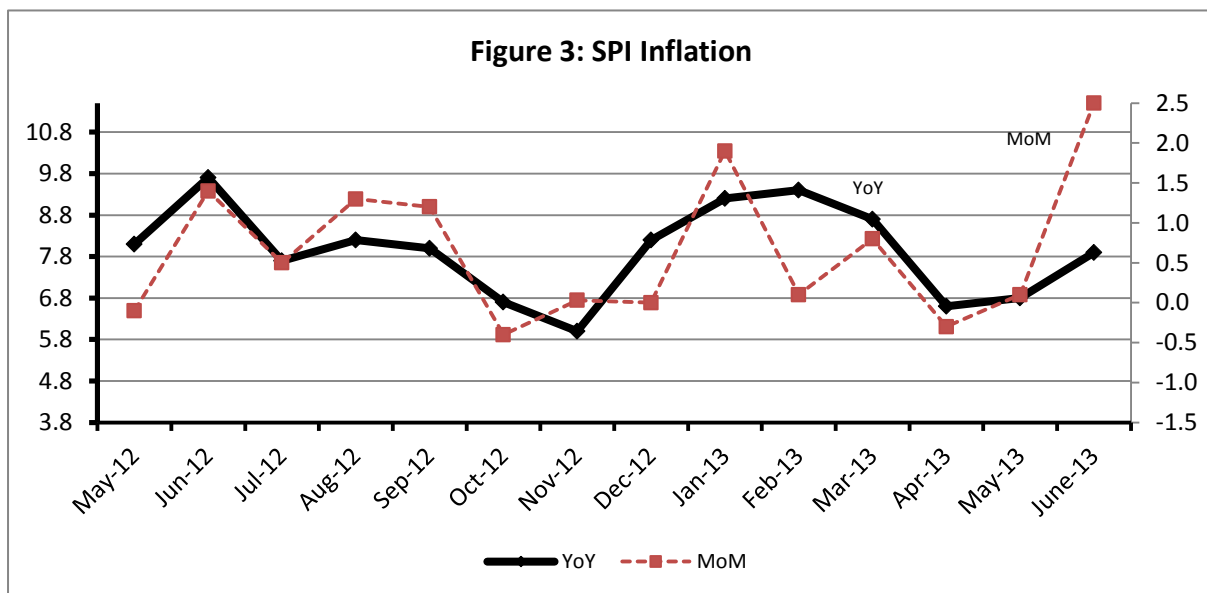
Non-food Items Increased: Woolen Readymade Garments (18.47%), Dopatta (16.60%), Cotton Cloth (14.91%), Cleaning & Laundry (14.55%), Newspaper (13.68%), Woolen Cloth (13.41%), Tailoring (13.06%) and Text Books (12.95%).

Decreased: Gas (45.61%) and Motor Fuel (0.61%).

III. Sensitive Price Indicator

Quintile-wise percentage changes YoY and MoM are given below in Table 3. The series from May 2012 to June 2013 is also graphed below in Figure 3.

Table 3 : Sensitive Price Indicator (Base 2007-08)					
Quintiles	Indices			% Change June 2013 over	
	June 2013	May 2013	June 2012	May 2013	June 2012
1	191.15	186.57	177.14	2.45	7.91
2	197.59	192.84	183.99	2.46	7.39
3	196.33	191.49	182.69	2.53	7.47
4	197.73	192.79	190.50	2.56	3.80
5	197.73	192.96	195.71	2.47	1.03
Combined	196.75	191.96	188.14	2.50	4.58



IV. Wholesale Price Index

The Wholesale Price Index for June 2013 increased by 1.00% over June 2012. It increased by 5.20% over the corresponding month of the last year. YoY and MoM movements, from May 2012 to June 2013 are also graphed below in Figure 4.

Table 4 : Wholesale Price Index by Group of Commodities (Base 2007-08)

No.	Group	Group Weight (%)	Indices			% Change Jun 2013 over		Impact (in %age points) Jun 2013 over	
			Jun 2013	May 2013	Jun 2012	May 2013	Jun 2012	May 2013	Jun 2012
	General	100.00	199.21	197.23	189.37	1.00	5.20	1.00	5.20
1.	Agriculture, Forestry & Fishery Products	25.77	209.16	204.69	189.25	2.18	10.52	0.58	2.71
2.	Ores & Minerals, Electricity, Gas & Water	12.04	214.86	213.53	215.23	0.62	-0.17	0.08	-0.02
3.	Food Products, Beverages & Tobacco, Textiles, Apparel & Leather Products	31.11	192.87	191.52	180.94	0.70	6.59	0.21	1.96
	i. Food Products, Bev. & Tobacco	20.07	195.63	194.18	186.43	0.75	4.93	0.15	0.97
	ii. Textiles and Apparel	10.33	190.61	190.09	174.56	0.27	9.19	0.03	0.88
	iii. Leather Products	0.71	147.99	137.06	118.56	7.97	24.82	0.04	0.11
4.	Other Transportable Goods except Metal Products, Machinery & Equipments	22.37	202.56	201.98	199.83	0.29	1.37	0.07	0.32
5.	Metal Products, Machinery & Equipments	8.72	162.20	160.87	157.22	0.83	3.17	0.06	0.23

Main contributors to month-on-month and year-on-year percentage changes are given below and detail is given in Annexure B.

1. **Month-on-month** Top few commodities which varied from previous month i.e. May 2013 are given below:-

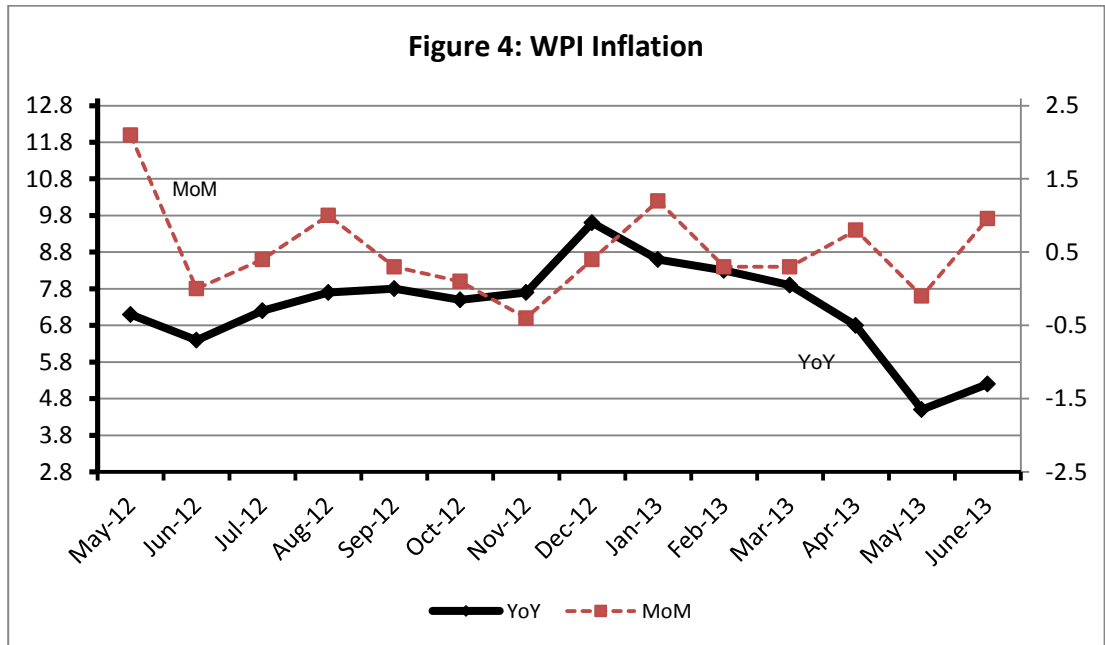
Increased: Poultry (27.34%), other leather N.E.C (11.91%), Fish (11.89%), Edible Roots/ Potatoes (10.15%), Leather without hair (8.35%), Ice cream (8.11%), Stimulants & Spice Crops (7.43%), Fresh Fruits (7.25%), Hard Board (6.67%) and Jowar (6.47%).

Decreased: Vegetables (8.84%), Spices (4.42%), Other cereal Flour (3.81%), Printing paper (2.74%), Cotton Seeds (1.70%), Other oil seeds (0.71%), Medicines (0.34%), Diesel Oil (0.32%), Pulses (0.24%) and Processed Liquid Milk (0.13%).

2. **Year-on-year** Top few commodities which varied from previous year i.e. June, 2012 are given below:-

Increased: Vegetables (61.75%), Fish (53.63%), Other Leather N.E.C (46.46%), stimulant and Spice Crops (27.09%), Jowar (25.90%), Oil Cakes (22.47%), Pesticides (21.95%), Woven Fabrics (21.82%), Wheat Flour (21.36%) and Wheat (21.35).

Decreased: Spices (24.85%), other Cereal Flour (23.75%), Synthetic Carpets (18.18%), Pulses (16.69%), Fresh Fruits (16.00%), Furnace Oil (12.74%), Cotton Seeds (7.00%), Edible Roots/Potatoes (6.43%), Tractors (6.03%) and other Glass Articles (5.45%)



Annexure A: Consumer Price Index Numbers by Commodity Groups & Commodities (2007-2008=100)

Item and Specification	Weight	Index Numbers			% Change in Jun 2013 over			
		Jun 13	May 13	Jun 12	May 2013	Jun 2012		
General	100.0000	179.94	178.65	169.99	+	0.72	+	5.85
Food & Non-alcoholic Beverage	34.8343	202.11	200.01	187.05	+	1.05	+	8.05
01 Wheat	0.3477	188.23	183.40	158.74	+	2.63	+	18.58
02 Wheat Flour	4.1648	199.73	194.69	166.45	+	2.59	+	19.99
03 Wheat Product	0.0959	189.19	184.94	162.86	+	2.30	+	16.17
04 Besan	0.1500	199.32	203.36	231.58	-	1.99	-	13.93
05 Rice	1.5821	186.75	184.12	166.43	+	1.43	+	12.21
06 Cereals	0.1563	216.83	214.75	193.80	+	0.97	+	11.88
07 Bakery & Confectionary	1.1550	183.07	182.58	169.62	+	0.27	+	7.93
08 Nimco	0.4574	206.43	203.68	190.60	+	1.35	+	8.31
09 Meat	2.4303	223.43	222.80	214.75	+	0.28	+	4.04
10 Chicken	1.3596	211.41	171.66	182.90	+	23.16	+	15.59
11 Fish	0.2970	200.15	199.39	187.13	+	0.38	+	6.96
12 Milk Fresh	6.6800	225.78	222.36	209.46	+	1.54	+	7.79
13 Milk Products	0.6338	216.57	213.82	204.19	+	1.29	+	6.06
14 Milk Powder	0.1129	190.81	189.99	175.97	+	0.43	+	8.43
15 Eggs	0.4555	153.31	157.44	149.61	-	2.62	+	2.47
16 Mustard Oil	0.0952	158.43	158.01	158.54	+	0.27	-	0.07
17 Cooking Oil	1.7538	162.54	162.20	157.85	+	0.21	+	2.97
18 Vegetable Ghee	2.0714	155.94	155.64	164.96	+	0.19	-	5.47
19 Dry Fruits	0.2543	214.95	213.78	196.87	+	0.55	+	9.18
20 Fresh Fruits	1.8649	206.05	229.20	232.20	-	10.10	-	11.26
21 Pulse Masoor	0.2712	154.35	151.79	145.26	+	1.69	+	6.26
22 Pulse Moong	0.2336	224.06	219.09	231.97	+	2.27	-	3.41
23 Pulse Mash (Washed)	0.2098	187.81	186.56	197.41	+	0.67	-	4.86
24 Pulse Gram	0.2361	189.40	191.83	240.97	-	1.27	-	21.40
25 Gram Whole	0.1616	194.98	195.02	231.05	-	0.02	-	15.61
26 Beans	0.0269	221.84	217.45	202.24	+	2.02	+	9.69
27 Potatoes	0.4699	169.11	141.92	169.38	+	19.16	-	0.16
28 Onion	0.5340	239.70	279.29	127.62	-	14.18	+	87.82
29 Tomatoes	0.4419	179.19	145.46	79.62	+	23.19	+	125.1
30 Fresh Vegetables	1.6802	205.17	214.19	158.70	-	4.21	+	29.28
31 Sugar	1.0445	194.50	191.51	198.64	+	1.56	-	2.08
32 Gur	0.0220	250.06	230.64	219.21	+	8.42	+	14.07
33 Honey	0.0446	256.65	256.65	232.36	+	0.00	+	10.45
34 SweetMeat	0.2483	210.79	208.64	200.28	+	1.03	+	5.25
35 Beverages	1.1990	184.25	177.89	168.70	+	3.58	+	9.22
36 Jam, Tomato Ketchup & Pickles	0.2454	185.63	184.90	172.20	+	0.39	+	7.80
37 Condiments	0.2656	216.64	216.21	209.67	+	0.20	+	3.32
38 Spices	0.5441	219.37	220.03	268.44	-	0.30	-	18.28
39 Tea	0.8377	248.27	245.66	212.34	+	1.06	+	16.92
Alcoholic Beverages, Tobacco	1.4135	194.66	191.19	188.05	+	1.81	+	3.52
40 Cigarettes	1.3906	194.79	191.31	188.26	+	1.82	+	3.47
41 Betel Leaves & Nuts	0.0229	186.64	183.85	175.17	+	1.52	+	6.55
Clothing & Footwear	7.5708	186.46	183.74	164.08	+	1.48	+	13.64
42 Cotton Cloth	1.7286	176.47	174.94	153.57	+	0.87	+	14.91
43 Woolen Cloth	0.8759	206.49	205.17	182.08	+	0.64	+	13.41
44 Readymade Garments	0.9739	182.09	181.43	163.15	+	0.36	+	11.61
45 Woolen Readymade Garments	0.3964	192.45	192.45	162.45	+	0.00	+	18.47
46 Hosiery	0.5094	194.30	193.46	172.27	+	0.43	+	12.79
47 Dopatta	0.4412	203.75	202.98	174.75	+	0.38	+	16.60
48 Cleaning and Laundry	0.2110	206.24	206.24	180.05	+	0.00	+	14.55
49 Tailoring	0.8840	218.55	217.30	193.31	+	0.58	+	13.06
50 Footwear	1.5504	159.00	149.78	142.07	+	6.16	+	11.92

+

Annexure A: Consumer Price Index Numbers by Commodity Groups & Commodities (2007-2008=100)

Item and Specification	Weight	Index Numbers			% Change in Jun 2013 over			
		Jun 13	May 13 12	Jun	May 2013	Jun 2012		
Housing, Water, Elec., Gas, Other	29.4149	154.65	154.54	153.35	+	0.07	+	0.85
51 House Rent	21.8149	144.57	144.57	135.02	+	0.00	+	7.07
52 Construction Input Items	0.5623	210.12	209.12	196.25	+	0.48	+	7.07
53 Construction Wage Rates	0.3331	181.81	179.47	166.44	+	1.30	+	9.23
54 Water Supply	0.4971	139.65	139.65	133.23	+	0.00	+	4.82
55 Electricity	4.3985	196.37	196.37	196.37	+	0.00	+	0.00
56 Gas	1.5756	143.81	142.58	264.42	+	0.86	-	45.61
57 Kerosene Oil	0.0057	267.67	266.68	253.30	+	0.37	+	5.67
58 Firewood Whole	0.2277	243.22	242.88	225.29	+	0.14	+	7.96
Furnished H.Hold Equip.& Hous	4.2082	185.82	184.71	173.20	+	0.60	+	7.29
59 Furniture	0.3315	174.82	174.07	162.55	+	0.43	+	7.55
60 Household Textiles	0.6489	180.81	179.92	169.15	+	0.49	+	6.89
61 Household Equipment	0.5936	162.40	161.74	154.82	+	0.41	+	4.90
62 Utensils	0.3212	184.55	184.02	171.16	+	0.29	+	7.82
63 Plastic Products	0.2547	181.60	180.43	172.84	+	0.65	+	5.07
64 Washing Soaps & Detergents	0.7893	203.46	201.05	189.05	+	1.20	+	7.62
65 Sewing Needle & Dr Cell	0.1496	166.36	163.49	148.03	+	1.76	+	12.38
66 Household Servant	1.0432	195.58	195.10	180.92	+	0.25	+	8.10
67 Marriage Hall Charges	0.0762	200.04	197.82	186.63	+	1.12	+	7.19
Health	2.1868	160.93	160.24	147.42	+	0.43	+	9.16
68 Drugs & Medicines	1.2667	140.94	140.91	131.03	+	0.02	+	7.56
69 Medical Equipments	0.0080	205.49	205.49	188.56	+	0.00	+	8.98
70 Doctor (MBBS) Clinic Fee	0.5904	203.36	201.10	180.36	+	1.12	+	12.75
71 Medical Tests	0.3217	160.67	160.23	150.49	+	0.27	+	6.76
Transport	7.2023	187.25	185.52	182.98	+	0.93	+	2.33
72 Motor Vehicles	0.6630	156.71	156.00	148.81	+	0.46	+	5.31
73 Motor Vehicle Accessories	0.2439	213.67	213.55	201.80	+	0.06	+	5.88
74 Motor Fuel	3.0269	179.10	175.32	180.20	+	2.16	-	0.61
75 Mechanical Service	0.4552	189.24	188.19	175.42	+	0.56	+	7.88
76 Motor Vehicle Tax	0.1099	153.74	153.74	152.02	+	0.00	+	1.13
77 Transport Services	2.7034	202.50	202.50	195.30	+	0.00	+	3.69
Communication	3.2198	128.73	128.71	123.62	+	0.02	+	4.13
78 Postal Services	0.0662	175.16	175.16	171.37	+	0.00	+	2.21
79 Communication & Apparatus	3.1536	127.75	127.73	122.61	+	0.02	+	4.19
Recreation & Culture	2.0227	177.84	176.58	164.37	+	0.71	+	8.19
80 Recreation & Culture	0.8634	122.65	122.42	121.37	+	0.19	+	1.05
81 Text Books	0.5706	260.03	256.86	230.22	+	1.23	+	12.95
82 Newspapers	0.1934	170.49	170.49	149.97	+	0.00	+	13.68
83 Stationery	0.3953	183.35	181.96	170.26	+	0.76	+	7.69
Education	3.9431	163.54	162.17	152.28	+	0.84	+	7.39
84 Education	3.9431	163.54	162.17	152.28	+	0.84	+	7.39
Restaurants & Hotels	1.2286	210.64	209.95	195.10	+	0.33	+	7.97
85 Readymade Food	1.2286	210.64	209.95	195.10	+	0.33	+	7.97
Miscellaneous Goods & Service	2.7550	202.39	202.61	190.51	-	0.11	+	6.24
86 Personal Care	1.4935	185.79	185.67	174.03	+	0.06	+	6.76
87 Cosmetics	0.3853	163.22	152.60	147.22	+	6.96	+	10.87
88 Blades	0.0322	176.40	174.81	168.23	+	0.91	+	4.86
89 Personal Equipments	0.8440	250.63	256.47	240.29	-	2.28	+	4.30

Annexure B: Wholesale Price Indices by Major Groups & Commodities

(2007-2008=100)

Item and Specification	Weight	Index Numbers			% Change in Jun 2013 over			
		Jun 13	May 13 12	Jun	May 2013	Jun 2012		
General	100.0000	199.21	197.23	189.37	+	1.00	+	5.20
Agriculture Forestry & Fisher	25.7674	209.16	204.69	189.25	+	2.18	+	10.52
001 Wheat	0.6297	198.50	191.19	163.58	+	3.82	+	21.35
002 Maize	0.6764	189.41	188.15	168.35	+	0.67	+	12.51
003 Rice	2.4413	174.41	172.17	156.72	+	1.30	+	11.29
004 Sorghum/Jowar	0.0214	259.71	243.92	206.28	+	6.47	+	25.90
005 Millet/Bajra	0.0374	191.77	183.84	164.48	+	4.31	+	16.59
006 Vegetables	1.2441	241.43	264.84	149.26	-	8.84	+	61.75
007 Fresh Fruits	1.5144	227.05	211.71	270.29	+	7.25	-	16.00
008 Dry Fruits	0.2478	194.73	192.74	171.61	+	1.03	+	13.47
009 Cotton Seeds	1.1511	164.31	167.16	176.68	-	1.70	-	7.00
010 Other Oil Seeds	0.0722	170.04	171.25	171.79	-	0.71	-	1.02
011 Edible Roots/Potatoes	0.2540	149.12	135.38	159.37	+	10.15	-	6.43
012 Stimulant and Spice Crops	0.1634	212.17	197.49	166.94	+	7.43	+	27.09
013 Pulses	0.4901	186.44	186.89	223.78	-	0.24	-	16.69
014 Sugar Crops	1.0725	267.92	267.92	267.92	+	0.00	+	0.00
015 Fibre Crops	5.3169	207.94	205.61	185.62	+	1.13	+	12.02
016 Unmanufactured Tobacco	0.0742	176.22	176.41	166.81	-	0.11	+	5.64
017 Poultry	0.5633	224.76	176.50	187.34	+	27.34	+	19.97
018 Raw Milk from Bovine Animals	7.0279	218.54	215.36	202.77	+	1.48	+	7.78
019 Eggs	0.5034	153.34	153.52	143.95	-	0.12	+	6.52
020 Raw Animal Materials/Wool	0.0351	150.66	146.46	136.50	+	2.87	+	10.37
021 Hides and Fur Skins, Raw	0.4834	141.49	140.56	137.42	+	0.66	+	2.96
022 Fuel Wood in Logs	0.0179	228.51	228.51	203.50	+	0.00	+	12.29
023 Fish Live Fresh or Chilled	1.7295	240.87	215.28	156.79	+	11.89	+	53.63
Ores/Minerals, Elec., Gas & W	12.0389	214.86	213.53	215.23	+	0.62	-	0.17
024 Coal not Agglomerated	0.7508	223.53	223.53	192.16	+	0.00	+	16.32
025 Natural Gas Liquified	5.7385	203.09	200.30	208.33	+	1.39	-	2.52
026 Salt and Pure Sodium Chloride	0.0584	203.88	203.88	168.19	+	0.00	+	21.22
027 Electrical Energy	5.4912	226.10	226.10	226.10	+	0.00	+	0.00
Food, Beverages, Tobacco, Textil	31.1122	192.87	191.52	180.94	+	0.70	+	6.59
Food Products, Beverages &	20.0718	195.63	194.18	186.43	+	0.75	+	4.93
028 Meat of Animals	3.4559	232.03	232.03	225.25	+	0.00	+	3.01
029 Vegetables and Fruit Juice	0.0058	190.57	189.97	179.40	+	0.32	+	6.23
030 Dried Fruits and Nuts	0.1733	222.76	221.30	201.37	+	0.66	+	10.62
031 Fruit Juices	0.3880	163.81	162.75	158.11	+	0.65	+	3.61
032 Vegetable Oils Refined	1.9242	159.65	159.34	157.10	+	0.19	+	1.62
033 Vegetable Ghee	1.5632	141.61	141.08	145.59	+	0.38	-	2.73
034 Oil Cakes	0.9611	171.55	169.06	140.07	+	1.47	+	22.47
035 Processed Liquid Milk	4.4437	208.15	208.43	200.35	-	0.13	+	3.89
036 Milk and Cream in Solid Form	0.0316	177.58	171.72	167.32	+	3.41	+	6.13
037 Ice Cream	0.0047	191.15	176.81	161.68	+	8.11	+	18.23
038 Dairy Products N.E.C	0.0117	213.25	212.62	204.27	+	0.30	+	4.40
039 Wheat Flour	2.3034	186.66	179.64	153.81	+	3.91	+	21.36
040 Other Cereal Flour	0.0604	163.97	170.46	215.04	-	3.81	-	23.75
041 Sugar Refined	1.7975	208.83	204.62	204.92	+	2.06	+	1.91
042 Chocolate	0.0139	99.19	99.19	100.26	+	0.00	-	1.07
043 Sugar Confectionary	0.0738	102.28	102.28	100.40	+	0.00	+	1.87
044 Coffee and Tea	0.7303	223.78	219.00	197.17	+	2.18	+	13.50
045 Spices	0.1449	227.90	238.45	303.27	-	4.42	-	24.85
046 Other Food Products	0.0336	314.63	314.63	318.54	+	0.00	-	1.23
047 Mineral Water	0.0207	175.01	171.58	165.88	+	2.00	+	5.50
048 Beverages	0.6303	139.28	139.24	135.23	+	0.03	+	2.99
049 Tobacco Products	1.2998	208.80	208.80	208.80	+	0.00	+	0.00
Textiles & Apparels	10.3289	190.61	190.09	174.56	+	0.27	+	9.19
050 Cotton Yarn	5.2491	209.76	209.33	191.40	+	0.21	+	9.59
051 Nylon Yarn	0.1719	189.67	189.60	179.55	+	0.04	+	5.64
052 Blended Yarn	0.1689	198.67	198.67	185.75	+	0.00	+	6.96
053 Woven Fabrics	0.0128	208.98	208.98	171.55	+	0.00	+	21.82
054 Cotton Fabrics	0.6343	182.84	182.84	177.38	+	0.00	+	3.08
055 Other Fabrics	1.1016	172.31	172.31	166.92	+	0.00	+	3.23
056 Silk and Reyon Fabrics	0.7350	158.62	157.86	142.56	+	0.48	+	11.27

Annexure B: Wholesale Price Indices by Major Groups & Commodities

(2007-2008=100)

Item and Specification	Weight	Index Numbers			% Change in Jun 2013 over	
		Jun 13	May 13 12	Jun	May 2013	Jun 2012
057 Towels	0.1235	213.19	210.01	189.19	+ 1.51	+ 12.69
058 Blankets	0.0029	185.21	185.21	162.38	+ 0.00	+ 14.06
059 Bed Sheets	0.0913	213.18	212.73	182.90	+ 0.21	+ 16.56
060 Quilts	0.0019	154.00	153.32	147.05	+ 0.44	+ 4.73
061 Woolen Carpets	0.0383	106.55	106.55	104.76	+ 0.00	+ 1.71
062 Synthetic Carpets	0.0566	114.41	114.41	139.83	+ 0.00	- 18.18
063 Hosiery Products	0.8832	185.30	185.14	164.67	+ 0.09	+ 12.53
064 Readymade Garments	1.0576	147.20	145.39	127.25	+ 1.24	+ 15.68
Leather Products	0.7115	147.99	137.06	118.56	+ 7.97	+ 24.82
065 Leather without Hair	0.2973	125.27	115.62	109.83	+ 8.35	+ 14.06
066 Other Leather N.E.C	0.2567	179.51	160.40	122.57	+ 11.91	+ 46.46
067 Footwears	0.1575	139.49	139.49	128.50	+ 0.00	+ 8.55
Other Transportable Goods	22.3659	202.56	201.98	199.83	+ 0.29	+ 1.37
068 Timber	0.0165	154.65	153.36	144.55	+ 0.84	+ 6.99
069 Printing Paper	0.4279	164.54	169.17	153.92	- 2.74	+ 6.90
070 Hard Board	0.1579	200.00	187.50	166.67	+ 6.67	+ 20.00
071 Coke	0.2797	163.45	163.45	163.45	+ 0.00	+ 0.00
072 Motor Spirit	1.5336	169.03	164.86	160.04	+ 2.53	+ 5.62
073 Diesel Oil	5.2664	248.72	249.51	245.87	- 0.32	+ 1.16
074 Kerosine Oil	0.2151	250.79	251.08	243.74	- 0.12	+ 2.89
075 Furnace Oil	3.2664	169.52	169.52	194.27	+ 0.00	- 12.74
076 Mobil Oil	0.7114	186.56	186.04	179.12	+ 0.28	+ 4.15
077 Chemicals	1.7720	160.39	159.30	145.80	+ 0.68	+ 10.01
078 Dyeing Material	0.1539	107.23	107.23	104.26	+ 0.00	+ 2.85
079 Fertilizers	2.8657	261.32	260.13	263.70	+ 0.46	- 0.90
080 Pesticides	0.2763	203.99	199.65	167.27	+ 2.17	+ 21.95
081 Insecticides	0.1276	123.90	123.02	118.26	+ 0.72	+ 4.77
082 Paints and Varnishes	0.1916	244.12	241.85	215.37	+ 0.94	+ 13.35
083 Medicines	1.1428	138.71	139.19	129.55	- 0.34	+ 7.07
084 Soaps and Detergents	0.8168	176.21	174.25	157.37	+ 1.12	+ 11.97
085 Auto Tyres	0.2703	184.54	181.43	176.49	+ 1.71	+ 4.56
086 Plastic Products	0.4550	197.98	196.65	188.26	+ 0.68	+ 5.16
087 Glass sheets	0.2089	201.02	201.02	177.10	+ 0.00	+ 13.51
088 Other Glass Articles	0.1635	206.09	206.09	217.98	+ 0.00	- 5.45
089 Ceramics and Sanitary Fixture	0.0244	161.77	161.77	146.66	+ 0.00	+ 10.30
090 Bricks, Blocks and Tiles	0.1566	185.87	184.29	170.93	+ 0.86	+ 8.74
091 Cement	1.8145	189.49	189.16	177.78	+ 0.17	+ 6.59
092 Bed Foam	0.0006	144.33	144.33	131.50	+ 0.00	+ 9.76
093 Matches	0.0505	142.72	142.72	122.82	+ 0.00	+ 16.20
Metal Product, Machinery & Eq	8.7156	162.20	160.87	157.22	+ 0.83	+ 3.17
094 Pig Iron	0.0593	128.97	128.97	128.97	+ 0.00	+ 0.00
095 Steel Bar and Sheets	1.4022	135.04	133.53	139.13	+ 1.13	- 2.94
096 Pipe Fittings	0.0780	148.98	148.98	142.31	+ 0.00	+ 4.69
097 Steel Products	0.3879	167.61	166.25	159.73	+ 0.82	+ 4.93
098 Engines and Motors	0.0046	109.07	109.07	109.07	+ 0.00	+ 0.00
099 Vacuum Pumps	0.0155	115.39	115.39	115.39	+ 0.00	+ 0.00
100 Air Conditioners	0.0049	179.78	179.78	172.67	+ 0.00	+ 4.12
101 Cultivators	0.0551	189.23	189.23	184.66	+ 0.00	+ 2.47
102 Chuff Cutter	0.1293	144.94	144.94	138.54	+ 0.00	+ 4.62
103 Tractors	0.0028	161.96	161.96	172.36	+ 0.00	- 6.03
104 Lathe Machines	0.0525	147.68	147.68	147.68	+ 0.00	+ 0.00
105 Concrete Mixture	0.0107	138.83	138.83	138.83	+ 0.00	+ 0.00
106 Fridge, WashM, SewM, Fans, Iron	1.1645	177.00	174.07	164.93	+ 1.68	+ 7.32
107 Electric Wires	0.0912	160.12	160.12	165.49	+ 0.00	- 3.24
108 Lighting Equipments	1.4431	151.78	147.94	146.79	+ 2.60	+ 3.40
109 Radio and Television	0.1843	126.49	126.49	132.73	+ 0.00	- 4.70
110 Motor Vehicles	0.0244	173.75	173.75	160.28	+ 0.00	+ 8.40
111 Motorcycles	0.2570	124.56	124.56	124.02	+ 0.00	+ 0.44
112 Bicycles	3.3483	178.81	178.81	171.52	+ 0.00	+ 4.25