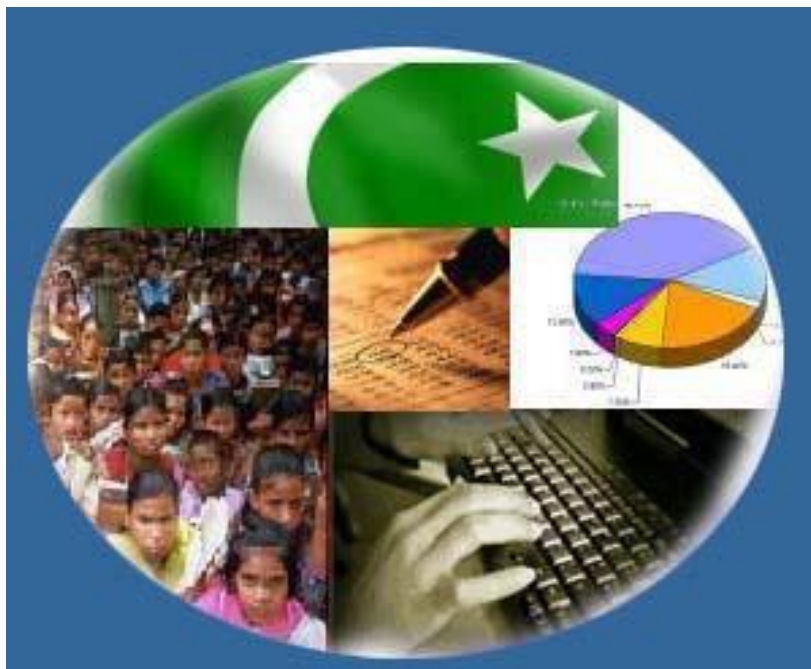




Monthly Review on Price Indices



October, 2013
(Base 2007-08)

Government of Pakistan
Statistics Division
Pakistan Bureau of Statistics
Islamabad

I. Inflation in Brief

1. CPI inflation, General, increased by 9.1% on year-on-year basis in October 2013 as compared to 7.4% in the previous month and 7.7% in October 2012. On month-on-month basis, it increased by 2.0% in October 2013 as compared to a decrease of 0.3% in the previous month and an increase of 0.4% in October 2012.
2. Core inflation measured by non-food non-energy CPI (Core NFNE) increased by 8.4% in October 2013 as compared to 8.7% in September 2013 (YoY) and by 10.1% in October 2012. Core NFNE inflation on MoM basis increased by 0.9% in October 2013 as compared to 0.6% a month earlier and 1.2% in October 2012.
3. Core inflation, measured by 20% weighted trimmed mean CPI (Core Trimmed) increased by 9.0% in October 2013 and by 7.6% in September 2013 (YoY) which increased by 9.7% in October 2012. Core Trimmed inflation has increased by 0.8% on MoM basis in October 2013 as compared to 0.6% in September 2013 which increased by 0.7% in October 2012.
4. SPI inflation on YoY basis increased by 10.5% in October 2013 as compared with 8.6% a month earlier and 6.7% in October 2012. On MoM basis, it increased by 1.2% in October 2013 as compared to a decrease of 0.2% a month earlier and 0.4% in October 2012.
5. WPI inflation on YoY basis increased to 9.8% in October 2013 compared with 8.7% a month earlier and 7.5% in October 2012. WPI inflation on MoM basis increased by 1.1% in October 2013 as compared to an increase of 0.7% a month earlier and 0.1% in October 2012.
6. Figures 1 and 2 show graphically the data of Table 1. Table 1.1 shows "Period Average" and "YoY" percent changes in indices of three years.

Table 1: Inflation (%) (Base 2007-08)

Period	CPI						Core Inflation				SPI**		WPI	
	General		Food		Non-food		NFNE*		Trimmed		YoY	MoM	YoY	MoM
	YoY	MoM	YoY	MoM	YoY	MoM	YoY	MoM	YoY	MoM				
Sep 12	8.8	0.8	7.6	0.7	9.7	0.9	10.4	0.4	10.4	0.5	8.0	1.2	7.8	0.3
Oct 12	7.7	0.4	5.8	-0.1	9.1	0.7	10.1	1.2	9.7	0.7	6.7	-0.4	7.5	0.1
Nov 12	6.9	-0.4	5.3	-0.3	8.1	-0.4	9.7	0.2	8.8	0.2	6.0	0.0	7.7	-0.4
Dec 12	7.9	0.2	7.7	0.0	8.1	0.4	9.8	0.5	9.2	0.3	8.2	0.0	9.6	0.4
Jan 13	8.1	1.7	8.1	1.9	8.1	1.5	9.9	1.2	9.9	1.0	9.2	1.9	8.6	1.2
Feb 13	7.4	-0.3	7.4	-1.3	7.4	0.3	9.6	0.4	9.2	0.2	9.4	0.1	8.3	0.3
Mar 13	6.6	0.4	6.3	0.5	6.7	0.3	9.0	0.4	8.4	0.2	8.7	0.8	7.9	0.3
Apr 13	5.8	1.1	5.5	1.4	6.0	0.9	8.7	1.1	7.6	0.7	6.6	-0.3	6.8	0.8
May 13	5.1	0.5	6.5	1.1	4.1	0.1	8.1	0.3	6.7	0.3	6.8	0.1	4.1	-0.4
Jun 13	5.9	0.7	7.9	1.1	4.4	0.5	7.8	0.4	6.8	0.6	7.9	2.5	5.2	1.0
Jul 13	8.3	2.0	9.2	3.0	7.6	1.3	8.2	1.5	7.8	1.2	9.8	2.3	6.5	1.6
Aug 13	8.5	1.2	10.3	2.0	7.3	0.6	8.5	0.6	7.9	0.6	10.1	1.5	8.3	2.6
Sep 13	7.4	-0.3	7.9	-1.5	7.0	0.6	8.7	0.6	7.6	0.6	8.8	0.1	8.7	0.7
Oct 13	9.1	2.0	9.8	1.7	8.6	2.2	8.4	0.9	9.0	0.8	10.5	1.2	9.8	1.1

*NFNE is non-food non-energy,

** SPI for quintile 1

Table 1.1 : Period Average and YoY % Changes of Indices (Base 2007-08)

Index	Averages July- October % Changes			October over October % Changes		
	2013-14	2012-13	2011-12	2013-14	2012-13	2011-12
CPI	8.32	8.76	11.34	9.08	7.66	10.97
SPI	9.80	7.64	9.58	10.54	6.75	6.50
WPI	8.31	7.58	17.80	9.76	7.55	15.41

Figure 1: CPI Inflation YoY, Special Indices

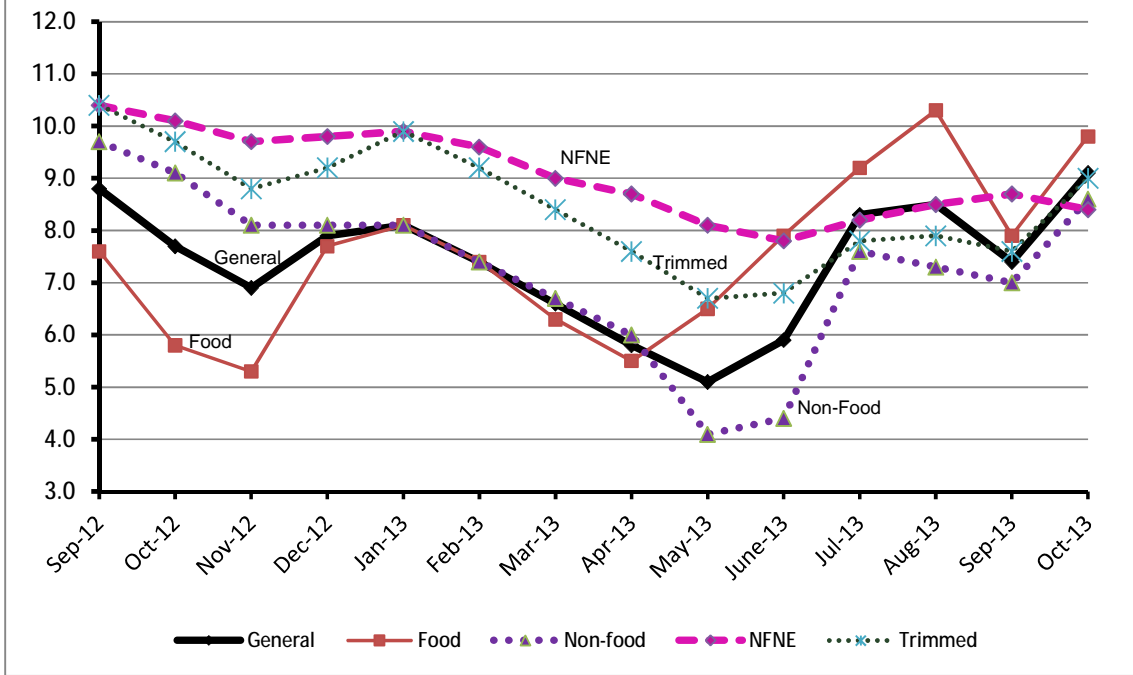
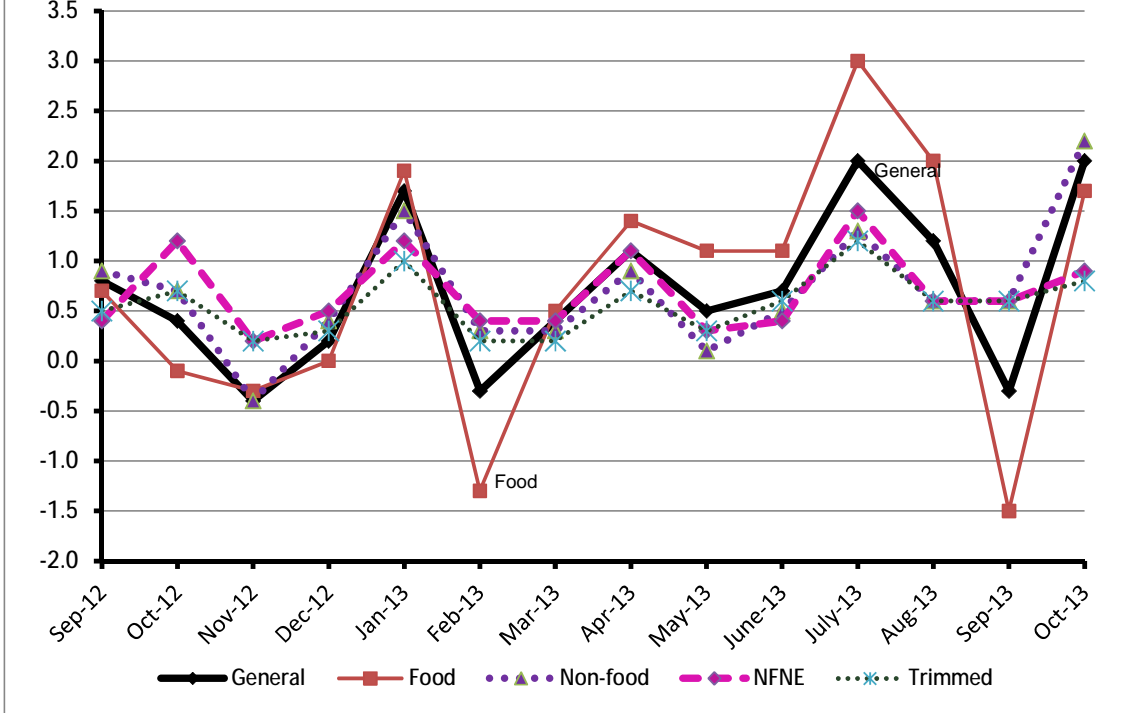


Figure 2: CPI Inflation MoM, Special Indices



II. Consumer Price Index (CPI)

The Consumer Price Index of October, 2013 has increased by 1.97% over September 2013 and increased by 9.08% over corresponding month of last year.

Table 2 : Consumer Price Index by Group of Commodities and Services (Base 2007-08)

No	Group	Group Weight (%)	Indices			% Change Oct 2013 over		Impact (In % points) Oct 2013 Over	
			Oct 2013	Sep 2013	Oct 2012	Sep 2013	Oct 2012	Sep 2013	Oct 2012
	General	100.00	188.82	185.18	173.01	1.97	9.08	1.97	9.08
1.	Food & Non-alcoholic Bev.	34.83	211.99	208.29	193.56	1.78	9.52	0.70	3.71
	<i>Non-perishable Food Items</i>	29.84	207.13	206.08	191.92	0.51	7.93	0.17	2.62
	<i>Perishable Food Items</i>	4.99	241.05	221.51	203.34	8.82	18.55	0.53	1.09
2.	Alcoholic Bev.& Tobacco	1.41	218.25	217.85	190.43	0.18	14.61	0.00	0.23
3.	Clothing & Footwear	7.57	194.51	193.59	170.38	0.48	14.16	0.04	1.06
4.	Housing, Water, Electricity, Gas & Fuels	29.41	164.17	157.75	149.95	4.07	9.48	1.02	2.42
5.	Furnishing & Household Equipment Maintenance	4.21	192.39	190.99	176.84	0.73	8.79	0.03	0.38
6.	Health	2.19	165.15	164.23	155.13	0.56	6.46	0.01	0.13
7.	Transport	7.20	197.06	194.54	191.22	1.30	3.05	0.10	0.24
8.	Communication	3.22	129.68	129.66	123.68	0.02	4.85	0.00	0.11
9.	Recreation & Culture	2.02	182.19	181.87	165.94	0.18	9.79	0.00	0.19
10.	Education	3.94	167.91	166.49	154.47	0.85	8.70	0.03	0.31
11.	Restaurants & Hotels	1.23	223.77	221.68	200.30	0.94	11.72	0.01	0.17
12.	Miscellaneous	2.76	208.36	206.86	198.94	0.73	4.74	0.02	0.15

Main contributors to month-on-month and year-on-year percentage changes are given below and detail is given in Annexure A.

1. **Month-on-month** Top few commodities which varied from previous month i.e. September 2013 are given below:-

Food Items Increased: Potatoes (24.54%), Onions (13.89%), Fresh Vegetables (10.10%), Tomatoes (7.85%), Sugar (3.16%), Fish (1.92%), Wheat Product (1.20%), Fresh Fruits (1.19%), Cereals (1.08%), Honey (1.05%), Wheat (0.97%), Pulse Masoor (0.97%), Readymade Food (0.94%), Bakery & Confectionary (0.82%), Dry Fruits (0.81%) and Sweetmeat (0.80%).

Decreased: Gram whole (1.30%), Pulse Gram (1.08%), Eggs (0.98%), Besan (0.87%), Pulse Moong (0.32%), Tea (0.30%), Mustard Oil (0.20%), Pulse Mash (0.10%) and Spices (0.02%).

Non-food Items Increased: Electricity (15.82%), Cosmetics (2.73%), Motor Fuel (2.58%), Kerosene Oil (1.66%), House Rent (1.59%), Personal Care (1.34%), Doctor (MBBS) Clinic Fee (1.13%), Sweing Needle & Dry Cell (1.12%), Medical Tests (1.11%), Woolen Cloth (1.00%), Household Textiles (0.97%), Utensils & Marriage Hall charges (0.94% each), Furniture & Education (0.85% each).

2. **Year-on-year:** Top few commodities which varied from previous year i.e. October 2012 are given below:-

Food Items Increased: Tomatoes (50.79%), Potatoes (44.41%), Onions (31.16%), Wheat (25.26%), Tea (24.93%), Wheat Flour (24.32%), Gur (22.84%), Chicken (19.71%), Wheat Product (18.24%), Fresh Vegetables (16.75%), Cigarettes (14.72%), Cereals (12.88%), Bakery & Confectionary (11.92%), Rice (11.81%), Readymade Food (11.72%), Pulse Masoor (11.70%), Beverages (11.40) and Beans (10.92%).

Decreased: Pulse Gram (31.25%), Besan (27.56%), Gram Whole (23.33%), Spices (18.10%), Eggs (7.65%), Vegetable Ghee (4.20%), Pulse Mash (3.24%), Cooking Oil (2.53%) and Mustard Oil (2.48%).

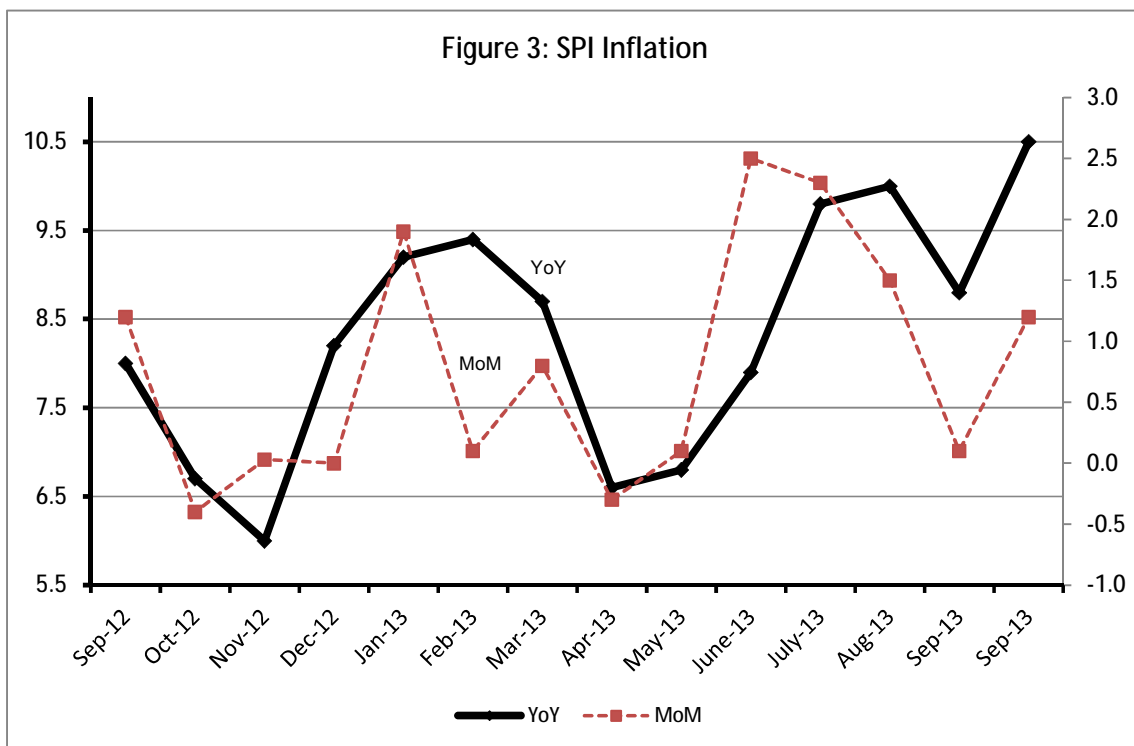
Non-food Items Increased: Postal Services (24.87%), Footwear (18.52%), Cosmetics (17.01%), Woolen Readymade Garments (16.07%), Text Books (16.01%), Electricity (15.82%), Tailoring (15.29%), Cotton Cloth (14.61%), Dopatta (13.19%), Sewing Needle & Dry Cell (13.03), Cleaning & Laundry (12.06%) and Readymade Garments (11.94%).

Decreased: Personal Equipments (1.36%).

III. Sensitive Price Indicator

Quintile-wise percentage changes YoY and MoM are given below in Table 3. The series from September 2012 to October 2013 is also graphed below in Figure 3.

Table 3 : Sensitive Price Indicator (Base 2007-08)					
Quintiles	Indices			% Change Oct 2013 over	
	Oct 2013	Sep 2013	Oct 2012	Sep 2013	Oct 2012
1	200.93	198.61	181.77	1.17	10.54
2	206.51	204.40	187.94	1.03	9.88
3	207.95	202.80	186.74	2.54	11.36
4	209.53	203.93	187.98	2.75	11.46
5	208.61	203.65	188.58	2.44	10.62
Combined	207.69	203.05	187.32	2.29	10.87



IV. Wholesale Price Index

The Wholesale Price Index for October 2013 increased by 1.13% over September 2013. It is increased by 9.76% over the corresponding month of the last year. YoY and MoM movements, from September 2012 to October 2013 are also graphed below in Figure 4.

Table 4 : Wholesale Price Index by Group of Commodities (Base 2007-08)									
No.	Group	Group Weight (%)	Indices			% Change Oct 2013 over		Impact (in %age points) Oct 2013 over	
			Oct 2013	Sep 2013	Oct 2012	Sep 2013	Oct 2012	Sep 2013	Oct 2012
	General	100.00	211.70	209.33	192.88	1.13	9.76	1.13	9.76
1.	Agriculture, Forestry & Fishery Products	25.77	220.96	218.32	194.13	1.21	13.82	0.32	3.58
2.	Ores & Minerals, Electricity, Gas & Water	12.04	243.64	240.04	207.79	1.50	17.25	0.21	2.24
3.	Food Products, Beverages & Tobacco, Textiles, Apparel & Leather Products	31.11	200.96	199.08	185.83	0.94	8.14	0.28	2.44
	i. Food Products, Bev. & Tobacco	20.07	202.24	199.98	190.73	1.13	6.03	0.22	1.20
	ii. Textiles and Apparel	10.33	199.57	198.31	180.94	0.64	10.30	0.06	1.00
	iii. Leather Products	0.71	184.76	184.76	118.56	0.00	55.84	0.00	0.24
4.	Other Transportable Goods except Metal Products, Machinery & Equipments	22.37	216.28	213.44	206.53	1.33	4.72	0.30	1.13
5.	Metal Products, Machinery & Equipments	8.72	166.77	166.39	158.67	0.23	5.10	0.02	0.37

Main contributors to month-on-month and year-on-year percentage changes are given below and detail is given in Annexure B.

- Month-on-month** Top few commodities which varied from previous month i.e. September 2013 are given below:-

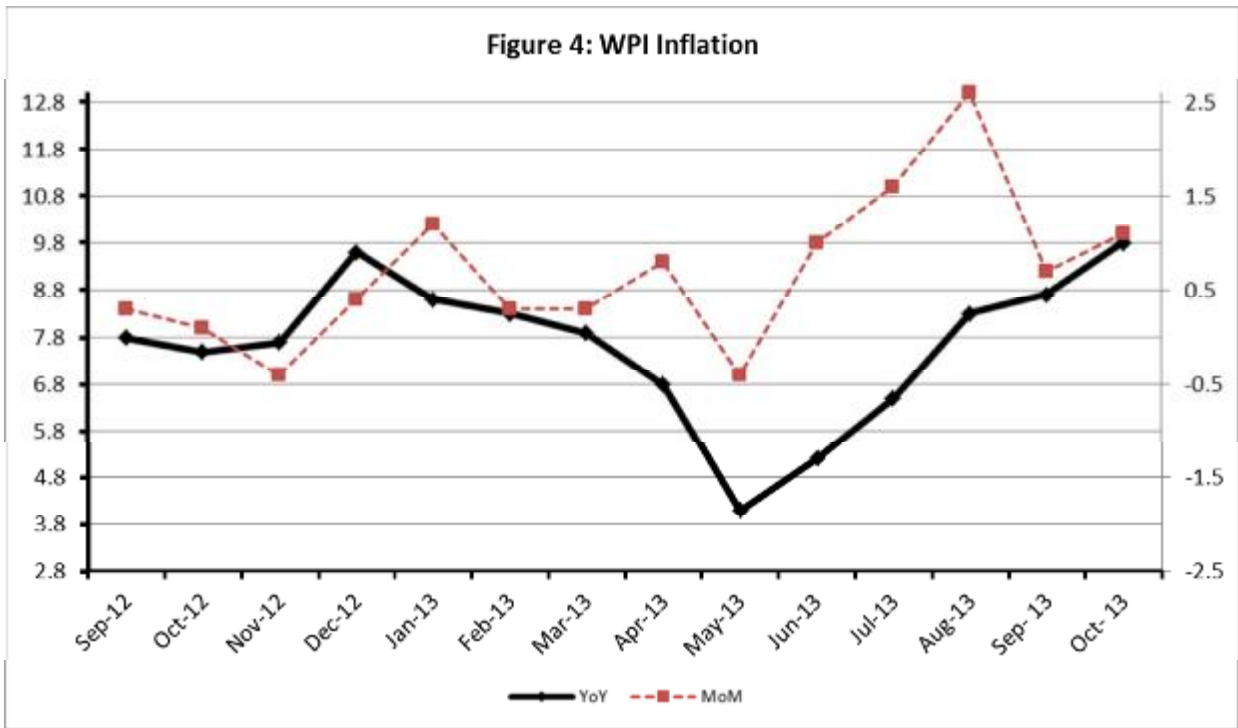
Increased: Edible Roots/ Potatoes (33.37%), Pipe Fittings (6.88%), Beverages (6.59%), towel (6.13%), Vegetables (6.11%), Tractor (4.85%), Milk & Cream (4.84%), Lathe Machines (4.73%), Cultivators (4.62%), Pesticides (4.44%), Motor spirits (3.78%), Diesel Oil (3.46%) & Electrical Energy (2.80%).

Decreased: Maize (5.93%), Other cereal Flour (4.29%), Other Food Product (2.67%), Poultry (2.34%), spices (2.33%), Rice (1.96%), Fertilizers (1.76%), and Eggs (1.08%).

2. **Year-on-year** Top few commodities which varied from previous year i.e. October, 2012 are given below:-

Increased: Other Leather N.E.C (115.22%), Edible Roots/ Potatoes (57.26%), Jowar (43.17%), Fish (40.50%), Salt and pure sodium chloride (31.91%), Stimulants and Spice Crops (28.09%), Leather without hair (27.92%), Fibre Crops (27.67%), Electrical Energy (27.13%) and Wheat (25.22%).

Decreased: Spices (37.22%), other Cereal Flour (35.38%), Pulses (17.55%), and Hard Board (10.43%)



Annexure A: Consumer Price Index Numbers by Commodity Groups & Commodities (2007-2008=100)

Item and Specification	Weight	Index Numbers			% Change in Oct 2013 over			
		Oct 13	Sep 13	Oct 12	Sep 2013	Oct 2012		
General	100.0000	188.82	185.18	173.10	+	1.97	+	9.08
Food & Non-alcoholic Beverage	34.8343	211.99	208.29	193.56	+	1.78	+	9.52
01 Wheat	0.3477	212.47	210.43	169.62	+	0.97	+	25.26
02 Wheat Flour	4.1648	221.49	219.75	178.16	+	0.79	+	24.32
03 Wheat Product	0.0959	203.19	200.79	171.84	+	1.20	+	18.24
04 Besan	0.1500	171.16	172.67	236.28	-	0.87	-	27.56
05 Rice	1.5821	192.27	191.49	171.96	+	0.41	+	11.81
06 Cereals	0.1563	227.50	225.08	201.55	+	1.08	+	12.88
07 Bakery & Confectionary	1.1550	193.77	192.20	173.13	+	0.82	+	11.92
08 Nimco	0.4574	213.57	212.27	196.94	+	0.61	+	8.44
09 Meat	2.4303	228.63	227.90	218.61	+	0.32	+	4.58
10 Chicken	1.3596	172.68	172.37	144.25	+	0.18	+	19.71
11 Fish	0.2970	208.46	204.54	190.61	+	1.92	+	9.36
12 Milk Fresh	6.6800	230.76	229.63	215.09	+	0.49	+	7.29
13 Milk Products	0.6338	225.47	224.25	208.96	+	0.54	+	7.90
14 Milk Powder	0.1129	197.75	196.38	182.84	+	0.70	+	8.15
15 Eggs	0.4555	198.88	200.85	215.35	-	0.98	-	7.65
16 Mustard Oil	0.0952	157.41	157.73	161.41	-	0.20	-	2.48
17 Cooking Oil	1.7538	161.21	161.00	165.39	+	0.13	-	2.53
18 Vegetable Ghee	2.0714	156.04	155.71	162.88	+	0.21	-	4.20
19 Dry Fruits	0.2543	221.30	219.52	201.35	+	0.81	+	9.91
20 Fresh Fruits	1.8649	195.24	192.94	188.87	+	1.19	+	3.37
21 Pulse Masoor	0.2712	159.87	158.34	143.13	+	0.97	+	11.70
22 Pulse Moong	0.2336	232.81	233.56	219.90	-	0.32	+	5.87
23 Pulse Mash (Washed)	0.2098	187.13	187.31	193.39	-	0.10	-	3.24
24 Pulse Gram	0.2361	163.71	165.50	238.12	-	1.08	-	31.25
25 Gram Whole	0.1616	174.43	176.72	227.51	-	1.30	-	23.33
26 Beans	0.0269	234.82	233.29	211.70	+	0.66	+	10.92
27 Potatoes	0.4452	295.14	236.99	204.38	+	24.54	+	44.41
28 Onion	0.5093	322.63	283.29	245.99	+	13.89	+	31.16
29 Tomatoes	0.4172	234.89	217.79	155.77	+	7.85	+	50.79
30 Fresh Vegetables	1.7543	253.79	230.51	217.38	+	10.10	+	16.75
31 Sugar	1.0445	200.64	194.50	195.57	+	3.16	+	2.59
32 Gur	0.0220	276.11	275.82	224.78	+	0.11	+	22.84
33 Honey	0.0446	260.63	257.91	246.00	+	1.05	+	5.95
34 SweetMeat	0.2483	218.95	217.22	204.05	+	0.80	+	7.30
35 Beverages	1.1990	188.18	187.70	168.93	+	0.26	+	11.40
36 Jam, Tomato Ketchup & Pickles	0.2454	188.91	188.19	174.76	+	0.38	+	8.10
37 Condiments	0.2656	220.82	219.19	212.16	+	0.74	+	4.08
38 Spices	0.5441	214.81	214.85	262.27	-	0.02	-	18.10
39 Tea	0.8377	253.90	254.67	203.23	-	0.30	+	24.93
Alcoholic Beverages, Tobacco	1.4135	218.25	217.85	190.43	+	0.18	+	14.61
40 Cigarettes	1.3906	218.68	218.30	190.62	+	0.17	+	14.72
41 Betel Leaves & Nuts	0.0229	192.62	190.83	178.37	+	0.94	+	7.99
Clothing & Footwear	7.5708	194.51	193.59	170.38	+	0.48	+	14.16
42 Cotton Cloth	1.7286	181.33	180.48	158.22	+	0.47	+	14.61
43 Woolen Cloth	0.8759	211.03	208.95	190.45	+	1.00	+	10.81
44 Readymade Garments	0.9739	192.61	191.11	172.07	+	0.78	+	11.94
45 Woolen Readymade Garments	0.3964	196.12	194.99	168.96	+	0.58	+	16.07
46 Hosiery	0.5094	201.09	200.13	181.55	+	0.48	+	10.76
47 Dopatta	0.4412	210.56	209.40	186.02	+	0.55	+	13.19
48 Cleaning and Laundry	0.2110	213.08	212.30	190.15	+	0.37	+	12.06
49 Tailoring	0.8840	233.15	232.70	202.23	+	0.19	+	15.29
50 Footwear	1.5504	169.38	169.25	142.91	+	0.08	+	18.52

Annexure A: Consumer Price Index Numbers by Commodity Groups & Commodities (2007-2008=100)

Item and Specification	Weight	Index Numbers			% Change in Oct 2013 over	
		Oct 13	Sep 13	Oct 12	Sep 2013	Oct 2012
<i>Housing, Water, Elec., Gas, Other</i>	29.4149	164.17	157.75	149.95	+ 4.07	+ 9.48
51 House Rent	21.8149	150.59	148.24	139.61	+ 1.59	+ 7.86
52 Construction Input Items	0.5623	218.32	217.40	201.21	+ 0.42	+ 8.50
53 Construction Wage Rates	0.3331	188.80	188.19	170.75	+ 0.32	+ 10.57
54 Water Supply	0.4971	145.80	145.80	133.23	+ 0.00	+ 9.43
55 Electricity	4.3985	227.44	196.37	196.37	+ 15.82	+ 15.82
56 Gas	1.5756	143.81	143.81	134.34	+ 0.00	+ 7.05
57 Kerosene Oil	0.0057	293.68	288.89	274.09	+ 1.66	+ 7.15
58 Firewood Whole	0.2277	250.91	249.90	228.19	+ 0.40	+ 9.96
<i>Furnished H.Hold Equip.& Hous</i>	4.2082	192.39	190.99	176.84	+ 0.73	+ 8.79
59 Furniture	0.3315	182.22	180.68	167.17	+ 0.85	+ 9.00
60 Household Textiles	0.6489	188.19	186.39	173.23	+ 0.97	+ 8.64
61 Household Equipment	0.5936	164.21	163.50	156.81	+ 0.43	+ 4.72
62 Utensils	0.3212	190.82	189.05	174.91	+ 0.94	+ 9.10
63 Plastic Products	0.2547	187.78	186.86	174.34	+ 0.49	+ 7.71
64 Washing Soaps & Detergents	0.7893	211.38	210.04	191.20	+ 0.64	+ 10.55
65 Sewing Needle & Dr Cell	0.1496	170.32	168.44	150.69	+ 1.12	+ 13.03
66 Household Servant	1.0432	203.63	202.20	186.45	+ 0.71	+ 9.21
67 Marriage Hall Charges	0.0762	206.52	204.59	193.11	+ 0.94	+ 6.94
<i>Health</i>	2.1868	165.15	164.23	155.13	+ 0.56	+ 6.46
68 Drugs & Medicines	1.2667	142.10	142.09	137.39	+ 0.01	+ 3.43
69 Medical Equipments	0.0080	208.73	208.73	195.91	+ 0.00	+ 6.54
70 Doctor (MBBS) Clinic Fee	0.5904	214.87	212.47	192.89	+ 1.13	+ 11.40
71 Medical Tests	0.3217	163.57	161.78	154.65	+ 1.11	+ 5.77
<i>Transport</i>	7.2023	197.06	194.54	191.22	+ 1.30	+ 3.05
72 Motor Vehicles	0.6630	160.39	159.74	152.25	+ 0.41	+ 5.35
73 Motor Vehicle Accessories	0.2439	220.01	219.28	205.45	+ 0.33	+ 7.09
74 Motor Fuel	3.0269	195.25	190.34	193.27	+ 2.58	+ 1.02
75 Mechanical Service	0.4552	196.39	195.60	181.25	+ 0.40	+ 8.35
76 Motor Vehicle Tax	0.1099	153.74	153.74	152.02	+ 0.00	+ 1.13
77 Transport Services	2.7034	207.87	207.03	200.46	+ 0.41	+ 3.70
<i>Communication</i>	3.2198	129.68	129.66	123.68	+ 0.02	+ 4.85
78 Postal Services	0.0662	215.89	215.89	172.89	+ 0.00	+ 24.87
79 Communication & Apparatus	3.1536	127.87	127.85	122.65	+ 0.02	+ 4.26
<i>Recreation & Culture</i>	2.0227	182.19	181.87	165.94	+ 0.18	+ 9.79
80 Recreation & Culture	0.8634	125.46	124.90	121.85	+ 0.45	+ 2.96
81 Text Books	0.5706	267.10	266.88	230.23	+ 0.08	+ 16.01
82 Newspapers	0.1934	170.49	170.49	155.91	+ 0.00	+ 9.35
83 Stationery	0.3953	189.24	189.17	174.36	+ 0.04	+ 8.53
<i>Education</i>	3.9431	167.91	166.49	154.47	+ 0.85	+ 8.70
84 Education	3.9431	167.91	166.49	154.47	+ 0.85	+ 8.70
<i>Restaurants & Hotels</i>	1.2286	223.77	221.68	200.30	+ 0.94	+ 11.72
85 Readymade Food	1.2286	223.77	221.68	200.30	+ 0.94	+ 11.72
<i>Miscellaneous Goods & Service</i>	2.7550	208.36	206.86	198.94	+ 0.73	+ 4.74
86 Personal Care	1.4935	190.82	188.30	178.18	+ 1.34	+ 7.09
87 Cosmetics	0.3853	174.26	169.63	148.93	+ 2.73	+ 17.01
88 Blades	0.0322	180.16	180.16	171.51	+ 0.00	+ 5.04
89 Personal Equipments	0.8440	256.05	257.70	259.57	- 0.64	- 1.36

Annexure B: Wholesale Price Indices by Major Groups & Commodities (2007-2008=100)

Item and Specification	Weight	Index Numbers			% Change in Oct 2013 over			
		Oct 13	Sep 13	Oct 12	Sep 2013	Oct 2012		
General	100.0000	211.70	209.33	192.88	+	1.13	+	9.76
Agriculture Forestry & Fisher	25.7674	220.96	218.32	194.13	+	1.21	+	13.82
001 Wheat	0.6297	222.41	221.91	177.61	+	0.23	+	25.22
002 Maize	0.6764	182.03	193.51	167.05	-	5.93	+	8.97
003 Rice	2.4413	174.66	178.15	163.86	-	1.96	+	6.59
004 Sorghum / Jowar	0.0214	263.80	266.44	184.26	-	0.99	+	43.17
005 Millet / Bajra	0.0374	185.50	187.35	194.58	-	0.99	-	4.67
006 Vegetables	1.2441	333.60	314.40	269.17	+	6.11	+	23.94
007 Fresh Fruits	1.5144	221.48	220.14	183.93	+	0.61	+	20.42
008 Dry Fruits	0.2478	192.11	188.16	173.49	+	2.10	+	10.73
009 Cotton Seeds	1.1511	168.29	165.07	170.28	+	1.95	-	1.17
010 Other Oil Seeds	0.0722	175.89	175.36	183.21	+	0.30	-	4.00
011 Edible Roots / Potatoes	0.2540	308.49	231.30	196.16	+	33.37	+	57.26
012 Stimulant & Spice Crops	0.1634	261.90	254.77	204.46	+	2.80	+	28.09
013 Pulses	0.4901	175.64	176.48	213.03	-	0.48	-	17.55
014 Sugar Crops	1.0725	267.92	267.92	267.92	+	0.00	+	0.00
015 Fibre Crops	5.3169	225.78	219.53	176.84	+	2.85	+	27.67
016 Unmanufactured Tobacco	0.0742	181.07	181.07	168.99	+	0.00	+	7.15
017 Poultry	0.5633	173.31	177.47	143.42	-	2.34	+	20.84
018 Raw Milk from Bovine Animals	7.0279	223.35	222.52	213.76	+	0.37	+	4.49
019 Eggs	0.5034	203.29	205.51	217.03	-	1.08	-	6.33
020 Raw Animal Materials / Wool	0.0351	153.55	153.55	136.65	+	0.00	+	12.37
021 Hides & Fur Skins, Raw	0.4834	144.43	145.03	137.17	-	0.41	+	5.29
022 Fuel Wood in Logs	0.0179	232.88	234.96	205.02	-	0.89	+	13.59
023 Fish Live Fresh or Chilled	1.7295	248.24	249.62	176.68	-	0.55	+	40.50
Ores/Minerals, Elec., Gas & W	12.0389	243.64	240.04	207.79	+	1.50	+	17.25
024 Coal not Agglomerated	0.7508	223.53	223.53	196.08	+	0.00	+	14.00
025 Natural Gas Liquified	5.7385	204.63	204.58	192.25	+	0.02	+	6.44
026 Salt & Pure Sodium Chloride	0.0584	217.04	217.04	164.54	+	0.00	+	31.91
027 Electrical Energy	5.4912	287.44	279.61	226.10	+	2.80	+	27.13
Food, Beverages, Tobacco, Textil	31.1122	200.96	199.08	185.83	+	0.94	+	8.14
Food Products, Beverages &	20.0718	202.24	199.98	190.73	+	1.13	+	6.03
028 Meat of Animals	3.4559	239.95	233.93	227.09	+	2.57	+	5.66
029 Vegetables & Fruit Juice	0.0058	192.05	192.05	185.05	+	0.00	+	3.78
030 Dried Fruits & Nuts	0.1733	223.95	223.21	212.04	+	0.33	+	5.62
031 Fruit Juices	0.3880	165.10	165.08	157.15	+	0.01	+	5.06
032 Vegetable Oils Refined	1.9242	160.07	161.04	155.32	-	0.60	+	3.06
033 Vegetable Ghee	1.5632	140.53	140.69	141.43	-	0.11	-	0.64
034 Oil Cakes	0.9611	181.08	176.21	172.81	+	2.76	+	4.79
035 Processed Liquid Milk	4.4437	205.54	205.54	208.43	+	0.00	-	1.39
036 Milk & Cream in Solid Form	0.0316	188.09	179.40	170.79	+	4.84	+	10.13
037 Ice Cream	0.0047	209.79	209.53	167.68	+	0.12	+	25.11
038 Dairy Products N.E.C	0.0117	217.26	216.63	202.69	+	0.29	+	7.19
039 Wheat Flour	2.3034	205.40	202.67	164.13	+	1.35	+	25.14
040 Other Cereal Flour	0.0604	134.55	138.44	208.22	-	2.81	-	35.38
041 Sugar Refined	1.7975	218.48	212.34	204.34	+	2.89	+	6.92
042 Chocolate	0.0139	99.19	99.19	99.19	+	0.00	+	0.00
043 Sugar Confectionary	0.0738	102.28	102.28	100.40	+	0.00	+	1.87
044 Coffee & Tea	0.7303	230.00	230.54	192.33	-	0.23	+	19.59
045 Spices	0.1449	191.28	195.85	304.68	-	2.33	-	37.22
046 Other Food Products	0.0336	308.23	316.68	323.46	-	2.67	-	4.71
047 Mineral Water	0.0207	181.84	180.22	168.29	+	0.90	+	8.05
048 Beverages	0.6303	148.83	139.63	137.86	+	6.59	+	7.96
049 Tobacco Products	1.2998	242.41	242.41	208.80	+	0.00	+	16.10
Textiles & Apparels	10.3289	199.57	198.31	180.94	+	0.64	+	10.30
050 Cotton Yarn	5.2491	223.38	222.40	200.08	+	0.44	+	11.65
051 Nylon Yarn	0.1719	183.61	182.19	176.45	+	0.78	+	4.06
052 Blended Yarn	0.1689	202.06	200.64	190.06	+	0.71	+	6.31
053 Woven Fabrics	0.0128	218.12	217.16	196.74	+	0.44	+	10.87
054 Cotton Fabrics	0.6343	187.77	187.43	173.68	+	0.18	+	8.11

Annexure B: Wholesale Price Indices by Major Groups & Commodities (2007-2008=100)

Item and Specification	Weight	Index Numbers			% Change in Oct 2013 over	
		Oct 13	Sep 13	Oct 12	Sep 2013	Oct 2012
055 Other Fabrics	1.1016	178.98	175.74	165.62	+ 1.84	+ 8.07
056 Silk & Reyon Fabrics	0.7350	160.48	160.08	151.23	+ 0.25	+ 6.12
057 Towels	0.1235	231.87	218.47	200.68	+ 6.13	+ 15.54
058 Blankets	0.0029	189.62	185.21	172.59	+ 2.38	+ 9.87
059 Bed Sheets	0.0913	223.74	217.78	197.94	+ 2.74	+ 13.03
060 Quilts	0.0019	160.74	156.32	147.05	+ 2.83	+ 9.31
061 Woolen Carpets	0.0383	106.55	106.55	106.55	+ 0.00	+ 0.00
062 Synthetic Carpets	0.0566	114.41	114.41	113.15	+ 0.00	+ 1.11
063 Hosiery Products	0.8832	185.37	185.30	173.15	+ 0.04	+ 7.06
064 Readymade Garments	1.0576	153.12	152.13	135.15	+ 0.65	+ 13.30
Leather Products	0.7115	184.76	184.76	118.56	+ 0.00	+ 55.84
065 Leather Without Hair	0.2973	140.50	140.50	109.83	+ 0.00	+ 27.92
066 Other Leather N.E.C	0.2567	263.79	263.79	122.57	+ 0.00	+ 115.22
067 Footwears	0.1575	139.49	139.49	128.50	+ 0.00	+ 8.55
Other Transportable Goods	22.3659	216.28	213.44	206.53	+ 1.33	+ 4.72
068 Timber	0.0165	163.35	161.45	148.07	+ 1.18	+ 10.32
069 Printing Paper	0.4279	167.02	164.84	147.96	+ 1.32	+ 12.88
070 Hard Board	0.1579	214.58	208.33	239.58	+ 3.00	- 10.43
071 Coke	0.2797	163.45	163.45	163.45	+ 0.00	+ 0.00
072 Motor Spirit	1.5336	191.35	184.38	174.17	+ 3.78	+ 9.86
073 Diesel Oil	5.2664	279.68	270.32	268.79	+ 3.46	+ 4.05
074 Kerosine Oil	0.2151	288.36	282.64	273.51	+ 2.02	+ 5.43
075 Furnace Oil	3.2664	182.48	179.02	179.20	+ 1.93	+ 1.83
076 Mobil Oil	0.7114	193.09	192.70	182.64	+ 0.20	+ 5.72
077 Chemicals	1.7720	165.70	165.49	149.01	+ 0.13	+ 11.20
078 Dyeing Material	0.1539	104.26	104.26	104.26	+ 0.00	+ 0.00
079 Fertilizers	2.8657	264.71	269.45	259.86	- 1.76	+ 1.87
080 Pesticides	0.2763	222.93	213.45	197.49	+ 4.44	+ 12.88
081 Insecticides	0.1276	131.09	129.93	117.46	+ 0.89	+ 11.60
082 Paints & Varnishes	0.1916	249.49	247.70	237.29	+ 0.72	+ 5.14
083 Medicines	1.1428	138.77	138.77	139.44	+ 0.00	- 0.48
084 Soaps & Detergents	0.8168	178.79	178.79	168.39	+ 0.00	+ 6.18
085 Auto Tyres	0.2703	185.57	185.57	180.73	+ 0.00	+ 2.68
086 Plastic Products	0.4550	199.24	199.06	191.31	+ 0.09	+ 4.15
087 Glass sheets	0.2089	205.47	204.55	190.93	+ 0.45	+ 7.62
088 Other Glass Articles	0.1635	206.09	206.09	189.33	+ 0.00	+ 8.85
089 Ceramics & Sanitary Fixture	0.0244	170.85	166.88	157.32	+ 2.38	+ 8.60
090 Bricks, Blocks & Tiles	0.1566	192.69	188.17	172.14	+ 2.40	+ 11.94
091 Cement	1.8145	200.39	201.55	183.17	- 0.58	+ 9.40
092 Bed Foam	0.0006	147.67	145.33	140.00	+ 1.61	+ 5.48
093 Matches	0.0505	143.20	143.20	126.70	+ 0.00	+ 13.02
Metal Product, Machinery & Eq	8.7156	166.77	166.39	158.67	+ 0.23	+ 5.10
094 Pig Iron	0.0593	128.97	128.97	128.97	+ 0.00	+ 0.00
095 Steel Bar & Sheets	1.4022	141.14	141.14	135.96	+ 0.00	+ 3.81
096 Pipe Fittings	0.0780	160.63	150.29	141.47	+ 6.88	+ 13.54
097 Steel Products	0.3879	168.46	168.46	161.94	+ 0.00	+ 4.03
098 Engines & Motors	0.0046	109.07	109.07	109.07	+ 0.00	+ 0.00
099 Vacuum Pumps	0.0155	115.39	115.39	115.39	+ 0.00	+ 0.00
100 Air Conditioners	0.0049	181.12	179.78	172.67	+ 0.75	+ 4.89
101 Cultivators	0.0551	200.36	191.51	184.66	+ 4.62	+ 8.50
102 Chuff Cutter	0.1293	144.94	144.94	138.54	+ 0.00	+ 4.62
103 Tractors	0.0028	169.82	161.96	161.96	+ 4.85	+ 4.85
104 Lathe Machines	0.0525	155.90	148.86	147.68	+ 4.73	+ 5.57
105 Concrete Mixture	0.0107	138.83	138.83	138.83	+ 0.00	+ 0.00
106 Fridge, WashM, SewM, Fans, Iron	1.1645	181.62	180.51	163.68	+ 0.61	+ 10.96
107 Electric Wires	0.0912	168.13	168.13	159.57	+ 0.00	+ 5.36
108 Lighting Equipments	1.4431	162.52	162.27	145.21	+ 0.15	+ 11.92
109 Radio & Television	0.1843	126.49	126.49	126.46	+ 0.00	+ 0.02
110 Motor Vehicles	0.0244	174.21	174.21	167.70	+ 0.00	+ 3.88
111 Motorcycles	0.2570	124.80	124.80	125.19	+ 0.00	- 0.31
112 Bicycles	3.3483	180.99	180.99	177.87	+ 0.00	+ 1.75