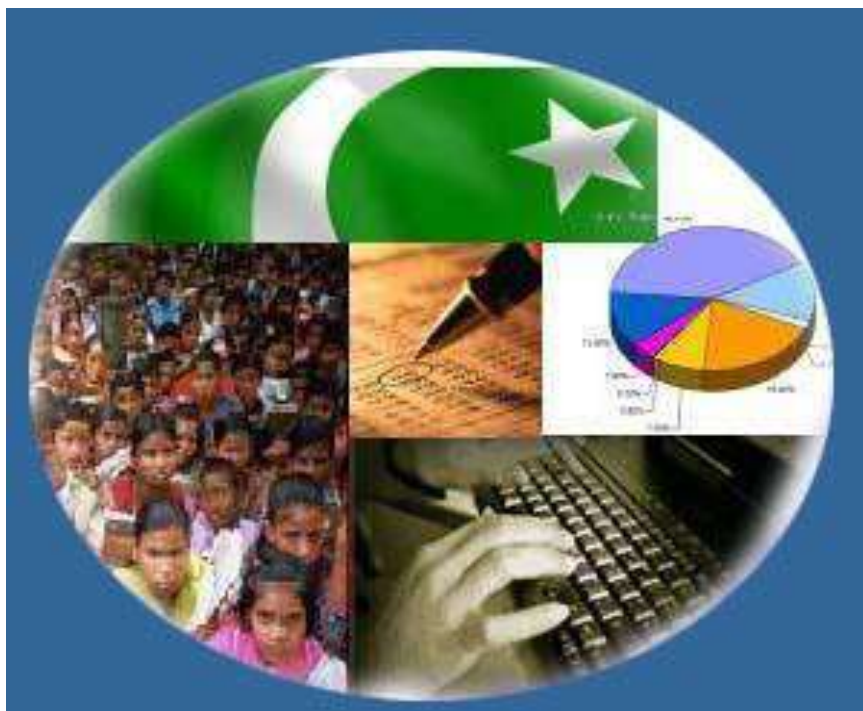




Monthly Review on Price Indices



November, 2013
(Base 2007-08)

Government of Pakistan
Statistics Division
Pakistan Bureau of Statistics
Islamabad

I. Inflation in Brief

1. CPI inflation, General, increased by 10.9% on year-on-year basis in November 2013 as compared to 9.1% in the previous month and 6.9% in November 2012. On month-on-month basis, it increased by 1.3% in November 2013 as compared to 2.0% in the previous month and a decrease of 0.4% in November 2012.
2. Core inflation measured by non-food non-energy CPI (Core NFNE) increased by 8.5% in November 2013 as compared to 8.4% in October 2013 (YoY) and by 9.7% in November 2012. Core NFNE inflation on MoM basis increased by 0.3% in November 2013 as compared to 0.9% a month earlier and 0.2% in November 2012.
3. Core inflation, measured by 20% weighted trimmed mean CPI (Core Trimmed) increased by 9.2% in November 2013 and by 9.0% in October 2013 (YoY) which increased by 8.8% in November 2012. Core Trimmed inflation has increased by 0.4% on MoM basis in November 2013 as compared to 0.8% in October 2013 which increased by 0.2% in November 2012.
4. SPI inflation on YoY basis increased by 14.1% in November 2013 as compared with 10.5% a month earlier and 6.0% in November 2012. On MoM basis, it increased by 3.2% in November 2013 as compared to an increase of 1.2% a month earlier and 0.0% in November 2012.
5. WPI inflation on YoY basis increased by 10.4% in November 2013 as compared with 9.8% a month earlier and 7.7% in November 2012. WPI inflation on MoM basis increased by 0.3% in November 2013 as compared to an increase of 1.1% a month earlier and a decrease of 0.4% in November 2012.
6. Figures 1 and 2 show graphically the data of Table 1. Table 1.1 shows "Period Average" and "YoY" percent changes in indices of three years.

*1 Actual figure is 0.03, displayed in round figures.

Table 1: Inflation (%) (Base 2007-08)

Period	CPI						Core Inflation				SPI**		WPI	
	General		Food		Non-food		NFNE*		Trimmed		YoY	MoM	YoY	MoM
	YoY	MoM	YoY	MoM	YoY	MoM	YoY	MoM	YoY	MoM				
Oct 12	7.7	0.4	5.8	-0.1	9.1	0.7	10.1	1.2	9.7	0.7	6.7	-0.4	7.5	0.1
Nov 12	6.9	-0.4	5.3	-0.3	8.1	-0.4	9.7	0.2	8.8	0.2	6.0	0.0	7.7	-0.4
Dec 12	7.9	0.2	7.7	0.0	8.1	0.4	9.8	0.5	9.2	0.3	8.2	0.0	9.6	0.4
Jan 13	8.1	1.7	8.1	1.9	8.1	1.5	9.9	1.2	9.9	1.0	9.2	1.9	8.6	1.2
Feb 13	7.4	-0.3	7.4	-1.3	7.4	0.3	9.6	0.4	9.2	0.2	9.4	0.1	8.3	0.3
Mar 13	6.6	0.4	6.3	0.5	6.7	0.3	9.0	0.4	8.4	0.2	8.7	0.8	7.9	0.3
Apr 13	5.8	1.1	5.5	1.4	6.0	0.9	8.7	1.1	7.6	0.7	6.6	-0.3	6.8	0.8
May 13	5.1	0.5	6.5	1.1	4.1	0.1	8.1	0.3	6.7	0.3	6.8	0.1	4.1	-0.4
Jun 13	5.9	0.7	7.9	1.1	4.4	0.5	7.8	0.4	6.8	0.6	7.9	2.5	5.2	1.0
Jul 13	8.3	2.0	9.2	3.0	7.6	1.3	8.2	1.5	7.8	1.2	9.8	2.3	6.5	1.6
Aug 13	8.5	1.2	10.3	2.0	7.3	0.6	8.5	0.6	7.9	0.6	10.1	1.5	8.3	2.6
Sep 13	7.4	-0.3	7.9	-1.5	7.0	0.6	8.7	0.6	7.6	0.6	8.8	0.1	8.7	0.7
Oct 13	9.1	2.0	9.8	1.7	8.6	2.2	8.4	0.9	9.0	0.8	10.5	1.2	9.8	1.1
Nov 13	10.9	1.3	13.0	2.6	9.4	0.3	8.5	0.3	9.2	0.4	14.1	3.2	10.4	0.3

*NFNE is non-food non-energy,

** SPI for quintile 1

Table 1.1 : Period Average and YoY % Changes of Indices (Base 2007-08)

Index	Averages July- November % Changes			November over November % Changes		
	2013-14	2012-13	2011-12	2013-14	2012-13	2011-12
CPI	8.84	8.39	11.10	10.90	6.93	10.19
SPI	10.66	7.31	8.36	14.07	6.00	3.77
WPI	8.74	7.61	16.58	10.44	7.73	11.96

Figure 1: CPI Inflation YoY, Special Indices

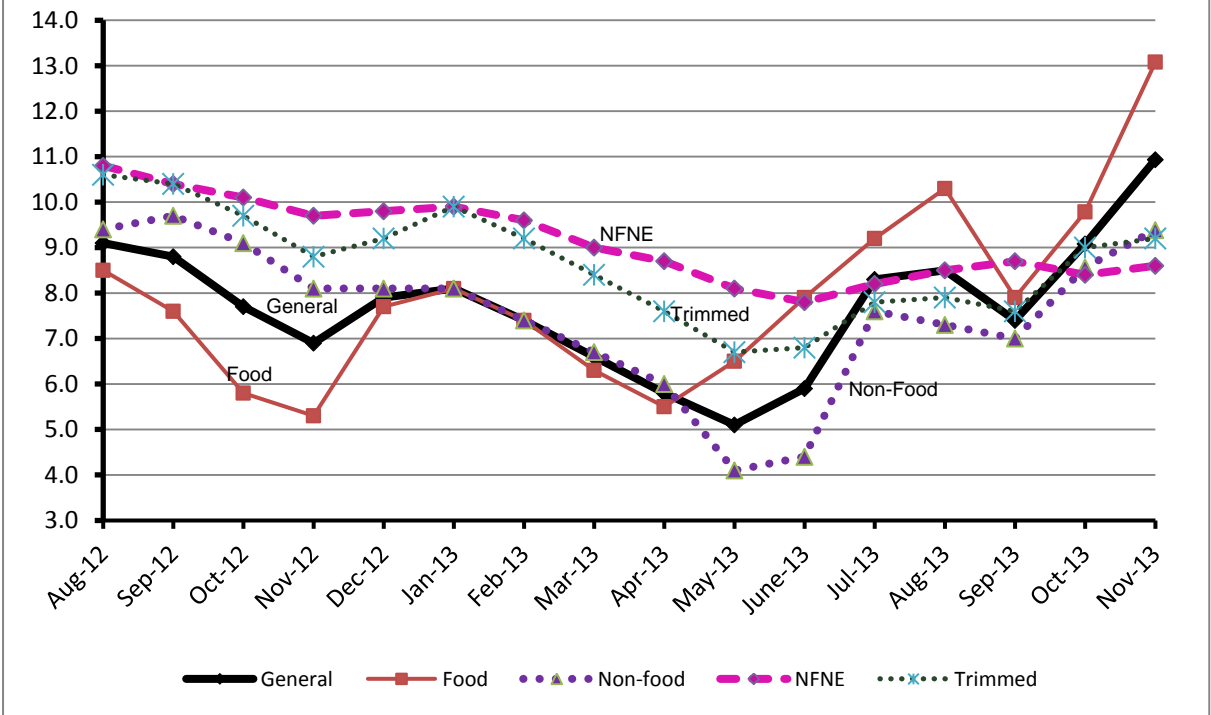
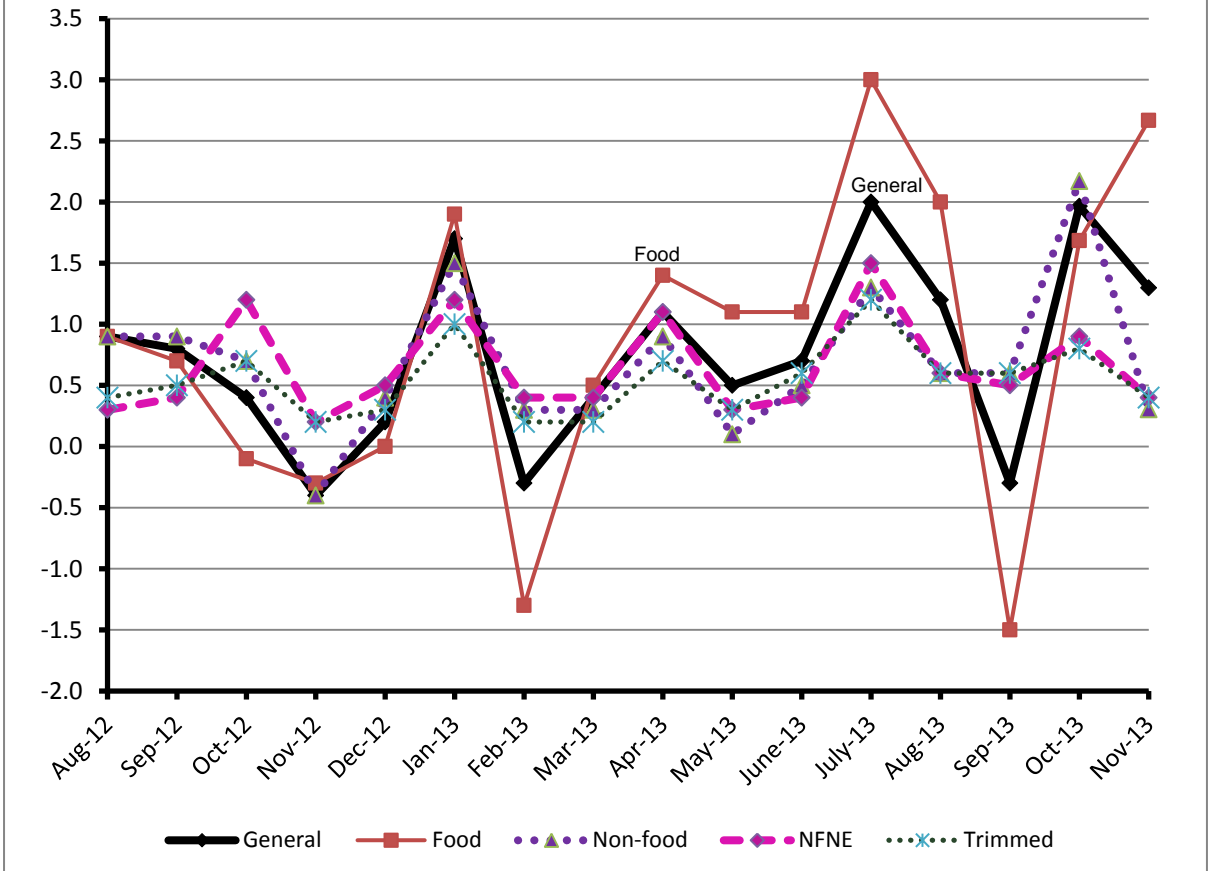


Figure 2: CPI Inflation MoM, Special Indices



II. Consumer Price Index (CPI)

The Consumer Price Index of November, 2013 has increased by 1.27% over October 2013 and increased by 10.90% over corresponding month of last year.

Table 2 : Consumer Price Index by Group of Commodities and Services (Base 2007-08)

No	Group	Group Weight (%)	Indices			% Change Nov 2013 Over		Impact (In % points) Nov 2013 Over	
			Nov 2013	Oct 2013	Nov 2012	Oct 2013	Nov 2012	Oct 2013	Nov 2012
	General	100.00	191.21	188.82	172.42	1.27	10.90	1.27	10.90
1.	Food & Non-alcoholic Bev.	34.83	217.89	211.99	192.84	2.78	12.99	1.09	5.06
	<i>Non-perishable Food Items</i>	29.84	209.14	207.13	193.52	0.97	8.07	0.32	2.70
	<i>Perishable Food Items</i>	4.99	270.20	241.05	188.77	12.09	43.14	0.77	2.36
2.	Alcoholic Bev. & Tobacco	1.41	218.24	218.25	190.69	0.00	14.45	0.00	0.23
3.	Clothing & Footwear	7.57	196.25	194.51	172.18	0.89	13.98	0.07	1.06
4.	Housing, Water, Electricity, Gas & Fuels	29.41	164.33	164.17	150.01	0.10	9.55	0.03	2.44
5.	Furnishing & Household Equipment Maintenance	4.21	194.16	192.39	178.63	0.92	8.69	0.04	0.38
6.	Health	2.19	165.73	165.15	156.08	0.35	6.18	0.01	0.12
7.	Transport	7.20	197.04	197.06	180.75	-0.01	9.01	0.00	0.68
8.	Communication	3.22	129.71	129.68	123.75	0.02	4.82	0.00	0.11
9.	Recreation & Culture	2.02	182.66	182.19	166.19	0.26	9.91	0.01	0.19
10.	Education	3.94	167.91	167.91	154.78	0.00	8.48	0.00	0.30
11.	Restaurants & Hotels	1.23	225.76	223.77	201.11	0.89	12.26	0.01	0.18
12.	Miscellaneous	2.76	209.61	208.36	200.34	0.60	4.63	0.02	0.15

Main contributors to month-on-month and year-on-year percentage changes are given below and detail is given in Annexure A.

1. **Month-on-month** Top few commodities which varied from previous month i.e. October 2013 are given below:-

Food Items Increased: Tomatoes (75.81%), Potatoes (44.51%), Onions (12.32%), Eggs (11.06%), Sugar (7.42%), Fresh vegetables (4.20%), Wheat (3.82%), Wheat Product (3.37%), Wheat Flour (2.86%), Pulse Moong (2.30%), Dry Fruits (1.68%), Nimko (1.62%), Pulse Masoor (1.24%), Gur (1.04%), Bakery & Confectionary (1.02%), and Fish (1.00%).

Decreased: Fresh Fruits (6.80%), Chicken (5.94%), Besan (1.05%), Pulse Gram (0.84%), Betel leaves & Nuts (0.55%), Tea (0.34%), Spices (0.13%), and Cooking Oil (0.12%).

Non-food Items Increased: Firewood Whole & Utensils (2.34% each), Woolen Readymade Garments (2.10%), Woolen Cloth (1.99%), Cleaning & Laundry (1.68%), Construction Input Items (1.56%), Personal Equipment's (1.21%), Construction Wage Rates (1.20%), Water Supply (1.18%), Sewing Needle & Dry Cells (1.16%), Household Textiles (1.15%), Hosiery (1.11%), Tailoring (1.02%), and Kerosene Oil (1.01%).

Decreased: Motor Fuel (0.20%).

2. **Year-on-year:** Top few commodities which varied from previous year i.e. November 2012 are given below:-

Food Items Increased: Tomatoes (216.49%), Potatoes (116.90%), Onions (72.83%), Fresh Vegetables (31.55%), Wheat (27.35%), Wheat Flour (26.48%), Gur (23.11%), Wheat Product (21.26%), Tea (16.68%), Cigarettes (14.61%), Pulse Masoor (13.47%), Beverages (12.59%), Bakery & Confectionary (12.51%), Cereals (12.34%), Readymade Food (12.26%), and Rice (12.05%).

Decreased: Pulse Gram (30.41%), Besan (28.16%), Gram Whole (22.90%), Spices (16.73%), Eggs (3.68%), Pulse Mash (2.25%), Vegetable Ghee (2.13%), Mustard Oil (1.28%), Cooking Oil (0.97%), and Fresh Fruits (0.31%).

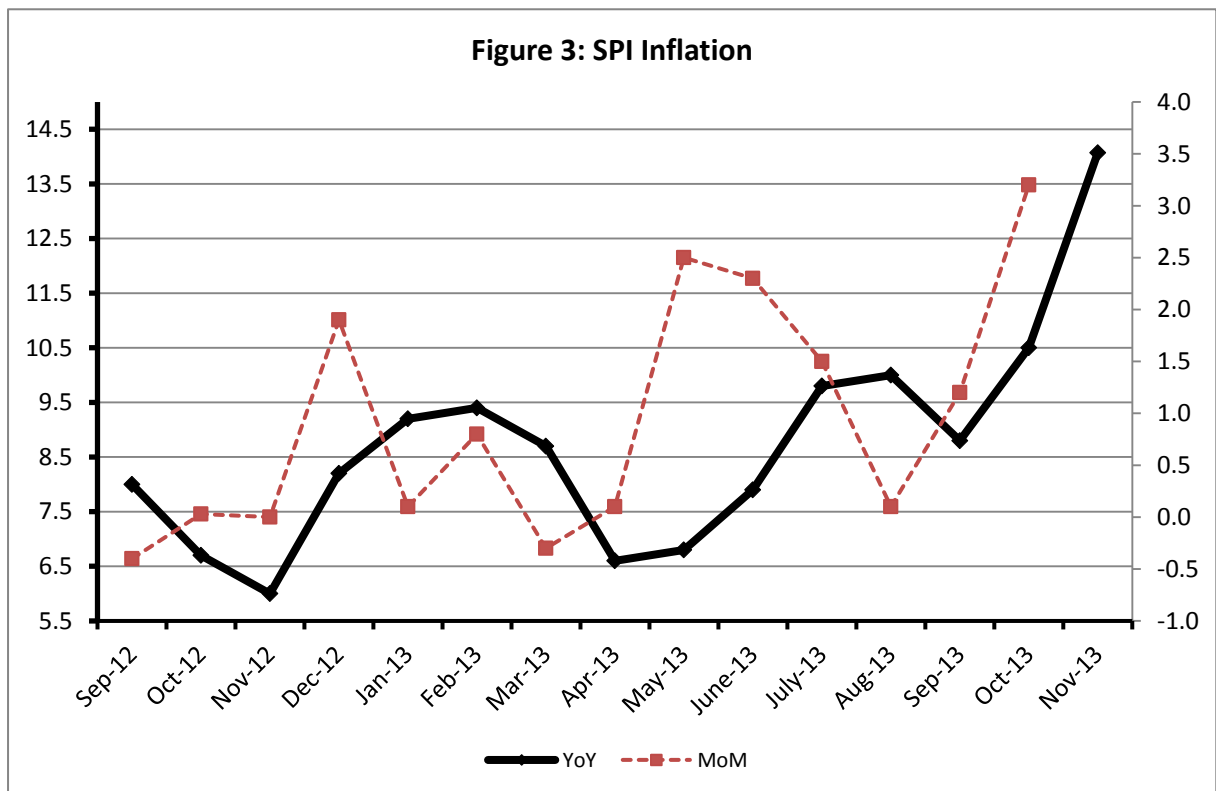
Non-food Items Increased: Postal Services (24.60%), Footwear (18.44%), Cosmetics (16.61%), Text Books (16.02%), Electricity (15.82%), Tailoring (14.87%), Cotton Cloth (14.05%), Sewing Needle & Dry Cell (13.70%), Motor Fuel (12.83%), Woolen Readymade Garments (12.81%), Dopatta (12.77%), Cleaning & Laundry (12.33%), Readymade Garments (12.27%), Woolen Cloth (12.01%), Doctor MBBS Clinic Fee (11.79%), and Construction Wage Rates (11.61%).

Decreased: Personal Equipment's (1.11%).

III. Sensitive Price Indicator

Quintile-wise percentage changes YoY and MoM are given below in Table 3. The series from September 2012 to November 2013 is also graphed below in Figure 3.

Table 3 : Sensitive Price Indicator (Base 2007-08)					
Quintiles	Indices			% Change Nov 2013 over	
	Nov 2013	Oct 2013	Nov 2012	Oct 2013	Nov 2012
1	207.40	200.93	181.82	3.23	14.07
2	212.58	206.51	188.00	2.94	13.08
3	215.92	207.95	186.79	3.83	15.60
4	217.42	209.53	188.03	3.77	15.63
5	215.13	208.61	188.57	3.13	14.08
Combined	214.76	207.69	187.35	3.40	14.63



IV. Wholesale Price Index

The Wholesale Price Index for November 2013 increased by 0.25% over October 2013. It is increased by 10.44% over the corresponding month of the last year. YoY and MoM movements, from October 2012 to November 2013 are also graphed below in Figure 4.

Table 4 : Wholesale Price Index by Group of Commodities (Base 2007-08)									
No.	Group	Group Weight (%)	Indices			% Change Nov 2013 over		Impact (in %age points) Nov 2013 over	
			Nov 2013	Oct 2013	Nov 2012	Oct 2013	Nov 2012	Oct 2013	Nov 2012
	General	100.00	212.22	211.70	192.16	0.25	10.44	0.25	10.44
1.	Agriculture, Forestry & Fishery Products	25.77	220.76	220.96	189.19	-0.09	16.69	-0.02	4.23
2.	Ores & Minerals, Electricity, Gas & Water	12.04	243.77	243.64	207.85	0.05	17.28	0.01	2.25
3.	Food Products, Beverages & Tobacco, Textiles, Apparel & Leather Products	31.11	201.99	200.96	187.56	0.51	7.69	0.15	2.34
	i. Food Products, Bev. & Tobacco	20.07	203.92	202.24	191.26	0.83	6.62	0.16	1.32
	ii. Textiles and Apparel	10.33	199.01	199.57	185.12	-0.28	7.50	-0.03	0.75
	iii. Leather Products	0.71	190.96	184.76	118.56	3.36	61.07	0.02	0.27
4.	Other Transportable Goods except Metal Products, Machinery & Equipment	22.37	216.87	216.28	206.43	0.27	5.06	0.06	1.21
5.	Metal Products, Machinery & Equipment	8.72	168.01	166.77	159.04	0.74	5.64	0.05	0.41

Main contributors to month-on-month and year-on-year percentage changes are given below and detail is given in Annexure B.

1. **Month-on-month** Top few commodities which varied from previous month i.e. October 2013 are given below:-

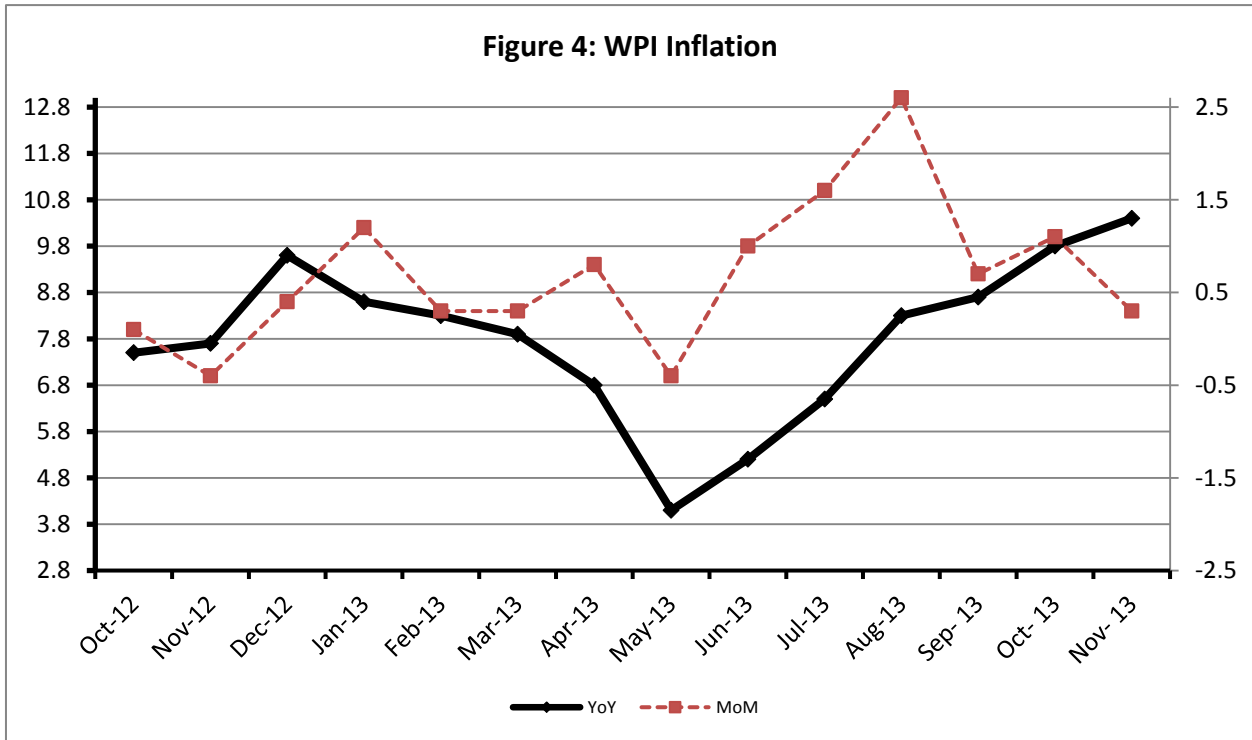
Increased: Potatoes (53.02%), Tractors (13.82%), Eggs (13.31%), Cultivators (13.25%), Lathe Machines (12.23%), Vegetables (10.22%), Stimulants and Spice Crops (5.25%), Sugar (5.14%), Other Leather NEC (4.73%), Motor Vehicles (4.34%), Wheat (4.27%), Other Glass Articles (3.78%), Pipe fittings (3.55%), Blankets (3.42%), Woven fabrics(2.99%), Fridge, Washing Machines (2.95%), Leather without hair (2.88%), Woolen carpets (2.79%), Dry fruits (2.60%), Chemicals (2.38%), Dyeing materials (2.11%), Timber (1.85%), Wheat flour (1.83%), Other oil seeds (1.74%), Pulses (1.65%), Spices (1.57%), Bed sheets(1.54%), Milk and cream in solid form (1.53%), Fuel woods (1.36%), Hosiery products (1.32%), Bricks blocks & tiles (1.14%), Bed foam (1.12%) and synthetic carpets (1.12%).

Decreased: Fresh fruits (12.18%), Poultry (7.92%), Fibre crops (5.83%), Bajra (3.29%), Other Cereal flour (1.87%), Maize (1.7%) and Nylon yarn (1.02%).

2. Year-on-year Top few commodities which varied from previous year i.e. November, 2012 are given below:-

Increased: Potatoes (150.92%), Other Leather N.E.C (125.41%), Vegetables (64.60%), Stimulants and Spice Crops (54.15%), Fresh fruits (49.14%), Fish (41.39%) and Jowar (39.70%).

Decreased: Spices (35.91%), other Cereal Flour (35.27%), Pulses (15.47%), and Hard Board (10.43%).



Annexure A: Consumer Price Index Numbers by Commodity Groups & Commodities (2007-2008=100)

Item and Specification	Weight	Index Numbers			% Change in Nov 2013 over			
		Nov 13	Oct 13	Nov 12	Oct 2013	Nov 2012		
General	100.0000	191.21	188.82	172.42	+	1.27	+	10.90
Food & Non-alcoholic Beverage	34.8343	217.89	211.99	192.84	+	2.78	+	12.99
01 Wheat	0.3477	220.58	212.47	173.21	+	3.82	+	27.35
02 Wheat Flour	4.1648	227.82	221.49	180.13	+	2.86	+	26.48
03 Wheat Product	0.0959	210.03	203.19	173.21	+	3.37	+	21.26
04 Besan	0.1500	169.37	171.16	235.75	-	1.05	-	28.16
05 Rice	1.5821	192.63	192.27	171.92	+	0.19	+	12.05
06 Cereals	0.1563	228.10	227.50	203.04	+	0.26	+	12.34
07 Bakery & Confectionary	1.1550	195.75	193.77	173.99	+	1.02	+	12.51
08 Nimco	0.4574	217.02	213.57	197.49	+	1.62	+	9.89
09 Meat	2.4303	228.77	228.63	218.77	+	0.06	+	4.57
10 Chicken	1.3596	162.43	172.68	155.34	-	5.94	+	4.56
11 Fish	0.2970	210.55	208.46	193.18	+	1.00	+	8.99
12 Milk Fresh	6.6800	231.57	230.76	217.36	+	0.35	+	6.54
13 Milk Products	0.6338	226.42	225.47	209.90	+	0.42	+	7.87
14 Milk Powder	0.1129	198.67	197.75	184.27	+	0.47	+	7.81
15 Eggs	0.4555	220.88	198.88	229.32	+	11.06	-	3.68
16 Mustard Oil	0.0952	158.69	157.41	160.75	+	0.81	-	1.28
17 Cooking Oil	1.7538	161.02	161.21	162.59	-	0.12	-	0.97
18 Vegetable Ghee	2.0714	157.09	156.04	160.51	+	0.67	-	2.13
19 Dry Fruits	0.2543	225.01	221.30	204.95	+	1.68	+	9.79
20 Fresh Fruits	1.8649	181.97	195.24	182.54	-	6.80	-	0.31
21 Pulse Masoor	0.2712	161.86	159.87	142.64	+	1.24	+	13.47
22 Pulse Moong	0.2336	238.17	232.81	215.42	+	2.30	+	10.56
23 Pulse Mash (Washed)	0.2098	188.64	187.13	192.99	+	0.81	-	2.25
24 Pulse Gram	0.2361	162.33	163.71	233.27	-	0.84	-	30.41
25 Gram Whole	0.1616	175.32	174.43	227.39	+	0.51	-	22.90
26 Beans	0.0269	235.84	234.82	214.27	+	0.43	+	10.07
27 Potatoes	0.4416	426.51	295.14	196.64	+	44.51	+	116.90
28 Onion	0.5057	362.39	322.63	209.68	+	12.32	+	72.83
29 Tomatoes	0.4136	412.96	234.89	130.48	+	75.81	+	216.49
30 Fresh Vegetables	1.7651	264.46	253.79	201.04	+	4.20	+	31.55
31 Sugar	1.0445	215.52	200.64	195.25	+	7.42	+	10.38
32 Gur	0.0220	278.99	276.11	226.61	+	1.04	+	23.11
33 Honey	0.0446	262.05	260.63	252.31	+	0.54	+	3.86
34 SweetMeat	0.2483	221.10	218.95	205.11	+	0.98	+	7.80
35 Beverages	1.1990	189.74	188.18	168.53	+	0.83	+	12.59
36 Jam, Tomato Ketchup & Pickles	0.2454	189.16	188.91	178.86	+	0.13	+	5.76
37 Condiments	0.2656	222.38	220.82	212.58	+	0.71	+	4.61
38 Spices	0.5441	214.54	214.81	257.64	-	0.13	-	16.73
39 Tea	0.8377	253.04	253.90	216.87	-	0.34	+	16.68
Alcoholic Beverages, Tobacco	1.4135	218.24	218.25	190.69	+	0.00	+	14.45
40 Cigarettes	1.3906	218.68	218.68	190.81	+	0.00	+	14.61
41 Betel Leaves & Nuts	0.0229	191.56	192.62	183.14	-	0.55	+	4.60
Clothing & Footwear	7.5708	196.25	194.51	172.18	+	0.89	+	13.98
42 Cotton Cloth	1.7286	182.05	181.33	159.62	+	0.40	+	14.05
43 Woolen Cloth	0.8759	215.22	211.03	192.14	+	1.99	+	12.01
44 Readymade Garments	0.9739	194.06	192.61	172.85	+	0.75	+	12.27
45 Woolen Readymade Garments	0.3964	200.23	196.12	177.50	+	2.10	+	12.81
46 Hosiery	0.5094	203.32	201.09	183.58	+	1.11	+	10.75
47 Dopatta	0.4412	212.53	210.56	188.47	+	0.94	+	12.77
48 Cleaning and Laundry	0.2110	216.66	213.08	192.87	+	1.68	+	12.33
49 Tailoring	0.8840	235.52	233.15	205.03	+	1.02	+	14.87
50 Footwear	1.5504	169.58	169.38	143.18	+	0.12	+	18.44
Housing, Water, Elec., Gas, Other	29.4149	164.33	164.17	150.01	+	0.10	+	9.55
51 House Rent	21.8149	150.59	150.59	139.61	+	0.00	+	7.86
52 Construction Input Items	0.5623	221.73	218.32	202.11	+	1.56	+	9.71
53 Construction Wage Rates	0.3331	191.07	188.80	171.19	+	1.20	+	11.61
54 Water Supply	0.4971	147.52	145.80	133.23	+	1.18	+	10.73
55 Electricity	4.3985	227.44	227.44	196.37	+	0.00	+	15.82

Annexure A: Consumer Price Index Numbers by Commodity Groups & Commodities (2007-2008=100)

Item and Specification	Weight	Index Numbers			% Change in Nov 2013 over	
		Nov 13	Oct 13	Nov 12	Oct 2013	Nov 2012
56 Gas	1.5756	143.81	143.81	134.34	+ 0.00	+ 7.05
57 Kerosene Oil	0.0057	296.65	293.68	275.18	+ 1.01	+ 7.80
58 Firewood Whole	0.2277	256.78	250.91	233.33	+ 2.34	+ 10.05
Furnished H.Hold Equip.& Hous	4.2082	194.16	192.39	178.63	+ 0.92	+ 8.69
59 Furniture	0.3315	183.52	182.22	168.01	+ 0.71	+ 9.23
60 Household Textiles	0.6489	190.35	188.19	175.00	+ 1.15	+ 8.77
61 Household Equipment	0.5936	165.35	164.21	157.13	+ 0.69	+ 5.23
62 Utensils	0.3212	195.29	190.82	176.06	+ 2.34	+ 10.92
63 Plastic Products	0.2547	189.62	187.78	175.06	+ 0.98	+ 8.32
64 Washing Soaps & Detergents	0.7893	212.44	211.38	194.15	+ 0.50	+ 9.42
65 Sewing Needle & Dr Cell	0.1496	172.30	170.32	151.54	+ 1.16	+ 13.70
66 Household Servant	1.0432	205.48	203.63	189.23	+ 0.91	+ 8.59
67 Marriage Hall Charges	0.0762	206.52	206.52	193.11	+ 0.00	+ 6.94
Health	2.1868	165.73	165.15	156.08	+ 0.35	+ 6.18
68 Drugs & Medicines	1.2667	142.19	142.10	138.28	+ 0.06	+ 2.83
69 Medical Equipments	0.0080	209.63	208.73	196.91	+ 0.43	+ 6.46
70 Doctor (MBBS) Clinic Fee	0.5904	216.61	214.87	193.76	+ 0.81	+ 11.79
71 Medical Tests	0.3217	163.95	163.57	156.00	+ 0.23	+ 5.10
Transport	7.2023	197.04	197.06	180.75	- 0.01	+ 9.01
72 Motor Vehicles	0.6630	160.81	160.39	152.84	+ 0.26	+ 5.21
73 Motor Vehicle Accessories	0.2439	221.31	220.01	206.89	+ 0.59	+ 6.97
74 Motor Fuel	3.0269	194.85	195.25	172.69	- 0.20	+ 12.83
75 Mechanical Service	0.4552	197.52	196.39	182.81	+ 0.58	+ 8.05
76 Motor Vehicle Tax	0.1099	153.74	153.74	152.02	+ 0.00	+ 1.13
77 Transport Services	2.7034	207.87	207.87	195.09	+ 0.00	+ 6.55
Communication	3.2198	129.71	129.68	123.75	+ 0.02	+ 4.82
78 Postal Services	0.0662	215.89	215.89	173.27	+ 0.00	+ 24.60
79 Communication & Apparatus	3.1536	127.90	127.87	122.71	+ 0.02	+ 4.23
Recreation & Culture	2.0227	182.66	182.19	166.19	+ 0.26	+ 9.91
80 Recreation & Culture	0.8634	126.38	125.46	122.25	+ 0.73	+ 3.38
81 Text Books	0.5706	267.10	267.10	230.22	+ 0.00	+ 16.02
82 Newspapers	0.1934	170.49	170.49	155.91	+ 0.00	+ 9.35
83 Stationery	0.3953	189.69	189.24	174.73	+ 0.24	+ 8.56
Education	3.9431	167.91	167.91	154.78	+ 0.00	+ 8.48
84 Education	3.9431	167.91	167.91	154.78	+ 0.00	+ 8.48
Restaurants & Hotels	1.2286	225.76	223.77	201.11	+ 0.89	+ 12.26
85 Readymade Food	1.2286	225.76	223.77	201.11	+ 0.89	+ 12.26
Miscellaneous Goods & Service	2.7550	209.61	208.36	200.34	+ 0.60	+ 4.63
86 Personal Care	1.4935	191.32	190.82	179.17	+ 0.26	+ 6.78
87 Cosmetics	0.3853	174.38	174.26	149.54	+ 0.07	+ 16.61
88 Blades	0.0322	180.83	180.16	172.39	+ 0.37	+ 4.90
89 Personal Equipments	0.8440	259.16	256.05	262.07	+ 1.21	- 1.11

Annexure B: Wholesale Price Indices by Major Groups & Commodities

(2007-2008=100)

Item and Specification	Weight	Index Numbers			% Change in Nov 2013 over			
		Nov 13	Oct 13 12	Nov	Oct 2013	Nov 2012		
General	100.0000	212.22	211.70	192.16	+	0.25	+	10.44
Agriculture Forestry & Fisher	25.7674	220.76	220.96	189.19	-	0.09	+	16.69
001 Wheat	0.6297	231.90	222.41	181.31	+	4.27	+	27.90
002 Maize	0.6764	178.94	182.03	161.45	-	1.70	+	10.83
003 Rice	2.4413	176.47	174.66	163.85	+	1.04	+	7.70
004 Sorghum / Jowar	0.0214	263.55	263.80	188.66	-	0.09	+	39.70
005 Millet / Bajra	0.0374	179.40	185.50	156.89	-	3.29	+	14.35
006 Vegetables	1.2441	367.68	333.60	223.38	+	10.22	+	64.60
007 Fresh Fruits	1.5144	194.51	221.48	130.42	-	12.18	+	49.14
008 Dry Fruits	0.2478	197.11	192.11	175.06	+	2.60	+	12.60
009 Cotton Seeds	1.1511	168.77	168.29	170.85	+	0.29	-	1.22
010 Other Oil Seeds	0.0722	178.95	175.89	183.21	+	1.74	-	2.33
011 Edible Roots / Potatoes	0.2540	472.04	308.49	188.12	+	53.02	+	150.92
012 Stimulant & Spice Crops	0.1634	275.65	261.90	178.82	+	5.25	+	54.15
013 Pulses	0.4901	178.53	175.64	211.21	+	1.65	-	15.47
014 Sugar Crops	1.0725	267.92	267.92	267.92	+	0.00	+	0.00
015 Fibre Crops	5.3169	212.61	225.78	177.87	-	5.83	+	19.53
016 Unmanufactured Tobacco	0.0742	181.11	181.07	169.08	+	0.02	+	7.11
017 Poultry	0.5633	159.59	173.31	153.87	-	7.92	+	3.72
018 Raw Milk from Bovine Animals	7.0279	223.35	223.35	213.76	+	0.00	+	4.49
019 Eggs	0.5034	230.34	203.29	233.24	+	13.31	-	1.24
020 Raw Animal Materials / Wool	0.0351	153.55	153.55	137.58	+	0.00	+	11.61
021 Hides & Fur Skins, Raw	0.4834	145.71	144.43	138.71	+	0.89	+	5.05
022 Fuel Wood in Logs	0.0179	236.04	232.88	208.63	+	1.36	+	13.14
023 Fish Live Fresh or Chilled	1.7295	249.22	248.24	176.27	+	0.39	+	41.39
Ores/Minerals, Elec., Gas & W	12.0389	243.77	243.64	207.85	+	0.05	+	17.28
024 Coal not Agglomerated	0.7508	223.53	223.53	196.08	+	0.00	+	14.00
025 Natural Gas Liquified	5.7385	204.91	204.63	192.37	+	0.14	+	6.52
026 Salt & Pure Sodium Chloride	0.0584	217.04	217.04	164.54	+	0.00	+	31.91
027 Electrical Energy	5.4912	287.44	287.44	226.10	+	0.00	+	27.13
Food, Beverages, Tobacco, Textil	31.1122	201.99	200.96	187.56	+	0.51	+	7.69
Food Products, Beverages &	20.0718	203.92	202.24	191.26	+	0.83	+	6.62
028 Meat of Animals	3.4559	239.95	239.95	227.09	+	0.00	+	5.66
029 Vegetables & Fruit Juice	0.0058	192.59	192.05	187.55	+	0.28	+	2.69
030 Dried Fruits & Nuts	0.1733	224.54	223.95	221.39	+	0.26	+	1.42
031 Fruit Juices	0.3880	165.29	165.10	157.66	+	0.12	+	4.84
032 Vegetable Oils Refined	1.9242	160.83	160.07	154.80	+	0.47	+	3.90
033 Vegetable Ghee	1.5632	141.61	140.53	139.91	+	0.77	+	1.22
034 Oil Cakes	0.9611	181.80	181.08	175.06	+	0.40	+	3.85
035 Processed Liquid Milk	4.4437	205.54	205.54	208.43	+	0.00	-	1.39
036 Milk & Cream in Solid Form	0.0316	190.96	188.09	171.16	+	1.53	+	11.57
037 Ice Cream	0.0047	209.79	209.79	167.68	+	0.00	+	25.11
038 Dairy Products N.E.C	0.0117	217.26	217.26	204.91	+	0.00	+	6.03
039 Wheat Flour	2.3034	209.15	205.40	166.05	+	1.83	+	25.96
040 Other Cereal Flour	0.0604	132.04	134.55	203.99	-	1.87	-	35.27
041 Sugar Refined	1.7975	229.71	218.48	205.06	+	5.14	+	12.02
042 Chocolate	0.0139	99.19	99.19	99.19	+	0.00	+	0.00
043 Sugar Confectionary	0.0738	102.28	102.28	100.40	+	0.00	+	1.87
044 Coffee & Tea	0.7303	229.47	230.00	198.68	-	0.23	+	15.50
045 Spices	0.1449	194.28	191.28	303.12	+	1.57	-	35.91
046 Other Food Products	0.0336	308.23	308.23	323.46	+	0.00	-	4.71
047 Mineral Water	0.0207	181.84	181.84	168.32	+	0.00	+	8.03
048 Beverages	0.6303	150.11	148.83	137.86	+	0.86	+	8.89
049 Tobacco Products	1.2998	242.41	242.41	208.80	+	0.00	+	16.10
Textiles & Apparels	10.3289	199.01	199.57	185.12	-	0.28	+	7.50
050 Cotton Yarn	5.2491	221.66	223.38	207.49	-	0.77	+	6.83
051 Nylon Yarn	0.1719	181.73	183.61	177.24	-	1.02	+	2.53
052 Blended Yarn	0.1689	201.89	202.06	188.63	-	0.08	+	7.03
053 Woven Fabrics	0.0128	224.64	218.12	196.74	+	2.99	+	14.18
054 Cotton Fabrics	0.6343	187.77	187.77	174.17	+	0.00	+	7.81
055 Other Fabrics	1.1016	179.06	178.98	165.62	+	0.04	+	8.11
056 Silk & Reyon Fabrics	0.7350	161.09	160.48	154.01	+	0.38	+	4.60

Annexure B: Wholesale Price Indices by Major Groups & Commodities

(2007-2008=100)

Item and Specification	Weight	Index Numbers			% Change in Nov 2013 over			
		Nov 13	Oct 13 12	Nov	Oct 2013	Nov 2012		
057 Towels	0.1235	233.85	231.87	203.06	+	0.85	+	15.16
058 Blankets	0.0029	196.10	189.62	178.52	+	3.42	+	9.85
059 Bed Sheets	0.0913	227.19	223.74	197.94	+	1.54	+	14.78
060 Quilts	0.0019	160.74	160.74	149.37	+	0.00	+	7.61
061 Woolen Carpets	0.0383	109.52	106.55	106.55	+	2.79	+	2.79
062 Synthetic Carpets	0.0566	115.69	114.41	113.15	+	1.12	+	2.24
063 Hosiery Products	0.8832	187.81	185.37	175.07	+	1.32	+	7.28
064 Readymade Garments	1.0576	153.12	153.12	135.15	+	0.00	+	13.30
Leather Products	0.7115	190.96	184.76	118.56	+	3.36	+	61.07
065 Leather Without Hair	0.2973	144.55	140.50	109.83	+	2.88	+	31.61
066 Other Leather N.E.C	0.2567	276.28	263.79	122.57	+	4.73	+	<u>125.41</u>
067 Footwear	0.1575	139.49	139.49	128.50	+	0.00	+	8.55
Other Transportable Goods	22.3659	216.87	216.28	206.43	+	0.27	+	5.06
068 Timber	0.0165	166.37	163.35	148.23	+	1.85	+	12.24
069 Printing Paper	0.4279	167.02	167.02	152.93	+	0.00	+	9.21
070 Hard Board	0.1579	214.58	214.58	239.58	+	0.00	-	10.43
071 Coke	0.2797	163.45	163.45	163.45	+	0.00	+	0.00
072 Motor Spirit	1.5336	190.50	191.35	172.08	-	0.44	+	10.70
073 Diesel Oil	5.2664	279.46	279.68	265.58	-	0.08	+	5.23
074 Kerosene Oil	0.2151	288.01	288.36	269.61	-	0.12	+	6.82
075 Furnace Oil	3.2664	184.52	182.48	172.69	+	1.12	+	6.85
076 Mobil Oil	0.7114	193.09	193.09	182.64	+	0.00	+	5.72
077 Chemicals	1.7720	169.65	165.70	153.56	+	2.38	+	10.48
078 Dyeing Material	0.1539	106.46	104.26	104.26	+	2.11	+	2.11
079 Fertilizers	2.8657	263.88	264.71	266.79	-	0.31	-	1.09
080 Pesticides	0.2763	224.99	222.93	197.49	+	0.92	+	13.92
081 Insecticides	0.1276	131.04	131.09	131.43	-	0.04	-	0.30
082 Paints & Varnishes	0.1916	249.49	249.49	237.48	+	0.00	+	5.06
083 Medicines	1.1428	138.77	138.77	139.50	+	0.00	-	0.52
084 Soaps & Detergents	0.8168	178.85	178.79	168.45	+	0.03	+	6.17
085 Auto Tyres	0.2703	185.73	185.57	180.73	+	0.09	+	2.77
086 Plastic Products	0.4550	200.86	199.24	191.35	+	0.81	+	4.97
087 Glass sheets	0.2089	206.90	205.47	190.93	+	0.70	+	8.36
088 Other Glass Articles	0.1635	213.87	206.09	191.72	+	3.78	+	11.55
089 Ceramics & Sanitary Fixture	0.0244	171.02	170.85	157.32	+	0.10	+	8.71
090 Bricks, Blocks & Tiles	0.1566	194.89	192.69	172.40	+	1.14	+	13.05
091 Cement	1.8145	200.84	200.39	187.15	+	0.22	+	7.31
092 Bed Foam	0.0006	149.33	147.67	140.67	+	1.12	+	6.16
093 Matches	0.0505	143.20	143.20	133.50	+	0.00	+	7.27
Metal Product, Machinery & Eq	8.7156	168.01	166.77	159.04	+	0.74	+	5.64
094 Pig Iron	0.0593	128.97	128.97	128.97	+	0.00	+	0.00
095 Steel Bar & Sheets	1.4022	140.55	141.14	133.72	-	0.42	+	5.11
096 Pipe Fittings	0.0780	166.34	160.63	141.47	+	3.55	+	17.58
097 Steel Products	0.3879	170.08	168.46	161.94	+	0.96	+	5.03
098 Engines & Motors	0.0046	109.07	109.07	109.07	+	0.00	+	0.00
099 Vacuum Pumps	0.0155	115.39	115.39	115.39	+	0.00	+	0.00
100 Air Conditioners	0.0049	181.12	181.12	172.67	+	0.00	+	4.89
101 Cultivators	0.0551	226.90	200.36	189.23	+	13.25	+	19.91
102 Chuff Cutter	0.1293	144.94	144.94	138.54	+	0.00	+	4.62
103 Tractors	0.0028	193.29	169.82	161.96	+	13.82	+	19.34
104 Lathe Machines	0.0525	174.96	155.90	147.68	+	12.23	+	18.47
105 Concrete Mixture	0.0107	138.83	138.83	138.83	+	0.00	+	0.00
106 Fridge, WashM, SewM, Fans, Iron	1.1645	186.98	181.62	165.38	+	2.95	+	13.06
107 Electric Wires	0.0912	169.09	168.13	159.57	+	0.57	+	5.97
108 Lighting Equipments	1.4431	163.43	162.52	148.10	+	0.56	+	10.35
109 Radio & Television	0.1843	126.49	126.49	126.46	+	0.00	+	0.02
110 Motor Vehicles	0.0244	181.77	174.21	167.70	+	4.34	+	8.39
111 Motorcycles	0.2570	125.41	124.80	125.19	+	0.49	+	0.18
112 Bicycles	3.3483	180.99	180.99	177.87	+	0.00	+	1.75