



Monthly Review on Price Indices



December, 2012
(Base 2007-08)

Government of Pakistan
Statistics Division
Pakistan Bureau of Statistics
Islamabad

Inflation in Brief

1. CPI inflation, General, increased by 7.9% on year-on-year basis in December 2012 as compared to 6.9% in the previous month and 9.7% in December 2011. On month-on-month basis, it increased by 0.2% in December 2012 as compared a decrease of 0.4% in the previous month and a decrease of 0.7% in December 2011.
2. Core inflation measured by non-food non-energy CPI (Core NFNE) increased by 9.8% in December 2012 as compared to 9.7% in November 2012 (YoY) and by 10.1% in December 2011. Core NFNE inflation on MoM basis increased by 0.5% in December 2012 as compared to 0.2% a month earlier and 0.4% in December 2011.
3. Core inflation, measured by 20% weighted trimmed mean CPI (Core Trimmed) increased by 9.2% in December 2012 and by 8.8% in November 2012 (YoY) which increased by 10.5% in December 2011. Core Trimmed inflation has increased by 0.3% on MoM basis in December 2012 as compared to 0.2% in November 2012 which increased by 0.3% in December 2011.
4. SPI inflation on YoY basis increased by 8.2% in December 2012 compared with 6.0% a month earlier and 3.0% in December 2011. On MoM basis, it increased by 0.05% in December 2012 as compared to an increase of 0.03% a month earlier and decreased by 2.0% in December 2011.
5. WPI inflation on YoY basis increased to 9.6% in December 2012 compared with 7.7% a month earlier and 8.3% in December 2011. WPI inflation on MoM basis increased by 0.4% in December 2012 as compared to a decrease of 0.4% a month earlier and decreased by 1.3% in December 2011.
6. Figures 1 and 2 show graphically the data of Table 1. Table 1.1 shows "Period Average" and "YoY" percent changes in indices of three years.

Table 1: Inflation (%) (Base 2007-08)

| Period | CPI | | | | | | Core Inflation | | | | SPI** | | WPI | |
|--------|---------|------|------|------------------|----------|------|----------------|-----|---------|-----|-------|------------------|------|------|
| | General | | Food | | Non-food | | NFNE* | | Trimmed | | YoY | MoM | YoY | MoM |
| | YoY | MoM | YoY | MoM | YoY | MoM | YoY | MoM | YoY | MoM | | | | |
| Nov 11 | 10.2 | 0.3 | 10.0 | 0.1 | 10.3 | 0.4 | 10.4 | 0.6 | 11.5 | 0.5 | 3.8 | 0.7 | 12.0 | -0.5 |
| Dec 11 | 9.7 | -0.7 | 9.5 | -2.2 | 9.9 | 0.4 | 10.1 | 0.4 | 10.5 | 0.3 | 3.0 | -2.0 | 8.3 | -1.3 |
| Jan 12 | 10.1 | 1.5 | 9.2 | 1.5 | 10.7 | 1.6 | 10.2 | 1.1 | 10.4 | 0.8 | 3.9 | 1.0 | 8.7 | 2.3 |
| Feb 12 | 11.0 | 0.3 | 10.5 | -0.7 | 11.5 | 1.0 | 10.6 | 0.7 | 10.7 | 0.5 | 5.2 | -0.1 | 7.2 | 0.6 |
| Mar 12 | 10.8 | 1.2 | 9.8 | 1.5 | 11.5 | 0.9 | 10.8 | 1.0 | 10.5 | 0.8 | 6.1 | 1.5 | 4.5 | 0.7 |
| Apr 12 | 11.3 | 1.8 | 10.7 | 2.2 | 11.6 | 1.6 | 10.8 | 1.4 | 11.0 | 1.3 | 7.5 | 1.7 | 3.8 | 1.8 |
| May 12 | 12.3 | 1.1 | 11.3 | 0.2 | 13.1 | 1.9 | 11.1 | 0.8 | 11.7 | 0.5 | 8.1 | -0.1 | 7.1 | 2.1 |
| Jun 12 | 11.3 | 0.0 | 10.3 | -0.2 | 12.0 | 0.2 | 11.4 | 0.7 | 11.1 | 0.5 | 9.7 | 1.4 | 6.4 | 0.0 |
| Jul 12 | 9.6 | -0.2 | 9.1 | 1.8 | 10.0 | -1.7 | 11.3 | 1.0 | 10.7 | 0.7 | 7.7 | 0.5 | 7.2 | 0.4 |
| Aug 12 | 9.1 | 0.9 | 8.5 | 0.9 | 9.4 | 0.9 | 10.8 | 0.3 | 10.6 | 0.4 | 8.2 | 1.3 | 7.7 | 1.0 |
| Sep 12 | 8.8 | 0.8 | 7.6 | 0.7 | 9.7 | 0.9 | 10.4 | 0.4 | 10.4 | 0.5 | 8.0 | 1.2 | 7.8 | 0.3 |
| Oct 12 | 7.7 | 0.4 | 5.8 | -0.1 | 9.1 | 0.7 | 10.1 | 1.2 | 9.7 | 0.7 | 6.7 | -0.4 | 7.5 | 0.1 |
| Nov 12 | 6.9 | -0.4 | 5.3 | -0.3 | 8.1 | -0.4 | 9.7 | 0.2 | 8.8 | 0.2 | 6.0 | 0.0 ¹ | 7.7 | -0.4 |
| Dec 12 | 7.9 | 0.2 | 7.7 | 0.0 ² | 8.1 | 0.4 | 9.8 | 0.5 | 9.2 | 0.3 | 8.2 | 0.0 ³ | 9.6 | 0.4 |

*NFNE is non-food non-energy, ** SPI for quintile 1 ,

² Actual figure is 0.04, displayed in rounded figure ,

¹ Actual figure is 0.03, displayed in rounded figure

³ Actual figure is 0.05, displayed in rounded figure

Table 1.1 : Period Average and YoY % Changes of Indices (Base 2007-08)

| Index | Averages July-December % Changes | | | December over December % Changes | | |
|-------|----------------------------------|---------|---------|----------------------------------|---------|---------|
| | 2012-13 | 2011-12 | 2010-11 | 2012-13 | 2011-12 | 2010-11 |
| CPI | 8.32 | 10.87 | 14.32 | 7.93 | 9.75 | 15.45 |
| SPI | 7.46 | 7.42 | 18.56 | 8.22 | 2.99 | 21.11 |
| WPI | 7.94 | 15.14 | 19.47 | 9.64 | 8.32 | 22.50 |

Figure 1: CPI Inflation YoY, Special Indices

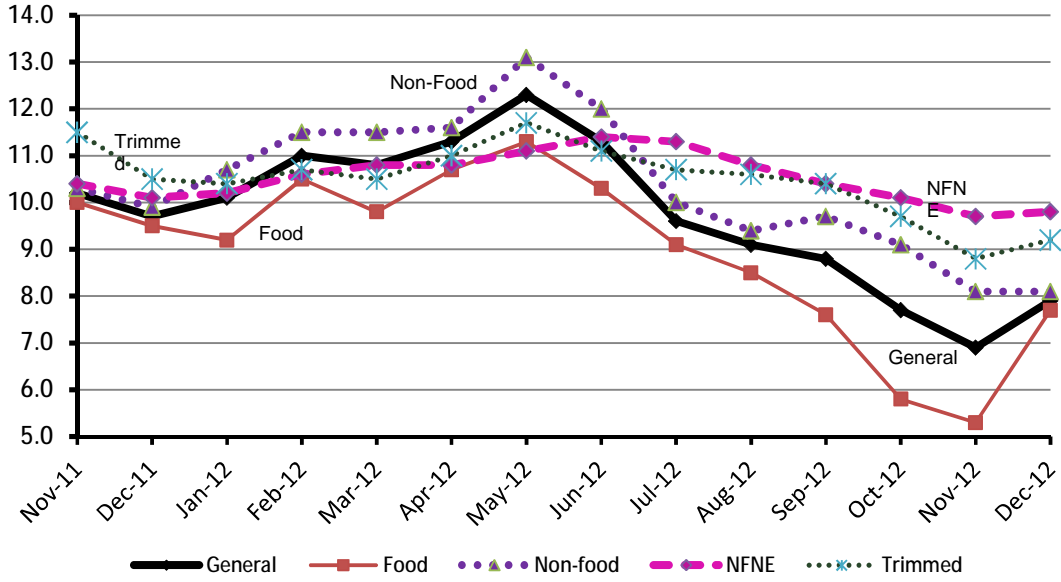
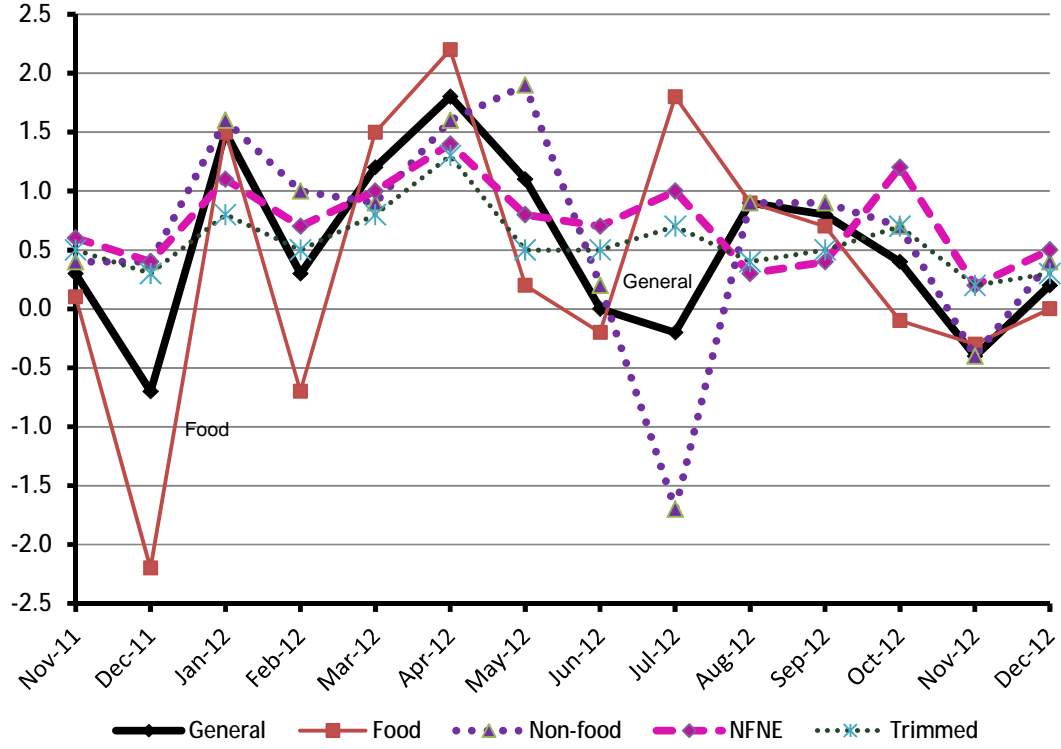


Figure 2: CPI Inflation MoM, Special Indices



I. Consumer Price Index (CPI)

The Consumer Price Index of December, 2012 has increased by 0.23% over November, 2012 and increased by 7.93% over corresponding month of last year.

| Table 2 : Consumer Price Index by Group of Commodities and Services (Base 2007-08) | | | | | | | | | |
|--|--|------------------|----------|----------|----------|------------------------|----------|---|----------|
| No | Group | Group Weight (%) | Indices | | | % Change Dec 2012 over | | Impact (Adjusted) (In % points) Dec 2012 over | |
| | | | Dec 2012 | Nov 2012 | Dec 2011 | Nov 2012 | Dec 2011 | Nov 2012 | Dec 2011 |
| | General | 100.00 | 172.82 | 172.42 | 160.12 | 0.23 | 7.93 | 0.23 | 7.93 |
| 1. | Food & Non-alcoholic Bev. | 34.83 | 192.71 | 192.84 | 179.79 | -0.07 | 7.19 | -0.03 | 2.54 |
| | <i>Non-perishable Food Items</i> | 29.84 | 195.52 | 193.52 | 178.72 | 1.03 | 9.40 | 0.31 | 2.82 |
| | <i>Perishable Food Items</i> | 4.99 | 175.90 | 188.77 | 186.18 | -6.82 | -5.52 | -0.34 | -0.28 |
| 2. | Alcoholic Bev. & Tobacco | 1.41 | 191.04 | 190.69 | 161.68 | 0.18 | 18.16 | 0.00 | 0.26 |
| 3. | Clothing & Footwear | 7.57 | 175.58 | 172.18 | 151.61 | 1.97 | 15.81 | 0.15 | 1.20 |
| 4. | Housing, Water, Electricity, Gas & Fuels | 29.41 | 150.10 | 150.01 | 144.16 | 0.06 | 4.12 | 0.02 | 1.22 |
| 5. | Furnishing & Household Equipment Maintenance | 4.21 | 180.08 | 178.63 | 160.35 | 0.81 | 12.30 | 0.04 | 0.52 |
| 6. | Health | 2.19 | 156.76 | 156.08 | 137.16 | 0.44 | 14.29 | 0.01 | 0.31 |
| 7. | Transport | 7.20 | 181.04 | 180.75 | 166.18 | 0.16 | 8.94 | 0.01 | 0.65 |
| 8. | Communication | 3.22 | 123.85 | 123.75 | 123.10 | 0.08 | 0.61 | 0.00 | 0.02 |
| 9. | Recreation & Culture | 2.03 | 166.69 | 166.19 | 141.43 | 0.30 | 17.86 | 0.01 | 0.36 |
| 10. | Education | 3.94 | 154.93 | 154.78 | 140.80 | 0.10 | 10.04 | 0.00 | 0.40 |
| 11. | Restaurants & Hotels | 1.23 | 202.44 | 201.11 | 182.94 | 0.66 | 10.66 | 0.01 | 0.13 |
| 12. | Miscellaneous | 2.76 | 201.20 | 200.34 | 180.79 | 0.43 | 11.29 | 0.01 | 0.31 |

Main contributors to month-on-month and year-on-year percentage changes are given below and detail is given in Annexure A.

1. **Month-on-month** Top few commodities which varied from previous month i.e. November 2012 are given below:-

Food Items Increased: Chicken (10.95%), Eggs (8.41%), Wheat (2.78%), Dry Fruits (2.30%), Fish (1.74%), Wheat Flour (1.50%), Rice (1.11%), Bakery & Confectionary (0.98%), Cereals (0.75%), Readymade Food (0.66%) and Tea (0.65%).

Decreased: Onions (20.56%), Fresh Vegetables (8.48%), Potatoes (6.62%), Gur (1.83%), Fresh Fruits & Sugar (1.30% each), Gram whole (1.21%), Pulse Gram (0.89%), Besan (0.76%), Wheat Product (0.65%), Tomatoes (0.58%), Pulse Masoor (0.43%) and Pulse Mash (0.40%).

Non-food Items Increased: Footwear (4.18%), Woolen readymade Garments (3.89%), Dopatta (2.19%), Woolen Cloth (1.94%), Firewood whole (1.50%), Household Servant (1.43%), Cleaning & Laundry (1.29%), Cotton Cloth (1.28%), Water Supply (1.25%) and Hosiery (1.24%).

Decreased: Kerosene Oil (0.96%) and Motor Fuel (0.24%).

2. **Year-on-year:** Top few commodities which varied from previous year i.e. December 2011 are given below:-

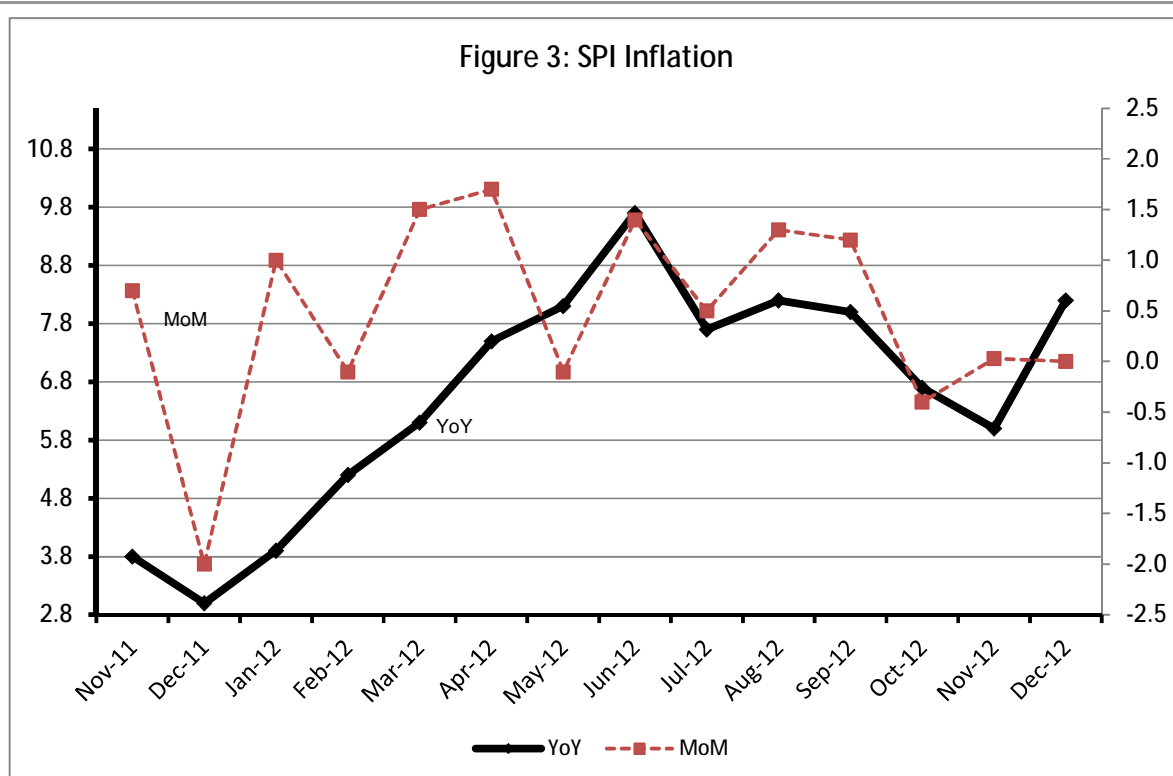
Food Items Increased: Pulse Gram (44.45%), Besan (42.74%), Eggs (26.53%), Honey (22.92%), Potatoes (21.97%), Beans (20.48%), Cigarettes (18.37%), Milk Powder (14.45%), Chicken (14.43%), Rice (14.38%), Gram Whole (12.36%), Milk Fresh (11.91%) and Cooking Oil (11.75%).
Decreased: Tomatoes (35.54%), Onions (30.58%), Pulse Moong (12.36%), Pulse Mash (9.74%), Gur (7.58%), Pulse Masoor (6.86%), Sugar (2.74%) and Fresh Vegetables (1.08%).

Non-food Items Increased: Text Books (40.53%), Motor Vehicle Tax (27.23%), Woolen Readymade Garments (26.08%), Footwear (20.96%), Dopatta (20.47%), Doctor (MBBS) Clinic Fee (19.93%), Utensils (19.63%) and Cleaning & Laundry (18.40%).
Decreased: Gas (42.09%).

III. Sensitive Price Indicator

Quintile-wise percentage changes YoY and MoM are given below in Table 3. The series from November 2011 to December 2012 is also graphed below in Figure 3.

| Table 3 : Sensitive Price Indicator (Base 2007-08) | | | | | |
|--|----------|----------|----------|------------------------|----------|
| Quintiles | Indices | | | % Change Dec 2012 over | |
| | Dec 2012 | Nov 2012 | Dec 2011 | Nov 2012 | Dec 2011 |
| 1 | 181.91 | 181.82 | 168.09 | 0.05 | 8.22 |
| 2 | 188.29 | 188.00 | 170.75 | 0.15 | 10.27 |
| 3 | 187.22 | 186.79 | 170.48 | 0.23 | 9.82 |
| 4 | 188.65 | 188.03 | 177.31 | 0.33 | 6.40 |
| 5 | 189.42 | 188.57 | 181.46 | 0.45 | 4.39 |
| Combined | 187.95 | 187.35 | 175.04 | 0.32 | 7.38 |



IV. Wholesale Price Index

The Wholesale Price Index for December 2012 increased by 0.43% over November 2012. It increased by 9.64% over the corresponding month of the last year. YoY and MoM movements, from November 2011 to December 2012 are also graphed below in Figure 4.

Table 4 : Wholesale Price Index by Group of Commodities (Base 2007-08)

| No. | Group | Group Weight (%) | Indices | | | % Change December 2012 over | | Impact (Adjusted) (in %age points) Dec 2012 over | |
|-----|--|------------------|----------|----------|----------|-----------------------------|----------|--|----------|
| | | | Dec 2012 | Nov 2012 | Dec 2011 | Nov 2012 | Dec 2011 | Nov 2012 | Dec 2011 |
| | General | 100.00 | 192.98 | 192.16* | 176.01 | 0.43 | 9.64 | 0.43 | 9.64 |
| 1. | Agriculture, Forestry & Fishery Products | 25.77 | 192.97 | 189.19 | 178.32 | 2.00 | 8.22 | 0.44 | 2.43 |
| 2. | Ores & Minerals, Electricity, Gas & Water | 12.04 | 208.45 | 207.85* | 170.51 | 0.29 | 22.25 | 0.02 | 2.53 |
| 3. | Food Products, Beverages & Tobacco, Textiles, Apparel & Leather Products | 31.11 | 188.44 | 187.56 | 170.36 | 0.47 | 10.61 | 0.08 | 3.00 |
| | i. Food Products, Bev. & Tobacco | 20.07 | 191.32 | 191.26 | 176.53 | 0.03 | 8.38 | 0.01 | 1.54 |
| | ii. Textiles and Apparel | 10.33 | 187.56 | 185.12 | 162.41 | 1.32 | 15.49 | 0.07 | 1.41 |
| | iii. Leather Products | 0.71 | 119.70 | 118.56 | 111.75 | 0.96 | 7.11 | 0.00 | 0.05 |
| 4. | Other Transportable Goods except Metal Products, Machinery & Equipments | 22.37 | 204.13 | 206.43 | 192.97 | -1.11 | 5.78 | -0.11 | 1.40 |
| 5. | Metal Products, Machinery & Equipments | 8.72 | 159.19 | 159.04 | 153.46 | 0.09 | 3.73 | 0.00 | 0.28 |

* Revised

Main contributors to month-on-month and year-on-year percentage changes are given below and detail is given in Annexure B.

1. **Month-on-month** Top few commodities which varied from previous month i.e. November 2012 are given below:-

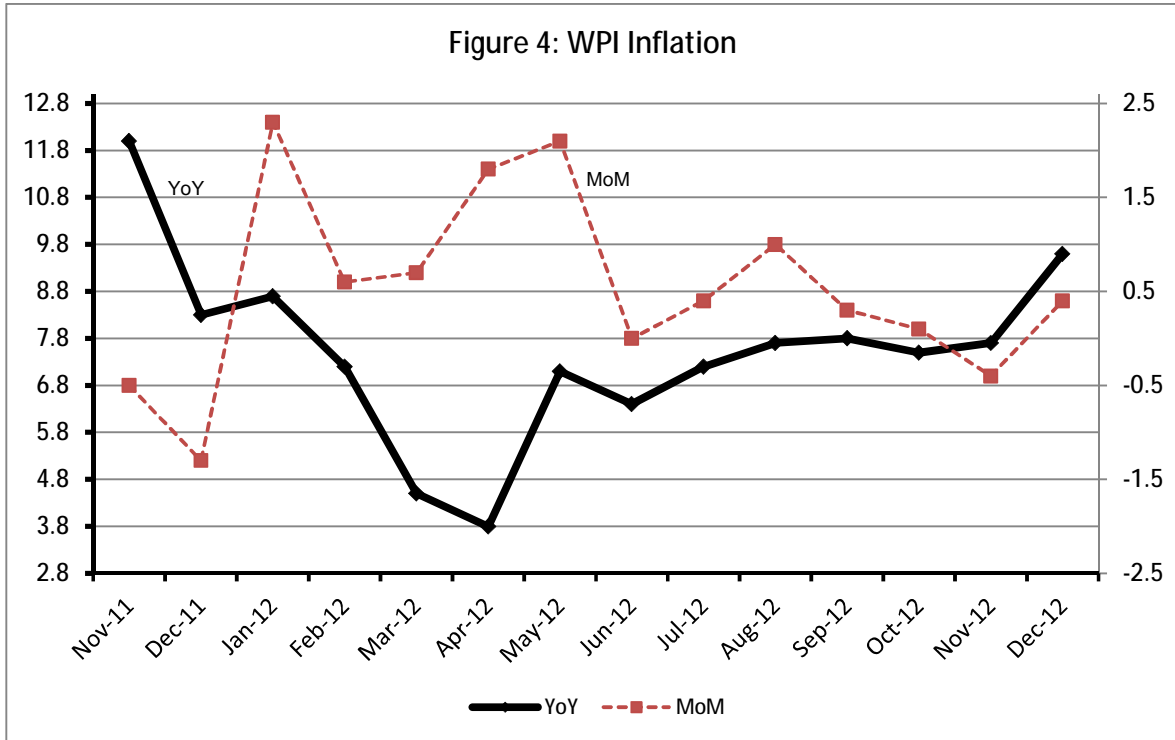
Increased: Fresh Fruits (59.42%), Poultry (13.95%), Eggs (7.38%), Sorghum/Jowar (5.00%), Wooven Fabrics (4.71%), Footwears (3.99%), Fuel Wood (3.82%), Blankets (3.61%), Wheat (2.52%), Dry Fruits (2.47%), Motor Vehicles (2.44%), Maize (2.27%) and Hoseiry Products (2.04%).

Decreased: Hard Board (18.84%), Vegetables (17.10%), Insecticides (10.66%), Edible Roots/ Potatoes (6.39%), Stimulants and Spices Crops (4.78%), Sugar Refined (2.59%), Cotton Seeds (2.38%), Kerosene Oil (2.28%), Furnace Oil (2.25%) and Fertilizers (2.08%).

2. **Year-on-year** Top ten commodities which varied from previous year i.e. December, 2011 are given below:-

Increased: Fresh Fruits (63.37%), Coal (50.60%), Other Cereal Flour (39.21%), Electrical Energy (36.10%), Hard Board (35.26%), Paints & Varnishes and Footwears (31.68% each), Printing Paper (28.95%), Fish (26.84%), Tobacco Products (25.68%) and Wooven Fabrics (24.84%).

Decreased: Synthetic Carpets (22.86%), Vegetables (21.41%), Cotton Seeds (17.66%), Furnace Oil (14.55%), Tractors (10.46%), Insecticides (9.73%), Stimulant & Spice Crops (9.13%), Sugar Crops (8.19%), Other Glass Articles (7.25%) and Dry Fruits (4.41%).



Annexure A: Consumer Price Index Numbers by Commodity Groups & Commodities (2007 - 2008 = 100)

| Item and Specification | Weight | Index Numbers | | | % Change in | | Dec 2012 Over Dec 2011 |
|---|----------------|---------------|---------------|---------------|-------------|-------------|---------------------------|
| | | Dec 2012 | Nov 2012 | Dec 2011 | Nov 2012 | Dec 2011 | |
| General | 100.000 | 172.82 | 172.42 | 160.12 | + | 0.23 | + 7.93 |
| Food & Non-alcoholic Beverages | 34.8343 | 192.71 | 192.84 | 179.79 | - | 0.07 | + 7.19 |
| 01 Wheat | 0.3477 | 178.02 | 173.21 | 161.39 | + | 2.78 | + 10.30 |
| 02 Wheat Flour | 4.1648 | 182.83 | 180.13 | 165.72 | + | 1.50 | + 10.32 |
| 03 Wheat Product | 0.0959 | 172.08 | 173.21 | 161.94 | - | 0.65 | + 6.26 |
| 04 Besan | 0.1500 | 233.96 | 235.75 | 163.91 | - | 0.76 | + 42.74 |
| 05 Rice | 1.5821 | 173.83 | 171.92 | 151.97 | + | 1.11 | + 14.38 |
| 06 Cereals | 0.1563 | 204.56 | 203.04 | 187.52 | + | 0.75 | + 9.09 |
| 07 Bakery & Confectionary | 1.1550 | 175.69 | 173.99 | 161.89 | + | 0.98 | + 8.52 |
| 08 Nimco | 0.4574 | 197.49 | 197.49 | 178.46 | + | 0.00 | + 10.66 |
| 09 Meat | 2.4303 | 219.05 | 218.77 | 204.89 | + | 0.13 | + 6.91 |
| 10 Chicken | 1.3596 | 172.35 | 155.34 | 150.61 | + | 10.95 | + 14.43 |
| 11 Fish | 0.2970 | 196.55 | 193.18 | 179.60 | + | 1.74 | + 9.44 |
| 12 Milk Fresh | 6.6800 | 218.75 | 217.36 | 195.47 | + | 0.64 | + 11.91 |
| 13 Milk Products | 0.6338 | 210.59 | 209.90 | 191.77 | + | 0.33 | + 9.81 |
| 14 Milk Powder | 0.1129 | 184.69 | 184.27 | 161.37 | + | 0.23 | + 14.45 |
| 15 Eggs | 0.4555 | 248.60 | 229.32 | 196.47 | + | 8.41 | + 26.53 |
| 16 Mustard Oil | 0.0952 | 160.99 | 160.75 | 153.30 | + | 0.15 | + 5.02 |
| 17 Cooking Oil | 1.7538 | 162.59 | 162.59 | 145.49 | + | 0.00 | + 11.75 |
| 18 Vegetable Ghee | 2.0714 | 160.41 | 160.51 | 155.28 | - | 0.06 | + 3.30 |
| 19 Dry Fruits | 0.2543 | 209.67 | 204.95 | 195.24 | + | 2.30 | + 7.39 |
| 20 Fresh Fruits | 1.8649 | 180.16 | 182.54 | 176.41 | - | 1.30 | + 2.13 |
| 21 Pulse Masoor | 0.2712 | 142.02 | 142.64 | 152.48 | - | 0.43 | - 6.86 |
| 22 Pulse Moong | 0.2336 | 215.75 | 215.42 | 246.18 | + | 0.15 | - 12.36 |
| 23 Pulse Mash (Washed) | 0.2098 | 192.21 | 192.99 | 212.94 | - | 0.40 | - 9.74 |
| 24 Pulse Gram | 0.2361 | 231.20 | 233.27 | 160.05 | - | 0.89 | + 44.45 |
| 25 Gram Whole | 0.1616 | 224.64 | 227.39 | 199.93 | - | 1.21 | + 12.36 |
| 26 Beans | 0.0269 | 215.10 | 214.27 | 178.54 | + | 0.39 | + 20.48 |
| 27 Potatoes | 0.4671 | 183.63 | 196.64 | 150.55 | - | 6.62 | + 21.97 |
| 28 Onion | 0.5312 | 166.58 | 209.68 | 239.95 | - | 20.56 | - 30.58 |
| 29 Tomatoes | 0.4391 | 129.72 | 130.48 | 201.23 | - | 0.58 | - 35.54 |
| 30 Fresh Vegetables | 1.6886 | 183.99 | 201.04 | 185.99 | - | 8.48 | - 1.08 |
| 31 Sugar | 1.0445 | 192.72 | 195.25 | 198.14 | - | 1.30 | - 2.74 |
| 32 Gur | 0.0220 | 222.46 | 226.61 | 240.71 | - | 1.83 | - 7.58 |
| 33 Honey | 0.0446 | 252.31 | 252.31 | 205.26 | + | 0.00 | + 22.92 |
| 34 SweetMeat | 0.2483 | 206.12 | 205.11 | 194.84 | + | 0.49 | + 5.79 |
| 35 Beverages | 1.1990 | 168.52 | 168.53 | 159.46 | - | 0.01 | + 5.68 |
| 36 Jam, Tomato Ketchup & Pickles | 0.2454 | 178.89 | 178.86 | 170.93 | + | 0.02 | + 4.66 |
| 37 Condiments | 0.2656 | 213.27 | 212.58 | 193.39 | + | 0.32 | + 10.28 |
| 38 Spices | 0.5441 | 256.95 | 257.64 | 249.24 | - | 0.27 | + 3.09 |
| 39 Tea | 0.8377 | 218.28 | 216.87 | 201.02 | + | 0.65 | + 8.59 |
| Alcoholic Beverages, Tobacco | 1.4135 | 191.04 | 190.69 | 161.68 | + | 0.18 | + 18.16 |
| 40 Cigarettes | 1.3906 | 191.16 | 190.81 | 161.50 | + | 0.18 | + 18.37 |
| 41 Betel Leaves & Nuts | 0.0229 | 183.89 | 183.14 | 172.89 | + | 0.41 | + 6.36 |
| Clothing & Footwear | 7.5708 | 175.58 | 172.18 | 151.61 | + | 1.97 | + 15.81 |
| 42 Cotton Cloth | 1.7286 | 161.67 | 159.62 | 149.68 | + | 1.28 | + 8.01 |
| 43 Woolen Cloth | 0.8759 | 195.87 | 192.14 | 168.48 | + | 1.94 | + 16.26 |
| 44 Readymade Garments | 0.9739 | 174.96 | 172.85 | 150.19 | + | 1.22 | + 16.49 |
| 45 Woolen Readymade Garments | 0.3964 | 184.41 | 177.50 | 146.26 | + | 3.89 | + 26.08 |
| 46 Hosiery | 0.5094 | 185.86 | 183.58 | 162.36 | + | 1.24 | + 14.47 |
| 47 Dopatta | 0.4412 | 192.59 | 188.47 | 159.86 | + | 2.19 | + 20.47 |
| 48 Cleaning and Laundry | 0.2110 | 195.35 | 192.87 | 164.99 | + | 1.29 | + 18.40 |
| 49 Tailoring | 0.8840 | 206.63 | 205.03 | 178.74 | + | 0.78 | + 15.60 |
| 50 Footwear | 1.5504 | 149.16 | 143.18 | 123.31 | + | 4.18 | + 20.96 |

Annexure A: Consumer Price Index Numbers by Commodity Groups & Commodities (2007 - 2008 = 100)

| Item and Specification | Weight | Index Numbers | | | % Change in | | | |
|--|----------------|---------------|---------------|---------------|-------------|------------------------|----------|--------------|
| | | Dec 2012 | Nov 2012 | Dec 2011 | Nov 2012 | Dec 2012 Over Dec 2011 | | |
| <i>Housing, Water, Elec., Gas, Other</i> | 29.4149 | 150.10 | 150.01 | 144.16 | + | 0.06 | + | 4.12 |
| 51 House Rent | 21.8149 | 139.61 | 139.61 | 131.37 | + | 0.00 | + | 6.27 |
| 52 Construction Input Items | 0.5623 | 203.13 | 202.11 | 186.35 | + | 0.50 | + | 9.00 |
| 53 Construction Wage Rates | 0.3331 | 172.69 | 171.19 | 153.46 | + | 0.88 | + | 12.53 |
| 54 Water Supply | 0.4971 | 134.90 | 133.23 | 128.32 | + | 1.25 | + | 5.13 |
| 55 Electricity | 4.3985 | 196.37 | 196.37 | 168.71 | + | 0.00 | + | 16.39 |
| 56 Gas | 1.5756 | 134.34 | 134.34 | 232.00 | + | 0.00 | - | 42.09 |
| 57 Kerosene Oil | 0.0057 | 272.53 | 275.18 | 239.70 | - | 0.96 | + | 13.70 |
| 58 Firewood Whole | 0.2277 | 236.83 | 233.33 | 202.66 | + | 1.50 | + | 16.86 |
| <i>Furnished H.Hold Equip.& House</i> | 4.2082 | 180.08 | 178.63 | 160.35 | + | 0.81 | + | 12.30 |
| 59 Furniture | 0.3315 | 169.13 | 168.01 | 150.16 | + | 0.67 | + | 12.63 |
| 60 Household Textiles | 0.6489 | 176.21 | 175.00 | 155.71 | + | 0.69 | + | 13.17 |
| 61 Household Equipment | 0.5936 | 158.25 | 157.13 | 148.58 | + | 0.71 | + | 6.51 |
| 62 Utensils | 0.3212 | 177.63 | 176.06 | 148.48 | + | 0.89 | + | 19.63 |
| 63 Plastic Products | 0.2547 | 175.69 | 175.06 | 164.47 | + | 0.36 | + | 6.82 |
| 64 Washing Soaps & Detergents | 0.7893 | 195.07 | 194.15 | 176.15 | + | 0.47 | + | 10.74 |
| 65 Sewing Needle & Dr Cell | 0.1496 | 151.84 | 151.54 | 138.05 | + | 0.20 | + | 9.99 |
| 66 Household Servant | 1.0432 | 191.93 | 189.23 | 166.33 | + | 1.43 | + | 15.39 |
| 67 Marriage Hall Charges | 0.0762 | 193.63 | 193.11 | 170.33 | + | 0.27 | + | 13.68 |
| <i>Health</i> | 2.1868 | 156.76 | 156.08 | 137.16 | + | 0.44 | + | 14.29 |
| 68 Drugs & Medicines | 1.2667 | 138.76 | 138.28 | 124.24 | + | 0.35 | + | 11.69 |
| 69 Medical Equipments | 0.0080 | 198.31 | 196.91 | 174.48 | + | 0.71 | + | 13.66 |
| 70 Doctor (MBBS) Clinic Fee | 0.5904 | 194.63 | 193.76 | 162.29 | + | 0.45 | + | 19.93 |
| 71 Medical Tests | 0.3217 | 157.07 | 156.00 | 140.99 | + | 0.69 | + | 11.41 |
| <i>Transport</i> | 7.2023 | 181.04 | 180.75 | 166.18 | + | 0.16 | + | 8.94 |
| 72 Motor Vehicles | 0.6630 | 152.89 | 152.84 | 141.05 | + | 0.03 | + | 8.39 |
| 73 Motor Vehicle Accessories | 0.2439 | 209.17 | 206.89 | 186.03 | + | 1.10 | + | 12.44 |
| 74 Motor Fuel | 3.0269 | 172.28 | 172.69 | 162.24 | - | 0.24 | + | 6.19 |
| 75 Mechanical Service | 0.4552 | 184.20 | 182.81 | 156.41 | + | 0.76 | + | 17.77 |
| 76 Motor Vehicle Tax | 0.1099 | 152.02 | 152.02 | 119.48 | + | 0.00 | + | 27.23 |
| 77 Transport Services | 2.7034 | 195.85 | 195.09 | 178.50 | + | 0.39 | + | 9.72 |
| <i>Communication</i> | 3.2198 | 123.85 | 123.75 | 123.10 | + | 0.08 | + | 0.61 |
| 78 Postal Services | 0.0662 | 173.52 | 173.27 | 164.83 | + | 0.14 | + | 5.27 |
| 79 Communication & Apparatus | 3.1536 | 122.80 | 122.71 | 122.23 | + | 0.07 | + | 0.47 |
| <i>Recreation & Culture</i> | 2.0227 | 166.69 | 166.19 | 141.43 | + | 0.30 | + | 17.86 |
| 80 Recreation & Culture | 0.8634 | 122.16 | 122.25 | 116.78 | - | 0.07 | + | 4.61 |
| 81 Text Books | 0.5706 | 231.05 | 230.22 | 164.41 | + | 0.36 | + | 40.53 |
| 82 Newspapers | 0.1934 | 155.92 | 155.91 | 149.97 | + | 0.01 | + | 3.97 |
| 83 Stationery | 0.3953 | 176.31 | 174.73 | 157.89 | + | 0.90 | + | 11.67 |
| <i>Education</i> | 3.9431 | 154.93 | 154.78 | 140.80 | + | 0.10 | + | 10.04 |
| 84 Education | 3.9431 | 154.93 | 154.78 | 140.80 | + | 0.10 | + | 10.04 |
| <i>Restaurants & Hotels</i> | 1.2286 | 202.44 | 201.11 | 182.94 | + | 0.66 | + | 10.66 |
| 85 Readymade Food | 1.2286 | 202.44 | 201.11 | 182.94 | + | 0.66 | + | 10.66 |
| <i>Miscellaneous Goods & Services</i> | 2.7550 | 201.20 | 200.34 | 180.79 | + | 0.43 | + | 11.29 |
| 86 Personal Care | 1.4935 | 180.05 | 179.17 | 163.53 | + | 0.49 | + | 10.10 |
| 87 Cosmetics | 0.3853 | 149.65 | 149.54 | 141.04 | + | 0.07 | + | 6.10 |
| 88 Blades | 0.0322 | 173.53 | 172.39 | 159.77 | + | 0.66 | + | 8.61 |
| 89 Personal Equipments | 0.8440 | 263.21 | 262.07 | 230.29 | + | 0.43 | + | 14.30 |

Annexure B: Wholesale Price Indices by Major Groups and Commodities

(2007 - 2008 = 100)

| Item and Specification | Weight | Index Numbers | | | % Change in Dec 2012 Over | | | |
|--|-----------------|---------------|---------------|---------------|---------------------------|-------------|----------|--------------|
| | | Dec 2012 | Nov 2012 | Dec 2011 | Nov 2012 | Dec 2012 | Dec 2011 | Nov 2011 |
| General | 100.0000 | 192.98 | 192.16 | 176.01 | + | 0.43 | + | 9.64 |
| Agriculture Forestry & | 25.7674 | 192.97 | 189.19 | 178.32 | + | 2.00 | + | 8.22 |
| 001 Wheat | 0.6297 | 185.88 | 181.31 | 167.12 | + | 2.52 | + | 11.23 |
| 002 Maize | 0.6764 | 165.11 | 161.45 | 147.58 | + | 2.27 | + | 11.88 |
| 003 Rice | 2.4413 | 163.76 | 163.85 | 150.30 | - | 0.05 | + | 8.96 |
| 004 Sorghum/Jowar | 0.0214 | 198.10 | 188.66 | 185.14 | + | 5.00 | + | 7.00 |
| 005 Millet/Bajra | 0.0374 | 157.83 | 156.89 | 144.74 | + | 0.60 | + | 9.04 |
| 006 Vegetables | 1.2441 | 185.19 | 223.38 | 235.64 | - | 17.10 | - | 21.41 |
| 007 Fresh Fruits | 1.5144 | 207.91 | 130.42 | 127.26 | + | 59.42 | + | 63.37 |
| 008 Dry Fruits | 0.2478 | 179.38 | 175.06 | 187.65 | + | 2.47 | - | 4.41 |
| 009 Cotton Seeds | 1.1511 | 166.78 | 170.85 | 202.55 | - | 2.38 | - | 17.66 |
| 010 Other Oil Seeds | 0.0722 | 186.07 | 183.21 | 169.82 | + | 1.56 | + | 9.57 |
| 011 Edible Roots/Potatoes | 0.2540 | 176.09 | 188.12 | 174.44 | - | 6.39 | + | 0.95 |
| 012 Stimulant and Spice Crops | 0.1634 | 170.28 | 178.82 | 187.38 | - | 4.78 | - | 9.13 |
| 013 Pulses | 0.4901 | 207.89 | 211.21 | 205.76 | - | 1.57 | + | 1.04 |
| 014 Sugar Crops | 1.0725 | 267.92 | 267.92 | 291.82 | + | 0.00 | - | 8.19 |
| 015 Fibre Crops | 5.3169 | 179.31 | 177.87 | 170.80 | + | 0.81 | + | 4.98 |
| 016 Unmanufactured Tobacco | 0.0742 | 169.08 | 169.08 | 167.91 | + | 0.00 | + | 0.70 |
| 017 Poultry | 0.5633 | 175.34 | 153.87 | 147.79 | + | 13.95 | + | 18.64 |
| 018 Raw Milk from Bovine Animals | 7.0279 | 213.76 | 213.76 | 188.73 | + | 0.00 | + | 13.26 |
| 019 Eggs | 0.5034 | 250.45 | 233.24 | 201.26 | + | 7.38 | + | 24.44 |
| 020 Raw Animal Materials/Wool | 0.0351 | 137.58 | 137.58 | 131.99 | + | 0.00 | + | 4.24 |
| 021 Hides and Fur Skins, Raw | 0.4834 | 138.82 | 138.71 | 133.44 | + | 0.08 | + | 4.03 |
| 022 Fuel Wood in Logs | 0.0179 | 216.60 | 208.63 | 188.09 | + | 3.82 | + | 15.16 |
| 023 Fish Live Fresh or Chilled | 1.7295 | 178.10 | 176.27 | 140.41 | + | 1.04 | + | 26.84 |
| Ores/Minerals, Elec., Gas & | 12.0389 | 208.45 | 207.85 | 170.51 | + | 0.29 | + | 22.25 |
| 024 Coal not Agglomerated | 0.7508 | 196.08 | 196.08 | 130.20 | + | 0.00 | + | 50.60 |
| 025 Natural Gas Liquified | 5.7385 | 193.63 | 192.37 | 180.13 | + | 0.65 | + | 7.49 |
| 026 Salt and Pure Sodium Chloride | 0.0584 | 164.54 | 164.54 | 154.20 | + | 0.00 | + | 6.71 |
| 027 Electrical Energy | 5.4912 | 226.10 | 226.10 | 166.13 | + | 0.00 | + | 36.10 |
| Food, Beverages, Tobacco, Tea | 31.1122 | 188.44 | 187.56 | 170.36 | + | 0.47 | + | 10.61 |
| Food Products, Beverages | 20.0718 | 191.32 | 191.26 | 176.53 | + | 0.03 | + | 8.38 |
| 028 Meat of Animals | 3.4559 | 228.57 | 227.09 | 215.47 | + | 0.65 | + | 6.08 |
| 029 Vegetables and Fruit Juice | 0.0058 | 188.52 | 187.55 | 177.14 | + | 0.52 | + | 6.42 |
| 030 Dried Fruits and Nuts | 0.1733 | 224.06 | 221.39 | 201.89 | + | 1.21 | + | 10.98 |
| 031 Fruit Juices | 0.3880 | 157.91 | 157.66 | 155.01 | + | 0.16 | + | 1.87 |
| 032 Vegetable Oils Refined | 1.9242 | 156.05 | 154.80 | 150.85 | + | 0.81 | + | 3.45 |
| 033 Vegetable Ghee | 1.5632 | 139.95 | 139.91 | 138.76 | + | 0.03 | + | 0.86 |
| 034 Oil Cakes | 0.9611 | 172.67 | 175.06 | 151.98 | - | 1.37 | + | 13.61 |
| 035 Processed Liquid Milk | 4.4437 | 208.43 | 208.43 | 181.63 | + | 0.00 | + | 14.76 |
| 036 Milk and Cream in Solid Form | 0.0316 | 171.59 | 171.16 | 165.54 | + | 0.25 | + | 3.65 |
| 037 Ice Cream | 0.0047 | 167.68 | 167.68 | 154.15 | + | 0.00 | + | 8.78 |
| 038 Dairy Products N.E.C | 0.0117 | 204.91 | 204.91 | 182.91 | + | 0.00 | + | 12.03 |
| 039 Wheat Flour | 2.3034 | 168.13 | 166.05 | 153.41 | + | 1.25 | + | 9.60 |
| 040 Other Cereal Flour | 0.0604 | 200.17 | 203.99 | 143.79 | - | 1.87 | + | 39.21 |
| 041 Sugar Refined | 1.7975 | 199.74 | 205.06 | 204.30 | - | 2.59 | - | 2.23 |
| 042 Chocolate | 0.0139 | 99.19 | 99.19 | 100.00 | + | 0.00 | - | 0.81 |
| 043 Sugar Confectionary | 0.0738 | 100.40 | 100.40 | 100.40 | + | 0.00 | + | 0.00 |
| 044 Coffee and Tea | 0.7303 | 199.81 | 198.68 | 191.69 | + | 0.57 | + | 4.24 |
| 045 Spices | 0.1449 | 301.56 | 303.12 | 290.49 | - | 0.51 | + | 3.81 |
| 046 Other Food Products | 0.0336 | 319.27 | 323.46 | 318.59 | - | 1.30 | + | 0.21 |
| 047 Mineral Water | 0.0207 | 168.32 | 168.32 | 164.64 | + | 0.00 | + | 2.24 |
| 048 Beverages | 0.6303 | 137.86 | 137.86 | 133.04 | + | 0.00 | + | 3.62 |
| 049 Tobacco Products | 1.2998 | 208.80 | 208.80 | 166.13 | + | 0.00 | + | 25.68 |
| Textiles & Apparels | 10.3289 | 187.56 | 185.12 | 162.41 | + | 1.32 | + | 15.49 |
| 050 Cotton Yarn | 5.2491 | 211.22 | 207.49 | 174.87 | + | 1.80 | + | 20.79 |
| 051 Nylon Yarn | 0.1719 | 178.80 | 177.24 | 176.23 | + | 0.88 | + | 1.46 |
| 052 Blended Yarn | 0.1689 | 192.45 | 188.63 | 191.22 | + | 2.03 | + | 0.64 |
| 053 Woven Fabrics | 0.0128 | 206.00 | 196.74 | 165.01 | + | 4.71 | + | 24.84 |
| 054 Cotton Fabrics | 0.6343 | 174.17 | 174.17 | 165.72 | + | 0.00 | + | 5.10 |
| 055 Other Fabrics | 1.1016 | 165.62 | 165.62 | 153.88 | + | 0.00 | + | 7.63 |
| 056 Silk and Reyon Fabrics | 0.7350 | 154.21 | 154.01 | 138.37 | + | 0.13 | + | 11.45 |
| 057 Towels | 0.1235 | 203.06 | 203.06 | 178.07 | + | 0.00 | + | 14.03 |

Annexure B: Wholesale Price Indices by Major Groups and Commodities

(2007 - 2008 = 100)

| Item and Specification | Weight | Index Numbers | | | % Change in Dec 2012 Over | | | |
|---------------------------------------|----------------|---------------|---------------|---------------|---------------------------|-------------|----------|-------------|
| | | Dec 2012 | Nov 2012 | Dec 2011 | Nov 2012 | Dec 2012 | Dec 2011 | |
| 058 Blankets | 0.0029 | 184.97 | 178.52 | 149.14 | + | 3.61 | + | 24.02 |
| 059 Bed Sheets | 0.0913 | 197.94 | 197.94 | 164.70 | + | 0.00 | + | 20.18 |
| 060 Quilts | 0.0019 | 151.68 | 149.37 | 147.05 | + | 1.55 | + | 3.15 |
| 061 Woolen Carpets | 0.0383 | 106.55 | 106.55 | 103.57 | + | 0.00 | + | 2.88 |
| 062 Synthetic Carpets | 0.0566 | 114.41 | 113.15 | 148.31 | + | 1.11 | - | 22.86 |
| 063 Hosiery Products | 0.8832 | 178.65 | 175.07 | 152.82 | + | 2.04 | + | 16.90 |
| 064 Readymade Garments | 1.0576 | 136.27 | 135.15 | 126.24 | + | 0.83 | + | 7.95 |
| Leather Products | 0.7115 | 119.70 | 118.56 | 111.75 | + | 0.96 | + | 7.11 |
| 065 Leather without Hair | 0.2973 | 109.83 | 109.83 | 109.34 | + | 0.00 | + | 0.45 |
| 066 Other Leather N.E.C | 0.2567 | 122.57 | 122.57 | 120.85 | + | 0.00 | + | 1.42 |
| 067 Footwears | 0.1575 | 133.63 | 128.50 | 101.48 | + | 3.99 | + | 31.68 |
| Other Transportable Goods | 22.3659 | 204.13 | 206.43 | 192.97 | - | 1.11 | + | 5.78 |
| 068 Timber | 0.0165 | 148.36 | 148.23 | 135.73 | + | 0.09 | + | 9.31 |
| 069 Printing Paper | 0.4279 | 155.35 | 152.93 | 120.47 | + | 1.58 | + | 28.95 |
| 070 Hard Board | 0.1579 | 194.44 | 239.58 | 143.75 | - | 18.84 | + | 35.26 |
| 071 Coke | 0.2797 | 163.45 | 163.45 | 155.82 | + | 0.00 | + | 4.90 |
| 072 Motor Spirit | 1.5336 | 171.33 | 172.08 | 148.46 | - | 0.44 | + | 15.40 |
| 073 Diesel Oil | 5.2664 | 261.87 | 265.58 | 238.13 | - | 1.40 | + | 9.97 |
| 074 Kerosine Oil | 0.2151 | 263.47 | 269.61 | 237.92 | - | 2.28 | + | 10.74 |
| 075 Furnace Oil | 3.2664 | 168.81 | 172.69 | 197.56 | - | 2.25 | - | 14.55 |
| 076 Mobil Oil | 0.7114 | 184.45 | 182.64 | 171.42 | + | 0.99 | + | 7.60 |
| 077 Chemicals | 1.7720 | 156.65 | 153.56 | 146.14 | + | 2.01 | + | 7.19 |
| 078 Dyeing Material | 0.1539 | 104.26 | 104.26 | 108.04 | + | 0.00 | - | 3.50 |
| 079 Fertilizers | 2.8657 | 261.25 | 266.79 | 262.61 | - | 2.08 | - | 0.52 |
| 080 Pesticides | 0.2763 | 197.49 | 197.49 | 165.03 | + | 0.00 | + | 19.67 |
| 081 Insecticides | 0.1276 | 117.42 | 131.43 | 130.07 | - | 10.66 | - | 9.73 |
| 082 Paints and Varnishes | 0.1916 | 237.48 | 237.48 | 180.34 | + | 0.00 | + | 31.68 |
| 083 Medicines | 1.1428 | 139.54 | 139.50 | 113.92 | + | 0.03 | + | 22.49 |
| 084 Soaps and Detergents | 0.8168 | 168.41 | 168.45 | 152.08 | - | 0.02 | + | 10.74 |
| 085 Auto Tyres | 0.2703 | 180.84 | 180.73 | 172.05 | + | 0.06 | + | 5.11 |
| 086 Plastic Products | 0.4550 | 191.35 | 191.35 | 179.97 | + | 0.00 | + | 6.32 |
| 087 Glass sheets | 0.2089 | 190.93 | 190.93 | 171.03 | + | 0.00 | + | 11.64 |
| 088 Other Glass Articles | 0.1635 | 191.72 | 191.72 | 206.71 | + | 0.00 | - | 7.25 |
| 089 Ceramics and Sanitary Fixture | 0.0244 | 157.32 | 157.32 | 132.70 | + | 0.00 | + | 18.55 |
| 090 Bricks, Blocks and Tiles | 0.1566 | 173.20 | 172.40 | 169.63 | + | 0.46 | + | 2.10 |
| 091 Cement | 1.8145 | 187.19 | 187.15 | 155.70 | + | 0.02 | + | 20.22 |
| 092 Bed Foam | 0.0006 | 141.17 | 140.67 | 125.50 | + | 0.36 | + | 12.49 |
| 093 Matches | 0.0505 | 133.50 | 133.50 | 120.39 | + | 0.00 | + | 10.89 |
| Metal Product, Machinery & | 8.7156 | 159.19 | 159.04 | 153.46 | + | 0.09 | + | 3.73 |
| 094 Pig Iron | 0.0593 | 128.97 | 128.97 | 128.97 | + | 0.00 | + | 0.00 |
| 095 Steel Bar and Sheets | 1.4022 | 133.53 | 133.72 | 133.20 | - | 0.14 | + | 0.25 |
| 096 Pipe Fittings | 0.0780 | 141.47 | 141.47 | 140.49 | + | 0.00 | + | 0.70 |
| 097 Steel Products | 0.3879 | 161.94 | 161.94 | 157.56 | + | 0.00 | + | 2.78 |
| 098 Engines and Motors | 0.0046 | 109.07 | 109.07 | 109.07 | + | 0.00 | + | 0.00 |
| 099 Vacuum Pumps | 0.0155 | 115.39 | 115.39 | 115.39 | + | 0.00 | + | 0.00 |
| 100 Air Conditioners | 0.0049 | 172.67 | 172.67 | 163.59 | + | 0.00 | + | 5.55 |
| 101 Cultivators | 0.0551 | 189.23 | 189.23 | 184.66 | + | 0.00 | + | 2.47 |
| 102 Chuff Cutter | 0.1293 | 138.54 | 138.54 | 131.08 | + | 0.00 | + | 5.69 |
| 103 Tractors | 0.0028 | 161.96 | 161.96 | 180.89 | + | 0.00 | - | 10.46 |
| 104 Lathe Machines | 0.0525 | 147.68 | 147.68 | 147.51 | + | 0.00 | + | 0.12 |
| 105 Concrete Mixture | 0.0107 | 138.83 | 138.83 | 138.83 | + | 0.00 | + | 0.00 |
| 106 Fridge,WashM,SewM,Fans,Iro | 1.1645 | 166.45 | 165.38 | 163.41 | + | 0.65 | + | 1.86 |
| 107 Electric Wires | 0.0912 | 159.57 | 159.57 | 163.22 | + | 0.00 | - | 2.24 |
| 108 Lighting Equipments | 1.4431 | 148.22 | 148.10 | 142.85 | + | 0.08 | + | 3.76 |
| 109 Radio and Television | 0.1843 | 126.46 | 126.46 | 131.33 | + | 0.00 | - | 3.71 |
| 110 Motor Vehicles | 0.0244 | 171.79 | 167.70 | 154.47 | + | 2.44 | + | 11.21 |
| 111 Motorcycles | 0.2570 | 125.19 | 125.19 | 121.72 | + | 0.00 | + | 2.85 |
| 112 Bicycles | 3.3483 | 177.87 | 177.87 | 167.39 | + | 0.00 | + | 6.26 |