



# **CONTRACEPTIVE PERFORMANCE REPORT**

**APRIL – JUNE, 2011**

***GOVERNMENT OF PAKISTAN  
STATISTICS DIVISION  
FEDERAL BUREAU OF STATISTICS  
ISLAMABAD***



## **GENESIS OF THE REPORT**

The Contraceptive Performance Report owes to continuous efforts of the following FBS Officers/Officials:

1. Dr. Bahrawar Jan, Deputy Director General
2. Ms. Rizwana Siddique, Chief Statistical Officer
3. Syed Adil Hashmi, Statistical Officer
4. Mr. Arshad Ahmad Khan, Research Supervisor
5. Mr. Mahmood-ul-Hasan, Statistical Investigator
6. Mr. Sarfraz Ahmad, Statistical Assistant
7. Mr. Muhammad Qadeer Anwar, Data Entry Operator



## **PREFACE**

Federal Bureau of Statistics (FBS) is a prime official agency of Pakistan which is responsible for collection, compilation and dissemination of reliable and timely statistical information to the policy makers, planners and researchers. It publishes a variety of reports, based on primary and secondary data, especially on economics and social aspects of the country.

The Quarterly Contraceptive Performance Report April -June 2011 encompasses the contraceptive performance at all service delivery points in the country. The Federal Bureau of Statistics (FBS) aims at ensuring nationwide coverage of Family Planning/Reproductive Health activities. The quarterly contraceptive performance report is an important intervention to gauge outlet-wise, sector-wise and method-wise contraceptive progress and observe the direction and track/trend for future Contraceptive Requirement and Distribution (CRD) in the country.

Above all, I am grateful to Provincial Population Welfare Departments (PPWDs), the District Population Welfare Office, Islamabad Capital Territory (ICT), Population Welfare Department Azad Jammu & Kashmir (AJK), Population Welfare Programme Gilgit-Baltistan(GB), Social Marketing of Contraceptive (SMC) and other stakeholders for their support in this important input of contraceptive usage.

I hope, the user of the report would be able to learn about important facts on contraceptive activities and will assist in the field of population and development. Comments and suggestions for improvement of Contraceptive Performance Report would be highly appreciated.

**Arif Mahmood Cheema**  
**Director General**  
Federal Bureau of Statistics  
Statistics Division  
Government of Pakistan



# CONTENTS

	Page No.
<b>PREFACE</b>	iii
<b>CONTENTS</b>	v
<b>SUMMARY</b>	vii
<b>INTRODUCTION</b>	1
<b>Methodology</b>	1
<b>Concept and Definitions</b>	2
<b>Data Sources</b>	3
<b>RESULTS AND DISCUSSION</b>	4
1. Province -wise Comparison in terms of Couple Years of Protection	4
2. Outlets-wise Comparison in terms of Couple Year of Protection	4
3. Method-wise Comparison of Contraceptives Performance	5
4. Province/Sector and Method-wise Comparison of Contraceptives Performance with Previous quarter	6
5. Outlets/ Province/Sector-wise Comparison of Performance of Contraceptives Delivery Services with Previous quarter:	6-8
<i>i. Family Welfare Centers (FWCs)</i>	6
<i>ii. Reproductive Health Services Centers (RHS-A)</i>	7
<i>iii. Reproductive Health Services Centers (RHS-B)</i>	7
<i>iv. Mobile Service Units (MSUs)</i>	7
<i>v. Provincial Line Departments (PLDs) including outlets of Health Department</i>	7
<i>vi. Registered Medical Practitioners (RMPs)</i>	7
<i>vii. Hakeems and Homoeopaths (H&amp;H)</i>	8
<i>viii. Male Mobilizer</i>	8
<i>ix. Non-Governmental Organization (NGO)-FPAP</i>	8
<i>x. Azad Jammu &amp; Kashmir (AJK)</i>	8
<i>xi. Gilgit – Baltistan (GB)</i>	8
<i>xii. Federally Administered Tribal Areas( FATA)</i>	8
6. Method and Outlets- wise Average performance	9
<i>i. Average performance per FWC by method</i>	9
<i>ii. Average performance per RHS-A by method</i>	10
<i>iii. Average performance per MSU by method</i>	11
7. Percentage Distribution of Total CYP by Province/Sector During the Current Quarter	12
8. Percentage Distribution of Total CYP by Service Outlets During the Current Quarter	12
9. Percentage Distribution of Total CYP of Contraceptive Performance by Methods during the Current Quarter	12
10. Province-Wise Family Planning and Mother & Child Health (MCH) Services Delivery	12
<b>STATISTICAL TABLES</b>	13-21





## SUMMARY

The salient feature of the report based on the data of Population Welfare activities in the country are given as under:-

- Ø The overall, Contraceptive Performance for the quarter of April-June 2011 in terms of Couple Years of Protection (CYP) by comparing with the corresponding quarter of the last year (April - June 2010), the performance has decreased by 13.8%. However, when the current quarter performance was compared with the previous quarter (January - March, 2011), it showed a minor increase of 0.9 %.
- Ø The Province-wise Contraceptive Performance of current quarter when compared with the corresponding quarter of 2010, it reflects an increase of 10.0% in Khyber Pakhtunkhwa and 0.6% in Punjab, whereas decline in two provinces namely, Sindh, and Balochistan by 2.8% and 5.8% respectively while in Islamabad, the drop in Contraceptive performance is recorded as 9.5%. The comparison of the current quarter with the corresponding quarter of 2010, FATA depicts an increase by 50.8%. Whereas AJK and GB showed an increase of 2.4% and 11.0% respectively. On the other hand when contraceptive performance in this quarter (April-June 2011) was compared with previous quarter (January-March,2011), it has shown an increase in Punjab by 5.8%, Khyber Pakhtunkhwa by 8.2% and Balochistan by 4.7% whereas Sindh depict minor decrease of 0.8%. The federal district Islamabad, AJK and GB, showed an increase by 31.1%, 36.2% and 20.2% respectively.
- Ø Methods-wise Contraceptive Performance, based on CYP, of the current quarter when compared with the same quarter of the previous year (2010), shows an increase in Condoms by 4.1% and in Oral Pills by 7.5%, whereas a decreasing trend has been observed in Contraceptive Surgery, Injectable and IUDs by 36.6%, 13.2% and 7.9% respectively.



## **INTRODUCTION**

The rapid population growth is the main obstacle to a country's social progress, economic stability, health, environment, law & order and food security. Pakistan having the highest population growth is the sixth most populous country in the world. Moreover, Pakistan is making the third highest annual net addition to the global population after India and China. The country's high fertility rate is a major contributor to this situation since mortality rate has been fairly stable over the years.

The country is under heavy stress due to rapid growth in population. Therefore, an immediate action is required to curb the increasing trend of population. The provision of quality contraceptives and its easy access will help to reduce the Total Fertility Rate and consequently to control the population. This report is on the usage of contraceptives that are provided in the market from the government as well as from private outlets.

The main objectives of the report are as following:

- To assess the province/sector-wise, method-wise and outlet-wise contraceptives performance.
- To estimate annual contraceptives requirement and their distribution in the country.
- To examine province/sector-wise, method-wise and outlet-wise contraceptives growth during the current quarter.
- To calculate Contraceptive Prevalence Rate (CPR) to assess the birth control strategy of country.

## **Methodology**

As per past practice in the Ministry of Population Welfare, the Federal Bureau of Statistics collects the contraceptive performance data on monthly basis by post, by fax and through e-mail from the Provincial Population Welfare Departments (PPWDs); Population Welfare Departments AJK, GB, FATA; District Population Welfare Office, Islamabad (ICT); Family Planning Association of Pakistan (FPAP); Marie Stopes Society of Pakistan (NGO); Social Marketing of Contraceptive (SMC); Regional Training Institutes (RTIs) and Public-private Partnership (PPP)/Target Groups Institutes (TGIs). After editing and coding, the data is being entered on monthly basis and then processed according to tabulation plan at Data Processing Centre of FBS. At the end of quarter, monthly data is consolidated into the quarterly data. On the basis of quarterly data, contraceptive performance report is prepared. In this report, the

percentage change in the quarter under report is compared with the corresponding quarter of last year as well as with the previous quarter of the current year. This report on Contraceptive Performance is for the quarter April - June, 2011.

## **Concepts and Definitions**

In this report, the following concepts and definitions have been used:

**Family Welfare Centre (FWC):** The FWC is the cornerstone of Pakistan's Population Welfare Programme. These centres constitute the most extensive institutional network in the country for promoting and delivering family planning services in both urban and rural areas. As a static facility, it serves a population of about 7000; while operating through its satellites clinics and outreach facility, an FWC covers a population of about 12000.

**Reproductive Health Services (RHS) Centres :** The Reproductive Health Service Centers are the major clinical component of the Pakistan's Population Welfare Programme. They provide services through RHS-A Centers and RHS-B Centers.

The RHS-A centers are hospital-based service delivery units in the government sector. They provide contraceptive surgery facilities for women and men with safe and effective backup medical support. The RHS-B centres are Well-established hospitals and clinics in the private sector. These have fully-equipped operating facilities (operation theatre facilities, beds for admission, post-operative care, sterilization and emergency resuscitation equipment, etc.) and trained work force.

**Mobile Service Units (MSUs):** The MSUs are the flagship of the Population Welfare Programme. They provide a package of quality Family Planning/Reproductive Health (FP/RH) services to the people of those remote villages and hamlets where no other health facility exists. The MSUs operate through specially-designed vehicles which carry with-in them all the facilities of a mini clinic ensuring complete privacy for simple gynecological procedures.

**Regional Training Institutes (RTIs):** The RTIs provide skill-based training in FP/RH for all categories of health care providers i.e. Doctors, medical students, nurses, student nurses, lady health visitors and other paramedics. The RTIs also undertake activities focused on raising the awareness about the level of hakims, homeopaths, community health workers, teachers and college students.

**Provincial Line Departments (PLDs):** The Health outlets of PLDs have been involved in the Population Welfare Programme for provision of services in order to improve access and expand coverage of facilities for promotion of family planning.

***Couple Years of Protection (CYP):*** The term Couple Years of Protection (CYP) is one of several commonly used indicators to assess international family planning efforts. It is the protection provided by contraceptive methods during one-year period, based upon the volume of all contraceptives sold or distributed free of charge to clients during that period. It is also an indirect estimator of birth control.

CONVERSION FORMULA FOR CONTRACEPTIVE USAGE INTO COUPLE YEARS OF PROTECTION (CYP)		
CONDOM	NO. OF UNITS / 144	= 1 CYP
ORAL PILL	NO. OF CYCLES / 15	= 1 CYP
IUD	NO. OF INSERTIONS x 3.5	= 1 CYP
INJECTABLE	NO. OF VIALS / 5	= 1 CYP
CONTRACEPTIVE SURGERY (CS)	NO. OF CASES x 12.5	= 1 CYP

## Data Sources

The Contraceptive Performance Report is prepared on the basis of data received from the following sources:

- Provincial Population Welfare Departments (PPWDs);
- Population Welfare Departments AJK, GB and FATA;
- The District Population Welfare Office, ICT, Islamabad
- Family Planning Association of Pakistan (FPAP) ;
- Marie Stopes Society of Pakistan (NGO);
- Social Marketing of Contraceptive (SMC);
- Regional Training Institutes (RTIs) and
- Public-private Partnership(PPP)/Target Groups Institutes(TGIs)

## **RESULTS AND DISCUSSION**

### **1. Province-wise Comparison in terms of Couple Years of Protection**

The province/sector-wise comparison of contraceptive performance during current quarter, (April – June, 2011) in terms of Couple Year of Protection (CYP) has been made with corresponding quarter of the previous year, and also with the previous quarter (January-March, 2011) by calculating % age change for the respective period. Table-1 given at the end of report is referred, in this regard.

At National level, a decrease of 13.8% has been observed for all program and non-program outlets during the current quarter (April – June, 2011) as compared to corresponding quarter of 2010. However when performance was compared with the previous quarter (January- March, 2011), it reflected a minor increase of 0.9%.

At provincial level, an increase is observed by 10.0% for Khyber Pakhtunkhwa and 0.6% for Punjab during the current quarter as compared to corresponding quarter of 2010, whereas a decrease in two provinces namely, Sindh, and Balochistan by 2.8%, and 5.8% respectively, is observed. When compared with the previous quarter Khyber Pakhtunkhwa, Punjab and Blochistan showed an increase by 8.2%, 5.8% and 4.7% respectively and decrease is depicted in Sindh by 0.8%.

For Islamabad a decrease of 9.5% over the corresponding quarter of the last year and a increase of 31.1% over previous quarter has been recorded for April – June, 2011.

An increase of 50.8% has been observed for FATA in the current quarter as compared to corresponding quarter of the last year and decrease of 11.9% over previous quarter (January- March, 2011).

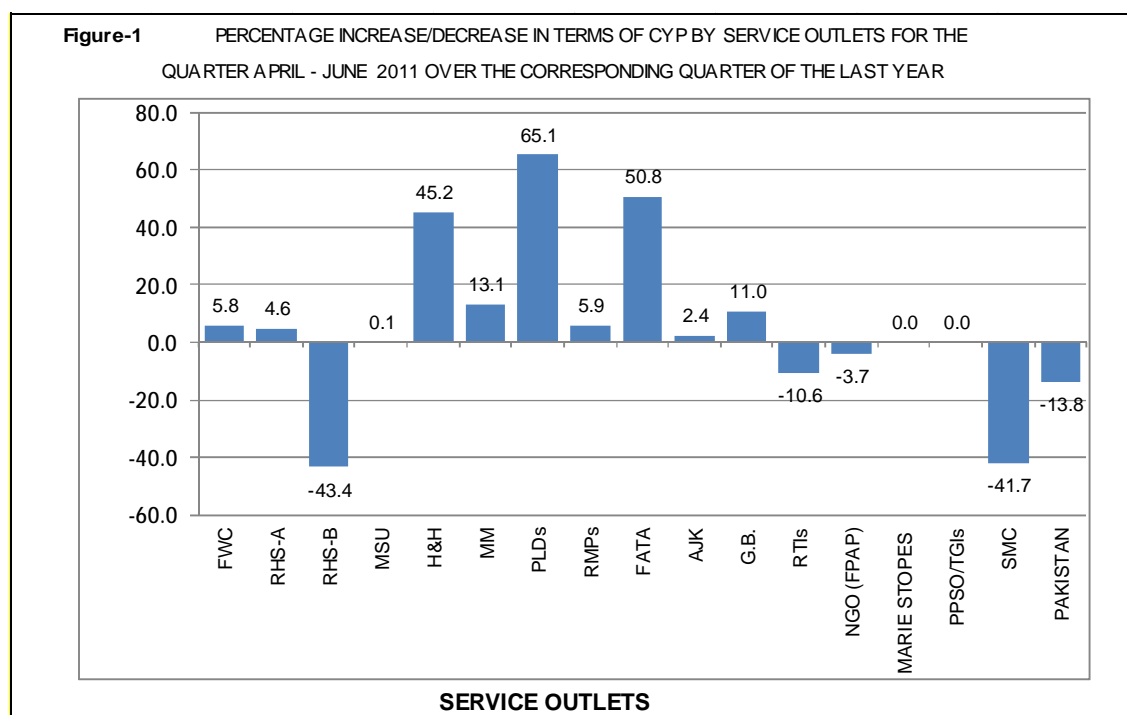
An increase of 2.4% and 11.0% was recorded in current quarter with respect to corresponding quarter of 2010 for AJK and Gilgit-Baltistan respectively. Moreover significant increase of 36.2% and 20.2% was observed in current quarter over previous quarter.

### **2. Outlets-wise Comparison in terms of Couple year of Protection**

The contribution of service outlets towards CYP during April – June, 2011 when compared with corresponding quarter of last year, showed an increase of ,65.1% in Provincial Line Departments (PLDs), 50.8% in FATA, 45.2% in Hakeem & Homoeopaths,13.1% in Male Mobilizers (MM), 11.0% in Gilgit-Baltistan (GB), 5.9% in Registered Medical Practioners (RMPs), 5.8% in Family Welfare Centers (FWCs), 4.6% in

Reproductive Health Services-A Centers (RHS-A), and 2.4% in AJK whereas a drop of 43.4% in RHS-B, 41.7% in Social Marketing, 10.6% in Regional Training Institutes (RTIs), and 3.7% in Family Planning Association Of Pakistan (FPAP- NGOs), was observed.

The outlets-wise service delivery performance when compared with the previous quarter of 2011 it showed an increase in RMP, AJK, GB, MSU, RHS-A, H&H and FWCs by 52.3%, 36.2%, 20.2%, 16.5%, 12.8%, 10.7% and 8.6% respectively. Whereas RHS-B, PLDs, RTIs, FATA, SMC and NGO-FPAP showed a decrease of 35.5%, 25.5%, 21.6%, 11.9%, 9.9% and 1.3% respectively. The details are given in Table-2 and graphical presentation of data is as under:



### 3. Method-wise Comparison of Contraceptives Performance

In absolute terms, the Contraceptive Performance of Program and Non-Program service outlets reported a sale of 37.141million units of Condoms, 1.572 million cycles of Oral Pills, 0.315 million insertions of Internal Urine Devices (IUDs) and 0.726 million vials of Injectables. Also 30360 of Contraceptive Surgery Cases were performed during the current quarter.

The method-wise analysis, in term of CYP, compared with the corresponding quarter of 2010 showed an increase of 4.1% in Condoms, 7.5% for Oral pills whereas decrease by 7.9% for IUDs, 13.2% for Injectables and 36.6% for Contraceptive Surgery cases. Performance compared with the previous quarter (January –March, 2011) showed increase in

IUDs for 11.7%, Oral Pill by 3.4% and decreasing trend is observed in Condoms, Contraceptives Surgeries and Injectables by 15.5% , 11.1%, and 4.5% respectively. The details are shown in Table-3.

#### **4. Province/Sector and Method-wise Comparison of Contraceptives Performance with previous quarter**

In case of condoms, the Province/Sector-wise and Method-wise performance of current quarter when compared with the previous quarter showed increase in Punjab by 3.0%, Sindh by 0.5% , KPK by 3.8 % , Balochistan by 3.5%, Islamabad by 8.1%, FATA by 3.4%, AJK by 3.0%, GB by 50.8%, RTIs by 19.8% and NGO-FPAP 15.5%. Whereas a decrease in SMC by 25.1% and in Marie Stopes Society by 4.5%. For Oral Pills increase in Punjab by 1.0%, Sindh by 2.1%, KPK by 3.1%, Balochistan by 0.4%, AJK by 24.0%, GB by 24.2% , RTIs by 49.7% , NGO(FPAP) by 42.5 % , Marie Stopes Society 35.84% and SMC by 3.9% has been witnessed. Whereas decrease in Islamabad by 7.0% and in FATA by 6.3% has been observed. For IUDs, increase in Punjab by 6.8%, Sindh by 19.1%, KPK by 11.5% in Balochistan by 18.0% Islamabad by 56.3%, AJK by 33.6%, GB by 25.7% , Marie Stopes Society by 16.7% and SMC by 25.2% has been observed. However decrease in FATA by 16.2%, RTIs by 24.3% and NGOs(FPAP) by 3.5 % has been depicted. In case of Injectables, an increase in KPK by 0.3% , Balochistan by 6.3% and FATA by 1.5%, AJK by 13.8%, GB by 11.3%, NGO by 11.0% and Marie Stopes Society by 23.1% whereas decrease in Punjab by 7.8%, Sindh by 7.7%, Islamabad by 5.2%, RTIs by 16.2% and SMC by 9.0% has been observed. When it comes to Contraceptives Surgery cases, an increase in Punjab by 7.2% and in AJK by 169.0 % , whereas decrease in Sindh by 19.4%, KPK by 0.1%, Balochistan by 22.4% Islamabad by 1.1%, SMC by 63.7% and NGO-FPAP by 5.8% were witnessed. The details are reflected in Table-4.

#### **5. Outlets/Province/Sector-wise Comparison of Contraceptives Performance for Delivery Services with previous quarter**

The Outlets/ Province/Sector-wise Comparison of Performance of Contraceptives Delivery Services is depicted in Table-5. The details are as under:

(i) *Family Welfare Centers (FWCs)*: The performance of FWCs during the current quarter compared with the previous quarter in terms of CYP has been positive at national level by 8.6%. At provincial level, an increase is observed in Punjab by 6.1%, Sindh by 13.5% Khyber Pakhtunkhwa by 9.9%, Balochistan by 15.6% and Islamabad by 21.7%. At



national level, FWCs have shown an increase in condoms by 2.5%, for Oral Pills by 0.7% and for IUDs by 11.5% whereas decrease in Injectables by 5.1%.

*(ii) Reproductive Health Services Centers (RHS-A):* The performance of RHS-A centers during current quarter compared with the previous quarter in terms of CYP has been positive, at national level, by 12.8% and at provincial level in Punjab by 24.4% and Islamabad by 11.5% whereas a decrease has been observed in Sindh by 1.6%, Khyber Pakhtunkhwa by 4.7% and Balochistan by 14.8%. At national level, the performance of RHS-A centers has shown an increase for Oral Pills by 0.5%, IUDs by 0.8%, and Contraceptive Surgery by 44.5% whereas decrease in Condom by 0.1% and in Injectables by 1.9%.

*(iii) Reproductive Health Services Centres (RHS-B):* The performance of RHS-B centers of the current quarter compared with the previous quarter in terms of CYP has decreased at national level by 35.5% and at provincial level an increase is observed in Khyber Pakhtunkhwa by 54.0%, and Balochistan by 14.4% whereas a decrease is noticed in Punjab by 31.6%, Sindh by 55.4% and Islamabad by 3.3%. At national level, the performance of RHS-B centers has shown an increase in Condoms by 9.5% and IUDs by 9.0% whereas a decrease is observed for Oral Pills by 71.2% , Injectables by 63.1%, and Contraceptive Surgery by 51.1%.

*(iv) Mobile Service Units (MSUs):* The performance of MSUs of the current quarter compared with the previous quarter in terms of CYP has increased at national level by 16.5%. At provincial level, an increase in Punjab by 21.0%, in Sindh by 12.5% and Khyber Pakhtunkhwa by 8.2% and Balochistan by 15.4%. At national level, the performance of MSUs has shown an increase for Condom by 5.0%, in Oral Pills by 8.1% and IUDs by 19.3% and for Injectables by 2.2%.

*(v) Provincial Line Departments (PLDs) including outlets of Health Department:* A decrease has been reported in terms of CYP at national level by 25.5% whereas at Provincial level an increase is observed in Sindh by 130%, Khyber Pakhtunkhwa by 5.8% and Islamabad by 33.6%.Whereas a decrease in Punjab by 31.3% and Balochistan by 14.0%. In the method-wise analysis the performance has increased for Condom 43.0% and Oral Pills by 13.8% whereas decrease in IUDs by 29.3% and in Injectables by 19.3%

*(vi) Registered Medical Practitioners (RMPs):* In terms of CYP, an increase has been observed in the performance of RMPs at national level by 52.3% and at provincial level, increase is shown in Punjab by 69.9%, Sindh by 0.3% and Islamabad by 68.6% whereas decline has been reported in Khyber Pakhtunkhwa by 7.5% and Balochistan by 3.0%. The

method-wise performance of RMPs for the current quarter has shown an increase at national level for Condom by 3.6%, for Oral Pills by 7.4% and for IUDs by 91.0 % whereas a decrease in Injectables by 9.9%.

**(vii) Hakeems and Homoeopaths (H&H):** In terms of CYP, an increase has been observed in the performance of H&H at national level by 10.7% and at provincial level in Punjab an increase is by 9.7%, in Sindh by 102% and in Khyber Pakhtunkhwa by 21.9% whereas a decrease has been reported in Balochistan by 7.5%. The method-wise performance of H&H for the current quarter has shown an increase at national level for Condom by 7.7% and for Oral Pills by 18.9%.

**(viii) Male Mobilizer:** In terms of CYP, an increase has been observed in the performance of Male Mobilizer at national level by 1.3% and at provincial level, for Punjab by 2.7%, Khyber Pakhtunkhwa by 1.0% , and Islamabad by 15.7%.Whereas decrease is observed in Sindh by 0.3% and Balochistan by 8.9%. The method-wise performance of Male Mobilizer for the current quarter has shown an increase at national level for Condom by 1.7% and for Oral Pills by 0.4%.

**(ix) Non-Governmental Organization (NGO)-FPAP:** The overall contraceptive performance has shown a decrease by 1.3% in terms of CYP for NGO (FPAP) compared with the previous quarter, whereas the method-wise performance, has shown an increase in Condoms by 15.6%, Oral Pills by 42.5% and injectable by 11.0% and Contraceptive Surgery by 0.8% and decrease has been observed for IUDs by 3.5%

**(x) Azad Jammu & Kashmir (AJK):** The contraceptive performance during the current quarter for AJK has increased in terms of CYP by 36.2%. In the method-wise performance, an increase has been observed in Condoms by 3.0%, for Oral Pills by 24.0% and for IUDs by 33.6%, Injectables by 13.8% and decrease in C.S. cases by 22.0%.

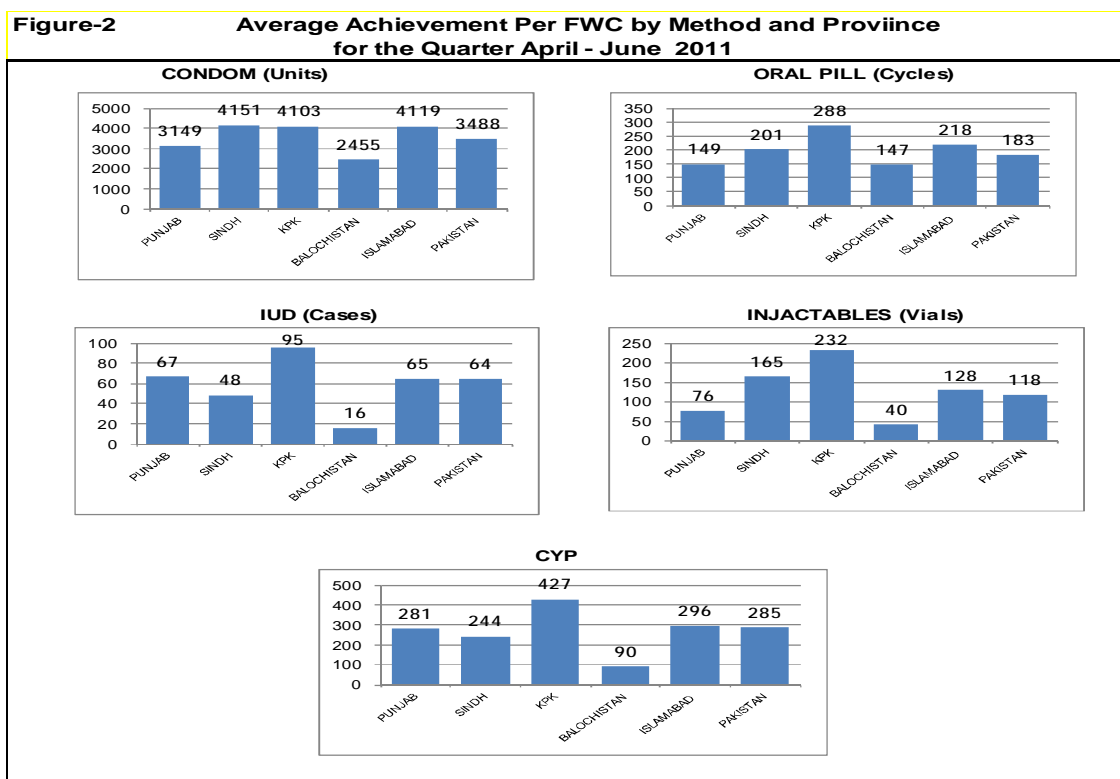
**(xi) Gilgit – Baltistan (GB):** A increase of 20.2% has been reported in terms of CYP in GB. In method-wise analysis, an increase of 50.8% has been observed in Condom, 24.2% in Oral Pills, 25.75% in IUDs and 11.3% in Injectables.

**(xii) FATA:** The contraceptive performance during the current quarter for FATA has been reported decrease of 11.9% in terms of CYP . In the method-wise performance, an increase has been observed for Condoms by 3.4%, and for Injectables by 1.5% whereas decrease in Oral Pills by 6.3 % and in IUD by 16.2% .

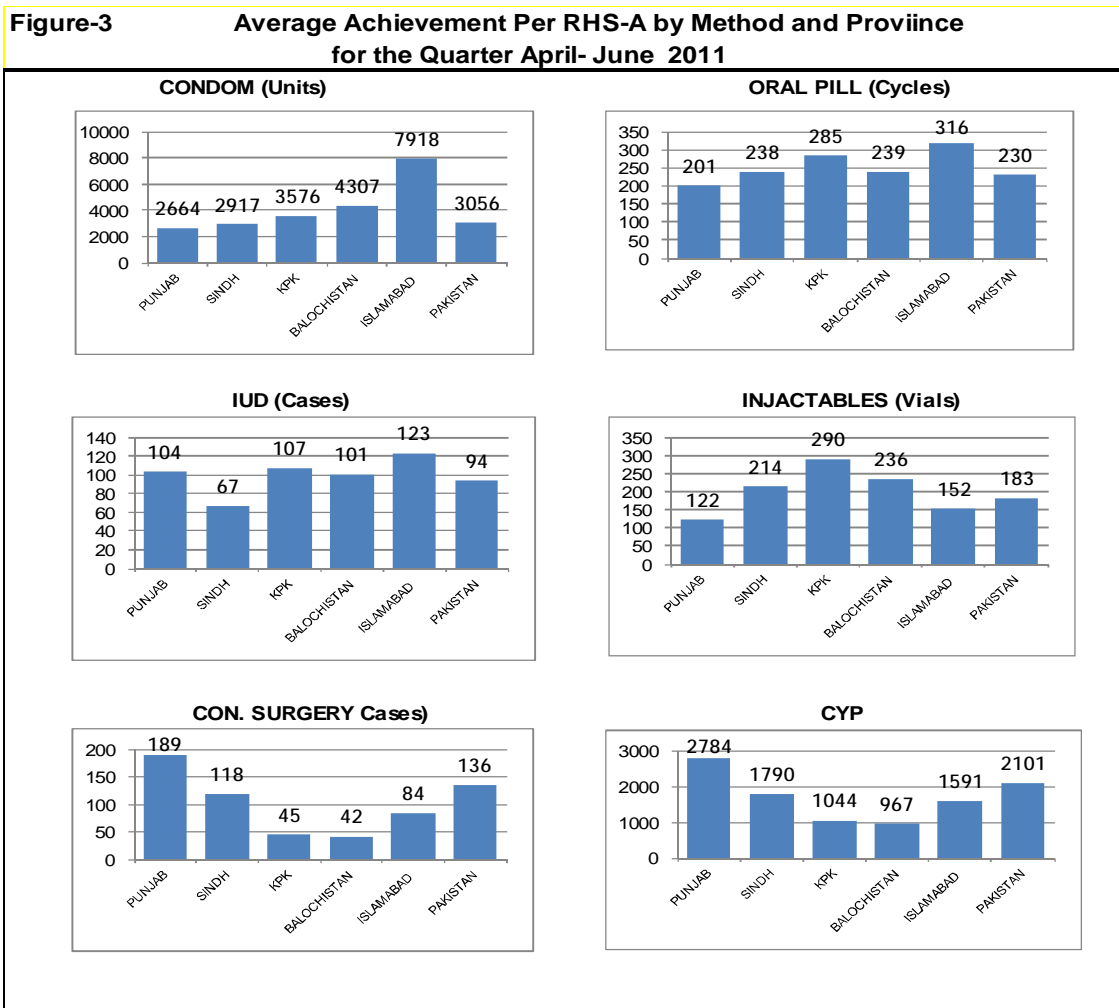
## 6. Method and Outlet-wise Average Performance

Method and Outlet-wise Average performance for the Federal and Provincial setups during the Current Quarter is given in Table-6. The details are as under:

(i) **Average performance per FWC by method:** The highest average performance reported for Condoms per FWC is 4151 units sold in Sindh followed by 4103 units in Islamabad, 4103 units in Khyber Pakhtunkhwa, 2455 units in Balochistan and 3149 units in Punjab. The maximum numbers of 288 cycles of Oral Pills were dispensed by Khyber Pakhtunkhwa and the lowest 147 cycles were reported by FWCs of Balochistan. The highest insertions of IUDs i.e. 95 have been reported by FWCs of Khyber Pakhtunkhwa and the lowest figure reported is 16 by FWCs of Balochistan. By looking at the figure for injectables, it is observed that the maximum number has been reported for Khyber Pakhtunkhwa as 232 vials while the minimum number i.e. 40 have been observed in Balochistan. When these contraceptives performances are translated into CYP, it is observed that on average, the highest number of CYP i.e. 427 has been reported by Khyber Pakhtunkhwa while the lowest i.e. 90 for Balochistan. The graphical presentation of each contraceptive method dispensed per FWC is presented below:

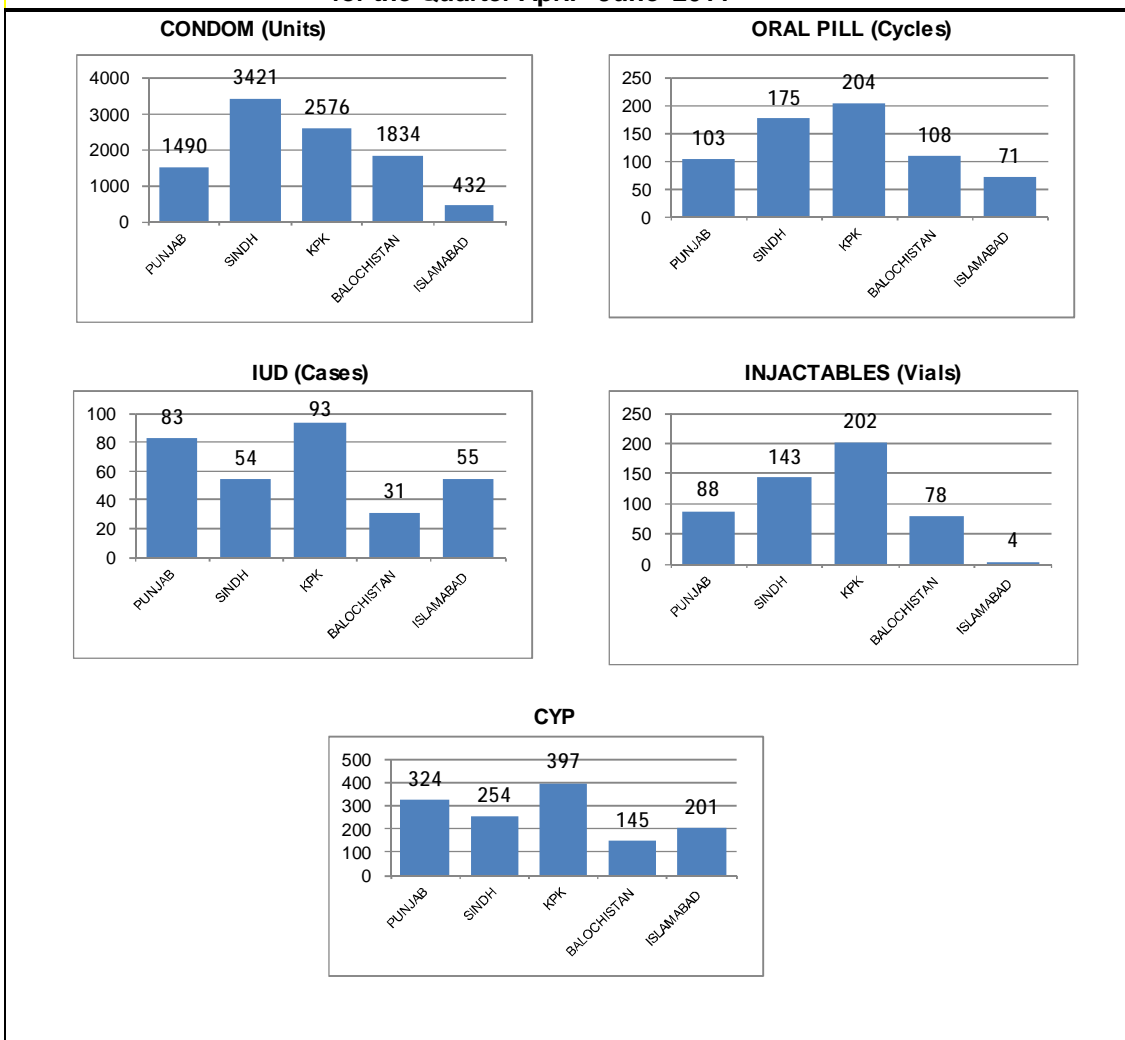


(ii) **Average performance per RHS-A by method:** The highest average achievement for Condoms per RHS-A is 7918 units sold in Islamabad followed by 4307 units in Balochistan, 3576 in Khyber Pakhtunkhwa, 2917 in Sindh, and 2664 in Punjab. The Reproductive Health Services-A Centres of Islamabad were able to dispense maximum number i.e. 316 cycles of Oral Pills as compared to the lowest 201 cycles of Oral Pills by RHS-A of Punjab. The highest insertions of IUDs 123 were reported by Islamabad in comparison to lowest 67 insertions carried out by RHS-A in Sindh. The highest Injectables i.e. 290 vials were reported by Khyber Pakhtunkhwa in comparison to 122 vials reported by RHS-A of Punjab. The highest Contraceptive Surgery cases were performed by Punjab i.e. 189 and the lowest i.e. 42 in Balochistan. When the data of contraceptives performances is translated into CYP, it is observed that on average, the highest numbers of CYP have been calculated for Punjab i-e 2784 while the lowest 967 appeared for Balochistan. The graphical presentation of each contraceptive method recorded per RHS-A is presented below:



(iii) **Average performance per MSU by method:** The highest average reported performance for Condoms per MSU is 3421 in Sindh followed by 2576 in Khyber Pakhtunkhwa, 1834 in Balochistan and 1490 in Punjab respectively. The Mobile Service Units of Khyber Pakhtunkhwa were able to dispense highest numbers of 204 cycles of Oral Pills as compared to the lowest 71 cycles of Oral Pills in Islamabad. The highest reported insertions of IUDs i.e. 93 took place in KPK compared to the lowest 31 IUDs in Balochistan. The highest numbers of Injectables 202 vials reported by Khyber Pakhtunkhwa as compared to lowest 4 vials reported by MSUs of Islamabad. When the contraceptive performance data is translated into CYP, it is observed that on the average, the highest numbers of CYP i.e. 397 were calculated for Khyber Pakhtunkhwa while the lowest were 145 for Balochistan. The graphical presentation of each contraceptive method as reported by MSUs is presented below:

**Figure-4 Average Achievement Per MSU by Method and Province for the Quarter April - June 2011**



**7. Percentage distribution of total CYP by Province/Sector during the current quarter**

The percentage distribution of total CYP by Province/Sector during the current quarter reflected 39.40% in Punjab, 13.85% in Sindh, 11.76% in Khyber Pakhtunkhwa, 1.50% in Balochistan, 1.26% in Islamabad, 0.30% in FATA, 0.39% in AJK and 0.14 % in GB. The details are given in Table-7.

**8. Percentage distribution of total CYP by Service Outlets during the current quarter<sup>(table-8)</sup>**

The percentage distribution of total CYP by Service outlets during the current quarter was 38.59% in FWCs, 16.47% in RHS-A, 4.00% in RHS-B, 3.65% in MSUs, 1.41% in PLDs, 1.51% in RMPs. The details are presented in the Table-8.

**9. Percentage distribution of Total CYP of Contraceptive Performance by Methods during the current quarter**

The method-wise percentage contribution for Condom, Oral Pills, IUDs, Injectables and Contraceptive Surgery in terms of total CYP has been 12.96%, 5.27%, 55.42%, 7.29% and 19.07% respectively. The details are given in Table-9

**10. Province-wise Family Planning and Mother & Child Health (MCH) Services Delivery**

The data indicates that during the quarter 2,122,937 clients availed Family Planning Services of various Contraceptive methods out of which the Family Welfare Centers provided the services to 116,261 numbers of clients for Pre-natal and 87,030 for Post-natal Care. Apart from these, FW Centers had provided treatment to 829,998 clients for General Ailments (Children + Adults). The details are given in Table-10.

# **STATISTICAL TABLES**





## LIST OF TABLES

<b>TABLE-1</b>	PROVINCE/SECTOR- WISE PERFORMANCE DURING APRIL TO JUNE, 2011 OVER THE PREVIOUS QUARTER AND WITH THE CORRESPONDING QUARTER OF THE LAST YEAR
<b>TABLE-2</b>	OUTLETS/SECTOR-WISE PERFORMANCE DURING APRIL TO JUNE, 2011 OVER THE PREVIOUS QUARTER AND CORRESPONDING QUARTER OF THE LAST YEAR.
<b>TABLE-3</b>	METHOD-WISE PERFORMANCE DURING APRIL TO JUNE, 2011 OVER THE PREVIOUS QUARTER AND CORRESPONDING QUARTER OF THE LAST YEAR.
<b>TABLE-4</b>	PROVINCE/SECTOR AND METHOD-WISE PERFORMANCE OF CONTRACEPTIVES DELIVERY SERVICES FOR THE QUARTER APRIL TO JUNE, 2011 OVER JANUARY-MARCH, 2011
<b>TABLE-5</b>	OUTLETS/SECTOR-WISE PERFORMANCE OF CONTRACEPTIVES FOR THE PERIOD APRIL TO JUNE, 2011 OVER JANUARY- MARCH, 2011.
<b>TABLE-6</b>	OUTLETS/SECTOR-WISE AVERAGE PERFORMANCE OF CONTRACEPTIVES FOR THE PERIOD APRIL TO JUNE, 2011.
<b>TABLE-7</b>	PERCENTAGE DISTRIBUTION OF TOTAL CYP BY PROVINCE/SECTOR DURING APRIL TO JUNE, 2011.
<b>TABLE-8</b>	PERCENTAGE DISTRIBUTION OF TOTAL CYP BY SERVICE OUTLETS DURING APRIL TO JUNE, 2011.
<b>TABLE-9</b>	PERCENTAGE DISTRIBUTION OF TOTAL CYP BY METHODS DURING APRIL TO JUNE,2011
<b>TABLE-10</b>	PROVINCE-WISE FAMILY PLANNING AND MOTHER & CHILD HEALTH (MCH) SERVICES DELIVERY FOR THE PERIOD APRIL TO JUNE, 2011.

Table-1

**PROVINCE/SECTOR WISE PERFORMANCE DURING APRIL - JUNE 2011 OVER THE  
PREVIOUS QUARTER AND CORRESPONDING QUARTER OF THE LAST YEAR**

PROVINCE/SECTOR	COUPLE YEARS OF PROTECTION (CYP)			%age Change	
	APRIL-JUNE	APRIL-JUNE	JAN-MAR	APR-JUN-2011	APR-JUN-2011
	2011	2010	2011	APR-JUN-2010	JAN-MAR. 2011
PUNJAB	784,213	779,342	741,070	0.6	5.8
SINDH	275,583	283,405	277,712	-2.8	-0.8
KHYBER PAKHTUNKHWA	234,088	212,881	216,336	10.0	8.2
BALUCHISTAN	29,768	31,585	28,438	-5.8	4.7
ISLAMABAD	25,073	27,715	19,127	-9.5	31.1
FATA	5,933	3,935	6,735	50.8	-11.9
AJK	7,841	7,655	5,757	2.4	36.2
GILGIT BALTISTAN (GB)	2,787	2,511	2,318	11.0	20.2
REGIONAL TRAINING INSTITUTES (RTIs)	2,188	2,446	2,791	-10.6	-21.6
NON-GOVERNMENTAL ORGANIZATIONS (NGOs) (FPAP)	129,985	134,935	131,734	-3.7	-1.3
MARIE STOPES SOCIETY OF PAKISTAN	23,818	17,106	20,400	-	16.8
PUBLIC PRIVATE SECTOR ORGANIZATIONS (PPSO)	-	61	-	-	-
SOCIAL MARKETING OF CONTRACEPTIVES (SMC)	469,020	804,772	520,478	-41.7	-9.9
<b>PAKISTAN</b>	<b>1,990,296</b>	<b>2,308,349</b>	<b>1,972,896</b>	<b>-13.8</b>	<b>0.9</b>

Table-2

**OUTLET/SECTOR WISE PERFORMANCE DURING APRIL - JUNE 2011 OVER THE  
PREVIOUS QUARTER AND CORRESPONDING QUARTER OF THE LAST YEAR**

OUTLETS/SECTOR	COUPLE YEARS OF PROTECTION (CYP)			%age Change	
	APRIL-JUNE	APRIL-JUNE	JAN-MAR	APR-JUN-2011	APR-JUN-2011
	2011	2010	2011	APR-JUN-2010	JAN-MAR. 2011
FAMILY WELFARE CENTRES (FWCs)	768063	726020	707240	5.8	8.6
REPRODUCTIVE HEALTH SERVICES-A CENTRES (RHS-A)	327832	313291	290599	4.6	12.8
REPRODUCTIVE HEALTH SERVICES-B CENTRES (RHS-B)	79589	140513	123393	-43.4	-35.5
MOBILE SERVICE UNITS (MSU)	72689	72637	62370	0.1	16.5
HAKHEEM & HOMOEOPATHS (H&H)	2295	1581	2074	45.2	10.7
MALE MOBLIZER (MM)	40245	35580	39724	13.1	1.3
PROVINCIAL LINE DEPARTMENTS (PLDs)	27969	16942	37552	65.1	-25.5
REGISTER MEDICAL PRACTITIONERS (RMPs)	30043	28366	19731	5.9	52.3
FATA	5933	3,935	6735	50.8	-11.9
AJK	7841	7,655	5757	2.4	36.2
GILGIT BALTISTAN (GB)	2787	2,511	2318	11.0	20.2
REGIONAL TRAINING INSTITUTES (RTIs)	2188	2,446	2791	-10.6	-21.6
NON-GOVERNMENTAL ORGANIZATIONS (NGOs) (FPAP)	129985	134,935	131734	-3.7	-1.3
MARIE STOPES SOCIETY OF PAKISTAN	23818	17,106	20400	-	16.8
PUBLIC PRIVATE SECTOR ORGANIZATIONS (PPSO)	0	59	0	-	-
SOCIAL MARKETING OF CONTRACEPTIVES (SMC)	469020	804,772	520478	-41.7	-9.9
<b>PAKISTAN</b>	<b>1990296</b>	<b>2308349</b>	<b>1972896</b>	<b>-13.8</b>	<b>0.9</b>

Table-3

**METHOD WISE PERFORMANCE DURING APRIL - JUNE 2011 OVER THE  
PREVIOUS QUARTER AND CORRESPONDING QUARTER OF THE LAST YEAR**

METHOD	OVERALL PERFORMANCE			%age Change	
	APRIL-JUNE	APRIL-JUNE	JAN-MAR	APR-JUN-2011	APR-JUN-2011
	2011	2010	2011	APR-JUN-2010	JAN-MAR. 2011
CONDOM (Units)	37140891	35687982	43930729		
CYP	257923	247833	305075	4.1	-15.5
ORAL PILL (Cycles)	1571965	1462143	1520740		
CYP	104798	97476	101383	7.5	3.4
IUD (Insertions)	315124	342124	282240		
CYP	1102934	1197434	987840	-7.9	11.7
INJECTABLE (Vials)	725708	836029	759557		
CYP	145142	167206	151911	-13.2	-4.5
CON. SURGERY (Cases)	30360	47872	34135		
CYP	379500	598400	426688	-36.6	-11.1
<b>TOTAL CYP</b>	<b>1990296</b>	<b>2308349</b>	<b>1972896</b>	<b>-13.8</b>	<b>0.9</b>

Table-4

**PROVINCE/SECTOR AND METHOD WISE PERFORMANCE OF CONTRACEPTIVE DELIVERY SERVICES  
FOR THE PERIOD APRIL - JUNE 2011 OVER JANUARY - MARCH, 2011**

PROVINCE/ SECTOR	CONDOM (Units)			ORAL PILL (Cycles)			IUD (Insertions)		
	APRIL-JUNE 2011	JAN-MAR 2011	% CHANGE	APRIL-JUNE 2011	JAN-MAR 2011	% CHANGE	APRIL-JUNE 2011	JAN-MAR 2011	% CHANGE
	2	2	4	2	2	7	8	9	10
PUNJAB	8,076,489	7,843,053	3.0	368,034	364,365	1.0	126,919	118,786	6.8
SINDH	3,717,752	3,699,775	0.5	206,541	202,281	2.1	35,982	30,209	19.1
KHYBER PAKHTUNKHWA	2,645,671	2,548,037	3.8	177,776	172,431	3.1	46,081	41,321	11.5
BALUCHISTAN	674,763	651,901	3.5	42,453	42,291	0.4	4,396	3,724	18.0
ISLAMABAD	216,242	199,963	8.1	10,537	11,331	-7.0	4,783	3,060	56.3
FATA	62,504	60,440	3.4	6,506	6,942	-6.3	1,201	1,433	-16.2
A.J.K.	65,132	63,255	3.0	4,787	3,861	24.0	1,444	1,081	33.6
GILGIT BALTISTAN (GB)	13,080	8,673	50.8	2,937	2,365	24.2	406	323	25.7
RTIs	9,955	8,313	19.8	946	632	49.7	532	703	-24.3
NGO (FPAP)	174,343	150,882	15.5	32,461	22,783	42.5	27,931	28,948	-3.5
MARIE STOPES SOCIETY	21,125	22,113	-4.5	2,755	2,028	35.8	6,611	5,665	16.7
PPSO/TGIs	0	0	0.0	0	0	0.0	0	0	0.0
SMC	21,463,835	28,674,374	-25.1	716,232	689,430	3.9	58,838	46,987	25.2
<b>TOTAL</b>	<b>37,140,891</b>	<b>43,930,779</b>	<b>-15.5</b>	<b>1,571,965</b>	<b>1,520,740</b>	<b>3.4</b>	<b>315,124</b>	<b>282,240</b>	<b>11.7</b>
PROVINCE/ SECTOR	INJECTABLE (Vials)			CON. SURGERY (Cases)			COUPLE YEARS OF PROTECTION (CYP)		
	APRIL-JUNE 2011	JAN-MAR 2011	% CHANGE	APRIL-JUNE 2011	JAN-MAR 2011	% CHANGE	APRIL-JUNE 2011	JAN-MAR 2011	% CHANGE
	12	12	14	15	15	17	18	18	20
PUNJAB	150,932	163,747	-7.8	18,335	17,105	7.2	784,213	741,070	5.8
SINDH	119,920	129,949	-7.7	6,886	8,545	-19.4	275,583	277,712	-0.8
KHYBER PAKHTUNKHWA	114,273	113,925	0.3	1,578	1,579	-0.1	234,088	216,336	8.2
BALUCHISTAN	11,332	10,665	6.3	368	474	-22.4	29,768	28,438	4.7
ISLAMABAD	8,703	9,176	-5.2	351	355	-1.1	25,073	19,127	31.1
FATA	4,245	4,184	1.5	1	0		5,933	6,735	-11.9
A.J.K.	5,205	4,574	13.8	78	29	169.0	7,841	5,757	36.2
GILGIT BALTISTAN (GB)	5,395	4,846	11.3	0	0	0.0	2,787	2,318	20.2
RTIs	968	1,155	-16.2	0	0	0.0	2,188	2,791	-21.6
NGO (FPAP)	86,635	78,061	11.0	922	979	-5.8	129,985	131,734	-1.3
MARIE STOPES SOCIETY	1,744	1,417	23.1	0	0		23,818	20,400	16.8
PPSO/TGIs	0	0	0.0	0	0		0	0	0.0
SMC	216,356	237,858	-9.0	1,841	5,069	0.0	469,020	520,478	-9.9
<b>TOTAL</b>	<b>725,708</b>	<b>759,557</b>	<b>-4.5</b>	<b>30,360</b>	<b>34,135</b>	<b>-11.1</b>	<b>1,990,296</b>	<b>1,972,896</b>	<b>0.9</b>

Table-5

**OUTLETS/SECTOR WISE PERFORMANCE OF CONTRACEPTIVE DELIVERY SERVICES  
FOR THE PERIOD APRIL - JUNE 2011 OVER JANUARY - MARCH 2011**

CATEGORY OF SERVICE OUTLETS/ PROVINCE	CONDOM (Units)			ORAL PILL (Cycles)			IUD (Insertions)		
	APRIL-JUNE 2011	JAN-MAR 2011	% CHANGE	APRIL-JUNE 2011	JAN-MAR 2011	% CHANGE	APRIL-JUNE 2011	JAN-MAR 2011	% CHANGE
1	2	2	4	5	5	7	8	8	10
<b>FAMILY WELFARE CENTRES (FWC)</b>									
PUNJAB	4723202	4632741	2.0	222889	228566	-2.5	100337	92957	7.9
SINDH	2449032	2436118	0.5	118708	115993	2.3	28414	23065	23.2
KHYBER PAKHTUNKHWA	1731582	1655427	4.6	121362	117015	3.7	40131	35840	12.0
BALUCHISTAN	380581	342558	11.1	22781	20338	12.0	2424	2035	19.1
ISLAMABAD	119439	110319	8.3	6308	6749	-6.5	1881	1453	29.5
PAKISTAN	9403836	9177163	2.5	492048	488661	0.7	173187	155350	11.5
<b>REPRODUCTIVE HEALTH CENTRES-A (RHS-A)</b>									
PUNJAB	197106	197927	-0.4	14870	14232	4.5	7674	7655	0.2
SINDH	137083	142387	-3.7	11190	11480	-2.5	3161	3476	-9.1
KHYBER PAKHTUNKHWA	92973	97179	-4.3	7397	7318	1.1	2784	2611	6.6
BALUCHISTAN	25839	21688	19.1	1432	1601	-10.6	605	468	29.3
ISLAMABAD	23753	17872	32.9	947	1015	-6.7	369	270	36.7
PAKISTAN	476754	477053	-0.1	35836	35646	0.5	14593	14480	0.8
<b>REPRODUCTIVE HEALTH CENTRES-B (RHS-B)</b>									
PUNJAB	0	0	0.0	0	0	0.0	0	0	0.0
SINDH	30	140	-78.6	0	1080	-100.0	0	28	-100.0
KHYBER PAKHTUNKHWA	1083	968	11.9	166	134	23.9	130	116	12.1
BALUCHISTAN	204	70	191.4	70	28	150.0	22	18	22.2
ISLAMABAD	3040	2800	8.6	165	150	10.0	90	60	50.0
PAKISTAN	4357	3978	9.5	401	1392	-71.2	242	222	9.0
<b>MOBILE SERVICE UNITS (MSU)</b>									
PUNJAB	174277	157349	10.8	12043	9912	21.5	9668	7913	22.2
SINDH	239492	236158	1.4	12281	12461	-1.4	3794	3192	18.9
KHYBER PAKHTUNKHWA	77276	73289	5.4	6127	5572	10.0	2786	2561	8.8
BALUCHISTAN	62346	60588	2.9	3671	3677	-0.2	1058	884	19.7
ISLAMABAD	432	0	0.0	71	0	0.0	55	0	0.0
PAKISTAN	553823	527384	5.0	34193	31622	8.1	17361	14550	19.3
<b>PROVINCIAL LINE DEPARTMENTS (PLDs)</b>									
PUNJAB	93457	50680	84.4	24919	20241	23.1	5443	8449	-35.6
SINDH	1756	6068	-71.1	770	1265	-39.1	409	155	163.9
KHYBER PAKHTUNKHWA	1426	1231	15.8	159	149	6.7	130	123	5.7
BALUCHISTAN	9396	14427	-34.9	769	1655	-53.5	287	319	-10.0
ISLAMABAD	4916	5200	-5.5	261	300	-13.0	264	180	46.7
PAKISTAN	110951	77606	43.0	26878	23610	13.8	6533	9226	-29.2
<b>REGISTER MEDICAL PRACTITIONERS (RMPs)</b>									
PUNJAB	224729	225788	-0.5	8239	8475	-2.8	3797	1812	109.5
SINDH	153098	127830	19.8	11174	9506	17.5	204	291	-29.9
KHYBER PAKHTUNKHWA	26129	23887	9.4	2155	1562	38.0	120	70	71.4
BALUCHISTAN	50890	55868	-8.9	2444	2282	7.1	0	0	0.0
ISLAMABAD	21632	26440	-18.2	2735	3087	-11.4	2124	1097	93.6
PAKISTAN	476478	459813	3.6	26747	24912	7.4	6245	3270	91.0
<b>HAKEEEMS &amp; HOMOEOPATHS (H&amp;H)</b>									
PUNJAB	168434	155451	8.4	5463	4773	14.5	0	0	0.0
SINDH	40272	37240	8.1	3213	2802	14.7	0	0	0.0
KHYBER PAKHTUNKHWA	16505	16030	3.0	1516	984	54.1	0	0	0.0
BALUCHISTAN	1658	2009	-17.5	154	144	6.9	0	0	0.0
PAKISTAN	226869	210730	7.7	10346	8703	18.9	0	0	0.0
<b>MALE MOBILIZER (MM)</b>									
PUNJAB	2495284	2423117	3.0	79611	78166	1.8	0	0	0.0
SINDH	696989	713834	-2.4	49205	47694	3.2	0	2	0.0
KHYBER PAKHTUNKHWA	698697	680026	2.7	38894	39697	-2.0	0	0	0.0
BALUCHISTAN	143849	154693	-7.0	11132	12566	-11.4	0	0	0.0
ISLAMABAD	43030	37332	15.3	50	30	66.7	0	0	0.0
PAKISTAN	4077849	4009002	1.7	178892	178153	0.4	0	2	0.0
<b>NON-GOVERNMENTAL ORGANIZATIONS (NGOs)</b>									
MARIE STOPES SOCIETY	174343	150832	15.6	32461	22783.0	42.5	27931	28948	-3.5
PUBLIC PRIVATE SECTOR ORGANIZATIONS (PPSO)	21125	22113	-4.5	2755	2028.0	35.8	6611	5665	16.7
SOCIAL MARKETTING OF CONTRACEPTIVES	0	0	0.0	0	0.0	0.0	0	0	0.0
A.J.K.	21463835	28674374	-25.1	716232	689430.0	3.9	58838	46987	25.2
GILGIT BALTISTAN (GB)	65132	63255	3.0	4787	3861.0	24.0	1444	1081	33.6
REGIONAL TRAINING INSTITUTES (RTIs)	13080	8673	50.8	2937	2365.0	24.2	406	323	25.7
FATA	9955	8313	19.8	946	632.0	49.7	532	703	-24.3
FATA	62504	60440	3.4	6506	6942.0	-6.3	1201	1433	-16.2
<b>TOTAL ALL OUTLETS</b>	<b>37140891</b>	<b>43930729</b>	<b>-15.5</b>	<b>1571965</b>	<b>1520740</b>	<b>3.4</b>	<b>315124</b>	<b>282240</b>	<b>11.7</b>

CATEGORY OF SERVICE OUTLETS/ PROVINCE	INJECTABLE (Vials)			CON. SURGERY (Cases)			COUPLE YEARS OF PROTECTION		
	APRIL-JUNE 2011	JAN-MAR 2011	% CHANGE	APRIL-JUNE 2011	JAN-MAR 2011	% CHANGE	APRIL-JUNE 2011	JAN-MAR 2011	% CHANGE
11	12	12	14	15	16	17	18	18	20
<b>FAMILY WELFARE CENTRES (FWC)</b>									
PUNJAB	113890	123727	-8.0	0	0	0.0	421617	397504	6.1
SINDH	97065	106590	-8.9	0	0	0.0	143783	126696	13.5
KHYBER PAKHTUNKHWA	98085	96154	2.0	0	0	0.0	180191	163968	9.9
BALUCHISTAN	6252	5831	7.2	0	0	0.0	13896	12023	15.6
ISLAMABAD	3713	3735	-0.6	0	0	0.0	8576	7049	21.7
PAKISTAN	319005	336037	-5.1	0	0	0.0	768063	707240	8.6
<b>REPRODUCTIVE HEALTH CENTRES-A (RHS-A)</b>									
PUNJAB	9027	9413	-4.1	13998	8847	58.2	206000	165536	24.4
SINDH	10038	10180	-1.4	5547	4693	18.2	84107	85494	-1.6
KHYBER PAKHTUNKHWA	7535	7607	-0.9	1181	624	89.3	27152	28485	-4.7
BALUCHISTAN	1418	1365	3.9	250	278	-10.1	5801	6806	-14.8
ISLAMABAD	455	461	-1.3	253	246	2.8	4773	4279	11.5
PAKISTAN	28473	29026	-1.9	21229	14688	44.5	327832	290599	12.8
<b>REPRODUCTIVE HEALTH CENTRES-B (RHS-B)</b>									
PUNJAB	0	0	0.0	4337	8232	-47.3	54213	79275	-31.6
SINDH	18	465	-96.1	1339	4044	-66.9	16741	37539	-55.4
KHYBER PAKHTUNKHWA	83	225	-63.1	397	412	-3.6	5453	3542	54.0
BALUCHISTAN	130	157	-17.2	118	70	68.6	1584	1384	14.4
ISLAMABAD	130	130	0.0	98	106	-7.5	1598	1653	-3.3
PAKISTAN	361	977	-63.1	6289	12864	-51.1	79589	123393	-35.5
<b>MOBILE SERVICE UNITS (MSU)</b>									
PUNJAB	10274	9400	9.3	0	0	0.0	37906	31329	21.0
SINDH	9996	10696	-6.5	0	0	0.0	17760	15782	12.5
KHYBER PAKHTUNKHWA	6060	5792	4.6	0	0	0.0	11908	11002	8.2
BALUCHISTAN	2664	2483	7.3	0	0	0.0	4913	4256	15.4
ISLAMABAD	4	0	0.0	0	0	0.0	201	0	0.0
PAKISTAN	28998	28371	2.2	0	0	0.0	72689	62370	16.5
<b>PROVINCIAL LINE DEPARTMENTS (PLDs)</b>									
PUNJAB	9990	13687	-27.0	0	0	0.0	23359	34010	-31.3
SINDH	997	338	195.0	0	0	0.0	1694	737	130.0
KHYBER PAKHTUNKHWA	164	157	4.5	0	0	0.0	508	480	5.8
BALUCHISTAN	699	694	0.7	0	0	0.0	1261	1466	-14.0
ISLAMABAD	858	864	-0.7	0	0	0.0	1147	859	33.6
PAKISTAN	12708	15740	-19.3	0	0	0.0	27969	37552	-25.5
<b>REGISTER MEDICAL PRACTITIONERS (RMPs)</b>									
PUNJAB	7751	7520	3.1	0	0	0.0	16950	9979	69.9
SINDH	1656	1530	8.2	0	0	0.0	2853	2846	0.3
KHYBER PAKHTUNKHWA	2346	3990	-41.2	0	0	0.0	1214	1313	-7.5
BALUCHISTAN	169	135	25.2	0	0	0.0	550	567	-3.0
ISLAMABAD	3543	3986	-11.1	0	0	0.0	8475	5026	68.6
PAKISTAN	15465	17161	-9.9	0	0	0.0	30043	19731	52.3
<b>HAKHEELS &amp; HOMOEOPATHS (H&amp;H)</b>									
PUNJAB	0	0	0.0	0	0	0.0	1534	1398	9.7
SINDH	150	150	0.0	0	0	0.0	524	475	10.2
KHYBER PAKHTUNKHWA	0	0	0.0	0	0	0.0	216	177	21.9
BALUCHISTAN	0	0	0.0	0	0	0.0	22	24	-7.5
PAKISTAN	150	150	0.0	0	0	0.0	2295	2074	10.7
<b>MALE MOBILIZER (MM)</b>									
PUNJAB	0	0	0.0	0	0	0.0	22636	22038	2.7
SINDH	0	0	0.0	0	0	0.0	8121	8144	-0.3
KHYBER PAKHTUNKHWA	0	0	0.0	0	0	0.0	7445	7369	1.0
BALUCHISTAN	0	0	0.0	0	0	0.0	1741	1912	-8.9
ISLAMABAD	0	0	0.0	0	0	0.0	302	261	15.7
PAKISTAN	0	0	0.0	0	0	0.0	40245	39724	1.3
<b>NON-GOVERNMENTAL ORGANIZATIONS (NGOs)</b>									
MARIE STOPES SOCIETY	86635	78061	11.0	922	915	0.8	129985	131734	-1.3
PUBLIC PRIVATE SECTOR ORGANIZATIONS (PPSO)	1744	1417	23.1	0	0	0.0	23818	20400	16.8
SOCIAL MARKETING OF CONTRACEPTIVES	0	0	0.0	0	0	0.0	0	0	0.0
A.J.K.	216356	237858	-9.0	1841	10438	-82.4	469020	520478	-9.9
GILGIT BALTIKISTAN (GB)	5205	4574	13.8	78	100	-22.0	7841	5757	36.2
REGIONAL TRAINING INSTITUTES (RTIs)	5395	4846	11.3	0	0	0.0	2787	2318	20.2
FATA	968	1155	-16.2	0	0	0.0	2188	2791	-21.6
	4245	4184	1.5	1	0	0.0	5933	6735	-11.9
<b>TOTAL ALL OUTLETS</b>	<b>725708</b>	<b>759557</b>	<b>-4.5</b>	<b>30360</b>	<b>39005</b>	<b>-22.2</b>	<b>1990296</b>	<b>1972896</b>	<b>0.9</b>

Table-6

## OUTLET WISE PERFORMANCE OF CONTRACEPTIVES FOR THE PERIOD APRIL - JUNE 2011

Category of Service Outlets/Province/Sector	NO. OF OUTLETS	CONDOM (Units)		ORAL PILL (Cycles)		IUD (Insertions)		INJECTABLE (Vials)		CON SURGERY (Cases)		CYP	
		APRIL-JUNE 2011	Per Outlet	APRIL-JUNE 2011	Per Outlet	APRIL-JUNE 2011	Per Outlet	APRIL-JUNE 2011	Per Outlet	APRIL-JUNE 2011	Per Outlet	APRIL-JUNE 2011	Per Outlet
<b>FWCs</b>													
PUNJAB	1500	4723202	3149	222889	149	100337	67	113890	76	0	0	421617	281
SINDH	590	2449032	4151	118708	201	28414	48	97065	165	0	0	143783	244
KHYBER PAKHTUNKHWA	422	1731582	4103	121362	288	40131	95	98085	232	0	0	180191	427
BALUCHISTAN	155	380581	2455	22781	147	2424	16	6252	40	0	0	13896	90
ISLAMABAD	29	119439	4119	6308	218	1881	65	3713	128	0	0	8576	296
PAKISTAN	2696	9403836	3488	492048	183	173187	64	319005	118	0	0	768063	285
<b>RHS-A CENTRES</b>													
PUNJAB	74	197106	2664	14870	201	7674	104	9027	122	13998	189	206000	2784
SINDH	47	137083	2917	11190	238	3161	67	10038	214	5547	118	84107	1790
KHYBER PAKHTUNKHWA	26	92973	3576	7397	285	2784	107	7535	290	1181	45	27152	1044
BALUCHISTAN	6	25839	4307	1432	239	605	101	1418	236	250	42	5801	967
ISLAMABAD	3	23753	7918	947	316	369	123	455	152	253	84	4773	1591
PAKISTAN	156	476754	3056	35836	230	14593	94	28473	183	21229	136	327832	2101
<b>MSUs</b>													
PUNJAB	117	174277	1490	12043	103	9668	83	10274	88	0	0	37906	324
SINDH	70	239492	3421	12281	175	3794	54	9996	143	0	0	17760	254
KHYBER PAKHTUNKHWA	30	77276	2576	6127	204	2786	93	6060	202	0	0	11908	397
BALUCHISTAN	34	62346	1834	3671	108	1058	31	2664	78	0	0	4913	145
ISLAMABAD	1	432	432	71	71	55	55	4	4	0	0	201	201
<b>PAKISTAN</b>	<b>252</b>	<b>553823</b>	<b>2198</b>	<b>34193</b>	<b>136</b>	<b>17361</b>	<b>69</b>	<b>28998</b>	<b>115</b>	<b>0</b>	<b>0</b>	<b>72689</b>	<b>288</b>

Table-7

PERCENTAGE DISTRIBUTION OF TOTAL CYP BY PROVINCE/SECTOR  
DURING APRIL - JUNE 2011

PROVINCE/SECTOR	CYP	% AGE
PUNJAB	784,213	39.40
SINDH	275,583	13.85
KHYBER PAKHTUNKHWA	234,088	11.76
BALUCHISTAN	29,768	1.50
ISLAMABAD	25,073	1.26
FATA	5,933	0.30
AJK	7,841	0.39
G.B.	2,787	0.14
RTIs	2,188	0.11
NGO (FPAP)	129,985	6.53
MARIE STOPES	23,818	1.20
PPSO/TGIs	-	0.00
SMC	469,020	23.57
<b>TOTAL</b>	<b>1,990,296</b>	<b>100.0</b>

**Table-8 PERCENTAGE DISTRIBUTION OF TOTALE CYP BY SERVICE OUTLET DURING APRIL-JUNE 2011**

OUTLETS/SECTOR	CYP	% AGE
FWC	768,063	38.59
RHS-A	327,832	16.47
RHS-B	79,589	4.00
MSU	72,689	3.65
PLDs	27,969	1.41
RMPs	30,043	1.51
H&H	2,295	0.12
MM	40,245	2.02
FATA	5,933	0.30
AJK	7,841	0.39
G.B.	2,787	0.14
RTIs	2,188	0.11
NGO (FPAP)	129,985	6.53
MARIE STOPES	23,818	1.20
PPSO/TGIs	-	0.00
SMC	469,020	23.57
<b>TOTAL</b>	<b>1,990,296</b>	<b>100.00</b>

**Table-9 PERCENTAGE DISTRIBUTION OF TOTAL CYP BY METHODS DURING APRIL - JUNE 2011**

METHODS	CYP	%AGE
CONDOM (Units)	257,923	12.96
ORAL PILL (Cycles)	104,798	5.27
IUD (Insertions)	1,102,934	55.42
INJECTABLE (Vials)	145,142	7.29
CON. SURGERY (Cases)	379,500	19.07
<b>TOTAL</b>	<b>1,990,296</b>	<b>100.00</b>

**Table-10 PROVINCE WISE FAMILY PLANNING AND MCH SERVICES DELIVERY FOR THE PERIOD APRIL - JUNE 2011**

PROVINCE/ FEDERAL TERRITORY	F.P CLIENTS	MOTHER CARE (Number of Clients)			GENERAL AILMENTS (Number of patients)			MCH CLIENTS	ALL CLIENTS
		Pre-Natal	Post-Natal	Total	Children	Adults	Total	(Col 5+8)	(Col.2+5+8)
1	2	3	4	5	6	7	8	9	10
PUNJAB	490,530	47,954	26,498	74,452	67,118	233,759	300,877	375,329	865,859
SINDH	328,644	42,066	38,993	81,059	215,569	0	215,569	296,628	625,272
KHYBER PAKHTUNKHWA	195,206	15,589	11,759	27,348	37,854	143,533	181,387	208,735	403,941
BALUCHISTAN	31,533	4,024	3,397	7,421	4,514	39,270	43,784	51,205	82,738
ISLAMABAD	11,396	1,015	583	1,598	4,408	17,004	21,412	23,010	34,406
AJK	6,066	1,445	1,019	2,464	3,492	4,421	7,913	10,377	16,443
G.B.	11,957	1,060	1,632	2,692	6,868	16,121	22,989	25,681	37,638
FATA	14,316	3,108	3,149	6,257	4,285	31,782	36,067	42,324	56,640
<b>TOTAL</b>	<b>1,089,648</b>	<b>116,261</b>	<b>87,030</b>	<b>203,291</b>	<b>344,108</b>	<b>485,890</b>	<b>829,998</b>	<b>1,033,289</b>	<b>2,122,937</b>