



CONTRACEPTIVE PERFORMANCE REPORT

JANUARY – MARCH, 2012

***GOVERNMENT OF PAKISTAN
STATISTICS DIVISION
PAKISTAN BUREAU OF STATISTICS
ISLAMABAD***

GENISIS OF THE REPORT

The Contraceptive Performance Report owes to continuous efforts of the following Pakistan Bureau of Statistics (PBS) Officers/Officials:

1. Dr. Bahrawar Jan, Deputy Director General
2. Ms. Rizwana Siddique, Chief Statistical Officer
3. Syed Adil Hashmi, Statistical Officer
4. Mr. Arshad Ahmad Khan, Research Supervisor
5. Mr. Mahmood-ul-Hasan, Statistical Investigator
6. Mr. Muhammad Qadeer Anwar, Data Entry Operator

PREFACE

Pakistan Bureau of Statistics (PBS) is a prime official agency of Pakistan which is responsible for collection, compilation and dissemination of reliable and timely statistical information to the policy makers, planners and researchers. It publishes a variety of reports, based on primary and secondary data, especially on economics and social aspects of the country.

The Quarterly Contraceptive Performance Report (January – March, 2012) encompasses the contraceptive performance at all service delivery points, under Population Welfare Programme in the country. The Pakistan Bureau of Statistics (PBS) aims at ensuring nationwide coverage of Family Planning/Reproductive Health activities. The quarterly contraceptive performance report is an important intervention to gauge outlet-wise, source-wise and method-wise contraceptive progress and observe the direction and track/trend for future Contraceptive Requirement and Distribution (CRD) in the country.

Above all, I am grateful to Provincial Population Welfare Departments (PPWDs), the District Population Welfare Office, Islamabad Capital Territory (ICT), Population Welfare Department Azad Jammu & Kashmir (AJK), Population Welfare Programme Gilgit-Baltistan(GB), Social Marketing of Contraceptive (SMC) and other stakeholders for their support in this important input of contraceptive usage.

I hope, the user of the report would be able to learn about important facts on contraceptive activities and will assist in the field of population and development. Comments and suggestions for improvement of Contraceptive Performance Report would be highly appreciated.

Arif Mahmood Cheema
Director General
Pakistan Bureau of Statistics
Statistics Division
Government of Pakistan

CONTENTS

	Page No.
PREFACE	iii
CONTENTS	v
SUMMARY	vii
INTRODUCTION	1
Methodology	1
Concept and Definitions	2
Data Sources	3
RESULTS AND DISCUSSION	4
1. Source -wise Contraceptive Performance in terms of Couple Years of Protection	4
2. Method- wise Contraceptives Performance in terms of Couple Years of Protection	4
3. Source and Method-wise Performance of Contraceptive Delivery Services	5
4. Outlet-wise Performance in terms of Couple Years of Protection	6
5. Comparative outlet-wise Contraceptive Performance for Delivery Services	6-8
<i>i. Family Welfare Centers (FWCs)</i>	7
<i>ii. Reproductive Health Services Centers (RHS-A)</i>	8
<i>iii. Reproductive Health Services Centers (RHS-B)</i>	8
<i>iv. Mobile Service Units (MSUs)</i>	8
<i>v. Provincial Line Departments (PLDs) including outlets of Health Department</i>	8
<i>vi. Registered Medical Practitioners (RMPs)</i>	8
<i>vii. Hakeems and Homoeopaths (H&H)</i>	9
<i>viii. Male Mobilizer</i>	9
<i>ix. Non-Governmental Organization (NGO)-FPAP</i>	9
<i>x. Azad Jammu & Kashmir (AJK)</i>	9
<i>xi. Gilgit – Baltistan (GB)</i>	9
<i>xii. Federally Administered Tribal Areas(FATA)</i>	9
6. Method and Outlets- wise Average performance	10
<i>i. Average performance per FWC by method</i>	10
<i>ii. Average performance per RHS-A by method</i>	11
<i>iii. Average performance per MSU by method</i>	12
7. Percentage Distribution of Total CYP by Province/Sector During the Current Quarter	13
8. Percentage Distribution of Total CYP by Service Outlets During the Current Quarter	13
9. Percentage Distribution of Total CYP of Contraceptive Performance by Methods during the Current Quarter	13
10. Province-Wise Family Planning and Mother & Child Health (MCH) Services Delivery	13
STATISTICAL TABLES	15-25

SUMMARY

The profile of contraceptive performance in the quarter January – March, 2012, compared with the same period of 2011 as well as with the previous quarter (October – December 2011) is summarized as under:-

- The overall contraceptive Performance for the quarter of January – March, 2012 in terms of Couple Years of Protection (CYP) in comparison with the corresponding quarter of the last year (January – March, 2011) increases by (9.5%). However, the current quarter performance vis a vis the previous quarter (October - December, 2011), increases by 2.3%.
- The Source-wise increase in Punjab (18.8%), Khyber Pakhtunkhwa (13.0%), Balochistan (3.1%), Islamabad (59.2%), FATA (16.6%) AJK (11.0%) and GB (10.2%) while decline in Sindh (2.4%) has been registered in the quarter (January – March, 2012) as compared to corresponding quarter of last year. On the other hand, contraceptive performance in this quarter (January – March, 2012) in comparison with previous quarter (October - December, 2011), has shown increase in all provinces i.e. Punjab (17.3%), Sindh (14.7%), Khyber Pakhtunkhwa (14.1%) and Balochistan (15.7%), similarly increasing trend has been observed in Islamabad (38.9%), FATA (6.2%), AJK (6.0%) and Gilgit-Baltistan (17.8%).
- Method-wise profile has shown an increase in Oral Pills (5.1%) and IUDs (25.2%) and Contraceptive Surgery (0.6%). While decrease has been observed in Condoms (20.5%) and Injectables (4.2%) in the quarter (January – March, 2012) as compared to corresponding quarter of last year. However, comparison of current quarter (January – March, 2012) with previous quarter (October - December, 2011), has shown increase in Oral Pills (5.5%), IUDs (6.2%), Injectables (10.2%) and Contraceptive Surgery (18.2%) while depicts decrease in Condoms (31.2%).
- The outlet-wise service delivery performance during January – March, 2012 when compared with the corresponding quarter of the last year has shown increase in Family Welfare Centers (FWCs) (15.6%), Reproductive Health Services-A Centers (RHS-A) (38.5%), Mobile Service Units (MSUs) (12.7%), Hakeem & Homoeopaths (H&H) (23.0%), Male Mobilizers (MM) (8.1%), Registered Medical Practitioners (RMPs) (70.0 %), FATA (16.6%), AJK (11.0%), Gilgit-Baltistan (10.2%) and Family Planning Association Of Pakistan (FPAP) (24.6%), while decrease in RHS-B centers (49.8%), Provincial Line Departments (PLDs) (36.0%), Regional Training Institutes (RTIs) (36.9 %), Marie Stopes Society of Pakistan (22.1%) and Social Marketing of Contraceptives (SMC) (2.7%) has been witnessed.

INTRODUCTION

The rapid population growth is the main obstacle to a country's social progress, economic stability, health, environment, law & order and food security. Pakistan having the highest population growth is the sixth most populous country in the world. Moreover, Pakistan is making the third highest annual net addition to the global population after India and China. The country's high fertility rate is a major contributor to this situation since mortality rate has been fairly stable over the years.

The country is under heavy stress due to rapid growth in population. Therefore, an immediate action is required to curb the increasing trend of population. The provision of quality contraceptives and its easy access will help to reduce the Total Fertility Rate and consequently to control the population. This report is on the usage of contraceptives that are provided in the market from the government as well as from private outlets.

The main objectives of the report are as following:

- To assess the Source-wise, method-wise and outlet-wise contraceptives performance.
- To provide basis for annual contraceptives requirements and distribution in the country.

Methodology

As per past practice in the Ministry of Population Welfare, the Pakistan Bureau of Statistics collects the contraceptive performance data on monthly basis by post, fax and through e-mail from the Provincial Population Welfare Departments (PPWDs); Population Welfare Departments AJK, GB, FATA; District Population Welfare Office, Islamabad (ICT); Family Planning Association of Pakistan (FPAP); Marie Stopes Society of Pakistan (NGO); Social Marketing of Contraceptive (SMC); and Regional Training Institutes (RTIs). After editing and coding, the data is being entered on monthly basis and then processed according to tabulation plan at Data Processing Centre of PBS. At the end of quarter, monthly data is consolidated into the quarterly data. On the basis of quarterly data, contraceptive performance report is prepared. In this report, the percentage change in the quarter under report (January – March, 2012) is compared with the corresponding quarter of last year as well as with the previous quarter of the current year. This report on Contraceptive Performance is for the quarter January – March, 2012.

Concepts and Definitions

In this report, the following concepts and definitions have been used:

Family Welfare Centre (FWC): The FWC is the cornerstone of Pakistan's Population Welfare Programme. These centres constitute the most extensive institutional network in the country for promoting and delivering family planning services in both urban and rural areas. As a static facility, it serves a population of about 7000; while operating through its satellites clinics and outreach facility, an FWC covers a population of about 12000.

Reproductive Health Services (RHS) Centres : The Reproductive Health Service Centers are the major clinical component of the Pakistan's Population Welfare Programme. They provide services through RHS-A Centers and RHS-B Centers.

The RHS-A centers are hospital-based service delivery units in the government sector. They provide contraceptive surgery facilities for women and men with safe and effective backup medical support. The RHS-B centres are Well-established hospitals and clinics in the private sector. These have fully-equipped operating facilities (operation theatre facilities, beds for admission, post-operative care, sterilization and emergency resuscitation equipment, etc.) and trained work force.

Mobile Service Units (MSUs): The MSUs are the flagship of the Population Welfare Programme. They provide a package of quality Family Planning/Reproductive Health (FP/RH) services to the people of those remote villages and hamlets where no other health facility exists. The MSUs operate through specially-designed vehicles which carry with-in them all the facilities of a mini clinic ensuring complete privacy for simple gynecological procedures.

Regional Training Institutes (RTIs): The RTIs provide skill-based training in FP/RH for all categories of health care providers i.e. Doctors, medical students, nurses, student nurses, lady health visitors and other paramedics. The RTIs also undertake activities focused on raising the awareness about the level of hakims, homeopaths, community health workers, teachers and college students.

Provincial Line Departments (PLDs): The Health outlets of PLDs have been involved in the Population Welfare Programme for provision of services in order to improve access and expand coverage of facilities for promotion of family planning.

Couple Years of Protection (CYP): The term Couple Years of Protection (CYP) is one of several commonly used indicators to assess international family planning efforts. It is the protection provided by contraceptive methods during one-year period, based upon the volume of all contraceptives sold or distributed free of charge to clients during that period. It is also an indirect estimator of birth control.

CONVERSION FORMULA FOR CONTRACEPTIVE USAGE INTO COUPLE YEARS OF PROTECTION (CYP)		
CONDOM	NO. OF UNITS / 144	= 1 CYP
ORAL PILL	NO. OF CYCLES / 15	= 1 CYP
IUD	NO. OF INSERTIONS x 3.5	= 1 CYP
INJECTABLE	NO. OF VIALS / 5	= 1 CYP
CONTRACEPTIVE SURGERY (CS)	NO. OF CASES x 12.5	= 1 CYP

Data Sources

The Contraceptive Performance Report is prepared on the basis of data received from the following sources:

- Provincial Population Welfare Departments (PPWDs);
- Population Welfare Departments AJK, GB and FATA;
- The District Population Welfare Office, ICT, Islamabad
- Family Planning Association of Pakistan (FPAP) ;
- Marie Stopes Society of Pakistan (NGO);
- Social Marketing of Contraceptive (SMC) and
- Regional Training Institutes (RTIs).

RESULTS AND DISCUSSION

1. Source-Wise Contraceptive Performance In Terms Of Couple Years Of Protection

The source-wise comparison of contraceptive performance during current quarter (January - March, 2012) in terms of Couple Year of Protection (CYP) has been made with corresponding quarter of the previous year, and also with the previous quarter (October -December, 2011) by calculating percentage change for the respective period. **Table-1** given at the end of report is referred, in this regard.

At National level, an increase of 9.5% has been recorded for all program and non-program outlets during the current quarter (January -March, 2012) as compared to corresponding quarter of 2011. However when performance was compared with the previous quarter (October -December, 2011), it depicted an increase of 2.3%.

On reviewing the scenario at provincial Population Welfare Departments, an increase has been observed in the performance of Punjab (18.8%), Khyber Pakhtunkhwa (13.0%) and Balochistan (3.1%), while decrease has been witnessed in Sindh (2.4%) when compared to corresponding quarter of 2011. On comparison with previous quarter, an increase has been noticed in all provinces Punjab (17.3%), Sindh (14.7%), Khyber Pakhtunkhwa (14.1%) and Balochistan (15.7%).

For Islamabad, significant increase of 59.2% over the corresponding quarter of the last year and 38.9 % over previous quarter has been recorded for January -March, 2012. An increase of 16.6% has been observed for FATA in the current quarter as compared to corresponding quarter of the last year and increase of 6.2% over previous quarter (October -December, 2011).

An increase of 11.0% was recorded in current quarter with respect to corresponding quarter of 2011 for AJK and 10.2% was observed for Gilgit-Baltistan. Moreover, an increase of 6.0% and 17.8% was witnessed in current quarter over previous quarter, for AJK and Gilgit-Baltistan respectively. For NGO sector, an increase has been recorded in the performance of Family Planning Association of Pakistan (FPAP) (24.6%) and decrease in the performance of Marie Stopes Society of Pakistan (22.1%) over the corresponding quarter of the last year. While comparing over previous quarter (October -December, 2011), FPAP depicted an increase of 15.2% and Marie Stopes Society of Pakistan has been shown decrease of 32.9%.

2. Method-wise Contraceptives Performance In Terms Of Couple Years Of Protection

In absolute terms, the Contraceptive Performance of Program and Non-Program service outlets reported a sale of 34.933 million units of Condoms, 1.599 million cycles of Oral Pills, 0.353

million insertions of Internal Urine Devices (IUDs) and 0.728 million vials of Injectables. Also 34,325 cases of Contraceptive Surgery were performed during the current quarter.

The method-wise analysis, in term of CYP, compared with the corresponding quarter of 2011 showed an increase in Oral pills (5.1%) , in IUDs (25.2%) and in Contraceptive Surgery cases (0.6%) whereas decrease in Condoms (20.5%) and Injectables (4.2%). Performance compared with the previous quarter (October -December, 2011) showed increase in Oral Pill (5.5%), IUDs (6.2%) , Injectables (10.2)% and Contraceptives Surgeries by (18.2%), whereas performance of Condoms decreased (31.2%). The details are shown in **Table-2**.

3. Source and Method-wise Performance of Contraceptive Delivery Services

For the condoms, an increase has been observed in Punjab (5.8%), Sindh (6.4%), Khyber Pakhtunkhwa (6.9%), Balochistan by (8.4%), Islamabad (3.6%), FATA (16.7%), Family Planning Association of Pakistan (FPAP) (20.8%), whereas a decrease has been recorded in AJK (9.9%), Gilgit-Baltistan (31.0%), RTIs (11.7%), Marie Stopes Society (42.6%) and SMC (49.4%) when performance of current quarter was compared with the previous quarter. When the performance compared with the corresponding quarter of 2011 it showed increase in Punjab (17.0%), Sindh (13.6%), Khyber Pakhtunkhwa (18.0%), Islamabad (27.3%), FATA (67.6%), RTIs (11.1%), FPAP (50.8%) and whereas a decrease is observed in Balochistan (13.1%), AJK (4.0 %), Gilgit-Baltistan (13.1%), Marie Stopes Society (46.6%) and SMC (39.6%).

For Oral Pills, increase has been witnessed in Punjab (6.0%), Sindh (2.4%), Khyber Pakhtunkhwa (7.2%), in Balochistan (12.0%), FATA (19.6%), AJK (33.4%), Gilgit-Baltistan (36.6%), FPAP (40.0%) and SMC (4.0%), whereas a decrease Islamabad (3.5%), RTIs (9.4%), Marie Stopes Society (10.2%) has been recorded when performance of current quarter was compared with the previous quarter. When the performance was compared with the corresponding quarter of 2011 it showed an increase in Punjab (5.3%), Sindh (1.0%), Khyber Pakhtunkhwa (14.9%), FATA (42.2%), AJK (14.3%), Gilgit-Baltistan (49.5%), FPAP (52.2%), Marie Stopes Society (41.5%) and SMC (3.0%) whereas a decrease has been observed in Balochistan (17.1%) and RTIs (7.1%).

For IUD, increase has been depicted in Punjab (21.1%), Sindh (18.1%), Khyber Pakhtunkhwa (16.5%), Balochistan (19.5%), Islamabad (50.2%), AJK (6.9%), Gilgit-Baltistan (41.4%), FPAP (14.5%), whereas a decrease in FATA (2.2%), RTIs (30.7%), Marie Stopes Society

(33.4%) and SMC (21.4%) has been recorded, when performance of current quarter was compared with the previous quarter. When the performance was compared with the corresponding quarter of 2011, it showed increase in Punjab (16.2%), Sindh (15.5%), Khyber Pakhtunkhwa (20.5%), Balochistan (23.4%), Islamabad (91.6%), FATA (7.6%), AJK (3.7%), Gilgit-Baltistan (32.2%) FPAP (25.2%) and SMC (61.8%) whereas a decrease has been observed in RTIs (38.1%) and Marie Stopes Society (22.8%).

In case of Injectables, increase has been observed in Punjab (14.0%), Sindh (10.0%), Khyber Pakhtunkhwa (8.6%), Balochistan (8.8 %), Islamabad (29.2%), FATA (50.1%), AJK (2.8%), RTIs (8.3%), FPAP (5.8%), and SMC (10.2%), whereas a decrease in Gilgit-Baltistan (10.5%) and Marie Stopes Society (7.2%) has been recorded, when performance of current quarter was compared with the previous quarter. When the performance was compared with the corresponding quarter of 2011, it showed an increase in Balochistan 0.1%), Islamabad (4.3%), FATA (31.0%) FPAP (19.1%) Marie Stopes Society (6.0%) and SMC (11.6%), whereas decrease in Punjab (15.7%), Sindh (25.2%), Khyber Pakhtunkhwa (13.5%), AJK (12.2%), Gilgit-Baltistan (20.4%), RTIs (41.3%) has been depicted.

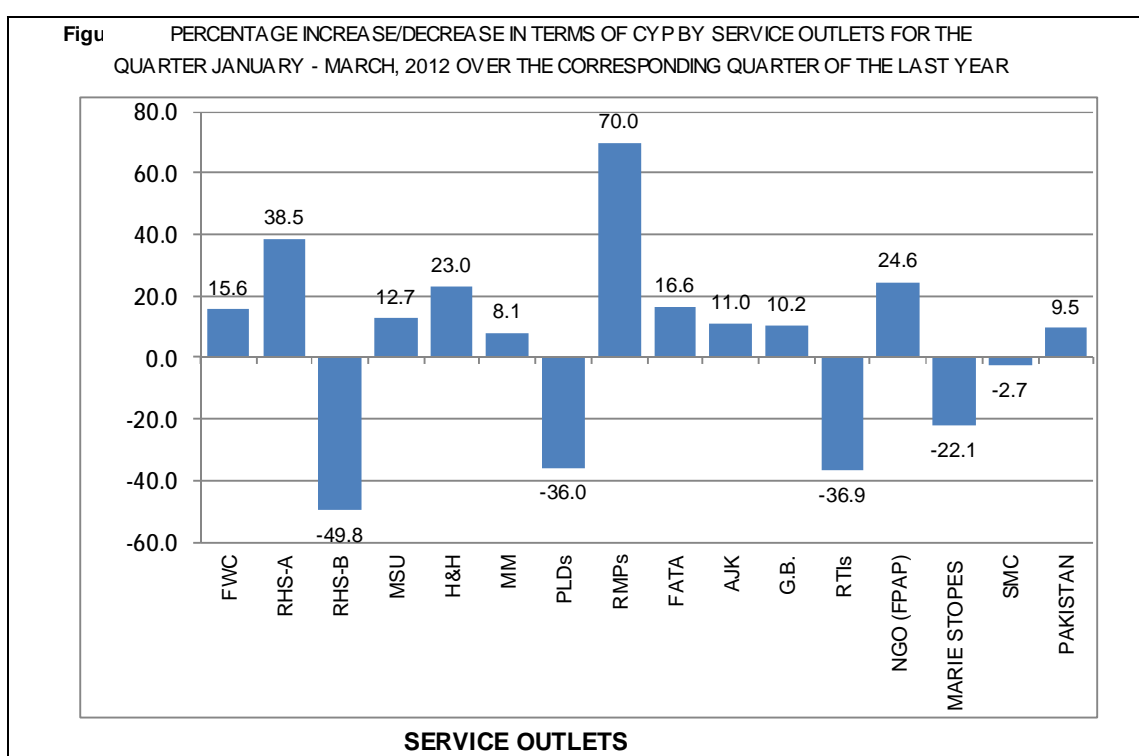
When it comes to Contraceptives Surgery cases, increase has been observed in in Punjab (15.5%) Sindh (16.5%), Khyber Pakhtunkhwa (12.7%), Balochistan (14.9 %), Islamabad (28.3%), AJK (7.0%), FPAP (32.7%), and SMC (79.1%) when performance of current quarter was compared with the previous quarter. When the performance was compared with the corresponding quarter of 2011, it showed increase in Punjab (31.0%), Islamabad (23.9%), AJK (162.1%), FPAP (20.9%) Whereas decrease in Sindh (18.9%), Khyber Pakhtunkhwa (17.2%), Balochistan (18.8%), and SMC (68.6%) has been observed. The details are reflected in **Table-3**.

4. Outlet-Wise Performance in Terms of Couple Year of Protection

The contribution of service outlets towards CYP during January -March, 2012 when compared with corresponding quarter of last year, showed an increase in Family Welfare Centers (FWCs 15.6%), Reproductive Health Services-A Centers (RHS-A 38.5%), Mobile Service Units (MSUs 12.7%), Hakeem & Homoeopaths-H&H (23.0%), Male Mobilizers-(MM 8.1%), Registered Medical Practitioners-RMPs (70.0 %), FATA (16.6%), AJK (11.0%), Gilgit-Baltistan (10.2%) and Family Planning Association Of Pakistan-FPAP (24.6%), whereas a drop of performance in RHS-B centers (49.8%), Provincial Line Departments-PLDs (36.0%), Regional Training Institutes-RTIs

(36.9 %), Marie Stopes Society of Pakistan (22.1%) and Social Marketing of Contraceptives-SMC (2.7%) has been observed.

The outlet-wise service delivery performance when compared with the previous quarter (October – December), 2011), it showed increase in FWCs (16.5%), RHS-A (22.0%), MSUs (9.7%) , H&H (13.0%), MM (8.3%), PLDs (16.6%), RMPs (65.7%), FATA (6.2%), AJK (6.0 %), Gilgit-Baltistan (17.8%) and FPAP (15.2%), whereas a drop of performance in RHS-B centers (10.9%), RTIs (27.8%), Marie Stopes Society of Pakistan (32.9%) and SMC (25.6%) has been observed. The details are given in **Table-4** and graphical presentation of data is as under:



5. Comparative Outlet-wise Contraceptives Performance For Delivery Services

The Outlets-wise Comparison of Performance of Contraceptives Delivery Services is depicted in **Table-5**. The details are as under:

- (i) **Family Welfare Centers (FWCs):** The performance of FWCs during the current quarter compared with the previous quarter in terms of CYP has been positive at national level by 16.5%. At provincial level, an increase is observed in all provinces Punjab (18.3%), Sindh (14.8%),

Khyber Pakhtunkhwa (14.1 %), Balochistan (15.7%) and Islamabad (10.5%) At national level, FWCs have shown an increase in condoms (4.9%), Oral Pills (5.7%) IUDs (19.4%) and Injectables (8.7%).

(ii) Reproductive Health Services Centers (RHS-A): The performance of RHS-A centers during current quarter compared with the previous quarter in terms of CYP has been positive at national level by 22.0%. At provincial level, an increase is observed in all provinces Punjab (27.0%), Sindh (13.3%), Khyber Pakhtunkhwa (8.4 %), Balochistan (17.5%) and Islamabad (7.1%) At national level, RHS-A have shown an increase in condoms (8.2%), Oral Pills (8.5%), IUDs (22.7%), Injectables (12.4%) and Contraceptive Surgery (22.4%).

(iii) Reproductive Health Services Centres (RHS-B): The performance of RHS-B centers of the current quarter compared with the previous quarter in terms of CYP has been decreased at national level by 10.9%. At provincial level, an increase is observed in Sindh (32.0%), Khyber Pakhtunkhwa (19.3 %) and Islamabad (80.6%) whereas decrease is observed in Punjab (24.0%), and Balochistan (30.6%). At national level, RHS-B has shown an increase in condoms (65.0%) and Injectables (79.6%) whereas decrease is observed in Oral Pills (37.5%), IUDs (24.8%) and Contraceptive Surgery (11.0%).

(iv) Mobile Service Units (MSUs): The performance of MSUs of the current quarter compared with the previous quarter in terms of CYP has been increased at national level by 9.7% and at provincial level, increase is observed in Sindh (20.6%), Khyber Pakhtunkhwa (21.7 %), Balochistan (21.9%) and Islamabad (81.2%) whereas decrease is depicted in Punjab (0.5%). At national level, MSUs have shown an increase in condoms (7.2%) Oral Pills (6.4%) IUDs (10.4%) and Injectables (5.3).

(v) Provincial Line Departments (PLDs): An increase has been reported in terms of CYP at national level by 16.6% whereas at Provincial level an increase is observed in Punjab (15.0%), Sindh (16.3%), Khyber Pakhtunkhwa (67.2%), Balochistan (8.3%) and Islamabad (58.5%). At national level, PLDs have shown increase in, IUDs (17.9%) whereas decrease is observed in condoms (20.0%), Oral Pills (17.9%) and Injectables (36.5%) .

(vi) Registered Medical Practitioners (RMPs): In terms of CYP, an increase has been observed in the performance of RMPs at national level by 65.7% and at provincial level, increase is observed in Punjab (67.1%) ,Sindh (4.9%), Khyber Pakhtunkhwa (47.7%) Balochistan (13.4%) and

Islamabad (95.0%). At national level, RMPs have shown increase in condoms (5.6%), Oral Pills (4.2%) and in IUDs (89.5%) whereas decrease is observed Injectables (27.3%).

(vii) Hakeems and Homoeopaths (H&H): In terms of CYP, an increase has been observed in the performance of H&H at national level by 13.0% and at provincial level, increase has been observed in Punjab (21.4%) and Khyber Pakhtunkhwa (7.4%), whereas decrease is observed in Sindh (11.2%) Balochistan (8.2%). At national level, H&H have shown an increase in condoms (17.7%) and Oral Pills (1.6%).

(viii) Male Mobilizer: In terms of CYP, an increase has been observed in the performance of Male Mobilizer at national level by 8.3% and at provincial level, increase has been observed in Punjab (9.8%), Sindh (1.0%), Khyber Pakhtunkhwa (12.1%) and Islamabad (15.0%). At national level, M&M have shown increase in condoms (8.6%) and Oral Pills (7.1%).

(ix) Family Planning Association of Pakistan (FPAP): The overall contraceptive performance has shown an increase by 15.2% in terms of CYP for FPAP compared with the previous quarter, the method-wise performance has shown an increase in Condoms (20.8%) and Oral Pills (40.0%) IUDs (14.5%), injectable (5.8%) and Contraceptive Surgery (32.7%),

(x) Azad Jammu & Kashmir (AJK): The contraceptive performance during the current quarter for AJK has increased in terms of CYP by 6.0%. In the method-wise performance increase has been observed in Oral Pills (33.4%), IUDs (6.9%) Injectables (2.8%) and C.S. cases (7.0%) whereas decrease in Condoms (9.9%), .

(xi) Gilgit – Baltistan (GB): An increase of 17.8% has been reported in terms of CYP during the current quarter for GB. In the method-wise performance increase has been observed in Oral Pills (36.6%) and IUDs (41.4%) whereas decrease in Condoms (31.0%), and Injectables (10.5%).

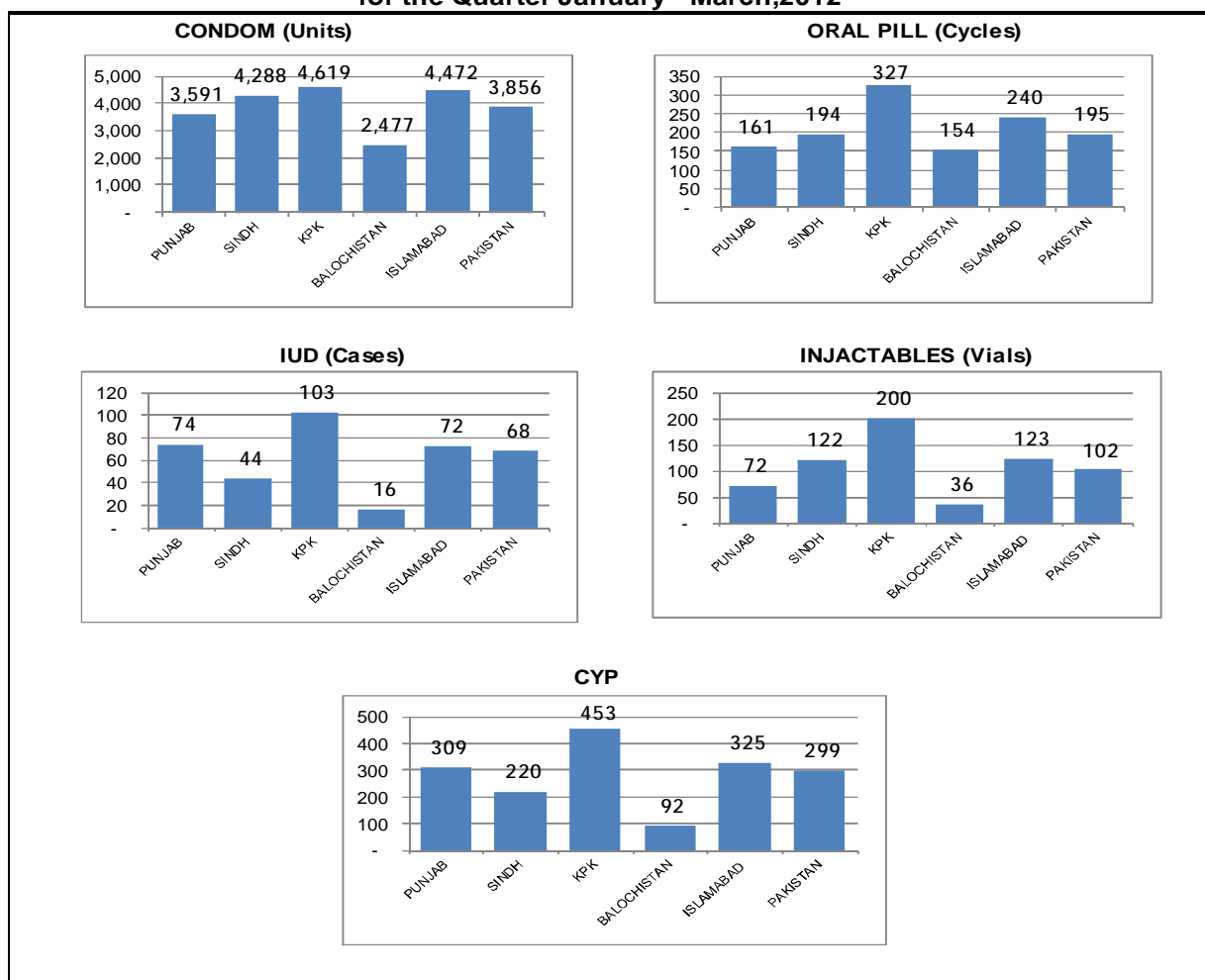
(xii) FATA: The contraceptive performance during the current quarter for FATA has reported an increase of 6.2% in terms of CYP. In the method-wise performance, an increase has observed for Condoms (16.7%), Oral Pills (19.6%), IUDs (119.3%) and Injectables (50.1%).

6. Method and Outlet-wise Average Performance

Method and Outlet-wise Average performance for the Federal and Provincial setup during the current quarter is given in **Table-6**. The details are as under:

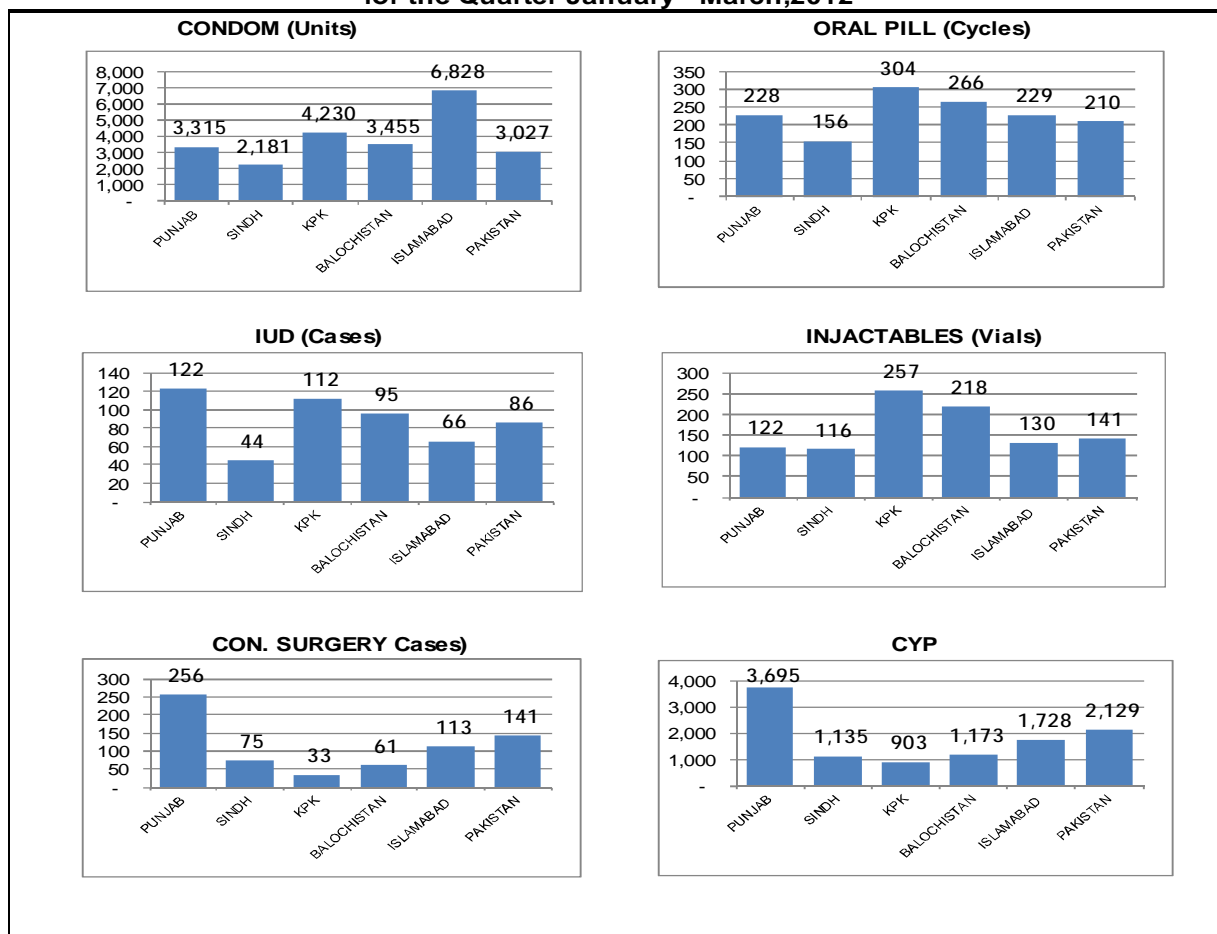
(i) *Average performance per FWC by method:* The average performance obtained for Condoms is 4619 units per FWC sold in Khyber Pakhtunkhwa followed by 4472 units in Islamabad, 4288 units in Sindh, 3591 units in Punjab and 2477 units in Balochistan. The maximum numbers i.e. 327 cycles of Oral Pills per FWC were dispensed by Khyber Pakhtunkhwa and the lowest 154 cycles were reported by FWCs of Baluchistan. The highest insertions of IUDs i.e. 103 per FWC have been reported in Khyber Pakhtunkhwa and the lowest figure reported is 16 by Balochistan. By looking at the figure for injectables, it is observed that the maximum number has been reported for Khyber Pakhtunkhwa as 200 vials per FWC while the minimum number i.e. 36 vial have been observed in Balochistan. When these contraceptives performances are translated into CYP, it is observed that on average, the highest number of CYP i.e. 453 has been reported by Khyber Pakhtunkhwa while the lowest i.e. 92 for Balochistan. The graphical presentation of each contraceptive method dispensed per FWC is presented below:

Figure-2 Average Achievement Per FWC by Method and Province for the Quarter January - March,2012

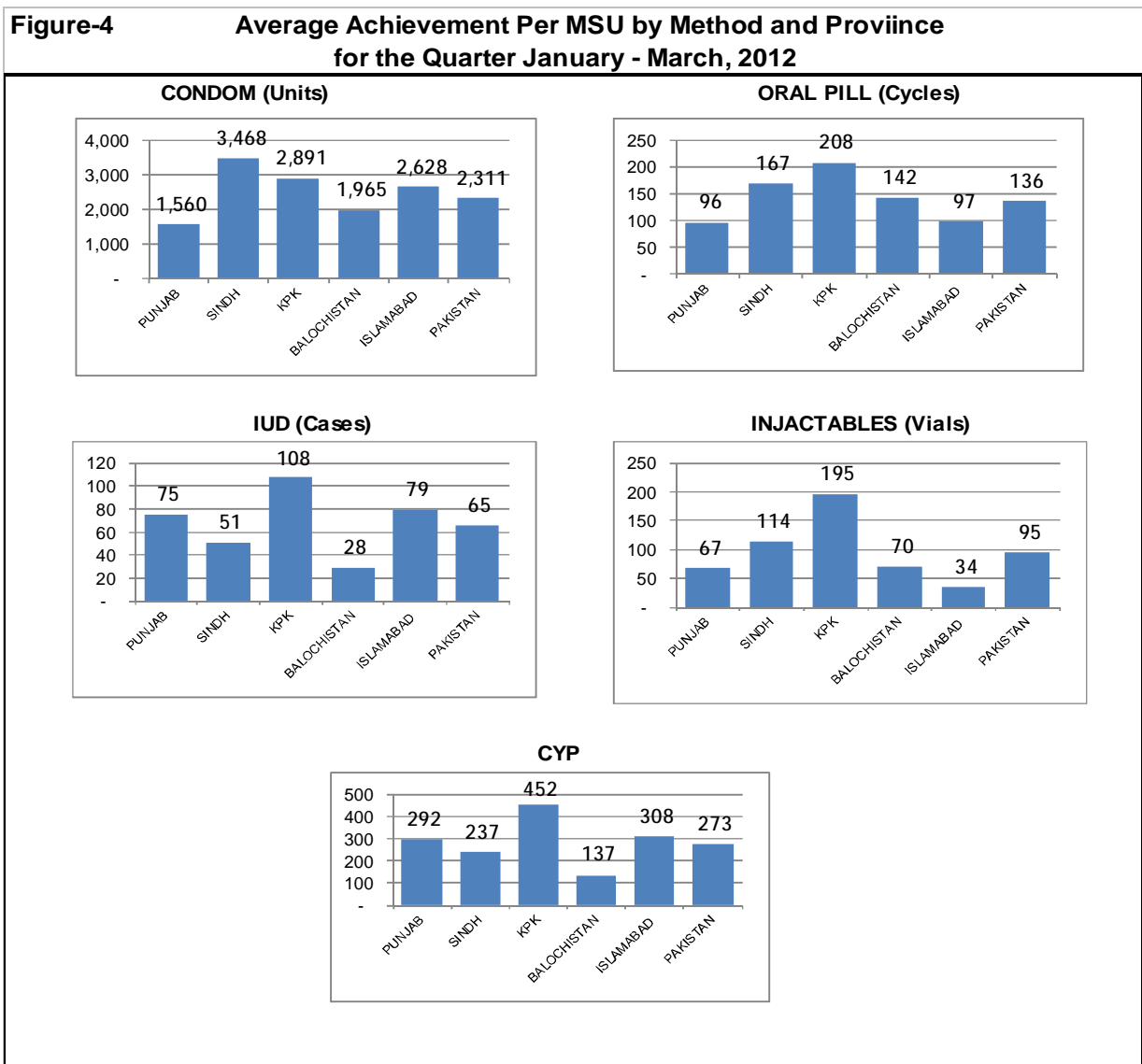


(ii) *Average performance per RHS-A by method:* The highest average achievement for Condoms per RHS-A is 6828 units sold in Islamabad followed by 4230 units in Khyber Pakhtunkhwa, 3455 units in Balochistan, 3315 units in Punjab and 2181 units in Sindh. The Reproductive Health Services-A Centres of Khyber Pakhtunkhwa were able to dispense maximum number i.e. 304 cycles of Oral Pills as compared to the lowest 156 cycles of Oral Pills by RHS-A of Sindh. The highest insertions of IUDs i.e.122 were reported by Punjab in comparison to lowest 44 insertions carried out by RHS-A in Sindh. The highest Injectables i.e. 257 vials were reported by Khyber Pakhtunkhwa in comparison to lowest 122 vials reported by RHS-A of Punjab. The highest Contraceptive Surgery cases were performed by Punjab i.e. 256 and the lowest i.e. 33 in Khyber Pakhtunkhwa. When the data of contraceptives performances is translated into CYP, it is observed that on average, the highest numbers of CYP have been calculated for Punjab i.e 3695 while the lowest 903 appeared for Khyber Pakhtunkhwa. The graphical presentation of each contraceptive method recorded per RHS-A is presented below:

Figure-3 Average Achievement Per RHS-A by Method and Province for the Quarter January - March,2012



(iii) **Average performance per MSU by method:** The highest average reported performance for Condoms per MSU is 3468 units in Sindh followed by 2891 units in Khyber Pakhtunkhwa, 2628 units in Islamabad, 1965 in Balochistan and 1560 in Punjab. The Mobile Service Unit of Khyber Pakhtunkhwa was able to dispense highest numbers of 208 cycles of Oral Pills as compared to the lowest 96 cycles of Oral Pills in Punjab. The highest reported insertions of IUDs i.e. 108 took place in Khyber Pakhtunkhwa compared to the lowest 28 IUDs in Balochistan. The highest numbers of Injectables 195 vials reported by Khyber Pakhtunkhwa as compared to lowest 34 vials reported by MSUs of Islamabad. When the contraceptive performance data is translated into CYP, it is observed that on the average, the highest numbers of CYP i.e. 452 were calculated for Khyber Pakhtunkhwa while the lowest were 137 for Balochistan. The graphical presentation of each contraceptive method as reported by MSUs is presented below:



7. Percentage Distribution Of Total CYP By Source During The Current Quarter

The percentage distribution of total CYP by Province/Sector during the current quarter reflected 40.74% in Punjab, 12.54% in Sindh, 11.31% in Khyber Pakhtunkhwa, 1.36% in Balochistan, 1.41% in Islamabad, 0.36% in FATA, 0.30% in AJK , 0.12% in Gilgit – Baltistan, 7.60% in FPAP and 23.45% in SMC . The details are given in **Table-7**.

8. Percentage Distribution Of Total CYP By Service Outlets During The Current Quarter

The percentage distribution of total CYP by Service outlets during the current quarter was 37.84% in FWCs, 18.63% in RHS-A, 2.87% in RHS-B, 3.25% in MSUs, 1.11% in PLDs and 1.55% in RMPs. The details are presented in the **Table-8**.

9. Percentage Distribution Of Total CYP Of Contraceptive Performance By Methods During The Current Quarter

The method-wise percentage contribution for IUDs, Contraceptive Surgery, Condom, Injectables and Oral Pills in terms of total CYP has been 57.24%, 19.86%, 11.23%, 6.74% and 4.93% respectively. The details are given in **Table-9**

10. Province-Wise Family Planning And Mother & Child Health (MCH) Services Delivery

The data indicates that during the quarter 2,106,543 clients availed Family Planning Services of various Contraceptive methods out of which the Family Welfare Centers provided the services to 116,621 clients for Pre-natal and 92,427 clients for Post-natal Care. Apart from these, FW Centers has provided treatment to 805,502 clients for General Ailments (Children + Adults). The details are given in **Table-10**.

STATISTICAL TABLES

LIST OF TABLES

- TABLE-1** SOURCE-WISE CONTRACEPTIVE PERFORMANCE IN TERMS OF CYP DURING JANUARY – MARCH, 2012 OVER THE PREVIOUS QUARTER AND CORRESPONDING QUARTER OF THE LAST YEAR.
- TABLE-2** METHOD-WISE PERFORMANCE IN TERMS OF CYP DURING JANUARY – MARCH, 2012 OVER THE PREVIOUS QUARTER AND CORRESPONDING QUARTER OF THE LAST YEAR.
- TABLE-3** SOURCE AND METHOD-WISE PERFORMANCE OF CONTRACEPTIVES DELIVERY SERVICES FOR THE PERIOD JANUARY – MARCH, 2012 OVER OCTOBER - DECEMBER, 2011
- TABLE-4** OUTLET-WISE PERFORMANCE IN TERMS OF CYP DURING JANUARY – MARCH, 2012 OVER THE PREVIOUS QUARTER AND CORRESPONDING QUARTER OF THE LAST YEAR.
- TABLE-5** OUTLET-WISE PERFORMANCE OF CONTRACEPTIVES DELIVER SERVICES FOR THE QUARTER JANUARY – MARCH, 2012 OVER OCTOBER - DECEMBER, 2011
- TABLE-6** OUTLET-WISE AVERAGE PERFORMANCE OF CONTRACEPTIVES FOR THE QUARTER JANUARY – MARCH, 2012.
- TABLE-7** PERCENTAGE DISTRIBUTION OF TOTAL CYP BY SOURCE FOR JANUARY – MARCH, 2012
- TABLE-8** PERCENTAGE DISTRIBUTION OF TOTAL CYP BY SERVICE OUTLET FOR JANUARY – MARCH, 2012
- TABLE-9** PERCENTAGE DISTRIBUTION OF TOTAL CYP BY METHODS FOR JANUARY – MARCH, 2012
- TABLE-10** PROVINCE-WISE FAMILY PLANNING AND MOTHER & CHILD HEALTH (MCH) SERVICES DELIVERY FOR THE JANUARY – MARCH, 2012.

Table-1

**SOURCE WISE PERFORMANCE IN TERMS OF CYP FOR THE QUARTER JANUARY- MARCH 2012
OVER THE PREVIOUS QUARTER AND CORRESPONDING QUARTER OF THE LAST YEAR**

SOURCE	COUPLE YEARS OF PROTECTION (CYP)			%age Change	
	JAN-MAR. 2012	JAN-MAR. 2011	OCT-DEC. 2011	JAN-MAR-2012 JAN-MAR-2011	JAN-MAR-2012 OCT-DEC. 2011
POPULATION WELFARE DEPARTMENTS					
PUNJAB	880,067	741,070	750,082	18.8	17.3
SINDH	270,958	277,712	236,130	-2.4	14.7
KHYBER PAKHTUNKHWA	244,448	216,336	214,185	13.0	14.1
BALUCHISTAN	29,308	28,438	25,331	3.1	15.7
ISLAMABAD	30,453	19,127	21,918	59.2	38.9
FATA	7,855	6,735	7,400	16.6	6.2
AJK	6,393	5,757	6,029	11.0	6.0
GILGIT BALTISTAN (GB)	2,554	2,318	2,168	10.2	17.8
SUB-TOTAL	1,472,035	1,297,493	1,263,241	129.5	130.9
REGIONAL TRAINING INSTITUTES (RTIs)	1,761	2,791	2,439	-36.9	-27.8
NON-GOVERNMENTAL ORGANIZATIONS (NGOs)					
FAMILY PLANNING ASSOCIATION OF PAKISTAN (FPAP)	164,163	131,734	142,483	24.6	15.2
MARIE STOPES SOCIETY OF PAKISTAN	15,883	20,400	23,654	-22.1	-32.9
SUB-TOTAL	180,046	152,134	166,137	18.3	8.4
OTHER					
SOCIAL MARKETING OF CONTRACEPTIVES (SMC)	506,581	520,478	681,060	-2.7	-25.6
PAKISTAN	2,160,423	1,972,896	2,112,877	9.5	2.3

Table-2

**METHOD WISE PERFORMANCE IN TERMS OF CYP FOR THE QUARTER JAN - MARCH 2012
OVER THE PREVIOUS QUARTER AND CORRESPONDING QUARTER OF THE LAST YEAR**

METHOD	OVERALL PERFORMANCE			%age Change	
	JAN-MAR. 2012	JAN-MAR. 2011	OCT-DEC. 2011	JAN-MAR-2012 JAN-MAR-2011	JAN-MAR-2012 OCT-DEC. 2011
CONDOM (Units)	34,933,167	43,930,729	50,809,952		
CYP	242,591	305,075	352,847	-20.5	-31.2
ORAL PILL (Cycles)	1,598,764	1,520,740	1,514,947		
CYP	106,584	101,383	100,996	5.1	5.5
IUD (Insertions)	353,311	282,240	332,536		
CYP	1,236,589	987,840	1,163,876	25.2	6.2
INJECTABLE (Vials)	727,983	759,557	660,414		
CYP	145,597	151,911	132,083	-4.2	10.2
CON. SURGERY (Cases)	34,325	34,135	29,046		
CYP	429,063	426,688	363,075	0.6	18.2
TOTAL CYP	2,160,423	1,972,896	2,112,877	9.5	2.3

Table-3

**SOURCE AND METHOD WISE PERFORMANCE OF CONTRACEPTIVE DELIVERY SERVICES
FOR THE PERIOD JANUARY - MARCH 2012 OVER OCTOBER - DECEMBER, 2011**

SOURCE	CONDOM (Units)			%age Change		ORAL PILL (Cycles)			%age Change		IUD (Insertions)			%age Change	
	JAN-MAR 2012	OCT-DEC 2011	JAN-MAR 2011	JAN-MR-2012 OCT-DEC-2011	JAN-MAR-2012 JAN-MAR-2011	JAN-MAR 2012	OCT-DEC 2011	JAN-MAR 2011	JAN-MR-2012 OCT-DEC-2011	JAN-MAR-2012 JAN-MAR-2011	JAN-MAR 2012	OCT-DEC 2011	JAN-MAR 2011	JAN-MR-2012 OCT-DEC-2011	JAN-MAR-2012 JAN-MAR-2011
	2	3	4	5	6	7	8	9	10	11	12	13	14	15	16
POPULATION WELFARE DEPARTMENTS															
PUNJAB	9,176,801	8,675,395	7,843,053	5.8	17.0	383,682	362,115	364,365	6.0	5.3	137,992	113,950	118,786	21.1	16.2
SINDH	4,201,354	3,949,153	3,699,775	6.4	13.6	204,350	199,554	202,281	2.4	1.0	34,896	29,551	30,209	18.1	15.5
KHYBER PAKHTUNKHWA	3,006,638	2,811,990	2,548,037	6.9	18.0	198,154	184,859	172,431	7.2	14.9	49,804	42,767	41,321	16.5	20.5
BALUCHISTAN	566,420	522,721	651,901	8.4	-13.1	35,042	31,287	42,291	12.0	-17.1	4,597	3,847	3,724	19.5	23.4
ISLAMABAD	254,457	245,677	199,963	3.6	27.3	11,326	11,734	11,331	-3.5	0.0	5,862	3,903	3,060	50.2	91.6
FATA	101,307	86,815	60,440	16.7	67.6	9,872	8,251	6,942	19.6	42.2	1,542	1,576	1,433	-2.2	7.6
A.J.K.	60,744	67,429	63,255	-9.9	-4.0	4,412	3,307	3,861	33.4	14.3	1,121	1,049	1,081	6.9	3.7
GILGIT BALTIKISTAN (GB)	7,536	10,915	8,673	-31.0	-13.1	3,535	2,588	2,365	36.6	49.5	427	302	323	41.4	32.2
SUB-TOTAL	17,375,257	16,370,095	15,075,097	6.8	15.3	850,373	803,695	805,867	113.7	5.5	236,241	196,945	199,937	171.4	18.2
RTIs	9,235	10,454	8,313	-11.7	11.1	587	648	632	-9.4	-7.1	435	628	703	-30.7	-38.1
NGOs															
NGO (FPAP)	227,473	188,293	150,832	20.8	50.8	34,678	24,775	22,783	40.0	52.2	36,250	31,656	28,948	14.5	25.2
MARIE STOPES SOCIETY	11,814	20,564	22,113	-42.6	-46.6	2,870	3,196	2,028	-10.2	41.5	4,374	6,564	5,665	-33.4	-22.8
SUB-TOTAL	239,287	208,857	172,945	14.6	38.4	37,548	27,971	24,811	34.2	51.3	40,624	38,220	34,613	6.3	17.4
OTHER															
SMC	17,308,388	34,220,546	28,674,374	-49.4	-39.6	710,256	682,633	689,430	4.0	3.0	76,011	96,743	46,987	-21.4	61.8
TOTAL	34,933,167	50,809,952	43,930,729	-31.2	-20.5	1,538,764	1,514,947	1,520,740	5.5	5.1	353,311	332,536	282,240	6.2	25.2
SOURCE	INJECTABLE (Vials)			%age Change		CON. SURGERY (Cases)			%age Change		COUPLE YEARS OF PROTECTION (CYP)			%age Change	
	JAN-MAR 2012	OCT-DEC 2011	JAN-MAR 2011	JAN-MR-2012 OCT-DEC-2011	JAN-MAR-2012 JAN-MAR-2011	JAN-MAR 2012	OCT-DEC 2011	JAN-MAR 2011	JAN-MR-2012 OCT-DEC-2011	JAN-MAR-2012 JAN-MAR-2011	JAN-MAR 2012	OCT-DEC 2011	JAN-MAR 2011	JAN-MR-2012 OCT-DEC-2011	JAN-MAR-2012 JAN-MAR-2011
	19	20	21	22	23	24	25	26	27	28	29	30	31	32	33
POPULATION WELFARE DEPARTMENTS															
PUNJAB	138,068	121,164	163,747	14.0	-15.7	22,414	19,411	17,105	15.5	31.0	880,067	750,082	741,070	17.3	18.8
SINDH	97,173	88,302	129,949	10.0	-25.2	6,927	5,945	8,545	16.5	-18.9	270,958	236,130	277,712	14.7	-2.4
KHYBER PAKHTUNKHWA	98,533	90,743	113,925	8.6	-13.5	1,307	1,160	1,579	12.7	-17.2	244,448	214,185	216,336	14.1	13.0
BALUCHISTAN	10,680	9,814	10,665	8.8	0.1	385	335	474	14.9	-18.8	29,308	25,331	28,438	15.7	3.1
ISLAMABAD	9,567	7,406	9,176	29.2	4.3	440	343	355	28.3	23.9	30,453	21,918	19,127	38.9	59.2
FATA	5,483	3,653	4,184	50.1	31.0	0	0	0	0.0	0.0	7,855	7,400	6,735	6.2	16.6
A.J.K.	4,018	3,907	4,574	2.8	-12.2	76	71	29	7.0	162.1	6,393	6,029	5,757	6.0	11.0
GILGIT BALTIKISTAN (GB)	3,869	4,312	4,846	-10.5	-20.4	0	0	0	0.0	0.0	2,554	2,168	2,318	17.8	10.2
SUB-TOTAL	367,381	329,301	441,066	113	-16.7	31,549	27,265	28,087	95	12.3	1,472,035	1,263,241	1,297,493	131	13.5
RTIs	678	626	1,155	8.3	-41.3	0	0	0	0.0	0.0	1,761	2,439	2,791	-27.8	-36.9
NGOs															
NGO (FPAP)	92,983	87,889	78,061	5.8	19.1	1,184	892	979	32.7	20.9	164,163	142,483	131,734	15.2	24.6
MARIE STOPES SOCIETY	1,502	1,619	1,417	-7.2	6.0	0	0	0	0.0	0.0	15,883	23,654	20,400	-32.9	-22.1
SUB-TOTAL	94,485	89,508	79,478	5.6	18.9	1,184	892	979	32.7	20.9	180,046	166,137	152,134	8.4	18.3
OTHER															
SMC	265,439	240,979	237,858	10.2	11.6	1,592	889	5,069	79.1	-68.6	506,581	681,060	520,478	-25.6	-2.7
TOTAL	727,963	660,414	759,557	10.2	-4.2	34,325	29,046	34,135	18.2	0.6	2,160,423	2,112,877	1,972,896	2.3	9.5

Table-4

**OUTLET WISE PERFORMANCE IN TERMS OF CYP FOR THE QUARTER JANUARY - MARCH 2012
OVER THE PREVIOUS QUARTER AND CORRESPONDING QUARTER OF THE LAST YEAR**

OUTLETS	COUPLE YEARS OF PROTECTION (CYP)			%age Change	
	JAN-MAR. 2012	JAN-MAR. 2011	OCT-DEC. 2011	JAN-MAR-2012 JAN-MAR-2011	JAN-MAR-2012 OCT-DEC. 2011
FAMILY WELFARE CENTRES (FWCs)	817,435	707,240	701,399	15.6	16.5
REPRODUCTIVE HEALTH SERVICES-A CENTRES (RHS-A)	402,460	290,599	329,866	38.5	22.0
REPRODUCTIVE HEALTH SERVICES-B CENTRES (RHS-B)	61,941	123,393	69,498	-49.8	-10.9
MOBILE SERVICE UNITS (MSU)	70,318	62,370	64,104	12.7	9.7
HAKEEM & HOMOEOPATHS (H&H)	2,552	2,074	2,258	23.0	13.0
MALE MOBLIZER (MM)	42,943	39,724	39,646	8.1	8.3
PROVINCIAL LINE DEPARTMENTS (PLDs)	24,048	37,552	20,629	-36.0	16.6
REGISTER MEDICAL PRATICIONERS (RMPs)	33,535	19,731	20,244	70.0	65.7
FATA*	7,855	6,735	7,400	16.6	6.2
AJK*	6,393	5,757	6,029	11.0	6.0
GILGIT BALTISTAN (GB)*	2,554	2,318	2,168	10.2	17.8
REGIONAL TRANNING INSTITUTES (RTIs)	1,761	2,791	2,439	-36.9	-27.8
NON-GOVERNMENTAL ORGANIZATIONS (NGOs) **					
FAMILY PLANNING ASSOCIATION OF PAKISTAN (FPAP)	164,163	131,734	142,483	24.6	15.2
MARIE STOPES SOCIETY OF PAKISTAN	15,883	20,400	23,654	-22.1	-32.9
OTHER**					
SOCIAL MARKETTING OF CONTRACEPTIVES (SMC)	506,581	520,478	681,060	-2.7	-25.6
PAKISTAN	2,160,423	1,972,896	2,112,877	9.5	2.3
* Very few Outlets in the field, over all performance has been reported					
** NGOs and others rport over all performance					

Table 5

**OUTLET WISE PERFORMANCE OF CONTRACEPTIVE DELIVERY SERVICES
FOR THE QUARTER JANUARY - MARCH 2012 OVER OCTOBER - DECEMBER 2011**

OUTLETS	CONDOM (Units)			%age Change		ORAL PILL (Cycles)			%age Change		IUD (Insertions)			%age Change	
	JAN-MAR 2012	OCT-DEC 2011	JAN-MAR 2011	JAN-MAR-2012 OCT-DEC-2011	JAN-MAR-2012 JAN-MAR-2011	JAN-MAR 2012	OCT-DEC 2011	JAN-MAR 2011	JAN-MAR-2012 OCT-DEC-2011	JAN-MAR-2012 JAN-MAR-2011	JAN-MAR 2012	OCT-DEC 2011	JAN-MAR 2011	JAN-MAR-2012 OCT-DEC-2011	JAN-MAR-2012 JAN-MAR-2011
	2	3	4	5	6	7	8	9	10	11	12	13	14	15	16
FAMILY WELFARE CENTRES (FWC)															
PUNJAB	5,386,442	5,202,184	4,632,741	3.5	16.3	241,940	226,575	228,566	6.8	5.9	111,144	91,872	92,957	21.0	19.6
SINDH	2,692,651	2,522,975	2,436,118	6.7	10.5	122,014	116,737	115,993	4.5	5.2	27,500	23,154	23,065	18.8	19.2
KHYBER PAKHTUNKHWA	1,949,028	1,839,279	1,655,427	6.0	17.7	137,787	131,519	117,015	4.8	17.8	43,336	37,281	35,840	16.2	20.9
BALUCHISTAN	383,941	357,253	342,558	7.5	12.1	23,886	22,034	20,338	8.4	17.4	2,549	2,098	2,035	21.5	25.3
ISLAMABAD	129,695	125,943	110,319	3.0	17.6	6,970	6,895	6,749	1.1	3.3	2,102	1,866	1,453	12.6	44.7
PAKISTAN	10,541,757	10,047,634	9,177,163	4.9	14.9	532,597	503,760	488,661	5.7	9.0	186,631	156,271	155,350	19.4	20.1
REPRODUCTIVE HEALTH CENTRES-A (RHS-A)															
PUNJAB	248,300	222,073	197,927	12.0	25.6	17,118	14,462	14,232	18.4	20.3	9,152	6,820	7,655	34.2	19.6
SINDH	172,332	154,534	142,367	11.5	21.0	12,307	11,531	11,480	6.7	7.2	3,495	3,060	3,476	14.2	0.5
KHYBER PAKHTUNKHWA	109,983	105,094	97,179	4.7	13.2	7,915	7,700	7,318	2.8	8.2	2,900	2,656	2,611	9.2	11.1
BALUCHISTAN	20,727	24,492	21,688	-15.4	-4.4	1,593	1,722	1,601	-7.5	-0.5	569	481	488	18.3	21.6
ISLAMABAD	20,484	22,650	17,872	-9.6	14.6	687	1,107	1,015	-37.9	-32.3	198	280	270	-29.3	-26.7
PAKISTAN	572,156	528,843	477,053	8.2	19.9	39,820	36,522	35,646	8.5	11.1	16,314	13,297	14,480	22.7	12.7
REPRODUCTIVE HEALTH CENTRES-B (RHS-B)															
PUNJAB	-	-	-	0.0	0.0	-	-	-	0.0	0.0	-	-	-	0.0	0.0
SINDH	28,005	16,358	140	71.2	19,903.6	365	980	1,080	0.0	-66.2	50	210	28	0.0	0.0
KHYBER PAKHTUNKHWA	758	752	968	0.8	-21.7	257	218	134	17.9	91.8	117	139	116	-15.8	0.9
BALUCHISTAN	160	418	70	-61.7	128.6	73	120	28	-39.2	160.7	14	16	18	-12.5	-22.2
ISLAMABAD	3,300	2,000	2,800	65.0	17.9	195	105	150	85.7	30.0	150	75	60	100.0	150.0
PAKISTAN	32,223	19,528	3,978	65.0	710.0	890	1,423	1,392	-37.5	-36.1	331	440	222	-24.8	49.1
MOBILE SERVICE UNITS (MSU)															
PUNJAB	182,491	175,054	157,349	4.2	16.0	11,233	11,704	9,912	-4.0	13.3	8,749	8,789	7,913	-0.5	10.6
SINDH	249,691	233,353	236,158	7.0	5.7	12,032	11,645	12,461	3.3	-3.4	3,676	2,911	3,192	26.3	15.2
KHYBER PAKHTUNKHWA	86,733	82,161	73,289	5.6	18.3	6,232	5,725	5,572	8.9	11.8	3,249	2,813	2,581	24.3	26.9
BALUCHISTAN	74,674	63,600	60,588	17.4	23.2	5,413	3,644	3,677	48.5	47.2	1,081	897	884	20.5	22.3
ISLAMABAD	2,628	2,074	-	26.7	#DIV/0!	97	175	-	-44.6	#DIV/0!	79	39	-	102.6	#DIV/0!
PAKISTAN	596,217	556,242	527,384	7.2	13.1	35,007	32,893	31,622	6.4	10.7	16,834	15,249	14,550	10.4	15.7
PROVINCIAL LINE DEPARTMENTS (PLDs)															
PUNJAB	66,542	86,717	50,680	-23.3	31.3	12,965	16,010	20,241	-19.0	-35.9	5,064	4,339	8,449	16.7	-40.1
SINDH	650	260	6,068	150.0	-89.3	100	500	1,265	-80.0	-92.1	50	50	155	0.0	-67.7
KHYBER PAKHTUNKHWA	1,329	150	1,231	786.0	8.0	137	32	149	328.1	-8.1	47	30	123	56.7	-61.8
BALUCHISTAN	11,195	11,026	14,427	1.5	-22.4	1,046	918	1,655	13.9	-36.8	384	355	319	8.2	20.4
ISLAMABAD	4,040	6,500	5,200	-37.8	-22.3	367	345	300	6.4	22.3	310	194	180	59.8	72.2
PAKISTAN	83,756	104,653	77,606	-20.0	7.9	14,615	17,805	23,610	-17.9	-38.1	5,855	4,968	9,226	17.9	-36.5
REGISTER MEDICAL PRACTITIONERS (RMPs)															
PUNJAB	264,544	272,456	225,788	-2.9	17.2	11,101	10,157	8,475	9.3	31.0	3,883	2,130	1,812	82.3	114.3
SINDH	193,482	170,603	127,830	13.4	51.3	8,401	8,178	9,506	2.7	-11.6	125	166	291	-24.7	-57.0
KHYBER PAKHTUNKHWA	25,204	23,905	23,887	5.4	5.5	1,799	1,995	1,562	-9.8	15.2	155	48	70	222.9	121.4
BALUCHISTAN	73,485	63,494	55,868	15.7	31.5	2,848	2,567	2,282	10.9	24.8	-	-	-	0.0	0.0
ISLAMABAD	31,852	26,962	26,440	18.1	20.5	2,904	3,054	3,087	-4.9	-5.9	3,023	1,449	1,097	108.6	175.6
PAKISTAN	588,547	557,420	459,813	5.6	28.0	27,053	25,951	24,912	4.2	8.6	7,186	3,793	3,270	89.5	119.8
HAKEMS & HOMOEOPATHS (H&H)															
PUNJAB	209,689	165,064	155,451	27.0	34.9	6,036	5,771	4,773	4.6	26.5	-	-	-	0.0	0.0
SINDH	33,097	39,904	37,240	-17.1	-11.1	2,487	2,529	2,802	-1.7	-11.2	-	-	-	0.0	0.0
KHYBER PAKHTUNKHWA	26,337	23,405	16,030	12.5	64.3	1,300	1,326	984	-2.0	32.1	-	-	-	0.0	0.0
BALUCHISTAN	2,238	2,250	2,009	-0.5	11.4	183	219	144	-16.4	27.1	-	-	-	0.0	0.0
PAKISTAN	271,361	230,623	210,730	17.7	28.8	10,006	9,845	8,703	1.6	15.0	-	-	-	0.0	0.0
MALE MOBILIZER (MM)															
PUNJAB	2,818,463	2,551,847	2,423,117	10.4	16.3	83,289	77,436	78,166	7.6	6.6	-	-	-	0.0	0.0
SINDH	831,466	811,166	713,834	2.5	16.5	46,844	47,454	47,694	-1.7	-2.2	-	-	2	0.0	0.0
KHYBER PAKHTUNKHWA	807,286	737,244	680,026	9.5	18.7	42,727	36,344	39,697	17.6	7.6	-	-	-	0.0	0.0
BALUCHISTAN	-	188	154,693	-100.0	-100.0	-	63	12,566	-100.0	-100.0	-	-	-	0.0	0.0
ISLAMABAD	62,458	59,548	37,332	4.9	67.3	106	53	30	100.0	253.3	-	-	-	0.0	0.0
PAKISTAN	4,519,653	4,159,993	4,009,002	8.6	12.7	172,768	161,350	178,153	7.1	-3.0	-	-	2	0.0	0.0
FAMILY PLANNING ASSOCIATION OF PAKISTAN (FPAP)**															
PUNJAB	227,473	188,293	150,832	20.8	50.8	34,678	24,775	22,783	40.0	52.2	36,250	31,656	28,948	14.5	25.2
SINDH	11,814	20,564	22,113	-42.6	-46.6	2,870	3,196	2,028	-10.2	41.5	4,374	6,564	5,685	-33.4	-22.8
KHYBER PAKHTUNKHWA	17,309,388	34,220,546	28,674,374	-49.4	-39.6	710,256	682,633	689,430	4.0	3.0	76,011	96,743	46,987	-21.4	61.8
BALUCHISTAN	60,744	67,429	63,255	-9.9	-99.8	4,412	3,307	3,861	33.4	-99.4	1,121	1,049	1,081	6.9	-97.6
ISLAMABAD	7,536	10,915	8,673	-31.0	-88.1	3,535	2,588	2,365	36.6	-8.4	427	302	323	41.4	-60.5
PAKISTAN	9,235	10,454	8,313	-11.7	6.5	587	648	632	-9.4	-75.2	435	628	703	-30.7	34.7
FATA*															
PUNJAB	101,307	86,815	60,440	16.7	1,118.7	9,872	8,251	6,942	19.6	1,482.0	1,542	1,576	1,433	-2.2	119.3
TOTAL ALL OUTLETS	34,933,167	50,809,952	43,930,729	-31.2	-20.5	1,598,764	1,514,947	1,520,740	5.5	5.1	353,311	332,536	282,240	6.2	25.2

* Very few Outlets in the field, over all performance has been reported

** Report over all performance

OUTLETS	INJECTABLE (Vials)					%age Change		CON. SURGERY (Cases)			%age Change		COUPLE YEARS OF PROTECTION (CYP)			%age Change	
	JAN-MAR 2012	OCT-DEC 2011	JAN-MAR 2011	JAN-MAR-2012 OCT-DEC-2011	JAN-MAR-2012 JAN-MAR-2011	JAN-MAR 2012	OCT-DEC 2011	JAN-MAR 2011	JAN-MR-2012 OCT-DEC-2011	JAN-MAR-2012 JAN-MAR-2011	JAN-MAR 2012	OCT-DEC 2011	JAN-MAR 2011	JAN-MR-2012 OCT-DEC-2011	JAN-MAR-2012 JAN-MAR-2011		
	18	19	20	21	22	23	24	25	26	27	28	29	30	31	32		
FAMILY WELFARE CENTRES (FWC)																	
PUNJAB	107,311	97,653	123,727	9.9	-13.3	-	-	-	0.0	0.0	464,001	392,314	397,504	18.3	16.7		
SINDH	76,635	71,202	106,590	7.6	-28.1	-	-	-	0.0	0.0	138,410	120,583	126,696	14.8	9.2		
KHYBER PAKHTUNKHWA	84,429	77,915	96,154	8.4	-12.2	-	-	-	0.0	0.0	191,283	167,607	163,968	14.1	16.7		
BALUCHISTAN	5,617	5,326	5,831	5.5	-3.7	-	-	-	0.0	0.0	14,304	12,358	12,023	15.7	19.0		
ISLAMABAD	3,576	3,362	3,735	6.4	-4.3	-	-	-	0.0	0.0	9,438	8,538	7,049	10.5	33.9		
PAKISTAN	277,568	255,458	336,037	8.7	-17.4	-	-	-	0.0	0.0	817,435	701,399	707,240	16.5	15.6		
REPRODUCTIVE HEALTH CENTRES-A (RHS-A)																	
PUNJAB	9,131	8,170	9,413	11.8	-3.0	19,230	15,221	10,763	26.3	78.7	277,101	218,273	165,536	27.0	67.4		
SINDH	9,157	7,811	10,180	17.2	-10.0	5,886	5,199	5,563	13.2	5.8	89,656	79,102	85,494	13.3	4.9		
KHYBER PAKHTUNKHWA	6,682	5,967	7,607	12.0	-12.2	856	794	1,333	7.8	-35.8	23,478	21,658	28,485	8.4	-17.6		
BALUCHISTAN	1,307	1,311	1,365	-0.3	-4.2	363	371	371	20.6	-2.2	7,041	5,993	6,806	17.5	3.4		
ISLAMABAD	391	464	461	-15.7	-15.2	338	283	244	19.4	38.5	5,184	4,841	4,279	7.1	21.2		
PAKISTAN	26,668	23,723	29,026	12.4	-8.1	26,673	21,798	18,274	22.4	46.0	402,460	329,866	290,599	22.0	38.5		
REPRODUCTIVE HEALTH CENTRES-B (RHS-B)																	
PUNJAB	-	-	-	0.0	0.0	3,164	4,190	6,342	-24.0	-49.8	39,800	52,375	79,275	-24.0	-49.8		
SINDH	1,938	1,053	465	84.0	316.8	1,041	746	2,982	39.5	-65.1	13,794	10,450	37,539	32.0	-63.3		
KHYBER PAKHTUNKHWA	208	207	225	0.5	-7.6	451	366	246	23.2	83.3	6,111	5,123	3,542	19.3	72.5		
BALUCHISTAN	116	85	157	36.5	-26.1	22	34	103	-35.3	-78.6	353	509	1,384	-30.6	-74.5		
ISLAMABAD	235	45	130	422.2	80.8	102	60	111	70.0	-8.1	1,883	1,042	1,653	80.6	13.9		
PAKISTAN	2,497	1,390	977	79.6	155.6	4,800	5,396	9,784	-11.0	-50.9	61,941	69,498	123,393	-10.9	-48.8		
MOBILE SERVICE UNITS (MSU)																	
PUNJAB	7,884	8,207	9,400	-3.9	-16.1	-	-	-	0.0	0.0	34,214	34,399	31,329	-0.5	9.2		
SINDH	8,199	7,739	10,696	5.9	-23.3	-	-	-	0.0	0.0	17,042	14,133	15,782	20.6	8.0		
KHYBER PAKHTUNKHWA	5,662	5,233	5,792	12.0	1.2	-	-	-	0.0	0.0	13,562	11,144	11,002	21.7	23.3		
BALUCHISTAN	2,646	2,170	2,483	21.9	6.6	-	-	-	0.0	0.0	5,192	4,258	4,256	21.9	22.0		
ISLAMABAD	34	37	-	#DIV/0!	#DIV/0!	-	-	-	0.0	0.0	308	170	-	81.2	#DIV/0!		
PAKISTAN	24,625	23,386	28,371	5.3	-13.2	-	-	-	0.0	0.0	70,318	64,104	62,370	9.7	12.7		
PROVINCIAL LINE DEPARTMENTS (PLDs)																	
PUNJAB	7,697	5,254	13,687	46.5	-43.8	-	-	-	0.0	0.0	20,590	17,907	34,010	15.0	-38.5		
SINDH	412	104	338	296.2	21.9	-	-	-	0.0	0.0	269	231	737	16.3	-63.5		
KHYBER PAKHTUNKHWA	15	15	157	0.0	-90.4	-	-	-	0.0	0.0	186	111	480	67.2	-61.3		
BALUCHISTAN	829	750	694	10.5	19.5	-	-	-	0.0	0.0	1,657	1,630	1,466	8.3	13.1		
ISLAMABAD	1,047	512	864	104.5	21.2	-	-	-	0.0	0.0	1,347	850	859	58.5	56.8		
PAKISTAN	10,000	6,635	15,740	50.7	-36.5	-	-	-	0.0	0.0	24,048	20,629	37,552	16.6	-36.0		
REGISTER MEDICAL PRACTITIONERS (RMPs)																	
PUNJAB	6,045	1,880	7,520	221.5	-19.6	-	-	-	0.0	0.0	17,377	10,400	9,979	67.1	74.1		
SINDH	832	393	1,530	111.7	-45.6	-	-	-	0.0	0.0	2,507	2,390	2,846	4.9	-11.9		
KHYBER PAKHTUNKHWA	1,337	1,406	3,990	-4.9	-66.5	-	-	-	0.0	0.0	1,105	748	1,313	47.7	-15.9		
BALUCHISTAN	165	172	135	-4.1	22.2	-	-	-	0.0	0.0	733	646	567	13.4	29.3		
ISLAMABAD	4,089	2,986	3,986	36.9	2.6	-	-	-	0.0	0.0	11,813	6,060	5,026	95.0	135.0		
PAKISTAN	12,468	6,837	17,161	82.4	-27.3	-	-	-	0.0	0.0	33,535	20,244	19,731	65.7	70.0		
HAKHEEMS & HOMOEOPATHS (H&H)																	
PUNJAB	-	-	-	0.0	0.0	-	-	-	0.0	0.0	1,859	1,531	1,398	21.4	33.0		
SINDH	-	-	150	0.0	0.0	-	-	-	0.0	0.0	396	446	475	-11.2	-16.8		
KHYBER PAKHTUNKHWA	-	-	-	0.0	0.0	-	-	-	0.0	0.0	270	251	177	7.4	52.4		
BALUCHISTAN	-	-	-	0.0	0.0	-	-	-	0.0	0.0	28	30	24	-8.2	17.8		
PAKISTAN	-	-	150	0.0	0.0	-	-	-	0.0	0.0	2,552	2,258	2,074	13.0	23.0		
MALE MOBILIZER (MM)																	
PUNJAB	-	-	-	0.0	0.0	-	-	-	0.0	0.0	25,125	22,884	22,038	9.8	14.0		
SINDH	-	-	-	0.0	0.0	-	-	-	0.0	0.0	8,884	8,797	8,144	1.0	9.1		
KHYBER PAKHTUNKHWA	-	-	-	0.0	0.0	-	-	-	0.0	0.0	8,454	7,543	7,369	12.1	14.7		
BALUCHISTAN	-	-	-	0.0	0.0	-	-	-	0.0	0.0	-	6	1,912	-100.0	-100.0		
ISLAMABAD	195	-	-	0.0	0.0	-	-	-	0.0	0.0	480	417	261	15.0	83.7		
PAKISTAN	195	-	-	0.0	0.0	-	-	-	0.0	0.0	42,943	39,846	39,724	8.3	8.1		
FAMILY PLANNING ASSOCIATION OF PAKISTAN (FPAP)**																	
	92,983	87,889	78,061	5.8	19.1	1,184	892	979	32.7	20.9	164,163	142,483	131,734	15.2	24.6		
MARIE STOPES SOCIETY **																	
	1,502	1,619	1,417	-7.2	6.0	-	-	-	0.0	0.0	15,883	23,654	20,400	-32.9	-22.1		
SOCIAL MARKETING OF CONTRACEPTIVES**																	
	265,439	240,979	237,858	10.2	11.6	1,592	889	5,069	79.1	-68.6	506,581	681,060	520,478	-25.6	-2.7		
A.J.K.*																	
	4,018	3,907	4,574	2.8	-98.3	76	71	29	7.0	-98.5	6,393	6,029	5,757	6.0	-98.8		
GILGIT BALISTAN (GB)*																	
	3,859	4,312	4,846	-10.5	-15.6	-	-	-	0.0	0.0	2,554	2,168	2,318	17.8	-55.6		
REGIONAL TRAINING INSTITUTES (RTIs)																	
	678	626	1,155	8.3	-86.0	-	-	-	0.0	0.0	1,761	2,438	2,791	-27.8	-24.0		
FATA*																	
	5,483	3,653	4,184	50.1	374.7	-	-	-	0.0	0.0	7,855	7,400	6,735	6.2	181.4		
TOTAL ALL OUTLETS	727,983	660,414	759,557	10.2	-4.2	34,325	29,046	34,135	18.2	0.6	2,160,423	2,112,877	1,972,896	2.3	9.5		

* Very few Outlets in the field, over all performance has been reported

** Report over all performance

Table-6

**OUTLET WISE AVERAGE PERFORMANCE OF CONTRACEPTIVES
FOR THE QUARTER JANUARY - MARCH 2012**

OUTLET	NO. OF OUTLETS	CONDOM (Units)		ORAL PILL (Cycles)		IUD (Insertions)		INJECTABLE (Vials)		CON SURGERY (Cases)		CYP	
		JAN-MAR. 2012	Per Outlet	JAN-MAR. 2012	Per Outlet	JAN-MAR. 2012	Per Outlet	JAN-MAR. 2012	Per Outlet	JAN-MAR. 2012	Per Outlet	JAN-MAR. 2012	Per Outlet
FWCs													
PUNJAB	1500	5,386,442	3,591	241,940	161	111,144	74	107,311	72	-	-	464,001	309
SINDH	628	2,692,651	4,288	122,014	194	27,500	44	76,635	122	-	-	138,410	220
KHYBER PAKHTUNKHWA	422	1,949,028	4,619	137,787	327	43,336	103	84,429	200	-	-	191,283	453
BALUCHISTAN	155	383,941	2,477	23,886	154	2,549	16	5,617	36	-	-	14,304	92
ISLAMABAD	29	129,695	4,472	6,970	240	2,102	72	3,576	123	-	-	9,438	325
PAKISTAN	2734	10,541,757	3,856	532,597	195	186,631	68	277,568	102	-	-	817,435	299
RHS-A CENTRES													
PUNJAB	75	248,630	3,315	17,118	228	9,152	122	9,131	122	19,230	256	277,101	3,695
SINDH	79	172,332	2,181	12,307	156	3,495	44	9,157	116	5,886	75	89,656	1,135
KHYBER PAKHTUNKHWA	26	109,983	4,230	7,915	304	2,900	112	6,682	257	856	33	23,478	903
BALUCHISTAN	6	20,727	3,455	1,593	266	569	95	1,307	218	363	61	7,041	1,173
ISLAMABAD	3	20,484	6,828	687	229	198	66	391	130	338	113	5,184	1,728
PAKISTAN	189	572,156	3,027	39,620	210	16,314	86	26,668	141	26,673	141	402,460	2,129
MSUs													
PUNJAB	117	182,491	1,560	11,233	96	8,749	75	7,884	67	-	-	34,214	292
SINDH	72	249,691	3,468	12,032	167	3,676	51	8,199	114	-	-	17,042	237
KHYBER PAKHTUNKHWA	30	86,733	2,891	6,232	208	3,249	108	5,862	195	-	-	13,562	452
BALUCHISTAN	38	74,674	1,965	5,413	142	1,081	28	2,646	70	-	-	5,192	137
ISLAMABAD	1	2,628	2,628	97	97	79	79	34	34	-	-	308	308
PAKISTAN	258	596,217	2,311	35,007	136	16,834	65	24,625	95	-	-	70,318	273

Table-7

**PERCENTAGE DISTRIBUTION OF TOTAL CYP BY SOURCE
FOR JANUARY - MARCH 2012**

SOURCE	CYP	% AGE
POPULATION WELFARE DEPARTMENTS		
PUNJAB	880,067	40.74
SINDH	270,958	12.54
KHYBER PAKHTUNKHWA	244,448	11.31
BALUCHISTAN	29,308	1.36
ISLAMABAD	30,453	1.41
FATA	7,855	0.36
AJK	6,393	0.30
G.B.	2,554	0.12
SUB-TOTAL	1,472,035	68.14
RTIs	1,761	0.08
NGOs		
FPAP	164,163	7.60
MARIE STOPES	15,883	0.74
SUB-TOTAL	180,046	8.33
OTHER		
SMC	506,581	23.45
TOTAL	2,160,423	100.00

Table-8 PERCENTAGE DISTRIBUTION OF TOTAL CYP BY SERVICE OUTLET FOR JANUARY - MARCH 2012

OUTLETS	CYP	% AGE
FWC	817,435	37.84
RHS-A	402,460	18.63
RHS-B	61,941	2.87
MSU	70,318	3.25
PLDs	24,048	1.11
RMPs	33,535	1.55
H&H	2,552	0.12
MM	42,943	1.99
FATA*	7,855	0.36
AJK*	6,393	0.30
G.B.*	2,554	0.12
RTIs	1,761	0.08
FPAP**	164,163	7.60
MARIE STOPES **	15,883	0.74
SMC**	506,581	23.45
TOTAL	2,160,423	100.00
* Very few Outlets in the field, over all performance included		
**Report over all performance		

Table-9 PERCENTAGE DISTRIBUTION OF TOTAL CYP BY METHOD FOR JANUARY - MARCH 2012

METHODS	CYP	%AGE
CONDOM (Units)	242,591	11.23
ORAL PILL (Cycles)	106,584	4.93
IUD (Insertions)	1,236,589	57.24
INJECTABLE (Vials)	145,597	6.74
CON. SURGERY (Cases)	429,063	19.86
TOTAL	2,160,423	100.00

Table-10 PROVINCE WISE FAMILY PLANNING AND MCH SERVICES DELIVERY FOR THE PERIOD JANUARY - MARCH 2012

PROVINCE/ FEDERAL TERRITORY	FP CLIENTS	MOTHER CARE (Number of Clients)			GENERAL AILMENTS (Number of patients)			MCH CLIENTS	ALL CLIENTS
		Pre-Natal	Post-Natal	Total	Children	Adults	Total	(Col 5+8)	(Col.2+5+8)
		3	4	5	6	7	8	9	10
PUNJAB	478,665	40,036	24,365	64,401	51,957	233,759	285,716	350,117	828,782
SINDH	336,297	45,576	45,168	90,744	205,348	0	205,348	296,092	632,389
KHYBER PAKHTUNKHWA	192,349	16,077	10,862	26,939	38,135	143,533	181,668	208,607	400,956
BALUCHISTAN	28,835	5,048	3,348	8,396	6,348	39,270	45,618	54,014	82,849
ISLAMABAD	12,028	1,196	772	1,968	4,816	17,004	21,820	23,788	35,816
AJK	7,834	1,709	899	2,608	3,321	4,421	7,742	10,350	18,184
G.B.	7,731	1,136	2,590	3,726	4,635	16,121	20,756	24,482	32,213
FATA	28,254	5,843	4,423	10,266	5,052	31,782	36,834	47,100	75,354
TOTAL	1,091,993	116,621	92,427	209,048	319,612	485,890	805,502	1,014,550	2,106,543