



CONTRACEPTIVE PERFORMANCE REPORT

APRIL – JUNE, 2013

***GOVERNMENT OF PAKISTAN
STATISTICS DIVISION
PAKISTAN BUREAU OF STATISTICS***

PREFACE

Pakistan Bureau of Statistics (PBS) is the prime official agency of Pakistan, responsible for collection, compilation and dissemination of reliable and timely statistical information to the policy makers, planners and researchers. It publishes a variety of reports, based on primary and secondary data, especially on economics and social aspects of the country.

Quarterly Contraceptive Performance Report (April - June, 2013) encompasses the contraceptive performance at all service delivery points, under Population Welfare Programme in the country. The Pakistan Bureau of Statistics (PBS) aims at ensuring nationwide coverage of Family Planning/Reproductive Health activities. The quarterly contraceptive performance report is an important intervention to gauge outlet-wise, source-wise and method-wise contraceptive progress and observe the direction of track/trend regarding the future Contraceptive Requirement and Distribution (CRD) in the country.

Above all, I am grateful to Provincial Population Welfare Departments (PPWDs); District Population Welfare Office, Islamabad; Population Welfare Department Azad Jammu & Kashmir (AJK); Population Welfare Department Gilgit-Baltistan (GB), Social Marketing of Contraceptive (SMC) and other stakeholders for their support in the compilation of this document.

I hope that the user of the report would find it useful for their pursuits. Comments and suggestions for the improvement of Contraceptive Performance Report would however be highly appreciated.

Asif Bajwa
Chief Statistician
Pakistan Bureau of Statistics
Government of Pakistan

CONTENTS

	Page No.
PREFACE -----	i
CONTENTS -----	iii
SUMMARY -----	v
INTRODUCTION -----	1
Methodology-----	1
Data Sources -----	1
Concept and Definitions -----	2
 RESULTS AND DISCUSSION -----	 4
1. Contraceptive Usage by Data Source-----	4
2. Contraceptive Usage by Method-----	4
3. Comparative Analysis of Contraceptive Usage by Source & Method-----	5
4. Outlet-wise Usage of Contraceptives-----	6
5. Comparative Analysis of Contraceptive Usage by Outlets & Method-----	6-8
i. Family Welfare Centers (FWCs)-----	6
ii. Reproductive Health Services Centers (RHS-A)-----	7
iii. Reproductive Health Services Centers (RHS-B)-----	7
iv. Mobile Service Units (MSUs)-----	7
v. Provincial Line Departments (PLDs) including outlets of Health Department-----	7
vi. Registered Medical Practitioners (RMPs)-----	7
vii. Hakeems and Homoeopaths (H&H)-----	8
viii. Male Mobilizer-----	8
ix. Non-Governmental Organization (NGO)-FPAP-----	8
x. Azad Jammu & Kashmir (AJK)-----	8
xi. Gilgit – Baltistan (GB)-----	8
xii. Federally Administered Tribal Areas(FATA)-----	8
6. Method and Outlet- wise Average performance-----	8-10
i. Average performance per FWC by method-----	8
ii. Average performance per RHS-A by method-----	10
iii. Average performance per MSU by method-----	10
7. Percentage Distribution of Total CYP by Source -----	12
8. Percentage Distribution of Total CYP by Service Outlet -----	12
9. Percentage Distribution of Total CYP by Method -----	12
10. Family Planning and Mother & Child Health (MCH) Services-----	12
 STATISTICAL TABLES -----	 13-22

SUMMARY

The profile of contraceptive performance in the quarter (April. – June., 2013) compared with the same period of 2012 as well as with the previous quarter (January. – March. 2013), is summarized as under:-

- The overall contraceptive performance for the quarter April. – June, 2013 in comparison with the corresponding quarter of the last year (April. – June, 2012) has increased by 10.32% and with the previous quarter (January March, 2013) increased by 9.97%, in terms of Couple Years of Protection (CYP).
- In the Source-wise comparison of contraceptive performance for the quarter (April. – June , 2013) with the corresponding quarter of 2012, an increase has been observed in the performance of Khyber Pakhtunkhwa (4.6%) whereas decrease has been witnessed in Punjab (5.7%) , Sindh (23.5%) and Balochistan (18.7%). Despite decrease in the performance of three provinces, the overall increase at national level by 10.32% is due to the increase in the performance of private sector {Family Planning Association of Pakistan (FPAP) by 23.8%, Marie Stopes Society (MSS) by 9.6% & Social Marketing of Contraceptives (SMC) by 71.8%}. In comparison with the previous quarter, an increase has been noticed in Punjab (4.2%), Sindh (2.3%), Khyber Pakhtunkhwa (37.6%) whereas decrease has been depicted in Balochistan (2.3%).
- Method-wise profile has shown an increase in Condoms (98.4%), Oral Pills (0.1%), IUDs (3.1%), Injectables (0.7%) while decrease has been noticed in Contraceptive Surgery cases (1.9%) in current quarter (April-June, 2013) as compared to the corresponding quarter of the last year. In comparison with the previous quarter (January- March, 2013), an increase has been observed in Condoms (6.6%), Oral Pills (11.8%), IUDs (16.6%), Injectables (13.4%) whereas decrease has been witnessed in Contraceptive Surgery cases (7.0 %).
- The outlet-wise usage of contraceptives during April. – June 2013, when compared with corresponding quarter of the last year, has shown an increase in Reproductive Health Services-A Centers (RHS-A) by 0.9%, Hakeem & Homoeopaths (H&H) by 14.2%, Registered Medical Practitioners(RMPs) by 0.8%, FPAP by 23.8%, Marie Stopes by 9.6%, SMC by 71.8%, AJK by 62.8% and Gilgit-Baltistan by 15.5%, whereas a drop of performance has been observed in Family Welfare Centers (FWCs) by 5.5%, RHS-B Centres by 10.7%, Mobile Service Units (MSUs) by 58.7%, Male Mobilizers(MM) by 0.4%, Provincial Line Departments (PLDs) by 41.6%, Regional Training Institutes (RTIs) by 33.1%, and FATA by 14.6% . The outlet-wise service delivery performance when compared with the previous quarter (January- March, 2013), it depicted an increase in FWCs (20.7%), MSUs (17.2%), Hakeem & Homoeopaths (H&H)(17.1%), Male Mobilizer (10.1%), RTIs (87.4%), FPAP (5.8%), Marie Stopes (0.8%), SMC (11.4%), AJK (62.6%) , Gilgit-Baltistan (1.0%) and FATA (43.1%). Whereas decrease has been observed in performance i.e. RHS -A Centers (3.9%), RHS-B Centers (6.3%), PLDs (27.7%) and RMPs (5.6%).
- The share of Social Marketing of Contraceptive (SMC) in the total CYP is 29.68% while that of Family Welfare Centers (FWCs) is 35.52% and the remaining 34.8% contribution is attributed to all other outlets/sources in the country.

INTRODUCTION

Pakistan having the highest population growth is the sixth most populous country in the world. Moreover, Pakistan is making the third highest annual net addition to the global population after India and China. The country's high fertility rate is a major contributor to this situation since mortality rate has been fairly stable over the years.

The rapid population growth is the main obstacle to a country's social progress, economic stability, health, environment, law & order and food security. Therefore, an immediate action is required to curb the increasing trend of population. The provision of quality contraceptives and its easy access will help to reduce the Total Fertility Rate and consequently to control the population. This report highlights the performance of contraceptives that are provided in the market from the government as well as from private outlets, during April to June 2013.

The main objectives of the report are to:

1. Assess the source-wise, method-wise and outlet-wise contraceptives performance.
2. Provide basis for estimating annual requirement for contraceptives in the country.

Methodology

As per past practice in the Ministry of Population Welfare, Pakistan Bureau of Statistics collect contraceptive performance data on monthly basis by post, fax and through e-mail from different data sources. After editing and coding, the data is got entered on monthly basis and processed at the end of quarter according to tabulation plan at Data Processing Centre of PBS. Thereafter, quarterly contraceptive performance report is compiled. This report on Contraceptive Performance is for the 4th quarter (April-June, 2013) of the financial year 2012-13. In this quarterly report, the percentage change in usage of contraceptive for the quarter under report (April - June, 2013) is compared with the corresponding quarter of last year as well as with the previous quarter of the current year.

Data Sources

The Contraceptive Performance Report is prepared on the basis of data received from the following sources:

- Provincial Population Welfare Departments (PPWDs);
- Population Welfare Departments AJK, GB and FATA;
- The District Population Welfare Office, Islamabad
- Family Planning Association of Pakistan (FPAP) ;
- Marie Stopes Society of Pakistan (NGO);
- Social Marketing of Contraceptive (SMC) and
- Regional Training Institutes (RTIs)

Concepts and Definitions

In this report, the following concepts and definitions have been used:

Family Welfare Centre (FWC): is the cornerstone of Pakistan's Population Welfare Programme. These centers constitute the most extensive institutional network in the country for promoting and delivering family planning services in both urban and rural areas. As a static facility, it serves a population of about 7000; while operating through its satellites clinics and outreach facility, a single FWC covers a population of about 12000.

Reproductive Health Services (RHS) Centers: are the major clinical components of the Pakistan's Population Welfare Programme. They provide services through RHS-A Centers and RHS-B Centers. The RHS-A centers are hospital-based service delivery units in the government sector. They provide contraceptive surgery facilities for women and men with safe and effective backup medical support. The RHS-B Centers are well-established hospitals and clinics in the private sector. These have fully-equipped operating facilities (operation theatre facilities, beds for admission, post-operative care, sterilization and emergency resuscitation equipment etc.) and trained work force.

Mobile Service Units (MSUs): are the flagship of the Population Welfare Programme. They provide a package of quality Family Planning/Reproductive Health (FP/RH) services to the people of those remote villages and hamlets where no other health facility exists. The MSUs operate through specially-designed vehicles which carry with-in them all the facilities of a mini clinic ensuring complete privacy for a simple gynecological procedure.

Regional Training Institutes (RTIs): provide skill-based training in FP/RH for all categories of health care providers i.e. Doctors, medical students, nurses, student nurses, lady health visitors and other paramedics. The RTIs also undertake activities focused on raising the awareness about the level of hakims, homeopaths, community health workers, teachers and college students.

Provincial Line Departments (PLDs): The health outlets of PLDs have been involved in the Population Welfare Programme for provision of services in order to improve access and expand coverage of facilities for promotion of family planning.

Couple Years of Protection (CYP): The term “Couple Years of Protection (CYP)” is one of several commonly used indicators to assess international family planning efforts. It is the protection provided by contraceptive methods during one-year period, based upon the volume of all contraceptives sold or distributed to clients during that period. It is also an indirect estimator of birth control.

CONVERSION FORMULA FOR CONTRACEPTIVE USAGE INTO (CYP)		
CONDOM	NO. OF UNITS / 144	= 1 CYP
ORAL PILL	NO. OF CYCLES / 15	= 1 CYP
IUD	NO. OF INSERTIONS x 3.5	= 1 CYP
INJECTABLE	NO. OF VIALS / 5	= 1 CYP
CONTRACEPTIVE SURGERY (CS)	NO. OF CASES x 12.5	= 1 CYP

RESULTS AND DISCUSSION

1. Contraceptive Usage by Data Source

The source-wise comparison of contraceptive usage during current quarter (April-June, 2013) in terms of Couple Year of Protection (CYP) has been made with corresponding quarter of the previous year, and also with the previous quarter (January- March, 2013) by calculating percentage change for the respective period. **Table-1** annexed in the report is referred, for detailed review.

At National level, an increase of 10.32% has been recorded for all program and non-program service outlets during the current quarter (April-June, 2013) as compared to corresponding quarter of 2012. However when performance was compared with the previous quarter (January- March, 2013), it reflected an increase of 9.97 %.

On reviewing the scenario at Provincial level, increase has been observed in the performance of Khyber Pakhtunkhwa (4.6%) and all other provinces i.e. Punjab (5.7%), Sindh (23.5%), and Balochistan (18.7%) depicted decrease, when it was compared to the corresponding quarter of 2012. On comparison with the previous quarter, an increase has been noticed in Punjab (4.2%), Sindh (2.3%) and Khyber Pakhtunkhwa (37.6%) whereas decrease has been observed in Balochistan (2.3%).

For Islamabad, a decrease of 15.6% over the corresponding quarter of the last year and increase of 17.0% over the previous quarter has been recorded for April-June, 2013. A decrease of 14.6% has been observed for FATA in the current quarter as compared to corresponding quarter of the last year whereas an increase of 43.1% over previous quarter (January- March, 2013) has been noticed.

An increase of 62.8% was depicted in current quarter with respect to corresponding quarter of 2012 for AJK and 15.5% for Gilgit-Baltistan. Moreover, an increase of 62.6% for AJK and 1.0% in Gilgit-Baltistan was witnessed in current quarter over previous quarter. For NGO sector, an increase has been recorded in the performance of Family Planning Association of Pakistan-FPAP (23.8%) and in Marie Stopes Society of Pakistan (9.6%) over the corresponding quarter of the last year. While comparing over previous quarter (January- March, 2013), increase has shown in FPAP (5.8%) and Marie Stopes Society of Pakistan (0.8%). A significant increase of 71.8% has been observed in the performance of Social Marketing of Contraceptive (SMC) during current quarter over the corresponding quarter of the last year, whereas an increase of 11.4% over previous quarter has been noticed. The details are shown in **Table-1**.

2. Contraceptive Usage by Method

In absolute terms, the Contraceptive Performance of Program and Non-Program service outlets reported a sale of 50.047 million units of Condoms, 1.694 million cycles of Oral Pills, 0.343 million insertions of Internal Urine Devices (IUDs) and 0.802 million vials of Injectables. Also 28,203 cases of Contraceptive Surgery were performed during the current quarter.

The Method-wise comparison, in terms of CYP, with the corresponding quarter of 2012 showed an increase in usage of Condoms (98.4%) , Oral pills (0.1%), IUDs (3.1%) and Injectables (0.7%) whereas decrease in Contraceptive Surgery cases (1.9%) has been observed. When performance was compared with the previous quarter (January- March, 2013), increase has been witnessed in Condoms (6.6%) , Oral Pill (11.8%), IUDs (16.6%) and Injectables (13.4%), whereas decrease has been depicted in Contraceptives Surgeries (7.0%). The details are shown in **Table-2**.

3. Comparative Analysis of Contraceptive Usage by Source & Method

For Condoms, an increase has been observed in Punjab (1.0%), Sindh (18.2%), Khyber Pakhtunkhwa (28.1%), Balochistan (24.1%), Family Planning Association of Pakistan - FPAP (11.0%), SMC (4.3%) , AJK (6.4%) , Gilgit-Baltistan (11.6%), RTIs (452.8%) and FATA (6.9%), whereas decrease has been recorded in Islamabad (0.1%) and Marie Stopes Society (12.5%), on comparing the performance of current quarter with the previous quarter (January- March, 2013).

For Oral Pills, an increase has been witnessed in Punjab (8.8%), Sindh (14.4%), Khyber Pakhtunkhwa (17.7%), FPAP (29.6%), SMC (10.9%) ,Gilgit-Baltistan (0.9 %), RTIs (122.4%) and FATA (74.3%) whereas a decrease has been recorded in Balochistan (18.4%), Islamabad (5.5%) , Marie Stopes Society (17.9%) and AJK (26.2%), when performance of current quarter was compared with the previous quarter.

For IUDs, the performance of current quarter when compared with the previous quarter, an increase has been observed in Punjab (12.1%), Sindh (2.6%), Khyber Pakhtunkhwa (49.1%), Islamabad (26.0%), FPAP (12.2%), SMC (13.8%), Marie Stopes Society (1.4%), AJK (95.1%) Gilgit-Baltistan (1.1 %), RTIs (105.3%) and FATA (54.9%) whereas a decrease in Balochistan (1.2%) has been recorded.

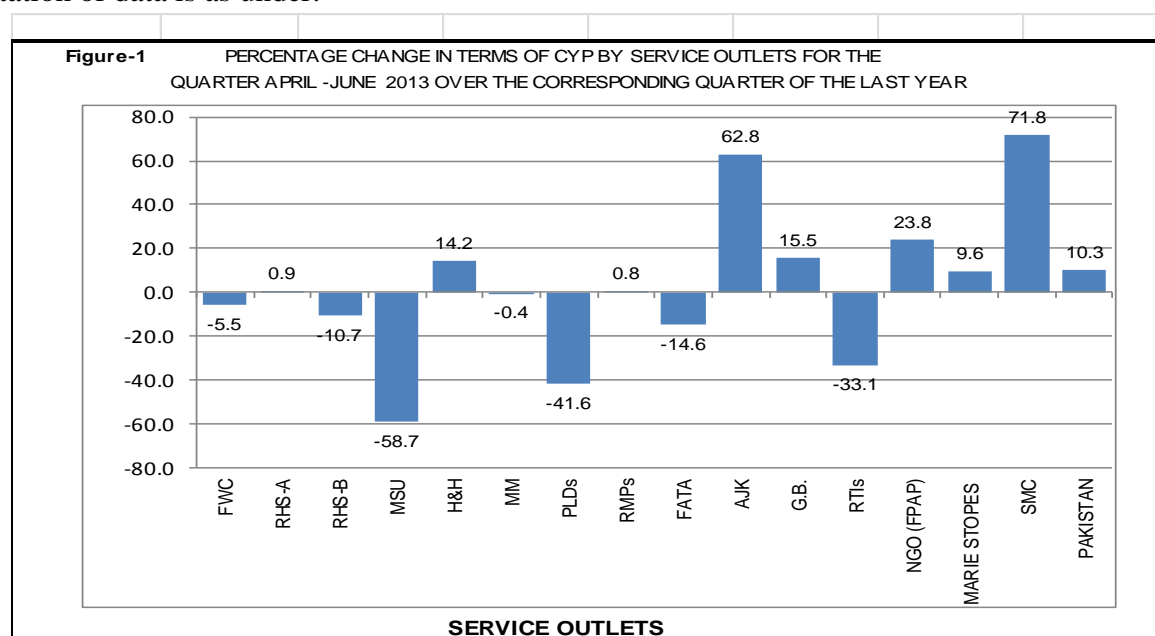
In case of Injectables, increase has been observed in Punjab (0.1%), Sindh (5.8%), Khyber Pakhtunkhwa (16.5%), Islamabad (48.5%), SMC (32.8%), RTIs (51.1%) and FATA (18.8%) whereas a decrease in Balochistan (0.7%), FPAP (9.5%) , Marie Stopes Society (19.5%), AJK (5.8%) and Gilgit-Baltistan (0.3 %) has been recorded on comparing the performance of current quarter with the previous quarter.

When we look into the figures of Contraceptives Surgery cases, an increase in Khyber Pakhtunkhwa (4.3%) and AJK (37.6%) has been witnessed whereas a decrease has been observed in Punjab (7.0%), Sindh (9.0%), , Balochistan (20.2%), Islamabad (3.3%) and FPAP (21.2%), SMC (0.5%) on comparing the performance of current quarter with the previous quarter. The details are reflected in **Table-3**.

4. Outlet-wise Usage of Contraceptives

The contribution of service outlets towards CYP during April- June, 2013 when compared with corresponding quarter of the last year, an increase has been depicted in Reproductive Health Services-A Centers (RHS-A) by 0.9%, Hakeem & Homoeopaths (H&H) by 14.2%, Registered Medical Practitioners(RMPs) by 0.8%, Family Planning Association of Pakistan (FPAP) by 23.8%, Marie Stopes Society of Pakistan by 9.6%, Social Marketing of Contraceptives(SMC) by 71.8%, AJK by 62.8% and Gilgit-Baltistan by 15.5%, whereas a drop of performance has been observed in Family Welfare Centers (FWCs) by 5.5%, Reproductive Health Services-B Centers (RHS-B) by 10.7%, Mobile Service Units (MSUs) by 58.7%, Male Mobilizers(MM) by 0.4%, Provincial Line Departments (PLDs) by 41.6%, Regional Training Institutes (RTIs) by 33.1%, and FATA by 14.6%

The outlet-wise service delivery performance when compared with the previous quarter (January- March, 2013), it showed an increase in FWCs (20.7%), MSUs (17.2%), Hakeem & Homoeopaths (H&H)(17.1%), Male Mobilizer (10.1%), RTIs (87.4%), FPAP (5.8 %), Marie Stopes Society of Pakistan (0.8%) ,SMC (11.4%), AJK (62.6%) , Gilgit-Baltistan (1.0%) and FATA (43.1%). Whereas other outlets depicted drop in performance i.e. RHS -A Centers (3.9%), RHS-B Centers (6.3%), PLDs (27.7%) and RMPs (5.6%). The details are given in **Table-4** and graphical presentation of data is as under:



5. Comparative Analysis of Contraceptive Usage by Outlet & Method

The Outlet-wise Comparison of Performance of Contraceptives Delivery Services is shown in **Table-5**. The details are as under:

(i) **Family Welfare Centers (FWCs):** The performance of FWCs during the current quarter compared with the previous quarter in terms of CYP observed an increase at National level by

20.7%. At Provincial level, increase has been observed in Punjab (16.7%), Sindh (9.1%) and Khyber Pakhtunkhwa (39.9%), whereas decrease has been observed in Balochistan (2.7%). However, Islamabad depicted an increase by 11.6%. In Method wise performance at National level, FWCs witnessed increase in Condoms (13.1%), Oral Pills (9.1%), IUDs (24.1%) and Injectables (8.7%).

(ii) Reproductive Health Services Centers (RHS-A): The performance of RHS-A centers during current quarter compared with the previous quarter in terms of CYP has shown a decrease at National level by 3.9%. At Provincial level, increase has been noted in Khyber Pakhtunkhwa (19.2%) whereas decrease is observed in all other provinces i.e. Punjab (4.2%), Sindh (9.1%), Balochistan (11.8%) and Islamabad (5.1%). In Method wise performance at National level, RHS-A have shown an increase in Condoms (8.2%), Oral Pills (2.8%), IUDs (9.4%), and in Injectables (3.1%) whereas decrease has been observed in Contraceptive Surgery (6.4%).

(iii) Reproductive Health Services Centers (RHS-B): The performance of RHS-B Centers during current quarter compared with the previous quarter in terms of CYP has revealed a decrease at National level by 6.3%. At Provincial level, increase is observed in Khyber Pakhtunkhwa (13.6%) and Islamabad (14.3%) whereas decrease has shown in Punjab (7.8%) and Balochistan (15.5%). In Method wise performance at National level, RHS-B centers have shown an increase in IUDs (0.7%) whereas other methods witnessed decrease i.e. condoms (20.6%), Oral Pills (78.6%), Injectable (17.3%) and in Contraceptive Surgery (11.1 %).

(iv) Mobile Service Units (MSUs): The performance of MSUs of the current quarter compared with the previous quarter in terms of CYP has increased at national level by 17.2% and at provincial level, an increase is observed in Sindh (6.0%) , Khyber Pakhtunkhwa (45.8 %) and Islamabad (1.0%) whereas decrease has witnessed in Balochistan (2.6%). In Method wise performance at national level, MSUs have shown an increase in Condoms (20.1%), IUDs (18.7%) and Injectables (13.5%) whereas decrease has observed in Oral Pills (0.7%).

(v) Provincial Line Departments (PLDs): The performance of PLDs of the current quarter compared with the previous quarter in terms of CYP has decreased at national level by 27.7%. At Provincial level, increase is observed in Sindh (524.7%), Khyber Pakhtunkhwa (6.6%), Balochistan (27.1%) and in Islamabad (46.0%) whereas decrease is observed in Punjab (34.3%). In Method wise performance at national level, PLDs have shown an increase in Oral Pills (40.8%) whereas decrease is observed in Condoms (45.4%), IUDs (30.8%) and Injectables (10.7%).

(vi) Registered Medical Practitioners (RMPs): The performance of RMPs of the current quarter compared with the previous quarter in terms of CYP, decrease has been observed at national level by 5.6% and at provincial level, increase has been observed in Sindh (32.3%), Khyber Pakhtunkhwa (176.9%) , Balochistan (29.0%) and Islamabad (41.7%) whereas decrease is observed in Punjab (26.7 %), In the Method wise performance at national level, RMPs have shown an increase in Condoms (3.0%) and Injectables (2.2%) whereas decrease is observed in Oral Pills (5.3%) and IUDs (7.9%).

(vii) **Hakeems and Homoeopaths (H&H):** The performance of H&H of the current quarter compared with the previous quarter in terms of CYP showed an increase of 17.1% at national level and at provincial level, increase has been observed in Punjab (9.2 %), Sindh (39.1%) and Khyber Pakhtunkhwa (35.8%) whereas decrease is observed in Balochistan (12.9%). In Method wise performance at national level, H&H have shown an increase in Condoms (14.3%) and Oral Pills (24.4%).

(viii) **Male Mobilizer(MM):** The performance of MM of the current quarter compared with the previous quarter in terms of CYP,has showed an increase at national level by 10.1% and at provincial level, increase has been observed in Punjab (1.2%), Sindh (12.9%), Khyber Pakhtunkhwa (33.6 %) and Islamabad (1.5%). In Method wise performance at national level, M&M have shown increase in Condoms (5.6%) and Oral Pills (25.5%).

(ix) **Family Planning Association of Pakistan (FPAP):** The overall contraceptive performance of FPAP has shown an increase by 5.8% in terms of CYP compared with the previous quarter. Method-wise performance has shown an increase in Condoms (11.0%), Oral Pills (29.6%), IUDs (12.2%) whereas decrease is observed in Injectables (9.5%) and Contraceptive Surgery (21.2%).

(x) **Azad Jammu & Kashmir (AJK):** The contraceptive performance during the current quarter for AJK has increased in terms of CYP by 62.6% when compared with the previous quarter. In the method-wise performance, increase has been observed in Condoms (6.4%), IUDs (95.1%) and C.S. cases (37.6%) whereas decrease has been recorded in Oral Pills (26.2%) and Injectables (5.8%).

(xi) **Gilgit – Baltistan (GB):** A minor increase of 1.0% has been reported in terms of CYP during the current quarter for GB when compared with the previous quarter. In the method-wise performance, increase has been depicted in Condoms (11.6%), Oral Pills (0.9%) and IUDs (1.1%) whereas decrease has been observed in Injectables (0.3%).

(xii) **FATA:** The contraceptive performance for FATA during the current quarter when compared with the previous quarter has reported an increase of 43.1% in terms of CYP. In method-wise performance, an increase has been shown in Condoms (6.9%), Oral Pills (74.3%) IUDs (54.9%) and Injectables (18.8%).

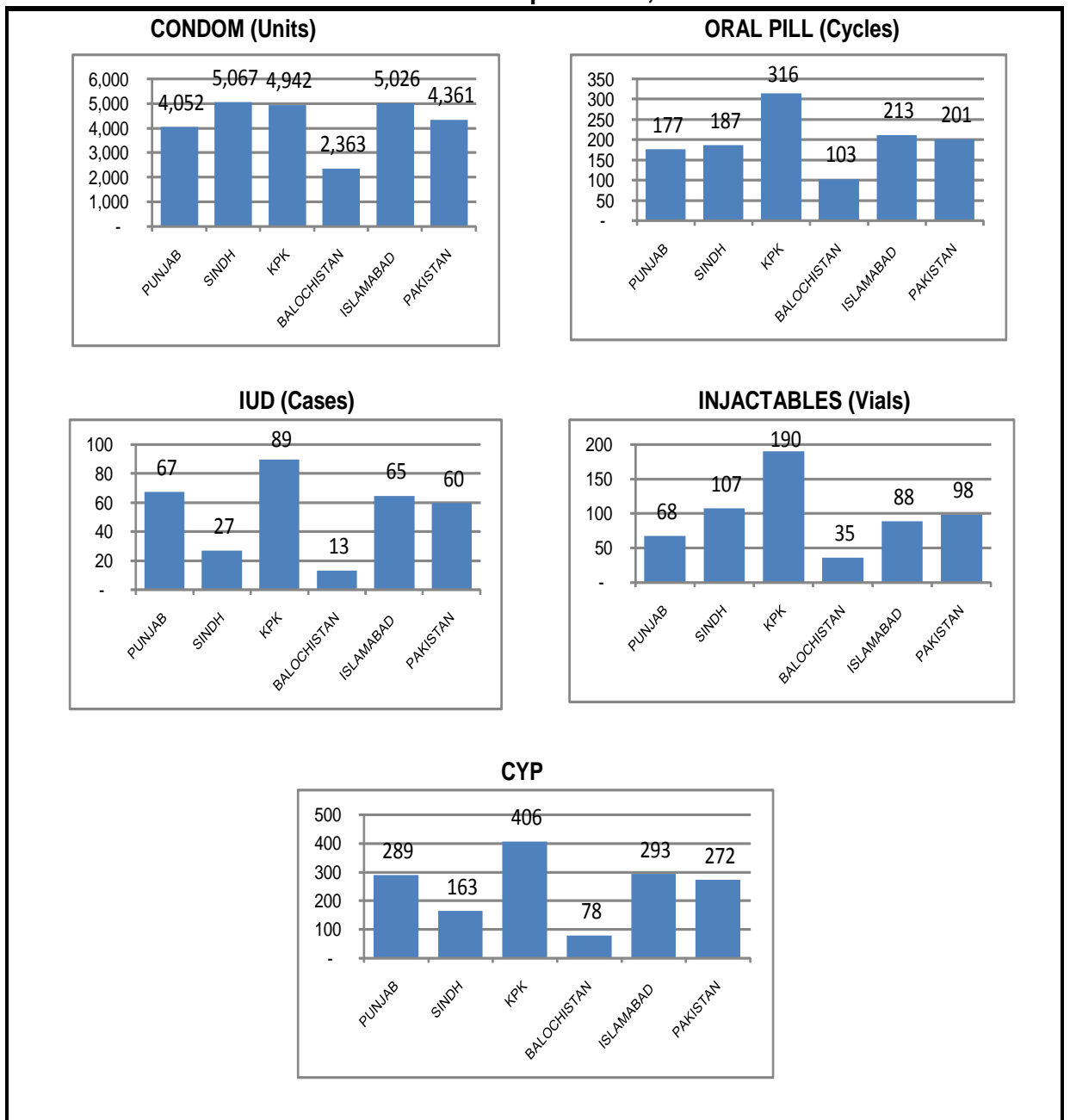
6. Method and Outlet-wise Average Performance

Method and Outlet-wise Average performance for the Federal and Provincial setup during the current quarter is given in **Table-6**. The details are as under:

(i) **Average performance per FWC by method:** The average performance obtained for Condoms is 5067 units per FWC sold in Sindh followed by 5026 units in Islamabad, 4942 units in Khyber Pakhtoonkhwa, 4052 units in Punjab and 2363 units in Balochistan. The maximum numbers i.e. 316 cycles of Oral Pills per FWC were dispensed by Khyber

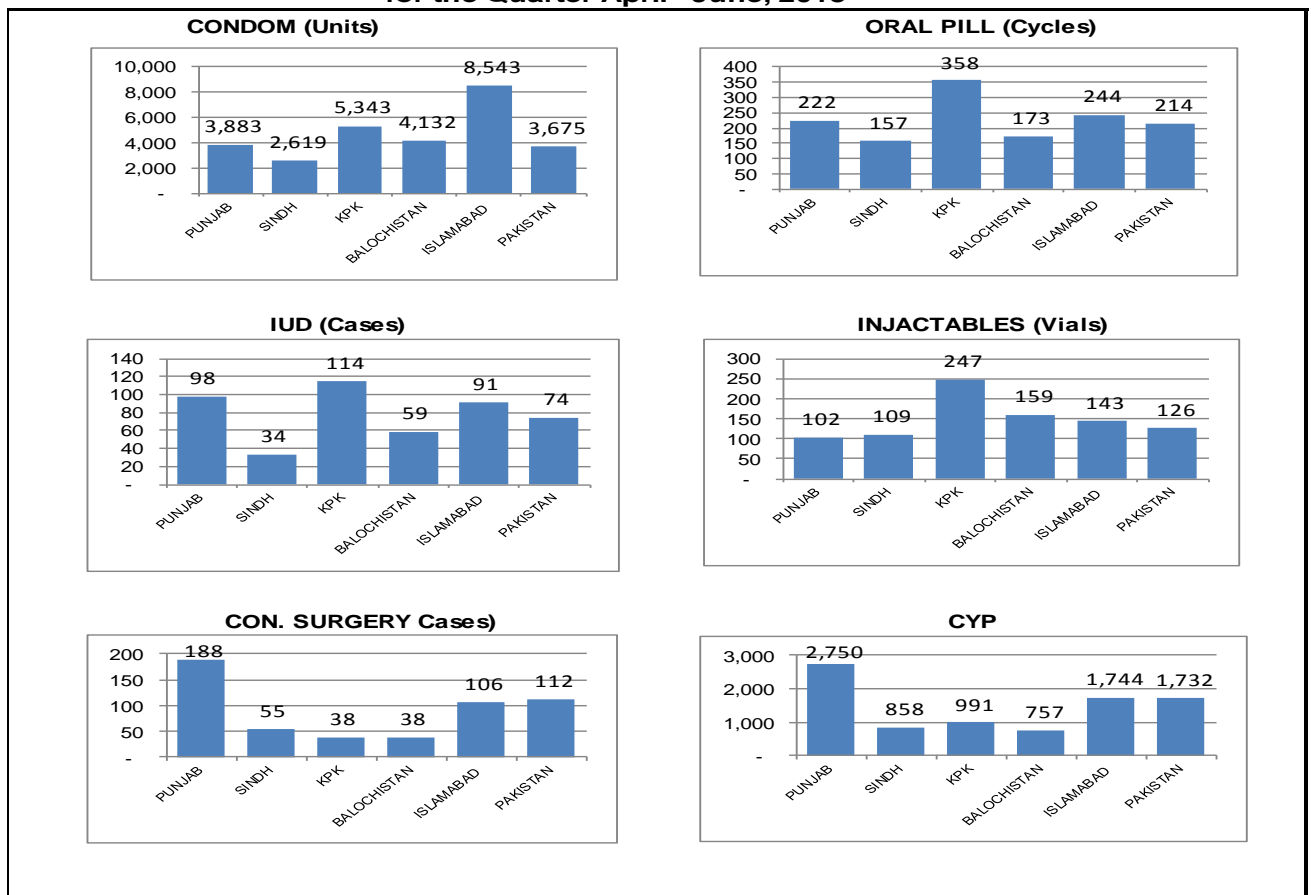
Pakhtunkhwa and the lowest 103 cycles were reported by FWCs of Balochistan. The highest insertions of IUDs i.e. 89 per FWC have been reported in Khyber Pakhtunkhwa and the lowest figure reported is 13 by Balochistan. By looking at the figure for injectables, it is observed that the maximum number has been reported for Khyber Pakhtunkhwa as 190 vials per FWC, while the minimum number i.e. 35 vials have been observed in Balochistan. When these contraceptives performances were translated into CYP, it is observed that on average, the highest number of CYP i.e. 406 has been reported by Khyber Pakhtunkhwa while the lowest 78 for Balochistan. The graphical presentation of each contraceptive method dispensed per FWC is presented below:

Figure-2 Average Achievement Per FWC by Method and Province for the Quarter April - June, 2013



(ii) **Average performance per RHS-A by method:** The highest average achievement for Condoms per RHS-A is 8543 units sold in Islamabad followed by 5343 units in Khyber Pakhtunkhwa, 4132 units in Balochistan, 3883 units in Punjab and 2619 units in Sindh. The Reproductive Health Services-A Centres of Khyber Pakhtunkhwa were able to dispense maximum number 358 cycles of Oral Pills as compared to the lowest 157 cycles of Oral Pills by RHS-A of Sindh. The highest insertions of IUDs 114 were reported by Khyber Pakhtunkhwa in comparison to the lowest 34 insertions carried out by RHS-A in Sindh. The highest 247 vials of Injectables were reported by Khyber Pakhtunkhwa in comparison to the lowest 102 vials reported by RHS-A of Punjab. The highest Contraceptive Surgery Cases were performed by Punjab (188) and the lowest (38) in Khyber Pakhtunkhwa & Balochistan. When the data of contraceptives performances were translated into CYP, it is observed that on average, the highest numbers of CYP i.e.2750 have been calculated for Punjab while the lowest 757 appeared for Balochistan. The graphical presentation of each contraceptive method recorded per RHS-A is presented below:

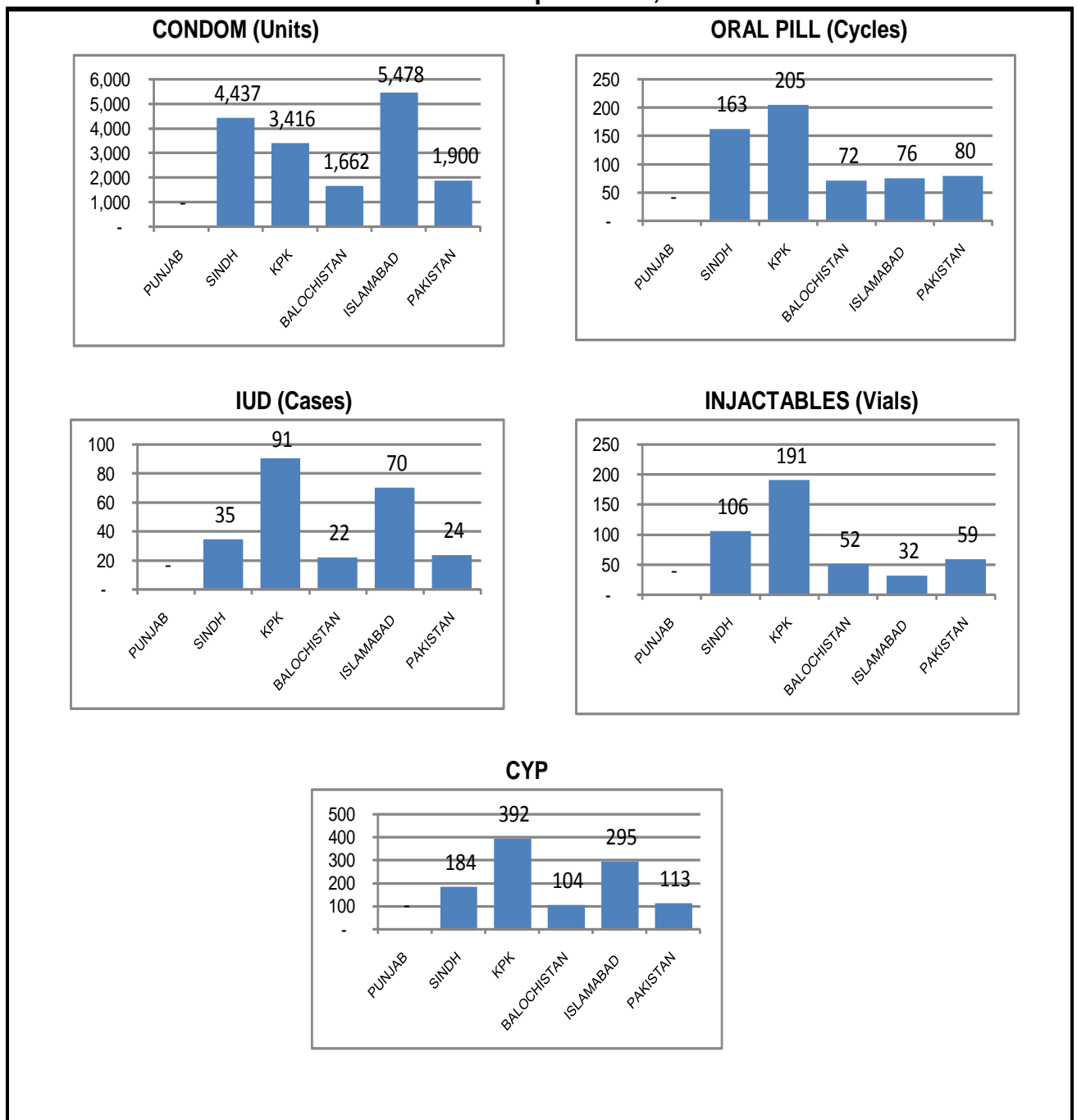
Figure-3 Average Achievement Per RHS-A by Method and Province for the Quarter April - June, 2013



(iii) **Average performance per MSU by method:** The highest average reported performance for Condoms per MSU is 5478 units in Islamabad followed by 4437 units in Sindh, 3416 units in Khyber Pakhtunkhwa and 1662 units in Balochistan. The Mobile Service Unit of Khyber Pakhtunkhwa was able to dispense highest numbers of 205 cycles of Oral Pills as compared to the lowest 72 cycles in Balochistan. The highest reported insertions of IUDs 91 took place in

Khyber Pakhtunkhwa compared to the lowest 22 IUDs in Balochistan. The highest numbers of Injectables 191 vials reported by Khyber Pakhtunkhwa as compared to the lowest 32 vials reported by MSUs of Islamabad. When the data is translated into CYP, it is observed that on the average, the highest numbers of CYP 392 were calculated for Khyber Pakhtunkhwa while the lowest 104 were for Balochistan. The graphical presentation of each contraceptive method as reported by MSUs is presented below:

Figure-4 Average Achievement Per MSU by Method and Province for the Quarter April - June, 2013



7. **Percentage Distribution of Total CYP By Source**

The percentage distribution of total CYP by data source during the current quarter reflected 36.73% in Punjab, 8.70% in Sindh, 12.59% in Khyber Pakhtunkhwa, 1.08% in Balochistan, 1.17% in Islamabad, 0.36% in FATA, 0.50% in AJK, 0.11% in Gilgit – Baltistan, 7.97% in FPAP, 29.68% in SMC and 1.05% in Marie Stops Society. The details are given in **Table-7**.

8. **Percentage Distribution of Total CYP by Service Outlet**

The percentage distribution of total CYP by Service outlets during the current quarter was 35.52% in FWCs, 15.85% in RHS-A, 3.0% in RHS-B, 1.36% in MSUs, 0.84% in PLDs, 1.42% in RMPs, 0.12% in Hakeem & Homeopath and 2.15% in Male Mobilizer. The details are presented in the **Table-8**.

9. **Percentage Distribution of Total CYP by Method**

The method-wise percentage contribution for IUDs, Contraceptive Surgery, Condoms, Injectables and Oral Pills in terms of total CYP has been 55.24%, 16.21%, 15.98%, 7.37% and 5.19% respectively. The details are given in **Table-9**.

10. **Family Planning and Mother & Child Health (MCH) Services**

The data indicates that during the current quarter 1,946,892 clients availed Family Planning Services of various Contraceptive methods out of which the Family Welfare Centers provided the services to 131,861 clients for Pre-natal and 94,424 clients for Post-natal Care. Apart from these, Family Welfare Centers has provided treatment to 720,981 clients for General Ailments (Children + Adults). The details are given in **Table-10**.

STATISTICAL TABLES

LIST OF TABLES

TABLE-1	CONTRACEPTIVE USAGE BY DATA SOURCE
TABLE-2	CONTRACEPTIVE USAGE BY METHOD
TABLE-3	COMPARATIVE ANALYSIS OF CONTRACEPTIVE USAGE BY SOURCE & METHOD
TABLE-4	OUTLET-WISE USAGE OF CONTRACEPTIVES
TABLE-5	COMPARATIVE ANALYSIS OF CONTRACEPTIVE USAGE BY OUTLET & METHOD
TABLE-6	METHOD AND OUTLET-WISE AVERAGE PERFORMANCE
TABLE-7	PERCENTAGE DISTRIBUTION OF TOTAL CYP BY SOURCE
TABLE-8	PERCENTAGE DISTRIBUTION OF TOTAL CYP BY SERVICE OUTLET
TABLE-9	PERCENTAGE DISTRIBUTION OF TOTAL CYP BY METHOD
TABLE-10	FAMILY PLANNING AND MOTHER & CHILD HEALTH (MCH) SERVICES

Table: 1

CONTRACEPTIVE USAGE BY DATA SOURCE

SOURCE	COUPLE YEARS OF PROTECTION (CYP)			%AGE CHANGE	
	Apr-Jun 2013	Apr-Jun 2012	Jan-Mar 2013	Apr-Jun 2013 Vs Apr-Jun 2012	Apr-Jun 2013 Vs Jan-Mar 2013
PUNJAB	798,835	846,909	766,542	-5.7	4.2
SINDH	189,127	247,339	184,959	-23.5	2.3
K.P.K	273,697	261,718	198,856	4.6	37.6
BALUCHISTAN	23,474	28,873	24,020	-18.7	-2.3
ISLAMABAD	25,496	30,197	21,790	-15.6	17.0
FATA	7,892	9,246	5,516	-14.6	43.1
AJK	10,871	6,679	6,687	62.8	62.6
GB	2,472	2,140	2,446	15.5	1.0
RTIs	1,165	1,741	621	-33.1	87.4
NGO (FPAP)	173,416	140,031	163,887	23.8	5.8
MARIE STOPES	22,768	20,774	22,583	9.6	0.8
SMC	645,476	375,659	579,623	71.8	11.4
Pakistan	2,174,688	1,971,304	1,977,532	10.32	9.97

Table: 2

CONTRACEPTIVE USAGE BY METHOD

METHOD	OVERALL PERFORMANCE			%AGE CHANGE	
	Apr-Jun 2013	Apr-Jun 2012	Jan-Mar 2013	Apr-Jun 2013 Vs Apr-Jun 2012	Apr-Jun 2013 Vs Jan-Mar 2013
CONDOMS CYP	50,046,762 347,547	25,227,900 175,194	46,932,339 325,919	98.4	6.6
ORAL PILL CYP	1,694,434 112,962	1,691,932 112,795	1,515,978 101,065	0.1	11.8
IUD CYP	343,217 1,201,260	332,783 1,164,741	294,317 1,030,110	3.1	16.6
INJECTABLE CYP	801,907 160,381	796,497 159,299	707,316 141,463	0.7	13.4
CS CYP	28,203 352,538	28,742 359,275	30,318 378,975	-1.9	-7.0
Pakistan CYP	2,174,688	1,971,304	1,977,532	10.32	9.97

Table: 3

COMPARATIVE ANALYSIS OF CONTRACEPTIVE USAGE BY SOURCE & METHOD

SOURCE	CONDOM (Units)			ORAL PILL (Cycles)			IUD (Insertions)			INJECTABLES (Vials)			CON SURGERY (Cases)			COUPLE YEARS OF PROTECTION		
	Apr-Jun 2013	Jan-Mar 2013	% Chang	Apr-Jun 2013	Jan-Mar 2013	% Change	Apr-Jun 2013	Jan-Mar 2013	% Change	Apr-Jun 2013	Jan-Mar 2013	% Change	Apr-Jun 2013	Jan-Mar 2013	% Change	Apr-Jun 2013	Jan-Mar 2013	% Change
	PUNJAB	10,063,179	9,965,338	1.0	408,398	375,194	8.8	125,509	112,008	12.1	124,845	124,675	0.1	18,998	20,429	-7.0	798,835	766,542
SINDH	4,614,898	3,905,736	18.2	177,640	155,321	14.4	21,939	21,379	2.6	83,310	78,774	5.8	4,143	4,552	-9.0	189,127	184,959	2.3
K.P.K	4,186,946	3,269,122	28.1	253,070	215,054	17.7	53,768	36,060	49.1	115,306	98,973	16.5	1,320	1,265	4.3	273,697	198,856	37.6
BALUCHISTAN	545,775	439,872	24.1	22,508	27,590	-18.4	3,798	3,846	-1.2	9,387	9,451	-0.7	241	302	-20.2	23,474	24,020	-2.3
ISLAMABAD	277,163	277,386	-0.1	10,084	10,668	-5.5	4,797	3,807	26.0	6,799	4,578	48.5	380	393	-3.3	25,496	21,790	17.0
NGO (FPAP)	223,737	201,609	11.0	39,783	30,686	29.6	38,256	34,084	12.2	112,007	123,800	-9.5	1,033	1,311	-21.2	173,416	163,887	5.8
SMC	29,903,108	28,657,338	4.3	750,614	677,132	10.9	84,765	74,494	13.8	332,984	250,651	32.8	1,960	1,969	-0.5	645,476	579,623	11.4
MARIE STOPE	23,601	26,974	-12.5	3,290	4,005	-17.9	6,330	6,241	1.4	1,149	1,427	-19.5	0	0	0.0	22,768	22,583	0.8
AJK	66,251	62,275	6.4	2,988	4,048	-26.2	2,249	1,153	95.1	3,703	3,931	-5.8	128	93	37.6	10,871	6,687	62.6
GB	16,262	14,576	11.6	3,352	3,323	0.9	356	352	1.1	4,446	4,458	-0.3	0	0	0.0	2,472	2,446	1.0
RTIs	7,424	1,343	452.8	547	246	122.4	273	133	105.3	606	401	51.1	0	4	-100.0	1,165	621	87.4
FATA	118,418	110,770	6.9	22,160	12,711	74.3	1,177	760	54.9	7,365	6,197	18.8	0	0	0.0	7,892	5,516	43.1
Pakistan	50,046,762	46,932,339	6.6	1,694,434	1,515,978	11.8	343,217	294,317	16.6	801,907	707,316	13.4	28,203	30,318	-7.0	2,174,688	1,977,532	9.97

Table: 4

OUTLET-WISE USAGE OF CONTRACEPTIVE

OUTLETS	COUPLE YEARS OF PROTECTION (CYP)			%AGE CHANGE	
	Apr-Jun 2013	Apr-Jun 2012	Jan-Mar 2013	Apr-Jun 2013 Vs Apr-Jun 2012	Apr-Jun 2013 Vs Jan-Mar 2013
	FWC	772,421	817,510	639,769	-5.5
RHS-A	344,632	341,508	358,585	0.9	-3.9
RHS-B	65,347	73,175	69,723	-10.7	-6.3
MSU	29,501	71,416	25,172	-58.7	17.2
HAKEEM & HOMEOPATH	2,713	2,376	2,316	14.2	17.1
MALE MOBILIZER	46,847	47,045	42,557	-0.4	10.1
PLDs	18,323	31,391	25,360	-41.6	-27.7
RMPs	30,845	30,613	32,686	0.8	-5.6
RTIs	1,165	1,741	621	-33.1	87.4
NGO (FPAP)	173,416	140,031	163,887	23.8	5.8
MARIE STOPES	22,768	20,774	22,583	9.6	0.8
SMC	645,476	375,659	579,623	71.8	11.4
AJK	10,871	6,679	6,687	62.8	62.6
GB	2,472	2,140	2,446	15.5	1.0
FATA	7,892	9,246	5,516	-14.6	43.1
Pakistan	2,174,688	1,971,304	1,977,532	10.32	9.97

Table: 5

COMPARATIVE ANALYSIS OF CONTRACEPTIVE USAGE BY OUTLET & METHOD

OUTLETS & METHODS	CONDOM (Units)			ORAL PILL (Cycles)			IUD (Insertions)			INJECTABLES (Vials)			CON SURGERY (Cases)			COUPLE YEARS OF PROTECTION		
	Apr-Jun 2013	Jan-Mar 2013	% Chang	Apr-Jun 2013	Jan-Mar 2013	% Change	Apr-Jun 2013	Jan-Mar 2013	% Change	Apr-Jun 2013	Jan-Mar 2013	% Change	Apr-Jun 2013	Jan-Mar 2013	% Change	Apr-Jun 2013	Jan-Mar 2013	% Change
	2013	2013		2013	2013		2013	2013		2013	2013		2013	2013		2013	2013	
FWC	12,402,278	10,969,249	13.1	572,613	524,941	9.1	169,313	136,429	24.1	277,620	255,482	8.7	0	0	0.0	772,421	639,769	20.7
PUNJAB	6,078,684	5,862,038	3.7	265,053	241,331	9.8	100,880	84,391	19.5	101,371	95,994	5.6	0	0	0.0	433,237	371,365	16.7
SINDH	3,182,167	2,592,307	22.8	117,426	106,702	10.1	16,885	16,001	5.5	67,148	63,972	5.0	0	0	0.0	102,454	93,913	9.1
K.P.K	2,629,368	2,069,502	27.1	168,000	151,590	10.8	47,584	32,152	48.0	101,049	87,599	15.4	0	0	0.0	216,213	154,529	39.9
BALUCHISTAN	366,310	306,176	19.6	15,969	19,343	-17.4	2,092	2,232	-6.3	5,488	5,647	-2.8	0	0	0.0	12,028	12,357	-2.7
ISLAMABAD	145,749	139,226	4.7	6,165	5,975	3.2	1,872	1,653	13.2	2,564	2,270	13.0	0	0	0.0	8,488	7,605	11.6
RHS-A	731,372	676,026	8.2	42,612	41,447	2.8	14,820	13,549	9.4	25,087	24,339	3.1	22,386	23,907	-6.4	344,632	358,585	-3.9
PUNJAB	345,596	333,448	3.6	19,786	18,305	8.1	8,707	8,009	8.7	9,073	9,387	-3.3	16,696	17,761	-6.0	244,708	255,457	-4.2
SINDH	196,435	188,828	4.0	11,757	12,368	-4.9	2,514	2,927	-14.1	8,205	7,769	5.6	4,143	4,552	-9.0	64,375	70,834	-9.1
K.P.K	138,922	109,737	26.6	9,299	8,565	8.6	2,973	2,019	47.3	6,424	5,640	13.9	1,000	968	3.3	25,775	21,628	19.2
BALUCHISTAN	24,789	16,573	49.6	1,037	1,357	-23.6	353	310	13.9	955	1,179	-19.0	230	290	-20.7	4,543	5,151	-11.8
ISLAMABAD	25,630	27,440	-6.6	733	852	-14.0	273	284	-3.9	430	364	18.1	317	336	-5.7	5,231	5,514	-5.1
RHS-B	17,325	21,808	-20.6	773	3,610	-78.6	8,782	8,718	0.7	3,689	4,462	-17.3	2,696	3,034	-11.1	65,347	69,723	-6.3
PUNJAB	12,335	17,598	-29.9	427	3,066	-86.1	8,576	8,594	-0.2	3,404	4,186	-18.7	2,302	2,668	-13.7	59,586	64,593	-7.8
SINDH	0	0	0.0	0	0	0.0	0	0	0.0	0	0	0.0	0	0	0.0	0	0	0.0
K.P.K	1,090	710	53.5	216	314	-31.2	126	54	133.3	136	126	7.9	320	297	7.7	4,490	3,953	13.6
BALUCHISTAN	500	100	400.0	30	110	-72.7	15	20	-25.0	79	110	-28.2	11	12	-8.3	211	250	-15.5
ISLAMABAD	3,400	3,400	0.0	100	120	-16.7	65	50	30.0	70	40	75.0	63	57	10.5	1,059	927	14.3
MSU	493,929	411,416	20.1	20,845	20,991	-0.7	6,169	5,198	18.7	15,449	13,615	13.5	0	0	0.0	29,501	25,172	17.2
PUNJAB	0	0	0.0	0	0	0.0	0	5	-100.0	0	0	0.0	0	0	0.0	0	18	-100.0
SINDH	319,486	260,033	22.9	11,754	11,218	4.8	2,500	2,451	2.0	7,627	6,953	9.7	0	0	0.0	13,278	12,523	6.0
K.P.K	102,482	87,052	17.7	6,147	5,978	2.8	2,715	1,744	55.7	5,724	4,816	18.9	0	0	0.0	11,769	8,070	45.8
BALUCHISTAN	66,483	58,831	13.0	2,868	3,612	-20.6	884	931	-5.0	2,066	1,812	14.0	0	0	0.0	4,160	4,270	-2.6
ISLAMABAD	5,478	5,500	-0.4	76	183	-58.5	70	67	4.5	32	34	-5.9	0	0	0.0	295	292	1.0
PLD	69,635	127,493	-45.4	16,204	11,509	40.8	4,329	6,259	-30.8	8,038	9,002	-10.7	0	0	0.0	18,323	25,360	-27.7
PUNJAB	42,931	105,972	-59.5	14,598	10,079	44.8	3,557	5,677	-37.3	6,600	8,097	-18.5	0	0	0.0	15,041	22,897	-34.3
SINDH	550	730	-24.7	200	0	0.0	15	0	0.0	10	32	-68.8	0	0	0.0	72	11	524.7
K.P.K	4,254	1,830	132.5	401	273	46.9	53	54	-1.9	8	42	-81.0	0	0	0.0	243	228	6.6
BALUCHISTAN	15,500	10,161	52.5	715	797	-10.3	454	353	28.6	620	556	11.5	0	0	0.0	1,868	1,470	27.1
ISLAMABAD	6,400	8,800	-27.3	290	360	-19.4	250	175	42.9	800	275	190.9	0	0	0.0	1,099	753	46.0
RMP	676,933	657,025	3.0	27,001	28,516	-5.3	6,398	6,947	-7.9	9,754	9,541	2.2	0	0	0.0	30,845	32,686	-5.6
PUNJAB	400,115	436,136	-8.3	11,675	15,544	-24.9	3,789	5,332	-28.9	4,397	7,011	-37.3	0	0	0.0	17,698	24,129	-26.7
SINDH	103,050	90,590	13.8	5,181	4,175	24.1	25	0	0.0	310	38	715.8	0	0	0.0	1,211	915	32.3
K.P.K	74,356	51,301	44.9	5,656	3,442	64.3	317	37	756.8	1,965	750	162.0	0	0	0.0	2,396	865	176.9
BALUCHISTAN	70,326	46,358	51.7	1,794	2,213	-18.9	0	0	0.0	179	147	21.8	0	0	0.0	644	499	29.0
ISLAMABAD	29,086	32,640	-10.9	2,695	3,142	-14.2	2,267	1,578	43.7	2,903	1,595	82.0	0	0	0.0	8,897	6,278	41.7
H&H	278,206	243,390	14.3	11,685	9,393	24.4	0	0	0.0	10	0	0.0	0	0	0.0	2,713	2,316	17.1
PUNJAB	189,423	180,479	5.0	7,084	5,752	23.2	0	0	0.0	0	0	0.0	0	0	0.0	1,788	1,637	9.2
SINDH	54,492	39,099	39.4	2,447	1,787	36.9	0	0	0.0	10	0	0.0	0	0	0.0	544	391	39.1
K.P.K	32,424	22,139	46.5	2,059	1,696	21.4	0	0	0.0	0	0	0.0	0	0	0.0	362	267	35.8
BALUCHISTAN	1,867	1,673	11.6	95	158	-39.9	0	0	0.0	0	0	0.0	0	0	0.0	19	22	-12.9
MM	5,018,283	4,751,047	5.6	179,967	143,420	25.5	0	0	0.0	0	10	-100.0	0	0	0.0	46,847	42,557	10.1
PUNJAB	2,994,095	3,029,667	-1.2	89,775	81,117	10.7	0	0	0.0	0	0	0.0	0	0	0.0	26,777	26,447	1.2
SINDH	758,718	734,149	3.3	28,875	19,071	51.4	0	0	0.0	0	10	-100.0	0	0	0.0	7,194	6,372	12.9
K.P.K	1,204,050	926,851	29.9	61,292	43,196	41.9	0	0	0.0	0	0	0.0	0	0	0.0	12,448	9,316	33.6
BALUCHISTAN	0	0	0.0	0	0	0.0	0	0	0.0	0	0	0.0	0	0	0.0	0	0	0.0
ISLAMABAD	61,420	60,380	1.7	25	36	-30.6	0	0	0.0	0	0	0.0	0	0	0.0	428	422	1.5
Sub Total	30,358,801	29,074,885	4.4	822,734	732,151	12.4	133,406	117,217	13.8	462,260	390,865	18.3	3,121	3,377	-7.6	864,059	781,364	10.6
NGO (FPAP)	223,737	201,609	11.0	39,783	30,686	29.6	38,256	34,084	12.2	112,007	123,800	-9.5	1,033	1,311	-21.2	173,416	163,887	5.8
SMC	29,903,108	28,657,338	4.3	750,614	677,132	10.9	84,765	74,494	13.8	332,984	250,651	32.8	1,960	1,969	-0.5	645,476	579,623	11.4
MARIE STOPE	23,601	26,974	-12.5	3,290	4,005	-17.9	6,330	6,241	1.4	1,149	1,427	-19.5	0	0	0.0	22,768	22,583	0.8
AJK	66,251	62,275	6.4	2,988	4,048	-26.2	2,249	1,153	95.1	3,703	3,931	-5.8	128	93	37.6	10,871	6,687	62.6
GB	16,262	14,576	11.6	3,352	3,323	0.9	356	352	1.1	4,446	4,458	-0.3	0	0	0.0	2,472	2,446	1.0
RTIs	7,424	1,343	452.8	547	246	122.4	273	133	105.3	606	401	51.1	0	4	-100.0	1,165	621	87.4
FATA	118,418	110,770	6.9	22,160	12,711	74.3	1,177	760	54.9	7,365	6,197	18.8	0	0	0.0	7,892	5,516	43.1
Pakistan	50,046,762	46,932,339	6.6	1,694,434	1,515,978	11.8	343,217	294,317	16.6	801,907	707,316	13.4	28,203	30,318	-7.0	2,174,688	1,977,532	9.97

Table-6

METHOD & OUTLET WISE AVERAGE PERFORMANCE

OUTLET	NO. OF OUTLETS	CONDOM		ORAL PILL		IUD		INJECTABLE		CON SURGERY		CYP	
		(Units)		(Cycles)		(Insertions)		(Vials)		(Cases)			
		APL - JUN.	Per	APL - JUN	Per	APL - JUN	Per	APL - JUN	Per	APL - JUN	Per	APL - JUN	Per
		2013	Outlet	2013	Outlet	2013	Outlet	2013	Outlet	2013	Outlet	2013	Outlet
FWCs													
PUNJAB	1500	6,078,684	4,052	265,053	177	100,880	67	101,371	68	-	-	433,237	289
SINDH	628	3,182,167	5,067	117,426	187	16,885	27	67,148	107	-	-	102,454	163
KHYBER PAKHTUNKHWA	532	2,629,368	4,942	168,000	316	47,584	89	101,049	190	-	-	216,213	406
BALUCHISTAN	155	366,310	2,363	15,969	103	2,092	13	5,488	35	-	-	12,028	78
ISLAMABAD	29	145,749	5,026	6,165	213	1,872	65	2,564	88	-	-	8,488	293
PAKISTAN	2844	12,402,278	4,361	572,613	201	169,313	60	277,620	98	-	-	772,421	272
RHS-A CENTRES													
PUNJAB	89	345,596	3,883	19,786	222	8,707	98	9,073	102	16,696	188	244,708	2,750
SINDH	75	196,435	2,619	11,757	157	2,514	34	8,205	109	4,143	55	64,375	858
KHYBER PAKHTUNKHWA	26	138,922	5,343	9,299	358	2,973	114	6,424	247	1,000	38	25,775	991
BALUCHISTAN	6	24,789	4,132	1,037	173	353	59	955	159	230	38	4,543	757
ISLAMABAD	3	25,630	8,543	733	244	273	91	430	143	317	106	5,231	1,744
PAKISTAN	199	731,372	3,675	42,612	214	14,820	74	25,087	126	22,386	112	344,632	1,732
MSUs													
PUNJAB	117	-	-	-	-	-	-	-	-	-	-	-	-
SINDH	72	319,486	4,437	11,754	163	2,500	35	7,627	106	-	-	13,278	184
KHYBER PAKHTUNKHWA	30	102,482	3,416	6,147	205	2,715	91	5,724	191	-	-	11,769	392
BALUCHISTAN	40	66,483	1,662	2,868	72	884	22	2,066	52	-	-	4,160	104
ISLAMABAD	1	5,478	5,478	76	76	70	70	32	32	-	-	295	295
PAKISTAN	260	493,929	1,900	20,845	80	6,169	24	15,449	59	-	-	29,501	113

Table: 7

PERCENTAGE DISTRIBUTION OF TOTAL CYP BY SOURCE

SOURCE	CYP	Percentage
PUNJAB	798,835	36.73
SINDH	189,127	8.70
K.P.K	273,697	12.59
BALUCHISTAN	23,474	1.08
ISLAMABAD	25,496	1.17
FATA	7,892	0.36
AJK	10,871	0.50
GB	2,472	0.11
RTIs	1,165	0.05
NGO (FPAP)	173,416	7.97
SMC	645,476	29.68
MARIE STOPES	22,768	1.05
Pakistan	2,174,688	100.00

Table: 8 **PERCENTAGE DISTRIBUTION OF TOTAL CYP BY SERVICE OUTLET**

OUTLETS	CYP	Percentage
FWC	772,421	35.52
RHS-A	344,632	15.85
RHS-B	65,347	3.00
MSU	29,501	1.36
PLDs	18,323	0.84
RMPs	30,845	1.42
HAKEEM & HOMEOPATH	2,713	0.12
MALE MOBILIZER	46,847	2.15
FATA	7,892	0.36
AJK	10,871	0.50
GB	2,472	0.11
RTIs	1,165	0.05
NGO (FPAP)	173,416	7.97
SMC	645,476	29.68
MARIE STOPES	22,768	1.05
Pakistan	2,174,688	100.00

Table: 9 **PERCENTAGE DISTRIBUTION OF TOTAL CYP BY METHODS**

METHODS	CYP	Percentage
CONDOMS	347,547	15.98
ORAL PILL	112,962	5.19
IUD	1,201,260	55.24
INJECTABLE	160,381	7.37
CS	352,538	16.21
Pakistan	2,174,688	100.00

Table-10

FAMILY PLANNING AND MOTHER & CHILD HEALTH (MCH) SERVICES

SOURCE	F.P CLIENTS	Pre Natal	Post Natal	SubTotal (3+4)	Children	Adult	Sub Total (6+7)	Col (5+8)	Col (2+5+8)
1	2	3	4	5	6	7	8	9	10
PUNJAB	669,601	43,616	25,501	69,117	49,691	151,105	200,796	269,913	939,514
SINDH	421,005	46,300	40,889	87,189	233,070	0	233,070	320,259	741,264
K.P.K	281,860	24,686	16,332	41,018	62,223	140,215	202,438	243,456	525,316
BALUCHISTAN	41,404	4,862	3,461	8,323	9,238	34,241	43,479	51,802	93,206
ISLAMABAD	476,976	1,568	1,127	2,695	5,101	10,729	15,830	18,525	495,501
AJK	16,755	3,355	1,543	4,898	2,627	6,138	8,765	13,663	30,418
GB	10,332	873	868	1,741	1,331	1,819	3,150	4,891	15,223
FATA	28,959	6,601	4,703	11,304	4,617	8,836	13,453	24,757	53,716
Total	1,946,892	131,861	94,424	226,285	367,898	353,083	720,981	947,266	2,894,158

GENESIS OF THE REPORT

The Contraceptive Performance Report owes to devoted and tireless efforts of the following staff of Pakistan Bureau of Statistics (PBS):

1. Dr. Bahrawar Jan, Deputy Director General
2. Mr. Ghulam Muhammad, Director
3. Mr. Muhammad Jawed Rana, Director Data Processing
4. Ms. Rizwana Siddique, Chief Statistical Officer
5. Syed Adil Hashmi, Statistical Officer
6. Mr. Arshad Ahmad Khan, Research Supervisor
7. Mr. Mahmood-ul-Hasan, Statistical Investigator
8. Mr. Ghulam Kibria, Data Processing Assistant