



# CONTRACEPTIVE PERFORMANCE REPORT

OCTOBER-DECEMBER 2010



***GOVERNMENT OF PAKISTAN  
STATISTICS DIVISION  
FEDERAL BUREAU OF STATISTICS***



## PREFACE

Federal Bureau of Statistics (FBS) is a prime official agency of Pakistan which is responsible to collection, compilation and dissemination of reliable and timely statistical information to the policy makers, planners and researchers. It publishes a variety of data, primary as well as secondary, especially on economics and social aspects of the country.

In pursuance of 18th Constitutional Amendment Act 2010, the Ministry of Population Welfare (MoPW) has ceased to exist w.e.f. 07-12-2010. The functions of Collection, Maintenance and analysis of demographic Population Statistics being handled by Directorate of Service Statistics & Data Processing (SS&DP) of MoPW has been relocated to Statistic Division (Federal Bureau of Statistics) vide Cabinet Division's Notification No. 4-17/2010-Min-I dated 2nd December, 2010. To implement the decision of the Government of Pakistan, the Statistics Division has established a new section in FBS titled "Population Welfare Statistics Section (PWSS)" for collection and consolidate the contraceptive performance data of the country. The Quarterly Contraceptive Performance Report of Population Welfare Program for the quarter October - December, 2010 has been prepared for the first time under Population Welfare Statistics Section, Federal Bureau of Statistics.

The report encompasses the contraceptive performance at all service delivery points in the country. The Federal Bureau of Statistics (FBS) aims at ensuring nationwide coverage of Family Planning/Reproductive Health activities. The quarterly contraceptive performance report is an important intervention to gauge outlets-wise, sector-wise and method-wise contraceptive progress and observe the direction and track/trend for future Contraceptive Requirement and Distribution (CRD) in the country.

Above all, I am grateful to Provincial Population Welfare Departments (PPWDs), the District Population Welfare Office, Islamabad Capital Territory (ICT), Population Welfare Department Azad Jammu & Kashmir (AJK), Population Welfare Programme Gilgit-Baltistan(GB), Social Marketing of Contraceptive (SMC) and other stakeholders for their supports in this important input of contraceptive usage.

I hope, the user of the report would be able to learn about important facts of contraceptive activities and assists in the field of population and development. Comments and suggestions for improvement of Contraceptive Performance Report would be highly appreciated.

**Arif Mahmood Cheema**  
**Director General**

Federal Bureau of Statistics  
Statistics Division  
Government of Pakistan



# CONTENTS

	Page No.
<b>PREFACE</b>	i
<b>CONTENTS</b>	iii
<b>SUMMARY</b>	v
<b>INTRODUCTION</b>	1
<b>Methodology</b>	1
<b>Concept and Definitions</b>	2
<b>Data Sources</b>	3
<b>RESULTS AND DISCUSSION</b>	4
1. Province -wise Comparison in terms of Couple Years of Protection	4
2. Outlets-wise Comparison in terms of Couple Year of Protection	4
3. Method-wise Comparison of Contraceptives Performance	5
4. Province/Sector and Method-wise Comparison of Contraceptives Performance with Previous quarter	6
5. Outlets/ Province/Sector-wise Comparison of Performance of Contraceptives Delivery Services with Previous quarter:	6-8
<i>i. Family Welfare Centers (FWCs)</i>	6
<i>ii. Reproductive Health Services Centers (RHS-A)</i>	7
<i>iii. Reproductive Health Services Centres (RHS-B)</i>	7
<i>iv. Mobile Service Units (MSUs)</i>	7
<i>v. Provincial Line Departments (PLDs) including outlets of Health Department</i>	7
<i>vi. Registered Medical Practitioners (RMPs)</i>	8
<i>vii. Hakeems and Homoeopaths (H&amp;H)</i>	8
<i>viii. Male Mobilizer</i>	8
<i>ix. Non-Governmental Organization (NGO)-FPAP</i>	8
<i>x. Azad Jammu &amp; Kashmir (AJK)</i>	8
<i>xi. Gilgit – Baltistan (GB)</i>	8
6. Method and Outlets- wise Average performance	9
<i>i. Average performance per FWC by method</i>	9
<i>ii. Average performance per RHS-A by method</i>	9
<i>iii. Average performance per MSU by method</i>	10
	10
7. Percentage Distribution of Total CYP by Province/Sector During the Current Quarter	11
8. Percentage Distribution of Total CYP by Service Outlets During the Current Quarter	11
9. Percentage Distribution of Total CYP of Contraceptive Performance by Methods during the Current Quarter	12
10. Province-Wise Family Planning and Mother & Child Health (MCH) Services Delivery	12
<b>STATISTICAL TABLES</b>	13-19



## SUMMARY

The salient feature of the report based on the data of Population Welfare activities in the country are given as under:-

- The overall, Contraceptive Performance for the quarter of October – December 2010 in terms of CYP by comparing with the corresponding quarter of the last year (October - December 2009), the performance has decreased by 1.4%, when the current quarter performance compared with the previous quarter (July - September 2010) it has showed an increase by 17.1%.
- The Province-wise Contraceptive performance of current quarter when compared with the same quarter of the previous year (2009) it reflect a decrease in three provinces namely, Punjab, Sindh, and Balochistan by 14.1%, 6.3% and 13.3% respectively while a slight increase of 0.6 % has been seen in Khyber Pakhtunkhwa. In Islamabad, comparison of the current quarter with the corresponding quarter of 2009 depicts decrease by 7.0%. On the other hand when contraceptive performance compared with previous quarter (July - September 2010), it has showed an increase of 22.5% in Sindh followed by 10.9% in KPK, 10.6% in Punjab, 1.3% in Balochistan and district Islamabad by 4.9%. A significant increase 86.0% has been observed in FATA Sector.

### Province/Sector-Wise Couple Years of Protection (CYP) Growth (%)

PROVINCE/SECTOR	COUPLE YEARS OF PROTECTION (CYP)			%age Change	%age change
	Oct-Dec	Oct-Dec	July-Sep	Oct-Dec 2010/	Oct-Dec 2010/
	2010	2009	2010	Oct-Dec 2009	Jul-Sept. 2010
PUNJAB	719,830	837,756	650,757	-14.1	10.6
SINDH	285,019	304,299	232,577	-6.3	22.5
KHYBER PAKHTUNKHWA	196,244	195,005	176,998	0.6	10.9
BALUCHISTAN	29,008	33,457	28,644	-13.3	1.3
ISLAMABAD	23,158	24,912	22,077	-7.0	4.9
FATA	8,473	4,602	4,555	84.1	86.0
AJK	6,561	7,036	6,217	-6.8	5.5
GILGIT BALTISTAN (GB)	2,733	2,329	2,421	17.3	12.9
REGIONAL TRAINING INSTITUTES (RTIs)	2,266	3,355	1,726	-32.5	31.3
NON-GOVERNMENTAL ORGANIZATIONS (NGOs)	137,825	106,457	131,022	29.5	5.2
MARIE STOPES SOCIETY OF PAKISTAN	28,752	-	24,359	-	18.0
PUBLIC PRIVATE SECTOR ORGANIZATIONS (PPSO)	-	-	53	-	-
SOCIAL MARKETTING OF CONTRACEPTIVES (SMC)	756,281	707,979	593,389	6.8	27.5
<b>PAKISTAN</b>	<b>2,196,149</b>	<b>2,227,187</b>	<b>1,874,796</b>	<b>-1.4</b>	<b>17.1</b>

- Methods-wise Contraceptive Performance based on CYP presented in the table below, the Contraceptive performance of current quarter when compared with the same quarter of the previous year (2009), shows a decreasing trend in Oral Pills, and Contraceptive Surgery and IUD by 8.15%, 1.92% and 1.25% respectively. Whereas a minor increase of 0.42% in Injectable and 0.02% in Condom has been observed.

**Method-Wise Performance and Couple Years of Protection (CYP) Growth (%)**

Table-3 METHOD WISE PERFORMANCE DURING OCTOBER-DECEMBER 2010 OVER THE PREVIOUS QUARTER AND CORRESPONDING QUARTER OF THE LAST YEAR					
METHOD	OVERALL PERFORMANCE			%age Change	
	Oct-Dec 2010	Oct-Dec 2009	July-Sep 2010	Oct-Dec 2010/ Oct-Dec 2009	Oct-Dec 2010/ Jul-Sept. 2010
CONDOM (Units)	48687473	48677228	31995714		
CYP	338107	338036	222192	0.0	52.2
ORAL PILL (Cycles)	1345608	1465038	1363844		
CYP	89707	97669	90923	-8.2	-1.3
IUD (Insertions)	321176	325248	290795		
CYP	1124116	1138368	1017783	-1.3	10.4
INJECTIBLE (Vials)	783281	779997	728490		
CYP	156656	155999	145698	0.4	7.5
CON. SURGERY (Cases)	39005	39769	31856		
CYP	487563	497113	398200	-1.9	22.4
<b>TOTAL CYP</b>	<b>2196149</b>	<b>2227185</b>	<b>1874796</b>	<b>-1.4</b>	<b>17.1</b>



## INTRODUCTION

Rising population growth poses serious threats to a country's social progress, economic stability, health, environment, law & order and food security. Pakistan is the sixth most populous country in the world with population is increased from 34.0 million in 1951 to 173.5 million in 2010 i.e. fifth-folded since independence. The inter-censal growth rate in population remains above 2% during this period. The country's high fertility rate is a major contributor to this situation since mortality rate has been fairly stable over the years.

Arresting population growth is one of the top priorities of the government of Pakistan since this will help in attaining a balance between country's resources and population, leading to sustainable socioeconomic development. The country is under heavy stress due to rapid growth in population and an immediate action is required to curb the increasing trend of population. The provision of quality contraceptive and its easy access help to reduce the Total Fertility Rate and to control the population. This report is consisting on the usage of contraceptives that are provided in the market from the government as well as private outlets.

The main objectives of the report are as following:

- To assess the province/sector-wise, methods-wise and outlets-wise contraceptives performance.
- To estimate annual contraceptives requirements and distribution in the country.
- To examine province/sector-wise, methods-wise and outlets-wise contraceptives growth during the current quarter.
- To calculate Contraceptive Prevalence Rate (CPR) to assess the birth control strategy of country

### Methodology

As past practice in the Ministry of Population Welfare, the Federal Bureau of Statistics collects the contraceptive performance data on monthly basis by post, through e-mail and by fax from the Provincial Population Welfare Departments (PPWDs); Population Welfare Departments AJK, GB, FATA; District Population Welfare Office, ICT, Islamabad; Family Planning Association of Pakistan (FPAP); Marie Stopes Society of Pakistan (NGO); Social Marketing of Contraceptive (SMC);

Regional Training Institutes (RTIs) and Public-private Partnership(PPP)/Target Groups Institutes(TGIs). After editing and coding, the data is classified according to tabulation plan and processed at Data Processing Centre of FBS.

The data is entered on monthly basis and after three months consolidated into the quarterly performance report. In the light of data, the percentage change in October – December, 2010 is compared with the corresponding quarter of last year as well as the previous quarter of the current year.

## **Concepts and Definitions**

In this report the following concepts and definitions have been used:

***Family Welfare Centre (FWC)***: The FWC is the cornerstone of Pakistan's Population Welfare Programme. They constitute the most extensive institutional network in the country for promoting and delivering family planning services in both urban and rural areas. As a static facility, it serves a population of about 7000; while operating through its satellites clinics and outreach facility, an FWC covers a population of about 12000.

***Reproductive Health Services-A Centers (RHS-A)***: The Reproductive Health Service Centers are the major clinical component of the Pakistan's Population Welfare Programme. They provide services through RHS-A Centers and RHS-B Centers. The RHS-A centers are hospital-based service delivery units. They provide contraceptive surgery facilities for women and men with safe and effective backup medical support.

***Reproductive Health Services-B Centers (RHS-B)***: Well-established hospitals and clinics with fully-equipped operating facilities (operation theatre facilities, beds for admission, post-operative care, sterilization and emergency resuscitation equipment, etc.) and trained work force.

***Mobile Service Units (MSUs)*** : The MSUs are the flagship of the Population Welfare Programme, they provide a package of quality Family Planning/Reproductive Health (FP/RH) services to the people of those remote villages and hamlets where no other health facilities exist. The MSUs operate from specially-designed vehicles which carry with in them all the facilities of a mini clinic ensuring complete privacy for simple gynecological procedures.

**Regional Training Institutes (RTIs)** : The RTIs provide skill-based training in FP/RH for all categories of health care providers: Doctors, medical students, nurses, students nurses, lady health visitors and other paramedics. The RTIs also undertake activities focused on raising the awareness level of hakims, homeopaths, community health workers, teachers and college students.

**Couple Years of Protection (CYP):** The term Couple Years of Protection (CYP) is one of several commonly used indicators to assess international family planning efforts. It is the protection provided by contraceptive methods during one-year period, based upon the volume of all contraceptives sold or distributed free of charge to clients during that period. It is also an indirect estimator of birth control.

CONVERSION FORMULA FOR CONTRACEPTIVE COUPLE YEARS OF PROTECTION (CYP)		
CONDOM	NO. OF UNITS / 144	= 1 CYP
ORAL PILL	NO. OF CYCLES / 15	= 1 CYP
IUD	NO. OF INSERTIONS x 3.5	= 1 CYP
INJECTABLE	NO. OF VIALS / 5	= 1 CYP
CONTRACEPTIVE SURGERY (CS)	NO. OF CASES x 12.5	= 1 CYP

## Data Sources

The Contraceptive Performance Report is prepared on the basis of data received from the following sources:

- Provincial Population Welfare Departments (PPWDs);
- Population Welfare Departments AJK, GB and FATA;
- The District Population Welfare Office, ICT, Islamabad
- Family Planning Association of Pakistan (FPAP) ;
- Marie Stopes Society of Pakistan (NGO);
- Social Marketing of Contraceptive (SMC);
- Regional Training Institutes (RTIs) and
- Public-private Partnership(PPP)/Target Groups Institutes(TGIs)

## **RESULTS AND DISCUSSION**

### **1. Province-wise Comparison in terms of Couple Years of Protection**

The province/sector-wise comparison of contraceptive performance during current quarter in terms of Couple Year of Protection (CYP) has been made with previous quarter (July-September 2010) of the same year and also with the same quarter of the previous year 2009 in Table-1.

At National level an increase of 17.1 % has been observed for all program and non-program outlets during the current quarter October-December 2010 as compared to previous quarter of the current year. However when compared with the same quarter of the previous year 2009 we see 1.4 % decrease.

At provincial level an increase for Punjab, Sindh, Khyber Pakhtunkhwa and Balochistan by 10.6%, 22.5% , 10.9% and 1.3% respectively has been observed during the current quarter as compared to the previous quarter of the current year. When compared with the same quarter of the previous year 2009 a decrease in three provinces namely, Punjab, Sindh, and Balochistan by 14.1%, 6.3% and 13.3% respectively, has been observed while a slight increase of 0.6 % has been seen in Khyber Pakhtunkhwa.

For Islamabad an increase of 4.9% has been recorded for October – December, 2010 over the previous quarter of 2010. Comparison of the current quarter with the corresponding quarter of 2009 depicts decrease by 7.0%.

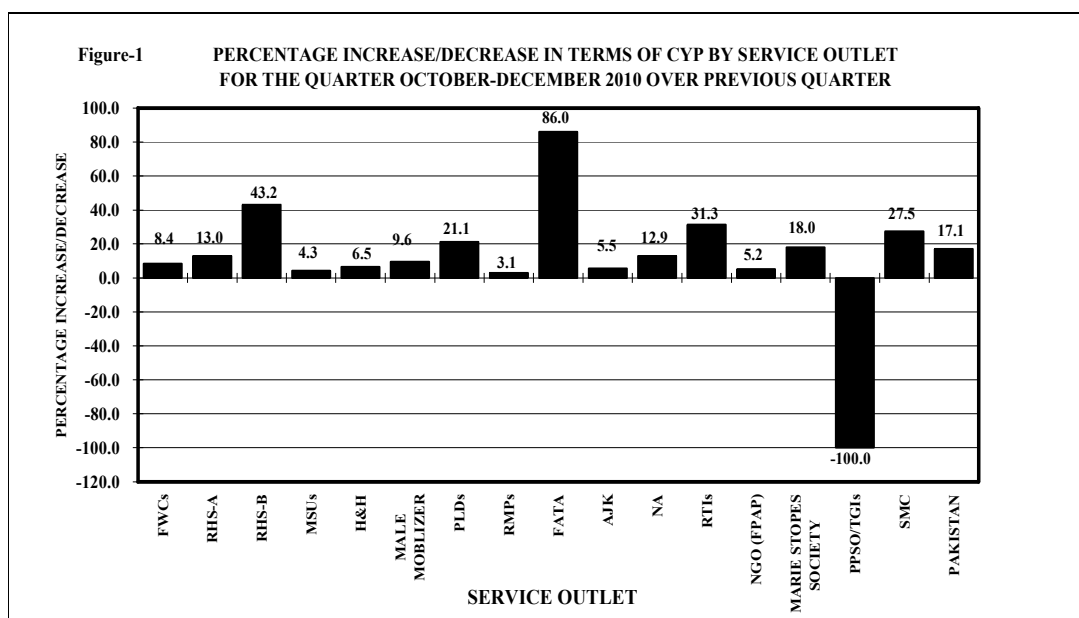
A substantial increase of 86% has been observed for FATA in the current quarter as compared to previous quarter of the current year. Similarly 84.1% increase was seen in the current quarter as compared to same quarter of the previous year.

Increase of 5.5% and 12.9% was recorded in current quarter with respect to previous quarter of the current year for AJK and Gilgit Baltistan respectively. However AJK showed a decline of 6.8 % in the current quarter as compared to same quarter of previous year while Gilgit Baltistan recorded increase of 17.3% in the current quarter when compared with the same quarter of previous year.

### **2. Outlets-wise Comparison in terms of Couple year of Protection**

The contribution of service outlets towards CYP during October – December, 2010 when compared with last quarter showed an increase of 8.4% in Family Welfare Centers (FWCs), 13.0% in Reproductive Health Services-A Centers (RHS-A), 43.2% in RHS-B,

4.3% in Mobile Service Units (MSUs), 21.1% in Hakeems and Homeopaths (H&H), 3.1% in Male Mobilizers (MM), 6.5% in Provincial Line Departments (PLDs), 9.6% in Registered Medical Practitioners (RMPs), , 31.3% in Regional Training Institutes (RTIs), 5.2% in Family Planning Association Of Pakistan (FPAP- a NGO), 18.0% in Marie Stopes (NGO) and 27.5% in Social Marketing of Contraceptives (SMC). The outlets-wise service delivery performance when compared with the corresponding period of 2009 showed an increase in RHS-B, H&H, PLDs, NGO(FPAP) and SMC by 47.2%, 21.1%, 8.0%, 84.1%,17.3%,29.5% and 6.8% respectively. Whereas FWCs, RHS-A, MSUs, MM, RMPs, and RTIs showed a decrease of 11.3%, 21.8% 28.3%, 38.5%, 8.0%, 6.8%,and 32.5% respectively. The details are given in Table-2.



### 3. Method-wise Comparison of Contraceptives Performance

In absolute terms, the Contraceptive Performance of Program and Non-Program service outlets reported a sale of 48.687 million units of Condoms, 1.346 million cycles of Oral Pills, 0.321 million insertions of Internal Urine Devices (IUDs), 0.783 million vials of Injectables. Also 39,005 numbers of Contraceptive Surgery Cases were performed during the current quarter.

The method-wise analysis, in term of CYP, compared with the previous quarter (July-September, 2010) showed an increase of 52.2% for Condoms, 10.4% for IUDs, 7.5% for

Injectables and 22.4% for Contraceptive Surgery cases, whereas decrease in Oral pills by 1.3%. Performance compared with the corresponding quarter of 2009 showed a minor increase in Condoms by 0.02% and in Injectables by 0.4%. A decreasing trend is observed in Oral Pill, IUD and Contraceptives Surgeries by 8.2% 1.3% and 1.9% respectively. The details are shown in Table-3.

#### **4. Province/Sector and Method-wise Comparison of Contraceptives Performance with previous quarter**

In case of condoms, the Province/Sector-wise and Method-wise performance of current quarter when compared with the previous quarter showed increase in Punjab by 15.9% , Sindh by 24.7% , KPK by 11.3%, Balochistan by 20.6%, Islamabad by 5.0%, FATA by 27.6% and AJK be 16.7%. Whereas a decrease in GB by 16.1% and in NGO(FPAP) by 9.6%. For Oral Pills an increase in Punjab by 3.1%, Sindh by 5.8% and Islamabad by 0.8% has been witnessed whereas decrease in KPK by 7.1% and in Balochistan by 4.3%. For IUDs we observed an increase in Punjab by 9.7%, Sindh by 9.5%, KPK by 12.4%, Balochistan by 5.2% and Islamabad by 2.2%. In case of Injectables an increase in Sindh by 3.9%, in KPK by 2.0% and Islamabad by 5.1% whereas decrease in Punjab by 3.6% and in Balochistan by 7.4% has been observed. When it comes to Contraceptives Surgery cases an increase in Punjab by 14.6%, in Sindh by 49.8% in KPK by 33.3% and Islamabad by 15.8% whereas decrease in Balochistan by 16.1% were witnessed. The details are reflected in Table-4.

#### **5. Outlets/Province/Sector-wise Comparison of Contraceptives Performance for Delivery Services with previous quarter**

The Outlets/ Province/Sector-wise Comparison of Performance of Contraceptives Delivery Services is depicting in table-5. The details are as under:

*(i) Family Welfare Centers (FWCs):* The performance of FWCs during the current quarter compared with the previous quarter in terms of CYP has been positive at national level by 8.4 %. At provincial levels, an increase is observed in Punjab by 8.0%, Sindh by 7.9%, Khyber Pakhtunkhwa by 10.0% , Balochistan by 4.1% and Islamabad 8.3%. In case of condoms, at national level, FWCs have shown an increase by 17.3% and for IUDs by 9.1% whereas a decrease is observed for Oral Pills and Injectables by 0.3% and 0.3% respectively.

**(ii) Reproductive Health Services Centers (RHS-A):** The performance of RHS-A centers during current quarter compared with the previous quarter in terms of CYP has been positive, at national level, by 13.0% and at provincial levels in Punjab by 2.5%, Sindh by 40.6%, Khyber Pakhtunkhwa by 18.1% and Islamabad by 11.4%, whereas a decrease has been observed in Balochistan by 4.2%. At national level, the performance of RHS-A centers has shown an increase for Condom by 19.2%, Oral Pills by 3.7%, IUDs by 20.3%, Injectables by 12.3% and Contraceptive Surgery by 11.3%.

**(iii) Reproductive Health Services Centres (RHS-B):** The performance of RHS-B centers of the current quarter compared with the previous quarter in terms of CYP has increased at national level by 43.2% and at provincial levels in Punjab by 36.2%, Sindh by 58.8% and Khyber Pakhtunkhwa by 86.6%, whereas a decrease is observed in Balochistan by 12.8%. At national level, the performance of RHS-B centers has shown an increase for IUDs 113.4% and Contraceptive Surgery by 42.5%, whereas a decrease is observed in Condom by 64.4%, Oral Pills by 80.4% and Injectables by 50.0%.

**(iv) Mobile Service Units (MSUs):** The performance of MSUs of the current quarter compared with the previous quarter in terms of CYP has increased at national level by 4.3% and at provincial levels in Sindh by 21.0%, Khyber Pakhtunkhwa by 4.5% and Balochistan by 1.2%, whereas a decrease is observed in Punjab by 2.1% and Islamabad by 100%. At national level, the performance of MSUs has shown an increase for Condom by 14.7% and IUDs by 4.7%, whereas decrease in Oral Pills by 2.3% and Injectables by 2.0%.

**(v) Provincial Line Departments (PLDs) including outlets of Health Department:** An increase has been reported in terms of CYP at national level by 21.1% and at Provincial level, for Punjab by 51.3%, Khyber Pakhtunkhwa by 446.7% Balochistan by 11.1% and Islamabad by 1.9% whereas a decrease in Sindh by 79.1%. In the method-wise analysis the performance has increased for Condoms by 79.1%, Oral Pills by 147.2%, in IUDs by 17.9% and Injectables by 8.0%.

**(vi) Registered Medical Practitioners (RMPs):** In terms of CYP, an increase has been observed in the performance of RMPs at national level by 3.1% and at provincial level in

Punjab by 11.5%, Sindh by 16.1% and Islamabad by 0.8%, whereas decline has been reported in Khyber Pakhtunkhwa by 46.2% and Balochistan by 18.6%. The method-wise performance of RMPs for the current quarter has shown an increase at national level for Condom by 18.3% Oral Pills 13.8% and IUDs by 2.7%, whereas a decrease in Injectables by 10.4.%

**(vii) Hakeems and Homoeopaths (H&H):** In terms of CYP, an increase has been observed in the performance of H&H at national level by 6.5% and at provincial level in Punjab by 15.5% and Khyber Pakhtunkhwa by 3.2%, whereas a decrease has been reported in Sindh by 14.0% and Balochistan by 3.0%. The method-wise performance of H&H for the current quarter has shown an increase at national level for Condom by 21.0% whereas a decrease in Oral Pills by 7.9%, IUDs and Injectables by 100% separately.

**(viii) Male Mobilizer:** In terms of CYP, an increase has been observed in the performance of Male Mobilizer at national level by 9.6% and at provincial level for Punjab by 8.7%, Sindh by 23.2%, Balochistan by 12.3% and Islamabad by 3.2% whereas a decrease has been reported in Khyber Pakhtunkhwa by 0.5%. The method-wise performance of Male Mobilizer for the current quarter has shown an increase at national level for Condom by 15.8%, whereas a decrease for Oral Pills by 1.3%

**(ix) Non-Governmental Organization (NGO)-FPAP:** The overall contraceptive performance has shown an increase by 5.2% in terms of CYP for NGO (FPAP) compared with the previous quarter, whereas the method-wise performance has shown an increase for Oral Pills by 11.4%, IUD by 9.6% and injectable by 17.9%. A decrease has been observed in Condoms by 9.6% and C.S.cases by 31.6% respectively.

**(x) Azad Jammu & Kashmir (AJK):** The contraceptive performance during the current quarter for AJK has been positive in terms of CYP by 5.5%. In the method-wise performance an increase has been observed for Condoms by 16.7%, IUDs by 7.9% and Injectables by 35.1% whereas a decrease has been reported for Oral Pills by 9.0% and C.S. cases by 14.5%.

**(xi) Gilgit – Baltistan (GB):** An increase of 12.9% has been reported in terms of CYP. In method-wise analysis the contraceptive performance for the current quarter of GB has



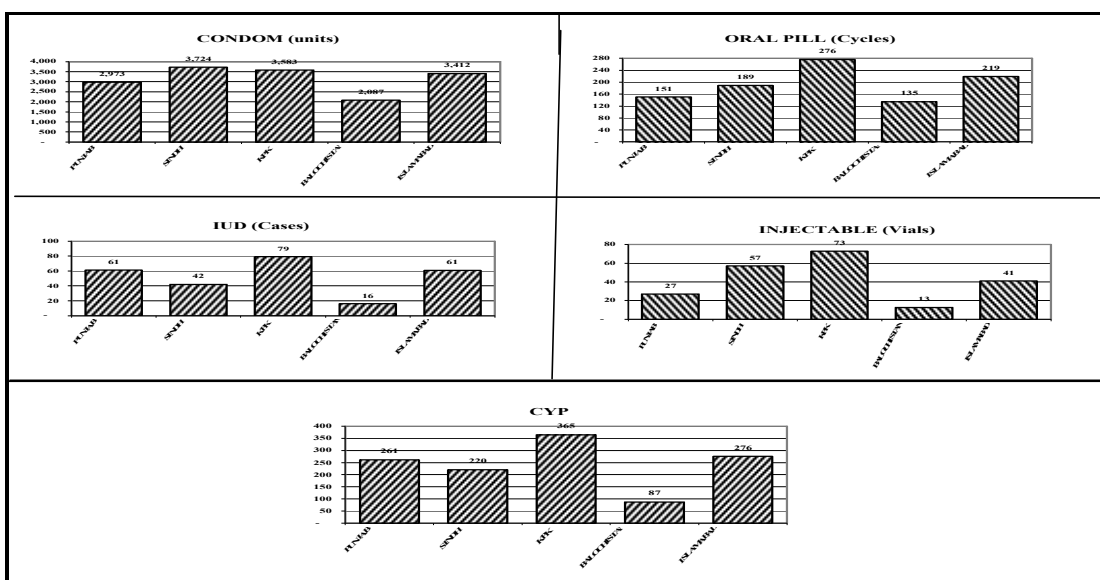
been positive for IUDs by 27.2% and Injectables by 1.4%, whereas a decrease has been reported for Condoms by 16.1% and Oral Pills by 0.9%.

## 6. Method and Outlets-wise Average Performance

Method and Outlets-wise Average performance for the Federal and Provincial setups during the Current Quarter is given in Table-6. The details are as under:

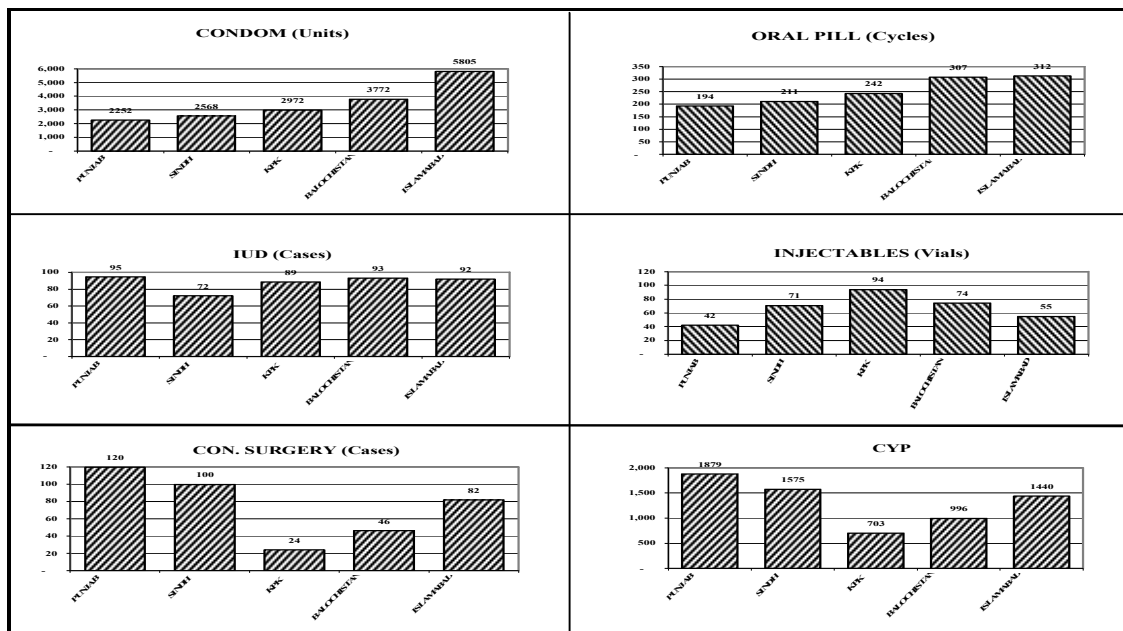
*(i) Average performance per FWC by method:* The highest average performance reported for Condoms per FWC is 3,724 units sold in Sindh followed by 3,583 in Khyber Pakhtunkhwa, in Islamabad 3,412, in Punjab 2,973 and 2,087 in Balochistan. The maximum numbers of 276 cycles of Oral Pills were dispensed by Khyber Pakhtunkhwa and the lowest 135 cycles were reported by FWCs of Balochistan. The highest insertions of IUDs i.e. 79 have been reported by FWCs of Khyber Pakhtunkhwa and the lowest figure reported is 16 by FWCs of Balochistan. When we look into the figure for injectables, it is seen that the maximum number has been reported by Khyber Pakhtunkhwa as 219 vials while the minimum number i.e. 38 has been observed in Balochistan. When these contraceptives performances are translated into CYP, it is observed that on average, the highest number of CYP i.e 365 has been reported by Khyber Pakhtunkhwa while the lowest 87 for Balochistan. The graphical presentation of each contraceptive method dispensed per FWC is presented below:

**Figure-2** Average Achievement Per FWC by Method and Province for the Quarter October - December, 2010



(ii) *Average performance per RHS-A by method:* The highest average achievement for Condoms per RHS-A is 5,805 units sold in Islamabad followed by 3,772 in Balochistan, 2,972 in Khyber Pakhtunkhwa, 2,568 in Sindh, and 2,252 in Punjab. The Reproductive Health Services-A Centres of Islamabad were able to dispense maximum number i.e 312 cycles of Oral Pills as compared to the lowest 194 cycles of Oral Pills by RHS-A of Punjab. The highest insertions of IUDs (95) were reported by Punjab in comparison to lowest 72 insertions carried out by RHS-As in Sindh. The highest Injectables i-e 282 vials were reported by Khyber Pakhtunkhwa in comparison to 126 vials reported by RHS-As of Punjab. The highest Contraceptive Surgery cases were performed by Punjab i-e 120 and the lowest i.e. 24 in Khyber Khyber Pakhtunkhwa. When the data of contraceptives performances is translated into CYP, it is observed that on average, the highest numbers of CYP have been calculated for Punjab i-e 1,879 while the lowest 703 appeared for Khyber Pakhtunkhwa. The graphical presentation of each contraceptive method recorded per RHS-A is presented below:

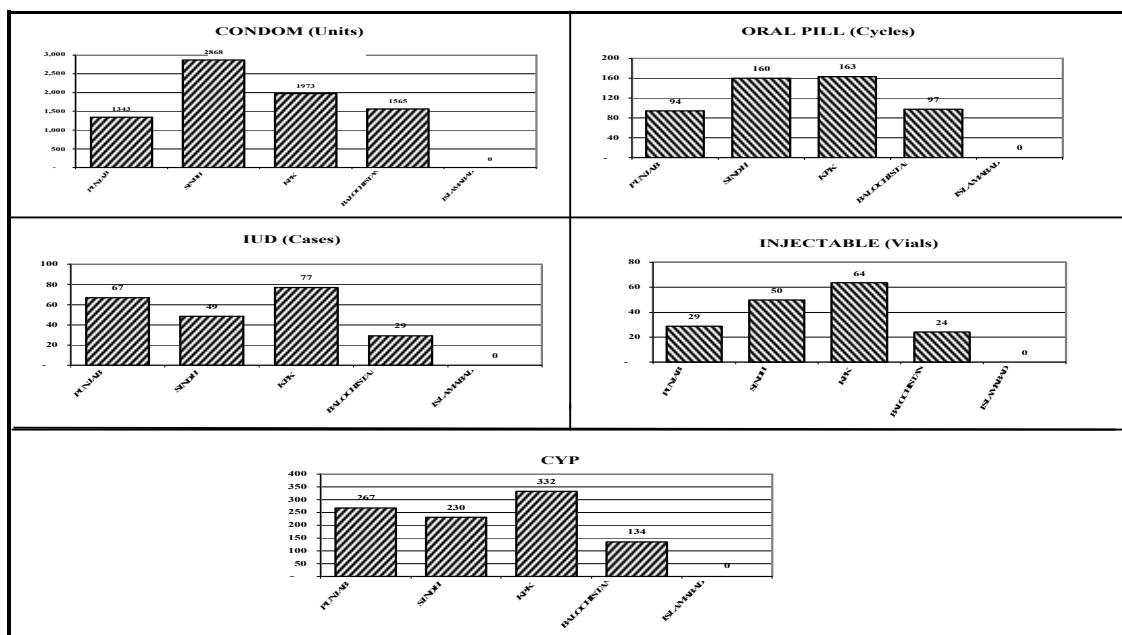
**Figure-3** Average Achievement Per RHS-A by Method and Province for the Quarter October - December, 2010



(iii) *Average performance per MSU by method:* The highest average reported performance for Condoms per MSU is 2,868 in Sindh followed by 1,973 in Khyber Pakhtunkhwa, 1,565 in Balochistan and 1,343 in Punjab respectively. The Mobile Service Units of Khyber Pakhtunkhwa were able to dispense 163 cycles of Oral Pills as compared to the lowest 94 cycles of Oral Pills in Punjab. The highest reported insertions of IUDs i-e 77

took place in KPK compared to the lowest 29 IUDs in Balochistan. The highest numbers of Injectables 191 vials reported by Khyber Pakhtunkhwa as compared to lowest 72 vials reported by MSUs of Balochistan. When the contraceptive performance data is translated into CYP, it is observed that on the average, the highest numbers of CYP i-e 332 were calculated for Khyber Pakhtunkhwa while the lowest were 134 for Balochistan. The graphical presentation of each contraceptive method as reported by MSUs is presented below:

**Figure-4** Average Achievement Per MSU by Method and Province for the Quarter October - December, 2010



**7. Percentage distribution of total CYP by Province/Sector during the current quarter**

The percentage distribution of total CYP by Province/Sector during the current quarter reflected 32.8% in Punjab, 13.0% in Sindh, 8.9% in Khyber Pakhtunkhwa, 1.3% in Balochistan, 1.1% in Islamabad, 0.4% in FATA, 0.3% in AJK and 0.1% in GB. The details are given in Table-7

**8. Percentage distribution of total CYP by Service Outlets during the current quarter (table-8)**

The percentage distribution of total CYP by Service outlets during the current quarter was 31.7% in FWCs, 11.0% in RHS-A, 7.5% in RHS-B, 2.8% in MSUs, 1.1% in PLDs, 1.1% in RMPs. The details are presented in the Table-8.

**9. Percentage distribution of Total CYP of Contraceptive Performance by Methods during the current quarter**

The method-wise percentage contribution for Condom, Oral Pills, IUD, Injectables and Contraceptive Surgery in terms of total CYP has been 15.4%, 4.1%, 51.2%, 7.1% and 22.2% respectively. The details are given in Table-9

**10. Province-wise Family Planning and Mother & Child Health (MCH) Services Delivery**

The data indicates that during the quarter 1,234,832 clients availed Family Planning Services of various Contraceptive methods out of which the Family Welfare Centers provided the services to 202,686 numbers of clients for Pre-natal and 191,753 for Post-natal Care. Apart from these, FW Centers had provided treatment to 1,012,509 General Ailments (Children + Adults). The details are given in Table-10.

## STATISTICAL TABLES

<b>TABLE-1</b>	PROVINCE/SECTOR- WISE PERFORMANCE DURING OCTOBER – DECEMBER, 2010 OVER THE PREVIOUS QUARTER AND CORRESPONDING QUARTER OF THE LAST YEAR
<b>TABLE-2</b>	OUTLETS/SECTOR-WISE PERFORMANCE DURING OCTOBER – DECEMBER, 2010 OVER THE PREVIOUS QUARTER AND CORRESPONDING QUARTER OF THE LAST YEAR.
<b>TABLE-3</b>	METHOD-WISE PERFORMANCE DURING OCTOBER – DECEMBER, 2010 OVER THE PREVIOUS QUARTER AND CORRESPONDING QUARTER OF THE LAST YEAR.
<b>TABLE-4</b>	PROVINCE/SECTOR AND METHOD-WISE PERFORMANCE OF CONTRACEPTIVES DELIVERY SERVICES FOR THE QUARTER OCTOBER – DECEMBER, 2010 OVER JULY – SEPTEMBER, 2010.
<b>TABLE-5</b>	OUTLETS/SECTOR-WISE PERFORMANCE OF CONTRACEPTIVES FOR THE PERIOD OCTOBER-DECEMBER, 2010 OVER JULY - DECEMBER, 2010.
<b>TABLE-6</b>	OUTLETS/SECTOR-WISE AVERAGE PERFORMANCE OF CONTRACEPTIVES FOR THE PERIOD OCTOBER-DECEMBER, 2010.
<b>TABLE-7</b>	PERCENTAGE DISTRIBUTION OF TOTAL CYP BY PROVINCE/SECTOR DURING OCT-DEC 2010.
<b>TABLE-8</b>	PERCENTAGE DISTRIBUTION OF TOTAL CYP BY SERVICE OUTLETS DURING OCT-DEC 2010.
<b>TABLE-9</b>	PERCENTAGE DISTRIBUTION OF TOTAL CYP BY METHODS DURING OCT-DEC 2010.
<b>TABLE-10</b>	PROVINCE-WISE FAMILY PLANNING AND MOTHER & CHILD HEALTH (MCH) SERVICES DELIVERY FOR THE PERIOD OCTOBER-DECEMBER 2010.



Table-1 PROVINCE/SECTOR WISE PERFORMANCE DURING OCTOBER-DECEMBER 2010 OVER THE PREVIOUS QUARTER AND CORRESPONDING QUARTER OF THE LAST YEAR

PROVINCE/SECTOR	COUPLE YEARS OF PROTECTION (CYP)			%age Change	
	Oct-Dec	Oct-Dec	July-Sep	Oct-Dec 2010/	Oct-Dec 2010/
	2010	2009	2010	Oct-Dec 2009	Jul-Sept. 2010
PUNJAB	719,830	837,756	650,757	-14.1	10.6
SINDH	285,019	304,299	232,577	-6.3	22.5
KHYBER PAKHTUNKHWA	196,244	195,005	176,998	0.6	10.9
BALUCHISTAN	29,008	33,457	28,644	-13.3	1.3
ISLAMABAD	23,158	24,912	22,077	-7.0	4.9
FATA	8,473	4,602	4,555	84.1	86.0
AJK	6,561	7,036	6,217	-6.8	5.5
GILGIT BALTISTAN (GB)	2,733	2,329	2,421	17.3	12.9
REGIONAL TRAINING INSTITUTES (RTIs)	2,266	3,355	1,726	-32.5	31.3
NON-GOVERNMENTAL ORGANIZATIONS (NGOs)	137,825	106,457	131,022	29.5	5.2
MARIE STOPES SOCIETY OF PAKISTAN	28,752	-	24,359	-	18.0
PUBLIC PRIVATE SECTOR ORGANIZATIONS (PPSO)	-	-	53	-	-
SOCIAL MARKETING OF CONTRACEPTIVES (SMC)	756,281	707,979	593,389	6.8	27.5
<b>PAKISTAN</b>	<b>2,196,149</b>	<b>2,227,187</b>	<b>1,874,796</b>	<b>-1.4</b>	<b>17.1</b>

Table-2 OUTLET/SECTOR WISE PERFORMANCE DURING OCTOBER-DECEMBER 2010 OVER THE PREVIOUS QUARTER AND CORRESPONDING QUARTER OF THE LAST YEAR

OUTLETS/SECTOR	COUPLE YEARS OF PROTECTION (CYP)			%age Change	
	Oct-Dec	Oct-Dec	July-Sep	Oct-Dec 2010/	Oct-Dec 2010/
	2010	2009	2010	Oct-Dec 2009	Jul-Sept. 2010
FAMILY WELFARE CENTRES (FWCs)	696714	785263	642950	-11.3	8.4
REPRODUCTIVE HEALTH SERVICES-A CENTRES (RHS-A)	241642	309154	213886	-21.8	13.0
REPRODUCTIVE HEALTH SERVICES-B CENTRES (RHS-B)	165572	112477	115606	47.2	43.2
MOBILE SERVICE UNITS (MSU)	61895	86339	59341	-28.3	4.3
HAKEEM & HOMOEOPATHS (H&H)	23103	19085	19080	21.1	21.1
MALE MOBLIZER (MM)	25037	40711	24291	-38.5	3.1
PROVINCIAL LINE DEPARTMENTS (PLDs)	1938	1794	1820	8.0	6.5
REGISTER MEDICAL PRACTITIONERS (RMPs)	37358	40604	34081	-8.0	9.6
FATA	8473	4602	4555	84.1	86.0
AJK	6561	7036	6217	-6.8	5.5
GILGIT BALTISTAN (GB)	2733	2329	2421	17.3	12.9
REGIONAL TRAINING INSTITUTES (RTIs)	2266	3355	1726	-32.5	31.3
NON-GOVERNMENTAL ORGANIZATIONS (NGOs)	137825	106457	131022	29.5	5.2
MARIE STOPES SOCIETY OF PAKISTAN	28752	0	24359	-	18.0
PUBLIC PRIVATE SECTOR ORGANIZATIONS (PPSO)	0	0	53	-	-
SOCIAL MARKETING OF CONTRACEPTIVES (SMC)	756281	707979	593389	6.8	27.5
<b>PAKISTAN</b>	<b>2196149</b>	<b>2227185</b>	<b>1874796</b>	<b>-1.4</b>	<b>17.1</b>

**Table-3 METHOD WISE PERFORMANCE DURING OCTOBER-DECEMBER 2010 OVER THE PREVIOUS QUARTER AND CORRESPONDING QUARTER OF THE LAST YEAR**

METHOD	OVERALL PERFORMANCE			%age Change	
	Oct-Dec 2010	Oct-Dec 2009	July-Sep 2010	Oct-Dec 2010/ Oct-Dec 2009	Oct-Dec 2010/ Jul-Sept. 2010
CONDOM (Units)	48687473	48677228	31995714		
CYP	338107	338036	222192	0.0	52.2
ORAL PILL (Cycles)	1345608	1465038	1363844		
CYP	89707	97669	90923	-8.2	-1.3
IUD (Insertions)	321176	325248	290795		
CYP	1124116	1138368	1017783	-1.3	10.4
INJECTABLE (Vials)	783281	779997	728490		
CYP	156656	155999	145698	0.4	7.5
CON. SURGERY (Cases)	39005	39769	31856		
CYP	487563	497113	398200	-1.9	22.4
<b>TOTAL CYP</b>	<b>2196149</b>	<b>2227185</b>	<b>1874796</b>	<b>-1.4</b>	<b>17.1</b>

**Table-4 PROVINCE/SECTOR AND METHOD WISE PERFORMANCE OF CONTRACEPTIVE DELIVERY SERVICES FOR THE PERIOD OCTOBER-DECEMBER, 2010 OVER JULY- SEPTEMBER, 2010**

PROVINCE/ SECTOR	CONDOM (Units)			ORAL PILL (Cycles)			IUD (Insertions)		
	OCT-DEC 2010	JULY-SEP 2010	% CHANGE	OCT-DEC 2010	JULY-SEP 2010	% CHANGE	OCT-DEC 2010	JULY-SEP 2010	% CHANGE
	2	3	4	5	6	7	8	9	10
PUNJAB	7,412,293	6,395,098	15.9	362,556	351,530	3.1	113,857	103,785	9.7
SINDH	3,308,347	2,653,874	24.7	195,309	184,557	5.8	32,895	30,054	9.5
KHYBER PAKHTUNKHWA	2,309,816	2,076,010	11.3	168,835	181,759	-7.1	38,363	34,129	12.4
BALUCHISTAN	616,780	511,353	20.6	41,733	43,598	-4.3	4,418	4,200	5.2
ISLAMABAD	181,169	172,585	5.0	10,307	10,223	0.8	4,228	4,137	2.2
FATA	57,472	45,033	27.6	5,475	5,742	-4.6	1,979	881	124.6
A.J.K.	66,428	56,901	16.7	3,782	4,155	-9.0	997	932	7.0
GILGIT BALTISTAN (GB)	9,968	11,877	-16.1	2,345	2,366	-0.9	416	327	27.2
RTIs	15,017	9,737	54.2	738	794	-7.1	553	386	43.3
NGO (FPAP)	171,639	189,947	-9.6	28,980	26,008	11.4	29,754	27,152	9.6
MARIE STOPES SOCIETY	12,428	10,233	21.5	2,346	1,807	29.8	8,061	6,829	18.0
PPSO/TGIs	0	2,244	-100.0	0	72	-100.0	0	7	-100.0
SMC	34,526,116	19,860,822	73.8	523,202	551,233	-5.1	85,655	77,976	9.8
<b>TOTAL</b>	<b>48,687,473</b>	<b>31,995,714</b>	<b>52.2</b>	<b>1,345,608</b>	<b>1,363,844</b>	<b>-1.3</b>	<b>321,176</b>	<b>290,795</b>	<b>10.4</b>

PROVINCE/ SECTOR	INJECTABLE (Vials)			CON. SURGERY (Cases)			COUPLE YEARS OF PROTECTION (CYP)		
	OCT-DEC 2010	JULY-SEP 2010	% CHANGE	OCT-DEC 2010	JULY-SEP 2010	% CHANGE	OCT-DEC 2010	JULY-SEP 2010	% CHANGE
	12	13	14	15	16	17	18	19	20
PUNJAB	160,991	167,071	-3.6	17,079	14,900	14.6	719,830	650,757	10.6
SINDH	123,396	118,712	3.9	8,737	5,833	49.8	285,019	232,577	22.5
KHYBER PAKHTUNKHWA	108,636	106,499	2.0	1,036	777	33.3	196,244	176,998	10.9
BALUCHISTAN	10,647	11,496	-7.4	348	415	-16.1	29,008	28,644	1.3
ISLAMABAD	10,074	9,589	5.1	352	304	15.8	23,158	22,077	4.9
FATA	3,912	3,882	0.8	0	0		8,473	4,555	86.0
A.J.K.	5,538	4,100	35.1	100	117	-14.5	6,561	6,217	5.5
GILGIT BALTISTAN (GB)	5,255	5,181	1.4	0	0	0.0	2,733	2,421	12.9
RTIs	885	1,272	-30.4	0	0	0.0	2,266	1,726	31.3
NGO (FPAP)	95,625	81,121	17.9	915	1,337	-31.6	137,825	131,022	5.2
MARIE STOPES SOCIETY	1,480	1,329	11.4	0	0		28,752	24,359	18.0
PPSO/TGIs	0	43	-100.0	0	0		0	53	-100.0
SMC	256,842	218,195	17.7	10,438	8,173	0.0	756,281	593,389	27.5
<b>TOTAL</b>	<b>783,281</b>	<b>728,490</b>	<b>7.5</b>	<b>39,005</b>	<b>31,856</b>	<b>22.4</b>	<b>2,196,149</b>	<b>1,874,796</b>	<b>17.1</b>





**Table-6 OUTLET WISE PERFORMANCE OF CONTRACEPTIVES FOR THE PERIOD OCTOBER-DECEMBER 2010**

Category of Service Outlets/Province/Sector	No. of Outlets	CONDOM (Units)		ORAL PILL (Cycles)		IUD (Insertions)		INJECTABLE (Vials)		CON SURGERY (Cases)		CYP	
		OCT-DEC 2010	Per Outlet	OCT-DEC 2010	Per Outlet	OCT-DEC 2010	Per Outlet	OCT-DEC 2010	Per Outlet	OCT-DEC 2010	Per Outlet	OCT-DEC 2010	Per Outlet
<b>FWCs</b>													
PUNJAB	1500	4458929	2973	226034	151	91792	61	122197	81	0	0	391745	261
SINDH	590	2197272	3724	111277	189	24780	42	100924	171	0	0	129592	220
KHYBER PAKHTUNKHWA	422	1511815	3583	116387	276	33460	79	92352	219	0	0	153838	365
BALUCHISTAN	155	323474	2087	20913	135	2493	16	5914	38	0	0	13549	87
ISLAMABAD	29	98955	3412	6355	219	1762	61	3561	123	0	0	7990	276
PAKISTAN	2696	8590445	3186	480966	178	154287	57	324948	121	0	0	696714	258
<b>RHS-A CENTRES</b>													
PUNJAB	74	166668	2252	14341	194	6997	95	9331	126	8847	120	139057	1879
SINDH	47	120695	2568	9914	211	3389	72	9942	212	4693	100	74011	1575
KHYBER PAKHTUNKHWA	26	77276	2972	6301	242	2301	89	7329	282	624	24	18276	703
BALUCHISTAN	6	22632	3772	1844	307	559	93	1335	223	278	46	5979	996
ISLAMABAD	3	17416	5805	937	312	275	92	493	164	246	82	4320	1440
PAKISTAN	156	404687	2594	33337	214	13521	87	28430	182	14688	94	241642	1549
<b>MSUs</b>													
PUNJAB	117	157174	1343	11021	94	7826	67	10107	86	0	0	31239	267
SINDH	70	200773	2868	11200	160	3399	49	10475	150	0	0	16132	230
KHYBER PAKHTUNKHWA	30	59190	1973	4903	163	2310	77	5732	191	0	0	9969	332
BALUCHISTAN	34	53205	1565	3311	97	992	29	2460	72	0	0	4554	134
ISLAMABAD	1	0	0	0	0	0	0	0	0	0	0	0	0
<b>PAKISTAN</b>	<b>252</b>	<b>470342</b>	<b>1866</b>	<b>30435</b>	<b>121</b>	<b>14527</b>	<b>58</b>	<b>28774</b>	<b>114</b>	<b>0</b>	<b>0</b>	<b>61895</b>	<b>246</b>

**Table-7 PERCENTAGE DISTRIBUTION OF TOTAL CYP BY PROVINCE/SECTOR OCTOBER TO DECEMBER 2010**

PROVINCE/SECTOR	CYP	% AGE
PUNJAB	719830	32.78
SINDH	285019	12.98
KHYBER PAKHTUNKHWA	196244	8.94
BALUCHISTAN	29008	1.32
ISLAMABAD	23158	1.05
FATA	8473	0.39
AJK	6561	0.30
G.B.	2733	0.12
RTIs	2266	0.10
NGO (FPAP)	137825	6.28
MARIE STOPES	28752	1.31
PPSO/TGIs	0	0.00
SMC	756281	34.44
<b>TOTAL</b>	<b>2196149</b>	<b>100.0</b>

**Table-8 PERCENTAGE DISTRIBUTION OF TOTAL CYP BY SERVICE OUTLET DURING OCTOBER TO DECEMBER 2010**

OUTLETS/SECTOR	CYP	% AGE
FWC	696714	31.72
RHS-A	241642	11.00
RHS-B	165572	7.54
MSU	61895	2.82
PLDs	23103	1.05
RMPs	25037	1.14
H&H	1938	0.09
MM	37358	1.70
FATA	8473	0.39
AJK	6561	0.30
G.B.	2733	0.12
RTIs	2266	0.10
NGO (FPAP)	137825	6.28
MARIE STOPES	28752	1.31
PPSO/TGIs	0	0.00
SMC	756281	34.44
<b>TOTAL</b>	<b>2196149</b>	<b>100.00</b>

**Table-9 PERCENTAGE DISTRIBUTION OF TOTAL CYP BY METHODS DURING OCTOBER TO DECEMBER 2010**

METHODS	CYP	%AGE
CONDOM (Units)	338107	15.40
ORAL PILL (Cycles)	89707	4.08
IUD (Insertions)	1124116	51.19
INJECTABLE (Vials)	156656	7.13
CON. SURGERY (Cases)	487563	22.20
<b>TOTAL</b>	<b>2196149</b>	<b>100.00</b>

**Table-10 PROVINCE WISE FAMILY PLANNING AND MCH SERVICES DELIVERY FOR THE PERIOD OCTOBER - DECEMBER 2010**

PROVINCE/ FEDERAL TERRITORY	F.P CLIENTS	MOTHER CARE (Number of Clients)			GENERAL AILMENTS (Number of patients)			MCH	ALL
		Pre-Natal	Post-Natal	Total	Children	Adults	Total	CLIENTS (Col 5+8)	CLIENTS (Col.2+5+8)
PUNJAB	471,831	44,873	25,590	70,463	66,394	233,759	300,153	370,616	842,447
SINDH	361,977	115,976	134,839	250,815	360,643	0	360,643	611,458	973,435
KHYBER PAKHTUNKHWA	304,734	23,535	17,065	40,600	58,687	143,533	202,220	242,820	547,554
BALUCHISTAN	36,981	4,420	3,731	8,151	5,963	39,270	45,233	53,384	90,365
ISLAMABAD	20,088	1,798	908	2,706	9,006	17,004	26,010	28,716	48,804
AJK	8,446	925	800	1,725	1,763	4,421	6,184	7,909	16,355
G.B.	5,899	1,345	1,536	2,881	5,559	16,121	21,680	24,561	30,460
FATA	24,876	9,814	7,284	17,098	18,604	31,782	50,386	67,484	92,360
<b>TOTAL</b>	<b>1,234,832</b>	<b>202,686</b>	<b>191,753</b>	<b>394,439</b>	<b>526,619</b>	<b>485,890</b>	<b>1,012,509</b>	<b>1,406,948</b>	<b>2,641,780</b>