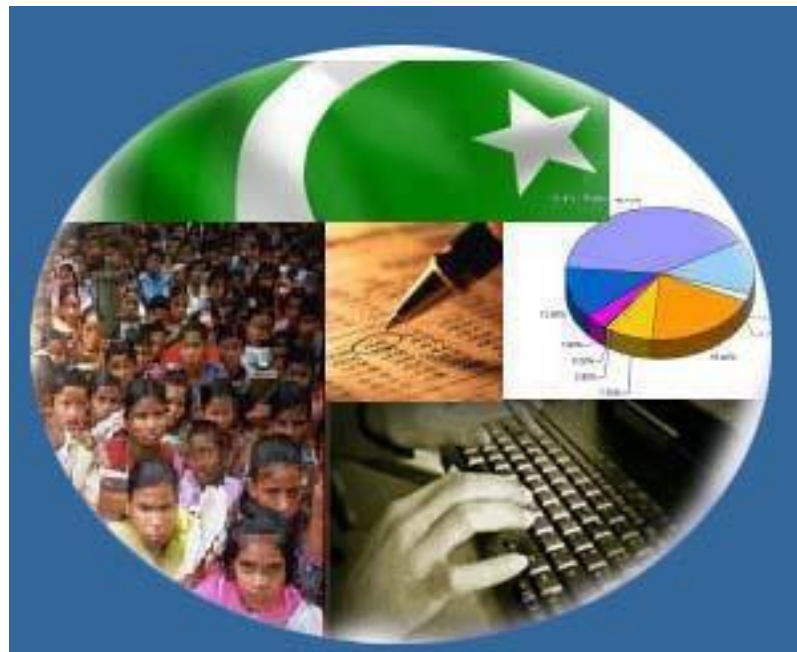




# Monthly Review on Price Indices



**May, 2019**  
**(Base 2007-08)**

**Government of Pakistan**  
**Ministry of Planning, Development and Reform**  
**Pakistan Bureau of Statistics**  
**Islamabad**



## Inflation in Brief

1. CPI inflation General increased by 9.1% on year-on-year basis in May, 2019 as compared to an increase of 8.8% in the previous month and 4.2% in May 2018. On month-on-month basis, it increased by 0.8% in May 2019 as compared to an increase of 1.3% in the previous month and an increase of 0.5% in corresponding month i.e. May 2018.
2. Core inflation measured by non-food non-energy CPI (Core NFNE) increased by 7.2% on (YoY) basis in May 2019 as compared to an increase of 7.0% in the previous month and 7.0% in May 2018. On (MoM) basis, it increased by 0.4% in May 2019 as compared to an increase of 1.0% in previous month, and an increase of 0.2% in corresponding month of last year i.e. May 2018.
3. Core inflation, measured by 20% weighted trimmed mean CPI (Core Trimmed) increased by 7.5% on (YoY) basis in May 2019 as compared to 7.2% in the previous month and by 5.1% in May 2018. On (MoM) basis, it increased by 0.4% in May 2019 as compared to an increase of 0.9% in the previous month and an increase of 0.3% in corresponding month of last year i.e. May 2018.
4. The CPI by Income Quintiles and Commodity Groups for May 2019 (MoM and YoY) is placed at **Annexure-C**.
5. SPI inflation on YoY basis increased by 10.8% in May 2019 as compared to an increase of 9.3% a month earlier and a decrease of 0.5% in May 2018. On MoM basis, it increased by 1.2% as compared to an increase of 0.9% in the previous month and an increase of 0.1% in corresponding month of last year i.e. May 2018.
6. WPI inflation on YoY basis increased by 14.0% in May 2019 as compared to an increase of 13.8% a month earlier and an increase of 5.6% in May 2018. WPI inflation on MoM basis increased by 1.4% in May 2019 as compared to an increase of 2.3% a month earlier and an increase of 1.3% in corresponding month of last year i.e. May 2018.
7. Figures 1 and 2 show graphically the data of Table1. Table1.1 shows "Period Average" and "YoY" percent changes in indices of three years.

Table 1: Inflation (%) (Base 2007-08)														
Period	CPI						Core Inflation				SPI**		WPI	
	General		Food		Non-food		NFNE*		Trimmed		YoY	MoM	YoY	MoM
	YoY	MoM	YoY	MoM	YoY	MoM	YoY	MoM	YoY	MoM				
Apr-18	3.7	1.8	-0.2	1.5	6.4	2.1	7.0	2.5	5.0	1.6	-0.5	0.4	4.0	1.3
May-18	4.2	0.5	1.0	1.0	6.4	0.2	7.0	0.2	5.1	0.3	0.5	0.1	5.6	1.3
Jun-18	5.2	0.6	3.0	0.8	6.7	0.4	7.1	0.3	5.4	0.2	1.9	1.8	7.6	1.5
Jul-18	5.8	0.9	3.5	0.6	7.4	1.2	7.6	1.2	5.9	0.9	3.6	1.2	10.5	2.4
Aug-18	5.8	0.2	3.3	0.2	7.6	0.2	7.7	0.2	5.9	0.2	3.3	0.2	11.0	0.8
Sep-18	5.1	-0.1	1.4	-0.7	7.7	0.3	8.0	0.4	5.8	0.1	1.0	-0.1	9.2	-1.5
Oct-18	6.8	2.3	2.7	1.9	9.6	2.6	8.2	1.1	6.7	0.8	1.3	1.1	13.1	4.2
Nov-18	6.5	0.1	1.8	-0.5	9.8	0.5	8.3	0.4	6.7	0.3	1.3	0.3	13.5	0.7
Dec-18	6.2	-0.4	0.9	-1.4	9.8	0.2	8.4	0.3	6.9	0.3	2.0	0.0	12.1	-0.9
Jan-19	7.2	1.0	2.4	0.3	10.5	1.4	8.7	1.1	7.7	1.0	3.7	0.6	9.9	-0.2
Feb-19	8.2	0.6	5.0	1.4	10.4	0.1	8.8	0.2	7.7	0.2	6.5	1.5	11.0	0.9
Mar-19	9.4	1.4	8.4	2.9	10.1	0.5	8.5	0.5	7.9	0.4	8.8	1.6	12.6	1.7
Apr-19	8.8	1.3	8.6	1.7	9.0	1.0	7.0	1.0	7.2	0.9	9.3	0.9	13.8	2.3
May-19	9.1	0.8	8.7	1.1	9.4	0.6	7.2	0.4	7.5	0.4	10.8	1.2	14.0	1.4

\*NFNE is non-food non-energy, \*\* SPI for quintile 1. Digits 0.0\* are due to rounding off.

Table 1.1: Period Average and YoY % Changes of Indices (Base 2007-08)						
Index	Average July- May % changes			May over May % changes		
	2018-19	2017-18	2016-17	2019	2018	2017
CPI	7.19	3.81	4.18	9.11	4.19	5.02
SPI	4.65	0.78	1.58	10.81	0.49	2.37
WPI	11.90	3.09	4.11	13.99	5.58	5.18

Figure 1: CPI Inflation YoY, Special Indices

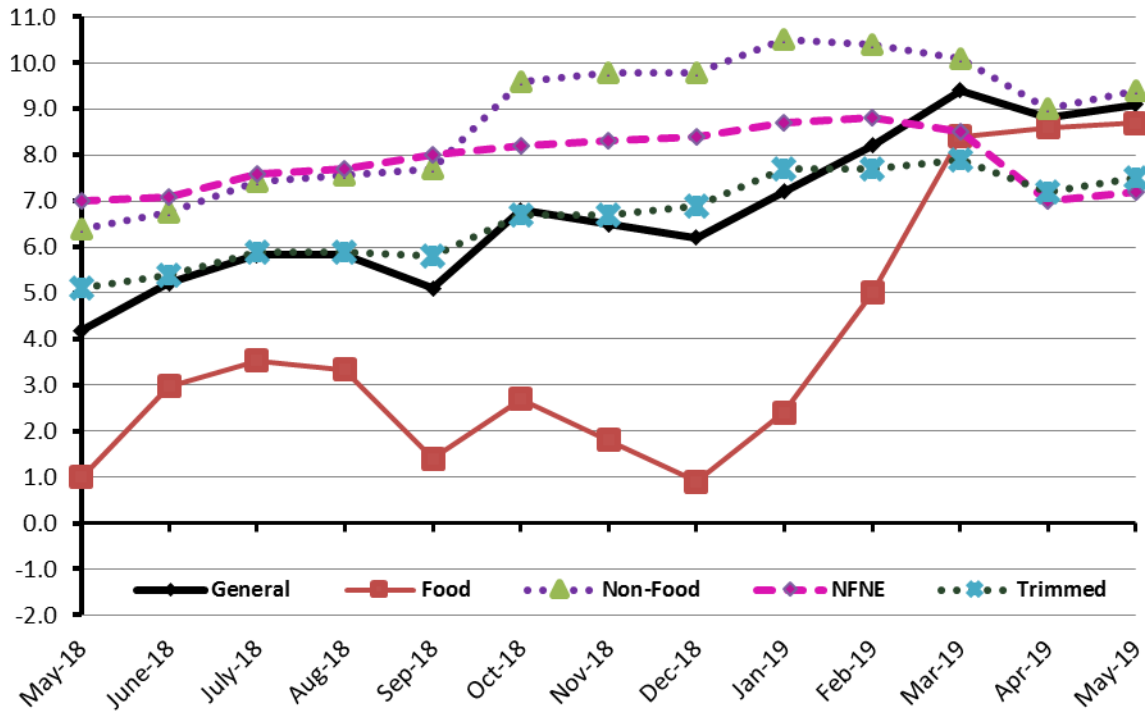
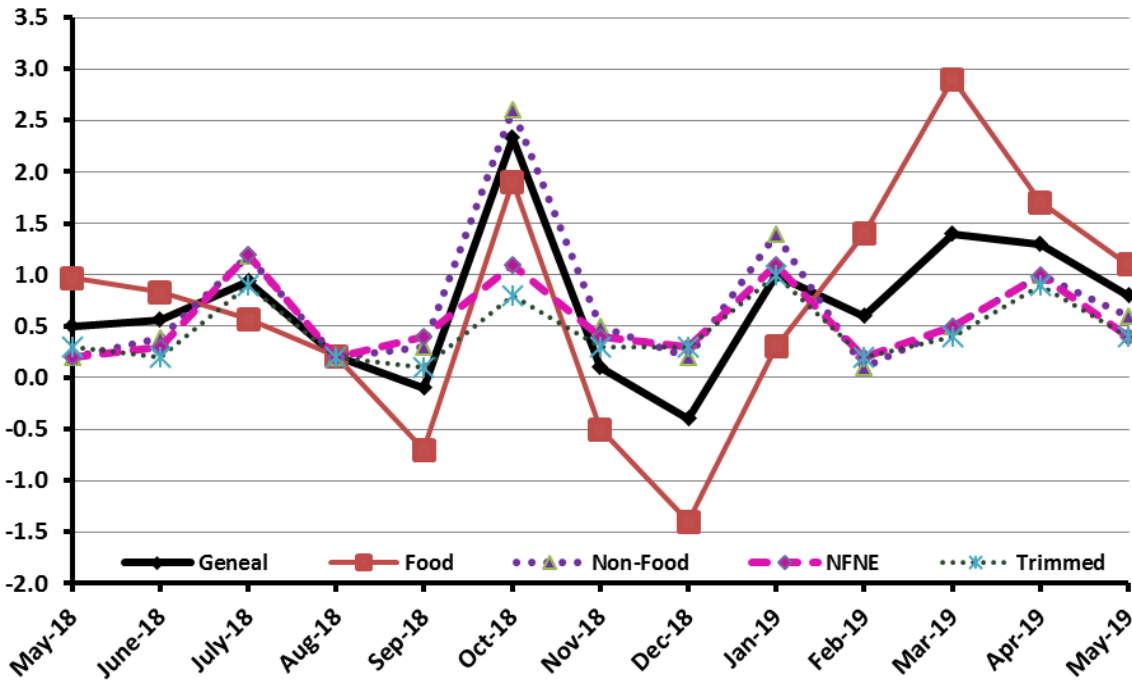


Figure 2: CPI Inflation MoM, Special Indices



## I. Consumer Price Index (CPI)

The Consumer Price Index of May 2019 is increased by 0.78% over April 2019 and increased by 9.11% over corresponding month of the last year i.e. May 2018.

**Table 2: Consumer Price Index by Group of Commodities and Services (Base 2007-08)**

No	Group	Group Weight (%)	Indices			% Change May 2019 Over		Impact (In % points) May 2019 Over	
			May 2019	April 2019	May 2018	April 2019	May 2018	April 2019	May 2018
	General	100.00	245.94	244.03	225.40	0.78	9.11	0.78	9.11
1.	Food & Non-alcoholic Beverages	34.83	254.52	251.63	234.40	1.15	8.58	0.41	3.11
	<i>Non-perishable Food Items</i>	29.84	247.94	247.05	233.97	0.36	5.97	0.11	1.85
	<i>Perishable Food Items</i>	4.99	293.83	278.99	236.97	5.32	23.99	0.30	1.26
2.	Alcoholic Bev. & Tobacco	1.41	357.39	356.07	315.26	0.37	13.36	0.01	0.26
3.	Clothing & Footwear	7.57	268.97	265.35	252.58	1.36	6.49	0.11	0.55
4.	Housing, Water, Electricity, Gas & Fuels	29.41	228.25	228.21	207.58	0.02	9.96	0.01	2.70
5.	Furnishing & Household Equipment Maint.	4.21	260.94	259.18	239.94	0.68	8.75	0.03	0.39
6.	Health	2.19	243.20	241.77	223.74	0.59	8.70	0.01	0.19
7.	Transport	7.20	220.70	214.61	189.17	2.84	16.67	0.18	1.01
8.	Communication	3.22	143.78	143.65	133.67	0.09	7.56	0.00	0.14
9.	Recreation & Culture	2.02	223.09	222.38	208.31	0.32	7.10	0.01	0.13
10.	Education	3.94	297.26	297.26	281.88	0.00	5.46	0.00	0.27
11.	Restaurants & Hotels	1.23	309.78	308.62	292.77	0.38	5.81	0.01	0.09
12.	Miscellaneous	2.76	285.38	284.45	263.91	0.33	8.14	0.01	0.26

Main contributors to month-on-month and year-on-year percentage changes are given below and detail is given in Annexure A.

### 1. Month-on-month Top few commodities which varied from previous month i.e. April 2019 are given below:

**Food Increased:** Onions (27.19%), Potatoes (25.8%), Fresh Fruits (9.03%), Pulse Mash (Washed) (5.93%), Pulse Moong (5.46%), Gur (4.13%), Sugar (3.44%), Betel Leaves & Nuts (3.15%), Beans (1.72%), Beverages (1.30%), SweetMeat (1.28%), Spices (%1.15) and Meat (1.00%).

**Decreased:** Tomatoes (32.86%), Chicken (5.33%), Gram Whole (1.30%), Fish (1.11%), Eggs (1.09%), Wheat (0.86%), Fresh Vegetables (0.58%) and Besan (0.2%).

**Non-food Increased:** Motor Fuel (6.00%), Kerosene Oil (3.72%), Cotton Cloth (2.5%), Dopatta (2.29%), Motor Vehicles (1.78%), Household Equipment (1.65%), Cosmetics (1.58%), Woolen Cloth (1.57%), Tailoring (1.56%) and Readymade Garments (1.02%).

**Decreased:** Personal Equipments (0.51%).

**Year-on-Year:** Top few commodities which varied from previous year i.e. May, 2018 are given below:-

**Food Increased:** Onions (77.53%), Tomatoes (46.10%), Pulse Moong (33.66%), Sugar (26.53%), Gur (23.00%), Fresh Vegetables (19.50%), Fresh Fruits (19.12%), Spices (17.19%), Honey (16.41%), Cigarettes (14.87%), Meat (12.80%), Beans (11.81%), Pulse Gram (11.43%), Pulse Mash (Washed) (10.38%), Dry Fruits (8.48%), Vegetable Ghee (7.79%), Cooking Oil (7.59%) and Wheat (7.40%).

**Decreased:** Betel Leaves & Nuts (22.42%), Eggs (10.52%), Chicken (8.14%) and Gram Whole (5.22%).

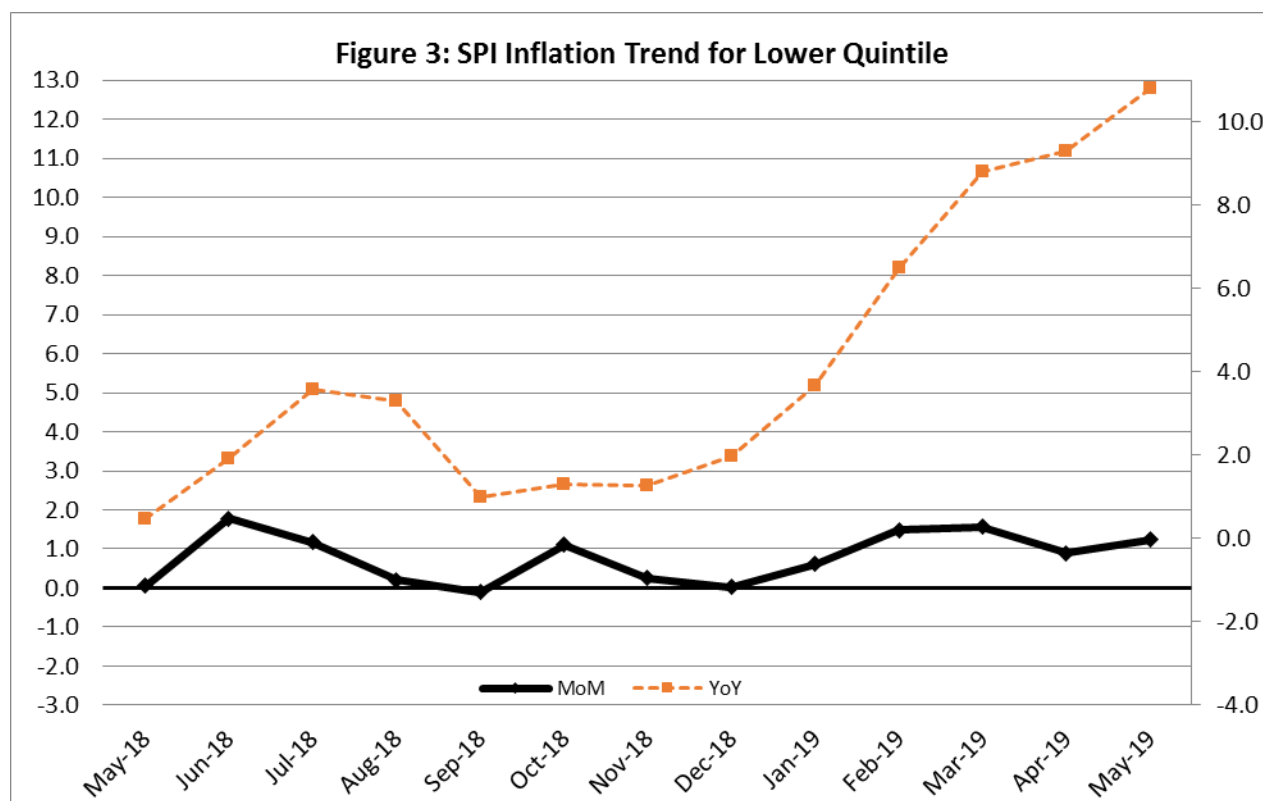
**Non-food Increased:** Gas (85.31%), Motor Fuel (24.76%), Newspapers (19.63%), Transport Services (13.30%), Motor Vehicles (12.67%), Kerosene Oil (11.78%), Utensils (11.09%), Plastic Products (11.00%), Motor Vehicle Accessories (10.99%), Personal Equipments (10.78%), Washing Soaps & Detergents (10.36%), Drugs & Medicines (10.35%), Cotton Cloth (10.35%) and Construction Input Items (10.15%).

## II. Sensitive Price Indicator

Quintile-wise percentage changes YoY and MoM are given below in Table 3. The series from May 2018 to May 2019 is also graphed below in Figure 3.

Table 3: Sensitive Price Indicator (Base 2007-08)					
Quintiles	Indices			% Change May, 2019 over	
	May, 2019	April, 2019	May, 2018	April, 2019	May, 2018
1	232.70	229.84	210.00	1.24	10.81
2	242.41	239.56	219.26	1.19	10.56
3	244.41	241.55	221.68	1.18	10.25
4	259.24	256.24	227.49	1.17	13.96
5	266.47	263.16	227.48	1.26	17.14
Combined	253.78	250.70	224.29	1.23	13.15

Table 3.1 : Weekly Percentage Change of SPI During May, 2019					
Quintiles	% Change with Previous week				
	02-05-2019	09-05-2019	16-05-2019	23-05-2019	30-05-2019
Quintile 1	-0.21	1.09	-0.33	0.38	0.25
Combined	-0.25	1.16	-0.32	0.33	0.28



## IV. Wholesale Price Index

The Wholesale Price Index for May, 2019 increased by 1.43% over April, 2019. It increased by 13.99% over the corresponding month of the last year. YoY and MoM movements, from May, 2018 to May, 2019 are also graphed below in Figure 4.

**Table 4: Wholesale Price Index by Group of Commodities (Base 2007-08)**

No.	Group	Group Weight (%)	Indices			% Change May, 2019 over		Impact (In %age points) May, 2019 over	
			May, 2019	April, 2019	May, 2018	April, 2019	May, 2018	April, 2019	May, 2018
	<b>General</b>	<b>100.00</b>	<b>263.29</b>	<b>259.57</b>	<b>230.98</b>	<b>1.43</b>	<b>13.99</b>	<b>1.43</b>	<b>13.99</b>
1.	Agriculture, Forestry & Fishery Products	25.77	294.65	287.68	263.65	2.42	11.76	0.69	3.46
2.	Ores & Minerals, Electricity, Gas & Water	12.04	290.68	290.77	242.99	-0.03	19.63	0.00	2.49
3.	Food Products, Beverages & Tobacco, Textiles, Apparel & Leather Products	31.11	268.16	265.89	235.86	0.85	13.69	0.27	4.35
	i. Food Products, Bev. & Tobacco	20.07	268.41	266.38	241.92	0.76	10.95	0.16	2.30
	ii. Textiles and Apparel	10.33	260.61	257.70	226.48	1.13	15.07	0.12	1.53
	iii. Leather Products	0.71	370.84	370.84	200.77	0.00	84.71	0.00	0.52
4.	Other Transportable Goods except Metal Products, Machinery & Equipment	22.37	232.38	227.00	198.63	2.37	16.99	0.46	3.27
5.	Metal Products, Machinery & Equipment	8.72	194.68	194.35	183.47	0.17	6.11	0.01	0.42

Main contributors to month-on-month and year-on-year percentage changes are given below and detail is given in Annexure B.

1. **Month-on-month** Top few commodities which varied from previous month i.e. April, 2019 are given below:-

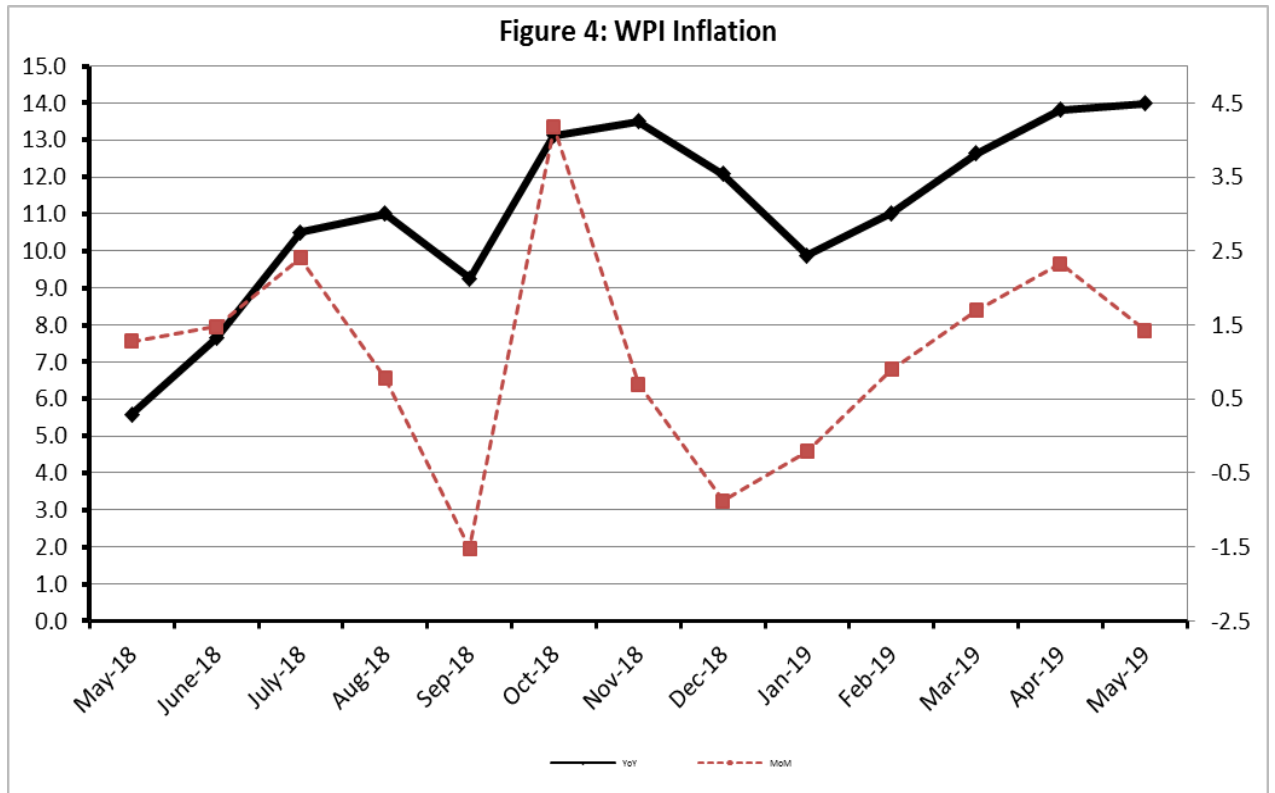
**Increased:** Potatoes (45.13%), Fresh Fruits (20.69%), Petrol (9.64%), Fish (8.70%), Kerosene Oil (8.35%), Diesel (5.99%), Vegetables & Fruit Juice (4.79%), Sugar (4.31%), Jowar (3.82%), Cotton Seeds (3.27%), Pesticides (2.69%), Fruit Juices (2.55%), Bajra (2.43%), Dairy Products (2.04%), Meat (1.90%), Cotton Yarn (1.85%), Dry Fruits & Maize (1.75%) each, Pulses (1.74%), Furnace Oil (1.68%), Mobil Oil (1.30%), Cotton Fabrics (1.29%), Rice (1.19%), Steel Bar & Sheets (1.13%) and Other Oil Seeds & Stimulant & Spice Crops (1.10%) each.

**Decreased:** Vegetables (10.07%), Poultry (3.88%), Eggs (3.42%) and Cement (1.30%).

2. **Year-on-year** Top few commodities which varied from previous year i.e. May, 2018 are given below:-

**Increased:** Other Leather N.E.C (218.26%), Jowar (59.01%), Natural Gas Liquefied (49.14%), Vegetables (39.13%), Sugar Crops (35.74%), Sugar (32.14%), Furnace Oil (27.45%), Bajra (26.39%), Diesel (25.02%), Spices (24.61%), Lathe Machine (24.12%), Tobacco Products (23.69%), Petrol (23.64%), Paints & Varnishes (22.63%), Cotton Yarn (22.39%), Stimulant & Spice Crops (21.84%), Kerosene Oil (21.37%), Motorcycle (19.91%), Fresh Fruits (19.60%), Fibre Crops (17.43%), Fertilizers (17.31%), Pipe Fittings (16.59%), Chemicals (16.22%), Auto Tyres (15.39%), Rice (15.18%) and Dried Fruits & Nuts (14.01%).

Decreased: Eggs (18.54%), Poultry (5.10%) and Electrical Energy (1.42%).





**Annexure – A: CPI by Commodity Groups and Commodities (2007-08=100)**

Item and Specification	Weight	Index Numbers			% Change in May 2019 over			
		May 2019	April 2019	May 2018	April 2019	May 2018		
<b><i>General</i></b>	<b>100.00</b>	<b>245.94</b>	<b>244.03</b>	<b>225.40</b>	+	<b>0.78</b>	+	<b>9.11</b>
<b><i>Food and non-alcoholic Beverages</i></b>	<b>34.834</b>	<b>254.52</b>	<b>251.63</b>	<b>234.40</b>	+	<b>1.15</b>	+	<b>8.58</b>
1 Wheat	0.3477	206.61	208.40	192.37	-	0.86	+	7.40
2 Wheat Flour	4.1648	217.25	215.66	206.09	+	0.74	+	5.42
3 Wheat Product	0.0959	216.71	215.88	212.42	+	0.38	+	2.02
4 Besan	0.1500	273.41	273.96	268.40	-	0.20	+	1.87
5 Rice	1.5821	204.99	203.89	194.33	+	0.54	+	5.49
6 Cereals	0.1563	272.73	271.41	264.30	+	0.49	+	3.19
7 Bakery & Confectionary	1.1550	235.10	234.69	225.94	+	0.17	+	4.05
8 Nimco	0.4574	264.45	264.08	259.43	+	0.14	+	1.94
9 Meat	2.4303	339.83	336.48	301.28	+	1.00	+	12.80
10 Chicken	1.3596	213.60	225.63	232.54	-	5.33	-	8.14
11 Fish	0.2970	244.13	246.88	228.10	-	1.11	+	7.03
12 Milk Fresh	6.6800	293.43	293.07	283.40	+	0.12	+	3.54
13 Milk Products	0.6338	287.09	286.28	275.28	+	0.28	+	4.29
14 Milk Powder	0.1129	259.46	259.07	243.79	+	0.15	+	6.43
15 Eggs	0.4555	169.95	171.82	189.94	-	1.09	-	10.52
16 Mustard Oil	0.0952	170.41	169.31	164.68	+	0.65	+	3.48
17 Cooking Oil	1.7538	151.39	151.17	140.71	+	0.15	+	7.59
18 Vegetable Ghee	2.0714	156.47	156.14	145.16	+	0.21	+	7.79
19 Dry Fruits	0.2543	313.89	311.07	289.34	+	0.91	+	8.48
20 Fresh Fruits	1.8649	355.63	326.18	298.56	+	9.03	+	19.12
21 Pulse Masoor	0.2712	167.55	166.91	158.06	+	0.38	+	6.00
22 Pulse Moong	0.2336	290.70	275.65	217.50	+	5.46	+	33.66
23 Pulse Mash (Washed)	0.2098	233.03	219.98	211.12	+	5.93	+	10.38
24 Pulse Gram	0.2361	285.07	282.30	255.84	+	0.98	+	11.43
25 Gram Whole	0.1616	259.79	263.21	274.09	-	1.30	-	5.22
26 Beans	0.0269	273.13	268.50	244.28	+	1.72	+	11.81
27 Potatoes	0.4452	180.34	143.36	174.73	+	25.8	+	3.21
28 Onion	0.5093	315.54	248.09	177.74	+	27.1	+	<u>77.53</u>
29 Tomatoes	0.4172	159.18	237.08	108.95	-	32.8	+	46.10
30 Fresh Vegetables	1.7543	286.39	288.05	239.66	-	0.58	+	19.50
31 Sugar	1.0445	240.83	232.83	190.33	+	3.44	+	26.53
32 Gur	0.0220	299.59	287.70	243.56	+	4.13	+	23.00
33 Honey	0.0446	403.00	399.03	346.18	+	0.99	+	16.41
34 Sweet Meat	0.2483	283.12	279.53	270.67	+	1.28	+	4.60
35 Beverages	1.1990	239.05	235.98	231.59	+	1.30	+	3.22
36 Jam, Tomato Ketchup & Pickles	0.2454	243.64	241.85	230.45	+	0.74	+	5.72
37 Condiments	0.2656	300.66	299.50	284.34	+	0.39	+	5.74
38 Spices	0.5441	289.38	286.08	246.93	+	1.15	+	17.19
39 Tea	0.8377	321.62	320.98	302.62	+	0.20	+	6.28
<b><i>Alcoholic Beverages, Tobacco</i></b>	<b>1.4135</b>	<b>357.39</b>	<b>356.08</b>	<b>315.26</b>	+	<b>0.37</b>	+	<b>13.36</b>
40 Cigarettes	1.3906	353.23	352.20	307.50	+	0.29	+	14.87
41 Betel Leaves & Nuts	0.0229	610.05	591.41	786.31	+	3.15	-	22.42
<b><i>Clothing and footwear</i></b>	<b>7.5708</b>	<b>268.98</b>	<b>265.36</b>	<b>252.58</b>	+	<b>1.36</b>	+	<b>6.49</b>
42 Cotton Cloth	1.7286	270.34	263.74	244.99	+	2.50	+	10.35
43 Woolen Cloth	0.8759	285.01	280.61	268.37	+	1.57	+	6.20
44 Readymade Garments	0.9739	275.68	272.89	262.95	+	1.02	+	4.84
45 Woolen Readymade Garments	0.3964	289.77	289.31	266.50	+	0.16	+	8.73
46 Hosiery	0.5094	281.08	279.59	265.27	+	0.53	+	5.96

## Annexure A: CPI by Commodity Groups and Commodities (2007-08=100)

Item and Specification	Weight	Index Numbers			% Change in May 2019 over	
		May 2019	April 2019	May 2018	April 2019	May 2018
47 Dopatta	0.4412	281.95	275.65	261.94	+ 2.29	+ 7.64
48 Cleaning and Laundry	0.2110	307.61	305.07	290.46	+ 0.83	+ 5.90
49 Tailoring	0.8840	364.75	359.16	344.90	+ 1.56	+ 5.76
50 Footwear	1.5504	181.34	181.19	177.43	+ 0.08	+ 2.20
<b><u>Housing, water, Elec., Gas and other</u></b>	<b>29.4149</b>	<b>228.25</b>	<b>228.21</b>	<b>207.58</b>	<b>+ 0.02</b>	<b>+ 9.96</b>
51 House Rent	21.8149	214.78	214.78	201.96	+ 0.00	+ 6.35
52 Construction Input Items	0.5623	298.32	296.83	270.82	+ 0.50	+ 10.15
53 Construction Wage Rates	0.3331	282.74	282.22	264.70	+ 0.18	+ 6.82
54 Water Supply	0.4971	195.29	195.29	189.09	+ 0.00	+ 3.28
55 Electricity	4.3985	258.28	258.28	238.10	+ 0.00	+ 8.48
56 Gas	1.5756	292.94	292.94	158.08	+ 0.00	+ <u>85.31</u>
57 Kerosene Oil	0.0057	295.47	284.86	264.32	+ 3.72	+ 11.78
58 Firewood Whole	0.2277	308.96	307.99	297.93	+ 0.31	+ 3.70
<b><u>Furnishing and household equip-</u></b>	<b>4.2082</b>	<b>260.95</b>	<b>259.19</b>	<b>239.94</b>	<b>+ 0.68</b>	<b>+ 8.76</b>
59 Furniture	0.3315	256.83	255.11	235.84	+ 0.67	+ 8.90
60 Household Textiles	0.6489	255.72	253.98	243.30	+ 0.69	+ 5.10
61 Household Equipment	0.5936	205.33	202.00	189.68	+ 1.65	+ 8.25
62 Utensils	0.3212	277.60	275.24	249.89	+ 0.86	+ 11.09
63 Plastic Products	0.2547	250.05	248.20	225.28	+ 0.75	+ 11.00
64 Washing Soaps & Detergents	0.7893	264.00	263.63	239.22	+ 0.14	+ 10.36
65 Sewing Needle & Dr Cell	0.1496	232.84	232.24	219.11	+ 0.26	+ 6.27
66 Household Servant	1.0432	295.04	292.98	270.32	+ 0.70	+ 9.14
67 Marriage Hall Charges	0.0762	279.97	279.97	260.28	+ 0.00	+ 7.56
<b><u>Health</u></b>	<b>2.1868</b>	<b>243.18</b>	<b>241.75</b>	<b>223.74</b>	<b>+ 0.59</b>	<b>+ 8.69</b>
68 Drugs & Medicines	1.2667	208.87	206.92	189.28	+ 0.94	+ 10.35
69 Medical Equipments	0.0080	283.11	281.94	259.89	+ 0.41	+ 8.93
70 Doctor (MBBS) Clinic Fee	0.5904	324.35	324.35	302.67	+ 0.00	+ 7.16
71 Medical Tests	0.3217	228.31	226.33	213.70	+ 0.87	+ 6.84
<b><u>Transport</u></b>	<b>7.2023</b>	<b>220.70</b>	<b>214.61</b>	<b>189.16</b>	<b>+ 2.84</b>	<b>+ 16.67</b>
72 Motor Vehicles	0.6630	211.31	207.61	187.54	+ 1.78	+ 12.67
73 Motor Vehicle Accessories	0.2439	240.79	239.38	216.95	+ 0.59	+ 10.99
74 Motor Fuel	3.0269	209.23	197.39	167.71	+ 6.00	+ 24.76
75 Mechanical Service	0.4552	258.15	256.98	242.09	+ 0.46	+ 6.63
76 Motor Vehicle Tax	0.1099	211.97	211.97	210.18	+ 0.00	+ 0.85
77 Transport Services	2.7034	228.09	226.34	201.31	+ 0.77	+ 13.30
<b><u>Communication</u></b>	<b>3.2198</b>	<b>143.78</b>	<b>143.65</b>	<b>133.67</b>	<b>+ 0.09</b>	<b>+ 7.56</b>
78 Postal Services	0.0662	272.63	272.63	272.18	+ 0.00	+ 0.17
79 Communication & Apparatus	3.1536	141.07	140.94	130.77	+ 0.09	+ 7.88
<b><u>Recreation and culture</u></b>	<b>2.0227</b>	<b>223.08</b>	<b>222.37</b>	<b>208.32</b>	<b>+ 0.32</b>	<b>+ 7.09</b>
80 Recreation & Culture	0.8634	138.17	138.16	134.12	+ 0.01	+ 3.02
81 Text Books	0.5706	322.93	321.86	304.43	+ 0.33	+ 6.08
82 Newspapers	0.1934	242.78	242.78	202.94	+ 0.00	+ 19.63
83 Stationery	0.3953	254.76	252.72	234.29	+ 0.81	+ 8.74
<b><u>Education</u></b>	<b>3.9431</b>	<b>297.27</b>	<b>297.27</b>	<b>281.88</b>	<b>+ 0.00</b>	<b>+ 5.46</b>
84 Education	3.9431	297.27	297.27	281.88	+ 0.00	+ 5.46
<b><u>Restaurants and hotels</u></b>	<b>1.2286</b>	<b>309.79</b>	<b>308.62</b>	<b>292.77</b>	<b>+ 0.38</b>	<b>+ 5.81</b>
85 Readymade Food	1.2286	309.79	308.62	292.77	+ 0.38	+ 5.81
<b><u>Misc. goods and services</u></b>	<b>2.7550</b>	<b>285.37</b>	<b>284.46</b>	<b>263.91</b>	<b>+ 0.32</b>	<b>+ 8.13</b>
86 Personal Care	1.4935	252.77	251.10	238.37	+ 0.67	+ 6.04
87 Cosmetics	0.3853	241.15	237.40	223.29	+ 1.58	+ 8.00
88 Blades	0.0322	226.31	221.15	204.05	+ 2.33	+ 10.91
89 Personal Equipments	0.8440	365.51	367.39	329.93	- 0.51	+ 10.78

## Annexure B: Wholesale Price Indices by Major Groups &amp; Commodities

(2007-08=100)

Item and Specification	Weight	Index Numbers			% Change in May 2019 over	
		May 19	April 19	May 18	April 2019	May 2018
<b>General</b>	<b>100.0000</b>	<b>263.29</b>	<b>259.57</b>	<b>230.98</b>	<b>+ 1.43</b>	<b>+ 13.99</b>
<b>Agriculture Forestry &amp; Fisher</b>	<b>25.7674</b>	<b>294.65</b>	<b>287.68</b>	<b>263.65</b>	<b>+ 2.42</b>	<b>+ 11.76</b>
001 Wheat	0.6297	212.97	211.18	193.89	+ 0.85	+ 9.84
002 Maize	0.6764	250.97	246.66	220.29	+ 1.75	+ 13.93
003 Rice	2.4413	206.06	203.63	178.91	+ 1.19	+ 15.18
004 Sorghum / Jowar	0.0214	465.05	447.93	292.47	+ 3.82	+ 59.01
005 Millet / Bajra	0.0374	266.63	260.31	210.95	+ 2.43	+ 26.39
006 Vegetables	1.2441	320.49	356.37	230.36	- 10.07	+ 39.13
007 Fresh Fruits	1.5144	428.74	355.25	358.47	+ 20.69	+ 19.60
008 Dry Fruits	0.2478	287.30	282.36	283.68	+ 1.75	+ 1.28
009 Cotton Seeds	1.1511	281.20	272.29	273.24	+ 3.27	+ 2.91
010 Other Oil Seeds	0.0722	189.46	187.39	186.14	+ 1.10	+ 1.78
011 Edible Roots / Potatoes	0.2540	184.30	126.99	161.85	+ 45.13	+ 13.87
012 Stimulant & Spice Crops	0.1634	344.50	340.75	282.74	+ 1.10	+ 21.84
013 Pulses	0.4901	254.02	249.67	239.75	+ 1.74	+ 5.95
014 Sugar Crops	1.0725	349.69	349.69	257.62	+ 0.00	+ 35.74
015 Fibre Crops	5.3169	280.99	278.87	239.28	+ 0.76	+ 17.43
016 Unmanufactured Tobacco	0.0742	326.11	325.04	309.16	+ 0.33	+ 5.48
017 Poultry	0.5633	236.49	246.03	249.20	- 3.88	- 5.10
018 Raw Milk from Bovine Animals	7.0279	290.78	290.78	283.49	+ 0.00	+ 2.57
019 Eggs	0.5034	158.30	163.90	194.33	- 3.42	- 18.54
020 Raw Animal Materials / Wool	0.0351	190.05	190.05	176.72	+ 0.00	+ 7.54
021 Hides & Fur Skins, Raw	0.4834	93.37	92.86	94.24	+ 0.55	- 0.92
022 Fuel Wood in Logs	0.0179	296.01	293.83	283.56	+ 0.74	+ 4.39
023 Fish Live Fresh or Chilled	1.7295	505.63	465.14	451.10	+ 8.70	+ 12.09
<b>Ores/Minerals, Elec., Gas &amp; W</b>	<b>12.0389</b>	<b>290.68</b>	<b>290.77</b>	<b>242.99</b>	<b>- 0.03</b>	<b>+ 19.63</b>
024 Coal not Agglomerated	0.7508	155.29	155.29	155.29	+ 0.00	+ 0.00
025 Natural Gas Liquefied	5.7385	314.87	315.07	211.12	- 0.06	+ 49.14
026 Salt & Pure Sodium Chloride	0.0584	290.99	290.99	269.74	+ 0.00	+ 7.88
027 Electrical Energy	5.4912	283.90	283.90	288.00	+ 0.00	- 1.42
<b>Food, Beverages, Tobacco, Textil</b>	<b>31.1122</b>	<b>268.16</b>	<b>265.89</b>	<b>235.86</b>	<b>+ 0.85</b>	<b>+ 13.69</b>
<b>Food Products, Beverages &amp;</b>	<b>20.0718</b>	<b>268.41</b>	<b>266.38</b>	<b>241.92</b>	<b>+ 0.76</b>	<b>+ 10.95</b>
028 Meat of Animals	3.4559	360.72	353.98	325.47	+ 1.90	+ 10.83
029 Vegetables & Fruit Juice	0.0058	242.67	231.57	226.66	+ 4.79	+ 7.06
030 Dried Fruits & Nuts	0.1733	336.68	333.48	295.32	+ 0.96	+ 14.01
031 Fruit Juices	0.3880	196.95	192.06	185.23	+ 2.55	+ 6.33
032 Vegetable Oils Refined	1.9242	168.00	168.32	158.97	- 0.19	+ 5.68
033 Vegetable Ghee	1.5632	139.59	139.82	129.83	- 0.16	+ 7.52
034 Oil Cakes	0.9611	251.81	250.04	232.12	+ 0.71	+ 8.48
035 Processed Liquid Milk	4.4437	308.71	311.00	289.45	- 0.74	+ 6.65
036 Milk & Cream in Solid Form	0.0316	242.85	242.85	223.82	+ 0.00	+ 8.50
037 Ice Cream	0.0047	287.85	287.85	266.02	+ 0.00	+ 8.21
038 Dairy Products N.E.C	0.0117	304.88	298.79	278.71	+ 2.04	+ 9.39
039 Wheat Flour	2.3034	197.89	196.69	188.12	+ 0.61	+ 5.19
040 Other Cereal Flour	0.0604	230.34	230.69	215.85	- 0.15	+ 6.71
041 Sugar Refined	1.7975	259.51	248.79	196.39	+ 4.31	+ 32.14
042 Chocolate	0.0139	100.00	100.00	100.00	+ 0.00	+ 0.00
043 Sugar Confectionary	0.0738	128.15	128.15	127.55	+ 0.00	+ 0.47
044 Coffee & Tea	0.7303	292.34	289.70	274.13	+ 0.91	+ 6.64
045 Spices	0.1449	252.03	251.98	202.25	+ 0.02	+ 24.61
046 Other Food Products	0.0336	320.27	319.77	294.50	+ 0.16	+ 8.75
047 Mineral Water	0.0207	217.45	216.02	211.50	+ 0.66	+ 2.81
048 Beverages	0.6303	178.58	178.18	173.22	+ 0.22	+ 3.09
049 Tobacco Products	1.2998	393.80	393.80	318.37	+ 0.00	+ 23.69
<b>Textiles &amp; Apparels</b>	<b>10.3289</b>	<b>260.61</b>	<b>257.70</b>	<b>226.48</b>	<b>+ 1.13</b>	<b>+ 15.07</b>
050 Cotton Yarn	5.2491	288.89	283.63	236.05	+ 1.85	+ 22.39
051 Nylon Yarn	0.1719	143.99	143.99	143.99	+ 0.00	+ 0.00
052 Blended Yarn	0.1689	207.84	207.37	195.38	+ 0.23	+ 6.38
053 Woven Fabrics	0.0128	344.94	344.94	321.49	+ 0.00	+ 7.29
054 Cotton Fabrics	0.6343	229.16	226.25	219.99	+ 1.29	+ 4.17
055 Other Fabrics	1.1016	235.88	235.88	227.85	+ 0.00	+ 3.52
056 Silk & Reyon Fabrics	0.7350	195.54	194.81	188.95	+ 0.37	+ 3.49
057 Towels	0.1235	308.50	308.50	287.65	+ 0.00	+ 7.25

## Annexure B: Wholesale Price Indices by Major Groups &amp; Commodities

(2007-08=100)

Item and Specification	Weight	Index Numbers			% Change in May 2019 over	
		May 19	April 19	May 18	April 2019	May 2018
058 Blankets	0.0029	277.52	277.52	265.03	+ 0.00	+ 4.71
059 Bed Sheets	0.0913	269.00	269.00	256.87	+ 0.00	+ 4.72
060 Quilts	0.0019	232.74	232.74	222.32	+ 0.00	+ 4.69
061 Woolen Carpets	0.0383	199.40	199.40	196.43	+ 0.00	+ 1.51
062 Synthetic Carpets	0.0566	134.75	134.75	130.95	+ 0.00	+ 2.90
063 Hosiery Products	0.8832	273.87	273.87	250.36	+ 0.00	+ 9.39
064 Readymade Garments	1.0576	228.07	228.07	201.16	+ 0.00	+ 13.38
<b>Leather Products</b>	<b>0.7115</b>	<b>370.84</b>	<b>370.84</b>	<b>200.77</b>	+ <b>0.00</b>	+ <b>84.71</b>
065 Leather Without Hair	0.2973	229.55	229.55	212.68	+ 0.00	+ 7.93
066 Other Leather N.E.C	0.2567	658.87	658.87	207.02	+ 0.00	+ <u>218.2</u>
						<u>6</u>
067 Footwears	0.1575	168.09	168.09	168.09	+ 0.00	+ 0.00
<b>Other Transportable Goods</b>	<b>22.3659</b>	<b>232.38</b>	<b>227.00</b>	<b>198.63</b>	+ <b>2.37</b>	+ <b>16.99</b>
068 Timber	0.0165	245.35	244.62	237.00	+ 0.30	+ 3.52
069 Printing Paper	0.4279	174.76	174.76	170.68	+ 0.00	+ 2.39
070 Hard Board	0.1579	291.67	291.67	260.42	+ 0.00	+ 12.00
071 Coke	0.2797	163.45	163.45	163.45	+ 0.00	+ 0.00
072 Motor Spirit	1.5336	183.16	167.06	148.14	+ 9.64	+ 23.64
073 Diesel Oil	5.2664	264.15	249.21	211.29	+ 5.99	+ 25.02
074 Kerosine Oil	0.2151	258.40	238.48	212.90	+ 8.35	+ 21.37
075 Furnace Oil	3.2664	188.96	185.83	148.26	+ 1.68	+ 27.45
076 Mobil Oil	0.7114	224.15	221.27	201.08	+ 1.30	+ 11.47
077 Chemicals	1.7720	222.74	221.50	191.65	+ 0.56	+ 16.22
078 Dyeing Material	0.1539	155.94	155.94	146.55	+ 0.00	+ 6.41
079 Fertilizers	2.8657	268.58	268.91	228.94	- 0.12	+ 17.31
080 Pesticides	0.2763	325.17	316.64	312.26	+ 2.69	+ 4.13
081 Insecticides	0.1276	150.13	150.13	142.19	+ 0.00	+ 5.58
082 Paints & Varnishes	0.1916	369.27	369.27	301.12	+ 0.00	+ 22.63
083 Medicines	1.1428	196.13	194.23	177.04	+ 0.98	+ 10.78
084 Soaps & Detergents	0.8168	202.35	202.19	190.80	+ 0.08	+ 6.05
085 Auto Tyres	0.2703	204.36	204.36	177.11	+ 0.00	+ 15.39
086 Plastic Products	0.4550	246.72	246.72	240.04	+ 0.00	+ 2.78
087 Glass sheets	0.2089	337.30	337.30	302.27	+ 0.00	+ 11.59
088 Other Glass Articles	0.1635	331.31	331.31	318.10	+ 0.00	+ 4.15
089 Ceramics & Sanitary Fixture	0.0244	252.16	252.16	236.41	+ 0.00	+ 6.66
090 Bricks, Blocks & Tiles	0.1566	227.67	226.38	221.69	+ 0.57	+ 2.70
091 Cement	1.8145	232.74	235.80	223.54	- 1.30	+ 4.12
092 Bed Foam	0.0006	181.83	181.83	175.33	+ 0.00	+ 3.71
093 Matches	0.0505	172.57	172.57	171.36	+ 0.00	+ 0.71
<b>Metal Product, Machinery &amp; Eq</b>	<b>8.7156</b>	<b>194.68</b>	<b>194.35</b>	<b>183.47</b>	+ <b>0.17</b>	+ <b>6.11</b>
094 Pig Iron	0.0593	128.97	128.97	128.97	+ 0.00	+ 0.00
095 Steel Bar & Sheets	1.4022	180.64	178.62	163.92	+ 1.13	+ 10.20
096 Pipe Fittings	0.0780	251.44	251.44	215.66	+ 0.00	+ 16.59
097 Steel Products	0.3879	189.42	189.42	177.24	+ 0.00	+ 6.87
098 Engines & Motors	0.0046	116.98	116.98	116.98	+ 0.00	+ 0.00
099 Vacuum Pumps	0.0155	123.69	123.69	123.69	+ 0.00	+ 0.00
100 Air Conditioners	0.0049	218.02	218.02	203.80	+ 0.00	+ 6.98
101 Cultivators	0.0551	190.66	190.66	190.66	+ 0.00	+ 0.00
102 Chuff Cutter	0.1293	153.46	153.46	153.46	+ 0.00	+ 0.00
103 Tractors	0.0028	226.93	226.93	201.75	+ 0.00	+ 12.48
104 Lathe Machines	0.0525	299.21	299.21	241.06	+ 0.00	+ 24.12
105 Concrete Mixture	0.0107	138.83	138.83	138.83	+ 0.00	+ 0.00
106 Fridge, WashM, SewM, Fans, Iron	1.1645	251.74	251.74	226.35	+ 0.00	+ 11.22
107 Electric Wires	0.0912	212.00	212.00	208.22	+ 0.00	+ 1.82
108 Lighting Equipments	1.4431	175.37	175.37	174.04	+ 0.00	+ 0.76
109 Radio & Television	0.1843	150.87	150.87	140.42	+ 0.00	+ 7.44
110 Motor Vehicles	0.0244	235.59	235.59	211.00	+ 0.00	+ 11.65
111 Motorcycles	0.2570	160.54	160.54	133.88	+ 0.00	+ 19.91
112 Bicycles	3.3483	194.31	194.31	187.65	+ 0.00	+ 3.55

**Annexure – C**

**CPI by Income Quintiles and Commodity Groups (2007-08=100 May, 2019 (% change with April, 2019) MoM**

Income Quintiles	General	Food and non-alcoholic Beverages	Alcoholic Beverages, Tobacco	Clothing and foot-wear	Housing, water, Elec., Gas and other fuels	Furnishing and household equipment maintenance	Health	Transport	Communication	Recreation and culture	Education	Restaurants and hotels	Misc. goods and services
<b>Combine</b>	<b>0.78</b>	<b>1.15</b>	<b>0.37</b>	<b>1.36</b>	<b>0.02</b>	<b>0.68</b>	<b>0.59</b>	<b>2.84</b>	<b>0.09</b>	<b>0.32</b>	<b>0.00</b>	<b>0.38</b>	<b>0.32</b>
Income Quintile 1	0.85	1.19	0.40	1.39	0.03	0.47	0.62	1.52	0.09	0.38	0.00	0.36	0.71
Income Quintile 2	0.80	1.13	0.41	1.38	0.01	0.51	0.62	2.07	0.12	0.38	0.00	0.37	0.71
Income Quintile 3	0.78	1.09	0.40	1.36	0.01	0.55	0.63	2.38	0.11	0.36	0.00	0.38	0.62
Income Quintile 4	0.78	1.09	0.40	1.36	0.01	0.62	0.63	2.86	0.09	0.34	0.00	0.38	0.55
Income Quintile 5	0.77	1.18	0.32	1.36	0.03	0.74	0.55	2.98	0.09	0.28	0.00	0.38	0.05

**CPI by Income Quintiles and Commodity Groups (2007-08=100) May, 2019 (% change with May, 2018) YoY**

Income Quintiles	General	Food and non-alcoholic Beverages	Alcoholic Beverages, Tobacco	Clothing and foot-wear	Housing, water, Elec., Gas and other fuels	Furnishing and household equipment maintenance	Health	Transport	Communication	Recreation and culture	Education	Restaurants and hotels	Misc. goods and services
<b>Combine</b>	<b>9.11</b>	<b>8.58</b>	<b>13.36</b>	<b>6.49</b>	<b>9.96</b>	<b>8.76</b>	<b>8.69</b>	<b>16.67</b>	<b>7.56</b>	<b>7.09</b>	<b>5.46</b>	<b>5.81</b>	<b>8.13</b>
Income Quintile 1	8.04	9.06	14.46	6.73	5.34	9.00	8.70	19.44	3.32	6.37	4.60	5.95	6.47
Income Quintile 2	7.90	8.80	14.41	6.63	5.65	8.88	8.73	18.10	3.99	6.34	4.52	5.94	6.50
Income Quintile 3	7.82	8.68	14.31	6.55	5.49	8.73	8.78	17.49	4.83	6.34	4.53	5.85	6.90
Income Quintile 4	9.34	8.56	13.97	6.46	11.47	8.70	8.74	17.01	6.29	6.55	4.52	5.81	7.20
Income Quintile 5	10.17	8.40	12.25	6.41	13.01	8.75	8.63	16.31	8.92	7.73	5.92	5.78	9.27