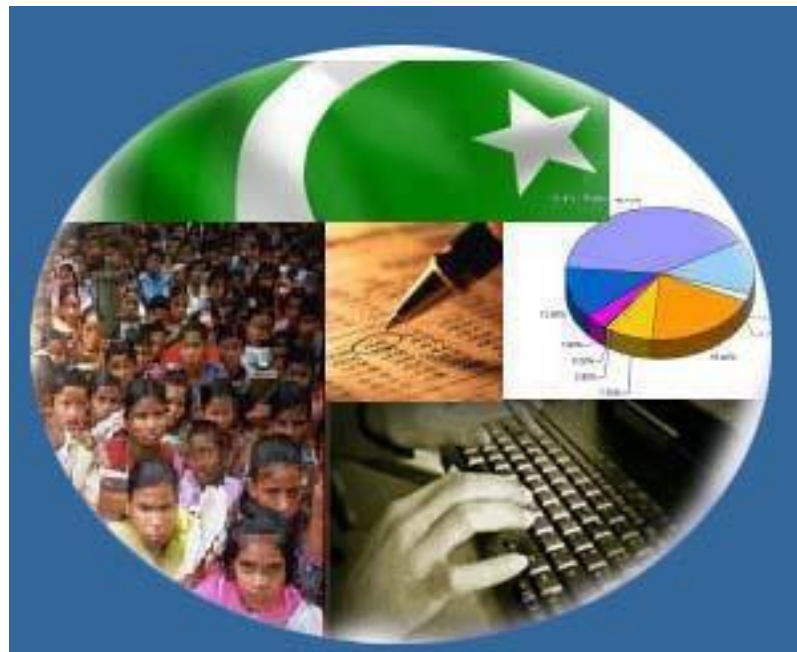




Monthly Review on Price Indices



March, 2019
(Base 2007-08)

Government of Pakistan
Ministry of Statistics
Pakistan Bureau of Statistics
Islamabad

Inflation in Brief

1. CPI inflation General increased by 9.4% on year-on-year basis in March, 2019 as compared to an increase of 8.2% in the previous month and 3.2% in March 2018. On month-on-month basis, it increased by 1.4% in March 2019 as compared to an increase of 0.6% in the previous month and an increase of 0.3% in corresponding month i.e. March 2018.
2. Core inflation measured by non-food non-energy CPI (Core NFNE) increased by 8.5% on (YoY) basis in March 2019 as compared to an increase of 8.8% in the previous month and 5.8% in March 2018. On (MoM) basis, it increased by 0.5% in March 2019 as compared to an increase of 0.2% in previous month, and an increase of 0.7% in corresponding month of last year i.e. March 2018.
3. Core inflation, measured by 20% weighted trimmed mean CPI (Core Trimmed) increased by 7.9% on (YoY) basis in March 2019 as compared to 7.7% in the previous month and by 4.1% in March 2018. On (MoM) basis, it increased by 0.4% in March 2019 as compared to an increase of 0.2% in the previous month and an increase of 0.2% in corresponding month of last year i.e. March 2018.
4. The CPI by Income Quintiles and Commodity Groups for March 2019 (MoM and YoY) is placed at **Annexure-C**.
5. SPI inflation on YoY basis increased by 8.8% in March 2019 as compared to an increase of 6.5% a month earlier and a decrease of 1.8% in March 2018. On MoM basis, it increased by 1.6% as compared to an increase of 1.5% in the previous month and a decrease of 0.6% in corresponding month of last year i.e. March 2018.
6. WPI inflation on YoY basis increased by 12.6% in March 2019 as compared to an increase of 11.0% a month earlier and an increase of 3.6% in March 2018. WPI inflation on MoM basis increased by 1.7% in March 2019 as compared to an increase of 0.9% a month earlier and an increase of 0.2% in corresponding month of last year i.e. March 2018.
7. Figures 1 and 2 show graphically the data of Table1. Table1.1 shows "Period Average" and "YoY" percent changes in indices of three years.

Table 1: Inflation (%) (Base 2007-08)

Period	CPI						Core Inflation				SPI**		WPI	
	General		Food		Non-food		NFNE*		Trimmed		YoY	MoM	YoY	MoM
	YoY	MoM	YoY	MoM	YoY	MoM	YoY	MoM	YoY	MoM				
Feb-18	3.8	-0.3	2.2	-1.1	4.9	0.2	5.2	0.2	4.3	0.1	0.5	-1.2	4.1	-0.1
Mar-18	3.2	0.3	0.1	-0.3	5.4	0.7	5.8	0.7	4.1	0.2	-1.8	-0.6	3.6	0.2
Apr-18	3.7	1.8	-0.2	1.5	6.4	2.1	7.0	2.5	5.0	1.6	-0.5	0.4	4.0	1.3
May-18	4.2	0.5	1.0	1.0	6.4	0.2	7.0	0.2	5.1	0.3	0.5	0.1	5.6	1.3
Jun-18	5.2	0.6	3.0	0.8	6.7	0.4	7.1	0.3	5.4	0.2	1.9	1.8	7.6	1.5
Jul-18	5.8	0.9	3.5	0.6	7.4	1.2	7.6	1.2	5.9	0.9	3.6	1.2	10.5	2.4
Aug-18	5.8	0.2	3.3	0.2	7.6	0.2	7.7	0.2	5.9	0.2	3.3	0.2	11.0	0.8
Sep-18	5.1	-0.1	1.4	-0.7	7.7	0.3	8.0	0.4	5.8	0.1	1.0	-0.1	9.2	-1.5
Oct-18	6.8	2.3	2.7	1.9	9.6	2.6	8.2	1.1	6.7	0.8	1.3	1.1	13.1	4.2
Nov-18	6.5	0.1	1.8	-0.5	9.8	0.5	8.3	0.4	6.7	0.3	1.3	0.3	13.5	0.7
Dec-18	6.2	-0.4	0.9	-1.4	9.8	0.2	8.4	0.3	6.9	0.3	2.0	0.0	12.1	-0.9
Jan-19	7.2	1.0	2.4	0.3	10.5	1.4	8.7	1.1	7.7	1.0	3.7	0.6	9.9	-0.2
Feb-19	8.2	0.6	5.0	1.4	10.4	0.1	8.8	0.2	7.7	0.2	6.5	1.5	11.0	0.9
Mar-19	9.4	1.4	8.4	2.9	10.1	0.5	8.5	0.5	7.9	0.4	8.8	1.6	12.6	1.7

*NFNE is non-food non-energy, ** SPI for quintile 1. Digits 0.0* are due to rounding off.

Table 1.1 : Period Average and YoY % Changes of Indices (Base 2007-08)

Index	Average July- March % changes			March over March % changes		
	2018-19	2017-18	2016-17	2019	2018	2017
CPI	6.79	3.78	4.01	9.42	3.25	4.94
SPI	3.46	0.96	1.42	8.81	-1.82	3.12
WPI	11.44	2.70	3.79	12.63	3.65	6.40

Figure 1: CPI Inflation YoY, Special Indices

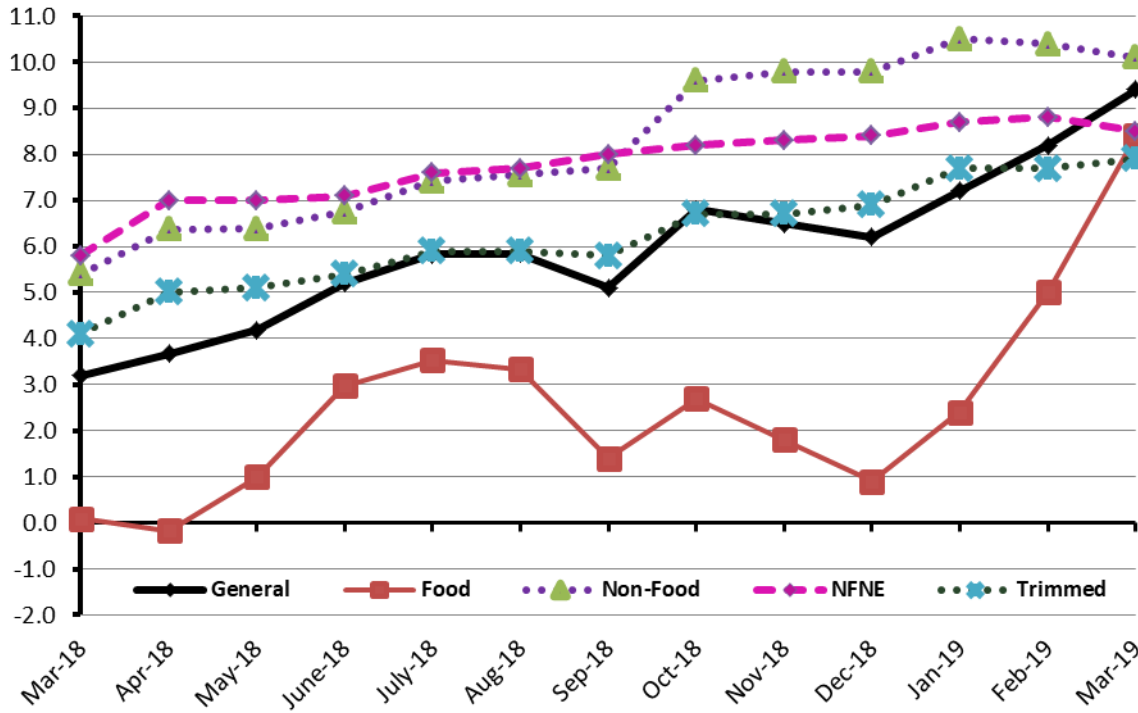
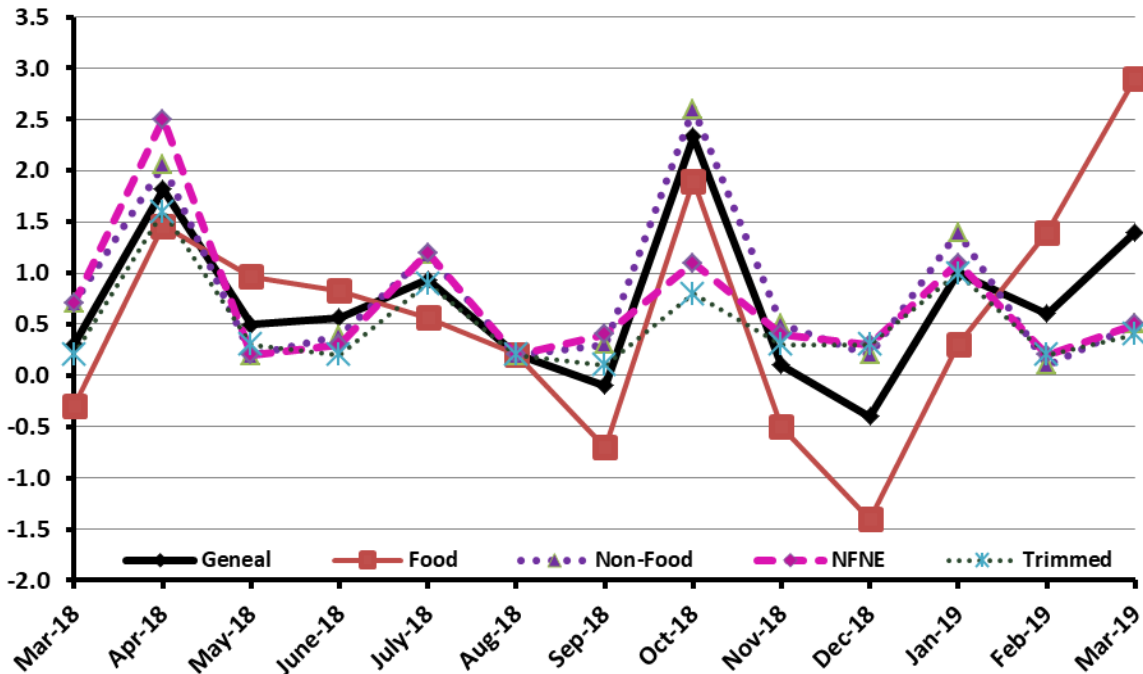


Figure 2: CPI Inflation MoM, Special Indices



I. Consumer Price Index (CPI)

The Consumer Price Index of March 2019 is increased by 1.42% over February 2019 and increased by 9.41% over corresponding month of the last year i.e. March 2018.

Table 2 : Consumer Price Index by Group of Commodities and Services (Base 2007-08)

No	Group	Group Weight (%)	Indices			% Change March 2019 Over		Impact (In % points) March 2019 Over	
			Mar 2019	Feb 2019	Mar 2018	Feb 2019	Mar 2018	Feb 2019	Mar 2018
	General	100.00	240.98	237.61	220.25	1.42	9.41	1.42	9.41
1.	Food & Non-alcoholic Beverages	34.83	247.17	239.59	228.39	3.16	8.22	1.11	2.97
	<i>Non-perishable Food Items</i>	29.84	245.13	243.00	231.03	0.88	6.10	0.27	1.91
	<i>Perishable Food Items</i>	4.99	259.40	219.23	212.62	18.32	22.00	0.84	1.06
2.	Alcoholic Bev.& Tobacco	1.41	355.49	354.79	316.59	0.20	12.29	0.00	0.25
3.	Clothing & Footwear	7.57	263.53	261.82	245.80	0.65	7.21	0.05	0.61
4.	Housing, Water, Electricity, Gas & Fuels	29.41	226.12	226.02	202.71	0.04	11.55	0.01	3.13
5.	Furnishing & Household Equipment Maintenance	4.21	256.99	255.07	234.68	0.75	9.51	0.03	0.43
6.	Health	2.19	239.13	237.68	221.25	0.61	8.08	0.01	0.18
7.	Transport	7.20	211.31	209.05	186.98	1.08	13.01	0.07	0.80
8.	Communication	3.22	143.65	143.64	133.37	0.01	7.71	0.00	0.15
9.	Recreation & Culture	2.02	219.76	215.80	200.40	1.84	9.66	0.03	0.18
10.	Education	3.94	292.01	289.13	275.17	1.00	6.12	0.05	0.30
11.	Restaurants & Hotels	1.23	306.47	303.57	287.84	0.96	6.47	0.02	0.10
12.	Miscellaneous	2.76	282.45	280.40	256.36	0.73	10.18	0.02	0.33

Main contributors to month-on-month and year-on-year percentage changes are given below and detail is given in Annexure A.

1. Month-on-month Top few commodities which varied from previous month i.e. February 2019 are given below: -

Food Increased: Onions (39.28%), Fresh Vegetables (24.43%), Tomatoes (18.83%), Chicken (15.88%), Pulse Moong (12.68%), Fresh Fruits (12.52%), Gur (2.88%), Sugar (2.74%), Beans (1.23%), Fish (1.18%), Spices (0.91%), Pulse Gram (0.60%), Vegetable Ghee (0.58%), Rice (0.41%), Pulse Masoor (0.31%), Bakery & Confectionary (0.31%), Cigarettes (0.27%), Wheat Flour (0.20%), Cooking Oil (0.18%), Tea (0.17%), Milk Fresh (0.17%) and Wheat (0.16%).

Decreased: Eggs (6.32%), Potatoes (5.00%), Betel Leaves & Nuts (2.09%), Gram Whole (0.70%) and Wheat Product (0.41%).

Non-food Increased: Text Book (3.95%), Cotton Cloths (2.30%), Medical Equipments (2.24%), Motor Fuel (1.54%), Kerosene Oil (1.51%), Household Servant (1.35%), Plastic Products (1.32%), Stationery (1.18%), Drugs and Medicines (1.16%), Construction Wage Rates (1.16%), Education (1.00%), Transport Services (0.97%), Personal Equipments (0.96%), Construction Input Items (0.79%) and Motor Vehicle (0.67%).

Decreased: Woollen Cloth (0.63%).

Year-on-Year: Top few commodities which varied from previous year i.e. March, 2018 are given below:-

Food Increased: Tomatoes (315.30%), Fresh Vegetables (28.18%), Pulse Moong (22.69%), Sugar (18.20%), Spices (17.66%), Gur (17.18%), Onions (15.85%), Honey (15.23%), Cigarettes (14.73%), Meat (13.33%), Dry Fruits (11.75%), Beans (10.09%), Pulse Gram (9.87%), Eggs(8.30%), Sweet Meat (8.28%), Milk Powder (8.07%), Fish (8.02%), Tea (7.87%), Condiments(7.43%), Vegetable Ghee (7.18%) and Rice (5.11%).

Decreased: Betel Leaves & Nuts (37.02%), Potatoes (15.57%), Gram Whole (5.15%), Fresh Fruits (1.38%) and Chicken (1.20%).

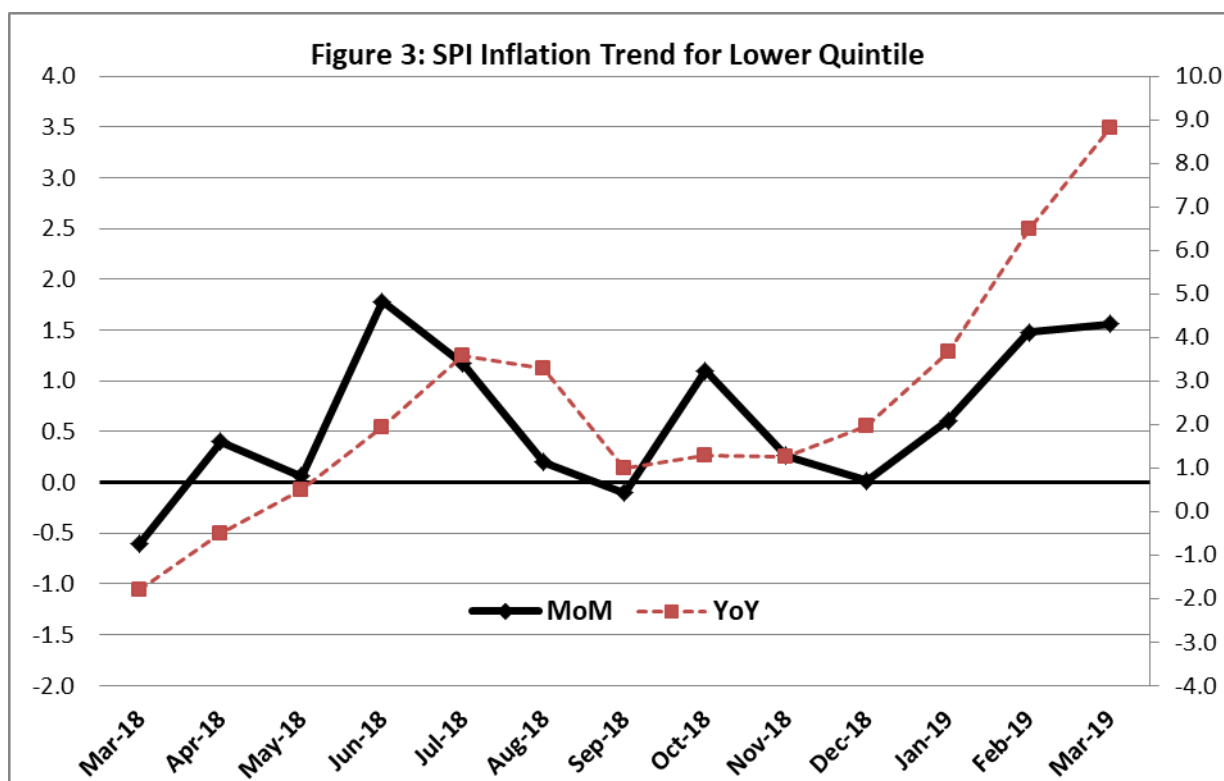
Non-food Increased: Gas (85.31%), Newspapers (15.98%), Transport Services (15.35%), Cosmetics (13.56%), Personal Equipment (13.25%), Stationery (13.14%), Motor Fuel (12.99%), Utensils (12.64%), Plastic Products (12.21%), Construction Input Items (11.72%), Motor Vehicles (11.08%), Washing Soap & Detergents (10.88%), Motor Vehicle accessories (10.29%), Textbooks (10.06%), Household Servant (9.50%), Construction Wage Rates (9.43%), Electricity (8.48%), House Rent (8.20%), Kerosene Oil (7.19%) and Education (6.12%).

II. Sensitive Price Indicator

Quintile-wise percentage changes YoY and MoM are given below in Table 3. The series from March 2018 to March 2019 is also graphed below in Figure 3.

Table 3: Sensitive Price Indicator (Base 2007-08)					
Quintiles	Indices			% Change March, 2019 over	
	March, 2019	February, 2019	March, 2018	February, 2019	March, 2018
1	227.82	224.32	209.37	1.56	8.81
2	237.38	233.67	217.75	1.59	9.01
3	239.29	235.48	219.57	1.62	8.98
4	253.77	249.83	224.75	1.58	12.91
5	260.33	256.43	224.00	1.52	16.22
Combined	248.19	244.35	221.67	1.57	11.96

Table 3.1 : Weekly Percentage Change of SPI During March, 2019				
Quintiles	% Change with Previous week			
	28.03.2019	21.03.2019	14.03.2019	07.03.2019
Quintile 1	-0.36	-0.25	0.38	1.08
Combined	-0.36	-0.19	0.19	1.16



III. Wholesale Price Index

The Wholesale Price Index for March, 2019 increased by 1.70% over February, 2019. It increased by 12.63% over the corresponding month of the last year. YoY and MoM movements, from March, 2018 to March, 2019 are also graphed below in Figure 4.

Table 4 : Wholesale Price Index by Group of Commodities (Base 2007-08)									
No.	Group	Group Weight (%)	Indices			% Change Mar, 2019 over		Impact (in %age points) Mar, 2019 over	
			Mar. 2019	Feb. 2019	Mar, 2018	Feb. 2019	Mar, 2018	Feb. 2019	Mar, 2018
	General	100.00	253.67	249.44	225.22	1.70	12.63	1.70	12.63
1.	Agriculture, Forestry & Fishery Products	25.77	278.88	269.34	254.55	3.54	9.56	0.99	2.78
2.	Ores & Minerals, Electricity, Gas & Water	12.04	291.02	291.06	242.92	-0.01	19.80	0.00	2.57
3.	Food Products, Beverages & Tobacco, Textiles, Apparel & Leather Products	31.11	258.24	256.00	231.06	0.88	11.76	0.28	3.75
	i. Food Products, Bev. & Tobacco	20.07	261.53	259.45	238.95	0.80	9.45	0.17	2.01
	ii. Textiles and Apparel	10.33	246.33	245.44	218.16	0.36	12.91	0.04	1.29
	iii. Leather Products	0.71	338.12	312.14	195.77	8.32	72.71	0.07	0.45
4.	Other Transportable Goods except Metal Products, Machinery & Equipment	22.37	222.43	217.51	191.75	2.26	16.00	0.44	3.05
5.	Metal Products, Machinery & Equipment	8.72	191.40	191.60	179.07	-0.10	6.89	-0.01	0.48

Main contributors to month-on-month and year-on-year percentage changes are given below and detail is given in Annexure B.

1. **Month-on-month** Top few commodities which varied from previous month i.e. February, 2019 are given below:-

Increased: Jowar (33.95%), Vegetables (27.61%), Sugar Crops (26.77%), Bajra (18.13%), Poultry (16.41%), Other Leather N.E.C (14.35%), Fresh Fruits (11.70%), Furnace Oil (9.52%), Sugar (4.97%), Kerosene Oil (4.86%), Diesel (3.91%), Dying Material (3.46%), Rice (3.36%), Petrol (2.78%), Maize (2.69%), Medicines (2.35%), Pulses (2.26%), Dairy Products N.E.C. (1.29%) and Other Fabrics (1.09%).

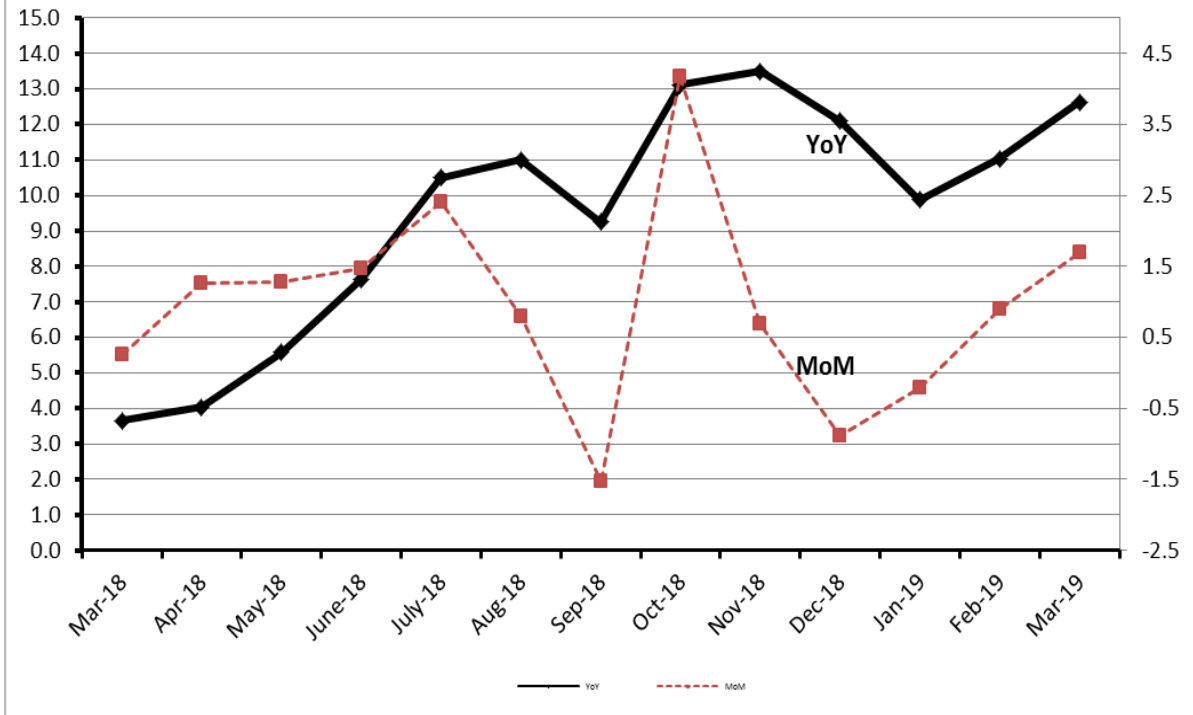
Decreased: Potatoes (11.10%), Eggs (8.01%), Oil Cakes (1.21%) and Steel Bar & Sheets (1.16%).

2. **Year-on-year** Top few commodities which varied from previous year i.e. March, 2018 are given below:-

Increased: Other Leather N.E.C (174.46%), Jowar (61.46%), Natural Gas Liquefied (49.64%), Furnace Oil (45.88%), Vegetables (39.60%), Sugar Crops (35.74%), Bajra (34.38%), Hard Board (29.63%), Motorcycle (26.30%), Lathe Machine (24.12%), Tobacco Products (23.69%), Sugar (22.77%), Stimulant & Spice Crops (22.32%), Paints & Varnishes (21.01%), Spices (19.01%), Cotton Yarn (18.96%), Fibre Crops (18.51%), Fertilizers (18.02%), Chemicals (17.86%), Maize (17.25%), Steel Bars & Sheets (16.31%), Diesel (15.79%), Footwears (15.52%), Rice (15.46%), Auto Tyres (15.30%), Dried Fruits & Nuts (13.82%), Kerosene Oil (13.09%), Cement (12.71%), Tractors (12.48%) and Meat of Animals (12.18%).

Decreased: Potatoes (21.72%), Hides & Fur Skins (8.82%), Fish (2.84%) and Electrical Energy (1.42%).

Figure 4: WPI Inflation



Annexure – A: CPI by Commodity Groups and Commodities (2007-08=100)

Item and Specification	Weight	Index Numbers			% Change in Mar 2019 over			
		Mar 2019	Feb 2019	Mar 2018	Feb 2019	Mar 2018		
<i>General</i>	100.00	240.99	237.61	220.25	+	1.42	+	9.41
<i>Food and non-alcoholic Beverages</i>	34.834	247.17	239.59	228.39	+	3.16	+	8.22
1 Wheat	0.3477	212.59	212.26	204.63	+	0.16	+	3.89
2 Wheat Flour	4.1648	217.34	216.91	211.52	+	0.20	+	2.75
3 Wheat Product	0.0959	217.61	218.51	214.16	-	0.41	+	1.61
4 Besan	0.1500	275.20	274.79	267.57	+	0.15	+	2.85
5 Rice	1.5821	202.28	201.45	192.45	+	0.41	+	5.11
6 Cereals	0.1563	270.70	269.41	259.04	+	0.48	+	4.50
7 Bakery & Confectionary	1.1550	234.33	233.60	224.66	+	0.31	+	4.30
8 Nimco	0.4574	264.08	263.41	258.14	+	0.25	+	2.30
9 Meat	2.4303	332.66	331.09	293.53	+	0.47	+	13.33
10 Chicken	1.3596	205.30	177.16	207.80	+	15.8	-	1.20
11 Fish	0.2970	242.29	239.46	224.31	+	1.18	+	8.02
12 Milk Fresh	6.6800	291.26	290.78	279.50	+	0.17	+	4.21
13 Milk Products	0.6338	284.62	284.16	272.17	+	0.16	+	4.57
14 Milk Powder	0.1129	258.38	257.66	239.08	+	0.28	+	8.07
15 Eggs	0.4555	214.46	228.93	198.03	-	6.32	+	8.30
16 Mustard Oil	0.0952	167.29	167.25	162.97	+	0.02	+	2.65
17 Cooking Oil	1.7538	148.45	148.19	139.23	+	0.18	+	6.62
18 Vegetable Ghee	2.0714	154.11	153.22	143.79	+	0.58	+	7.18
19 Dry Fruits	0.2543	312.73	311.34	279.84	+	0.45	+	11.75
20 Fresh Fruits	1.8649	262.61	233.39	266.29	+	12.5	-	1.38
21 Pulse Masoor	0.2712	166.04	165.53	160.02	+	0.31	+	3.76
22 Pulse Moong	0.2336	268.48	238.26	218.82	+	12.6	+	22.69
23 Pulse Mash (Washed)	0.2098	220.80	220.61	217.65	+	0.09	+	1.45
24 Pulse Gram	0.2361	284.87	283.17	259.27	+	0.60	+	9.87
25 Gram Whole	0.1616	266.42	268.30	280.90	-	0.70	-	5.15
26 Beans	0.0269	269.96	266.68	245.21	+	1.23	+	10.09
27 Potatoes	0.4452	135.14	142.26	160.07	-	5.00	-	15.57
28 Onion	0.5093	236.56	169.85	204.19	+	39.2	+	15.85
29 Tomatoes	0.4172	404.71	340.59	97.45	+	18.8	+	315.30
30 Fresh Vegetables	1.7543	259.66	208.68	202.58	+	24.4	+	28.18
31 Sugar	1.0445	218.09	212.28	184.51	+	2.74	+	18.20
32 Gur	0.0220	279.41	271.58	238.44	+	2.88	+	17.18
33 Honey	0.0446	392.98	389.58	341.03	+	0.87	+	15.23
34 Sweet Meat	0.2483	278.37	277.48	257.09	+	0.32	+	8.28
35 Beverages	1.1990	234.23	234.18	227.38	+	0.02	+	3.01
36 Jam, Tomato Ketchup & Pickles	0.2454	239.87	239.50	225.48	+	0.15	+	6.38
37 Condiments	0.2656	299.19	297.84	278.51	+	0.45	+	7.43
38 Spices	0.5441	282.09	279.54	239.75	+	0.91	+	17.66
39 Tea	0.8377	319.96	319.43	296.63	+	0.17	+	7.87
<i>Alcoholic Beverages, Tobacco</i>	1.4135	355.50	354.79	316.60	+	0.20	+	12.29
40 Cigarettes	1.3906	351.79	350.86	306.62	+	0.27	+	14.73
41 Betel Leaves & Nuts	0.0229	580.96	593.36	922.46	-	2.09	-	37.02
<i>Clothing and footwear</i>	7.5708	263.54	261.82	245.80	+	0.66	+	7.22
42 Cotton Cloth	1.7286	259.30	253.46	238.01	+	2.30	+	8.95
43 Woolen Cloth	0.8759	278.73	280.51	264.09	-	0.63	+	5.54
44 Readymade Garments	0.9739	270.90	269.46	256.20	+	0.53	+	5.74
45 Woolen Readymade Garments	0.3964	289.31	289.31	266.38	+	0.00	+	8.61
46 Hosiery	0.5094	277.45	275.19	259.22	+	0.82	+	7.03

Annexure A: CPI by Commodity Groups and Commodities (2007-08=100)

Item and Specification	Weight	Index Numbers			% Change in Mar 2019 over		
		Mar 2019	Feb 2019	Mar 2018	Feb 2019	Mar 2018	
47 Dopatta	0.4412	273.38	272.04	255.58	+ 0.49	+ 6.96	
48 Cleaning and Laundry	0.2110	303.52	300.26	284.44	+ 1.09	+ 6.71	
49 Tailoring	0.8840	359.07	358.48	336.91	+ 0.16	+ 6.58	
50 Footwear	1.5504	181.18	181.10	167.95	+ 0.04	+ 7.88	
<u>Housing, water, Elec., Gas and other</u>	29.4149	226.12	226.02	202.71	+ 0.04	+ 11.55	
51 House Rent	21.8149	212.02	212.02	195.96	+ 0.00	+ 8.20	
52 Construction Input Items	0.5623	295.39	293.08	264.40	+ 0.79	+ 11.72	
53 Construction Wage Rates	0.3331	281.40	278.16	257.14	+ 1.16	+ 9.43	
54 Water Supply	0.4971	195.29	194.95	174.83	+ 0.17	+ 11.70	
55 Electricity	4.3985	258.28	258.28	238.10	+ 0.00	+ 8.48	
56 Gas	1.5756	292.94	292.94	158.08	+ 0.00	+ <u>85.31</u>	
57 Kerosene Oil	0.0057	278.25	274.12	259.58	+ 1.51	+ 7.19	
58 Firewood Whole	0.2277	307.17	305.94	302.24	+ 0.40	+ 1.63	
<u>Furnishing and household</u>	4.2082	257.00	255.07	234.67	+ 0.76	+ 9.52	
59 Furniture	0.3315	252.79	251.62	228.22	+ 0.46	+ 10.77	
60 Household Textiles	0.6489	253.05	251.59	236.78	+ 0.58	+ 6.87	
61 Household Equipment	0.5936	198.67	198.07	185.70	+ 0.30	+ 6.98	
62 Utensils	0.3212	273.60	272.66	242.89	+ 0.34	+ 12.64	
63 Plastic Products	0.2547	245.73	242.52	218.99	+ 1.32	+ 12.21	
64 Washing Soaps & Detergents	0.7893	261.30	260.03	235.67	+ 0.49	+ 10.88	
65 Sewing Needle & Dr Cell	0.1496	231.04	230.38	211.92	+ 0.29	+ 9.02	
66 Household Servant	1.0432	290.60	286.73	265.40	+ 1.35	+ 9.50	
67 Marriage Hall Charges	0.0762	277.33	275.23	257.76	+ 0.76	+ 7.59	
<u>Health</u>	2.1868	239.12	237.67	221.26	+ 0.61	+ 8.07	
68 Drugs & Medicines	1.2667	204.15	201.80	187.99	+ 1.16	+ 8.60	
69 Medical Equipments	0.0080	277.26	271.19	256.26	+ 2.24	+ 8.19	
70 Doctor (MBBS) Clinic Fee	0.5904	321.75	321.75	300.06	+ 0.00	+ 7.23	
71 Medical Tests	0.3217	224.24	223.77	206.75	+ 0.21	+ 8.46	
<u>Transport</u>	7.2023	211.31	209.05	186.98	+ 1.08	+ 13.01	
72 Motor Vehicles	0.6630	206.44	205.06	185.84	+ 0.67	+ 11.08	
73 Motor Vehicle Accessories	0.2439	238.24	237.99	216.02	+ 0.11	+ 10.29	
74 Motor Fuel	3.0269	189.40	186.52	167.63	+ 1.54	+ 12.99	
75 Mechanical Service	0.4552	256.98	255.38	238.14	+ 0.63	+ 7.91	
76 Motor Vehicle Tax	0.1099	210.18	210.18	210.18	+ 0.00	+ 0.00	
77 Transport Services	2.7034	226.96	224.79	196.76	+ 0.97	+ 15.35	
<u>Communication</u>	3.2198	143.65	143.63	133.37	+ 0.01	+ 7.71	
78 Postal Services	0.0662	272.63	272.63	259.00	+ 0.00	+ 5.26	
79 Communication & Apparatus	3.1536	140.94	140.93	130.73	+ 0.01	+ 7.81	
<u>Recreation and culture</u>	2.0227	219.77	215.79	200.38	+ 1.84	+ 9.68	
80 Recreation & Culture	0.8634	137.69	137.68	132.03	+ 0.01	+ 4.29	
81 Text Books	0.5706	316.96	304.92	287.98	+ 3.95	+ 10.06	
82 Newspapers	0.1934	235.21	235.21	202.81	+ 0.00	+ 15.98	
83 Stationery	0.3953	251.19	248.25	222.02	+ 1.18	+ 13.14	
<u>Education</u>	3.9431	292.02	289.13	275.17	+ 1.00	+ 6.12	
84 Education	3.9431	292.02	289.13	275.17	+ 1.00	+ 6.12	
<u>Restaurants and hotels</u>	1.2286	306.48	303.57	287.84	+ 0.96	+ 6.48	
85 Readymade Food	1.2286	306.48	303.57	287.84	+ 0.96	+ 6.48	
<u>Misc. goods and services</u>	2.7550	282.45	280.40	256.35	+ 0.73	+ 10.18	
86 Personal Care	1.4935	250.69	249.74	234.18	+ 0.38	+ 7.05	
87 Cosmetics	0.3853	236.95	233.79	208.65	+ 1.35	+ 13.56	
88 Blades	0.0322	221.15	217.60	201.85	+ 1.63	+ 9.56	
89 Personal Equipments	0.8440	361.77	358.33	319.45	+ 0.96	+ 13.25	

Annexure B: Wholesale Price Indices by Major Groups & Commodities (2007-08=100)

Item and Specification	Weight	Index Numbers			% Change in Mar 2019 over			
		Mar 19	Feb 19	Mar 18	Feb 2019	Mar 2018		
General	100.0000	253.67	249.44	225.22	+	1.70	+	12.63
Agriculture Forestry & Fisher	25.7674	278.88	269.34	254.55	+	3.54	+	9.56
001 Wheat	0.6297	215.39	215.86	209.00	-	0.22	+	3.06
002 Maize	0.6764	240.50	234.21	205.11	+	2.69	+	17.25
003 Rice	2.4413	200.73	194.20	173.85	+	3.36	+	15.46
004 Sorghum / Jowar	0.0214	414.71	309.61	256.85	+	33.95	+	<u>61.46</u>
005 Millet / Bajra	0.0374	253.66	214.73	188.77	+	18.13	+	34.38
006 Vegetables	1.2441	272.54	213.58	195.23	+	27.61	+	39.60
007 Fresh Fruits	1.5144	299.74	268.34	291.61	+	11.70	+	2.79
008 Dry Fruits	0.2478	283.90	282.99	269.25	+	0.32	+	5.44
009 Cotton Seeds	1.1511	265.42	262.82	257.18	+	0.99	+	3.20
010 Other Oil Seeds	0.0722	187.30	188.20	177.04	-	0.48	+	5.80
011 Edible Roots / Potatoes	0.2540	115.94	130.41	148.10	-	11.10	-	21.72
012 Stimulant & Spice Crops	0.1634	325.84	322.69	266.39	+	0.98	+	22.32
013 Pulses	0.4901	249.11	243.61	240.45	+	2.26	+	3.60
014 Sugar Crops	1.0725	349.69	275.85	257.62	+	26.77	+	35.74
015 Fibre Crops	5.3169	278.10	278.10	234.67	+	0.00	+	18.51
016 Unmanufactured Tobacco	0.0742	324.89	325.00	308.03	-	0.03	+	5.47
017 Poultry	0.5633	219.94	188.94	219.05	+	16.41	+	0.41
018 Raw Milk from Bovine Animals	7.0279	288.02	286.63	275.47	+	0.48	+	4.56
019 Eggs	0.5034	215.43	234.20	201.84	-	8.01	+	6.73
020 Raw Animal Materials / Wool	0.0351	190.56	190.42	173.81	+	0.07	+	9.64
021 Hides & Fur Skins, Raw	0.4834	92.98	92.90	101.97	+	0.09	-	8.82
022 Fuel Wood in Logs	0.0179	295.14	295.14	283.56	+	0.00	+	4.08
023 Fish Live Fresh or Chilled	1.7295	463.18	462.20	476.70	+	0.21	-	2.84
Ores/Minerals, Elec., Gas & W	12.0389	291.02	291.06	242.92	-	0.01	+	19.80
024 Coal not Agglomerated	0.7508	155.29	155.29	155.29	+	0.00	+	0.00
025 Natural Gas Liquefied	5.7385	315.75	315.82	211.00	-	0.02	+	49.64
026 Salt & Pure Sodium Chloride	0.0584	275.23	275.23	266.38	+	0.00	+	3.32
027 Electrical Energy	5.4912	283.90	283.90	288.00	+	0.00	-	1.42
Food, Beverages, Tobacco, Textil	31.1122	258.24	256.00	231.06	+	0.88	+	11.76
Food Products, Beverages &	20.0718	261.53	259.45	238.95	+	0.80	+	9.45
028 Meat of Animals	3.4559	353.19	350.63	314.84	+	0.73	+	12.18
029 Vegetables & Fruit Juice	0.0058	228.62	228.62	224.97	+	0.00	+	1.62
030 Dried Fruits & Nuts	0.1733	331.44	329.84	291.20	+	0.49	+	13.82
031 Fruit Juices	0.3880	189.38	188.98	183.21	+	0.21	+	3.37
032 Vegetable Oils Refined	1.9242	164.09	163.26	156.57	+	0.51	+	4.80
033 Vegetable Ghee	1.5632	136.92	136.85	127.28	+	0.05	+	7.57
034 Oil Cakes	0.9611	247.94	250.97	226.67	-	1.21	+	9.38
035 Processed Liquid Milk	4.4437	299.78	296.92	288.23	+	0.96	+	4.01
036 Milk & Cream in Solid Form	0.0316	240.19	238.50	223.34	+	0.71	+	7.54
037 Ice Cream	0.0047	287.85	287.85	266.02	+	0.00	+	8.21
038 Dairy Products N.E.C	0.0117	293.13	289.39	272.54	+	1.29	+	7.55
039 Wheat Flour	2.3034	198.19	198.07	194.41	+	0.06	+	1.94
040 Other Cereal Flour	0.0604	229.53	231.67	210.20	-	0.92	+	9.20
041 Sugar Refined	1.7975	233.17	222.13	189.93	+	4.97	+	22.77
042 Chocolate	0.0139	100.00	100.00	100.00	+	0.00	+	0.00
043 Sugar Confectionary	0.0738	128.15	127.25	127.85	+	0.71	+	0.23
044 Coffee & Tea	0.7303	288.37	287.23	267.98	+	0.40	+	7.61
045 Spices	0.1449	240.67	241.32	202.23	-	0.27	+	19.01
046 Other Food Products	0.0336	316.48	314.10	294.50	+	0.76	+	7.46
047 Mineral Water	0.0207	212.04	210.16	211.50	+	0.89	+	0.26
048 Beverages	0.6303	176.55	176.55	173.00	+	0.00	+	2.05
049 Tobacco Products	1.2998	393.80	393.80	318.37	+	0.00	+	23.69
Textiles & Apparels	10.3289	246.33	245.44	218.16	+	0.36	+	12.91
050 Cotton Yarn	5.2491	264.15	263.36	222.05	+	0.30	+	18.96
051 Nylon Yarn	0.1719	143.99	143.99	143.99	+	0.00	+	0.00
052 Blended Yarn	0.1689	204.96	204.12	189.19	+	0.41	+	8.34
053 Woven Fabrics	0.0128	344.94	344.94	321.49	+	0.00	+	7.29
054 Cotton Fabrics	0.6343	225.33	223.85	214.23	+	0.66	+	5.18
055 Other Fabrics	1.1016	235.32	232.79	227.16	+	1.09	+	3.59
056 Silk & Reyon Fabrics	0.7350	194.81	194.81	188.14	+	0.00	+	3.55
057 Towels	0.1235	308.50	308.50	276.14	+	0.00	+	11.72

Annexure B: Wholesale Price Indices by Major Groups & Commodities (2007-08=100)

Item and Specification	Weight	Index Numbers			% Change in Mar 2019 over		
		Mar 19	Feb 19	Mar 18	Feb 2019	Mar 2018	
058 Blankets	0.0029	277.52	277.52	265.03	+	0.00	+ 4.71
059 Bed Sheets	0.0913	269.00	269.00	256.87	+	0.00	+ 4.72
060 Quilts	0.0019	229.26	229.26	222.32	+	0.00	+ 3.12
061 Woolen Carpets	0.0383	196.43	196.43	196.43	+	0.00	+ 0.00
062 Synthetic Carpets	0.0566	131.80	131.80	130.95	+	0.00	+ 0.65
063 Hosiery Products	0.8832	266.64	266.64	244.42	+	0.00	+ 9.09
064 Readymade Garments	1.0576	221.50	220.45	201.37	+	0.48	+ 10.00
Leather Products	0.7115	338.12	312.14	195.77	+	8.32	+ 72.71
065 Leather Without Hair	0.2973	229.55	228.93	212.68	+	0.27	+ 7.93
066 Other Leather N.E.C	0.2567	568.19	496.90	207.02	+	14.35	+ 174.46
067 Footwears	0.1575	168.09	168.09	145.51	+	0.00	+ 15.52
Other Transportable Goods	22.3659	222.43	217.51	191.75	+	2.26	+ 16.00
068 Timber	0.0165	244.62	244.62	237.00	+	0.00	+ 3.22
069 Printing Paper	0.4279	174.76	174.76	168.59	+	0.00	+ 3.66
070 Hard Board	0.1579	291.67	291.67	225.00	+	0.00	+ 29.63
071 Coke	0.2797	163.45	163.45	163.45	+	0.00	+ 0.00
072 Motor Spirit	1.5336	156.91	152.67	148.77	+	2.78	+ 5.47
073 Diesel Oil	5.2664	238.13	229.16	205.65	+	3.91	+ 15.79
074 Kerosine Oil	0.2151	230.47	219.79	203.79	+	4.86	+ 13.09
075 Furnace Oil	3.2664	183.68	167.71	125.91	+	9.52	+ 45.88
076 Mobil Oil	0.7114	213.34	213.34	200.85	+	0.00	+ 6.22
077 Chemicals	1.7720	222.25	222.04	188.57	+	0.09	+ 17.86
078 Dyeing Material	0.1539	155.94	150.72	146.55	+	3.46	+ 6.41
079 Fertilizers	2.8657	266.94	267.89	226.19	-	0.35	+ 18.02
080 Pesticides	0.2763	316.64	316.64	310.16	+	0.00	+ 2.09
081 Insecticides	0.1276	148.01	147.58	140.61	+	0.29	+ 5.26
082 Paints & Varnishes	0.1916	364.40	364.40	301.12	+	0.00	+ 21.01
083 Medicines	1.1428	185.56	181.30	177.01	+	2.35	+ 4.83
084 Soaps & Detergents	0.8168	201.14	200.46	191.35	+	0.34	+ 5.12
085 Auto Tyres	0.2703	204.20	204.20	177.11	+	0.00	+ 15.30
086 Plastic Products	0.4550	246.23	246.23	226.00	+	0.00	+ 8.95
087 Glass sheets	0.2089	337.30	337.30	302.27	+	0.00	+ 11.59
088 Other Glass Articles	0.1635	331.31	331.31	318.10	+	0.00	+ 4.15
089 Ceramics & Sanitary Fixture	0.0244	249.92	249.92	234.76	+	0.00	+ 6.46
090 Bricks, Blocks & Tiles	0.1566	227.28	228.34	223.30	-	0.46	+ 1.78
091 Cement	1.8145	237.32	238.29	210.55	-	0.41	+ 12.71
092 Bed Foam	0.0006	181.83	182.67	173.00	-	0.46	+ 5.10
093 Matches	0.0505	172.57	172.57	171.36	+	0.00	+ 0.71
Metal Product, Machinery & Eq	8.7156	191.40	191.60	179.07	-	0.10	+ 6.89
094 Pig Iron	0.0593	128.97	128.97	128.97	+	0.00	+ 0.00
095 Steel Bar & Sheets	1.4022	171.55	173.56	147.50	-	1.16	+ 16.31
096 Pipe Fittings	0.0780	238.51	238.51	215.66	+	0.00	+ 10.60
097 Steel Products	0.3879	189.19	189.08	176.70	+	0.06	+ 7.07
098 Engines & Motors	0.0046	116.98	116.98	116.98	+	0.00	+ 0.00
099 Vacuum Pumps	0.0155	123.69	123.69	123.69	+	0.00	+ 0.00
100 Air Conditioners	0.0049	211.33	211.33	200.10	+	0.00	+ 5.61
101 Cultivators	0.0551	190.66	190.66	190.66	+	0.00	+ 0.00
102 Chuff Cutter	0.1293	153.46	153.46	153.46	+	0.00	+ 0.00
103 Tractors	0.0028	226.93	226.93	201.75	+	0.00	+ 12.48
104 Lathe Machines	0.0525	299.21	299.21	241.06	+	0.00	+ 24.12
105 Concrete Mixture	0.0107	138.83	138.83	138.83	+	0.00	+ 0.00
106 Fridge,WashM,SewM,Fans,Iron	1.1645	243.04	242.23	218.55	+	0.33	+ 11.21
107 Electric Wires	0.0912	208.22	208.22	205.92	+	0.00	+ 1.12
108 Lighting Equipments	1.4431	174.13	174.13	171.39	+	0.00	+ 1.60
109 Radio & Television	0.1843	140.42	140.42	140.42	+	0.00	+ 0.00
110 Motor Vehicles	0.0244	229.70	227.69	211.00	+	0.88	+ 8.86
111 Motorcycles	0.2570	159.20	159.20	126.05	+	0.00	+ 26.30
112 Bicycles	3.3483	194.31	194.31	187.65	+	0.00	+ 3.55

Annexure – C

CPI by Income Quintiles and Commodity Groups (2007-08=100 March, 2019 (% change with February, 2019) MoM

Income Quintiles	General	Food and non-alcoholic Beverages	Alcoholic Beverages, Tobacco	Clothing and footwear	Housing, water, Elec., Gas and other fuels	Furnishing and household equipment maintenance	Health	Transport	Communication	Recreation and culture	Education	Restaurants and hotels	Misc. goods and services
Combine	1.42	3.16	0.20	0.66	0.04	0.76	0.61	1.08	0.01	1.84	1.00	0.96	0.73
Income Quintile 1	1.79	3.16	0.29	0.73	0.05	0.57	0.63	0.93	0.02	2.19	0.82	1.03	0.53
Income Quintile 2	1.68	3.16	0.29	0.72	0.03	0.58	0.63	0.90	0.01	2.10	0.77	1.03	0.57
Income Quintile 3	1.62	3.19	0.27	0.70	0.03	0.57	0.64	0.93	0.01	2.01	0.75	0.99	0.62
Income Quintile 4	1.51	3.23	0.23	0.66	0.03	0.60	0.63	1.04	0.01	1.91	0.81	0.96	0.66
Income Quintile 5	1.23	3.10	0.12	0.62	0.05	0.84	0.59	1.12	0.01	1.69	1.10	0.94	0.84

CPI by Income Quintiles and Commodity Groups (2007-08=100) March, 2019 (% change with March, 2018) YoY

Income Quintiles	General	Food and non-alcoholic Beverages	Alcoholic Beverages, Tobacco	Clothing and footwear	Housing, water, Elec., Gas and other fuels	Furnishing and household equipment maintenance	Health	Transport	Communication	Recreation and culture	Education	Restaurants and hotels	Misc. goods and services
Combine	9.41	8.22	12.29	7.22	11.55	9.52	8.07	13.01	7.71	9.68	6.12	6.48	10.18
Income Quintile 1	8.16	8.33	13.83	7.50	6.70	10.08	8.02	19.42	3.62	9.03	5.26	6.07	8.17
Income Quintile 2	8.14	8.26	13.74	7.40	7.11	9.97	8.08	16.24	4.13	8.96	5.18	6.14	8.31
Income Quintile 3	8.15	8.31	13.52	7.31	7.05	9.80	8.09	14.61	4.93	9.01	5.20	6.24	8.78
Income Quintile 4	9.69	8.28	12.91	7.20	13.17	9.69	8.05	13.10	6.39	9.23	5.20	6.39	9.15
Income Quintile 5	10.57	8.12	10.92	7.11	14.89	9.36	8.09	12.40	9.08	10.24	6.57	6.61	11.49