



# Monthly Review on Price Indices



**February, 2019**  
**(Base 2007-08)**

**Government of Pakistan**  
**Ministry of Statistics**  
**Pakistan Bureau of Statistics**  
**Islamabad**



## Inflation in Brief

1. CPI inflation General increased by 8.2% on year-on-year basis in February 2019 as compared to an increase of 7.2% in the previous month and 3.8% in February 2018. On month-on-month basis, it increased by 0.6% in February 2019 as compared to an increase of 1.0% in the previous month and a decrease of 0.3% in corresponding month i.e. February 2018.
2. Core inflation measured by non-food non-energy CPI (Core NFNE) increased by 8.8% on (YoY) basis in February 2019 as compared to an increase of 8.7% in the previous month and 5.2% in February 2018. On (MoM) basis, it increased by 0.2% in February 2019 as compared to an increase of 1.1% in previous month, and an increase of 0.2% in corresponding month of last year i.e. February 2018.
3. Core inflation, measured by 20% weighted trimmed mean CPI (Core Trimmed) increased by 7.7% on (YoY) basis in February 2019 as compared to 7.7% in the previous month and by 4.3% in February 2018. On (MoM) basis, it increased by 0.2% in February 2019 as compared to an increase of 1.0% in the previous month and an increase of 0.1% in corresponding month of last year i.e. February 2018.
4. The CPI by Income Quintiles and Commodity Groups for February 2019 (MoM and YoY) is placed at **Annexure-C**.
5. SPI inflation on YoY basis increased by 6.5% in February 2019 as compared to an increase of 3.7% a month earlier and an increase of 0.5% in February 2018. On MoM basis, it increased by 1.5% as compared to an increase of 0.6% in the previous month and a decrease of 1.2% in corresponding month of last year i.e. February 2018.
6. WPI inflation on YoY basis increased by 11.0% in February 2019 as compared to an increase of 9.9% a month earlier and an increase of 4.1% in February 2018. WPI inflation on MoM basis increased by 0.9% in February 2019 as compared to a decrease of 0.2% a month earlier and a decrease of 0.1% in corresponding month of last year i.e. February 2018.
7. Figures 1 and 2 show graphically the data of Table 1. Table 1.1 shows "Period Average" and "YoY" percent changes in indices of three years.

Table 1: Inflation (%) (Base 2007-08)														
Period	CPI						Core Inflation				SPI**		WPI	
	General		Food		Non-food		NFNE*		Trimmed		YoY	MoM	YoY	MoM
	YoY	MoM	YoY	MoM	YoY	MoM	YoY	MoM	YoY	MoM				
Jan-18	4.4	0.0	3.7	-1.0	4.9	0.8	5.2	0.8	4.6	0.6	2.0	-1.0	4.7	1.8
Feb-18	3.8	-0.3	2.2	-1.1	4.9	0.2	5.2	0.2	4.3	0.1	0.5	-1.2	4.1	-0.1
Mar-18	3.2	0.3	0.1	-0.3	5.4	0.7	5.8	0.7	4.1	0.2	-1.8	-0.6	3.6	0.2
Apr-18	3.7	1.8	-0.2	1.5	6.4	2.1	7.0	2.5	5.0	1.6	-0.5	0.4	4.0	1.3
May-18	4.2	0.5	1.0	1.0	6.4	0.2	7.0	0.2	5.1	0.3	0.5	0.1	5.6	1.3
Jun-18	5.2	0.6	3.0	0.8	6.7	0.4	7.1	0.3	5.4	0.2	1.9	1.8	7.6	1.5
Jul-18	5.8	0.9	3.5	0.6	7.4	1.2	7.6	1.2	5.9	0.9	3.6	1.2	10.5	2.4
Aug-18	5.8	0.2	3.3	0.2	7.6	0.2	7.7	0.2	5.9	0.2	3.3	0.2	11.0	0.8
Sep-18	5.1	-0.1	1.4	-0.7	7.7	0.3	8.0	0.4	5.8	0.1	1.0	-0.1	9.2	-1.5
Oct-18	6.8	2.3	2.7	1.9	9.6	2.6	8.2	1.1	6.7	0.8	1.3	1.1	13.1	4.2
Nov-18	6.5	0.1	1.8	-0.5	9.8	0.5	8.3	0.4	6.7	0.3	1.3	0.3	13.5	0.7
Dec-18	6.2	-0.4	0.9	-1.4	9.8	0.2	8.4	0.3	6.9	0.3	2.0	0.0	12.1	-0.9
Jan-18	7.2	1.0	2.4	0.3	10.5	1.4	8.7	1.1	7.7	1.0	3.7	0.6	9.9	-0.2
Feb-19	8.2	0.6	5.0	1.4	10.4	0.1	8.8	0.2	7.7	0.2	6.5	1.5	11.0	0.9

\*NFNE is non-food non-energy, \*\* SPI for quintile 1. Digits 0.0\* are due to rounding off.

Table 1.1 : Period Average and YoY % Changes of Indices (Base 2007-08)						
Index	Average July-February % changes			February over February % changes		
	2018-19	2017-18	2016-17	2019	2018	2017
CPI	6.46	3.84	3.90	8.21	3.80	4.22
SPI	2.81	1.31	1.20	6.50	0.54	1.15
WPI	11.30	2.58	3.46	11.03	4.08	5.27

Figure 1: CPI Inflation YoY, Special Indices

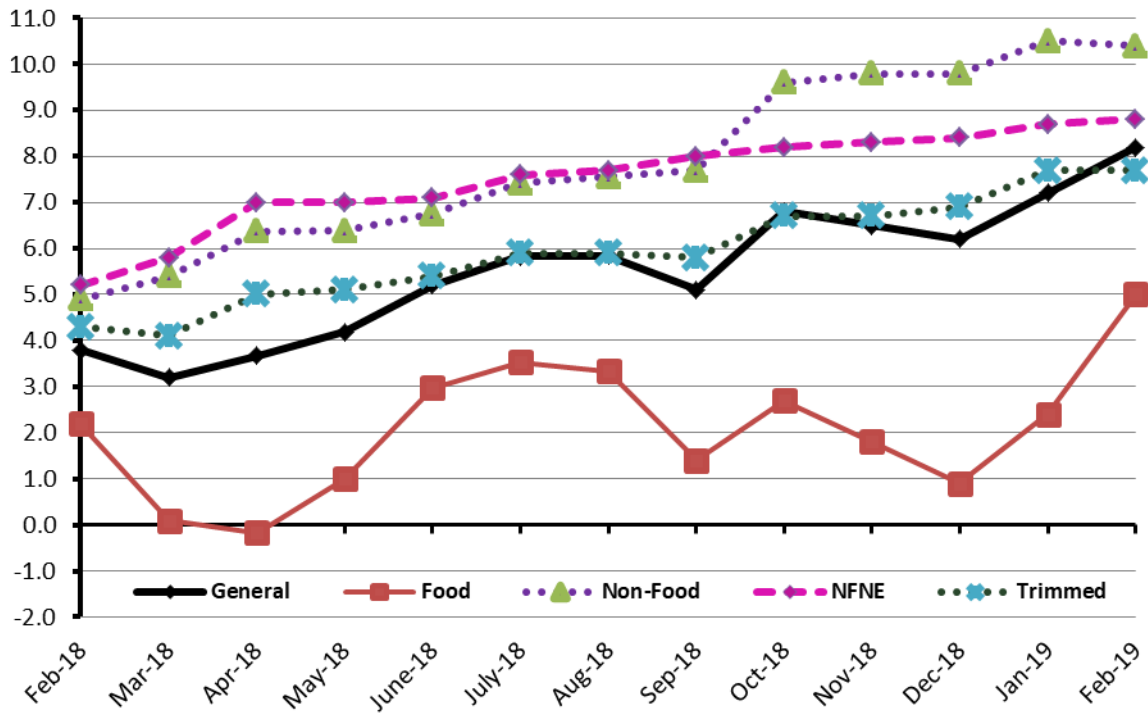
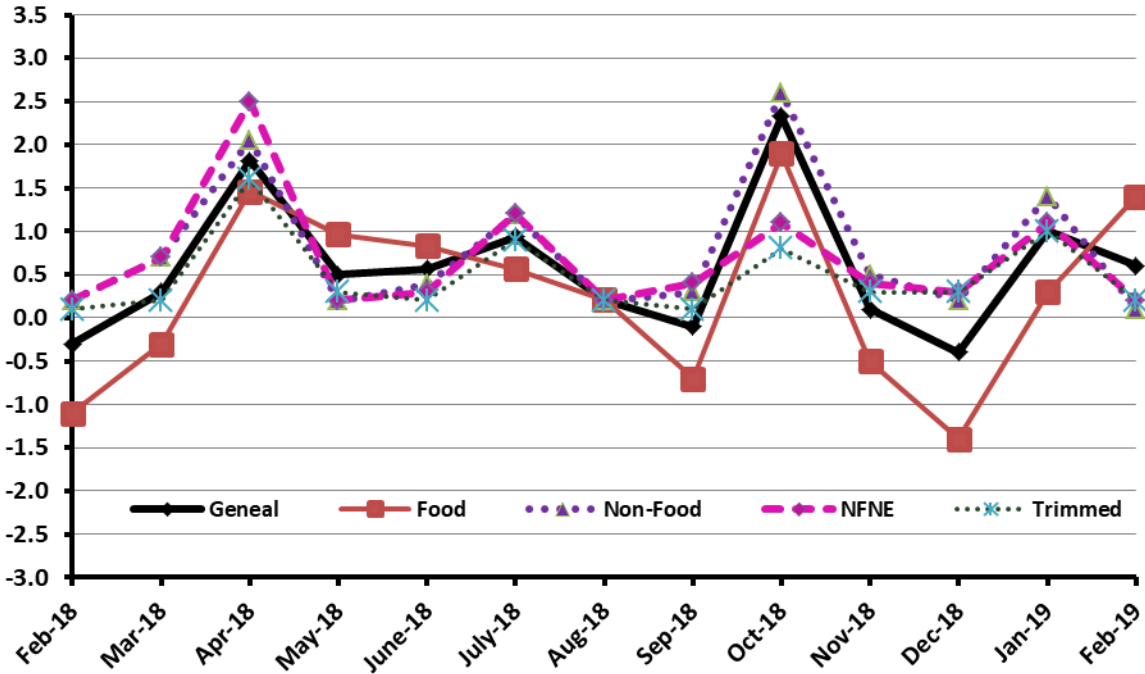


Figure 2: CPI Inflation MoM, Special Indices



## I. Consumer Price Index (CPI)

The Consumer Price Index of February 2019 is increased by 0.64% over January 2019 and increased by 8.21% over corresponding month of the last year i.e. February 2018.

**Table 2 : Consumer Price Index by Group of Commodities and Services (Base 2007-08)**

No	Group	Group Weight (%)	Indices			% Change February 2019 Over		Impact (In % points) February 2019 Over	
			Feb 2019	Jan 2019	Feb 2018	Jan 2019	Feb 2018	Jan 2019	Feb 2018
	General	100.00	237.61	236.11	219.58	0.64	8.21	0.64	8.21
1.	Food & Non-alcoholic Beverages	34.83	239.59	235.91	229.23	1.56	4.52	0.54	1.64
	<i>Non-perishable Food Items</i>	29.84	243.00	242.15	230.60	0.35	5.38	0.11	1.68
	<i>Perishable Food Items</i>	4.99	219.23	198.58	221.02	10.40	-0.81	0.44	-0.04
2.	Alcoholic Bev.& Tobacco	1.41	354.79	353.17	313.39	0.46	13.21	0.01	0.27
3.	Clothing & Footwear	7.57	261.82	261.57	245.03	0.10	6.85	0.01	0.58
4.	Housing, Water, Electricity, Gas & Fuels	29.41	226.02	226.00	202.62	0.01	11.55	0.00	3.14
5.	Furnishing & Household Equipment Maintenance	4.21	255.07	252.03	233.49	1.21	9.24	0.05	0.41
6.	Health	2.19	237.68	236.59	220.57	0.46	7.76	0.01	0.17
7.	Transport	7.20	209.05	209.96	184.47	-0.43	13.32	-0.03	0.81
8.	Communication	3.22	143.64	143.57	133.28	0.05	7.77	0.00	0.15
9.	Recreation & Culture	2.02	215.80	215.30	198.64	0.23	8.64	0.00	0.16
10.	Education	3.94	289.13	288.68	262.35	0.16	10.21	0.01	0.48
11.	Restaurants & Hotels	1.23	303.57	302.94	287.21	0.21	5.70	0.00	0.09
12.	Miscellaneous	2.76	280.40	278.61	255.22	0.64	9.87	0.02	0.32

Main contributors to month-on-month and year-on-year percentage changes are given below and detail is given in Annexure A.

1. **Month-on-month** Top few commodities which varied from previous month i.e. January 2019 are given below: -

**Food Increased:** Tomatoes (150.03%), Chicken (4.17%), Onions (3.42%), Beans (3.13%), Gur (2.27%), Fresh Fruits (2.02%), Fish (2.02%), Fresh Vegetables (1.82%), Wheat (1.43%), Milk Product (0.42%) Pulse Masoor (0.39%), Gram Whole (0.28%), Wheat Flour (0.15%) and Cooking Oil (0.14%).

**Decreased:** Potatoes (8.98%), Eggs (4.08%), Betel Leaves & Nuts (0.72%), Besan (0.53%), Pulse Mash (0.19%), Wheat Products (0.12%), Rice (0.08%) and Sugar (0.07%).

**Non-food Increased:** Household Servant (2.47%), Utensils (1.69%), Plastic Products (1.40%), Marriage Hall Charges (1.17%), Mechanical Service (1.13%), Medical Equipments (1.08%), Washing Soaps & Detergents (1.03%), Stationery (0.97%) and Motor Vehicle Accessories (0.60%).

**Decreased:** Motor Fuel (1.59%) and Kerosene Oil (0.55%).

**Year-on-Year:** Top few commodities which varied from previous year i.e. February, 2018 are given below:-

**Food Increased:** Tomatoes (179.4%), Spices (16.57%), Cigarettes (14.61%), Honey (14.24%), Sugar (13.86%), Meat (13.84%), Dry Fruits (11.75%), Tea (11.05%), Gur (10.82%), Beans (9.55%), Sweet Meat (8.11%), Milk Powder (8.07%) and Fish (7.90%).

**Decreased:** Onions (32.76%), Betel Leaves & Nuts (21.37%), Potatoes (18.71%), Chicken (11.00%), Gram Whole (6.83%), Fresh Fruits (6.52%), Fresh Vegetables (4.54%) and Pulse Mash (0.46%).

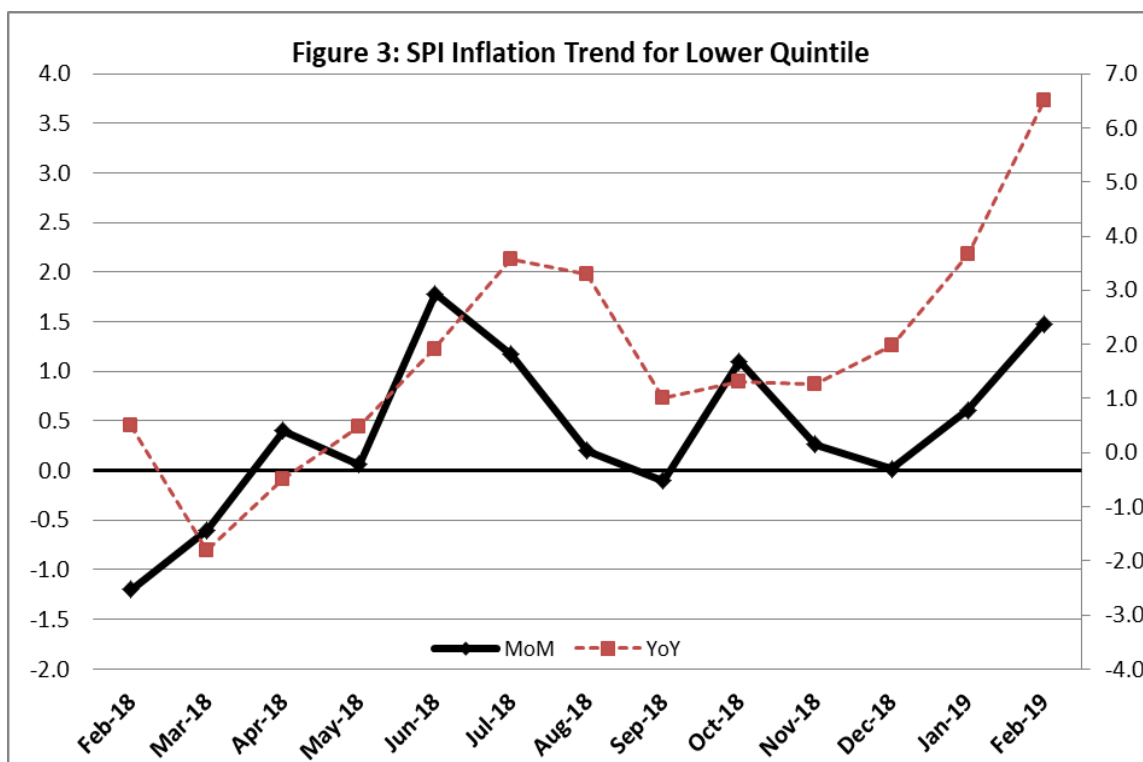
**Non-food Increased:** Gas (85.31%), Transport Services (14.77%), Motor Vehicles (13.80%), Motor Fuel (13.79%), Cosmetics (13.16%), Personal Equipment (12.7%), Utensils (12.55%), Water Supply (12.16%), Construction Input Items (11.88%), Stationery (11.82%), Kerosene Oil (11.33%), Plastic Products (11.04%), Motor Vehicle accessories (10.6%), Furniture (10.59%), Washing Soap & Detergents (10.54%), Education (10.21%), Household Servant (9.08%), Construction Wage Rates (9.02%), Electricity (8.48%) and House Rent (8.2%).

## II. Sensitive Price Indicator

Quintile-wise percentage changes YoY and MoM are given below in Table 3. The series from February 2018 to February 2019 is also graphed below in Figure 3.

Table 3: Sensitive Price Indicator (Base 2007-08)					
Quintiles	Indices			% Change February, 2019 over	
	February, 2019	January, 2019	February, 2018	January, 2019	February, 2018
1	224.32	221.05	210.63	1.48	6.50
2	233.67	230.18	218.79	1.52	6.80
3	235.48	231.83	220.43	1.57	6.83
4	249.83	244.05	225.34	2.37	10.87
5	256.43	249.19	224.04	2.91	14.46
Combined	244.35	239.07	222.19	2.21	9.97

Table 3.1 : Weekly Percentage Change of SPI During February, 2019				
Quintiles	% Change with Previous week			
	28.02.2019	21.02.2019	14.02.2019	07.02.2019
Quintile 1	0.14	0.34	0.52	0.35
Combined	0.20	0.34	0.53	0.29



### III. Wholesale Price Index

The Wholesale Price Index for February, 2019 increased by 0.90% over January, 2019. It increased by 11.03% over the corresponding month of the last year. YoY and MoM movements, from February, 2018 to February, 2019 are also graphed below in Figure 4.

**Table 4 : Wholesale Price Index by Group of Commodities (Base 2007-08)**

No.	Group	Group Weight (%)	Indices			% Change Feb, 2019 over		Impact (in %age points) Feb, 2019 over	
			Feb. 2019	Jan. 2019	Feb, 2018	Jan. 2019	Feb, 2018	Jan. 2019	Feb, 2018
	<b>General</b>	<b>100.00</b>	<b>249.44</b>	<b>247.21</b>	<b>224.66</b>	<b>0.90</b>	<b>11.03</b>	<b>0.90</b>	<b>11.03</b>
1.	Agriculture, Forestry & Fishery Products	25.77	269.34	267.58	252.97	0.66	6.47	0.18	1.88
2.	Ores & Minerals, Electricity, Gas & Water	12.04	291.06	292.15	243.39	-0.37	19.59	-0.05	2.55
3.	Food Products, Beverages & Tobacco, Textiles, Apparel & Leather Products	31.11	256.00	253.40	231.40	1.03	10.63	0.33	3.41
	i. Food Products, Bev. & Tobacco	20.07	259.45	258.87	238.10	0.22	8.97	0.05	1.91
	ii. Textiles and Apparel	10.33	245.44	241.84	220.82	1.49	11.15	0.15	1.13
	iii. Leather Products	0.71	312.14	267.09	195.77	16.87	59.44	0.13	0.37
4.	Other Transportable Goods except Metal Products, Machinery & Equipment	22.37	217.51	212.67	190.61	2.28	14.11	0.44	2.68
5.	Metal Products, Machinery & Equipment	8.72	191.60	191.48	178.47	0.06	7.36	0.00	0.51

Main contributors to month-on-month and year-on-year percentage changes are given below and detail is given in Annexure B.

1. **Month-on-month** Top few commodities which varied from previous month i.e. January, 2019 are given below:-

**Increased:** Other Leather N.E.C (33.57%), Furnace Oil (23.45%), Vegetables (9.38%), Poultry (8.81%), Fresh Fruits (5.57%), Glass Sheets (5.23%), Blended Yarn (4.78%), Hosiery Products (4.76%), Dried Fruits & Nuts (4.56%), Other Glass Articles (4.15%), Bajra (2.49%), Oil Cakes (2.03%), Maize (1.87%), Rice (1.79%), Cotton Yarn (1.68%), Motor Vehicles (1.67%), Jowar (1.65%) and Ceramics & Sanitary Fixture (1.57%).

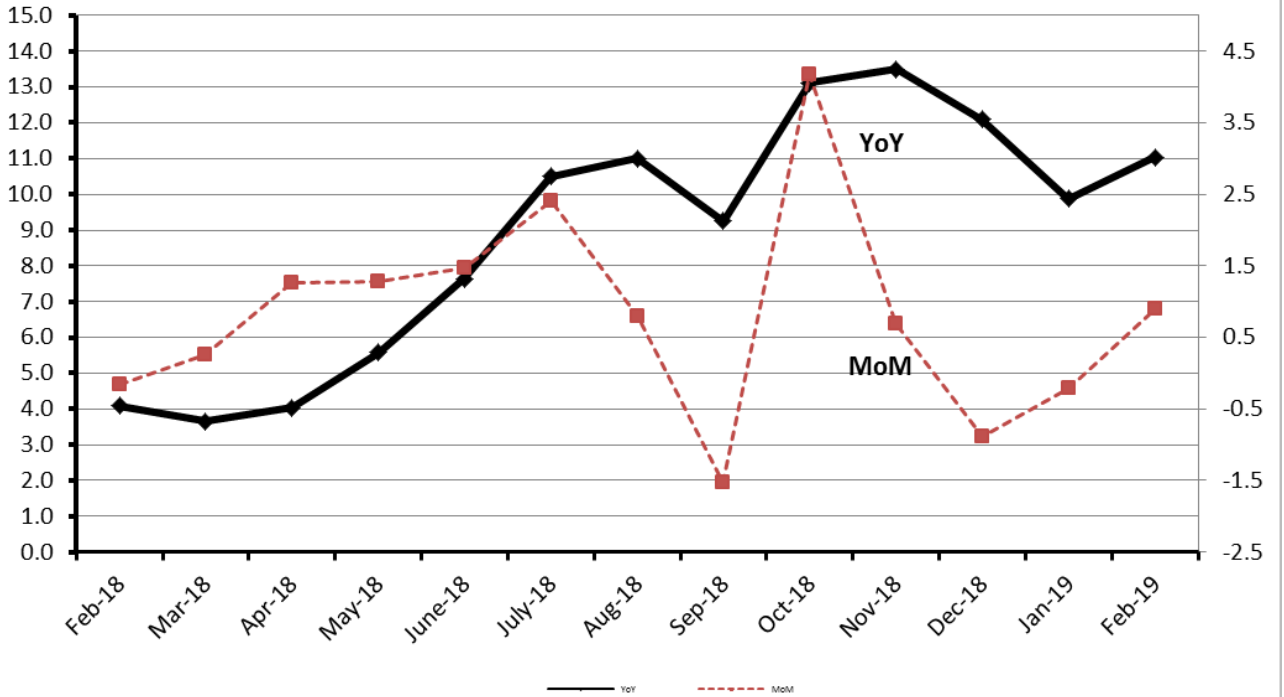
**Decreased:** Potatoes (3.00%), Eggs (2.54%), Insecticides (2.50%), Other Oil Seeds (2.00%), Dairy Products (1.96%), Bricks (1.63%), Other Cereal Flour (1.43%), Fibre Crops (1.03%), and Stimulant & Spice Crops (1.02%).

2. **Year-on-year** Top few commodities which varied from previous year i.e. February, 2018 are given below:-

**Increased:** Other Leather N.E.C (140.03%), Natural Gas Liquefied (48.96%), Hard Board (29.63%), Furnace Oil (28.72%), Jowar (27.60%), Motorcycle (26.30%), Lathe Machine (24.12%), Tobacco Products (23.69%), Fibre Crops (22.52%), Paints & Varnishes (21.01%), Steel Bars & Sheets (20.02%), Stimulant & Spice Crops (19.79%), Spices (19.33%), Fertilizers (18.77%), Chemicals (17.96%), Maize (17.53%), Sugar (17.43%), Kerosene Oil (17.38%), Bajra (16.96%), Motor Vehicles (16.55%), Cotton Yarn (15.77%), Footwears (15.52%), Auto Tyres (15.32%), Diesel (13.86%), Cement (13.63%), Meat of Animals (12.64%) and Tractors (12.48%)

**Decreased:** Potatoes (22.01%), Hides & Fur Skins (11.54%), Poultry (10.48%), Fish (3.26%) Vegetables (2.67%), Pulses (2.40%), and Electrical Energy (1.42%).

Figure 4: WPI Inflation





**Annexure – A: CPI by Commodity Groups and Commodities (2007-08=100)**

Item and Specification	Weight	Index Numbers			% Change in Feb 2019 over			
		Feb 2019	Jan 2019	Feb 2018	Jan 2019	Feb 2018		
<b><i>General</i></b>	<b>100.00</b>	<b>237.61</b>	<b>236.11</b>	<b>219.58</b>	+	<b>0.64</b>	+	<b>8.21</b>
<b><i>Food and non-alcoholic Beverages</i></b>	<b>34.834</b>	<b>239.59</b>	<b>235.91</b>	<b>229.23</b>	+	<b>1.56</b>	+	<b>4.52</b>
1 Wheat	0.3477	212.26	209.26	205.66	+	1.43	+	3.21
2 Wheat Flour	4.1648	216.91	216.59	212.84	+	0.15	+	1.91
3 Wheat Product	0.0959	218.51	218.78	214.30	-	0.12	+	1.96
4 Besan	0.1500	274.79	276.26	271.63	-	0.53	+	1.16
5 Rice	1.5821	201.45	201.61	191.61	-	0.08	+	5.14
6 Cereals	0.1563	269.41	269.22	259.02	+	0.07	+	4.01
7 Bakery & Confectionary	1.1550	233.60	232.52	224.55	+	0.46	+	4.03
8 Nimco	0.4574	263.41	261.98	257.41	+	0.55	+	2.33
9 Meat	2.4303	331.09	329.05	290.84	+	0.62	+	13.84
10 Chicken	1.3596	177.16	170.06	199.06	+	4.17	-	11.00
11 Fish	0.2970	239.46	234.73	221.93	+	2.02	+	7.90
12 Milk Fresh	6.6800	290.78	290.49	279.48	+	0.10	+	4.04
13 Milk Products	0.6338	284.16	282.97	271.59	+	0.42	+	4.63
14 Milk Powder	0.1129	257.66	256.37	238.41	+	0.50	+	8.07
15 Eggs	0.4555	228.93	238.67	213.54	-	4.08	+	7.21
16 Mustard Oil	0.0952	167.25	167.11	162.81	+	0.08	+	2.73
17 Cooking Oil	1.7538	148.19	147.98	138.56	+	0.14	+	6.95
18 Vegetable Ghee	2.0714	153.22	152.96	143.55	+	0.17	+	6.74
19 Dry Fruits	0.2543	311.34	308.91	278.60	+	0.79	+	11.75
20 Fresh Fruits	1.8649	233.39	228.77	249.68	+	2.02	-	6.52
21 Pulse Masoor	0.2712	165.53	164.88	161.17	+	0.39	+	2.71
22 Pulse Moong	0.2336	238.26	238.23	220.84	+	0.01	+	7.89
23 Pulse Mash (Washed)	0.2098	220.61	221.02	221.64	-	0.19	-	0.46
24 Pulse Gram	0.2361	283.17	282.99	264.85	+	0.06	+	6.92
25 Gram Whole	0.1616	268.30	267.54	287.97	+	0.28	-	6.83
26 Beans	0.0269	266.68	258.59	243.43	+	3.13	+	9.55
27 Potatoes	0.4452	142.26	156.30	175.00	-	8.98	-	18.71
28 Onion	0.5093	169.85	164.24	252.59	+	3.42	-	32.76
29 Tomatoes	0.4172	340.59	136.22	121.90	+	150.	+	179.40
30 Fresh Vegetables	1.7543	208.68	204.94	218.60	+	1.82	-	4.54
31 Sugar	1.0445	212.28	212.42	186.44	-	0.07	+	13.86
32 Gur	0.0220	271.58	265.55	245.06	+	2.27	+	10.82
33 Honey	0.0446	389.58	383.26	341.03	+	1.65	+	14.24
34 Sweet Meat	0.2483	277.48	275.93	256.66	+	0.56	+	8.11
35 Beverages	1.1990	234.18	233.73	226.80	+	0.19	+	3.25
36 Jam, Tomato Ketchup & Pickles	0.2454	239.50	238.45	224.88	+	0.44	+	6.50
37 Condiments	0.2656	297.84	294.79	277.53	+	1.03	+	7.32
38 Spices	0.5441	279.54	276.34	239.80	+	1.16	+	16.57
39 Tea	0.8377	319.43	318.33	287.65	+	0.35	+	11.05
<b><i>Alcoholic Beverages, Tobacco</i></b>	<b>1.4135</b>	<b>354.79</b>	<b>353.17</b>	<b>313.39</b>	+	<b>0.46</b>	+	<b>13.21</b>
40 Cigarettes	1.3906	350.86	349.14	306.13	+	0.49	+	14.61
41 Betel Leaves & Nuts	0.0229	593.36	597.65	754.58	-	0.72	-	21.37
<b><i>Clothing and footwear</i></b>	<b>7.5708</b>	<b>261.82</b>	<b>261.58</b>	<b>245.03</b>	+	<b>0.09</b>	+	<b>6.85</b>
42 Cotton Cloth	1.7286	253.46	253.16	236.48	+	0.12	+	7.18
43 Woolen Cloth	0.8759	280.51	280.30	263.65	+	0.07	+	6.39
44 Readymade Garments	0.9739	269.46	269.28	254.72	+	0.07	+	5.79
45 Woolen Readymade Garments	0.3964	289.31	289.31	266.71	+	0.00	+	8.47
46 Hosiery	0.5094	275.19	274.69	258.30	+	0.18	+	6.54

**Annexure A: CPI by Commodity Groups and Commodities (2007-08=100)**

Item and Specification	Weight	Index Numbers			% Change in Feb 2019 over		
		Feb 2019	Jan 2019	Feb 2018	Jan 2019	Feb 2018	
47 Dopatta	0.4412	272.04	271.72	254.12	+	0.12	+ 7.05
48 Cleaning and Laundry	0.2110	300.26	300.26	284.23	+	0.00	+ 5.64
49 Tailoring	0.8840	358.48	358.21	336.77	+	0.08	+ 6.45
50 Footwear	1.5504	181.10	180.90	167.82	+	0.11	+ 7.91
<b><u>Housing, water, Elec., Gas and other</u></b>	<b>29.4149</b>	<b>226.02</b>	<b>226.00</b>	<b>202.62</b>	<b>+</b>	<b>0.01</b>	<b>+ 11.55</b>
51 House Rent	21.8149	212.02	212.02	195.96	+	0.00	+ 8.20
52 Construction Input Items	0.5623	293.08	292.42	261.97	+	0.23	+ 11.88
53 Construction Wage Rates	0.3331	278.16	277.46	255.15	+	0.25	+ 9.02
54 Water Supply	0.4971	194.95	194.95	173.82	+	0.00	+ 12.16
55 Electricity	4.3985	258.28	258.28	238.10	+	0.00	+ 8.48
56 Gas	1.5756	292.94	292.94	158.08	+	0.00	+ <u>85.31</u>
57 Kerosene Oil	0.0057	274.12	275.63	246.23	-	0.55	+ 11.33
58 Firewood Whole	0.2277	305.94	305.94	301.93	+	0.00	+ 1.33
<b><u>Furnishing and household</u></b>	<b>4.2082</b>	<b>255.07</b>	<b>252.03</b>	<b>233.50</b>	<b>+</b>	<b>1.21</b>	<b>+ 9.24</b>
59 Furniture	0.3315	251.62	250.86	227.53	+	0.30	+ 10.59
60 Household Textiles	0.6489	251.59	251.22	235.96	+	0.15	+ 6.62
61 Household Equipment	0.5936	198.07	197.60	184.74	+	0.24	+ 7.22
62 Utensils	0.3212	272.66	268.14	242.26	+	1.69	+ 12.55
63 Plastic Products	0.2547	242.52	239.16	218.40	+	1.40	+ 11.04
64 Washing Soaps & Detergents	0.7893	260.03	257.38	235.23	+	1.03	+ 10.54
65 Sewing Needle & Dr Cell	0.1496	230.38	229.39	210.07	+	0.43	+ 9.67
66 Household Servant	1.0432	286.73	279.81	262.86	+	2.47	+ 9.08
67 Marriage Hall Charges	0.0762	275.23	272.06	257.76	+	1.17	+ 6.78
<b><u>Health</u></b>	<b>2.1868</b>	<b>237.67</b>	<b>236.58</b>	<b>220.58</b>	<b>+</b>	<b>0.46</b>	<b>+ 7.75</b>
68 Drugs & Medicines	1.2667	201.80	200.93	187.75	+	0.43	+ 7.48
69 Medical Equipments	0.0080	271.19	268.30	256.26	+	1.08	+ 5.83
70 Doctor (MBBS) Clinic Fee	0.5904	321.75	320.01	298.32	+	0.54	+ 7.85
71 Medical Tests	0.3217	223.77	223.06	206.26	+	0.32	+ 8.49
<b><u>Transport</u></b>	<b>7.2023</b>	<b>209.05</b>	<b>209.96</b>	<b>184.47</b>	<b>-</b>	<b>0.43</b>	<b>+ 13.32</b>
72 Motor Vehicles	0.6630	205.06	204.71	180.19	+	0.17	+ 13.80
73 Motor Vehicle Accessories	0.2439	237.99	236.56	215.18	+	0.60	+ 10.60
74 Motor Fuel	3.0269	186.52	189.53	163.92	-	1.59	+ 13.79
75 Mechanical Service	0.4552	255.38	252.53	237.06	+	1.13	+ 7.73
76 Motor Vehicle Tax	0.1099	210.18	210.18	210.18	+	0.00	+ 0.00
77 Transport Services	2.7034	224.79	224.55	195.86	+	0.11	+ 14.77
<b><u>Communication</u></b>	<b>3.2198</b>	<b>143.63</b>	<b>143.57</b>	<b>133.28</b>	<b>+</b>	<b>0.04</b>	<b>+ 7.77</b>
78 Postal Services	0.0662	272.63	272.63	255.80	+	0.00	+ 6.58
79 Communication & Apparatus	3.1536	140.93	140.86	130.71	+	0.05	+ 7.82
<b><u>Recreation and culture</u></b>	<b>2.0227</b>	<b>215.79</b>	<b>215.30</b>	<b>198.62</b>	<b>+</b>	<b>0.23</b>	<b>+ 8.64</b>
80 Recreation & Culture	0.8634	137.68	137.61	131.62	+	0.05	+ 4.60
81 Text Books	0.5706	304.92	304.92	287.98	+	0.00	+ 5.88
82 Newspapers	0.1934	235.21	235.21	186.23	+	0.00	+ 26.30
83 Stationery	0.3953	248.25	245.87	222.00	+	0.97	+ 11.82
<b><u>Education</u></b>	<b>3.9431</b>	<b>289.13</b>	<b>288.68</b>	<b>262.35</b>	<b>+</b>	<b>0.16</b>	<b>+ 10.21</b>
84 Education	3.9431	289.13	288.68	262.35	+	0.16	+ 10.21
<b><u>Restaurants and hotels</u></b>	<b>1.2286</b>	<b>303.57</b>	<b>302.94</b>	<b>287.21</b>	<b>+</b>	<b>0.21</b>	<b>+ 5.70</b>
85 Readymade Food	1.2286	303.57	302.94	287.21	+	0.21	+ 5.70
<b><u>Misc. goods and services</u></b>	<b>2.7550</b>	<b>280.40</b>	<b>278.60</b>	<b>255.21</b>	<b>+</b>	<b>0.65</b>	<b>+ 9.87</b>
86 Personal Care	1.4935	249.74	248.28	233.45	+	0.59	+ 6.98
87 Cosmetics	0.3853	233.79	232.50	206.60	+	0.55	+ 13.16
88 Blades	0.0322	217.60	217.60	201.62	+	0.00	+ 7.93
89 Personal Equipments	0.8440	358.33	355.64	317.95	+	0.76	+ 12.70

## Annexure B: Wholesale Price Indices by Major Groups &amp; Commodities

(2007-08=100)

Item and Specification	Weight	Index Numbers			% Change in Feb 2019 over			
		Feb 19	Jan 19	Feb 18	Jan 2019	Feb 2018		
<b>General</b>	<b>100.0000</b>	<b>249.44</b>	<b>247.21</b>	<b>224.66</b>	<b>+</b>	<b>0.90</b>	<b>+</b>	<b>11.03</b>
<b>Agriculture Forestry &amp; Fisher</b>	<b>25.7674</b>	<b>269.34</b>	<b>267.58</b>	<b>252.97</b>	<b>+</b>	<b>0.66</b>	<b>+</b>	<b>6.47</b>
001 Wheat	0.6297	215.86	214.48	210.64	+	0.64	+	2.48
002 Maize	0.6764	234.21	229.91	199.27	+	1.87	+	17.53
003 Rice	2.4413	194.20	190.79	174.06	+	1.79	+	11.57
004 Sorghum / Jowar	0.0214	309.61	304.58	242.65	+	1.65	+	27.60
005 Millet / Bajra	0.0374	214.73	209.51	183.60	+	2.49	+	16.96
006 Vegetables	1.2441	213.58	195.27	219.44	+	9.38	-	2.67
007 Fresh Fruits	1.5144	268.34	254.18	265.01	+	5.57	+	1.26
008 Dry Fruits	0.2478	282.99	281.40	267.56	+	0.57	+	5.77
009 Cotton Seeds	1.1511	262.82	263.05	256.23	-	0.09	+	2.57
010 Other Oil Seeds	0.0722	188.20	192.04	187.75	-	2.00	+	0.24
011 Edible Roots / Potatoes	0.2540	130.41	134.45	167.22	-	3.00	-	22.01
012 Stimulant & Spice Crops	0.1634	322.69	326.03	269.38	-	1.02	+	19.79
013 Pulses	0.4901	243.61	242.62	249.60	+	0.41	-	2.40
014 Sugar Crops	1.0725	275.85	275.85	257.62	+	0.00	+	7.08
015 Fibre Crops	5.3169	278.10	280.99	226.99	-	1.03	+	22.52
016 Unmanufactured Tobacco	0.0742	325.00	325.00	305.98	+	0.00	+	6.22
017 Poultry	0.5633	188.94	173.65	211.05	+	8.81	-	10.48
018 Raw Milk from Bovine Animals	7.0279	286.63	286.63	275.47	+	0.00	+	4.05
019 Eggs	0.5034	234.20	240.31	212.43	-	2.54	+	10.25
020 Raw Animal Materials / Wool	0.0351	190.42	190.16	173.81	+	0.14	+	9.56
021 Hides & Fur Skins, Raw	0.4834	92.90	92.92	105.02	-	0.02	-	11.54
022 Fuel Wood in Logs	0.0179	295.14	295.14	283.56	+	0.00	+	4.08
023 Fish Live Fresh or Chilled	1.7295	462.20	462.20	477.80	+	0.00	-	3.26
<b>Ores/Minerals, Elec., Gas &amp; W</b>	<b>12.0389</b>	<b>291.06</b>	<b>292.15</b>	<b>243.39</b>	<b>-</b>	<b>0.37</b>	<b>+</b>	<b>19.59</b>
024 Coal not Agglomerated	0.7508	155.29	155.29	155.29	+	0.00	+	0.00
025 Natural Gas Liquefied	5.7385	315.82	318.12	212.02	-	0.72	+	48.96
026 Salt & Pure Sodium Chloride	0.0584	275.23	275.23	264.37	+	0.00	+	4.11
027 Electrical Energy	5.4912	283.90	283.90	288.00	+	0.00	-	1.42
<b>Food, Beverages, Tobacco, Textil</b>	<b>31.1122</b>	<b>256.00</b>	<b>253.40</b>	<b>231.40</b>	<b>+</b>	<b>1.03</b>	<b>+</b>	<b>10.63</b>
<b>Food Products, Beverages &amp;</b>	<b>20.0718</b>	<b>259.45</b>	<b>258.87</b>	<b>238.10</b>	<b>+</b>	<b>0.22</b>	<b>+</b>	<b>8.97</b>
028 Meat of Animals	3.4559	350.63	349.94	311.27	+	0.20	+	12.64
029 Vegetables & Fruit Juice	0.0058	228.62	228.62	224.97	+	0.00	+	1.62
030 Dried Fruits & Nuts	0.1733	329.84	315.47	297.11	+	4.56	+	11.02
031 Fruit Juices	0.3880	188.98	188.88	182.60	+	0.05	+	3.49
032 Vegetable Oils Refined	1.9242	163.26	161.93	156.36	+	0.82	+	4.41
033 Vegetable Ghee	1.5632	136.85	136.37	126.69	+	0.35	+	8.02
034 Oil Cakes	0.9611	250.97	245.98	231.54	+	2.03	+	8.39
035 Processed Liquid Milk	4.4437	296.92	296.92	286.83	+	0.00	+	3.52
036 Milk & Cream in Solid Form	0.0316	238.50	237.78	223.55	+	0.30	+	6.69
037 Ice Cream	0.0047	287.85	286.26	266.02	+	0.56	+	8.21
038 Dairy Products N.E.C	0.0117	289.39	295.19	267.61	-	1.96	+	8.14
039 Wheat Flour	2.3034	198.07	197.43	195.72	+	0.32	+	1.20
040 Other Cereal Flour	0.0604	231.67	235.02	218.04	-	1.43	+	6.25
041 Sugar Refined	1.7975	222.13	223.07	189.16	-	0.42	+	17.43
042 Chocolate	0.0139	100.00	100.00	100.00	+	0.00	+	0.00
043 Sugar Confectionary	0.0738	127.25	127.25	127.85	+	0.00	-	0.47
044 Coffee & Tea	0.7303	287.23	288.73	261.80	-	0.52	+	9.71
045 Spices	0.1449	241.32	240.50	202.23	+	0.34	+	19.33
046 Other Food Products	0.0336	314.10	312.04	294.50	+	0.66	+	6.66
047 Mineral Water	0.0207	210.16	210.16	208.14	+	0.00	+	0.97
048 Beverages	0.6303	176.55	176.55	172.85	+	0.00	+	2.14
049 Tobacco Products	1.2998	393.80	393.80	318.37	+	0.00	+	23.69
<b>Textiles &amp; Apparels</b>	<b>10.3289</b>	<b>245.44</b>	<b>241.84</b>	<b>220.82</b>	<b>+</b>	<b>1.49</b>	<b>+</b>	<b>11.15</b>
050 Cotton Yarn	5.2491	263.36	259.02	227.49	+	1.68	+	15.77
051 Nylon Yarn	0.1719	143.99	143.99	143.99	+	0.00	+	0.00
052 Blended Yarn	0.1689	204.12	194.81	188.55	+	4.78	+	8.26
053 Woven Fabrics	0.0128	344.94	344.94	321.49	+	0.00	+	7.29
054 Cotton Fabrics	0.6343	223.85	223.30	213.18	+	0.25	+	5.01
055 Other Fabrics	1.1016	232.79	231.49	227.16	+	0.56	+	2.48
056 Silk & Reyon Fabrics	0.7350	194.81	194.26	188.14	+	0.28	+	3.55
057 Towels	0.1235	308.50	308.50	276.14	+	0.00	+	11.72

## Annexure B: Wholesale Price Indices by Major Groups &amp; Commodities

(2007-08=100)

Item and Specification	Weight	Index Numbers			% Change in Feb 2019 over	
		Feb 19	Jan 19	Feb 18	Jan 2019	Feb 2018
058 Blankets	0.0029	277.52	277.52	265.03	+ 0.00	+ 4.71
059 Bed Sheets	0.0913	269.00	268.60	256.87	+ 0.15	+ 4.72
060 Quilts	0.0019	229.26	229.26	222.32	+ 0.00	+ 3.12
061 Woolen Carpets	0.0383	196.43	196.43	196.43	+ 0.00	+ 0.00
062 Synthetic Carpets	0.0566	131.80	131.80	130.95	+ 0.00	+ 0.65
063 Hosiery Products	0.8832	266.64	254.53	244.11	+ 4.76	+ 9.23
064 Readymade Garments	1.0576	220.45	220.45	201.37	+ 0.00	+ 9.48
<b>Leather Products</b>	<b>0.7115</b>	<b>312.14</b>	<b>267.09</b>	<b>195.77</b>	<b>+ 16.87</b>	<b>+ 59.44</b>
065 Leather Without Hair	0.2973	228.93	228.93	212.68	+ 0.00	+ 7.64
066 Other Leather N.E.C	0.2567	496.90	372.02	207.02	+ 33.57	+ 140.03
067 Footwears	0.1575	168.09	168.09	145.51	+ 0.00	+ 15.52
<b>Other Transportable Goods</b>	<b>22.3659</b>	<b>217.51</b>	<b>212.67</b>	<b>190.61</b>	<b>+ 2.28</b>	<b>+ 14.11</b>
068 Timber	0.0165	244.62	244.62	237.00	+ 0.00	+ 3.22
069 Printing Paper	0.4279	174.76	174.76	168.59	+ 0.00	+ 3.66
070 Hard Board	0.1579	291.67	291.67	225.00	+ 0.00	+ 29.63
071 Coke	0.2797	163.45	163.45	163.45	+ 0.00	+ 0.00
072 Motor Spirit	1.5336	152.67	153.67	142.75	- 0.65	+ 6.95
073 Diesel Oil	5.2664	229.16	229.53	201.27	- 0.16	+ 13.86
074 Kerosine Oil	0.2151	219.79	221.58	187.24	- 0.81	+ 17.38
075 Furnace Oil	3.2664	167.71	135.85	130.29	+ 23.45	+ 28.72
076 Mobil Oil	0.7114	213.34	213.34	200.85	+ 0.00	+ 6.22
077 Chemicals	1.7720	222.04	221.33	188.23	+ 0.32	+ 17.96
078 Dyeing Material	0.1539	150.72	150.72	146.55	+ 0.00	+ 2.85
079 Fertilizers	2.8657	267.89	267.64	225.55	+ 0.09	+ 18.77
080 Pesticides	0.2763	316.64	316.64	310.16	+ 0.00	+ 2.09
081 Insecticides	0.1276	147.58	151.37	140.56	- 2.50	+ 4.99
082 Paints & Varnishes	0.1916	364.40	361.10	301.12	+ 0.91	+ 21.01
083 Medicines	1.1428	181.30	181.04	177.01	+ 0.14	+ 2.42
084 Soaps & Detergents	0.8168	200.46	200.31	191.35	+ 0.07	+ 4.76
085 Auto Tyres	0.2703	204.20	202.83	177.07	+ 0.68	+ 15.32
086 Plastic Products	0.4550	246.23	245.58	226.00	+ 0.26	+ 8.95
087 Glass sheets	0.2089	337.30	320.54	302.27	+ 5.23	+ 11.59
088 Other Glass Articles	0.1635	331.31	318.10	318.10	+ 4.15	+ 4.15
089 Ceramics & Sanitary Fixture	0.0244	249.92	246.05	234.76	+ 1.57	+ 6.46
090 Bricks, Blocks & Tiles	0.1566	228.34	232.13	223.59	- 1.63	+ 2.12
091 Cement	1.8145	238.29	238.47	209.70	- 0.08	+ 13.63
092 Bed Foam	0.0006	182.67	182.67	173.00	+ 0.00	+ 5.59
093 Matches	0.0505	172.57	172.57	171.36	+ 0.00	+ 0.71
<b>Metal Product, Machinery &amp; Eq</b>	<b>8.7156</b>	<b>191.60</b>	<b>191.48</b>	<b>178.47</b>	<b>+ 0.06</b>	<b>+ 7.36</b>
094 Pig Iron	0.0593	128.97	128.97	128.97	+ 0.00	+ 0.00
095 Steel Bar & Sheets	1.4022	173.56	172.96	144.61	+ 0.35	+ 20.02
096 Pipe Fittings	0.0780	238.51	238.51	215.66	+ 0.00	+ 10.60
097 Steel Products	0.3879	189.08	189.08	176.70	+ 0.00	+ 7.01
098 Engines & Motors	0.0046	116.98	116.98	116.98	+ 0.00	+ 0.00
099 Vacuum Pumps	0.0155	123.69	123.69	123.69	+ 0.00	+ 0.00
100 Air Conditioners	0.0049	211.33	211.33	200.10	+ 0.00	+ 5.61
101 Cultivators	0.0551	190.66	190.66	190.66	+ 0.00	+ 0.00
102 Chuff Cutter	0.1293	153.46	153.46	153.46	+ 0.00	+ 0.00
103 Tractors	0.0028	226.93	226.93	201.75	+ 0.00	+ 12.48
104 Lathe Machines	0.0525	299.21	299.21	241.06	+ 0.00	+ 24.12
105 Concrete Mixture	0.0107	138.83	138.83	138.83	+ 0.00	+ 0.00
106 Fridge,WashM,SewM,Fans,Iron	1.1645	242.23	242.23	217.87	+ 0.00	+ 11.18
107 Electric Wires	0.0912	208.22	208.22	205.92	+ 0.00	+ 1.12
108 Lighting Equipments	1.4431	174.13	174.13	171.39	+ 0.00	+ 1.60
109 Radio & Television	0.1843	140.42	140.42	140.42	+ 0.00	+ 0.00
110 Motor Vehicles	0.0244	227.69	223.94	195.36	+ 1.67	+ 16.55
111 Motorcycles	0.2570	159.20	158.63	126.05	+ 0.36	+ 26.30
112 Bicycles	3.3483	194.31	194.31	187.65	+ 0.00	+ 3.55

**Annexure – C**

**CPI by Income Quintiles and Commodity Groups (2007-08=100 February, 2019 (% change with January, 2019) MoM**

Income Quintiles	General	Food and non-alcoholic Beverages	Alcoholic Beverages, Tobacco	Clothing and footwear	Housing, water, Elec., Gas and other fuels	Furnishing and household equipment maintenance	Health	Transport	Communication	Recreation and culture	Education	Restaurants and hotels	Misc. goods and services
<b>Combine</b>	<b>0.64</b>	<b>1.56</b>	<b>0.46</b>	<b>0.10</b>	<b>0.01</b>	<b>1.21</b>	<b>0.46</b>	<b>-0.43</b>	<b>0.05</b>	<b>0.23</b>	<b>0.16</b>	<b>0.21</b>	<b>0.64</b>
Income Quintile 1	0.81	1.52	0.57	0.08	-0.01	0.87	0.43	-0.83	0.05	0.29	0.03	0.21	0.58
Income Quintile 2	0.75	1.53	0.56	0.09	0.00	0.85	0.44	-0.78	0.06	0.27	-0.01	0.20	0.60
Income Quintile 3	0.75	1.58	0.53	0.09	0.00	0.83	0.45	-0.46	0.06	0.26	-0.08	0.20	0.61
Income Quintile 4	0.68	1.60	0.50	0.09	0.00	0.86	0.45	-0.35	0.05	0.24	-0.18	0.21	0.62
Income Quintile 5	0.55	1.55	0.37	0.09	0.02	1.38	0.48	-0.42	0.04	0.20	0.29	0.21	0.67

**CPI by Income Quintiles and Commodity Groups (2007-08=100) February, 2019 (% change with February, 2018) YoY**

Income Quintiles	General	Food and non-alcoholic Beverages	Alcoholic Beverages, Tobacco	Clothing and footwear	Housing, water, Elec., Gas and other fuels	Furnishing and household equipment maintenance	Health	Transport	Communication	Recreation and culture	Education	Restaurants and hotels	Misc. goods and services
<b>Combine</b>	<b>8.21</b>	<b>4.52</b>	<b>13.21</b>	<b>6.85</b>	<b>11.55</b>	<b>9.24</b>	<b>7.76</b>	<b>13.32</b>	<b>7.77</b>	<b>8.64</b>	<b>10.21</b>	<b>5.70</b>	<b>9.87</b>
Income Quintile 1	6.03	4.17	13.96	7.10	6.69	9.81	7.64	18.96	3.70	6.94	10.30	5.14	7.95
Income Quintile 2	6.29	4.29	13.91	7.01	7.11	9.70	7.71	16.03	4.19	7.00	10.23	5.23	8.05
Income Quintile 3	6.48	4.40	13.92	6.93	7.05	9.54	7.72	14.65	4.99	7.23	10.02	5.40	8.49
Income Quintile 4	8.28	4.46	13.70	6.84	13.18	9.44	7.69	13.27	6.44	7.74	9.79	5.59	8.84
Income Quintile 5	9.82	4.75	12.38	6.76	14.90	9.08	7.81	12.83	9.14	9.90	10.34	5.88	11.15