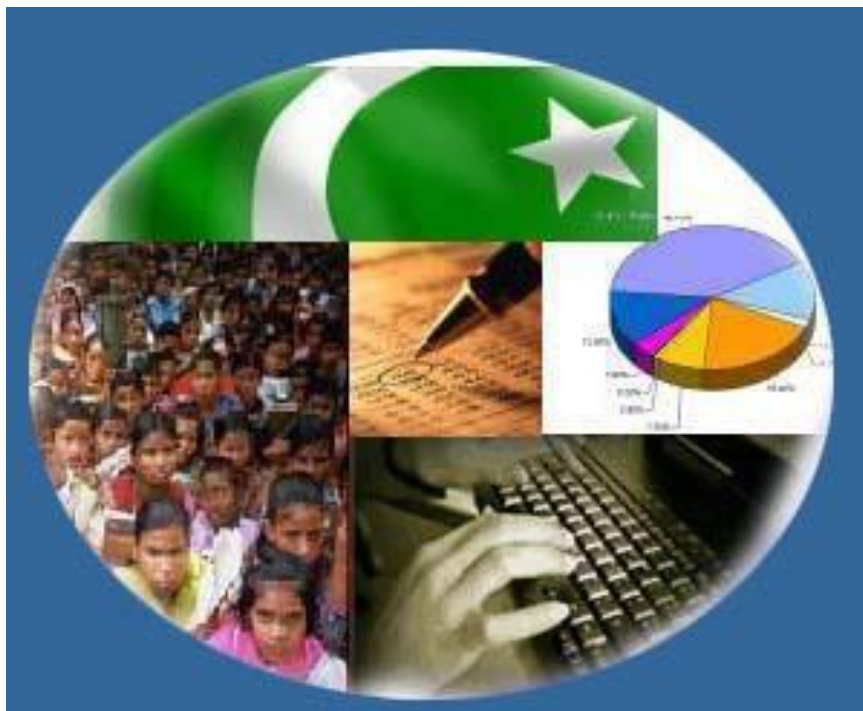




# Monthly Review on Price Indices



**January, 2018**  
**(Base 2007-08)**

**Government of Pakistan**  
**Ministry Of Statistics**  
**Pakistan Bureau of Statistics**  
**Islamabad**



## Inflation in Brief

1. CPI inflation General increased by 4.4% on year-on-year basis in January 2018 as compared to an increase of 4.6% in the previous month and 3.7% in January 2017. On month-on-month basis, it increased by 0.0% in January 2018 as compared to a decrease of 0.1% in the previous month and increase of 0.2% in January 2017.
2. Core inflation measured by non-food non-energy CPI (Core NFNE) increased by 5.2% on (YoY) basis in January 2018 as compared to an increase of 5.5% in the previous month and 5.4% in January 2017. On (MoM) basis, it increased by 0.8% in January 2018 as compared to increase of 0.2% in previous month, and an increase of 1.1% in corresponding month of last year i.e. January 2017.
3. Core inflation, measured by 20% weighted trimmed mean CPI (Core Trimmed) increased by 4.6% on (YoY) basis in January 2018 as compared to 4.7% in the previous month and by 3.8% in January 2017. On (MoM) basis, it increased by 0.6% in January 2018 as compared to an increase of 0.2% in the previous month and an increase of 0.6% in corresponding month of last year i.e. January 2017.
4. SPI inflation on YoY increased by 2.0% in January 2018 as compared to an increase of 2.2% a month earlier and an increase of 0.4% in January 2017. On MoM basis, it decreased by 1.0% in January 2018 as compared to a decrease of 0.7% a month earlier and a decrease of 0.8% in January 2017.
5. WPI inflation on YoY basis increased by 4.7% in January 2018 as compared to an increase of 3.4% a month earlier and an increase of 4.2% in January 2017. WPI inflation on MoM basis increased by 1.8% in January 2018 as compared to an increase of 0.4% a month earlier and an increase of 0.5% in corresponding month of last year i.e. January 2017.
6. Figures 1 and 2 show graphically the data of Table 1. Table 1.1 shows "Period Average" and "YoY" percent changes in indices of three years.

**Table 1: Inflation (%) (Base 2007-08)**

Period	CPI						Core Inflation				SPI**		WPI	
	General		Food		Non-food		NFNE*		Trimmed		YoY	MoM	YoY	MoM
	YoY	MoM	YoY	MoM	YoY	MoM	YoY	MoM	YoY	MoM				
Dec-16	3.7	-0.7	3.0	-1.9	4.2	0.2	5.2	0.1	3.7	0.1	0.5	-0.8	3.1	-0.1
Jan-17	3.7	0.2	2.6	-1.0	4.4	1.0	5.4	1.1	3.8	0.6	0.4	-0.8	4.2	0.5
Feb-17	4.2	0.3	3.7	0.3	4.6	0.3	5.3	0.2	4.1	0.2	1.1	0.2	5.3	0.5
Mar-17	4.9	0.8	5.0	1.9	4.9	0.1	5.3	0.1	4.5	0.2	3.1	1.8	6.4	0.7
Apr-17	4.8	1.4	4.4	1.7	5.1	1.2	5.5	1.3	4.8	0.8	2.3	-0.9	6.0	0.9
May-17	5.0	0.0	4.9	-0.2	5.1	0.2	5.5	0.2	4.8	0.2	2.4	-0.9	5.2	-0.2
Jun-17	3.9	-0.4	2.4	-1.1	5.0	0.1	5.5	0.1	4.2	0.0	1.4	0.1	3.3	-0.5
Jul-17	2.9	0.3	-0.1	0.0	5.1	0.5	5.6	0.7	4.0	0.4	-0.4	-0.5	0.7	-0.2
Aug-17	3.4	0.2	1.3	0.4	5.0	0.1	5.5	0.1	4.2	0.1	-0.1	0.5	1.0	0.3
Sep-17	3.9	0.6	2.4	1.3	4.9	0.2	5.4	0.1	4.10	0.1	1.9	2.1	1.6	0.1
Oct-17	3.8	0.7	2.2	0.6	4.9	0.8	5.3	0.9	4.0	0.6	2.1	0.9	2.3	0.6
Nov-17	4.0	0.4	2.4	0.4	5.1	0.4	5.5	0.3	4.2	0.3	2.1	0.3	2.9	0.4
Dec-17	4.6	-0.1	3.8	-0.6	5.1	0.2	5.5	0.2	4.7	0.2	2.2	-0.7	3.4	0.4
Jan-18	4.4	0.0	3.7	-1.0	4.9	0.8	5.2	0.8	4.6	0.6	2.0	-1.0	4.7	1.8

\*NFNE is non-food non-energy, \*\* SPI for quintile 1. Digits 0.0\* are due to rounding off.

**Table 1.1 : Period Average and YoY % Changes of Indices (Base 2007-08)**

Index	Averages July-January % Changes			January over January % Changes		
	2017-18	2016-17	2015-16	2018	2017	2016
CPI	3.85	3.85	2.26	4.42	3.66	3.32
SPI	1.42	1.21	0.65	1.99	0.41	3.12
WPI	2.36	3.33	-2.01	4.72	4.15	0.08

Figure 2: CPI Inflation MoM, Special Indices

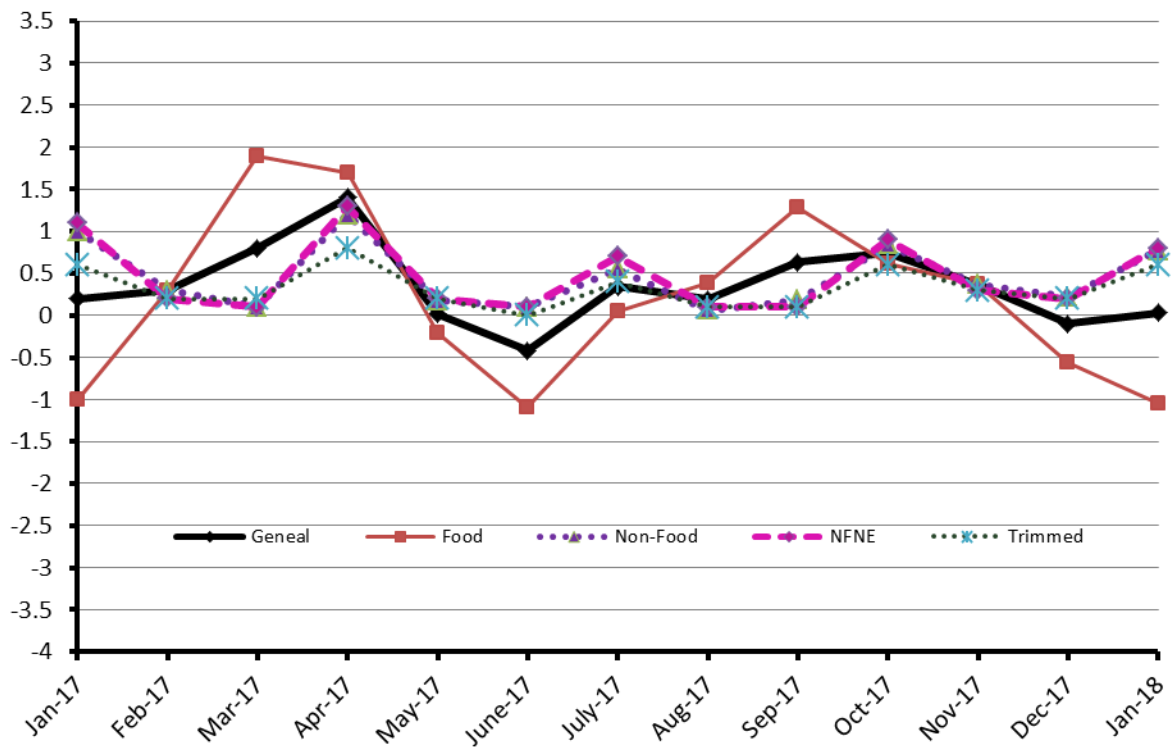
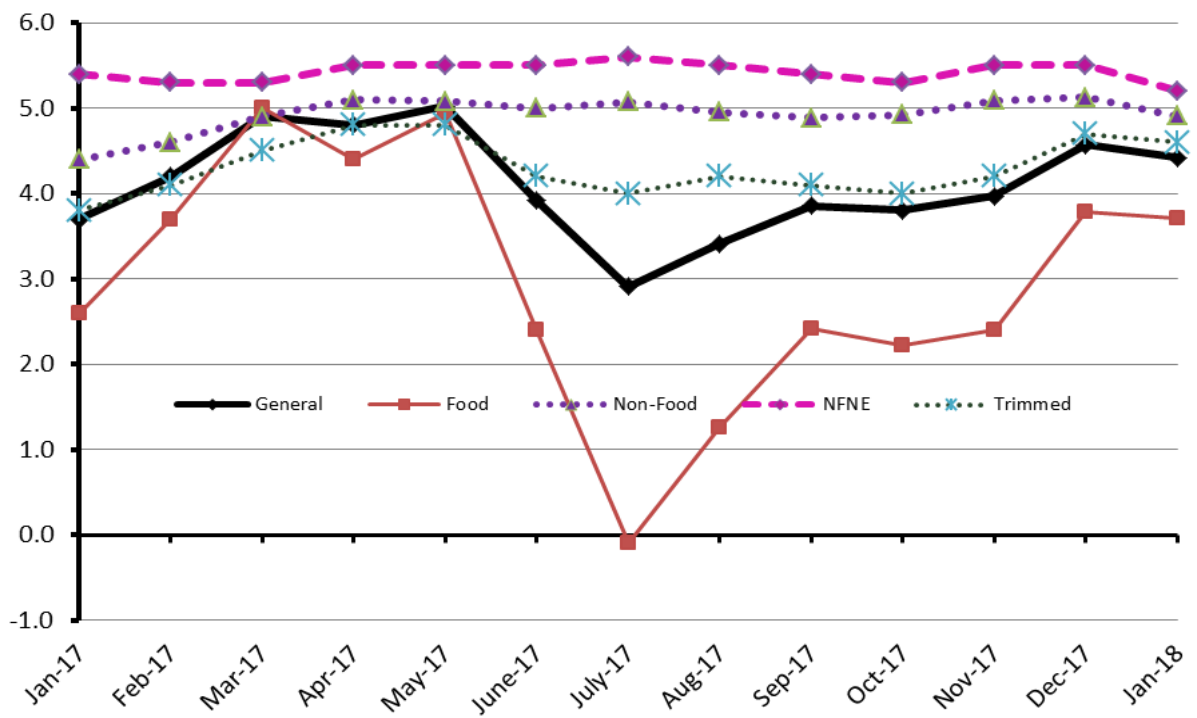


Figure 1: CPI Inflation YoY, Special Indices



## II. Consumer Price Index (CPI)

The Consumer Price Index of January 2018, is increased by 0.03% over December 2017 and increased by 4.42% over corresponding month of the last year i.e. January 2017.

**Table 2 : Consumer Price Index by Group of Commodities and Services (Base 2007-08)**

No	Group	Group Weight (%)	Indices			% Change January 2018 Over		Impact (In % points) January 2018 Over	
			Jan 2018	Dec 2017	Jan 2016	Dec 2017	Jan 2017	Dec 2017	Jan 2017
	General	<b>100.00</b>	<b>220.27</b>	<b>220.20</b>	<b>210.94</b>	<b>0.03</b>	<b>4.42</b>	<b>0.03</b>	<b>4.42</b>
1.	Food & Non-alcoholic Bev.	34.83	232.23	235.12	220.96	-1.23	5.10	-0.46	1.86
	Non-perishable Food Items	29.84	231.22	229.97	224.82	0.54	2.85	0.17	0.91
	Perishable Food Items	4.99	238.26	265.91	197.89	-10.40	20.40	-0.63	0.96
2.	Alcoholic Bev.& Tobacco	1.41	309.16	305.76	377.97	1.11	-18.21	0.02	-0.46
3.	Clothing & Footwear	7.57	244.09	241.98	234.02	0.87	4.30	0.07	0.36
4.	Housing, Water, Electricity, Gas & Fuels	29.41	202.53	201.02	194.42	0.75	4.17	0.20	1.13
5.	Furnishing & Household Equipment Maintenance	4.21	232.97	230.93	223.92	0.88	4.04	0.04	0.18
6.	Health	2.19	218.26	217.33	208.45	0.43	4.71	0.01	0.10
7.	Transport	7.20	182.63	179.67	172.81	1.65	5.68	0.10	0.34
8.	Communication	3.22	133.20	133.15	131.54	0.04	1.26	0.00	0.03
9.	Recreation & Culture	2.02	198.46	197.65	196.73	0.41	0.88	0.01	0.02
10.	Education	3.94	262.35	262.35	233.41	0.00	12.40	0.00	0.54
11.	Restaurants & Hotels	1.23	286.89	285.32	268.90	0.55	6.69	0.01	0.10
12.	Miscellaneous	2.76	255.69	253.23	238.58	0.97	7.17	0.03	0.22

Main contributors to month-on-month and year-on-year percentage changes are given below and detail is given in Annexure A.

**1. Month-on-month** Top few commodities which varied from previous month are given below:-

**Food Items Increased:** Betel Leaves & Nuts (74.01%), Chicken (9.93%), Fresh Fruits (4.62%), Rice (2.97%), Pulse Moong (2.29%), Wheat (1.41%) and Milk Products (1.00%).

**Decreased:** Tomatoes (37.23%), Potatoes (25.14%), Fresh Vegetables (13.91%), Eggs (10.71%), Onion (9.45%), Besan (1.78%), Pulse Mash (1.55%), Gur (1.24%) and Sugar (1.10%).

**Non-food Items Increased:** Kerosene Oil (5.26%), Motor Fuel (3.26%), Cleaning & Laundry (2.06%), Personal Equipments (2.05%), Readymade Garments (1.79%), Marriage Hall Charges (1.68%), Firewood Whole (1.61%), Household Servant (1.53%), Tailoring (1.32%), Hosiery (1.32%), Mechanical Service (1.27%), Motor Vehicles(1.16%), Construction Wage Rates (1.07%) and House Rent (0.98%).

**Decreased:** Woolen Readymade Garments (0.15%).

**2. Year-on-Year:** Top few commodities which varied from previous year i.e. January 2017 are given below:-

**Food Items Increased:** Onion (107.18%), Betel Leaves & Nuts (102.91%), Tomatoes (56.18%), Chicken (36.49%), Potatoes (29.32%), Rice (17.33%), Meat (8.29%), Fresh Vegetables (7.73%), Fresh Fruits (7.41%), Readymade Food (6.69%), Honey (6.66%), Tea (6.11%) and Milk Products (5.14%).

**Decreased:** Pulse Gram (27.04%), Pulse Mash (25.73%), Besan (19.76%), Cigarettes (19.48%), Pulse Masoor (18.61%), Sugar (16.97%), Pulse Moong (16.30%), Gram Whole (6.96%) and Eggs (5.67%).

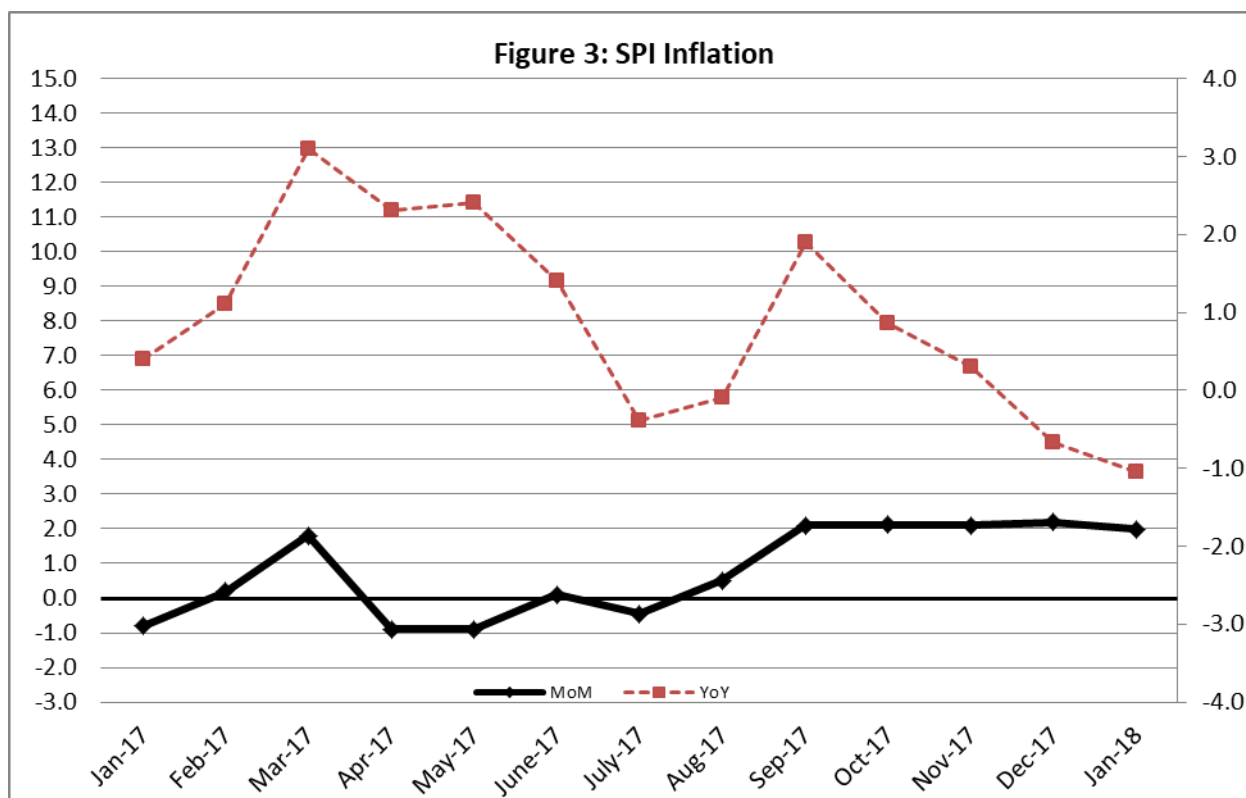
**Non-food Items Increased:** Kerosene Oil (19.58%), Motor Fuel (13.34%), Education (12.40%), Personal Equipments (10.16%), Cleaning & Laundry (8.47%), Construction Wage Rates (8.31%), Doctor MBBS Fee (7.84%), Medical Tests (7.70%), Tailoring (7.56%), Readymade Garments (6.45%), Personal Care (6.32%), House Rent (5.43%), Household Servant (5.15%) and Marriage Hall Charges (5.07%).

### III. Sensitive Price Indicator

Quintile-wise percentage changes YoY and MoM are given below in Table 3. The series from January 2017 to January 2018 is also graphed below in Figure 3.

Table 3: Sensitive Price Indicator (Base 2007-08)					
Quintiles	Indices			% Change January 2018 over	
	January 2018	December 2017	January 2017	December 2017	January 2017
1	213.22	215.47	209.06	-1.04	1.99
2	221.22	223.27	216.45	-0.92	2.20
3	222.75	224.68	217.53	-0.86	2.40
4	227.45	229.09	222.27	-0.72	2.33
5	225.47	226.47	219.39	-0.44	2.77
Combined	224.13	225.66	218.35	-0.68	2.65

Table 3.1 : Weekly Percentage Change of SPI During January-18				
Quintiles	% Change with Previous week			
	4 <sup>th</sup> Jan-2017	11 <sup>th</sup> Jan-2017	18 <sup>th</sup> Jan-2017	25 <sup>th</sup> Jan-2017
Quantile 1	-0.51	-0.22	-0.61	-0.32
Combined	-0.31	-0.23	-0.64	-0.29



## IV. Wholesale Price Index

The Wholesale Price Index for January, 2018 increased by 1.81% over December, 2017. It increased by 4.72% over the corresponding month of the last year. YoY and MoM movements, from January, 2017 to January, 2018 are also graphed below in Figure 4.

Main contributors to month-on-month and year-on-year percentage changes are given below and detail is given in Annexure B.

**Table 4 : Wholesale Price Index by Group of Commodities (Base 2007-08)**

No.	Group	Group Weight (%)	Indices			% Change January, 2018 over		Impact (in %age points) January, 2018 over	
			Jan. 2018	Dec. 2017	Jan. 2017	Dec. 2017	Jan. 2017	Dec. 2017	Jan. 2017
	<b>General</b>	<b>100.00</b>	<b>224.99</b>	<b>221.00</b>	<b>214.84</b>	<b>1.81</b>	<b>4.72</b>	<b>1.81</b>	<b>4.72</b>
1.	Agriculture, Forestry & Fishery Products	25.77	259.27	252.94	240.28	2.50	7.90	0.74	2.28
2.	Ores & Minerals, Electricity, Gas & Water	12.04	243.77	243.79	242.43	-0.01	0.55	0.00	0.07
3.	Food Products, Beverages & Tobacco, Textiles, Apparel & Leather Products	31.11	231.89	227.93	226.31	1.74	2.47	0.56	0.81
	i. Food Products, Bev. & Tobacco	20.07	238.90	238.68	238.67	0.09	0.10	0.02	0.02
	ii. Textiles and Apparel	10.33	220.77	209.26	204.12	5.50	8.16	0.54	0.80
	iii. Leather Products	0.71	195.77	195.77	199.75	0.00	-1.99	0.00	-0.01
4.	Other Transportable Goods except Metal Products, Machinery & Equipment	22.37	183.97	179.11	170.47	2.71	7.92	0.49	1.41
5.	Metal Products, Machinery & Equipment	8.72	178.30	177.80	174.43	0.28	2.22	0.02	0.16

1. **Month-on-month** Top few commodities which varied from previous month i.e. December, 2017 are given below:-

**Increased:** Fibre Crops (17.08%), Kerosene Oil (11.74%), Cotton Yarn (11.00%), Poultry (8.53%), Bajra (8.36%), Diesel (7.95%), Furnace Oil (5.94%), Jowar (5.84%), Petrol (5.24%), Fresh Fruits (4.72%), Maize (4.24%), Dry Fruits (3.28%), Rice (3.24%), Fish (2.93%), Insecticides (2.51%), Stimulant & Spice Crops (2.47%), Steel Bar & Sheets (1.90%), Dried Fruits & Nuts (1.75%), Pesticides (1.41%), Printing Paper (1.29%), Oil Cakes (1.09%), Wheat (1.07%) and Raw Milk (1.02%).

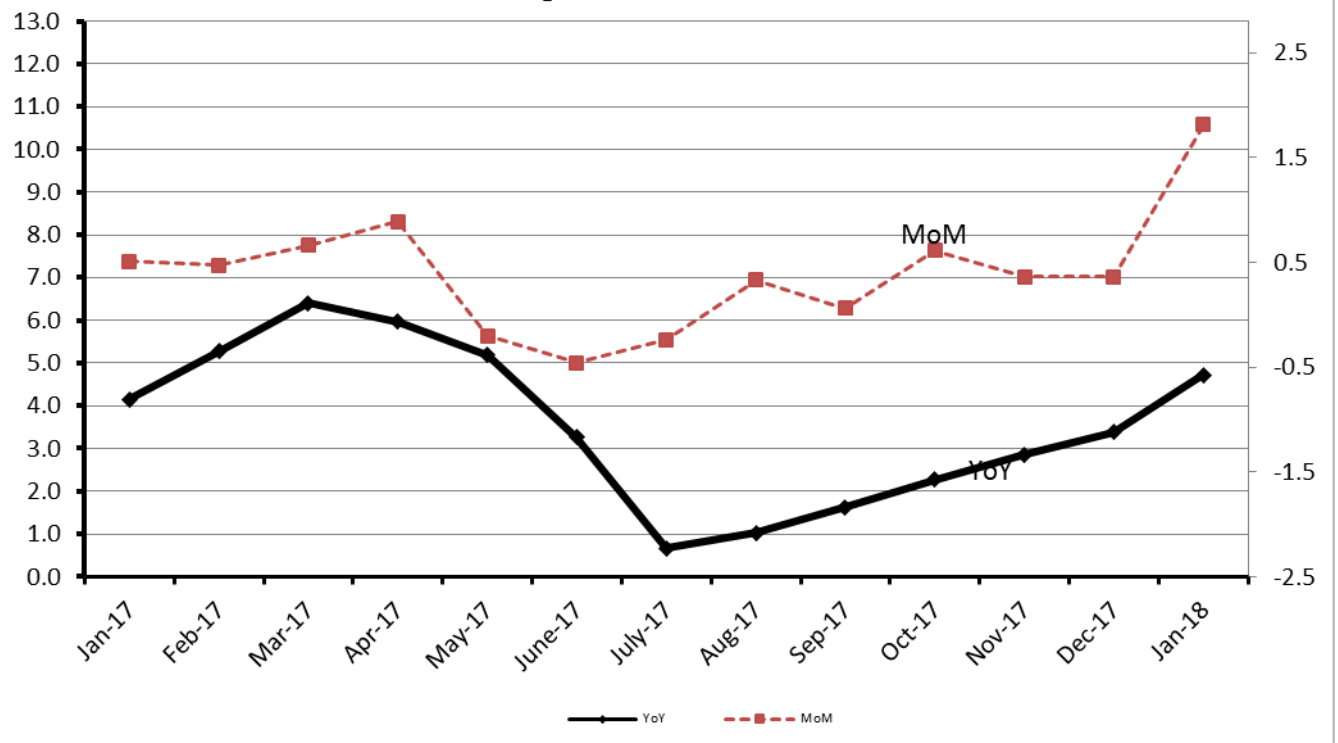
**Decreased:** Potatoes (26.73%), Vegetables (18.61%), Eggs (15.67%), Sugar (2.72%), Other Oil Seeds (2.11%) and Other Cereal Flour (1.14%).

2. **Year-on-year** Top few commodities which varied from previous year i.e. January, 2017 are given below:-

**Increased:** Kerosene Oil (48.39%), Poultry (41.15%), Vegetables (32.96%), Potatoes (26.33%), Diesel (24.29%), Stimulant & Spice Crops (22.56%), Petrol (19.74%), Fibre Crops (18.08%), Cotton Yarn (15.51%), Rice (13.94%), Steel Bar & Sheets (11.87%), Dried Fruits & Nuts (11.80%), Ice Cream (11.75%), Processed Milk (11.46%) and Unmanufactured Tobacco (11.30%).

**Decreased:** Other Cereal Flour (31.75%), Tobacco Products (28.59%), Sugar (18.32%) Pulses (14.09%) and Hides & Fur Skins (7.96%).

Figure 4: WPI Inflation





## Annexure A:CPI by Commodity Groups and Commodities (2007-08=100)

Item and Specification	Weight	Index Numbers			% Change in Jan 2018 over			
		Jan 2018	Dec 2017	Jan 2017	Dec 2017	Jan 2017		
<b><i>General</i></b>	<b>100.0000</b>	<b>220.27</b>	<b>220.20</b>	<b>210.94</b>	+	<b>0.03</b>	+	<b>4.42</b>
<b><i>Food and non-alcoholic Beverages</i></b>	<b>34.8343</b>	<b>232.23</b>	<b>235.12</b>	<b>220.96</b>	-	<b>1.23</b>	+	<b>5.10</b>
1 Wheat	0.3477	206.02	203.16	206.77	+	1.41	-	0.36
2 Wheat Flour	4.1648	212.35	212.54	213.27	-	0.09	-	0.43
3 Wheat Product	0.0959	214.91	215.00	217.11	-	0.04	-	1.01
4 Besan	0.1500	274.45	279.43	342.04	-	1.78	-	19.76
5 Rice	1.5821	190.46	184.97	162.33	+	2.97	+	17.33
6 Cereals	0.1563	257.76	257.59	253.51	+	0.07	+	1.68
7 Bakery & Confectionary	1.1550	223.47	222.54	216.35	+	0.42	+	3.29
8 Nimco	0.4574	257.77	257.02	250.60	+	0.29	+	2.86
9 Meat	2.4303	289.65	287.23	267.47	+	0.84	+	8.29
10 Chicken	1.3596	209.57	190.64	153.54	+	9.93	+	36.49
11 Fish	0.2970	221.60	219.86	218.20	+	0.79	+	1.56
12 Milk Fresh	6.6800	279.02	277.89	267.90	+	0.41	+	4.15
13 Milk Products	0.6338	271.06	268.37	257.80	+	1.00	+	5.14
14 Milk Powder	0.1129	237.95	237.44	236.11	+	0.21	+	0.78
15 Eggs	0.4555	237.31	265.77	251.58	-	10.71	-	5.67
16 Mustard Oil	0.0952	162.43	162.61	156.91	-	0.11	+	3.52
17 Cooking Oil	1.7538	138.55	138.59	135.30	-	0.03	+	2.40
18 Vegetable Ghee	2.0714	143.60	143.53	140.90	+	0.05	+	1.92
19 Dry Fruits	0.2543	277.00	274.40	265.17	+	0.95	+	4.46
20 Fresh Fruits	1.8649	235.92	225.51	219.65	+	4.62	+	7.41
21 Pulse Masoor	0.2712	163.84	163.83	201.31	+	0.01	-	18.61
22 Pulse Moong	0.2336	219.94	215.02	262.78	+	2.29	-	16.30
23 Pulse Mash (Washed)	0.2098	229.20	232.82	308.62	-	1.55	-	25.73
24 Pulse Gram	0.2361	266.59	265.48	365.37	+	0.42	-	27.04
25 Gram Whole	0.1616	292.21	294.07	314.06	-	0.63	-	6.96
26 Beans	0.0269	241.72	240.94	231.08	+	0.32	+	4.60
27 Potatoes	0.4598	215.41	287.74	166.57	-	25.14	+	29.32
28 Onion	0.5239	338.10	373.37	163.19	-	9.45	+	107.18
29 Tomatoes	0.4318	153.38	244.37	98.21	-	37.23	+	56.18
30 Fresh Vegetables	1.7105	237.87	276.29	220.80	-	13.91	+	7.73
31 Sugar	1.0445	193.08	195.22	232.55	-	1.10	-	16.97
32 Gur	0.0220	257.03	260.27	266.60	-	1.24	-	3.59
33 Honey	0.0446	340.27	339.20	319.03	+	0.32	+	6.66
34 SweetMeat	0.2483	256.43	254.71	245.95	+	0.68	+	4.26
35 Beverages	1.1990	225.95	225.93	218.57	+	0.01	+	3.38
36 Jam, Tomato Ketchup & Pickles	0.2454	224.39	223.90	216.69	+	0.22	+	3.55
37 Condiments	0.2656	276.77	274.69	265.97	+	0.76	+	4.06
38 Spices	0.5441	239.66	238.45	238.31	+	0.51	+	0.57
39 Tea	0.8377	282.72	284.22	266.44	-	0.53	+	6.11
<b><i>Alcoholic Beverages, Tobacco</i></b>	<b>1.4135</b>	<b>309.16</b>	<b>305.76</b>	<b>377.97</b>	+	<b>1.11</b>	-	<b>18.21</b>
40 Cigarettes	1.3906	306.13	306.13	380.19	+	0.00	-	19.48
41 Betel Leaves & Nuts	0.0229	493.00	283.31	242.96	+	74.01	+	102.91
<b><i>Clothing and footwear</i></b>	<b>7.5708</b>	<b>244.09</b>	<b>241.98</b>	<b>234.02</b>	+	<b>0.87</b>	+	<b>4.30</b>
42 Cotton Cloth	1.7286	235.59	234.53	225.84	+	0.45	+	4.32
43 Woolen Cloth	0.8759	262.43	259.82	254.50	+	1.00	+	3.12
44 Readymade Garments	0.9739	254.73	250.26	239.29	+	1.79	+	6.45
45 Woolen Readymade Garments	0.3964	268.07	268.48	265.41	-	0.15	+	1.00
46 Hosiery	0.5094	257.89	254.53	245.83	+	1.32	+	4.91

## Annexure A:CPI by Commodity Groups and Commodities (2007-08=100)

Item and Specification	Weight	Index Numbers			% Change in Jan 2018 over			
		Jan 2018	Dec 2017	Jan 2017	Dec 2017	Jan 2017		
47 Dopatta	0.4412	250.57	249.21	242.99	+	0.55	+	3.12
48 Cleaning and Laundry	0.2110	280.95	275.28	259.00	+	2.06	+	8.47
49 Tailoring	0.8840	333.86	329.52	310.40	+	1.32	+	7.56
50 Footwear	1.5504	167.79	167.58	166.84	+	0.13	+	0.57
<b><u>Housing, water, Elec., Gas and other fuels</u></b>	<b>29.4149</b>	<b>202.53</b>	<b>201.02</b>	<b>194.42</b>	<b>+</b>	<b>0.75</b>	<b>+</b>	<b>4.17</b>
51 House Rent	21.8149	195.96	194.05	185.86	+	0.98	+	5.43
52 Construction Input Items	0.5623	259.82	259.48	249.60	+	0.13	+	4.09
53 Construction Wage Rates	0.3331	253.90	251.20	234.42	+	1.07	+	8.31
54 Water Supply	0.4971	172.61	171.58	164.74	+	0.60	+	4.78
55 Electricity	4.3985	238.10	238.10	238.10	+	0.00	+	0.00
56 Gas	1.5756	158.08	158.08	158.08	+	0.00	+	0.00
57 Kerosene Oil	0.0057	237.33	225.46	198.47	+	5.26	+	19.58
58 Firewood Whole	0.2277	300.58	295.82	292.43	+	1.61	+	2.79
<b><u>Furnishing and household equipment</u></b>	<b>4.2082</b>	<b>232.97</b>	<b>230.93</b>	<b>223.92</b>	<b>+</b>	<b>0.88</b>	<b>+</b>	<b>4.04</b>
59 Furniture	0.3315	226.49	224.47	215.79	+	0.90	+	4.96
60 Household Textiles	0.6489	235.87	234.44	226.38	+	0.61	+	4.19
61 Household Equipment	0.5936	184.14	183.53	179.16	+	0.33	+	2.78
62 Utensils	0.3212	240.15	238.03	226.40	+	0.89	+	6.07
63 Plastic Products	0.2547	217.34	215.30	209.10	+	0.95	+	3.94
64 Washing Soaps & Detergents	0.7893	234.72	233.55	230.09	+	0.50	+	2.01
65 Sewing Needle & Dr Cell	0.1496	210.07	209.80	204.24	+	0.13	+	2.85
66 Household Servant	1.0432	262.86	258.89	249.98	+	1.53	+	5.15
67 Marriage Hall Charges	0.0762	256.32	252.09	243.95	+	1.68	+	5.07
<b><u>Health</u></b>	<b>2.1868</b>	<b>218.26</b>	<b>217.33</b>	<b>208.45</b>	<b>+</b>	<b>0.43</b>	<b>+</b>	<b>4.71</b>
68 Drugs & Medicines	1.2667	186.69	186.36	183.44	+	0.18	+	1.77
69 Medical Equipments	0.0080	255.80	255.46	248.70	+	0.13	+	2.85
70 Doctor (MBBS) Clinic Fee	0.5904	292.66	290.92	271.39	+	0.60	+	7.84
71 Medical Tests	0.3217	205.04	203.28	190.38	+	0.87	+	7.70
<b><u>Transport</u></b>	<b>7.2023</b>	<b>182.63</b>	<b>179.67</b>	<b>172.81</b>	<b>+</b>	<b>1.65</b>	<b>+</b>	<b>5.68</b>
72 Motor Vehicles	0.6630	180.02	177.95	171.79	+	1.16	+	4.79
73 Motor Vehicle Accessories	0.2439	215.23	214.92	213.33	+	0.14	+	0.89
74 Motor Fuel	3.0269	160.55	155.48	141.65	+	3.26	+	13.34
75 Mechanical Service	0.4552	236.37	233.41	228.81	+	1.27	+	3.30
76 Motor Vehicle Tax	0.1099	210.18	210.18	210.18	+	0.00	+	0.00
77 Transport Services	2.7034	194.89	193.71	193.34	+	0.61	+	0.80
<b><u>Communication</u></b>	<b>3.2198</b>	<b>133.20</b>	<b>133.15</b>	<b>131.54</b>	<b>+</b>	<b>0.04</b>	<b>+</b>	<b>1.26</b>
78 Postal Services	0.0662	254.14	253.38	245.18	+	0.30	+	3.65
79 Communication & Apparatus	3.1536	130.67	130.62	129.15	+	0.04	+	1.18
<b><u>Recreation and culture</u></b>	<b>2.0227</b>	<b>198.46</b>	<b>197.65</b>	<b>196.73</b>	<b>+</b>	<b>0.41</b>	<b>+</b>	<b>0.88</b>
80 Recreation & Culture	0.8634	131.60	130.44	129.45	+	0.89	+	1.66
81 Text Books	0.5706	287.98	287.98	292.41	+	0.00	-	1.51
82 Newspapers	0.1934	184.72	184.59	179.20	+	0.07	+	3.08
83 Stationery	0.3953	222.01	220.48	214.16	+	0.69	+	3.67
<b><u>Education</u></b>	<b>3.9431</b>	<b>262.35</b>	<b>262.35</b>	<b>233.41</b>	<b>+</b>	<b>0.00</b>	<b>+</b>	<b>12.40</b>
84 Education	3.9431	262.35	262.35	233.41	+	0.00	+	12.40
<b><u>Restaurants and hotels</u></b>	<b>1.2286</b>	<b>286.89</b>	<b>285.32</b>	<b>268.90</b>	<b>+</b>	<b>0.55</b>	<b>+</b>	<b>6.69</b>
85 Readymade Food	1.2286	286.89	285.32	268.90	+	0.55	+	6.69
<b><u>Misc. goods and services</u></b>	<b>2.7550</b>	<b>255.69</b>	<b>253.23</b>	<b>238.58</b>	<b>+</b>	<b>0.97</b>	<b>+</b>	<b>7.17</b>
86 Personal Care	1.4935	233.68	232.45	219.78	+	0.53	+	6.32
87 Cosmetics	0.3853	206.14	207.40	202.56	-	0.61	+	1.77
88 Blades	0.0322	201.35	201.21	196.34	+	0.07	+	2.55
89 Personal Equipments	0.8440	319.33	312.92	289.89	+	2.05	+	10.16

**Annexure B: Wholesale Price Indices by Major Groups & Commodities (2007-08=100)**

Item and Specification	Weight	Index Numbers			% Change in Jan 2018 over			
		Jan 18	Dec 17	Jan 17	Dec 2017	Jan 2017		
<b>General</b>	<b>100.0000</b>	<b>224.99</b>	<b>221.00</b>	<b>214.84</b>	<b>+</b>	<b>1.81</b>	<b>+</b>	<b>4.72</b>
<b>Agriculture Forestry &amp; Fisher</b>	<b>25.7674</b>	<b>259.27</b>	<b>252.94</b>	<b>240.28</b>	<b>+</b>	<b>2.50</b>	<b>+</b>	<b>7.90</b>
001 Wheat	0.6297	209.85	207.62	214.17	+	1.07	-	2.02
002 Maize	0.6764	205.68	197.32	186.37	+	4.24	+	10.36
003 Rice	2.4413	174.67	169.19	153.30	+	3.24	+	13.94
004 Sorghum / Jowar	0.0214	239.51	226.29	236.93	+	5.84	+	1.09
005 Millet / Bajra	0.0374	184.05	169.85	167.74	+	8.36	+	9.72
006 Vegetables	1.2441	270.50	332.34	203.45	-	18.61	+	32.96
007 Fresh Fruits	1.5144	242.06	231.15	221.77	+	4.72	+	9.15
008 Dry Fruits	0.2478	267.11	258.63	242.90	+	3.28	+	9.97
009 Cotton Seeds	1.1511	255.87	255.91	266.81	-	0.02	-	4.10
010 Other Oil Seeds	0.0722	190.61	194.71	189.43	-	2.11	+	0.62
011 Edible Roots / Potatoes	0.2540	216.51	295.50	171.38	-	26.73	+	26.33
012 Stimulant & Spice Crops	0.1634	271.65	265.09	221.64	+	2.47	+	22.56
013 Pulses	0.4901	252.98	254.88	294.48	-	0.75	-	14.09
014 Sugar Crops	1.0725	257.62	257.62	268.94	+	0.00	-	4.21
015 Fibre Crops	5.3169	244.64	208.95	207.18	+	17.08	+	18.08
016 Unmanufactured Tobacco	0.0742	305.98	305.98	274.91	+	0.00	+	11.30
017 Poultry	0.5633	221.99	204.55	157.27	+	8.53	+	41.15
018 Raw Milk from Bovine Animals	7.0279	275.47	272.70	268.18	+	1.02	+	2.72
019 Eggs	0.5034	237.06	281.12	257.22	-	15.67	-	7.84
020 Raw Animal Materials / Wool	0.0351	172.52	173.34	177.44	-	0.47	-	2.77
021 Hides & Fur Skins, Raw	0.4834	104.72	104.78	113.78	-	0.06	-	7.96
022 Fuel Wood in Logs	0.0179	283.56	283.56	277.01	+	0.00	+	2.36
023 Fish Live Fresh or Chilled	1.7295	478.82	465.17	446.03	+	2.93	+	7.35
<b>Ores/Minerals, Elec., Gas &amp; W</b>	<b>12.0389</b>	<b>243.77</b>	<b>243.79</b>	<b>242.43</b>	<b>-</b>	<b>0.01</b>	<b>+</b>	<b>0.55</b>
024 Coal not Agglomerated	0.7508	155.29	155.29	155.29	+	0.00	+	0.00
025 Natural Gas Liquefied	5.7385	212.87	212.93	210.29	-	0.03	+	1.23
026 Salt & Pure Sodium Chloride	0.0584	257.14	257.14	235.45	+	0.00	+	9.21
027 Electrical Energy	5.4912	288.00	288.00	288.00	+	0.00	+	0.00
<b>Food, Beverages, Tobacco, Textil</b>	<b>31.1122</b>	<b>231.89</b>	<b>227.93</b>	<b>226.31</b>	<b>+</b>	<b>1.74</b>	<b>+</b>	<b>2.47</b>
<b>Food Products, Beverages &amp;</b>	<b>20.0718</b>	<b>238.90</b>	<b>238.68</b>	<b>238.67</b>	<b>+</b>	<b>0.09</b>	<b>+</b>	<b>0.10</b>
028 Meat of Animals	3.4559	311.27	309.09	282.02	+	0.71	+	10.37
029 Vegetables & Fruit Juice	0.0058	226.05	226.05	222.28	+	0.00	+	1.70
030 Dried Fruits & Nuts	0.1733	296.20	291.10	264.94	+	1.75	+	11.80
031 Fruit Juices	0.3880	182.55	182.56	179.58	-	0.01	+	1.65
032 Vegetable Oils Refined	1.9242	155.66	154.77	152.91	+	0.58	+	1.80
033 Vegetable Ghee	1.5632	127.54	126.41	126.00	+	0.89	+	1.22
034 Oil Cakes	0.9611	231.10	228.61	230.47	+	1.09	+	0.27
035 Processed Liquid Milk	4.4437	287.08	286.83	257.57	+	0.09	+	11.46
036 Milk & Cream in Solid Form	0.0316	223.37	223.69	219.07	-	0.14	+	1.96
037 Ice Cream	0.0047	266.02	266.02	238.04	+	0.00	+	11.75
038 Dairy Products N.E.C	0.0117	267.37	266.50	254.27	+	0.33	+	5.15
039 Wheat Flour	2.3034	196.64	197.14	197.36	-	0.25	-	0.36
040 Other Cereal Flour	0.0604	217.28	219.79	318.36	-	1.14	-	31.75
041 Sugar Refined	1.7975	199.93	205.52	244.78	-	2.72	-	18.32
042 Chocolate	0.0139	100.00	100.00	100.00	+	0.00	+	0.00
043 Sugar Confectionary	0.0738	127.85	128.44	128.44	-	0.46	-	0.46
044 Coffee & Tea	0.7303	253.63	253.26	241.34	+	0.15	+	5.09
045 Spices	0.1449	202.13	202.03	190.41	+	0.05	+	6.16
046 Other Food Products	0.0336	294.50	294.50	293.85	+	0.00	+	0.22
047 Mineral Water	0.0207	208.14	208.14	198.57	+	0.00	+	4.82
048 Beverages	0.6303	172.85	172.85	172.33	+	0.00	+	0.30
049 Tobacco Products	1.2998	318.37	318.37	445.85	+	0.00	-	28.59
<b>Textiles &amp; Apparels</b>	<b>10.3289</b>	<b>220.77</b>	<b>209.26</b>	<b>204.12</b>	<b>+</b>	<b>5.50</b>	<b>+</b>	<b>8.16</b>
050 Cotton Yarn	5.2491	227.49	204.94	196.95	+	11.00	+	15.51
051 Nylon Yarn	0.1719	143.99	143.99	143.99	+	0.00	+	0.00
052 Blended Yarn	0.1689	188.55	186.96	180.91	+	0.85	+	4.22
053 Woven Fabrics	0.0128	321.49	321.49	310.72	+	0.00	+	3.47
054 Cotton Fabrics	0.6343	212.43	212.00	209.34	+	0.20	+	1.48
055 Other Fabrics	1.1016	227.16	227.16	224.40	+	0.00	+	1.23
056 Silk & Reyon Fabrics	0.7350	188.14	188.14	188.10	+	0.00	+	0.02
057 Towels	0.1235	276.14	276.14	271.17	+	0.00	+	1.83
058 Blankets	0.0029	265.03	265.03	247.52	+	0.00	+	7.07
059 Bed Sheets	0.0913	256.87	256.87	256.07	+	0.00	+	0.31

**Annexure B: Wholesale Price Indices by Major Groups & Commodities (2007-08=100)**

Item and Specification	Weight	Index Numbers			% Change in Jan 2018 over	
		Jan 18	Dec 17	Jan 17	Dec 2017	Jan 2017
060 Quilts	0.0019	222.32	222.32	203.79	+ 0.00	+ 9.09
061 Woolen Carpets	0.0383	196.43	196.43	196.43	+ 0.00	+ 0.00
062 Synthetic Carpets	0.0566	130.95	130.95	129.25	+ 0.00	+ 1.32
063 Hosiery Products	0.8832	244.11	244.11	241.83	+ 0.00	+ 0.94
064 Readymade Garments	1.0576	201.37	201.37	199.15	+ 0.00	+ 1.11
<b>Leather Products</b>	<b>0.7115</b>	<b>195.77</b>	<b>195.77</b>	<b>199.75</b>	<b>+ 0.00</b>	<b>- 1.99</b>
065 Leather Without Hair	0.2973	212.68	212.68	221.97	+ 0.00	- 4.19
066 Other Leather N.E.C	0.2567	207.02	207.02	207.31	+ 0.00	- 0.14
067 Footwears	0.1575	145.51	145.51	145.51	+ 0.00	+ 0.00
<b>Other Transportable Goods</b>	<b>22.3659</b>	<b>183.97</b>	<b>179.11</b>	<b>170.47</b>	<b>+ 2.71</b>	<b>+ 7.92</b>
068 Timber	0.0165	233.32	231.53	225.41	+ 0.77	+ 3.51
069 Printing Paper	0.4279	168.59	166.45	165.63	+ 1.29	+ 1.79
070 Hard Board	0.1579	225.00	225.00	220.83	+ 0.00	+ 1.89
071 Coke	0.2797	163.45	163.45	163.45	+ 0.00	+ 0.00
072 Motor Spirit	1.5336	137.71	130.85	115.01	+ 5.24	+ 19.74
073 Diesel Oil	5.2664	185.90	172.21	149.57	+ 7.95	+ 24.29
074 Kerosine Oil	0.2151	171.38	153.38	115.49	+ 11.74	+ 48.39
075 Furnace Oil	3.2664	116.89	110.34	108.68	+ 5.94	+ 7.55
076 Mobil Oil	0.7114	201.21	200.62	196.91	+ 0.29	+ 2.18
077 Chemicals	1.7720	182.36	182.27	177.81	+ 0.05	+ 2.56
078 Dyeing Material	0.1539	146.55	146.55	146.55	+ 0.00	+ 0.00
079 Fertilizers	2.8657	223.59	223.94	215.39	- 0.16	+ 3.81
080 Pesticides	0.2763	310.16	305.84	304.43	+ 1.41	+ 1.88
081 Insecticides	0.1276	140.56	137.12	141.62	+ 2.51	- 0.75
082 Paints & Varnishes	0.1916	299.42	299.42	296.43	+ 0.00	+ 1.01
083 Medicines	1.1428	177.01	177.01	173.72	+ 0.00	+ 1.89
084 Soaps & Detergents	0.8168	192.28	191.76	190.99	+ 0.27	+ 0.68
085 Auto Tyres	0.2703	177.07	177.07	176.87	+ 0.00	+ 0.11
086 Plastic Products	0.4550	226.00	226.00	225.73	+ 0.00	+ 0.12
087 Glass sheets	0.2089	302.27	302.27	297.20	+ 0.00	+ 1.71
088 Other Glass Articles	0.1635	318.10	318.10	306.37	+ 0.00	+ 3.83
089 Ceramics & Sanitary Fixture	0.0244	234.59	234.59	234.18	+ 0.00	+ 0.18
090 Bricks, Blocks & Tiles	0.1566	223.59	223.47	219.28	+ 0.05	+ 1.97
091 Cement	1.8145	211.23	212.17	217.11	- 0.44	- 2.71
092 Bed Foam	0.0006	172.83	171.50	168.33	+ 0.78	+ 2.67
093 Matches	0.0505	171.36	171.36	165.53	+ 0.00	+ 3.52
<b>Metal Product, Machinery &amp; Eq</b>	<b>8.7156</b>	<b>178.30</b>	<b>177.80</b>	<b>174.43</b>	<b>+ 0.28</b>	<b>+ 2.22</b>
094 Pig Iron	0.0593	128.97	128.97	128.97	+ 0.00	+ 0.00
095 Steel Bar & Sheets	1.4022	144.52	141.83	129.19	+ 1.90	+ 11.87
096 Pipe Fittings	0.0780	215.66	215.66	214.33	+ 0.00	+ 0.62
097 Steel Products	0.3879	176.70	176.70	177.41	+ 0.00	- 0.40
098 Engines & Motors	0.0046	116.98	116.98	116.98	+ 0.00	+ 0.00
099 Vacuum Pumps	0.0155	123.69	123.69	123.69	+ 0.00	+ 0.00
100 Air Conditioners	0.0049	200.10	200.10	200.10	+ 0.00	+ 0.00
101 Cultivators	0.0551	190.66	190.66	190.66	+ 0.00	+ 0.00
102 Chuff Cutter	0.1293	153.46	153.46	153.46	+ 0.00	+ 0.00
103 Tractors	0.0028	201.75	201.75	201.75	+ 0.00	+ 0.00
104 Lathe Machines	0.0525	241.06	241.06	241.06	+ 0.00	+ 0.00
105 Concrete Mixture	0.0107	138.83	138.83	138.83	+ 0.00	+ 0.00
106 Fridge,WashM,SewM,Fans,Iron	1.1645	216.72	216.72	207.15	+ 0.00	+ 4.62
107 Electric Wires	0.0912	205.92	205.92	204.51	+ 0.00	+ 0.69
108 Lighting Equipments	1.4431	171.39	170.98	170.73	+ 0.24	+ 0.39
109 Radio & Television	0.1843	140.42	140.42	140.42	+ 0.00	+ 0.00
110 Motor Vehicles	0.0244	195.36	195.36	191.39	+ 0.00	+ 2.07
111 Motorcycles	0.2570	126.05	126.05	125.89	+ 0.00	+ 0.13
112 Bicycles	3.3483	187.65	187.65	187.65	+ 0.00	+ 0.00