



Monthly Review on Price Indices



July, 2018
(Base 2007-08)

Government of Pakistan
Ministry of Statistics
Pakistan Bureau of Statistics
Islamabad

Inflation in Brief

1. CPI inflation General increased by 5.8% on year-on-year basis in July 2018 as compared to an increase of 5.2% in the previous month and 2.9% in July 2017. On month-on-month basis, it increased by 0.9% in July 2018 as compared to an increase of 0.6% in the previous month and decrease of 0.3% in July 2017.
2. Core inflation measured by non-food non-energy CPI (Core NFNE) increased by 7.6% on (YoY) basis in July 2018 as compared to an increase of 7.1% in the previous month and 5.6% in July 2017. On (MoM) basis, it increased by 1.2% in July 2018 as compared to increase of 0.3% in previous month, and an increase of 0.7% in corresponding month of last year i.e. July 2017.
3. Core inflation, measured by 20% weighted trimmed mean CPI (Core Trimmed) increased by 5.9% on (YoY) basis in July 2018 as compared to 5.4% in the previous month and by 4.0% in July 2017. On (MoM) basis, it increased by 0.9% in July 2018 as compared to an increase of 0.2% in the previous month and an increase of 0.4% in corresponding month of last year i.e. July 2017.
4. SPI inflation on YoY increased by 3.6% in July 2018 as compared to an increase of 1.9% a month earlier and a decrease of 0.4% in July 2017. On MoM basis, it increased by 1.2% in July 2018 as compared to an increase of 1.8% a month earlier and a decrease of 0.5% in July 2017.
5. WPI inflation on YoY basis increased by 10.5% in July 2018 as compared to an increase of 7.6% a month earlier and an increase of 0.7% in July 2017. WPI inflation on MoM basis increased by 2.4% in July 2018 as compared to an increase of 1.5% a month earlier and a decrease of 0.2% in corresponding month of last year i.e. July 2017.
6. Figures 1 and 2 show graphically the data of Table 1. Table 1.1 shows "Period Average" and "YoY" percent changes in indices of three years.

Figures 1 and 2 show graphically the data of Table 1. Table 1.1 shows "Period Average" and "YoY" percent changes in indices of three years.

Table 1: Inflation (%) (Base 2007-08)														
Period	CPI						Core Inflation				SPI**		WPI	
	General		Food		Non-food		NFNE*		Trimmed		YoY	MoM	YoY	MoM
	YoY	MoM	YoY	MoM	YoY	MoM	YoY	MoM	YoY	MoM				
Jun-17	3.9	-0.4	2.4	-1.1	5.0	0.1	5.5	0.1	4.2	0.0	1.4	0.1	3.3	-0.5
Jul-17	2.9	0.3	-0.1	0.0	5.1	0.5	5.6	0.7	4.0	0.4	-0.4	-0.5	0.7	-0.2
Aug-17	3.4	0.2	1.3	0.4	5.0	0.1	5.5	0.1	4.2	0.1	-0.1	0.5	1.0	0.3
Sep-17	3.9	0.6	2.4	1.3	4.9	0.2	5.4	0.1	4.1	0.1	1.9	2.1	1.6	0.1
Oct-17	3.8	0.7	2.2	0.6	4.9	0.8	5.3	0.9	4.0	0.6	2.1	0.9	2.3	0.6
Nov-17	4.0	0.4	2.4	0.4	5.1	0.4	5.5	0.3	4.2	0.3	2.1	0.3	2.9	0.4
Dec-17	4.6	-0.1	3.8	-0.6	5.1	0.2	5.5	0.2	4.7	0.2	2.2	-0.7	3.4	0.4
Jan-18	4.4	0.0	3.7	-1.0	4.9	0.8	5.2	0.8	4.6	0.6	2.0	-1.0	4.7	1.8
Feb-18	3.8	-0.3	2.2	-1.1	4.9	0.2	5.2	0.2	4.3	0.1	0.5	-1.2	4.1	-0.1
Mar-18	3.2	0.3	0.1	-0.3	5.4	0.7	5.8	0.7	4.1	0.2	-1.8	-0.6	3.6	0.2
Apr-18	3.7	1.8	-0.2	1.5	6.4	2.1	7.0	2.5	5.0	1.6	-0.5	0.4	4.0	1.3
May-18	4.2	0.5	1.0	1.0	6.4	0.2	7.0	0.2	5.1	0.3	0.5	0.1	5.6	1.3
Jun-18	5.2	0.6	3.0	0.8	6.7	0.4	7.1	0.3	5.4	0.2	1.9	1.8	7.6	1.5
Jul-18	5.8	0.9	3.5	0.6	7.4	1.2	7.6	1.2	5.9	0.9	3.6	1.2	10.5	2.4

*NFNE is non-food non-energy, ** SPI for quintile 1. Digits 0.0* are due to rounding off.

Table 1.1 : Period Average and YoY % Changes of Indices (Base 2007-08)						
Index	Average July - July % changes			July over July % changes		
	2018-19	2017-18	2016-17	2018	2017	2016
CPI	5.83	2.91	4.12	5.83	2.91	4.12
SPI	3.58	-0.40	1.72	3.58	-0.40	1.72
WPI	10.50	0.66	2.97	10.50	0.66	2.97

Figure 2: CPI Inflation MoM, Special Indices

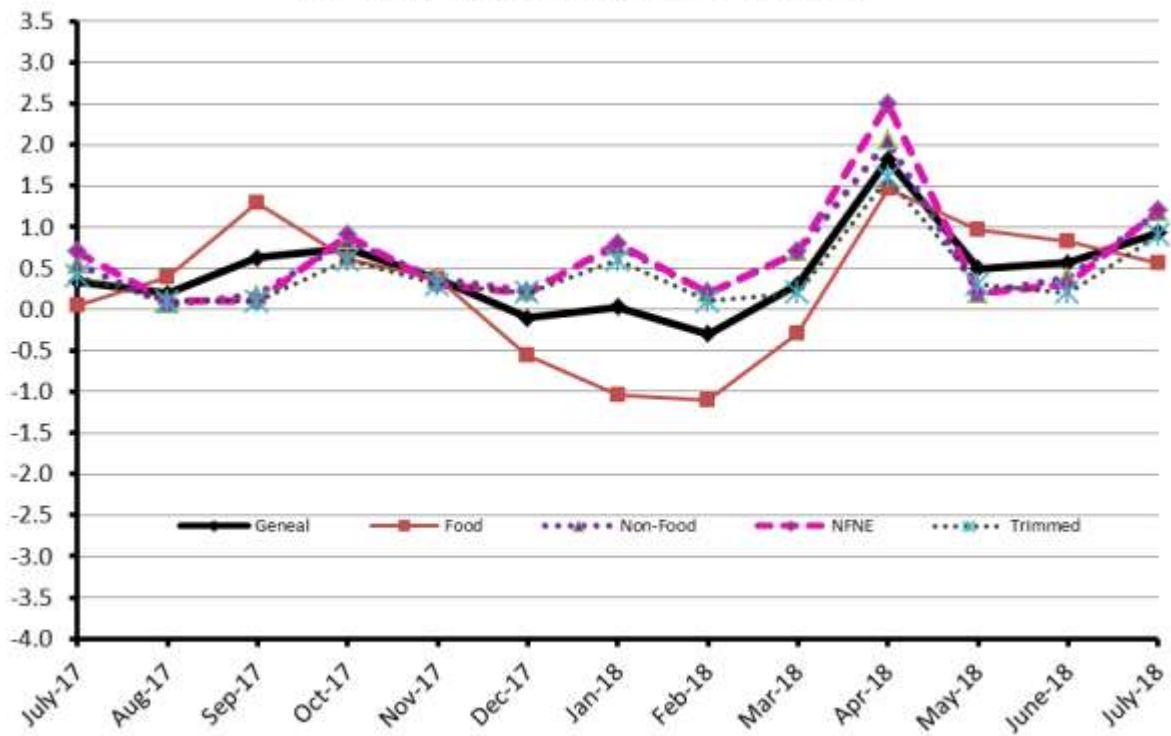
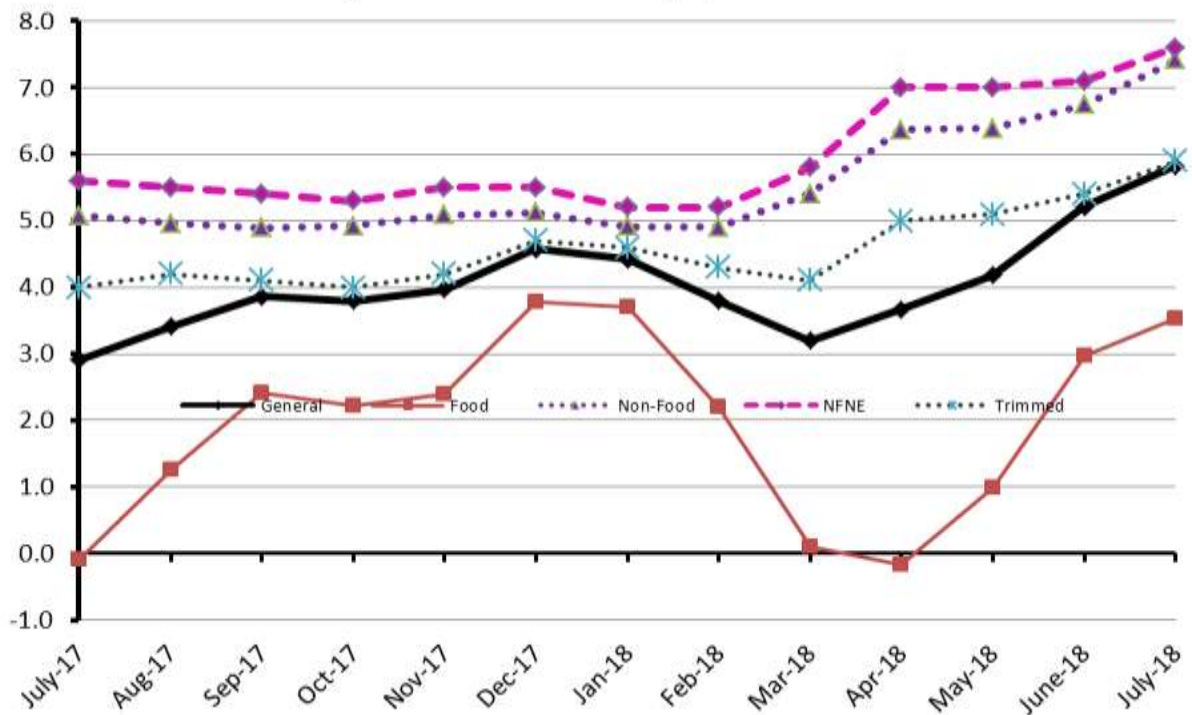


Figure 1: CPI Inflation YoY, Special Indices



II. Consumer Price Index (CPI)

The Consumer Price Index of July 2018, is increased by 0.94% over June 2018 and increased by 5.83% over corresponding month of the last year i.e. July 2017.

Table 2 : Consumer Price Index by Group of Commodities and Services (Base 2007-08)

No	Group	Group Weight (%)	Indices			% Change July 2018 Over		Impact (In % points) July 2018 Over	
			July 2018	June 2018	July 2017	June 2018	July 2017	June 2018	June 2017
	General	100.00	228.80	226.68	216.19	0.94	5.83	0.94	5.83
1.	Food & Non-alcoholic Bev.	34.83	238.08	236.58	229.99	0.63	3.52	0.23	1.30
	<i>Non-perishable Food Items</i>	<i>29.84</i>	<i>235.36</i>	<i>234.57</i>	<i>226.63</i>	<i>0.34</i>	<i>3.85</i>	<i>0.10</i>	<i>1.20</i>
	<i>Perishable Food Items</i>	<i>4.99</i>	<i>254.31</i>	<i>248.59</i>	<i>250.05</i>	<i>2.30</i>	<i>1.70</i>	<i>0.13</i>	<i>0.10</i>
2.	Alcoholic Bev. & Tobacco	1.41	313.65	314.62	306.67	-0.31	2.28	-0.01	0.05
3.	Clothing & Footwear	7.57	254.13	253.49	238.66	0.25	6.48	0.02	0.54
4.	Housing, Water, Electricity, Gas & Fuels	29.41	210.71	207.63	198.88	1.48	5.95	0.40	1.61
5.	Furnishing & Household Equipment Maintenance	4.21	241.18	240.51	227.74	0.28	5.90	0.01	0.26
6.	Health	2.19	224.67	224.36	212.91	0.14	5.52	0.00	0.12
7.	Transport	7.20	202.71	194.64	175.18	4.15	15.72	0.26	0.92
8.	Communication	3.22	133.63	133.61	132.88	0.01	0.56	0.00	0.01
9.	Recreation & Culture	2.02	208.71	208.37	196.09	0.16	6.44	0.00	0.12
10.	Education	3.94	281.89	281.89	249.54	0.00	12.96	0.00	0.59
11.	Restaurants & Hotels	1.23	293.25	292.90	278.44	0.12	5.32	0.00	0.08
12.	Miscellaneous	2.76	265.48	264.25	247.19	0.47	7.40	0.01	0.23

Main contributors to month-on-month and year-on-year percentage changes are given below and detail is given in Annexure A.

1. Month-on-month Top few commodities which varied from previous month are given below: -

Food Items Increased: Fresh Vegetables (22.98%), Tomatoes (15.63%), Eggs (12.01%), Potatoes (9.40%), Onion (6.50%), Spices (3.60%), Sugar (3.24%), Wheat (2.31%), Gur (1.99%), Pulse Moong (1.87%), Wheat Flour (1.72%), Meat (1.65%), Pulse Gram (1.47%), Pulse Masoor (1.40%) and Rice (1.14%).

Decreased: Chicken (16.91%), Fresh Fruits (15.0%), Betel Leaves & Nuts (8.91%), Pulse Mash (0.53%) and Gram Whole (0.31%).

Non-food Items Increased: Motor Fuel (5.07%), Transport Services (4.98%), Motor Vehicles (2.53%), House Rent (2.0%), Marriage Hall Charges (1.82%), Construction Input Items (1.65%), Kerosene (0.93%), Personal Equipments (0.77%), Utensils (0.60%), Cotton Cloth (0.57%) and Household Equipments (0.46%).

2. Year-on-Year Top few commodities which varied from previous year i.e. July 2017 are given below:-

Food Items Increased: Betel Leaves & Nuts (161.68%), Tomatoes (38.38%), Meat (11.03%), Dry Fruits (10.89%), Fresh Vegetables (10.60%), Onion (10.55%), Spices (9.77%), Rice (9.38%), Sweet Meat (7.78%), Fish (6.92%), Eggs (6.0%), Condiments (5.88%), Jam Tomato ketchup & Pickles (5.76%), Readymade Food (5.32%), Honey (5.04%) and Tea (4.91%).

Decreased: Pulse Mash (26.18%), Potatoes (21.89%), Pulse Masoor (11.72%), Pulse Moong (10.48%), Pulse Gram (8.71%), Besan (7.83%), Gram Whole (6.36%), Fresh Fruits (5.80%), Gur (4.35%), Sugar (1.37%), and Wheat products (0.45%).

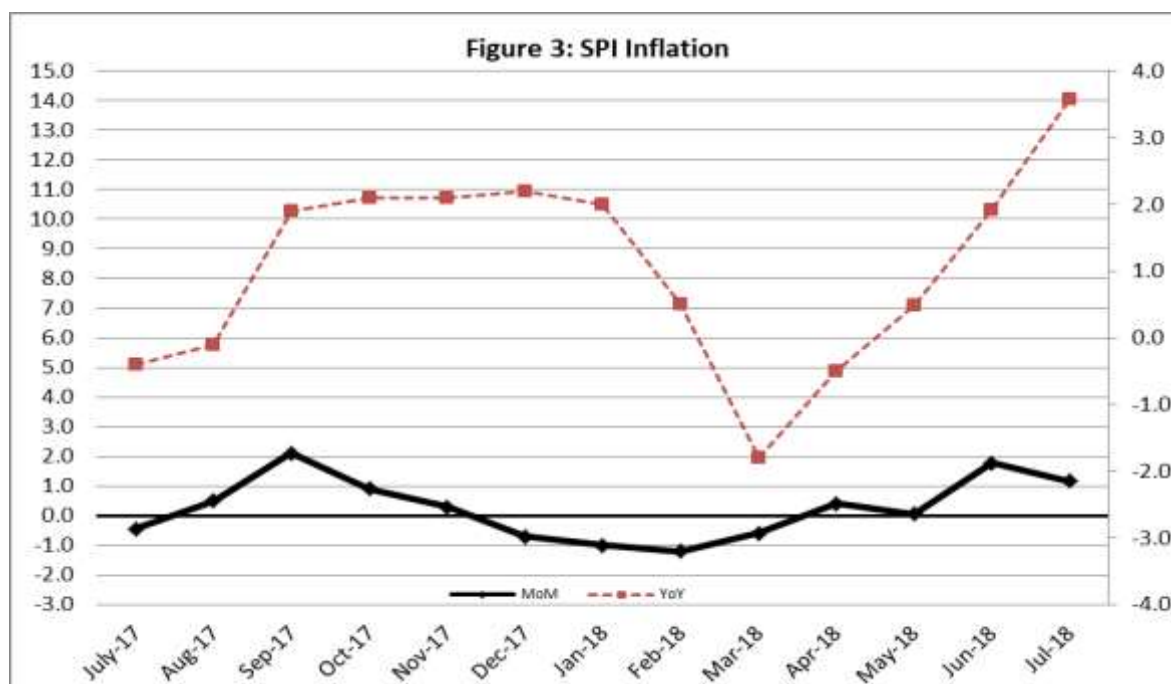
Non-food Items Increased: Kerosene Oil (36.93%), Motor Fuel (24.79%), Transport Services (13.55%), Education (12.96%), Newspapers (11.64%), Water Supply (10.21%), Personal Equipments (10.10%), Construction Wage Rates (9.46%), Motor Vehicles (9.21%), Construction Input Items (9.02%), Postal Services (8.79%), Medical Tests (8.78%), Stationary (8.58%), Cosmetics (8.55%), Utensils (8.55%), Doctor (MBBS) Clinic Fee (8.35%), Tailoring (8.30%), Furniture (7.79%) and House Rent (7.58%).

III. Sensitive Price Indicator

Quintile-wise percentage changes YoY and MoM are given below in Table 3. The series from July 2017 to July 2018 is also graphed below in Figure 3.

Table 3: Sensitive Price Indicator (Base 2007-08)					
Quintiles	Indices			% Change July, 2018 over	
	July, 2018	June, 2018	July, 2017	June, 2018	July, 2017
1	216.24	213.74	208.76	1.17	3.58
2	224.93	223.04	216.83	0.85	3.74
3	226.95	225.46	218.32	0.66	3.95
4	232.27	231.26	223.29	0.44	4.02
5	231.79	231.08	220.70	0.31	5.02
Combined	229.18	228.00	219.28	0.52	4.51

Table 3.1 : Weekly Percentage Change of SPI During June, 2018				
Quintiles	% Change with Previous week			
	5 th Jul-2018	12 th Jul-2018	19 th Jul-2018	26 th Jul-2018
Quintile 1	-0.23	-0.22	0.08	0.34
Combined	-0.06	-0.58	-0.04	0.21



IV. Wholesale Price Index

The Wholesale Price Index for July, 2018 increased by 2.41% over June, 2018. It increased by 10.50% over the corresponding month of the last year. YoY and MoM movements, from July, 2017 to July, 2018 are also graphed below in Figure 4.

Table 4 : Wholesale Price Index by Group of Commodities (Base 2007-08)									
No.	Group	Group Weight (%)	Indices			% Change July, 2018 over		Impact (in %age points) July, 2018 over	
			July, 2018	June, 2018	July, 2017	June, 2018	July, 2017	June, 2018	July, 2017
	General	100.00	240.04	234.40	217.24	2.41	10.50	2.41	10.50
1.	Agriculture, Forestry & Fishery Products	25.77	274.85	266.18	251.74	3.26	9.18	0.95	2.74
2.	Ores & Minerals, Electricity, Gas & Water	12.04	243.17	243.23	241.76	-0.02	0.58	0.00	0.08
3.	Food Products, Beverages & Tobacco, Textiles, Apparel & Leather Products	31.11	243.73	238.47	224.20	2.21	8.71	0.70	2.80
	i. Food Products, Bev. & Tobacco	246.87	243.87	233.42	1.23	5.76	0.26	1.24	1.19
	ii. Textiles and Apparel	240.60	230.57	207.97	4.35	15.69	0.44	1.55	1.05
	iii. Leather Products	200.77	200.77	199.75	0.00	0.51	0.00	0.00	0.00
4.	Other Transportable Goods except Metal Products, Machinery & Equipment	22.37	214.04	206.51	170.61	3.65	25.46	0.72	4.47
5.	Metal Products, Machinery & Equipment	8.72	186.28	185.32	176.14	0.52	5.76	0.04	0.41

Main contributors to month-on-month and year-on-year percentage changes are given below and detail is given in Annexure B.

3. **Month-on-month** Top few commodities which varied from previous month i.e. June, 2018 are given below:-

Increased: Vegetables (39.67%), Eggs (14.11%), Bajra (12.64%), Fibre Crops (11.70%), Paints & Varnishes (8.95%), Pipe Fittings (8.73%), Potatoes (8.70%), Cotton Yarns (8.10%), Diesel (7.27%), Petrol (5.89%), Jowar (5.28%), Furnace Oil (5.13%), Maize (4.10%), Stimulant & Spice Crops (3.87%), Sugar (3.62%), Motor Vehicles (3.37%), Steel Bar & Sheets (2.85%), Wheat (2.80%), Unmanufactured Tobacco (2.63%), Oil Cakes (2.54%), Chemicals (2.50%), Cement (2.21%), Hide & Fur Skins (2.17%), Other Oil Seeds (2.08%), Kerosene Oil (1.85%), Fertilizers (1.74%), Rice and Insecticides (1.55%) each, Meat (1.49%), Mobil Oil (1.34%), Processed liquid Milk (1.30%) and Wheat Flour (1.09%).

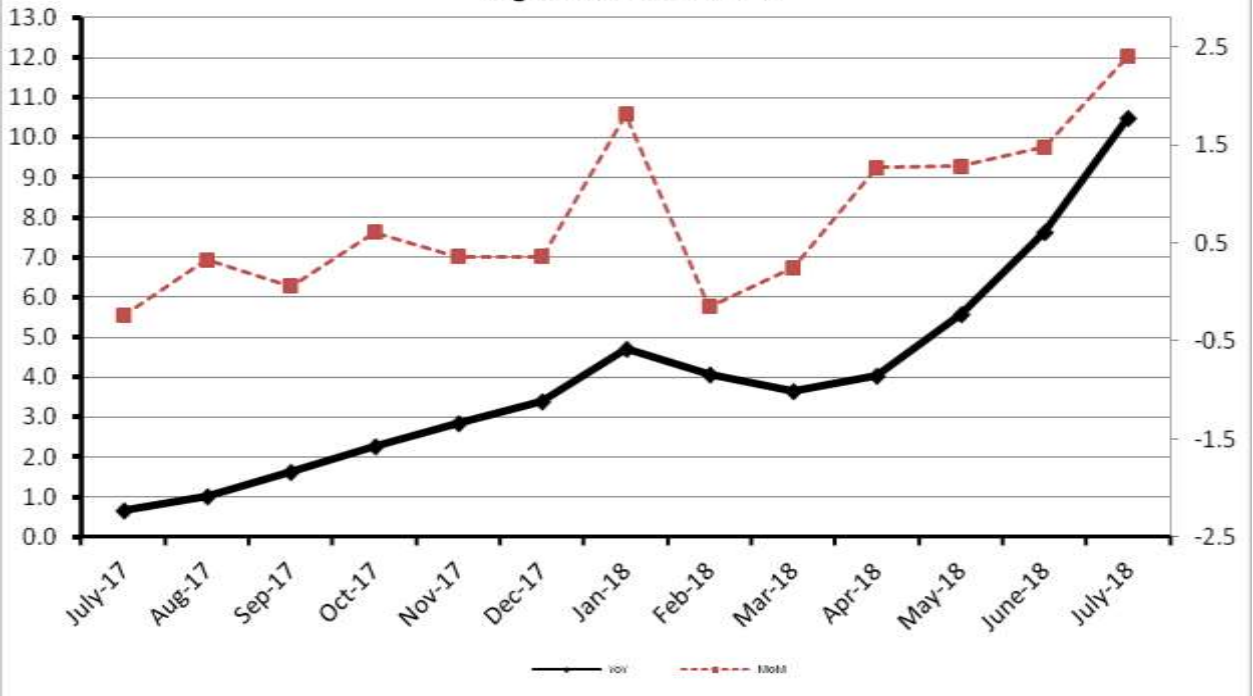
Decreased: Maize (4.79%), Eggs (3.15%) and Cotton Seeds (2.17%).

4. **Year-on-year** Top few commodities which varied from previous year i.e. June, 2017 are given below: -

Increased: Kerosene Oil (95.53%), Furnace Oil (75.86%), Diesel (59.16%), Bajra (51.99%), Jowar (43.23%), Petrol (36.60%), Fibre Crops (32.97%), Stimulant & Spice Crops (31.22%), Cotton Yarn (29.52%), Steel Bar & Sheets (23.43%), Vegetables (21.61%), Dry Fruits (20.57%), Hard Board (17.93%), Maize (16.19%), Footwears (15.52%), Meat (14.30%), Paints & Varnishes (12.78%), Eggs (12.11%), Motor Vehicles (11.65%), Dried Fruits & Nuts (11.21%). Salt & Pure Sodium Chloride (11.11%), Towels (10.64%) and Chemicals (10.44%).

Decreased: Potatoes (28.99%), Pulses (10.99%). Other Cereal Flour (9.03%) and Hides & Fur Skins (5.57%).

Figure 4: WPI Inflation



Annexure A:CPI by Commodity Groups and Commodities (2007-08=100)

Item and Specification	Weight	Index Numbers			% Change in July 2018 over			
		Jul 2018	Jun 2018	Jul 2017	June 2018	July 2017		
<i>General</i>	100.0000	228.80	226.68	216.19	+	0.94	+	5.83
<i>Food and non-alcoholic Beverages</i>	34.8343	238.08	236.58	229.99	+	0.63	+	3.52
1 Wheat	0.3477	198.49	194.00	191.16	+	2.31	+	3.83
2 Wheat Flour	4.1648	211.75	208.16	204.66	+	1.72	+	3.46
3 Wheat Product	0.0959	213.01	212.75	213.98	+	0.12	-	0.45
4 Besan	0.1500	261.62	260.94	283.83	+	0.26	-	7.83
5 Rice	1.5821	195.96	193.75	179.16	+	1.14	+	9.38
6 Cereals	0.1563	263.90	263.90	255.20	+	0.00	+	3.41
7 Bakery & Confectionary	1.1550	228.08	226.64	218.39	+	0.64	+	4.44
8 Nimco	0.4574	260.65	259.97	255.18	+	0.26	+	2.14
9 Meat	2.4303	309.43	304.41	278.70	+	1.65	+	11.03
10 Chicken	1.3596	191.31	230.25	190.36	-	16.9	+	0.50
11 Fish	0.2970	228.91	228.77	214.09	+	0.06	+	6.92
12 Milk Fresh	6.6800	285.71	283.79	275.62	+	0.68	+	3.66
13 Milk Products	0.6338	277.00	275.29	264.40	+	0.62	+	4.77
14 Milk Powder	0.1129	244.99	244.05	234.53	+	0.39	+	4.46
15 Eggs	0.4555	204.79	182.83	193.19	+	12.0	+	6.00
16 Mustard Oil	0.0952	164.01	163.47	159.87	+	0.33	+	2.59
17 Cooking Oil	1.7538	140.90	140.80	138.25	+	0.07	+	1.92
18 Vegetable Ghee	2.0714	146.78	146.24	142.80	+	0.37	+	2.79
19 Dry Fruits	0.2543	293.12	291.36	264.33	+	0.60	+	10.89
20 Fresh Fruits	1.8649	267.66	314.88	284.14	-	15.0	-	5.80
21 Pulse Masoor	0.2712	157.67	155.50	178.60	+	1.40	-	11.72
22 Pulse Moong	0.2336	218.06	214.05	243.58	+	1.87	-	10.48
23 Pulse Mash (Washed)	0.2098	206.51	207.61	279.76	-	0.53	-	26.18
24 Pulse Gram	0.2361	257.38	253.65	281.95	+	1.47	-	8.71
25 Gram Whole	0.1616	269.64	270.48	287.96	-	0.31	-	6.36
26 Beans	0.0269	244.74	244.55	242.51	+	0.08	+	0.92
27 Potatoes	0.4598	204.11	186.58	261.30	+	9.40	-	21.89
28 Onion	0.5239	200.99	188.72	181.81	+	6.50	+	10.55
29 Tomatoes	0.4318	178.46	154.34	128.96	+	15.6	+	38.38
30 Fresh Vegetables	1.7105	290.45	236.17	262.61	+	22.9	+	10.60
31 Sugar	1.0445	197.72	191.51	200.46	+	3.24	-	1.37
32 Gur	0.0220	249.15	244.30	260.49	+	1.99	-	4.35
33 Honey	0.0446	348.07	346.18	331.37	+	0.55	+	5.04
34 SweetMeat	0.2483	271.48	270.86	251.88	+	0.23	+	7.78
35 Beverages	1.1990	233.36	232.53	226.09	+	0.36	+	3.22
36 Jam, Tomato Ketchup & Pickles	0.2454	231.54	230.49	218.93	+	0.46	+	5.76
37 Condiments	0.2656	285.60	284.91	269.74	+	0.24	+	5.88
38 Spices	0.5441	259.44	250.42	236.34	+	3.60	+	9.77
39 Tea	0.8377	306.22	304.69	291.89	+	0.50	+	4.91
<i>Alcoholic Beverages, Tobacco</i>	1.4135	313.65	314.62	306.67	-	0.31	+	2.28
40 Cigarettes	1.3906	307.93	307.85	307.56	+	0.03	+	0.12
41 Betel Leaves & Nuts	0.0229	661.19	725.90	252.67	-	8.91	+	161.68
<i>Clothing and footwear</i>	7.5708	254.13	253.49	238.66	+	0.25	+	6.48
42 Cotton Cloth	1.7286	247.24	245.84	232.33	+	0.57	+	6.42
43 Woolen Cloth	0.8759	266.09	265.97	256.60	+	0.05	+	3.70
44 Readymade Garments	0.9739	264.02	263.47	247.08	+	0.21	+	6.86
45 Woolen Readymade Garments	0.3964	266.61	266.61	258.31	+	0.00	+	3.21
46 Hosiery	0.5094	265.98	265.52	248.56	+	0.17	+	7.01

Annexure A:CPI by Commodity Groups and Commodities (2007-08=100)

Item and Specification	Weight	Index Numbers			% Change in July 2018 over		
		Jul 2018	Jun 2018	Jul 2017	June 2018	July 2017	
47 Dopatta	0.4412	263.12	262.16	246.51	+	0.37	+ 6.74
48 Cleaning and Laundry	0.2110	290.77	290.46	270.83	+	0.11	+ 7.36
49 Tailoring	0.8840	349.59	348.45	322.81	+	0.33	+ 8.30
50 Footwear	1.5504	179.77	179.75	167.43	+	0.01	+ 7.37
<u>Housing, water, Elec., Gas and other</u>	29.4149	210.71	207.63	198.88	+	1.48	+ 5.95
51 House Rent	21.8149	206.00	201.96	191.49	+	2.00	+ 7.58
52 Construction Input Items	0.5623	276.97	272.48	254.05	+	1.65	+ 9.02
53 Construction Wage Rates	0.3331	265.71	265.67	242.75	+	0.02	+ 9.46
54 Water Supply	0.4971	189.09	189.09	171.58	+	0.00	+ 10.21
55 Electricity	4.3985	238.10	238.10	238.10	+	0.00	+ 0.00
56 Gas	1.5756	158.08	158.08	158.08	+	0.00	+ 0.00
57 Kerosene Oil	0.0057	272.04	269.54	198.67	+	0.93	+ 36.93
58 Firewood Whole	0.2277	298.03	298.03	290.72	+	0.00	+ 2.51
<u>Furnishing and household</u>	4.2082	241.18	240.51	227.74	+	0.28	+ 5.90
59 Furniture	0.3315	236.67	235.86	219.56	+	0.34	+ 7.79
60 Household Textiles	0.6489	243.00	242.51	229.70	+	0.20	+ 5.79
61 Household Equipment	0.5936	190.99	190.12	182.79	+	0.46	+ 4.49
62 Utensils	0.3212	252.51	251.00	232.63	+	0.60	+ 8.55
63 Plastic Products	0.2547	225.98	225.46	211.07	+	0.23	+ 7.06
64 Washing Soaps & Detergents	0.7893	241.08	240.20	232.61	+	0.37	+ 3.64
65 Sewing Needle & Dr Cell	0.1496	219.36	219.11	207.74	+	0.11	+ 5.59
66 Household Servant	1.0432	271.59	271.59	254.90	+	0.00	+ 6.55
67 Marriage Hall Charges	0.0762	266.62	261.86	248.67	+	1.82	+ 7.22
<u>Health</u>	2.1868	224.67	224.36	212.91	+	0.14	+ 5.52
68 Drugs & Medicines	1.2667	190.05	189.52	185.10	+	0.28	+ 2.67
69 Medical Equipments	0.0080	260.09	260.09	251.81	+	0.00	+ 3.29
70 Doctor (MBBS) Clinic Fee	0.5904	304.41	304.41	280.95	+	0.00	+ 8.35
71 Medical Tests	0.3217	213.79	213.70	196.54	+	0.04	+ 8.78
<u>Transport</u>	7.2023	202.71	194.64	175.18	+	4.15	+ 15.72
72 Motor Vehicles	0.6630	192.28	187.53	176.06	+	2.53	+ 9.21
73 Motor Vehicle Accessories	0.2439	216.65	216.26	211.42	+	0.18	+ 2.47
74 Motor Fuel	3.0269	182.00	173.22	145.84	+	5.07	+ 24.79
75 Mechanical Service	0.4552	244.59	244.37	231.88	+	0.09	+ 5.48
76 Motor Vehicle Tax	0.1099	210.18	210.18	210.18	+	0.00	+ 0.00
77 Transport Services	2.7034	219.83	209.41	193.59	+	4.98	+ 13.55
<u>Communication</u>	3.2198	133.63	133.61	132.88	+	0.01	+ 0.56
78 Postal Services	0.0662	272.45	272.45	250.44	+	0.00	+ 8.79
79 Communication & Apparatus	3.1536	130.72	130.70	130.41	+	0.02	+ 0.24
<u>Recreation and culture</u>	2.0227	208.71	208.37	196.09	+	0.16	+ 6.44
80 Recreation & Culture	0.8634	134.65	134.21	129.20	+	0.33	+ 4.22
81 Text Books	0.5706	304.43	304.43	287.98	+	0.00	+ 5.71
82 Newspapers	0.1934	202.94	202.94	181.78	+	0.00	+ 11.64
83 Stationery	0.3953	235.12	234.35	216.54	+	0.33	+ 8.58
<u>Education</u>	3.9431	281.89	281.89	249.54	+	0.00	+ 12.96
84 Education	3.9431	281.89	281.89	249.54	+	0.00	+ 12.96
<u>Restaurants and hotels</u>	1.2286	293.25	292.90	278.44	+	0.12	+ 5.32
85 Readymade Food	1.2286	293.25	292.90	278.44	+	0.12	+ 5.32
<u>Misc. goods and services</u>	2.7550	265.48	264.25	247.19	+	0.47	+ 7.40
86 Personal Care	1.4935	239.94	239.22	228.11	+	0.30	+ 5.19
87 Cosmetics	0.3853	222.96	222.58	205.40	+	0.17	+ 8.55
88 Blades	0.0322	204.43	204.05	197.80	+	0.19	+ 3.35
89 Personal Equipments	0.8440	332.42	329.88	301.92	+	0.77	+ 10.10

Annexure B: Wholesale Price Indices by Major Groups & Commodities

(2007-08=100)

Item and Specification	Weight	Index Numbers			% Change in Jul 2018 over			
		Jul 18	Jun 18	Jul 17	Jun 2018	Jul 2017		
General	100.0000	240.04	234.40	217.24	+	2.41	+	10.50
Agriculture Forestry & Fisher	25.7674	274.85	266.18	251.74	+	3.26	+	9.18
001 Wheat	0.6297	202.51	197.00	196.73	+	2.80	+	2.94
002 Maize	0.6764	218.34	209.74	187.91	+	4.10	+	16.19
003 Rice	2.4413	181.75	178.97	167.90	+	1.55	+	8.25
004 Sorghum / Jowar	0.0214	305.26	289.95	213.13	+	5.28	+	43.23
005 Millet / Bajra	0.0374	244.12	216.72	160.62	+	12.64	+	51.99
006 Vegetables	1.2441	347.33	248.68	285.60	+	39.67	+	21.61
007 Fresh Fruits	1.5144	328.17	375.03	309.25	-	12.50	+	6.12
008 Dry Fruits	0.2478	285.82	287.26	237.06	-	0.50	+	20.57
009 Cotton Seeds	1.1511	267.32	267.32	280.36	+	0.00	-	4.65
010 Other Oil Seeds	0.0722	193.29	189.36	182.82	+	2.08	+	5.73
011 Edible Roots / Potatoes	0.2540	194.26	178.71	273.56	+	8.70	-	28.99
012 Stimulant & Spice Crops	0.1634	318.90	307.03	243.03	+	3.87	+	31.22
013 Pulses	0.4901	236.97	238.72	266.22	-	0.73	-	10.99
014 Sugar Crops	1.0725	257.62	257.62	268.94	+	0.00	-	4.21
015 Fibre Crops	5.3169	271.84	243.36	204.44	+	11.70	+	32.97
016 Unmanufactured Tobacco	0.0742	317.53	309.38	290.76	+	2.63	+	9.21
017 Poultry	0.5633	203.33	251.13	201.12	-	19.03	+	1.10
018 Raw Milk from Bovine Animals	7.0279	284.87	283.49	268.56	+	0.49	+	6.07
019 Eggs	0.5034	214.76	188.20	191.56	+	14.11	+	12.11
020 Raw Animal Materials / Wool	0.0351	176.84	176.84	173.80	+	0.00	+	1.75
021 Hides & Fur Skins, Raw	0.4834	97.06	95.00	102.78	+	2.17	-	5.57
022 Fuel Wood in Logs	0.0179	283.56	283.56	279.63	+	0.00	+	1.41
023 Fish Live Fresh or Chilled	1.7295	451.22	451.10	463.98	+	0.03	-	2.75
Ores/Minerals, Elec., Gas & W	12.0389	243.17	243.23	241.76	-	0.02	+	0.58
024 Coal not Agglomerated	0.7508	155.29	155.29	155.29	+	0.00	+	0.00
025 Natural Gas Liquefied	5.7385	211.49	211.61	208.82	-	0.06	+	1.28
026 Salt & Pure Sodium Chloride	0.0584	269.74	269.74	242.77	+	0.00	+	11.11
027 Electrical Energy	5.4912	288.00	288.00	288.00	+	0.00	+	0.00
Food, Beverages, Tobacco, Textil	31.1122	243.73	238.47	224.20	+	2.21	+	8.71
Food Products, Beverages &	20.0718	246.87	243.87	233.42	+	1.23	+	5.76
028 Meat of Animals	3.4559	336.15	331.21	294.10	+	1.49	+	14.30
029 Vegetables & Fruit Juice	0.0058	226.66	226.66	223.38	+	0.00	+	1.47
030 Dried Fruits & Nuts	0.1733	298.38	296.19	268.30	+	0.74	+	11.21
031 Fruit Juices	0.3880	186.08	185.75	181.83	+	0.18	+	2.34
032 Vegetable Oils Refined	1.9242	159.08	158.88	155.56	+	0.13	+	2.26
033 Vegetable Ghee	1.5632	130.51	129.89	126.24	+	0.48	+	3.38
034 Oil Cakes	0.9611	242.30	236.30	229.39	+	2.54	+	5.63
035 Processed Liquid Milk	4.4437	293.74	289.96	279.71	+	1.30	+	5.02
036 Milk & Cream in Solid Form	0.0316	224.54	223.82	221.77	+	0.32	+	1.25
037 Ice Cream	0.0047	266.02	266.02	266.02	+	0.00	+	0.00
038 Dairy Products N.E.C	0.0117	278.41	279.94	269.53	-	0.55	+	3.29
039 Wheat Flour	2.3034	191.95	189.88	188.03	+	1.09	+	2.08
040 Other Cereal Flour	0.0604	215.20	215.32	236.55	-	0.06	-	9.03
041 Sugar Refined	1.7975	207.93	200.66	203.39	+	3.62	+	2.23
042 Chocolate	0.0139	100.00	100.00	100.00	+	0.00	+	0.00
043 Sugar Confectionary	0.0738	127.25	127.55	128.44	-	0.24	-	0.93
044 Coffee & Tea	0.7303	277.31	275.43	261.18	+	0.68	+	6.18
045 Spices	0.1449	202.35	202.25	189.72	+	0.05	+	6.66
046 Other Food Products	0.0336	294.50	294.50	294.01	+	0.00	+	0.17
047 Mineral Water	0.0207	211.50	211.50	199.51	+	0.00	+	6.01
048 Beverages	0.6303	172.63	173.22	172.92	-	0.34	-	0.17
049 Tobacco Products	1.2998	318.37	318.37	318.37	+	0.00	+	0.00
Textiles & Apparels	10.3289	240.60	230.57	207.97	+	4.35	+	15.69
050 Cotton Yarn	5.2491	262.52	242.86	202.68	+	8.10	+	29.52
051 Nylon Yarn	0.1719	143.99	143.99	143.99	+	0.00	+	0.00
052 Blended Yarn	0.1689	197.90	196.66	182.65	+	0.63	+	8.35
053 Woven Fabrics	0.0128	321.49	321.49	316.28	+	0.00	+	1.65
054 Cotton Fabrics	0.6343	220.60	220.18	211.33	+	0.19	+	4.39
055 Other Fabrics	1.1016	227.85	227.85	227.16	+	0.00	+	0.30
056 Silk & Reyon Fabrics	0.7350	188.81	189.05	188.89	-	0.13	-	0.04
057 Towels	0.1235	305.52	305.52	276.14	+	0.00	+	10.64
058 Blankets	0.0029	265.03	265.03	247.52	+	0.00	+	7.07
059 Bed Sheets	0.0913	256.87	256.87	256.87	+	0.00	+	0.00

Annexure B: Wholesale Price Indices by Major Groups & Commodities

(2007-08=100)

Item and Specification	Weight	Index Numbers			% Change in Jul 2018 over	
		Jul 18	Jun 18	Jul 17	Jun 2018	Jul 2017
060 Quilts	0.0019	222.32	222.32	208.42	+ 0.00	+ 6.67
061 Woolen Carpets	0.0383	196.43	196.43	196.43	+ 0.00	+ 0.00
062 Synthetic Carpets	0.0566	130.95	130.95	130.95	+ 0.00	+ 0.00
063 Hosiery Products	0.8832	250.36	250.36	243.31	+ 0.00	+ 2.90
064 Readymade Garments	1.0576	204.85	204.85	201.37	+ 0.00	+ 1.73
Leather Products	0.7115	200.77	200.77	199.75	+ 0.00	+ 0.51
065 Leather Without Hair	0.2973	212.68	212.68	221.97	+ 0.00	- 4.19
066 Other Leather N.E.C	0.2567	207.02	207.02	207.31	+ 0.00	- 0.14
067 Footwears	0.1575	168.09	168.09	145.51	+ 0.00	+ 15.52
Other Transportable Goods	22.3659	214.04	206.51	170.61	+ 3.65	+ 25.46
068 Timber	0.0165	237.00	237.00	231.53	+ 0.00	+ 2.36
069 Printing Paper	0.4279	171.65	171.07	166.11	+ 0.34	+ 3.34
070 Hard Board	0.1579	260.42	260.42	220.83	+ 0.00	+ 17.93
071 Coke	0.2797	163.45	163.45	163.45	+ 0.00	+ 0.00
072 Motor Spirit	1.5336	164.49	155.34	120.42	+ 5.89	+ 36.60
073 Diesel Oil	5.2664	244.20	227.66	153.43	+ 7.27	+ <u>59.16</u>
074 Kerosine Oil	0.2151	229.00	224.83	117.12	+ 1.85	+ <u>95.53</u>
075 Furnace Oil	3.2664	171.20	162.84	97.35	+ 5.13	+ <u>75.86</u>
076 Mobil Oil	0.7114	206.18	203.46	201.29	+ 1.34	+ 2.43
077 Chemicals	1.7720	196.45	191.65	177.88	+ 2.50	+ 10.44
078 Dyeing Material	0.1539	150.72	150.72	146.55	+ 0.00	+ 2.85
079 Fertilizers	2.8657	236.33	232.29	215.02	+ 1.74	+ 9.91
080 Pesticides	0.2763	312.32	312.26	306.06	+ 0.02	+ 2.05
081 Insecticides	0.1276	144.49	142.29	139.64	+ 1.55	+ 3.47
082 Paints & Varnishes	0.1916	332.15	304.87	294.51	+ 8.95	+ 12.78
083 Medicines	1.1428	177.70	177.06	174.14	+ 0.36	+ 2.04
084 Soaps & Detergents	0.8168	191.52	190.80	191.20	+ 0.38	+ 0.17
085 Auto Tyres	0.2703	177.14	177.14	177.07	+ 0.00	+ 0.04
086 Plastic Products	0.4550	240.35	240.04	225.88	+ 0.13	+ 6.41
087 Glass sheets	0.2089	304.55	302.27	298.97	+ 0.75	+ 1.87
088 Other Glass Articles	0.1635	318.10	318.10	317.24	+ 0.00	+ 0.27
089 Ceramics & Sanitary Fixture	0.0244	236.54	236.41	232.65	+ 0.05	+ 1.67
090 Bricks, Blocks & Tiles	0.1566	223.37	222.34	221.24	+ 0.46	+ 0.96
091 Cement	1.8145	237.45	232.31	220.11	+ 2.21	+ 7.88
092 Bed Foam	0.0006	175.33	175.33	170.33	+ 0.00	+ 2.94
093 Matches	0.0505	171.36	171.36	171.36	+ 0.00	+ 0.00
Metal Product, Machinery & Eq	8.7156	186.28	185.32	176.14	+ 0.52	+ 5.76
094 Pig Iron	0.0593	128.97	128.97	128.97	+ 0.00	+ 0.00
095 Steel Bar & Sheets	1.4022	169.64	164.94	137.44	+ 2.85	+ 23.43
096 Pipe Fittings	0.0780	234.48	215.66	215.66	+ 8.73	+ 8.73
097 Steel Products	0.3879	177.24	177.24	177.56	+ 0.00	- 0.18
098 Engines & Motors	0.0046	116.98	116.98	116.98	+ 0.00	+ 0.00
099 Vacuum Pumps	0.0155	123.69	123.69	123.69	+ 0.00	+ 0.00
100 Air Conditioners	0.0049	203.80	203.80	200.10	+ 0.00	+ 1.85
101 Cultivators	0.0551	190.66	190.66	190.66	+ 0.00	+ 0.00
102 Chuff Cutter	0.1293	153.46	153.46	153.46	+ 0.00	+ 0.00
103 Tractors	0.0028	216.82	216.82	201.75	+ 0.00	+ 7.47
104 Lathe Machines	0.0525	241.06	241.06	241.06	+ 0.00	+ 0.00
105 Concrete Mixture	0.0107	138.83	138.83	138.83	+ 0.00	+ 0.00
106 Fridge,WashM,SewM,Fans,Iron	1.1645	228.73	228.70	214.93	+ 0.01	+ 6.42
107 Electric Wires	0.0912	208.22	208.22	205.92	+ 0.00	+ 1.12
108 Lighting Equipments	1.4431	174.04	174.04	170.73	+ 0.00	+ 1.94
109 Radio & Television	0.1843	140.42	140.42	140.42	+ 0.00	+ 0.00
110 Motor Vehicles	0.0244	218.11	211.00	195.36	+ 3.37	+ 11.65
111 Motorcycles	0.2570	134.21	133.88	125.89	+ 0.25	+ 6.61
112 Bicycles	3.3483	191.22	191.22	185.81	+ 0.00	+ 2.91