



Monthly Review on Price Indices



December, 2016
(Base 2007-08)

Government of Pakistan
Statistics Division
Pakistan Bureau of Statistics
Islamabad

Inflation in Brief

1. CPI inflation General increased by 3.7% on year-on-year basis in December 2016 as compared to an increase of 3.8% in the previous month and 3.2% in December 2015. On month-on-month basis, it decreased by 0.7% in December 2016 as compared to an increase of 0.2% in the previous month and a decrease of 0.6% in December 2015.
2. Core inflation measured by non-food non-energy CPI (Core NFNE) increased by 5.2% on (YoY) basis in December 2016 as compared to increase of 5.3% in the previous month and 4.1% in December 2015. On (MoM) basis, it increased by 0.1% in December 2016 as compared to increase of 0.2% in previous month ,and an increase of 0.2% in corresponding month of last year i.e. December 2015.
3. Core inflation, measured by 20% weighted trimmed mean CPI (Core Trimmed) increased by 3.7% on (YoY) basis in December 2016 as compared to 3.8% in the previous month and by 2.7% in December 2015. On (MoM) basis, it increased by 0.1% in December 2016 as compared to an increase of 0.2% in the previous month and an increase of 0.2% in corresponding month of last year i.e. December 2015.
4. SPI inflation on YoY increased by 0.5% in December 2016 as compared to an increase of 0.6% a month earlier and an increase of 2.9% in December 2015. On MoM basis, it decreased by 0.8% in December 2016 as compared to an increase of 0.3% a month earlier and a decrease of 0.7% in December, 2015.
5. WPI inflation on YoY basis increased by 3.1% in December 2016 as compared to an increase of 2.6% a month earlier and a decrease of 0.4% in December 2015. WPI inflation on MoM basis decreased by 0.1% in December 2016 as compared to decrease of 0.2% a month earlier a decrease of 0.6% in corresponding month of last year i.e. December 2015.
6. Figures 1 and 2 show graphically the data of Table 1. Table 1.1 shows "Period Average" and "YoY" percent changes in indices of three years.

Table 1: Inflation (%) (Base 2007-08)

Period	CPI						Core Inflation				SPI**		WPI	
	General		Food		Non-food		NFNE*		Trimmed		YoY	MoM	YoY	MoM
	YoY	MoM	YoY	MoM	YoY	MoM	YoY	MoM	YoY	MoM				
Nov 15	2.7	0.6	2.2	1.2	3.2	0.2	4.0	0.1	2.9	0.2	2.1	1.0	-1.7	0.0
Dec 15	3.2	-0.6	2.7	-1.6	3.6	0.2	4.1	0.2	2.7	0.2	2.9	-0.7	-0.4	-0.6
Jan 16	3.3	0.2	2.5	-0.6	3.9	0.8	4.3	0.9	3.0	0.6	3.1	-0.7	0.1	-0.5
Feb 16	4.0	-0.3	3.7	-0.7	4.2	0.0	4.5	0.2	3.6	0.1	3.6	-0.5	0.6	-0.6
Mar 16	3.9	0.1	3.7	0.5	4.1	-0.1	4.7	0.2	3.8	0.2	3.5	-0.2	0.2	-0.4
April 16	4.2	1.5	4.7	2.4	3.8	1.0	4.4	1.1	3.8	0.6	2.9	-0.1	0.6	1.3
May 16	3.2	-0.2	2.1	-0.7	3.9	0.2	4.6	0.2	3.6	0.2	0.6	-1.0	0.0	0.6
June 16	3.2	0.6	2.3	1.4	3.8	0.1	4.6	0.1	3.7	0.2	0.7	1.1	0.2	1.4
July 16	4.1	1.3	4.7	2.5	3.7	0.5	4.5	0.6	3.6	0.5	1.7	1.3	3.0	2.3
Aug 16	3.6	-0.3	3.4	-0.9	3.7	0.2	4.6	0.2	3.5	0.1	2.2	0.2	3.5	0.0
Sep 16	3.9	0.2	4.0	0.1	3.8	0.2	4.8	0.3	3.7	0.1	1.8	0.1	3.4	-0.5
Oct 16	4.2	0.8	4.4	0.8	4.1	0.8	5.2	0.9	3.8	0.6	1.3	0.7	2.8	-0.0
Nov 16	3.8	0.2	3.3	0.2	4.2	0.2	5.3	0.2	3.8	0.2	0.6	0.3	2.6	-0.2
Dec 16	3.7	-0.7	3.0	-1.9	4.2	0.2	5.2	0.1	3.7	0.1	0.5	-0.8	3.1	-0.1

*NFNE is non-food non-energy, ** SPI for quintile 1. Digits 0.0* are due to rounding off.

Table 1.1 : Period Average and YoY % Changes of Indices (Base 2007-08)

Index	Averages July-December % Changes			December over December % Changes		
	2016-17	2015-16	2014-15	2016	2015	2014
CPI	3.88	2.08	6.08	3.70	3.19	4.30
SPI	1.35	0.26	3.47	0.53	2.91	0.77
WPI	3.06	-2.35	2.13	3.08	-0.42	-0.89

Figure 2: CPI Inflation MoM, Special Indices

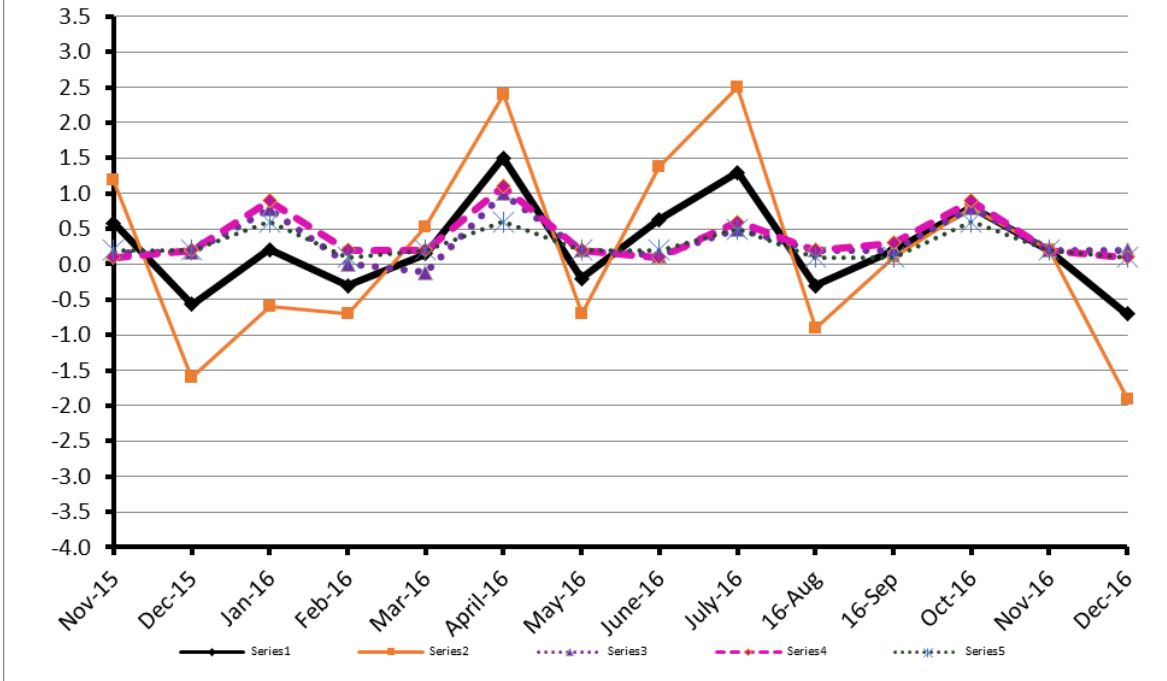
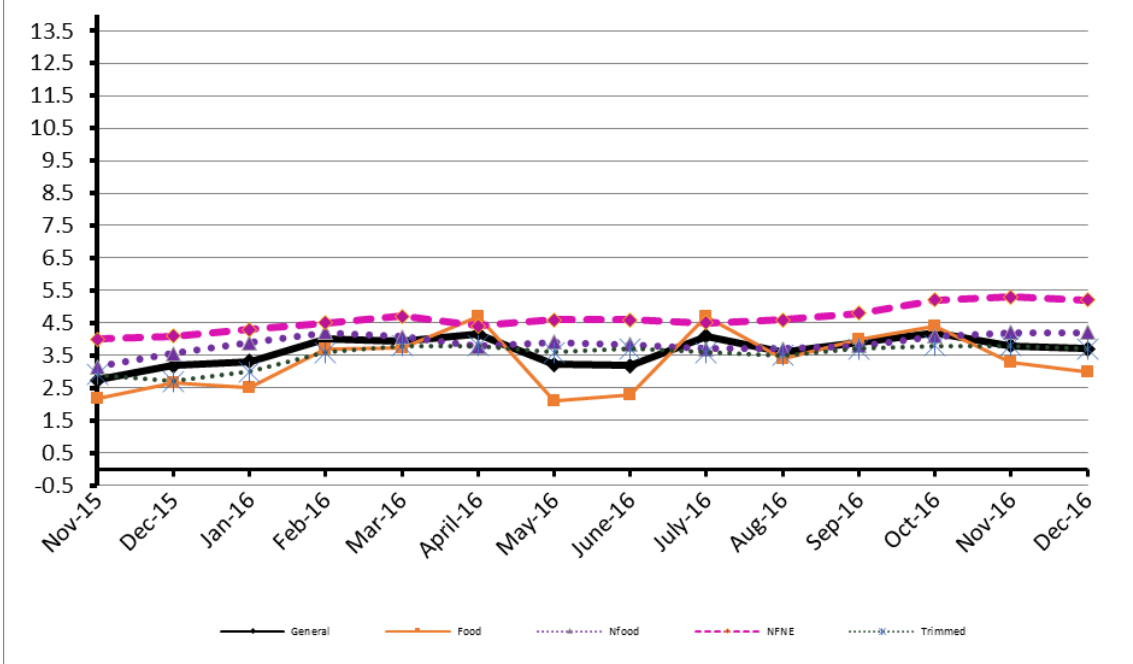


Figure 1: CPI Inflation YoY, Special Indices



II. Consumer Price Index (CPI)

The Consumer Price Index of December 2016, has decreased by 0.68% over November 2016 and increased by 3.70% over corresponding month of the last year i.e. December 2015.

Table 2 : Consumer Price Index by Group of Commodities and Services (Base 2007-08)

No	Group	Group Weight (%)	Indices			% Change December 2016 Over		Impact (In % points) December 2016 Over	
			Dec 2016	Nov 2016	Dec 2015	Nov 2016	Dec 2015	Nov 2016	Dec 2015
	General	100.00	210.57	212.01	203.06	-0.68	3.70	-0.68	3.70
1.	Food & Non-alcoholic Bev.	34.83	223.58	228.74	218.28	-2.26	2.43	-0.85	0.91
	<i>Non-perishable Food Items</i>	29.84	224.79	226.08	219.67	-0.57	2.33	-0.18	0.75
	<i>Perishable Food Items</i>	4.99	216.30	244.63	209.95	-11.58	3.02	-0.67	0.16
2.	Alcoholic Bev. & Tobacco	1.41	373.34	365.33	334.66	2.19	11.56	0.05	0.27
3.	Clothing & Footwear	7.57	233.48	232.18	223.65	0.56	4.40	0.05	0.37
4.	Housing, Water, Electricity, Gas & Fuels	29.41	191.70	191.64	182.69	0.03	4.93	0.01	1.30
5.	Furnishing & Household Equipment Maintenance	4.21	223.65	223.21	216.78	0.20	3.17	0.01	0.14
6.	Health	2.19	195.93	195.28	180.83	0.33	8.35	0.01	0.16
7.	Transport	7.20	172.01	170.65	177.69	0.80	-3.20	0.05	-0.20
8.	Communication	3.22	131.53	131.52	130.56	0.01	0.74	0.00	0.02
9.	Recreation & Culture	2.02	196.50	196.40	193.66	0.05	1.47	0.00	0.03
10.	Education	3.94	233.40	233.40	209.31	0.00	11.51	0.00	0.47
11.	Restaurants & Hotels	1.23	268.22	267.68	255.77	0.20	4.87	0.00	0.08
12.	Miscellaneous	2.76	237.77	238.33	226.28	-0.23	5.08	-0.01	0.16

Main contributors to month-on-month and year-on-year percentage changes are given below and detail is given in Annexure A.

- Month-on-month** Top few commodities which varied from previous month are given below:-

Food Items Increased: Eggs (6.86%), Tea (3.0%), Cigarettes (2.21%), Gram Whole (1.69%), Fish (1.32%), Besan (1.1%) and Vegetable Ghee (1.02%).

Decreased: Potatoes (19.88%), Fresh Vegetables (19.8%), Sugar (13.44%), Chicken (9.94%), Gur (4.74%), Pulse Mash (4.34%), Tomatoes (2.97%), Onion (2.7%), Pulse Masoor (2.24%), and Pulse Moong (2.11%).

Non-food Items Increased: Motor Fuel (2.37%), Kerosene oil (1.38%), Tailoring (1.37%), Woolen Cloth (1.27%), Newspaper (1.21%), Firewood Whole (1.18%), and Medical equipments(1.1%).

Decreased: Personal equipments (0.79%).

- Year-on-Year:** Top few commodities which varied from previous year i.e. December 2015 are given below:-

Food Items Increased: Gram Whole (43.75%), Pulse Gram (37.52%), Besan (33.08%), Eggs (23.73%), Fresh Vegetables (22.04%), Potatoes (19.41%), Cigarettes (11.6%), Sugar (11.54%), Fresh Fruits (9.5%), and Betel Leaves and Nuts (7.53%).

Decreased: Onion (48.05%), Tomatoes (18.28%), Chicken (12.37%), Pulse Moong (10.05%) and Tea (5.44%).

Non-food Items Increased: Education (11.51%), Water Supply (9.89%), Medical Equipments (9.72%), Doctor (MBBS) Clinic Fee (8.9%), Drugs & Medicines (8.83%), Tailoring (7.82%), Personal Equipments (7.4%), and House Rent (6.65%).

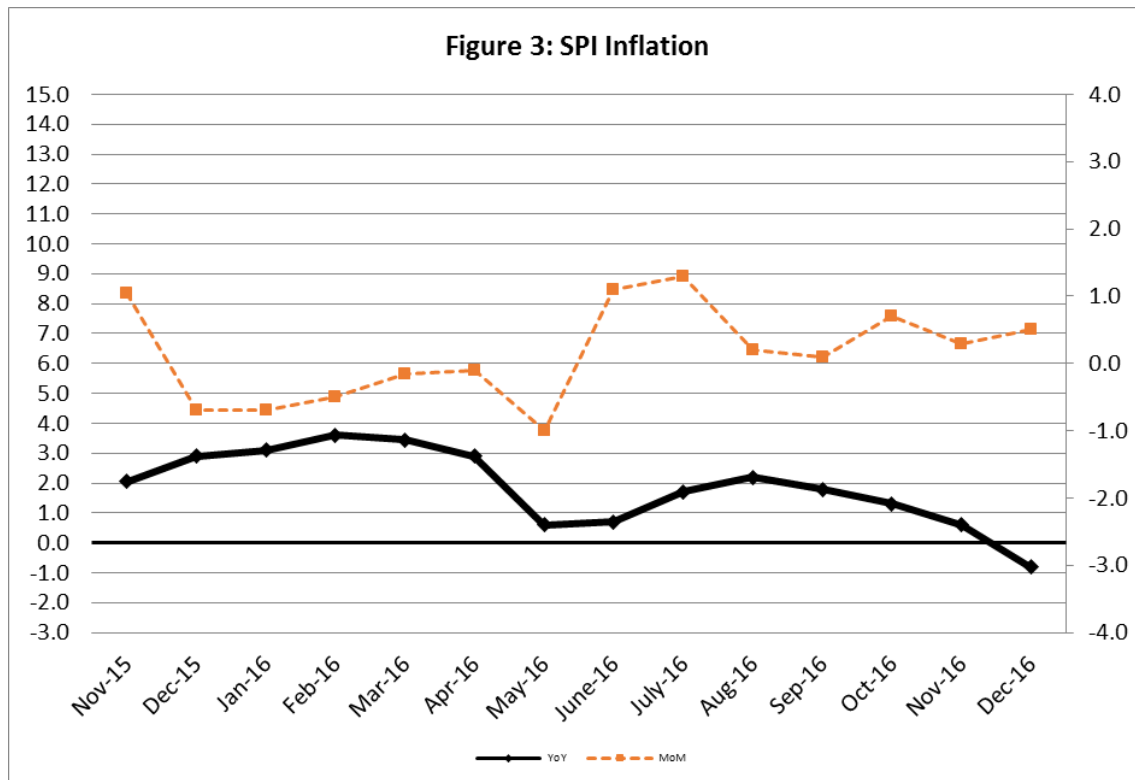
Decreased: Motor Fuel (7.15%), Motor Vehicle Accessories (6.19%) and Kerosene Oil (5.82%).

III. Sensitive Price Indicator

Quintile-wise percentage changes YoY and MoM are given below in Table 3. The series from November 2015 to December 2016 is also graphed below in Figure 3.

Table 3: Sensitive Price Indicator (Base 2007-08)					
Quintiles	Indices			% Change Dec 2016 over	
	Dec 2016	Nov 2016	Dec 2015	Nov 2016	Dec 2015
1	210.74	212.40	209.62	-0.78	0.53
2	218.08	219.58	216.87	-0.68	0.56
3	219.12	220.41	217.86	-0.59	0.58
4	223.75	224.77	222.48	-0.45	0.57
5	220.49	220.95	219.50	-0.21	0.45
Combined	219.73	220.68	218.60	-0.43	0.52

Table 3.1 : Weekly Percentage Change of SPI During December-16					
Quintiles	% Change with Previous week				
	1st Dec-2016	8th Dec-2016	15th Dec 2016	22nd Dec-2016	29th Dec-2016
Quantile 1	0.51	-0.71	-0.60	-0.49	-0.22
Combined	0.68	-0.68	-0.52	-0.45	-0.16



IV. Wholesale Price Index

The Wholesale Price Index for December, 2016 decreased by 0.14% over November, 2016. It increased by 3.08% over the corresponding month of the last year. YoY and MoM movements, from November, 2015 to December, 2016 are also graphed below in Figure 4.

Table 4 : Wholesale Price Index by Group of Commodities (Base 2007-08)

No.	Group	Group Weight (%)	Indices			% Change December, 2016 over		Impact (in %age points) December, 2016 over	
			Dec 2016	Nov 2016	Dec 2015	Nov 2016	Dec 2015	Nov 2016	Dec 2015
	General	100.00	213.76	214.07	207.37	-0.14	3.08	-0.14	3.08
1.	Agriculture, Forestry & Fishery Products	25.77	240.83	242.47	221.68	-0.68	8.64	-0.20	2.38
2.	Ores & Minerals, Electricity, Gas & Water	12.04	242.61	242.44	247.36	0.07	-1.92	0.01	-0.28
3.	Food Products, Beverages & Tobacco, Textiles, Apparel & Leather Products	31.11	224.74	225.93	213.69	-0.53	5.17	-0.17	1.66
	i. Food Products, Bev. & Tobacco	20.07	236.67	239.18	226.14	-1.05	4.66	-0.24	1.02
	ii. Textiles and Apparel	10.33	203.15	201.76	190.57	0.69	6.60	0.07	0.63
	iii. Leather Products	0.71	201.69	202.86	198.07	-0.58	1.83	0.00	0.01
4.	Other Transportable Goods except Metal Products, Machinery & Equipment	22.37	167.14	165.19	174.69	1.18	-4.32	0.20	-0.82
5.	Metal Products, Machinery & Equipment	8.72	174.28	174.11	171.11	0.10	1.85	0.01	0.13

Main contributors to month-on-month and year-on-year percentage changes are given below and detail is given in Annexure B.

1. **Month-on-month** Top few commodities which varied from previous month i.e. November, 2016 are given below:-

Increased: Hard Board (11.58%), Woven Fabrics (8.47%), Eggs (8.04%), Pipe Fittings (5.09%), Glass Sheets (4.94%), Furnace Oil (4.93%), Stimulant & Spice Crops (4.54%), Dried Fruit & Nuts (4.44%), Fiber Crops (3.62%), Coffee & Tea (3.29%), Fresh Fruits (3.27%) and Motor Spirit (3.11%).

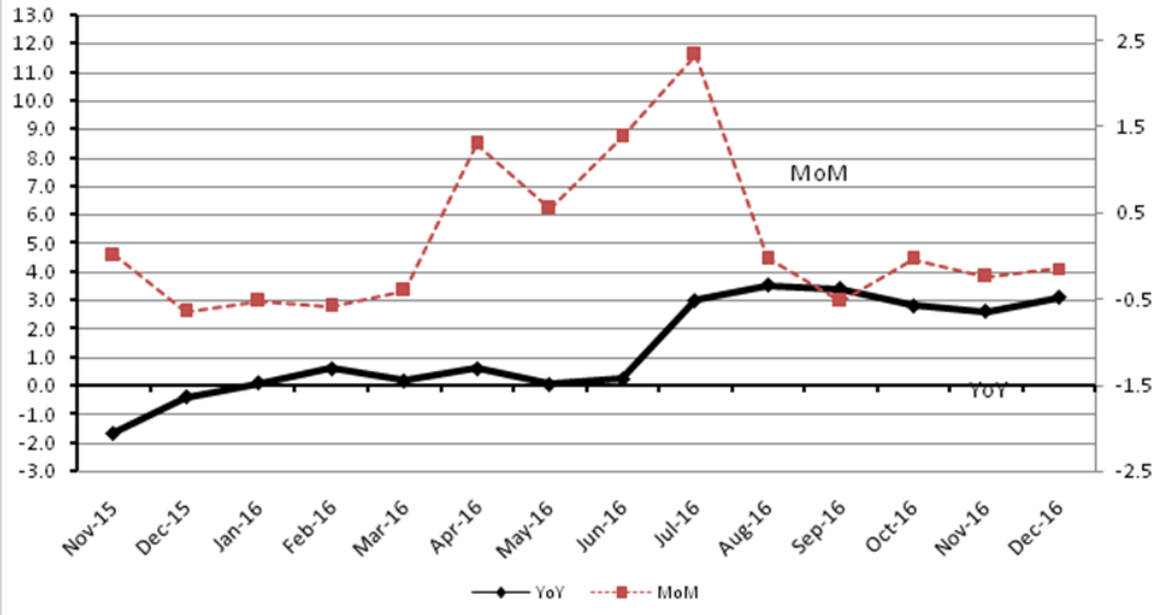
Decreased: Vegetables (22.70%), Potatoes (15.69%), Sugar (13.55%), Poultry (10.22%), Engines & Motors (8.82%), Vacuum Pumps (7.22%) and Hides & Fur Skins (5.59%).

2. **Year-on-year** Top few commodities which varied from previous year i.e. December, 2015 are given below:-

Increased: Furnace Oil (48.39%), Other Cereal Flour (43.11%), Woolen Carpets (37.50%), Fish (31.37%), Glass Sheets (28.49%), Eggs (26.65%), Other Glass Articles (25.38%), Potatoes (22.60%), Pulses (22.46%), Fiber Crops (18.71%), Unmanufactured Tobacco (18.30%), Lathe Machines (15.44%), Medicines (14.76%) and Woven Fabrics (12.72%).

Decreased: Hides & Fur Skins (24.23%), Kerosene Oil (23.27%), Fertilizers (20.82%), Coal (19.19%), Poultry (16.30%), Diesel Oil (14.10%), Cultivators (13.24%), Motor spirit (13.11%) and Stimulant & Spice Crops (12.24%),

Figure 4: WPI Inflation



Annexure A: Consumer Price Index Numbers by Commodity Groups & Commodities (2007-08=100)

Item and Specification	Weight	Index Numbers			% Change in Dec 2016 over		
		Dec 16	Nov 16	Dec 15	Nov 2016	Dec 2015	
General	100.0000	210.57	212.01	203.06	-	0.68	+ 3.70
Food and non-alcoholic Beverages	34.8343	223.58	228.74	218.28	-	2.26	+ 2.43
01 Wheat	0.3477	205.54	203.78	206.87	+	0.86	- 0.64
02 Wheat Flour	4.1648	213.35	212.30	217.09	+	0.49	- 1.72
03 Wheat Product	0.0959	217.16	217.35	216.90	-	0.09	+ 0.12
04 Besan	0.1500	350.39	346.57	263.29	+	1.10	+ 33.08
05 Rice	1.5821	160.68	160.23	156.85	+	0.28	+ 2.44
06 Cereals	0.1563	253.48	251.74	244.30	+	0.69	+ 3.76
07 Bakery & Confectionary	1.1550	216.31	216.46	210.23	-	0.07	+ 2.89
08 Nimco	0.4574	250.57	250.65	243.73	-	0.03	+ 2.81
09 Meat	2.4303	266.71	266.48	257.73	+	0.09	+ 3.48
10 Chicken	1.3596	157.28	174.63	179.49	-	9.94	- 12.37
11 Fish	0.2970	218.75	215.91	221.24	+	1.32	- 1.13
12 Milk Fresh	6.6800	267.57	267.15	258.64	+	0.16	+ 3.45
13 Milk Products	0.6338	257.72	257.33	250.23	+	0.15	+ 2.99
14 Milk Powder	0.1129	236.55	237.27	232.01	-	0.30	+ 1.96
15 Eggs	0.4555	258.52	241.93	208.94	+	6.86	+ 23.73
16 Mustard Oil	0.0952	156.65	155.96	154.57	+	0.44	+ 1.35
17 Cooking Oil	1.7538	134.91	134.00	133.55	+	0.68	+ 1.02
18 Vegetable Ghee	2.0714	139.83	138.42	136.07	+	1.02	+ 2.76
19 Dry Fruits	0.2543	265.05	265.00	258.78	+	0.02	+ 2.42
20 Fresh Fruits	1.8649	211.59	211.10	193.24	+	0.23	+ 9.50
21 Pulse Masoor	0.2712	206.54	211.28	203.16	-	2.24	+ 1.66
22 Pulse Moong	0.2336	272.85	278.74	303.32	-	2.11	- 10.05
23 Pulse Mash (Washed)	0.2098	320.74	335.28	336.48	-	4.34	- 4.68
24 Pulse Gram	0.2361	373.11	377.06	271.32	-	1.05	+ 37.52
25 Gram Whole	0.1616	318.41	313.13	221.50	+	1.69	+ 43.75
26 Beans	0.0269	230.80	231.13	233.87	-	0.14	- 1.31
27 Potatoes	0.4671	236.78	295.55	198.29	-	19.88	+ 19.41
28 Onion	0.5312	162.08	166.58	312.02	-	2.70	- 48.05
29 Tomatoes	0.4391	163.62	168.62	200.23	-	2.97	- 18.28
30 Fresh Vegetables	1.6886	246.60	307.50	202.07	-	19.80	+ 22.04
31 Sugar	1.0445	225.55	260.56	202.21	-	13.44	+ 11.54
32 Gur	0.0220	268.12	281.47	266.16	-	4.74	+ 0.74
33 Honey	0.0446	317.30	316.04	306.28	+	0.40	+ 3.60
34 SweetMeat	0.2483	245.95	245.39	239.13	+	0.23	+ 2.85
35 Beverages	1.1990	218.49	219.50	217.44	-	0.46	+ 0.48
36 Jam, Tomato Ketchup & Pickles	0.2454	216.60	216.26	211.62	+	0.16	+ 2.35
37 Condiments	0.2656	265.42	265.31	260.42	+	0.04	+ 1.92
38 Spices	0.5441	238.63	239.32	238.38	-	0.29	+ 0.10
39 Tea	0.8377	264.16	256.46	279.35	+	3.00	- 5.44
Alcoholic Beverages, Tobacco	1.4135	373.34	365.33	334.66	+	2.19	+ 11.56
40 Cigarettes	1.3906	375.47	367.34	336.44	+	2.21	+ 11.60
41 Betel Leaves & Nuts	0.0229	243.86	243.10	226.79	+	0.31	+ 7.53
Clothing and footwear	7.5708	233.48	232.18	223.65	+	0.56	+ 4.40
42 Cotton Cloth	1.7286	225.47	225.35	215.47	+	0.05	+ 4.64
43 Woolen Cloth	0.8759	253.61	250.42	239.67	+	1.27	+ 5.82
44 Readymade Garments	0.9739	239.41	238.62	227.80	+	0.33	+ 5.10
45 Woolen Readymade Garments	0.3964	262.60	260.39	258.26	+	0.85	+ 1.68
46 Hosiery	0.5094	245.88	244.86	237.01	+	0.42	+ 3.74
47 Dopatta	0.4412	243.24	241.74	235.93	+	0.62	+ 3.10
48 Cleaning and Laundry	0.2110	257.94	257.02	248.98	+	0.36	+ 3.60
49 Tailoring	0.8840	308.64	304.47	286.25	+	1.37	+ 7.82
50 Footwear	1.5504	166.82	166.74	165.24	+	0.05	+ 0.96
Housing, water, Elec., Gas and	29.4149	191.70	191.64	182.69	+	0.03	+ 4.93
51 House Rent	21.8149	182.22	182.22	170.85	+	0.00	+ 6.65
52 Construction Input Items	0.5623	249.23	248.60	242.37	+	0.25	+ 2.83
53 Construction Wage Rates	0.3331	234.08	232.60	223.74	+	0.64	+ 4.62
54 Water Supply	0.4971	164.74	164.74	149.92	+	0.00	+ 9.89
55 Electricity	4.3985	238.10	238.10	238.10	+	0.00	+ 0.00
56 Gas	1.5756	158.08	158.08	158.08	+	0.00	+ 0.00
57 Kerosene Oil	0.0057	198.63	195.93	210.91	+	1.38	- 5.82

Annexure A: Consumer Price Index Numbers by Commodity Groups & Commodities (2007-08=100)

	Item and Specification	Weight	Index Numbers			% Change in Dec 2016 over	
			Dec 16	Nov 16	Dec 15	Nov 2016	Dec 2015
58	Firewood Whole	0.2277	290.35	286.97	281.03	+ 1.18	+ 3.32
	Furnishing and household equi	4.2082	223.65	223.21	216.78	+ 0.20	+ 3.17
59	Furniture	0.3315	215.42	214.48	207.57	+ 0.44	+ 3.78
60	Household Textiles	0.6489	226.07	224.66	215.47	+ 0.63	+ 4.92
61	Household Equipment	0.5936	179.28	179.18	176.33	+ 0.06	+ 1.67
62	Utensils	0.3212	225.53	225.32	219.05	+ 0.09	+ 2.96
63	Plastic Products	0.2547	208.70	207.64	205.82	+ 0.51	+ 1.40
64	Washing Soaps & Detergents	0.7893	229.76	229.75	226.72	+ 0.00	+ 1.34
65	Sewing Needle & Dr Cell	0.1496	202.74	201.34	202.24	+ 0.70	+ 0.25
66	Household Servant	1.0432	249.98	249.98	238.79	+ 0.00	+ 4.69
67	Marriage Hall Charges	0.0762	243.95	243.87	234.48	+ 0.03	+ 4.04
	Health	2.1868	195.93	195.28	180.83	+ 0.33	+ 8.35
68	Drugs & Medicines	1.2667	162.31	161.86	149.14	+ 0.28	+ 8.83
69	Medical Equipments	0.0080	248.70	246.00	226.66	+ 1.10	+ 9.72
70	Doctor (MBBS) Clinic Fee	0.5904	270.37	269.50	248.27	+ 0.32	+ 8.90
71	Medical Tests	0.3217	190.38	189.39	180.72	+ 0.52	+ 5.35
	Transport	7.2023	172.01	170.65	177.69	+ 0.80	- 3.20
72	Motor Vehicles	0.6630	171.60	171.44	163.01	+ 0.09	+ 5.27
73	Motor Vehicle Accessories	0.2439	213.37	213.96	227.45	- 0.28	- 6.19
74	Motor Fuel	3.0269	139.99	136.75	150.77	+ 2.37	- 7.15
75	Mechanical Service	0.4552	227.84	227.84	221.05	+ 0.00	+ 3.07
76	Motor Vehicle Tax	0.1099	210.18	210.18	210.18	+ 0.00	+ 0.00
77	Transport Services	2.7034	193.28	193.28	198.32	+ 0.00	- 2.54
	Communication	3.2198	131.53	131.52	130.56	+ 0.01	+ 0.74
78	Postal Services	0.0662	244.89	244.70	234.78	+ 0.08	+ 4.31
79	Communication & Apparatus	3.1536	129.15	129.15	128.38	+ 0.00	+ 0.60
	Recreation and culture	2.0227	196.50	196.40	193.66	+ 0.05	+ 1.47
80	Recreation & Culture	0.8634	129.41	129.92	128.29	- 0.39	+ 0.87
81	Text Books	0.5706	292.41	292.41	290.62	+ 0.00	+ 0.62
82	Newspapers	0.1934	177.62	175.49	175.42	+ 1.21	+ 1.25
83	Stationery	0.3953	213.85	213.25	205.42	+ 0.28	+ 4.10
	Education	3.9431	233.40	233.40	209.31	+ 0.00	+ 11.51
84	Education	3.9431	233.40	233.40	209.31	+ 0.00	+ 11.51
	Restaurants and hotels	1.2286	268.22	267.68	255.77	+ 0.20	+ 4.87
85	Readymade Food	1.2286	268.22	267.68	255.77	+ 0.20	+ 4.87
	Misc. goods and services	2.7550	237.77	238.33	226.28	- 0.23	+ 5.08
86	Personal Care	1.4935	219.13	218.97	210.48	+ 0.07	+ 4.11
87	Cosmetics	0.3853	201.47	201.04	196.47	+ 0.21	+ 2.54
88	Blades	0.0322	195.66	195.66	194.65	+ 0.00	+ 0.52
89	Personal Equipments	0.8440	288.94	291.24	269.04	- 0.79	+ 7.40

Annexure B: Wholesale Price Indices by Major Groups & Commodities

(2007-08=100)

Item and Specification	Weight	Index Numbers			% Change in Dec 2016 over		
		Dec 16	Nov 16	Dec 15	Nov 2016	Dec 2015	
General	100.0000	213.76	214.07	207.37	-	0.14	+ 3.08
Agriculture Forestry & Fisher	25.7674	240.83	242.47	221.68	-	0.68	+ 8.64
001 Wheat	0.6297	212.55	211.20	218.20	+	0.64	- 2.59
002 Maize	0.6764	186.79	191.32	182.47	-	2.37	+ 2.37
003 Rice	2.4413	148.27	148.65	142.70	-	0.26	+ 3.90
004 Sorghum / Jowar	0.0214	236.86	242.91	258.26	-	2.49	- 8.29
005 Millet / Bajra	0.0374	168.85	171.85	181.34	-	1.75	- 6.89
006 Vegetables	1.2441	228.09	295.08	219.72	-	22.70	+ 3.81
007 Fresh Fruits	1.5144	209.13	202.51	207.01	+	3.27	+ 1.02
008 Dry Fruits	0.2478	249.28	244.77	242.59	+	1.84	+ 2.76
009 Cotton Seeds	1.1511	267.33	260.78	253.39	+	2.51	+ 5.50
010 Other Oil Seeds	0.0722	182.29	177.55	162.29	+	2.67	+ 12.32
011 Edible Roots / Potatoes	0.2540	237.47	281.67	193.69	-	15.69	+ 22.60
012 Stimulant & Spice Crops	0.1634	226.70	216.85	258.33	+	4.54	- 12.24
013 Pulses	0.4901	306.52	312.67	250.31	-	1.97	+ 22.46
014 Sugar Crops	1.0725	268.94	266.42	286.29	+	0.95	- 6.06
015 Fibre Crops	5.3169	204.48	197.33	172.25	+	3.62	+ 18.71
016 Unmanufactured Tobacco	0.0742	271.72	265.84	229.69	+	2.21	+ 18.30
017 Poultry	0.5633	160.36	178.62	192.50	-	10.22	- 16.70
018 Raw Milk from Bovine Animals	7.0279	267.02	267.02	255.42	+	0.00	+ 4.54
019 Eggs	0.5034	272.03	251.78	214.79	+	8.04	+ 26.65
020 Raw Animal Materials / Wool	0.0351	175.58	173.89	179.16	+	0.97	- 2.00
021 Hides & Fur Skins, Raw	0.4834	116.10	122.98	153.22	-	5.59	- 24.23
022 Fuel Wood in Logs	0.0179	274.82	269.14	263.57	+	2.11	+ 4.27
023 Fish Live Fresh or Chilled	1.7295	447.84	447.65	340.91	+	0.04	+ 31.37
Ores/Minerals, Elec., Gas & W	12.0389	242.61	242.44	247.36	+	0.07	- 1.92
024 Coal not Agglomerated	0.7508	155.29	155.29	192.16	+	0.00	- 19.19
025 Natural Gas Liquified	5.7385	210.67	210.34	210.78	+	0.16	- 0.05
026 Salt & Pure Sodium Chloride	0.0584	235.45	231.97	252.31	+	1.50	- 6.68
027 Electrical Energy	5.4912	288.00	288.00	293.09	+	0.00	- 1.74
Food, Beverages, Tobacco, Textil	31.1122	224.74	225.93	213.69	-	0.53	+ 5.17
Food Products, Beverages &	20.0718	236.67	239.18	226.14	-	1.05	+ 4.66
028 Meat of Animals	3.4559	280.41	279.82	267.04	+	0.21	+ 5.01
029 Vegetables & Fruit Juice	0.0058	214.03	211.47	201.36	+	1.21	+ 6.29
030 Dried Fruits & Nuts	0.1733	261.81	250.67	240.13	+	4.44	+ 9.03
031 Fruit Juices	0.3880	179.33	184.03	177.53	-	2.55	+ 1.01
032 Vegetable Oils Refined	1.9242	152.35	151.24	149.34	+	0.73	+ 2.02
033 Vegetable Ghee	1.5632	125.82	123.44	118.09	+	1.93	+ 6.55
034 Oil Cakes	0.9611	229.61	227.22	218.03	+	1.05	+ 5.31
035 Processed Liquid Milk	4.4437	257.57	257.57	247.57	+	0.00	+ 4.04
036 Milk & Cream in Solid Form	0.0316	218.90	220.54	217.97	-	0.74	+ 0.43
037 Ice Cream	0.0047	238.04	238.04	219.91	+	0.00	+ 8.24
038 Dairy Products N.E.C	0.0117	252.95	252.52	244.60	+	0.17	+ 3.41
039 Wheat Flour	2.3034	196.85	196.86	202.13	-	0.01	- 2.61
040 Other Cereal Flour	0.0604	328.97	327.54	229.87	+	0.44	+ 43.11
041 Sugar Refined	1.7975	235.83	272.80	210.55	-	13.55	+ 12.01
042 Chocolate	0.0139	100.00	99.45	101.06	+	0.55	- 1.05
043 Sugar Confectionary	0.0738	128.44	128.15	118.83	+	0.23	+ 8.09
044 Coffee & Tea	0.7303	240.04	232.40	261.86	+	3.29	- 8.33
045 Spices	0.1449	190.44	190.38	188.33	+	0.03	+ 1.12
046 Other Food Products	0.0336	293.85	293.85	292.02	+	0.00	+ 0.63
047 Mineral Water	0.0207	198.57	197.57	188.35	+	0.51	+ 5.43
048 Beverages	0.6303	172.33	172.33	171.95	+	0.00	+ 0.22
049 Tobacco Products	1.2998	435.03	435.03	387.30	+	0.00	+ 12.32
Textiles & Apparels	10.3289	203.15	201.76	190.57	+	0.69	+ 6.60
050 Cotton Yarn	5.2491	194.35	191.63	177.62	+	1.42	+ 9.42
051 Nylon Yarn	0.1719	143.99	143.99	147.08	+	0.00	- 2.10
052 Blended Yarn	0.1689	180.58	179.94	180.89	+	0.36	- 0.17
053 Woven Fabrics	0.0128	310.72	286.46	275.66	+	8.47	+ 12.72
054 Cotton Fabrics	0.6343	209.34	209.09	201.65	+	0.12	+ 3.81
055 Other Fabrics	1.1016	224.40	224.94	217.81	-	0.24	+ 3.03
056 Silk & Reyon Fabrics	0.7350	189.21	191.76	186.80	-	1.33	+ 1.29
057 Towels	0.1235	271.17	271.17	267.20	+	0.00	+ 1.49
058 Blankets	0.0029	247.52	247.52	243.93	+	0.00	+ 1.47

Annexure B: Wholesale Price Indices by Major Groups & Commodities

(2007-08=100)

Item and Specification	Weight	Index Numbers			% Change in Dec 2016 over	
		Dec 16	Nov 16	Dec 15	Nov 2016	Dec 2015
059 Bed Sheets	0.0913	257.96	257.96	256.29	+ 0.00	+ 0.65
060 Quilts	0.0019	203.79	203.79	198.00	+ 0.00	+ 2.92
061 Woolen Carpets	0.0383	196.43	196.43	142.86	+ 0.00	+ 37.50
062 Synthetic Carpets	0.0566	129.25	129.25	129.25	+ 0.00	+ 0.00
063 Hosiery Products	0.8832	241.83	241.05	222.88	+ 0.32	+ 8.50
064 Readymade Garments	1.0576	201.70	200.44	193.27	+ 0.63	+ 4.36
Leather Products	0.7115	201.69	202.86	198.07	- 0.58	+ 1.83
065 Leather Without Hair	0.2973	226.61	229.40	221.97	- 1.22	+ 2.09
066 Other Leather N.E.C	0.2567	207.31	207.31	207.64	+ 0.00	- 0.16
067 Footwears	0.1575	145.51	145.51	137.38	+ 0.00	+ 5.92
Other Transportable Goods	22.3659	167.14	165.19	174.69	+ 1.18	- 4.32
068 Timber	0.0165	225.41	224.68	214.43	+ 0.32	+ 5.12
069 Printing Paper	0.4279	165.63	164.90	161.82	+ 0.44	+ 2.35
070 Hard Board	0.1579	220.83	197.92	197.92	+ 11.58	+ 11.58
071 Coke	0.2797	163.45	163.45	163.45	+ 0.00	+ 0.00
072 Motor Spirit	1.5336	111.92	108.54	128.80	+ 3.11	- 13.11
073 Diesel Oil	5.2664	147.31	144.34	171.49	+ 2.06	- 14.10
074 Kerosine Oil	0.2151	115.11	115.11	150.01	+ 0.00	- 23.27
075 Furnace Oil	3.2664	96.87	92.32	65.28	+ 4.93	+ 48.39
076 Mobil Oil	0.7114	196.91	195.35	199.78	+ 0.80	- 1.44
077 Chemicals	1.7720	175.83	175.41	182.83	+ 0.24	- 3.83
078 Dyeing Material	0.1539	146.55	146.55	146.55	+ 0.00	+ 0.00
079 Fertilizers	2.8657	215.07	216.35	271.62	- 0.59	- 20.82
080 Pesticides	0.2763	304.43	308.75	312.37	- 1.40	- 2.54
081 Insecticides	0.1276	138.00	135.98	134.66	+ 1.49	+ 2.48
082 Paints & Varnishes	0.1916	296.43	295.36	295.36	+ 0.36	+ 0.36
083 Medicines	1.1428	168.57	168.53	146.89	+ 0.02	+ 14.76
084 Soaps & Detergents	0.8168	190.20	187.81	181.28	+ 1.27	+ 4.92
085 Auto Tyres	0.2703	176.87	177.38	192.83	- 0.29	- 8.28
086 Plastic Products	0.4550	225.73	225.73	231.05	+ 0.00	- 2.30
087 Glass sheets	0.2089	297.20	283.21	231.30	+ 4.94	+ 28.49
088 Other Glass Articles	0.1635	305.47	299.07	243.63	+ 2.14	+ 25.38
089 Ceramics & Sanitary Fixture	0.0244	234.18	234.18	227.13	+ 0.00	+ 3.10
090 Bricks, Blocks & Tiles	0.1566	219.02	219.15	217.47	- 0.06	+ 0.71
091 Cement	1.8145	213.07	212.63	206.53	+ 0.21	+ 3.17
092 Bed Foam	0.0006	167.17	164.33	157.17	+ 1.73	+ 6.36
093 Matches	0.0505	162.62	162.62	162.62	+ 0.00	+ 0.00
Metal Product, Machinery & Eq	8.7156	174.28	174.10	171.11	+ 0.10	+ 1.85
094 Pig Iron	0.0593	128.97	128.97	128.97	+ 0.00	+ 0.00
095 Steel Bar & Sheets	1.4022	127.05	126.37	127.00	+ 0.54	+ 0.04
096 Pipe Fittings	0.0780	203.49	193.63	194.96	+ 5.09	+ 4.38
097 Steel Products	0.3879	177.38	177.38	176.27	+ 0.00	+ 0.63
098 Engines & Motors	0.0046	116.98	128.30	109.07	- 8.82	+ 7.25
099 Vacuum Pumps	0.0155	123.69	133.32	115.39	- 7.22	+ 7.19
100 Air Conditioners	0.0049	199.33	201.18	200.18	- 0.92	- 0.42
101 Cultivators	0.0551	190.66	190.66	219.76	+ 0.00	- 13.24
102 Chuff Cutter	0.1293	153.46	153.46	149.20	+ 0.00	+ 2.86
103 Tractors	0.0028	201.75	201.75	205.43	+ 0.00	- 1.79
104 Lathe Machines	0.0525	241.06	241.06	208.81	+ 0.00	+ 15.44
105 Concrete Mixture	0.0107	138.83	138.83	138.83	+ 0.00	+ 0.00
106 Fridge,WashM,SewM,Fans,Iron	1.1645	207.15	204.01	200.43	+ 1.54	+ 3.35
107 Electric Wires	0.0912	204.51	200.83	195.19	+ 1.83	+ 4.77
108 Lighting Equipments	1.4431	172.50	172.50	167.30	+ 0.00	+ 3.11
109 Radio & Television	0.1843	140.42	140.42	126.49	+ 0.00	+ 11.01
110 Motor Vehicles	0.0244	191.39	191.39	183.03	+ 0.00	+ 4.57
111 Motorcycles	0.2570	125.89	125.89	125.89	+ 0.00	+ 0.00
112 Bicycles	3.3483	187.65	188.81	185.63	- 0.61	+ 1.09