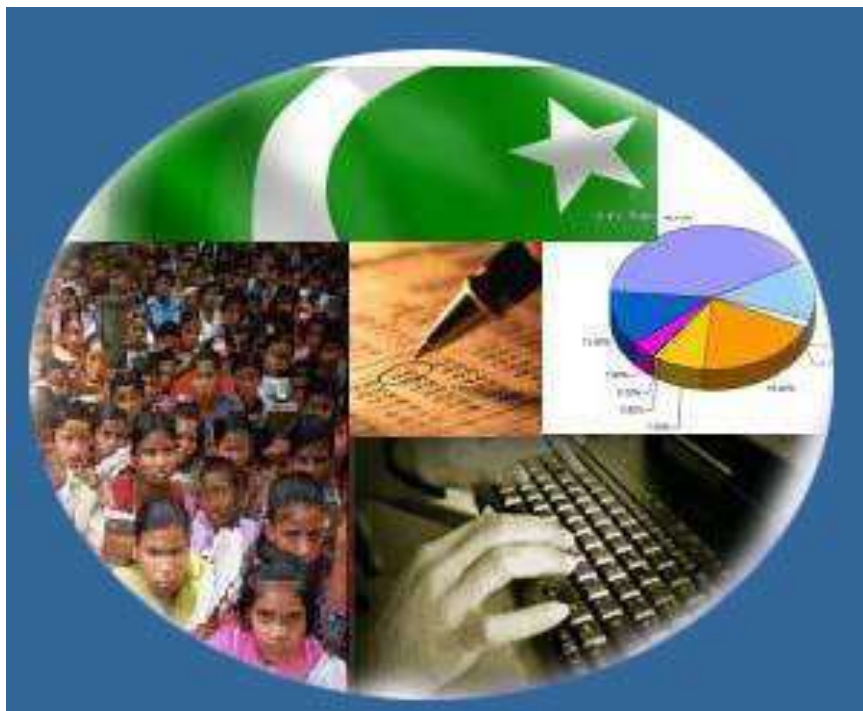




# Monthly Review on Price Indices



**October, 2017**  
**(Base 2007-08)**

**Government of Pakistan**  
**Statistics Division**  
**Pakistan Bureau of Statistics**  
**Islamabad**



## Inflation in Brief

1. CPI inflation General increased by 3.8% on year-on-year basis in October 2017 as compared to an increase of 3.9% in the previous month and 4.2% in October 2016. On month-on-month basis, it increased by 0.7% in October 2017 as compared to an increase of 0.6% in the previous month and increase of 0.8% in October 2016.
2. Core inflation measured by non-food non-energy CPI (Core NFNE) increased by 5.3% on (YoY) basis in October 2017 as compared to an increase of 5.4% in the previous month and 5.2% in October 2016. On (MoM) basis, it increased by 0.9% in October 2017 as compared to increase of 0.1% in previous month, and an increase of 0.9% in corresponding month of last year i.e. October 2016.
3. Core inflation, measured by 20% weighted trimmed mean CPI (Core Trimmed) increased by 4.0% on (YoY) basis in October 2017 as compared to 4.1% in the previous month and by 3.8% in October 2016. On (MoM) basis, it increased by 0.6% in October 2017 as compared to an increase of 0.1% in the previous month and an increase of 0.6% in corresponding month of last year i.e. October 2016.
4. SPI inflation on YoY increased by 2.1% in October 2017 as compared to an increase of 1.9% a month earlier and an increase of 1.3% in October 2016. On MoM basis, it increased by 0.9% in October 2017 as compared to an increase of 2.1% a month earlier and an increase of 0.7% in October 2016.
5. WPI inflation on YoY basis increased by 2.3% in October 2017 as compared to an increase of 1.6% a month earlier and an increase of 2.8% in October 2016. WPI inflation on MoM basis increased by 0.6% in October 2017 as compared to an increase of 0.1% a month earlier and increase of 0.0% in corresponding month of last year i.e. October 2016.
6. Figures 1 and 2 show graphically the data of Table 1. Table 1.1 shows "Period Average" and "YoY" percent changes in indices of three years.

**Table 1: Inflation (%) (Base 2007-08)**

Period	CPI						Core Inflation				SPI**		WPI	
	General		Food		Non-food		NFNE*		Trimmed		YoY	MoM	YoY	MoM
	YoY	MoM	YoY	MoM	YoY	MoM	YoY	MoM	YoY	MoM				
Sep-16	3.9	0.2	4.0	0.1	3.8	0.2	4.8	0.3	3.7	0.1	1.8	0.1	3.4	-0.5
Oct-16	4.2	0.8	4.4	0.8	4.1	0.8	5.2	0.9	3.8	0.6	1.3	0.7	2.8	0.0
Nov-16	3.8	0.2	3.3	0.2	4.1	0.2	5.3	0.2	3.8	0.2	0.6	0.3	2.6	-0.2
Dec-16	3.7	-0.7	3.0	-1.9	4.2	0.2	5.2	0.1	3.7	0.1	0.5	-0.8	3.1	-0.1
Jan-17	3.7	0.2	2.6	-1.0	4.4	1.0	5.4	1.1	3.8	0.6	0.4	-0.8	4.2	0.5
Feb-17	4.2	0.3	3.7	0.3	4.6	0.3	5.3	0.2	4.1	0.2	1.1	0.2	5.3	0.5
Mar-17	4.9	0.8	5.0	1.9	4.9	0.1	5.3	0.1	4.5	0.2	3.1	1.8	6.4	0.7
Apr-17	4.8	1.4	4.4	1.7	5.1	1.2	5.5	1.3	4.8	0.8	2.3	-0.9	6.0	0.9
May-17	5.0	0.0	4.9	-0.2	5.1	0.2	5.5	0.2	4.8	0.2	2.4	-0.9	5.2	-0.2
Jun-17	3.9	-0.4	2.4	-1.1	5.0	0.1	5.5	0.1	4.2	0.0	1.4	0.1	3.3	-0.5
Jul-17	2.9	0.3	-0.1	0.0	5.1	0.5	5.6	0.7	4.0	0.4	-0.4	-0.5	0.7	-0.2
Aug-17	3.4	0.2	1.3	0.4	5.0	0.1	5.5	0.1	4.2	0.1	-0.1	0.5	1.0	0.3
Sep-17	3.9	0.6	2.4	1.3	4.9	0.2	5.4	0.1	4.10	0.1	1.9	2.1	1.6	0.1
Oct-17	3.8	0.7	2.2	0.6	4.9	0.8	5.3	0.9	4.0	0.6	2.1	0.9	2.3	0.6

\*NFNE is non-food non-energy, \*\* SPI for quintile 1. Digits 0.0\* are due to rounding off.

**Table 1.1 : Period Average and YoY % Changes of Indices (Base 2007-08)**

Index	Averages July-October % Changes			October over October % Changes		
	2017-18	2016-17	2015-16	2017	2016	2015
CPI	3.50	3.95	1.65	3.80	4.21	1.61
SPI	0.89	1.74	-0.84	2.12	1.29	-0.09
WPI	1.39	3.17	-2.99	2.27	2.80	-2.66

Figure 2: CPI Inflation MoM, Special Indices

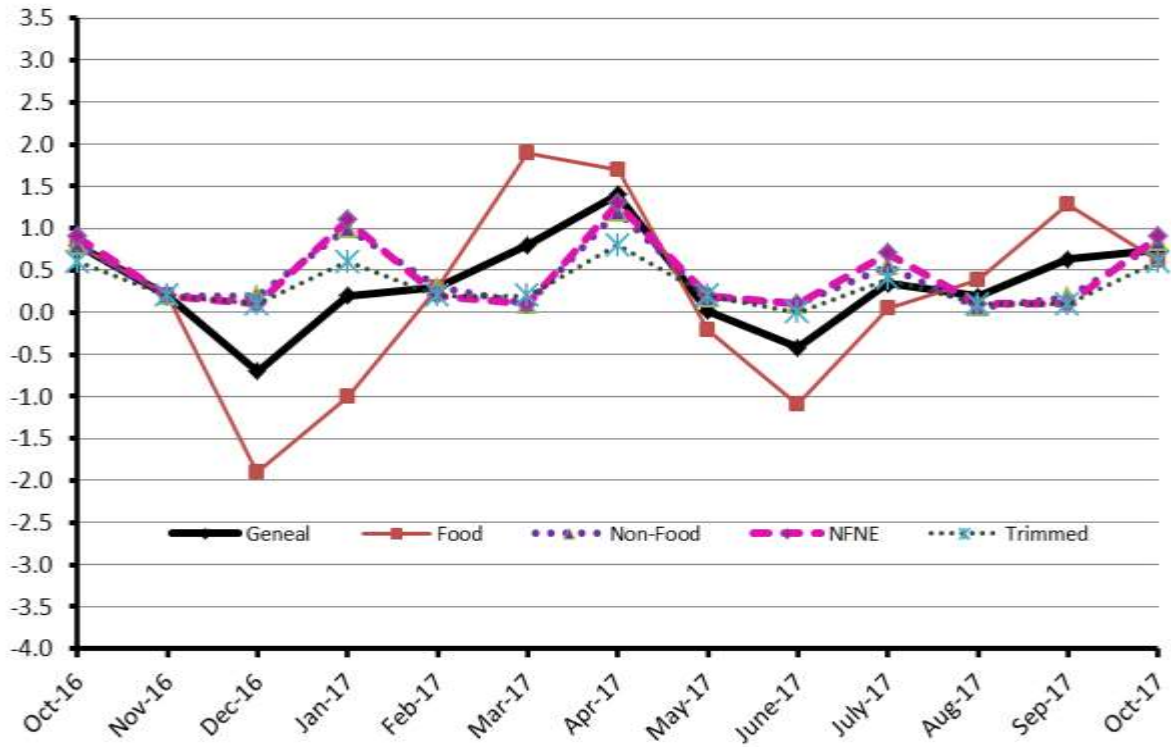
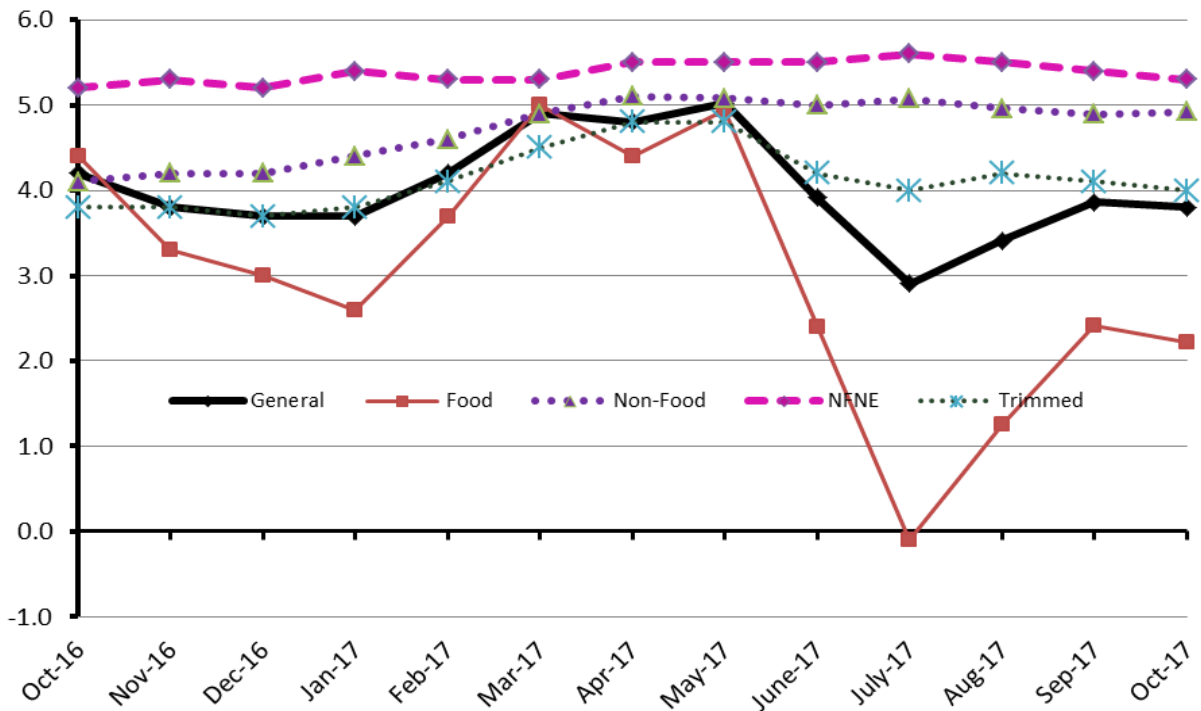


Figure 1: CPI Inflation YoY, Special Indices



## II. Consumer Price Index (CPI)

The Consumer Price Index of October 2017, is increased by 0.75% over September 2017 and increased by 3.80% over corresponding month of the last year i.e. October 2016.

**Table 2 : Consumer Price Index by Group of Commodities and Services (Base 2007-08)**

No	Group	Group Weight (%)	Indices			% Change October 2017 Over		Impact (In % points) October 2017 Over	
			Oct 2017	Sep 2017	Oct 2016	Sep 2017	Oct 2016	Sep 2017	Oct 2016
	General	<b>100.00</b>	<b>219.61</b>	<b>217.98</b>	<b>211.57</b>	<b>0.75</b>	<b>3.80</b>	<b>0.75</b>	<b>3.80</b>
1.	Food & Non-alcoholic Bev.	34.83	235.69	234.23	228.30	0.62	3.24	0.23	1.22
	Non-perishable Food Items	29.84	226.27	225.49	224.52	0.35	0.78	0.11	0.25
	Perishable Food Items	4.99	292.08	286.53	250.94	1.94	16.39	0.13	0.97
2.	Alcoholic Bev. & Tobacco	1.41	305.31	304.80	364.39	0.17	-16.21	0.00	-0.39
3.	Clothing & Footwear	7.57	239.94	239.52	231.18	0.18	3.79	0.01	0.31
4.	Housing, Water, Electricity, Gas & Fuels	29.41	200.90	198.95	191.56	0.98	4.88	0.26	1.30
5.	Furnishing & Household Equipment Maintenance	4.21	229.47	229.10	222.66	0.16	3.06	0.01	0.14
6.	Health	2.19	214.27	213.90	193.78	0.17	10.57	0.00	0.21
7.	Transport	7.20	177.05	175.74	170.40	0.75	3.90	0.04	0.23
8.	Communication	3.22	133.10	133.04	131.26	0.05	1.40	0.00	0.03
9.	Recreation & Culture	2.02	196.83	196.78	196.21	0.03	0.32	0.00	0.01
10.	Education	3.94	258.75	249.61	232.15	3.66	11.46	0.17	0.50
11.	Restaurants & Hotels	1.23	283.85	281.08	266.35	0.99	6.57	0.02	0.10
12.	Miscellaneous	2.76	249.67	250.11	237.26	-0.18	5.23	-0.01	0.16

Main contributors to month-on-month and year-on-year percentage changes are given below and detail is given in Annexure A.

**1. Month-on-month** Top few commodities which varied from previous month are given below:-

**Food Items Increased:** Tomatoes (31.43%), Betel Leaves & Nuts (2.57%), Potatoes (2.25%), Eggs (2.04%), Onion (1.90%), Besan (1.65%) and Gram Whole (1.59%).

**Decreased:** Pulse Mash (5.11%), Pulse Moong (2.04%), Fresh Vegetables (1.30%), Sugar (1.11%), and Fresh Fruits (1.07%).

**Non-food Items Increased:** Kerosene Oil (3.97%), Education (3.66%), Motor Fuel (1.91%), House Rent (1.34%) and Medical Tests (1.08%).

**Decreased:** Personal Equipments (0.99%).

**2. Year-on-Year:** Top few commodities which varied from previous year i.e. October 2016 are given below:-

**Food Items Increased:** Onion (178.60%), Tomatoes (70.98%), Rice (13.80%), Potatoes (12.16%), Tea (11.08%), Meat (7.49%), Betel Leaves & Nuts (6.94%), Eggs (6.72%), Readymade Food (6.57%) and Honey (6.29%).

**Decreased:** Pulse Mash (26.82%), Pulse Gram (21.58%), Sugar (21.16%), Pulse Masoor (18.54%), Pulse Moong (18.02%), Chicken (16.68%), Cigarettes (16.46%), Besan (14.28%) and Gur (9.71%).

**Non-food Items Increased:** Drugs & Medicines (15.68%), Education (11.46%), Motor Fuel (9.69%), Construction wage Rates (7.10%), Tailoring (7.10%), House Rent (6.49%), Cleaning and Laundry (6.39%), Medical Tests (6.23%) and Doctor (MBBS) Clinic Fee (5.74%).

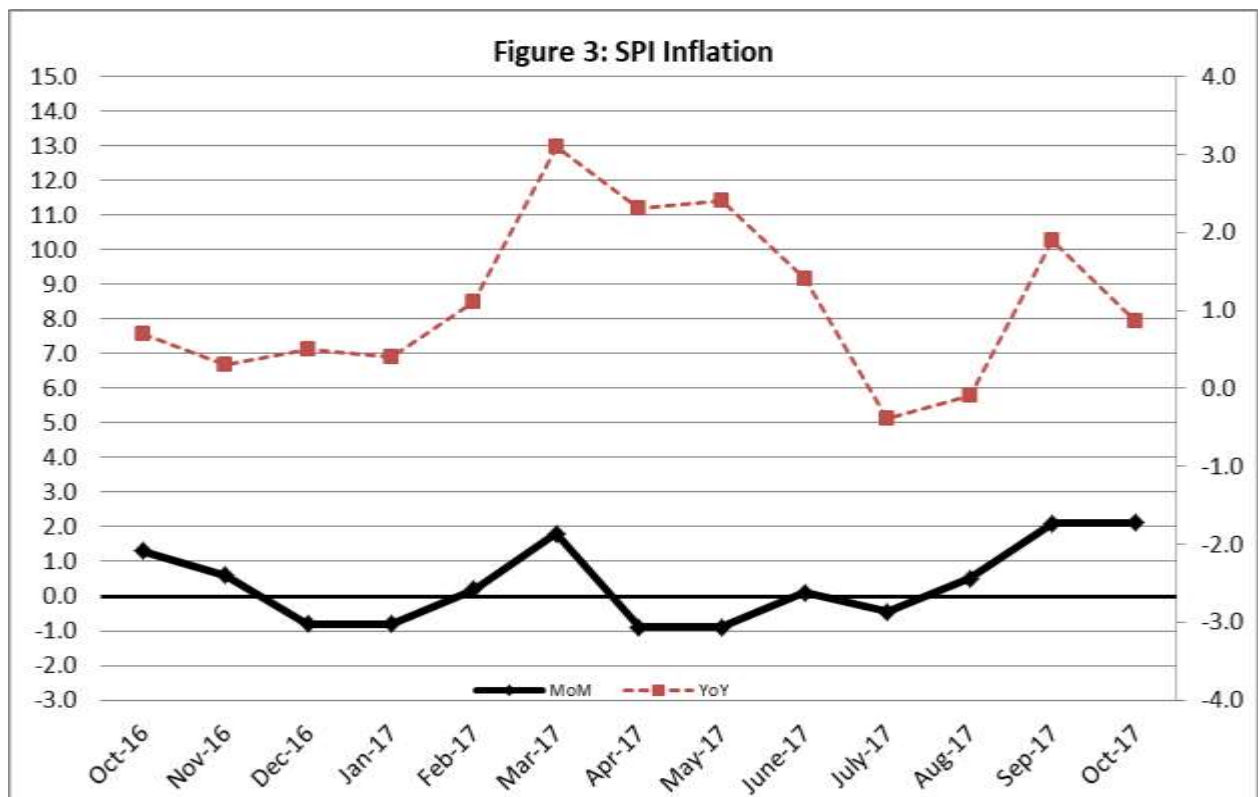
**Decreased:** Recreation & Culture (0.31%).

### III. Sensitive Price Indicator

Quintile-wise percentage changes YoY and MoM are given below in Table 3. The series from October 2016 to October 2017 is also graphed below in Figure 3.

Table 3: Sensitive Price Indicator (Base 2007-08)					
Quintiles	Indices			% Change October 2017 over	
	October 2017	September 2017	October 2016	September 2017	October 2016
1	216.20	214.35	211.71	0.86	2.12
2	223.62	221.82	218.95	0.81	2.13
3	224.77	222.98	219.81	0.80	2.26
4	228.71	226.93	224.20	0.78	2.01
5	225.15	223.41	220.42	0.78	2.15
Combined	225.15	223.38	220.11	0.79	2.29

Table 3.1 : Weekly Percentage Change of SPI During September-17				
Quintiles	% Change with Previous week			
	5 <sup>th</sup> Oct-2017	12 <sup>th</sup> Oct-2017	19 <sup>th</sup> Oct -2017	26 <sup>th</sup> Oct -2017
Quantile 1	0.18	-0.69	0.46	0.09
Combined	0.28	-0.72	0.46	0.05



## IV. Wholesale Price Index

The Wholesale Price Index for October, 2017 increased by 0.61% over September, 2017. It increased by 2.27% over the corresponding month of the last year. YoY and MoM movements, from October, 2016 to October, 2017 are also graphed below in Figure 4.

**Table 4 : Wholesale Price Index by Group of Commodities (Base 2007-08)**

No.	Group	Group Weight (%)	Indices			% Change October, 2017 over		Impact (in %age points) October, 2017 over	
			Oct. 2017	Sept. 2017	Oct. 2016	Sept. 2017	Oct. 2016	Sept. 2017	Oct. 2016
	<b>General</b>	<b>100.00</b>	<b>219.41</b>	<b>218.08</b>	<b>214.53</b>	<b>0.61</b>	<b>2.27</b>	<b>0.61</b>	<b>2.27</b>
1.	Agriculture, Forestry & Fishery Products	25.77	254.45	252.05	247.04	0.95	3.00	0.28	0.89
2.	Ores & Minerals, Electricity, Gas & Water	12.04	242.97	242.68	242.01	0.12	0.40	0.02	0.05
3.	Food Products, Beverages & Tobacco, Textiles, Apparel & Leather Products	31.11	226.01	225.30	224.34	0.32	0.74	0.10	0.24
	i. Food Products, Bev. & Tobacco	20.07	236.32	235.42	237.74	0.38	-0.60	0.08	-0.13
	ii. Textiles and Apparel	10.33	207.78	207.40	200.01	0.18	3.88	0.02	0.37
	iii. Leather Products	0.71	199.75	199.75	199.75	0.00	0.00	0.00	0.00
4.	Other Transportable Goods except Metal Products, Machinery & Equipment	22.37	173.59	171.64	165.08	1.14	5.16	0.20	0.89
5.	Metal Products, Machinery & Equipment	8.72	177.34	177.12	172.38	0.12	2.88	0.01	0.20

Main contributors to month-on-month and year-on-year percentage changes are given below and detail is given in Annexure B.

1. **Month-on-month** Top few commodities which varied from previous month i.e. September, 2017 are given below:-

**Increased:** Kerosene Oil (9.12%), Vegetables (7.80%), Furnace Oil (6.53%), Hides & Fur Skins (4.75%), Quilts (4.35%), Eggs (4.22%), Dry Fruits (3.75%), Diesel (3.44%), Petrol (2.80%), Fish (2.36%), Other Oil Seeds (2.21%), Wheat (2.06%), Jowar (1.92%), Oil Cakes (1.55%), Wheat Flour (1.46%), Fresh Fruits (1.26%) and Unmanufactured Tobacco (1.23%).

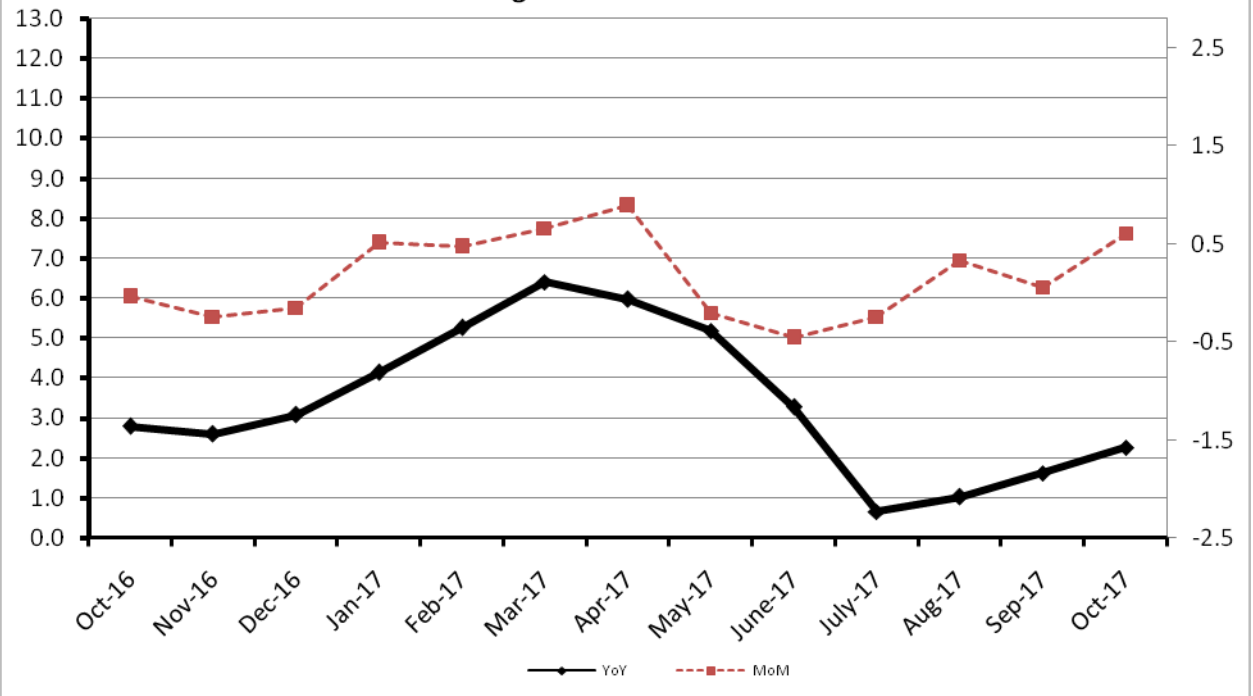
**Decreased:** Chicken (20.96%), Sugar (2.41%), Insecticides (2.37%), Cement (1.97%), Dairy Products (1.75%), Potatoes (1.69%) and Chemicals (1.63%).

2. **Year-on-year** Top few commodities which varied from previous year i.e. October, 2016 are given below:-

**Increased:** Furnace Oil (29.66%), Stimulant & Spice Crops (24.07%), Vegetables (23.80%), Steel Bar & Sheets (16.22%), Rice (14.78%), Motor Spirit (14.37%), Unmanufactured Tobacco (14.10%), Hard Board (13.68%) and Dried Fruits & Nuts (11.92%).

**Decreased:** Tobacco Products (26.82%), Other Cereal Flour (26.47%), Sugar (22.02%), Jowar (16.27%), Hides & Fur Skins (15.68%), Pulses (14.89%) and Bajra (12.23%).

Figure 4: WPI Inflation





## Annexure A:CPI by Commodity Groups and Commodities (2007-08=100)

Item and Specification	Weight	Index Numbers			% Change in Oct 2017 over			
		Oct 2017	Sep 2017	Oct 2016	Sep 2017	Oct 2016		
<b><i>General</i></b>	<b>100.0000</b>	<b>219.61</b>	<b>217.98</b>	<b>211.57</b>	<b>+</b>	<b>0.75</b>	<b>+</b>	<b>3.80</b>
<b><i>Food and non-alcoholic Beverages</i></b>	<b>34.8343</b>	<b>235.69</b>	<b>234.23</b>	<b>228.30</b>	<b>+</b>	<b>0.62</b>	<b>+</b>	<b>3.24</b>
1 Wheat	0.3477	197.74	194.80	202.60	+	1.51	-	2.40
2 Wheat Flour	4.1648	207.43	204.81	211.25	+	1.28	-	1.81
3 Wheat Product	0.0959	213.11	213.67	217.29	-	0.26	-	1.92
4 Besan	0.1500	280.66	276.11	327.42	+	1.65	-	14.28
5 Rice	1.5821	182.85	182.86	160.67	-	0.01	+	13.80
6 Cereals	0.1563	257.39	255.64	250.57	+	0.68	+	2.72
7 Bakery & Confectionary	1.1550	219.29	218.99	215.50	+	0.14	+	1.76
8 Nimco	0.4574	256.68	255.84	249.01	+	0.33	+	3.08
9 Meat	2.4303	284.72	283.65	264.87	+	0.38	+	7.49
10 Chicken	1.3596	151.20	150.63	181.47	+	0.38	-	16.68
11 Fish	0.2970	214.23	215.33	216.30	-	0.51	-	0.96
12 Milk Fresh	6.6800	277.04	276.04	266.40	+	0.36	+	3.99
13 Milk Products	0.6338	268.10	267.30	256.84	+	0.30	+	4.38
14 Milk Powder	0.1129	235.75	234.64	237.25	+	0.47	-	0.63
15 Eggs	0.4555	209.55	205.37	196.35	+	2.04	+	6.72
16 Mustard Oil	0.0952	161.44	160.21	153.72	+	0.77	+	5.02
17 Cooking Oil	1.7538	138.35	138.10	133.71	+	0.18	+	3.47
18 Vegetable Ghee	2.0714	143.26	143.03	138.08	+	0.16	+	3.75
19 Dry Fruits	0.2543	265.47	263.91	261.23	+	0.59	+	1.62
20 Fresh Fruits	1.8649	235.56	238.11	229.34	-	1.07	+	2.71
21 Pulse Masoor	0.2712	172.34	171.56	211.56	+	0.45	-	18.54
22 Pulse Moong	0.2336	231.93	236.76	282.92	-	2.04	-	18.02
23 Pulse Mash (Washed)	0.2098	255.52	269.29	349.16	-	5.11	-	26.82
24 Pulse Gram	0.2361	275.63	275.47	351.48	+	0.06	-	21.58
25 Gram Whole	0.1616	297.03	292.37	305.15	+	1.59	-	2.66
26 Beans	0.0269	244.14	242.94	232.30	+	0.49	+	5.10
27 Potatoes	0.4598	273.63	267.60	243.97	+	2.25	+	12.16
28 Onion	0.5239	491.92	482.74	176.57	+	1.90	+	178.60
29 Tomatoes	0.4318	337.71	256.96	197.51	+	31.43	+	70.98
30 Fresh Vegetables	1.7105	287.98	291.76	309.96	-	1.30	-	7.09
31 Sugar	1.0445	197.79	200.00	250.89	-	1.11	-	21.16
32 Gur	0.0220	263.15	261.22	291.45	+	0.74	-	9.71
33 Honey	0.0446	334.28	332.15	314.49	+	0.64	+	6.29
34 SweetMeat	0.2483	253.94	253.51	245.36	+	0.17	+	3.50
35 Beverages	1.1990	226.52	226.34	219.47	+	0.08	+	3.21
36 Jam, Tomato Ketchup & Pickles	0.2454	221.97	220.13	215.72	+	0.84	+	2.90
37 Condiments	0.2656	273.37	271.56	263.47	+	0.67	+	3.76
38 Spices	0.5441	239.11	238.80	239.79	+	0.13	-	0.28
39 Tea	0.8377	283.79	284.10	255.49	-	0.11	+	11.08
<b><i>Alcoholic Beverages, Tobacco</i></b>	<b>1.4135</b>	<b>305.31</b>	<b>304.80</b>	<b>364.39</b>	<b>+</b>	<b>0.17</b>	<b>-</b>	<b>16.21</b>
40 Cigarettes	1.3906	306.09	305.67	366.41	+	0.14	-	16.46
41 Betel Leaves & Nuts	0.0229	258.40	251.93	241.62	+	2.57	+	6.94
<b><i>Clothing and footwear</i></b>	<b>7.5708</b>	<b>239.94</b>	<b>239.52</b>	<b>231.18</b>	<b>+</b>	<b>0.18</b>	<b>+</b>	<b>3.79</b>
42 Cotton Cloth	1.7286	233.43	232.67	225.34	+	0.33	+	3.59
43 Woolen Cloth	0.8759	258.28	257.77	247.41	+	0.20	+	4.39
44 Readymade Garments	0.9739	248.07	247.97	237.88	+	0.04	+	4.28
45 Woolen Readymade Garments	0.3964	259.47	259.27	253.35	+	0.08	+	2.42
46 Hosiery	0.5094	252.12	251.70	243.74	+	0.17	+	3.44

## Annexure A:CPI by Commodity Groups and Commodities (2007-08=100)

Item and Specification	Weight	Index Numbers			% Change in Oct 2017 over			
		Oct 2017	Sep 2017	Oct 2016	Sep 2017	Oct 2016		
47 Dopatta	0.4412	246.72	246.66	241.74	+	0.02	+	2.06
48 Cleaning and Laundry	0.2110	272.90	272.37	256.52	+	0.19	+	6.39
49 Tailoring	0.8840	325.55	324.65	303.96	+	0.28	+	7.10
50 Footwear	1.5504	167.50	167.46	166.58	+	0.02	+	0.55
<b><u>Housing, water, Elec., Gas and other fuels</u></b>	<b>29.4149</b>	<b>200.90</b>	<b>198.95</b>	<b>191.56</b>	<b>+</b>	<b>0.98</b>	<b>+</b>	<b>4.88</b>
51 House Rent	21.8149	194.05	191.49	182.22	+	1.34	+	6.49
52 Construction Input Items	0.5623	257.07	255.47	247.86	+	0.63	+	3.72
53 Construction Wage Rates	0.3331	246.85	245.96	230.48	+	0.36	+	7.10
54 Water Supply	0.4971	171.58	171.58	163.38	+	0.00	+	5.02
55 Electricity	4.3985	238.10	238.10	238.10	+	0.00	+	0.00
56 Gas	1.5756	158.08	158.08	158.08	+	0.00	+	0.00
57 Kerosene Oil	0.0057	206.26	198.39	195.65	+	3.97	+	5.42
58 Firewood Whole	0.2277	293.20	291.34	284.35	+	0.64	+	3.11
<b><u>Furnishing and household equipment</u></b>	<b>4.2082</b>	<b>229.47</b>	<b>229.10</b>	<b>222.66</b>	<b>+</b>	<b>0.16</b>	<b>+</b>	<b>3.06</b>
59 Furniture	0.3315	221.60	220.81	212.40	+	0.36	+	4.33
60 Household Textiles	0.6489	232.05	231.08	223.69	+	0.42	+	3.74
61 Household Equipment	0.5936	183.44	183.36	179.23	+	0.04	+	2.35
62 Utensils	0.3212	235.07	234.34	224.01	+	0.31	+	4.94
63 Plastic Products	0.2547	213.86	213.05	207.19	+	0.38	+	3.22
64 Washing Soaps & Detergents	0.7893	233.12	232.92	229.21	+	0.09	+	1.71
65 Sewing Needle & Dr Cell	0.1496	209.49	209.49	201.34	+	0.00	+	4.05
66 Household Servant	1.0432	257.30	257.30	249.98	+	0.00	+	2.93
67 Marriage Hall Charges	0.0762	249.20	249.20	243.15	+	0.00	+	2.49
<b><u>Health</u></b>	<b>2.1868</b>	<b>214.27</b>	<b>213.90</b>	<b>193.78</b>	<b>+</b>	<b>0.17</b>	<b>+</b>	<b>10.57</b>
68 Drugs & Medicines	1.2667	185.84	185.75	160.65	+	0.05	+	15.68
69 Medical Equipments	0.0080	253.63	253.35	245.33	+	0.11	+	3.38
70 Doctor (MBBS) Clinic Fee	0.5904	282.22	282.22	266.89	+	0.00	+	5.74
71 Medical Tests	0.3217	200.53	198.38	188.77	+	1.08	+	6.23
<b><u>Transport</u></b>	<b>7.2023</b>	<b>177.05</b>	<b>175.74</b>	<b>170.40</b>	<b>+</b>	<b>0.75</b>	<b>+</b>	<b>3.90</b>
72 Motor Vehicles	0.6630	177.56	176.88	170.94	+	0.38	+	3.87
73 Motor Vehicle Accessories	0.2439	214.38	213.57	213.17	+	0.38	+	0.57
74 Motor Fuel	3.0269	149.58	146.77	136.36	+	1.91	+	9.69
75 Mechanical Service	0.4552	232.74	232.07	227.63	+	0.29	+	2.24
76 Motor Vehicle Tax	0.1099	210.18	210.18	210.18	+	0.00	+	0.00
77 Transport Services	2.7034	193.59	193.59	193.28	+	0.00	+	0.16
<b><u>Communication</u></b>	<b>3.2198</b>	<b>133.10</b>	<b>133.04</b>	<b>131.26</b>	<b>+</b>	<b>0.05</b>	<b>+</b>	<b>1.40</b>
78 Postal Services	0.0662	251.59	250.69	243.32	+	0.36	+	3.40
79 Communication & Apparatus	3.1536	130.61	130.57	128.91	+	0.03	+	1.32
<b><u>Recreation and culture</u></b>	<b>2.0227</b>	<b>196.83</b>	<b>196.78</b>	<b>196.21</b>	<b>+</b>	<b>0.03</b>	<b>+</b>	<b>0.32</b>
80 Recreation & Culture	0.8634	129.49	129.49	129.89	+	0.00	-	0.31
81 Text Books	0.5706	287.98	287.98	292.41	+	0.00	-	1.51
82 Newspapers	0.1934	184.01	183.76	175.49	+	0.14	+	4.85
83 Stationery	0.3953	218.60	218.46	212.35	+	0.06	+	2.94
<b><u>Education</u></b>	<b>3.9431</b>	<b>258.75</b>	<b>249.61</b>	<b>232.15</b>	<b>+</b>	<b>3.66</b>	<b>+</b>	<b>11.46</b>
84 Education	3.9431	258.75	249.61	232.15	+	3.66	+	11.46
<b><u>Restaurants and hotels</u></b>	<b>1.2286</b>	<b>283.85</b>	<b>281.08</b>	<b>266.35</b>	<b>+</b>	<b>0.99</b>	<b>+</b>	<b>6.57</b>
85 Readymade Food	1.2286	283.85	281.08	266.35	+	0.99	+	6.57
<b><u>Misc. goods and services</u></b>	<b>2.7550</b>	<b>249.67</b>	<b>250.11</b>	<b>237.26</b>	<b>-</b>	<b>0.18</b>	<b>+</b>	<b>5.23</b>
86 Personal Care	1.4935	231.11	230.31	218.58	+	0.35	+	5.73
87 Cosmetics	0.3853	206.22	205.83	200.19	+	0.19	+	3.01
88 Blades	0.0322	197.94	197.94	195.43	+	0.00	+	1.28
89 Personal Equipments	0.8440	304.32	307.36	288.83	-	0.99	+	5.36

## Annexure B: Wholesale Price Indices by Major Groups &amp; Commodities (2007-08=100)

Item and Specification	Weight	Index Numbers			% Change in Oct 2017 over	
		Oct 17	Sep 17	Oct 16	Sep 2017	Oct 2016
<b>General</b>	<b>100.0000</b>	<b>219.41</b>	<b>218.08</b>	<b>214.53</b>	<b>+ 0.61</b>	<b>+ 2.27</b>
<b>Agriculture Forestry &amp; Fisher</b>	<b>25.7674</b>	<b>254.45</b>	<b>252.05</b>	<b>247.04</b>	<b>+ 0.95</b>	<b>+ 3.00</b>
001 Wheat	0.6297	200.05	196.01	209.05	+ 2.06	- 4.31
002 Maize	0.6764	191.03	191.42	190.54	- 0.20	+ 0.26
003 Rice	2.4413	169.62	168.67	147.78	+ 0.56	+ 14.78
004 Sorghum / Jowar	0.0214	216.04	211.96	258.01	+ 1.92	- 16.27
005 Millet / Bajra	0.0374	160.38	160.05	182.73	+ 0.21	- 12.23
006 Vegetables	1.2441	431.44	400.21	348.51	+ 7.80	+ 23.80
007 Fresh Fruits	1.5144	257.11	253.92	248.10	+ 1.26	+ 3.63
008 Dry Fruits	0.2478	243.99	235.18	244.62	+ 3.75	- 0.26
009 Cotton Seeds	1.1511	260.64	260.12	255.71	+ 0.20	+ 1.93
010 Other Oil Seeds	0.0722	190.07	185.96	174.88	+ 2.21	+ 8.69
011 Edible Roots / Potatoes	0.2540	266.89	271.48	250.44	- 1.69	+ 6.57
012 Stimulant & Spice Crops	0.1634	292.37	294.09	235.64	- 0.58	+ 24.07
013 Pulses	0.4901	263.60	263.85	309.70	- 0.09	- 14.89
014 Sugar Crops	1.0725	268.94	268.94	293.89	+ 0.00	- 8.49
015 Fibre Crops	5.3169	198.59	199.67	195.52	- 0.54	+ 1.57
016 Unmanufactured Tobacco	0.0742	296.90	293.30	260.21	+ 1.23	+ 14.10
017 Poultry	0.5633	178.79	226.19	190.04	- 20.96	- 5.92
018 Raw Milk from Bovine Animals	7.0279	272.70	269.94	265.22	+ 1.02	+ 2.82
019 Eggs	0.5034	213.03	204.41	196.73	+ 4.22	+ 8.29
020 Raw Animal Materials / Wool	0.0351	173.18	172.91	173.89	+ 0.16	- 0.41
021 Hides & Fur Skins, Raw	0.4834	103.25	98.57	122.45	+ 4.75	- 15.68
022 Fuel Wood in Logs	0.0179	282.69	279.63	264.77	+ 1.09	+ 6.77
023 Fish Live Fresh or Chilled	1.7295	450.77	440.36	455.08	+ 2.36	- 0.95
<b>Ores/Minerals, Elec., Gas &amp; W</b>	<b>12.0389</b>	<b>242.97</b>	<b>242.68</b>	<b>242.01</b>	<b>+ 0.12</b>	<b>+ 0.40</b>
024 Coal not Agglomerated	0.7508	155.29	155.29	152.94	+ 0.00	+ 1.54
025 Natural Gas Liquified	5.7385	211.29	210.69	209.52	+ 0.28	+ 0.84
026 Salt & Pure Sodium Chloride	0.0584	248.46	248.46	254.33	+ 0.00	- 2.31
027 Electrical Energy	5.4912	288.00	288.00	288.00	+ 0.00	+ 0.00
<b>Food, Beverages, Tobacco, Textil</b>	<b>31.1122</b>	<b>226.01</b>	<b>225.30</b>	<b>224.34</b>	<b>+ 0.32</b>	<b>+ 0.74</b>
<b>Food Products, Beverages &amp;</b>	<b>20.0718</b>	<b>236.32</b>	<b>235.42</b>	<b>237.74</b>	<b>+ 0.38</b>	<b>- 0.60</b>
028 Meat of Animals	3.4559	306.11	304.31	279.82	+ 0.59	+ 9.40
029 Vegetables & Fruit Juice	0.0058	224.22	224.22	209.83	+ 0.00	+ 6.86
030 Dried Fruits & Nuts	0.1733	269.70	268.09	240.98	+ 0.60	+ 11.92
031 Fruit Juices	0.3880	182.53	182.36	183.53	+ 0.09	- 0.54
032 Vegetable Oils Refined	1.9242	155.12	154.86	151.00	+ 0.17	+ 2.73
033 Vegetable Ghee	1.5632	125.78	125.89	123.35	- 0.09	+ 1.97
034 Oil Cakes	0.9611	222.38	218.98	226.38	+ 1.55	- 1.77
035 Processed Liquid Milk	4.4437	284.79	282.01	257.57	+ 0.99	+ 10.57
036 Milk & Cream in Solid Form	0.0316	224.08	224.00	220.59	+ 0.04	+ 1.58
037 Ice Cream	0.0047	266.02	266.02	238.04	+ 0.00	+ 11.75
038 Dairy Products N.E.C	0.0117	264.15	268.85	249.21	- 1.75	+ 5.99
039 Wheat Flour	2.3034	189.87	187.13	194.90	+ 1.46	- 2.58
040 Other Cereal Flour	0.0604	226.42	227.95	307.94	- 0.67	- 26.47
041 Sugar Refined	1.7975	204.64	209.70	262.43	- 2.41	- 22.02
042 Chocolate	0.0139	100.00	100.00	99.45	+ 0.00	+ 0.55
043 Sugar Confectionary	0.0738	128.44	128.44	128.15	+ 0.00	+ 0.23
044 Coffee & Tea	0.7303	253.21	255.28	230.56	- 0.81	+ 9.82
045 Spices	0.1449	202.06	201.92	190.17	+ 0.07	+ 6.25
046 Other Food Products	0.0336	294.50	294.50	293.85	+ 0.00	+ 0.22
047 Mineral Water	0.0207	208.51	206.35	197.57	+ 1.05	+ 5.54
048 Beverages	0.6303	172.85	172.85	172.33	+ 0.00	+ 0.30
049 Tobacco Products	1.2998	318.37	318.37	435.03	+ 0.00	- 26.82
<b>Textiles &amp; Apparels</b>	<b>10.3289</b>	<b>207.78</b>	<b>207.40</b>	<b>200.01</b>	<b>+ 0.18</b>	<b>+ 3.88</b>
050 Cotton Yarn	5.2491	202.18	201.61	191.17	+ 0.28	+ 5.76
051 Nylon Yarn	0.1719	143.99	143.99	143.99	+ 0.00	+ 0.00
052 Blended Yarn	0.1689	184.65	183.55	179.64	+ 0.60	+ 2.79
053 Woven Fabrics	0.0128	316.28	316.28	286.46	+ 0.00	+ 10.41
054 Cotton Fabrics	0.6343	211.50	211.47	209.09	+ 0.01	+ 1.15
055 Other Fabrics	1.1016	227.16	227.16	224.29	+ 0.00	+ 1.28
056 Silk & Reyon Fabrics	0.7350	188.14	188.14	190.96	+ 0.00	- 1.48
057 Towels	0.1235	276.14	276.14	267.20	+ 0.00	+ 3.35
058 Blankets	0.0029	247.38	247.52	247.38	- 0.06	+ 0.00

## Annexure B: Wholesale Price Indices by Major Groups &amp; Commodities (2007-08=100)

Item and Specification	Weight	Index Numbers			% Change in Oct 2017 over	
		Oct 17	Sep 17	Oct 16	Sep 2017	Oct 2016
059 Bed Sheets	0.0913	256.87	256.87	257.96	+ 0.00	- 0.42
060 Quilts	0.0019	222.32	213.05	199.16	+ 4.35	+ 11.63
061 Woolen Carpets	0.0383	196.43	196.43	196.43	+ 0.00	+ 0.00
062 Synthetic Carpets	0.0566	130.95	130.95	129.25	+ 0.00	+ 1.32
063 Hosiery Products	0.8832	244.11	243.31	225.43	+ 0.33	+ 8.29
064 Readymade Garments	1.0576	201.37	201.37	200.44	+ 0.00	+ 0.46
<b>Leather Products</b>	<b>0.7115</b>	<b>199.75</b>	<b>199.75</b>	<b>199.75</b>	<b>+ 0.00</b>	<b>+ 0.00</b>
065 Leather Without Hair	0.2973	221.97	221.97	221.97	+ 0.00	+ 0.00
066 Other Leather N.E.C	0.2567	207.31	207.31	207.31	+ 0.00	+ 0.00
067 Footwears	0.1575	145.51	145.51	145.51	+ 0.00	+ 0.00
<b>Other Transportable Goods</b>	<b>22.3659</b>	<b>173.59</b>	<b>171.64</b>	<b>165.08</b>	<b>+ 1.14</b>	<b>+ 5.16</b>
068 Timber	0.0165	231.53	231.53	224.68	+ 0.00	+ 3.05
069 Printing Paper	0.4279	166.31	166.60	164.90	- 0.17	+ 0.86
070 Hard Board	0.1579	225.00	225.00	197.92	+ 0.00	+ 13.68
071 Coke	0.2797	163.45	163.45	163.45	+ 0.00	+ 0.00
072 Motor Spirit	1.5336	124.14	120.76	108.54	+ 2.80	+ 14.37
073 Diesel Oil	5.2664	155.86	150.68	144.34	+ 3.44	+ 7.98
074 Kerosine Oil	0.2151	127.80	117.12	115.11	+ 9.12	+ 11.02
075 Furnace Oil	3.2664	110.73	103.94	85.40	+ 6.53	+ 29.66
076 Mobil Oil	0.7114	200.23	201.29	195.35	- 0.53	+ 2.50
077 Chemicals	1.7720	177.12	180.05	177.41	- 1.63	- 0.16
078 Dyeing Material	0.1539	146.55	146.55	146.55	+ 0.00	+ 0.00
079 Fertilizers	2.8657	216.49	216.26	221.56	+ 0.11	- 2.29
080 Pesticides	0.2763	306.92	306.92	308.79	+ 0.00	- 0.61
081 Insecticides	0.1276	138.62	141.98	135.58	- 2.37	+ 2.24
082 Paints & Varnishes	0.1916	299.42	298.67	295.36	+ 0.25	+ 1.37
083 Medicines	1.1428	176.89	176.72	168.17	+ 0.10	+ 5.19
084 Soaps & Detergents	0.8168	191.45	191.45	187.54	+ 0.00	+ 2.08
085 Auto Tyres	0.2703	177.07	177.07	181.83	+ 0.00	- 2.62
086 Plastic Products	0.4550	225.88	225.88	228.35	+ 0.00	- 1.08
087 Glass sheets	0.2089	298.97	298.97	282.43	+ 0.00	+ 5.86
088 Other Glass Articles	0.1635	317.24	317.24	299.07	+ 0.00	+ 6.08
089 Ceramics & Sanitary Fixture	0.0244	232.65	232.65	233.48	+ 0.00	- 0.36
090 Bricks, Blocks & Tiles	0.1566	222.47	221.69	218.83	+ 0.35	+ 1.66
091 Cement	1.8145	217.15	221.52	212.72	- 1.97	+ 2.08
092 Bed Foam	0.0006	170.33	170.33	160.50	+ 0.00	+ 6.12
093 Matches	0.0505	171.36	171.36	162.62	+ 0.00	+ 5.37
<b>Metal Product, Machinery &amp; Eq</b>	<b>8.7156</b>	<b>177.34</b>	<b>177.12</b>	<b>172.38</b>	<b>+ 0.12</b>	<b>+ 2.88</b>
094 Pig Iron	0.0593	128.97	128.97	128.97	+ 0.00	+ 0.00
095 Steel Bar & Sheets	1.4022	139.70	138.84	120.20	+ 0.62	+ 16.22
096 Pipe Fittings	0.0780	215.66	215.66	193.63	+ 0.00	+ 11.38
097 Steel Products	0.3879	179.41	177.56	177.06	+ 1.04	+ 1.33
098 Engines & Motors	0.0046	116.98	116.98	109.24	+ 0.00	+ 7.09
099 Vacuum Pumps	0.0155	123.69	123.69	114.95	+ 0.00	+ 7.60
100 Air Conditioners	0.0049	200.10	200.10	201.18	+ 0.00	- 0.54
101 Cultivators	0.0551	190.66	190.66	190.66	+ 0.00	+ 0.00
102 Chuff Cutter	0.1293	153.46	153.46	149.20	+ 0.00	+ 2.86
103 Tractors	0.0028	201.75	201.75	201.75	+ 0.00	+ 0.00
104 Lathe Machines	0.0525	241.06	241.06	241.06	+ 0.00	+ 0.00
105 Concrete Mixture	0.0107	138.83	138.83	138.83	+ 0.00	+ 0.00
106 Fridge,WashM,SewM,Fans,Iron	1.1645	214.97	214.97	204.00	+ 0.00	+ 5.38
107 Electric Wires	0.0912	205.92	205.92	195.19	+ 0.00	+ 5.50
108 Lighting Equipments	1.4431	170.98	170.98	171.92	+ 0.00	- 0.55
109 Radio & Television	0.1843	140.42	140.42	140.42	+ 0.00	+ 0.00
110 Motor Vehicles	0.0244	195.36	195.36	191.39	+ 0.00	+ 2.07
111 Motorcycles	0.2570	125.89	125.89	125.89	+ 0.00	+ 0.00
112 Bicycles	3.3483	187.65	187.65	187.65	+ 0.00	+ 0.00