



# Monthly Review on Price Indices



**August, 2017**  
**(Base 2007-08)**

**Government of Pakistan**  
**Statistics Division**  
**Pakistan Bureau of Statistics**  
**Islamabad**



## Inflation in Brief

1. CPI inflation General increased by 3.4% on year-on-year basis in August 2017 as compared to an increase of 2.9% in the previous month and 3.6% in August 2016. On month-on-month basis, it increased by 0.2% in August 2017 as compared to an increase of 0.3% in the previous month and a decrease of 0.3% in August 2016.
2. Core inflation measured by non-food non-energy CPI (Core NFNE) increased by 5.5% on (YoY) basis in August 2017 as compared to an increase of 5.6% in the previous month and 4.6% in August 2016. On (MoM) basis, it increased by 0.1% in August 2017 as compared to increase of 0.7% in previous month, and an increase of 0.2% in corresponding month of last year i.e. August 2016.
3. Core inflation, measured by 20% weighted trimmed mean CPI (Core Trimmed) increased by 4.2% on (YoY) basis in August 2017 as compared to 4.0% in the previous month and by 3.5% in August 2016. On (MoM) basis, it increased by 0.1% in August 2017 as compared to an increase of 0.4% in the previous month and an increase of 0.1% in corresponding month of last year i.e. August 2016.
4. SPI inflation on YoY decreased by 0.1% in August 2017 as compared to a decrease of 0.4% a month earlier and an increase of 2.2% in August 2016. On MoM basis, it increased by 0.5% in August 2017 as compared to a decrease of 0.5% a month earlier and an increase of 0.2% in August 2016.
5. WPI inflation on YoY basis increased by 1.0% in August 2017 as compared to an increase of 0.7% a month earlier and an increase of 3.5% in August 2016. WPI inflation on MoM basis increased by 0.3% in August 2017 as compared to a decrease of 0.2% a month earlier and an increase of 0.0% in corresponding month of last year i.e. August 2016.
6. Figures 1 and 2 show graphically the data of Table 1. Table 1.1 shows "Period Average" and "YoY" percent changes in indices of three years.

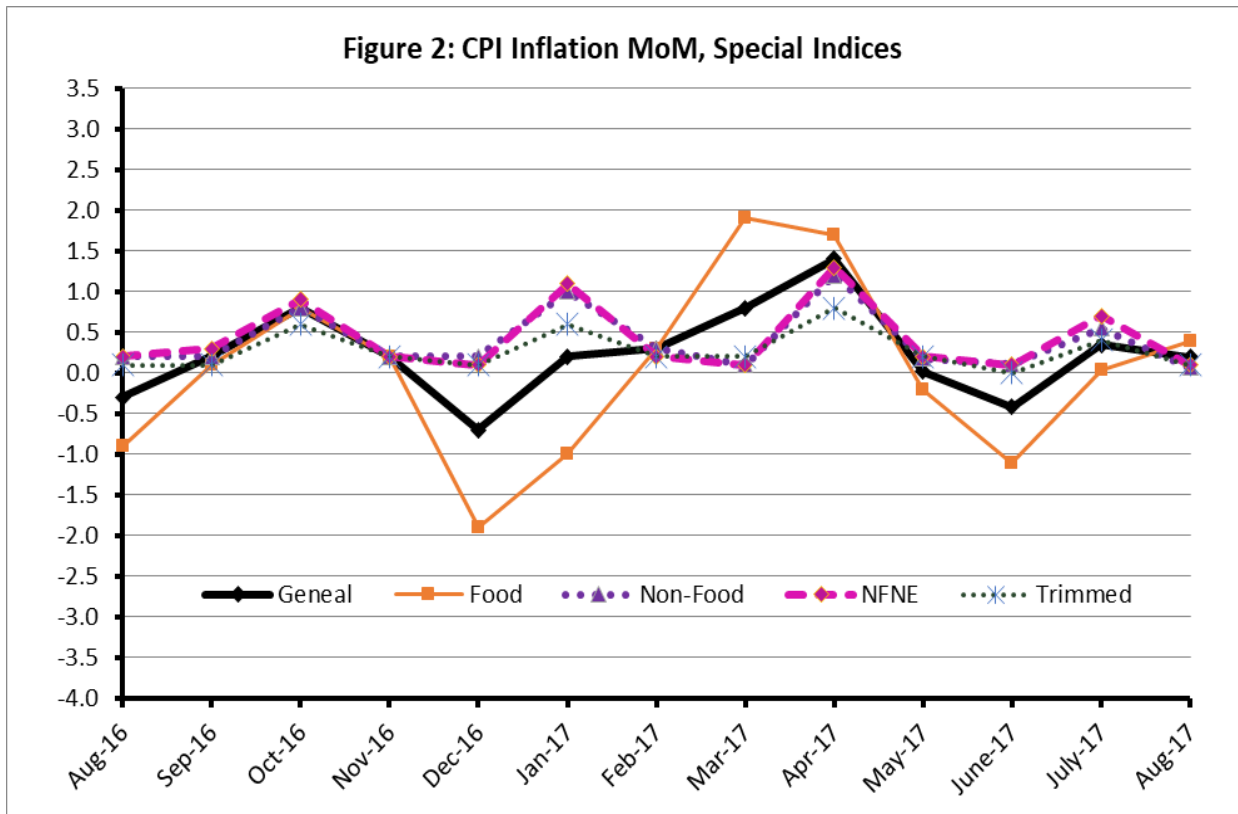
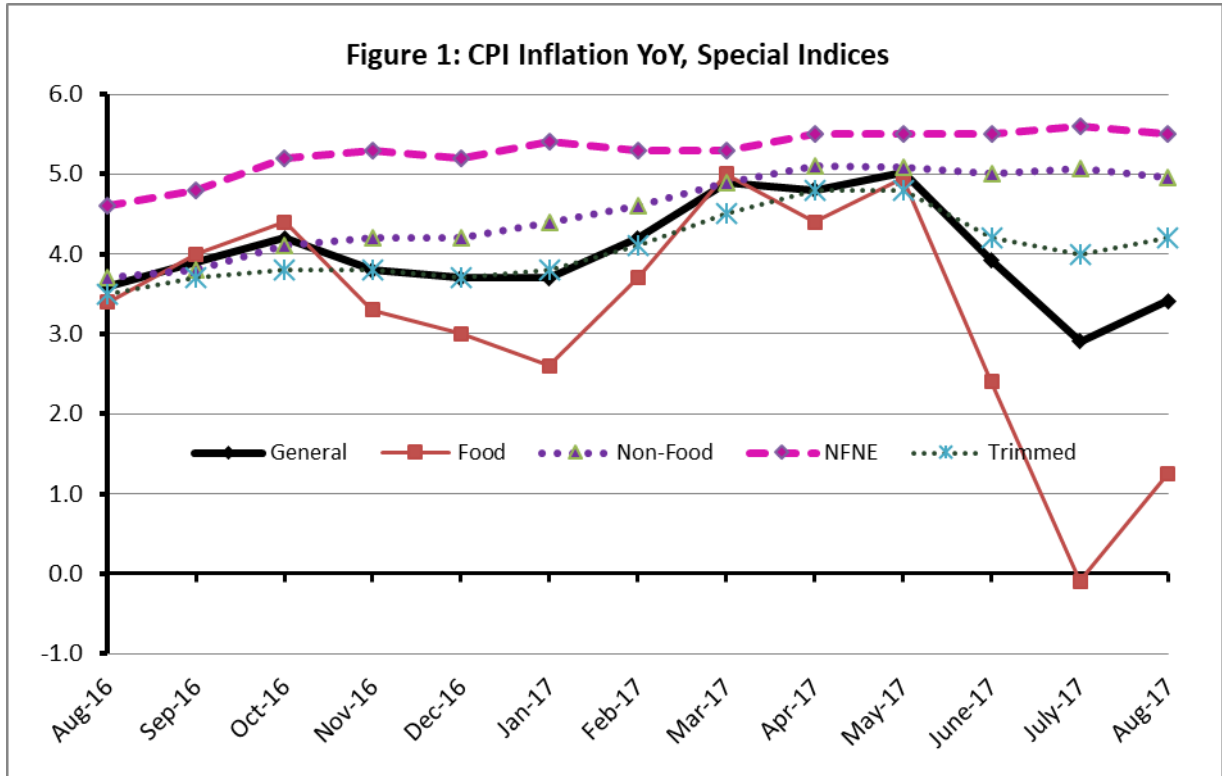
**Table 1: Inflation (%) (Base 2007-08)**

Period	CPI						Core Inflation				SPI**		WPI	
	General		Food		Non-food		NFNE*		Trimmed		YoY	MoM	YoY	MoM
	YoY	MoM	YoY	MoM	YoY	MoM	YoY	MoM	YoY	MoM				
Jul-16	4.1	1.3	4.7	2.5	3.7	0.5	4.5	0.6	3.6	0.5	1.7	1.3	3.0	2.3
Aug-16	3.6	-0.3	3.4	-0.9	3.7	0.2	4.6	0.2	3.5	0.1	2.2	0.2	3.5	0.0
Sep-16	3.9	0.2	4.0	0.1	3.8	0.2	4.8	0.3	3.7	0.1	1.8	0.1	3.4	-0.5
Oct-16	4.2	0.8	4.4	0.8	4.1	0.8	5.2	0.9	3.8	0.6	1.3	0.7	2.8	0.0
Nov-16	3.8	0.2	3.3	0.2	4.1	0.2	5.3	0.2	3.8	0.2	0.6	0.3	2.6	-0.2
Dec-16	3.7	-0.7	3.0	-1.9	4.2	0.2	5.2	0.1	3.7	0.1	0.5	-0.8	3.1	-0.1
Jan-17	3.7	0.2	2.6	-1.0	4.4	1.0	5.4	1.1	3.8	0.6	0.4	-0.8	4.2	0.5
Feb-17	4.2	0.3	3.7	0.3	4.6	0.3	5.3	0.2	4.1	0.2	1.1	0.2	5.3	0.5
Mar-17	4.9	0.8	5.0	1.9	4.9	0.1	5.3	0.1	4.5	0.2	3.1	1.8	6.4	0.7
Apr-17	4.8	1.4	4.4	1.7	5.1	1.2	5.5	1.3	4.8	0.8	2.3	-0.9	6.0	0.9
May-17	5.0	0.0	4.9	-0.2	5.1	0.2	5.5	0.2	4.8	0.2	2.4	-0.9	5.2	-0.2
Jun-17	3.9	-0.4	2.4	-1.1	5.0	0.1	5.5	0.1	4.2	0.0	1.4	0.1	3.3	-0.5
Jul-17	2.9	0.3	-0.1	0.0	5.1	0.5	5.6	0.7	4.0	0.4	-0.4	-0.5	0.7	-0.2
Aug-17	3.4	0.2	1.3	0.4	5.0	0.1	5.5	0.1	4.2	0.1	-0.1	0.5	1.0	0.3

\*NFNE is non-food non-energy, \*\* SPI for quintile 1. Digits 0.0\* are due to rounding off.

**Table 1.1 : Period Average and YoY % Changes of Indices (Base 2007-08)**

Index	Averages July-August % Changes			August over August % Changes		
	2017-18	2016-17	2015-16	2017	2016	2015
CPI	3.16	3.84	1.83	3.41	3.56	1.79
SPI	-0.24	1.94	-0.99	-0.09	2.15	-1.49
WPI	0.84	3.25	-2.91	1.02	3.52	-2.94



## II. Consumer Price Index (CPI)

The Consumer Price Index of August 2017, is increased by 0.19% over July 2017 and increased by 3.41% over corresponding month of the last year i.e. August 2016.

**Table 2 : Consumer Price Index by Group of Commodities and Services (Base 2007-08)**

No	Group	Group Weight (%)	Indices			% Change August 2017 Over		Impact (In % points) August 2017 Over	
			August 2017	July 2017	August 2016	July 2017	August 2016	July 2017	August 2016
	General	100.00	216.61	216.19	209.46	0.19	3.41	0.19	3.41
1.	Food & Non-alcoholic Bev.	34.83	230.99	229.99	225.91	0.43	2.25	0.16	0.85
	Non-perishable Food Items	29.84	227.02	226.63	223.21	0.17	1.71	0.05	0.54
	Perishable Food Items	4.99	254.75	250.05	242.04	1.88	5.25	0.11	0.30
2.	Alcoholic Bev. & Tobacco	1.41	306.25	306.67	365.41	-0.14	-16.19	0.00	-0.40
3.	Clothing & Footwear	7.57	239.19	238.66	230.14	0.22	3.93	0.02	0.33
4.	Housing, Water, Electricity, Gas & Fuels	29.41	198.93	198.88	188.91	0.03	5.30	0.01	1.41
5.	Furnishing & Household Equipment Maintenance	4.21	228.05	227.74	222.31	0.14	2.58	0.01	0.12
6.	Health	2.19	213.05	212.91	189.42	0.07	12.47	0.00	0.25
7.	Transport	7.20	174.61	175.18	170.10	-0.33	2.65	-0.02	0.16
8.	Communication	3.22	133.03	132.88	130.90	0.11	1.63	0.00	0.03
9.	Recreation & Culture	2.02	196.33	196.09	195.77	0.12	0.29	0.00	0.01
10.	Education	3.94	249.61	249.54	225.17	0.03	10.85	0.00	0.46
11.	Restaurants & Hotels	1.23	278.44	278.44	265.77	0.00	4.77	0.00	0.07
12.	Miscellaneous	2.76	248.46	247.19	237.38	0.51	4.67	0.02	0.15

Main contributors to month-on-month and year-on-year percentage changes are given below and detail is given in Annexure A.

**1. Month-on-month** Top few commodities which varied from previous month are given below:-

**Food Items Increased:** Onion (33.88%), Tomatoes (25.74%), sugar (6.93%), Eggs (2.22%), Meat (1.92%), Potatoes (1.91%), Rice (1.60%) and Fish (1.06%).

**Decreased:** Fresh fruits (5.71%), Chicken (5.58%), Pulse Mash (2.66%), Pulse Masoor (2.03%), Pulse Gram (1.96%), Pulse Moong (1.84%), Besan (1.66%) and Betel Leaves & Nuts (1.0%).

**Non-food Items Increased:** Construction wages Rate (1.17%) and Personal care (0.73%).

**Decreased:** Motor Fuel (1.08%).

**2. Year-on-Year:** Top few commodities which varied from previous year i.e. August 2016 are given below:-

**Food Items Increased:** Onion (44.08%), Chicken (14.15%), Rice (13.95%), Fresh fruits (13.65%), Tea (13.14%), Potatoes (9.74%), Meat (7.65%), Honey (6.25%), Readymade food (4.77%) and Vegetable Ghee (4.42%).

**Decreased:** Pulse Mash (27.13%), Pulse Gram (19.87%), Tomatoes (19.85%), Pulse Masoor (18.38%), Pulse Moong (18.21%), Cigarettes (16.40%), Sugar (15.56%) and Besan (14.81%).

**Non-food Items Increased:** Drugs & Medicines (18.53%), Education (10.85%), Tailoring (8.58%), Doctor (MBBS) Clinic Fee (7.87%), House Rent (7.19%), Cleaning and Laundry (7.13%), Medical Equipments (6.59%), Construction wages Rate (6.56%), Motor Fuel (6.41%) and Personal care (6.12%).

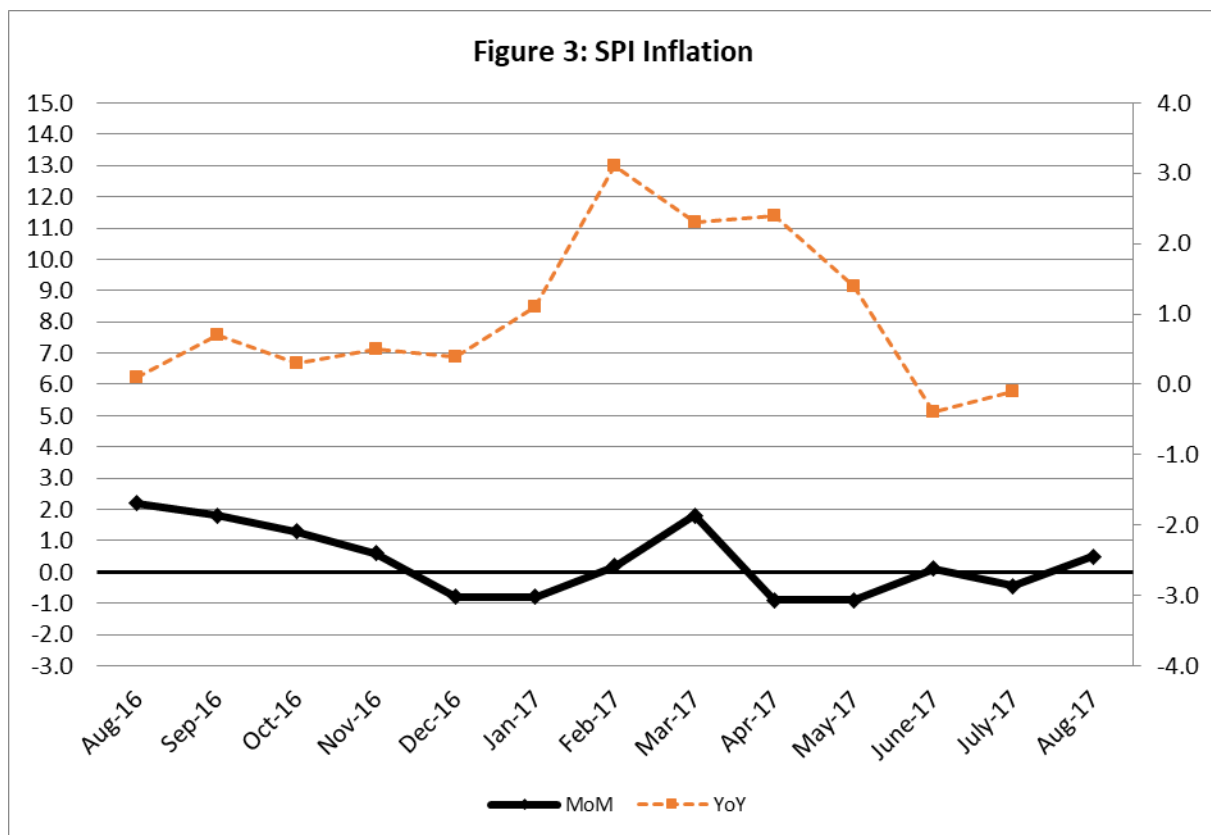
**Decreased:** Motor Vehicle Accessories (1.09%).

### III. Sensitive Price Indicator

Quintile-wise percentage changes YoY and MoM are given below in Table 3. The series from August 2016 to August 2017 is also graphed below in Figure 3.

Table 3: Sensitive Price Indicator (Base 2007-08)					
Quintiles	Indices			% Change August 2017 over	
	August 2017	July 2017	August 2016	July 2017	August 2016
1	209.88	208.76	210.07	0.54	-0.09
2	217.74	216.83	219.49	0.42	-0.80
3	219.08	218.32	218.24	0.35	0.38
4	223.33	223.29	222.64	0.02	0.31
5	220.36	220.70	219.11	-0.15	0.57
Combined	219.82	219.28	218.66	0.25	0.53

Table 3.1 : Weekly Percentage Change of SPI During August-17					
Quintiles	% Change with Previous week				
	3 <sup>rd</sup> Aug-2017	10 <sup>th</sup> Aug -2017	17 <sup>th</sup> Aug -2017	24 <sup>th</sup> Aug-2017	31 <sup>st</sup> Aug-2017
Quantile 1	0.01	0.74	-0.18	0.16	1.00
Combined	0.02	0.51	-0.23	0.05	0.86



## IV. Wholesale Price Index

The Wholesale Price Index for August, 2017 increased by 0.33% over July, 2017. It increased by 1.02% over the corresponding month of the last year. YoY and MoM movements, from August, 2016 to August, 2017 are also graphed below in Figure 4.

**Table 4 : Wholesale Price Index by Group of Commodities (Base 2007-08)**

No.	Group	Group Weight (%)	Indices			% Change August, 2017 over		Impact (in %age points) August, 2017 over	
			August 2017	July 2017	August 2016	July 2017	August 2016	July 2017	August 2016
	<b>General</b>	<b>100.00</b>	<b>217.96</b>	<b>217.24</b>	<b>215.75</b>	<b>0.33</b>	<b>1.02</b>	<b>0.42</b>	<b>1.02</b>
1.	Agriculture, Forestry & Fishery Products	25.77	250.96	251.86	251.53	-0.36	-0.23	0.00	-0.07
2.	Ores & Minerals, Electricity, Gas & Water	12.04	242.53	241.76	241.26	0.32	0.53	0.04	0.07
3.	Food Products, Beverages & Tobacco, Textiles, Apparel & Leather Products	31.11	226.39	224.20	225.84	0.98	0.24	0.31	0.08
	i. Food Products, Bev. & Tobacco	20.07	236.86	233.42	236.76	1.47	0.04	0.32	0.01
	ii. Textiles and Apparel	10.33	207.89	207.97	206.44	-0.04	0.70	0.00	0.07
	iii. Leather Products	0.71	199.75	199.75	199.41	0.00	0.17	0.00	0.00
4.	Other Transportable Goods except Metal Products, Machinery & Equipment	22.37	170.93	170.61	163.50	0.19	4.54	0.03	0.77
5.	Metal Products, Machinery & Equipment	8.72	177.02	176.14	172.82	0.50	2.43	0.04	0.17

Main contributors to month-on-month and year-on-year percentage changes are given below and detail is given in Annexure B.

1. **Month-on-month** Top few commodities which varied from previous month i.e. July, 2017 are given below:-

**Increased:** Stimulant & Spice Crops (11.06%), Sugar (8.79%), Spices (4.93%), Furnace Oil (4.49%), Eggs (4.13%), Vegetables (3.81%), Meat (3.27%), Salt & Pure Sodium Chloride (2.34%), Insecticides (1.98%) and Hard Board (1.89%).

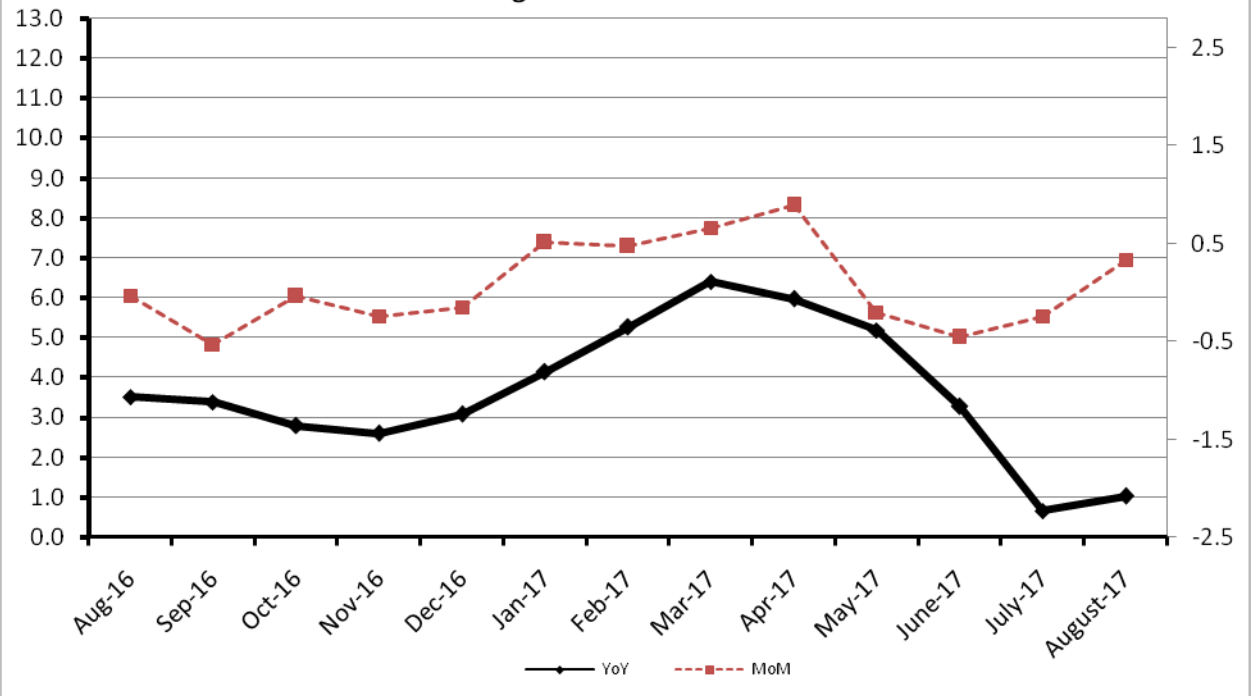
**Decreased:** Fresh Fruits (9.78%), Potatoes (6.36%), Poultry (5.44%), Other Cereal Flour (4.21%), Motor Spirit (2.52%), Bajra (2.15%), Diesel (1.79%), Hides & Fur Skins (1.75%), Dried Fruit & Nuts (1.65%), Jowar & Dried Fruits (1.59%) each, Wheat (1.30%) and Pulses (1.09%).

2. **Year-on-year** Top few commodities which varied from previous year i.e. August, 2016 are given below:-

**Increased:** Furnace Oil (33.93%), Stimulant & Spice Crops (28.65%), Poultry (22.73%), Glass Sheets (20.58%), Hard Board (13.68%), Unmanufactured Tobacco (13.55%), Woven Fabrics (13.08%), Steel Bar & Sheets (12.82%), Rice (12.66%) and Coffee & Tea (12.25%).

**Decreased:** Hides & Fur Skins (32.89%), Tobacco Products (26.82%), Bajra (26.80%), Other Cereal Flour (26.72%), Jowar (21.98%), Sugar (17.32%), Pulses (15.09%), Vegetables (13.52%) and Cultivators (13.24%).

Figure 4: WPI Inflation





**Annexure A:CPI by Commodity Groups and Commodities (2007-08=100)**

Item and Specification	Weight	Index Numbers			% Change in July 2017 over			
		Aug 2017	Jul 2017	Aug 2016	Jul 2017	Aug 2016		
				<b><u>209.46</u></b>				
<b><u>General</u></b>	<b><u>100.0000</u></b>	<b><u>216.61</u></b>	<b><u>216.19</u></b>		<b><u>+</u></b>	<b><u>0.19</u></b>	<b><u>±</u></b>	<b><u>3.41</u></b>
<b><u>Food and non-alcoholic Beverages</u></b>	<b><u>34.8343</u></b>	<b><u>230.99</u></b>	<b><u>229.99</u></b>	<b><u>225.91</u></b>	<b><u>±</u></b>	<b><u>0.43</u></b>	<b><u>±</u></b>	<b><u>2.25</u></b>
1 Wheat	0.3477	190.80	191.16	193.50	-	0.19	-	1.40
2 Wheat Flour	4.1648	203.10	204.66	209.16	-	0.76	-	2.90
3 Wheat Product	0.0959	212.62	213.98	215.54	-	0.64	-	1.35
4 Besan	0.1500	279.13	283.83	327.65	-	1.66	-	14.81
5 Rice	1.5821	182.03	179.16	159.75	+	1.60	+	13.95
6 Cereals	0.1563	255.72	255.20	250.03	+	0.20	+	2.28
7 Bakery & Confectionary	1.1550	218.89	218.39	215.45	+	0.23	+	1.60
8 Nimco	0.4574	255.83	255.18	248.87	+	0.25	+	2.80
9 Meat	2.4303	284.04	278.70	263.86	+	1.92	+	7.65
10 Chicken	1.3596	179.73	190.36	157.45	-	5.58	+	14.15
11 Fish	0.2970	216.37	214.09	218.81	+	1.06	-	1.12
12 Milk Fresh	6.6800	276.02	275.62	266.37	+	0.15	+	3.62
13 Milk Products	0.6338	265.43	264.40	256.76	+	0.39	+	3.38
14 Milk Powder	0.1129	234.41	234.53	236.75	-	0.05	-	0.99
15 Eggs	0.4555	197.47	193.19	192.60	+	2.22	+	2.53
16 Mustard Oil	0.0952	160.10	159.87	154.01	+	0.14	+	3.95
17 Cooking Oil	1.7538	138.09	138.25	133.69	-	0.12	+	3.29
18 Vegetable Ghee	2.0714	143.05	142.80	136.99	+	0.18	+	4.42
19 Dry Fruits	0.2543	263.32	264.33	262.69	-	0.38	+	0.24
20 Fresh Fruits	1.8649	267.92	284.14	235.74	-	5.71	+	13.65
21 Pulse Masoor	0.2712	174.98	178.60	214.39	-	2.03	-	18.38
22 Pulse Moong	0.2336	239.10	243.58	292.35	-	1.84	-	18.21
23 Pulse Mash (Washed)	0.2098	272.32	279.76	373.69	-	2.66	-	27.13
24 Pulse Gram	0.2361	276.43	281.95	344.99	-	1.96	-	19.87
25 Gram Whole	0.1616	287.53	287.96	303.31	-	0.15	-	5.20
26 Beans	0.0269	244.13	242.51	235.74	+	0.67	+	3.56
27 Potatoes	0.4699	266.30	261.30	242.67	+	1.91	+	9.74
28 Onion	0.5340	243.40	181.81	168.93	+	33.88	+	44.08
29 Tomatoes	0.4419	162.16	128.96	202.32	+	25.74	-	19.85
30 Fresh Vegetables	1.6802	264.85	262.61	282.55	+	0.85	-	6.26
31 Sugar	1.0445	214.35	200.46	253.85	+	6.93	-	15.56
32 Gur	0.0220	259.38	260.49	288.05	-	0.43	-	9.95
33 Honey	0.0446	332.15	331.37	312.60	+	0.24	+	6.25
34 SweetMeat	0.2483	252.57	251.88	243.97	+	0.27	+	3.53
35 Beverages	1.1990	226.10	226.09	221.76	+	0.00	+	1.96
36 Jam, Tomato Ketchup & Pickles	0.2454	219.51	218.93	215.53	+	0.26	+	1.85
37 Condiments	0.2656	270.57	269.74	262.89	+	0.31	+	2.92
38 Spices	0.5441	238.53	236.34	242.16	+	0.93	-	1.50
39 Tea	0.8377	289.16	291.89	255.57	-	0.94	+	13.14
<b><u>Alcoholic Beverages, Tobacco</u></b>	<b><u>1.4135</u></b>	<b><u>306.25</u></b>	<b><u>306.67</u></b>	<b><u>365.41</u></b>	<b><u>-</u></b>	<b><u>0.14</u></b>	<b><u>-</u></b>	<b><u>16.19</u></b>
40 Cigarettes	1.3906	307.18	307.56	367.46	-	0.12	-	16.40
41 Betel Leaves & Nuts	0.0229	250.15	252.67	241.23	-	1.00	+	3.70
<b><u>Clothing and footwear</u></b>	<b><u>7.5708</u></b>	<b><u>239.19</u></b>	<b><u>238.66</u></b>	<b><u>230.14</u></b>	<b><u>±</u></b>	<b><u>0.22</u></b>	<b><u>±</u></b>	<b><u>3.93</u></b>
42 Cotton Cloth	1.7286	232.48	232.33	225.23	+	0.06	+	3.22
43 Woolen Cloth	0.8759	257.77	256.60	244.64	+	0.46	+	5.37
44 Readymade Garments	0.9739	247.56	247.08	238.15	+	0.19	+	3.95
45 Woolen Readymade Garments	0.3964	258.31	258.31	253.10	+	0.00	+	2.06
46 Hosiery	0.5094	249.96	248.56	243.83	+	0.56	+	2.51
47 Dopatta	0.4412	246.66	246.51	241.64	+	0.06	+	2.08
48 Cleaning and Laundry	0.2110	271.61	270.83	253.54	+	0.29	+	7.13
49 Tailoring	0.8840	324.27	322.81	298.65	+	0.45	+	8.58
50 Footwear	1.5504	167.45	167.43	166.50	+	0.01	+	0.57

Item and Specification	Weight	Index Numbers			% Change in July 2017 over			
		Aug 2017	Jul 2017	Aug 2016	Jul 2017	Aug 2016		
			<b>198.88</b>	<b>188.91</b>	+	<b>0.03</b>	+	<b>5.30</b>
<b><u>Housing, water, Elec., Gas and other fuels</u></b>	<b>29.4149</b>	<b>198.93</b>						
51 House Rent	21.8149	191.49	191.49	178.64	+	0.00	+	7.19
52 Construction Input Items	0.5623	254.56	254.05	248.07	+	0.20	+	2.62
53 Construction Wage Rates	0.3331	245.58	242.75	230.47	+	1.17	+	6.56
54 Water Supply	0.4971	171.58	171.58	163.32	+	0.00	+	5.06
55 Electricity	4.3985	238.10	238.10	238.10	+	0.00	+	0.00
56 Gas	1.5756	158.08	158.08	158.08	+	0.00	+	0.00
57 Kerosene Oil	0.0057	197.81	198.67	194.46	-	0.43	+	1.72
58 Firewood Whole	0.2277	291.56	290.72	284.20	+	0.29	+	2.59
<b><u>Furnishing and household equipment maintenance</u></b>	<b>4.2082</b>	<b>228.05</b>	<b>227.74</b>	<b>222.31</b>	+	<b>0.14</b>	+	<b>2.58</b>
59 Furniture	0.3315	220.16	219.56	212.13	+	0.27	+	3.79
60 Household Textiles	0.6489	230.07	229.70	221.72	+	0.16	+	3.77
61 Household Equipment	0.5936	183.18	182.79	178.57	+	0.21	+	2.58
62 Utensils	0.3212	233.80	232.63	223.28	+	0.50	+	4.71
63 Plastic Products	0.2547	211.37	211.07	207.81	+	0.14	+	1.71
64 Washing Soaps & Detergents	0.7893	232.80	232.61	228.30	+	0.08	+	1.97
65 Sewing Needle & Dr Cell	0.1496	207.74	207.74	208.41	+	0.00	-	0.32
66 Household Servant	1.0432	254.90	254.90	249.98	+	0.00	+	1.97
67 Marriage Hall Charges	0.0762	249.20	248.67	243.04	+	0.21	+	2.53
<b><u>Health</u></b>	<b>2.1868</b>	<b>213.05</b>	<b>212.91</b>	<b>189.42</b>	+	<b>0.07</b>	+	<b>12.47</b>
68 Drugs & Medicines	1.2667	185.27	185.10	156.31	+	0.09	+	18.53
69 Medical Equipments	0.0080	251.81	251.81	236.25	+	0.00	+	6.59
70 Doctor (MBBS) Clinic Fee	0.5904	280.95	280.95	260.45	+	0.00	+	7.87
71 Medical Tests	0.3217	196.81	196.54	188.31	+	0.14	+	4.51
<b><u>Transport</u></b>	<b>7.2023</b>	<b>174.61</b>	<b>175.18</b>	<b>170.10</b>	-	<b>0.33</b>	+	<b>2.65</b>
72 Motor Vehicles	0.6630	176.59	176.06	170.42	+	0.30	+	3.62
73 Motor Vehicle Accessories	0.2439	211.91	211.42	214.24	+	0.23	-	1.09
74 Motor Fuel	3.0269	144.27	145.84	135.58	-	1.08	+	6.41
75 Mechanical Service	0.4552	232.07	231.88	227.40	+	0.08	+	2.05
76 Motor Vehicle Tax	0.1099	210.18	210.18	210.18	+	0.00	+	0.00
77 Transport Services	2.7034	193.59	193.59	193.40	+	0.00	+	0.10
<b><u>Communication</u></b>	<b>3.2198</b>	<b>133.03</b>	<b>132.88</b>	<b>130.90</b>	+	<b>0.11</b>	+	<b>1.63</b>
78 Postal Services	0.0662	250.44	250.44	240.63	+	0.00	+	4.08
79 Communication & Apparatus	3.1536	130.56	130.41	128.59	+	0.12	+	1.53
<b><u>Recreation and culture</u></b>	<b>2.0227</b>	<b>196.33</b>	<b>196.09</b>	<b>195.77</b>	+	<b>0.12</b>	+	<b>0.29</b>
80 Recreation & Culture	0.8634	129.38	129.20	128.83	+	0.14	+	0.43
81 Text Books	0.5706	287.98	287.98	292.41	+	0.00	-	1.51
82 Newspapers	0.1934	182.90	181.78	175.49	+	0.62	+	4.22
83 Stationery	0.3953	216.82	216.54	212.39	+	0.13	+	2.09
<b><u>Education</u></b>	<b>3.9431</b>	<b>249.61</b>	<b>249.54</b>	<b>225.17</b>	+	<b>0.03</b>	+	<b>10.85</b>
84 Education	3.9431	249.61	249.54	225.17	+	0.03	+	10.85
<b><u>Restaurants and hotels</u></b>	<b>1.2286</b>	<b>278.44</b>	<b>278.44</b>	<b>265.77</b>	+	<b>0.00</b>	+	<b>4.77</b>
85 Readymade Food	1.2286	278.44	278.44	265.77	+	0.00	+	4.77
<b><u>Misc. goods and services</u></b>	<b>2.7550</b>	<b>248.46</b>	<b>247.19</b>	<b>237.38</b>	+	<b>0.51</b>	+	<b>4.67</b>
86 Personal Care	1.4935	229.77	228.11	216.52	+	0.73	+	6.12
87 Cosmetics	0.3853	205.72	205.40	200.50	+	0.16	+	2.60
88 Blades	0.0322	197.80	197.80	195.93	+	0.00	+	0.95
89 Personal Equipments	0.8440	302.99	301.92	292.71	+	0.35	+	3.51

## Annexure B: Wholesale Price Indices by Major Groups &amp; Commodities

(2007-08=100)

Item and Specification	Weight	Index Numbers			% Change in Aug 2017 over			
		Aug 17	Jul 17	Aug 16	Jul 2017	Aug 2016		
<b>General</b>	<b>100.0000</b>	<b>217.96</b>	<b>217.24</b>	<b>215.75</b>	<b>+</b>	<b>0.33</b>	<b>+</b>	<b>1.02</b>
<b>Agriculture Forestry &amp; Fisher</b>	<b>25.7674</b>	<b>250.96</b>	<b>251.86</b>	<b>251.53</b>	<b>-</b>	<b>0.36</b>	<b>-</b>	<b>0.23</b>
001 Wheat	0.6297	194.17	196.73	204.89	-	1.30	-	5.23
002 Maize	0.6764	189.41	187.91	204.55	+	0.80	-	7.40
003 Rice	2.4413	168.81	167.90	149.84	+	0.54	+	12.66
004 Sorghum / Jowar	0.0214	209.74	213.13	268.83	-	1.59	-	21.98
005 Millet / Bajra	0.0374	157.16	160.62	214.70	-	2.15	-	26.80
006 Vegetables	1.2441	296.47	285.60	342.81	+	3.81	-	13.52
007 Fresh Fruits	1.5144	284.12	314.93	257.27	-	9.78	+	10.44
008 Dry Fruits	0.2478	233.30	237.06	236.23	-	1.59	-	1.24
009 Cotton Seeds	1.1511	278.51	280.36	260.45	-	0.66	+	6.93
010 Other Oil Seeds	0.0722	182.82	182.82	171.21	+	0.00	+	6.78
011 Edible Roots / Potatoes	0.2540	256.16	273.56	251.32	-	6.36	+	1.93
012 Stimulant & Spice Crops	0.1634	269.90	243.03	209.80	+	11.06	+	28.65
013 Pulses	0.4901	263.31	266.22	310.10	-	1.09	-	15.09
014 Sugar Crops	1.0725	268.94	268.94	286.34	+	0.00	-	6.08
015 Fibre Crops	5.3169	204.58	204.44	213.75	+	0.07	-	4.29
016 Unmanufactured Tobacco	0.0742	290.62	290.76	255.93	-	0.05	+	13.55
017 Poultry	0.5633	190.18	201.12	154.96	-	5.44	+	22.73
018 Raw Milk from Bovine Animals	7.0279	269.94	268.56	262.97	+	0.51	+	2.65
019 Eggs	0.5034	199.48	191.56	205.04	+	4.13	-	2.71
020 Raw Animal Materials / Wool	0.0351	172.91	173.80	173.89	-	0.51	-	0.56
021 Hides & Fur Skins, Raw	0.4834	100.98	102.78	150.46	-	1.75	-	32.89
022 Fuel Wood in Logs	0.0179	279.63	279.63	264.77	+	0.00	+	5.61
023 Fish Live Fresh or Chilled	1.7295	463.98	463.98	469.80	+	0.00	-	1.24
<b>Ores/Minerals, Elec., Gas &amp; W</b>	<b>12.0389</b>	<b>242.53</b>	<b>241.76</b>	<b>241.26</b>	<b>+</b>	<b>0.32</b>	<b>+</b>	<b>0.53</b>
024 Coal not Agglomerated	0.7508	155.29	155.29	152.94	+	0.00	+	1.54
025 Natural Gas Liquefied	5.7385	210.37	208.82	207.95	+	0.74	+	1.16
026 Salt & Pure Sodium Chloride	0.0584	248.46	242.77	254.33	+	2.34	-	2.31
027 Electrical Energy	5.4912	288.00	288.00	288.00	+	0.00	+	0.00
<b>Food, Beverages, Tobacco, Textil</b>	<b>31.1122</b>	<b>226.39</b>	<b>224.20</b>	<b>225.84</b>	<b>+</b>	<b>0.98</b>	<b>+</b>	<b>0.24</b>
<b>Food Products, Beverages &amp;</b>	<b>20.0718</b>	<b>236.86</b>	<b>233.42</b>	<b>236.76</b>	<b>+</b>	<b>1.47</b>	<b>+</b>	<b>0.04</b>
028 Meat of Animals	3.4559	303.71	294.10	277.40	+	3.27	+	9.48
029 Vegetables & Fruit Juice	0.0058	223.38	223.38	208.88	+	0.00	+	6.94
030 Dried Fruits & Nuts	0.1733	263.87	268.30	238.61	-	1.65	+	10.59
031 Fruit Juices	0.3880	182.38	181.83	182.13	+	0.30	+	0.14
032 Vegetable Oils Refined	1.9242	155.87	155.56	151.32	+	0.20	+	3.01
033 Vegetable Ghee	1.5632	126.04	126.24	121.34	-	0.16	+	3.87
034 Oil Cakes	0.9611	228.42	229.39	235.25	-	0.42	-	2.90
035 Processed Liquid Milk	4.4437	282.01	279.71	252.73	+	0.82	+	11.59
036 Milk & Cream in Solid Form	0.0316	222.44	221.77	221.01	+	0.30	+	0.65
037 Ice Cream	0.0047	266.02	266.02	238.04	+	0.00	+	11.75
038 Dairy Products N.E.C	0.0117	268.85	269.53	248.53	-	0.25	+	8.18
039 Wheat Flour	2.3034	186.18	188.03	193.41	-	0.98	-	3.74
040 Other Cereal Flour	0.0604	226.59	236.55	309.22	-	4.21	-	26.72
041 Sugar Refined	1.7975	221.26	203.39	267.60	+	8.79	-	17.32
042 Chocolate	0.0139	100.00	100.00	99.45	+	0.00	+	0.55
043 Sugar Confectionary	0.0738	128.44	128.44	118.83	+	0.00	+	8.09
044 Coffee & Tea	0.7303	258.68	261.18	230.46	-	0.96	+	12.25
045 Spices	0.1449	199.08	189.72	190.20	+	4.93	+	4.67
046 Other Food Products	0.0336	294.50	294.01	293.85	+	0.17	+	0.22
047 Mineral Water	0.0207	199.51	199.51	196.22	+	0.00	+	1.68
048 Beverages	0.6303	172.85	172.92	172.44	-	0.04	+	0.24
049 Tobacco Products	1.2998	318.37	318.37	435.03	+	0.00	-	26.82
<b>Textiles &amp; Apparels</b>	<b>10.3289</b>	<b>207.89</b>	<b>207.97</b>	<b>206.44</b>	<b>-</b>	<b>0.04</b>	<b>+</b>	<b>0.70</b>
050 Cotton Yarn	5.2491	202.49	202.68	204.03	-	0.09	-	0.75
051 Nylon Yarn	0.1719	143.99	143.99	147.08	+	0.00	-	2.10
052 Blended Yarn	0.1689	183.38	182.65	177.65	+	0.40	+	3.23
053 Woven Fabrics	0.0128	316.28	316.28	279.69	+	0.00	+	13.08
054 Cotton Fabrics	0.6343	211.33	211.33	209.09	+	0.00	+	1.07
055 Other Fabrics	1.1016	227.16	227.16	224.29	+	0.00	+	1.28
056 Silk & Reyon Fabrics	0.7350	188.89	188.89	190.96	+	0.00	-	1.08
057 Towels	0.1235	276.14	276.14	267.20	+	0.00	+	3.35

## Annexure B: Wholesale Price Indices by Major Groups &amp; Commodities

(2007-08=100)

Item and Specification	Weight	Index Numbers			% Change in Aug 2017 over	
		Aug 17	Jul 17	Aug 16	Jul 2017	Aug 2016
058 Blankets	0.0029	247.52	247.52	243.93	+ 0.00	+ 1.47
059 Bed Sheets	0.0913	256.87	256.87	256.29	+ 0.00	+ 0.23
060 Quilts	0.0019	208.42	208.42	198.00	+ 0.00	+ 5.26
061 Woolen Carpets	0.0383	196.43	196.43	181.55	+ 0.00	+ 8.20
062 Synthetic Carpets	0.0566	130.95	130.95	129.25	+ 0.00	+ 1.32
063 Hosiery Products	0.8832	243.31	243.31	224.73	+ 0.00	+ 8.27
064 Readymade Garments	1.0576	201.37	201.37	200.66	+ 0.00	+ 0.35
<b>Leather Products</b>	<b>0.7115</b>	<b>199.75</b>	<b>199.75</b>	<b>199.41</b>	+ <b>0.00</b>	+ <b>0.17</b>
065 Leather Without Hair	0.2973	221.97	221.97	221.97	+ 0.00	+ 0.00
066 Other Leather N.E.C	0.2567	207.31	207.31	207.31	+ 0.00	+ 0.00
067 Footwears	0.1575	145.51	145.51	143.97	+ 0.00	+ 1.07
<b>Other Transportable Goods</b>	<b>22.3659</b>	<b>170.93</b>	<b>170.61</b>	<b>163.50</b>	+ <b>0.19</b>	+ <b>4.54</b>
068 Timber	0.0165	231.53	231.53	220.36	+ 0.00	+ 5.07
069 Printing Paper	0.4279	166.40	166.11	164.90	+ 0.17	+ 0.91
070 Hard Board	0.1579	225.00	220.83	197.92	+ 1.89	+ 13.68
071 Coke	0.2797	163.45	163.45	163.45	+ 0.00	+ 0.00
072 Motor Spirit	1.5336	117.38	120.42	108.54	- 2.52	+ 8.14
073 Diesel Oil	5.2664	150.68	153.43	144.34	- 1.79	+ 4.39
074 Kerosine Oil	0.2151	117.12	117.12	115.11	+ 0.00	+ 1.75
075 Furnace Oil	3.2664	101.72	97.35	75.95	+ 4.49	+ 33.93
076 Mobil Oil	0.7114	201.29	201.29	196.00	+ 0.00	+ 2.70
077 Chemicals	1.7720	180.49	177.88	177.26	+ 1.47	+ 1.82
078 Dyeing Material	0.1539	146.55	146.55	146.55	+ 0.00	+ 0.00
079 Fertilizers	2.8657	215.94	215.02	226.26	+ 0.43	- 4.56
080 Pesticides	0.2763	306.06	306.06	308.79	+ 0.00	- 0.88
081 Insecticides	0.1276	142.41	139.64	137.12	+ 1.98	+ 3.86
082 Paints & Varnishes	0.1916	294.56	294.51	295.36	+ 0.02	- 0.27
083 Medicines	1.1428	174.94	174.14	162.78	+ 0.46	+ 7.47
084 Soaps & Detergents	0.8168	191.20	191.20	185.30	+ 0.00	+ 3.18
085 Auto Tyres	0.2703	177.07	177.07	181.25	+ 0.00	- 2.31
086 Plastic Products	0.4550	225.88	225.88	228.35	+ 0.00	- 1.08
087 Glass sheets	0.2089	298.97	298.97	247.94	+ 0.00	+ 20.58
088 Other Glass Articles	0.1635	317.24	317.24	299.07	+ 0.00	+ 6.08
089 Ceramics & Sanitary Fixture	0.0244	232.65	232.65	233.48	+ 0.00	- 0.36
090 Bricks, Blocks & Tiles	0.1566	221.50	221.24	218.86	+ 0.12	+ 1.21
091 Cement	1.8145	221.52	220.11	211.14	+ 0.64	+ 4.92
092 Bed Foam	0.0006	170.33	170.33	158.83	+ 0.00	+ 7.24
093 Matches	0.0505	171.36	171.36	162.62	+ 0.00	+ 5.37
<b>Metal Product, Machinery &amp; Eq</b>	<b>8.7156</b>	<b>177.02</b>	<b>176.14</b>	<b>172.82</b>	+ <b>0.50</b>	+ <b>2.43</b>
094 Pig Iron	0.0593	128.97	128.97	128.97	+ 0.00	+ 0.00
095 Steel Bar & Sheets	1.4022	138.48	137.44	122.74	+ 0.76	+ 12.82
096 Pipe Fittings	0.0780	215.66	215.66	193.63	+ 0.00	+ 11.38
097 Steel Products	0.3879	177.56	177.56	176.99	+ 0.00	+ 0.32
098 Engines & Motors	0.0046	116.98	116.98	109.24	+ 0.00	+ 7.09
099 Vacuum Pumps	0.0155	123.69	123.69	114.95	+ 0.00	+ 7.60
100 Air Conditioners	0.0049	200.10	200.10	201.18	+ 0.00	- 0.54
101 Cultivators	0.0551	190.66	190.66	219.76	+ 0.00	- 13.24
102 Chuff Cutter	0.1293	153.46	153.46	149.20	+ 0.00	+ 2.86
103 Tractors	0.0028	201.75	201.75	203.68	+ 0.00	- 0.95
104 Lathe Machines	0.0525	241.06	241.06	214.81	+ 0.00	+ 12.22
105 Concrete Mixture	0.0107	138.83	138.83	138.83	+ 0.00	+ 0.00
106 Fridge,WashM,SewM,Fans,Iron	1.1645	214.97	214.93	204.03	+ 0.02	+ 5.36
107 Electric Wires	0.0912	205.92	205.92	195.19	+ 0.00	+ 5.50
108 Lighting Equipments	1.4431	170.73	170.73	172.03	+ 0.00	- 0.76
109 Radio & Television	0.1843	140.42	140.42	140.42	+ 0.00	+ 0.00
110 Motor Vehicles	0.0244	195.36	195.36	185.25	+ 0.00	+ 5.46
111 Motorcycles	0.2570	125.89	125.89	125.89	+ 0.00	+ 0.00
112 Bicycles	3.3483	187.65	185.81	187.65	+ 0.99	+ 0.00