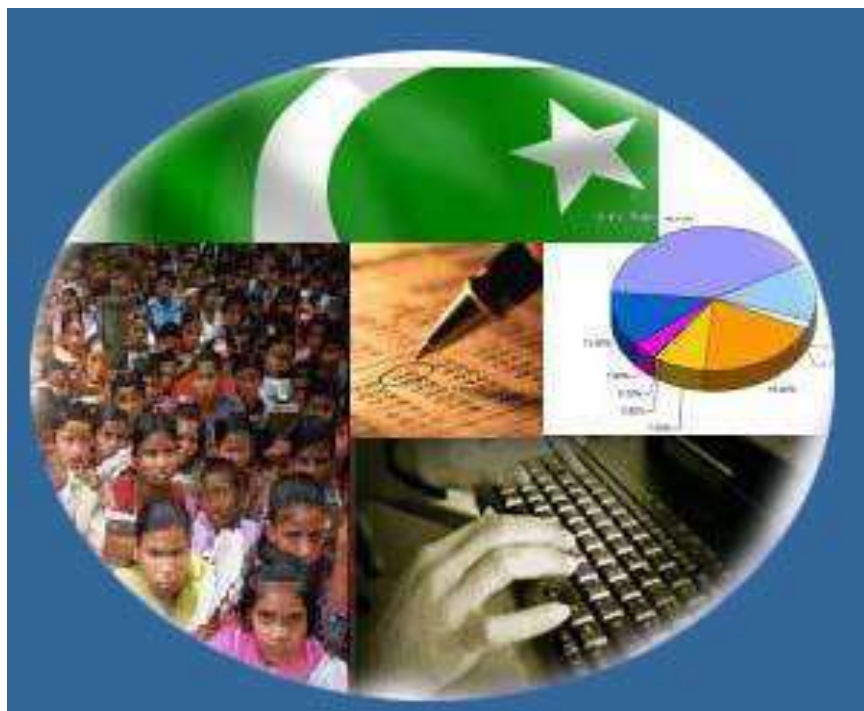




Monthly Review on Price Indices



November, 2016
(Base 2007-08)

Government of Pakistan
Statistics Division
Pakistan Bureau of Statistics
Islamabad

Inflation in Brief

1. CPI inflation General increased by 3.8% on year-on-year basis in November 2016 as compared to an increase of 4.2% in the previous month and 2.7% in November 2015. On month-on-month basis, it increased by 0.2% in November 2016 as compared to an increase of 0.8% in the previous month and a increase of 0.6% in November 2015.
2. Core inflation measured by non-food non-energy CPI (Core NFNE) increased by 5.3% on (YoY) basis in November 2016 as compared to increase of 5.2% in the previous month and 4.0% in November 2015. On (MoM) basis, it increased by 0.2% in November 2016 as compared to increase of 0.9% in previous month ,and an increase of 0.1% in corresponding month of last year i.e. November 2015.
3. Core inflation, measured by 20% weighted trimmed mean CPI (Core Trimmed) increased by 3.8% on (YoY) basis in November 2016 as compared to 3.8% in the previous month and by 2.9% in November 2015. On (MoM) basis, it increased by 0.2% in November 2016 as compared to an increase of 0.6% in the previous month and an increase of 0.2% in corresponding month of last year i.e. November 2015.
4. SPI inflation on YoY increased by 0.6% in November 2016 as compared to an increase of 1.3% a month earlier and an increase of 2.1% in November 2015. On MoM basis, it increased by 0.3% in November 2016 as compared to an increase of 0.7% a month earlier and an increase of 1.0% in November, 2015.
5. WPI inflation on YoY basis increased by 2.6% in November 2016 as compared to an increase of 2.8% a month earlier and a decrease of 1.7% in November 2015. WPI inflation on MoM basis decreased by 0.2% in November 2016 as compared to decrease of 0.0% a month earlier whereas no change is observed in corresponding month of last year i.e. November 2015.
6. Figures 1 and 2 show graphically the data of Table 1. Table 1.1 shows "Period Average" and "YoY" percent changes in indices of three years.

Table 1: Inflation (%) (Base 2007-08)

Period	CPI						Core Inflation				SPI**		WPI	
	General		Food		Non-food		NFNE*		Trimmed		YoY	MoM	YoY	MoM
	YoY	MoM	YoY	MoM	YoY	MoM	YoY	MoM	YoY	MoM				
Oct 15	1.6	0.5	0.5	0.4	2.4	0.5	3.4	0.0	2.8	0.0	-0.1	1.2	-2.7	0.5
Nov 15	2.7	0.6	2.2	1.2	3.2	0.2	4.0	0.1	2.9	0.2	2.1	1.0	-1.7	0.0
Dec 15	3.2	-0.6	2.7	-1.6	3.6	0.2	4.1	0.2	2.7	0.2	2.9	-0.7	-0.4	-0.6
Jan 16	3.3	0.2	2.5	-0.6	3.9	0.8	4.3	0.9	3.0	0.6	3.1	-0.7	0.1	-0.5
Feb 16	4.0	-0.3	3.7	-0.7	4.2	0.0	4.5	0.2	3.6	0.1	3.6	-0.5	0.6	-0.6
Mar 16	3.9	0.1	3.7	0.5	4.1	-0.1	4.7	0.2	3.8	0.2	3.5	-0.2	0.2	-0.4
April 16	4.2	1.5	4.7	2.4	3.8	1.0	4.4	1.1	3.8	0.6	2.9	-0.1	0.6	1.3
May 16	3.2	-0.2	2.1	-0.7	3.9	0.2	4.6	0.2	3.6	0.2	0.6	-1.0	0.0	0.6
June 16	3.2	0.6	2.3	1.4	3.8	0.1	4.6	0.1	3.7	0.2	0.7	1.1	0.2	1.4
July 16	4.1	1.3	4.7	2.5	3.7	0.5	4.5	0.6	3.6	0.5	1.7	1.3	3.0	2.3
Aug 16	3.6	-0.3	3.4	-0.9	3.7	0.2	4.6	0.2	3.5	0.1	2.2	0.2	3.5	0.0
Sep 16	3.9	0.2	4.0	0.1	3.8	0.2	4.8	0.3	3.7	0.1	1.8	0.1	3.4	-0.5
Oct 16	4.2	0.8	4.4	0.8	4.1	0.8	5.2	0.9	3.8	0.6	1.3	0.7	2.8	-0.0
Nov 16	3.8	0.2	3.3	0.2	4.2	0.2	5.3	0.2	3.8	0.2	0.6	0.3	2.6	-0.2

*NFNE is non-food non-energy, ** SPI for quintile 1. Digits 0.0* are due to rounding off.

Table 1.1 : Period Average and YoY % Changes of Indices (Base 2007-08)

Index	Averages July-November % Changes			November over November % Changes		
	2016-17	2015-16	2014-15	2016	2015	2014
CPI	3.92	1.86	6.45	3.81	2.73	3.96
SPI	1.51	-0.26	4.01	0.61	2.06	-0.27
WPI	3.05	-2.73	2.74	2.56	-1.67	0.02

Figure 1: CPI Inflation YoY, Special Indices

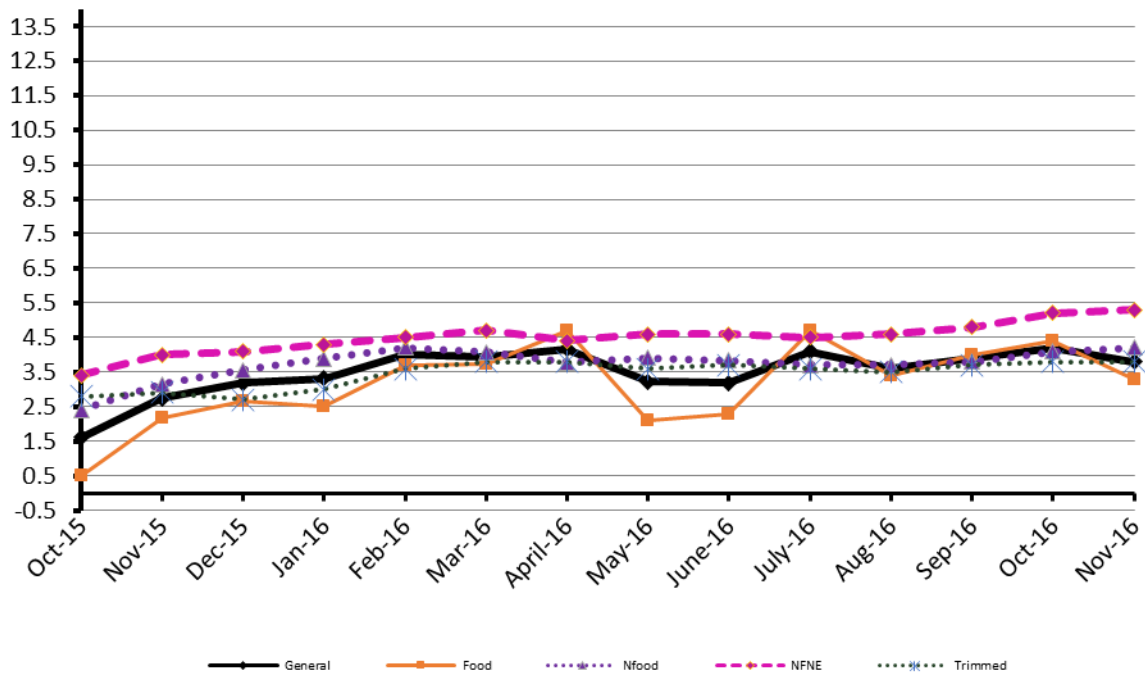
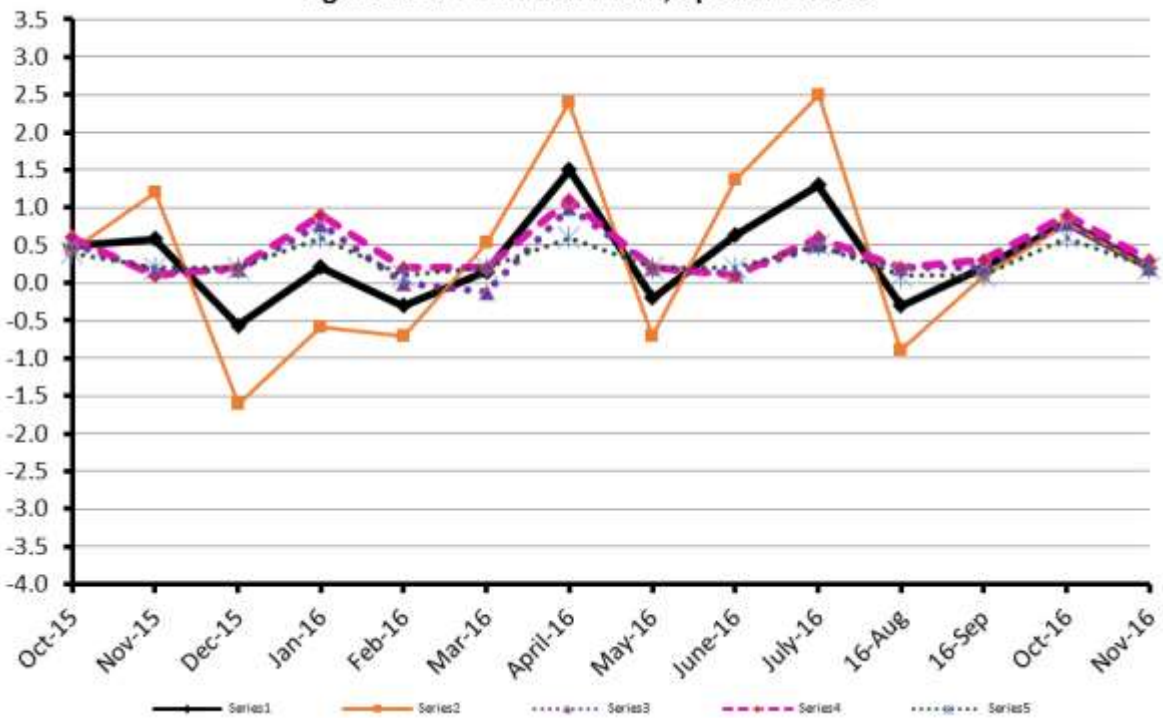


Figure 2: CPI Inflation MoM, Special Indices



II. Consumer Price Index (CPI)

The Consumer Price Index of November 2016, has increased by 0.21% over October 2016 and increased by 3.81% over corresponding month of the last year i.e. November 2015.

Table 2 : Consumer Price Index by Group of Commodities and Services (Base 2007-08)

No	Group	Group Weight (%)	Indices			% Change November 2016 Over		Impact (In % points) November 2016 Over	
			Nov 2016	Oct 2016	Nov 2015	Oct 2016	Nov 2015	Oct 2016	Nov 2015
	General	100.00	212.01	211.57	204.23	0.21	3.81	0.21	3.81
1.	Food & Non-alcoholic Bev.	34.83	228.74	228.30	223.17	0.19	2.50	0.07	0.95
	<i>Non-perishable Food Items</i>	29.84	226.08	224.52	218.60	0.69	3.42	0.22	1.09
	<i>Perishable Food Items</i>	4.99	244.63	250.94	250.51	-2.51	-2.35	-0.15	-0.14
2.	Alcoholic Bev. & Tobacco	1.41	365.33	364.39	312.26	0.26	17.00	0.01	0.37
3.	Clothing & Footwear	7.57	232.18	231.18	222.75	0.43	4.23	0.04	0.35
4.	Housing, Water, Electricity, Gas & Fuels	29.41	191.64	191.56	182.66	0.04	4.92	0.01	1.29
5.	Furnishing & Household Equipment Maintenance	4.21	223.21	222.66	215.78	0.25	3.44	0.01	0.15
6.	Health	2.19	195.28	193.78	180.59	0.77	8.13	0.02	0.16
7.	Transport	7.20	170.65	170.40	177.09	0.15	-3.64	0.01	-0.23
8.	Communication	3.22	131.52	131.26	130.39	0.20	0.87	0.00	0.02
9.	Recreation & Culture	2.02	196.40	196.21	193.66	0.10	1.41	0.00	0.03
10.	Education	3.94	233.40	232.15	209.25	0.54	11.54	0.04	0.48
11.	Restaurants & Hotels	1.23	267.68	266.35	254.36	0.50	5.24	0.01	0.08
12.	Miscellaneous	2.76	238.33	237.26	225.02	0.45	5.92	0.01	0.18

Main contributors to month-on-month and year-on-year percentage changes are given below and detail is given in Annexure A.

- Month-on-month** Top few commodities which varied from previous month are given below:-

Food Items Increased: Eggs (23.21%), Potatoes (21.14%), Pulse Gram (7.28%) Besan (5.85%), Sugar (3.85%), Gram Whole (2.62%), Mustard Oil (1.46%), and Dried fruit (1.44%).

Decreased: Tomatoes (14.63%), Fresh Fruits (7.95%), Onion (5.66%), Pulse Mash (3.98%), Chicken (3.77%), Gur (3.42%), and Pulse Moong (1.48%).

Non-food Items Increased: Woolen Readymade Garments (2.78%) and Woolen Cloth (1.22%).

Decreased: Household equipment (0.03%).

- Year-on-Year:** Top few commodities which varied from previous year i.e. November 2015 are given below:-

Food Items Increased: Gram Whole (44.06%), Pulse Gram (39.95%), Besan (33.36%), Potatoes (26.06%), Sugar (22.31%), Eggs (20.12%), Cigarettes (17.08%), Fresh Vegetables (15.78%), and Betel Leaves and Nuts (9.23%) and Pulse Mash (5.70%).

Decreased: Onion (55.45%), Tomatoes (38.88%), Pulse Moong (7.19%) and Tea (6.21%).

Non-food Items Increased: Education (11.54%), Water Supply (9.89%), Doctor (MBBS) Clinic Fee (8.93%), Medical Equipments (8.53%), Drugs & Medicines (8.53%), Personal Equipments (8.51%), House Rent (6.65%), and Tailoring (6.57%).

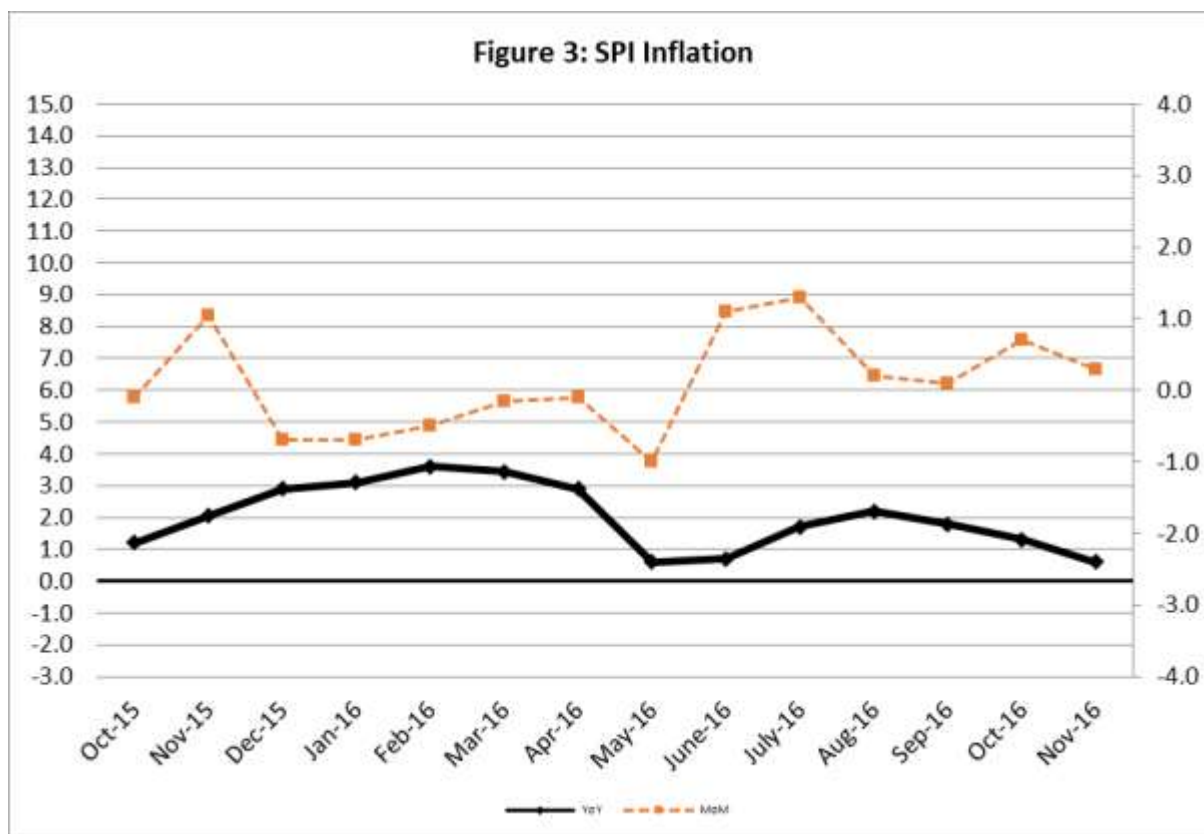
Decreased: Motor Fuel (9.09%), Kerosene Oil (7.16%) and Motor Vehicle Accessories (5.93%).

III. Sensitive Price Indicator

Quintile-wise percentage changes YoY and MoM are given below in Table 3. The series from October 2015 to November 2016 is also graphed below in Figure 3.

Table 3: Sensitive Price Indicator (Base 2007-08)					
Quintiles	Indices			% Change Nov 2016 over	
	Nov 2016	Oct 2016	Nov 2015	Oct 2016	Nov 2015
1	212.40	211.71	211.11	0.33	0.61
2	219.58	218.95	218.16	0.29	0.65
3	220.41	219.81	218.97	0.27	0.66
4	224.77	224.20	223.31	0.25	0.65
5	220.95	220.42	219.81	0.24	0.52
Combined	220.68	220.11	219.37	0.26	0.60

Table 3.1 : Weekly Percentage Change of SPI During November-16				
Quintiles	% Change with Previous week			
	3 rd Nov-2016	10 th Nov-2016	17 th Nov 2016	24 th Nov-2016
Quantile 1	0.26	-0.24	0.11	-0.15
Combined	0.19	-0.25	0.11	-0.06



IV. Wholesale Price Index

The Wholesale Price Index for November, 2016 decreased by 0.21% over October, 2016. It increased by 2.56% over the corresponding month of the last year. YoY and MoM movements, from October, 2015 to November, 2016 are also graphed below in Figure 4.

Table 4 : Wholesale Price Index by Group of Commodities (Base 2007-08)									
No.	Group	Group Weight (%)	Indices			% Change November, 2016 over		Impact (in %age points) November, 2016 over	
			Nov 2016	Oct 2016	Nov 2015	Oct 2016	Nov 2015	Oct 2016	Nov 2015
	General	100.00	214.07	214.53	208.72	-0.21	2.56	-0.21	2.56
1.	Agriculture, Forestry & Fishery Products	25.77	242.47	247.04	226.06	-1.85	7.26	-0.55	2.03
2.	Ores & Minerals, Electricity, Gas & Water	12.04	242.44	242.01	246.98	0.18	-1.84	0.02	-0.26
3.	Food Products, Beverages & Tobacco, Textiles, Apparel & Leather Products	31.11	225.93	224.34	212.98	0.71	6.08	0.23	1.93
	i. Food Products, Bev. & Tobacco	20.07	239.18	237.74	224.90	0.61	6.35	0.14	1.37
	ii. Textiles and Apparel	10.33	201.76	200.01	190.89	0.87	5.69	0.08	0.54
	iii. Leather Products	0.71	202.86	199.75	197.58	1.56	2.67	0.01	0.02
4.	Other Transportable Goods except Metal Products, Machinery & Equipment	22.37	165.19	165.08	176.87	0.07	-6.60	0.01	-1.25
5.	Metal Products, Machinery & Equipment	8.72	174.10	172.38	171.09	1.00	1.76	0.07	0.13

Main contributors to month-on-month and year-on-year percentage changes are given below and detail is given in Annexure B.

1. **Month-on-month** Top few commodities which varied from previous month i.e. October, 2016 are given below:-
Increased: Eggs (27.98%), Engines & Motors (17.45%), Vacuum Pumps (15.98%), Potatoes (12.47%), Furnace Oil (8.10%), Hosiery Products (6.93%), Other Cereal Flour (6.36%), Steel bar & Sheets (5.13%), Dried Fruit & Nuts (4.02%), Sugar (3.95%), and Leather without Hair (3.35%).

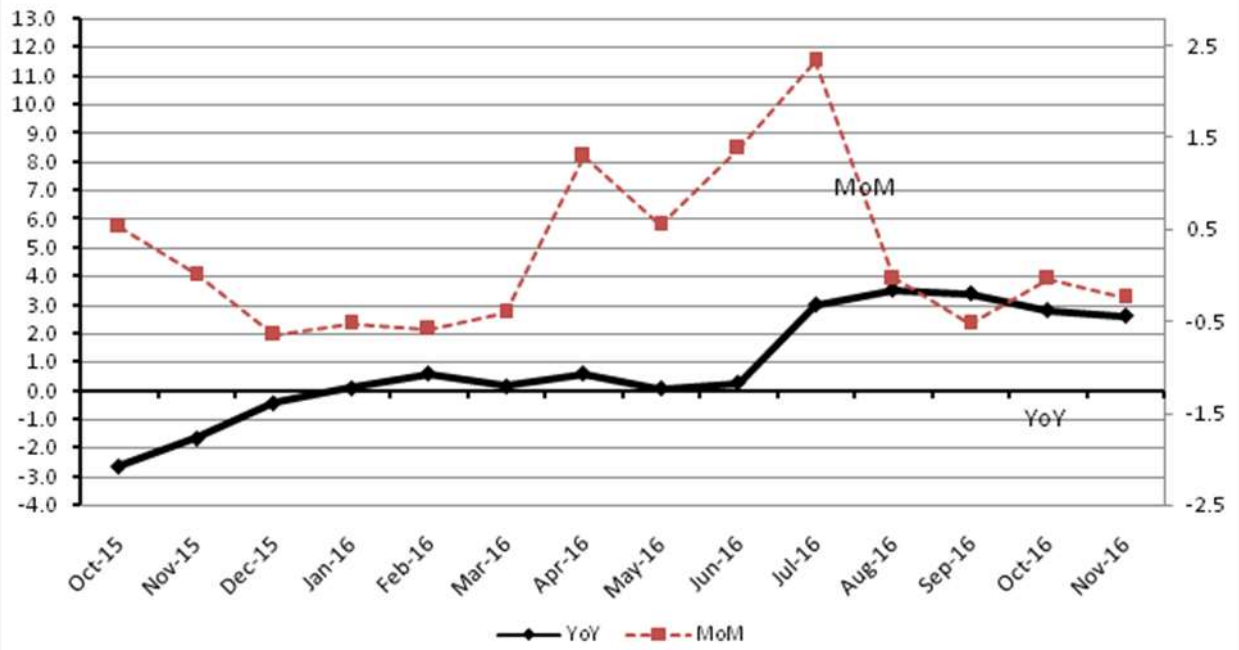
Decreased: Fresh Fruits (18.38%), Vegetables (15.33%), Sugar Crops (9.35%), Salt & Pure Sodium Chloride (8.79%), Stimulant & Spice Crops (7.97%), and Poultry (6.01%).

2. **Year-on-year** Top few commodities which varied from previous year i.e. November, 2015 are given below:-

Increased: Other Cereal Flour (45.85%), Woolen Carpets (37.50%), , Potatoes (37.41%), Fish (31.93%), Pulses (27.30%), Other Glass Articles (22.76%), Glass Sheets (22.44%), Eggs (22.42%), Tobacco Products (22.05%), Furnace Oil (21.92%), Sugar (21.27%), Engines & Motors (17.63%), Unmanufactured Tobacco (15.74%), Vacuum Pumps (15.54%), Lathe Machines (15.44%), Medicines (14.90%) and Fiber Crops (13.56%).

Decreased: Kerosene Oil (24.33%), Fertilizers (20.82%), Hides & Fur Skins (19.95%), Stimulant & Spice Crops (19.47%), Coal (19.19%), Diesel Oil (16.10%), Motor spirit (15.73%) and Cultivators (13.24%).

Figure 4: WPI Inflation



Annexure A: Consumer Price Index Numbers by Commodity Groups & Commodities (2007-08=100)

Item and Specification	Weight	Index Numbers			% Change in Nov 2016 over			
		Nov 16	Oct 16	Nov 15	Oct 2016	Nov 2015		
General	100.0000	212.01	211.57	204.22	+	0.21	+	3.81
Food and non-alcoholic Bevera	34.8343	228.74	228.30	223.17	+	0.19	+	2.50
01 Wheat	0.3477	203.78	202.60	202.99	+	0.58	+	0.39
02 Wheat Flour	4.1648	212.30	211.25	216.28	+	0.50	-	1.84
03 Wheat Product	0.0959	217.35	217.29	216.05	+	0.03	+	0.60
04 Besan	0.1500	346.57	327.42	259.87	+	5.85	+	33.36
05 Rice	1.5821	160.23	160.67	158.55	-	0.27	+	1.06
06 Cereals	0.1563	251.74	250.57	244.41	+	0.47	+	3.00
07 Bakery & Confectionary	1.1550	216.46	215.50	210.04	+	0.45	+	3.06
08 Nimco	0.4574	250.65	249.01	242.93	+	0.66	+	3.18
09 Meat	2.4303	266.48	264.87	255.84	+	0.61	+	4.16
10 Chicken	1.3596	174.63	181.47	174.41	-	3.77	+	0.13
11 Fish	0.2970	215.91	216.30	219.78	-	0.18	-	1.76
12 Milk Fresh	6.6800	267.15	266.40	257.02	+	0.28	+	3.94
13 Milk Products	0.6338	257.33	256.84	249.39	+	0.19	+	3.18
14 Milk Powder	0.1129	237.27	237.25	231.58	+	0.01	+	2.46
15 Eggs	0.4555	241.93	196.35	201.40	+	23.21	+	20.12
16 Mustard Oil	0.0952	155.96	153.72	155.03	+	1.46	+	0.60
17 Cooking Oil	1.7538	134.00	133.71	133.44	+	0.22	+	0.42
18 Vegetable Ghee	2.0714	138.42	138.08	135.99	+	0.25	+	1.79
19 Dry Fruits	0.2543	265.00	261.23	255.10	+	1.44	+	3.88
20 Fresh Fruits	1.8649	211.10	229.34	200.95	-	7.95	+	5.05
21 Pulse Masoor	0.2712	211.28	211.56	201.38	-	0.13	+	4.92
22 Pulse Moong	0.2336	278.74	282.92	300.34	-	1.48	-	7.19
23 Pulse Mash (Washed)	0.2098	335.28	349.16	317.19	-	3.98	+	5.70
24 Pulse Gram	0.2361	377.06	351.48	269.43	+	7.28	+	39.95
25 Gram Whole	0.1616	313.13	305.15	217.36	+	2.62	+	44.06
26 Beans	0.0269	231.13	232.30	233.73	-	0.50	-	1.11
27 Potatoes	0.4416	295.55	243.97	234.45	+	21.14	+	26.06
28 Onion	0.5057	166.58	176.57	373.92	-	5.66	-	<u>55.45</u>
29 Tomatoes	0.4136	168.62	197.51	275.88	-	14.63	-	38.88
30 Fresh Vegetables	1.7651	307.50	309.96	265.60	-	0.79	+	15.78
31 Sugar	1.0445	260.56	250.89	213.03	+	3.85	+	22.31
32 Gur	0.0220	281.47	291.45	278.99	-	3.42	+	0.89
33 Honey	0.0446	316.04	314.49	305.40	+	0.49	+	3.48
34 SweetMeat	0.2483	245.39	245.36	238.79	+	0.01	+	2.76
35 Beverages	1.1990	219.50	219.47	217.39	+	0.01	+	0.97
36 Jam, Tomato Ketchup & Pickles	0.2454	216.26	215.72	211.59	+	0.25	+	2.21
37 Condiments	0.2656	265.31	263.47	259.27	+	0.70	+	2.33
38 Spices	0.5441	239.32	239.79	237.23	-	0.20	+	0.88
39 Tea	0.8377	256.46	255.49	273.45	+	0.38	-	6.21
Alcoholic Beverages, Tobacco	1.4135	365.33	364.39	312.26	+	0.26	+	17.00
40 Cigarettes	1.3906	367.34	366.41	313.74	+	0.25	+	17.08
41 Betel Leaves & Nuts	0.0229	243.10	241.62	222.55	+	0.61	+	9.23
Clothing and footwear	7.5708	232.18	231.18	222.75	+	0.43	+	4.23
42 Cotton Cloth	1.7286	225.35	225.34	215.40	+	0.00	+	4.62
43 Woolen Cloth	0.8759	250.42	247.41	237.76	+	1.22	+	5.32
44 Readymade Garments	0.9739	238.62	237.88	227.22	+	0.31	+	5.02
45 Woolen Readymade Garments	0.3964	260.39	253.35	252.19	+	2.78	+	3.25
46 Hosiery	0.5094	244.86	243.74	236.08	+	0.46	+	3.72
47 Dopatta	0.4412	241.74	241.74	235.00	+	0.00	+	2.87
48 Cleaning and Laundry	0.2110	257.02	256.52	246.39	+	0.19	+	4.31
49 Tailoring	0.8840	304.47	303.96	285.69	+	0.17	+	6.57
50 Footwear	1.5504	166.74	166.58	165.14	+	0.10	+	0.97
Housing, water, Elec., Gas an	29.4149	191.64	191.56	182.66	+	0.04	+	4.92
51 House Rent	21.8149	182.22	182.22	170.85	+	0.00	+	6.65
52 Construction Input Items	0.5623	248.60	247.86	241.85	+	0.30	+	2.79
53 Construction Wage Rates	0.3331	232.60	230.48	223.39	+	0.92	+	4.12
54 Water Supply	0.4971	164.74	163.38	149.92	+	0.83	+	9.89
55 Electricity	4.3985	238.10	238.10	238.10	+	0.00	+	0.00
56 Gas	1.5756	158.08	158.08	158.08	+	0.00	+	0.00
57 Kerosene Oil	0.0057	195.93	195.65	211.04	+	0.14	-	7.16

Annexure A: Consumer Price Index Numbers by Commodity Groups & Commodities (2007-08=100)

Item and Specification	Weight	Index Numbers			% Change in Nov 2016 over	
		Nov 16	Oct 16	Nov 15	Oct 2016	Nov 2015
58 Firewood Whole	0.2277	286.97	284.35	279.21	+ 0.92	+ 2.78
<i>Furnishing and household equi</i>	4.2082	223.21	222.66	215.78	+ 0.25	+ 3.44
59 Furniture	0.3315	214.48	212.40	207.09	+ 0.98	+ 3.57
60 Household Textiles	0.6489	224.66	223.69	214.08	+ 0.43	+ 4.94
61 Household Equipment	0.5936	179.18	179.23	175.89	- 0.03	+ 1.87
62 Utensils	0.3212	225.32	224.01	218.40	+ 0.58	+ 3.17
63 Plastic Products	0.2547	207.64	207.19	204.88	+ 0.22	+ 1.35
64 Washing Soaps & Detergents	0.7893	229.75	229.21	225.85	+ 0.24	+ 1.73
65 Sewing Needle & Dr Cell	0.1496	201.34	201.34	201.89	+ 0.00	- 0.27
66 Household Servant	1.0432	249.98	249.98	237.20	+ 0.00	+ 5.39
67 Marriage Hall Charges	0.0762	243.87	243.15	234.20	+ 0.30	+ 4.13
<i>Health</i>	2.1868	195.28	193.78	180.59	+ 0.77	+ 8.13
68 Drugs & Medicines	1.2667	161.86	160.65	149.14	+ 0.75	+ 8.53
69 Medical Equipments	0.0080	246.00	245.33	226.66	+ 0.27	+ 8.53
70 Doctor (MBBS) Clinic Fee	0.5904	269.50	266.89	247.40	+ 0.98	+ 8.93
71 Medical Tests	0.3217	189.39	188.77	180.65	+ 0.33	+ 4.84
<i>Transport</i>	7.2023	170.65	170.40	177.09	+ 0.15	- 3.64
72 Motor Vehicles	0.6630	171.44	170.94	163.03	+ 0.29	+ 5.16
73 Motor Vehicle Accessories	0.2439	213.96	213.17	227.45	+ 0.37	- 5.93
74 Motor Fuel	3.0269	136.75	136.36	150.43	+ 0.29	- 9.09
75 Mechanical Service	0.4552	227.84	227.63	219.41	+ 0.09	+ 3.84
76 Motor Vehicle Tax	0.1099	210.18	210.18	210.18	+ 0.00	+ 0.00
77 Transport Services	2.7034	193.28	193.28	197.38	+ 0.00	- 2.08
<i>Communication</i>	3.2198	131.52	131.26	130.39	+ 0.20	+ 0.87
78 Postal Services	0.0662	244.70	243.32	229.93	+ 0.57	+ 6.42
79 Communication & Apparatus	3.1536	129.15	128.91	128.31	+ 0.19	+ 0.65
<i>Recreation and culture</i>	2.0227	196.40	196.21	193.66	+ 0.10	+ 1.41
80 Recreation & Culture	0.8634	129.92	129.89	128.29	+ 0.02	+ 1.27
81 Text Books	0.5706	292.41	292.41	290.62	+ 0.00	+ 0.62
82 Newspapers	0.1934	175.49	175.49	175.42	+ 0.00	+ 0.04
83 Stationery	0.3953	213.25	212.35	205.39	+ 0.42	+ 3.83
<i>Education</i>	3.9431	233.40	232.15	209.25	+ 0.54	+ 11.54
84 Education	3.9431	233.40	232.15	209.25	+ 0.54	+ 11.54
<i>Restaurants and hotels</i>	1.2286	267.68	266.35	254.36	+ 0.50	+ 5.24
85 Readymade Food	1.2286	267.68	266.35	254.36	+ 0.50	+ 5.24
<i>Misc. goods and services</i>	2.7550	238.33	237.26	225.02	+ 0.45	+ 5.92
86 Personal Care	1.4935	218.97	218.58	209.48	+ 0.18	+ 4.53
87 Cosmetics	0.3853	201.04	200.19	193.11	+ 0.42	+ 4.11
88 Blades	0.0322	195.66	195.43	190.75	+ 0.12	+ 2.57
89 Personal Equipments	0.8440	291.24	288.83	268.39	+ 0.83	+ 8.51

Annexure B: Wholesale Price Indices by Major Groups & Commodities

(2007-08=100)

Item and Specification	Weight	Index Numbers			% Change in Nov 2016 over		
		Nov 16	Oct 16	Nov 15	Oct 2016	Nov 2015	
General	100.0000	214.07	214.53	208.72	-	0.21	+ 2.56
Agriculture Forestry & Fisher	25.7674	242.47	247.04	226.06	-	1.85	+ 7.26
001 Wheat	0.6297	211.20	209.05	215.84	+	1.03	- 2.15
002 Maize	0.6764	191.32	190.54	185.64	+	0.41	+ 3.06
003 Rice	2.4413	148.65	147.78	143.04	+	0.59	+ 3.92
004 Sorghum / Jowar	0.0214	242.91	258.01	271.60	-	5.85	- 10.56
005 Millet / Bajra	0.0374	171.85	182.73	188.77	-	5.95	- 8.96
006 Vegetables	1.2441	295.08	348.51	320.31	-	15.33	- 7.88
007 Fresh Fruits	1.5144	202.51	248.10	206.96	-	18.38	- 2.15
008 Dry Fruits	0.2478	244.77	244.62	243.32	+	0.06	+ 0.60
009 Cotton Seeds	1.1511	260.78	255.71	251.49	+	1.98	+ 3.69
010 Other Oil Seeds	0.0722	177.55	174.88	164.88	+	1.53	+ 7.68
011 Edible Roots / Potatoes	0.2540	281.67	250.44	204.98	+	12.47	+ 37.41
012 Stimulant & Spice Crops	0.1634	216.85	235.64	269.27	-	7.97	- 19.47
013 Pulses	0.4901	312.67	309.70	245.62	+	0.96	+ 27.30
014 Sugar Crops	1.0725	266.42	293.89	286.29	-	9.35	- 6.94
015 Fibre Crops	5.3169	197.33	195.52	173.76	+	0.93	+ 13.56
016 Unmanufactured Tobacco	0.0742	265.84	260.21	229.69	+	2.16	+ 15.74
017 Poultry	0.5633	178.62	190.04	181.52	-	6.01	- 1.60
018 Raw Milk from Bovine Animals	7.0279	267.02	265.22	254.04	+	0.68	+ 5.11
019 Eggs	0.5034	251.78	196.73	205.67	+	27.98	+ 22.42
020 Raw Animal Materials / Wool	0.0351	173.89	173.89	179.16	+	0.00	- 2.94
021 Hides & Fur Skins, Raw	0.4834	122.98	122.45	153.62	+	0.43	- 19.95
022 Fuel Wood in Logs	0.0179	269.14	264.77	263.57	+	1.65	+ 2.11
023 Fish Live Fresh or Chilled	1.7295	447.65	455.08	339.32	-	1.63	+ 31.93
Ores/Minerals, Elec., Gas & W	12.0389	242.44	242.01	246.98	+	0.18	- 1.84
024 Coal not Agglomerated	0.7508	155.29	152.94	192.16	+	1.54	- 19.19
025 Natural Gas Liquified	5.7385	210.34	209.52	209.99	+	0.39	+ 0.17
026 Salt & Pure Sodium Chloride	0.0584	231.97	254.33	252.31	-	8.79	- 8.06
027 Electrical Energy	5.4912	288.00	288.00	293.09	+	0.00	- 1.74
Food, Beverages, Tobacco, Textil	31.1122	225.93	224.34	212.98	+	0.71	+ 6.08
Food Products, Beverages &	20.0718	239.18	237.74	224.90	+	0.61	+ 6.35
028 Meat of Animals	3.4559	279.82	279.82	266.98	+	0.00	+ 4.81
029 Vegetables & Fruit Juice	0.0058	211.47	209.83	201.03	+	0.78	+ 5.19
030 Dried Fruits & Nuts	0.1733	250.67	240.98	232.47	+	4.02	+ 7.83
031 Fruit Juices	0.3880	184.03	183.53	177.53	+	0.27	+ 3.66
032 Vegetable Oils Refined	1.9242	151.24	151.00	149.09	+	0.16	+ 1.44
033 Vegetable Ghee	1.5632	123.44	123.35	118.02	+	0.07	+ 4.59
034 Oil Cakes	0.9611	227.22	226.38	212.90	+	0.37	+ 6.73
035 Processed Liquid Milk	4.4437	257.57	257.57	247.18	+	0.00	+ 4.20
036 Milk & Cream in Solid Form	0.0316	220.54	220.59	216.50	-	0.02	+ 1.87
037 Ice Cream	0.0047	238.04	238.04	219.91	+	0.00	+ 8.24
038 Dairy Products N.E.C	0.0117	252.52	249.21	244.60	+	1.33	+ 3.24
039 Wheat Flour	2.3034	196.86	194.90	202.06	+	1.01	- 2.57
040 Other Cereal Flour	0.0604	327.54	307.94	224.57	+	6.36	+ 45.85
041 Sugar Refined	1.7975	272.80	262.43	224.95	+	3.95	+ 21.27
042 Chocolate	0.0139	99.45	99.45	101.06	+	0.00	- 1.59
043 Sugar Confectionary	0.0738	128.15	128.15	118.83	+	0.00	+ 7.84
044 Coffee & Tea	0.7303	232.40	230.56	259.94	+	0.80	- 10.59
045 Spices	0.1449	190.38	190.17	188.29	+	0.11	+ 1.11
046 Other Food Products	0.0336	293.85	293.85	292.02	+	0.00	+ 0.63
047 Mineral Water	0.0207	197.57	197.57	188.35	+	0.00	+ 4.90
048 Beverages	0.6303	172.33	172.33	171.95	+	0.00	+ 0.22
049 Tobacco Products	1.2998	435.03	435.03	356.45	+	0.00	+ 22.05
Textiles & Apparels	10.3289	201.76	200.01	190.89	+	0.87	+ 5.69
050 Cotton Yarn	5.2491	191.63	191.17	178.19	+	0.24	+ 7.54
051 Nylon Yarn	0.1719	143.99	143.99	147.08	+	0.00	- 2.10
052 Blended Yarn	0.1689	179.94	179.64	183.29	+	0.17	- 1.83
053 Woven Fabrics	0.0128	286.46	286.46	265.37	+	0.00	+ 7.95
054 Cotton Fabrics	0.6343	209.09	209.09	201.65	+	0.00	+ 3.69
055 Other Fabrics	1.1016	224.94	224.29	217.81	+	0.29	+ 3.27
056 Silk & Reyon Fabrics	0.7350	191.76	190.96	186.80	+	0.42	+ 2.66
057 Towels	0.1235	271.17	267.20	267.20	+	1.49	+ 1.49
058 Blankets	0.0029	247.52	247.38	243.93	+	0.06	+ 1.47

Annexure B: Wholesale Price Indices by Major Groups & Commodities

(2007-08=100)

Item and Specification	Weight	Index Numbers			% Change in Nov 2016 over		
		Nov 16	Oct 16	Nov 15	Oct 2016	Nov 2015	
059 Bed Sheets	0.0913	257.96	257.96	256.29	+	0.00	+ 0.65
060 Quilts	0.0019	203.79	199.16	196.84	+	2.32	+ 3.53
061 Woolen Carpets	0.0383	196.43	196.43	142.86	+	0.00	+ 37.50
062 Synthetic Carpets	0.0566	129.25	129.25	129.25	+	0.00	+ 0.00
063 Hosiery Products	0.8832	241.05	225.43	222.88	+	6.93	+ 8.15
064 Readymade Garments	1.0576	200.44	200.44	193.27	+	0.00	+ 3.71
Leather Products	0.7115	202.86	199.75	197.58	+	1.56	+ 2.67
065 Leather Without Hair	0.2973	229.40	221.97	221.97	+	3.35	+ 3.35
066 Other Leather N.E.C	0.2567	207.31	207.31	206.27	+	0.00	+ 0.50
067 Footwears	0.1575	145.51	145.51	137.38	+	0.00	+ 5.92
Other Transportable Goods	22.3659	165.19	165.08	176.87	+	0.07	- 6.60
068 Timber	0.0165	224.68	224.68	214.43	+	0.00	+ 4.78
069 Printing Paper	0.4279	164.90	164.90	164.56	+	0.00	+ 0.21
070 Hard Board	0.1579	197.92	197.92	197.92	+	0.00	+ 0.00
071 Coke	0.2797	163.45	163.45	163.45	+	0.00	+ 0.00
072 Motor Spirit	1.5336	108.54	108.54	128.80	+	0.00	- 15.73
073 Diesel Oil	5.2664	144.34	144.34	172.03	+	0.00	- 16.10
074 Kerosine Oil	0.2151	115.11	115.11	152.12	+	0.00	- 24.33
075 Furnace Oil	3.2664	92.32	85.40	75.72	+	8.10	+ 21.92
076 Mobil Oil	0.7114	195.35	195.35	199.78	+	0.00	- 2.22
077 Chemicals	1.7720	175.41	177.41	185.92	-	1.13	- 5.65
078 Dyeing Material	0.1539	146.55	146.55	146.55	+	0.00	+ 0.00
079 Fertilizers	2.8657	216.35	221.56	273.25	-	2.35	- 20.82
080 Pesticides	0.2763	308.75	308.79	312.37	-	0.01	- 1.16
081 Insecticides	0.1276	135.98	135.58	134.66	+	0.30	+ 0.98
082 Paints & Varnishes	0.1916	295.36	295.36	295.36	+	0.00	+ 0.00
083 Medicines	1.1428	168.53	168.17	146.67	+	0.21	+ 14.90
084 Soaps & Detergents	0.8168	187.81	187.54	181.33	+	0.14	+ 3.57
085 Auto Tyres	0.2703	177.38	181.83	192.83	-	2.45	- 8.01
086 Plastic Products	0.4550	225.73	228.35	231.05	-	1.15	- 2.30
087 Glass sheets	0.2089	283.21	282.43	231.30	+	0.28	+ 22.44
088 Other Glass Articles	0.1635	299.07	299.07	243.63	+	0.00	+ 22.76
089 Ceramics & Sanitary Fixture	0.0244	234.18	233.48	227.13	+	0.30	+ 3.10
090 Bricks, Blocks & Tiles	0.1566	219.15	218.83	217.09	+	0.15	+ 0.95
091 Cement	1.8145	212.63	212.72	206.79	-	0.04	+ 2.82
092 Bed Foam	0.0006	164.33	160.50	156.67	+	2.39	+ 4.89
093 Matches	0.0505	162.62	162.62	162.62	+	0.00	+ 0.00
Metal Product, Machinery & Eq	8.7156	174.10	172.38	171.09	+	1.00	+ 1.76
094 Pig Iron	0.0593	128.97	128.97	128.97	+	0.00	+ 0.00
095 Steel Bar & Sheets	1.4022	126.37	120.20	127.63	+	5.13	- 0.99
096 Pipe Fittings	0.0780	193.63	193.63	195.10	+	0.00	- 0.75
097 Steel Products	0.3879	177.38	177.06	173.54	+	0.18	+ 2.21
098 Engines & Motors	0.0046	128.30	109.24	109.07	+	17.45	+ 17.63
099 Vacuum Pumps	0.0155	133.32	114.95	115.39	+	15.98	+ 15.54
100 Air Conditioners	0.0049	201.18	201.18	200.18	+	0.00	+ 0.50
101 Cultivators	0.0551	190.66	190.66	219.76	+	0.00	- 13.24
102 Chuff Cutter	0.1293	153.46	149.20	149.20	+	2.86	+ 2.86
103 Tractors	0.0028	201.75	201.75	205.43	+	0.00	- 1.79
104 Lathe Machines	0.0525	241.06	241.06	208.81	+	0.00	+ 15.44
105 Concrete Mixture	0.0107	138.83	138.83	138.83	+	0.00	+ 0.00
106 Fridge, WashM, SewM, Fans, Iron	1.1645	204.01	204.00	200.43	+	0.00	+ 1.79
107 Electric Wires	0.0912	200.83	195.19	195.19	+	2.89	+ 2.89
108 Lighting Equipments	1.4431	172.50	171.92	167.30	+	0.34	+ 3.11
109 Radio & Television	0.1843	140.42	140.42	126.49	+	0.00	+ 11.01
110 Motor Vehicles	0.0244	191.39	191.39	183.03	+	0.00	+ 4.57
111 Motorcycles	0.2570	125.89	125.89	125.89	+	0.00	+ 0.00
112 Bicycles	3.3483	188.81	187.65	185.63	+	0.62	+ 1.71